



4 July 2014

Edition 13

Australian Notices to Mariners are the authority for correcting Australian Charts and Publications

AUSTRALIAN NOTICES TO MARINERS

Notices 610 - 669

List of Temporary and Preliminary Notices in force

Published fortnightly by the Australian Hydrographic Service



Commodore B.K. BRACE RAN
Hydrographer of Australia

SECTIONS.

- I. Australian Notices to Mariners, including blocks and notes.
- II. Hydrographic Reports.
- III. Navigational Warnings.

SUPPLEMENTS.

- I. Tracings
- II. Cumulative List of Australian Notices to Mariners.
- III. Cumulative List of Temporary and Preliminary Australian Notices to Mariners.
- IV. Temporary and Preliminary Notices in force.
- V. Amendments to Admiralty List of Lights and Fog Signals (Vol K), Radio Signals (NP 281(2), 282, 283(2), 285, 286(4)) and Sailing Directions (NP 9, 13, 14, 15, 33, 34, 35, 36, 39, 44, 51, 60, 61, 62, 100, 136).

© Commonwealth of Australia 2014

This work is copyright. Apart from any use permitted under the Copyright Act 1968, no part may be reproduced by any process, adapted, communicated or commercially exploited without prior written permission from The Commonwealth represented by the Australian Hydrographic Service.

IMPORTANT NOTICE

This edition of Notices to Mariners includes all significant information affecting AHS products which the AHS has become aware of since the last edition. All reasonable efforts have been made to ensure the accuracy and completeness of the information, including third party information, on which these updates are based. The AHS regards third parties from which it receives information as reliable, however the AHS cannot verify all such information and errors may therefore exist. The AHS does not accept liability for errors in third party information.

GENERAL INSTRUCTIONS

The substance of these notices should be inserted on the charts affected.

Bearings are referred to the true compass and are reckoned clockwise from North; those relating to lights are given as seen by an observer from seaward. Positions quoted in permanent notices relate to the horizontal datum for the chart(s). When preliminary or temporary notices affect multiple charts, positions will be provided in relation to only one horizontal datum and that datum will be specified. When the multiple charts do not have a common horizontal datum, mariners will be required to adjust the position(s) for those charts not on the specified datum. The range quoted for a light is its nominal range. Depths are with reference to the chart datum of each chart. Heights are above mean high water springs or mean higher high water, as appropriate.

The capital letter (P) or (T) after the number of any notice denotes a preliminary or temporary notice respectively, which are contained separately at the end of the permanent notices. A star (*) adjacent to the number of a notice indicates that the notice is based on original information.

REPORTING OF DANGERS

Mariners are particularly requested to notify the AUSTRALIAN HYDROGRAPHIC SERVICE, Locked Bag 8801 Wollongong, NSW 2500 (Fax 02-4223 6599, e-mail Hydro.NTM@defence.gov.au or, alternatively by filling in and submitting the [Hydrographic Notes](#) forms located on the web site – www.hydro.gov.au), immediately on the discovery of new dangers or suspected dangers to navigation. For changes or defects in aids to navigation notify AusSAR (Fax 02-6230 6868 or email rccaus@amsa.gov.au).

AUTHORISED USE

Copies of Australian notices are available free of charge from the Australian Hydrographic Service (AHS) website (www.hydro.gov.au) and through the eNotices (email) service (www.hydro.gov.au/enotices/enotices.htm).

Individual Notices may be copied for the purpose of inserting Notice substance on official charts and publications. Paper copies may be printed by chart agents and distributed to customers on a cost recovery basis. Participating chart agents are listed on the AHS website as providing a 'Paper Notices to Mariners' service (www.hydro.gov.au/prodserv/distributors/distributors.htm). Copies of the notices may not be sold for profit without prior written agreement.

NUMERICAL INDEX OF NOTICES TO MARINERS

Edition No 13

Notices	Aus Chart, INT Chart, ENC Cell, AHP, BA Pubs
610	Aus 144, 155, 249, 251, 252, 255, 256, 260, 821, 822, 823, 824, 825, 826, 827, 828
611	Amendment to Australian Notice to Mariners No 9
612	Amendment to Australian Notice to Mariners No 19
613	Aus 811, 4643, INT 643
614	Aus 262, 830, AX 00262T
615	Aus 235, 815
616	Aus 244, 245
617	Aus 230
618	Aus 831
619	Aus 386, 523, 653
620	Aus 386, 387, 673
621	Aus 637
622	Aus 379, 4620, INT 620, AX 04620U
623	Aus 68, 327, 742, 743
624	Aus 81
625	Aus 755, AX 00755S, AXA 0754S
626	Aus 43
627	Aus 778
628	Aus 157
629	Aus 150, 151
630(T)	Aus 207, 208, 809, AX 00809S
631(T)	Aus 253, 268
632(T)	Aus 252, 253, 268
633(T)	Aus 238
634(T)	Aus 242, 243
635(T)	Aus 270
636(T)	Aus 249, 823, AX 00249S, 00823S
637(T)	Aus 252, 824, 825
638(T)	Aus 235, 236, 237, 238, 814, 815
639(T)	Aus 257
640(T)	Aus 4
641(T)	Aus 23
642(T)	Aus 26, 27, 28, AX 00026T
643(T)	Aus 24, 26, AX 72026
644(T)	Aus 26, 28, AX 72026
645(T)	Aus 310, AX 00310U
646(T)	Aus 310, 4721, INT 721, AX 00310U, 04721U
647(T)	Aus 312, 314, 4721, 4722, INT 721, 722, AX 00312U, 00314U, 04721U, 04722U
648(T)	Aus 314, 4721, 4722, INT 721, 722, AX 00314U, 04721U, 04722U
649(T)	Aus 328
650(T)	Aus 327, 328
651(T)	Aus 327, 328, 742
652(T)	Aus 59
653(T)	Aus 328, 329, 744
654(T)	Aus 54
655(T)	Aus 57, 741, 742
656(T)	Aus 4708, 4723, INT 708, 723, AX 04708U, 04723U
657(T)	Aus 485, 780
658(T)	Aus 143, 155, 157
659(T)	Aus 154
660(T)	Aus 154
661(T)	Aus 143
662(T)	Aus 143
663(T)	Aus 154
664(T)	Aus 143, 154, 155
665(T)	Aus 155
666(T)	Aus 150, 487, 801
667(T)	Aus 150, 151, 152
668(T)	Aus 150, 151, 152
669(T)	TEMPORARY AND PRELIMINARY NOTICES

NUMERICAL INDEX OF CHARTS AFFECTED

Edition No 13

Aus Chart	Notices
Aus 4	640(T)
Aus 23	641(T)
Aus 24	643(T)
Aus 26	642(T), 643(T), 644(T)
Aus 27	642(T)
Aus 28	642(T), 644(T)
Aus 43	626
Aus 54	654(T)
Aus 57	655(T)
Aus 59	652(T)
Aus 68	623
Aus 81	624
Aus 143	658(T), 661(T), 662(T), 664(T)
Aus 144	610
Aus 150	629, 666(T), 667(T), 668(T)
Aus 151	629, 667(T), 668(T)
Aus 152	667(T), 668(T)
Aus 154	659(T), 660(T), 663(T), 664(T)
Aus 155	610, 658(T), 664(T), 665(T)
Aus 157	628, 658(T)
Aus 207	630(T)
Aus 208	630(T)
Aus 230	617
Aus 235	615, 638(T)
Aus 236	638(T)
Aus 237	638(T)
Aus 238	633(T), 638(T)
Aus 242	634(T)
Aus 243	634(T)
Aus 244	616
Aus 245	616
Aus 249	610, 636(T)
Aus 251	610
Aus 252	610, 632(T), 637(T)
Aus 253	631(T), 632(T)
Aus 255	610
Aus 256	610
Aus 257	639(T)
Aus 260	610
Aus 262	614
Aus 268	631(T), 632(T)
Aus 270	635(T)
Aus 310	645(T), 646(T)
Aus 312	647(T)
Aus 314	647(T), 648(T)
Aus 327	623, 650(T), 651(T)
Aus 328	649(T), 650(T), 651(T), 653(T)
Aus 329	653(T)
Aus 379	622
Aus 386	619, 620
Aus 387	620
Aus 485	657(T)
Aus 487	666(T)
Aus 523	619

Aus Chart	Notices
Aus 637	621
Aus 653	619
Aus 673	620
Aus 741	655(T)
Aus 742	623, 651(T), 655(T)
Aus 743	623
Aus 744	653(T)
Aus 755	625
Aus 778	627
Aus 780	657(T)
Aus 801	666(T)
Aus 809	630(T)
Aus 811	613
Aus 814	638(T)
Aus 815	615, 638(T)
Aus 821	610
Aus 822	610
Aus 823	610, 636(T)
Aus 824	610, 637(T)
Aus 825	610, 637(T)
Aus 826	610
Aus 827	610
Aus 828	610
Aus 830	614
Aus 831	618
Aus 4620	622
Aus 4643	613
Aus 4708	656(T)
Aus 4721	646(T), 647(T), 648(T)
Aus 4722	647(T), 648(T)
Aus 4723	656(T)
AX 00026T	642(T)
AX 00249S	636(T)
AX 00262T	614
AX 00310U	645(T), 646(T)
AX 00312U	647(T)
AX 00314U	647(T), 648(T)
AX 00755S	625
AX 00809S	630(T)
AX 00823S	636(T)
AX 04620U	622
AX 04708U	656(T)
AX 04721U	646(T), 647(T), 648(T)
AX 04722U	647(T), 648(T)
AX 04723U	656(T)
AX 72026	643(T), 644(T)
AXA 0754S	625

INT Chart	Notices
INT 620	622
INT 643	613

INT Chart	Notices
INT 708	656(T)
INT 721	646(T) , 647(T) , 648(T)
INT 722	647(T) , 648(T)
INT 723	656(T)

610 AUSTRALIA - Product

Australian Hydrographic Service (AA750403, AA752501)

New Edition

Aus 252	4/7/2014	Australia - East Coast - Queensland - Whitsunday Group 20° 00'·63 S – 20° 48'·52 S 148° 01'·07 E – 148° 39'·40 E Plan: Laguna Quays 20° 35'·80 S – 20° 36'·40 S 148° 40'·70 E – 148° 41'·63 E <i>New edition with general updating throughout; including new two way route.</i>	1:75 000 1:12 500	Aus 5000	\$35.00
Aus 255	4/7/2014	Australia - East Coast - Queensland - Approaches to Abbot Point 19° 43'·40 S – 19° 57'·40 S 148° 01'·07 E – 148° 10'·42 E Plan: Abbot Point Wharf 19° 50'·65 S – 19° 51'·72 S 148° 03'·82 E – 148° 05'·90 E <i>New edition with general updating throughout; including new two way route.</i>	1:25 000 1:12 500	Aus 5000	\$35.00
Aus 256	4/7/2014	Australia - East Coast - Queensland - Cleveland Bay and Approaches 19° 00'·80 S – 19° 18'·50 S 146° 33'·35 E – 147° 05'·20 E Plan: Cape Ferguson 19° 16'·33 S – 19° 16'·90 S 147° 03'·00 E – 147° 03'·90 E Nelly Bay 19° 09'·43 S – 19° 09'·93 S 146° 50'·93 E – 146° 51'·67 E <i>New edition with general updating throughout; including new two way route.</i>	1:50 000 1:10 000 1:7 500	Aus 5000	\$35.00
Aus 825	4/7/2014	Australia - East Coast - Queensland - Whitsunday Island to Bowen 19° 21'·0 S – 20° 17'·2 S 148° 12'·0 E – 149° 45'·9 E <i>New edition with general updating throughout; including new two way route.</i>	1:150 000	Aus 5000	\$35.00
Aus 826	4/7/2014	Australia - East Coast - Queensland - Bowen to Cape Bowling Green 18° 35'·93 S – 20° 05'·07 S 147° 23'·25 E – 148° 22'·62 E <i>New edition with general updating throughout; including new two way route.</i>	1:150 000	Aus 5000	\$35.00
Aus 827	4/7/2014	Australia - East Coast - Queensland - Cape Bowling Green to Palm Isles 18° 34'·17 S – 19° 30'·63 S 146° 15'·10 E – 147° 49'·00 E <i>New edition with general updating throughout; including new two way route.</i>	1:150 000	Aus 5000	\$35.00
Aus 828	4/7/2014	Australia - East Coast - Queensland - Palm Isles to Brook Islands and Palm Passage 17° 53'·4 S – 18° 50'·2 S 145° 58'·6 E – 147° 32'·6 E <i>New edition with general updating throughout; including new two way route.</i>	1:150 000	Aus 5000	\$35.00

New edition to be published shortly

Chart	Title	Scale	Expected Publication Date
Aus 249	Australia - East Coast - Queensland - Approaches to Hay Point and Mackay	1:75 000	18 July 2014
Aus 251	Australia - East Coast - Queensland - Bailey Islet to Repulse Islands	1:75 000	18 July 2014
Aus 260	Australia - East Coast - Queensland - Broad Sound Channel and Shoalwater Bay	1:75 000	18 July 2014

610 AUSTRALIA - Product

Aus 821	Australia - East Coast - Queensland - Hydrographers Passage	1:150 000	18 July 2014
Aus 822	Australia - East Coast - Queensland - Port Clinton to Percy Isles	1:150 000	18 July 2014
Aus 823	Australia - East Coast - Queensland - Percy Isles to Mackay	1:150 000	18 July 2014
Aus 824	Australia - East Coast - Queensland - Penrith Island to Whitsunday Island	1:150 000	18 July 2014

Chart permanently withdrawn

<i>Chart</i>	<i>On publication of new edition</i>	<i>Remarks</i>
Aus 144	Aus 144	Ed 12 refers
Aus 155	Aus 155	Ed 12 refers
Aus 252	Aus 252	
Aus 255	Aus 255	
Aus 256	Aus 256	
Aus 825	Aus 825	
Aus 826	Aus 826	
Aus 827	Aus 827	
Aus 828	Aus 828	
AusRNC service		Permanently withdrawn without replacement.

For further details refer to the AHS website at www.hydro.gov.au for new edition and new chart stock arrival information.

When placing orders with a chart agent, mariners should advise whether their order pertains to the current edition or the new edition.

611 AUSTRALIA - Product - Amendment to Australian Notice to Mariners No 9

Department of Defence (AA747826)

Page 39

YMMM/R495A Tasman Sea

Amend longitude 151° 30' 18" E to 151° 30' 23" E

YMMM/R495B Tasman Sea

Amend longitude 151° 30' 18" E to 151° 30' 23" E

612 AUSTRALIA - Product - Amendment to Australian Notice to Mariners No 19

Department of Defence (AA748792, AA748793)

Substitute accompanying pages for notice number 19.

613* AUSTRALIA - NEW SOUTH WALES - Lagers Point - Wreck northeastwards

Australian Hydrographic Service (AA745406)

Aus 811 [106/2014]

Insert depth, 72m, enclosed by danger circle with legend, *Wk* 30° 51'.62 S 153° 08'.54 E

Delete depth, 81m 30° 51'.4 S 153° 08'.5 E

Aus 4643 (INT 643) [210/2014]

Insert depth, 72m, enclosed by danger circle with legend, *Wk* 30° 51'.6 S 153° 08'.5 E

614* AUSTRALIA - QUEENSLAND - Cairns - Depths

Far North Queensland Ports Corporation Limited (DHDB 2639222)

Aus 262 [948/2013]

Insert accompanying block 16° 47'.3 S 145° 48'.8 E

Aus 830 [208/2014]

Insert accompanying block 16° 46'.0 S 145° 47'.0 E

AX 00262T [NE 1/11/2013]

Insert accompanying block 16° 47'.3 S 145° 48'.8 E

615* AUSTRALIA - QUEENSLAND - Caloundra - Light buoy southeastwards

Maritime Safety Queensland Notice 334(T)/2014 (AA749466)

Aus 235 [480/2014]

Move	light buoy	26° 54'.0 S	153° 16'.9 E
	to	26° 53'.91 S	153° 16'.73 E

Aus 815 [479/2014]

Move	light buoy	26° 54'.0 S	153° 16'.9 E
	to	26° 53'.91 S	153° 16'.73 E

616* AUSTRALIA - QUEENSLAND - Gladstone - Targinie Channel - Nav aids

Maritime Safety Queensland Notice 335(T)/2014 (AA749468)

Aus 244 (plan, Fishermans Landing Wharves) [109/2014]

Amend	light to <i>Q.Bu (F Day)</i>	23° 46'.95 S	151° 10'.12 E
-------	------------------------------	--------------	---------------

Aus 245 [359/2014]

Insert	light, <i>Iso.Bu.2s (F Day)</i>	23° 46'.673 S	151° 09'.445 E
--------	---------------------------------	---------------	----------------

Amend	light beacon to <i>Fl(2)Y.6s</i>	23° 46'.61 S	151° 09'.27 E
	light to <i>Q.Bu (F Day)</i>	23° 46'.95 S	151° 10'.12 E

Delete	dashed line, between	23° 46'.61 S	151° 09'.27 E
		23° 46'.67 S	151° 09'.45 E

617* AUSTRALIA - QUEENSLAND - Gold Coast - Compass rose

Maritime Safety Queensland (AA750237)

Aus 230 [316/2014]

Insert	accompanying block	27° 56'.8 S	153° 26'.8 E
--------	--------------------	-------------	--------------

618* AUSTRALIA - QUEENSLAND - Rocky Island - Beacon*Former Notice - 501(P)/2014 is cancelled*

Australian Maritime Safety Authority Final ATH 13/2014 (AA749287)

Aus 831 [1197/2013]

Delete	beacon	15° 36'.4 S	145° 20'.1 E
--------	--------	-------------	--------------

619* PAPUA NEW GUINEA - Cape Bredow - Light beacon

National Maritime Safety Authority PNG Notice 23/2014 (AA750901)

Aus 386 [192/2011]

Amend	light range to <i>4M</i>	6° 32'.8 S	147° 50'.9 E
-------	--------------------------	------------	--------------

Aus 523 [564/2014]

Amend	light range to <i>4M</i>	6° 32'.8 S	147° 50'.9 E
-------	--------------------------	------------	--------------

Aus 653 (plan, Langemak Bay and Finschhafen) [294/2011]

Amend	light range to <i>4M</i>	6° 32'.78 S	147° 50'.93 E
-------	--------------------------	-------------	---------------

620* PAPUA NEW GUINEA - Massmass Island - Light beacon

National Maritime Safety Authority PNG Notice 23/2014 (AA750901)

Aus 386 [619/2014]

Amend	light range to <i>3M</i>	5° 58'.5 S	148° 07'.1 E
-------	--------------------------	------------	--------------

Aus 387 [484/2014]

Amend	light range to <i>3M</i>	5° 58'.5 S	148° 07'.1 E
-------	--------------------------	------------	--------------

Aus 673 [140/2011]

Amend	light range to <i>3M</i>	5° 58'.5 S	148° 07'.1 E
-------	--------------------------	------------	--------------

621* PAPUA NEW GUINEA - Trobriand Islands - Boli Point - Light beacon
National Maritime Safety Authority PNG Notice 24/2014 (AA750901)

Aus 637 [NC 23/8/2013]
Amend light beacon to *Fl.G.5s* 8° 33'.8 S 151° 01'.1 E

622* PAPUA NEW GUINEA - Yule Island - Light
National Maritime Safety Authority PNG Notice 25/2014 (AA750901)

Aus 379 [39/2014]
Amend light range to *8M* 8° 49'.7 S 146° 32'.1 E

Aus 4620 (INT 620) [561/2014]
Amend light range to *8M* 8° 49'.7 S 146° 32'.1 E

AX 04620U [561/2014]
Amend light range to *8M* 8° 49'.7 S 146° 32'.1 E

623* AUSTRALIA - WESTERN AUSTRALIA - Cape Preston - Marine farm
Department of Fisheries WA (DHDB 2683982)

Aus 68 [1258/2013]
Delete marine farm centred on 20° 51'.0 S 116° 09'.5 E

Aus 68 (plan, Cape Preston) [1258/2013]
Delete marine farm centred on 20° 49'.99 S 116° 11'.05 E

Aus 327 [569/2014]
Delete marine farm centred on 20° 51'.0 S 116° 09'.5 E

Aus 742 [1258/2013]
Delete marine farm centred on 20° 51'.0 S 116° 09'.5 E

Aus 743 [121/2014]
Delete marine farm centred on 20° 51'.0 S 116° 09'.5 E

624* AUSTRALIA - WESTERN AUSTRALIA - Geraldton - Marine farm
Department of Fisheries WA (DHDB 2683982)

Aus 81 [NE 9/5/2014]
Delete marine farm centred on 28° 47'.7 S 114° 35'.2 E

625* AUSTRALIA - WESTERN AUSTRALIA - Murray Reefs - James Service Reef - Scientific instrument westwards
Department of Transport WA (AA750048)

Aus 755 [567/2014]
Insert orange spherical light buoy, *Fl(5)Y.20s*, without topmark 32° 27'.11 S 115° 34'.25 E

AX 00755S [567/2014]
Insert orange spherical light buoy, *Fl(5)Y.20s*, without topmark 32° 27'.11 S 115° 34'.25 E

AXA 0754S [567/2014]
Insert orange spherical light buoy, *Fl(5)Y.20s*, without topmark 32° 27'.11 S 115° 34'.25 E

626* AUSTRALIA - WESTERN AUSTRALIA - Scott Reef - Tidal panel
Australian Hydrographic Service (AA748778)

Aus 43 [1244/2011]
Amend Lat S to *14° 03'* 13° 40'.6 S 121° 41'.5 E
Long E to *121° 48'* 13° 40'.6 S 121° 42'.0 E

627* AUSTRALIA - SOUTH AUSTRALIA - Spencer Gulf - Western Shoal - Light beacon

Australian Maritime Safety Authority Final ATH 22/2014 (AA746604)

Aus 778 [571/2014]

Delete light beacon

33° 11'.2 S

137° 32'.0 E

628* AUSTRALIA - VICTORIA - Port Phillip - Anchorages

Victorian Notice 19/2014 (AA717682)

Aus 157 [809/2013]

Insert accompanying block

38° 02'.0 S

144° 48'.0 E

629* AUSTRALIA - VICTORIA - Western Port - North Arm - Scientific instrument

Victorian Notice 113/2014 (AA750933), Patrick Stevedores Holdings Pty Ltd (AA750453)

Aus 150 [573/2014]Insert depth, 13_gm, enclosed by danger circle with legend, ODAS

38° 17'.13 S

145° 14'.51 E

Aus 151 [573/2014]Insert depth, 13_gm, enclosed by danger circle with legend, ODAS

38° 17'.131 S

145° 14'.514 E

630(T)/2014 AUSTRALIA - NEW SOUTH WALES - Newcastle - Depth information*Former Notice - 531(T)/2014 is cancelled*

Newcastle Port Corporation (AA751621)

Available depths as at 26 June 2014:

<i>Berth</i>	<i>Metres</i>	<i>Remarks</i>
Eastern Basin 1	11.4	
Eastern Basin 2 North of Ch 450	11.6	
Eastern Basin 2 South of Ch 450	11.5	
Western Basin 3	11.6	
Western Basin 4	11.6	
Channel Berth	9.7	
Dyke 1	12.8	
Dyke 2	12.8	
Dyke 4	16.2	
Dyke 5	16.0	
* Dyke 6	5.3	
Mayfield 4 Ch 27 to 266	12.7	
BHP Wharf 6 to Ch 1050	7.6	
Kooragang 2	11.6	
Kooragang 2 North Dolphin Ch 182 to 243	11.6	
Kooragang 2 South Dolphin Ch -92 to 00	11.5	
* Kooragang 3 Ch -40 to 00	12.6	
* Kooragang 3 Ch 00 to 220	13.2	
Kooragang 4	16.5	
Kooragang 5	16.5	
* Kooragang 6	16.3	
* Kooragang 7	16.3	
* Kooragang 8	16.2	
Kooragang 9	16.3	
Kooragang 10	15.9	
Throsby 1 Ch 850 to 1030	8.9	
Carrington Wharf		To be sounded as and when required
Foreshore Park Berth	5.9	
Elgo Wharf		To be sounded as and when required
<i>Channels</i>		
Entrance Approach	17.7	
Entrance Channel (18.0m)	17.8	
Entrance Channel (17.4m)	17.4	
Entrance Channel (16.8m)	16.8	
Entrance Channel (16.2m)	16.2	
Entrance Channel to Horseshoe	15.2	
Horseshoe	15.1	
Steelworks Channel to Swinging Basin	15.1	
* Swinging Basin	14.9	
* Hunter River South Arm (Kooragang 6 to buoy 16)	15.0	
Hunter River South Arm (buoy 16 to buoy 20)	14.8	
Basin Cutting	12.6	
Basin Area to Eastern & Western Basin Berths	12.3	
Basin Area to 1 Throsby	9.4	
Stockton Crossing	3.6	
* Indicates new or revised entry.		

Chart temporarily affected - Aus 207 - Aus 208 - Aus 809 - AX 00809S**631(T)/2014 AUSTRALIA - QUEENSLAND - Abel Point - Dredging operations***Date - Until 31 August 2014*

Maritime Safety Queensland Notice 310(T)/2014 (AA752605)

Dredging operations are in progress in the marina (20° 15'.9 S 148° 42'.7 E).

The dredge will display appropriate lights and shapes.

Mariners are advised to navigate with caution in the area.

Chart temporarily affected - Aus 253 - Aus 268

632(T)/2014 AUSTRALIA - QUEENSLAND - Airlie Beach - Silt curtain removed; light buoys withdrawn*Former Notice - 819(T)/2008 is cancelled*

Maritime Safety Queensland Notice 310(T)/2014 (AA752605)

Cancel this notice on receipt.

Chart formerly affected - Aus 252 - Aus 253 - Aus 268**633(T)/2014 AUSTRALIA - QUEENSLAND - Brisbane River - Bulimba Reach - Harbour works***Date - Until 12 August 2014*

Maritime Safety Queensland Notice 354(T)/2014 (AA751729)

Harbour works associated with the construction of marina berths are in progress in position 27° 27'.15 S 153° 03'.18 E.

The barge MV *Barracoda* is on site and will display appropriate lights and shapes.

Mariners are advised to navigate with caution in the area.

Chart temporarily affected - Aus 238**634(T)/2014 AUSTRALIA - QUEENSLAND - Bundaberg - Depth information***Former Notice - 53(T)/2014 is cancelled*

Maritime Safety Queensland Notice 344(T)/2014 (AA750550)

Available depths as at 19 June 2014:

	<i>Metres</i>
* Sea Reach	8.0
Middle Reach	8.5
Inner Reach	8.5
Swing Basin	6.8
Oil Berth	8.4
* BST Berth	8.9
Deep draught departure channel	8.6
* Indicates revised entry.	

Chart temporarily affected - Aus 242 - Aus 243**635(T)/2014 AUSTRALIA - QUEENSLAND - Cooktown - Dredging operations***Date - Until 30 September 2014*

Maritime Safety Queensland Notice 370(T)/2014 (AA752433)

The dredge *CSD Darwin* will be conducting dredging operations in the Endeavour River and entrance (15° 27'.4 S 145° 15'.1 E).

A submerged pipeline, marked by buoys, exists from the dredge to the shore on the south side of the harbour.

Mariners are advised to navigate with caution in the area.

Chart temporarily affected - Aus 270**636(T)/2014 AUSTRALIA - QUEENSLAND - Hay Point - Racon non operational**

Maritime Safety Queensland Notice 263(T)/2014 (AA752438)

The racon at light beacon, *Fl.R.4s* (21° 14'.93 S 149° 24'.77 E), is non operational.**Chart temporarily affected - Aus 249 - Aus 823 - AX 00249S - AX 00823S****637(T)/2014 AUSTRALIA - QUEENSLAND - Hook Island - Light beacon relit***Former Notice - 582(T)/2014 is cancelled*

Maritime Safety Queensland Notice 368/2014 (AA752341)

Cancel this notice on receipt.

Chart formerly affected - Aus 252 - Aus 824 - Aus 825

638(T)/2014 AUSTRALIA - QUEENSLAND - Moreton Bay - Brisbane River - Depth information*Former Notice - 586(T)/2014 is cancelled*

Brisbane Port Corporation (AA752040)

Available depths and under keel clearances (UKC) at 1 July 2014:

<i>Berth</i>	<i>Metres</i>	<i>Remarks</i>
* Fisherman Islands No12	14.0	
Fisherman Islands No11	14.0	
Fisherman Islands No10	14.0	
Fisherman Islands No9	14.0	
* Fisherman Islands No8	14.1	
* Fisherman Islands No7	14.0	
Fisherman Islands No6	13.8	
Fisherman Islands No5	13.6	
* Fisherman Islands No4	14.0	
* Fisherman Islands No3	13.9	
Fisherman Islands No2	14.0	
Fisherman Islands No1	14.0	
Fisherman Islands Grain and Woodchip	13.0	
* Caltex Fisherman Islands	14.3	
* Fisherman Islands Coal	13.5	
Fisherman Islands General Purpose	11.3	
* Luggage Point Pump Out Facility	13.9	
* BP Luggage Point	13.7	
Caltex Products	10.1	
Cement Australia Co Wharf	9.7	
* BP Products	10.6	
Shell	10.9	
Graincorp Liquid Terminal	10.4	
Incitec North	10.1	
Incitec South	9.9	
Pinkenba 1	10.4	
Pinkenba 2	10.4	
Riverside Marina	-	
Sugar Terminal	9.7	
Cairncross Fitting Out Wharf	7.1	
Cairncross Breasting Wharf	4.4	
Brisbane Naval Wharf	4.3	
* Maritime No1	9.0	
* Hamilton No4	10.3	
* Hamilton No1	8.7	
* Brisbane Cruise Ship Terminal	8.7	
	<i>Metres</i>	<i>UKC/Remarks</i>
<i>Moreton Bay:</i>		
North West Channel	15.0	2.3 (280m width)
North West Bypass Channel	9.2	1.6
Spitfire Channel	15.0	1.5 (600m width)
East Knoll Bypass Channel	6.0	1.4
East Channel	15.0	1.5 (300m width from western side)
Main Channel (M8 - M9)	10.0	1.8
Entrance Channel (E5 - EBCN)	14.7	1.5
<i>Brisbane River:</i>		
* Outer Bar Cutting	13.8	1.46
* Inner Bar Cutting	13.8	1.46
Fisherman Islands Swing Basin	13.7	1.3
Fisherman Islands Swing Basin (11.5)	11.4	0.6
River	9.1	0.6 / 0.9 (draft/tide)
Cement Australia Swing Basin	9.1	0.6 / 0.9 (draft/tide)
Pinkenba Swing Basin	9.0	0.6 / 0.9 (draft/tide)
Hamilton Swing Basin	8.7	0.6 / 0.9 (draft/tide)
* Indicates new or revised entry.		

Chart temporarily affected - Aus 235 - Aus 236 - Aus 237 - Aus 238 - Aus 814 - Aus 815

639(T)/2014 AUSTRALIA - QUEENSLAND - Townsville - Lights unlit
 Maritime Safety Queensland Notice 330(T)/2014 (AA752675)

The lights, *Fl. Y. 2-5s*, are unlit in the following positions:

19° 14'.64 S 146° 49'.94 E
 19° 14'.60 S 146° 49'.88 E
 19° 14'.56 S 146° 49'.83 E
 19° 14'.52 S 146° 49'.76 E.

Chart temporarily affected - Aus 257

640(T)/2014 AUSTRALIA - QUEENSLAND - Weipa - Dredging operations

Date - Until 4 August 2014

Maritime Safety Queensland Notice 353(T)/2014 (AA751709)

The dredge *Brisbane* is conducting dredging operations in the South Channel (12° 41'.2 S 141° 45'.0 E) and harbour (12° 40'.5 S 141° 51'.0 E) from 11 July 2014.

Mariners are advised to navigate with caution in the area.

Chart temporarily affected - Aus 4

641(T)/2014 AUSTRALIA - NORTHERN TERRITORY - Apsley Strait - Light buoy off station

Former Notice - 387(T)/2014 is cancelled

Department of Transport NT (AA732851)

The port lateral light buoy, *Fl. R. 5s* (11° 44'.2 S 130° 37'.7 E), is off station.

Chart temporarily affected - Aus 23

642(T)/2014 AUSTRALIA - NORTHERN TERRITORY - Darwin - East Arm - Dredging operations completed

Former Notices - 986(T)/2013, 351(T)/2014 are cancelled

Darwin Port Corporation Notice 89(T)/2014 (AA751649)

Cancel this notice on receipt.

Chart formerly affected - Aus 26 - Aus 27 - Aus 28 - AX 00026T

643(T)/2014 AUSTRALIA - NORTHERN TERRITORY - Darwin - Light buoy removed

Former Notice - 814(T)/2012 is cancelled

Darwin Port Corporation Notice 50/2013 (AA666706)

Note: NTM 447/2013 refers.

Cancel this notice on receipt.

Chart formerly affected - Aus 24 - Aus 26 - AX 72026

644(T)/2014 AUSTRALIA - NORTHERN TERRITORY - Darwin - Bladin Point - Pontoon removed

Former Notice - 1096(T)/2012 is cancelled

Darwin Port Corporation Notice 93(T)/2014 (AA752660)

Cancel this notice on receipt.

Chart formerly affected - Aus 26 - Aus 28 - AX 72026

645(T)/2014 AUSTRALIA - NORTHERN TERRITORY - Evans Shoal - Scientific instruments eastwards
Fugro Survey Pty Ltd (AA751305)

Subsurface scientific instruments exist as follows:

	<i>Position</i>	<i>Remarks</i>
CP1	9° 48'.84 S 130° 18'.24 E	2 special light buoys, <i>Fl(5)Y.20s</i> , exist within a 0.5M radius of CP1
CP2	9° 51'.90 S 129° 38'.64 E	
CP3	10° 07'.56 S 130° 06'.78 E	
J1	9° 56'.34 S 129° 47'.70 E	
J2	9° 50'.10 S 130° 17'.46 E	
J3	10° 05'.64 S 130° 05'.76 E.	

Chart temporarily affected - Aus 310 - AX 00310U

646(T)/2014 AUSTRALIA - NORTHERN TERRITORY - Lynedoch Bank - Drill rig moved

Former Notice - 385(T)/2014 is cancelled

MODU *Nan Hai 6* (AA750652)

Cancel this notice on receipt.

Chart formerly affected - Aus 310 - Aus 4721 (INT 721) - AX 00310U - AX 04721U

647(T)/2014 AUSTRALIA - TIMOR SEA - Sahul Banks - Drill rig moved

Former Notice - 503(T)/2014 is cancelled

Australian Maritime Safety Authority Auscoast Warning 152/2014 (AA750639)

Cancel this notice on receipt.

Chart formerly affected - Aus 312 - Aus 314 - Aus 4721 (INT 721) - Aus 4722 (INT 722) - AX 00312U - AX 00314U - AX 04721U - AX 04722U

648(T)/2014 AUSTRALIA - TIMOR SEA - Sahul Banks - Drill rig

Australian Maritime Safety Authority Auscoast Warning 152/2014 (AA750639), PTTEP Australasia Pty Ltd (AA751097)

Drill rig *Stena Clyde* is conducting drilling operations in position 11° 59'.61 S 124° 40'.31 E.

Chart temporarily affected - Aus 314 - Aus 4721 (INT 721) - Aus 4722 (INT 722) - AX 00314U - AX 04721U - AX 04722U

649(T)/2014 AUSTRALIA - WESTERN AUSTRALIA - Barrow Island - Mooring buoys northwestwards

Former Notice - 506(T)/2014 is cancelled

Viking Seatech (AA751338)

8 yellow mooring buoys, *Fl.3s*, exist within 1NM radius of position 20° 31'.15 S 114° 49'.42 E.

Chart temporarily affected - Aus 328

650(T)/2014 AUSTRALIA - WESTERN AUSTRALIA - Barrow Island - Pipeline

Former Notice - 183(T)/2014 is cancelled

Date - Until 15 November 2014

Apache Energy Ltd (AA752492)

SPV *Audacia* and *Highland Navigator* are conducting pipe laying operations in an area bounded by the following positions:

19° 54'.71 S 115° 23'.06 E
19° 56'.06 S 115° 23'.87 E
20° 02'.51 S 115° 11'.87 E
20° 01'.16 S 115° 11'.06 E.

Mariners are advised to navigate with caution in the area.

Chart temporarily affected - Aus 327 - Aus 328

651(T)/2014 AUSTRALIA - WESTERN AUSTRALIA - Barrow Island - Pipeline infrastructure*Former Notice* - 776(T)/2011 is cancelled

Department of Transport WA Notice 93/2011 (AA546427)

Note: to be incorporated in new edition Aus 742 to be published shortly.

Cancel this notice on receipt.

Chart formerly affected - Aus 327 - Aus 328 - Aus 742**652(T)/2014 AUSTRALIA - WESTERN AUSTRALIA - Dampier - Harbour works completed***Former Notice* - 831(T)/2013 is cancelled

Dampier Port Authority Notice 28/2013 (AA688922)

Note: to be incorporated in new edition Aus 59 to be published shortly.

Cancel this notice on receipt.

Chart formerly affected - Aus 59**653(T)/2014 AUSTRALIA - WESTERN AUSTRALIA - North West Cape - Wells and pipelines northwards***Former Notice* - 1118(T)/2013 is cancelled

SapuraClough Offshore (AA703831)

Note: to be incorporated in new edition Aus 744 to be published shortly.

Cancel this notice on receipt.

Chart formerly affected - Aus 328 - Aus 329 - Aus 744**654(T)/2014 AUSTRALIA - WESTERN AUSTRALIA - Port Hedland - Hunt Point - Drilling operations***Date* - Until 31 July 2014

Port Hedland Port Authority Notice 66(T)/2014 (AA751945)

JUB *Driller One* is conducting drilling operations in position 20° 18'.3 S 118° 34'.4 E.

A 50m exclusion zone exists around the barge.

Chart temporarily affected - Aus 54**655(T)/2014 AUSTRALIA - WESTERN AUSTRALIA - Rosemary Island - Scientific instruments recovered***Former Notice* - 89(T)/2014 is cancelled

Department of Transport WA (AA752495)

Cancel this notice on receipt.

Chart formerly affected - Aus 57 - Aus 741 - Aus 742**656(T)/2014 INDIAN OCEAN - Gascoyne Plain - Light buoy off station**

Australian Bureau of Meteorology (AA752572)

The light buoy (13° 59'.0 S 110° 00'.0 E) is drifting and currently in position 14° 49'.22 S 109° 05'.30 E (1 July 2014).

Chart temporarily affected - Aus 4708 (INT 708) - Aus 4723 (INT 723) - AX 04708U - AX 04723U**657(T)/2014 AUSTRALIA - SOUTH AUSTRALIA - Fleurieu Peninsula - Haycock Point - Hulk**

Department of Planning, Transport and Infrastructure SA (AA751067, AA751219)

A stranded hulk, marked by a light *Fl.Y.4s*, exists in position 35° 25'.23 S 138° 18'.33 E.**Chart temporarily affected - Aus 485 - Aus 780**

658(T)/2014 AUSTRALIA - VICTORIA - Port Phillip - Anchorages charted*Former Notice* - 471(P)/2014 is cancelled

Victorian Notice 19/2014 (AA717682)

Cancel this notice on receipt.

Chart formerly affected - Aus 143 - Aus 155 - Aus 157**659(T)/2014 AUSTRALIA - VICTORIA - Port Phillip - River Yarra - Appleton Dock - Harbour works completed***Former Notice* - 75(T)/2013 is cancelled

Victorian Notice 115/2014 (AA751654)

Cancel this notice on receipt.

Chart formerly affected - Aus 154**660(T)/2014 AUSTRALIA - VICTORIA - Port Phillip - River Yarra - Victoria Dock - Harbour works; obstruction removed***Former Notice* - 394(T)/2014 is cancelled*Date* - Until 30 September 2014

Port of Melbourne Corporation Notice 116(T)/2014 (AA751659)

Works associated with the rehabilitation of Victoria Dock are in progress (37° 49'.1 S 144° 55'.7 E).

The berth east of the 230 chainage mark is temporarily closed.

Mariners are advised to navigate with caution in the area.

Chart temporarily affected - Aus 154**661(T)/2014 AUSTRALIA - VICTORIA - Port Phillip - Patterson River - Light beacon destroyed**

Victorian Notice 118(T)/2014 (AA751666)

The port lateral light beacon, *Fl(3)R.5s* (38° 04'.45 S 145° 07'.06 E), has been destroyed.**Chart temporarily affected - Aus 143****662(T)/2014 AUSTRALIA - VICTORIA - Port Phillip - Seaford - Beacon destroyed**

Victorian Notice 120(T)/2014 (AA751745)

The special beacon (38° 06'.05 S 145° 07'.32 E) has been destroyed.

Mariners are advised to navigate with caution in the area.

Chart temporarily affected - Aus 143**663(T)/2014 AUSTRALIA - VICTORIA - Port Phillip - Port Melbourne - Webb Dock - Harbour works***Date* - Until 30 November 2016

Victorian Notice 71(T)/2014 (AA733134)

Harbour works associated with the construction of a new international container terminal are in progress.

The berths 3E (37° 50'.60 S 144° 54'.45 E), 4E (37° 50'.73 S 144° 54'.54 E) and 5E (37° 50'.87 S 144° 54'.65 E) are temporarily unavailable for access.

Mariners are advised to navigate with caution in the area.

Chart temporarily affected - Aus 154

664(T)/2014 AUSTRALIA - VICTORIA - Port Phillip - Nav aids destroyed; piers and jetties
 Victorian Notice 117(T)/2014 (AA751783)

Nav aids in Port Phillip may be destroyed due to a recent storm event.

The following piers and jetties are currently closed for access:

Middle Brighton Pier
 Brookes Jetty
 Frankston Jetty
 Mordialloc Pier
 Black Rock Jetty
 North Road Jetty.

Mariners are advised to navigate with caution in the area.

Chart temporarily affected - Aus 143 - Aus 154 - Aus 155

665(T)/2014 AUSTRALIA - VICTORIA - Port Phillip - Brighton - Hulk
 Victorian Notice 122(T)/2014 (AA751898)

A stranded hulk, marked by three special light buoys Q.Y, exists in position 37° 54'.20 S 144° 58'.84 E.

Chart temporarily affected - Aus 155

666(T)/2014 AUSTRALIA - VICTORIA - Western Port - Phillip Island - Cape Woolamai - Scientific instrument southwestwards

Date - Until 1 September 2014

Victorian Notice 112(T)/2014 (AA750668)

A special light buoy, *Fl.Y.4s*, exists in position 38° 35'.69 S 145° 17'.99 E.

Chart temporarily affected - Aus 150 - Aus 487 - Aus 801

667(T)/2014 AUSTRALIA - VICTORIA - Western Port - North Arm - Drilling operations

Date - Until 30 September 2014

Victorian Notice 114(T)/2014 (AA752019, AA752221)

JUB *Sealift 1* is conducting drilling operations between positions 38° 24'.5 S 145° 15'.0 E and 38° 17'.0 S 145° 14'.5 E.

A 100m exclusion zone exists around the barge.

Chart temporarily affected - Aus 150 - Aus 151 - Aus 152

668(T)/2014 AUSTRALIA - VICTORIA - Western Port - Drilling operations completed; survey operations completed

Former Notice - 1296(T)/2013 is cancelled

Victorian Notice 114(T)/2014 (AA752019)

Cancel this notice on receipt.

Chart formerly affected - Aus 150 - Aus 151 - Aus 152

669(T)/2014 AUSTRALIA - TEMPORARY AND PRELIMINARY NOTICES

Former Notice - 399(T)/2014 is cancelled
 Australian Hydrographic Service (AA733945)

<i>Notice</i>	<i>Charts affected</i>	<i>Locality and Subject</i>
434/2014	Aus357 4644	BASS STRAIT Light unlit
217/2014	Aus196 198 199	NEW SOUTH WALES <i>Botany Bay</i> Depth information
457/2013	Aus197 204 215 489 809 4643 AX00215T 00809S	<i>Broken Bay</i> Light range reduced
699/2013	Aus197 200 201 AX00201T 63200	<i>Cabbage Tree Bay to Curl Curl Head</i> Scientific instruments
697/2013	Aus197 200 808 809 AX00808S 00809S 63200	<i>Cape Baily to Ben Buckler</i> Scientific instruments
496/2014	Aus222 812 813	<i>Clarence River</i> Harbour works
630/2014	Aus207 208 809 AX00809S	<i>Newcastle</i> Depth information
373/2014 497/2014	Aus200 201 AX00200T 00201T Aus200 202 AX00202T	<i>Port Jackson</i> Scientific instrument Scientific instrument
410/2011 864/2011 574/2014	Aus194 195 Aus194 195 Aus194	<i>Port Kembla</i> Spoil ground Obstruction Depth information
337/2013	Aus200 202 AX00202T	<i>Sydney</i> Harbour works
906/2013	Aus200 202 AX00202T	<i>Sydney Harbour</i> Depth information
641/2014	Aus23	NORTHERN TERRITORY <i>Apsley Strait</i> Light buoy off station
910/2012 1003/2012 1004/2012 1148/2012 518/2013 919/2013 70/2014 178/2014 536/2014	Aus28 Aus24 26 AX72026 Aus24 27 28 Aus26 28 AX72026 Aus26 AX00026T Aus24 26 27 28 AX00026T Aus26 28 AX00026T Aus24 Aus24 26 309 722 AX00026T 00309U 00309T 00722T	<i>Darwin</i> Obstruction Obstructions Depth information Scientific instruments Obstruction Scientific instruments Scientific instruments Scientific instruments Light altered Dredging; buoys
645/2014	Aus310 AX00310U	<i>Evans Shoal</i> Scientific instruments eastwards
1146/2012	Aus309 722 AX00309U 72309 72722	<i>Fenton Patches</i> Scientific instruments

669(T)/2014 AUSTRALIA - TEMPORARY AND PRELIMINARY NOTICES

<i>Notice</i>	<i>Charts affected</i>	<i>Locality and Subject</i>
		QUEENSLAND
374/2014	Aus825 826	<i>Abbot Point</i> Scientific instruments
631/2014	Aus253 268	<i>Abel Point</i> Dredging operations
1210/2011 167/2014	Aus268 Aus252 253 268	<i>Airlie Beach</i> Obstructions Wreck
872/2011	Aus254 825	<i>Bait Reef</i> Light beacon destroyed
269/2014	Aus268	<i>Bowen</i> Wreck
52/2014 168/2014 633/2014	Aus238 Aus238 Aus238	<i>Brisbane River</i> Drilling operations Harbour works Harbour works
105/2013 634/2014	Aus243 817 818 Aus242 243	<i>Bundaberg</i> Obstruction northeastwards Depth information
222/2014 339/2014	Aus242 Aus242	<i>Burnett River</i> Tide board Dredging operations
129/2014 412/2014 575/2014 576/2014	Aus263 Aus263 264 Aus263 264 Aus262 263 264 830 AX00262T	<i>Cairns</i> Wreck Pile driving Harbour works Depth information
1214/2013	Aus826 827	<i>Cape Bowling Green</i> Scientific instrument
559/2013	Aus256 827	<i>Cape Cleveland</i> Wreck
1098/2013	Aus831 AXA0830T	<i>Cape Tribulation</i> Wreck; exclusion zone
653/2013 414/2014 415/2014 635/2014	Aus270 Aus270 Aus270 Aus270	<i>Cooktown</i> Depth information Light buoys off station Wreck Dredging operations
602/2012	Aus818	<i>Curtis Channel</i> Wreck
447/2014	Aus832	<i>Decapolis Reef</i> Light beacon; light buoy
859/2012	Aus253 254	<i>Dent Island</i> Light beacon unlit; light buoy established
211/2013	Aus819	<i>Fitzroy River</i> Wreck

669(T)/2014 AUSTRALIA - TEMPORARY AND PRELIMINARY NOTICES

<i>Notice</i>	<i>Charts affected</i>	<i>Locality and Subject</i>
		<i>Gladstone</i>
418/2011	Aus245	Anchorage area
470/2011	Aus245 819	Scientific instruments
204/2013	Aus244 245 246	Depth information
206/2013	Aus245	Exclusion zone
207/2013	Aus244 245	Light buoys
704/2013	Aus246 819	Scientific instruments
57/2014	Aus244 245	Light beacons to be established
130/2014	Aus244 245 819	Harbour works
224/2014	Aus246 490 819	Light beacon destroyed; light buoy
271/2014	Aus244 245	Light buoy
340/2014	Aus245	Scientific instrument
377/2014	Aus244 245	Nav aids repositioned
579/2014	Aus245 246 819	Scientific instruments
		<i>Gold Coast</i>
272/2014	Aus230	Harbour works
		<i>Gold Coast Seaway</i>
694/2012	Aus230	Shoaling
737/2012	Aus230	Shoaling
		<i>Great Sandy Strait</i>
463/2013	Aus240 241	Wreck
1156/2013	Aus240	Wreck
1217/2013	Aus241	Wreck
		<i>Hay Point</i>
1091/2011	Aus249 250 AX0249E	Scientific instruments
1088/2012	Aus249 250 823	Exclusion zone; light buoys
1014/2013	Aus249 250 AX00249S	Depth information
1101/2013	Aus249 250 AX00249S	AIS trial
636/2014	Aus249 823 AX00249S 00823S	Racon non operational
		<i>Hervey Bay</i>
203/2013	Aus241 817	Light beacon destroyed
		<i>Hesket Rock</i>
318/2010	Aus251 823 824 AX0823E	Light beacon destroyed
		<i>Hinchinbrook Channel</i>
602/2013	Aus259 828	Wreck
		<i>Hook Island</i>
460/2012	Aus252 254	Light beacon destroyed
		<i>Io Reef</i>
1188/2010	Aus251 252 824	Light beacon destroyed; light buoy established
		<i>Karumba</i>
583/2014	Aus6	Depth information
		<i>Laguna Quays</i>
757/2011	Aus252	Lights unlit; light beacons damaged
758/2011	Aus252	Shoaling
		<i>Mackay</i>
158/2013	Aus249 AX00249S	Light beacon destroyed
1159/2013	Aus250	Depth information
		<i>Magnetic Island</i>
814/2013	Aus256	Obstruction
379/2014	Aus256	Scientific instrument

669(T)/2014 AUSTRALIA - TEMPORARY AND PRELIMINARY NOTICES

<i>Notice</i>	<i>Charts affected</i>	<i>Locality and Subject</i>
1104/2013 585/2014	Aus235 Aus235	<i>Mooloolaba</i> Light beacon damaged Shoaling
648/2011 1020/2011 600/2012 645/2012 740/2012 1085/2012 1265/2012 302/2013 1268/2013 229/2014 345/2014 450/2014 588/2014 590/2014 638/2014	Aus236 Aus236 Aus236 Aus236 Aus236 Aus236 Aus236 Aus236 Aus236 Aus236 Aus237 Aus236 Aus236 237 Aus236 Aus235 236 237 238 814 815	<i>Moreton Bay</i> Bridge construction Wreck; light buoy Shoaling Light beacon withdrawn Light beacon Beacon destroyed Light beacon destroyed Light beacon destroyed; light buoy established Light beacon destroyed Light beacon withdrawn Harbour works Scientific instruments Dredging operations Dredging operations Depth information
826/2011	Aus258	<i>Mourilyan</i> Depth information
651/2013	Aus253 268	<i>Muddy Bay</i> Harbour works
512/2013	Aus820 AX00820S	<i>North Keppel Island</i> Wreck
215/2013	Aus258	<i>Oyster Point</i> Shoaling; obstructions
210/2013 709/2013	Aus265 Aus247 265	<i>Port Alma</i> Depth information Scientific instruments
1274/2012	Aus270	<i>Port Douglas</i> Depth information
149/2013 1059/2013 1270/2013	Aus235 Aus235 236 Aus235 236	<i>Pumicestone Channel</i> Navais destroyed or off station; depths Light beacon unlit Wreck
64/2014	Aus828	<i>Rib Reef</i> Light buoy withdrawn
53/2013	Aus818	<i>Round Hill Head</i> Wreck
346/2014	Aus251 824	<i>Schooner Rock</i> Light beacon destroyed
592/2014	Aus248 260 261 367 490 820 822 AX00260T 00260S 00261L 00367S 00822S	<i>Shoalwater Bay</i> Live firing
763/2010	Aus252 253	<i>Shute Harbour</i> Wreck
1191/2010	Aus252 253 824	<i>Surprise Rock</i> Light beacon destroyed; light buoy established

669(T)/2014 AUSTRALIA - TEMPORARY AND PRELIMINARY NOTICES

<i>Notice</i>	<i>Charts affected</i>	<i>Locality and Subject</i>
59/2012	Aus293 299	<i>Thursday Island</i> Depth information
1061/2013	Aus257	<i>Townsville</i> Wreck
176/2014	Aus256 257	Depth information
232/2014	Aus256 257	Wreck
278/2014	Aus257	Harbour works
383/2014	Aus257	Dredging operations
639/2014	Aus257	Lights unlit
821/2013	Aus831	<i>Trinity Bay</i> Light buoy withdrawn
768/2013	Aus262 263 264 830 AX63262 AXA0830T	<i>Trinity Inlet to Haycock Island</i> Scientific instruments
1274/2013	Aus831 832	<i>Two Islands</i> Wreck
401/2013	Aus826	<i>Upstart Bay</i> Light buoy off station
167/2013	Aus4	<i>Weipa</i> Depth information
1223/2013	Aus4	Light beacon destroyed
640/2014	Aus4	Dredging operations
177/2014	Aus252 253	<i>Whitehaven Bay</i> Light beacon destroyed
1189/2010	Aus252 254 824	<i>Whitsunday Group</i> Light beacon destroyed; light buoy established
1193/2010	Aus252 253 254	<i>Whitsunday Island</i> Light beacon destroyed; light buoy established
1209/2012	Aus252 253	Wreck
1394/2010	Aus254	<i>Whitsundays</i> Buoy off station
1109/2013	Aus252 254 824	Light beacon destroyed
423/2014	Aus262 AX00262T	<i>Yorkeys Knob</i> Light beacon destroyed
657/2014	Aus485 780	SOUTH AUSTRALIA <i>Fleurieu Peninsula</i> Hulk
1344/2011	Aus781	<i>Gulf St Vincent</i> Obstruction
720/2008	Aus137	<i>Port Adelaide</i> Shoaling
305/2014	Aus137	Depth information
466/2014	Aus137	Dredging operations
515/2014	Aus137	Harbour works
194/2014	Aus121	<i>Port Douglas</i> Light beacon destroyed
467/2014	Aus348	<i>Port Macdonnell</i> Harbour works

669(T)/2014 AUSTRALIA - TEMPORARY AND PRELIMINARY NOTICES

<i>Notice</i>	<i>Charts affected</i>	<i>Locality and Subject</i>
71/2012	Aus133	<i>Wallaroo</i> Depth information
518/2014	Aus173 795 796	TASMANIA <i>Bruny Island</i> Scientific instrument
1074/2013	Aus487 798 800	<i>Cape Barren Island</i> Scientific instruments
609/2014	Aus173 795	<i>D'Entrecasteaux Channel</i> Obstruction
199/2014 201/2014	Aus179 800 Aus179 800	<i>Franklin Sound</i> Lights unreliable Shoaling; light unreliable
576/2012 551/2014	Aus171 796 Aus171 796	<i>Frederick Henry Bay</i> Scientific instruments Light beacon destroyed
91/2010	Aus169	<i>Georges Bay</i> Wreck
149/2014	Aus172	<i>Hobart</i> Beacon destroyed
552/2014	Aus173	<i>Huon River</i> Beacon destroyed
1189/2013 553/2014	Aus177 792 Aus177 792	<i>Macquarie Harbour</i> Scientific instruments Scientific instrument
122/2013	Aus170 766 797	<i>Maria Island</i> Scientific instruments
309/2014	Aus171 796	<i>Pipe Clay Head to Pitt Water</i> Scientific instruments
103/2014	Aus169 766	<i>Schouten Passage</i> Wreck
223/2009 648/2014	Aus312 4721 AX0312F 4721F Aus314 4721 4722 AX00314U 04721U 04722U	TIMOR SEA <i>Sahul Banks</i> Navaid; racon non operational Drill rig
983/2013	Aus292 293 299 700	TORRES STRAIT <i>Channel Rock</i> Wreck; light buoy
131/2012	Aus801	VICTORIA <i>Anderson Inlet</i> Shoaling
1291/2010	Aus357	<i>Ninety Mile Beach</i> Obstructions

669(T)/2014 AUSTRALIA - TEMPORARY AND PRELIMINARY NOTICES

<i>Notice</i>	<i>Charts affected</i>	<i>Locality and Subject</i>
		<i>Port Phillip</i>
942/2010	Aus153 157	Depth information
723/2011	Aus144 158	Shoaling
1346/2011	Aus144 158	Exclusion zones
772/2012	Aus143 155	Harbour works
935/2013	Aus143	Shoaling
937/2013	Aus144 158	Shoaling; virtual AIS
1184/2013	Aus143 144 158	Toe lines
1185/2013	Aus155	Light buoys
1232/2013	Aus143 157 158	Harbour works
147/2014	Aus143 144 158	AIS trial
197/2014	Aus143	Harbour works
473/2014	Aus154	Silt curtains
607/2014	Aus155	Harbour works
660/2014	Aus154	Harbour works; obstruction removed
661/2014	Aus143	Light beacon destroyed
662/2014	Aus143	Beacon destroyed
663/2014	Aus154	Harbour works
664/2014	Aus143 154 155	Navais destroyed; piers and jetties
665/2014	Aus155	Hulk
		<i>Western Port</i>
514/2008	Aus150 151	Shoaling northwards
102/2014	Aus150 151	AIS trial
240/2014	Aus150	Harbour works
474/2014	Aus152	Harbour works
608/2014	Aus150 151	Beacon destroyed
666/2014	Aus150 487 801	Scientific instrument southwestwards
667/2014	Aus150 151 152	Drilling operations
		WESTERN AUSTRALIA
		<i>Albany</i>
1108/2012	Aus109	Harbour works
		<i>Ashburton Road</i>
458/2014	Aus64 328 743 744	Pipeline
504/2014	Aus743 744	Scientific instrument
540/2014	Aus64 743	Anchorage; pilot boarding place; recommended track; pilotage area
		<i>Barrow Island</i>
425/2013	Aus62 67 742	Anchorage
523/2013	Aus62 66 327 328 742 743	Harbour works
77/2014	Aus327 328 4723 AX04723U	Gas field infrastructure northwards
283/2014	Aus62 66	Scientific instrument
388/2014	Aus62 66	Harbour Works
505/2014	Aus328 4723 AX04723U	Drill rig northwestwards
594/2014	Aus64 327 328 742 743 744	Pipeline westwards
649/2014	Aus328	Mooring buoys northwestwards
650/2014	Aus327 328	Pipeline
		<i>Bedout Island</i>
507/2014	Aus326 4722 AX04722U	Drill rig northwestwards
		<i>Broome</i>
233/2014	Aus50 51	Scientific instrument
		<i>Browse Island</i>
922/2013	Aus319 320 4721 4722 AX00319U 04721U 04722U	Drill rig northwestwards
		<i>Bunbury</i>
228/2013	Aus115	Shoaling

669(T)/2014 AUSTRALIA - TEMPORARY AND PRELIMINARY NOTICES

<i>Notice</i>	<i>Charts affected</i>	<i>Locality and Subject</i>
1284/2013	Aus68 742	<i>Cape Preston</i> Light buoys
509/2014	Aus73	<i>Carnarvon</i> Dredging operations
127/2012	Aus57 58	<i>Dampier</i> Obstructions
661/2012	Aus59	Light beacon damaged
271/2013	Aus57 741 742	Obstruction
564/2013	Aus59	Light buoys
137/2014	Aus58 59 60	Depth information
459/2014	Aus57 327 741 742 4722 4723 AX04722U 04723U	<i>Dampier Archipelago</i> Seismic survey northwestwards
595/2014	Aus327 741	Racon discontinued northwards
418/2012	Aus119	<i>Esperance</i> Depth information
428/2014	Aus4723 AX04723U	<i>Exmouth Plateau</i> Scientific instruments
141/2014	Aus116	<i>Flinders Bay</i> Harbour works
1057/2012	Aus113	<i>Fremantle</i> Depth information
1105/2012	Aus112 AX63112	Light beacon
433/2013	Aus81	<i>Geraldton</i> Depth information
544/2014	Aus64 743 744	<i>Herald Reef to Ashburton Road</i> Scientific instruments
1174/2013	Aus114 117 AX00117T	<i>Kwinana</i> Scientific instrument
355/2014	Aus52 53	<i>Manilya Sandbank</i> Scientific instrument
511/2014	Aus328 4723 AX04723U	<i>Montebello Islands</i> Drill rig northwestwards
512/2014	Aus328	Mooring buoys northwestwards
545/2014	Aus328 4723 AX04723U	Drill rig northwestwards
1291/2013	Aus328	<i>Montebello Islands northwestwards</i> Mooring buoy; pipeline infrastructure
613/2013	Aus61 62 63 66 67 742 743	<i>Montebello Islands to Barrow Island</i> Lit mooring buoys
189/2014	Aus754 AX00754S AXA0754S	<i>Mullaloo</i> Light buoy
86/2014	Aus328 329 744	<i>North West Cape</i> Drill rig northwards
191/2014	Aus328 329 744 4723 4725 AX04723U	FPSO off station
299/2014	Aus328 329 744 745 4723 4725 AX04723U	Light altered
430/2014	Aus329 4723 4725 AX04723U	Drill rig northwestwards

669(T)/2014 AUSTRALIA - TEMPORARY AND PRELIMINARY NOTICES

<i>Notice</i>	<i>Charts affected</i>	<i>Locality and Subject</i>
546/2014	Aus64	<i>Onslow</i> Scientific instruments
300/2014	Aus743	<i>Passage Islands</i> Obstructions
316/2013	Aus334 754 AX00334S 00754S AXA0754S	<i>Perth</i> Scientific instruments westwards
486/2013	Aus84	<i>Port Gregory</i> Shoaling
1068/2013 88/2014 654/2014	Aus52 54 Aus53 739 740 Aus54	<i>Port Hedland</i> Depth information Light beacons unlit; light buoys Drilling operations
713/2012	Aus327	<i>Rankin Bank</i> Scientific instrument northeastwards
144/2014	Aus327 328 329 4603 AX04603U	<i>Rankin Bank to Exmouth Plateau</i> Scientific instruments
602/2014 603/2014	Aus326 4722 4723 AX04722U 04723U Aus326 4722 4723 AX04722U 04723U	<i>Rowley Shoals</i> Drilling operations westwards Seismic survey westwards
514/2014	Aus322 4722 AX00322U 04722U	<i>Scott Reef</i> Drill rig northeastwards
303/2014	Aus322 4721 4722 AX00322U 04721U 04722U	<i>Seringapatam Reef</i> Drill rig eastwards
615/2013	Aus328 744 4060 4070 4708 4723 4725 AX04708U 04723U	<i>Serrurier Island</i> Mooring buoy off station northwards
428/2013	Aus64 743	<i>Thevenard Island to Ashburton Road</i> Dredging operations; exclusion zones
1034/2013	Aus64 743 744	<i>West Reef to Fly Island</i> Scientific instruments
INDIAN OCEAN		
656/2014	Aus4708 4723 AX04708U 04723U	<i>Gascoyne Plain</i> Light buoy off station
304/2014	Aus4070 4071	<i>Sumatera</i> Scientific instruments westwards
INDONESIA		
75/2014	Aus310 AX00310U	<i>Pulau Selaru</i> Scientific instruments southwestwards
PACIFIC OCEAN		
268/2014	Aus399 4622	Scientific instruments
PAPUA NEW GUINEA		
279/2014	Aus399 683 4622	<i>Bougainville Island</i> Lights unlit

669(T)/2014 AUSTRALIA - TEMPORARY AND PRELIMINARY NOTICES

<i>Notice</i>	<i>Charts affected</i>	<i>Locality and Subject</i>
771/2013	Aus392 393 543 666	<i>Cape Sueusat</i> Light unlit
166/2013	Aus388 4622	<i>Condor Point</i> Light unlit
904/2012	Aus643	<i>Lae</i> Dredging operations
164/2013	Aus628	<i>Nuakata Passage</i> Light beacon destroyed
404/2008 918/2013	Aus379 505 4620 Aus505 621	<i>Port Moresby</i> Fish aggregation device southwards Light beacon destroyed
384/2014	Aus386 387	<i>Vitiaz Strait</i> Light unlit
SOUTHERN OCEAN		
549/2014	Aus4709	<i>Cape Sorell</i> Light buoys withdrawn southwestwards
92/2014	Aus4727	<i>Great Australian Bight</i> Seismic survey

HYDROGRAPHIC REPORTS

<i>Locality</i>	<i>Report</i>	<i>Ship/Authority</i>	<i>Observer</i>
NSW- Broken Bay	Nomenclature, cables		S Ranft
QLD- Cape Tribulation	Exclusion zone		W Conlin
Gold Coast	Compass rose		G Turner
TAS- Hobart	ENC		A Boon

NAVIGATION WARNINGS

The following radio messages have been received during the period to 3 July 2014. Signal copies of these messages may be destroyed. It is recommended that the reprint of Navigational Warnings should be kept in a file or a book divided into areas. Cancellation should be made on receipt of signals and reprints.

Rigs on location other than those listed in the latest Section III summary are the subject of Radio Navigational Warnings. Rigs in transit will not be the subject of Warnings.

AUSCOAST WARNING

- 152 Drill rig *Stena Clyde* in position 11° 59'.60 S 124° 40'.30 E. 2.5M clearance requested.
- 153 Cancelled.
- 154 Special purpose vessel *Nor Captain* conducting underwater operations in an area bounded by 13° 49'.0 S to 14° 45'.0 S and 121° 25'.0 E to 122° 10'.0 E. 2M clearance requested.
- 155 Eight light buoys, *Fl.3s*, established in position 19° 58'.21 S 115° 12'.76 E.
- 156 Special purpose vessel *Aquila Explorer* conducting seismic survey in an area bounded by 16° 37'.17 S to 18° 01'.47 S and 116° 57'.26 E to 118° 28'.02 E. 10M clearance requested.
- 157 Cancelled.
- 158 Cancelled.
- 159 South Page racon ALRS Vol(2) K2114 in position 35° 46'.65 S 138° 17'.48 E temporarily discontinued.
- 160 A 1.8m diameter spherical yellow buoy, *Fl(5)Y.20s*, deployed and established in position 13° 54'.5 S 123° 14'.5 E. 2M clearance requested.

NAVAREA X WARNINGS

- 039 Cancelled.
- 040 Cancelled.

Navigational warnings in force as at 030001UTC JUL 14.**Auscoast**

2014 043 102 127 132 133 134 136 137 138 140 144 147 148 151 152 154 155 156 159 160

Navarea X

2014 028 033

Summary of mobile drilling rigs as at 030001UTC JUL 14.

<i>Name</i>	<i>Position</i>
Stena Clyde	11° 59'.60 S 124° 40'.30 E
Noble Clyde Boudreaux	13° 49'.00 S 123° 19'.35 E
Jack Bates	13° 41'.54 S 122° 48'.21 E
Transocean Legend	13° 40'.91 S 122° 23'.94 E
Atwood Eagle	18° 43'.22 S 118° 42'.23 E
Atwood Osprey	19° 48'.67 S 115° 17'.73 E
Ocean America	20° 27'.62 S 114° 50'.52 E
Deepwater Frontier	19° 47'.56 S 114° 38'.96 E
Atwood Falcon	21° 20'.97 S 114° 04'.40 E
Deepwater Millennium	21° 25'.82 S 113° 25'.60 E

NAVAREA XIV WARNINGS

Nil.

Navarea XIV warnings in force as at 030001UTC JUL 14.

2014 Nil.

19. INFORMATION CONCERNING SUBMARINES**Warning Signals**

1. Mariners are warned that considerable hazard to life may result from the disregard of the following signals which denote the presence of submarines:

(a) **Visual signals.** Australian warships fly the International Code Group "NE2" to denote that submarines, which may be submerged, are in the vicinity. Vessels are cautioned to steer so as to give a wide berth to any vessel flying this signal. If from any cause it is necessary to approach her, a good look-out must be kept for submarines whose presence may be indicated only by their periscopes or snort masts showing above the water.

(b) **Pyrotechnics and Smoke Candles.** The following signals are used by submerged submarines:

Signal

White smoke candle (with flame) and green pyro flare...

Signification

Indicates position in response to request from ship or aircraft or as required.

Red pyro flares.....
(may be accompanied by white smoke candles repeated as often as possible).

Keep clear. I am carrying out emergency surfacing procedure. Do not stop propellers. Clear the immediate area, but stand by to render assistance.

Note: If the red pyro flare signal is sighted and the submarine does not surface within 5 minutes it should be assumed that the submarine is in distress and has sunk. An immediate attempt should be made to fix the position in which the signal was sighted, after which action in accordance with *paras 13-19* should be taken.

2. It must not be inferred from the above that submarines exercise only when in company with escorting vessels.

White Smoke Candle

Use: Emits a flame as well as smoke and therefore is suitable for use by day or night
Duration: Six minutes – white smoke.
Features: May contain an additional message carrier and fluorescein box which produces a bright green stain on the water to indicate the presence of a message inserted in a watertight tube.

**Red/Green Pyrotechnic Flare**

Use: A flare is ejected up to 100m. Suitable for use by day or night
Duration: 30 – 40 seconds.



Image provided courtesy of the Department of the National Defense, Canada

Australian Submarine Exercise Area

3. The note *Submarine Exercise Area* on certain charts should not be read to mean that submarines do not exercise outside such areas. The whole of the Exclusive Economic Zone (EEZ) is a permanently established Australian submarine exercise area. Under certain circumstances warnings that submarines are exercising in specified areas may be broadcast by a coast radio station or promulgated in printed navigational warnings.

Navigation Lights

4. Submarines have their masthead and side lights placed well forward and very low over the water in proportion to the length and tonnage of these vessels. In particular:

- (a) some submarines can only show a forward masthead light in calm confined waters;
- (b) in other submarines the forward masthead light may be lower than the sidelights;
- (c) the main masthead light may be well forward of the mid-point of the submarine's length.

5. Stern lights are placed very low indeed, and may at times be partially obscured by spray and wash. In some cases the stern lights will be well forward of the after part of the submarine, and thus will not give a true indication of the submarine's length. They are invariably lower than the side lights.

6. The after light of nuclear submarines at anchor is mounted on the upper rudder which is some distance astern of the hull's surface waterline. Care must be taken to avoid confusion with two separate vessels of less than 50 metres in length.

7. The overall arrangement of submarine lights is therefore unusual and may well give the impression of markedly smaller and shorter vessels than they are. Their vulnerability to collision when proceeding on the surface and the fact that some submarines are nuclear powered dictates particular caution when approaching them. Nearly all submarines are fitted with an amber quick-flashing light situated above or abaft the main steaming light. This additional light is for use as an aid to identification in narrow waters and areas of dense traffic. Australian submarines will normally burn this identification light under the above conditions and when entering or leaving harbour at night.

8. Australian Collins Class submarines exhibit a very quick flashing yellow identification light (120 flashes per minute) VQ.Y. This identification light should not be confused with an air cushion vessel operating in a non-displacement mode which displays the same light.



Collins Class submarine illustrating typical navigation light configuration. The Collins Class will be progressively modified with the masthead light to be fitted atop the radar mast.

Sunken Submarine

9. A submarine that is disabled or in distress and unable to surface will indicate her position by firing red pyro flares, also referred to as red grenades, and Submarine Emergency Radio Beacons (see *paras 1 and 20*).

Note: It should be remembered that it may not be possible for a submarine to fire her flares or smoke candles. Correspondingly a partially flooded submarine may have only a certain number of her smoke candles available and searching ships should not therefore expect many to appear.

10. Since oil slicks or debris may be the only indication of the presence or whereabouts of the sunken submarine, it is vitally important that surface ships refrain from discharging anything which might appear to have come from a submarine while they are in the submarine probability area. Searching ships and aircraft can waste many valuable hours investigating these false contacts.

11. Some submarine pyrotechnics can be fitted with message carriers. If a message has been attached, the pyrotechnic will be fitted with a dye marker, giving off a green dye on the surface. Such a pyrotechnic should be recovered as soon as it has finished burning.

12. Collins Class submarines are fitted with the purpose Submarine Launched EPIRB (SERB). A description of the SERB is given at *para 20*.

13. The sighting of any aforementioned emergency flares (red grenade) or beacon should at once be reported by the quickest available means to the Australian Maritime Safety Authority (AMSA) Rescue Coordination Centre (**1800 641 792** or **+61 2 6230 6811**), the Navy or Police. However, if vessels are unable to establish communications without leaving the vicinity of the submarine, it should be borne in mind that the primary consideration should be for vessels to remain standing by to rescue survivors and not leave the scene of the accident. Every effort should be made to include in the report the serial number of the beacon; this number is affixed on top of the SERB (see *para 20*).

14. At any time after a submarine accident survivors may start attempting to escape. Current policy dictates that survivors will wait before escaping until:

- (a) rescue vessels are known to be standing by; or
- (b) conditions inside the submarine deteriorate to such an extent that an attempt to escape must be made.

15. It should be noted that, in certain circumstances the situation *para 14(b)* may not arise through lack of air supply until a time after the accident of several days. However, if the submarine is badly damaged, survivors may have to make an escape attempt immediately. Any ship finding a SERB should not therefore leave the position but stand by well clear ready to pick up survivors. The latter will ascent nearly vertically, and it is plainly important plenty of sea room is given to enable them to do so in safety. On arrival on the surface men may be exhausted or ill, and if circumstances are favourable therefore the presence of a boat already lowered is very desirable. Some men may require a recompression chamber, and it will therefore be the aim of the Naval authorities to get such a chamber to the scene as soon as possible.

16. In order that those trapped in the submarine shall be made aware that help is at hand, Navy vessels drop small charges into the sea, which can be heard from inside the submarine. There is no objection to the use of small charges for this purpose; but it is vital that they are not dropped too close since men in the process of making ascents are particularly vulnerable to underwater explosions and may easily receive fatal injuries. A distance of a quarter of a mile is considered to be safe. If no small charges are available, the running of an echo sounder or the banging of the outer skin of the ship's hull with a hammer from a position below the water-line is likely to be heard in the submarine, and such banging and/or sounding should therefore be carried out at frequent intervals.

17. Submarines may at any time release pyrotechnic floats, which on reaching the surface burn with flame and/or smoke thus serving to mark the position of the wreck. They are likely to acknowledge sound signals by this means.

18. To sum up, the aims of a submarine rescue operation are:

- (a) To fix the exact position of the submarine;
- (b) To get a ship standing by to pick up survivors if practicable with boats already lowered;
- (c) To get medical assistance to survivors picked up;
- (d) To get a diver's decompression chamber to the scene in case this is required by those seriously ill after being exposed to great pressure;
- (e) To inform the trapped men that help is at hand; and
- (f) To notify appropriate authorities.

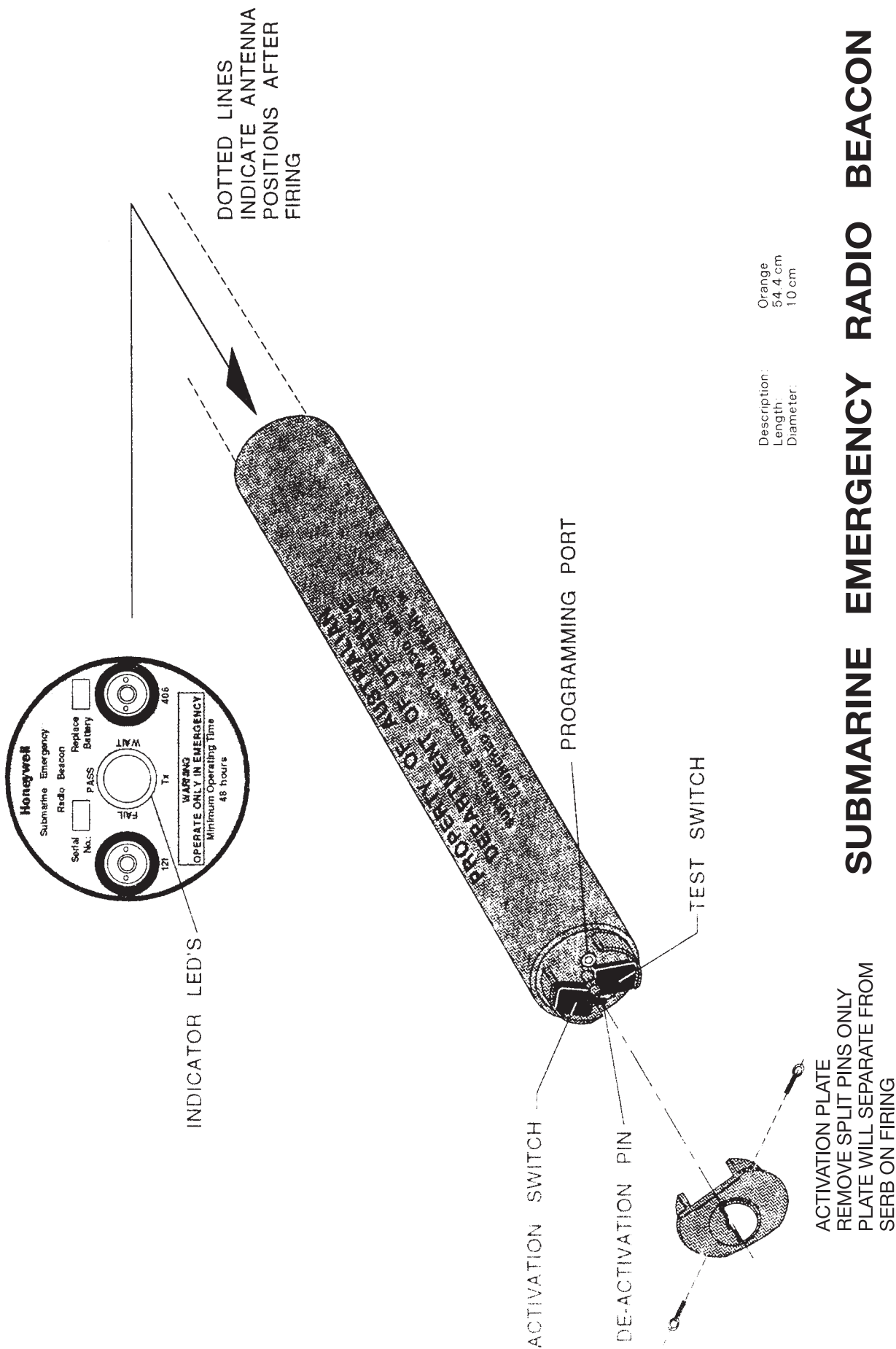
19. There is a large Navy organisation designed to fulfill these aims which is always kept at instant readiness for action. It is clear, however, that any ship may at anytime find evidence of a submarine disaster, and if she takes prompt and correct action as described above she may be in a position to play a vital part.

Submarine Emergency Radio Beacon (SERB).

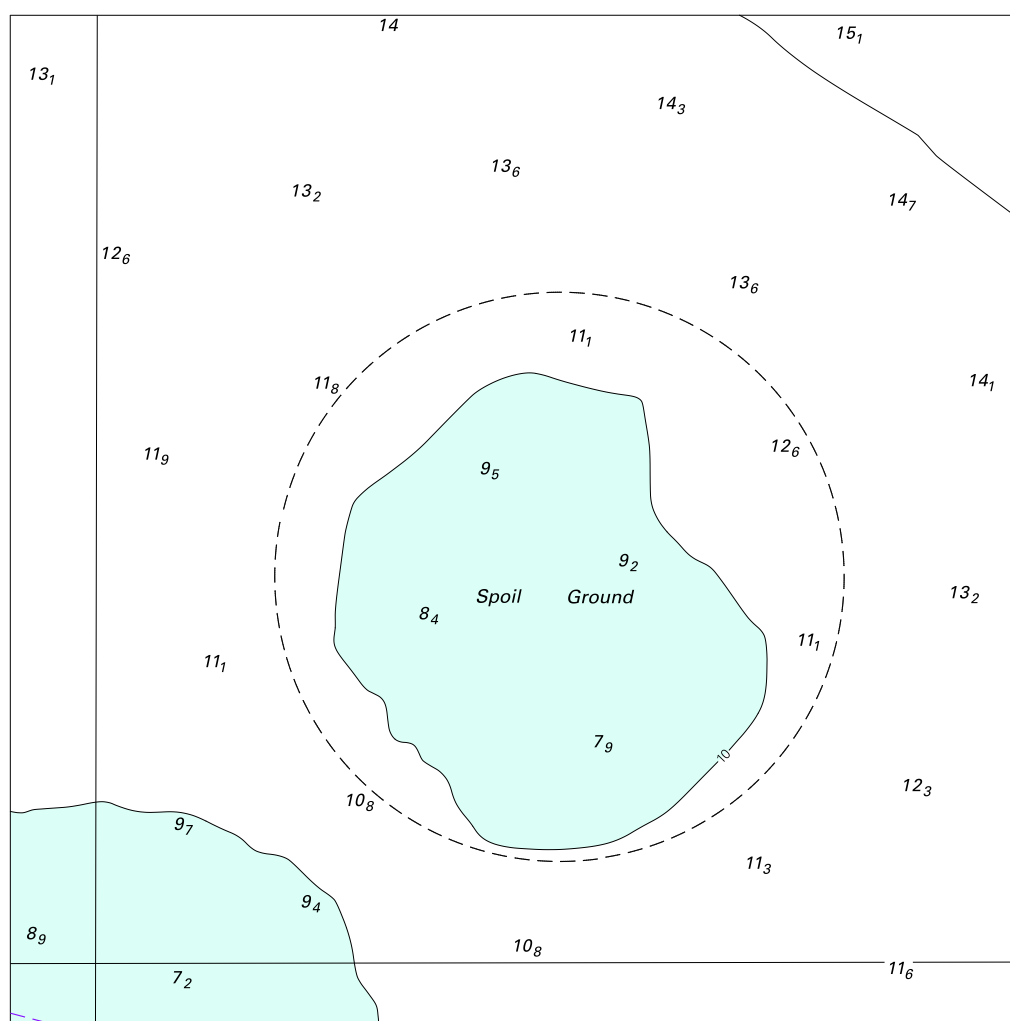
20. This beacon is made of aluminium, coloured orange and is cylindrical in shape, with two whip aerials. The beacon is fitted with an automatic transmitting unit, battery life of 48 hours operating on the following frequencies:

- (a) 406.025 MHz COSPAS-SARSAT/EPIRB Cospas/Sarsat.
- (b) 243 MHz Military Air Guard.
- (c) 121.5 MHz Civil Air Guard.

21. Beacons and flares may frequently be encountered in areas where HMA Ships and Aircraft exercise, whether or not submarines are present, and should not be confused with submarine emergency beacons and flares. In case of doubt the object should be approached at a safe distance to confirm, visually, whether or not it is a submarine emergency buoy or beacon before reporting it.



To accompany Australian Notice to Mariners 614/2014



Block for chart Aus 262

© Commonwealth of Australia 2014

(133.7 x 133.6mm)

To accompany Australian Notice to Mariners 614/2014

