



6 June 2014

Edition 11

Australian Notices to Mariners are the authority for correcting Australian Charts and Publications

AUSTRALIAN NOTICES TO MARINERS

Notices 519 - 554



Published fortnightly by the Australian Hydrographic Service

Commodore B.K. BRACE RAN
Hydrographer of Australia

SECTIONS.

- I. Australian Notices to Mariners, including blocks and notes.
- II. Hydrographic Reports.
- III. Navigational Warnings.

SUPPLEMENTS.

- I. Tracings
- II. Cumulative List of Australian Notices to Mariners.
- III. Cumulative List of Temporary and Preliminary Australian Notices to Mariners.
- IV. Temporary and Preliminary Notices in force.
- V. Amendments to Admiralty List of Lights and Fog Signals (Vol K), Radio Signals (NP 281(2), 282, 283(2), 285, 286(4)) and Sailing Directions (NP 9, 13, 14, 15, 33, 34, 35, 36, 39, 44, 51, 60, 61, 62, 100, 136).

© Commonwealth of Australia 2014

This work is copyright. Apart from any use permitted under the Copyright Act 1968, no part may be reproduced by any process, adapted, communicated or commercially exploited without prior written permission from The Commonwealth represented by the Australian Hydrographic Service.

IMPORTANT NOTICE

This edition of Notices to Mariners includes all significant information affecting AHS products which the AHS has become aware of since the last edition. All reasonable efforts have been made to ensure the accuracy and completeness of the information, including third party information, on which these updates are based. The AHS regards third parties from which it receives information as reliable, however the AHS cannot verify all such information and errors may therefore exist. The AHS does not accept liability for errors in third party information.

GENERAL INSTRUCTIONS

The substance of these notices should be inserted on the charts affected.

Bearings are referred to the true compass and are reckoned clockwise from North; those relating to lights are given as seen by an observer from seaward. Positions quoted in permanent notices relate to the horizontal datum for the chart(s). When preliminary or temporary notices affect multiple charts, positions will be provided in relation to only one horizontal datum and that datum will be specified. When the multiple charts do not have a common horizontal datum, mariners will be required to adjust the position(s) for those charts not on the specified datum. The range quoted for a light is its nominal range. Depths are with reference to the chart datum of each chart. Heights are above mean high water springs or mean higher high water, as appropriate.

The capital letter (P) or (T) after the number of any notice denotes a preliminary or temporary notice respectively, which are contained separately at the end of the permanent notices. A star (*) adjacent to the number of a notice indicates that the notice is based on original information.

REPORTING OF DANGERS

Mariners are particularly requested to notify the AUSTRALIAN HYDROGRAPHIC SERVICE, Locked Bag 8801 Wollongong, NSW 2500 (Fax 02-4223 6599, e-mail Hydro.NTM@defence.gov.au or, alternatively by filling in and submitting the [Hydrographic Notes](#) forms located on the web site – www.hydro.gov.au), immediately on the discovery of new dangers or suspected dangers to navigation. For changes or defects in aids to navigation notify AusSAR (Fax 02-6230 6868 or email rccaus@amsa.gov.au).

AUTHORISED USE

Copies of Australian notices are available free of charge from the Australian Hydrographic Service (AHS) website (www.hydro.gov.au) and through the eNotices (email) service (www.hydro.gov.au/enotices/enotices.htm).

Individual Notices may be copied for the purpose of inserting Notice substance on official charts and publications. Paper copies may be printed by chart agents and distributed to customers on a cost recovery basis. Participating chart agents are listed on the AHS website as providing a 'Paper Notices to Mariners' service (www.hydro.gov.au/prodserv/distributors/distributors.htm). Copies of the notices may not be sold for profit without prior written agreement.

NUMERICAL INDEX OF NOTICES TO MARINERS

Edition No 11

Notices	Aus Chart, INT Chart, ENC Cell, AHP, BA Pubs
519	Aus 144, 155, 252, 255, 256, 605, 825, 826, 827, 828
520	AusRNC service to be permanently withdrawn
521	Aus 220
522	Aus 200, AX 00200T
523	Aus 209
524	Aus 28
525	Aus 50, 51
526	Aus 57, 58, 59
527	Aus 741
528	Aus 119
529	Aus 113
530	Aus 32
531(T)	Aus 207, 208, 809, AX 00809S
532(T)	Aus 200, 202, AX 00202T
533(T)	Aus 245, 819
534(T)	Aus 235, 236, 237, 238, 814, 815
535(T)	Aus 26, 28, AX 00026T
536(T)	Aus 24, 26, 309, 722, AX 00026T, 00309U, 00309T, 00722T
537(T)	Aus 28
538(T)	Aus 26, 722, AX 00026T, 00722T
539(T)	Aus 26, 309, 722, AX 00026T, 00309T, 00309U, 00722T
540(T)	Aus 64, 743
541(T)	Aus 64, 328, 743
542(T)	Aus 59
543(T)	Aus 327, 328, 741, 742, 4722, 4723, INT 722, 723, AX 04722U, 04723U
544(T)	Aus 64, 743, 744
545(T)	Aus 328, 4723, INT 723, AX 04723U
546(T)	Aus 64
547(T)	Aus 43, 322, 4722, INT 722, AX 00322U, 04722U
548(T)	Aus 64, 743, 744
549(T)	Aus 4709, INT 709
550(T)	Aus 151
551(T)	Aus 171, 796
552(T)	Aus 173
553(T)	Aus 177, 792
554(T)	Aus 799

NUMERICAL INDEX OF CHARTS AFFECTED

Edition No 11

Aus Chart	Notices
Aus 24	536(T)
Aus 26	535(T), 536(T), 538(T), 539(T)
Aus 28	524, 535(T), 537(T)
Aus 32	530
Aus 43	547(T)
Aus 50	525
Aus 51	525
Aus 57	526
Aus 58	526
Aus 59	526, 542(T)
Aus 64	540(T), 541(T), 544(T), 546(T), 548(T)
Aus 113	529
Aus 119	528
Aus 144	519
Aus 151	550(T)
Aus 155	519
Aus 171	551(T)
Aus 173	552(T)
Aus 177	553(T)
Aus 200	522, 532(T)
Aus 202	532(T)
Aus 207	531(T)
Aus 208	531(T)
Aus 209	523
Aus 220	521
Aus 235	534(T)
Aus 236	534(T)
Aus 237	534(T)
Aus 238	534(T)
Aus 245	533(T)
Aus 252	519
Aus 255	519
Aus 256	519
Aus 309	536(T), 539(T)
Aus 322	547(T)
Aus 327	543(T)
Aus 328	541(T), 543(T), 545(T)
Aus 605	519
Aus 722	536(T), 538(T), 539(T)
Aus 741	527, 543(T)
Aus 742	543(T)
Aus 743	540(T), 541(T), 544(T), 548(T)
Aus 744	544(T), 548(T)
Aus 792	553(T)
Aus 796	551(T)
Aus 799	554(T)
Aus 809	531(T)
Aus 814	534(T)
Aus 815	534(T)
Aus 819	533(T)
Aus 825	519
Aus 826	519
Aus 827	519
Aus 828	519

Aus Chart	Notices
Aus 4709	549(T)
Aus 4722	543(T), 547(T)
Aus 4723	543(T), 545(T)
AX 00026T	535(T), 536(T), 538(T), 539(T)
AX 00200T	522
AX 00202T	532(T)
AX 00309T	536(T), 539(T)
AX 00309U	536(T), 539(T)
AX 00322U	547(T)
AX 00722T	536(T), 538(T), 539(T)
AX 00809S	531(T)
AX 04722U	543(T), 547(T)
AX 04723U	543(T), 545(T)

INT Chart	Notices
INT 709	549(T)
INT 722	543(T), 547(T)
INT 723	543(T), 545(T)

519 AUSTRALIA - Product

Australian Hydrographic Service (AA746732), UKHO (AA744652)

New Edition to be published shortly

<i>Chart</i>	<i>Title</i>	<i>Scale</i>	<i>Expected Publication Date</i>
Aus 144	Australia - South Coast - Victoria - The Rip	1:12 500	20 June 2014
Aus 155	Australia - South Coast - Victoria - Approaches to Port of Melbourne	1:37 500	20 June 2014
	Plan:		
	St Kilda	1:10 000	
	Brighton	1:10 000	
	Sandringham	1:10 000	
	Altona	1:7 500	
Aus 252	Australia - East Coast - Queensland - Whitsunday Group	1:75000	20 June 2014
	Plan:		
	Laguna Quays	1:12 500	
Aus 255	Australia - East Coast - Queensland - Approaches to Abbot Point	1:25 000	20 June 2014
	Plan:		
	Abbot Point Wharf	1:12 500	
Aus 256	Australia - East Coast - Queensland - Cleveland Bay and Approaches	1:50 000	20 June 2014
	Plan:		
	Cape Ferguson	1:10 000	
	Nelly Bay	1:7 500	
Aus 605	Australia - Southern Ocean - Heard and McDonald Islands	1:150 000	20 June 2014
	Plan:		
	Atlas Cove	1:50 000	
Aus 825	Australia - East Coast - Queensland - Whitsunday Island to Bowen	1:150 000	20 June 2014
Aus 826	Australia - East Coast - Queensland - Bowen to Cape Bowling Green	1:150 000	20 June 2014
Aus 827	Australia - East Coast - Queensland - Cape Bowling Green to Palm Isles	1:150 000	20 June 2014
Aus 828	Australia - East Coast - Queensland - Palm Isles to Brook Islands and Palm Passage	1:150 000	20 June 2014

Two Way Route

The new IMO adopted Two Way Route for the Great Barrier Reef and Torres Strait region will come into effect on 1 December 2014. From June to November 2014 the AHS will publish New Editions of Queensland coastal charts depicting the route in advance so mariners are aware of the additions and modifications.

Charts showing the new southern extension to the Two Way Route will be published progressively southward from Palm Isles. These will be followed by charts with modifications to the existing Two Way Route, published progressively northward from Palm Isles.

Updated Electronic Navigational Charts (ENC) will be released in parallel within similar timeframes.

Admiralty publication

<i>NP No</i>	<i>Title</i>	<i>Date</i>	<i>Remarks</i>
NP285	Admiralty List of Radio Signals. Global Maritime Distress and Safety System (GMDSS).	5/6/2014	The 2013/14 edition is cancelled.

For further details refer to the AHS website at www.hydro.gov.au for new edition and new chart stock arrival information.

When placing orders with a chart agent, mariners should advise whether their order pertains to the current edition or the new edition.

520 AUSTRALIA - Product - AusRNC service to be permanently withdrawn

Australian Hydrographic Service (AA746676)

The Australian Hydrographic Service will withdraw its commercial AusRNC service (formerly known as the Seafarer RNC service) from 30 June 2014. The last update CD to be dispatched under the commercial AusRNC service will be the June 2014 update CD.

The AusRNC service has been replaced by the AusENC service. Mariners seeking to shift from RNC to ENC should refer to the AHS website (www.hydro.gov.au/prodserv/prodserv.htm) for additional information and details of AusENC Distribution Agents. AusENC is sold in a range of packs at affordable prices with coverage tailored to domestic Australian operations and is supported by a free, web based, fortnightly update service.

Selected RNC charts will remain available via the UK Admiralty Raster Chart Service (ARCS).

521* AUSTRALIA - NEW SOUTH WALES - Brunswick River - Depths

Office of Environment and Heritage NSW, Fugro LADS Corporation (DHDB 2306267)

Aus 220 (plan, Brunswick River Entrance) [281/2012]

Insert	accompanying block	28° 32'.3 S	153° 33'.2 E
--------	--------------------	-------------	--------------

522* AUSTRALIA - NEW SOUTH WALES - Port Jackson - North Head - Depth southeastwards

UKHO (AA685748), CSIRO (DHDB 962628)

Aus 200 [206/2014]

Insert	depth, 61m	33° 51'.480 S	151° 23'.063 E
--------	------------	---------------	----------------

AX 00200T [206/2014]

Insert	depth, 61m	33° 51'.480 S	151° 23'.063 E
--------	------------	---------------	----------------

523* AUSTRALIA - NEW SOUTH WALES - Port Stephens - Salamander Bay - Historic wreck

Australian Hydrographic Service (AA745180)

Aus 209 [324/2013]

Insert	magenta legend <i>Historic Wk (see Note)</i>	32° 43'.18 S	152° 05'.57 E
--------	--	--------------	---------------

Delete	legend Wk	32° 43'.18 S	152° 05'.37 E
--------	-----------	--------------	---------------

524* AUSTRALIA - NORTHERN TERRITORY - Darwin - Bladin Point - Infrastructure; depths; light beacons

Darwin Port Corporation Notice 71/2014 (AA741335)

Aus 28 [486/2014]

Insert	accompanying block A	12° 30'.5 S	130° 54'.5 E
	accompanying block B	12° 30'.6 S	130° 55'.8 E

525* AUSTRALIA - WESTERN AUSTRALIA - Broome - Depths

Department of Transport WA (DHDB 2661215)

Aus 50 [1049/2013]

Substitute	depth, 4 ₉ m, enclosed by contour for depth, 5 ₄ m	18° 00'.0 S	122° 13'.3 E
------------	--	-------------	--------------

Aus 51 [545/2012]

Substitute	depth, 4 ₉ m, enclosed by contour for depth, 5 ₂ m	18° 00'.05 S	122° 13'.30 E
	depth, 4 ₈ m, enclosed by contour for depth, 5 ₁ m	18° 00'.54 S	122° 12'.93 E
	depth, 1 ₂ m, for depth, 1 ₆ m	18° 00'.61 S	122° 12'.92 E

526* AUSTRALIA - WESTERN AUSTRALIA - Dampier - Depths

Department of Transport WA (DHDB 2665157)

Aus 57 [212/2014]

Insert	depth, 14_8m , enclosed by contour	20° 31'.99 S	116° 40'.21 E
	depth, 14_8m , enclosed by contour	20° 31'.86 S	116° 42'.27 E

Aus 58 [212/2014]

Insert	depth, 14_8m , enclosed by contour	20° 31'.989 S	116° 40'.213 E
	depth, 14_8m , enclosed by contour	20° 31'.858 S	116° 42'.272 E

Aus 59 [364/2014]

Insert	depth, 5_9m	20° 34'.957 S	116° 43'.627 E
Delete	depth, 6_1m	20° 34'.94 S	116° 43'.62 E

527* AUSTRALIA - WESTERN AUSTRALIA - Dampier - Mermaid Sound - Channel

Dampier Port Authority (AA744996)

Aus 741 [407/2014]

Insert	accompanying block	20° 31'.0 S	116° 44'.0 E
--------	--------------------	-------------	--------------

528* AUSTRALIA - WESTERN AUSTRALIA - Esperance - Nav aids

Esperance Ports Sea and Land (AA735185)

Aus 119 (plan, Esperance) [442/2014]

Insert	light, <i>Oc.Bu.5s 69m 5M (F Day)</i>	33° 52'.559 S	121° 53'.811 E
	dashed line with legend, 209·9°, between	33° 52'.559 S	121° 53'.811 E
		33° 52'.023 S	121° 54'.181 E
	starboard lateral topmark	33° 52'.008 S	121° 53'.890 E
Amend	elevation to $30m$	33° 52'.25 S	121° 53'.64 E
	elevation to $12m$	33° 52'.21 S	121° 53'.73 E
	elevation to $7m$	33° 52'.01 S	121° 53'.89 E
Move	light	33° 52'.38 S	121° 53'.94 E
	to	33° 52'.392 S	121° 53'.927 E
Delete	light	33° 52'.56 S	121° 53'.82 E
	dashed line with legend, 209·9°, between	33° 52'.56 S	121° 53'.82 E
		33° 52'.05 S	121° 54'.17 E

529* AUSTRALIA - WESTERN AUSTRALIA - Fremantle - Lights

Fremantle Ports Notice 1/2014 (AA744884)

Aus 113 [1051/2013]

Insert	light, <i>F.R</i>	32° 02'.618 S	115° 45'.091 E
	light, <i>F.R</i>	32° 02'.643 S	115° 45'.128 E
	a dashed line in a direction 309·1° for a distance of 350m, with legend $129·1^\circ$, emanating from light	32° 02'.643 S	115° 45'.128 E

530* AUSTRALIA - WESTERN AUSTRALIA - Pender Point - Depths

Department of Transport WA (DHDB 2644266)

Aus 32 (plan, Approaches to Wyndham Wharf) [1208/2013]

Insert	accompanying block	15° 20'.0 S	128° 06'.0 E
--------	--------------------	-------------	--------------

531(T)/2014 AUSTRALIA - NEW SOUTH WALES - Newcastle - Depth information

Former Notice - 410(T)/2014 is cancelled
Newcastle Port Corporation (AA745056)

Available depths as at 28 May 2014:

<i>Berth</i>	<i>Metres</i>	<i>Remarks</i>
Eastern Basin 1	11.4	
Eastern Basin 2 North of Ch 450	11.6	
Eastern Basin 2 South of Ch 450	11.5	
Western Basin 3	11.6	
Western Basin 4	11.6	
Channel Berth	9.7	
Dyke 1	12.8	
* Dyke 2	12.8	
Dyke 4	16.2	
Dyke 5	16.0	
Dyke 6	5.0	
Mayfield 4 Ch 27 to 266	12.7	
BHP Wharf 6 to Ch 1050	7.6	
Kooragang 2	11.6	
Kooragang 2 North Dolphin Ch 182 to 243	11.6	
* Kooragang 2 South Dolphin Ch -92 to 00	11.5	
Kooragang 3 Ch -40 to 00	11.8	
Kooragang 3 Ch 00 to 220	13.1	
Kooragang 4	16.5	
Kooragang 5	16.5	
Kooragang 6	16.5	
Kooragang 7	16.5	
Kooragang 8	16.3	
Kooragang 9	16.3	
* Kooragang 10	15.9	
* Throsby 1 Ch 850 to 1030	8.9	
Carrington Wharf		To be sounded as and when required
Foreshore Park Berth	5.9	
Elgo Wharf		To be sounded as and when required
<i>Channels</i>		
Entrance Approach	17.7	
Entrance Channel (18.0m)	17.8	
Entrance Channel (17.4m)	17.4	
Entrance Channel (16.8m)	16.8	
Entrance Channel (16.2m)	16.2	
Entrance Channel to Horseshoe	15.2	
Horseshoe	15.1	
Steelworks Channel to Swinging Basin	15.1	
Swinging Basin	14.8	
Hunter River South Arm (Kooragang 6 to buoy 16)	14.9	
Hunter River South Arm (buoy 16 to buoy 20)	14.8	
Basin Cutting	12.6	
Basin Area to Eastern & Western Basin Berths	12.3	
Basin Area to 1 Throsby	9.4	
Stockton Crossing	3.6	
* Indicates new or revised entry.		

Chart temporarily affected - Aus 207 - Aus 208 - Aus 809 - AX 00809S

532(T)/2014 AUSTRALIA - NEW SOUTH WALES - Port Jackson - Goat Island - Scientific instrument recovered

Former Notice - 337(T)/2014 is cancelled
Sydney Ports Corporation Notice 7/2014 (AA730209)

Cancel this notice on receipt.

Chart formerly affected - Aus 200 - Aus 202 - AX 00202T

533(T)/2014 AUSTRALIA - QUEENSLAND - Gladstone - Curtis Island - Pipeline removed

Former Notice - 225(T)/2014 is cancelled

Maritime Safety Queensland Notice 102(T)/2014 (AA723559)

Cancel this notice on receipt.

Chart formerly affected - Aus 245 - Aus 819

534(T)/2014 AUSTRALIA - QUEENSLAND - Moreton Bay - Brisbane River - Depth information

Former Notice - 500(T)/2014 is cancelled

Brisbane Port Corporation (AA746633)

Available depths and under keel clearances (UKC) at 3 June 2014:

<i>Berth</i>	<i>Metres</i>	<i>Remarks</i>
Fisherman Islands No12	13.8	
Fisherman Islands No11	14.0	
* Fisherman Islands No10	14.0	
Fisherman Islands No9	14.0	
* Fisherman Islands No8	13.7	
Fisherman Islands No7	13.7	
Fisherman Islands No6	13.8	
Fisherman Islands No5	13.7	
* Fisherman Islands No4	13.6	
* Fisherman Islands No3	13.8	
* Fisherman Islands No2	13.9	
* Fisherman Islands No1	13.8	
Fisherman Islands Grain and Woodchip	13.0	
Caltex Fisherman Islands	14.5	
Fisherman Islands Coal	13.8	
* Fisherman Islands General Purpose	11.3	
BP Luggage Point	13.9	
Caltex Products	10.1	
Cement Australia Co Wharf	9.6	
* BP Products	10.9	
* Shell	10.8	
Graincorp Liquid Terminal	10.4	
Incitec North	10.1	
* Incitec South	9.3	
* Pinkenba 1	10.4	
* Pinkenba 2	10.4	
Riverside Marina	-	
Sugar Terminal	9.7	
Cairncross Fitting Out Wharf	7.1	
Cairncross Breasting Wharf	4.4	
Brisbane Naval Wharf	4.3	
* Maritime No1	8.7	
Hamilton No4	10.3	
* Hamilton No1	8.8	
* Brisbane Cruise Ship Terminal	8.8	
	<i>Metres</i>	<i>UKC/Remarks</i>
<i>Moreton Bay:</i>		
North West Channel	15.0	2.3 (280m width)
North West Bypass Channel	9.2	1.6
Spitfire Channel	15.0	1.5 (600m width)
East Knoll Bypass Channel	6.0	1.4
East Channel	15.0	1.5 (300m width from western side)
Main Channel (M8 - M9)	10.0	1.8
Entrance Channel (E5 - EBCN)	14.7	1.5
<i>Brisbane River:</i>		
Outer Bar Cutting	13.7	1.46
Inner Bar Cutting	13.7	1.46
Fisherman Islands Swing Basin	13.7	1.3
River	9.1	0.6 / 0.9 (draft/tide)
Cement Australia Swing Basin	9.1	0.6 / 0.9 (draft/tide)
* Pinkenba Swing Basin	9.0	0.6 / 0.9 (draft/tide)
* Hamilton Swing Basin	8.7	0.6 / 0.9 (draft/tide)
* Indicates new or revised entry.		

Chart temporarily affected - Aus 235 - Aus 236 - Aus 237 - Aus 238 - Aus 814 - Aus 815

535(T)/2014 AUSTRALIA - NORTHERN TERRITORY - Darwin - Bladin Point - Harbour works completed; light beacons established

Former Notices - 873(T)/2013, 1063(P)/2013 are cancelled
Darwin Port Corporation Notice 71/2014 (AA741335)

Cancel this notice on receipt.

Chart formerly affected - Aus 26 - Aus 28 - AX 00026T

536(T)/2014 AUSTRALIA - NORTHERN TERRITORY - Darwin - Charles Point Patches to Middle Arm - Dredging; buoys

Former Notice - 425(T)/2014 is cancelled
Darwin Port Corporation Notice 77/2014 (AA745003)

The dredges *Simpson* and *Baldur*, and barges *Cornelis Lely*, *Pieter Caland*, *Murray River* and *Yarra River*, and support vessels MT *Skinfax R*, MT *Bhagwan Houtman*, *Voe Jarl* and *Warrigal* are conducting dredging operations parallel to the existing submarine gas pipeline between positions 12° 32'.15 S 130° 50'.65 E and 12° 19'.75 S 130° 39'.75 E.

Temporary anchors marked by special cylindrical buoys exist in position 12° 32'.01 S 130° 51'.91 E and 12° 32'.08 S 130° 52'.01 E.

A 250m radius safety zone exists around all vessels.

A pipeline comprising of a 200m floating section and an 800m submarine section exists between 12° 32'.05 S 130° 51'.96 E and the shore in approximate position 12° 32'.15 S 130° 52'.52 E. The pipeline will be marked every 50m by special light buoys.

Chart temporarily affected - Aus 24 - Aus 26 - Aus 309 - Aus 722 - AX 00026T - AX 00309U - AX 00309T - AX 00722T

537(T)/2014 AUSTRALIA - NORTHERN TERRITORY - Darwin - East Arm - Light beacons charted

Former Notice - 1282(P)/2013 is cancelled
Darwin Port Corporation Notice 46/2014 (AA735215)

Notice 486/2014 refers.

Cancel this notice on receipt.

Chart formerly affected - Aus 28

538(T)/2014 AUSTRALIA - NORTHERN TERRITORY - Darwin - Middle Pass - Dredging operations completed

Former Notice - 352(T)/2014 is cancelled
Darwin Port Corporation Notice 80/2014 (AA746560)

Cancel this notice on receipt.

Chart formerly affected - Aus 26 - Aus 722 - AX 00026T - AX 00722T

539(T)/2014 AUSTRALIA - NORTHERN TERRITORY - Darwin - Middle Pass - Shoaling dispersed

Former Notice - 456(T)/2014 is cancelled
Darwin Port Corporation Notice 80/2014 (AA746560)

Cancel this notice on receipt.

Chart formerly affected - Aus 26 - Aus 309 - Aus 722 - AX 00026T - AX 00309T - AX 00309U - AX 00722T

540(T)/2014 AUSTRALIA - WESTERN AUSTRALIA - Ashburton Road - Anchorages; pilot boarding place; recommended track; pilotage area

Date - Until 30 June 2016

Dampier Port Authority Notice 5/2014 (AA746605)

Temporary anchorages with a 400m radius swinging circle exist as follows:

<i>Anchorage design</i>	<i>Position</i>
A1	21° 30'.24 S 115° 02'.32 E
A2	21° 30'.73 S 115° 02'.31 E
A3	21° 31'.20 S 115° 02'.30 E
A4	21° 32'.31 S 114° 57'.45 E
A5	21° 32'.32 S 114° 57'.94 E
A6	21° 32'.78 S 114° 57'.45 E
A7	21° 32'.78 S 114° 57'.94 E
A8	21° 32'.32 S 114° 58'.43 E
A9	21° 32'.79 S 114° 58'.43 E

A temporary pilot boarding place exists in position 21° 35'.84 S 115° 00'.50 E.

A temporary recommended track bearing 142° - 322° exists between positions 21° 32'.78 S 114° 57'.94 E and 21° 35'.84 S 115° 00'.50 E.

A temporary compulsory pilotage area exists south of a line between positions 21° 37'.00 S 114° 56'.78 E and 21° 37'.00 S 115° 04'.56 E within the port limit.

Chart temporarily affected - Aus 64 - Aus 743

541(T)/2014 AUSTRALIA - WESTERN AUSTRALIA - Ashburton Road to Moresby Shoals - Scientific instruments recovered

Former Notice - 116(T)/2013 is cancelled

Department of Transport WA (AA746495)

Cancel this notice on receipt.

Chart formerly affected - Aus 64 - Aus 328 - Aus 743

542(T)/2014 AUSTRALIA - WESTERN AUSTRALIA - Dampier - King Bay - Light buoys restored

Former Notice - 1226(T)/2013 is cancelled

Dampier Port Authority (AA746478)

Cancel this notice on receipt.

Chart formerly affected - Aus 59

543(T)/2014 AUSTRALIA - WESTERN AUSTRALIA - Dampier Archipelago - Seismic survey northwestwards completed

Former Notice - 81(T)/2014 is cancelled

Woodside Energy Ltd (AA746574)

Cancel this notice on receipt.

Chart formerly affected - Aus 327 - Aus 328 - Aus 741 - Aus 742 - Aus 4722 (INT 722) - Aus 4723 (INT 723) - AX 04722U - AX 04723U

544(T)/2014 AUSTRALIA - WESTERN AUSTRALIA - Herald Reef to Ashburton Road - Scientific instruments
 Department of Transport WA Notice 110/2014 (AA745401)

Scientific instruments marked by special light buoys, *Fl.Y.6s*, exist in the following positions:

21° 29'.35 S 115° 11'.16 E
 21° 30'.15 S 115° 05'.86 E
 21° 31'.88 S 115° 04'.84 E
 21° 37'.08 S 115° 02'.65 E
 21° 37'.11 S 115° 01'.01 E
 21° 36'.93 S 115° 00'.22 E
 21° 38'.45 S 114° 58'.35 E.

Chart temporarily affected - Aus 64 - Aus 743 - Aus 744

545(T)/2014 AUSTRALIA - WESTERN AUSTRALIA - Montebello Islands - Drill rig northwestwards

Former Notice - 429(T)/2014 is cancelled

Date - Until 2 July 2014

MODU *Deepwater Frontier* (AA746620, AA746640), Australian Maritime Safety Authority Auscoast Warning 136/2014 (AA746622)

MODU *Deepwater Frontier* is conducting drilling operations in position 19° 47'.56 S 114° 38'.96 E.

Chart temporarily affected - Aus 328 - Aus 4723 (INT 723) - AX 04723U

546(T)/2014 AUSTRALIA - WESTERN AUSTRALIA - Onslow - Beadon Creek - Scientific instruments

Date - Until 31 December 2014

Department of Transport WA Notice 106/2014 (AA744998)

Scientific instruments marked by orange buoys exist in the following positions:

21° 38'.37 S 115° 07'.97 E
 21° 38'.53 S 115° 07'.91 E
 21° 38'.66 S 115° 07'.92 E
 21° 38'.82 S 115° 07'.92 E
 21° 38'.86 S 115° 07'.92 E
 21° 39'.21 S 115° 07'.92 E.

Chart temporarily affected - Aus 64

547(T)/2014 AUSTRALIA - WESTERN AUSTRALIA - Scott Reef - Survey operations completed

Former Notice - 302(T)/2014 is cancelled

Woodside Energy Ltd (AA746607)

Cancel this notice on receipt.

Chart formerly affected - Aus 43 - Aus 322 - Aus 4722 (INT 722) - AX 00322U - AX 04722U

548(T)/2014 AUSTRALIA - WESTERN AUSTRALIA - Thevenard Island - Scientific instruments recovered

Former Notice - 91(T)/2014 is cancelled

Department of Transport WA (AA745675)

Cancel this notice on receipt.

Chart formerly affected - Aus 64 - Aus 743 - Aus 744

549(T)/2014 SOUTHERN OCEAN - Cape Sorell - Light buoys withdrawn southwestwards

CSIRO (AA745505)

The light buoy, *Fl.Y.6s* (46° 45'.9 S 141° 58'.0 E), and light buoy, *Fl.3s* (46° 56'.3 S 142° 17'.1 E), have been temporarily withdrawn.

Chart temporarily affected - Aus 4709 (INT 709)

550(T)/2014 AUSTRALIA - VICTORIA - Western Port - Yaringa - Dredging operations completed

Former Notice - 101(T)/2014 is cancelled
 Victorian Notice 187(T)/2013 (AA715166)

Cancel this notice on receipt.

Chart formerly affected - Aus 151

551(T)/2014 AUSTRALIA - TASMANIA - Frederick Henry Bay - Whale Rock - Light beacon destroyed

Marine and Safety Tasmania Notice M71/2014 (AA745772)

The isolated danger light beacon, *Fl(2)6s 7m 2M* (42° 52'.74 S 147° 35'.88 E), has been destroyed.

Chart temporarily affected - Aus 171 - Aus 796

552(T)/2014 AUSTRALIA - TASMANIA - Huon River - Eggs and Bacon Bay - Beacon destroyed

Marine and Safety Tasmania Notice M67/2014 (AA744999)

The starboard lateral beacon (43° 14'.93 S 147° 05'.60 E) has been destroyed.

Chart temporarily affected - Aus 173

553(T)/2014 AUSTRALIA - TASMANIA - Macquarie Harbour - Scientific instrument

Former Notice - 1297(T)/2013 is cancelled

Date - Until 31 January 2015

Marine and Safety Tasmania M129/2013 (AA711802)

A scientific instrument 15m below the surface exists in position 42° 20'.82 S 145° 25'.20 E

Chart temporarily affected - Aus 177 - Aus 792

554(T)/2014 AUSTRALIA - TASMANIA - Port Sorell - Lights restored

Former Notice - 475(T)/2014 is cancelled

Marine and Safety Tasmania Notice M74/2014 (AA746590)

Cancel this notice on receipt.

Chart formerly affected - Aus 799

HYDROGRAPHIC REPORTS

Nil Reports

NAVIGATION WARNINGS

The following radio messages have been received during the period to 5 June 2014. Signal copies of these messages may be destroyed. It is recommended that the reprint of Navigational Warnings should be kept in a file or a book divided into areas. Cancellation should be made on receipt of signals and reprints.

Rigs on location other than those listed in the latest Section III summary are the subject of Radio Navigational Warnings. Rigs in transit will not be the subject of Warnings.

AUSCOAST WARNING

- 128 Cancelled.
- 129 Special purpose vessel *Polar Duchess* conducting seismic survey, towing 12 x 8000m length cables, in an area bounded by 34° 40'.0 S to 36° 06'.0 S and 131° 11'.0 E to 133° 00'.0 E. 7M clearance requested.
- 130 Special purpose vessel *Mermaid Investigator* conducting seismic survey in an area bounded by 13° 44'.0 S to 14° 00'.0 S and 123° 05'.0 E to 123° 20'.0 E. 2.5M clearance requested.
- 131 Cancelled.
- 132 Hannah Island light K3228 in position 13° 51'.79 S 143° 42'.86 E permanently discontinued.
- 133 Spencer Gulf Y2 light buoy established in position 33° 15'.83 S 137° 32'.80 E.
- 134 Spencer Gulf Y1 light buoy established in position 33° 16'.36 S 137° 32'.17 E.
- 135 Cancelled.
- 136 Drill rig *Deepwater Frontier* in position 19° 47'.56 S 114° 38'.96 E. 2.5M clearance requested.
- 137 Special purpose vessel *Geo Caspian* conducting seismic survey in an area bounded by 19° 50'.0 S to 20° 16'.0 S and 116° 00'.0 E to 116° 35'.0 E. 6M clearance requested.
- 138 Spencer Gulf Y3 light buoy moved approximately 0.06M north to 33° 15'.18 S 137° 32'.88 E.
- 139 Cancelled.
- 140 Quetta Rock buoy AIS aid to navigation MMSI 995031040 in position 10° 40'.24 S 142° 37'.49 E inoperative.
- 141 Cancelled.

NAVAREA X WARNINGS

- 032 Cancelled.
- 033 Dangerous wreck located in position 15° 31'.33 S 167° 43'.16 E.

Navigational warnings in force as at 050001UTC JUN 14.**Auscoast**

2014 043 074 079 089 095 099 102 108 113 115 118 119 120 122 126 127 129 130 132 133 134 136 137 138 140

Navarea X

2014 028 033

Summary of mobile drilling rigs as at 050001UTC JUN 14.

<i>Name</i>	<i>Position</i>
Nan Hai 6	9° 50'.20 S 130° 20'.40 E
Stena Clyde	11° 16'.50 S 125° 25'.75 E
Noble Clyde Boudreaux	13° 49'.00 S 123° 19'.35 E
Jack Bates	13° 41'.54 S 122° 48'.21 E
Transocean Legend	13° 40'.91 S 122° 23'.94 E
Atwood Eagle	18° 43'.22 S 118° 42'.23 E
Atwood Osprey	19° 48'.67 S 115° 17'.73 E
Ocean America	20° 27'.62 S 114° 50'.52 E
Deepwater Frontier	19° 47'.56 S 114° 38'.96 E
Atwood Falcon	21° 20'.97 S 114° 04'.40 E
Deepwater Millennium	21° 25'.82 S 113° 25'.60 E

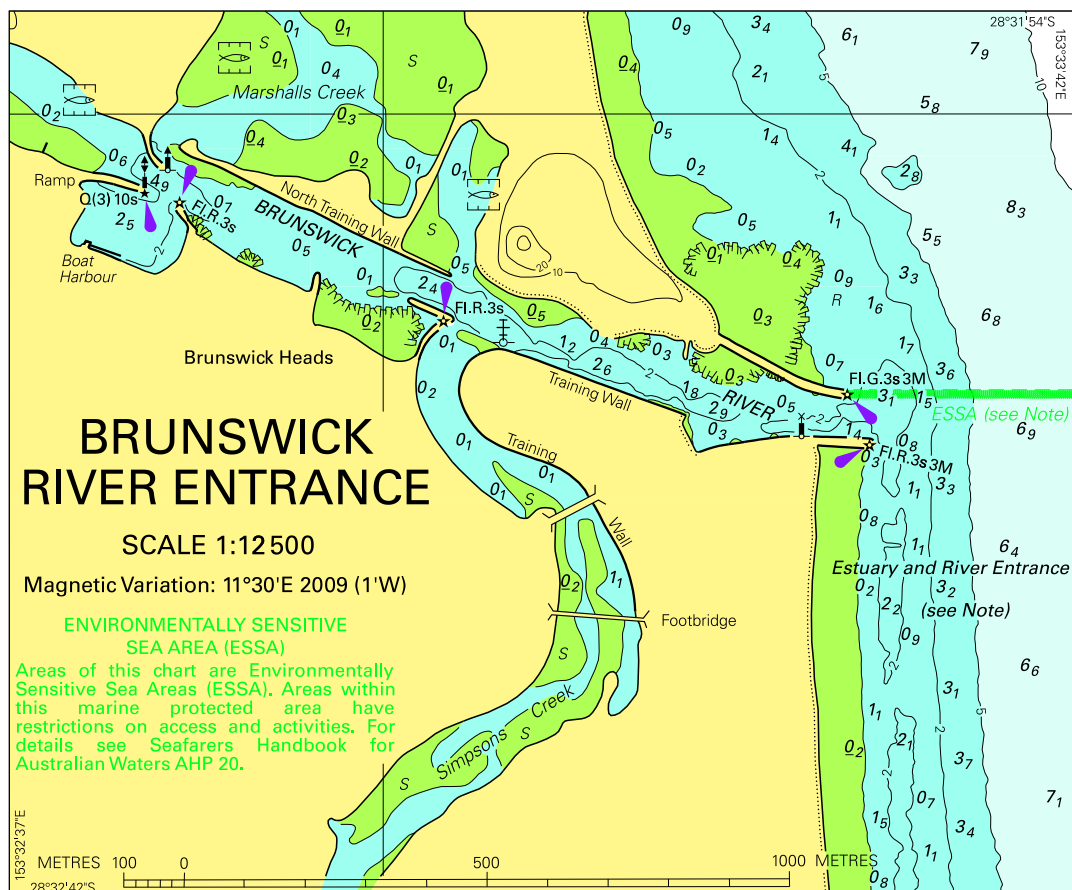
NAVAREA XIV WARNINGS

Nil.

Navarea XIV warnings in force as at 050001UTC JUN 14.

2014 Nil.

To accompany Australian Notice to Mariners 521/2014

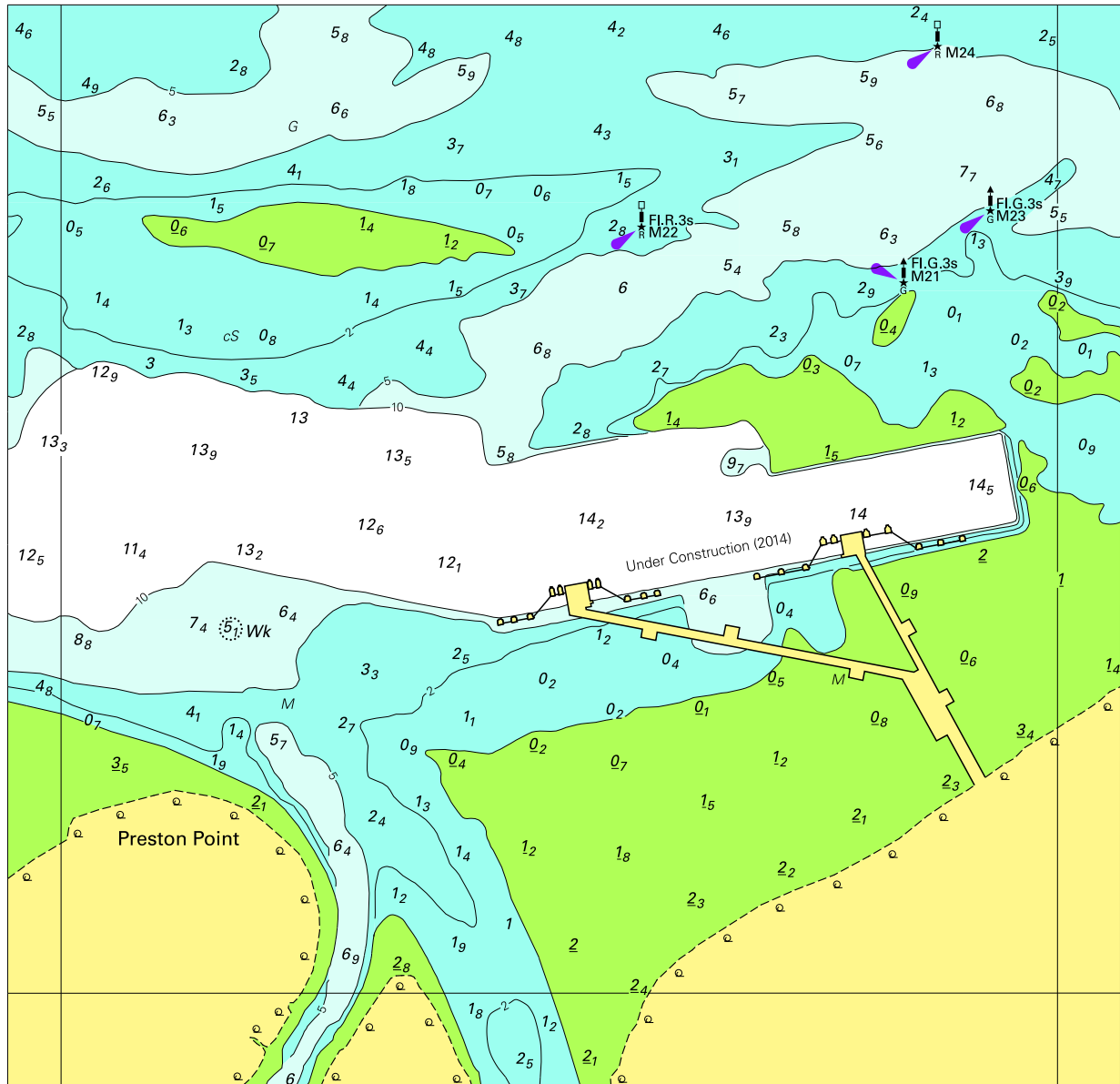


Block for chart Aus 220

© Commonwealth of Australia 2014

(140.7 x 117.0mm)

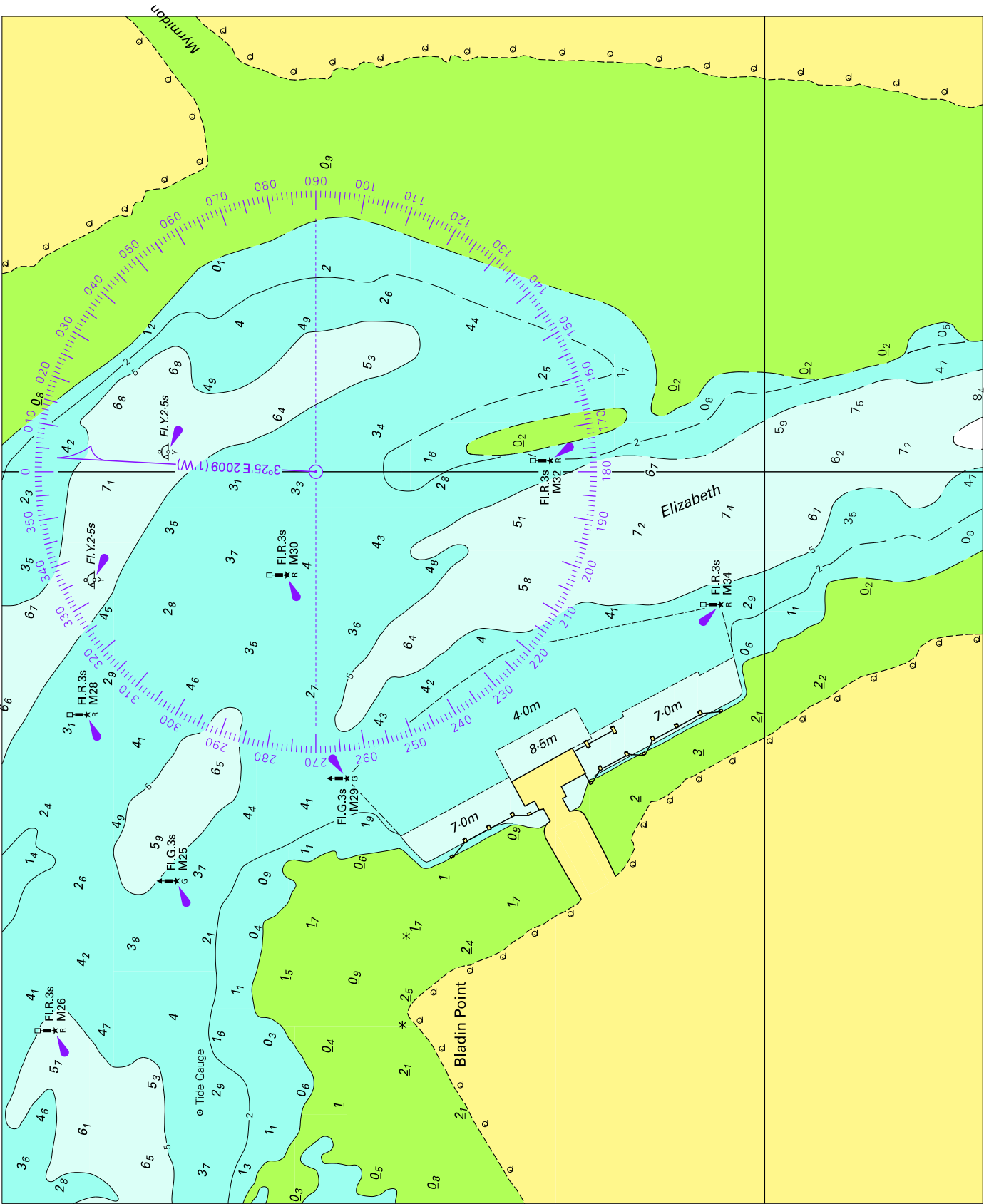
To accompany Australian Notice to Mariners 524/2014



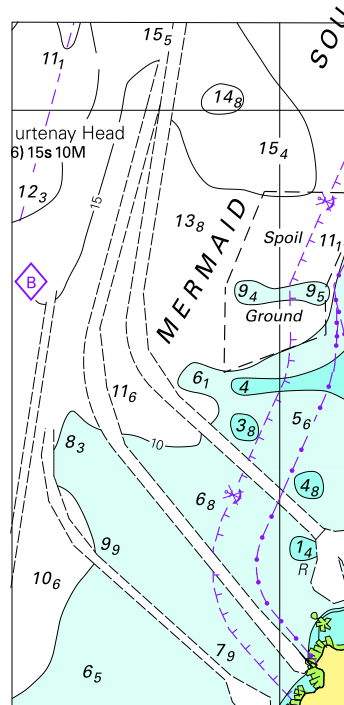
Block A for chart Aus 28

© Commonwealth of Australia 2014

(161.8 x 157.6mm)

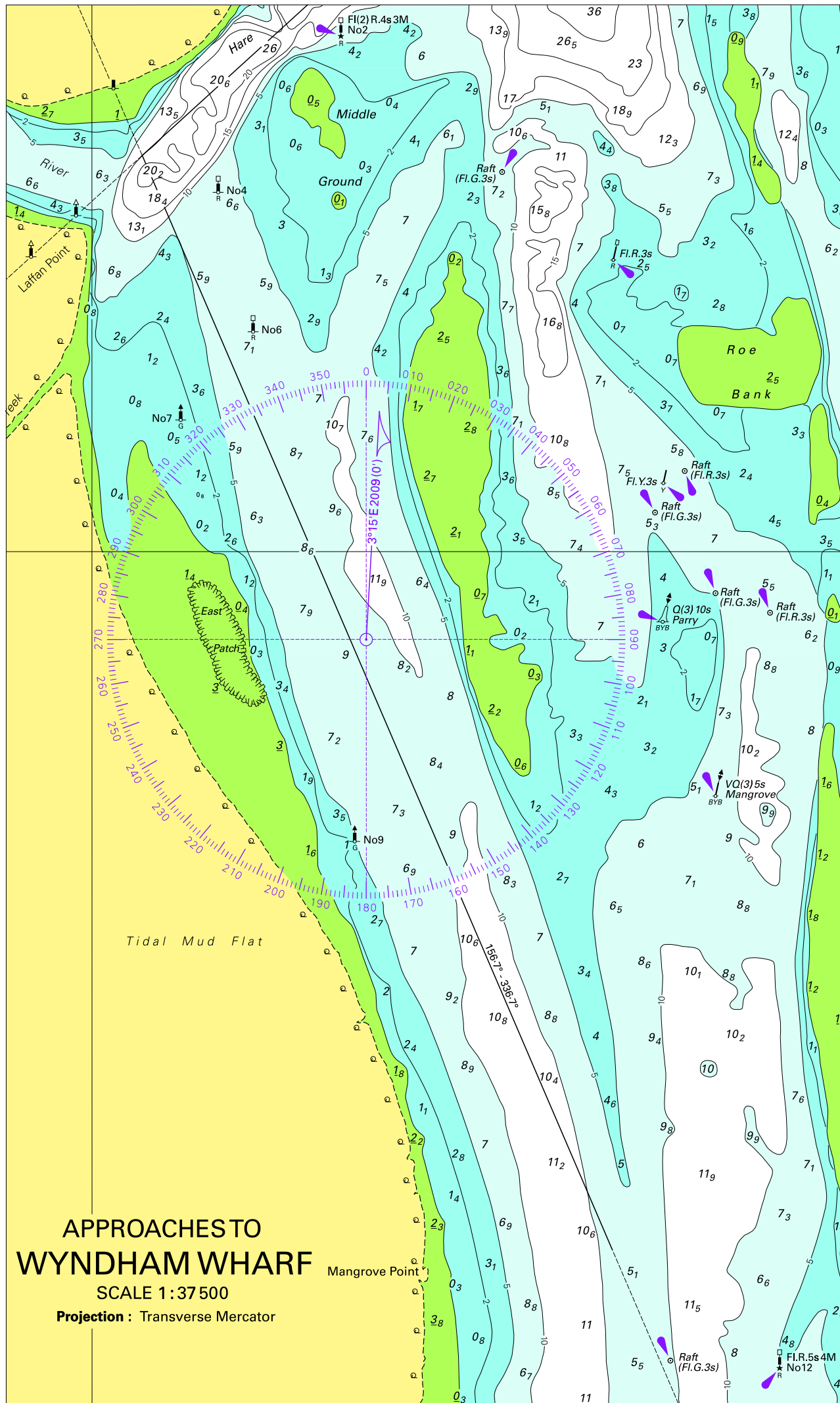


To accompany Australian Notice to Mariners 527/2014



© Commonwealth of Australia 2014
Block for chart Aus 741

(44.1 x 90.1mm)



APPROACHES TO WYNDHAM WHARF

SCALE 1:37 500

Projection : Transverse Mercator