

To accompany Australian Notice to Mariners 439/2014

RESTRICTED AREAS

The following restrictions apply within the vicinity of Port Botany, (33° 58'.1 S, 151° 12'.5 E) and Sydney International Airport, (33° 58'.3 S, 151° 11'.1 E):

Areas 1 & 2: Unauthorised vessels and boats not permitted.

Areas 3 & 6: Entry prohibited to vessels with an air draft of more than 12.2m.

Areas 4 & 5: Entry prohibited to vessels with an air draft of more than 18.3m.

Note for chart Aus 196

To accompany Australian Notice to Mariners 439/2014

RESTRICTED AREAS

The following restrictions apply within the vicinity of Port Botany, (33° 58'.1 S, 151° 12'.5 E) and Sydney International Airport, (33° 58'.3 S, 151° 11'.1 E):

Areas 1 & 2: Unauthorised vessels and boats not permitted.

Areas 3 & 6: Entry prohibited to vessels with an air draft of more than 12.2m.

Areas 4 & 5: Entry prohibited to vessels with an air draft of more than 18.3m.

Note for chart Aus 198

To accompany Australian Notice to Mariners 439/2014

RESTRICTED AREAS

The following restrictions apply within the vicinity of Port Botany, (33° 58'.1 S, 151° 12'.5 E) and Sydney International Airport, (33° 58'.3 S, 151° 11'.1 E):

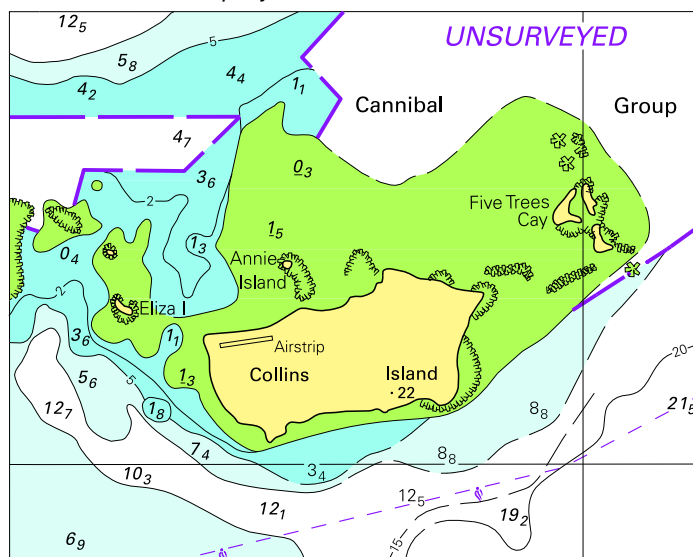
Areas 1 & 2: Unauthorised vessels and boats not permitted.

Areas 3 & 6: Entry prohibited to vessels with an air draft of more than 12.2m.

Areas 4 & 5: Entry prohibited to vessels with an air draft of more than 18.3m.

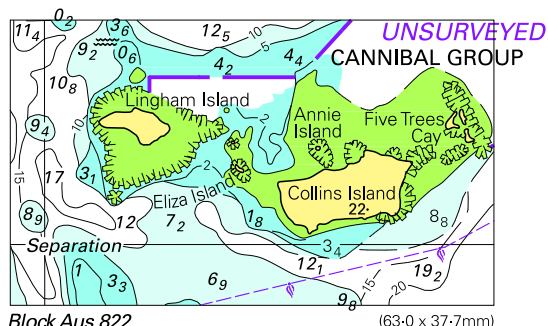
Note for chart Aus 199

To accompany Australian Notice to Mariners 440/2014



Block for Aus 260 © Commonwealth of Australia 2014 (91.7 X 72.7mm)

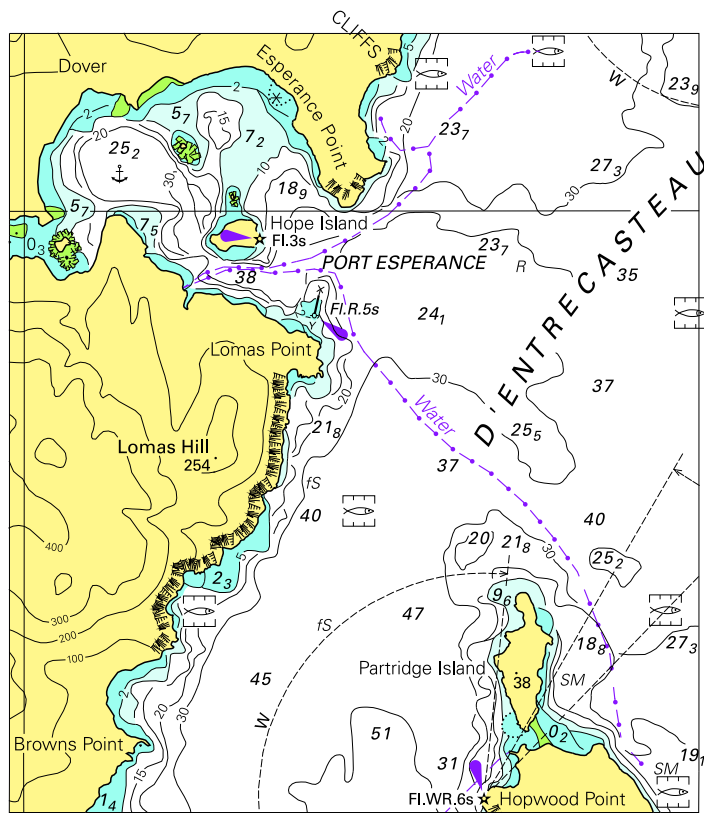
To accompany Australian Notice to Mariners 440/2014



Block Aus 822 (63.0 x 37.7mm)
© Commonwealth of Australia 2014

(120.3 x 168.2mm)

To accompany Australian Notice to Mariners 443/2014



© Commonwealth of Australia 2014

Block for chart Aus 795

(91.2 x 103.0)