

11.11.4 Warnings

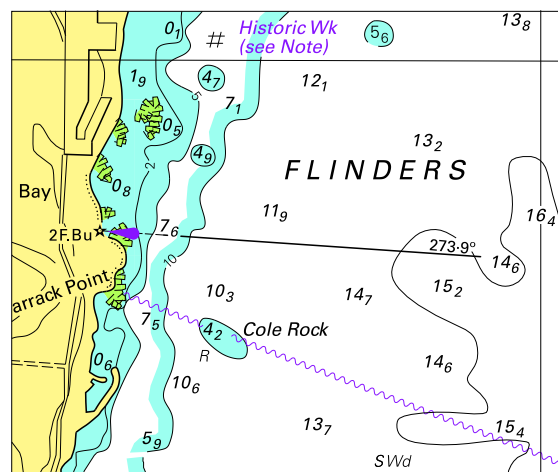
1. A warning will be issued as a Navigational Warning and will:
 - give details of the area
 - state the reason for the warning
 - describe the ADF's involvement.
2. Vessels seeking protection are to send a Passage Intentions Report to the ADF. The Message Format is based upon the IMO Standard Ship Reporting format. Further details can be found in Admiralty List of Radio Signals Volume 6 and Chapter 10.
3. Masters must note that contacting the ADF does not replace the requirement to report to MASTREP as normal.

Page 202

Brisbane, QLD (27° 23'S, 153° 09'E)	
UN/LOCODE: AU BNE	
Charts:	Aus 236, 237, 238
Security Regulated Port:	Yes
Port Authority:	Port of Brisbane Pty Ltd
Website:	www.portbris.com.au
email:	info@portbris.com.au
Telephone:	+61 7 3258 4888
Vessel Traffic Service:	Call Brisbane VTS
Telephone:	+61 7 33051700
email:	vtso.1@msq.qld.gov.au vtso.2@msq.qld.gov.au
Pilotage:	Compulsory
Pilot:	Brisbane Marine Pilots
Telephone:	+61 7 3862 2260
Fax:	+61 7 3862 6499
email:	operations@brisbanepilots.com.au
Ordering:	via agent 48 hours in advance
Pilot Boarding Ground:	26°42.90'S, 153°10.68'E
Communication:	"Brisbane VTS"
Call up, emergencies:	VHF Ch 16
Port Operations:	VHF Ch 12
Small Craft:	VHF Ch 67
Pilots and Tugs:	VHF Ch 6, 8, 9, 10
Water Police and Coast Guard:	VHF 63, 73
Notice of ETA:	48 hours and 24 hours prior to arrival
ETD:	1 Hour
For more information see Port Handbook:	www.portbris.com.au/ ShippingOperations/PortHandbook

Page 210

To accompany Australian Notice to Mariners 116/2014



© Commonwealth of Australia 2014
 Block for chart Aus 116 (73.3 x 61.5mm)

Mag Var 9°15'E 2009 (1'E)

Place	Lat S	Long E	Heights in metres above datum					
			HAT	MHHW	MLHW	MSL	MHLW	MLLW
Beachport	37°30'	140°01'	1.6	1.1	0.9	0.7	0.5	0.3
Kingston SE	36 50	139 51	1.7	1.2	0.9	0.8	0.6	0.3
Robe	37 12	139 31	1.2	1.1	0.8	0.6	0.5	0.2
Victor Harbor	35 34	138 38	1.6	1.2	0.9	0.7	0.5	0.2

The image displays a 4x4 grid of map sections, each showing a different part of a coastline. The sections are labeled with letters B, C, and D, and include geographical names and coordinates. Some sections include a small inset map labeled 'see Plan'.

- Top Row:**
 - Section 1 (Top Left): Shows a coastline with a small bay. Coordinates: 139°45' (top), 37° (right). Label: C (top left), B (center). Inset: 'see Plan'.
 - Section 2 (Top Middle): Shows a coastline with a small bay. Coordinates: 37° (top), 139°45' (right). Label: B (center). Inset: 'see Plan'.
 - Section 3 (Top Right): Shows a coastline with a small bay. Coordinates: 139°45' (top), 37° (right). Label: B (center). Inset: 'see Plan'.
- Second Row:**
 - Section 4 (Second Row Left): Shows a coastline with a small bay. Coordinates: 37° (top), 140° (right). Label: C (top left), B (center). Inset: 'see Plan'.
 - Section 5 (Second Row Middle): Shows a coastline with a small bay. Coordinates: 139°51' (top), 36° (right). Label: C (center). Inset: 'see Plan'.
 - Section 6 (Second Row Right): Shows a coastline with a small bay. Coordinates: 37° (top), 139°45' (right). Label: B (center). Inset: 'see Plan'.
- Third Row:**
 - Section 7 (Third Row Left): Shows a coastline with a small bay. Coordinates: 35° (top), 138°45' (right). Label: C (center). Inset: 'see Plan'.
 - Section 8 (Third Row Middle): Shows a coastline with a small bay. Coordinates: 138° (top), 35° (right). Label: C (center). Inset: 'see Plan'.
 - Section 9 (Third Row Right): Shows a coastline with a small bay. Coordinates: 140° (top), 37° (right). Label: B (center). Inset: 'see Plan'.
- Bottom Row:**
 - Section 10 (Bottom Left): Shows a coastline with a small bay. Coordinates: 138° (top), 35° (right). Label: C (center). Inset: 'see Plan'.
 - Section 11 (Bottom Middle): Shows a coastline with a small bay. Coordinates: 138° (top), 35° (right). Label: C (center). Inset: 'see Plan'.
 - Section 12 (Bottom Right): Shows a coastline with a small bay. Coordinates: 138°42' (top), 35° (right). Label: C (center). Inset: 'see Plan'.

(For details see Australian Seafarers Handbook for Australian Waters, AHP 20)

ZOC	POSITION ACCURACY	DEPTH ACCURACY	SEAFOOR COVERAGE
A1	±5m	=0.50m + 1% d	Significant seafloor features detected
A2	±20m	=1.00m + 2% d	Significant seafloor features detected
B	±50m	=1.00m + 2% d	Uncharted features hazardous to surface navigation are not expected but may exist
C	±500m	=2.00m + 5% d	Depth anomalies may be expected
D	Worse than ZOC C	Worse than ZOC C	Large depth anomalies may be expected
U	Unassessed - The quality of the bathymetric data has yet to be assessed		

© Commonwealth of Australia 2014

[illegible]

© Commonwealth of Australia 2014