

To accompany Australian Notice to Mariners 721/2014

TWO-WAY ROUTE

The Two-Way Route shown on this chart is a ships routing measure that has been adopted by the IMO.

The route keeps ships clear of charted hazards in proximity to its limits and assists in safe and efficient navigation.

In accordance with the International Convention for Safety of Life at Sea, 1974 ships are to maintain a continuous listening watch on VHF channel 16 when practicable. Additionally, ships should note the requirements for reporting to REEFVTS.

The International Regulations for Preventing Collisions at Sea, 1972 apply to all vessels whether navigating within or outside the Two-Way Route. Where safe and practicable, vessels are advised to keep to starboard of the routes centreline.

This IMO-adopted Two-Way Route will enter into force on 1 December 2014 at 0000 hours UTC.

Note for chart Aus 247

To accompany Australian Notice to Mariners 729/2014

MARINE FARMS

Marine farms, which may be floating or fixed structures and their associated moorings should be avoided. The farms are generally marked by buoys or beacons, which may be lit. Their charted positions are approximate.

Note for chart Aus 748

To accompany Australian Notice to Mariners 729/2014

MARINE FARMS

Marine farms, which may be floating or fixed structures and their associated moorings should be avoided. The farms are generally marked by buoys or beacons, which may be lit. Their charted positions are approximate.

Note for chart Aus 747

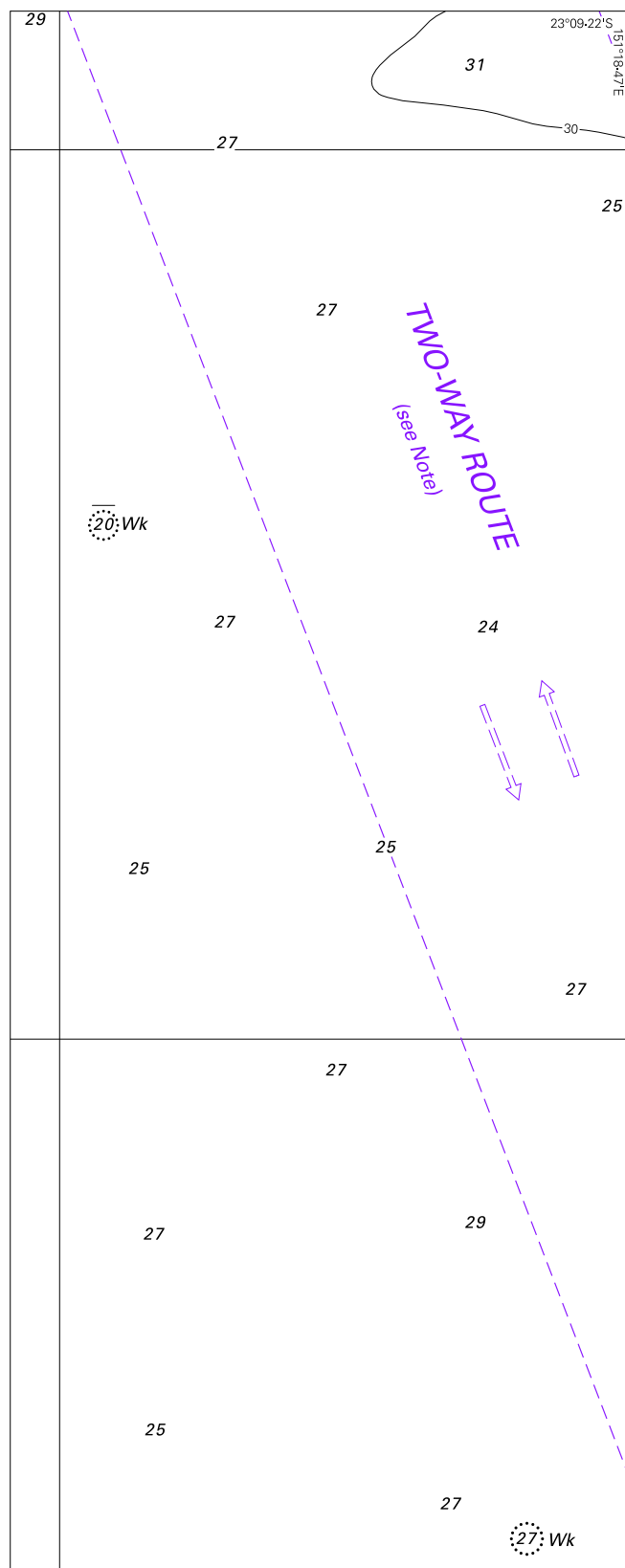
To accompany Australian Notice to Mariners 729/2014

MARINE FARMS

Marine farms, which may be floating or fixed structures and their associated moorings should be avoided. The farms are generally marked by buoys or beacons, which may be lit. Their charted positions are approximate.

Note for chart Aus 749

To accompany Australian Notice to Mariners 721/2014

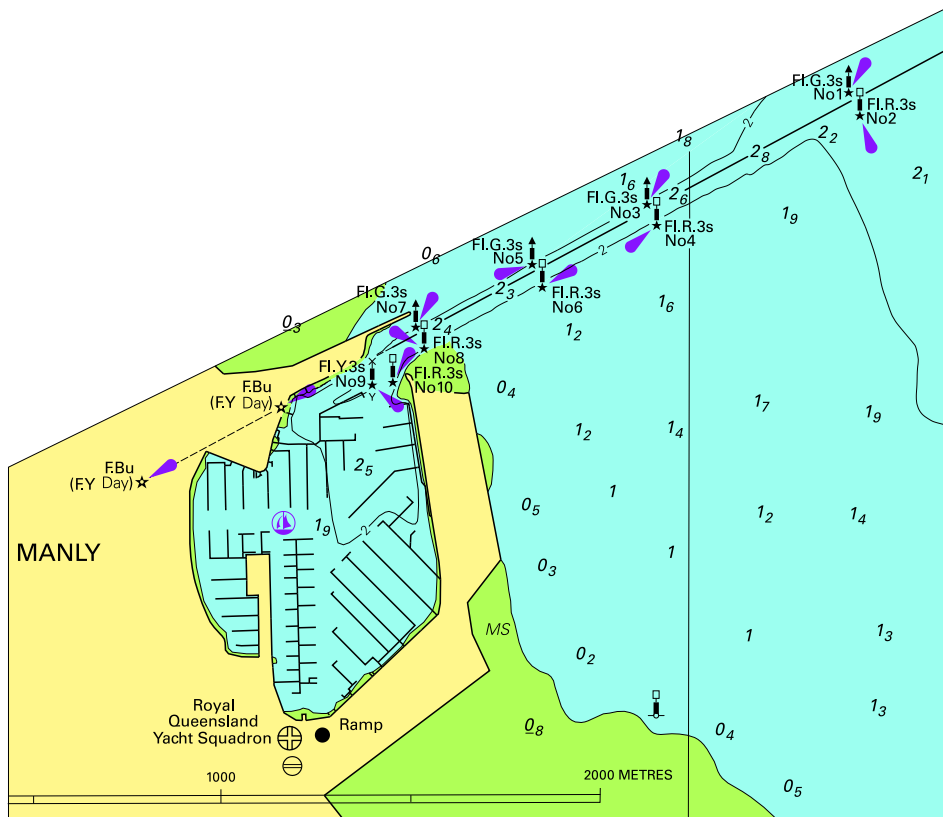


Block for chart Aus 247

(85.7 x 215.9mm)

© Commonwealth of Australia 2014

To accompany Australian Notice to Mariners 722/2014

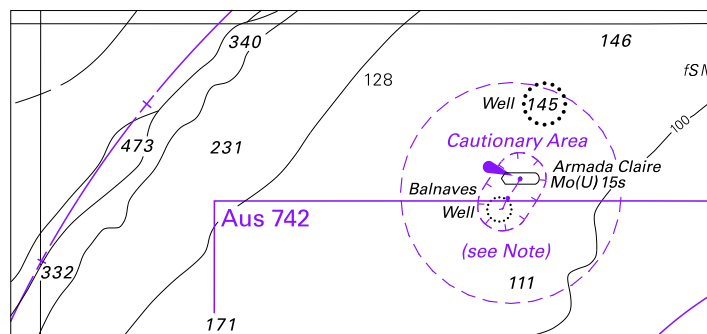


Block for chart Aus 236

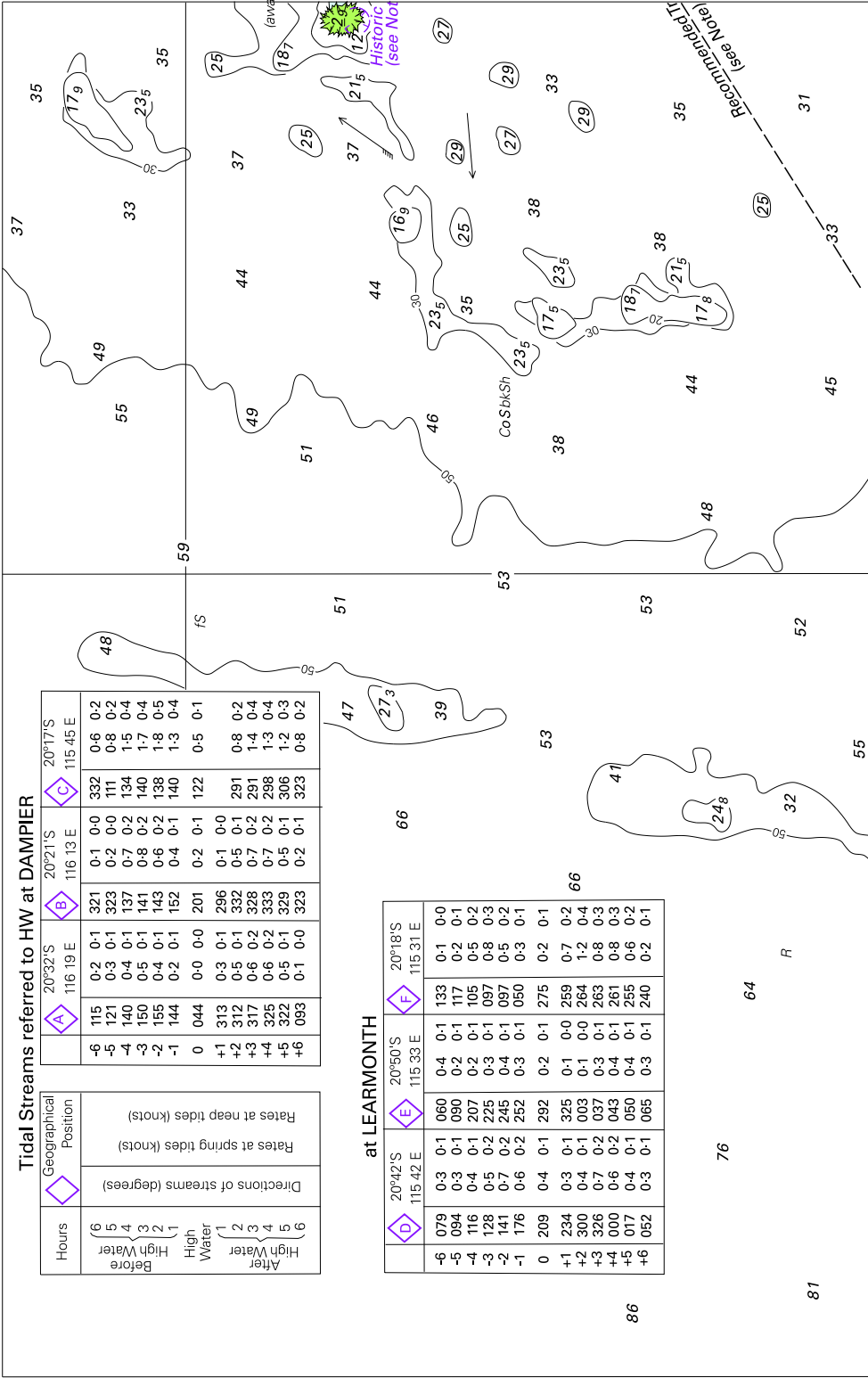
© Commonwealth of Australia 2014

(123.8 x 107.4mm)

To accompany Australian Notice to Mariners 728/2014



© Commonwealth of Australia 2014
Block for chart Aus 328 (93.6 x 43.2mm)



(204-0 x 128-7mm)

© Commonwealth of Australia 2014

Block B for chart Aus 742