

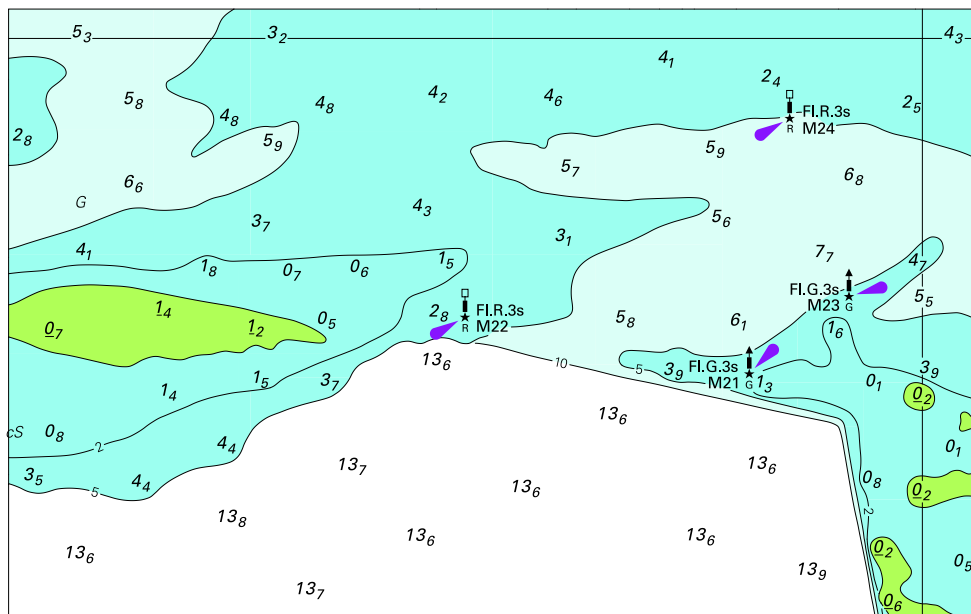
*To accompany Australian Notice to Mariners 686/2014*

RECOMMENDED TRACKS

This track has been surveyed in accordance with the IMO/IHO standards for recommended tracks. The attention of vessels meeting on recommended tracks is drawn to the International Regulations for Preventing Collisions at Sea (1972), particularly Rules 18 and 28 regarding vessels constrained by their draught.

*Note for chart Aus 136*

To accompany Australian Notice to Mariners 677/2014

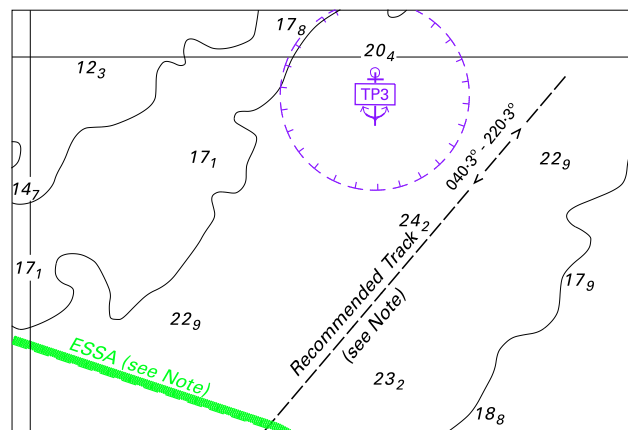


Block for Aus 28

© Commonwealth of Australia 2014

(128.0mm x 80.4mm)

To accompany Australian Notice to Mariners 686/2014

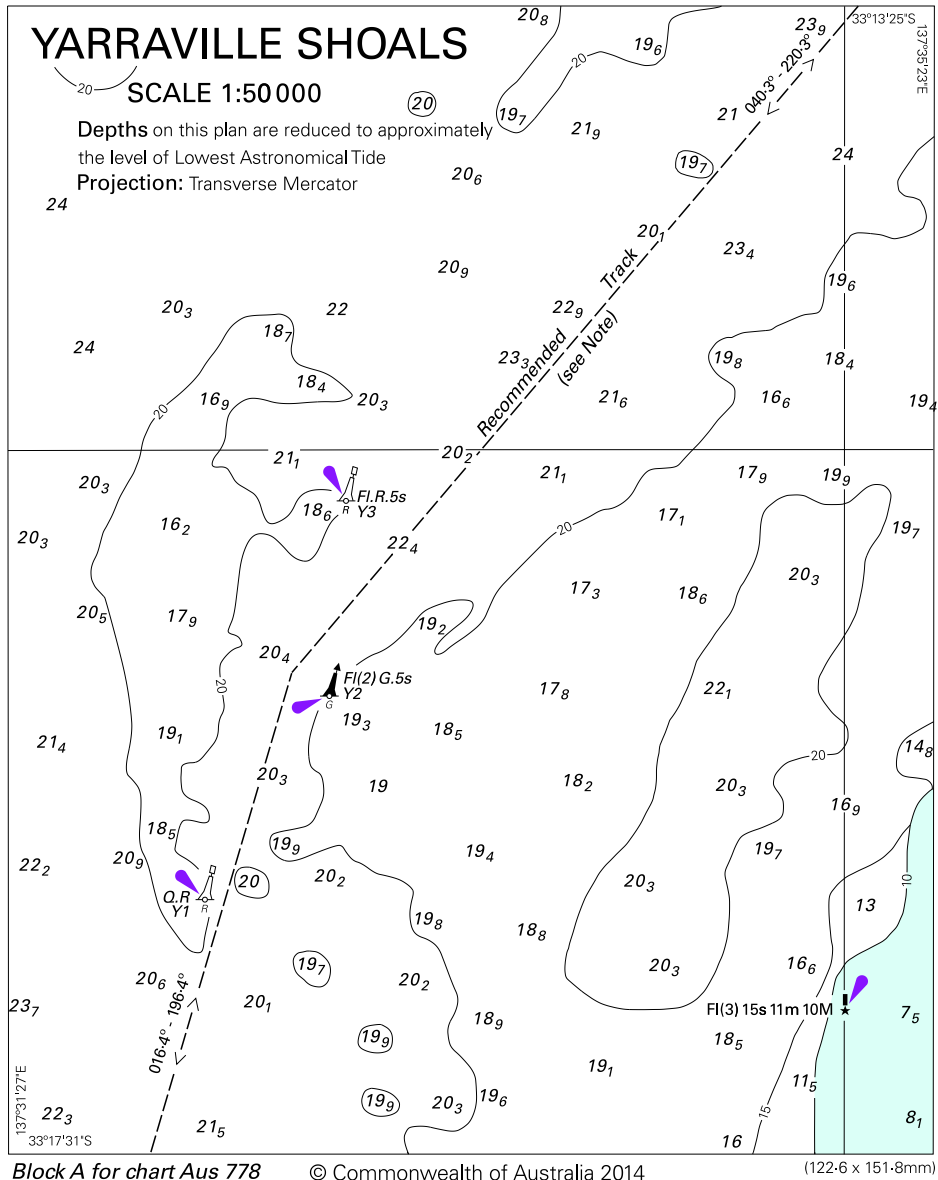


© Commonwealth of Australia 2014

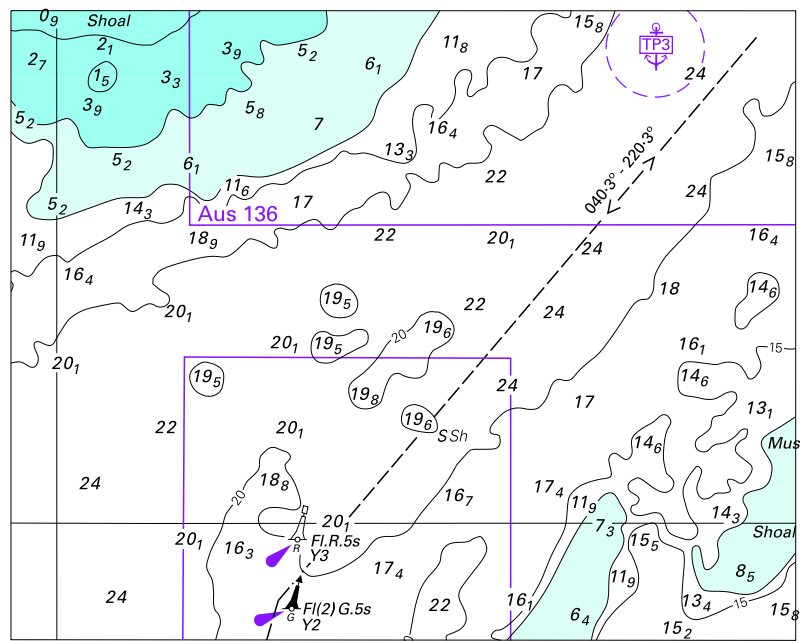
Block for chart Aus 136

(82.9 x 55.8mm)

To accompany Australian Notice to Mariners 686/2014



To accompany Australian Notice to Mariners 686/2014

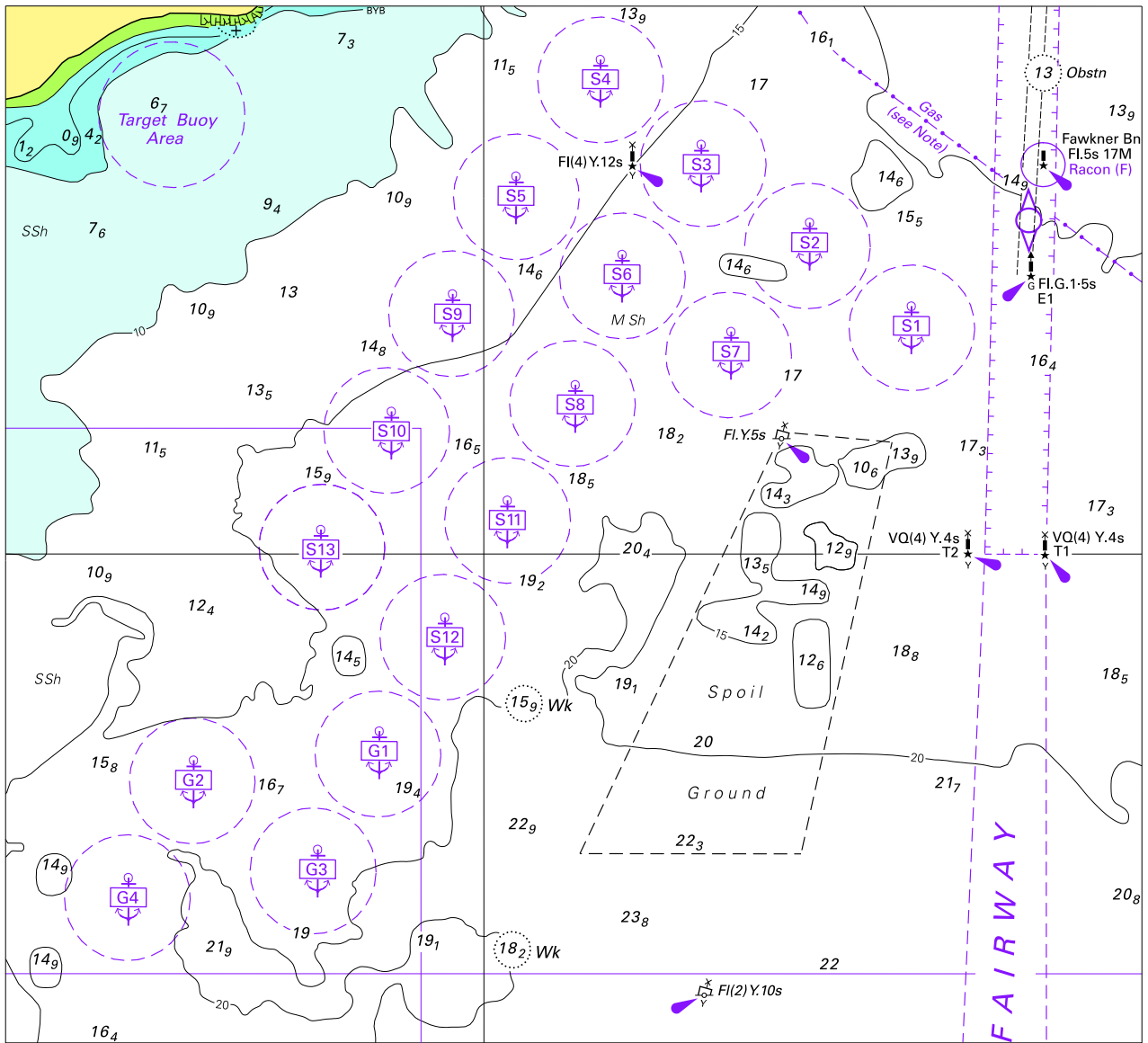


© Commonwealth of Australia 2014

Block B for chart Aus 778

(103.8 x 83.3mm)

To accompany Australian Notice to Mariners 687/2014



Block for Chart Aus 143

© Commonwealth of Australia 2014

(167.2 x 152.5 mm)