

Botany Bay, NSW (34° 00'S, 151° 13'E) UN/LOCODE: AU BTB	
Charts:	Aus 199, 198, 197
Security Regulated Port:	Yes
Port Authority:	Sydney Ports Corporation
Website:	www.sydneyports.com.au
email:	enquiries@sydneyports.com.au
Telephone:	+61 2 9296 4999
Harbour Control call:	Sydney Ports VTS
Telephone:	+61 2 9296 4000
Fax:	+61 2 9296 4812
email:	VTS@sydneyports.com.au
Pilotage:	Compulsory
Pilot	
Telephone:	+61 2 9296 4888
Fax:	+61 2 9296 4744
email:	pilotenquiries@sydneyports.com.au
Ordering:	Through local agent
Pilot Boarding Ground:	34° 01.02'S, 151° 18.88'E
Communication	"Sydney Ports VTS"
Call up, emergencies:	VHF Ch 16
Sydney Ports VTS:	VHF Ch 12
Pilot Boarding:	VHF Ch 06
Tugs:	VHF Ch 08, 10
Notice of ETA:	60 hours
For more information:	www.sydneyports.com.au/corporation/publications

Page 214

Sydney (Port Jackson) , NSW (33° 51'S, 151° 12'E) UN/LOCODE: AU SYD	
Charts:	Aus 197, 200
Security Regulated Port:	Yes
Port Authority:	Sydney Ports Corporation
Website:	www.sydneyports.com.au
email	enquiries@sydneyports.com.au
Telephone:	+61 2 9296 4999
Sydney Ports VTS	
Telephone:	+61 2 9296 4003
Fax:	+61 2 9296 4650
email:	VTS@sydneyports.com.au
Pilotage:	Compulsory >30m LOA
Pilot:	
Telephone:	+61 2 9296 4888
Fax:	+61 2 9296 4744
email:	pilotenquiries@sydneyports.com.au
Ordering:	Through Agent
Pilot Boarding Grounds:	34° 01.02'S, 151° 18.88'E 33° 50.05'S, 151° 21.68'E
Communication	"Sydney Ports VTS"
Call up, emergencies:	VHF Ch 16
VTS:	VHF Ch 13
Pilot Boarding:	VHF Ch 06
Tugs:	VHF Ch 68, 69, 72
Notice of ETA:	60 hours
For more information:	www.sydneyports.com.au/corporation/publications

Page 216

Port Kembla, NSW (34° 28'S, 150° 54'E) UN/LOCODE: AU PKL	
Charts:	Aus 195, 194
Security Regulated Port:	Yes
Port Authority including Harbour Master:	Port Kembla Port Corporation
Website:	www.portkembla.com.au
email:	enquiries@portkembla.com.au
Telephone:	+61 2 4575 0100
Vessel Traffic Service	
Call:	"Port Kembla Harbour"
Telephone:	+61 2 4274 4571 / +61 2 4275 0159
Fax:	+61 2 4274 6147
email:	sigstn@portkembla.com.au
Pilotage:	Compulsory
Pilot Boarding Grounds:	(Inner) 34° 25.15'S, 150° 56.85'E (Outer) 34° 24.23'S, 150° 57.62'E
Communication	"Port Kembla Harbour"
Call up, emergencies:	VHF Ch 16
Port Operations:	VHF 06, 08, 11
Notice of ETA:	48 hours notification required - booking must be confirmed 24 hours in advance
For more information on terminals and landside logistics:	www.nswportskembla.com.au

Page 215

Melbourne, VIC (37° 49'S, 144° 55'E) UN/LOCODE: AU MEL
--

Page 218

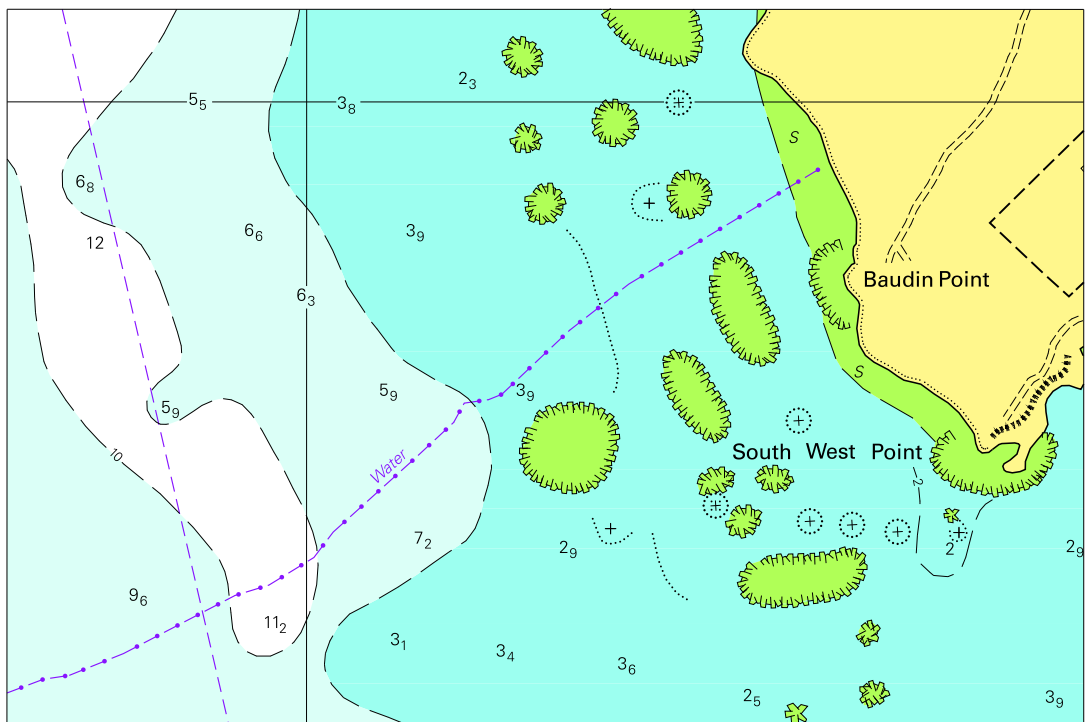
Western Port, VIC (38° 22'S, 145° 13'E) UN/LOCODE: AU WEP

Page 218

Kitan, (Glas Dowr) Timor Sea (10° 37' 32S, 126° 10' 2E) UN/LOCODE: AU KTN	
Chart:	Aus 312
Security Regulated	Yes
Offshore Facility:	
Operator	ENI Australia
Website:	www.eni.it
email:	info@eniaustralia.com.au (Attn: Operations Manager)
Telephone:	+61 8 9320 1111
Pilots:	Intertek Testing Services (Australia) Pty Ltd
email:	sukhi.singh@intertek.com
Telephone:	+61 8 9430 4399
Pilotage:	Compulsory
Pilot Boarding Ground:	From Support Tug at Kitan Terminal
Communication	
Call up, emergencies:	VHF Ch 16
Operator / Pilots:	VHF Ch 71 and UHF Ch 2
Notice of ETA:	72, 48, 24, 12 hours before arrival

Page 232

To accompany Australian Notice to Mariners 567/2014

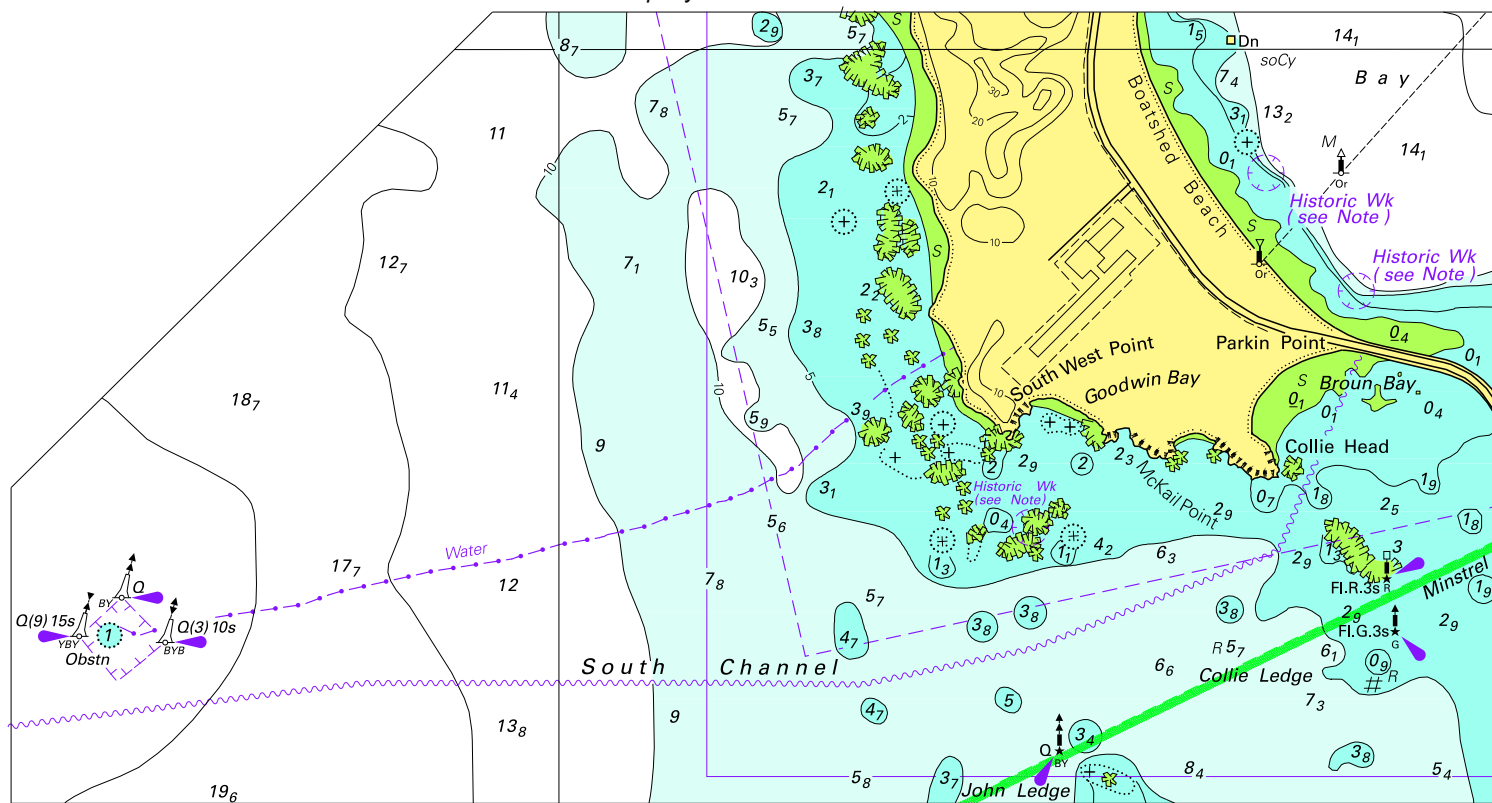


Block for Chart Aus 111

© Commonwealth of Australia 2014

(142.4 x 94.7mm)

To accompany Australian Notice to Mariners 567/2014

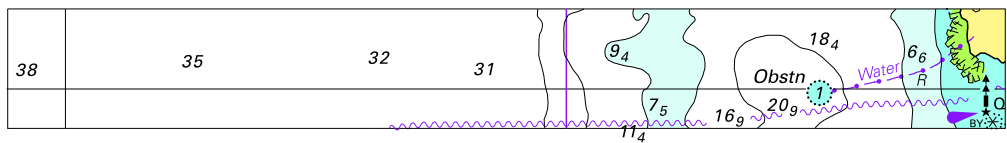


Block for Chart Aus 117

© Commonwealth of Australia 2014

(196.7 x 104.7mm)

To accompany Australian Notice to Mariners 567/2014

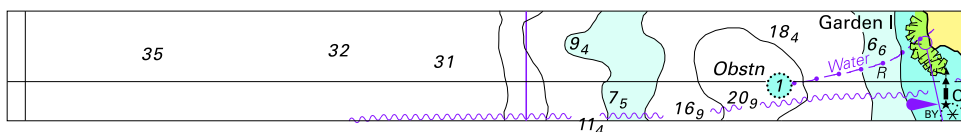


Block for chart Aus 754

© Commonwealth of Australia 2014

(131.9 x 15.8)

To accompany Australian Notice to Mariners 567/2014



Block for chart Aus 755

© Commonwealth of Australia 2014

(131.9 x 15.8)

© Commonwealth of Australia 2014

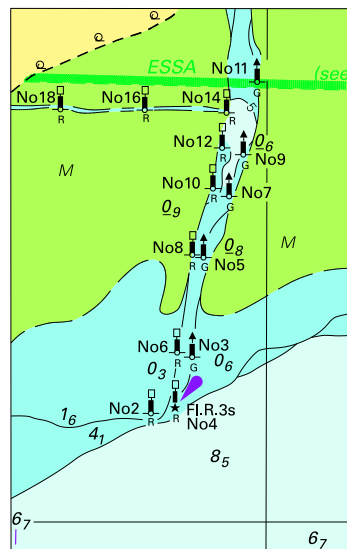
Block A for chart Aus 778

(60.6 x 94.0mm)

Block B for chart Aus 778

(60.3 x 122.3mm)

To accompany Australian Notice to Mariners 573/2014



© Commonwealth of Australia 2014
 Block for chart Aus 151
 (44.6 x 71.9mm)