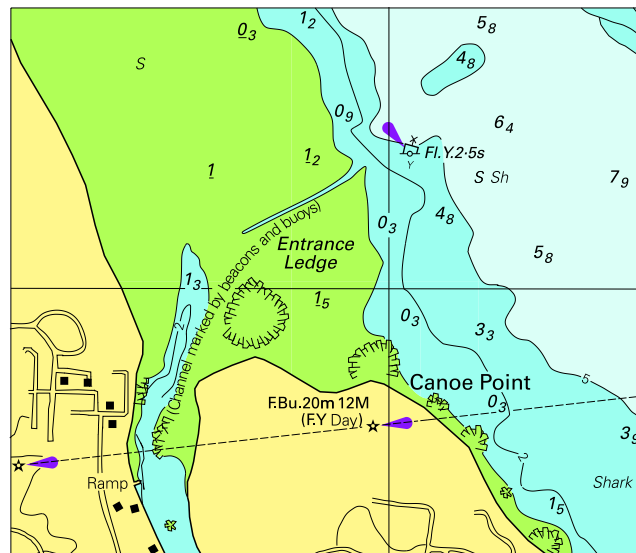
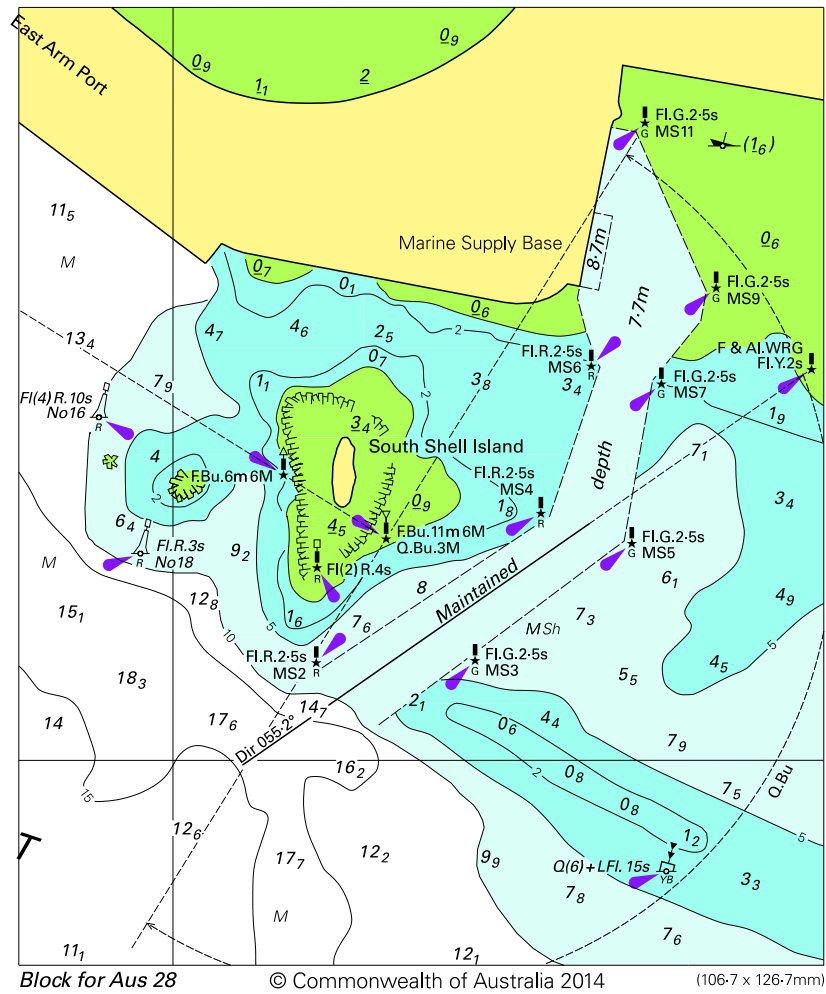


To accompany Australian Notice to Mariners 478/2014

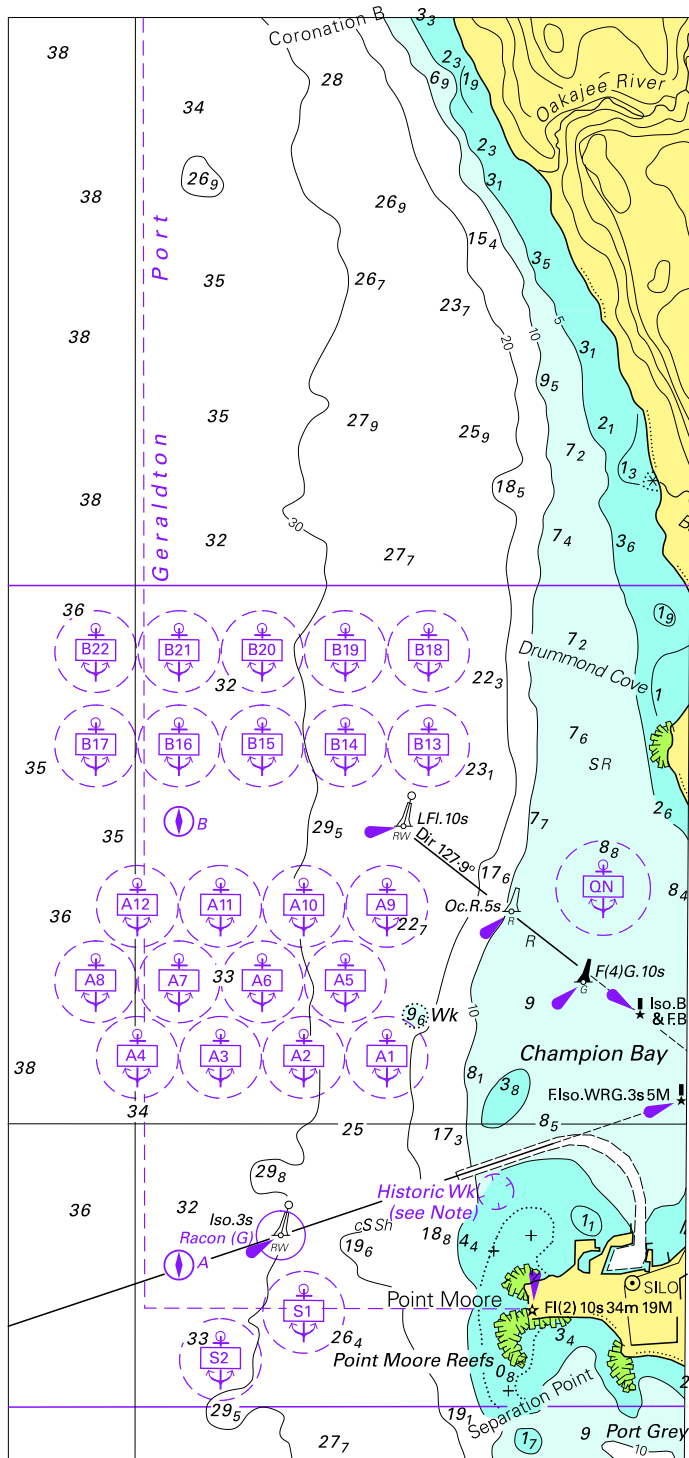


Block for Aus 246 ©Commonwealth of Australia 2014 (72.5 x 83.5mm)

To accompany Australian Notice to Mariners 486/2014



To accompany Australian Notice to Mariners 489/2014

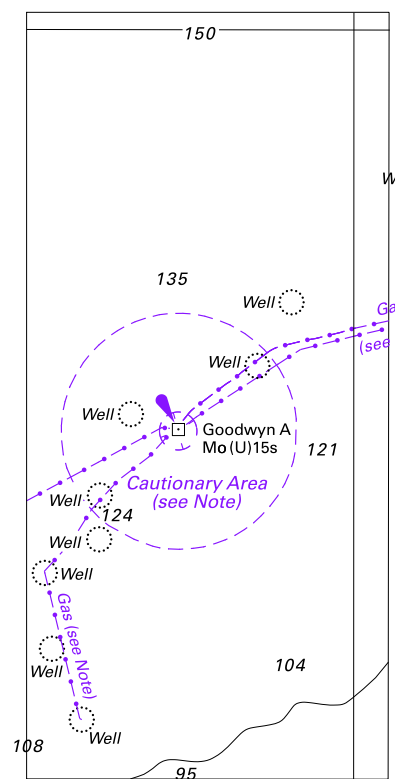


© Commonwealth of Australia 2014

Block for chart Aus 751

(88.8 X 191.1mm)

To accompany Australian Notice to Mariners 491/2014



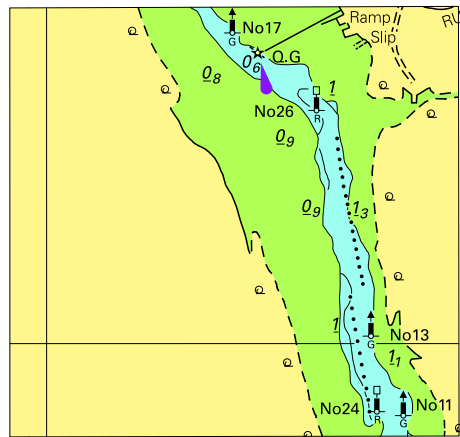
© Commonwealth of Australia 2014
 Block for chart Aus 327 (47.9 x 101.4mm)

The chart depicts the Portland Harbour area, showing the harbour, surrounding streets, and various maritime features. Key locations include the Church Spire, Henty Park, and the Botanic Gardens. The harbour is labeled 'PORTLAND HARBOUR' and 'Henty Harbour'. The chart also shows the 'Main' channel, 'Smelter Berth', 'Patterson Berth', and 'Trawler Wharf'. The chart is oriented with North at the top.

© Commonwealth of Australia 2014

(207.5 x 151.4mm)

To accompany Australian Notice to Mariners 495/2014



© Commonwealth of Australia 2014
 Block for chart Aus152 (58.7 x 56.0mm)