

### *To accompany Australian Notice to Mariners 721/2014*

#### TWO-WAY ROUTE

The Two-Way Route shown on this chart is a ships routing measure that has been adopted by the IMO.

The route keeps ships clear of charted hazards in proximity to its limits and assists in safe and efficient navigation.

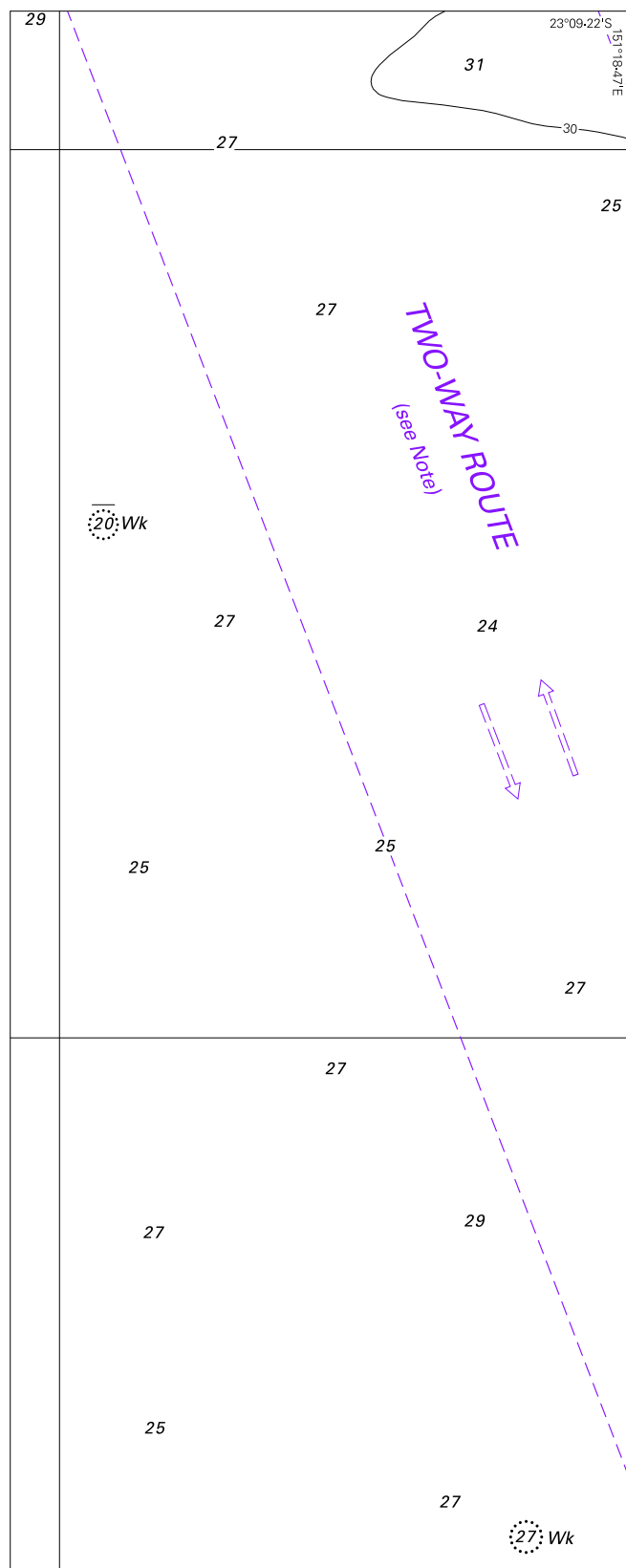
In accordance with the International Convention for Safety of Life at Sea, 1974 ships are to maintain a continuous listening watch on VHF channel 16 when practicable. Additionally, ships should note the requirements for reporting to REEFVTS.

The International Regulations for Preventing Collisions at Sea, 1972 apply to all vessels whether navigating within or outside the Two-Way Route. Where safe and practicable, vessels are advised to keep to starboard of the routes centreline.

This IMO-adopted Two-Way Route will enter into force on 1 December 2014 at 0000 hours UTC.

*Note for chart Aus 247*

To accompany Australian Notice to Mariners 721/2014



Block for chart Aus 247

(85.7 x 215.9mm)

© Commonwealth of Australia 2014