



8 February 2013

Edition 3

Australian Notices to Mariners are the authority for correcting Australian Charts and Publications

# AUSTRALIAN NOTICES TO MARINERS

Notices 123 – 181 

Published fortnightly by the Australian Hydrographic Service

Commodore B.K. BRACE RAN  
*Hydrographer of Australia*

---

## SECTIONS.

- I. **Australian Notices to Mariners, including blocks and notes.**
- II. **Hydrographic Reports.**
- III. **Navigational Warnings.**

## SUPPLEMENTS.

- I. **Tracings**
- II. **Cumulative List of Australian Notices to Mariners.**
- III. **Cumulative List of Temporary and Preliminary Australian Notices to Mariners.**
- IV. **Temporary and Preliminary Notices in force.**
- V. **Amendments to Admiralty List of Lights and Fog Signals (Vol K), Radio Signals (NP 281(2), 282, 283(2), 285, 286(4)) and Sailing Directions (NP 9, 13, 14, 15, 33, 34, 35, 36, 39, 44, 51, 60, 61, 62, 100, 136).**

---

© Commonwealth of Australia 2013

This work is copyright. Apart from any use permitted under the Copyright Act 1968, no part may be reproduced by any process, adapted, communicated or commercially exploited without prior written permission from The Commonwealth represented by the Australian Hydrographic Service.

## IMPORTANT NOTICE

This edition of Notices to Mariners includes all significant information affecting AHS products which the AHS has become aware of since the last edition. All reasonable efforts have been made to ensure the accuracy and completeness of the information, including third party information, on which these updates are based. The AHS regards third parties from which it receives information as reliable, however the AHS cannot verify all such information and errors may therefore exist. The AHS does not accept liability for errors in third party information.

---

## GENERAL INSTRUCTIONS

The substance of these notices should be inserted on the charts affected.

Bearings are referred to the true compass and are reckoned clockwise from North; those relating to lights are given as seen by an observer from seaward. Positions quoted in permanent notices relate to the horizontal datum for the chart(s). When preliminary or temporary notices affect multiple charts, positions will be provided in relation to only one horizontal datum and that datum will be specified. When the multiple charts do not have a common horizontal datum, mariners will be required to adjust the position(s) for those charts not on the specified datum. The range quoted for a light is its nominal range. Depths are with reference to the chart datum of each chart. Heights are above mean high water springs or mean higher high water, as appropriate.

The capital letter (P) or (T) after the number of any notice denotes a preliminary or temporary notice respectively, which are contained separately at the end of the permanent notices. A star (\*) adjacent to the number of a notice indicates that the notice is based on original information.

---

## REPORTING OF DANGERS

Mariners are particularly requested to notify the AUSTRALIAN HYDROGRAPHIC SERVICE, Locked Bag 8801 Wollongong, NSW 2500 (Fax 02-4223 6599, e-mail [Hydro.NTM@defence.gov.au](mailto:Hydro.NTM@defence.gov.au) or, alternatively by filling in and submitting the [Hydrographic Notes](#) forms located on the web site – [www.hydro.gov.au](http://www.hydro.gov.au)), immediately on the discovery of new dangers or suspected dangers to navigation. For changes or defects in aids to navigation notify AusSAR (Fax 02-6230 6868 or email [rccaus@amsa.gov.au](mailto:rccaus@amsa.gov.au)).

---

## AUTHORISED USE

Copies of Australian notices are available free of charge from the Australian Hydrographic Service (AHS) website ([www.hydro.gov.au](http://www.hydro.gov.au)) and through the eNotices (email) service ([www.hydro.gov.au/enotices/enotices.htm](http://www.hydro.gov.au/enotices/enotices.htm)).

Individual Notices may be copied for the purpose of inserting Notice substance on official charts and publications. Paper copies may be printed by chart agents and distributed to customers on a cost recovery basis. Participating chart agents are listed on the AHS website as providing a 'Paper Notices to Mariners' service ([www.hydro.gov.au/prodserv/distributors/distributors.htm](http://www.hydro.gov.au/prodserv/distributors/distributors.htm)). Copies of the notices may not be sold for profit without prior written agreement.

# NUMERICAL INDEX OF NOTICES TO MARINERS

## Edition No 3

Notices	Aus Chart, INT Chart, AHP
123.....	Aus 265, 294
124.....	Amendment to Australian Notice to Mariners No 2
125.....	Aus 208
126.....	Aus 237
127.....	Aus 245
128.....	Aus 262, 263
129.....	Aus 506, 623
130.....	Aus 624
131.....	Aus 628
132.....	Aus 383, 514, 515, 635
133.....	Aus 523, 643
134.....	Aus 545, 546
135.....	Aus 547, 674, 677
136.....	Aus 391, 662
137.....	Aus 54
138.....	Aus 133
139.....	Aus 778
140.....	Aus 776, 777, AX 00776S
141(P).....	Aus 219
142(T).....	Aus 222
143(T).....	Aus 230
144(T).....	Aus 235, 236, 237, 238, 814, 815
145(T).....	Aus 235, 236, 237, 238, 814, 815
146(T).....	Aus 236
147(T).....	Aus 236
148(T).....	Aus 236
149(T).....	Aus 235
150(T).....	Aus 235
151(T).....	Aus 235
152(T).....	Aus 242
153(T).....	Aus 819
154(T).....	Aus 245, 819
155(T).....	Aus 247, 265
156(T).....	Aus 247, 819, 820, AX 00367, 00820S
157(T).....	Aus 249, 250, AX 00249S
158(T).....	Aus 249, AX 00249S
159(T).....	Aus 252, 253
160(T).....	Aus 255
161(T).....	Aus 259
162(T).....	Aus 828
163(T).....	Aus 263, 264
164(T).....	Aus 628
165(T).....	Aus 520, 4620, 4621, INT 620, 621, AX 04620U, 04621U
166(T).....	Aus 388, 4622, INT 622
167(T).....	Aus 4
168(T).....	Aus 26, 28, AX 00026T
169(T).....	Aus 54
170(T).....	Aus 327, 741, 742
171(T).....	Aus 327, 741, 4722, 4723, INT 722, 723, AX 04722U, 04723U
172(T).....	Aus 327, 741, 742
173(T).....	Aus 62, 742, 743
174(T).....	Aus 62, 742
175(T).....	Aus 62, 742
176(T).....	Aus 326, 327, 328, 329, 740, 741, 744, 4722, 4723, 4725, INT 722, 723, 725, AX 04722U, 04723U
177(T).....	Aus 327, 328, 743
178(T).....	Aus 328, 329, 744
179(T).....	Aus 171, 172
180(T).....	Aus 155
181(T).....	Aus 150, 801

## NUMERICAL INDEX OF CHARTS AFFECTED

## Edition No 3

Aus Chart	Notices	Aus Chart	Notices
Aus 4.....	167(T)	Aus 740 .....	176(T)
Aus 26.....	168(T)	Aus 741 .....	170(T), 171(T), 172(T), 176(T)
Aus 28.....	168(T)	Aus 742 .....	170(T), 172(T), 173(T), 174(T), 175(T)
Aus 54.....	137, 169(T)	Aus 743 .....	173(T), 177(T)
Aus 62.....	173(T), 174(T), 175(T)	Aus 744 .....	176(T), 178(T)
Aus 133.....	138	Aus 776 .....	140
Aus 150.....	181(T)	Aus 777 .....	140
Aus 155.....	180(T)	Aus 778 .....	139
Aus 171.....	179(T)	Aus 801 .....	181(T)
Aus 172.....	179(T)	Aus 814 .....	144(T), 145(T)
Aus 208.....	125	Aus 815 .....	144(T), 145(T)
Aus 219.....	141(P)	Aus 819 .....	153(T), 154(T), 156(T)
Aus 222.....	142(T)	Aus 820 .....	156(T)
Aus 230.....	143(T)	Aus 828 .....	162(P)
Aus 235.....	144(T), 145(T), 149(T), 150(T), 151(T)	Aus 4620 .....	165(T)
Aus 236.....	144(T), 145(T), 146(T), 147(T), 148(T)	Aus 4621 .....	165(T)
Aus 237.....	126, 144(T), 145(T)	Aus 4622 .....	166(T)
Aus 238.....	144(T), 145(T)	Aus 4722 .....	171(T), 176(T)
Aus 242.....	152(T)	Aus 4723 .....	171(T), 176(T)
Aus 245.....	127, 154(T)	Aus 4725 .....	176(T)
Aus 247.....	155(T), 156(T)	AX 00026T .....	168(T)
Aus 249.....	157(T), 158(T)	AX 00249S .....	157(T), 158(T)
Aus 250.....	157(T)	AX 00367S .....	156(T)
Aus 252.....	159(T)	AX 00776S .....	140
Aus 253.....	159(T)	AX 00820S .....	156(T)
Aus 255.....	160(T)	AX 04620U .....	165(T)
Aus 259.....	161(T)	AX 04621U .....	165(T)
Aus 262.....	128	AX 04722U .....	171(T), 176(T)
Aus 263.....	128, 163(T)	AX 04723U .....	171(T), 176(T)
Aus 264.....	163(T)		
Aus 265.....	123, 155(T)		
Aus 294.....	123		
Aus 326.....	176(T)		
Aus 327.....	170(T), 171(T), 172(T), 176(T), 177(T)		
Aus 328.....	176(T), 177(T), 178(T)		
Aus 329.....	176(T), 178(T)		
Aus 383.....	132		
Aus 388.....	166(T)		
Aus 391.....	136		
Aus 506.....	129		
Aus 514.....	132		
Aus 515.....	132		
Aus 520.....	165(T)		
Aus 523.....	133		
Aus 545.....	134		
Aus 546.....	134		
Aus 547.....	135		
Aus 623.....	129		
Aus 624.....	130		
Aus 628.....	131, 164(T)		
Aus 635.....	132		
Aus 643.....	133		
Aus 662.....	136		
Aus 674.....	135		
Aus 677.....	135		

**123 AUSTRALIA - Product**

Australian Hydrographic Service (AA650966)

**New Edition to be published shortly**

<i>Chart</i>	<i>Title</i>	<i>Scale</i>	<i>Expected Publication Date</i>
Aus 265	Australia - East Coast - Queensland - Approaches to Port Alma Plan: Port Alma	1:25 000  1:10 000	22 February 2013
Aus 294	Australia - North Coast - Torres Strait - Endeavour Strait Plan: Approaches to Red Island Point	1:75 000  1:20 000	22 February 2013

For further details refer to the AHS website at [www.hydro.gov.au](http://www.hydro.gov.au) for new edition and new chart stock arrival information.

When placing orders with a chart agent, mariners should advise whether their order pertains to the current edition or the new edition.

**124 AUSTRALIA - Product - Amendment to Australian Notice to Mariners No 2**

Australian Hydrographic Service (AA647275, AA650964)

Page 9

*Amend* Cairns Chart Correcting Agency to read:**Cairns Charts & Maps**

Ground Floor, Reef Fleet Terminal  
1 Spence Street  
Cairns 4870

Telephone +61 (0)7 4035 2100  
Mobile 0412 151 545  
Email [info@cairnscharts.com.au](mailto:info@cairnscharts.com.au)  
Website [www.cairnscharts.com.au](http://www.cairnscharts.com.au)

**C, NtM**

Page 11

*Amend* Quin Marine Pty Ltd email to read [quin@quinmarine.com.au](mailto:quin@quinmarine.com.au)**125\* AUSTRALIA - NEW SOUTH WALES - Newcastle - Depths; infrastructure**

Newcastle Port Corporation (AA641724, AA641725, DHDB 2274969)

**Aus 208 [1235/2012]**

Insert	accompanying block A	32° 53'.3 S	151° 46'.0 E
--------	----------------------	-------------	--------------

**Aus 208 (plan, Hunter River (South Arm))**

Insert	accompanying block B	32° 52'.8 S	151° 45'.1 E
--------	----------------------	-------------	--------------

Delete	dashed line, between	32° 53'.10 S	151° 45'.27 E
		32° 52'.97 S	151° 45'.12 E

**126\* AUSTRALIA - QUEENSLAND - Brisbane River - Fisherman Islands - Infrastructure; depths**

Australian Hydrographic Service, Port of Brisbane (DHDB 2287077)

*Note:* the block issued in Edition 2 had missing infrastructure.

**Aus 237 [82/2013]**

Insert	accompanying block	27° 21'.7 S	153° 10'.8 E
--------	--------------------	-------------	--------------

**127\* AUSTRALIA - QUEENSLAND - Gladstone - Light buoys**

Maritime Safety Queensland Notice 34(T)/2013 (AA613996, AA647257)

**Aus 245 [1237/2012]**

Insert	port lateral pillar light buoy, <i>Fl.R.2.5s PI2</i> , with topmark	23° 47'.599 S	151° 12'.369 E
	starboard lateral pillar light buoy, <i>Fl.G.2.5s PI1</i> , with topmark	23° 47'.348 S	151° 12'.308 E
	starboard lateral pillar light buoy, <i>Fl.G.2.5s PI3</i> , with topmark	23° 47'.169 S	151° 12'.083 E
Delete	light buoy	23° 47'.58 S	151° 12'.41 E
	light buoy	23° 47'.33 S	151° 12'.31 E
	light buoy	23° 47'.17 S	151° 12'.11 E

**128\* AUSTRALIA - QUEENSLAND - Cairns - Marlin Marina - Infrastructure**

Ports North (AA614096 - AA614098)

**Aus 262 [29/2012]**

Insert	continuous line, between	16° 55'.065 S	145° 46'.845 E
		16° 55'.065 S	145° 46'.937 E

**Aus 263 [226/2012]**

Insert	accompanying block	16° 55'.1 S	145° 46'.9 E
--------	--------------------	-------------	--------------

**129\* PAPUA NEW GUINEA - Paramana Point to Buruma Point - Nav aids**

Former Notice - 1275(P)/2012 is cancelled

National Maritime Safety Authority PNG (AA642584, AA642585, AA647135, AA647139, AA647140)

**Aus 506 [320/2012]**

Insert	light beacon, <i>Fl.R.</i> 3s, with port lateral topmark	10° 09'.84 S	148° 00'.33 E
	light beacon, <i>Fl.G.</i> 2.5s, with starboard lateral topmark	10° 10'.95 S	148° 08'.30 E
	light beacon, <i>Fl.R.</i> 4s, with port lateral topmark	10° 08'.15 S	148° 08'.87 E
	light beacon, <i>Fl.G.</i> 2s, with starboard lateral topmark	10° 08'.44 S	148° 11'.05 E
	light beacon, <i>Q.G.</i> , with starboard lateral topmark	10° 11'.13 S	148° 11'.79 E
	light beacon, <i>Fl.R.</i> 3s, with port lateral topmark	10° 11'.20 S	148° 15'.09 E
	light beacon, <i>Fl.G.</i> 2s, with starboard lateral topmark	10° 11'.05 S	148° 17'.72 E
	light beacon, <i>Q.G.</i> , with starboard lateral topmark	10° 13'.21 S	148° 20'.44 E
	light beacon, <i>Fl.R.</i> 2.5s, with port lateral topmark	10° 13'.55 S	148° 37'.48 E
	light beacon, <i>Fl.G.</i> 3s, with starboard lateral topmark	10° 14'.40 S	148° 39'.86 E
	light beacon, <i>Fl.G.</i> 4s, with starboard lateral topmark	10° 15'.22 S	148° 43'.74 E
	light beacon, <i>Fl.G.</i> 6s, with starboard lateral topmark	10° 17'.55 S	148° 41'.88 E
Substitute	light beacon, <i>Fl.R.</i> 1.5s, with port lateral topmark for beacon	10° 10'.7 S	148° 00'.0 E
	light beacon, <i>Fl.G.</i> 6s, with starboard lateral topmark for beacon	10° 09'.6 S	148° 00'.9 E
	light beacon, <i>Fl.G.</i> 5s, with starboard lateral topmark for beacon	10° 11'.7 S	148° 16'.9 E
	light beacon, <i>Q.R.</i> , with port lateral topmark for beacon	10° 14'.3 S	148° 40'.3 E
	light beacon, <i>Fl.</i> 6s, without topmark for beacon	10° 14'.2 S	148° 41'.8 E
	light beacon, <i>Fl.G.</i> 2s, with starboard lateral topmark for beacon	10° 15'.7 S	148° 42'.3 E
	light beacon, <i>Fl(5)G.</i> 20s, with starboard lateral topmark for beacon	10° 14'.6 S	148° 44'.3 E
Delete	beacon	10° 09'.8 S	148° 00'.3 E
	depth, 1 <sub>3</sub> m	10° 10'.9 S	148° 08'.3 E
	beacon	10° 08'.4 S	148° 11'.0 E
	beacon	10° 12'.0 S	148° 17'.0 E
	depth, 9 <sub>9</sub> m	10° 10'.8 S	148° 17'.7 E
	beacon	10° 11'.1 S	148° 18'.4 E
	beacon	10° 13'.1 S	148° 20'.5 E
	beacon	10° 13'.6 S	148° 37'.6 E
	beacon	10° 14'.4 S	148° 43'.0 E
	beacon	10° 15'.1 S	148° 43'.6 E
	beacon	10° 17'.5 S	148° 41'.9 E
	beacon	10° 14'.0 S	148° 44'.3 E
	beacon	10° 14'.2 S	148° 44'.2 E
	beacon	10° 14'.9 S	148° 45'.3 E
	beacon	10° 14'.3 S	148° 45'.3 E
	beacon	10° 15'.1 S	148° 47'.6 E

**129\* PAPUA NEW GUINEA - Paramana Point to Buruma Point – Nav aids (continued)****Aus 623 [320/2012]**

Insert	light beacon, <i>Fl.R.3s</i> , with port lateral topmark	10° 09'.84 S	148° 00'.33 E
	light beacon, <i>Fl.G.2·5s</i> , with starboard lateral topmark	10° 10'.95 S	148° 08'.30 E
	light beacon, <i>Fl.R.4s</i> , with port lateral topmark	10° 08'.15 S	148° 08'.87 E
	light beacon, <i>Fl.G.2s</i> , with starboard lateral topmark	10° 08'.44 S	148° 11'.05 E
	light beacon, <i>Q.G</i> , with starboard lateral topmark	10° 11'.13 S	148° 11'.79 E
	light beacon, <i>Fl.R.3s</i> , with port lateral topmark	10° 11'.20 S	148° 15'.09 E
	light beacon, <i>Fl.G.5s</i> , with starboard lateral topmark	10° 11'.78 S	148° 16'.89 E
	light beacon, <i>Fl.G.2s</i> , with starboard lateral topmark	10° 11'.05 S	148° 17'.72 E
	light beacon, <i>Q.G</i> , with starboard lateral topmark	10° 13'.21 S	148° 20'.44 E
Substitute	light beacon, <i>Fl.R.1·5s</i> , with port lateral topmark for beacon	10° 10'.7 S	148° 00'.0 E
	beacon with triangular topmark apex up for beacon	10° 10'.37 S	148° 00'.21 E
	light beacon, <i>Fl.G.6s</i> , with starboard lateral topmark for beacon	10° 09'.6 S	148° 00'.9 E
Delete	beacon	10° 10'.0 S	148° 00'.3 E
	beacon	10° 09'.9 S	148° 00'.4 E
	beacon	10° 09'.8 S	148° 00'.3 E
	depth, 1 <sub>3</sub> m	10° 10'.9 S	148° 08'.3 E
	beacon	10° 08'.4 S	148° 11'.0 E
	depth, 18 <sub>4</sub> m	10° 11'.1 S	148° 11'.7 E
	beacon	10° 11'.8 S	148° 16'.9 E
	beacon	10° 12'.0 S	148° 17'.0 E
	beacon	10° 11'.1 S	148° 18'.4 E
	beacon	10° 13'.1 S	148° 20'.5 E

**130\* PAPUA NEW GUINEA - Alotau - Toulie Huhuna Bay - Nav aids***Former Notice - 1277(P)/2012 is cancelled*

National Maritime Safety Authority PNG (AA642584, AA642585, AA647135, AA647139, AA647140)

**Aus 624 (plan, Alotau) [83/2013]**

Substitute	light beacon, <i>Q.G</i> , with starboard lateral topmark for beacon	10° 18'.57 S	150° 27'.24 E
	light beacon, <i>Q.R</i> , with port lateral topmark for beacon	10° 18'.57 S	150° 27'.21 E

**131\* PAPUA NEW GUINEA - Nuakata Passage - Oreore Channel - Light beacons***Former Notice - 1278(P)/2012 is cancelled*

National Maritime Safety Authority PNG (AA642584, AA642585, AA647135, AA647139, AA647140)

**Aus 628 [321/2012]**

Insert	light beacon, <i>Q.R</i> , with port lateral topmark	10° 13'.138 S	150° 52'.665 E
Substitute	light beacon, <i>Q.R</i> , with port lateral topmark for beacon	10° 13'.686 S	150° 52'.774 E



**132\* PAPUA NEW GUINEA - Ginada Island to Kwaiapan Bay - Nav aids***Former Notice - 1279(P)/2012 is cancelled*

National Maritime Safety Authority PNG (AA642584, AA642585, AA647135, AA647139, AA647140)

**Aus 383 [191/2011]**

Insert	light beacon, <i>Iso.G.5s</i> , with starboard lateral topmark	9° 13'.84 S	152° 25'.67 E
Substitute	light beacon, <i>Fl.G.1-5s</i> , with starboard lateral topmark for beacon	9° 09'.7 S	152° 35'.2 E
Delete	wreck	9° 13'.9 S	152° 25'.7 E
	beacon	9° 13'.9 S	152° 26'.4 E

**Aus 514 [248/2011]**

Insert	light beacon, <i>Iso.G.5s</i> , with starboard lateral topmark	9° 13'.84 S	152° 25'.67 E
	light beacon, <i>Fl.G.1-5s</i> , with starboard lateral topmark	9° 09'.69 S	152° 35'.21 E
Delete	wreck	9° 13'.9 S	152° 25'.7 E
	beacon	9° 13'.9 S	152° 26'.4 E
	beacon	9° 09'.7 S	152° 35'.1 E

**Aus 515 [293/2011]**

Insert	light beacon, <i>Iso.G.5s</i> , with starboard lateral topmark	9° 13'.84 S	152° 25'.67 E
	light beacon, <i>Fl.G.1-5s</i> , with starboard lateral topmark	9° 09'.69 S	152° 35'.21 E
Delete	wreck	9° 13'.9 S	152° 25'.7 E
	beacon	9° 13'.9 S	152° 26'.4 E
	beacon	9° 09'.7 S	152° 35'.1 E

**Aus 635 [NC 25/2/2011]**

Insert	light beacon, <i>Iso.G.5s 4M</i> , with starboard lateral topmark	9° 13'.84 S	152° 25'.67 E
	light beacon, <i>Fl.G.1-5s</i> , with starboard lateral topmark	9° 09'.69 S	152° 35'.21 E
	light beacon, <i>Fl.R.4s</i> , with port lateral topmark	9° 07'.30 S	152° 38'.78 E
	light beacon, <i>Fl.G.2s</i> , with starboard lateral topmark	9° 07'.32 S	152° 39'.09 E
	light beacon, <i>Fl.R.2s</i> , with port lateral topmark	9° 07'.21 S	152° 39'.09 E
	light beacon, <i>Fl.R.3s</i> , with port lateral topmark	9° 06'.72 S	152° 39'.63 E
Delete	depth, 5 <sub>3</sub> m	9° 13'.8 S	152° 25'.7 E
	beacon	9° 13'.9 S	152° 26'.4 E
	beacon	9° 09'.7 S	152° 35'.1 E
	beacon	9° 07'.3 S	152° 38'.8 E
	beacon	9° 07'.3 S	152° 39'.1 E
	beacon	9° 07'.2 S	152° 39'.1 E
	beacon	9° 06'.8 S	152° 39'.6 E

**Aus 635 (plan, Kwaiapan Bay)**

Insert	light beacon, <i>Fl.R.3s</i> , with port lateral topmark	9° 06'.723 S	152° 39'.626 E
	light beacon, <i>Q.R.</i> , with port lateral topmark	9° 06'.374 S	152° 39'.900 E
	light beacon, <i>Fl.G.1-5s</i> , with starboard lateral topmark	9° 06'.553 S	152° 39'.863 E
	light beacon, <i>Q.G.</i> , with starboard lateral topmark	9° 06'.477 S	152° 39'.954 E
Delete	beacon	9° 06'.77 S	152° 39'.60 E
	beacon	9° 06'.48 S	152° 39'.94 E
	beacon	9° 06'.39 S	152° 39'.91 E
	beacon	9° 06'.58 S	152° 39'.86 E

**133\* PAPUA NEW GUINEA - Huon Gulf - Salamaua Harbour to Lae - Light beacons***Former Notice - 1280(P)/2012 is cancelled*

National Maritime Safety Authority PNG (AA642584, AA642585, AA647135, AA647139, AA647140)

**Aus 523 [322/2012]**

Insert	light beacon, <i>Fl.4s</i> , without topmark	7° 02'.08 S	147° 03'.05 E
	light beacon, <i>Fl.R.4s</i> , with port lateral topmark	6° 46'.02 S	146° 58'.34 E

**Aus 643 [322/2012]**

Insert	light beacon, <i>Fl.4s</i> , without topmark	7° 02'.083 S	147° 03'.050 E
	light beacon, <i>Fl.R.4s</i> , with port lateral topmark	6° 46'.02 S	146° 58'.34 E

Delete	depth, 1 <sub>8</sub> m	6° 46'.0 S	146° 58'.3 E
	beacon	7° 02'.08 S	147° 03'.07 E

**134\* PAPUA NEW GUINEA - Urara Island to Rarende Angala Reef - Nav aids***Former Notice - 1281(P)/2012 is cancelled*

National Maritime Safety Authority PNG (AA642584, AA642585, AA647135, AA647139, AA647140)

**Aus 545 [228/2012]**

Insert	light beacon, <i>Fl.R.5s 4M</i> , with port lateral topmark	4° 13'.33 S	151° 27'.63 E
Substitute	light beacon, <i>Fl.15s 4M</i> , without topmark for beacon	4° 11'.5 S	151° 56'.4 E
	light beacon, <i>Fl.G.2s</i> , with starboard lateral topmark for beacon	4° 11'.7 S	151° 44'.9 E
	light beacon, <i>Fl.R.2s</i> , with port lateral topmark for beacon	4° 11'.0 S	151° 43'.3 E
	light beacon, <i>Fl.R.4s</i> , with port lateral topmark for beacon	4° 10'.8 S	151° 40'.5 E
	light beacon, <i>Fl.G.4s</i> , with starboard lateral topmark for beacon	4° 10'.5 S	151° 36'.9 E
Delete	beacon	4° 13'.4 S	151° 27'.7 E

**Aus 546 [140/2011]**

Insert	light beacon, <i>Fl.R.5s 4M</i> , with port lateral topmark	4° 13'.33 S	151° 27'.63 E
Substitute	light beacon, <i>Fl.R.4s</i> , with port lateral topmark for beacon	4° 10'.8 S	151° 40'.5 E
	light beacon, <i>Fl.G.4s</i> , with starboard lateral topmark for beacon	4° 10'.5 S	151° 36'.9 E
Delete	beacon	4° 13'.4 S	151° 27'.7 E

**135\* PAPUA NEW GUINEA - Grabo Reef to Gigo Point - Nav aids**

Former Notice - 1282(P)/2012 is cancelled

National Maritime Safety Authority PNG (AA642584, AA642585, AA647135, AA647139, AA647140)

**Aus 547 [1123/2011]**

Amend	elevation to 7m	5° 28'.7 S	150° 12'.7 E
-------	-----------------	------------	--------------

**Aus 674 [NC 27/1/2012]**

Insert	light beacon, <i>Fl.R.6s No14</i> , with port lateral topmark	5° 31'.460 S	150° 10'.057 E
	light beacon, <i>Fl.R.1.5s No12</i> , with port lateral topmark	5° 31'.380 S	150° 09'.783 E
	light beacon, <i>Fl.4s No13</i> , without topmark	5° 31'.546 S	150° 09'.420 E
	light beacon, <i>Fl.G.1.5s No11</i> , with starboard lateral topmark	5° 31'.329 S	150° 09'.376 E
	light beacon, <i>Fl.G.4s</i> , with starboard lateral topmark	5° 32'.713 S	150° 08'.932 E
	light beacon, <i>Fl.R.3s</i> , with port lateral topmark	5° 32'.684 S	150° 09'.002 E
	light beacon, <i>Fl.G.2s</i> , with starboard lateral topmark	5° 32'.45 S	150° 08'.78 E
	light beacon, <i>Fl.R.6s</i> , with port lateral topmark	5° 32'.122 S	150° 08'.349 E
	light beacon, <i>Q.G.</i> , with starboard lateral topmark	5° 32'.064 S	150° 08'.286 E
	light beacon, <i>Fl.G.3s</i> , with starboard lateral topmark	5° 32'.128 S	150° 08'.128 E
Amend	elevation to 7m	5° 28'.70 S	150° 12'.65 E
Delete	depth, 5m	5° 31'.55 S	150° 09'.41 E
	depth, 0 <sub>7</sub> m	5° 31'.33 S	150° 09'.39 E
	depth, 1 <sub>6</sub> m	5° 32'.09 S	150° 08'.15 E
	beacon	5° 32'.09 S	150° 08'.29 E
	beacon	5° 32'.00 S	150° 08'.27 E

**Aus 677 (plan, Kimbe) [47/2009]**

Insert	light beacon, <i>Fl.G.4s No9</i> , with starboard lateral topmark	5° 32'.713 S	150° 08'.932 E
	light beacon, <i>Fl.R.3s No10</i> , with port lateral topmark	5° 32'.684 S	150° 09'.002 E
	light beacon, <i>Fl.R.6s</i> , with port lateral topmark	5° 32'.122 S	150° 08'.349 E
	light beacon, <i>Q.G.</i> , with starboard lateral topmark	5° 32'.064 S	150° 08'.286 E
Substitute	light beacon, <i>Fl.G.2s No15</i> , with starboard lateral topmark for beacon	5° 32'.45 S	150° 08'.78 E
Delete	beacon	5° 32'.72 S	150° 08'.92 E
	depth, 18 <sub>2</sub> m	5° 32'.70 S	150° 08'.93 E
	beacon	5° 32'.69 S	150° 09'.01 E
	depth, 8 <sub>4</sub> m	5° 32'.69 S	150° 09'.00 E
	beacon	5° 32'.17 S	150° 08'.26 E
	beacon	5° 32'.10 S	150° 08'.29 E
	beacon	5° 32'.01 S	150° 08'.27 E

**136\* PAPUA NEW GUINEA - Hyane Harbour to Lorengau Bay - Nav aids**

Former Notice - 1284(P)/2012 is cancelled

National Maritime Safety Authority PNG (AA642584, AA642585, AA647135, AA647139, AA647140)

**Aus 391 [1302/2011]**

Amend	light to Q.7m 10M	2° 02'.7 S	147° 25'.2 E
-------	-------------------	------------	--------------

**Aus 662 [776/2008]**

Insert	light beacon, <i>Fl.R.4s</i> , with port lateral topmark	2° 00'.933 S	147° 16'.778 E
	light beacon, <i>Q.R.</i> , with port lateral topmark	2° 01'.191 S	147° 16'.261 E
	light beacon, <i>Fl.G.1.5s</i> , with starboard lateral topmark	2° 01'.442 S	147° 16'.561 E
	light beacon, <i>Q.7m 10M</i> , without topmark	2° 02'.663 S	147° 25'.203 E

Delete	beacon	2° 00'.91 S	147° 16'.83 E
	beacon	2° 01'.40 S	147° 16'.56 E
	beacon	2° 01'.18 S	147° 16'.27 E
	light and sector emanating from light	2° 02'.66 S	147° 25'.16 E

**Aus 662 (plan, Lorengau Bay)**

Insert	light beacon, <i>Fl.R.4s</i> , with port lateral topmark	2° 00'.933 S	147° 16'.778 E
	light beacon, <i>Q.R.</i> , with port lateral topmark	2° 01'.191 S	147° 16'.261 E
	light beacon, <i>Fl.G.1.5s</i> , with starboard lateral topmark	2° 01'.442 S	147° 16'.561 E

Delete	beacon	2° 00'.92 S	147° 16'.83 E
	beacon	2° 01'.19 S	147° 16'.27 E
	beacon	2° 01'.41 S	147° 16'.56 E

**137\* AUSTRALIA - WESTERN AUSTRALIA - Port Hedland - Depths**

Port Hedland Port Authority (DHDB 2209131)

**Aus 54 [90/2013]**

Insert	accompanying block A	20° 18'.3 S	118° 34'.3 E
	accompanying block B	20° 19'.7 S	118° 34'.0 E

**138\* AUSTRALIA - SOUTH AUSTRALIA - Port Lincoln - Light**

Australian Hydrographic Service (AA648146)

**Aus 133 (plan, Port Lincoln) [95/2013]**

Amend	light to <i>Q.R.5m 2M</i>	34° 42'.16 S	135° 51'.31 E
-------	---------------------------	--------------	---------------

**139\* AUSTRALIA - SOUTH AUSTRALIA - Fisherman Bay - Light beacon**

Department of Planning, Transport and Infrastructure SA Notice 3/2013 (AA648451)

**Aus 778 [44/2013]**

Amend	light beacon to <i>Fl.G.3s</i>	33° 32'.0 S	137° 53'.1 E
-------	--------------------------------	-------------	--------------

**140\* AUSTRALIA - SOUTH AUSTRALIA - Port Victoria - Nav aids**

Department of Planning, Transport and Infrastructure SA Notice 37/2012 (AA646775)

**Aus 776 [448/2012]**

Insert	light beacon, <i>Fl.G.</i> 3s, with starboard lateral topmark	34° 30'.41 S	137° 28'.43 E
	light beacon, <i>Fl.R.</i> 3s, with port lateral topmark	34° 26'.80 S	137° 23'.87 E
	west cardinal light beacon, <i>Q(9)15s</i> , with topmark	34° 26'.02 S	137° 24'.85 E

Delete	light buoy	34° 26'.8 S	137° 23'.8 E
	depth, 7 <sub>3</sub> m	34° 25'.8 S	137° 24'.8 E
	rock	34° 26'.0 S	137° 24'.8 E

**Aus 777 [944/2012]**

Insert	light beacon, <i>Fl.R.</i> 3s, with port lateral topmark	34° 26'.80 S	137° 23'.87 E
	west cardinal light beacon, <i>Q(9)15s</i> , with topmark	34° 26'.02 S	137° 24'.85 E

Delete	rock	24° 26'.0 S	137° 24'.8 E
	light buoy	34° 26'.8 S	137° 23'.8 E

**AX 00776S [448/2012]**

Insert	light beacon, <i>Fl.R.</i> 3s, with port lateral topmark	34° 26'.80 S	137° 23'.87 E
	west cardinal light beacon, <i>Q(9)15s</i> , with topmark	34° 26'.02 S	137° 24'.85 E
	light beacon, <i>Fl.G.</i> 3s, with starboard lateral topmark	34° 30'.41 S	137° 28'.43 E

Delete	depth, 7 <sub>3</sub> m	34° 25'.8 S	137° 24'.8 E
	rock	34° 26'.0 S	137° 24'.8 E
	light buoy	34° 26'.8 S	137° 23'.8 E

**141(P)/2013 AUSTRALIA - NEW SOUTH WALES - Port Macquarie - Light trial***Former Notice - 847(T)/2010 is cancelled**Date - Until 30 April 2013*

NSW Roads and Maritime Services Notice 1275/2012 (AA650945)

A light, Oc.WRG.4s, with sectors White 244° - 249°, Red 249° - 269°, Green 239° - 244° exists in position 31° 25'.61 S 152° 54'.87 E.

**Chart which will be affected - Aus 219****142(T)/2013 AUSTRALIA - NEW SOUTH WALES - Clarence River - Nav aids destroyed or off station; depths**

Port of Clarence River Notice 3/2013 (AA649244)

Nav aids in the Clarence River may be destroyed or off station and depths may not be consistent with charted information due to recent flooding.

Mariners are advised to navigate with caution in the area.

**Chart temporarily affected - Aus 222****143(T)/2013 AUSTRALIA - QUEENSLAND - Gold Coast - The Broadwater - Nav aids destroyed or off station**

Maritime Safety Queensland Notice 88(T)/2013 (AA649225)

Nav aids in the Gold Coast Broadwater may be destroyed or off station and depths may not be consistent with charted information due to recent flooding.

Mariners are advised to navigate with caution in the area.

**Chart temporarily affected - Aus 230**

**144(T)/2013 AUSTRALIA - QUEENSLAND - Moreton Bay - Brisbane River - Depth information**

Former Notice - 101(T)/2013 is cancelled

Brisbane Port Corporation (AA651155), Maritime Safety Queensland Notice 1305(T)/2012 (AA643540)

Available depths and under keel clearances (UKC) at 7 February 2013:

<i>Berth</i>	<i>Metres</i>	<i>Remarks</i>
* Fisherman Islands No11	13.7	
* Fisherman Islands No10	13.7	
* Fisherman Islands No9	13.5	
* Fisherman Islands No8	13.5	
* Fisherman Islands No7	13.2	
Fisherman Islands No6	13.9	
Fisherman Islands No5	14.0	
* Fisherman Islands No4	13.0	
* Fisherman Islands No3	12.5	
* Fisherman Islands No2	13.2	
* Fisherman Islands No1	13.2	
* Fisherman Islands Grain and Woodchip	12.8	
* Caltex Fisherman Islands	13.8	
* Fisherman Islands Coal	13.5	
Fisherman Islands General Purpose	11.6	
* BP Luggage Point	13.2	
* Caltex Products	9.8	
* Cement Australia Co Wharf	8.8	
BP Products	10.9	
* Shell	10.5	
* Pacific Terminals	10.5	
* Incitec North	9.9	
* Incitec South	9.2	
Pinkenba 1	10.5	
Pinkenba 2	10.5	
Riverside Marina	-	
Sugar Terminal	9.9	
Cairncross Fitting Out Wharf	8.3	
Cairncross Breasting Wharf	6.1	
Brisbane Naval Wharf	4.3	
* Maritime No1	9.1	
* Hamilton No4	9.1	
Hamilton No1	8.6	
* Brisbane Cruise Ship Terminal	9.1	

	<i>Metres</i>	<i>UKC/Remarks</i>
<i>Moreton Bay:</i>		
North West Channel	15.0	2.3 (280m width)
North West Bypass Channel	9.2	1.6
Spitfire Channel	15.0	1.5 (600m width) Shoaling least depth, 14.6m, exists in position 27° 02'.39 S 153° 15'.66 E.
East Knoll Bypass Channel	6.0	1.4
East Channel	15.0	1.5 (300m width from western side)
Main Channel (M8 - M9)	10.0	1.8
Entrance Channel (E5 - EBCN)	14.7	1.5

<i>Brisbane River:</i>		
* Outer Bar Cutting	13.9	1.46
* Inner Bar Cutting	13.3	1.46
* Fisherman Islands Swing Basin	13.3	1.3
* Pelican Banks Reach to Hamilton Reach	9.0	0.6 / 0.9 (draft/tide)
Cement Australia Swing Basin	9.1	0.6 / 0.9 (draft/tide)
Pinkenba Swing Basin	9.1	0.6 / 0.9 (draft/tide)
* Hamilton Swing Basin	8.8	0.6 / 0.9 (draft/tide)
* Indicates new or revised entry.		

**Chart temporarily affected - Aus 235 - Aus 236 - Aus 237 - Aus 238 - Aus 814 - Aus 815**

**145(T)/2013 AUSTRALIA - QUEENSLAND - Moreton Bay - Brisbane River - Nav aids destroyed or off station; depths**  
Maritime Safety Queensland Notice 76(T)/2013 (AA649220)

Nav aids in Moreton Bay and the Brisbane River may be destroyed or off station due to recent flooding.

Depths may not be consistent with charted information.

Mariners are advised to navigate with caution in the area.

**Chart temporarily affected - Aus 235 - Aus 236 - Aus 237 - Aus 238 - Aus 814 - Aus 815**

**146(T)/2013 AUSTRALIA - QUEENSLAND - Moreton Bay - Ship to ship transfer completed**

*Former Notice - 1136(T)/2012 is cancelled*

Maritime Safety Queensland Notice 1213(T)/2012 (AA636768)

Cancel this notice on receipt.

**Chart formerly affected - Aus 236**

**147(T)/2013 AUSTRALIA - QUEENSLAND - Moreton Bay - Cabbage Tree Head - Dredging operations completed**

*Former Notice - 298(T)/2012 is cancelled*

Maritime Safety Queensland Notice 211(T)/2012 (AA587829)

Cancel this notice on receipt.

**Chart formerly affected - Aus 236**

**148(T)/2013 AUSTRALIA - QUEENSLAND - Moreton Bay - Margate - Nav aids destroyed or off station**

Maritime Safety Queensland Notice 96(T)/2013 (AA649240)

The starboard light beacon, *Fl.G.6s* (27° 14'.50 S 153° 07'.40 E) has been destroyed.

The port buoy (27° 14'.96 S 153° 06'.86 E) is off station.

Mariners are advised to navigate with caution in the area.

**Chart temporarily affected - Aus 236**

**149(T)/2013 AUSTRALIA - QUEENSLAND - Pumicestone Channel - Nav aids destroyed or off station; depths**

Maritime Safety Queensland Notice 80(T)/2013 (AA649223)

Nav aids in Pumicestone Channel may be destroyed or off station due to recent flooding.

Depths may not be consistent with charted information.

Mariners are advised to navigate with caution in the area.

**Chart temporarily affected - Aus 235**



**150(T)/2013 AUSTRALIA - QUEENSLAND - Pumicestone Channel - Dredging operations***Date - Until 1 May 2013*

Maritime Safety Queensland Notice 112(T)/2013 (AA650407)

The dredge *Nabis* is conducting dredging operations between positions 26° 49'.26 S 153° 07'.35 E and 26° 50'.53 S 153° 06'.99 E.

A floating pipeline exists from the dredge to the adjacent shore.

The dredge will display appropriate lights and shapes.

Mariners are advised to navigate with caution in the area.

**Chart temporarily affected - Aus 235****151(T)/2013 AUSTRALIA - QUEENSLAND - Mooloolaba - Shoaling; dredging operations***Former Notice - 103(T)/2013 is cancelled*

Maritime Safety Queensland Notices 113(T)/2013, 121(T)/2013 (AA650412, AA651161)

Shoaling, extending 235m southwest from the eastern breakwater, exists with a least depth of 1.8m in positions 26° 40'.77 S 153° 07'.94 E and 26° 40'.78 S 153° 07'.90 E.

A port lateral light buoy, *Fl.R.2-5s*, exists in position 26° 40'.81 S 153° 07'.80 E and marks the western edge of the shoal. Mariners with deep draught vessels should consider navigating south of this buoy during low tide as their approach into the river.

The dredge *Port Frederick* is conducting dredging operations in the entrance channel. A floating pipeline exists from the dredge to the western breakwater. The dredge will display appropriate lights and shapes and will monitor VHF Ch 12 and Ch 16.

Mariners are advised to keep at least 30m clear from the seaward end of the eastern breakwater due to obstructions and to navigate with caution in the area.

**Chart temporarily affected - Aus 235****152(T)/2013 AUSTRALIA - QUEENSLAND - Bundaberg - Burnett River - Nav aids destroyed or off station; depths**

Maritime Safety Queensland Notice 97(T)/2013 (AA649700)

Nav aids in the Burnett River may be destroyed or off station due to recent flooding.

The Port of Bundaberg is closed to all commercial shipping and is closed to all vessels during the hours of darkness.

Depths may not be consistent with charted information.

Mariners are advised to navigate with caution in the area.

**Chart temporarily affected - Aus 242****153(T)/2013 AUSTRALIA - QUEENSLAND - Gladstone - Facing Island - Light buoy off station**

Maritime Safety Queensland Notice 89(T)/2013 (AA649241)

The special light buoy, *Q.Y* (23° 50'.00 S 151° 25'.71 E), is off station.

**Chart temporarily affected - Aus 819**

**154(T)/2013 AUSTRALIA - QUEENSLAND - Gladstone - Friend Point to Laird Point - Dredging operations completed**  
*Former Notice - 953(T)/2012 is cancelled*  
 Maritime Safety Queensland (AA650966)

Cancel this notice on receipt.

**Chart formerly affected - Aus 245 - Aus 819**

**155(T)/2013 AUSTRALIA - QUEENSLAND - Port Alma - Nav aids destroyed or off station; depths**  
 Maritime Safety Queensland Notice 91(T)/2013 (AA649242)

Nav aids in Port Alma may be destroyed or off station due to recent flooding.

Depths may not be consistent with charted information.

The port is closed to all commercial shipping.

Mariners are advised to navigate with caution in the area.

**Chart temporarily affected - Aus 247 - Aus 265**

**156(T)/2013 AUSTRALIA - QUEENSLAND - Rosslyn Bay - Light destroyed; light structure damaged**  
 Maritime Safety Queensland Notice 115(T)/2013 (AA650916)

The light, *Fl.R.2s* (23° 09'.54 S 150° 47'.33 E), has been destroyed.

The light structure, *Fl.G.6s* (23° 09'.54 S 150° 47'.11 E), has been damaged.

**Chart temporarily affected - Aus 247 - Aus 819 - Aus 820 - AX 00367S - AX 00820S**

**157(T)/2013 AUSTRALIA - QUEENSLAND - Hay Point - Diving operations**  
*Former Notice - 900(T)/2012 is cancelled*  
*Date - Until 28 March 2013*  
 Maritime Safety Queensland Notice 104(T)/2013 (AA650419)

Diving operations are in progress in the vicinity of berth No1 at the DBCT (21° 15'.01 S 149° 18'.36 E).

MV *Shadows* is onsite and will display appropriate lights and shapes and will monitor VHF Ch 14 and Ch 16.

Mariners are advised to navigate with caution in the area.

**Chart temporarily affected - Aus 249 - Aus 250 - AX 00249S**

**158(T)/2013 AUSTRALIA - QUEENSLAND - Mackay - Light beacon destroyed**  
*Former Notice - 857(T)/2012 is cancelled*  
 Maritime Safety Queensland Notice 75(T)/2013 (AA649210)

The port lateral light beacon, *Fl.R.2.5s* (21° 09'.00 S 149° 13'.18 E), has been destroyed.

**Chart temporarily affected - Aus 249 - AX 00249S**

**159(T)/2013 AUSTRALIA - QUEENSLAND - Whitehaven Bay - Light beacon destroyed**  
Maritime Safety Queensland Notice 77(T)/2013 (AA649213)

The north cardinal light beacon, Q (20° 17'.53 S 149° 03'.35 E), has been destroyed.

**Chart temporarily affected - Aus 252 - Aus 253**

**160(T)/2013 AUSTRALIA - QUEENSLAND - Abbot Point - Scientific instruments recovered**  
*Former Notice - 249(T)/2012 is cancelled*  
Maritime Safety Queensland (AA650711)

Cancel this notice on receipt.

**Chart formerly affected - Aus 255**

**161(T)/2013 AUSTRALIA - QUEENSLAND - Hinchinbrook Channel - Light buoy off station**  
Maritime Safety Queensland Notice 119(T)/2013 (AA650921)

No16 port lateral light buoy, Q.R (18° 28'.88 S 146° 13'.41 E), is off station.

**Chart temporarily affected - Aus 259**

**162(P)/2013 AUSTRALIA - QUEENSLAND - Rib Reef - Racon to be established**  
*Date - On or about 9 February 2013*  
Australian Maritime Safety Authority Preliminary ATH 1/2013 (AA648928)

A racon, morse C, will be established in position 18° 28'.66 S 146° 52'.75 E.

**Chart which will be affected - Aus 828**

**163(T)/2013 AUSTRALIA - QUEENSLAND - Cairns - Dredging operations**  
*Date - Until 23 February 2013*  
Maritime Safety Queensland Notice 102(T)/2013 (AA649557)

The dredge *Wilunga* is conducting dredging operations in the vicinity of berths No8 (16° 55'.91 S 145° 46'.79 E), No10 (16° 56'.04 S 145° 46'.77 E) and No11 (16° 56'.17 S 145° 46'.77 E).

All hazards to navigation will be marked by special light buoys.

Mariners are advised to navigate with caution in the area.

**Chart temporarily affected - Aus 263 - Aus 264**

**164(T)/2013 PAPUA NEW GUINEA - Nuakata Passage - Oreore Channel - Light beacon destroyed**  
National Maritime Safety Authority PNG Notice 2(T)/2013 (AA650413)

The port lateral light beacon, Q.R (10° 13'.69 S 150° 52'.77 E), has been destroyed.

**Chart temporarily affected - Aus 628**

**165(T)/2013 PAPUA NEW GUINEA - Daia Point - Light unlit**  
National Maritime Safety Authority PNG Notice 3(T)/2013 (AA649248)

The light, *Fl.6s 19m 10M* (8° 59'.50 S 149° 08'.31 E), is unlit.

**Chart temporarily affected - Aus 520 - Aus 4620 (INT 620) - Aus 4621 (INT 621) - AX 04620U - AX 04621U**

8 February 2013

**166(T)/2013 PAPUA NEW GUINEA - Condor Point - Light unlit**  
National Maritime Safety Authority PNG Notice 4(T)/2013 (AA649248)

The light, *Fl(2)8s 15m 10M* (4° 07'.12 S 144° 51'.70 E), is unlit.

**Chart temporarily affected - Aus 388 - Aus 4622 (INT 622)**

**167(T)/2013 AUSTRALIA - QUEENSLAND - Weipa - Depth information**  
*Former Notice - 1002(T)/2012 is cancelled*  
Maritime Safety Queensland Notice 100(T)/2013 (AA649386)

Available depths as at 1 February 2013:

	<i>Metres</i>
* Weipa Approaches	11.5
* South Channel	11.5
Departure Channel	11.3
Cora Bank South Channel	7.3
Humbug Point Approaches	8.6
Humbug Point Berth	9.5
Evans Landing	9.6
Lorim Point East	12.3
Lorim Point West	12.3

\* Indicates revised entry

**Chart temporarily affected - Aus 4**

**168(T)/2013 AUSTRALIA - NORTHERN TERRITORY - Darwin - Light beacon unlit**  
Darwin Port Corporation Notice 18(T)/2013 (AA650923)

The light beacon, *F.Bu. 11m 6M & Q.Bu. 3M* (12° 29'.80 S 130° 53'.19 E), is unlit.

**Chart temporarily affected - Aus 26 - Aus 28 - AX 00026T**

**169(T)/2013 AUSTRALIA - WESTERN AUSTRALIA - Port Hedland - Drilling operations**  
*Date - Until 22 February 2013*  
Port Hedland Port Authority Notice 1/2013 (AA650774)

Jack-up barge *Ocean Driller* is conducting drilling operations in an area bounded by the following positions:

20° 19'.88 S 118° 34'.98 E  
20° 19'.85 S 118° 35'.10 E  
20° 19'.90 S 118° 35'.21 E  
20° 20'.17 S 118° 35'.23 E  
20° 20'.38 S 118° 35'.17 E  
20° 20'.18 S 118° 34'.86 E.

A 50m exclusion zone exists around the barge.

The barge will monitor VHF Ch 12 and Ch 16.

Mariners are advised to navigate with caution in the area.

**Chart temporarily affected - Aus 54**

**170(T)/2013 AUSTRALIA - WESTERN AUSTRALIA - Dampier Archipelago - Drill rig northwestwards***Former Notice* - 1289(T)/2012 is cancelled

Australian Maritime Safety Authority Aus coast Warning 22/2013 (AA648664)

Drill rig *ENSCO 109* is conducting drilling operations in position 20° 07'.60 S 116° 26'.14 E.**Chart temporarily affected - Aus 327 - Aus 741 - Aus 742****171(T)/2013 AUSTRALIA - WESTERN AUSTRALIA - Dampier Archipelago - Offshore infrastructure northwestwards**

NOPSEMA (AA639400), Santos Ltd (AA648915 - AA648918)

Wells, with a 500m radius safety zone, will be established in positions 19° 14'.65 S 116° 47'.73 E and 19° 18'.29 S 116° 45'.55 E.

Pipelines are being laid in an area bounded by the following positions:

19° 13'.64 S 116° 49'.15 E

19° 19'.61 S 116° 46'.29 E

19° 17'.15 S 116° 35'.16 E

19° 14'.44 S 116° 38'.02 E.

**Chart temporarily affected - Aus 327 - Aus 741 - Aus 4722 (INT 722) - Aus 4723 (INT 723) - AX 04722U - AX 04723U****172(T)/2013 AUSTRALIA - WESTERN AUSTRALIA - Dampier Archipelago - Mooring buoys withdrawn northwestwards***Former Notice* - 1292(T)/2012 is cancelled

Cal Dive International (Australia) Pty Limited (AA650840)

Cancel this notice on receipt.

**Chart formerly affected - Aus 327 - Aus 741 - Aus 742****173(T)/2013 AUSTRALIA - WESTERN AUSTRALIA - Barrow Island - Scientific instrument recovered***Former Notice* - 124(T)/2011 is cancelled

Chevron Australia Pty Ltd (AA649467)

Cancel this notice on receipt.

**Chart formerly affected - Aus 62 - Aus 742 - Aus 743****174(T)/2013 AUSTRALIA - WESTERN AUSTRALIA - Barrow Island - Scientific instrument recovered***Former Notice* - 988(T)/2011 is cancelled

Chevron Australia Pty Ltd (AA649467)

Cancel this notice on receipt.

**Chart formerly affected - Aus 62 - Aus 742**

**175(T)/2013 AUSTRALIA - WESTERN AUSTRALIA - Barrow Island - Anchorage***Former Notice* - 1088(T)/2010 is cancelled

Department of Transport WA Notice 111/2011 (AA649470)

An anchorage exists in an area bounded by the following positions:

20° 41'.93 S 115° 29'.52 E  
 20° 41'.93 S 115° 30'.09 E  
 20° 42'.47 S 115° 30'.09 E  
 20° 42'.47 S 115° 29'.80 E  
 20° 42'.20 S 115° 29'.80 E  
 20° 42'.20 S 115° 29'.51 E.

Mariners are advised to navigate with caution in the area.

**Chart temporarily affected - Aus 62 - Aus 742****176(T)/2013 AUSTRALIA - WESTERN AUSTRALIA - Exmouth Plateau - Seismic survey***Former Notice* - 114(T)/2013 is cancelled*Date* - Until 22 February 2013

Seabird Exploration FZ-LLC (AA650914)

SV *Aquila Explorer* is conducting a survey running lines between:

SOL	EOL
20° 49'.55 S 114° 07'.44 E	15° 40'.37 S 113° 02'.49 E
19° 46'.74 S 112° 50'.40 E	19° 52'.81 S 112° 28'.99 E
19° 59'.79 S 111° 36'.08 E	21° 24'.95 S 114° 16'.95 E
16° 37'.16 S 115° 37'.09 E	17° 04'.03 S 118° 53'.76 E
16° 31'.13 S 117° 57'.02 E	19° 31'.50 S 120° 12'.45 E.

**Chart temporarily affected - Aus 326 - Aus 327 - Aus 328 - Aus 329 - Aus 740 - Aus 741 - Aus 744 - Aus 4722 (INT 722) - Aus 4723 (INT 723) - Aus 4725 (INT 725) - AX 04722U - AX 04723U****177(T)/2013 AUSTRALIA - WESTERN AUSTRALIA - False Island - Wreck***Former Notice* - 115(T)/2013 is cancelled

Department of Transport WA 29/2013 (AA650865)

A stranded wreck exists in position 21° 21'.0 S 115° 30'.0 E.

An exclusion zone exists in an area bounded by the following positions:

21° 20'.50 S 115° 29'.50 E  
 21° 20'.60 S 115° 31'.35 E  
 21° 21'.60 S 115° 31'.35 E  
 21° 21'.50 S 115° 29'.50 E.

Mariners are advised to navigate with caution in the area.

**Chart temporarily affected - Aus 327 - Aus 328 - Aus 743****178(T)/2013 AUSTRALIA - WESTERN AUSTRALIA - Muiron Islands - Drill rig northwestwards***Former Notice* - 1218(T)/2012 is cancelled*Date* - Until 13 February 2013Australian Maritime Safety Authority Aus coast Warning 27/2013 (AA649374), MODU *Atwood Falcon* (AA649373)Drill rig *Atwood Falcon* is conducting drilling operations in position 21° 20'.20 S 114° 04'.94 E.**Chart temporarily affected - Aus 328 - Aus 329 - Aus 744**

**179(T)/2013 AUSTRALIA - TASMANIA - Hobart - New Town Bay - Wreck**  
 Marine and Safety Tasmania Notice M22/2013 (AA650422)

A wreck exists in position 42° 50'.66 S 147° 19'.21 E.

Mariners are advised to navigate with caution in the area.

**Chart temporarily affected - Aus 171 - Aus 172**

**180(T)/2013 AUSTRALIA - VICTORIA - St Kilda - Harbour works**

Date - Until 30 October 2013

Victorian Notice 19(T)/2013 (AA649627)

Works associated with the development of a northern and southern breakwater and installation of piles are in progress.

Temporary landings will be installed in positions 37° 51'.63 S 144° 57'.95 E, 37° 51'.83 S 144° 57'.85 E and 37° 51'.64 S 144° 57'.76 E.

A temporary groyne will be installed between positions 37° 51'.64 S 144° 58'.17 E and 37° 51'.63 S 144° 57'.95 E.

Special light buoys, *Fl. Y. 5s*, which mark the construction zone exist in the following positions:

37° 51'.91 S 144° 58'.01 E  
 37° 51'.90 S 144° 57'.93 E  
 37° 51'.85 S 144° 57'.86 E  
 37° 51'.83 S 144° 57'.84 E  
 37° 51'.80 S 144° 57'.88 E  
 37° 51'.70 S 144° 57'.86 E  
 37° 51'.66 S 144° 57'.76 E  
 37° 51'.64 S 144° 57'.74 E  
 37° 51'.64 S 144° 57'.86 E  
 37° 51'.64 S 144° 57'.94 E  
 37° 51'.66 S 144° 57'.95 E.

All hazards to navigation will be marked by lights.

Mariners are advised to navigate with caution in the area.

**Chart temporarily affected - Aus 155**

**181(T)/2013 AUSTRALIA - VICTORIA - Kilcunda - Works**

Date - Until 31 March 2013

Victorian Notice 21/2013 (AA650437)

Works associated with the desalination plant are in progress within a 500m radius of position 38° 35'.95 S 145° 30'.63 E. The area is marked by four special light buoys, *Fl. Y. 2s*.

**Chart temporarily affected - Aus 150 - Aus 801**

**HYDROGRAPHIC REPORTS**

Nil Reports



## NAVIGATION WARNINGS

The following radio messages have been received during the period to 8 February 2013. Signal copies of these messages may be destroyed. It is recommended that the reprint of Navigational Warnings should be kept in a file or a book divided into areas. Cancellation should be made on receipt of signals and reprints.

Rigs on location other than those listed in the latest Section III summary are the subject of Radio Navigational Warnings. Rigs in transit will not be the subject of Warnings.

## AUSCOAST WARNING

- 018 Special purpose vessel *Voyager Explorer* conducting seismic survey in an area bounded by 38° 41'.6 S to 38° 51'.2 S and 143° 57'.8 E to 144° 30'.2 E. Vessel towing 4 cables of 4M in length marked with yellow tail buoy, Morse U 5M clearance requested.
- 019 Special purpose vessel *Rockwater 2* conducting underwater operations in an area bounded by 19° 13'.7 S to 19° 19'.7 S and 116° 35'.1 E to 116° 49'.1 E. 2.5M clearance requested.
- 020 Cancelled.
- 021 Special purpose vessel *Aquila Explorer* conducting seismic survey in an area bounded by 15° 27'.10 S to 21° 48'.25 S and 111° 59'.93 E to 115° 01'.73 E. 10M clearance requested.
- 022 Drill rig *ENSCO 109* in position 20° 07'.60 S 116° 26'.14 E. 2.5M clearance requested.
- 023 Cancelled.
- 024 FPSO vessel *Ngujima-Yin* departed location riser remains in position 21° 26'.0 S 114° 04'.0 E depth 20 metres.
- 025 Cancelled.
- 026 North West Cape light K1710 in position 21° 48'.37 S 114° 09'.61 E unlit.
- 027 Drill rig *Atwood Falcon* in position 21° 20'.2 S 114° 04'.9 E. 2.5M clearance requested.
- 028 8 lit mooring buoys each 3m in diameter in vicinity 19° 33'.9 S 116° 00'.0 E.

## NAVAREA X WARNINGS

- 002 Cancelled.
- 003 Cancelled.
- 004 Cancelled.
- 005 Cancelled.
- 006 Cancelled.

## Navigational warnings in force as at 080001UTC FEB 13.

## Auscoast

2012 303 318 321 322

2013 002 007 012 014 016 018 019 021 022 024 026 027 028

## Navarea X

2013 001

## Summary of mobile drilling rigs as at 080001UTC FEB 13.

Name	Position
Jack Bates	13° 24'.93 S 123° 18'.21 E
Transocean Legend	13° 44'.71 S 122° 07'.38 E
Nan Hai 6	19° 17'.57 S 116° 45'.82 E
Ensco 109	20° 07'.60 S 116° 26'.14 E
Atwood Eagle	19° 33'.98 S 116° 00'.22 E
Ensco 104	20° 24'.85 S 115° 43'.82 E
Atwood Falcon	21° 20'.20 S 114° 04'.90 E
Deepwater Frontier	19° 47'.59 S 114° 38'.93 E
Ocean America	20° 43'.31 S 114° 36'.55 E
Noble Clyde Boudreaux	22° 05'.20 S 113° 10'.85 E
Atwood Osprey	19° 46'.85 S 112° 48'.79 E
Stena Clyde	39° 06'.50 S 142° 57'.01 E

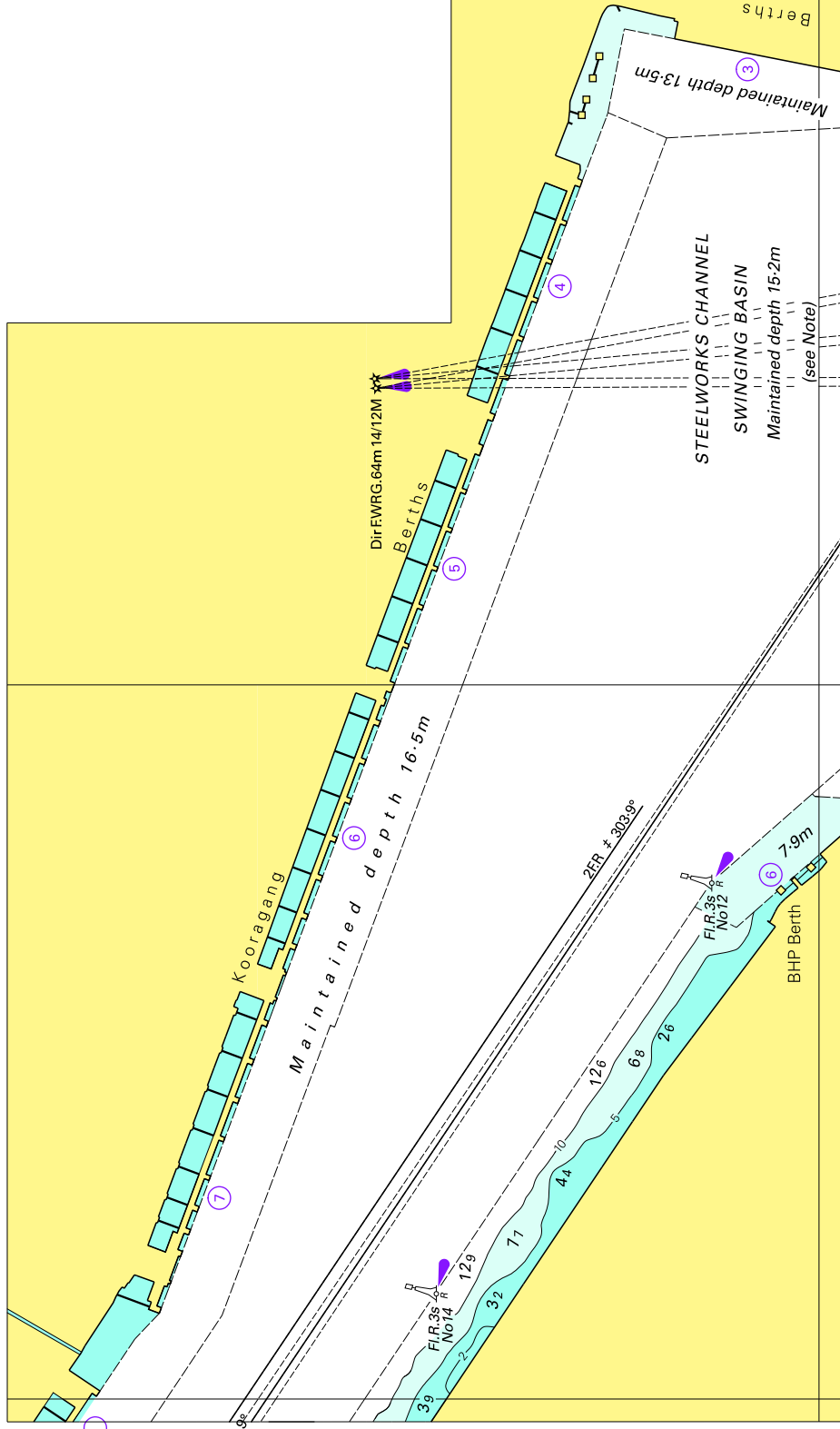
## NAVAREA XIV WARNINGS

Nil.

## Navarea XIV warnings in force as at 080001UTC FEB 13.

076 095 105 108

To accompany Australian Notice to Mariners 125/2013

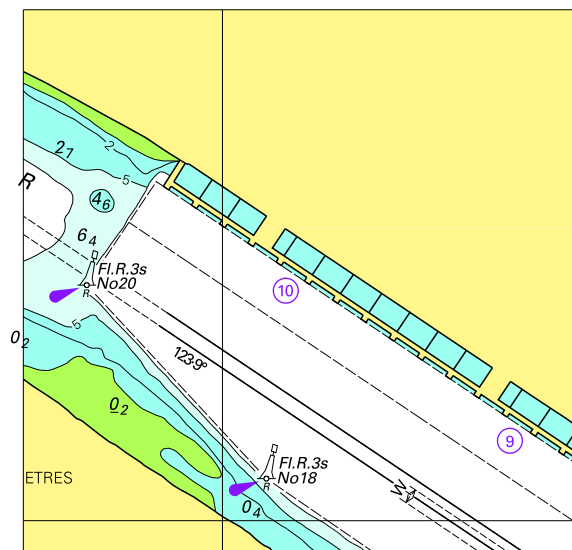


Block A for chart Aus 208

© Commonwealth of Australia 2013

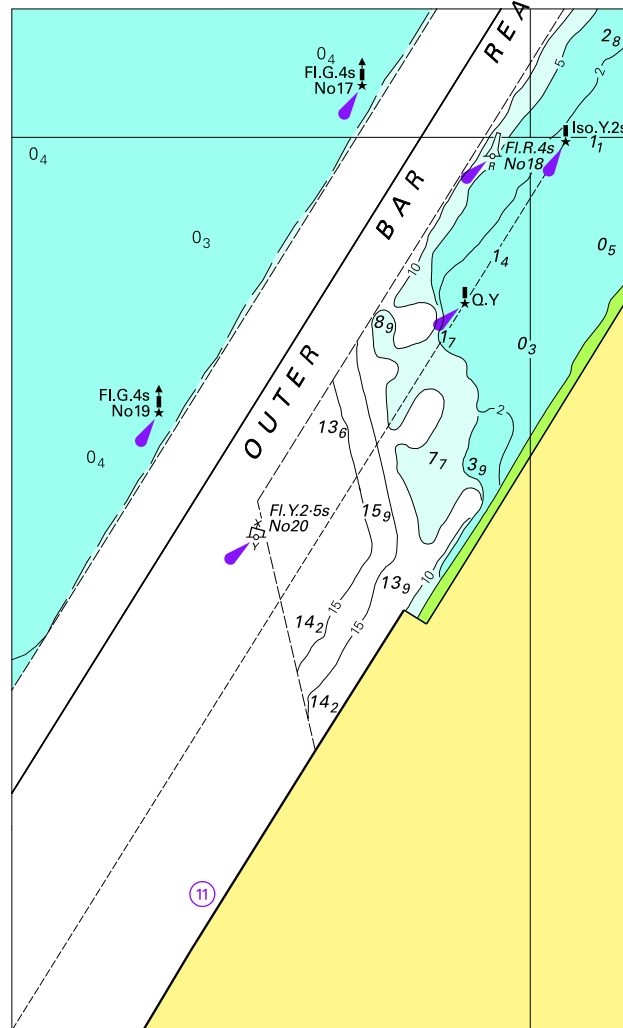
(207.8 x 122mm)

To accompany Australian Notice to Mariners 125/2013



© Commonwealth of Australia 2013  
**Block B for chart Aus 208** (73.8 x 71.9mm)

To accompany Australian Notice to Mariners 126/2013

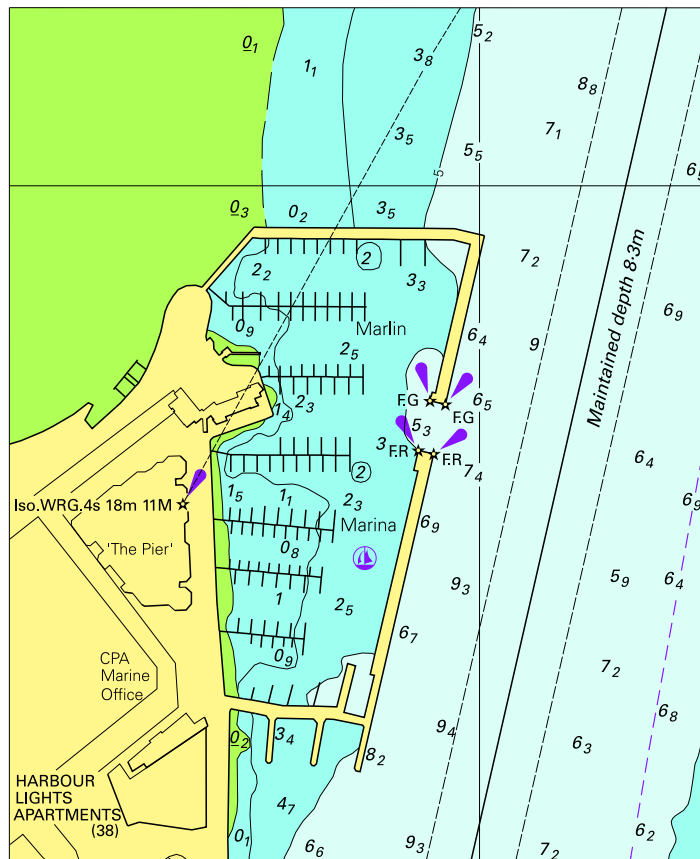


© Commonwealth of Australia 2013

Block for chart Aus 237

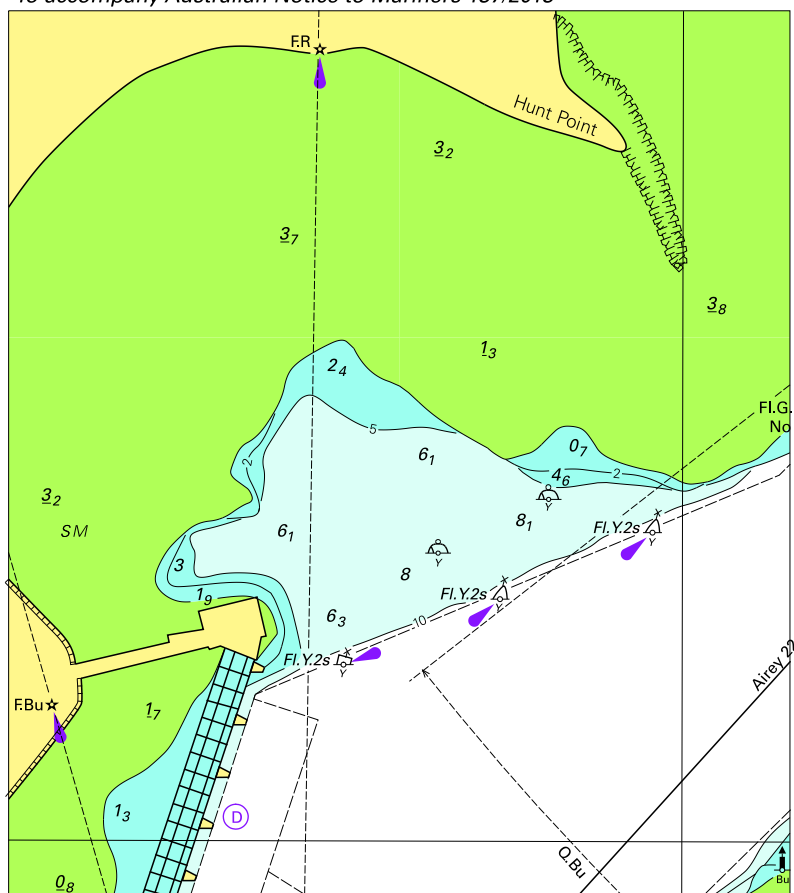
(81.8 x 135.1mm)

To accompany Australian Notice to Mariners 128/2013



Block for Aus 263 © Commonwealth of Australia 2013 (91.8 x 112.9 mm)

To accompany Australian Notice to Mariners 137/2013

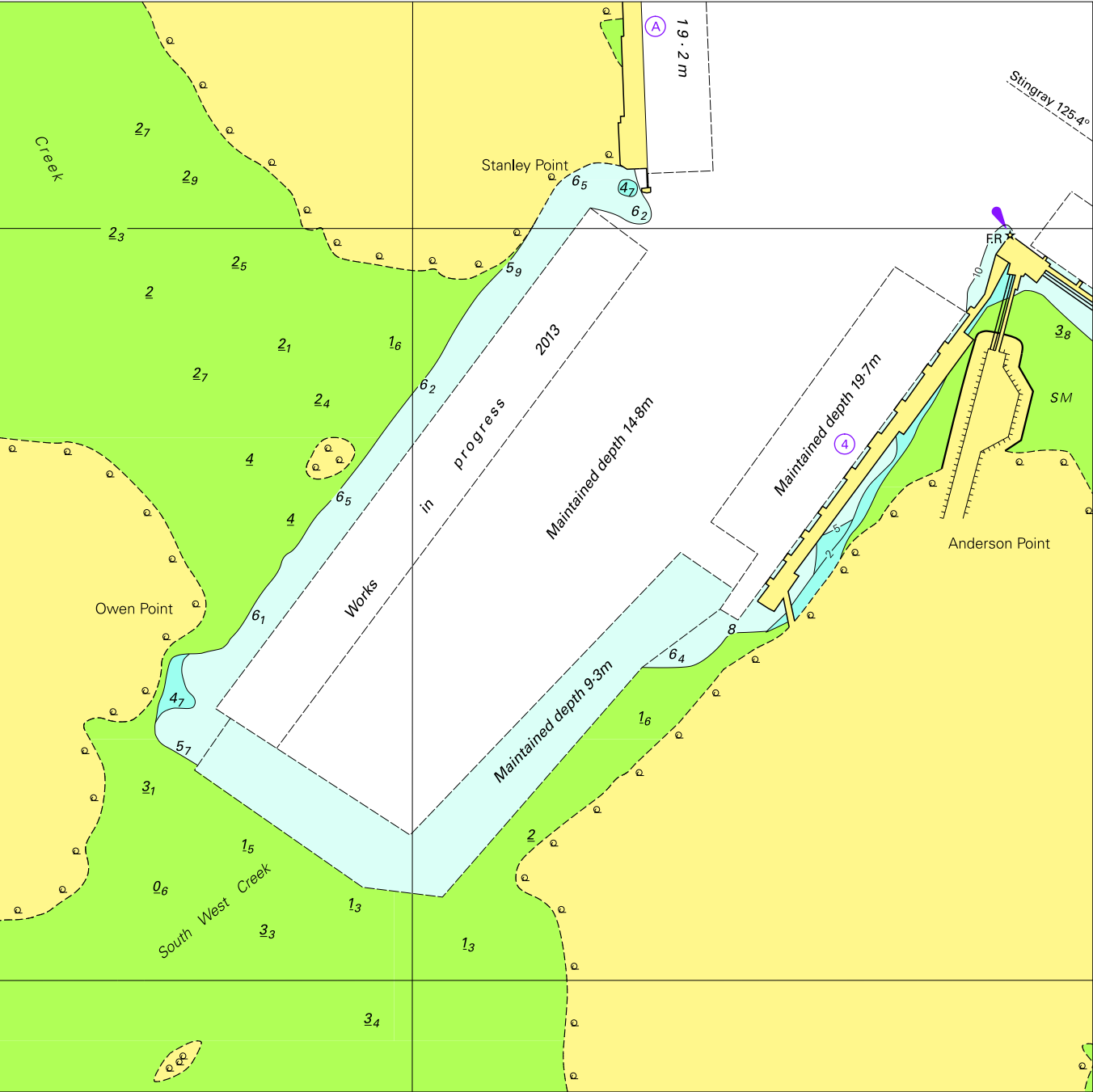


© Commonwealth of Australia 2013

(103.3 x 116.9mm)

Block A for chart Aus 54

To accompany Australian Notice to Mariners 137/2013



Block B for chart Aus 54