



Australian Notices to Mariners are the authority for correcting Australian Charts and Publications

AUSTRALIAN NOTICES TO MARINERS

Notices 1190 - 1238



*The Hydrographer and Staff of the Australian Hydrographic Service
wish all users of Australian Navigational Products a Merry Christmas,
a Happy New Year and safe, successful voyages in 2014.*



Published fortnightly by the Australian Hydrographic Service

Commodore B.K. BRACE RAN
Hydrographer of Australia

SECTIONS.

- I. **Australian Notices to Mariners, including blocks and notes.**
- II. **Hydrographic Reports.**
- III. **Navigational Warnings.**

SUPPLEMENTS.

- I. **Tracings**
- II. **Cumulative List of Australian Notices to Mariners.**
- III. **Cumulative List of Temporary and Preliminary Australian Notices to Mariners.**
- IV. **Temporary and Preliminary Notices in force.**
- V. **Amendments to Admiralty List of Lights and Fog Signals (Vol K),
Radio Signals (NP 281(2), 282, 283(2), 285, 286(4)) and Sailing
Directions (NP 9, 13, 14, 15, 33, 34, 35, 36, 39, 44, 51, 60, 61, 62, 100, 136).**

© Commonwealth of Australia 2013

This work is copyright. Apart from any use permitted under the Copyright Act 1968, no part may be reproduced by any process, adapted, communicated or commercially exploited without prior written permission from The Commonwealth represented by the Australian Hydrographic Service.

IMPORTANT NOTICE

This edition of Notices to Mariners includes all significant information affecting AHS products which the AHS has become aware of since the last edition. All reasonable efforts have been made to ensure the accuracy and completeness of the information, including third party information, on which these updates are based. The AHS regards third parties from which it receives information as reliable, however the AHS cannot verify all such information and errors may therefore exist. The AHS does not accept liability for errors in third party information.

GENERAL INSTRUCTIONS

The substance of these notices should be inserted on the charts affected.

Bearings are referred to the true compass and are reckoned clockwise from North; those relating to lights are given as seen by an observer from seaward. Positions quoted in permanent notices relate to the horizontal datum for the chart(s). When preliminary or temporary notices affect multiple charts, positions will be provided in relation to only one horizontal datum and that datum will be specified. When the multiple charts do not have a common horizontal datum, mariners will be required to adjust the position(s) for those charts not on the specified datum. The range quoted for a light is its nominal range. Depths are with reference to the chart datum of each chart. Heights are above mean high water springs or mean higher high water, as appropriate.

The capital letter (P) or (T) after the number of any notice denotes a preliminary or temporary notice respectively, which are contained separately at the end of the permanent notices. A star (*) adjacent to the number of a notice indicates that the notice is based on original information.

REPORTING OF DANGERS

Mariners are particularly requested to notify the AUSTRALIAN HYDROGRAPHIC SERVICE, Locked Bag 8801 Wollongong, NSW 2500 (Fax 02-4223 6599, e-mail Hydro.NTM@defence.gov.au or, alternatively by filling in and submitting the [Hydrographic Notes](#) forms located on the web site – www.hydro.gov.au), immediately on the discovery of new dangers or suspected dangers to navigation. For changes or defects in aids to navigation notify AusSAR (Fax 02-6230 6868 or email rccaus@amsa.gov.au).

AUTHORISED USE

Copies of Australian notices are available free of charge from the Australian Hydrographic Service (AHS) website (www.hydro.gov.au) and through the eNotices (email) service (www.hydro.gov.au/enotices/enotices.htm).

Individual Notices may be copied for the purpose of inserting Notice substance on official charts and publications. Paper copies may be printed by chart agents and distributed to customers on a cost recovery basis. Participating chart agents are listed on the AHS website as providing a 'Paper Notices to Mariners' service (www.hydro.gov.au/prodserv/distributors/distributors.htm). Copies of the notices may not be sold for profit without prior written agreement.

NUMERICAL INDEX OF NOTICES TO MARINERS

Edition No 24

Notices	Aus Chart, INT Chart, ENC Cell, AHP, BA Pubs
1190	Aus 54, 63, 155, 181, 182, 242, 700
1191	Aus 198
1192	Aus 811
1193	Aus 263, 264
1194	Aus 270, 832
1195	Aus 236
1196	Aus 237, 238
1197	Aus 831
1198	Aus 826, 827
1199	Aus 257
1200	Aus 377, 379
1201	Aus 397, 399, 684
1202	Aus 518
1203	Aus 512
1204	Aus 309, 4721, INT 721, AX 00309T, 00309U, 04721U
1205	Aus 26, 28, AX 00026T
1206	Aus 64, 328, 743
1207	Aus 58, 59
1208	Aus 32
1209	Aus 141
1210	Aus 143, 155
1211	Aus 143
1212	Aus 158
1213(T)	Aus 238
1214(T)	Aus 826, 827
1215(T)	Aus 827, 828
1216(T)	Aus 292, 293
1217(T)	Aus 241
1218(T)	Aus 235
1219(T)	Aus 235, 236, 237, 238, 814, 815
1220(T)	Aus 237
1221(T)	Aus 248, 367, 820, 822, AX 00367S, 00820S, 00822S
1222(T)	Aus 260, 261, 367, 820, 822, AX 00260T, 00260S, 00367S, 00820S, 00822S
1223(T)	Aus 4
1224(T)	Aus 387, 646, 4060, 4603, 4622, INT 60, 603, 622, AX 04603U
1225(P)	Aus 28
1226(T)	Aus 59
1227(T)	Aus 328, 329, 744, 745, 4723, 4725, INT 723, 725, AX 04723U
1228(T)	Aus 54
1229(T)	Aus 57, 741, 742
1230(T)	Aus 64, 743, 744
1231(T)	Aus 181, 357
1232(T)	Aus 143, 157, 158
1233(T)	Aus 349, 787
1234(T)	Aus 348, 349, 487, 787, 4728, INT 728
1235(T)	Aus 173, 795
1236(T)	Aus 177
1237(T)	Aus 171
1238(T)	Aus 171, 796

NUMERICAL INDEX OF CHARTS AFFECTED

Edition No 24

Aus Chart	Notices
Aus 4	1223(T)
Aus 26	1205
Aus 28	1205, 1225(P)
Aus 32	1208
Aus 54	1190, 1228(T)
Aus 57	1229(T)
Aus 58	1207
Aus 59	1207, 1226(T)
Aus 63	1190
Aus 64	1206, 1230(T)
Aus 141	1209
Aus 143	1210, 1211, 1232(T)
Aus 155	1190, 1210
Aus 157	1232(T)
Aus 158	1212, 1232(T)
Aus 171	1237(T), 1238(T)
Aus 173	1235(T)
Aus 177	1236(T)
Aus 181	1190, 1231(T)
Aus 182	1190
Aus 198	1191
Aus 235	1218(T), 1219(T)
Aus 236	1195, 1219(T)
Aus 237	1196, 1219(T), 1220(T)
Aus 238	1196, 1213(T), 1219(T)
Aus 241	1217(T)
Aus 242	1190
Aus 248	1221(T)
Aus 257	1199
Aus 260	1222(T)
Aus 261	1222(T)
Aus 263	1193
Aus 264	1193
Aus 270	1194
Aus 292	1216(T)
Aus 293	1216(T)
Aus 309	1204
Aus 328	1206, 1227(T)
Aus 329	1227(T)
Aus 348	1234(T)
Aus 349	1233(T), 1234(T)
Aus 357	1231(T)
Aus 367	1221(T), 1222(T)
Aus 377	1200
Aus 379	1200
Aus 387	1224(T)
Aus 397	1201
Aus 399	1201
Aus 487	1234(T)
Aus 512	1203
Aus 518	1202
Aus 646	1224(T)
Aus 684	1201
Aus 700	1190

Aus Chart	Notices
Aus 741	1229(T)
Aus 742	1229(T)
Aus 743	1206, 1230(T)
Aus 744	1227(T), 1230(T)
Aus 745	1227(T)
Aus 787	1233(T), 1234(T)
Aus 795	1235(T)
Aus 796	1238(T)
Aus 811	1192
Aus 814	1219(T)
Aus 815	1219(T)
Aus 820	1221(T), 1222(T)
Aus 822	1221(T), 1222(T)
Aus 826	1198, 1214(T)
Aus 827	1198, 1214(T), 1215(T)
Aus 828	1215(T)
Aus 831	1197
Aus 832	1194
Aus 4060	1224(T)
Aus 4603	1224(T)
Aus 4622	1224(T)
Aus 4721	1204
Aus 4723	1227(T)
Aus 4725	1227(T)
Aus 4728	1234(T)
AX 00026T	1205
AX 00260S	1222(T)
AX 00260T	1222(T)
AX 00309T	1204
AX 00309U	1204
AX 00367S	1221(T), 1222(T)
AX 00820S	1221(T), 1222(T)
AX 00822S	1221(T), 1222(T)
AX 04603U	1224(T)
AX 04721U	1204
AX 04723U	1227(T)

INT Chart	Notices
INT 60	1224(T)
INT 603	1224(T)
INT 622	1224(T)
INT 721	1204
INT 723	1227(T)
INT 725	1227(T)
INT 728	1234(T)

1190 AUSTRALIA - Product

Australian Hydrographic Service (AA708361), UKHO (AA709174)

New Chart

<i>Chart</i>	<i>Published</i>	<i>Title and description of amendments</i>	<i>Scale</i>	<i>Index Chart</i>	<i>Price</i>
Aus 181	29/11/2013	Australia - South Coast - Victoria - Corner Inlet 38° 36'·84 S – 38° 54'·50 S 146° 10'·50 E – 146° 49'·17 E Insets: McLoughlins Entrance 38° 35'·5 S – 38° 39'·0 S 146° 52'·0 E – 146° 57'·0 E Shoal Inlet Entrance 38° 36'·15 S – 38° 41'·50 S 146° 48'·50 E – 146° 52'·92 E <i>New chart providing improved coverage of Corner Inlet and updated for latest surveys.</i>	1:50 000 1:50 000 1:50 000	Aus 5001	\$35.00

New Edition

<i>Chart</i>	<i>Published</i>	<i>Title and description of amendments</i>	<i>Scale</i>	<i>Index Chart</i>	<i>Price</i>
Aus 54	29/11/2013	Australia – North West Coast – Western Australia – Port Hedland 20° 16'·00 S – 20° 20'·54 S 118° 33'·38 E – 118° 36'·20 E <i>New edition incorporating changes to nav aids, tidal stream data and general updating throughout.</i>	1:7 500	Aus 5000	\$35.00
Aus 182	29/11/2013	Australia – South Coast – Plans in Victoria - South East Coast Plans: Lewis Channel 38° 41'·91 S – 38° 45'·41 S 146° 24'·98 E – 146° 28'·48 E Approaches to Port Albert 38° 39'·91 S – 38° 45'·00 S 146° 39'·57 E – 146° 42'·31 E Approaches to Barry Beach 38° 42'·21 S – 38° 44'·60 S 146° 21'·88 E – 146° 23'·63 E Lakes Entrance 37° 52'·50 S – 37° 54'·42 S 147° 56'·01 E – 147° 59'·67 E Port Albert 38° 40'·09 S – 38° 41'·14 S 146° 41'·33 E – 146° 42'·11 E Port Welshpool 38° 41'·91 S – 38° 42'·96 S 146° 26'·27 E – 146° 28'·18 E <i>New edition incorporating changes to nav aids, infrastructure and latest surveys.</i>	 1:25 000 1:15 000 1:12 500 1:10 000 1:7 500 1:7 500	Aus 5001	\$35.00

New Chart to be published shortly

<i>Chart</i>	<i>Title</i>	<i>Scale</i>	<i>Expected Publication Date</i>
Aus 647	Papua New Guinea – South Coast – Approaches to Caution Bay	1:50 000	13 December 2013
Aus 648	Papua New Guinea – South Coast – Caution Bay	1:10 000	13 December 2013

1190 AUSTRALIA - Product**New Edition to be published shortly**

<i>Chart</i>	<i>Title</i>	<i>Scale</i>	<i>Expected Publication Date</i>
Aus 155	Australia – South Coast – Victoria – Approaches to Port Melbourne Plans: Altona St Kilda Brighton Sandringham	1:37 500 1:7 500 1:10 000 1:10 000 1:10 000	13 December 2013
Aus 242	Australia - East Coast - Queensland – Port Bundaberg including Burnett River Plans: Port Bundaberg Burnett River (Northern Sheet) Burnett River (Southern Sheet)	1:7 500 1:10 000 1:10 000	13 December 2013

Chart permanently withdrawn

<i>Chart</i>	<i>On publication of new chart/edition</i>	<i>Remarks</i>
Aus 54	Aus 54	
Aus 63	Aus 63	Ed 22 refers
Aus 181	Aus 181	
Aus 182	Aus 182	
Aus 700	Aus 700	Ed 22 refers

Admiralty publication

<i>NP No</i>	<i>Title</i>	<i>Date</i>	<i>Remarks</i>
NP283(2)	Admiralty List of Radio Signals. Maritime Safety Information Services. The Americas, Far East and Oceania.	05/12/2013	The 2012/13 edition is cancelled.

For further details refer to the AHS website at www.hydro.gov.au for new edition and new chart stock arrival information.

When placing orders with a chart agent, mariners should advise whether their order pertains to the current edition or the new edition.

1191* AUSTRALIA - NEW SOUTH WALES - Port Hacking - Gunnamatta Bay - Notice boards; beacons

NSW Roads and Maritime Services (AA115657, AA115658, AA115669)

Aus 198 [741/2013]

Insert	notice board	34° 04'.207 S	151° 08'.801 E
	notice board	34° 04'.066 S	151° 08'.802 E
Substitute	notice board for beacon	34° 04'.35 S	151° 08'.80 E
Delete	beacon	34° 04'.18 S	151° 08'.79 E
	beacon	34° 04'.07 S	151° 08'.83 E

1192* AUSTRALIA - NEW SOUTH WALES - Smoky Cape - Light

Australian Maritime Safety Authority (AA253315)

Aus 811 [844/2013]

Move	light	30° 55'.4 S	153° 05'.2 E
	to	30° 55'.37 S	153° 05'.25 E

1193* AUSTRALIA - QUEENSLAND - Cairns - Senrab Point - Light removed

Former Notice - 971(T)/2013 is cancelled

Maritime Safety Queensland Notice 895/2013 (AA706040)

Aus 263 [247/2013]

Delete	light	16° 56'.44 S	145° 46'.73 E
--------	-------	--------------	---------------

Aus 264 [682/2013]

Delete	light	16° 56'.44 S	145° 46'.73 E
--------	-------	--------------	---------------

1194* AUSTRALIA - QUEENSLAND - Maxwell Reef to Howick Island - Light range

Australian Maritime Safety Authority (AA131668, AA341993)

Aus 270 (plan, Howick Group) [1080/2013]

Amend light range to 11/8M 14° 29'.52 S 144° 58'.66 E

Aus 832 [893/2011]

Amend light range to 11/8M 14° 47'.1 S 145° 18'.9 E

1195* AUSTRALIA - QUEENSLAND - Moreton Bay - Peel Island - Notice board; beacon

Maritime Safety Queensland (AA340264)

Aus 236 [955/2013]

Substitute notice board for beacon 27° 29'.1 S 153° 21'.5 E

1196* AUSTRALIA - QUEENSLAND - Moreton Bay - Brisbane River - Entrance Channel to Eagle Farm Flats Reach - Light beacons

Maritime Safety Queensland Notices 904/2013, 918/2013 (AA707320, AA708446)

Aus 237 [NC 26/7/2013]Move light beacon to 27° 19'.22 S 153° 12'.22 E
27° 19'.202 S 153° 12'.235 E**Aus 238 [NE 31/5/2013]**Move light beacon to 27° 25'.90 S 153° 07'.19 E
27° 25'.901 S 153° 07'.194 E**1197* AUSTRALIA - QUEENSLAND - Pickersgill Reef - Light**

Australian Maritime Safety Authority (AA341955)

Aus 831 [1120/2012]Amend light to *Fl(2)10s 8m 11M* 15° 51'.4 S 145° 33'.3 E**1198* AUSTRALIA - QUEENSLAND - Plantation Creek to Cape Bowling Green - Light buoys; protected zone**
Maritime Safety Queensland Notices 911/2013, 919/2013 (AA707514, AA708449), Australian Hydrographic Service (AA708458)**Aus 826 [846/2013]**Insert isolated danger pillar light buoy, *Fl(2)5s*, with topmark 19° 18'.12 S 147° 37'.05 EMove protected zone, centred on to 19° 18'.1 S 147° 37'.1 E
19° 18'.27 S 147° 37'.32 E

Delete light buoy 19° 29'.2 S 147° 31'.8 E

Aus 827 [954/2013]Insert isolated danger pillar light buoy, *Fl(2)5s*, with topmark 19° 18'.12 S 147° 37'.05 EMove protected zone, centred on to 19° 18'.4 S 147° 37'.4 E
19° 18'.27 S 147° 37'.32 E

Delete light buoy 19° 29'.2 S 147° 31'.8 E

1199* AUSTRALIA - QUEENSLAND - Townsville - Infrastructure; depths; lights; port security limit*Former Notice - 819(T)/2013 is cancelled*

Port of Townsville Limited (DHDB 2524378, 2524601), Maritime Safety Queensland Notice 894/2013 (AA706055)

Aus 257 [31/2013]

Insert	accompanying block	19° 15'.0 S	146° 50'.0 E
	light, <i>Fl. Y. 2·5s</i>	19° 14'.643 S	146° 49'.937 E
	light, <i>Fl. Y. 2·5s</i>	19° 14'.603 S	146° 49'.883 E
	light, <i>Fl. Y. 2·5s</i>	19° 14'.563 S	146° 49'.827 E
	light, <i>Fl. Y. 2·5s</i>	19° 14'.515 S	146° 49'.757 E
Delete	port security limit with legend, between	19° 14'.81 S	146° 49'.93 E
		19° 14'.42 S	146° 50'.22 E
		19° 14'.45 S	146° 50'.27 E
		19° 14'.57 S	146° 50'.33 E
		19° 14'.77 S	146° 50'.33 E

1200* AUSTRALIA - CORAL SEA - Eastern Fields - Depths*Former Notice - 709(P)/2011 is cancelled*

LADS Flight (DHDB 2390126)

Aus 377 [746/2013]

Insert	accompanying block	10° 07'.0 S	145° 36'.0 E
--------	--------------------	-------------	--------------

Aus 379 [576/2013]

Insert	accompanying block	10° 07'.0 S	145° 40'.0 E
--------	--------------------	-------------	--------------

1201* PAPUA NEW GUINEA - Buka Passage to Empress Augusta Bay - Depths
LADS Flight (DHDB 2541011)

Aus 397 [227/2012]

Insert	depth, 1 ₈ m	5° 29'.10 S	154° 38'.46 E
Substitute	depth, 3 ₂ m, for depth, 6 ₁ m	5° 29'.8 S	154° 36'.4 E
Delete	depth, 2 ₉ m	5° 29'.1 S	154° 38'.6 E

Aus 399 [937/2012]

Insert	depth, 5 ₉ m	6° 12'.98 S	154° 55'.71 E
	depth, 2 ₆ m, enclosed by contour	6° 17'.64 S	155° 05'.41 E
	depth, 4 ₇ m, enclosed by contour	6° 16'.41 S	155° 05'.73 E
	depth, 5 ₆ m, enclosed by contour	6° 19'.66 S	155° 09'.94 E
	depth, 1 ₈ m	5° 29'.10 S	154° 38'.46 E
Substitute	depth, 7 ₇ m, for depth, 10 ₁ m	6° 11'.6 S	154° 53'.8 E
	depth, 7m, for depth, 8 ₈ m	6° 11'.1 S	154° 55'.3 E
	depth, 3 ₂ m, for depth, 6 ₁ m	5° 29'.8 S	154° 36'.4 E
	depth, 3 ₈ m, for depth, 7 ₆ m	6° 10'.0 S	154° 55'.9 E
	depth, 8 ₅ m, for depth, 12 ₅ m	6° 18'.8 S	155° 07'.2 E
Delete	depth, 7m	6° 13'.3 S	154° 55'.7 E
	depth, 3 ₇ m, and enclosing contour	6° 17'.7 S	155° 05'.6 E
	depth, 22 ₇ m	6° 19'.9 S	155° 10'.1 E
	depth, 2 ₉ m	5° 29'.1 S	154° 38'.6 E
	depth, 6 ₄ m, and enclosing contour	6° 16'.8 S	155° 05'.5 E

Aus 684 (inset, Approaches to Queen Carola Harbour) [1047/2013]

Insert	depth, 3 ₂ m, enclosed by contour	5° 29'.78 S	154° 36'.35 E
Delete	depth, 6 ₁ m, enclosed by contour	5° 29'.7 S	154° 36'.3 E

Aus 684 (plan, Empress Augusta Bay) [1047/2013]

Insert	depth, 5 ₉ m	6° 12'.98 S	154° 55'.71 E
	depth, 2 ₆ m, enclosed by contour	6° 17'.64 S	155° 05'.41 E
	depth, 4 ₇ m, enclosed by contour	6° 16'.41 S	155° 05'.73 E
	depth, 8 ₅ m, enclosed by contour	6° 18'.81 S	155° 07'.21 E
	depth, 5 ₆ m, enclosed by contour	6° 19'.66 S	155° 09'.94 E
Delete	depth, 7 ₅ m	6° 12'.9 S	154° 55'.6 E
	depth, 7m	6° 16'.5 S	155° 05'.6 E
	depth, 12 ₅ m	6° 18'.9 S	155° 07'.1 E

Aus 684 (plan, Buka Passage) [1047/2013]

Insert	depth, 2 ₃ m, enclosed by contour	5° 27'.073 S	154° 38'.784 E
	depth, 1 ₉ m, enclosed by contour	5° 29'.264 S	154° 38'.399 E
	depth, 0 ₉ m, enclosed by contour	5° 27'.684 S	154° 39'.837 E
	depth, 0 ₃ m, enclosed by contour	5° 27'.617 S	154° 39'.999 E
	depth, 1 ₈ m, enclosed by contour	5° 28'.173 S	154° 40'.038 E
	depth, 1 ₈ m, enclosed by contour	5° 29'.101 S	154° 38'.464 E
	depth, 3 ₂ m	5° 29'.782 S	154° 36'.349 E
Substitute	depth, 10 ₆ m, for depth, 15m	5° 28'.86 S	154° 37'.99 E
Delete	danger circle with legend, Rep (2006)	5° 27'.03 S	154° 38'.78 E
	depth, 21m	5° 27'.69 S	154° 39'.81 E
	depth, 3 ₅ m, and enclosing contour	5° 28'.19 S	154° 40'.00 E
	depth, 6 ₁ m	5° 29'.73 S	154° 36'.32 E

1202* PAPUA NEW GUINEA - Dawson Strait - Depths
 HMAS *Mermaid* and HMAS *Paluma* (DHDB 2537201)

Aus 518 [999/2013]

Insert	depth, 3 ₃ <i>m</i> , enclosed by contour	9° 42'.27 S	150° 57'.18 E
	depth, 4 ₆ <i>m</i> , enclosed by contour	9° 42'.32 S	150° 57'.68 E
	depth, 6 ₆ <i>m</i> , enclosed by contour	9° 43'.34 S	150° 50'.19 E
	depth, 4 ₈ <i>m</i> , enclosed by contour	9° 41'.26 S	150° 42'.93 E
	unsurveyed area limit, between	9° 42'.73 S	150° 42'.16 E
		9° 46'.99 S	150° 39'.44 E
	unsurveyed area limit, between	9° 44'.05 S	150° 42'.86 E
		9° 47'.73 S	150° 40'.60 E
	unsurveyed area limit, between	9° 41'.11 S	150° 56'.72 E
		9° 43'.59 S	150° 59'.99 E
Substitute	depth, 6 ₈ <i>m</i> , for depth, 9 ₉ <i>m</i>	9° 40'.0 S	150° 56'.6 E
	depth, 12 ₄ <i>m</i> , for depth, 19 ₆ <i>m</i>	9° 42'.8 S	150° 54'.5 E
	depth, 12 ₇ <i>m</i> , for depth, 19 ₅ <i>m</i>	9° 43'.8 S	150° 51'.6 E
	depth, 10 ₇ <i>m</i> , for depth, 13 ₅ <i>m</i>	9° 43'.7 S	150° 50'.7 E
Delete	shoal area, centred on	9° 42'.2 S	150° 57'.1 E
	shoal area, centred on	9° 42'.3 S	150° 57'.6 E
	unsurveyed area limit, between	9° 42'.7 S	150° 42'.2 E
		9° 44'.1 S	150° 42'.9 E
	unsurveyed area limit, between	9° 47'.0 S	150° 39'.4 E
		9° 47'.7 S	150° 40'.6 E
	unsurveyed area limit, between	9° 41'.1 S	150° 56'.7 E
		9° 43'.0 S	150° 55'.1 E
	unsurveyed area limit, between	9° 43'.6 S	151° 00'.0 E
		9° 44'.6 S	150° 57'.2 E
	shoal area, centred on	9° 41'.4 S	150° 42'.7 E
	shoal area with legend, Reef Rep (1945), centred on	9° 45'.5 S	150° 41'.7 E

1203* PAPUA NEW GUINEA - Pananiu Island - Pilot boarding place
 W Conlin (AA707213)

Aus 512 [634/2012]

Delete	pilot boarding place	10° 43'.5 S	152° 01'.5 E
--------	----------------------	-------------	--------------

1204* AUSTRALIA - NORTHERN TERRITORY - Bathurst Island - Depths northwestwards
 HS Blue (AA707545), HMAS Pirie (AA708490)

Aus 309 [1084/2013]

Insert	depth, 30 ₂ m, and extend contour N to enclose	11° 18'.56 S	129° 46'.52 E
	depth, 20 ₂ m, enclosed by contour	11° 19'.35 S	129° 47'.48 E
	depth, 1m, enclosed by contour	11° 35'.95 S	130° 03'.08 E

Delete	depth, 35m	11° 19'.2 S	129° 46'.8 E
--------	------------	-------------	--------------

Aus 4721 (INT 721) [633/2013]

Insert	depth, 20 ₂ m, enclosed by contour	11° 19'.4 S	129° 47'.5 E
--------	---	-------------	--------------

Substitute	depth, 1m, for depth, 5 ₁ m	11° 36'.0 S	130° 03'.0 E
------------	--	-------------	--------------

AX 00309T [1084/2013]

Insert	depth, 30 ₂ m, and extend contour N to enclose	11° 18'.56 S	129° 46'.52 E
	depth, 20 ₂ m, enclosed by contour	11° 19'.35 S	129° 47'.48 E
	depth, 1m, enclosed by contour	11° 35'.95 S	130° 03'.08 E

Delete	depth, 35m	11° 19'.2 S	129° 46'.8 E
--------	------------	-------------	--------------

AX 00309U [1084/2013]

Insert	depth, 30 ₂ m, and extend contour N to enclose	11° 18'.56 S	129° 46'.52 E
	depth, 20 ₂ m, enclosed by contour	11° 19'.35 S	129° 47'.48 E
	depth, 1m, enclosed by contour	11° 35'.95 S	130° 03'.08 E

Delete	depth, 35m	11° 19'.2 S	129° 46'.8 E
--------	------------	-------------	--------------

AX 04721U [633/2013]

Insert	depth, 20 ₂ m, enclosed by contour	11° 19'.4 S	129° 47'.5 E
--------	---	-------------	--------------

Substitute	depth, 1m, for depth, 5 ₁ m	11° 36'.0 S	130° 03'.0 E
------------	--	-------------	--------------

1205* AUSTRALIA - NORTHERN TERRITORY - Darwin - East Arm - Lit mooring buoys
 Darwin Port Corporation Notice 214/2013 (AA707537)

Aus 26 [1140/2013]

Insert	lit barrel mooring buoy, Fl.Y.2.5s	12° 29'.74 S	130° 55'.17 E
	lit barrel mooring buoy, Fl.Y.2.5s	12° 29'.74 S	130° 54'.88 E

Aus 28 [1048/2013]

Insert	lit yellow barrel mooring buoy, Fl.Y.2.5s	12° 29'.740 S	130° 55'.165 E
	lit yellow barrel mooring buoy, Fl.Y.2.5s	12° 29'.740 S	130° 54'.875 E

AX 00026T [1140/2013]

Insert	lit barrel mooring buoy, Fl.Y.2.5s	12° 29'.74 S	130° 55'.17 E
	lit barrel mooring buoy, Fl.Y.2.5s	12° 29'.74 S	130° 54'.88 E

1206* AUSTRALIA - WESTERN AUSTRALIA - Airlie Island - Light
 Australian Maritime Safety Authority (AA651379)

Aus 64 [546/2013]

Amend	light range to 17M	21° 19'.4 S	115° 10'.0 E
-------	--------------------	-------------	--------------

Aus 328 [692/2013]

Amend	light range to 17M	21° 19'.4 S	115° 10'.0 E
-------	--------------------	-------------	--------------

Aus 743 [752/2013]

Amend	light range to 17M	21° 19'.4 S	115° 10'.0 E
-------	--------------------	-------------	--------------

1207* AUSTRALIA - WESTERN AUSTRALIA - Mermaid Sound - Light buoys

MetOcean Engineers (AA706103, AA706104)

Aus 58 [689/2013]

Insert	special spherical light buoy, Q(5)Y.20s, without topmark	20° 33'.046 S	116° 43'.039 E
	special spherical light buoy, Q(5)Y.20s, without topmark	20° 32'.880 S	116° 43'.110 E

Delete	light buoy	20° 32'.82 S	116° 42'.97 E
	light buoy	20° 32'.94 S	116° 43'.03 E

Aus 59 [689/2013]

Insert	special spherical light buoy, Q(5)Y.20s, without topmark	20° 33'.046 S	116° 43'.039 E
	special spherical light buoy, Q(5)Y.20s, without topmark	20° 32'.880 S	116° 43'.110 E

Delete	light buoy	20° 32'.82 S	116° 42'.97 E
	light buoy	20° 32'.94 S	116° 43'.03 E

1208* AUSTRALIA - WESTERN AUSTRALIA - Wyndham - Nav aids

Department of Transport WA (AA543220, AA707551)

Aus 32 (plan, Approaches to Wyndham Wharf) [87/2013]

Insert	special spar light buoy, Fl.Y.3s, without topmark	15° 19'.72 S	128° 06'.41 E
--------	---	--------------	---------------

Move	raft	15° 20'.40 S	128° 06'.64 E
	to	15° 20'.17 S	128° 06'.63 E
	raft	15° 27'.17 S	128° 05'.58 E
	to	15° 27'.10 S	128° 05'.70 E
	raft	15° 19'.67 S	128° 06'.58 E
	to	15° 19'.67 S	128° 06'.50 E

Aus 32 (plan, Wyndham Wharf) [87/2013]

Move	raft	15° 27'.17 S	128° 05'.58 E
	to	15° 27'.10 S	128° 05'.70 E

1209* AUSTRALIA - VICTORIA - Port Fairy - Notice board; beacon

Port of Melbourne Corporation (AA334350)

Aus 141 (plan, Port Fairy) [1090/2013]

Substitute	notice board for beacon	38° 23'.33 S	142° 14'.54 E
------------	-------------------------	--------------	---------------

1210* AUSTRALIA - VICTORIA - Port Phillip - Mordialloc - Light buoys

Victorian Notice 164/2013 (AA708022), P Mosbey (AA708626)

Aus 143 [1091/2013]

Insert	special conical light buoy, Fl.Y.5s, with topmark	38° 01'.70 S	145° 04'.21 E
	special conical light buoy, Fl.Y.5s, with topmark	38° 00'.78 S	145° 03'.60 E

Aus 155 [1091/2013]

Insert	special conical light buoy, Fl.Y.5s, with topmark	38° 01'.700 S	145° 04'.212 E
	special conical light buoy, Fl.Y.5s, with topmark	38° 00'.777 S	145° 03'.604 E

1211* AUSTRALIA - VICTORIA - Port Phillip - Patterson River - Nav aids

Victorian Notice 159/2013 (AA708024), Parks Victoria (AA708424)

Aus 143 [1210/2013]

Insert	special beacon, with topmark	38° 04'.96 S	145° 07'.19 E
	special beacon, with topmark	38° 03'.99 S	145° 06'.91 E
	special beacon, with topmark	38° 03'.47 S	145° 06'.74 E

Delete	light beacon	38° 04'.5 S	145° 07'.1 E
--------	--------------	-------------	--------------

Aus 143 (plan, Patterson River) [1210/2013]

Insert	special beacon, with topmark	38° 04'.297 S	145° 07'.010 E
	special beacon, with topmark	38° 04'.143 S	145° 06'.960 E
	special beacon, with topmark	38° 03'.986 S	145° 06'.910 E
	special beacon, with topmark	38° 03'.805 S	145° 06'.851 E
	special beacon, with topmark	38° 03'.625 S	145° 06'.793 E
	starboard lateral light beacon, <i>Fl(3)G.5s</i> , with topmark	38° 04'.478 S	145° 07'.065 E
	port lateral light beacon, <i>Fl(3)R.5s</i> , with topmark	38° 04'.452 S	145° 07'.058 E

Delete	beacon	38° 03'.81 S	145° 06'.89 E
	beacon	38° 03'.98 S	145° 06'.96 E
	light beacon	38° 04'.46 S	145° 07'.06 E
	buoy	38° 04'.00 S	145° 07'.07 E
	buoy	38° 03'.99 S	145° 06'.87 E
	buoy	38° 04'.39 S	145° 06'.97 E
	buoy	38° 04'.50 S	145° 07'.02 E

1212* AUSTRALIA - VICTORIA - Port Phillip - Sorrento - Light buoys

Victorian Notice 163/2013 (AA708023), Parks Victoria, Sorrento Sailing Club Boat Club (AA708579)

Aus 158 [755/2013]

Insert	special conical light buoy, <i>Fl(4)Y.10s</i> , with topmark	38° 20'.592 S	144° 45'.322 E
	special conical light buoy, <i>Fl(4)Y.10s</i> , with topmark	38° 20'.438 S	144° 45'.417 E
	special conical light buoy, <i>Fl(4)Y.10s</i> , with topmark	38° 20'.275 S	144° 46'.022 E
	special conical light buoy, <i>Fl(4)Y.10s</i> , with topmark	38° 20'.380 S	144° 46'.547 E
	special conical light buoy, <i>Fl(4)Y.10s</i> , with topmark	38° 20'.215 S	144° 45'.487 E
	special conical light buoy, <i>Fl(4)Y.10s</i> , with topmark	38° 19'.883 S	144° 46'.120 E

Delete	depth, 8 ₄ m	38° 20'.45 S	144° 45'.47 E
	depth, 2 ₆ m	38° 20'.21 S	144° 45'.51 E
	depth, 3m	38° 20'.25 S	144° 45'.99 E
	depth, 1m	38° 20'.57 S	144° 45'.29 E

1213(T)/2013 AUSTRALIA - QUEENSLAND - Brisbane River - Shafston Reach - Harbour works

Former Notice - 760(T)/2013 is cancelled

Date - Until 31 July 2014

Maritime Safety Queensland Notices 562(T)/2013, 920(T)/2013 (AA686411, AA708740)

Harbour works associated with the reconstruction of the New Farm riverwalk are in progress.

A temporary 6 knot speed limit, marked by four special light buoys, Q.Y, exists between 27° 27'.83 S 153° 02'.15 E and 27° 27'.77 S 153° 02'.15 E; downstream to 27° 28'.37 S 153° 02'.38 E and 27° 28'.35 S 153° 02'.44 E.

Port lateral light buoys, *Fl.R.2-5s*, exist in positions 27° 27'.92 S 153° 02'.25 E and 27° 27'.87 S 153° 02'.21 E. The port lateral light buoy (27° 28'.09 S 153° 02'.32 E) has been repositioned to 27° 28'.10 S 153° 02'.30 E.

The barge MDT1803 and tugs are on site and will monitor VHF Ch 13. The barge will display appropriate lights and shapes and the offshore anchor lines will be marked by special light buoys.

Mariners are advised to navigate with caution in the area.

Chart temporarily affected - Aus 238**1214(T)/2013 AUSTRALIA - QUEENSLAND - Cape Bowling Green - Scientific instrument**

Former Notice - 926(T)/2011 is cancelled

Australian Institute of Marine Science (AA710432)

A subsurface scientific instrument, depth 10m, exists in position 19° 18'.25 S 147° 37'.23 E.

Chart temporarily affected - Aus 826 - Aus 827**1215(T)/2013 AUSTRALIA - QUEENSLAND - Cassady - Light buoy relit**

Former Notice - 910(T)/2013 is cancelled

Maritime Safety Queensland Notice 910/2013 (AA707513)

Cancel this notice on receipt.

Chart formerly affected - Aus 827 - Aus 828**1216(T)/2013 AUSTRALIA - QUEENSLAND - East Strait Island - Wreck**

Maritime Safety Queensland Notice 929(T)/2013 (AA710483)

A wreck exists in position 10° 29'.67 S 142° 26'.80 E.

Mariners are advised to navigate with caution in the area.

Chart temporarily affected - Aus 292 - Aus 293**1217(T)/2013 AUSTRALIA - QUEENSLAND - Great Sandy Strait - Tin Can Inlet - Wreck**

Maritime Safety Queensland Notice 908(T)/2013 (AA708493)

A stranded wreck, marked by a Q.Y light, exists in position 25° 51'.85 S 153° 02'.10 E.

Mariners are advised to navigate with caution in the area.

Chart temporarily affected - Aus 241

1218(T)/2013 AUSTRALIA - QUEENSLAND - Mooloolaba - Shoaling

Former Notice - 1103(T)/2013 is cancelled

Maritime Safety Queensland Notice 912(T)/2013 (AA707994)

A least depth of 2.5m exists within the main channel to Mooloolah River.

A least depth of 2.3m exists midway between light beacons No1 (26° 40'.81 S 153° 07'.94 E) and No3 (26° 40'.86 S 153° 08'.01 E).

Mariners are advised to navigate with caution in the area.

Chart temporarily affected - Aus 235

1219(T)/2013 AUSTRALIA - QUEENSLAND - Moreton Bay - Brisbane River - Depth information

Former Notice - 1161(T)/2013 is cancelled
Brisbane Port Corporation (AA707350)

Available depths and under keel clearances (UKC) at 15 November 2013:

<i>Berth</i>	<i>Metres</i>	<i>Remarks</i>
* Fisherman Islands No12	13.6	
Fisherman Islands No11	13.7	
Fisherman Islands No10	13.7	
* Fisherman Islands No9	14.1	
* Fisherman Islands No8	13.8	
Fisherman Islands No7	14.0	
Fisherman Islands No6	14.2	
Fisherman Islands No5	14.0	
Fisherman Islands No4	14.0	
* Fisherman Islands No3	13.8	
Fisherman Islands No2	14.0	
Fisherman Islands No1	13.7	
Fisherman Islands Grain and Woodchip	13.1	
Caltex Fisherman Islands	14.4	
* Fisherman Islands Coal	13.6	
Fisherman Islands General Purpose	10.9	
* BP Luggage Point	14.0	
Caltex Products	9.8	
Cement Australia Co Wharf	9.3	
BP Products	10.7	
Shell	10.9	
Pacific Terminals	10.9	
Incitec North	10.0	
* Incitec South	10.0	
Pinkenba 1	9.6	
Pinkenba 2	10.5	
Riverside Marina	-	
Sugar Terminal	9.8	
Cairncross Fitting Out Wharf	7.2	
Cairncross Breasting Wharf	4.9	
Brisbane Naval Wharf	4.3	
Maritime No1	9.0	
* Hamilton No4	10.3	
Hamilton No1	8.9	
Brisbane Cruise Ship Terminal	9.0	
	<i>Metres</i>	<i>UKC/Remarks</i>
<i>Moreton Bay:</i>		
North West Channel	15.0	2.3 (280m width)
North West Bypass Channel	9.2	1.6
Spitfire Channel	15.0	1.5 (600m width)
East Knoll Bypass Channel	6.0	1.4
East Channel	15.0	1.5 (300m width from western side)
Main Channel (M8 - M9)	10.0	1.8
Entrance Channel (E5 - EBCN)	14.7	1.5
<i>Brisbane River:</i>		
Outer Bar Cutting	14.0	1.46
Inner Bar Cutting	13.7	1.46
Fisherman Islands Swing Basin	13.7	1.3
River	9.1	0.6 / 0.9 (draft/tide)
Cement Australia Swing Basin	9.1	0.6 / 0.9 (draft/tide)
Pinkenba Swing Basin	9.1	0.6 / 0.9 (draft/tide)
Hamilton Swing Basin	9.0	0.6 / 0.9 (draft/tide)
* Indicates new or revised entry.		

Chart temporarily affected - Aus 235 - Aus 236 - Aus 237 - Aus 238 - Aus 814 - Aus 815

1220(T)/2013 AUSTRALIA - QUEENSLAND - Moreton Bay - Brisbane River - Entrance Channel - Light buoy

Former Notice - 341(T)/2013 is cancelled

Maritime Safety Queensland Notices 285(T)/2013, 918/2013 (AA664979, AA708446)

A special light buoy, *Fl.Y.2.5s*, exists in position 27° 19'.22 S 153° 12'.28 E.

Chart temporarily affected - Aus 237

1221(T)/2013 AUSTRALIA - QUEENSLAND - Shoalwater Bay - Live firing completed

Former Notice - 978(T)/2013 is cancelled

Maritime Safety Queensland Notice 677(T)/2013 (AA692719)

Cancel this notice on receipt.

Chart formerly affected - Aus 248 - Aus 367 - Aus 820 - Aus 822 - AX 00367S - AX 00820S - AX 00822S

1222(T)/2013 AUSTRALIA - QUEENSLAND - Shoalwater Bay - Live firing completed

Former Notice - 1060(T)/2013 is cancelled

Maritime Safety Queensland Notice 743(T)/2013 (AA697235)

Cancel this notice on receipt.

Chart formerly affected - Aus 260 - Aus 261 - Aus 367 - Aus 820 - Aus 822 - AX 00260T - AX 00260S - AX 00367S - AX 00820S - AX 00822S

1223(T)/2013 AUSTRALIA - QUEENSLAND - Weipa - Light beacon destroyed

Former Notice - 1165(T)/2013 is cancelled

Maritime Safety Queensland Notices 896(T)/2013; 915/2013 (AA706057, AA708092)

SC24 light beacon, *Q.R* (12° 40'.16 S 141° 49'.74 E), has been destroyed; a port lateral light buoy, *Q.R*, exists in situ.

Chart temporarily affected - Aus 4

1224(T)/2013 PAPUA NEW GUINEA - Kalibobo Point - Light unlit

National Maritime Safety Authority PNG Notice 50(T)/2013 (AA708456)

The light, *Fl.15s 28m 12M* (5° 12'.75 S 145° 48'.89 E), is unlit.

Chart temporarily affected - Aus 387 - Aus 646 - Aus 4060 (INT 60) - Aus 4603 (INT 603) - Aus 4622 (INT 622) - AX 04603U

1225(P)/2013 AUSTRALIA - NORTHERN TERRITORY - Darwin - East Arm - Light beacons

Darwin Port Corporation Notice 217(P)/2013 (AA708867)

Light beacons will be established as follows:

<i>Position</i>	<i>Characteristic</i>	<i>Remarks</i>
12° 29'.914 S 130° 53'.132 E	<i>Fl.R.2.5s</i>	MS2
12° 29'.927 S 130° 53'.276 E	<i>Fl.G.2.5s</i>	MS3
12° 29'.779 S 130° 53'.339 E	<i>Fl.R.2.5s</i>	MS4
12° 29'.807 S 130° 53'.417 E	<i>Fl.G.2.5s</i>	MS5
12° 29'.648 S 130° 53'.384 E	<i>Fl.R.2.5s</i>	MS6
12° 29'.662 S 130° 53'.443 E	<i>Fl.G.2.5s</i>	MS7
12° 29'.579 S 130° 53'.493 E	<i>Fl.G.2.5s</i>	MS9
12° 29'.432 S 130° 53'.837 E	<i>Fl.G.2.5s</i>	MS11

Chart which will be affected - Aus 28

1226(T)/2013 AUSTRALIA - WESTERN AUSTRALIA - Dampier - King Bay - Light buoy unlit; light buoy off station
Dampier Port Authority Notice 38/2013 (AA710497)

No13 light buoy (20° 37'.97 S 116° 45'.03 E) is unlit.

No17 light buoy (20° 37'.97 S 116° 45'.17 E) is off station.

Chart temporarily affected - Aus 59

1227(T)/2013 AUSTRALIA - WESTERN AUSTRALIA - North West Cape - Light altered

Former Notice - 661(T)/2013 is cancelled

Date - Until 28 February 2014

Australian Maritime Safety Authority Temporary ATH 14/2013 (AA679583, AA709149)

The light (21° 48'.37 S 114° 09'.61 E) has been temporarily altered to *Fl.10s 129m 21M*

Chart temporarily affected - Aus 328 - Aus 329 - Aus 744 - Aus 745 - Aus 4723 (INT 723) - Aus 4725 (INT 725) - AX 04723U

1228(T)/2013 AUSTRALIA - WESTERN AUSTRALIA - Port Hedland - Lights charted

Former Notices - 478(P)/2013, 609(P)/2013 are cancelled

Australian Hydrographic Service (AA708361), Port Hedland Port Authority (AA678191), BHP Billiton (AA669057)

Cancel this notice on receipt.

Chart formerly affected - Aus 54

1229(T)/2013 AUSTRALIA - WESTERN AUSTRALIA - Rosemary Island - Scientific instruments

Department of Transport WA Notice 183/2013 (AA708966)

Subsurface scientific instruments exist on the seabed in the following positions:

20° 27'.06 S 116° 35'.33 E

20° 27'.18 S 116° 35'.40 E

20° 27'.30 S 116° 35'.46 E

20° 27'.48 S 116° 35'.58 E.

Chart temporarily affected - Aus 57 - Aus 741 - Aus 742

1230(T)/2013 AUSTRALIA - WESTERN AUSTRALIA - Thevenard Island to Muiron Islands - Scientific instruments

Date - Until 31 May 2014

Department of Transport WA Notice 183/2013 (AA708966)

Subsurface scientific instruments exist on the seabed in the following positions:

21° 24'.45 S 114° 57'.58 E

21° 25'.50 S 114° 58'.20 E

21° 25'.73 S 114° 58'.31 E

21° 26'.28 S 114° 58'.61 E

21° 26'.81 S 114° 59'.00 E

21° 41'.10 S 114° 18'.90 E.

Chart temporarily affected - Aus 64 - Aus 743 - Aus 744

1231(T)/2013 AUSTRALIA - VICTORIA - Port Albert - Light relit

Former Notice - 132(T)/2012 is cancelled

Gippsland Ports (AA708364)

Note: the reduction in light range to 4M and the removal of the obscured sector have been incorporated in the new chart of Aus 181.

Cancel this notice on receipt.

Chart formerly affected - Aus 181 - Aus 357

1232(T)/2013 AUSTRALIA - VICTORIA - Port Phillip - St Leonards - Harbour works*Date* - Until 28 March 2014

Victorian Notice 169(T)/2013 (AA710411)

Harbour works associated with the remediation of the jetty (38° 10'.21 S 144° 43'.25 E) are in progress.

Mariners are advised to navigate with caution in the area.

Chart temporarily affected - Aus 143 - Aus 157 - Aus 158**1233(T)/2013 AUSTRALIA - VICTORIA - Warrnambool - Seismic survey southwards**

Origin Energy, WHL Energy Ltd (AA707727)

MV *Viking II*, with a 6100m towed array, and support vessels MV *Pacific Protector* and MV *Northern Star* are conducting a survey in an area bounded by the following positions:

39° 01'.39 S 142° 14'.96 E

39° 13'.94 S 142° 50'.95 E

38° 57'.68 S 142° 53'.83 E

38° 46'.03 S 142° 17'.65 E.

Chart temporarily affected - Aus 349 - Aus 787**1234(T)/2013 AUSTRALIA - VICTORIA - Warrnambool - Seismic survey southwards completed***Former Notice* - 1186(T)/2013 is cancelled

Origin Energy, WHL Energy Ltd (AA707727)

Cancel this notice on receipt.

Chart formerly affected - Aus 348 - Aus 349 - Aus 487 - Aus 787 - Aus 4728 (INT 728)**1235(T)/2013 AUSTRALIA - TASMANIA - D'Entrecasteaux Channel - Huon Point - Scientific instrument***Date* - Until 19 December 2013

Marine and Safety Tasmania M123/2013 (AA708829)

A scientific instrument, marked by a buoy, exists in position 43° 17'.50 S 147° 06'.65 E.

Chart temporarily affected - Aus 173 - Aus 795**1236(T)/2013 AUSTRALIA - TASMANIA - Macquarie Harbour - Marine farm***Former Notice* - 880(T)/2013 is cancelled

Marine and Safety Tasmania Notice M113/2013 (AA691397)

Cancel this notice on receipt.

Chart formerly affected - Aus 177**1237(T)/2013 AUSTRALIA - TASMANIA - Nubeena - Wreck**

Marine and Safety Tasmania Notice 120/2013 (AA708638, AA708599)

A stranded wreck exists in position 43° 06'.18 S 147° 44'.45 E.

Chart temporarily affected - Aus 171

1238(T)/2013 AUSTRALIA - TASMANIA - Wedge Bay - Marine farm

Date - Until 27 December 2013

Marine and Safety Tasmania Notice M122/2013 (AA708816)

Mariners are advised the marine farm has extended its boundaries as follows:

43° 06'.25 S 147° 41'.23 E

43° 06'.07 S 147° 42'.26 E

43° 06'.28 S 147° 42'.30 E

43° 06'.46 S 147° 41'.27 E.

Chart temporarily affected - Aus 171 - Aus 796

HYDROGRAPHIC REPORTS

<i>Locality</i>	<i>Report</i>	<i>Ship/Authority</i>	<i>Observer</i>
TASMANIA- Wedge Bay Norfolk Bay	Beacons and nomenclature		A Boon

NAVIGATION WARNINGS

The following radio messages have been received during the period to 28 November 2013. Signal copies of these messages may be destroyed. It is recommended that the reprint of Navigational Warnings should be kept in a file or a book divided into areas. Cancellation should be made on receipt of signals and reprints.

Rigs on location other than those listed in the latest Section III summary are the subject of Radio Navigational Warnings. Rigs in transit will not be the subject of Warnings.

AUSCOAST WARNING

278 Drill rig *Deepwater Frontier* in position 19° 47'.55 S 114° 38'.95 E. 2.5M clearance requested.
 279 Eight yellow mooring buoys *Fl.Y.5s* within 1M of 19° 54'.35 S 115° 16'.12 E. 2M clearance requested.
 280 Cancelled.
 281 Twelve yellow mooring buoys, *Fl.5s*, within 1M of 19° 54'.35 S 115° 16'.12 E. 2M clearance requested.
 282 Cancelled.
 283 Cancelled.
 284 8.5m motor cruiser sunk in Adolphus Channel in approximate position 10° 31'.5 S 142° 24'.0 E at 260600UTC Nov 2013.

NAVAREA X WARNINGS

062 Cancelled.
 063 Cancelled.

Navigational warnings in force as at 280001UTC NOV 13.**Auscoast**

2013 099 134 217 236 237 244 257 262 263 264 270 272 276 278 279 281 284

Navarea X

2013 037

Summary of mobile drilling rigs as at 280001UTC NOV 13.

<i>Name</i>	<i>Position</i>
Ensco 104	10° 09'.20 S 128° 49'.60 E
Noble Clyde Boudreaux	13° 49'.00 S 123° 19'.35 E
Jack Bates	13° 24'.59 S 122° 59'.02 E
Transocean Legend	13° 19'.00 S 122° 16'.45 E
Atwood Eagle	19° 42'.41 S 115° 52'.53 E
Ensco 109	12° 40'.30 S 124° 32'.30 E
Atwood Falcon	20° 04'.23 S 115° 11'.00 E
Atwood Osprey	20° 24'.50 S 114° 51'.00 E
Deepwater Frontier	19° 47'.55 S 114° 38'.95 E
Nan Hai 6	21° 32'.02 S 114° 09'.10 E

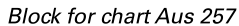
NAVAREA XIV WARNINGS

099 Cancelled.

Navarea XIV warnings in force as at 280001UTC NOV 13.

2013 098

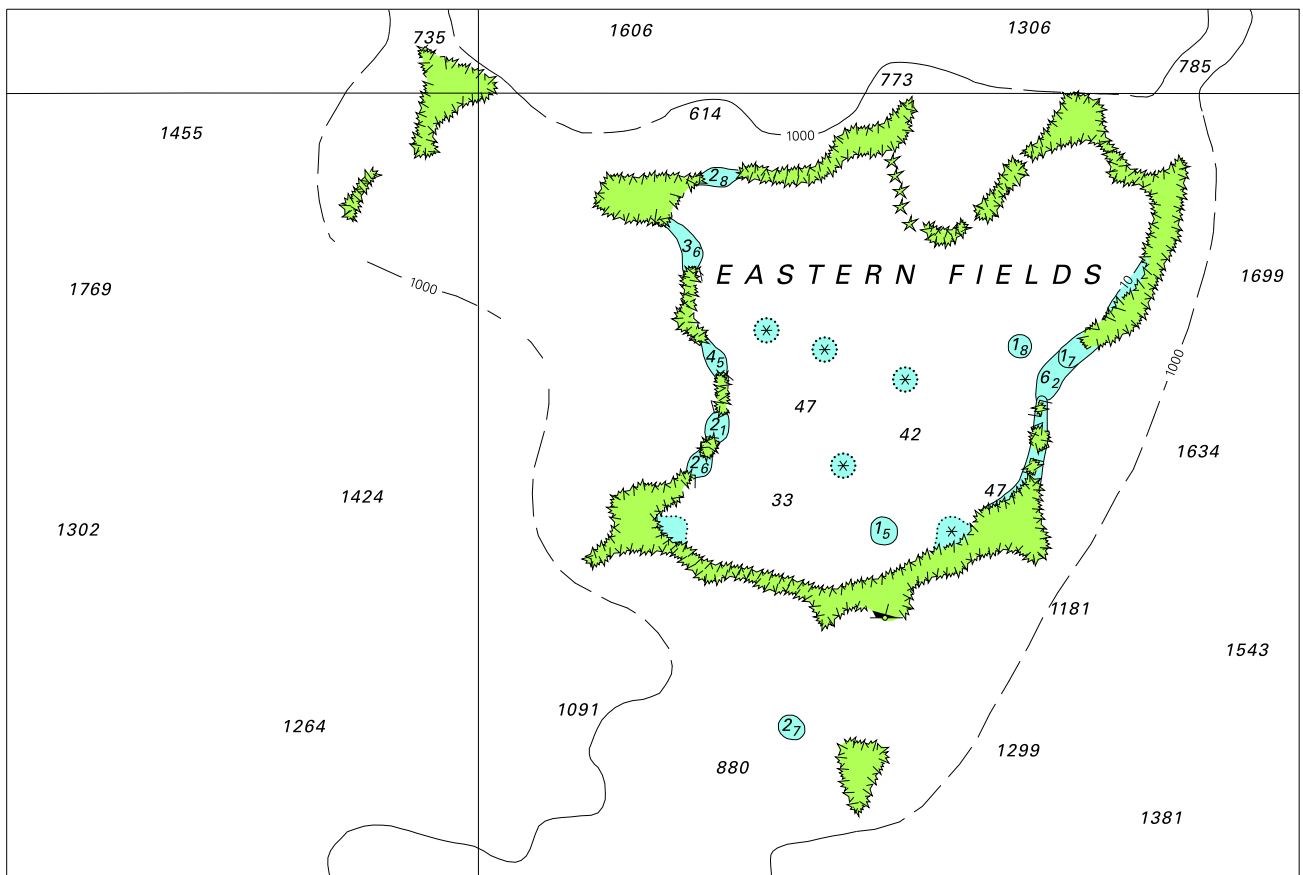
To accompany Australian Notice to Mariners 1199/2013



© Commonwealth of Australia 2013

(174.6 x 172.1mm)

To accompany Australian Notice to Mariners 1200/2013

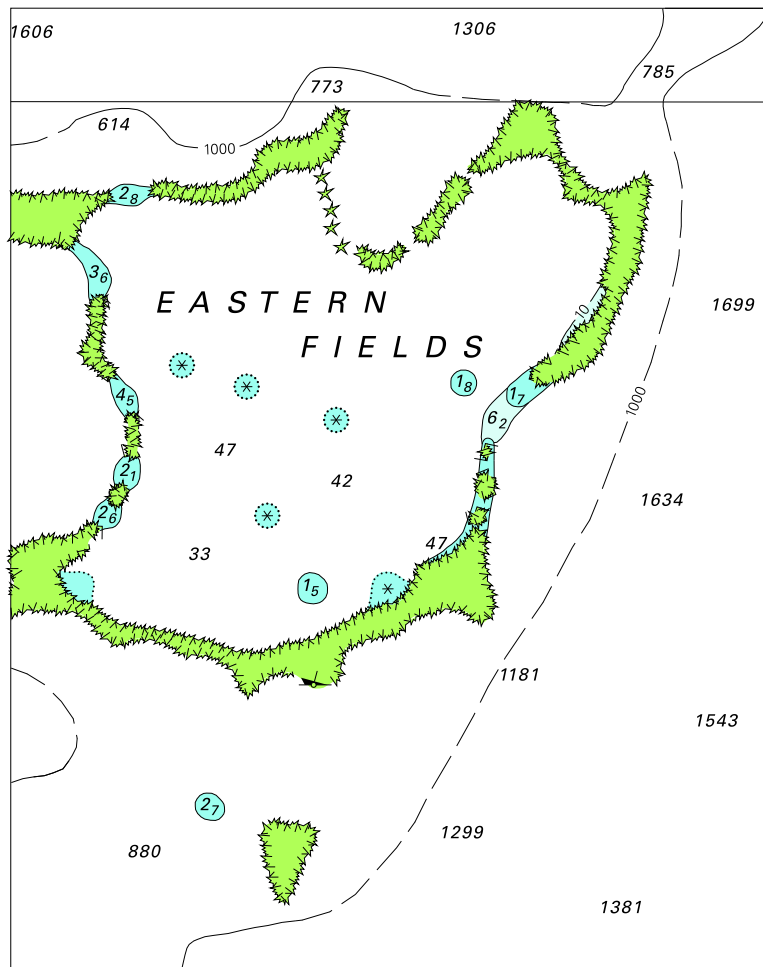


Block for chart Aus 377

©Commonwealth of Australia 2013

(171.0 x 115.0 mm)

To accompany Australian Notice to Mariners 1200/2013



©Commonwealth of Australia 2013

Block for chart Aus 379

(101.0 x 127.4 mm)