



15 November 2013

Edition 23

Australian Notices to Mariners are the authority for correcting Australian Charts and Publications

AUSTRALIAN NOTICES TO MARINERS

Notices 1127 - 1189



Published fortnightly by the Australian Hydrographic Service

Commodore B.K. BRACE RAN
Hydrographer of Australia

SECTIONS.

- I. Australian Notices to Mariners, including blocks and notes.
- II. Hydrographic Reports.
- III. Navigational Warnings.

SUPPLEMENTS.

- I. Tracings
- II. Cumulative List of Australian Notices to Mariners.
- III. Cumulative List of Temporary and Preliminary Australian Notices to Mariners.
- IV. Temporary and Preliminary Notices in force.
- V. Amendments to Admiralty List of Lights and Fog Signals (Vol K), Radio Signals (NP 281(2), 282, 283(2), 285, 286(4)) and Sailing Directions (NP 9, 13, 14, 15, 33, 34, 35, 36, 39, 44, 51, 60, 61, 62, 100, 136).

© Commonwealth of Australia 2013

This work is copyright. Apart from any use permitted under the Copyright Act 1968, no part may be reproduced by any process, adapted, communicated or commercially exploited without prior written permission from The Commonwealth represented by the Australian Hydrographic Service.

IMPORTANT NOTICE

This edition of Notices to Mariners includes all significant information affecting AHS products which the AHS has become aware of since the last edition. All reasonable efforts have been made to ensure the accuracy and completeness of the information, including third party information, on which these updates are based. The AHS regards third parties from which it receives information as reliable, however the AHS cannot verify all such information and errors may therefore exist. The AHS does not accept liability for errors in third party information.

GENERAL INSTRUCTIONS

The substance of these notices should be inserted on the charts affected.

Bearings are referred to the true compass and are reckoned clockwise from North; those relating to lights are given as seen by an observer from seaward. Positions quoted in permanent notices relate to the horizontal datum for the chart(s). When preliminary or temporary notices affect multiple charts, positions will be provided in relation to only one horizontal datum and that datum will be specified. When the multiple charts do not have a common horizontal datum, mariners will be required to adjust the position(s) for those charts not on the specified datum. The range quoted for a light is its nominal range. Depths are with reference to the chart datum of each chart. Heights are above mean high water springs or mean higher high water, as appropriate.

The capital letter (P) or (T) after the number of any notice denotes a preliminary or temporary notice respectively, which are contained separately at the end of the permanent notices. A star (*) adjacent to the number of a notice indicates that the notice is based on original information.

REPORTING OF DANGERS

Mariners are particularly requested to notify the AUSTRALIAN HYDROGRAPHIC SERVICE, Locked Bag 8801 Wollongong, NSW 2500 (Fax 02-4223 6599, e-mail Hydro.NTM@defence.gov.au or, alternatively by filling in and submitting the [Hydrographic Notes](#) forms located on the web site – www.hydro.gov.au), immediately on the discovery of new dangers or suspected dangers to navigation. For changes or defects in aids to navigation notify AusSAR (Fax 02-6230 6868 or email rccaus@amsa.gov.au).

AUTHORISED USE

Copies of Australian notices are available free of charge from the Australian Hydrographic Service (AHS) website (www.hydro.gov.au) and through the eNotices (email) service (www.hydro.gov.au/enotices/enotices.htm).

Individual Notices may be copied for the purpose of inserting Notice substance on official charts and publications. Paper copies may be printed by chart agents and distributed to customers on a cost recovery basis. Participating chart agents are listed on the AHS website as providing a 'Paper Notices to Mariners' service (www.hydro.gov.au/prodserv/distributors/distributors.htm). Copies of the notices may not be sold for profit without prior written agreement.

NUMERICAL INDEX OF NOTICES TO MARINERS

Edition No 23

Notices	Aus Chart, INT Chart, ENC Cell, AHP, BA Pubs
1127	Aus 54, 181, 182
1128	Amendment to Australian Notice to Mariners No 2
1129	Amendment to Australian National Tide Tables 2013 and 2014
1130	Amendment to Seafarers Handbook for Australian Waters AHP20
1131	Aus 200, 202, AX 00202T
1132	Aus 251, 252, 824
1133	Aus 253, 254
1134	Aus 821, 4620, 4621, 4635, INT 620, 621, 635, AX 04620U, 04621U
1135	Aus 252, 253
1136	Aus 235
1137	Aus 230
1138	Aus 515, 516
1139	Aus 714
1140	Aus 26, 722, AX 00026T, 00722T
1141	Aus 109
1142	Aus 115
1143	Aus 81
1144	Aus 52, 53
1145	Aus 748
1146	Aus 240, 815, 817
1147	Aus 125, 781
1148	Aus 485, 778
1149	Aus 169
1150	Aus 164
1151(T)	Aus 207, 208
1152(T)	Aus 255, 826
1153(T)	Aus 242
1154(T)	Aus 242
1155(T)	Aus 246, 819
1156(T)	Aus 240
1157(T)	Aus 250
1158(T)	Aus 6
1159(T)	Aus 250
1160(T)	Aus 250
1161(T)	Aus 235, 236, 237, 238, 814, 815
1162(T)	Aus 235, 236, 237, 238, 814, 815
1163(T)	Aus 236
1164(T)	Aus 235
1165(T)	Aus 4
1166(T)	Aus 24, 26, AX 00026T
1167(T)	Aus 24, 26, 28, AX 00026T
1168(T)	Aus 26, 29, 309, 315, 316, 318, 722, 724, 725, AX 00026T, 00309T, 00309U, 00315U, 00722T
1169(T)	Aus 312, 4721, INT 721, AX 00312U, 04721U
1170(T)	Aus 327
1171(T)	Aus 327
1172(T)	Aus 327, 741
1173(T)	Aus 327, 741
1174(T)	Aus 114, 117, AX 00117T
1175(T)	Aus 328, 4723, INT 723, AX 04723U
1176(T)	Aus 328, 329, 744
1177(T)	Aus 52, 53, 54
1178(T)	Aus 55, 326, 327, 740, 741
1179(T)	Aus 133
1180(T)	Aus 349, 787
1181(T)	Aus 143
1182(T)	Aus 154
1183(T)	Aus 154
1184(P)	Aus 143, 144, 158
1185(T)	Aus 155
1186(T)	Aus 348, 349, 487, 787, 4728, INT 728
1187(T)	Aus 164
1188(T)	Aus 177
1189(T)	Aus 177, 792

NUMERICAL INDEX OF CHARTS AFFECTED

Edition No 23

Aus Chart	Notices
Aus 4	1165(T)
Aus 6	1158(T)
Aus 24	1166(T), 1167(T)
Aus 26	1140, 1166(T), 1167(T), 1168(T)
Aus 28	1167(T)
Aus 29	1168(T)
Aus 52	1144, 1177(T)
Aus 53	1144, 1177(T)
Aus 54	1127, 1177(T)
Aus 55	1178(T)
Aus 81	1143
Aus 109	1141
Aus 114	1174(T)
Aus 115	1142
Aus 117	1174(T)
Aus 125	1147
Aus 133	1179(T)
Aus 143	1181(T), 1184(P)
Aus 144	1184(P)
Aus 154	1182(T), 1183(T)
Aus 155	1185(T)
Aus 158	1184(P)
Aus 164	1150, 1187(T)
Aus 169	1149
Aus 177	1188(T), 1189(T)
Aus 181	1127
Aus 182	1127
Aus 200	1131
Aus 202	1131
Aus 207	1151(T)
Aus 208	1151(T)
Aus 230	1137
Aus 235	1136, 1161(T), 1162(T), 1164(T)
Aus 236	1161(T), 1162(T), 1163(T)
Aus 237	1161(T), 1162(T)
Aus 238	1161(T), 1162(T)
Aus 240	1146, 1156(T)
Aus 242	1153(T), 1154(T)
Aus 246	1155(T)
Aus 250	1157(T), 1159(T), 1160(T)
Aus 251	1132
Aus 252	1132, 1135
Aus 253	1133, 1135
Aus 254	1133
Aus 255	1152(T)
Aus 309	1168(T)
Aus 312	1169(T)
Aus 315	1168(T)
Aus 316	1168(T)
Aus 318	1168(T)
Aus 326	1178(T)
Aus 327	1170(T), 1171(T), 1172(T), 1173(T), 1178(T)
Aus 328	1175(T), 1176(T)
Aus 329	1176(T)

Aus Chart	Notices
Aus 348	1186(T)
Aus 349	1180(T), 1186(T)
Aus 485	1148
Aus 487	1186(T)
Aus 515	1138
Aus 516	1138
Aus 714	1139
Aus 722	1140, 1168(T)
Aus 724	1168(T)
Aus 725	1168(T)
Aus 740	1178(T)
Aus 741	1172(T), 1173(T), 1178(T)
Aus 744	1176(T)
Aus 748	1145
Aus 778	1148
Aus 781	1147
Aus 787	1180(T), 1186(T)
Aus 792	1189(T)
Aus 814	1161(T), 1162(T)
Aus 815	1146, 1161(T), 1162(T)
Aus 817	1146
Aus 819	1155(T)
Aus 821	1134
Aus 824	1132, 1135
Aus 826	1152(T)
Aus 4620	1134
Aus 4621	1134
Aus 4635	1134
Aus 4721	1169(T)
Aus 4723	1175(T)
Aus 4728	1186(T)
AX 00026T	1140, 1166(T), 1167(T), 1168(T)
AX 00117T	1174(T)
AX 00202T	1131
AX 00309T	1168(T)
AX 00309U	1168(T)
AX 00312U	1169(T)
AX 00315U	1168(T)
AX 00722T	1140, 1168(T)
AX 04620U	1134
AX 04621U	1134
AX 04721U	1169(T)
AX 04723U	1175(T)

INT Chart	Notices
INT 620	1134
INT 621	1134
INT 635	1134
INT 721	1169(T)
INT 723	1175(T)
INT 728	1186(T)

1127 AUSTRALIA - Product
Australian Hydrographic Service (AA707066)

New Chart to be published shortly

<i>Chart</i>	<i>Title</i>	<i>Scale</i>	<i>Expected Publication Date</i>
Aus 181	Australia - South Coast - Victoria - Approaches to Corner Inlet and Port Albert	1:50 000	29 November 2013
	Insets:		
	McLoughlins Entrance	1:50 000	
	Shoal Inlet Entrance	1:50 000	

New Edition to be published shortly

<i>Chart</i>	<i>Title</i>	<i>Scale</i>	<i>Expected Publication Date</i>
Aus 54	Australia – North West Coast – Western Australia – Port Hedland	1:7 500	29 November 2013
Aus 182	Australia – South Coast – Plans in Victoria - South East Coast		29 November 2013
	Plans:		
	Lewis Channel	1:25 000	
	Approaches to Port Albert	1:15 000	
	Approaches to Barry Beach	1:12 500	
	Lakes Entrance	1:10 000	
	Port Albert	1:7 500	
	Port Welshpool	1:7 500	

For further details refer to the AHS website at www.hydro.gov.au for new edition and new chart stock arrival information.

When placing orders with a chart agent, mariners should advise whether their order pertains to the current edition or the new edition.

1128 AUSTRALIA - Product - Amendment to Australian Notice to Mariners No 2
Australian Hydrographic Service (AA705188)

Page 14

Amend Korea Ocean Development Co Ltd details to read:

Korea Ocean Development Co Ltd
7F-10F, KODCO Building
502 Jungang-daero, Dong-gu
Busan 601-804

Telephone (82 2) 701 9981
Fax (82 2) 701 9861
Email sales@chartkorea.com
Website www.chartkorea.com

C

1129 AUSTRALIA - Product - Amendment to Australian National Tide Tables 2013 and 2014
Australian Hydrographic Service (AA705264)

Page 338

Amend Boli Point (Port No 55876) To Chart Datum to 0.0

Page 406

Amend Large Island (Port No 62480) To Chart Datum to 0.0

1130 AUSTRALIA - Product - Amendment to Seafarers Handbook for Australian Waters AHP20
Great Barrier Reef Marine Park Authority (AA704519)

Chapter 6 - The Great Barrier Reef and Torres Strait

Substitute accompanying pages 69 to 75

Chapter 8 - Torres Strait and the Great Barrier Reef

Page 110 and 111 (8.8) - Pilotage - Torres Strait and the Great Barrier Reef

Substitute accompanying block

Page 113 (8.9) - Torres Strait and the Great Barrier Reef Shipping Routes

Substitute accompanying block

Page 115 (8.9.6) - Further Information on Shipping Routes

Substitute accompanying block

1131* AUSTRALIA - NEW SOUTH WALES - Port Jackson - Kirribilli Point - Obstruction removed
 Sydney Ports Corporation (AA705333)

Aus 200 [946/2013]

Substitute	depth, $14\frac{1}{2}m$, for depth, $11\frac{1}{2}m$, and enclosing danger circle with legend,	33° 51'.07 S	151° 13'.63 E
	Obstn		

Aus 202 [946/2013]

Substitute	depth, $14\frac{1}{2}m$, for depth, $11\frac{1}{2}m$, and enclosing danger circle with legend,	33° 51'.07 S	151° 13'.63 E
	Obstn		

AX 00202T [946/2013]

Substitute	depth, $14\frac{1}{2}m$, for depth, $11\frac{1}{2}m$, and enclosing danger circle with legend,	33° 51'.07 S	151° 13'.63 E
	Obstn		

1132* AUSTRALIA - QUEENSLAND - Coppersmith Rock - Light
 Australian Hydrographic Service (AA75159)

Aus 251 [1241/2012]

Amend	elevation to $15m$	20° 35'.9 S	149° 07'.0 E
-------	--------------------	-------------	--------------

Aus 252 [997/2013]

Amend	elevation to $15m$	20° 35'.9 S	149° 07'.0 E
-------	--------------------	-------------	--------------

Aus 824 [1242/2012]

Amend	light range to $10M$	20° 35'.9 S	149° 07'.0 E
-------	----------------------	-------------	--------------

1133* AUSTRALIA - QUEENSLAND - Fitzalan Passage - Depths
 Maritime Safety Queensland (DHDB 2482359)

Aus 253 [997/2013]

Insert	depth, $0\frac{1}{2}m$, enclosed by contour	20° 18'.974 S	148° 55'.822 E
	depth, $4\frac{1}{2}m$, enclosed by contour	20° 18'.863 S	148° 56'.044 E

Delete	depth, $5\frac{1}{2}m$	20° 18'.84 S	148° 56'.04 E
--------	------------------------	--------------	---------------

Aus 254 (plan, Fitzalan Passage) [997/2013]

Insert	depth, $0\frac{1}{2}m$, enclosed by contour	20° 18'.974 S	148° 55'.822 E
	depth, $4\frac{1}{2}m$, enclosed by contour	20° 18'.863 S	148° 56'.044 E

Delete	depth, $6\frac{1}{2}m$	20° 18'.98 S	148° 55'.80 E
	depth, $5\frac{1}{2}m$	20° 18'.84 S	148° 56'.04 E

1134* AUSTRALIA - QUEENSLAND - Hydrographers Passage - Creal Reef to Little Bugatti Reef - Lights

Australian Hydrographic Service (AA77198, AA77200)

Aus 821 [736/2011]

Amend	light range to 17/13M	20° 01'.2 S	150° 15'.4 E
	light range to 20M	20° 31'.9 S	150° 22'.7 E

Aus 4620 (INT 620) [800/2013]

Amend	light range to 17/13M	20° 01'.2 S	150° 15'.4 E
	light range to 20M	20° 31'.9 S	150° 22'.7 E

Aus 4621 (INT 621) [1044/2013]

Amend	light range to 17/13M	20° 01'.2 S	150° 15'.4 E
	light range to 20M	20° 31'.9 S	150° 22'.7 E

Aus 4635 (INT 635) [495/2013]

Amend	light range to 17/13M	20° 01'.2 S	150° 15'.4 E
	light range to 20M	20° 31'.9 S	150° 22'.7 E

AX 04620U [800/2013]

Amend	light range to 17/13M	20° 01'.2 S	150° 15'.4 E
	light range to 20M	20° 31'.9 S	150° 22'.7 E

AX 04621U [1044/2013]

Amend	light range to 17/13M	20° 01'.2 S	150° 15'.4 E
	light range to 20M	20° 31'.9 S	150° 22'.7 E

1135* AUSTRALIA - QUEENSLAND - Pioneer Rocks - Light beacon*Former Notice - 759(T)/2011 is cancelled*

Maritime Safety Queensland Notice 852/2013 (AA703967)

Aus 252 [1132/2013]

Move	light beacon	20° 13'.60 S	148° 45'.46 E
	to	20° 13'.61 S	148° 45'.43 E

Aus 253 [1133/2013]

Move	light beacon	20° 13'.60 S	148° 45'.46 E
	to	20° 13'.610 S	148° 45'.433 E

1136* AUSTRALIA - QUEENSLAND - Pumicestone Channel - Beacon

Maritime Safety Queensland Notice 862/2013 (AA704510, AA705532)

Aus 235 [955/2013]

Insert	beacon with starboard lateral topmark	26° 57'.00 S	153° 05'.18 E
Delete	beacon	26° 57'.0 S	153° 05'.2 E

1137* AUSTRALIA - QUEENSLAND - The Broadwater - Nav aids

Maritime Safety Queensland Notice 857/2013, 867/2013 (AA703961, AA704590)

Aus 230 [951/2013]

Move	beacon	27° 55'.60 S	153° 24'.18 E
	to	27° 55'.592 S	153° 24'.186 E
	light beacon	27° 56'.19 S	153° 24'.54 E
	to	27° 56'.289 S	153° 24'.576 E
	light beacon	27° 56'.46 S	153° 25'.13 E
	to	27° 56'.476 S	153° 25'.095 E

1138* PAPUA NEW GUINEA - Trobriand Islands - Depths
Australian Hydrographic Service (AA690606)

Aus 515 [888/2013]

Insert	accompanying block	8° 37'.0 S	151° 15'.0 E
--------	--------------------	------------	--------------

Aus 516 [888/2013]

Insert	accompanying block A	8° 30'.0 S	151° 16'.0 E
	accompanying block B	8° 30'.0 S	151° 05'.0 E

1139* AUSTRALIA - NORTHERN TERRITORY - Bowen Strait - Depth
SV *Naika* (DHDB 2513377)

Aus 714 [324/2012]

Insert	depth, 17m, semi enclosed to W by contour	11° 12'.65 S	132° 29'.79 E
--------	---	--------------	---------------

1140* AUSTRALIA - NORTHERN TERRITORY - Darwin - Wrecks
HMAS *Gascoyne* (AA705325, AA705326)

Aus 26 [1048/2013]

Insert	depth, 12m, enclosed by danger circle with legend, <i>Wk</i>	12° 28'.44 S	130° 48'.08 E
--------	--	--------------	---------------

Delete	wreck	12° 28'.4 S	130° 48'.0 E
	wreck	12° 28'.5 S	130° 48'.0 E
	depth, 17m	12° 28'.5 S	130° 48'.2 E

Aus 722 [958/2013]

Insert	depth, 12m, enclosed by danger circle with legend, <i>Wk</i>	12° 28'.44 S	130° 48'.08 E
--------	--	--------------	---------------

Delete	wreck	12° 28'.4 S	130° 48'.0 E
	wreck	12° 28'.5 S	130° 48'.0 E

AX 00026T [1048/2013]

Insert	depth, 12m, enclosed by danger circle with legend, <i>Wk</i>	12° 28'.44 S	130° 48'.08 E
--------	--	--------------	---------------

Delete	wreck	12° 28'.4 S	130° 48'.0 E
	wreck	12° 28'.5 S	130° 48'.0 E
	depth, 17m	12° 28'.5 S	130° 48'.2 E

AX 00722T [958/2013]

Insert	depth, 12m, enclosed by danger circle with legend, <i>Wk</i>	12° 28'.44 S	130° 48'.08 E
--------	--	--------------	---------------

Delete	wreck	12° 28'.4 S	130° 48'.0 E
	wreck	12° 28'.5 S	130° 48'.0 E

1141* AUSTRALIA - WESTERN AUSTRALIA - Albany - Bramble Rock - Light buoy
Albany Port Authority (AA705747)

Aus 109 [1086/2013]

Substitute	west cardinal spar light buoy, Q(9)15s, with topmark for beacon	35° 02'.53 S	117° 54'.76 E
------------	---	--------------	---------------

1142* AUSTRALIA - WESTERN AUSTRALIA - Bunbury - Rocky Point - Light buoy
Department of Transport WA Notice 150/2013 (AA703111)

Aus 115 [449/2013]

Insert	special spar light buoy, Q.Y, without topmark	33° 19'.56 S	115° 37'.36 E
--------	---	--------------	---------------

Aus 115 (plan, Port of Bunbury) [449/2013]

Insert	special spar light buoy, Q.Y, without topmark	33° 19'.562 S	115° 37'.356 E
--------	---	---------------	----------------

1143* AUSTRALIA - WESTERN AUSTRALIA - Champion Bay - Bluff Point - Light beacon

Australian Hydrographic Service (AA705537)

Aus 81 [642/2013]

Move	light beacon	28° 44'.79 S	114° 36'.42 E
	to	28° 44'.756 S	114° 36'.538 E

1144* AUSTRALIA - WESTERN AUSTRALIA - Port Hedland - Light buoy

Port Hedland Port Authority (AA704562)

Aus 52 [545/2013]

Insert	special pillar light buoy, <i>Fl. Y. 3s</i> , without topmark	20° 12'.592 S	118° 33'.727 E
--------	---	---------------	----------------

Delete	light buoy	20° 12'.61 S	118° 33'.74 E
--------	------------	--------------	---------------

Aus 53 [545/2013]

Insert	special pillar light buoy, <i>Fl. Y. 3s</i> , without topmark	20° 12'.59 S	118° 33'.73 E
--------	---	--------------	---------------

Delete	light buoy	20° 12'.6 S	118° 33'.7 E
--------	------------	-------------	--------------

1145* AUSTRALIA - WESTERN AUSTRALIA - Shark Bay - Herald Loop - Beacon; foul ground

Department of Transport WA (AA705633, AA705634)

Aus 748 [404/2011]

Substitute	# for beacon	25° 58'.5 S	114° 04'.4 E
------------	--------------	-------------	--------------

1146* AUSTRALIA - WESTERN AUSTRALIA - Wide Bay Harbour - Middle Bank - Depth

Maritime Safety Queensland (DHDB 2523046)

Aus 240 [953/2013]

Insert	depth, <i>1₁m</i> , enclosed by contour	25° 47'.50 S	153° 06'.47 E
--------	--	--------------	---------------

Delete	depth, <i>1₆m</i> , and enclosing contour	25° 47'.7 S	153° 06'.8 E
--------	--	-------------	--------------

Aus 815 [799/2013]

Insert	depth, <i>1₁m</i> , enclosed by contour	25° 47'.50 S	153° 06'.47 E
--------	--	--------------	---------------

Delete	depth, <i>2₅m</i>	25° 47'.4 S	153° 06'.4 E
--------	------------------------------	-------------	--------------

Aus 817 [971/2012]

Insert	depth, <i>1₁m</i> , enclosed by contour	25° 47'.50 S	153° 06'.47 E
--------	--	--------------	---------------

Delete	depth, <i>2₅m</i>	25° 47'.4 S	153° 06'.4 E
--------	------------------------------	-------------	--------------

1147* AUSTRALIA - SOUTH AUSTRALIA - Glenelg - Light beacons; lights

Department of Planning, Transport and Infrastructure SA Notice 30/2013 (AA703959, AA703597)

Aus 125 (plan, Glenelg) [1082/2012]

Insert	north cardinal light beacon, <i>Q</i> , with topmark	34° 58'.658 S	138° 30'.212 E
	south cardinal light beacon, <i>Q(6)+LFl. 15s</i> , with topmark	34° 58'.844 S	138° 30'.220 E

Delete	light with sector and legends	34° 58'.66 S	138° 30'.21 E
	light with sector and legends	34° 58'.84 S	138° 30'.22 E

Aus 781 [389/2013]

Amend	light to <i>Q</i>	34° 58'.7 S	138° 30'.2 E
	light to <i>Q(6)+LFl. 15s</i>	34° 58'.8 S	138° 30'.2 E

1148* AUSTRALIA - SOUTH AUSTRALIA - Spencer Gulf - Port Broughton - Light range

Department of Planning, Transport and Infrastructure SA (AA704564)

Aus 485 [694/2013]

Amend	light range to 5M	33° 33'.6 S	137° 52'.7 E
-------	-------------------	-------------	--------------

Aus 778 [586/2013]

Amend	light range to 5M	33° 33'.6 S	137° 52'.7 E
-------	-------------------	-------------	--------------

1149* AUSTRALIA - TASMANIA - Blackman Bay - Marine farms

Department of Primary Industries, Parks, Water and Environment TAS (DHDB 2351255)

Aus 169 (plan, Blackman Bay) [897/2013]

Insert	accompanying block A	42° 51'.5 S	147° 51'.5 E
	accompanying block B	42° 53'.5 S	147° 53'.0 E

1150* AUSTRALIA - TASMANIA - Devonport - Infrastructure; lights

Devonport City Council (AA700134)

Aus 164 (plan, Devonport) [857/2013]

Insert	accompanying block	41° 11'.0 S	146° 22'.0 E
--------	--------------------	-------------	--------------

1151(T)/2013 AUSTRALIA - NEW SOUTH WALES - Newcastle - Depth information

Former Notice - 1096(T)/2013 is cancelled
Newcastle Port Corporation (AA706142)

Available depths as at 11 November 2013:

<i>Berth</i>	<i>Metres</i>	<i>Remarks</i>
Eastern Basin 1	11.5	
Eastern Basin 2 North of Ch 450	11.6	
Eastern Basin 2 South of Ch 450	11.5	
Western Basin 3	11.6	
Western Basin 4	11.6	
Channel Berth	9.7	
Dyke 1	12.8	
Dyke 2	12.7	
Dyke 4	16.5	
Dyke 5	16.4	
Dyke 6	5.0	
Mayfield 4 Ch 27 to 266	11.4	
BHP Wharf 6 to Ch 1050	7.1	
Kooragang 2	11.6	
Kooragang 2 North Dolphin Ch 182 to 243	11.6	
* Kooragang 2 South Dolphin Ch -92 to 00	11.3	
Kooragang 3 Ch -40 to 00	11.8	
Kooragang 3 Ch 00 to 220	13.1	
Kooragang 4	16.5	
Kooragang 5	16.5	
* Kooragang 6	16.5	
Kooragang 7	16.2	
Kooragang 8	16.3	
Kooragang 9	16.3	
Kooragang 10	16.3	
Throsby 1	8.4	
Carrington Wharf		To be sounded as and when required
Foreshore Park Berth	5.9	
Elgo Wharf		To be sounded as and when required
<i>Channels</i>		
Entrance Approach	17.7	
Entrance Channel (18.0m)	18.0	
Entrance Channel (17.4m)	17.4	
Entrance Channel (16.8m)	16.8	
Entrance Channel (16.2m)	16.2	
Entrance Channel to Horseshoe	15.2	
Horseshoe	15.0	
Steelworks Channel to Swinging Basin	15.0	
Swinging Basin	14.8	
Hunter River South Arm (Kooragang 6 to buoy 16)	15.0	
Hunter River South Arm (buoy 16 to buoy 20)	15.0	
Basin Cutting	12.6	
Basin Area to Eastern & Western Basin Berths	12.3	
Basin Area to 1 Throsby	9.4	
Stockton Crossing	3.6	
* Indicates new or revised entry.		

Chart temporarily affected - Aus 207 - Aus 208**1152(T)/2013 AUSTRALIA - QUEENSLAND - Abbot Bay - Clark Shoal - Light beacon relit**

Former Notice - 56(T)/2012 is cancelled
Maritime Safety Queensland 24(T)/2012 (AA575902)

Cancel this notice on receipt.

Chart formerly affected - Aus 255 - Aus 826

1153(T)/2013 AUSTRALIA - QUEENSLAND - Bundaberg - Burnett River - Jetty demolished; light removed*Former Notice* - 600(T)/2013 is cancelled

Maritime Safety Queensland Notice 450/2013 (AA677280)

Cancel this notice on receipt.

Chart formerly affected - Aus 242**1154(T)/2013 AUSTRALIA - QUEENSLAND - Burnett River - Wreck salvaged***Former Notice* - 262(T)/2013 is cancelled

Maritime Safety Queensland Notice 204(T)/2013 (AA655691)

Cancel this notice on receipt.

Chart formerly affected - Aus 242**1155(T)/2013 AUSTRALIA - QUEENSLAND - Ethel Rocks - Wreck eastwards dispersed***Former Notice* - 743(T)/2012 is cancelled

Maritime Safety Queensland (AA706391)

Cancel this notice on receipt.

Chart formerly affected - Aus 246 - Aus 819**1156(T)/2013 AUSTRALIA - QUEENSLAND - Great Sandy Strait - Tin Can Inlet - Snapper Creek - Wreck**

Maritime Safety Queensland Notice 876(T)/2013 (AA705816)

A stranded wreck exists in position 25° 54'.44 S 153° 00'.06 E.

Mariners are advised to navigate with caution in the area.

Chart temporarily affected - Aus 240**1157(T)/2013 AUSTRALIA - QUEENSLAND - Hay Point - Diving operations completed***Former Notice* - 762(T)/2013 is cancelled

Maritime Safety Queensland Notice 556(T)/2013 (AA686377)

Cancel this notice on receipt.

Chart formerly affected - Aus 250**1158(T)/2013 AUSTRALIA - QUEENSLAND - Karumba - Dredging operations completed***Former Notice* - 763(T)/2013 is cancelled

Maritime Safety Queensland Notice 572(T)/2013 (AA686339)

Cancel this notice on receipt.

Chart formerly affected - Aus 6

1159(T)/2013 AUSTRALIA - QUEENSLAND - Mackay - Depth information*Former Notice* - 1017(T)/2013 is cancelled

Maritime Safety Queensland Notice 888(T)/2013 (AA705666)

Available depths as at 6 November 2013:

<i>Remarks</i>	<i>Metres</i>
* Entrance Channel	8.6
* Swing Basin	8.5
* Berth No 1	11.0
* Berth No 3	12.5
* Berth No 3 & 4 composite	12.5
* Berth No 4	10.8
* Berth No 5	12.5
* Indicates revised entry.	

Chart temporarily affected - Aus 250**1160(T)/2013 AUSTRALIA - QUEENSLAND - Mackay - Shoaling removed***Former Notice* - 1102(T)/2013 is cancelled

Maritime Safety Queensland Notice 897/2013 (AA706207)

Cancel this notice on receipt.

Chart formerly affected - Aus 250

1161(T)/2013 AUSTRALIA - QUEENSLAND - Moreton Bay - Brisbane River - Depth information

Former Notice - 1105(T)/2013 is cancelled

Brisbane Port Corporation (AA705616)

Available depths and under keel clearances (UKC) at 6 November 2013:

<i>Berth</i>	<i>Metres</i>	<i>Remarks</i>
Fisherman Islands No12	13.8	
Fisherman Islands No11	13.7	
* Fisherman Islands No10	13.7	
Fisherman Islands No9	13.9	
Fisherman Islands No8	14.0	
Fisherman Islands No7	14.0	
Fisherman Islands No6	14.2	
Fisherman Islands No5	14.0	
Fisherman Islands No4	14.0	
Fisherman Islands No3	14.0	
Fisherman Islands No2	14.0	
Fisherman Islands No1	13.7	
Fisherman Islands Grain and Woodchip	13.1	
* Caltex Fisherman Islands	14.4	
Fisherman Islands Coal	14.0	
* Fisherman Islands General Purpose	10.9	
BP Luggage Point	14.3	
* Caltex Products	9.8	
Cement Australia Co Wharf	9.3	
* BP Products	10.7	
Shell	10.9	
* Pacific Terminals	10.9	
Incitec North	10.0	
* Incitec South	10.1	
* Pinkenba 1	9.6	
* Pinkenba 2	10.5	
Riverside Marina	-	
Sugar Terminal	9.8	
Cairncross Fitting Out Wharf	7.2	
Cairncross Breasting Wharf	4.9	
Brisbane Naval Wharf	4.3	
Maritime No1	9.0	
Hamilton No4	10.1	
* Hamilton No1	8.9	
* Brisbane Cruise Ship Terminal	9.0	
	<i>Metres</i>	<i>UKC/Remarks</i>
<i>Moreton Bay:</i>		
North West Channel	15.0	2.3 (280m width)
North West Bypass Channel	9.2	1.6
Spitfire Channel	15.0	1.5 (600m width)
East Knoll Bypass Channel	6.0	1.4
East Channel	15.0	1.5 (300m width from western side)
Main Channel (M8 - M9)	10.0	1.8
Entrance Channel (E5 - EBCN)	14.7	1.5
<i>Brisbane River:</i>		
Outer Bar Cutting	14.0	1.46
* Inner Bar Cutting	13.7	1.46
* Fisherman Islands Swing Basin	13.7	1.3
River	9.1	0.6 / 0.9 (draft/tide)
Cement Australia Swing Basin	9.1	0.6 / 0.9 (draft/tide)
Pinkenba Swing Basin	9.1	0.6 / 0.9 (draft/tide)
Hamilton Swing Basin	9.0	0.6 / 0.9 (draft/tide)
* Indicates new or revised entry.		

Chart temporarily affected - Aus 235 - Aus 236 - Aus 237 - Aus 238 - Aus 814 - Aus 815

1162(T)/2013 AUSTRALIA - QUEENSLAND - Moreton Bay - Brisbane River - Nav aids restored*Former Notice* - 145(T)/2013 is cancelled

Maritime Safety Queensland Notice 76(T)/2013 (AA649220)

Cancel this notice on receipt.

Chart formerly affected - Aus 235 - Aus 236 - Aus 237 - Aus 238 - Aus 814 - Aus 815**1163(T)/2013 AUSTRALIA - QUEENSLAND - Moreton Bay - Coochiemudlo Island - Harbour works completed***Former Notice* - 1021(T)/2013 is cancelled

Maritime Safety Queensland Notice 764(T)/2013 (AA698739)

Cancel this notice on receipt.

Chart formerly affected - Aus 236**1164(T)/2013 AUSTRALIA - QUEENSLAND - Pumicestone Channel - Obstruction***Former Notice* - 1024(T)/2013 is cancelled

Maritime Safety Queensland Notice 794(T)/2013 (AA699938)

Note: update applied to ENC only

Cancel this notice on receipt.

Chart formerly affected - Aus 235**1165(T)/2013 AUSTRALIA - QUEENSLAND - Weipa - Light beacon destroyed**

Maritime Safety Queensland Notice 896(T)/2013 (AA706057)

SC24 light beacon, Q.R (12° 40'.16 S 141° 49'.74 E), has been destroyed; a special buoy exists in situ.

Chart temporarily affected - Aus 4**1166(T)/2013 AUSTRALIA - NORTHERN TERRITORY - Darwin - Dredging operations completed***Former Notice* - 987(T)/2013 is cancelled

Darwin Port Corporation Notice 200(T)/2013 (AA705460)

Cancel this notice on receipt.

Chart formerly affected - Aus 24 - Aus 26 - AX 00026T**1167(T)/2013 AUSTRALIA - NORTHERN TERRITORY - Darwin - Scientific instruments recovered***Former Notice* - 984(T)/2013 is cancelled

Darwin Port Corporation Notice 200(T)/2013 (AA705460)

Cancel this notice on receipt.

Chart formerly affected - Aus 24 - Aus 26 - Aus 28 - AX 00026T**1168(T)/2013 AUSTRALIA - NORTHERN TERRITORY - Darwin - Live firing completed***Former Notice* - 1111(T)/2013 is cancelled

RAAF (AA693050)

Cancel this notice on receipt.

Chart formerly affected - Aus 26 - Aus 29 - Aus 309 - Aus 315 - Aus 316 - Aus 318 - Aus 722 - Aus 724 - Aus 725 - AX 00026T - AX 00309T - AX 00309U - AX 00315U - AX 00722T

1169(T)/2013 AUSTRALIA - TIMOR SEA - Sahul Banks - Drill rig

Australian Maritime Safety Authority Auscoast Warning 276/2013 (AA706846)

Drill rig *Stena Clyde* is conducting drilling operations in position 10° 38'.62 S 126° 09'.62 E.

Chart temporarily affected - Aus 312 - Aus 4721 (INT 721) - AX 00312U - AX 04721U

1170(T)/2013 AUSTRALIA - WESTERN AUSTRALIA - Dampier Archipelago - Scientific instruments northwestwards recovered

Former Notice - 658(T)/2013 is cancelled

MetOcean Engineers (AA706103, AA706104)

Cancel this notice on receipt.

Chart formerly affected - Aus 327

1171(T)/2013 AUSTRALIA - WESTERN AUSTRALIA - Dampier Archipelago - Scientific instruments northwestwards

Former Notice - 629(T)/2010 is cancelled

Date - Until 30 June 2014

MetOcean Engineers (AA706103, AA706104)

Scientific instruments exist as follows:

Position	Remarks
19° 36'.01 S 116° 06'.79 E	lit buoy, Q(5)Y.20s
19° 36'.19 S 116° 06'.84 E	5 poly floats

Chart temporarily affected - Aus 327

1172(T)/2013 AUSTRALIA - WESTERN AUSTRALIA - Glomar Shoal - Scientific instruments

Date - Until 30 June 2014

MetOcean Engineers (AA706103, AA706104)

Scientific instruments marked by special light buoys, Q(5)Y.20s, exist in the following positions:

18° 45'.07 S 117° 01'.90 E
19° 31'.40 S 117° 02'.66 E
19° 31'.37 S 117° 02'.90 E.

Chart temporarily affected - Aus 327 - Aus 741

1173(T)/2013 AUSTRALIA - WESTERN AUSTRALIA - Glomar Shoal - Scientific instruments

Former Notice - 1067(T)/2013 is cancelled

Date - Until 30 June 2014

University of Western Australia (AA707013), MetOcean Engineers (AA706103, AA706104)

Subsurface scientific instruments, >20m below the surface, exist in the following positions:

19° 03'.00 S 117° 03'.60 E
19° 04'.80 S 116° 36'.00 E
19° 31'.20 S 117° 03'.00 E
19° 45'.46 S 117° 01'.23 E.

A subsurface scientific instrument, 12m below the surface, exists in position 19° 32'.38 S 116° 31'.66 E.

Chart temporarily affected - Aus 327 - Aus 741

1174(T)/2013 AUSTRALIA - WESTERN AUSTRALIA - Kwinana - Scientific instrument

Date - Until 7 May 2015

Fremantle Ports (AA706386)

A special cylindrical light buoy, Fl.Y.4s, exists in position 32° 12'.07 S 115° 46'.20 E.

Chart temporarily affected - Aus 114 - Aus 117 - AX 00117T

1175(T)/2013 AUSTRALIA - WESTERN AUSTRALIA - Montebello Islands - Drill rig northwestwards*Former Notice* - 1031(T)/2013 is cancelled*Date* - Until 4 December 2013MODU *Deepwater Frontier* (AA707042, AA707065)Drill rig *Deepwater Frontier* is conducting drilling operations in position 19° 47'.55 S 114° 38'.95 E.**Chart temporarily affected - Aus 328 - Aus 4723 (INT 723) - AX 04723U****1176(T)/2013 AUSTRALIA - WESTERN AUSTRALIA - North West Cape - Drill rig northwards***Former Notice* - 1032(T)/2013 is cancelled*Date* - Until 31 January 2014MODU *Nan Hai 6* (AA705644), Australian Maritime Safety Authority Notice 270/2013 (AA705442)Drill rig *Nan Hai 6* is conducting drilling operations in position 21° 32'.08 S 114° 09'.31 E.**Chart temporarily affected - Aus 328 - Aus 329 - Aus 744****1177(T)/2013 AUSTRALIA - WESTERN AUSTRALIA - Port Hedland - Bed levelling completed***Former Notice* - 930(T)/2013 is cancelled

Port Hedland Port Authority (AA706066)

Cancel this notice on receipt.

Chart formerly affected - Aus 52 - Aus 53 - Aus 54**1178(T)/2013 AUSTRALIA - WESTERN AUSTRALIA - Port Walcott - Scientific instruments recovered***Former Notice* - 931(T)/2013 is cancelled

EGS Survey Pty Ltd (AA706105)

Cancel this notice on receipt.

Chart formerly affected - Aus 55 - Aus 326 - Aus 327 - Aus 740 - Aus 741**1179(T)/2013 AUSTRALIA - SOUTH AUSTRALIA - Wallaroo - Light beacon destroyed**

Department of Planning, Transport and Infrastructure SA Notice 31/2013 (AA707011)

No4 light beacon, *Fl.R.2s* (33° 54'.30 S 137° 34'.33 E), has been destroyed; a port lateral light buoy *Fl.WR* exists in situ.**Chart temporarily affected - Aus 133****1180(T)/2013 AUSTRALIA - VICTORIA - Otway Basin - Pipeline established***Former Notice* - 275(T)/2013 is cancelled

Origin Energy (AA620979, AA654442 - AA654445)

A pipeline exists between positions 39° 06'.94 S 142° 56'.00 E and 39° 06'.49 S 142° 57'.10 E.

Note: charts will be updated on receipt of as laid positions.**Chart temporarily affected - Aus 349 - Aus 787****1181(T)/2013 AUSTRALIA - VICTORIA - Port Phillip - Davey Point - Beacon destroyed**

Victorian Notice 148(T)/2013 (AA705830)

The north cardinal beacon (38° 09'.67 S 145° 05'.08 E) has been destroyed.

Mariners are advised to navigate with caution in the area.

Chart temporarily affected - Aus 143

1182(T)/2013 AUSTRALIA - VICTORIA - Port Phillip - Williamstown - Harbour works completed*Former Notice* - 663(T)/2013 is cancelled

Victorian Notice 150/2013 (AA707001)

Note: charts will be updated on receipt of as built positions.

Cancel this notice on receipt.

Chart formerly affected - Aus 154**1183(T)/2013 AUSTRALIA - VICTORIA - Port Phillip - River Yarra - Short Road Wharf - Harbour works completed***Former Notice* - 74(T)/2013 is cancelled

Port of Melbourne Corporation (AA707002)

Cancel this notice on receipt.

Chart formerly affected - Aus 154**1184(P)/2013 AUSTRALIA - VICTORIA - Port Phillip - South Channel - Toe lines**

Victorian Notice 149/2013 (AA707025)

Toe lines have been amended to the following positions:

38° 17'.55 S 144° 38'.38 E

38° 17'.49 S 144° 39'.02 E

38° 17'.51 S 144° 40'.33 E

38° 17'.58 S 144° 40'.67 E

and

38° 18'.16 S 144° 44'.60 E

38° 18'.55 S 144° 47'.19 E.

Note: new editions of charts are in production.**Chart which will be affected - Aus 143 - Aus 144 - Aus 158****1185(T)/2013 AUSTRALIA - VICTORIA - Port Phillip - Port Melbourne Channel - Light buoys***Date* - Until 30 March 2014

Victorian Notice 142(T)/2013 (AA707098, AA707099)

Special pillar light buoys, VQ(4)Y.4s, exist in the following positions:

37° 58'.87 S 144° 55'.69 E

37° 58'.86 S 144° 54'.96 E

37° 56'.58 S 144° 55'.77 E

37° 56'.57 S 144° 55'.07 E.

Chart temporarily affected - Aus 155**1186(T)/2013 AUSTRALIA - VICTORIA - Warrnambool - Seismic survey southwards***Former Notice* - 1123(T)/2013 is cancelled*Date* - Until 31 December 2013

WHL Energy Ltd (AA703824, AA7033825), Origin Energy (AA704830, AA705212)

MV *Viking II*, with a 6100m towed array, support vessels MV *Pacific Protector* and MV *Instigator* is conducting a survey in an area bounded by the following positions:

38° 40'.0 S 141° 45'.0 E

38° 55'.0 S 142° 50'.0 E

38° 50'.0 S 143° 00'.0 E

38° 50'.0 S 143° 15'.0 E

40° 15'.0 S 143° 10'.0 E

39° 45'.0 S 141° 05'.0 E.

Chart temporarily affected - Aus 348 - Aus 349 - Aus 487 - Aus 787 - Aus 4728 (INT 728)

1187(T)/2013 AUSTRALIA - TASMANIA - Devonport - Light beacon restored

Former Notice - 992(T)/2013 is cancelled

Marine and Safety Tasmania Notice M115/2013 (AA705622)

Cancel this notice on receipt.

Chart formerly affected - Aus 164

1188(T)/2013 AUSTRALIA - TASMANIA - Macquarie Harbour - Kelly Channel - Light beacon relit

Former Notice - 1126(T)/2013 is cancelled

Marine and Safety Tasmania Notice 116/2013 (AA705620)

Cancel this notice on receipt.

Chart formerly affected - Aus 177

1189(T)/2013 AUSTRALIA - TASMANIA - Macquarie Harbour - Scientific instruments

Marine and Safety Tasmania M119/2013 (AA706392)

Subsurface scientific instruments >20m below the surface, marked by a subsurface buoy 15m below the surface, exist in the following positions:

42° 16'.22 S 145° 19'.41 E
 42° 17'.72 S 145° 20'.52 E
 42° 22'.93 S 145° 27'.79 E
 42° 11'.74 S 145° 17'.71 E
 42° 18'.16 S 145° 24'.42 E
 42° 21'.63 S 145° 24'.74 E
 42° 09'.74 S 145° 19'.21 E
 42° 19'.28 S 145° 22'.48 E
 42° 22'.58 S 145° 28'.26 E
 42° 18'.56 S 145° 23'.77 E
 42° 16'.02 S 145° 18'.69 E
 42° 14'.99 S 145° 20'.10 E.

Subsurface scientific instruments <20m below the surface, marked by a subsurface buoy 3m above the seabed, exist in the following positions:

42° 20'.24 S 145° 20'.78 E
 42° 15'.80 S 145° 14'.42 E
 42° 17'.44 S 145° 18'.18 E
 42° 12'.65 S 145° 21'.45 E
 42° 21'.45 S 145° 32'.87 E
 42° 17'.23 S 145° 18'.69 E
 42° 14'.53 S 145° 21'.48 E
 42° 22'.82 S 145° 32'.28 E
 42° 11'.51 S 145° 18'.13 E
 42° 22'.13 S 145° 28'.61 E
 42° 21'.88 S 145° 32'.15 E
 42° 17'.04 S 145° 16'.25 E
 42° 14'.64 S 145° 21'.02 E
 42° 10'.31 S 145° 19'.20 E
 42° 17'.04 S 145° 19'.29 E
 42° 10'.93 S 145° 18'.39 E
 42° 21'.06 S 145° 30'.19 E
 42° 12'.21 S 145° 17'.45 E
 42° 17'.16 S 145° 17'.73 E
 42° 14'.53 S 145° 21'.48 E
 42° 19'.56 S 145° 21'.94 E
 42° 22'.57 S 145° 31'.12 E
 42° 16'.72 S 145° 18'.90 E
 42° 18'.74 S 145° 18'.90 E
 42° 22'.59 S 145° 31'.90 E
 42° 17'.55 S 145° 19'.23 E
 42° 18'.61 S 145° 19'.55 E
 42° 18'.01 S 145° 20'.12 E
 42° 21'.66 S 145° 29'.68 E
 42° 21'.92 S 145° 24'.65 E
 42° 24'.86 S 145° 27'.47 E
 42° 16'.82 S 145° 19'.69 E
 42° 17'.41 S 145° 19'.90 E
 42° 23'.78 S 145° 28'.02 E.

Chart temporarily affected - Aus 177 - Aus 792

HYDROGRAPHIC REPORTS

Nil Reports

NAVIGATION WARNINGS

The following radio messages have been received during the period to 14 November 2013. Signal copies of these messages may be destroyed. It is recommended that the reprint of Navigational Warnings should be kept in a file or a book divided into areas. Cancellation should be made on receipt of signals and reprints.

Rigs on location other than those listed in the latest Section III summary are the subject of Radio Navigational Warnings. Rigs in transit will not be the subject of Warnings.

AUSCOAST WARNING

- 269 Special purpose vessel *Viking II* conducting seismic survey operations towing 8 x 4M cable in an area bounded by 38° 40'.0 S to 40° 15'.0 S and 141° 05'.0 E to 143° 15'.0 E. 6M clearance requested.
- 270 Drill rig *Nan Hai 6* in position 21° 32'.02 S 114° 09'.10 E. 2.5M clearance requested.
- 271 Cancelled.
- 272 Special purpose vessel *Geo Caspian* conducting underwater survey in an area bounded by 12° 46'.4 S to 14° 03'.5 S and 123° 31'.7 E to 124° 03'.4 E. 7M clearance requested.
- 273 Cancelled.
- 274 Cancelled.
- 275 Cancelled.
- 276 Drill rig *Stena Clyde* in position 10° 38'.62 S 126° 09'.62 E. 2.5M clearance requested.
- 277 Mackay DGPS station ALRS Vol(2) in position 21° 06'.19 S 149° 12'.68 E temporarily discontinued.

NAVAREA X WARNINGS

- 060 Cancelled.
- 061 Cancelled.

Navigational warnings in force as at 140001UTC NOV 13.**Auscoast**

2013 099 134 217 236 237 238 244 246 257 262 263 264 268 269 270 272 276 277

Navarea X

2013 037

Summary of mobile drilling rigs as at 140001UTC NOV 13.

<i>Name</i>	<i>Position</i>
Ensco 104	10° 09'.20 S 128° 49'.60 E
Noble Clyde Boudreaux	13° 49'.00 S 123° 19'.35 E
Jack Bates	13° 24'.59 S 122° 59'.02 E
Transocean Legend	13° 19'.00 S 122° 16'.45 E
Atwood Eagle	19° 42'.41 S 115° 52'.53 E
Ensco 109	12° 40'.30 S 124° 32'.30 E
Atwood Falcon	20° 04'.23 S 115° 11'.00 E
Atwood Osprey	20° 24'.50 S 114° 51'.00 E
Nan Hai 6	21° 32'.02 S 114° 09'.10 E

NAVAREA XIV WARNINGS

092 Cancelled.
 093 Cancelled.
 094 Cancelled.
 095 Cancelled.
 096 Cancelled.
 097 Cancelled.
 098 Southern Ocean. Voluntary Ship Reporting System in the New Zealand search and rescue area south of 60° 00' S.

The New Zealand Search and Rescue Authorities have established a voluntary ship reporting system for all vessels operating in the NZSAR region south of 60° 00' S for the purposes of assisting the SAR Authority in coordinating SAR operations in that area.

Area covered: 60° 00' S to the southern edge of the Ross Sea bounded by 163 ° 00' E to 131° 00' W.

All vessels are requested to notify Taupo Maritime Radio on entry and departure into the area and are also encouraged to make daily position reports. Information provided will be used for SAR purposes only.

Taupo Maritime Radio can be contacted on INMARSAT C 582 451 200 067, HF, email, maritime@kordia.com.nz or 00 64 4 550 5280.

Navarea XIV warnings in force as at 140001UTC NOV 13.

2013 098

SOUTH AUSTRALIA**Department of Environment and Natural Resources - Marine Parks**

Telephone: +61 8 8124 4900
 email: marineparks@sa.gov.au
 Website: www.environment.sa.gov.au

Department of Primary Industries and Resources, South Australia

Telephone: +61 8 8226 0222
 Website: www.pir.sa.gov.au

TASMANIA**Department of Primary Industries, Parks, Water and Environment**

Telephone: +61 3 6233 8011
 1300 368 550 (Australia only)
 email: Fishing.Enquiries@dpiwve.tas.gov.au
 Website: www.dpiwve.tas.gov.au

VICTORIA**Department of Environment and Primary Industries**

Telephone: 136 186 (Australia only)
 +61 3 5332 5000
 Website: www.depi.vic.gov.au

Parks Victoria

Telephone: 13 1963 (Australia only)
 +61 3 8627 4699
 email: info@parks.vic.gov.au
 Website: www.parkweb.vic.gov.au

WESTERN AUSTRALIA**Department of Fisheries WA**

Telephone: +61 8 9482 7333
 Fax: +61 8 9482 7389
 email: headoffice@fish.wa.gov.au
 Website: www.fish.wa.gov.au

WA Department of Environment and Conservation

Telephone: +61 8 6467 5000
 Fax: +61 8 6467 5562
 email: info@dec.wa.gov.au
 Website: www.dec.wa.gov.au

6.2 The Great Barrier Reef and Torres Strait

1. The Great Barrier Reef is the largest coral reef ecosystem and the world's largest living structure. It stretches 2300 kilometres from Lady Elliot Island in the south to the tip of Cape York Peninsula in the north, spanning 14 degrees of latitude. Contrary to its name, the Great Barrier Reef is not one long continuous reef, but a complex of some 2900 reefs, 900 islands, lagoons, seagrass meadows and mangrove forests. It hosts approximately 1500 species of fish, 360 species of hard corals, over one third of the world's soft coral species, 5000 mollusc species, six of the world's seven marine turtle species, and more than 30 species of marine mammals.
2. Many activities take place within the reef including commercial and recreational fishing, scientific research, tourism, commercial shipping, recreational boating and traditional use.
3. Due to its international importance, the Great Barrier Reef is both a Marine Park and World Heritage Area. Under the World Heritage Convention, Australia has an international obligation to protect, and conserve the Great Barrier Reef World Heritage Area for future generations. Included in the World Heritage Area (348 000 square kilometres) are all islands, regardless of tenure, and Queensland internal waters. The Great Barrier Reef Marine Park (344 400 square kilometres) is a Commonwealth Marine Park, covering 98.96 percent of the Great Barrier Reef World Heritage Area.
4. The Great Barrier Reef Marine Park (GBRMP) was established in 1975 under the Great Barrier Reef Marine Park Act 1975 (Cth) (GBRMP Act). The GBRMP Act confers responsibility for the management of the Marine Park upon the GBMPA, an Australian Government statutory agency.
5. A combination of legislative and educational mechanisms are used to manage the Marine Park. These include:
 - Legislative provisions under the GBRMP Act and Regulations - including compulsory pilotage requirements for certain ships within prescribed areas, restrictions on

certain activities (e.g. waste discharge, illegal fishing, negligent shipping) and offences and penalties for causing environmental damage to the Marine Park.

- The Great Barrier Reef Marine Park Zoning Plan, 2004 (Zoning plan) defines certain activities which are allowed 'as of right' and where activities are allowed with a permit. Under the Zoning Plan, ships may only navigate within the Designated Shipping Area and the General Use Zone. The Designated Shipping Area has been put in place to help minimise impacts from shipping, while having regard for the shipping industry and Australia's international obligations.
- Plans of management are generally prepared for intensively used, or particularly vulnerable groups of islands and reefs, and for the protection of vulnerable species or ecological communities. Plans of Management complement zoning by addressing issues specific to an area, species or community in greater detail than can be accomplished by the broader reef-wide zoning plans. Current plans in effect include Shoalwater Bay (Dugong) Plan of Management 1997; Cairns Area Plan of Management 2008; Whitsundays Plan of Management 2008, and the Hinchinbrook Plan of Management 2004.
- Special Management Areas provide a responsive and flexible approach to implementing appropriate management strategies at various sites in the Marine Park. They are an additional layer on top of zoning. A Special Management Area may be designated for a number of reasons including:
 - conservation of a particular species or natural resource for example turtle, dugong, bird nesting sites or fish spawning aggregation sites
 - public safety
 - to ensure opportunities for appreciation by the public

- response to an emergency (for example, a ship grounding, oil spill or marine pest outbreak).

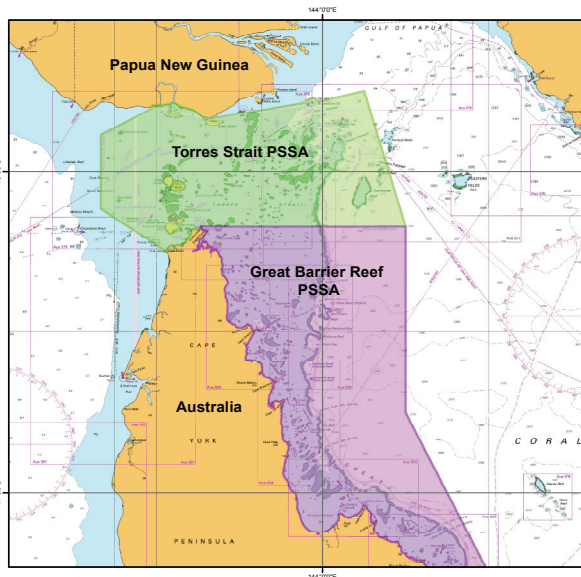
- Best environmental practices or responsible reef practices are designed to complement rather than duplicate legal requirements of environmentally responsible ways to conduct activities such as anchoring near corals and No Anchoring Areas, fuel transfer, waste disposal and marine wildlife watching.

6. The Australian and Queensland Governments have a cooperative and integrated approach to the management of the Marine Park. The GBRMPA is responsible for the overall planning and management of the GBRMP whilst the field based management of the GBRMP (and adjacent Queensland Marine Parks and island National Parks) is carried out in partnership with Queensland State agencies. Maritime Safety Queensland, the Queensland Water Police, the Australian Customs and Border Protection Service (Customs and Border Protection) and AMSA also conduct other day to day management activities in the Marine Park such as enforcement, surveillance, monitoring and education.

6.2.1 Particularly Sensitive Sea Areas

1. The International Maritime Organisation (IMO) declared the Great Barrier Reef region a Particularly Sensitive Sea Area (PSSA) in 1990. This declaration means that special protection measures apply to shipping activities. Such measures include restrictions on discharges from ships, adoption of ship routing measures and other navigational measures such as compulsory pilotage and vessel traffic management systems.
2. The IMO declared the Torres Strait a PSSA in 2005. Torres Strait is a complex shallow region with extensive shoals, banks and reefs and beds of seagrass. It has very strong currents, a complex tidal regime and a low cyclone incidence. The area has the most extensive dugong habitat in the world and an important breeding ground for other species. The Torres Strait has great cultural significance for local communities.

Torres Strait - Particular Sensitive Sea Area



6.2.2 Zoning Plans

1. Zoning plans provide a framework for the protection of critical habitats and the management of human use, particularly extractive activities such as fishing and collecting. For each zone, certain activities are allowed 'as of right' whereas some activities require a permit. Significant penalties apply for contravention of the Zoning Plan, especially in relation to fishing and environmental damage caused by the operation of a vessel.
2. The current Zoning Plan for the Great Barrier Reef Marine Park came into effect on 1 July 2004. It aims to help conserve biodiversity by protecting representative examples of the different habitats and communities in the Great Barrier Reef region.
3. In relation to maritime activities, a zone may be used or entered without permission or notification:
 - in an emergency, for any of the following purposes:
 - to investigate and respond to an emergency alert
 - to save human life or avoid the risk of injury to a person
 - to locate or secure the safety of an aircraft, vessel or structure that is, or may be, endangered by stress of weather or by navigational or operational hazards
 - to carry out emergency repairs to a navigational aid
4. A zone may be used or entered without permission, after notification to the Authority and subject to any directions given by the Authority, for any of the following purposes:
 - to deal with a threat of pollution to the marine environment under Commonwealth law or a national emergency response arrangement in which the Authority participates
 - under Commonwealth law, to remove or salvage a vessel or an aircraft, or a section of a vessel or an aircraft, or other wreck, that is wrecked, stranded, sunk or abandoned and poses a threat to the marine environment or safety.
 - by a traditional owner for an activity not involving the taking of plants, animals or marine products, for the purposes of Aboriginal or Torres Strait islander custom or tradition
 - to perform functions and exercise powers under the Act, the Regulations or a plan of management
 - to enforce a law of the Commonwealth or Queensland by a person authorised under that law, or under another law of that kind
 - to carry out reconnaissance or surveillance for the Commonwealth or Queensland.
 - otherwise than in an emergency, to remove or salvage a vessel or an aircraft, or a section of a vessel or an aircraft, or other wreck, that is wrecked, stranded, sunk or abandoned
 - to construct, operate or service navigational aids, and their ancillary buildings and works, that are authorised under a law of the Commonwealth or of Queensland, including the operation of vessels and aircraft for those purposes
 - to remove, in accordance with an order under the Regulations (being an order to which section 38H of the Act applies) or a deed of agreement, property described in the order or deed

ACTIVITIES GUIDE

(see relevant *Zoning Plans* and *Regulations* for details)

	General Use Zone	Habitat Protection Zone	Conservation Park Zone	Buffer Zone	Scientific Research Zone ²	Marine National Park Zone	Preservation Zone
Aquaculture	Permit	Permit	Permit ¹	×	×	×	×
Bait netting	✓	✓	✓	×	×	×	×
Boating, diving, photography	✓	✓	✓	✓	✓ ²	✓	×
Crabbing (trapping)	✓	✓	✓ ³	×	×	×	×
Harvest fishing for aquarium fish, coral and beachworm	Permit	Permit	Permit ¹	×	×	×	×
Harvest fishing for sea cucumber, trochus, tropical rock lobster	Permit	Permit	×	×	×	×	×
Limited collecting	✓ ⁴	✓ ⁴	✓ ⁴	×	×	×	×
Limited spearfishing (snorkel only)	✓	✓	✓ ¹	×	×	×	×
Line fishing	✓ ⁵	✓ ⁵	✓ ⁶	×	×	×	×
Netting (other than bait netting)	✓	✓	×	×	×	×	×
Research (other than limited impact research)	Permit	Permit	Permit	Permit	Permit	Permit	Permit
Shipping (other than in a designated shipping area)	✓	Permit	Permit	Permit	Permit	Permit	×
Tourism programme	Permit	Permit	Permit	Permit	Permit	Permit	×
Traditional use of marine resources	✓ ⁷	✓ ⁷	✓ ⁷	✓ ⁷	✓ ⁷	✓ ⁷	×
Trawling	✓	×	×	×	×	×	×
Trolling	✓ ⁵	✓ ⁵	✓ ⁵	✓ ^{5,8}	×	×	×

PLEASE NOTE: This guide provides an introduction to Zoning in the Great Barrier Reef Marine Park.

Relevant Queensland Marine Park Zoning Plans or the Queensland Department of Environment and Resource Management should be consulted for confirmation of use or entry requirements.

1. Restrictions apply to aquaculture, spearfishing and harvest fishing for aquarium fish, beachworm and coral in the Conservation Park Zone.
2. Except for One Tree Island Reef (SR-23-2010) and Australian Institute of Marine Science (SR-19-2008) which are closed to public access and shown as orange, all other Scientific Research Zones are shown as green with an orange outline.
3. Limited to 4 catch apparatus per person (eg. crab pots, collapsible traps or dillies).
4. By hand or hand-held implement and generally no more than 5 of a species.
5. Maximum of 3 lines/rods per person with a combined total of 6 hooks per person.
6. Limited to 1 line/rod per person and 1 hook per line. Only 1 dory detached from a commercial fishing vessel.
7. Apart from traditional use of marine resources in accordance with s.211 of the *Native Title Act 1993*, an accredited Traditional Use of Marine Resources Agreement or permit is required.
8. Pelagic species only. Seasonal Closures apply to some Buffer Zones.

Detailed information is contained in the Great Barrier Reef Marine Park Zoning Plan and Regulations.

- Permits are required for most other activities not listed above.
- Commonwealth owned islands in the Great Barrier Reef Marine Park are zoned "Commonwealth Islands Zone" - shown as cream.
- All Commonwealth Islands may not be shown.
- Special Management Areas may provide additional restrictions at some locations.
- The Zoning Plan does not affect the operation of s.211 of the *Native Title Act 1993*.

ACCESS TO ALL ZONES IS PERMITTED IN AN EMERGENCY.

Source: Great Barrier Reef Marine Park Authority

- to undertake Defence activities that would otherwise require permission under this Zoning Plan
 - to undertake government geodetic surveys, government bathymetric surveys or similar government surveys
 - to undertake urgent maintenance or works on essential public services (including power, water, sewerage and communication systems), that are authorised under a law of the Commonwealth, Queensland or a local government authority
 - to deal with an emergency involving a serious threat to the environment, other than a threat mentioned in subparagraph 5.1 (a) (v) or (vi) of the *Great Barrier Reef Zoning Plan 2004*.
5. See GBRMPA website for information of the *Great Barrier Reef Zoning Plan 2004*.

Website:	www.gbrmpa.gov.au
Telephone:	+617 4750 0700

6.2.3 Permits

1. Before any activity is undertaken in the Marine Park it is essential to check the Great Barrier Reef Marine Park Zoning Plan 2004 or the Activities Guide (p.72) to see if the activity is allowed, and whether the activity requires a Marine Parks permit.
2. As a general guide, the following activities require a Marine Parks permit:
 - most commercial activities, including tourist operations
 - installation and operation of structures, such as jetties, marinas, pontoons and aquaculture facilities
 - any works, such as repairs to structures, dredging and dumping of spoil, placement and operation of moorings
 - waste discharge from a fixed structure
 - research except for limited impact research
 - educational programs

3. Most visitors to the Marine Park will NOT require a permit for recreational activities.
1. Permits to conduct activities within the Marine Park are generally issued as joint permits by both the GBRMPA and the Queensland Parks and Wildlife Service. Applications should be lodged as early as possible, preferably four months prior to the date required.
2. See the activities guide above or the GBRMPA's website for permit application forms and further information.

Website:	www.gbrmpa.gov.au/corp_site/permits
Telephone:	+617 4750 0700
Fax:	+61 7 4772 6093
email:	permitenquiry@gbrmpa.gov.au

3. For information about activities undertaken outside of the Marine Park which might affect either the World Heritage Area or any one of a number of protected matters (e.g. endangered species), contact the Department of Environment.

Website:	www.environment.gov.au
----------	------------------------

6.2.4 Designated Shipping Areas

1. Ships may transit the Marine Park through the General Use Zone (GUZ) or the Designated Shipping Areas (DSA). The GUZ or the DSA may be used or entered without permission for the navigation of a ship, subject to any requirements for a compulsory pilot, or if any equipment that is normally used for fishing or collecting is stowed or secured when the vessel is in part of the zone in which the use of the equipment is not permitted. A ship is generally defined as a vessel greater than 50 metres in overall length.
2. Ship operators require a permit from GBRMPA to navigate outside the DSA and GUZ.
3. For further details regarding the definition of a ship (see Ch.8) and the Great Barrier Reef Marine Park Regulations 1983.

6.2.5 Cruise Ship Activities

1. To provide safer navigation through the Great Barrier Reef waters, cruise ships are required under Commonwealth law to carry a licensed pilot in designated compulsory pilotage areas. These areas are:
 - The inner route of the Great Barrier Reef Region bounded by the northern boundary of the Great Barrier Reef Region, latitude 16°39.91'S, the Australian mainland and the outer edge of the Great Barrier Reef
 - Hydrographer's Passage
 - The Whitsundays compulsory pilotage area.
2. Cruise ship operators are required to have a Marine Parks permit to conduct a tourism program on a cruise ship in the Marine Park. When applying, operators should detail their proposed itinerary and activities to ensure that an appropriate permit is issued.
3. The GBRMPA has identified 32 designated anchorages (for cruise ships) throughout the Marine Park. These anchorages provide access to a range of reefs and islands which meet safety and environmental factors. There are 11 anchorages in the Far Northern Management Area of the Marine Park, 7 in the Cairns Area, 1 in the Dunk Island Area, two in the Hinchinbrook Area, eight in the Whitsundays Area and three in the Mackay/Capricorn Management Area. Some anchorages, such as the far northern anchorages, specifically cater for smaller cruise ships which are less than 120 metres and carrying less than 150 passengers.
4. All anchorages must be booked with the GBRMPA prior to use. Generally only one cruise ship is allowed to use a cruise ship anchorage at any one time. Geographical coordinates for the anchorages are available online at GBRMPA's website.
5. Cruise ship anchorages are shown on Australian Nautical Charts with the symbol below containing unique anchorage letter identifiers. The GBRMPA has also identified 9 cruise ship transit corridors that enable cruise ships to transit outside the Designated Shipping Area and General Use Zone for sightseeing and to discharge waste external to the Marine Park. No anchoring is permitted in

these corridors. Geographical coordinates for the transit corridors can be found on cruise ship permits and on the GBRMPA's website.

6. A map showing cruise ship anchorages and transit corridors can be ordered from the GBRMPA by email or in the website.

email:	cruise.bookings@gbrmpa.gov.au
Website:	www.gbrmpa.gov.au www.onboard.gbrmpa.gov.au
Anchorage and transit corridors	http://onboard.gbrmpa.gov.au/home/ what_you_do/cruise_ships/cruise_ship_ anchorages

Example of a cruise ship anchorage
symbol on a nautical chart



6.2.6 Environmentally Sensitive Sea
Areas (ESSAs)

1. These seas have specific environmental protective measures that apply for domestic commercial activities including tourism, fishing, mining, scientific and recreational purposes. To undertake these activities in an ESSA , a permit must be obtained from the Director of National Parks. ESSAs are marked upon navigational charts, however there are no restrictions upon international shipping activities or commercial vessel transit undertaking voyages in conformance with MARPOL and SOLAS. Vessels should note the environmental significance of ESSAs and take extra care while transiting through these areas.

6.3 Depiction of Zones on
Australian Nautical Charts

6.3.1 Marine Protected Areas




1. Where appropriate and practical, Marine Protected Areas are charted as Environmentally Sensitive Sea Area (ESSAs), Particularly Sensitive Sea Area (PSSAs) or Antarctic Specially Protected Areas (ASPAs). The Australian Hydrographic Service will include the outer limits of the area, the outer limits of restrictions, and chart notes. Mariners are

advised to seek guidance on the restrictions within these areas from the responsible agency.

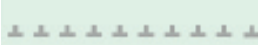
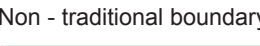

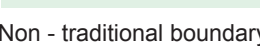
6.3.2 Great Barrier Reef Marine Park Zones

- The following bounded areas will be shown on Australian Nautical Charts:
 - The Great Barrier Reef Marine Park outer boundary - to alert mariners when they are entering the area in which Marine Park and PSSA restrictions apply.
 - The Designated Shipping Area - where in addition to the General Use Zone the GBRMP, vessel transit is allowed through other Great Barrier Reef Marine Park zones.
- The tables below show how the bounded areas are depicted on a nautical paper chart.
- Mariners should note that the “shaded” side of the boundary indicates which side the boundary navigation should be undertaken.
- The symbology on Australian Nautical Charts can also be found in Admiralty Publication NP 5011.

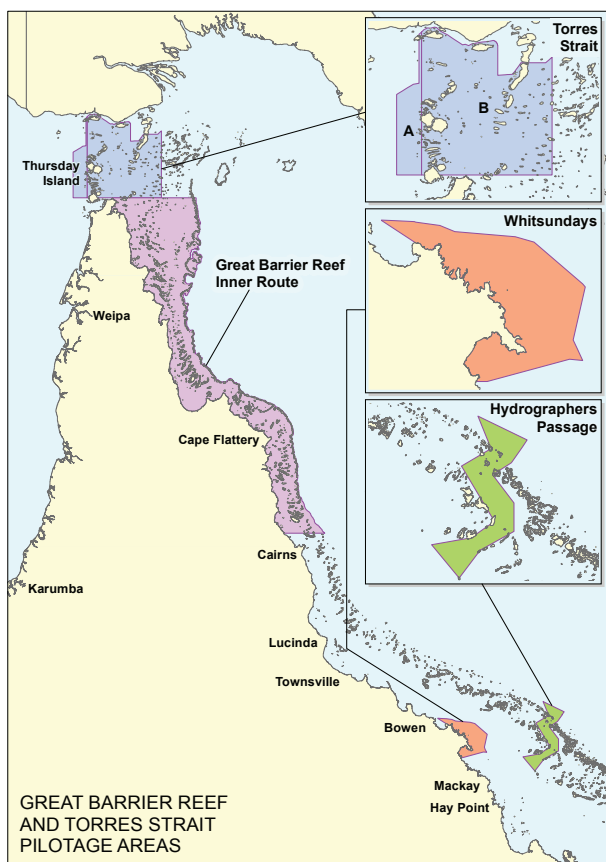
Zones depicted on a nautical paper chart

NP 5011 Reference	Description	Depicted on Chart
N 22	Particularly Sensitive Sea Area	 PSSA (see GBRMP Note)
N 22	Great Barrier Reef Marine Park	 GBRMP (see Note)
N 22	Environmentally Sensitive Sea Area	 ESSA (see Note)
N	Designated Shipping Area	 DSA (see Note)

Zones depicted on an ENC

NP 5011 Reference	Description	Encoded in an ENC as a:	Display on ECDIS
N 22	Particularly Sensitive Sea Area	Administration Area	Traditional boundary turned on 
	Designated Shipping Area		Non - traditional boundary 
N 22	Environmentally Sensitive Sea Area (e.g. Great Barrier Reef Marine Park)	Restricted Area	Traditional boundary turned on 
	Great Barrier Reef Marine Park High		Non - traditional boundary 

8.8 Pilotage - Torres Strait and the Great Barrier Reef

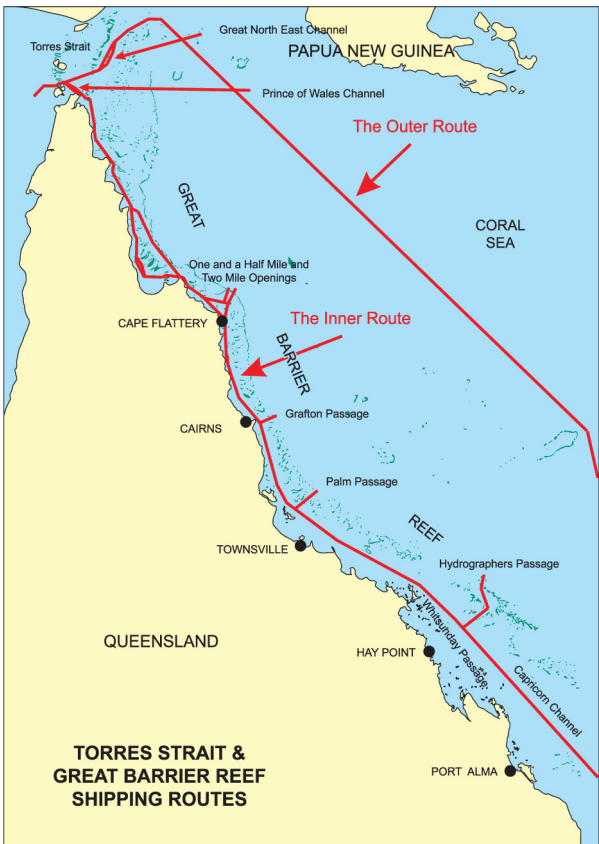


1. In 1991, the Australian Government imposed a scheme of pilotage on all regulated ships within the pilotage areas of the GBR Region and in 2006 extended the system of pilotage to the Torres Strait (Great North East Channel).
2. These pilotage requirements are contained in The *Great Barrier Reef Marine Park Act 1975* (Cth). The requirement to carry a pilot in the Inner Route (Cape York to Cairns Section), Hydrographers Passage and Torres Strait (Great North East Channel) has been endorsed by the International Maritime Organization (IMO) under *Resolutions A710 (17)* and *MEPC 133 (53)*.
3. Regulated Ships are:
 - any vessel that is 70 metres or longer in overall length, or
 - any loaded oil tanker or chemical carrier or liquefied gas carrier
 - other than a vessel belonging to a Defence Force or which has a pilotage exemption issued by Great Barrier Reef Marine Park Authority (GBRMPA).

4. There are four areas where pilots licensed by AMSA must be carried:
 - The Inner Route - Cape York to Cairns
 - Torres Strait - Great North East Channel
 - Hydrographers Passage
 - Whitsunday Passage.
5. A master or owner may apply to GBRMPA AMSA to seek an exemption from the requirement to navigate with a pilot in a pilotage area of the Great Barrier Reef Marine Park and Torres Strait. A technical assessment of the vessel and a review of the qualifications and recent GBR experience of the entire bridge team will be taken into consideration when deciding on the granting of a pilotage exemption.

8.9 Torres Strait and Great Barrier Reef - Shipping Routes

1. There are stringent management arrangements for commercial shipping in the waters of the Great Barrier Reef and Torres Strait, designated Particularly Sensitive Sea Areas by the IMO in 1990 and 2005.
2. There are several measures in place to increase navigational safety and reduce the risk of ship groundings and collisions include:
 - Designated Shipping Areas (see *Great Barrier Reef Marine Park Zoning Plan 2003*)
 - Recommended pilotage
 - Mandatory vessel reporting and monitoring
 - Aids to Navigation
 - Automatic Identification Systems (AIS)

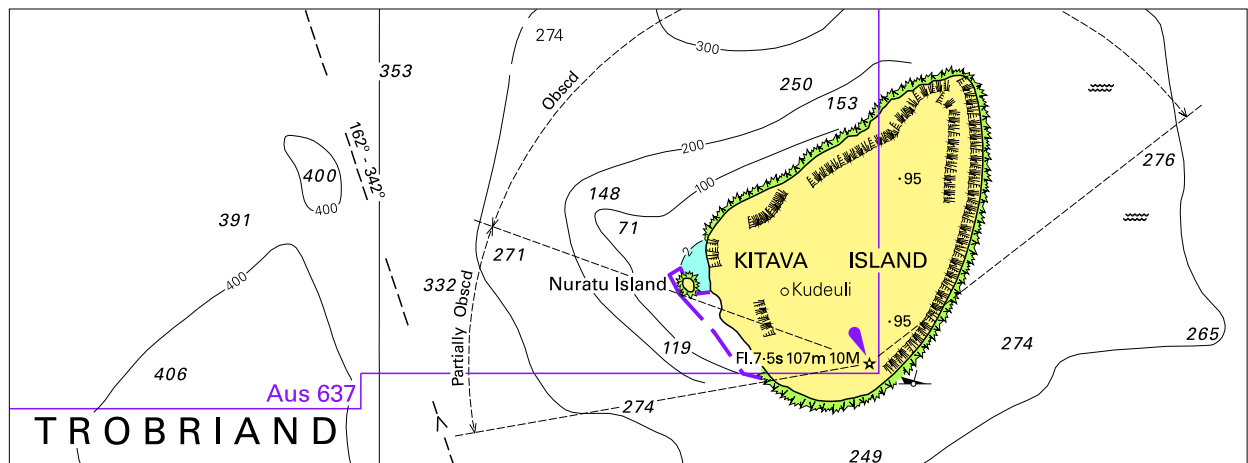


8.9.6 Further Information on Shipping Routes

1. More information on navigating through the Torres Strait and Great Barrier Reef can be found at AMSA's Coastal Pilotage Portal, latest nautical charts and the *Great Barrier Reef Marine Park Zoning Plan 2003* and the *Great Barrier Reef Marine Park Regulations 1983*.

AMSA Pilotage Portal:	www.amsa.gov.au/navigation/shipping-management/pilotage
-----------------------	--

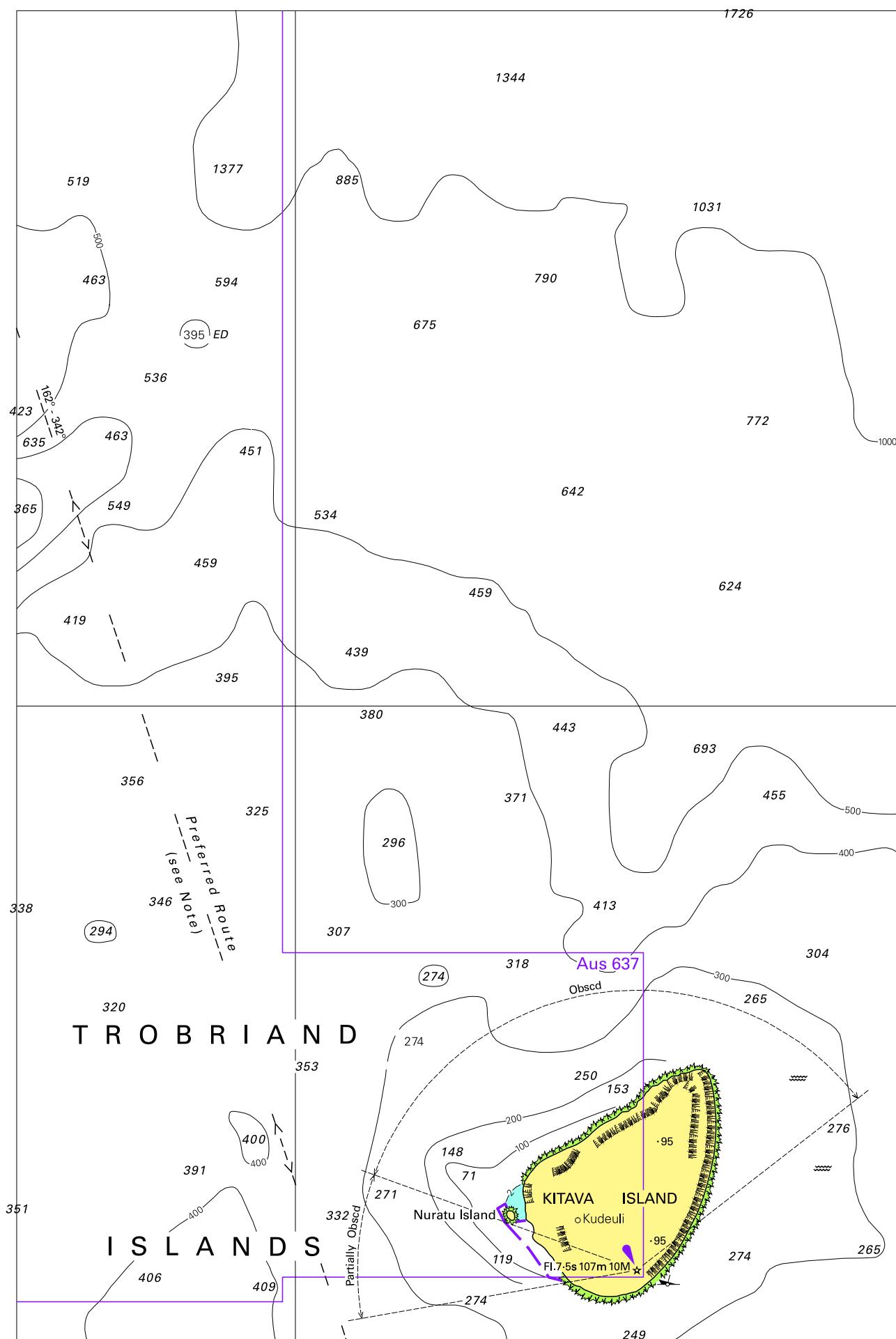
To accompany Australian Notice to Mariners 1138/2013

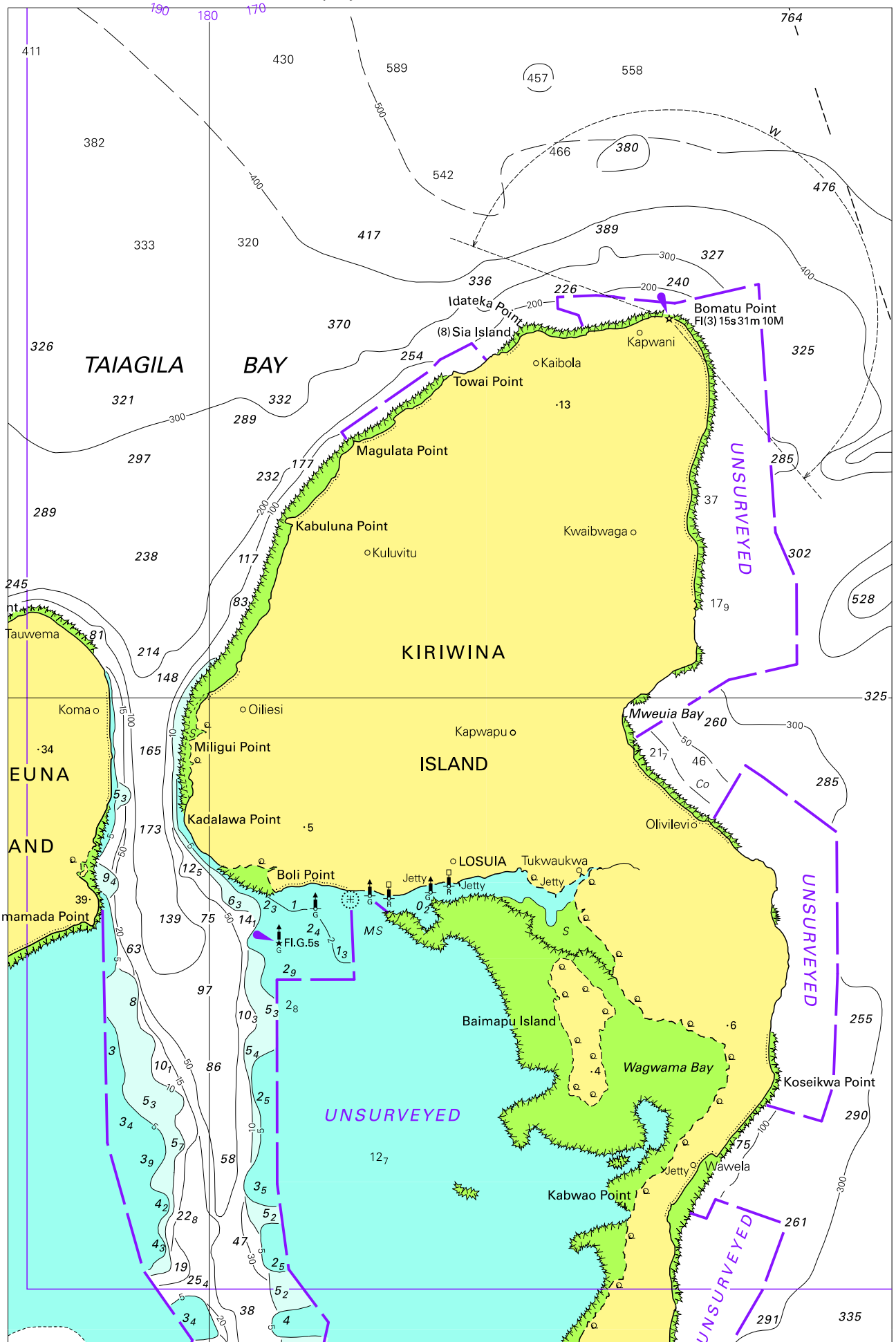


Block for chart Aus 515

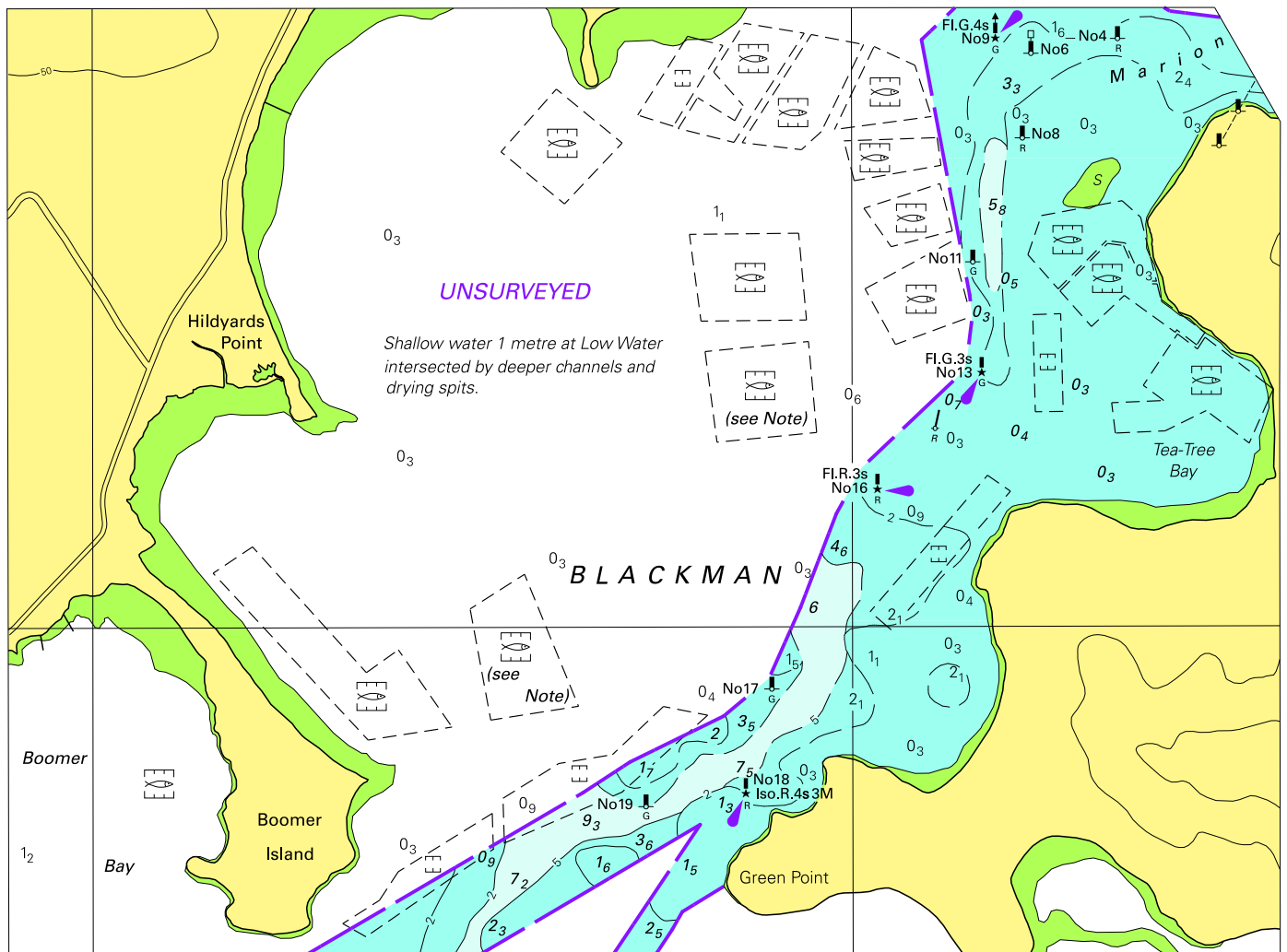
© Commonwealth of Australia 2013

(60.5 x 163.7mm)





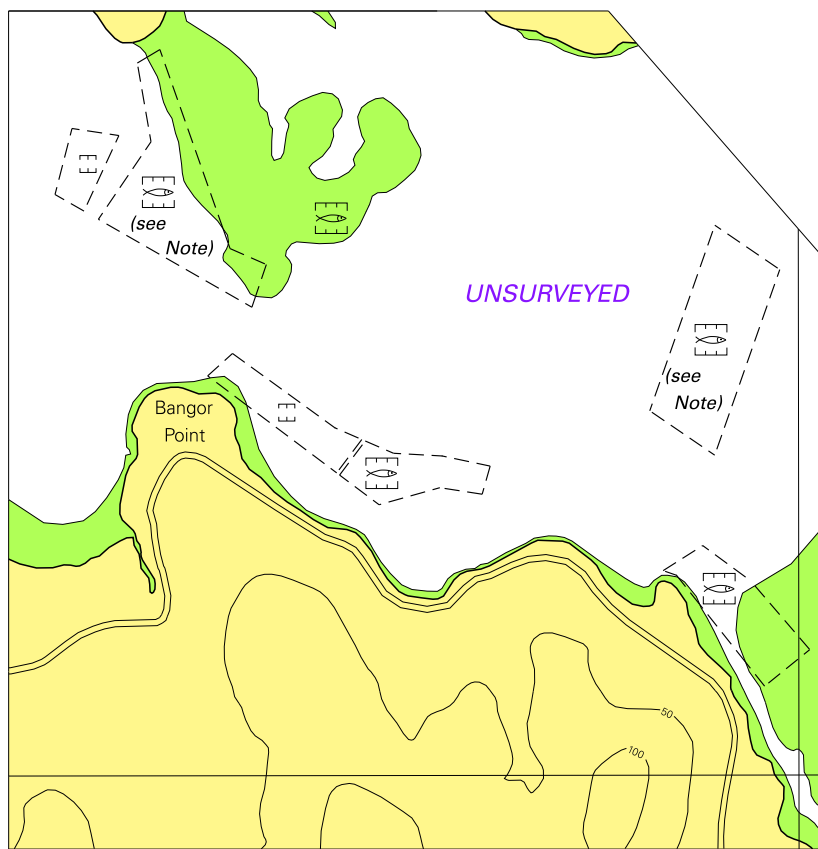
To accompany Australian Notice to Mariners 1149/2013



Block A for Aus 169

(135-6 x 182-4mm)

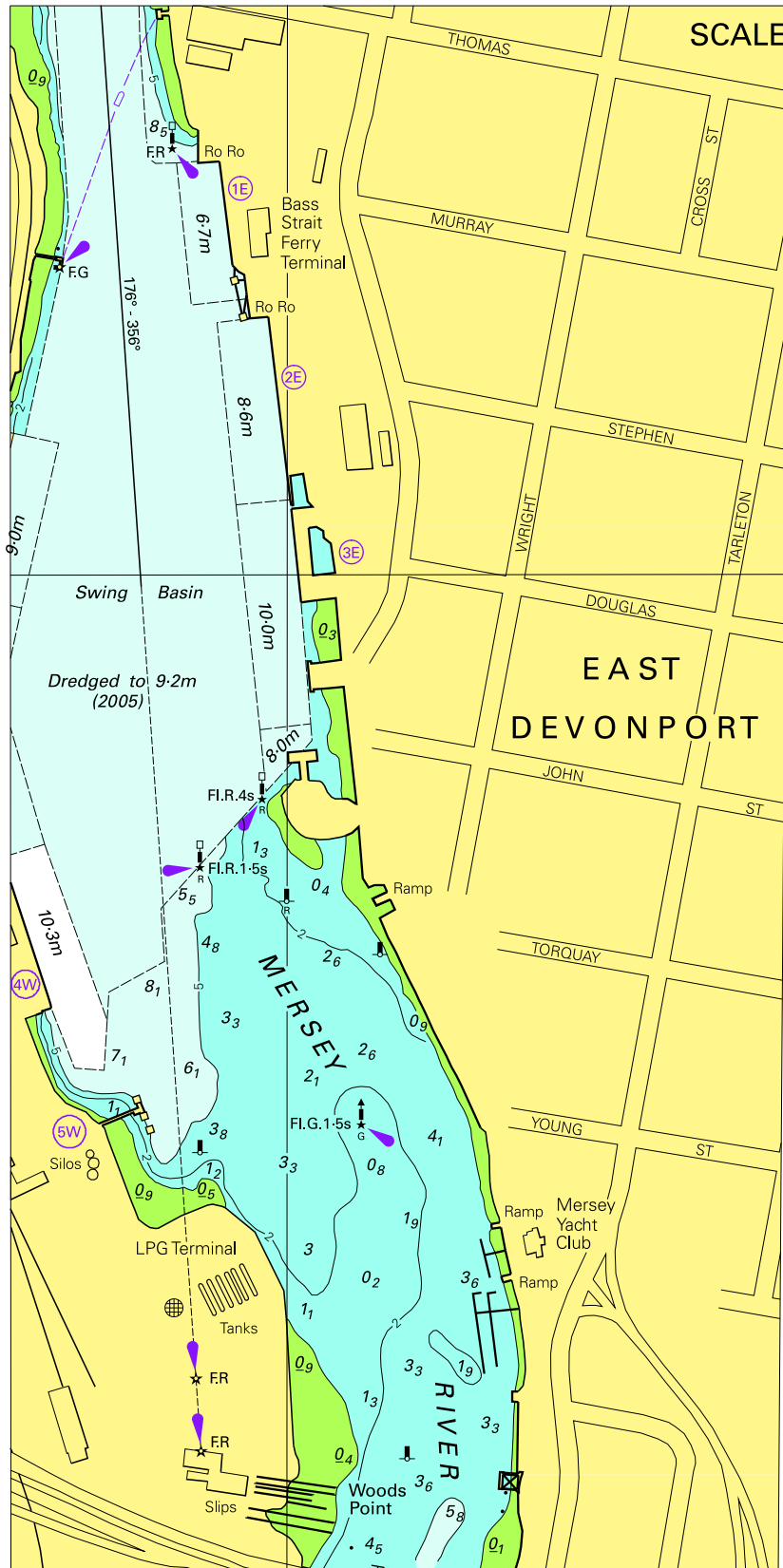
To accompany Australian Notice to Mariners 1149/2013



Block B for Aus 169

(110.8 x 107.1mm)

To accompany Australian Notice to Mariners 1150/2013



© Commonwealth of Australia 2013

Block for chart Aus 164

(106-8 x 217-8mm)