



1 November 2013

Edition 22

Australian Notices to Mariners are the authority for correcting Australian Charts and Publications

---

# AUSTRALIAN NOTICES TO MARINERS

**Notices 1077 - 1126**



Published fortnightly by the Australian Hydrographic Service

Commodore B.K. BRACE RAN  
*Hydrographer of Australia*

---

## SECTIONS.

- I. Australian Notices to Mariners, including blocks and notes.
- II. Hydrographic Reports.
- III. Navigational Warnings.

## SUPPLEMENTS.

- I. Tracings
- II. Cumulative List of Australian Notices to Mariners.
- III. Cumulative List of Temporary and Preliminary Australian Notices to Mariners.
- IV. Temporary and Preliminary Notices in force.
- V. Amendments to Admiralty List of Lights and Fog Signals (Vol K), Radio Signals (NP 281(2), 282, 283(2), 285, 286(4)) and Sailing Directions (NP 9, 13, 14, 15, 33, 34, 35, 36, 39, 44, 51, 60, 61, 62, 100, 136).

---

© Commonwealth of Australia 2013

This work is copyright. Apart from any use permitted under the Copyright Act 1968, no part may be reproduced by any process, adapted, communicated or commercially exploited without prior written permission from The Commonwealth represented by the Australian Hydrographic Service.

## IMPORTANT NOTICE

This edition of Notices to Mariners includes all significant information affecting AHS products which the AHS has become aware of since the last edition. All reasonable efforts have been made to ensure the accuracy and completeness of the information, including third party information, on which these updates are based. The AHS regards third parties from which it receives information as reliable, however the AHS cannot verify all such information and errors may therefore exist. The AHS does not accept liability for errors in third party information.

---

## GENERAL INSTRUCTIONS

The substance of these notices should be inserted on the charts affected.

Bearings are referred to the true compass and are reckoned clockwise from North; those relating to lights are given as seen by an observer from seaward. Positions quoted in permanent notices relate to the horizontal datum for the chart(s). When preliminary or temporary notices affect multiple charts, positions will be provided in relation to only one horizontal datum and that datum will be specified. When the multiple charts do not have a common horizontal datum, mariners will be required to adjust the position(s) for those charts not on the specified datum. The range quoted for a light is its nominal range. Depths are with reference to the chart datum of each chart. Heights are above mean high water springs or mean higher high water, as appropriate.

The capital letter (P) or (T) after the number of any notice denotes a preliminary or temporary notice respectively, which are contained separately at the end of the permanent notices. A star (\*) adjacent to the number of a notice indicates that the notice is based on original information.

---

## REPORTING OF DANGERS

Mariners are particularly requested to notify the AUSTRALIAN HYDROGRAPHIC SERVICE, Locked Bag 8801 Wollongong, NSW 2500 (Fax 02-4223 6599, e-mail [Hydro.NTM@defence.gov.au](mailto:Hydro.NTM@defence.gov.au) or, alternatively by filling in and submitting the [Hydrographic Notes](#) forms located on the web site – [www.hydro.gov.au](http://www.hydro.gov.au)), immediately on the discovery of new dangers or suspected dangers to navigation. For changes or defects in aids to navigation notify AusSAR (Fax 02-6230 6868 or email [rccaus@amsa.gov.au](mailto:rccaus@amsa.gov.au)).

---

## AUTHORISED USE

Copies of Australian notices are available free of charge from the Australian Hydrographic Service (AHS) website ([www.hydro.gov.au](http://www.hydro.gov.au)) and through the eNotices (email) service ([www.hydro.gov.au/enotices/enotices.htm](http://www.hydro.gov.au/enotices/enotices.htm)).

Individual Notices may be copied for the purpose of inserting Notice substance on official charts and publications. Paper copies may be printed by chart agents and distributed to customers on a cost recovery basis. Participating chart agents are listed on the AHS website as providing a 'Paper Notices to Mariners' service ([www.hydro.gov.au/prodserv/distributors/distributors.htm](http://www.hydro.gov.au/prodserv/distributors/distributors.htm)). Copies of the notices may not be sold for profit without prior written agreement.

## NUMERICAL INDEX OF NOTICES TO MARINERS

### Edition No 22

Notices	Aus Chart, INT Chart, ENC Cell, AHP, BA Pubs
1077	Aus 63, 700, AX 00112T, 00193P, 00200T, 00248L, 00261L, 00262T, 63112, 63200, 63262, 67192, 67248, 67261, AXA 0830T
1078	Navigational warning service survey
1079	Aus 367, 822, 823, AX 00367S, 00822S, 00823S
1080	Aus 270
1081	Aus 835, 839
1082	Aus 819
1083	Aus 521, 522
1084	Aus 309, 311, AX 00309T, 00309U, 00311U
1085	Aus 751
1086	Aus 109
1087	Aus 323, 733, 4722, INT 722, AX 04722U
1088	Aus 55, 326, 327, 740, 741
1089	Aus 4070, INT 70
1090	Aus 141, 349
1091	Aus 143, 154, 155
1092	Aus 487, 800, 4644, INT 644
1093	Aus 178
1094	Aus 798
1095(T)	Aus 196, 198, 199
1096(T)	Aus 207, 208
1097(T)	Aus 200, 202, AX 00202T
1098(T)	Aus 831, AXA 0830T
1099(T)	Aus 252, 253, 254
1100(T)	Aus 230
1101(T)	Aus 249, 250, AX 00249S
1102(T)	Aus 250
1103(T)	Aus 235
1104(T)	Aus 235
1105(T)	Aus 235, 236, 237, 238, 814, 815
1106(T)	Aus 268
1107(T)	Aus 247, 819, 820, AX 00820S
1108(T)	Aus 253
1109(T)	Aus 252, 254, 824
1110(T)	Aus 24, 26, 27, 28, AX 00026T
1111(T)	Aus 26, 29, 309, 315, 316, 318, 722, 724, 725, AX 00026T, 00309T, 00309U, 00315U, 00722T
1112(T)	Aus 26, 28, AX 00026T
1113(T)	Aus 310, 4721, INT 721, AX 00310U, 04721U
1114(T)	Aus 311, 4721, INT 721, AX 00311U, 04721U
1115(P)	Aus 57, 58, 59
1116(T)	Aus 81, 751
1117(T)	Aus 328
1118(T)	Aus 328, 329, 744
1119(T)	Aus 319, 320, 322, 4721, 4722, INT 721, 722, AX 00319U, 00322U, 04721U, 04722U
1120(T)	Aus 125
1121(P)	Aus 343, 485, 776, AX 00343S, 00776S
1122(T)	Aus 143, 155
1123(T)	Aus 349, 4728, INT 728
1124(T)	Aus 487, 798, 800
1125(T)	Aus 173
1126(T)	Aus 177

# NUMERICAL INDEX OF CHARTS AFFECTED

## Edition No 22

Aus Chart	Notices
Aus 24	1110(T)
Aus 26	1110(T), 1111(T), 1112(T)
Aus 27	1110(T)
Aus 28	1110(T), 1112(T)
Aus 29	1111(T)
Aus 55	1088
Aus 57	1115(P)
Aus 58	1115(P)
Aus 59	1115(P)
Aus 63	1077
Aus 81	1116(T)
Aus 109	1086
Aus 125	1120(T)
Aus 141	1090
Aus 143	1091, 1122(T)
Aus 154	1091
Aus 155	1091, 1122(T)
Aus 173	1125(T)
Aus 177	1126(T)
Aus 178	1093
Aus 196	1095(T)
Aus 198	1095(T)
Aus 199	1095(T)
Aus 200	1097(T)
Aus 202	1097(T)
Aus 207	1096(T)
Aus 208	1096(T)
Aus 230	1100(T)
Aus 235	1103(T), 1104(T), 1105(T)
Aus 236	1105(T)
Aus 237	1105(T)
Aus 238	1105(T)
Aus 247	1107(T)
Aus 249	1101(T)
Aus 250	1101(T), 1102(T)
Aus 252	1099(T), 1109(T)
Aus 253	1099(T), 1108(T)
Aus 254	1099(T), 1109(T)
Aus 268	1106(T)
Aus 270	1080
Aus 309	1084, 1111(T)
Aus 310	1113(T)
Aus 311	1084, 1114(T)
Aus 315	1111(T)
Aus 316	1111(T)
Aus 318	1111(T)
Aus 319	1119(T)
Aus 320	1119(T)
Aus 322	1119(T)
Aus 323	1087
Aus 326	1088
Aus 327	1088
Aus 328	1117(T), 1118(T)
Aus 329	1118(T)

Aus Chart	Notices
Aus 343	1121(P)
Aus 349	1090, 1123(T)
Aus 367	1079
Aus 485	1121(P)
Aus 487	1092, 1124(T)
Aus 521	1083
Aus 522	1083
Aus 700	1077
Aus 722	1111(T)
Aus 724	1111(T)
Aus 725	1111(T)
Aus 733	1087
Aus 740	1088
Aus 741	1088
Aus 744	1118(T)
Aus 751	1085, 1116(T)
Aus 776	1121(P)
Aus 798	1094, 1124(T)
Aus 800	1092, 1124(T)
Aus 814	1105(T)
Aus 815	1105(T)
Aus 819	1082, 1107(T)
Aus 820	1107(T)
Aus 822	1079
Aus 823	1079
Aus 824	1109(T)
Aus 831	1098(T)
Aus 835	1081
Aus 839	1081
Aus 4070	1089
Aus 4644	1092
Aus 4721	1113(T), 1114(T), 1119(T)
Aus 4722	1087, 1119(T)
Aus 4728	1123(T)
AX 00026T	1110(T), 1111(T), 1112(T)
AX 00112T	1077
AX 00193P	1077
AX 00200T	1077
AX 00202T	1097(T)
AX 00248L	1077
AX 00249S	1101(T)
AX 00261L	1077
AX 00262T	1077
AX 00309U	1084, 1111(T)
AX 00309T	1084, 1111(T)
AX 00310U	1113(T)
AX 00311U	1084, 1114(T)
AX 00315U	1111(T)
AX 00319U	1119(T)
AX 00322U	1119(T)
AX 00343S	1121(P)
AX 00367S	1079
AX 00722T	1111(T)
AX 00776S	1121(P)

Aus Chart	Notices
AX 00820S	<a href="#">1107(T)</a>
AX 00822S	<a href="#">1079</a>
AX 00823S	<a href="#">1079</a>
AX 04721U	<a href="#">1113(T)</a> , <a href="#">1114(T)</a> , <a href="#">1119(T)</a>
AX 04722U	<a href="#">1087</a> , <a href="#">1119(T)</a>
AX 63112	<a href="#">1077</a>
AX 63200	<a href="#">1077</a>
AX 63262	<a href="#">1077</a>
AX 67192	<a href="#">1077</a>
AX 67248	<a href="#">1077</a>
AX 67261	<a href="#">1077</a>
AXA 0830T	<a href="#">1077</a> , <a href="#">1098(T)</a>

INT Chart	Notices
INT 70	<a href="#">1089</a>
INT 644	<a href="#">1092</a>
INT 721	<a href="#">1113(T)</a> , <a href="#">1114(T)</a> , <a href="#">1119(T)</a>
INT 722	<a href="#">1087</a> , <a href="#">1119(T)</a>
INT 728	<a href="#">1123(T)</a>

**1077 AUSTRALIA - Product**

Australian Hydrographic Service (AA702271, AA702562, AA703506)

**New Edition**

<i>Chart</i>	<i>Published</i>	<i>Title and description of amendments</i>	<i>Scale</i>	<i>Index Chart</i>	<i>Price</i>
Aus 63	1/11/2013	Australia – North West Coast – Western Australia – Mary Anne Passage 21° 02'·2 S – 21° 19'·9 S 115° 09'·6 E – 115° 39'·5 E <i>New edition with general updating throughout and includes latest surveys.</i>	1:50 000	Aus 5000 and Aus 5001	\$35.00
Aus 700	1/11/2013	Australia – North West Coast – Queensland – Western Approaches to Torres Strait 10° 17'·22 S – 11° 15'·82 S 140° 47'·13 E – 142° 20'·93 E <i>New edition with general updating throughout and includes latest surveys.</i>	1:150 000	Aus 5000	\$35.00

**New Miscellaneous Edition**

<i>Chart</i>	<i>Published</i>	<i>Title</i>	<i>Scale</i>	<i>Remarks</i>	<i>Chart withdrawn</i>
AX 00112T	1/11/2013	Australia – West Coast – Western Australia – Approaches to Fremantle	1:37 500	Fleet use only	AX 63112
AX 00200T	1/11/2013	Australia – East Coast – New South Wales – Port Jackson and Approaches	1:20 000	Fleet use only	AX 63200
AX 00248L	1/11/2013	Australia – East Coast – Queensland – Freshwater Beach	1:15 000	Fleet use only	AX 67248
AX 00261L	1/11/2013	Australia – East Coast – Queensland – Sabina Point	1:7 500	Fleet use only	AX 67261
AX 00262T	1/11/2013	Australia – East Coast – Queensland – Approaches to Cairns	1:25 000	Fleet use only	AX 63262
AX 00193P	1/11/2013	Australia – East Coast – Jervis Bay	1:15 000	Fleet use only	AX 67192
AXA 0830T	1/11/2013	Australia – East Coast – Queensland – Russell Island to Low Islets	1:150 000	Fleet use only	

**Australian National Tide Tables 2014**

<i>AHP No</i>	<i>Title</i>	<i>Recommended retail price (incl GST)</i>	<i>Remarks</i>
AHP 114	AusTides 2014	\$59.95	Electronic Tide Tables (AusTides 2014) for Australia, Antarctica, Papua New Guinea, Solomon Islands and East Timor. Provides tidal data for 2013 and 2014. Available from accredited distribution agents.

For further details refer to the AHS website at [www.hydro.gov.au](http://www.hydro.gov.au) for new edition and new chart stock arrival information.

When placing orders with a chart agent, mariners should advise whether their order pertains to the current edition or the new edition.

**1078 AUSTRALIA - Navigational warning service survey**

Australian Maritime Safety Authority (AA666610)

The International Hydrographic Organization's World-Wide Navigational Warning Service (WWNWS) is conducting a survey concerning the quality of maritime safety information broadcast via SafetyNET and NAVTEX to identify measures to improve service. It provides an opportunity to comment on the quality of the content and reception of Navigational Warnings provided by each NAVAREA Coordinator. Please visit [http://www.surveymonkey.com/s/IHO\\_survey](http://www.surveymonkey.com/s/IHO_survey) to complete the short survey. The World Meteorological Organization offers a similar survey regarding the World-Wide Meteorological Information and Warning Service available at: [www.jcomm.info/mmms](http://www.jcomm.info/mmms). Your participation is greatly appreciated and valued.

**1079\* AUSTRALIA - QUEENSLAND - Bates Rock - Depth**  
 HMAS *Leeuwin* (AA704745)

**Aus 367** [1040/2013]

Insert depth, 10<sub>7</sub>m, enclosed by contour 21° 47'.86 S 150° 05'.58 E

Delete depth, 14<sub>2</sub>m, and enclosing contour 21° 47'.7 S 150° 05'.6 E

**Aus 822** [779/2012]

Insert depth, 10<sub>7</sub>m, enclosed by contour 21° 47'.86 S 150° 05'.58 E

Delete depth, 14<sub>2</sub>m, and enclosing contour 21° 47'.7 S 150° 05'.6 E

**Aus 823** [629/2012]

Insert depth, 10<sub>7</sub>m, enclosed by contour 21° 47'.86 S 150° 05'.58 E

Delete depth, 14<sub>2</sub>m, and enclosing contour 21° 47'.7 S 150° 05'.6 E

**AX 00367S** [1040/2013]

Insert depth, 10<sub>7</sub>m, enclosed by contour 21° 47'.86 S 150° 05'.58 E

Delete depth, 14<sub>2</sub>m, and enclosing contour 21° 47'.7 S 150° 05'.6 E

**AX 00822S** [779/2012]

Insert depth, 10<sub>7</sub>m, enclosed by contour 21° 47'.86 S 150° 05'.58 E

Delete depth, 14<sub>2</sub>m, and enclosing contour 21° 47'.7 S 150° 05'.6 E

**AX 00823S** [629/2012]

Insert depth, 10<sub>7</sub>m, enclosed by contour 21° 47'.86 S 150° 05'.58 E

Delete depth, 14<sub>2</sub>m, and enclosing contour 21° 47'.7 S 150° 05'.6 E

**1080\* AUSTRALIA - QUEENSLAND - Cooktown - Light buoys**  
 Maritime Safety Queensland (AA133207, AA109648)

**Aus 270 (plan, Cooktown)** [684/2013]

Substitute special cylindrical light buoy, *Fl. Y. 3s*, without topmark for light buoy 15° 27'.45 S 145° 15'.00 E  
 special cylindrical light buoy, *Fl. Y. 3s*, without topmark for light buoy 15° 27'.55 S 145° 14'.95 E

**1081\* AUSTRALIA - QUEENSLAND - Douglas Islet - Depths**  
 LADS Flight (DHDB 2500900)

**Aus 835** [949/2013]

Insert depth, 1<sub>3</sub>m, enclosed by contour 11° 16'.76 S 143° 02'.29 E  
 depth, 2m, enclosed by contour 11° 17'.68 S 143° 02'.12 E  
 depth, 0<sub>4</sub>m, and extend danger line NW to enclose 11° 18'.88 S 143° 07'.05 E  
 depth, 0<sub>8</sub>m, enclosed by contour 11° 19'.62 S 143° 06'.91 E

Delete shoal area 11° 17'.1 S 143° 02'.9 E

**Aus 839** [747/2013]

Insert depth, 1<sub>3</sub>m, enclosed by contour 11° 16'.76 S 143° 02'.29 E  
 depth, 2m, enclosed by contour 11° 17'.68 S 143° 02'.12 E  
 depth, 0<sub>4</sub>m, and extend danger line NW to enclose 11° 18'.88 S 143° 07'.05 E  
 depth, 0<sub>8</sub>m, enclosed by contour 11° 19'.62 S 143° 06'.91 E

Delete shoal area 11° 17'.1 S 143° 02'.9 E

**1082\* AUSTRALIA - QUEENSLAND - Gladstone - Pilot boarding place**  
Maritime Safety Queensland Notice 826/2013 (AA702992)

**Aus 819 [885/2013]**

Insert	pilot boarding place with magenta legend, <i>LNG</i>	23° 50'.09 S	151° 34'.67 E
--------	--	--------------	---------------

**1083\* PAPUA NEW GUINEA - Cape Ward Hunt - Light**  
National Maritime Safety Authority PNG (AA182929)

**Aus 521 [956/2013]**

Insert	light, <i>Fl.4s 65m 10M</i>	8° 03'.69 S	148° 07'.68 E
--------	-----------------------------	-------------	---------------

Delete	light	8° 03'.8 S	148° 07'.6 E
--------	-------	------------	--------------

**Aus 522 [1181/2011]**

Insert	light, <i>Fl.4s 65m 10M</i>	8° 03'.69 S	148° 07'.68 E
--------	-----------------------------	-------------	---------------

Delete	light	8° 03'.8 S	148° 07'.6 E
--------	-------	------------	--------------

**1084\* AUSTRALIA - TIMOR SEA - The Boxers - Depth northwards**  
Fugro Survey Pty Ltd (DHDB 2094554)

**Aus 309 [958/2013]**

Insert	depth, <i>94m</i> , enclosed by contour	10° 57'.72 S	128° 10'.70 E
--------	---	--------------	---------------

**Aus 311 [543/2012]**

Insert	depth, <i>94m</i> , enclosed by contour	10° 57'.72 S	128° 10'.70 E
--------	---	--------------	---------------

**AX 00309T [958/2013]**

Insert	depth, <i>94m</i> , enclosed by contour	10° 57'.72 S	128° 10'.70 E
--------	---	--------------	---------------

**AX 00309U [958/2013]**

Insert	depth, <i>94m</i> , enclosed by contour	10° 57'.72 S	128° 10'.70 E
--------	---	--------------	---------------

**AX 00311U [543/2012]**

Insert	depth, <i>94m</i> , enclosed by contour	10° 57'.72 S	128° 10'.70 E
--------	---	--------------	---------------

**1085\* AUSTRALIA - WESTERN AUSTRALIA - African Reef - Historic wreck**  
Australian Hydrographic Service (AA698524)

**Aus 751 [289/2013]**

Insert	magenta legend, <i>Historic Wk (see Note)</i>	28° 58'.1 S	114° 36'.5 E
--------	---	-------------	--------------

**1086\* AUSTRALIA - WESTERN AUSTRALIA - Albany - Light beacons**  
Albany Port Authority (AA54830, AA54644, AA54645, AA54647, AA54650, AA54655, AA54653, AA54654)

**Aus 109 [386/2013]**

Amend	light range to <i>3M</i>	35° 02'.36 S	117° 55'.07 E
	light range to <i>3M</i>	35° 02'.27 S	117° 55'.04 E
	light range to <i>4M</i>	35° 02'.67 S	117° 54'.46 E

Delete	structure colour, R	35° 02'.21 S	117° 53'.36 E
	structure colour, R	35° 02'.31 S	117° 53'.59 E
	topmark	35° 02'.79 S	117° 54'.28 E
	structure colour, R	35° 02'.47 S	117° 54'.67 E
	structure colour, R	35° 02'.16 S	117° 55'.84 E



**1087\* AUSTRALIA - WESTERN AUSTRALIA - Cape Leveque - Light**  
 Australian Maritime Safety Authority (AA305029)

<b>Aus 323</b> [36/2013]			
Amend	light range to 21M	16° 23'.8 S	122° 55'.7 E
<b>Aus 733</b> [1249/2012]			
Amend	light range to 21M	16° 23'.8 S	122° 55'.7 E
<b>Aus 4722 (INT 722)</b> [805/2013]			
Amend	light range to 21M	16° 23'.8 S	122° 55'.7 E
<b>AX 04722U</b> [805/2013]			
Amend	light range to 21M	16° 23'.8 S	122° 55'.7 E

**1088\* AUSTRALIA - WESTERN AUSTRALIA - Port Walcott - Infrastructure; depths; nav aids**  
 UKHO (AA700667)

<b>Aus 55</b> [960/2013]			
Amend	light to 3F.R	20° 34'.47 S	117° 12'.27 E
<b>Aus 326</b> [328/2013]			
Insert	accompanying block	20° 33'.5 S	117° 12'.5 E
<b>Aus 327</b> [895/2013]			
Insert	accompanying block	20° 33'.5 S	117° 12'.5 E
<b>Aus 740</b> [328/2013]			
Insert	accompanying block	20° 33'.5 S	117° 12'.5 E
<b>Aus 741</b> [894/2013]			
Insert	accompanying block	20° 33'.5 S	117° 12'.5 E

**1089 INDIAN OCEAN - Madagascar Basin - Depth**  
 BA Notice 44/4646/2013 (AA703006)

<b>Aus 4070 (INT 70)</b> [189/2013]			
Insert	depth, 239m, and extend contour W to enclose	27° 29'.1 S	46° 16'.6 E
Delete	depth, 490m	27° 45'.0 S	46° 30'.0 E

**1090\* AUSTRALIA - VICTORIA - Port Fairy to Warrnambool - Depths**  
 Fugro LADS (AA701636)

**Aus 141 [588/2013]**

Insert	depth, $9\frac{1}{4}m$ , enclosed by contour	38° 22'.22 S	142° 22'.41 E
	depth, $3m$ , enclosed by contour	38° 23'.76 S	142° 26'.52 E
	depth, $1\frac{1}{5}m$ , enclosed by contour	38° 21'.57 S	142° 22'.74 E
	depth, $0\frac{1}{2}m$ , enclosed by contour	38° 23'.21 S	142° 15'.28 E
	depth, $1\frac{1}{6}m$ , enclosed by contour	38° 22'.02 S	142° 17'.52 E
	rock which covers and uncovers and extend danger line S to enclose	38° 21'.68 S	142° 19'.79 E
Delete	depth, $1\frac{1}{4}m$ , and enclosing contour	38° 23'.1 S	142° 15'.2 E
	depth, $2\frac{1}{3}m$	38° 23'.2 S	142° 15'.2 E

**Aus 141 (plan, Port Fairy) [588/2013]**

Insert	depth, $0\frac{1}{7}m$ , enclosed by contour	38° 23'.211 S	142° 15'.277 E
--------	--	---------------	----------------

**Aus 349 [1178/2010]**

Insert	depth, $3m$ , and extend contour S to enclose	38° 23'.76 S	142° 26'.52 E
	depth, $1\frac{1}{5}m$ , enclosed by contour	38° 21'.57 S	142° 22'.74 E
Substitute	depth, $0\frac{1}{7}m$ , for depth, $1\frac{1}{4}m$	38° 23'.2 S	142° 15'.3 E
Delete	depth, $6\frac{1}{7}m$	38° 21'.7 S	142° 22'.9 E
	depth, $6\frac{1}{4}m$	38° 23'.9 S	142° 26'.6 E

**1091\* AUSTRALIA - VICTORIA - Port Phillip - Port Melbourne Channel - Nav aids***Former Notice - 731(P)/2013 is cancelled*

Victorian Notice 128/2013 (AA701882, AA701883, AA704476)

*Note: the change to prohibited anchorage area will be incorporated in NE of Aus 143 and Aus 155 to be published shortly.***Aus 143 [961/2013]**

Insert	special light beacon, VQ(4)Y.4s T2, with topmark	38° 00'.00 S	144° 54'.87 E
Substitute	special light beacon, VQ(4)Y.4s T1, with topmark for light buoy	38° 00'.0 S	144° 55'.7 E
Delete	light buoy	38° 00'.0 S	144° 55'.0 E

**Aus 154 [896/2013]**

Insert	special light beacon, VQ(4)Y.4s T26, with topmark	37° 52'.685 S	144° 55'.285 E
	anchoring prohibited limit, between	37° 52'.685 S	144° 55'.285 E
		37° 52'.309 S	144° 55'.191 E
	dashed line, between	37° 52'.685 S	144° 55'.285 E
		37° 51'.912 S	144° 55'.180 E
Delete	light buoy	37° 52'.64 S	144° 55'.29 E
	anchoring prohibited limit, between	37° 52'.69 S	144° 55'.29 E
		37° 52'.64 S	144° 55'.29 E
		37° 52'.31 S	144° 55'.19 E
	dashed line, between	37° 52'.63 S	144° 55'.29 E
		37° 51'.91 S	144° 55'.18 E

**Aus 155 [961/2013]**

Insert	special light beacon, VQ(4)Y.4s T2, with topmark	38° 00'.000 S	144° 54'.869 E
	special light beacon, VQ(4)Y.4s T10, with topmark	37° 57'.774 S	144° 55'.031 E
	special light beacon, VQ(4)Y.4s T15, with topmark	37° 55'.619 S	144° 55'.801 E
	special light beacon, VQ(4)Y.4s T16, with topmark	37° 55'.599 S	144° 55'.188 E
	special light beacon, VQ(4)Y.4s T26, with topmark	37° 52'.685 S	144° 55'.285 E
Substitute	special light beacon, VQ(4)Y.4s T1, with topmark for light buoy	38° 00'.00 S	144° 55'.66 E
	special light beacon, VQ(4)Y.4s T9, with topmark for light buoy	37° 57'.81 S	144° 55'.73 E
	special light beacon, VQ(4)Y.4s T20, with topmark for light buoy	37° 54'.54 S	144° 55'.22 E
Delete	light buoy	38° 00'.00 S	144° 55'.04 E
	light buoy	37° 59'.44 S	144° 55'.68 E
	light buoy	37° 59'.44 S	144° 55'.06 E
	light buoy	37° 58'.86 S	144° 55'.70 E
	light buoy	37° 58'.86 S	144° 55'.08 E
	light buoy	37° 58'.29 S	144° 55'.72 E
	light buoy	37° 58'.29 S	144° 55'.10 E
	light buoy	37° 57'.79 S	144° 55'.12 E
	light buoy	37° 57'.31 S	144° 55'.75 E
	light buoy	37° 57'.31 S	144° 55'.14 E
	light buoy	37° 56'.57 S	144° 55'.77 E
	light buoy	37° 55'.90 S	144° 55'.80 E
	light buoy	37° 55'.90 S	144° 55'.18 E
	light buoy	37° 55'.39 S	144° 55'.81 E
	light buoy	37° 55'.39 S	144° 55'.19 E
	light buoy	37° 53'.84 S	144° 55'.25 E
	light buoy	37° 53'.17 S	144° 55'.27 E
	light buoy	37° 52'.64 S	144° 55'.29 E
	light buoy	37° 56'.57 S	144° 55'.15 E

**1092\* AUSTRALIA - TASMANIA - Cat Island - Light**

Australian Maritime Safety Authority (AA108484)

**Aus 487 [810/2013]**

Amend light range to 16M

39° 57'.0 S

148° 21'.2 E

**Aus 800 [47/2013]**

Amend light range to 16M

39° 57'.0 S

148° 21'.2 E

**Aus 4644 (INT 644) [895/2012]**

Amend light range to 16M

39° 57'.0 S

148° 21'.2 E

**1093\* AUSTRALIA - TASMANIA - Port Latta - Depths**

HydroSurvey Australia (DHDB 1852550)

**Aus 178 (plan, Port Latta) [901/2013]**

Insert accompanying block

40° 49'.8 S

145° 23'.5 E

**1094\* AUSTRALIA - TASMANIA - Swan Island - Historic wreck**

Australian Hydrographic Service (AA698532)

**Aus 798 [1015/2011]**Insert magenta legend, *Historic Wk* (see Note)

40° 42'.9 S

148° 08'.5 E

**1095(T)/2013 AUSTRALIA - NEW SOUTH WALES - Botany Bay - Kurnell - Harbour works; dredging operations**

*Date* - Until 28 February 2014

Sydney Ports Corporation Notice 34/2013, 35/2013 (AA703107, AA703108)

Harbour works are in progress at the Caltex berths. No1 berth is closed and will be unavailable for the duration of the works.

The dredge *Machiavelli* is conducting dredging operations in an area bounded by the following positions:

34° 00'.14 S 151° 12'.72 E

33° 59'.94 S 151° 12'.54 E

33° 59'.40 S 151° 12'.54 E

33° 59'.31 S 151° 12'.71 E

33° 59'.47 S 151° 13'.06 E

33° 59'.74 S 151° 13'.07 E.

A tug and barge will be on site and will deposit spoil to the spoil ground in position 33° 52'.0 S 151° 26'.0 E.

Mariners are advised to navigate with caution in the area.

**Chart temporarily affected - Aus 196 - Aus 198 - Aus 199**

**1096(T)/2013 AUSTRALIA - NEW SOUTH WALES - Newcastle - Depth information**

Former Notice - 904(T)/2013 is cancelled

Newcastle Port Corporation (AA704094)

Available depths as at 28 October 2013:

<i>Berth</i>	<i>Metres</i>	<i>Remarks</i>
Eastern Basin 1	11.5	
Eastern Basin 2 North of Ch 450	11.6	
Eastern Basin 2 South of Ch 450	11.5	
Western Basin 3	11.6	
Western Basin 4	11.6	
Channel Berth	9.7	
* Dyke 1	12.8	
* Dyke 2	12.7	
Dyke 4	16.5	
Dyke 5	16.4	
Dyke 6	5.0	
* Mayfield 4 Ch 27 to 266	11.4	
* BHP Wharf 6 to Ch 1050	7.1	
* Kooragang 2	11.6	
* Kooragang 2 North Dolphin Ch 182 to 243	11.6	
Kooragang 2 South Dolphin Ch -92 to 00	11.1	
Kooragang 3 Ch -40 to 00	11.8	
* Kooragang 3 Ch 00 to 220	13.1	
Kooragang 4	16.5	
Kooragang 5	16.5	
Kooragang 6	16.2	
Kooragang 7	16.2	
* Kooragang 8	16.3	
* Kooragang 9	16.3	
Kooragang 10	16.3	
Throsby 1	8.4	
Carrington Wharf		To be sounded as and when required
Foreshore Park Berth	5.9	
Elgo Wharf		To be sounded as and when required
<i>Channels</i>		
Entrance Approach	17.7	
Entrance Channel (18.0m)	18.0	
Entrance Channel (17.4m)	17.4	
Entrance Channel (16.8m)	16.8	
Entrance Channel (16.2m)	16.2	
Entrance Channel to Horseshoe	15.2	
Horseshoe	15.0	
Steelworks Channel to Swinging Basin	15.0	
* Swinging Basin	14.8	
Hunter River South Arm (Kooragang 6 to buoy 16)	15.0	
Hunter River South Arm (buoy 16 to buoy 20)	15.0	
Basin Cutting	12.6	
Basin Area to Eastern & Western Basin Berths	12.3	
Basin Area to 1 Throsby	9.4	
Stockton Crossing	3.6	
* Indicates new or revised entry.		

**Chart temporarily affected - Aus 207 - Aus 208****1097(T)/2013 AUSTRALIA - NEW SOUTH WALES - Port Jackson - Glebe Island - Harbour works**

Date - Until 30 December 2013

Sydney Ports Corporation Notice 36/2013 (AA703105)

Repair works on the Glebe Island Bridge (33° 52'.10 S 151° 11'.15 E) are in progress.

The eastern channel is closed to traffic and is marked by special spar light buoys, *Fl.Y.3s*, across both entrances to the channel. The western channel is open to traffic.

Mariners are advised to navigate with caution in the area.

**Chart temporarily affected - Aus 200 - Aus 202 - AX 00202T**

**1098(T)/2013 AUSTRALIA - QUEENSLAND - Cape Tribulation - Wreck; exclusion zone***Former Notice* - 1055(T)/2013 is cancelled

Maritime Safety Queensland Notice 831(T)/2013 (AA703110)

A wreck exists in position 16° 07'.64 S 145° 31'.22 E.

Salvage operations are in progress and a 1852m radius exclusion zone exists around the wreck.

Mariners are advised to navigate with caution in the area.

**Chart temporarily affected - Aus 831 - AXA 0830T****1099(T)/2013 AUSTRALIA - QUEENSLAND - Fitzalan Passage - Light buoy re-established***Former Notice* - 863(T)/2013 is cancelled

Maritime Safety Queensland Notice 838/2013 (AA702938)

Cancel this notice on receipt.

**Chart formerly affected - Aus 252 - Aus 253 - Aus 254****1100(T)/2013 AUSTRALIA - QUEENSLAND - Gold Coast - Nerang River - Harbour works***Former Notice* - 1013(T)/2013 is cancelled

Maritime Safety Queensland Notice 327(T)/2013, 856(T)/2013 (AA668391, AA703970)

Construction works on the Gold Coast bridge are in progress.

The *F.Bu* lights in positions 27° 58'.62 S 153° 25'.27 E and 27° 58'.61 S 153° 25'.28 E are unlit.

Lateral light buoys will be positioned to guide vessels through the construction zone and beneath the relevant bridge navigation span as required. The temporary navigation span clearance is 4.8m HAT.

Mariners are advised to navigate with caution in the area.

**Chart temporarily affected - Aus 230****1101(T)/2013 AUSTRALIA - QUEENSLAND - Hay Point - AIS trial***Date* - Until 15 January 2014

Maritime Safety Queensland Notice 827(T)/2013 (AA703038, AA703683)

AIS exist as follows:

<i>MMSI</i>	<i>Position (WGS84 datum)</i>	<i>Remarks</i>	<i>Type</i>
995036068	21° 15'.96 S 149° 19'.70 E	Starboard lateral mark	Virtual
995036069	21° 16'.22 S 149° 19'.78 E	Port lateral mark	Virtual
995036067	21° 15'.61 S 149° 19'.54 E	Special mark	Virtual
995031021	21° 15'.33 S 149° 23'.18 E	Port lateral mark	Synthetic

**Chart temporarily affected - Aus 249 - Aus 250 - AX 00249S****1102(T)/2013 AUSTRALIA - QUEENSLAND - Mackay - Shoaling***Former Notice* - 858(T)/2012 is cancelled

Maritime Safety Queensland Notice 868(T)/2013 (AA704548)

Shoaling, with a least depth of 8m, exists in position 21° 06'.36 S 149° 15'.05 E.

Mariners are advised to navigate with caution in the area.

**Chart temporarily affected - Aus 250**

**1103(T)/2013 AUSTRALIA - QUEENSLAND - Mooloolaba - Shoaling**

*Former Notice* - 1057(T)/2013 is cancelled

Maritime Safety Queensland Notice 791(T)/2013, 833(T)/2013 (AA699723, AA702963)

A least depth of *2.3m* exists within the main channel to Mooloolah River.

A least depth of *2.4m* exists midway between light beacons No1 (26° 40'.81 S 153° 07'.94 E) and No3 (26° 40'.86 S 153° 08'.01 E).

A least depth of *1.5m* exists at the western side of the channel between light beacons No5 (26° 40'.92 S 153° 08'.09 E) and No8 (26° 41'.01 S 153° 08'.12 E).

Mariners are advised to navigate with caution in the area.

**Chart temporarily affected - Aus 235**

**1104(T)/2013 AUSTRALIA - QUEENSLAND - Mooloolaba - Light beacon damaged**

Maritime Safety Queensland Notice 832(T)/2013 (AA702961)

The No8 light beacon (26° 41'.01 S 153° 08'.12 E) has been damaged; a temporary light, *Fl.R.2-5s*, exists on the beacon.

**Chart temporarily affected - Aus 235**



**1105(T)/2013 AUSTRALIA - QUEENSLAND - Moreton Bay - Brisbane River - Depth information**

Former Notice - 1058(T)/2013 is cancelled  
Brisbane Port Corporation (AA704716)

Available depths and under keel clearances (UKC) at 31 October 2013:

<i>Berth</i>	<i>Metres</i>	<i>Remarks</i>
Fisherman Islands No12	13.8	
* Fisherman Islands No11	13.7	
* Fisherman Islands No10	13.2	
Fisherman Islands No9	13.9	
Fisherman Islands No8	14.0	
Fisherman Islands No7	14.0	
Fisherman Islands No6	14.2	
Fisherman Islands No5	14.0	
Fisherman Islands No4	14.0	
Fisherman Islands No3	14.0	
Fisherman Islands No2	14.0	
* Fisherman Islands No1	13.7	
Fisherman Islands Grain and Woodchip	13.1	
Caltex Fisherman Islands	14.5	
* Fisherman Islands Coal	14.0	
Fisherman Islands General Purpose	11.0	
* BP Luggage Point	14.3	
Caltex Products	10.1	
* Cement Australia Co Wharf	9.3	
BP Products	10.6	
* Shell	10.9	
Pacific Terminals	10.7	
* Incitec North	10.0	
Incitec South	10.3	
* Pinkenba 1	9.7	
* Pinkenba 2	9.7	
Riverside Marina	-	
Sugar Terminal	9.8	
Cairncross Fitting Out Wharf	7.2	
* Cairncross Breasting Wharf	4.9	
Brisbane Naval Wharf	4.3	
Maritime No1	9.0	
* Hamilton No4	10.1	
Hamilton No1	8.7	
Brisbane Cruise Ship Terminal	8.7	
	<i>Metres</i>	<i>UKC/Remarks</i>
<i>Moreton Bay:</i>		
North West Channel	15.0	2.3 (280m width)
North West Bypass Channel	9.2	1.6
* Spitfire Channel	15.0	1.5 (600m width)
East Knoll Bypass Channel	6.0	1.4
East Channel	15.0	1.5 (300m width from western side)
Main Channel (M8 - M9)	10.0	1.8
Entrance Channel (E5 - EBCN)	14.7	1.5
<i>Brisbane River:</i>		
Outer Bar Cutting	14.0	1.46
* Inner Bar Cutting	13.6	1.46
Fisherman Islands Swing Basin	13.9	1.3
River	9.1	0.6 / 0.9 (draft/tide)
Cement Australia Swing Basin	9.1	0.6 / 0.9 (draft/tide)
Pinkenba Swing Basin	9.1	0.6 / 0.9 (draft/tide)
Hamilton Swing Basin	9.0	0.6 / 0.9 (draft/tide)
* Indicates new or revised entry.		

**Chart temporarily affected - Aus 235 - Aus 236 - Aus 237 - Aus 238 - Aus 814 - Aus 815**

**1106(T)/2013 AUSTRALIA - QUEENSLAND - Port Denison - Light buoy unlit**  
 Maritime Safety Queensland Notice 839(T)/2013 (AA703114)

The starboard lateral light buoy, *Fl.G.4s M5* (20° 02'.36 S 148° 15'.77 E), is unlit.

**Chart temporarily affected - Aus 268**

**1107(T)/2013 AUSTRALIA - QUEENSLAND - Rosslyn Bay - Dredging operations; pipeline**

*Former Notice* - 649(T)/2013 is cancelled

*Date* - Until 20 December 2013

Maritime Safety Queensland Notices 505(T)/2013, 869(T)/2013 (AA680912, AA704523)

The dredge *Darwin* is conducting dredging operations in the harbour (23° 09'.65 S 150° 47'.39 E).

Spoil will be deposited in an area within a 100m radius of position 23° 09'.13 S 150° 47'.80 E. The dredge will display appropriate lights and shapes and will monitor VHF Ch 16 and Ch 21.

A pipeline exists on the seabed between the following:

<i>Position</i>	<i>Remarks</i>
23° 09'.14 S 150° 47'.75 E	special light buoy, <i>Fl.Y.2s</i>
23° 09'.15 S 150° 47'.46 E	
23° 09'.24 S 150° 47'.42 E	special light buoy, <i>Fl.Y.2s</i>
23° 09'.35 S 150° 47'.34 E	
23° 09'.53 S 150° 47'.31 E	
23° 09'.56 S 150° 47'.35 E.	

Mariners are advised not to anchor in the vicinity of the pipeline and to navigate with caution in the area.

**Chart temporarily affected - Aus 247 - Aus 819 - Aus 820 - AX 00820S**

**1108(T)/2013 AUSTRALIA - QUEENSLAND - Shute Harbour - Rooper Inlet - Light buoy re-established**

*Former Notice* - 399(T)/2013 is cancelled

Maritime Safety Queensland Notice 853/2013 (AA703968)

Cancel this notice on receipt.

**Chart formerly affected - Aus 253**

**1109(T)/2013 AUSTRALIA - QUEENSLAND - Whitsundays - Spitfire Rock - Light beacon destroyed**

*Former Notice* - 422(T)/2011 is cancelled

Maritime Safety Queensland Notice 930(T)/2010, 837/2013 (AA500617, AA702934)

The west cardinal light beacon (20° 28'.59 S 149° 01'.70 E) has been destroyed; a west cardinal cylindrical light buoy *Q(9)15s* exists in situ.

**Chart temporarily affected - Aus 252 - Aus 254 - Aus 824**

**1110(T)/2013 AUSTRALIA - NORTHERN TERRITORY - Darwin - Wickham Point - Scientific instruments**

*Date* - Until 30 April 2014

Darwin Port Corporation Notice 196(T)/2013 (AA704163)

Scientific instruments marked by special spar light buoys, *Q.Y.*, exist in positions 12° 29'.20 S 130° 51'.61 E and 12° 30'.11 S 130° 52'.78 E.

**Chart temporarily affected - Aus 24 - Aus 26 - Aus 27 - Aus 28 - AX 00026T**

**1111(T)/2013 AUSTRALIA - NORTHERN TERRITORY - Darwin - Live firing***Date* - Until 8 November 2013

RAAF (AA693050)

Military exercise area R264A-F will be activated for a live firing from 4 to 7 November 2013.

**Chart temporarily affected - Aus 26 - Aus 29 - Aus 309 - Aus 315 - Aus 316 - Aus 318 - Aus 722 - Aus 724 - Aus 725 - AX 00026T - AX 00309T - AX 00309U - AX 00315U - AX 00722T**

**1112(T)/2013 AUSTRALIA - NORTHERN TERRITORY - Darwin - East Arm - Dredging operations***Date* - Until 1 May 2014

Darwin Port Corporation Notice 198(T)/2013 (AA704671)

The dredge *Rotterdam* is conducting dredging operations in an area bounded by the following positions:

12° 30'.01 S 130° 53'.11 E

12° 30'.30 S 130° 53'.71 E

12° 30'.19 S 130° 54'.16 E

12° 30'.33 S 130° 54'.94 E

12° 30'.47 S 130° 54'.99 E

12° 30'.65 S 130° 54'.36 E

12° 30'.40 S 130° 53'.23 E.

The dredges *Athena*, *Queen of the Netherlands* and *Vox Maxima* are conducting dredging operations in the vicinity of Walker Shoal (12° 29'.46 S 130° 52'.39 E).

The dredge *Athena* had deployed anchors marked by lights and will toe a floating pipeline marked by flashing yellow lights. The dredges *Queen of the Netherlands* and *Vox Maxima* will connect to the pipeline to receive dredge spoil.

A 250m safety zone exists around the dredges.

Mariners are advised to navigate with caution in the area.

**Chart temporarily affected - Aus 26 - Aus 28 - AX 00026T**

**1113(T)/2013 AUSTRALIA - TIMOR SEA - Evans Shoal - Drill rig southwestwards moved***Former Notice* - 778(T)/2013 is cancelledMODU *ENSCO 104* (AA703896), Australian Maritime Safety Authority Auscoast Warning 262/2013 (AA703901)

Cancel this notice on receipt.

**Chart formerly affected - Aus 310 - Aus 4721 (INT 721) - AX 00310U - AX 04721U**

**1114(T)/2013 AUSTRALIA - TIMOR SEA - Margaret Harries Banks - Drill rig***Date* - Until 24 December 2013MODU *ENSCO 104* (AA703896), Australian Maritime Safety Authority Auscoast Warning 262/2013 (AA703901)

Drill rig *ENSCO 104* is conducting drilling operations in position 10° 09'.21 S 128° 49'.58 E.

**Chart temporarily affected - Aus 311 - Aus 4721 (INT 721) - AX 00311U - AX 04721U**

**1115(P)/2013 AUSTRALIA - WESTERN AUSTRALIA - Dampier - Woodside Channel - Nav aids**  
Dampier Port Authority 37/2013 (AA703702)

Nav aids will be altered as follows:

	<i>Position</i>	<i>New Characteristic</i>
Woodside Channel Beacon	20° 26'.11 S 116° 43'.77 E	<i>Fl.R.3s</i>
W6	20° 30'.81 S 116° 43'.58 E	<i>Fl.R.3s</i>
No7	20° 32'.10 S 116° 43'.36 E	<i>Fl.R.3s</i>
No10	20° 33'.26 S 116° 43'.79 E	<i>Fl.R.3s</i>
No12	20° 34'.21 S 116° 44'.91 E	<i>Fl.R.3s</i>
No12A	20° 34'.32 S 116° 44'.81 E	<i>Fl.G.3s</i>
No14	20° 34'.80 S 116° 45'.67 E	<i>Fl.Y.3s</i>
No14A	20° 34'.88 S 116° 45'.42 E	<i>Fl.G.3s</i>
No15A	20° 35'.08 S 116° 45'.45 E	<i>Fl.G.3s</i>

**Chart which will be affected - Aus 57 - Aus 58 - Aus 59**

**1116(T)/2013 AUSTRALIA - WESTERN AUSTRALIA - Geraldton - Light buoy re-established**

*Former Notice* - 1030(T)/2013 is cancelled  
Geraldton Port Authority (AA703037)

Cancel this notice on receipt.

**Chart formerly affected - Aus 81 - Aus 751**

**1117(T)/2013 AUSTRALIA - WESTERN AUSTRALIA - Montebello Islands - Light buoys northwestwards**

*Date* - Until 1 March 2014  
Viking Seatech (AA704614)

Eight yellow mooring buoys, *Fl.Y.5s*, exist within a 1M radius of position 19° 54'.35 S 115° 16'.12 E.

**Chart temporarily affected - Aus 328**

**1118(T)/2013 AUSTRALIA - WESTERN AUSTRALIA - North West Cape - Wells and pipelines northwards**

*Date* - Until 26 December 2013  
SapuraClough Offshore (AA703831)

Vessels *Stellaprima* and *SapuraKencana Constructor* are conducting works, which include the installation of subsea structures and flowlines, in an area bounded by the following positions:

21° 33'.0 S 114° 04'.5 E  
21° 33'.0 S 114° 10'.0 E  
21° 30'.0 S 114° 10'.0 E  
21° 30'.0 S 114° 04'.5 E.

**Chart temporarily affected - Aus 328 - Aus 329 - Aus 744**

**1119(T)/2013 AUSTRALIA - WESTERN AUSTRALIA - Seringapatam Reef - Seismic survey eastwards**

*Date* - Until 7 January 2014  
CGG (AA704532)

MV *Geo Caspian*, with a 9000m towed array, and support vessels *Pacific Parrot* and *Browse Invincible* are conducting a survey in the area bounded by the following positions:

14° 03'.5 S 123° 31'.7 E  
12° 46'.3 S 123° 31'.8 E  
12° 46'.4 S 124° 03'.4 E  
14° 03'.5 S 124° 03'.4 E.

**Chart temporarily affected - Aus 319 - Aus 320 - Aus 322 - Aus 4721 (INT 721) - Aus 4722 (INT 722) - AX 00319U - AX 00322U - AX 04721U - AX 04722U**

**1120(T)/2013 AUSTRALIA - SOUTH AUSTRALIA - Penneshaw - Dredging operations**

Date - Until 12 December 2013

Department of Planning, Transport and Infrastructure SA Notice 29/2013 (AA704001)

Dredging operations are in progress in the vicinity of position 35° 43'.01 S 137° 56'.61 E between 2100 and 0900.

A floating pipeline exists between 35° 43'.01 S 137° 56'.61 E and 35° 43'.28 S 137° 56'.79 E. During the day the pipeline will be lowered to the seabed.

The dredge will display appropriate lights and shapes and will monitor VHF Ch 13, Ch 16 and Ch 82.

Mariners are advised to navigate with caution in the area.

**Chart temporarily affected - Aus 125**

**1121(P)/2013 AUSTRALIA - SOUTH AUSTRALIA - Spilsby Island - Shoal depths**

LADS Flight (DHDB 42759)

Shoal depths have been reported to exist as follows:

Depth	Position
1.2m	34° 42'.08 S 136° 21.34 E
4.8m	34° 42'.04 S 136° 22.04 E.

**Chart which will be affected - Aus 343 - Aus 485 - Aus 776 - AX 00343S - AX 00776S**

**1122(T)/2013 AUSTRALIA - VICTORIA - Port Phillip - Chelsea - Buoy off station**

Victorian Notice 146(T)/2013 (AA704718)

No2 buoy (38° 03'.07 S 145° 04'.53 E) is off station.

**Chart temporarily affected - Aus 143 - Aus 155**

**1123(T)/2013 AUSTRALIA - VICTORIA - Warrnambool - Seismic survey southwards**

Date - Until 31 December 2013

WHL Energy Ltd (AA703824, AA7033825), Origin Energy (AA704830)

MV *Viking II*, with a 6100m towed array, support vessels MV *Pacific Protector* and MV *Northern Star* will be conducting a survey commencing 13 November 2013 in an area bounded by the following positions:

38° 40'.0 S 141° 45'.0 E  
 38° 55'.0 S 142° 50'.0 E  
 38° 50'.0 S 143° 00'.0 E  
 38° 50'.0 S 143° 15'.0 E  
 41° 15'.0 S 143° 10'.0 E  
 39° 45'.0 S 141° 05'.0 E.

**Chart temporarily affected - Aus 349 - Aus 4728 (INT 728)**

**1124(T)/2013 AUSTRALIA - TASMANIA - Cape Barren Island - Scientific instruments**

Former Notice - 1062(T)/2012 is cancelled

Marine and Safety Tasmania Notice M104/2013 (AA701665)

NTM 1074(T)/2013 refers.

Cancel this notice on receipt.

**Chart formerly affected - Aus 487 - Aus 798 - Aus 800**

**1125(T)/2013 AUSTRALIA - TASMANIA - D'Entrecasteaux Channel - Marine farm**

*Date* - Until 30 November 2013

Marine and Safety Tasmania Notice 110/2013 (AA704160)

Mariners are advised the marine farm has extended its boundaries as follows:

43° 18'.27 S 147° 06'.09 E

43° 18'.20 S 147° 06'.64 E

43° 19'.01 S 147° 06'.64 E

43° 18'.95 S 147° 06'.09 E.

**Chart temporarily affected - Aus 173**

**1126(T)/2013 AUSTRALIA - TASMANIA - Macquarie Harbour - Kelly Channel - Light beacon unlit**  
Marine and Safety Tasmania Notice 108/2013 (AA703534)

No1 light beacon, Q.3m 3M (42° 14'.32 S 145° 14'.06 E), is unlit.

**Chart temporarily affected - Aus 177**

## HYDROGRAPHIC REPORTS

<i>Locality</i>	<i>Report</i>	<i>Ship/Authority</i>	<i>Observer</i>
QUEENSLAND- Bates Rock	Depth	HMAS <i>Leeuwin</i>	
TASMANIA- Marion Narrows Denison Canal	Nav aids		A Boon



**NAVIGATION WARNINGS**

*The following radio messages have been received during the period to 1 November 2013. Signal copies of these messages may be destroyed. It is recommended that the reprint of Navigational Warnings should be kept in a file or a book divided into areas. Cancellation should be made on receipt of signals and reprints.*

*Rigs on location other than those listed in the latest Section III summary are the subject of Radio Navigational Warnings. Rigs in transit will not be the subject of Warnings.*

**AUSCOAST WARNING**

247 Cancelled.  
 248 Cancelled.  
 249 Cancelled.  
 250 Cancelled.  
 251 Cancelled.  
 252 Cancelled.  
 253 Cancelled.  
 254 Cancelled.  
 255 Cancelled.  
 256 Cancelled.  
 257 Exclusion Zone established 1M in diameter from position 16° 07'.643 S 145° 31'.217 E for diving operations between the hours 2100UTC to 0600UTC daily. Vessels requested to reduce speed to 5kts. Emergency wreck marking buoy deployed in position 16° 07'.7 S 145° 31'.2 E.  
 258 Cancelled.  
 259 Cancelled.  
 260 Cancelled.  
 261 Cancelled.  
 262 Drill rig *Ensco 104* in position 10° 09'.20 S 128° 49'.60 E. 2.5M clearance requested.  
 263 Unmarked tide gauge in position 10° 30'.03 S 141° 57'.10 E  
 264 Angel platform in position 19° 29'.92 S 116° 35'.88 E AIS and racon inoperative.  
 265 Cancelled.  
 266 Cancelled.  
 267 Cancelled.  
 268 12 yellow buoys *Fl.5s* established within bounded area 19° 52'.6 S 115° 14'.5 E, 19° 55'.9 S 115° 14'.5 E, 19° 55'.9 S 115° 17'.9 E, 19° 52'.6 S 115° 17'.9 E. 2M clearance requested.

**NAVAREA X WARNINGS**

058 Cancelled.  
 059 Cancelled.

**Navigational warnings in force as at 010001UTC NOV 13.**

**Auscoast**

**2013** 024 099 134 217 230 234 236 237 238 244 246 257 262 263 264 268

**Navarea X**

**2013** 037

**Summary of mobile drilling rigs as at 010001UTC NOV 13.**

<i>Name</i>	<i>Position</i>
Ensco 104	10° 09'.20 S 128° 49'.60 E
Noble Clyde Boudreaux	13° 49'.00 S 123° 19'.35 E
Jack Bates	13° 24'.59 S 122° 59'.02 E
Transocean Legend	13° 19'.00 S 122° 16'.45 E
Atwood Eagle	19° 42'.41 S 115° 52'.53 E
Ensco 109	12° 40'.30 S 124° 32'.30 E
Atwood Falcon	20° 04'.23 S 115° 11'.00 E
Atwood Osprey	20° 24'.50 S 114° 51'.00 E
Deepwater Frontier	19° 49'.91 S 114° 34'.12 E
Nan Hai 6	21° 31'.20 S 114° 05'.10 E

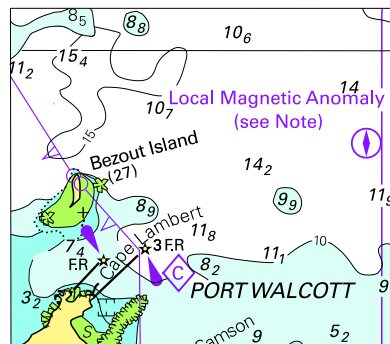
**NAVAREA XIV WARNINGS**

086 Cancelled.  
087 Cancelled.  
088 Cancelled.  
089 South Pacific Ocean, Kermadec Trench. RV *Yokosuka* call sign JCOY conducting underwater operations between 24 Oct 2013 and 1 Nov 2013 in an area bounded by:  
25° 40'.0 S 178° 00'.0 W  
25° 40'.0 S 173° 00'.0 W  
29° 00'.0 S 173° 00'.0 W  
29° 00'.0 S 178° 00'.0 W.  
090 Cancelled.  
091 Cancelled.

**Navarea XIV warnings in force as at 010001UTC NOV 13.**

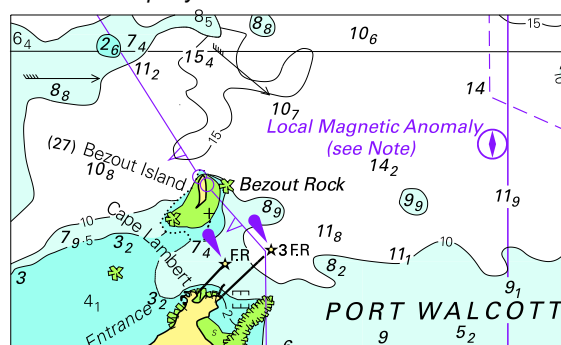
**2013** 089

To accompany Australian Notice to Mariners 1088/2013



© Commonwealth of Australia 2013  
Block for chart Aus 326 (51.0 x 44.8mm)

To accompany Australian Notice to Mariners 1088/2013



© Commonwealth of Australia 2013  
 Block for chart Aus 327 (74.0 x 44.0mm)

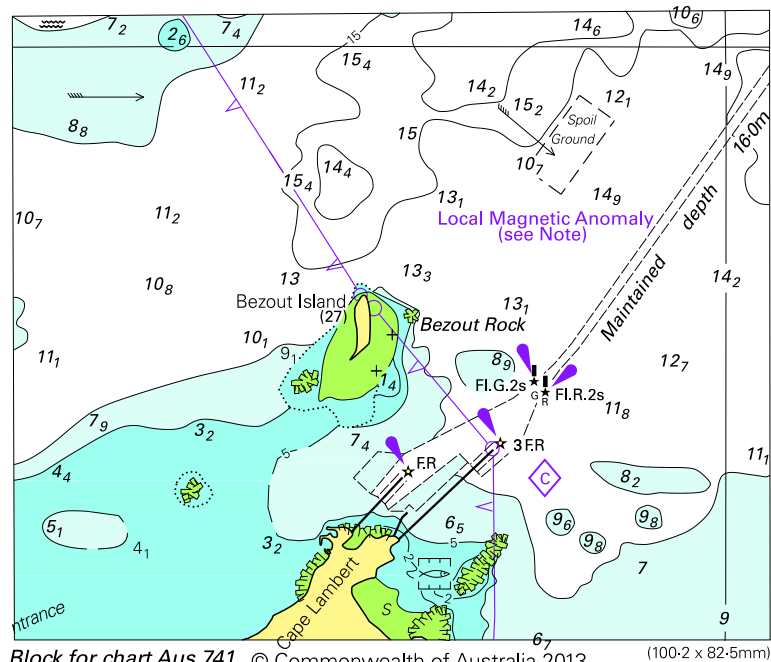
*To accompany Australian Notice to Mariners 1088/2013*



© Commonwealth of Australia 2013

(100.2 x 82.5mm)

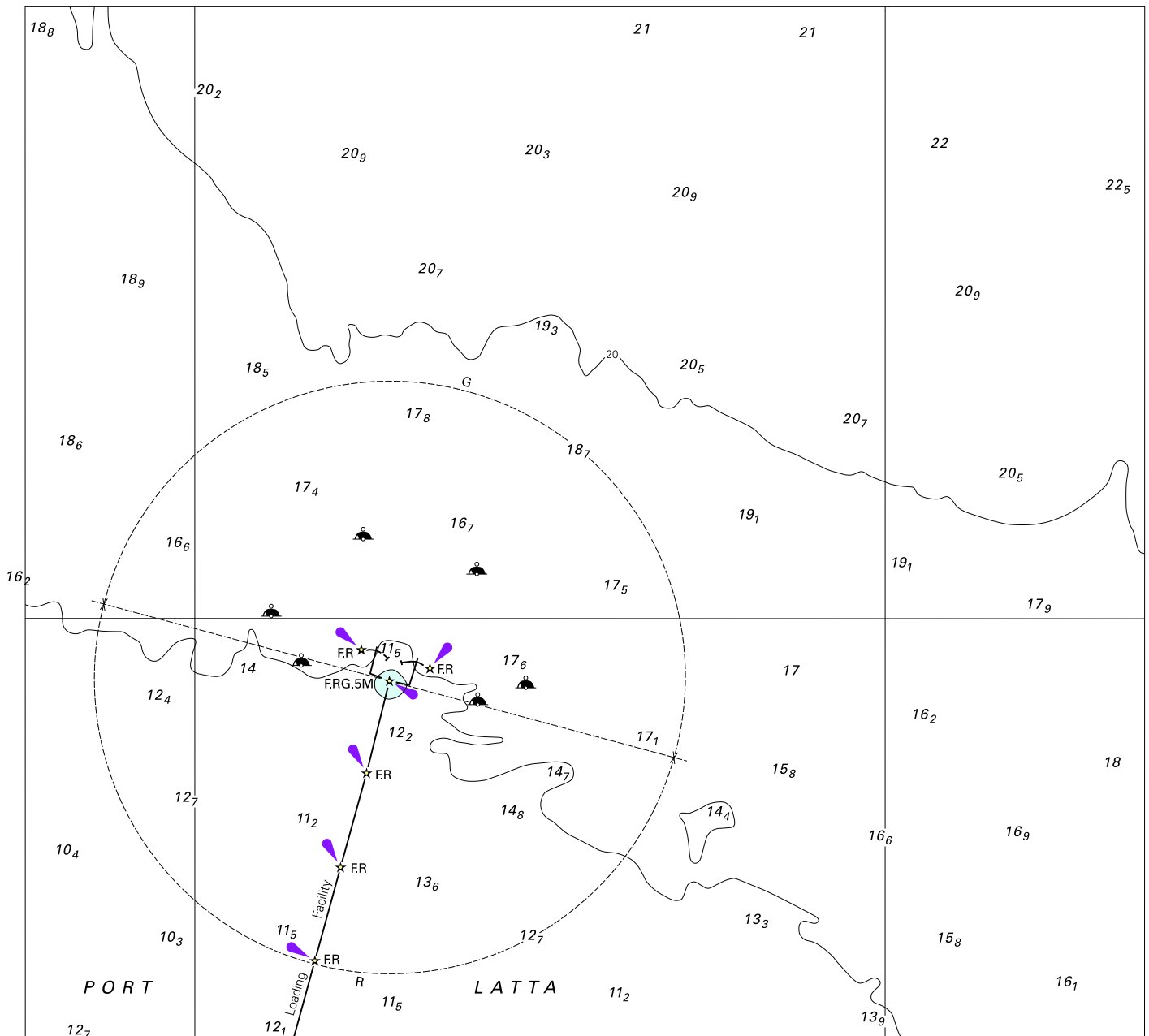
To accompany Australian Notice to Mariners 1088/2013



Block for chart Aus 741 © Commonwealth of Australia 2013

(100.2 x 82.5mm)

To accompany Australian Notice to Mariners 1093/2013



Block for chart Aus 178

© Commonwealth of Australia 2013

(182.3 x 167.8mm)