



18 October 2013

Edition 21

Australian Notices to Mariners are the authority for correcting Australian Charts and Publications

AUSTRALIAN NOTICES TO MARINERS

Notices 1038 - 1076



Published fortnightly by the Australian Hydrographic Service

Commodore B.K. BRACE RAN
Hydrographer of Australia

SECTIONS.

- I. Australian Notices to Mariners, including blocks and notes.
- II. Hydrographic Reports.
- III. Navigational Warnings.

SUPPLEMENTS.

- I. Tracings
- II. Cumulative List of Australian Notices to Mariners.
- III. Cumulative List of Temporary and Preliminary Australian Notices to Mariners.
- IV. Temporary and Preliminary Notices in force.
- V. Amendments to Admiralty List of Lights and Fog Signals (Vol K), Radio Signals (NP 281(2), 282, 283(2), 285, 286(4)) and Sailing Directions (NP 9, 13, 14, 15, 33, 34, 35, 36, 39, 44, 51, 60, 61, 62, 100, 136).

© Commonwealth of Australia 2013

This work is copyright. Apart from any use permitted under the Copyright Act 1968, no part may be reproduced by any process, adapted, communicated or commercially exploited without prior written permission from The Commonwealth represented by the Australian Hydrographic Service.

IMPORTANT NOTICE

This edition of Notices to Mariners includes all significant information affecting AHS products which the AHS has become aware of since the last edition. All reasonable efforts have been made to ensure the accuracy and completeness of the information, including third party information, on which these updates are based. The AHS regards third parties from which it receives information as reliable, however the AHS cannot verify all such information and errors may therefore exist. The AHS does not accept liability for errors in third party information.

GENERAL INSTRUCTIONS

The substance of these notices should be inserted on the charts affected.

Bearings are referred to the true compass and are reckoned clockwise from North; those relating to lights are given as seen by an observer from seaward. Positions quoted in permanent notices relate to the horizontal datum for the chart(s). When preliminary or temporary notices affect multiple charts, positions will be provided in relation to only one horizontal datum and that datum will be specified. When the multiple charts do not have a common horizontal datum, mariners will be required to adjust the position(s) for those charts not on the specified datum. The range quoted for a light is its nominal range. Depths are with reference to the chart datum of each chart. Heights are above mean high water springs or mean higher high water, as appropriate.

The capital letter (P) or (T) after the number of any notice denotes a preliminary or temporary notice respectively, which are contained separately at the end of the permanent notices. A star (*) adjacent to the number of a notice indicates that the notice is based on original information.

REPORTING OF DANGERS

Mariners are particularly requested to notify the AUSTRALIAN HYDROGRAPHIC SERVICE, Locked Bag 8801 Wollongong, NSW 2500 (Fax 02-4223 6599, e-mail Hydro.NTM@defence.gov.au or, alternatively by filling in and submitting the [Hydrographic Notes](#) forms located on the web site – www.hydro.gov.au), immediately on the discovery of new dangers or suspected dangers to navigation. For changes or defects in aids to navigation notify AusSAR (Fax 02-6230 6868 or email rccaus@amsa.gov.au).

AUTHORISED USE

Copies of Australian notices are available free of charge from the Australian Hydrographic Service (AHS) website (www.hydro.gov.au) and through the eNotices (email) service (www.hydro.gov.au/enotices/enotices.htm).

Individual Notices may be copied for the purpose of inserting Notice substance on official charts and publications. Paper copies may be printed by chart agents and distributed to customers on a cost recovery basis. Participating chart agents are listed on the AHS website as providing a 'Paper Notices to Mariners' service (www.hydro.gov.au/prodserv/distributors/distributors.htm). Copies of the notices may not be sold for profit without prior written agreement.

NUMERICAL INDEX OF NOTICES TO MARINERS

Edition No 21

Notices	Aus Chart, INT Chart, ENC Cell, AHP, BA Pubs
1038	Aus 63, 700, AU 5637P1
1039	Aus 222
1040	Aus 367, 490, AX 00367S
1041	Aus 293, 299
1042	Aus 244, 245
1043	Aus 246
1044	Aus 4621, INT 621, AX 04621U
1045	Aus 388
1046	Aus 543, 666
1047	Aus 684
1048	Aus 26, 28, AX 00026T
1049	Aus 50
1050	Aus 72
1051	Aus 113, 117, AX 00117T
1052	Aus 114, 117, 754, AX 00117T, 00754S, AXA 0754S
1053	Aus 4723, INT 723, AX 04723U
1054(T)	Aus 262, 263, AX 63262
1055(T)	Aus 831, AXA 0830T
1056(T)	Aus 244, 245
1057(T)	Aus 235
1058(T)	Aus 235, 236, 237, 238, 814, 815
1059(T)	Aus 235, 236
1060(T)	Aus 260, 261, 367, 820, 822, AX 00260T, 00260S, 00367S, 00820S, 00822S
1061(T)	Aus 257
1062(T)	Aus 389, 651, 4622, INT 622
1063(P)	Aus 26, 28, AX 00026T
1064(T)	Aus 328, 4723, INT 723, AX 04723U
1065(T)	Aus 328, 4723, 4725, INT 723, 725, AX 04723U
1066(T)	Aus 58, 59, 60
1067(T)	Aus 327, 741
1068(T)	Aus 52, 54
1069(T)	Aus 327, 4723, INT 723, AX 04723U
1070(T)	Aus 4708, 4714, 4723, INT 708, 714, 723, AX 04708U, 04714U, 04723U
1071(T)	Aus 143
1072(P)	Aus 151, 152
1073(T)	Aus 173, 795, 796
1074(T)	Aus 487, 798, 800
1075(T)	Aus 169
1076(T)	Aus 170, 766, 797

NUMERICAL INDEX OF CHARTS AFFECTED

Edition No 21

Aus Chart	Notices
Aus 26	1048, 1063(P)
Aus 28	1048, 1063(P)
Aus 50	1049
Aus 52	1068(T)
Aus 54	1068(T)
Aus 58	1066(T)
Aus 59	1066(T)
Aus 60	1066(T)
Aus 63	1038
Aus 72	1050
Aus 113	1051
Aus 114	1052
Aus 117	1051, 1052
Aus 143	1071(T)
Aus 151	1072(P)
Aus 152	1072(P)
Aus 169	1075(T)
Aus 170	1076(T)
Aus 173	1073(T)
Aus 222	1039
Aus 235	1057(T), 1058(T), 1059(T)
Aus 236	1058(T), 1059(T)
Aus 237	1058(T)
Aus 238	1058(T)
Aus 244	1042, 1056(T)
Aus 245	1042, 1056(T)
Aus 246	1043
Aus 257	1061(T)
Aus 260	1060(T)
Aus 261	1060(T)
Aus 262	1054(T)
Aus 263	1054(T)
Aus 293	1041
Aus 299	1041
Aus 327	1067(T), 1069(T)
Aus 328	1064(T), 1065(T)
Aus 367	1040, 1060(T)
Aus 388	1045
Aus 389	1062(T)
Aus 487	1074(T)
Aus 490	1040
Aus 543	1046
Aus 651	1062(T)
Aus 666	1046
Aus 684	1047
Aus 700	1038
Aus 741	1067(T)
Aus 754	1052
Aus 766	1076(T)
Aus 795	1073(T)
Aus 796	1073(T)
Aus 797	1076(T)
Aus 798	1074(T)
Aus 800	1074(T)

Aus Chart	Notices
Aus 814	1058(T)
Aus 815	1058(T)
Aus 820	1060(T)
Aus 822	1060(T)
Aus 831	1055(T)
Aus 4621	1040, 1044
Aus 4622	1062(T)
Aus 4708	1070(T)
Aus 4714	1070(T)
Aus 4723	1053, 1064(T), 1065(T), 1069(T), 1070(T)
Aus 4725	1065(T)
AX 00026T	1048, 1063(P)
AX 00117T	1051, 1052
AX 00260S	1060(T)
AX 00260T	1060(T)
AX 00367S	1040, 1060(T)
AX 00754S	1052
AX 00820S	1060(T)
AX 00822S	1060(T)
AX 04621U	1040, 1044
AX 04708U	1070(T)
AX 04714U	1070(T)
AX 04723U	1053, 1064(T), 1065(T), 1069(T), 1070(T)
AX 63262	1054(T)
AXA 0754S	1052
AXA 0830T	1055(T)

INT Chart	Notices
INT 621	1040, 1044
INT 622	1062(T)
INT 708	1070(T)
INT 714	1070(T)
INT 723	1053, 1064(T), 1065(T), 1069(T), 1070(T)
INT 725	1065(T)

ENC Cell	Notices
AU 5637P1	1038

1038 AUSTRALIA - Product

Australian Hydrographic Service (AA701182), UKHO (AA701702)

New Electronic Navigation Chart (Aus ENC)

Cell Name	Released	Title
AU5637P1	October 2013	Papua New Guinea - North East Coast - Losuia

New Edition to be published shortly

Chart	Title	Scale	Expected Publication Date
Aus 63	Australia – North West Coast – Western Australia – Mary Anne Passage	1:50 000	1 November 2013
Aus 700	Australia – North Coast – Queensland – Western Approaches to Torres Strait	1:150 000	1 November 2013

Admiralty publication

NP No	Title	Date	Remarks
NP284	Admiralty List of Radio Signals. Meteorological Observation Stations.	24/10/2013	The 2012/13 edition is cancelled.

For further details refer to the AHS website at www.hydro.gov.au for new edition and new chart stock arrival information.

When placing orders with a chart agent, mariners should advise whether their order pertains to the current edition or the new edition.

1039* AUSTRALIA - NEW SOUTH WALES - Clarence River - North Channel - Obstruction; light buoy

Former Notice - 299(T)/2013 is cancelled

Port of Clarence River (Yamba) Notice 11/2013 (AA699124)

Aus 222 [629/2013]

Insert	depth, 2 ₂ m, enclosed by danger circle with legend, <i>Obstn</i>	29° 25'.388 S	153° 21'.202 E
	out of position special cylindrical light buoy, Q(4)Y.6s, without topmark	29° 25'.388 S	153° 21'.202 E
Delete	depth, 4 ₄ m	29° 25'.39 S	153° 21'.19 E

1040* AUSTRALIA - QUEENSLAND - Bell Cay - Obstruction southwards

Former Notice - 759(T)/2013 is cancelled

Great Barrier Reef Marine Park Authority (AA700721)

Aus 367 [1240/2012]

Insert	#, centred on	22° 09'.94 S	151° 20'.65 E
--------	---------------	--------------	---------------

Aus 490 [847/2013]

Insert	#, centred on	22° 09'.94 S	151° 20'.65 E
--------	---------------	--------------	---------------

AX 00367S [779/2012]

Insert	#, centred on	22° 09'.94 S	151° 20'.65 E
--------	---------------	--------------	---------------

1041* AUSTRALIA - QUEENSLAND - Ellis Channel - Hovell Bar - Depths

Maritime Safety Queensland (DHDB 2443629)

Aus 293 [952/2013]

Substitute	depth, 2 ₃ m, for depth, 2m, and enclosing contour	10° 34'.20 S	142° 15'.38 E
------------	---	--------------	---------------

Aus 299 [952/2013]

Insert	depth, 2 ₃ m	10° 34'.127 S	142° 15'.349 E
--------	-------------------------	---------------	----------------

Substitute	depth, 2 ₃ m, for depth, 2m, and enclosing contour	10° 34'.20 S	142° 15'.38 E
------------	---	--------------	---------------

Delete	depth, 2 ₉ m	10° 34'.14 S	142° 15'.35 E
--------	-------------------------	--------------	---------------

1042* AUSTRALIA - QUEENSLAND - Gladstone - Clinton Wharves to Barney Point Wharf - Depths

Former Notice - 653(T)/2011 is cancelled
Maritime Safety Queensland (DHDB 2080359)

Aus 244 (plan, Gladstone and Adjacent Wharves) [996/2013]

Insert	accompanying block A	23° 49'.2 S	151° 14'.3 E
	accompanying block B	23° 50'.2 S	151° 16'.2 E

Aus 245 [996/2013]

Insert	accompanying block	23° 49'.5 S	151° 15'.2 E
--------	--------------------	-------------	--------------

1043* AUSTRALIA - QUEENSLAND - Gladstone - South Channel - Wild Cattle Cutting - Light buoy

Maritime Safety Queensland Notice 805(T)/2013 (AA700917)

Aus 246 [795/2013]

Move	light buoy	23° 53'.66 S	151° 30'.22 E
	to	23° 53'.737 S	151° 30'.143 E

1044* AUSTRALIA - CORAL SEA - Lihou Reef - Light buoy northeastwards

Australian Bureau of Meteorology (AA699821)

Aus 4621 (INT 621) [800/2013]

Delete	light buoy	14° 48'.0 S	153° 35'.0 E
--------	------------	-------------	--------------

AX 04621U [800/2013]

Delete	light buoy	14° 48'.0 S	153° 35'.0 E
--------	------------	-------------	--------------

1045* PAPUA NEW GUINEA - Cape Girgir - Light beacon

National Maritime Safety Authority PNG (AA699728)

Aus 388 [1000/2013]

Move	light beacon	3° 48'.46 S	144° 31'.53 E
	to	3° 48'.77 S	144° 31'.87 E

Delete	depth, 3 ₉ m	3° 48'.7 S	144° 32'.2 E
--------	-------------------------	------------	--------------

Aus 388 (plan, Entrance to Sepik River) [1000/2013]

Move	light beacon	3° 48'.46 S	144° 31'.53 E
	to	3° 48'.77 S	144° 31'.87 E

1046* PAPUA NEW GUINEA - Kavieng Harbour - Nago Island to Cape Sueusat - Submarine power cable

National Maritime Safety Authority PNG Notice 48/2013 (AA700250)

Aus 543 [343/2011]

Insert	submarine cable, between	2° 36'.69 S	150° 46'.65 E
		2° 36'.28 S	150° 46'.30 E
		2° 36'.24 S	150° 46'.23 E

Aus 666 [84/2013]

Insert	submarine power cable, between	2° 36'.69 S	150° 46'.65 E
		2° 36'.28 S	150° 46'.30 E
		2° 36'.24 S	150° 46'.23 E

Aus 666 (plan, Kavieng Harbour) [84/2013]

Insert	submarine power cable, between	2° 36'.690 S	150° 46'.650 E
		2° 36'.275 S	150° 46'.300 E
		2° 36'.238 S	150° 46'.233 E

1047* PAPUA NEW GUINEA - Madehas Island - Light
National Maritime Safety Authority PNG Notice 47/2013 (AA699562)

Aus 684 (plan, Buka Passage) [686/2013]

Move	light	5° 27'.64 S	154° 38'.04 E
	to	5° 27'.632 S	154° 38'.062 E

1048* AUSTRALIA - NORTHERN TERRITORY - Darwin - Blaydin Point - Lit mooring buoys
Darwin Port Corporation Notice 181/2013 (AA699586, AA700461)

Aus 26 [1001/2013]

Insert	lit yellow barrel mooring buoy, <i>Fl. Y. 2-5s</i>	12° 30'.16 S	130° 55'.86 E
	lit yellow barrel mooring buoy, <i>Fl. Y. 2-5s</i>	12° 30'.25 S	130° 56'.02 E
	lit yellow barrel mooring buoy, <i>Fl. Y. 2-5s</i>	12° 30'.03 S	130° 53'.89 E

Delete	depth, 6 ₄ m	12° 30'.0 S	130° 53'.9 E
	depth, 6 ₁ m	12° 30'.2 S	130° 56'.0 E

Aus 28 [891/2013]

Insert	lit yellow barrel mooring buoy, <i>Fl. Y. 2-5s</i>	12° 30'.157 S	130° 55'.862 E
	lit yellow barrel mooring buoy, <i>Fl. Y. 2-5s</i>	12° 30'.250 S	130° 56'.024 E
	lit yellow barrel mooring buoy, <i>Fl. Y. 2-5s</i>	12° 30'.033 S	130° 53'.886 E

AX 00026T [1001/2013]

Insert	lit yellow barrel mooring buoy, <i>Fl. Y. 2-5s</i>	12° 30'.16 S	130° 55'.86 E
	lit yellow barrel mooring buoy, <i>Fl. Y. 2-5s</i>	12° 30'.25 S	130° 56'.02 E
	lit yellow barrel mooring buoy, <i>Fl. Y. 2-5s</i>	12° 30'.03 S	130° 53'.89 E

Delete	depth, 6 ₄ m	12° 30'.0 S	130° 53'.9 E
	depth, 6 ₁ m	12° 30'.2 S	130° 56'.0 E

1049* AUSTRALIA - WESTERN AUSTRALIA - Broome - Light buoys northwestwards
Broome Port Authority (AA699901)

Aus 50 [1245/2011]

Delete	light buoy	17° 50'.6 S	122° 02'.0 E
	light buoy	17° 51'.0 S	122° 02'.4 E
	light buoy	17° 50'.6 S	122° 02'.8 E

1050* AUSTRALIA - WESTERN AUSTRALIA - Exmouth Boat Harbour - Infrastructure
Former Notice - 72(T)/2013 is cancelled
Department of Transport WA (AA694707)

Aus 72 (plan, Exmouth Boat Harbour) [583/2013]

Insert	accompanying block	21° 57'.2 S	114° 08'.3 E
--------	--------------------	-------------	--------------

1051* AUSTRALIA - WESTERN AUSTRALIA - Fremantle - Fishing Boat Harbour - Infrastructure
Former Notice - 524(T)/2012 is cancelled
Department of Transport WA (AA690419)

Aus 113 [549/2013]

Insert	accompanying block	32° 03'.8 S	115° 44'.7 E
--------	--------------------	-------------	--------------

Aus 117 [549/2013]

Insert	accompanying block	32° 03'.8 S	115° 44'.5 E
--------	--------------------	-------------	--------------

AX 00117T [549/2013]

Insert	accompanying block	32° 03'.8 S	115° 44'.5 E
--------	--------------------	-------------	--------------

1052* AUSTRALIA - WESTERN AUSTRALIA - Success Bank to Parmelia Bank - Depths

Department of Transport WA (DHDB 2487227)

Aus 114 [889/2012]

Insert	depth, 2m, enclosed by contour	32° 08'.156 S	115° 43'.211 E
--------	--------------------------------	---------------	----------------

Aus 117 [1051/2013]

Insert	depth, 2m, enclosed by contour	32° 08'.156 S	115° 43'.211 E
	depth, 4 ₈ m, enclosed by contour	32° 05'.205 S	115° 40'.423 E

Delete	depth, 2 ₄ m	32° 08'.18 S	115° 43'.18 E
--------	-------------------------	--------------	---------------

Aus 754 [291/2013]

Insert	depth, 2m, enclosed by contour	32° 08'.16 S	115° 43'.21 E
--------	--------------------------------	--------------	---------------

AX 00117T [1051/2013]

Insert	depth, 2m, enclosed by contour	32° 08'.156 S	115° 43'.211 E
	depth, 4 ₈ m, enclosed by contour	32° 05'.205 S	115° 40'.423 E

Delete	depth, 2 ₄ m	32° 08'.18 S	115° 43'.18 E
--------	-------------------------	--------------	---------------

AX 00754S [291/2013]

Insert	depth, 2m, enclosed by contour	32° 08'.16 S	115° 43'.21 E
--------	--------------------------------	--------------	---------------

AXA 0754S [291/2013]

Insert	depth, 2m, enclosed by contour	32° 08'.16 S	115° 43'.21 E
--------	--------------------------------	--------------	---------------

1053* INDIAN OCEAN - Sunda Trench - Buoy

Australian Bureau of Meteorology (AA699821)

Aus 4723 (INT 723) [805/2013]

Delete	buoy	11° 27'.0 S	113° 36'.0 E
--------	------	-------------	--------------

AX 04723U [805/2013]

Delete	buoy	11° 27'.0 S	113° 36'.0 E
--------	------	-------------	--------------

1054(T)/2013 AUSTRALIA - QUEENSLAND - Cairns - Drilling operations

Date - Until 15 November 2013

Maritime Safety Queensland Notice 825(T)/2013 (AA702205)

Drilling operations are in progress in the Cairns channel and harbour.

Mariners are advised to navigate with caution in the area.

Chart temporarily affected - Aus 262 - Aus 263 - AX 63262

1055(T)/2013 AUSTRALIA - QUEENSLAND - Cape Tribulation - Wreck

Maritime Safety Queensland Notice 811(T)/2013 (AA701161)

A wreck exists in position 16° 07'.64 S 145° 31'.22 E.

Mariners are advised to navigate with caution in the area.

Chart temporarily affected - Aus 831 - AXA 0830T

1056(T)/2013 AUSTRALIA - QUEENSLAND - Gladstone - Light buoys repositioned

Maritime Safety Queensland Notice 778(T)/2013 (AA701517)

The light buoys have been repositioned to mark the toe lines of the new Passage Island Channel as follows:

	<i>Positions</i>	<i>Light characteristics</i>
PI1	23° 47'.58 S 151° 12'.57 E	Fl.G.2-5s
PI2	23° 47'.66 S 151° 12'.49 E	Fl.R.2-5s
PI3	23° 47'.43 S 151° 12'.40 E	Fl.G.2-5s
PI4	23° 47'.51 S 151° 12'.32 E	Fl.R.2-5s
PI5	23° 47'.02 S 151° 11'.95 E	Fl.G.2-5s
PI6	23° 47'.37 S 151° 12'.05 E	Fl.R.2-5s
PI7	23° 46'.60 S 151° 11'.45 E	Fl.G.2-5s
PI8	23° 47'.11 S 151° 11'.79 E	Fl.R.2-5s
PI9	23° 46'.50 S 151° 11'.38 E	Fl.G.2-5s
PI10	23° 46'.84 S 151° 11'.41 E	Fl.R.2-5s
PI11	23° 46'.39 S 151° 11'.32 E	Fl.G.2-5s
PI12	23° 46'.68 S 151° 11'.38 E	Fl.R.2-5s
PI13	23° 46'.26 S 151° 11'.37 E	Fl.G.2-5s
PI14	23° 46'.56 S 151° 11'.29 E	Fl.R.2-5s
PI15	23° 46'.09 S 151° 11'.42 E	Fl.G.2-5s
PI16	23° 46'.39 S 151° 11'.16 E	Fl.R.2-5s
PI17	23° 46'.16 S 151° 11'.23 E	Fl.Y.2-5s
PI18	23° 46'.13 S 151° 10'.95 E	Fl.R.2-5s
PI19	23° 46'.11 S 151° 11'.25 E	Fl.Y.2-5s
PI20	23° 46'.01 S 151° 10'.90 E	Fl.R.2-5s
PI22	23° 45'.75 S 151° 10'.78 E	Fl.R.2-5s
PI23	23° 45'.83 S 151° 10'.93 E	Fl.G.2-5s
PI24	23° 45'.58 S 151° 10'.74 E	Fl.R.2-5s
PI25	23° 45'.70 S 151° 10'.89 E	Fl.G.2-5s
PI26	23° 45'.47 S 151° 10'.66 E	Fl.R.2-5s
PI27	23° 45'.57 S 151° 10'.85 E	Fl.G.2-5s
PI28	23° 45'.34 S 151° 10'.66 E	Fl.Y.2-5s
PI29	23° 45'.52 S 151° 10'.88 E	Fl.G.2-5s
PI50	23° 46'.67 S 151° 11'.64 E	Fl.Y.2-5s

The following light buoys have been removed:

	<i>Positions</i>
PI21	23° 45'.51 S 151° 10'.88 E
PI51	23° 46'.25 S 151° 11'.21 E
PI52	23° 46'.10 S 151° 11'.26 E
PI53	23° 45'.33 S 151° 10'.66 E
PI55	23° 45'.09 S 151° 10'.29 E

The replacement of the light buoys by light beacons is due to be completed 1Q 2014. A preliminary notice to mariners will be issued for the light beacon project in due course. As such the charts will not be updated; new chart Aus 272 is due for publication early 2014.

The AHS will update the ENC AU5244X5 to reflect the changes as they occur.

Chart temporarily affected - Aus 244 - Aus 245**1057(T)/2013 AUSTRALIA - QUEENSLAND - Mooloolaba - Shoaling**

Former Notice - 1019(T)/2013 is cancelled

Maritime Safety Queensland Notice 791(T)/2013, 809(T)/2013 (AA699723, AA700878)

A least depth of 2.4m exists within the main channel to Mooloolah River.

A least depth of 2.3m exists midway between light beacons No1 (26° 40'.81 S 153° 07'.94 E) and No3 (26° 40'.86 S 153° 08'.01 E).

A least depth of 1.5m exists at the western side of the channel between light beacons No5 (26° 40'.92 S 153° 08'.09 E) and No8 (26° 41'.01 S 153° 08'.12 E).

Mariners are advised to navigate with caution in the area.

Chart temporarily affected - Aus 235

1058(T)/2013 AUSTRALIA - QUEENSLAND - Moreton Bay - Brisbane River - Depth information

Former Notice - 1020(T)/2013 is cancelled

Brisbane Port Corporation (AA701921), Maritime Safety Queensland Notice 1305(T)/2012 (AA643540)

Available depths and under keel clearances (UKC) at 16 October 2013:

<i>Berth</i>	<i>Metres</i>	<i>Remarks</i>
* Fisherman Islands No12	13.8	
Fisherman Islands No11	13.8	
Fisherman Islands No10	13.3	
Fisherman Islands No9	13.9	
Fisherman Islands No8	14.0	
Fisherman Islands No7	14.0	
* Fisherman Islands No6	14.2	
* Fisherman Islands No5	14.0	
* Fisherman Islands No4	14.0	
* Fisherman Islands No3	14.0	
* Fisherman Islands No2	14.0	
Fisherman Islands No1	13.9	
Fisherman Islands Grain and Woodchip	13.1	
Caltex Fisherman Islands	14.5	
Fisherman Islands Coal	13.8	
* Fisherman Islands General Purpose	11.0	
* BP Luggage Point	13.8	
* Caltex Products	10.1	
* Cement Australia Co Wharf	9.2	
* BP Products	10.6	
* Shell	11.1	
Pacific Terminals	10.7	
* Incitec North	9.7	
* Incitec South	10.3	
Pinkenba 1	10.4	
Pinkenba 2	10.4	
Riverside Marina	-	
Sugar Terminal	9.8	
* Cairncross Fitting Out Wharf	7.2	
Cairncross Breasting Wharf	5.0	
Brisbane Naval Wharf	4.3	
* Maritime No1	9.0	
Hamilton No4	10.0	
* Hamilton No1	8.7	
* Brisbane Cruise Ship Terminal	8.7	
	<i>Metres</i>	<i>UKC/Remarks</i>
<i>Moreton Bay:</i>		
North West Channel	15.0	2.3 (280m width)
North West Bypass Channel	9.2	1.6
Spitfire Channel	15.0	1.5 (600m width) Shoaling least depth, 14.6m, exists in position 27° 02'.39 S 153° 15'.66 E.
East Knoll Bypass Channel	6.0	1.4
East Channel	15.0	1.5 (300m width from western side)
Main Channel (M8 - M9)	10.0	1.8
Entrance Channel (E5 - EBCN)	14.7	1.5
<i>Brisbane River:</i>		
Outer Bar Cutting	14.0	1.46
* Inner Bar Cutting	13.7	1.46
* Fisherman Islands Swing Basin	13.9	1.3
River	9.1	0.6 / 0.9 (draft/tide)
Cement Australia Swing Basin	9.1	0.6 / 0.9 (draft/tide)
Pinkenba Swing Basin	9.1	0.6 / 0.9 (draft/tide)
* Hamilton Swing Basin	9.0	0.6 / 0.9 (draft/tide)
* Indicates new or revised entry.		

Chart temporarily affected - Aus 235 - Aus 236 - Aus 237 - Aus 238 - Aus 814 - Aus 815

1059(T)/2013 AUSTRALIA - QUEENSLAND - Pumicestone Channel - Light beacon unlit
Maritime Safety Queensland Notice 812(T)/2013 (AA702174)

The starboard light beacon, *Fl.G.2-5s* (27° 02'.69 S 153° 07'.74 E), is unlit.

A starboard lateral light buoy, *Fl.G.2-5s*, exists in position 27° 02'.68 S 153° 07'.74 E.

Chart temporarily affected - Aus 235 - Aus 236

1060(T)/2013 AUSTRALIA - QUEENSLAND - Shoalwater Bay - Live firing

Date - Until 21 November 2013

Maritime Safety Queensland Notice 743(T)/2013 (AA697235)

Live firing activities will be conducted in the Shoalwater Bay training area during the period 20 October to 20 November 2013.

A marine danger area extends to all internal waters bounded by the following positions:

22° 10'.02 S 150° 30'.06 E
22° 19'.92 S 150° 45'.05 E
22° 27'.02 S 150° 34'.98 E
22° 25'.00 S 150° 25'.00 E
22° 12'.47 S 150° 25'.00 E
22° 10'.02 S 150° 30'.06 E.

All waters, creeks, beaches and other areas within the declared marine danger area are not available for access.

Mariners are advised to keep clear of this area throughout the above times.

Chart temporarily affected - Aus 260 - Aus 261 - Aus 367 - Aus 820 - Aus 822 - AX 00260T - AX 00260S - AX 00367S - AX 00820S - AX 00822S

1061(T)/2013 AUSTRALIA - QUEENSLAND - Townsville - Stuart Creek - Wreck

Maritime Safety Queensland Notice 816(T)/2013 (AA701888)

A wreck marked by a special light buoy, *Fl.Y.2-5s*, exists in position 19° 16'.82 S 146° 49'.83 E.

Mariners are advised to navigate with caution in the area.

Chart temporarily affected - Aus 257

1062(T)/2013 PAPUA NEW GUINEA - Unei Island - Light unlit

National Maritime Safety Authority PNG Notice 49(T)/2013 (AA701693)

The light, *Fl(4)16s 6m 9M* (3° 22'.69 S 143° 24'.58 E), is unlit.

Chart temporarily affected - Aus 389 - Aus 651 - Aus 4622 (INT 622)

1063(P)/2013 AUSTRALIA - NORTHERN TERRITORY - Darwin - Blaydin Point - Light beacons

Date - On or about 30 March 2014

Darwin Port Corporation Notice 177(T)/2013 (AA699032, AA700174)

Light beacons, marked by temporary lights and special light buoys, Q.Y, will be established as follows:

<i>Position</i>	<i>Characteristic</i>	<i>Remarks</i>
12° 30'.300 S 130° 54'.846 E	<i>Fl.G.3s</i>	M21
12° 30'.245 S 130° 54'.583 E	<i>Fl.R.3s</i>	M22
12° 30'.229 S 130° 54'.933 E	<i>Fl.G.3s</i>	M23
12° 30'.067 S 130° 54'.880 E	<i>Fl.R.3s</i>	M24
12° 30'.260 S 130° 55'.477 E	<i>Fl.G.3s</i>	M25
12° 30'.107 S 130° 55'.285 E	<i>Fl.R.3s</i>	M26
12° 30'.148 S 130° 55'.689 E	<i>Fl.R.3s</i>	M28
12° 30'.474 S 130° 55'.608 E	<i>Fl.G.3s</i>	M29
12° 30'.398 S 130° 55'.868 E	<i>Fl.R.3s</i>	M30
12° 30'.730 S 130° 56'.015 E	<i>Fl.R.3s</i>	M32
12° 30'.944 S 130° 55'.830 E	<i>Fl.R.3s</i>	M34

Chart which will be affected - Aus 26 - Aus 28 - AX 00026T

1064(T)/2013 AUSTRALIA - WESTERN AUSTRALIA - Barrow Island - Drill rig northwestwards

Date - Until 9 December 2013

Chevron Australia Pty Ltd (AA701490), Australian Maritime Safety Authority Auscoast Warning 244/2013 (AA701786)

Drill rig *Atwood Osprey* is conducting drilling operations in position 20° 24'.49 S 114° 50'.96 E.

Chart temporarily affected - Aus 328 - Aus 4723 (INT 723) - AX 04723U

1065(T)/2013 AUSTRALIA - WESTERN AUSTRALIA - Barrow Island - Drill rig northwestwards moved

Former Notice - 921(T)/2013 is cancelled

Chevron Australia Pty Ltd (AA701490)

Cancel this notice on receipt.

Chart formerly affected - Aus 328 - Aus 4723 (INT 723) - Aus 4725 (INT 725) - AX 04723U

1066(T)/2013 AUSTRALIA - WESTERN AUSTRALIA - Dampier - Depth information

Former Notice - 1029(T)/2013 is cancelled

Dampier Port Authority Notices 32/2013, 33/2013, 35/2013 (AA699565, AA699566, AA701917)

Available depths as at 14 October 2013:

	<i>Metres</i>	<i>Remarks</i>
East Intercourse Island	19.1	
East Intercourse Island Layby berth	19.4	
East Intercourse Island Departure Channel	15.5	
Rio Tinto Deep Water Channel	15.0	
Parker Point berth 2	18.7	
Parker Point berth 3	18.8	
Parker Point berth 4	19.5	
Parker Point berth 5	19.1	
Parker Point Departure Channel	15.0	
Parker Point Approach Channel	8.0	
Fuel Wharf	11.4	
Service Wharf	6.7	
Mermaid Marine Supply Base Outer Channel	5.4	
Mermaid Marine Supply Base Inner Channel	3.0	
Berthing pocket	7.2	
* Burrup Materials Facility	7.0	
Dampier Cargo Wharf	9.0	Western side
	6.5	Eastern side
Bulk Liquids Berth	12.4	
Facilities Channel	11.0	
* Indicates new or revised entry.		

Chart temporarily affected - Aus 58 - Aus 59 - Aus 60

1067(T)/2013 AUSTRALIA - WESTERN AUSTRALIA - Glomar Shoal - Scientific instruments

Date - Until 30 June 2014

University of Western Australia (AA701907, AA701908)

Subsurface scientific instruments, 20m below the surface, exist in the following positions:

18° 45'.0 S 117° 01'.8 E

19° 31'.2 S 117° 03'.0 E

19° 04'.8 S 116° 36'.0 E

19° 03'.0 S 117° 03'.6 E

19° 33'.0 S 116° 36'.0 E.

Chart temporarily affected - Aus 327 - Aus 741

1068(T)/2013 AUSTRALIA - WESTERN AUSTRALIA - Port Hedland - Depth information*Former Notice - 875(T)/2013 is cancelled*

Port Hedland Port Authority Notice 13/2013 (AA701792)

Available depths as at 11 October 2013:

<i>Berth</i>	<i>Metres</i>
PHPA berth 1	13.2
PHPA berth 2	13.2
* PHPA berth 3	13.5
* PHPA berth 4 (Utah Point)	14.7
* BHP Billiton Nelson Point berth A	19.2
* BHP Billiton Nelson Point berth B	19.0
BHP Billiton Nelson Point berth C	19.1
* BHP Billiton Nelson Point berth D	19.0
BHP Billiton Finucane Island berth A	19.2
* BHP Billiton Finucane Island berth B	19.3
* BHP Billiton Finucane Island berth C	18.5
* BHP Billiton Finucane Island berth D	19.3
* Anderson Point berth 1	19.9
* Anderson Point berth 2	19.7
* Anderson Point berth 3	19.8
* Anderson Point berth 4	19.7
* Indicates new or revised entry.	

Chart temporarily affected - Aus 52 - Aus 54**1069(T)/2013 AUSTRALIA - WESTERN AUSTRALIA - Rankin Bank - Drilling operations completed***Former Notice - 988(T)/2013 is cancelled*

Woodside Energy Ltd (AA700438)

Cancel this notice on receipt.

Chart formerly affected - Aus 327 - Aus 4723 (INT 723) - AX 04723U**1070(T)/2013 INDIAN OCEAN - Mid Indian Ocean Basin - Light buoy removed***Former Notice - 1035(T)/2013 is cancelled*

Australian Bureau of Meteorology (AA699821)

Cancel this notice on receipt.

Chart formerly affected - Aus 4708 (INT 708) - Aus 4714 (INT 714) - Aus 4723 (INT 723) - AX 04708U - AX 04714U - AX 04723U**1071(T)/2013 AUSTRALIA - VICTORIA - Port Phillip - Queenscliff - Harbour works***Date - Until 29 November 2013*

Victorian Notice (AA701212)

Harbour works associated with the upgrade of the berth (38° 15'.88 S 144° 40'.30 E) are in progress.

Barges and a support vessels are on site and will display appropriate lights and shapes.

Mariners are advised to navigate with caution in the area.

Chart temporarily affected - Aus 143

1072(P)/2013 AUSTRALIA - VICTORIA - Western Port - Rutherford Inlet - Beacons; mooring piles

Date - On or about 5 November 2013

Victorian Notice 132(T)/2013 (AA701188)

Beacons will be repositioned as follows:

	<i>Current Position</i>	<i>New Position</i>
No24	38° 14'.08 S 145° 18'.44 E	38° 14'.076 S 145° 18'.447 E
No13	38° 13'.99 S 145° 18'.45 E	38° 13'.993 S 145° 18'.442 E
No26	38° 13'.75 S 145° 18'.36 E	38° 13'.752 S 145° 18'.368 E

28 unlit mooring piles will be established between positions 38° 14'.08 S 145° 18'.47 E and 38° 13'.78 S 145° 18'.38 E.

Chart which will be affected - Aus 151 - Aus 152

1073(T)/2013 AUSTRALIA - TASMANIA - Bruny Island - Kinghorne Point - Light

Marine and Safety Tasmania Notice M102/2013 (AA701913)

The light (43° 09'.96 S 147° 16'.56 E) has been temporarily altered to *Fl.3s*.

Chart temporarily affected - Aus 173 - Aus 795 - Aus 796

1074(T)/2013 AUSTRALIA - TASMANIA - Cape Barren Island - Scientific instruments*Date* - Until 30 June 2015

Institute for Marine and Antarctic Studies (AA701662 - AA701664), Marine and Safety Tasmania Notice M104/2013 (AA701665)

Subsurface scientific instruments exist on the seabed in the following positions:

40° 26'.38 S 148° 28'.97 E
 40° 26'.51 S 148° 29'.51 E
 40° 26'.65 S 148° 30'.05 E
 40° 26'.78 S 148° 30'.59 E.

Subsurface scientific instruments exist >30m below the surface in the following positions:

40° 26'.91 S 148° 31'.12 E
 40° 27'.05 S 148° 31'.66 E
 40° 27'.18 S 148° 32'.20 E
 40° 27'.31 S 148° 32'.74 E
 40° 27'.44 S 148° 33'.27 E
 40° 27'.58 S 148° 33'.81 E
 40° 27'.71 S 148° 34'.35 E
 40° 27'.84 S 148° 34'.89 E
 40° 27'.97 S 148° 35'.43 E
 40° 28'.11 S 148° 35'.96 E
 40° 28'.24 S 148° 36'.50 E
 40° 28'.37 S 148° 37'.04 E
 40° 28'.50 S 148° 37'.58 E
 40° 28'.64 S 148° 38'.12 E
 40° 28'.77 S 148° 38'.65 E
 40° 28'.90 S 148° 39'.19 E
 40° 29'.03 S 148° 39'.73 E
 40° 29'.16 S 148° 40'.27 E
 40° 29'.30 S 148° 40'.81 E
 40° 29'.43 S 148° 41'.35 E
 40° 29'.56 S 148° 41'.88 E
 40° 29'.69 S 148° 42'.42 E
 40° 29'.82 S 148° 42'.96 E
 40° 29'.96 S 148° 43'.50 E
 40° 30'.09 S 148° 44'.04 E
 40° 30'.22 S 148° 44'.58 E
 40° 30'.35 S 148° 45'.12 E
 40° 30'.48 S 148° 45'.65 E
 40° 30'.61 S 148° 46'.19 E
 40° 30'.75 S 148° 46'.73 E
 40° 30'.88 S 148° 47'.27 E
 40° 31'.01 S 148° 47'.81 E
 40° 31'.14 S 148° 48'.35 E
 40° 31'.27 S 148° 48'.89 E
 40° 31'.40 S 148° 49'.40 E
 40° 31'.52 S 148° 49'.90 E.

Chart temporarily affected - Aus 487 - Aus 798 - Aus 800**1075(T)/2013 AUSTRALIA - TASMANIA - Georges Bay - Pelican Point - Dredging operations***Date* - Until 30 November 2013

Marine and Safety Tasmania Notice M105/2013 (AA702194)

SSAT *Dredge* is conducting dredging operations in the vicinity of Pelican Point (41° 17'.35 S 148° 19'.52 E).

A pipeline exists from a barge to the shore and mariners must pass the barge on the western side. All mooring anchors will be marked by buoys.

Vessels transiting the area must contact SSAT *Dredge* via VHF radio prior to transit as restrictions are in place.

Mariners are advised to navigate with caution in the area.

Chart temporarily affected - Aus 169

1076(T)/2013 AUSTRALIA - TASMANIA - Mercury Passage - Light buoy destroyed
Marine and Safety Tasmania Notice 99/2013 (AA700219)

The special light buoy, *Fl. Y. 4s* (42° 35'.34 S 147° 58'.41 E), has been destroyed.

Chart temporarily affected - Aus 170 - Aus 766 - Aus 797

HYDROGRAPHIC REPORTS

<i>Locality</i>	<i>Report</i>	<i>Ship/Authority</i>	<i>Observer</i>
PAPUA NEW GUINEA- Alotau	Infrastructure; nav aids	HMAS <i>Paluma</i> and HMAS <i>Mermaid</i>	

NAVIGATION WARNINGS

The following radio messages have been received during the period to 17 October 2013. Signal copies of these messages may be destroyed. It is recommended that the reprint of Navigational Warnings should be kept in a file or a book divided into areas. Cancellation should be made on receipt of signals and reprints.

Rigs on location other than those listed in the latest Section III summary are the subject of Radio Navigational Warnings. Rigs in transit will not be the subject of Warnings.

AUSCOAST WARNING

240 Cancelled.
 241 Cancelled.
 242 Cancelled.
 243 Cancelled.
 244 Drill rig *Atwood Osprey* in position 20° 24'.5 S 114° 51'.0 E. 2.5M clearance requested.
 245 Cancelled.
 246 Tide gauge established in position 11° 12'.64 S 129° 42'.00 E marked by dan buoy with radar reflector and white flashing light.

NAVAREA X WARNINGS

056 Cancelled.
 057 Green shipping container drifting SSE at 1.5kts in position 00° 03'.7 N 152° 25'.1 E at 150600 UTC Oct 13.

Navigational warnings in force as at 170001UTC OCT 13.**Auscoast**

2013 024 099 134 217 220 224 230 234 236 237 238 244 246

Navarea X

2013 037 042 050 057

Summary of mobile drilling rigs as at 170001UTC OCT 13.

<i>Name</i>	<i>Position</i>
Ensco 104	10° 01'.07 S 129° 27'.15 E
Noble Clyde Boudreaux	13° 49'.00 S 123° 19'.35 E
Jack Bates	13° 24'.59 S 122° 59'.02 E
Transocean Legend	13° 19'.00 S 122° 16'.45 E
Atwood Eagle	19° 42'.41 S 115° 52'.53 E
Ensco 109	12° 40'.30 S 124° 32'.30 E
Atwood Falcon	20° 04'.23 S 115° 11'.00 E
Atwood Osprey	20° 24'.50 S 114° 51'.00 E
Deepwater Frontier	19° 49'.91 S 114° 34'.12 E
Nan Hai 6	21° 31'.20 S 114° 05'.10 E

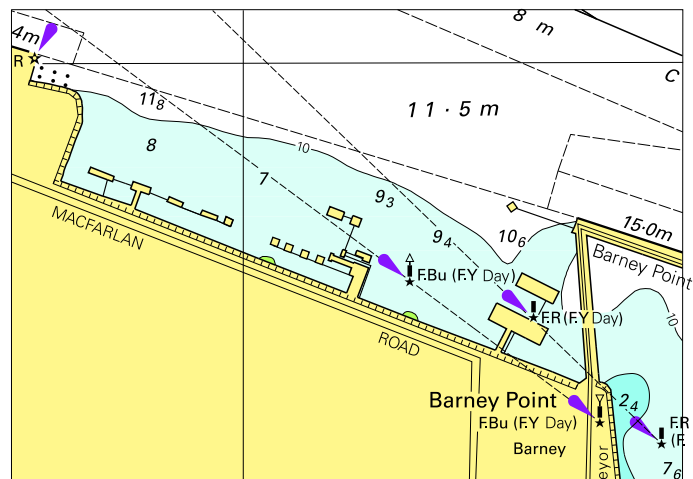
NAVAREA XIV WARNINGS

074 Cancelled.
 075 Cancelled.
 076 Cancelled.
 077 Cancelled.
 078 Cancelled.
 079 Cancelled.
 080 Cancelled.
 081 Cancelled.
 082 Cancelled.
 083 Cancelled.
 084 Cancelled.
 085 South Pacific Ocean. Tonga Trench. Underwater operations between 07 Oct and 20 Oct 2013 in areas bounded by:
 17° 30'.0 S 172° 00'.0 W
 17° 30'.0 S 174° 30'.0 W
 19° 10'.0 S 174° 30'.0 W
 19° 10'.0 S 172° 00'.0 W
 and
 19° 00'.0 S 172° 30'.0 W
 19° 00'.0 S 175° 00'.0 W
 21° 30'.0 S 175° 00'.0 W
 21° 30'.0 S 172° 30'.0 W
 and
 21° 00'.0 S 173° 00'.0 W
 21° 00'.0 S 177° 00'.0 W
 25° 00'.0 S 177° 00'.0 W
 25° 00'.0 S 173° 00'.0 W.

Navarea XIV warnings in force as at 170001UTC OCT 13.

2013 085

To accompany Australian Notice to Mariners 1042/2013

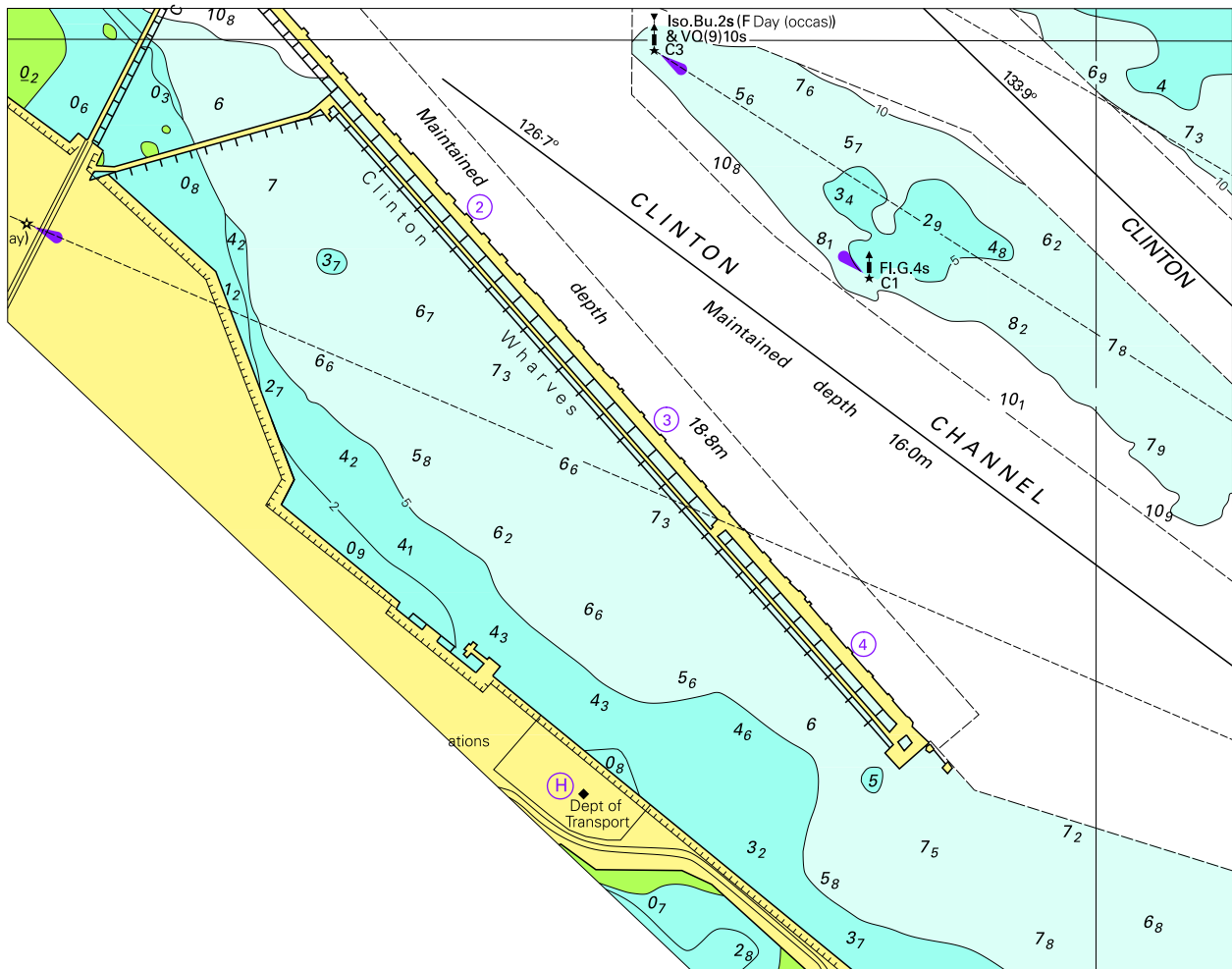


© Commonwealth of Australia 2013

Block B for chart Aus 244

(62.5 x 88.8mm)

To accompany Australian Notice to Mariners 1042/2013

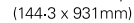


Block A for chart Aus 244

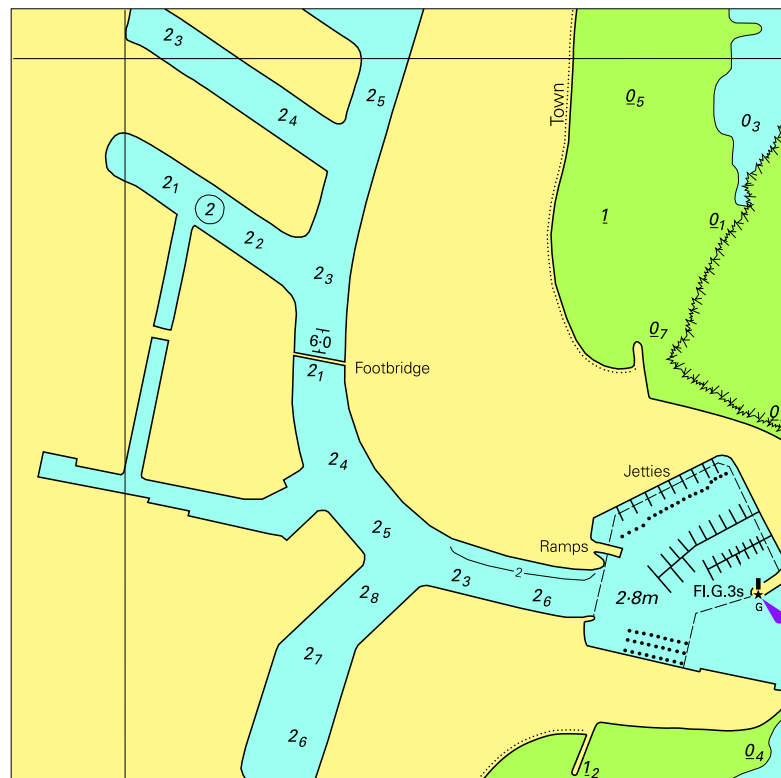
© Commonwealth of Australia 2013

(165.0 x 129.6mm)

To accompany Australian Notice to Mariners 1042/2013



To accompany Australian Notice to Mariners 1050/2013



Block for chart Aus 72

©Commonwealth of Australia 2013

(103.0 x 101.5mm)

To accompany Australian Notice to Mariners 1051/2013

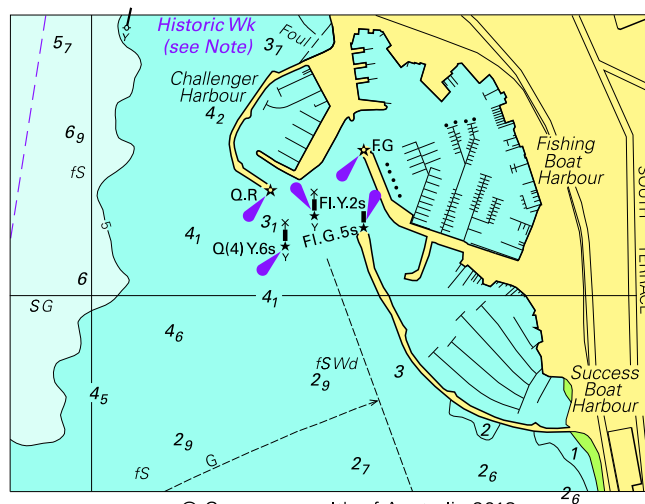


Block for Aus 113

© Commonwealth of Australia 2013

(140.0 x 156.3mm)

To accompany Australian Notice to Mariners 1051/2013



© Commonwealth of Australia 2013

Block for Aus 117

(85.4 x 63.0mm)