



23 August 2013

Edition 17

Australian Notices to Mariners are the authority for correcting Australian Charts and Publications

AUSTRALIAN NOTICES TO MARINERS

Notices 841 - 880



Published fortnightly by the Australian Hydrographic Service

Commodore B.K. BRACE RAN
Hydrographer of Australia

SECTIONS.

- I. **Australian Notices to Mariners, including blocks and notes.**
- II. **Hydrographic Reports.**
- III. **Navigational Warnings.**

SUPPLEMENTS.

- I. **Tracings**
- II. **Cumulative List of Australian Notices to Mariners.**
- III. **Cumulative List of Temporary and Preliminary Australian Notices to Mariners.**
- IV. **Temporary and Preliminary Notices in force.**
- V. **Amendments to Admiralty List of Lights and Fog Signals (Vol K), Radio Signals (NP 281(2), 282, 283(2), 285, 286(4)) and Sailing Directions (NP 9, 13, 14, 15, 33, 34, 35, 36, 39, 44, 51, 60, 61, 62, 100, 136).**

© Commonwealth of Australia 2013

This work is copyright. Apart from any use permitted under the Copyright Act 1968, no part may be reproduced by any process, adapted, communicated or commercially exploited without prior written permission from The Commonwealth represented by the Australian Hydrographic Service.

IMPORTANT NOTICE

This edition of Notices to Mariners includes all significant information affecting AHS products which the AHS has become aware of since the last edition. All reasonable efforts have been made to ensure the accuracy and completeness of the information, including third party information, on which these updates are based. The AHS regards third parties from which it receives information as reliable, however the AHS cannot verify all such information and errors may therefore exist. The AHS does not accept liability for errors in third party information.

GENERAL INSTRUCTIONS

The substance of these notices should be inserted on the charts affected.

Bearings are referred to the true compass and are reckoned clockwise from North; those relating to lights are given as seen by an observer from seaward. Positions quoted in permanent notices relate to the horizontal datum for the chart(s). When preliminary or temporary notices affect multiple charts, positions will be provided in relation to only one horizontal datum and that datum will be specified. When the multiple charts do not have a common horizontal datum, mariners will be required to adjust the position(s) for those charts not on the specified datum. The range quoted for a light is its nominal range. Depths are with reference to the chart datum of each chart. Heights are above mean high water springs or mean higher high water, as appropriate.

The capital letter (P) or (T) after the number of any notice denotes a preliminary or temporary notice respectively, which are contained separately at the end of the permanent notices. A star (*) adjacent to the number of a notice indicates that the notice is based on original information.

REPORTING OF DANGERS

Mariners are particularly requested to notify the AUSTRALIAN HYDROGRAPHIC SERVICE, Locked Bag 8801 Wollongong, NSW 2500 (Fax 02-4223 6599, e-mail Hydro.NTM@defence.gov.au or, alternatively by filling in and submitting the [Hydrographic Notes](#) forms located on the web site – www.hydro.gov.au), immediately on the discovery of new dangers or suspected dangers to navigation. For changes or defects in aids to navigation notify AusSAR (Fax 02-6230 6868 or email rccaus@amsa.gov.au).

AUTHORISED USE

Copies of Australian notices are available free of charge from the Australian Hydrographic Service (AHS) website (www.hydro.gov.au) and through the eNotices (email) service (www.hydro.gov.au/enotices/enotices.htm).

Individual Notices may be copied for the purpose of inserting Notice substance on official charts and publications. Paper copies may be printed by chart agents and distributed to customers on a cost recovery basis. Participating chart agents are listed on the AHS website as providing a 'Paper Notices to Mariners' service (www.hydro.gov.au/prodserv/distributors/distributors.htm). Copies of the notices may not be sold for profit without prior written agreement.

NUMERICAL INDEX OF NOTICES TO MARINERS

Edition No 17

Notices	Aus Chart, INT Chart, ENC Cell, AHP, BA Pubs
841	Aus 637
842	Amendment to Australian National Tide Tables 2013
843	Aus 813
844	Aus 811
845	Aus 4602, INT 602
846	Aus 826, 827
847	Aus 490, 818, 819
848	Aus 299
849	Aus 235, 236
850	Aus 236
851	Aus 236
852	Aus 902
853	Aus 57, 58, 59, 60
854	Aus 137
855	Aus 182
856	Aus 150
857	Aus 164
858	Aus 177, 792
859	Aus 170, 175
860	Aus 178
861(T)	Aus 262, 263, 264, 830, AXA 0830T
862(T)	Aus 258, 829
863(T)	Aus 252, 253, 254
864(T)	Aus 236
865(T)	Aus 235, 236, 237, 238, 814, 815
866(T)	Aus 260, 367, 822, AX 00260S, 00260T, 00367S, 00822S
867(T)	Aus 260, 261, 367, 822, AX 00260T, 00260S, 00367S, 00822S, 67261
868(T)	Aus 256, 257
869(T)	Aus 292, 293, 700, 839, 841
870(T)	Aus 4620, 4621, INT 620, 621, AX 04620U, 04621U
871(T)	Aus 507, 4604, 4620, 4621, INT 604, 620, 621, AX 04604U, 04620U, 04621U
872(T)	Aus 26, 28, AX 00026T
873(T)	Aus 26, 28, AX 00026T
874(T)	Aus 329, 4723, 4725, INT 723, 725, AX 04723U
875(T)	Aus 52, 54
876(T)	Aus 322, 4722, INT 722, AX 00322U, 04722U
877(T)	Aus 4708, 4714, 4723, INT 708, 714, 723, AX 04708U, 04714U, 04723U
878(T)	Aus 143
879(T)	Aus 155
880(T)	Aus 177

NUMERICAL INDEX OF CHARTS AFFECTED

Edition No 17

Aus Chart	Notices
Aus 26	872(T), 873(T)
Aus 28	872(T), 873(T)
Aus 52	875(T)
Aus 54	875(T)
Aus 57	853
Aus 58	853
Aus 59	853
Aus 60	853
Aus 137	854
Aus 143	878(T)
Aus 150	856
Aus 155	879(T)
Aus 164	857
Aus 170	859
Aus 175	859
Aus 177	858, 880(T)
Aus 178	860
Aus 182	855
Aus 235	849, 865(T)
Aus 236	849, 850, 851, 864(T), 865(T)
Aus 237	865(T)
Aus 238	865(T)
Aus 252	863(T)
Aus 253	863(T)
Aus 254	863(T)
Aus 256	868(T)
Aus 257	868(T)
Aus 258	862(T)
Aus 260	866(T), 867(T)
Aus 261	867(T)
Aus 262	861(T)
Aus 263	861(T)
Aus 264	861(T)
Aus 292	869(T)
Aus 293	869(T)
Aus 299	848
Aus 322	876(T)
Aus 329	874(T)
Aus 367	866(T), 867(T)
Aus 490	847
Aus 507	871(T)
Aus 637	841
Aus 700	869(T)
Aus 792	858
Aus 811	844
Aus 813	843
Aus 814	865(T)
Aus 815	865(T)
Aus 818	847
Aus 819	847
Aus 822	866(T), 867(T)
Aus 826	846
Aus 827	846
Aus 829	862(T)

Aus Chart	Notices
Aus 830	861(T)
Aus 839	869(T)
Aus 841	869(T)
Aus 902	852
Aus 4602	845
Aus 4604	871(T)
Aus 4620	870(T), 871(T)
Aus 4621	870(T), 871(T)
Aus 4708	877(T)
Aus 4714	877(T)
Aus 4722	876(T)
Aus 4723	874(T), 877(T)
Aus 4725	874(T)
AX 00026T	872(T), 873(T)
AX 00260S	866(T), 867(T)
AX 00260T	866(T), 867(T)
AX 00322U	876(T)
AX 00367S	866(T), 867(T)
AX 00822S	866(T), 867(T)
AX 04604U	871(T)
AX 04620U	870(T), 871(T)
AX 04621U	870(T), 871(T)
AX 04708U	877(T)
AX 04714U	877(T)
AX 04722U	876(T)
AX 04723U	874(T), 877(T)
AX 67261	867(T)
AXA 0830T	861(T)

INT Chart	Notices
INT 602	845
INT 604	871(T)
INT 620	870(T), 871(T)
INT 621	870(T), 871(T)
INT 708	877(T)
INT 714	877(T)
INT 722	876(T)
INT 723	874(T), 877(T)
INT 725	874(T)

841 AUSTRALIA - Product
Australian Hydrographic Service (AA690606)

New Chart

<i>Chart</i>	<i>Published</i>	<i>Title and description of amendments</i>	<i>Scale</i>	<i>Index Chart</i>	<i>Price</i>
Aus 637	23/8/2013	Papua New Guinea – North East Coast – Trobriand Islands 8° 18'·40 S – 8° 39'·20 S 150° 57'·15 E – 151° 14'·80 E Plans: Kitava Island 8° 33'·81 S – 8° 38'·82 S 151° 14'·00 E – 151° 20'·40 E Losuia 8° 32'·40 S – 8° 34'·40 S 151° 01'·38 E – 151° 04'·00E <i>New chart providing improved coverage of the Trobriand Islands.</i>	1:50 000 1:37 500 1:15 000	Aus 5000	\$35.00

For further details refer to the AHS website at www.hydro.gov.au for new edition and new chart stock arrival information.

When placing orders with a chart agent, mariners should advise whether their order pertains to the current edition or the new edition.

842 AUSTRALIA - Product - Amendment to Australian National Tide Tables 2013
Australian Hydrographic Service (AA689616)

Page xxxi
Insert Cocos Islands To Chart Datum AUS 606 NE 09 Aug 2013 0.0

Amend Cocos Islands To Chart Datum AUS 607 NE 09 Aug 2013 0.0

Page xxxvi
Amend Port Walcott To Chart Datum AUS 56 NE 09 Aug 2013 0.0

843* AUSTRALIA - NEW SOUTH WALES - Evans Head - Military exercise area
Department of Defence (AA688627, AA689114, AA689115)

Aus 813 [678/2013]
Insert accompanying block 29° 14'.0 S 153° 27'.0 E

844* AUSTRALIA - NEW SOUTH WALES - Perpendicular Point - Light buoy southeastwards
Department of Sustainability, Environment, Water, Population and Communities (AA685674)

Aus 811 [790/2013]
Move out of position light buoy 31° 40'.7 S 152° 54'.6 E
to 31° 40'.87 S 152° 54'.62 E

845* PACIFIC OCEAN - South Fiji - Light buoy
Former Notice - 283(T)/2011 is cancelled
Bureau of Meteorology (AA690493)

Aus 4602 (INT 602) [456/2013]
Delete light buoy 26° 03'.0 S 176° 00'.0 E

846* AUSTRALIA - QUEENSLAND - Cape Bowling Green - Light buoy; wreck southeastwards

Former Notice - 606(T)/2012 is cancelled

Maritime Safety Queensland (AA688578), LADS Flight (DHDB 2415464)

Aus 826 [800/2013]

Amend	legend to <i>Wk PA</i>	19° 26'.9 S	147° 45'.8 E
-------	------------------------	-------------	--------------

Delete	light buoy	19° 18'.1 S	147° 37'.0 E
--------	------------	-------------	--------------

Aus 827 [376/2013]

Amend	legend to <i>Wk PA</i>	19° 26'.9 S	147° 46'.8 E
-------	------------------------	-------------	--------------

Delete	light buoy	19° 18'.1 S	147° 37'.0 E
--------	------------	-------------	--------------

847* AUSTRALIA - QUEENSLAND - Curtis Channel - DepthsHMAS *Leeuwin* HI325_1 (DHDB 2446731)**Aus 490 [878/2012]**

Insert	depth, 17 ₄ <i>m</i> , and extend contour W to enclose	23° 49'.81 S	152° 00'.44 E
--------	---	--------------	---------------

Delete	depth, 18m	23° 49'.8 S	152° 00'.9 E
	depth, 29m	23° 48'.7 S	151° 58'.4 E
	depth, 30m, and enclosing contour	23° 54'.7 S	152° 05'.7 E

Aus 818 [1300/2011]

Insert	depth, 36 <i>m</i>	23° 55'.01 S	152° 05'.26 E
--------	--------------------	--------------	---------------

Delete	depth, 30m, and enclosing contour	23° 54'.7 S	152° 05'.7 E
	depth, 30m, and enclosing contour	23° 55'.3 S	152° 05'.0 E

Aus 819 [795/2013]

Insert	depth, 17 ₄ <i>m</i> , and extend contour N to enclose	23° 49'.81 S	152° 00'.44 E
	depth, 36 <i>m</i>	23° 55'.01 S	152° 05'.26 E

Delete	depth, 18m	23° 49'.8 S	152° 00'.9 E
	depth, 29m, and enclosing contour	23° 48'.7 S	151° 58'.4 E
	depth, 30m, and enclosing contour	23° 54'.7 S	152° 05'.7 E
	depth, 30m, and enclosing contour	23° 55'.3 S	152° 05'.0 E

848* AUSTRALIA - QUEENSLAND - Ellis Channel - Hovell Bar - Light buoys

Maritime Safety Queensland Notice 623/2013 (AA689365)

Aus 299 [32/2013]

Move	light buoy	10° 34'.01 S	142° 15'.31 E
	to	10° 33'.966 S	142° 15'.376 E
	light buoy	10° 34'.10 S	142° 15'.34 E
	to	10° 34'.062 S	142° 15'.351 E

849* AUSTRALIA - QUEENSLAND - Moreton Bay - North East Channel - Light buoy

Maritime Safety Queensland Notice 615/2013 (AA689113)

Aus 235 [797/2013]

Amend	light buoy to <i>Fl.R. 4s NE4</i>	27° 02'.3 S	153° 20'.8 E
-------	-----------------------------------	-------------	--------------

Aus 236 [797/2013]

Amend	light buoy to <i>Fl.R. 4s NE4</i>	27° 02'.3 S	153° 20'.8 E
-------	-----------------------------------	-------------	--------------

850* AUSTRALIA - QUEENSLAND - Moreton Bay - Deception Bay - Light beacon

Australian Hydrographic Service (AA229964)

Aus 236 [797/2013]

Amend	light beacon to <i>Fl.G. 2-5s No1</i>	27° 09'.0 S	153° 03'.5 E
-------	---------------------------------------	-------------	--------------

851* AUSTRALIA - QUEENSLAND - Moreton Bay - Brisbane River - The Bar to Lytton Reach - Chart limits
 Australian Hydrographic Service (AA690431)

Aus 236 [797/2013]

Insert	magenta continuous line, between	27° 18'.65 S	153° 07'.92 E
		27° 18'.33 S	153° 07'.92 E
		27° 18'.33 S	153° 12'.87 E
	magenta continuous line, between	27° 18'.65 S	153° 12'.87 E
		27° 25'.32 S	153° 07'.92 E
		27° 25'.32 S	153° 12'.87 E
Move	magenta legend, <i>Aus</i> 237 to	27° 18'.7 S	153° 08'.2 E
		27° 18'.4 S	153° 08'.2 E
Delete	magenta continuous line, between	27° 18'.7 S	153° 07'.9 E
		27° 18'.7 S	153° 12'.9 E
	magenta continuous line, between	27° 25'.3 S	153° 07'.9 E
		27° 25'.6 S	153° 07'.9 E
		27° 25'.6 S	153° 12'.9 E
		27° 25'.3 S	153° 12'.9 E

852* EAST TIMOR - Hera - Nav aids
 M.I Ali (AA684348 - AA684350)

Aus 902 (plan, Approaches to Hera) [488/2012]

Insert	red spherical mooring buoy	8° 31'.760 S	125° 41'.277 E
	red spherical mooring buoy	8° 31'.784 S	125° 41'.349 E
	red spherical mooring buoy	8° 31'.917 S	125° 41'.318 E
	red spherical mooring buoy	8° 31'.896 S	125° 41'.223 E
Substitute	starboard lateral light beacon, <i>Fl.G.4s</i> , without topmark for beacon	8° 31'.81 S	125° 41'.09 E
	port lateral beacon without topmark for beacon	8° 31'.94 S	125° 41'.08 E

853* AUSTRALIA - WESTERN AUSTRALIA - Dampier - Depths
 Department of Transport WA (DHDB 2435530)

Aus 57 [581/2013]

Insert	depth, 9 ₄ m, and extend contour N to enclose	20° 37'.34 S	116° 41'.28 E
	depth, 7 ₆ m	20° 39'.10 S	116° 40'.04 E
	depth, 8 ₉ m, and extend contour E to enclose	20° 35'.35 S	116° 41'.39 E
	depth, 7 ₁ m	20° 37'.77 S	116° 43'.38 E
Substitute	depth, 9 ₇ m, semi enclosed to W by contour, for depth, 10 ₂ m	20° 36'.6 S	116° 41'.4 E
	depth, 6 ₁ m, for depth, 6 ₅ m	20° 36'.4 S	116° 42'.8 E
Delete	depth 9 ₃ m	20° 39'.1 S	116° 39'.9 E
	depth, 7 ₈ m	20° 37'.7 S	116° 43'.3 E

Aus 58 [689/2013]

Insert	depth, 9 ₄ m, and extend contour N to enclose	20° 37'.588 S	116° 41'.267 E
	depth, 9 ₄ m, semi enclosed to W by contour	20° 37'.343 S	116° 41'.284 E
	depth, 9 ₃ m, semi enclosed to W by contour	20° 37'.073 S	116° 41'.365 E
	depth, 7 ₆ m	20° 39'.097 S	116° 40'.041 E
	depth, 6 ₉ m, and extend contour E to enclose	20° 35'.628 S	116° 41'.429 E
	depth, 8 ₉ m, enclosed by contour	20° 35'.347 S	116° 41'.388 E
	depth, 6 ₃ m	20° 36'.741 S	116° 42'.803 E
	depth, 7 ₁ m	20° 37'.765 S	116° 43'.375 E
Substitute	depth, 9 ₇ m, semi enclosed to W by contour, for depth, 10 ₂ m	20° 36'.62 S	116° 41'.43 E
	depth, 6 ₁ m, for depth, 6 ₅ m	20° 36'.41 S	116° 42'.75 E
Delete	depth, 10 ₂ m	20° 37'.62 S	116° 41'.26 E
	depth, 10m	20° 35'.62 S	116° 41'.39 E
	depth, 10 ₇ m	20° 37'.06 S	116° 41'.28 E
	depth 9 ₃ m	20° 39'.12 S	116° 39'.94 E
	depth, 6 ₆ m	20° 36'.74 S	116° 42'.88 E
	depth, 7 ₈ m	20° 37'.73 S	116° 43'.26 E

Aus 59 [689/2013]

Insert	depth, 6 ₄ m	20° 36'.618 S	116° 42'.634 E
	depth, 6 ₃ m	20° 36'.741 S	116° 42'.803 E
	depth, 7 ₁ m	20° 37'.765 S	116° 43'.375 E
	depth, 7 ₁ m	20° 37'.860 S	116° 43'.233 E
	depth, 6 ₁ m	20° 36'.394 S	116° 42'.731 E
Delete	depth, 6 ₆ m	20° 36'.73 S	116° 42'.79 E
	depth, 6 ₈ m	20° 36'.61 S	116° 42'.65 E
	depth, 7 ₈ m	20° 37'.77 S	116° 43'.39 E
	depth 7 ₅ m	20° 37'.89 S	116° 43'.24 E
	depth, 6 ₆ m	20° 36'.39 S	116° 42'.72 E

Aus 60 [1186/2012]

Insert	depth, 9 ₄ m	20° 37'.343 S	116° 41'.284 E
	depth, 9 ₅ m	20° 37'.073 S	116° 41'.365 E
	depth, 9 ₇ m, enclosed by contour	20° 36'.621 S	116° 41'.431 E
	depth, 7 ₆ m	20° 39'.097 S	116° 40'.041 E
	depth, 6 ₉ m	20° 37'.926 S	116° 41'.691 E
	depth, 6 ₄ m	20° 36'.618 S	116° 42'.634 E
	depth, 6 ₃ m	20° 36'.741 S	116° 42'.803 E
	depth, 7 ₁ m	20° 37'.765 S	116° 43'.375 E
	depth, 7 ₁ m	20° 37'.860 S	116° 43'.233 E
Substitute	depth, 9 ₄ m, for depth, 9 ₈ m	20° 37'.59 S	116° 41'.27 E

853* AUSTRALIA - WESTERN AUSTRALIA - Dampier - Depths

Delete	depth, 9 ₈ m	20° 37'.35 S	116° 41'.29 E
	depth, 9 ₈ m	20° 37'.06 S	116° 41'.37 E
	depth, 10m, and enclosing contour	20° 36'.62 S	116° 41'.45 E
	depth, 6 ₆ m	20° 36'.73 S	116° 42'.79 E
	depth, 6 ₈ m	20° 36'.61 S	116° 42'.65 E
	depth, 7 ₈ m	20° 37'.77 S	116° 43'.39 E
	depth 7 ₅ m	20° 37'.89 S	116° 43'.24 E
	depth, 9 ₃ m	20° 37'.96 S	116° 41'.73 E

854* AUSTRALIA - SOUTH AUSTRALIA - Adelaide - Light
UKHO (AA689559)

Aus 137 [807/2013]			
Amend	light to <i>Fl.G.2s 5M</i>	34° 47'.74 S	138° 28'.90 E

855* AUSTRALIA - VICTORIA - Lakes Entrance - Low water line
Gippsland Ports (DHDB 2449201)

Aus 182 (plan, Lakes Entrance) [592/2013]			
Insert	low water line, between	37° 53'.343 S	147° 57'.694 E
		37° 53'.355 S	147° 57'.706 E
		37° 53'.344 S	147° 57'.723 E
		37° 53'.336 S	147° 57'.707 E
		37° 53'.343 S	147° 57'.694 E
Delete contour, between			
		37° 53'.34 S	147° 57'.70 E
		37° 53'.35 S	147° 57'.72 E

856* AUSTRALIA - VICTORIA - Western Port - Depths
Fugro LADS Corporation (DHDB 2349668)

Aus 150 [810/2013]			
Insert	depth, 1 ₄ m, and extend contour S to enclose	38° 28'.25 S	145° 22'.91 E
	depth, 0 ₇ m	38° 30'.46 S	145° 22'.67 E
Delete	depth, 0 ₅ m	38° 30'.5 S	145° 22'.8 E
Aus 150 (plan, Eastern Entrance to Western Port) [810/2013]			
Insert	depth, 0 ₇ m	38° 30'.463 S	145° 22'.667 E
Delete	depth, 0 ₆ m	38° 30'.4 S	145° 22'.7 E

857* AUSTRALIA - TASMANIA - Devonport - Depths
HydroSurvey Australia (DHDB 2432702)

Aus 164 [1003/2010]			
Insert	depth, 8 ₉ m	41° 09'.519 S	146° 22'.375 E
Delete	depth, 9 ₁ m	41° 09'.55 S	146° 22'.37 E
Aus 164 (plan, Devonport) [1003/2010]			
Insert	depth, 8 ₉ m	41° 09'.519 S	146° 22'.375 E
Delete	depth, 9 ₆ m	41° 09'.50 S	146° 22'.38 E

858* AUSTRALIA - TASMANIA - Macquarie Harbour - Marine farms
 Marine and Safety Tasmania (AA690215, AA690216)

Aus 177 [695/2013]

Insert	dashed line and marine farm symbol, between	42° 16'.84 S	145° 17'.64 E
		42° 17'.08 S	145° 18'.31 E
		42° 16'.72 S	145° 18'.54 E
		42° 16'.35 S	145° 18'.13 E
		42° 16'.30 S	145° 17'.96 E
		42° 16'.84 S	145° 17'.64 E
Delete	dashed line, between	42° 15'.6 S	145° 18'.9 E
		42° 15'.3 S	145° 19'.5 E
		42° 15'.8 S	145° 19'.9 E
		42° 16'.1 S	145° 19'.3 E
	marine farm, centred on	42° 15'.6 S	145° 18'.9 E
		42° 14'.9 S	145° 18'.6 E

Aus 792 [1037/2012]

Insert	marine farm symbol, centred on	42° 16'.71 S	145° 18'.05 E
Delete	marine farm, centred on	42° 14'.9 S	145° 18'.6 E

859* AUSTRALIA - TASMANIA - Spring Bay - Marine farms
 Department of Primary Industries, Parks, Water and Environment (DHDB 2351255)

Aus 170 [98/2013]

Insert	marine farm symbol with legend, (see Note)	42° 31'.130 S	147° 54'.300 E
--------	--	---------------	----------------

Aus 175 [98/2013]

Insert	dashed line and marine farm symbol with legend, (see Note), between	42° 31'.113 S	147° 54'.164 E
		42° 31'.204 S	147° 54'.174 E
		42° 31'.247 S	147° 54'.378 E
		42° 31'.086 S	147° 54'.578 E
		42° 30'.977 S	147° 54'.500 E
		42° 30'.995 S	147° 54'.395 E
		42° 31'.113 S	147° 54'.164 E
	dashed line, between	42° 31'.677 S	147° 55'.253 E
		42° 31'.729 S	147° 55'.185 E
		42° 31'.937 S	147° 55'.472 E
		42° 31'.902 S	147° 55'.567 E
Delete	dashed line, between	42° 31'.68 S	147° 55'.25 E
		42° 31'.90 S	147° 55'.57 E

860* AUSTRALIA - TASMANIA - Wynyard - Infrastructure; depths
 Former Notice - 130(T)/2012 is cancelled
 Marine and Safety Tasmania (AA641771)

Aus 178 (plan, Wynyard) [390/2013]

Insert	accompanying block	40° 59'.0 S	145° 44'.0 E
--------	--------------------	-------------	--------------

861(T)/2013 AUSTRALIA - QUEENSLAND - Cairns - Depth information*Former Notice - 761(T)/2013 is cancelled*

Maritime Safety Queensland Notice 641(T)/2013 (AA690652)

Available depths as of 14 August 2013:

	<i>Metres</i>	<i>Remarks</i>
* Entrance Channel	8.3	
Crystal Swing Basin at:		
360 metre diameter	6.8	
380 metre diameter	6.4	
Swing Basin at:		
310 metre diameter	8.7	
320 metre diameter	7.8	
Marlin Marina	4.2	
<i>Berths:</i>		
No 1	8.4	
No 2	8.5	
No 3	8.4	
No 4	8.4	
No 5	8.2	
No 6	8.1	between 500 metres and 550 metres
No 6	7.7	between 550 metres and 600 metres
No 7	9.9	
No 8	10.0	
No 10	9.3	
No 12	10.5	
Smiths Creek 1	4.7	
* Indicates revised entry.		

Chart temporarily affected - Aus 262 - Aus 263 - Aus 264 - Aus 830 - AXA 0830T**862(T)/2013 AUSTRALIA - QUEENSLAND - Clump Point - Harbour works***Date - Until 30 September 2013*

Maritime Safety Queensland Notice 614(T)/2013 (AA690700)

Works associated with the removal of a jetty and construction of a new one are in progress in the vicinity of position 17° 51'.02 S 146° 06'.39 E.

Mariners are advised to navigate with caution in the area.

Chart temporarily affected - Aus 258 - Aus 829**863(T)/2013 AUSTRALIA - QUEENSLAND - Fitzalan Passage - Light buoy off station***Former Notice - 813(T)/2013 is cancelled*

Maritime Safety Queensland Notice 659(T)/2013 (AA691332)

The special light buoy, *Fl. Y. 2.5s* (20° 18'.79 S 148° 56'.05 E), is off station.**Chart temporarily affected - Aus 252 - Aus 253 - Aus 254****864(T)/2013 AUSTRALIA - QUEENSLAND - Moreton Bay - Deception Bay - Light beacon restored***Former Notice - 816(T)/2013 is cancelled*

Maritime Safety Queensland Notice 625/2013 (AA689536)

Cancel this notice on receipt.

Chart formerly affected - Aus 236

865(T)/2013 AUSTRALIA - QUEENSLAND - Moreton Bay - Brisbane River - Depth information

Former Notice - 815(T)/2013 is cancelled

Maritime Safety Queensland Notice 1305(T)/2012 (AA643540), Brisbane Port Corporation (AA691370)

Available depths and under keel clearances (UKC) at 21 August 2013:

<i>Berth</i>	<i>Metres</i>	<i>Remarks</i>
Fisherman Islands No12	14.0	
Fisherman Islands No11	13.3	
Fisherman Islands No10	13.2	
* Fisherman Islands No9	14.0	
* Fisherman Islands No8	14.0	
* Fisherman Islands No7	14.1	
Fisherman Islands No6	14.0	
Fisherman Islands No5	13.1	
Fisherman Islands No4	13.1	
Fisherman Islands No3	13.6	
* Fisherman Islands No2	14.0	
Fisherman Islands No1	14.0	
* Fisherman Islands Grain and Woodchip	12.9	
* Caltex Fisherman Islands	14.4	
Fisherman Islands Coal	14.0	
* Fisherman Islands General Purpose	10.5	
* BP Luggage Point	14.3	
* Caltex Products	10.2	
Cement Australia Co Wharf	9.7	
* BP Products	10.9	
* Shell	11.0	
* Pacific Terminals	10.7	
Incitec North	9.2	
* Incitec South	10.2	
* Pinkenba 1	10.1	
* Pinkenba 2	10.1	
Riverside Marina	-	
Sugar Terminal	9.8	
Cairncross Fitting Out Wharf	7.4	
Cairncross Breasting Wharf	5.0	
Brisbane Naval Wharf	4.3	
* Maritime No1	8.8	
Hamilton No4	10.2	
* Hamilton No1	8.7	
Brisbane Cruise Ship Terminal	8.7	
	<i>Metres</i>	<i>UKC/Remarks</i>
<i>Moreton Bay:</i>		
North West Channel	15.0	2.3 (280m width)
North West Bypass Channel	9.2	1.6
Spitfire Channel	15.0	1.5 (600m width) Shoaling least depth, 14.6m, exists in position 27° 02'.39 S 153° 15'.66 E.
East Knoll Bypass Channel	6.0	1.4
East Channel	15.0	1.5 (300m width from western side)
Main Channel (M8 - M9)	10.0	1.8
Entrance Channel (E5 - EBCN)	14.7	1.5
<i>Brisbane River:</i>		
Outer Bar Cutting	14.0	1.46
Inner Bar Cutting	14.0	1.46
Fisherman Islands Swing Basin	14.0	1.3
River	9.1	0.6 / 0.9 (draft/tide)
Cement Australia Swing Basin	9.1	0.6 / 0.9 (draft/tide)
Pinkenba Swing Basin	9.1	0.6 / 0.9 (draft/tide)
Hamilton Swing Basin	9.1	0.6 / 0.9 (draft/tide)
* Indicates new or revised entry.		

Chart temporarily affected - Aus 235 - Aus 236 - Aus 237 - Aus 238 - Aus 814 - Aus 815

866(T)/2013 AUSTRALIA - QUEENSLAND - Shoalwater Bay - Raynham Island - Live firing*Date - Until 1 October 2013*

Maritime Safety Queensland Notice 634(T)/2013 (AA690697)

Live firing activities will be conducted in the Shoalwater Bay training area during the period 15 August to 30 September 2013.

A marine danger area extends to all waters within a 3M radius of position 22° 16'.06 S 150° 32'.43 E.

All waters, creeks, beaches and other areas within the declared marine danger area are not available for access.

Mariners are advised to keep clear of this area throughout the above times.

Chart temporarily affected - Aus 260 - Aus 367 - Aus 822 - AX 00260S - AX 00260T - AX 00367S - AX 00822S

867(T)/2013 AUSTRALIA - QUEENSLAND - Shoalwater Bay - Live firing*Date - Until 21 September 2013*

Maritime Safety Queensland Notice 612(T)/2013 (AA688906)

Live firing activities will be conducted in the Shoalwater Bay training area during the period 26 August to 20 September 2013.

A marine danger area extends to all internal waters bounded by the following positions:

22° 23'.84 S 150° 18'.02 E
 22° 21'.11 S 150° 17'.03 E
 22° 22'.02 S 150° 31'.02 E
 22° 27'.02 S 150° 34'.98 E
 22° 36'.95 S 150° 36'.82 E
 22° 35'.87 S 150° 28'.80 E
 22° 24'.75 S 150° 17'.35 E
 22° 23'.84 S 150° 18'.02 E.

All waters, creeks, beaches and other areas within the declared marine danger area are not available for access.

Mariners are advised to keep clear of this area throughout the above times.

Chart temporarily affected - Aus 260 - Aus 261 - Aus 367 - Aus 822 - AX 00260T - AX 00260S - AX 00367S - AX 00822S - AX 67261

868(T)/2013 AUSTRALIA - QUEENSLAND - Townsville - Depth information*Former Notice - 820(T)/2013 is cancelled*

Maritime Safety Queensland Notice 644(T)/2013 (AA690653)

Available depths as at 14 August 2013:

	<i>Metres</i>	<i>Remarks</i>
Sea Channel	11.6	
Platypus Channel	11.3	
<i>Outer Harbour:</i>		
Arrival Channel	5.7	
Departure Channel	10.0	Less depth at SE corner 9.1 metres
<i>Inner Harbour:</i>		
Harbour	11.4	
<i>Berths:</i>		
No 1	11.9	
* No 2	12.2	
No 3	11.4	
No 4	10.4	
No 7	11.2	
Between No 7 and No 8	12.0	Seaward of 0 mark at No 7
No 8	10.8	
No 9	11.4	
Between No 9 and No 10	9.4	Seaward of 0 mark at No 10
No 10	12.0	
No 11	10.8	
Ross River Channel	2.3	Entrance to beacon No 6
Ross River	-	Upstream of beacon No 6
Ross Creek	-	
* Indicates new or revised entry.		

Chart temporarily affected - Aus 256 - Aus 257**869(T)/2013 AUSTRALIA - QUEENSLAND - Wednesday Island - Wreck salvaged***Former Notice - 822(T)/2013 is cancelled*

Maritime Safety Queensland Notice 628/2013 (AA689546)

Cancel this notice on receipt.

Chart formerly affected - Aus 292 - Aus 293 - Aus 700 - Aus 839 - Aus 841**870(T)/2013 AUSTRALIA - CORAL SEA - Willis Islets - Light buoy off station northwards***Former Notice - 823(T)/2013 is cancelled*

Australian Bureau of Meteorology (AA691539)

The light buoy, *Fl.Y.2s* (14° 48'.0 S 153° 35'.0 E), is drifting and currently in position 12° 56'.90 S 149° 33'.79 E (21 August 2013).**Chart temporarily affected - Aus 4620 (INT 620) - Aus 4621 (INT 621) - AX 04620U - AX 04621U****871(T)/2013 PAPUA NEW GUINEA - Ava Point - Light relit***Former Notice - 514(T)/2013 is cancelled*

National Maritime Safety Authority PNG Notice 22/2013 (AA689534)

Cancel this notice on receipt.

Chart formerly affected - Aus 507 - Aus 4604 (INT 604) - Aus 4620 (INT 620) - Aus 4621 (INT 621) - AX 04604U - AX 04620U - AX 04621U

872(T)/2013 AUSTRALIA - NORTHERN TERRITORY - Darwin - East Arm - Dredging operations

Darwin Port Corporation Notice 137(T)/2013 (AA690808)

The dredge *Eastern Aurora* is conducting dredging operations in the vicinity of position 12° 29'.89 S 130° 53'.26 E.

A floating pipeline, marked by special buoys and lights Q.Y, exists from the dredge to position 12° 29'.50 S 130° 53'.47 E and a submerged pipeline exists between positions 12° 29'.50 S 130° 53'.47 E and 12° 29'.39 S 130° 53'.47 E.

Mariners are advised to navigate with caution in the area.

Chart temporarily affected - Aus 26 - Aus 28 - AX 00026T

873(T)/2013 AUSTRALIA - NORTHERN TERRITORY - Darwin - East Arm - Blaydin Point - Harbour works

Former Notice - 826(T)/2013 is cancelled

Darwin Port Corporation Notice 138(T)/2013 (AA691150)

Works associated with the construction of the module offloading facility are in progress in an area bounded by the following positions:

12° 30'.51 S 130° 54'.25 E
 12° 30'.29 S 130° 55'.63 E
 12° 30'.92 S 130° 55'.97 E
 12° 31'.05 S 130° 55'.68 E
 12° 30'.57 S 130° 55'.28 E
 12° 30'.90 S 130° 54'.64 E
 12° 30'.66 S 130° 54'.26 E.

An exclusion zone exists within the area of the works.

The causeway is marked at the extremities by Q.Y lights. A silt curtain marked by Q.Y lights exists around the causeway.

Test piles marked by white spherical light buoys, Q.Y, exist in the following positions:

12° 30'.61 S 130° 54'.53 E
 12° 30'.65 S 130° 54'.63 E
 12° 30'.57 S 130° 54'.79 E
 12° 30'.70 S 130° 54'.86 E.

Scientific instruments marked by special light buoys, Q.Y, exist in the following positions:

12° 30'.00 S 130° 53'.65 E
 12° 30'.38 S 130° 53'.49 E
 12° 30'.28 S 130° 54'.09 E
 12° 30'.49 S 130° 53'.98 E
 12° 30'.19 S 130° 54'.86 E
 12° 29'.75 S 130° 55'.19 E.

Mariners are advised to navigate with caution in the area.

Chart temporarily affected - Aus 26 - Aus 28 - AX 00026T

874(T)/2013 AUSTRALIA - WESTERN AUSTRALIA - North West Cape - Drill rig southwestwards moved

Former Notice - 1056(T)/2012 is cancelled

MODU *Noble Clyde Boudreaux* (AA691532)

Cancel this notice on receipt.

Chart formerly affected - Aus 329 - Aus 4723 (INT 723) - Aus 4725 (INT 725) - AX 04723U

875(T)/2013 AUSTRALIA - WESTERN AUSTRALIA - Port Hedland - Depth information*Former Notice - 723(T)/2013 is cancelled*

Port Hedland Port Authority Notices 16/2012, 10/2013 (AA691324, AA683335)

Available depths as at 30 August 2012:

<i>Berth</i>	<i>Metres</i>
* PHPA berth 1	13.2
* PHPA berth 2	13.2
* PHPA berth 3	13.2
* PHPA berth 4 (Utah Point)	14.5
* BHP Billiton Nelson Point berth A	18.7
* BHP Billiton Nelson Point berth B	18.3
* BHP Billiton Nelson Point berth C	19.1
* BHP Billiton Nelson Point berth D	19.2
* BHP Billiton Finucane Island berth A	19.2
* BHP Billiton Finucane Island berth B	19.2
* BHP Billiton Finucane Island berth C	18.6
* BHP Billiton Finucane Island berth D	19.2
* Anderson Point berth 1	19.8
* Anderson Point berth 2	19.8
* Anderson Point berth 3	19.6
* Anderson Point berth 4	18.7
* Indicates new or revised entry.	

Chart temporarily affected - Aus 52 - Aus 54**876(T)/2013 AUSTRALIA - WESTERN AUSTRALIA - Seringapatam Reef - Seismic survey completed northwards***Former Notice - 783(T)/2013 is cancelled*

Karoo Gas Australia Ltd (AA691414)

Cancel this notice on receipt.

Chart formerly affected - Aus 322 - Aus 4722 (INT 722) - AX 00322U - AX 04722U**877(T)/2013 INDIAN OCEAN - Sunda Trench - Light buoy off station**

Australian Bureau of Meteorology (AA691539)

The buoy (11° 26'.0 S 113° 36'.0 E) is drifting and currently in position 11° 39'.39 S 95° 52'.71 E (21 August 2013).

Chart temporarily affected - Aus 4708 (INT 708) - Aus 4714 (INT 714) - Aus 4723 (INT 723) - AX 04708U - AX 04714U - AX 04723U**878(T)/2013 AUSTRALIA - VICTORIA - Port Phillip - Queenscliff - Harbour works***Date - Until 28 September 2013*

Victorian Notice 112(T)/2013 (AA690741)

Harbour works associated with the upgrade of the berth (38° 15'.88 S 144° 40'.30 E) are in progress.

Barges and a support vessel are on site and will display appropriate lights and shapes.

Mariners are advised to navigate with caution in the area.

Chart temporarily affected - Aus 143

879(T)/2013 AUSTRALIA - VICTORIA - Port Phillip - St Kilda - Harbour works

Former Notice - 532(T)/2013 is cancelled

Date - Until 20 December 2013

Victorian Notice 19(T)/2013, 46(T)/2013, 66(T)/2013, 116(T)/2013 (AA649627, AA664916, AA671811, AA691479)

Works associated with the development of a new marina are in progress.

Temporary landings will be installed in positions 37° 51'.63 S 144° 57'.95 E, 37° 51'.83 S 144° 57'.85 E and 37° 51'.64 S 144° 57'.76 E.

A temporary groyne will be installed between positions 37° 51'.64 S 144° 58'.17 E and 37° 51'.63 S 144° 57'.95 E. Special light buoys, *Fl.Y.5s*, which mark the groyne exist in positions 37° 51'.61 S 144° 57'.94 E and 37° 51'.67 S 144° 57'.97 E.

Lit piles and special light buoys, *Fl.Y.5s*, which mark the construction zone exist in the following positions:

37° 51'.641 S 144° 57'.743 E
 37° 51'.644 S 144° 57'.862 E
 37° 51'.642 S 144° 57'.941 E
 37° 51'.609 S 144° 57'.837 E
 37° 51'.612 S 144° 57'.830 E
 37° 51'.616 S 144° 57'.824 E
 37° 51'.619 S 144° 57'.818 E
 37° 51'.622 S 144° 57'.811 E
 37° 51'.626 S 144° 57'.805 E
 37° 51'.629 S 144° 57'.798 E
 37° 51'.633 S 144° 57'.791 E.

Works associated with the demolition and reconstruction of the jetty are in progress in an area marked by special conical lights buoys, *Fl.Y.5s*, bounded by the following positions:

37° 51'.80 S 144° 57'.98 E
 37° 51'.83 S 144° 57'.99 E
 37° 51'.87 S 144° 57'.99 E
 37° 51'.87 S 144° 57'.94 E
 37° 51'.87 S 144° 57'.93 E
 37° 51'.83 S 144° 57'.92 E.

All hazards to navigation will be marked by lights.

Mariners are advised to navigate with caution in the area.

Chart temporarily affected - Aus 155**880(T)/2013 AUSTRALIA - TASMANIA - Macquarie Harbour - Marine farm**

Date - Until 31 October 2013

Marine and Safety Tasmania Notice M81/2013 (AA691365)

Mariners are advised the marine farm has extended its boundaries as follows:

42° 19'.58 S 145° 21'.44 E
 42° 20'.14 S 145° 20'.71 E
 42° 20'.50 S 145° 21'.16 E
 42° 19'.93 S 145° 21'.89 E.

Chart temporarily affected - Aus 177

HYDROGRAPHIC REPORTS

<i>Locality</i>	<i>Report</i>	<i>Ship/Authority</i>	<i>Observer</i>
ENC-	Tidal information		HMAS <i>Sirius</i>

NAVIGATION WARNINGS

The following radio messages have been received during the period to 22 August 2013. Signal copies of these messages may be destroyed. It is recommended that the reprint of Navigational Warnings should be kept in a file or a book divided into areas. Cancellation should be made on receipt of signals and reprints.

Rigs on location other than those listed in the latest Section III summary are the subject of Radio Navigational Warnings. Rigs in transit will not be the subject of Warnings.

AUSCOAST WARNING

199 Cancelled.
 200 Cancelled.
 201 Cancelled.
 202 Cancelled.
 203 Cancelled.
 204 Cancelled.
 205 Varzin Passage C3 buoy in position 10° 31'.91 S 141° 56'.07 E green cone shape topmark reported missing.
 206 Cancelled.
 207 Cancelled.

NAVAREA X WARNINGS

045 Cancelled.
 046 Cancelled.
 047 Cancelled.

Navigational warnings in force as at 220001UTC AUG 13.

Auscoast

2013 024 099 134 154 174 178 185 188 190 197 205

Navarea X

2013 037 042

Summary of mobile drilling rigs as at 220001UTC AUG 13.

<i>Name</i>	<i>Position</i>
Jack Bates	13° 24'.59 S 122° 59'.02 E
Transocean Legend	13° 44'.28 S 122° 20'.13 E
Ensco 104	10° 01'.07 S 129° 27'.15 E
Ensco 109	20° 00'.38 S 115° 38'.29 E
Atwood Falcon	20° 04'.23 S 115° 11'.00 E
Atwood Osprey	20° 27'.60 S 114° 50'.52 E
Deepwater Frontier	19° 47'.55 S 114° 38'.95 E
Nan Hai 6	21° 31'.40 S 114° 07'.50 E
Atwood Eagle	21° 29'.43 S 113° 59'.82 E
Noble Clyde Boudreaux	22° 05'.20 S 113° 10'.85 E

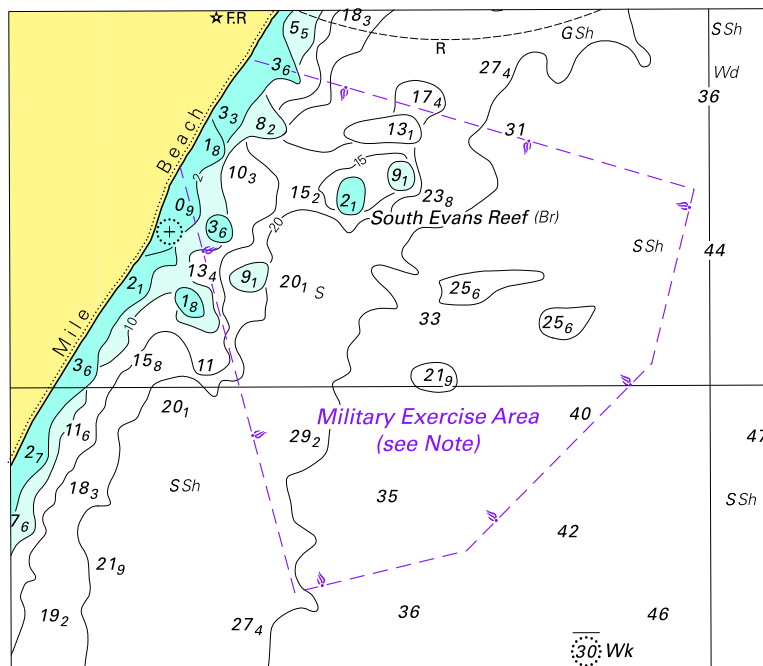
NAVAREA XIV WARNINGS

Nil.

Navarea XIV warnings in force as at 220001UTC AUG 13.

2012 076
2013 058 065

To accompany Australian Notice to Mariners 843/2013



© Commonwealth of Australia 2013

(241.4 × 148.0mm)