



26 July 2013

Edition 15

Australian Notices to Mariners are the authority for correcting Australian Charts and Publications

AUSTRALIAN NOTICES TO MARINERS

Notices 739 – 785 

Published fortnightly by the Australian Hydrographic Service

Commodore B.K. BRACE RAN
Hydrographer of Australia

SECTIONS.

- I. **Australian Notices to Mariners, including blocks and notes.**
- II. **Hydrographic Reports.**
- III. **Navigational Warnings.**

SUPPLEMENTS.

- I. **Tracings**
- II. **Cumulative List of Australian Notices to Mariners.**
- III. **Cumulative List of Temporary and Preliminary Australian Notices to Mariners.**
- IV. **Temporary and Preliminary Notices in force.**
- V. **Amendments to Admiralty List of Lights and Fog Signals (Vol K), Radio Signals (NP 281(2), 282, 283(2), 285, 286(4)) and Sailing Directions (NP 9, 13, 14, 15, 33, 34, 35, 36, 39, 44, 51, 60, 61, 62, 100, 136).**

© Commonwealth of Australia 2013

This work is copyright. Apart from any use permitted under the Copyright Act 1968, no part may be reproduced by any process, adapted, communicated or commercially exploited without prior written permission from The Commonwealth represented by the Australian Hydrographic Service.

IMPORTANT NOTICE

This edition of Notices to Mariners includes all significant information affecting AHS products which the AHS has become aware of since the last edition. All reasonable efforts have been made to ensure the accuracy and completeness of the information, including third party information, on which these updates are based. The AHS regards third parties from which it receives information as reliable, however the AHS cannot verify all such information and errors may therefore exist. The AHS does not accept liability for errors in third party information.

GENERAL INSTRUCTIONS

The substance of these notices should be inserted on the charts affected.

Bearings are referred to the true compass and are reckoned clockwise from North; those relating to lights are given as seen by an observer from seaward. Positions quoted in permanent notices relate to the horizontal datum for the chart(s). When preliminary or temporary notices affect multiple charts, positions will be provided in relation to only one horizontal datum and that datum will be specified. When the multiple charts do not have a common horizontal datum, mariners will be required to adjust the position(s) for those charts not on the specified datum. The range quoted for a light is its nominal range. Depths are with reference to the chart datum of each chart. Heights are above mean high water springs or mean higher high water, as appropriate.

The capital letter (P) or (T) after the number of any notice denotes a preliminary or temporary notice respectively, which are contained separately at the end of the permanent notices. A star (*) adjacent to the number of a notice indicates that the notice is based on original information.

REPORTING OF DANGERS

Mariners are particularly requested to notify the AUSTRALIAN HYDROGRAPHIC SERVICE, Locked Bag 8801 Wollongong, NSW 2500 (Fax 02-4223 6599, e-mail Hydro.NTM@defence.gov.au or, alternatively by filling in and submitting the [Hydrographic Notes](#) forms located on the web site – www.hydro.gov.au), immediately on the discovery of new dangers or suspected dangers to navigation. For changes or defects in aids to navigation notify AusSAR (Fax 02-6230 6868 or email rccaus@amsa.gov.au).

AUTHORISED USE

Copies of Australian notices are available free of charge from the Australian Hydrographic Service (AHS) website (www.hydro.gov.au) and through the eNotices (email) service (www.hydro.gov.au/enotices/enotices.htm).

Individual Notices may be copied for the purpose of inserting Notice substance on official charts and publications. Paper copies may be printed by chart agents and distributed to customers on a cost recovery basis. Participating chart agents are listed on the AHS website as providing a 'Paper Notices to Mariners' service (www.hydro.gov.au/prodserv/distributors/distributors.htm). Copies of the notices may not be sold for profit without prior written agreement.

NUMERICAL INDEX OF NOTICES TO MARINERS

Edition No 15

Notices	Aus Chart, INT Chart
739.....	Aus 56, 237, 606, 607, 802
740.....	Navigational warning service survey
741.....	Aus 196, 198, 199
742.....	Aus 814
743.....	Aus 235, 236, 814, 815
744.....	Aus 836
745.....	Aus 387, 646, 4622, INT 622
746.....	Aus 377, 378, 840, 4620, INT 620, AX 04620U
747.....	Aus 292, 293, 839, 841
748.....	Aus 24
749.....	Aus 20, 24, 26, 28, AX 00026T
750.....	Aus 4723, INT 723, AX 04723U
751.....	Aus 4708, INT 708, AX 04708U
752.....	Aus 742, 743
753.....	Aus 62
754.....	Aus 135, 136
755.....	Aus 144, 158
756.....	Aus 150, 151, 801
757(T).....	Aus 4601, INT 601
758(T).....	Aus 252, 253, 268
759(T).....	Aus 367, 490, 4621, 4635, INT 621, 635, AX 00367S, 04621U
760(T).....	Aus 238
761(T).....	Aus 262, 263, 264, 830, AXA 0830T
762(T).....	Aus 250
763(T).....	Aus 6
764(T).....	Aus 235, 236, 237, 238, 814, 815
765(T).....	Aus 236
766(T).....	Aus 236
767(T).....	Aus 249, 250, AX 00249S
768(T).....	Aus 262, 263, 264, 830, AX 63262, AXA 0830T
769(T).....	Aus 4621, INT 621, AX 04621U
770(T).....	Aus 612
771(T).....	Aus 392, 393, 543, 666
772(T).....	Aus 520, 4620, 4621, INT 620, 621, AX 04620U, 04621U
773(T).....	Aus 392, 393, 543, 4060, 4604, 4622, INT 60, 604, 622, AX 04604U
774(T).....	Aus 519, 520
775(T).....	Aus 292, 293, 299, 700
776(T).....	Aus 26, 28, AX 72026
777(T).....	Aus 24, 26, AX 00026T
778(T).....	Aus 310, 4721, INT 721, AX 00310U, 04721U
779(T).....	Aus 327, 4722, 4723, INT 722, 723, AX 04722U, 04723U
780(T).....	Aus 327, 328, 742, 743
781(T).....	Aus 328, 4723, INT 723, AX 04723U
782(T).....	Aus 52, 53, 54
783(T).....	Aus 322, 4722, INT 722, AX 00322U, 04722U
784(T).....	Aus 64, 743
785(T).....	Aus 171, 796

Aus Chart	Notices	Aus Chart	Notices
Aus 6.....	763(T)	Aus 796	785(T)
Aus 20.....	749	Aus 801	756
Aus 24.....	748, 749, 777(T)	Aus 802	739
Aus 26.....	749, 776(T), 777(T)	Aus 814	742, 743, 764(T)
Aus 28.....	749, 776(T)	Aus 815	743, 764(T)
Aus 52.....	782(T)	Aus 830	761(T), 768(T)
Aus 53.....	782(T)	Aus 836	744
Aus 54.....	782(T)	Aus 839	747
Aus 56.....	739	Aus 840	746
Aus 62.....	753	Aus 841	747
Aus 64.....	784(T)	Aus 4060	773(T)
Aus 135.....	754	Aus 4601	757(T)
Aus 136.....	754	Aus 4604	773(T)
Aus 144.....	755	Aus 4620	746, 772(T)
Aus 150.....	756	Aus 4621	759(T), 769(T), 772(T)
Aus 151.....	756	Aus 4622	745, 773(T)
Aus 158.....	755	Aus 4635	759(T)
Aus 171.....	785(T)	Aus 4708	751
Aus 196.....	741	Aus 4721	778(T)
Aus 198.....	741	Aus 4722	779(T), 783(T)
Aus 199.....	741	Aus 4723	750, 779(T), 781(T)
Aus 235.....	743, 764(T)	AX 63262.....	768(T)
Aus 236.....	743, 764(T), 765(T), 766(T)	AX 72026.....	776(T)
Aus 237.....	739, 764(T)	AX 00026T.....	749, 777(T)
Aus 238.....	760(T), 764(T)	AX 00249S.....	767(T)
Aus 249.....	767(T)	AX 00310U.....	778(T)
Aus 250.....	762(T), 767(T)	AX 00367S.....	759(T)
Aus 252.....	758(T)	AX 04604U.....	773(T)
Aus 253.....	758(T)	AX 04620U.....	746, 772(T)
Aus 262.....	761(T), 768(T)	AX 04621U.....	759(T), 769(T), 772(T)
Aus 263.....	761(T), 768(T)	AX 04708U.....	751
Aus 264.....	761(T), 768(T)	AX 04721U.....	778(T)
Aus 268.....	758(T)	AX 04722U.....	779(T), 783(T)
Aus 292.....	747, 775(T)	AX 04723U.....	750, 779(T), 781(T)
Aus 293.....	747, 775(T)	AXA 0830T.....	761(T), 768(T)
Aus 299.....	775(T)		
Aus 310.....	778(T)		
Aus 322.....	783(T)		
Aus 327.....	779(T), 780(T)		
Aus 328.....	780(T), 781(T)		
Aus 367.....	759(T)		
Aus 377.....	746		
Aus 378.....	746		
Aus 387.....	745		
Aus 392.....	771(T), 773(T)		
Aus 393.....	771(T), 773(T)		
Aus 490.....	759(T)		
Aus 519.....	774(T)		
Aus 520.....	772(T), 774(T)		
Aus 543.....	771(T), 773(T)		
Aus 606.....	739		
Aus 607.....	739		
Aus 612.....	770(T)		
Aus 646.....	745		
Aus 666.....	771(T)		
Aus 700.....	775(T)		
Aus 742.....	752, 780(T)		
Aus 743.....	752, 780(T), 784(T)		

739 AUSTRALIA - Product

Australian Hydrographic Service (AA685666)

New Chart

<i>Chart</i>	<i>Published</i>	<i>Title and description of amendments</i>	<i>Scale</i>	<i>Index Chart</i>	<i>Price</i>
Aus 237	26/7/2013	Australia - East Coast - Queensland - Brisbane River - The Bar to Lytton Reach 27° 18'.33 S - 27° 25'.32 S 153° 07'.92 E - 153° 12'.87 E <i>New chart with amended limits and general updating throughout.</i>	1:12 500	Aus 5001	\$35.00
Aus 802	26/7/2013	Australia - South Coast - Victoria - Cape Liptrap to Kent Group 38° 47'.20 S - 39° 33'.40 S 145° 52'.00 E - 147° 26'.00 E <i>New chart referred to WGS84 datum and LAT; with general updating throughout.</i>	1:150 000	Aus 5001	\$35.00

New Edition to be published shortly

<i>Chart</i>	<i>Title</i>	<i>Scale</i>	<i>Expected Publication Date</i>
Aus 56	Australia – North West Coast – Western Australia – Port Walcott	1:12 500	9 August 2013
Aus 606	Indian Ocean – Approaches to Cocos (Keeling) Islands	1:150 000	9 August 2013
Aus 607	Indian Ocean – Cocos (Keeling) Islands – South Keeling Islands	1:25 000	9 August 2013
	Plan: North Keeling Island	1:25 000	

Chart permanently withdrawn

<i>Chart</i>	<i>On publication of new chart</i>
Aus 237	Aus 237
Aus 802	Aus 802

For further details refer to the AHS website at www.hydro.gov.au for new edition and new chart stock arrival information.

When placing orders with a chart agent, mariners should advise whether their order pertains to the current edition or the new edition.

740 AUSTRALIA - Navigational warning service survey

Australian Maritime Safety Authority (AA666610)

The International Hydrographic Organization's World-Wide Navigational Warning Service (WWNWS) is conducting a survey concerning the quality of maritime safety information broadcast via SafetyNET and NAVTEX to identify measures to improve service. It provides an opportunity to comment on the quality of the content and reception of Navigational Warnings provided by each NAVAREA Coordinator. Please visit <http://www.needtopopulatethis.com> to complete the short survey. The World Meteorological Organization offers a similar survey regarding the World-Wide Meteorological Information and Warning Service available at: www.jcomm.info/mmms. Your participation is greatly appreciated and valued.

741* AUSTRALIA - NEW SOUTH WALES - Botany Bay - Infrastructure; light buoy; obstruction

Former Notices - 1139(T)/2011, 297(T)/2013 are cancelled
Sydney Ports Corporation (AA680891)

Aus 196 [1021/2012]

Insert	accompanying block	33° 58'.9 S	151° 12'.5 E
	north cardinal pillar light buoy, Q, with topmark	33° 57'.525 S	151° 12'.050 E
	danger line with legend <i>Obstn</i> , between	33° 57'.575 S	151° 12'.040 E
		33° 57'.530 S	151° 12'.040 E
		33° 57'.530 S	151° 12'.045 E
		33° 57'.574 S	151° 12'.045 E
Delete	contour, between	33° 57'.53 S	151° 12'.05 E
		33° 57'.56 S	151° 12'.04 E
	depth, 1 ₆ m, and semi enclosing contour	33° 57'.56 S	151° 12'.05 E

Aus 198 [929/2012]

Insert	danger circle with legend, <i>Obstn</i> , centred on	33° 57'.553 S	151° 12'.043 E
Delete	legend, Marine Works (2010)	33° 57'.9 S	151° 11'.9 E

Aus 199 [929/2012]

Insert	north cardinal pillar light buoy, Q, with topmark	33° 57'.525 S	151° 12'.050 E
	danger line with legend <i>Obstn</i> , between	33° 57'.575 S	151° 12'.040 E
		33° 57'.530 S	151° 12'.040 E
		33° 57'.530 S	151° 12'.045 E
		33° 57'.574 S	151° 12'.045 E
Delete	legend, Marine Works (2010)	33° 57'.95 S	151° 11'.90 E

742* AUSTRALIA - QUEENSLAND - Gold Coast - Artificial reef

Maritime Safety Queensland (AA684666)

Aus 814 [495/2013]

Insert	minimum depth, 18m	27° 53'.35 S	153° 27'.30 E
--------	--------------------	--------------	---------------

743* AUSTRALIA - QUEENSLAND - Moreton Bay - Artificial Reefs

Former Notice - 597(T)/2013 is cancelled
Maritime Safety Queensland (AA684666)

Aus 235 [542/2013]

Insert	minimum depth, 12 ₂ m	26° 59'.15 S	153° 23'.94 E
	minimum depth, 22m	26° 54'.48 S	153° 17'.53 E

Aus 236 [680/2013]

Insert	fish haven with minimum depth, 8 ₈ m, centred on	27° 30'.33 S	153° 18'.79 E
	minimum depth, 12 ₂ m	26° 59'.15 S	153° 23'.94 E
Delete	depth, 11 ₂ m	27° 30'.2 S	153° 18'.7 E

Aus 814 [742/2013]

Insert	minimum depth, 12 ₂ m	26° 59'.20 S	153° 23'.95 E
--------	----------------------------------	--------------	---------------

Aus 815 [1236/2012]

Insert	minimum depth, 12 ₂ m	26° 59'.20 S	153° 23'.95 E
	minimum depth, 22m	26° 54'.70 S	153° 17'.80 E

744* AUSTRALIA - QUEENSLAND - Wreck Bay - Depths

LADS Flight (DHDB 2242819)

Aus 836 [1024/2012]

Insert	depth, 0 ₂ m, enclosed by contour	12° 01'.84 S	143° 53'.22 E
	rock which covers and uncovers, enclosed by danger circle	12° 02'.01 S	143° 53'.82 E
	rock which covers and uncovers, enclosed by danger circle	12° 02'.74 S	143° 55'.78 E
	rock which covers and uncovers and extend danger line NE to enclose	12° 03'.46 S	143° 55'.95 E
	rock which covers and uncovers, enclosed by danger circle	11° 52'.43 S	143° 49'.16 E
	depth, 1 ₉ m, enclosed by contour	11° 49'.15 S	143° 50'.21 E
	rock which covers and uncovers and semi enclose by danger line to W	12° 00'.75 S	143° 56'.80 E
	rock and enclosing danger circle	12° 01'.5 S	143° 53'.6 E
	rocks and enclosing danger circle	12° 01'.8 S	143° 54'.0 E
Delete	rock and enclosing danger circle	12° 01'.9 S	143° 54'.5 E
	reef, centred on	12° 02'.8 S	143° 56'.2 E
	rock and enclosing danger circle	12° 03'.3 S	143° 56'.2 E
	depth, 23 ₈ m	12° 00'.9 S	143° 56'.5 E

745* PAPUA NEW GUINEA - Kalibobo Point - Light

National Maritime Safety Authority PNG Notice 30/2013 (AA682791)

Aus 387 [85/2013]

Amend	light range to 12M	5° 12'.8 S	145° 48'.9 E
-------	--------------------	------------	--------------

Aus 646 [NE 16/11/2012]

Amend	light range to 12M	5° 12'.75 S	145° 48'.89 E
-------	--------------------	-------------	---------------

Aus 646 (plan, Madang Harbour)

Amend	light range to 12M	5° 12'.75 S	145° 48'.89 E
-------	--------------------	-------------	---------------

Aus 4622 (INT 622) [186/2013]

Amend	light range to 12M	5° 12'.8 S	145° 48'.9 E
-------	--------------------	------------	--------------

746* AUSTRALIA - TORRES STRAIT - East Channel - Two-way route

Australian Maritime Safety Authority (AA684969)

Aus 377 [685/2013]

Insert	magenta dashed line, between	9° 11'.42 S	144° 04'.69 E
		9° 14'.80 S	144° 20'.58 E

Delete	magenta dashed line, between	9° 14'.3 S	144° 04'.5 E
		9° 14'.8 S	144° 20'.6 E

Aus 378 [631/2013]

Insert	magenta dashed line, between	9° 11'.42 S	144° 04'.69 E
		9° 14'.00 S	144° 16'.73 E
	magenta legend, <i>OUTER ROUTE</i> , centred on	9° 13'.5 S	144° 08'.5 E

Aus 840 [685/2013]

Insert	accompanying block	9° 16'.0 S	143° 52'.0 E
--------	--------------------	------------	--------------

Delete	magenta dashed line, between	9° 11'.4 S	143° 59'.3 E
		9° 11'.4 S	144° 04'.7 E
	magenta dashed line, between	9° 16'.5 S	143° 59'.3 E
		9° 16'.5 S	144° 04'.7 E

Aus 4620 (INT 620) [576/2013]

Insert	magenta dashed line, between	9° 11'.4 S	144° 04'.7 E
		9° 14'.8 S	144° 20'.6 E

Delete	magenta dashed line, between	9° 14'.3 S	144° 04'.5 E
		9° 14'.8 S	144° 20'.6 E

AX 04620U [576/2013]

Insert	magenta dashed line, between	9° 11'.4 S	144° 04'.7 E
		9° 14'.0 S	144° 16'.7 E

Delete	magenta dashed line, between	9° 14'.3 S	144° 04'.5 E
		9° 14'.8 S	144° 20'.6 E

747* AUSTRALIA - TORRES STRAIT - Prince of Wales Channel - DepthsAustralian Hydrographic Service (AA684252, AA684270), HMAS *Benalla* and HMAS *Shepparton***Aus 292 [446/2013]**

Insert	depth, 12 ₁ m	10° 28'.22 S	142° 21'.64 E
	depth, 11 ₄ m	10° 28'.43 S	142° 23'.89 E
	depth, 11 ₄ m	10° 28'.40 S	142° 24'.50 E

Delete	depth, 11 ₉ m	10° 28'.3 S	142° 24'.1 E
--------	--------------------------	-------------	--------------

Aus 293 [446/2013]

Insert	depth, 12 ₁ m	10° 28'.216 S	142° 21'.636 E
	depth, 11 ₄ m	10° 28'.426 S	142° 23'.891 E
	depth, 11 ₄ m	10° 28'.400 S	142° 24'.498 E

Delete	depth, 13 ₁ m	10° 28'.26 S	142° 21'.64 E
--------	--------------------------	--------------	---------------

Aus 839 [685/2013]

Insert	depth, 11 ₄ m	10° 28'.43 S	142° 23'.89 E
--------	--------------------------	--------------	---------------

Delete	depth, 11 ₈ m	10° 28'.6 S	142° 23'.7 E
--------	--------------------------	-------------	--------------

Aus 841 [379/2013]

Insert	depth, 11 ₄ m	10° 28'.43 S	142° 23'.89 E
--------	--------------------------	--------------	---------------

Delete	depth, 11 ₈ m	10° 28'.6 S	142° 23'.7 E
--------	--------------------------	-------------	--------------

26 July 2013

748* AUSTRALIA - NORTHERN TERRITORY - Darwin - Obstruction

Darwin Port Corporation Notice 109/2013 (AA683767)

Aus 24 [634/2013]

Insert	depth, 22 ₅ m, enclosed by danger circle with legend, <i>Obstn</i>	12° 28'.527 S	130° 49'.777 E
--------	----------------------------------------------------------------------------------	---------------	----------------

749* AUSTRALIA - NORTHERN TERRITORY - Darwin - Light buoys

Cardno (AA682910)

Aus 20 [NC 14/12/2012]

Delete	light buoy	12° 10'.6 S	130° 59'.1 E
--------	------------	-------------	--------------

Aus 24 [748/2013]

Delete	light buoy	12° 26'.04 S	130° 49'.02 E
--------	------------	--------------	---------------

Aus 26 [635/2013]

Delete	light buoy	12° 28'.1 S	130° 46'.2 E
	light buoy	12° 19'.0 S	130° 54'.9 E

Aus 28 [634/2013]

Delete	light buoy	12° 29'.78 S	130° 53'.08 E
--------	------------	--------------	---------------

AX 00026T [635/2013]

Delete	light buoy	12° 28'.1 S	130° 46'.2 E
	light buoy	12° 19'.0 S	130° 54'.9 E

750 INDONESIA - Bali - Giliselang - Obstruction

BA Notice 29/3220/2013 (AA683416)

Aus 4723 (INT 723) [692/2013]

Insert	danger circle, centred on	8° 26'.6 S	115° 43'.5 E
--------	---------------------------	------------	--------------

AX 04723U [692/2013]

Insert	danger circle, centred on	8° 26'.6 S	115° 43'.5 E
--------	---------------------------	------------	--------------

751 INDONESIA - Madura - Depth northeastwards

BA Notice 29/3221/2013 (AA683417)

Aus 4708 (INT 708) [504/2013]

Delete	depth, 31m	6° 42'.0 S	114° 28'.0 E
--------	------------	------------	--------------

AX 04708U [504/2013]

Delete	depth, 31m	6° 42'.0 S	114° 28'.0 E
--------	------------	------------	--------------

752* AUSTRALIA - WESTERN AUSTRALIA - Barrow Island - Contour

Chevron Australian Pty Ltd (AA683970 - AA683972)

Aus 742 [641/2013]

Insert	2m contour, between	20° 51'.60 S	115° 29'.31 E
		20° 51'.86 S	115° 29'.20 E
		20° 51'.75 S	115° 29'.58 E
Delete	contour, between	20° 51'.6 S	115° 29'.3 E
		20° 51'.8 S	115° 29'.6 E
	contour, between	20° 51'.9 S	115° 29'.2 E
		20° 51'.8 S	115° 29'.5 E

Aus 743 [641/2013]

Insert	2m contour, between	20° 51'.60 S	115° 29'.31 E
		20° 51'.86 S	115° 29'.20 E
		20° 51'.75 S	115° 29'.58 E
Delete	contour, between	20° 51'.6 S	115° 29'.3 E
		20° 51'.8 S	115° 29'.6 E
	contour, between	20° 51'.9 S	115° 29'.2 E
		20° 51'.8 S	115° 29'.5 E

753* AUSTRALIA - WESTERN AUSTRALIA - Barrow Island - Town Point - Recommended track eastwards; chart note

UKHO (AA684691)

Aus 62 [640/2013]

Insert	recommended track with legend 062° - 242°, between	20° 49'.71 S	115° 33'.66 E
		20° 49'.74 S	115° 33'.72 E
		20° 48'.60 S	115° 36'.01 E
	accompanying note	20° 26'.8 S	115° 26'.0 E

754* AUSTRALIA - SOUTH AUSTRALIA - Whyalla - Lights

Former Notice - 437(P)/2013 is cancelled

Department of Planning, Transport and Infrastructure SA Notices 13/2013, 20/2013 (AA665361, AA681352)

Aus 135 (plan, Whyalla) [1035/2012]

Insert	light, <i>F.Bu.15m</i>	33° 02'.126 S	137° 35'.748 E
	light, <i>F.Bu.25m</i>	33° 02'.105 S	137° 35'.603 E
	light, <i>Iso.Bu.6s 18m</i>	33° 02'.349 S	137° 35'.460 E
Amend	light to <i>Iso.Bu.2s 11m</i>	33° 02'.20 S	137° 35'.99 E
	legend to 280°	33° 02'.48 S	137° 38'.17 E
	legend to 251°	33° 01'.66 S	137° 37'.80 E
Delete	light beacon	33° 02'.14 S	137° 35'.82 E
	dashed line, between	33° 02'.11 S	137° 35'.60 E
		33° 02'.10 S	137° 35'.56 E
	light	33° 02'.49 S	137° 34'.96 E
	dashed line, between	33° 02'.49 S	137° 34'.96 E
		33° 02'.35 S	137° 35'.46 E
	light	33° 02'.10 S	137° 35'.56 E

Aus 136 [693/2013]

Insert	light, <i>F.Bu</i>	33° 02'.13 S	137° 35'.75 E
	light, <i>F.Bu</i>	33° 02'.11 S	137° 35'.60 E
Amend	light to <i>Iso.Bu.2s</i>	33° 02'.2 S	137° 36'.0 E
	legend to 280°	33° 02'.5 S	137° 38'.6 E
	legend to 251°	33° 01'.7 S	137° 37'.6 E
Delete	light	33° 02'.1 S	137° 35'.8 E
	light	33° 02'.5 S	137° 35'.0 E
	dashed line, between	33° 02'.5 S	137° 35'.0 E
		33° 02'.4 S	137° 35'.5 E

755* AUSTRALIA - VICTORIA - Port Phillip - Point Nepean - Wreck

Former Notice - 365(T)/2012 is cancelled

Victorian Notice 99/2013 (AA684358)

Aus 144 [551/2013]

Insert	depth, 3 ₁ m, enclosed by danger circle with legend, <i>Wk</i>	38° 17'.936 S	144° 39'.235 E
Delete	depth, 6 ₂ m	38° 17'.92 S	144° 39'.24 E

Aus 158 [551/2013]

Insert	depth, 3 ₁ m, enclosed by danger circle with legend, <i>Wk</i>	38° 17'.936 S	144° 39'.235 E
--------	---------------------------------------------------------------------------	---------------	----------------

756* AUSTRALIA - VICTORIA - Western Port - Depths; aeronautical beacon
 Australian Hydrographic Service (AA685425), Fugro LADS Corporation (DHDB 2349668)

Aus 150 [392/2013]

Insert	depth, 3 ₇ m, enclosed by contour	38° 29'.57 S	145° 02'.39 E
	depth, 7 ₉ m	38° 29'.09 S	145° 06'.35 E
	contour, between	38° 28'.78 S	145° 06'.25 E
		38° 29'.13 S	145° 06'.34 E
		38° 28'.88 S	145° 06'.67 E
	depth, 4 ₁ m, enclosed by contour	38° 30'.87 S	145° 16'.30 E
	depth, 11 ₅ m, enclosed by danger circle with legend, Wk	38° 31'.21 S	145° 14'.71 E
Substitute	depth, 4 ₂ m, enclosed by contour for depth, 8 ₇ m	38° 27'.8 S	145° 06'.5 E
Delete	depth, 2 ₉ m, and enclosing contour	38° 29'.6 S	145° 02'.3 E
	depth, 12 ₂ m	38° 31'.0 S	145° 16'.3 E
	contour, between	38° 29'.1 S	145° 06'.3 E
		38° 29'.0 S	145° 06'.6 E
	contour, between	38° 28'.8 S	145° 06'.3 E
		38° 28'.6 S	145° 06'.6 E
		38° 28'.9 S	145° 06'.7 E
	depth, 4 ₃ m, and enclosing danger circle with legend, Wk	38° 31'.2 S	145° 14'.6 E
	historic wreck	38° 31'.9 S	145° 09'.1 E

Aus 151 [392/2013]

Insert	depth, 3 ₇ m, enclosed by contour	38° 29'.573 S	145° 02'.393 E
	depth, 7 ₉ m	38° 29'.086 S	145° 06'.352 E
	contour, between	38° 28'.776 S	145° 06'.245 E
		38° 29'.129 S	145° 06'.342 E
		38° 28'.878 S	145° 06'.668 E
	depth, 4 ₁ m, enclosed by contour	38° 30'.869 S	145° 16'.302 E
	depth, 11 ₅ m, enclosed by danger circle with legend, Wk	38° 31'.212 S	145° 14'.711 E
Substitute	depth, 4 ₂ m, enclosed by contour for depth, 8 ₇ m	38° 27'.80 S	145° 06'.48 E
Delete	depth, 2 ₉ m, and enclosing contour	38° 29'.62 S	145° 02'.28 E
	depth, 10 ₈ m	38° 28'.76 S	145° 06'.50 E
	contour, between	38° 28'.78 S	145° 06'.25 E
		38° 28'.65 S	145° 06'.63 E
		38° 28'.88 S	145° 06'.67 E
	contour, between	38° 29'.01 S	145° 06'.30 E
		38° 28'.91 S	145° 06'.63 E
	depth, 4 ₃ m, and enclosing danger circle with legend, Wk	38° 31'.18 S	145° 14'.57 E
	historic wreck	38° 31'.90 S	145° 09'.07 E

Aus 801 [1130/2012]

Insert	depth, 3 ₇ m, enclosed by contour	38° 29'.57 S	145° 02'.39 E
	depth, 4 ₁ m, enclosed by contour	38° 30'.87 S	145° 16'.30 E
	depth, 4 ₂ m, enclosed by contour	38° 27'.80 S	145° 06'.48 E
	depth, 7 ₉ m, and extend 10m contour S to enclose	38° 29'.09 S	145° 06'.35 E
	depth, 11 ₅ m, enclosed by danger circle with legend, Wk	38° 31'.21 S	145° 14'.71 E
Delete	depth, 2 ₉ m, and enclosing contour	38° 29'.6 S	145° 02'.3 E
	depth, 4 ₃ m, and enclosing danger circle with legend, Wk	38° 31'.2 S	145° 14'.6 E
	historic wreck	38° 31'.9 S	145° 09'.1 E
	aero beacon	38° 31'.0 S	145° 13'.2 E

757(T)/2013 AUSTRALIA - TASMAN SEA - Tasman Basin - Light buoy re-established

Former Notice - 175(T)/2012 is cancelled
 Australian Bureau of Meteorology (AA685546)

Cancel this notice on receipt.

Chart formerly affected – Aus 4601 (INT 601)

758(T)/2013 AUSTRALIA - QUEENSLAND - Airlie Beach - Abel Point - Wreck dispersed

Former Notice - 667(T)/2009 is cancelled
 Maritime Safety Queensland (AA685608)

Cancel this notice on receipt.

Chart formerly affected – Aus 252 – Aus 253 – Aus 268

759(T)/2013 AUSTRALIA - QUEENSLAND - Bell Cay - Foul ground southwards

Department of Defence (AA686780)

Foul ground exists within a 3M radius of position 22° 10'.0 S 151° 20.0E.

The area contains jettisoned ordnance with negligible risk of explosion.

Mariners are advised to navigate with caution in the area.

Chart temporarily affected – Aus 367 – Aus 490 – Aus 4621 (INT 621) – Aus 4635 (INT 635) – AX 00367S – AX 04621U

760(T)/2013 AUSTRALIA - QUEENSLAND - Brisbane River - Shafston Reach - Harbour works

Date - Until 31 July 2014

Maritime Safety Queensland Notice 562(T)/2013 (AA686411)

Harbour works associated with the reconstruction of the New Farm riverwalk are in progress.

A temporary 6 knot speed limit, marked by four special light buoys Q.Y, exists between 27° 27'.83 S 153° 02'.15 E and 27° 27'.77 S 153° 02'.15 E downstream to 27° 28'.37 S 153° 02'.38 E and 27° 28'.35 S 153° 02'.44 E.

The barge *MDT1803* and tugs are on site and will monitor VHF Ch 13. The barge will display appropriate lights and shapes and the offshore anchor lines will be marked by special light buoys.

Mariners are advised to navigate with caution in the area.

Chart temporarily affected – Aus 238

761(T)/2013 AUSTRALIA - QUEENSLAND - Cairns - Depth information*Former Notice - 404(T)/2013 is cancelled*

Maritime Safety Queensland Notice 561(T)/2013 (AA685958)

Available depths as of 18 July 2013:

	<i>Metres</i>	<i>Remarks</i>
* Entrance Channel	7.8	
Crystal Swing Basin at:		
360 metre diameter	6.8	
380 metre diameter	6.4	
Swing Basin at:		
310 metre diameter	8.7	
320 metre diameter	7.8	
Marlin Marina	4.2	
Berths:		
No 1	8.4	
No 2	8.5	
No 3	8.4	
No 4	8.4	
No 5	8.2	
No 6	8.1	between 500 metres and 550 metres
No 6	7.7	between 550 metres and 600 metres
No 7	9.9	
No 8	10.0	
No 10	9.3	
No 12	10.5	
Smiths Creek 1	4.7	

* Indicates revised entry.

Chart temporarily affected – Aus 262 – Aus 263 – Aus 264 – Aus 830 – AXA 0830T**762(T)/2013 AUSTRALIA - QUEENSLAND - Hay Point - Diving operations***Former Notice - 467(T)/2013 is cancelled**Date - Until 16 August 2013*

Maritime Safety Queensland Notice 556(T)/2013 (AA686377)

Diving operations are in progress in the vicinity position 21° 15'.78S 149° 18'.78 E.

MV *Shadows* is on site and will display appropriate lights and shapes and will monitor VHF Ch 14 and Ch 16.

Mariners are advised to navigate with caution in the area.

Chart temporarily affected – Aus 250**763(T)/2013 AUSTRALIA - QUEENSLAND - Karumba - Dredging operations***Date - Until 9 September 2013*

Maritime Safety Queensland Notice 572(T)/2013 (AA686339)

The vessel *Pacific Conquest* is conducting dredging operations in Karumba Entrance Channel (17° 26'.1 S 140° 44'.2 E).

Mariners are advised to navigate with caution in the area.

Chart temporarily affected – Aus 6

764(T)/2013 AUSTRALIA - QUEENSLAND - Moreton Bay - Brisbane River - Depth information

Former Notice - 645(T)/2013 is cancelled

Brisbane Port Corporation (AA686370), Maritime Safety Queensland Notice 1305(T)/2012 (AA643540)

Available depths and under keel clearances (UKC) at 23 July 2013:

<i>Berth</i>	<i>Metres</i>	<i>Remarks</i>
* Fisherman Islands No12	14.0	
Fisherman Islands No11	13.3	
Fisherman Islands No10	13.2	
* Fisherman Islands No9	13.1	
* Fisherman Islands No8	13.8	
* Fisherman Islands No7	13.9	
* Fisherman Islands No6	14.0	
* Fisherman Islands No5	13.1	
Fisherman Islands No4	13.0	
* Fisherman Islands No3	13.6	
Fisherman Islands No2	13.0	
* Fisherman Islands No1	14.0	
Fisherman Islands Grain and Woodchip	12.1	
* Caltex Fisherman Islands	14.5	
* Fisherman Islands Coal	14.0	
* Fisherman Islands General Purpose	10.6	
* BP Luggage Point	14.3	
* Caltex Products	10.1	
Cement Australia Co Wharf	9.6	
* BP Products	10.5	
* Shell	10.8	
Pacific Terminals	10.5	
* Incitec North	9.2	
* Incitec South	10.1	
Pinkenba 1	10.4	
Pinkenba 2	10.4	
Riverside Marina	-	
Sugar Terminal	9.8	
Cairncross Fitting Out Wharf	7.4	
* Cairncross Breasting Wharf	5.1	
Brisbane Naval Wharf	4.3	
* Maritime No1	8.9	
* Hamilton No4	10.2	
* Hamilton No1	8.8	
* Brisbane Cruise Ship Terminal	8.7	
	<i>Metres</i>	<i>UKC/Remarks</i>
Moreton Bay:		
North West Channel	15.0	2.3 (280m width)
North West Bypass Channel	9.2	1.6
Spitfire Channel	15.0	1.5 (600m width) Shoaling least depth, 14.6m, exists in position 27° 02'.39 S 153° 15'.66 E.
East Knoll Bypass Channel	6.0	1.4
East Channel	15.0	1.5 (300m width from western side)
Main Channel (M8 - M9)	10.0	1.8
Entrance Channel (E5 - EBCN)	14.7	1.5
Brisbane River:		
Outer Bar Cutting	14.0	1.46
Inner Bar Cutting	13.8	1.46
* Fisherman Islands Swing Basin	14.0	1.3
River	9.1	0.6 / 0.9 (draft/tide)
Cement Australia Swing Basin	9.1	0.6 / 0.9 (draft/tide)
Pinkenba Swing Basin	9.1	0.6 / 0.9 (draft/tide)
* Hamilton Swing Basin	8.8	0.6 / 0.9 (draft/tide)
* Indicates new or revised entry.		

Chart temporarily affected – Aus 235 – Aus 236 – Aus 237 – Aus 238 – Aus 814 – Aus 815

26 July 2013

765(T)/2013 AUSTRALIA - QUEENSLAND - Moreton Bay - Russell Island - Pile driving completed*Former Notice - 646(T)/2013 is cancelled*

Maritime Safety Queensland Notice 557(T)/2013 (AA686140)

Cancel this notice on receipt.

Chart formerly affected – Aus 236**766(T)/2013 AUSTRALIA - QUEENSLAND - Moreton Bay - Deception Bay - Dredging operations***Former Notice - 342(T)/2013 is cancelled**Date - Until 28 February 2014*

Maritime Safety Queensland Notices 243(T)/2013, 563(T)/2013 (AA662217, AA686321)

The dredge *Ken Harvey* and support vessels MT *Sealion* and MT *Turtle* and two spoil barges are conducting dredging operations in the vicinity of 27° 11'.42 S 153° 05'.61 E.

Two lit orange mooring buoys exist in positions 27° 11'.03 S 153° 05'.39 E and 27° 11'.03 S 153° 05'.45 E.

No4 light beacon (27° 11'.81 S 153° 05'.62 E) has been removed and a port lateral light buoy, *Q.R*, has been established in situ.

All vessels will display appropriate lights and shapes and monitor VHF Ch 12.

The dredge will be moored in the channel and vessels transiting the channel will be required to contact the dredger on VHF Ch 12 or mobile 0408 197 705 to request side mooring wires be lowered.

Mariners are advised to navigate with caution in the area.

Chart temporarily affected – Aus 236**767(T)/2013 AUSTRALIA - QUEENSLAND - Slade Island - Scientific instruments***Date - Until 18 August 2013*

Maritime Safety Queensland Notice 575(T)/2013 (AA686397)

Scientific instruments marked by special light buoys, *Q.Y*, exist in positions 21° 05'.84 S 149° 15'.10 E and 21° 05'.51 S 149° 15'.93 E.

Chart temporarily affected – Aus 249 – Aus 250 – AX 00249S**768(T)/2013 AUSTRALIA - QUEENSLAND - Trinity Inlet to Haycock Island - Scientific instruments***Date - Until 31 July 2014*

Maritime Safety Queensland Notice 551(T)/2013 (AA686131)

Subsurface scientific instruments exist in positions:

16° 45'.30 S 145° 42'.55 E

16° 48'.28 S 145° 44'.72 E

16° 51'.24 S 145° 54'.84 E

16° 51'.75 S 145° 50'.50 E

16° 53'.51 S 145° 47'.11 E

16° 57'.71 S 145° 47'.77 E.

Chart temporarily affected – Aus 262 – Aus 263 – Aus 264 – Aus 830 – AX 63262 – AX A0830T**769(T)/2013 AUSTRALIA - CORAL SEA - Lihou Reef - Light buoy off station northeastwards**

Australian Bureau of Meteorology (AA686483)

The light buoy, *Fl.Y.2s*, (14° 48'.0 S 153° 35'.0 E), is drifting and currently in position 14° 21'.1 S 151° 50'.9 E (23 July 2013).

Chart temporarily affected – Aus 4621 (INT 621) – AX 04621U

770(T)/2013 AUSTRALIA - CORAL SEA - Saumarez Reefs - Live firing

Former Notice - 711(T)/2013 is cancelled
 Royal Australian Air Force (AA682279)

Cancel this notice on receipt.

Chart formerly affected – Aus 612

771(T)/2013 PAPUA NEW GUINEA - Cape Sueusat - Light unlit

National Maritime Safety Authority PNG Notice 34(T)/2013 (AA686044)

The light, *Fl.5s 9m 10M* (2° 37'.02 S 150° 46'.60 E), is unlit.

Chart temporarily affected – Aus 392 – Aus 393 – Aus 543 – Aus 666

772(T)/2013 PAPUA NEW GUINEA - Daia Point - Light relit

Former Notice - 165(T)/2013 is cancelled
 National Maritime Safety Authority PNG Notice 32/2013 (AA686053)

Cancel this notice on receipt.

Chart formerly affected – Aus 520 – Aus 4620 (INT 620) - Aus4621 (INT 621) – AX 04620U – AX 04621U

773(T)/2013 PAPUA NEW GUINEA - Djaul Island - Light relit

Former Notice - 473(T)/2013 is cancelled
 National Maritime Safety Authority PNG Notice 31/2013 (AA684346)

Cancel this notice on receipt.

Chart formerly affected – Aus 392 – Aus 393 – Aus 543 – Aus 4060 (INT 60) – Aus 4604 (INT 604) – Aus 4622 (INT 622) – AX 04604U

774(T)/2013 PAPUA NEW GUINEA - Veale Reef - Light relit

Former Notice - 515(T)/2013 is cancelled
 National Maritime Safety Authority PNG Notice 33/2013 (AA686053)

Cancel this notice on receipt.

Chart formerly affected – Aus 519 – Aus 520

775(T)/2013 AUSTRALIA - TORRES STRAIT - Channel Rock - Wreck; light buoy

Maritime Safety Queensland Notice 547/2013 (AA684394)

A wreck marked by an isolated danger cylindrical light buoy, *Fl(4)2s*, exists in position 10° 33'.14 S 142° 15'.13 E.

Mariners are advised to navigate with caution in the area.

Chart temporarily affected – Aus 292 – Aus 293 – Aus 299 – Aus 700

776(T)/2013 AUSTRALIA - NORTHERN TERRITORY - Darwin - East Arm - Dredging operations completed

Former Notice - 758(T)/2012 is cancelled
 Darwin Port Corporation (AA686061)

Cancel this notice on receipt.

Chart formerly affected - Aus26 - Aus28 - AX72026

777(T)/2013 AUSTRALIA - NORTHERN TERRITORY - Darwin - Sadgroves Creek - Wreck
 Darwin Port Corporation Notice 121(T)/2013 (AA686405)

A stranded wreck exists in position 12° 27'.22 S 130° 51'.24 E. A special light buoy, *Fl(2)Y.8s*, exists in position 12° 27'.19 S 130° 51'.23 E.

Mariners are advised to navigate with caution in the area.

Chart temporarily affected – Aus 24 – Aus 26 – AX 00026T

778(T)/2013 AUSTRALIA - TIMOR SEA - Evans Shoal - Drill rig southwestwards

Date - Until 21 October 2013

Australian Maritime Safety Authority Auscoast Warning 188/2013 (AA685879), MODU *ENSCO 104* (AA685690)

Drill rig ENSCO 104 is conducting drilling operations in position 10° 01'.07 S 129° 27'.16 E.

Chart temporarily affected – Aus 310 – Aus 4721 (INT 721) – AX 00310U – AX 04721U

779(T)/2013 AUSTRALIA - WESTERN AUSTRALIA - Barrow Island - Seismic survey completed northeastwards

Former Notice - 565(T)/2013 is cancelled

Karoo Gas Australia Ltd (AA683770)

Cancel this notice on receipt.

Chart formerly affected – Aus 327 – Aus 4722 (INT 722) – Aus 4723 (INT 723) – AX 04722U – AX 04723U

780(T)/2013 AUSTRALIA - WESTERN AUSTRALIA - Barrow Island - Shoaling

Former Notice - 725(P)/2013 is cancelled

Chevron Australia Pty Ltd (AA683970 - AA683972)

Cancel this notice on receipt.

Chart formerly affected – Aus 327 – Aus 328 – Aus 742 – Aus 743

781(T)/2013 AUSTRALIA - WESTERN AUSTRALIA - Montebello Islands - Drill rig northwestwards

Former Notice - 1294(T)/2012 is cancelled

Date - Until 30 June 2014

Australian Maritime Safety Authority Auscoast Warning 190/2013 (AA686193), MODU *Deepwater Frontier* (AA686194)

Drill rig *Deepwater Frontier* is conducting drilling operations in position 19° 47'.55 S 114° 38'.95 E.

Chart temporarily affected – Aus 328 – Aus 4723 (INT 723) – AX 04723U

782(T)/2013 AUSTRALIA - WESTERN AUSTRALIA - Port Hedland - Dredging operations

Date - Until 20 August 2013

Port Hedland Port Authority Notice 12/2013 (AA686285)

The dredge *Juan Sebastian Elcano* and support vessels *Relianca* and *Go Puriya* are conducting dredging operations in the inner harbour, swing basin, berth pockets and the main shipping channel.

Information about the operations and associated vessels can be obtained on VHF Ch 12 and Ch 16.

Mariners must keep clear of the dredge and advised to navigate with caution in the area.

Chart temporarily affected – Aus 52 – Aus 53 – Aus 54

783(T)/2013 AUSTRALIA - WESTERN AUSTRALIA - Seringapatam Reef - Seismic survey northwards*Date* - Until 31 August 2013

Karoo Gas Australia Ltd (AA683770)

MV Geo Caspian with a 6000m towed array and support vessels MV Cassandra VI and MV Guard Merlin are conducting a survey in the area bounded by the following positions:

13° 15'.16 S 121° 43'.87 E

13° 25'.06 S 121° 34'.65 E

13° 32'.38 S 121° 43'.66 E

13° 08'.38 S 122° 04'.21 E

13° 02'.91 S 121° 57'.48 E.

Chart temporarily affected – Aus 322 – Aus 4722 (INT 722) – AX 04722U**784(T)/2013 AUSTRALIA - WESTERN AUSTRALIA - Thevenard Island - Scientific instrument southwards***Date* - Until 1 November 2013

Department of Transport WA Notice 104/2013 (AA686394)

A special pillar light buoy, Q(5)Y.20s, exists in position 21° 31'.81 S 115° 01'.74 E.

Chart temporarily affected – Aus 64 – Aus 743**785(T)/2013 AUSTRALIA - TASMANIA - River Derwent - Tranmere Point - Scientific instrument recovered***Former Notice* - 526(T)/2012 is cancelled

Marine and Safety Tasmania (AA684395)

Cancel this notice on receipt.

Chart formerly affected – Aus 171 – Aus 796

HYDROGRAPHIC REPORTS

<i>Locality</i>	<i>Report</i>	<i>Ship/Authority</i>	<i>Observer</i>
WESTERN AUSTRALIA- Sulphur Bay	Light unlit		V Rubulis

NAVIGATION WARNINGS

The following radio messages have been received during the period to 25 July 2013. Signal copies of these messages may be destroyed. It is recommended that the reprint of Navigational Warnings should be kept in a file or a book divided into areas. Cancellation should be made on receipt of signals and reprints.

Rigs on location other than those listed in the latest Section III summary are the subject of Radio Navigational Warnings. Rigs in transit will not be the subject of Warnings.

AUSCOAST WARNING

179 Cancelled.
 180 Cancelled.
 181 Cancelled.
 182 Cancelled.
 183 Cancelled.
 184 Cancelled.
 185 Special purpose vessel *Ramform Explorer* conducting seismic survey in an area bounded by 13° 00'.0 S to 13° 53'.0 S and 123° 21'.0 E to 123° 47'.0 E. 6M clearance requested.
 186 Cancelled.
 187 Cancelled.
 188 Drill rig *Ensco 104* in position 10° 01'.07 S 129° 27'.15 E. 2.5M clearance requested.
 189 Cancelled.
 190 Drill rig *Deepwater Frontier* in position 19° 47'.55 S 114° 38'.95 E. 2.5M clearance requested.
 191 Cancelled.
 192 Mallacoota DGPS station ALRS Vol(2) in position 37° 34'.09 S 149° 44'.16 E temporarily discontinued.

NAVAREA X WARNINGS

040 Cancelled.
 041 Cancelled.
 042 Some Furuno GPS receivers may experience positional error on or after 11 August 2013. See Furuno website http://www.furuno.co.jp/en/news/notice/20130214_001.html for details, including remedial action.

Navigational warnings in force as at 250001UTC JUL 13.**Auscoast**

2012 318

2013 024 028 075 091 096 098 099 132 134 135 154 158 168 172 174 176 178 185 188 190 192

Navarea X

2013 037 042

Summary of mobile drilling rigs as at 250001UTC JUL 13.

<i>Name</i>	<i>Position</i>
Jack Bates	13° 24'.59 S 122° 59'.02 E
Transocean Legend	13° 44'.28 S 122° 20'.13 E
Ensco 104	10° 01'.07 S 129° 27'.15 E
Ensco 109	20° 00'.38 S 115° 38'.29 E
Atwood Falcon	20° 04'.23 S 115° 11'.00 E
Atwood Osprey	20° 27'.60 S 114° 50'.52 E
Ocean America	20° 45'.41 S 114° 44'.00 E
Deepwater Frontier	19° 47'.55 S 114° 38'.95 E
Nan Hai 6	21° 31'.40 S 114° 07'.50 E
Noble Clyde Boudreaux	22° 05'.20 S 113° 10'.85 E
Atwood Eagle	20° 01'.80 S 115° 12'.05 E

NAVAREA XIV WARNINGS

Nil.

Navarea XIV warnings in force as at 250001UTC JUL 13.

2012 076

2013 Nil

To accompany Australian Notice to Mariners 753/2013

RECOMMENDED TRACKS

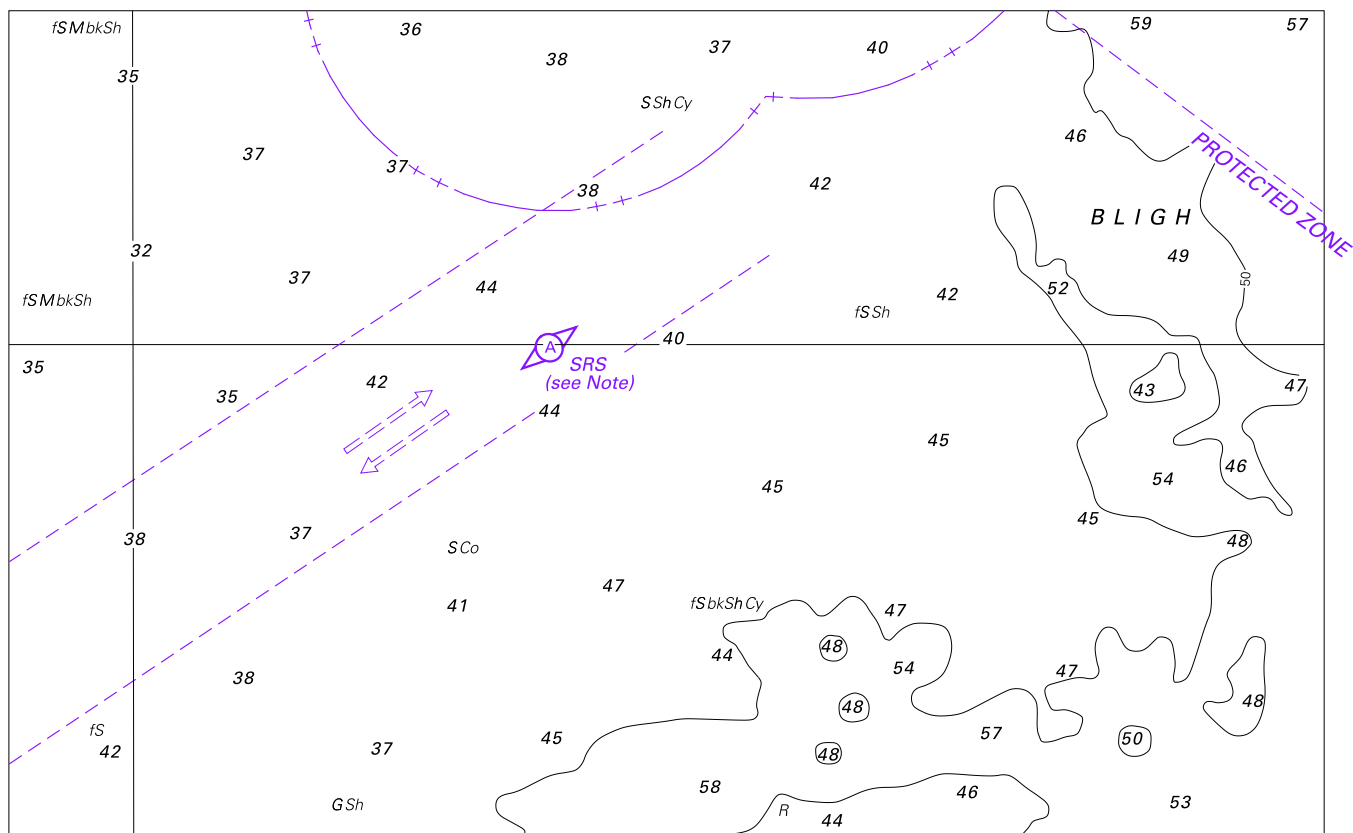
This track has been surveyed in accordance with the IMO/IHO standards for recommended tracks. The attention of vessels meeting on recommended tracks is drawn to the International Regulations for Preventing Collisions at Sea (1972), particularly Rules 18 and 28 regarding vessels constrained by their draught.

Note for chart Aus 62

Block for chart Aus 196

(86.8 x 150.08mm)

To accompany Australian Notice to Mariners 746/2013



Block for chart Aus 840

© Commonwealth of Australia 2013

(173.9 x 109.3mm)