



12 July 2013

Edition 14

Australian Notices to Mariners are the authority for correcting Australian Charts and Publications

AUSTRALIAN NOTICES TO MARINERS

Notices 666 – 738 

List of Temporary and Preliminary Notices in force

Published fortnightly by the Australian Hydrographic Service

Commodore B.K. BRACE RAN
Hydrographer of Australia

SECTIONS.

- I. [Australian Notices to Mariners, including blocks and notes.](#)
- II. [Hydrographic Reports.](#)
- III. [Navigational Warnings.](#)

SUPPLEMENTS.

- I. [Tracings](#)
- II. [Cumulative List of Australian Notices to Mariners.](#)
- III. [Cumulative List of Temporary and Preliminary Australian Notices to Mariners.](#)
- IV. [Temporary and Preliminary Notices in force.](#)
- V. [Amendments to Admiralty List of Lights and Fog Signals \(Vol K\), Radio Signals \(NP 281\(2\), 282, 283\(2\), 285, 286\(4\)\) and Sailing Directions \(NP 9, 13, 14, 15, 33, 34, 35, 36, 39, 44, 51, 60, 61, 62, 100, 136\).](#)

© Commonwealth of Australia 2013

This work is copyright. Apart from any use permitted under the Copyright Act 1968, no part may be reproduced by any process, adapted, communicated or commercially exploited without prior written permission from The Commonwealth represented by the Australian Hydrographic Service.

IMPORTANT NOTICE

This edition of Notices to Mariners includes all significant information affecting AHS products which the AHS has become aware of since the last edition. All reasonable efforts have been made to ensure the accuracy and completeness of the information, including third party information, on which these updates are based. The AHS regards third parties from which it receives information as reliable, however the AHS cannot verify all such information and errors may therefore exist. The AHS does not accept liability for errors in third party information.

GENERAL INSTRUCTIONS

The substance of these notices should be inserted on the charts affected.

Bearings are referred to the true compass and are reckoned clockwise from North; those relating to lights are given as seen by an observer from seaward. Positions quoted in permanent notices relate to the horizontal datum for the chart(s). When preliminary or temporary notices affect multiple charts, positions will be provided in relation to only one horizontal datum and that datum will be specified. When the multiple charts do not have a common horizontal datum, mariners will be required to adjust the position(s) for those charts not on the specified datum. The range quoted for a light is its nominal range. Depths are with reference to the chart datum of each chart. Heights are above mean high water springs or mean higher high water, as appropriate.

The capital letter (P) or (T) after the number of any notice denotes a preliminary or temporary notice respectively, which are contained separately at the end of the permanent notices. A star (*) adjacent to the number of a notice indicates that the notice is based on original information.

REPORTING OF DANGERS

Mariners are particularly requested to notify the AUSTRALIAN HYDROGRAPHIC SERVICE, Locked Bag 8801 Wollongong, NSW 2500 (Fax 02-4223 6599, e-mail Hydro.NTM@defence.gov.au or, alternatively by filling in and submitting the [Hydrographic Notes](#) forms located on the web site – www.hydro.gov.au), immediately on the discovery of new dangers or suspected dangers to navigation. For changes or defects in aids to navigation notify AusSAR (Fax 02-6230 6868 or email rccaus@amsa.gov.au).

AUTHORISED USE

Copies of Australian notices are available free of charge from the Australian Hydrographic Service (AHS) website (www.hydro.gov.au) and through the eNotices (email) service (www.hydro.gov.au/enotices/enotices.htm).

Individual Notices may be copied for the purpose of inserting Notice substance on official charts and publications. Paper copies may be printed by chart agents and distributed to customers on a cost recovery basis. Participating chart agents are listed on the AHS website as providing a 'Paper Notices to Mariners' service (www.hydro.gov.au/prodserv/distributors/distributors.htm). Copies of the notices may not be sold for profit without prior written agreement.

NUMERICAL INDEX OF NOTICES TO MARINERS

Edition No 14

Notices	Aus Chart, INT Chart, AHP
666.....	Aus 237, 802
667.....	AusRNC service to be permanently withdrawn
668.....	Amendment to Seafarers Handbook for Australian Waters AHP20
669.....	Amendment to Annual Australian Notice to Mariners
670.....	Aus 808, AX 00808S
671.....	Aus 195
672.....	Aus 197, 204, 489, 808, 809, AX 00808S, 00809S
673.....	Aus 200, 201, AX 63200, 00201T
674.....	Aus 203
675.....	Aus 489, 809, AX 00809S
676.....	Aus 207, 809, AX 00809S
677.....	Aus 219
678.....	Aus 813
679.....	Aus 236
680.....	Aus 236
681.....	Aus 262, 830, AX 63262, AXA 0830T
682.....	Aus 264
683.....	Aus 830, AXA 0830T
684.....	Aus 270
685.....	Aus 376, 377, 837, 839, 840
686.....	Aus 684
687.....	Aus 4
688.....	Aus 6
689.....	Aus 58, 59
690.....	Aus 327, 741
691.....	Aus 327, 328, 4723, 4725, INT 723, 725, AX 04723U
692.....	Aus 328, 4723, INT 723, AX 04723U
693.....	Aus 136
694.....	Aus 485, 780
695.....	Aus 177
696.....	Aus 143, 155
697(T).....	Aus 197, 200, 808, 809, AX 63200, 00808S, 00809S
698(T).....	Aus 200, 202, AX 00202T
699(T).....	Aus 197, 200, 201, AX 63200, 00201T
700(T).....	Aus 207, 208
701(T).....	Aus 236
702(T).....	Aus 242
703(T).....	Aus 246
704(T).....	Aus 246, 819
705(T).....	Aus 819
706(T).....	Aus 245
707(T).....	Aus 247, 265, 819
708(T).....	Aus 247, 265, 819
709(T).....	Aus 247, 265
710(T).....	Aus 247, 819, 820, AX 00820S
711(T).....	Aus 612
712(T).....	Aus 250
713(T).....	Aus 830
714(T).....	Aus 262, 263, 264, 830, AX 63262, AXA 0830T
715(T).....	Aus 262, AX 63262
716(T).....	Aus 262, 263, 830
717(T).....	Aus 263, 264
718(T).....	Aus 830, AX 6027S
719(T).....	Aus 270
720(T).....	Aus 4
721(T).....	Aus 29, 309, 316, 722, AX 00309T, 00309U, 00722T
722(T).....	Aus 322, 4722, INT 722, AX 00322U, 04722U
723(T).....	Aus 52, 54
724(T).....	Aus 54
725(P).....	Aus 327, 328, 742, 743
726(T).....	Aus 328, 4723, INT 723, AX 04723U
727(T).....	Aus 64, 328, 743
728(T).....	Aus 4709, 4727, INT 709, 727
729(T).....	Aus 793, 794
730(T).....	Aus 157
731(P).....	Aus 143, 154, 155

Notices	Aus Chart, INT Chart, AHP
732(T)	Aus 154
733(T)	Aus 154
734(T)	Aus 154
735(T)	Aus 150, 801
736(T)	Aus 181
737(T)	Aus 357, 487
738(T)	TEMPORARY AND PRELIMINARY NOTICES

Aus Chart	Notices	Aus Chart	Notices
Aus 4.....	687, 720(T)	Aus 801	735(T)
Aus 6.....	688	Aus 802	666
Aus 29.....	721(T)	Aus 808	670, 672, 697(T)
Aus 52.....	723(T)	Aus 809	672, 675, 676, 697(T)
Aus 54.....	723(T), 724(T)	Aus 813	678
Aus 58.....	689	Aus 819	704(T), 705(T), 707(T), 708(T), 710(T)
Aus 59.....	689	Aus 820	710(T)
Aus 64.....	727(T)	Aus 830	681, 683, 713(T), 714(T), 716(T), 718(T)
Aus 136.....	693	Aus 837	685
Aus 143.....	696, 731(P)	Aus 839	685
Aus 150.....	735(T)	Aus 840	685
Aus 154.....	731(P), 732(T), 733(T), 734(T)	Aus 4709	728(T)
Aus 155.....	696, 731(P)	Aus 4722	722(T)
Aus 157.....	730(T)	Aus 4723	691, 692, 726(T)
Aus 177.....	695	Aus 4725	691
Aus 181.....	736(T)	Aus 4727	728(T)
Aus 195.....	671	AX 6027S	718(T)
Aus 197.....	672, 697(T), 699(T)	AX 63200	673, 697(T), 699(T)
Aus 200.....	673, 697(T), 698(T), 699(T)	AX 63262	681, 714(T), 715(T)
Aus 201.....	673, 699(T)	AX 00201T	673, 699(T)
Aus 202.....	698(T)	AX 00202T	698(T)
Aus 203.....	674	AX 00309T	721(T)
Aus 204.....	672	AX 00309U	721(T)
Aus 207.....	676, 700(T)	AX 00322U	722(T)
Aus 208.....	700(T)	AX 00722T	721(T)
Aus 219.....	677	AX 00808S	670, 672, 697(T)
Aus 236.....	679, 680, 701(T)	AX 00809S	672, 675, 676, 697(T)
Aus 237.....	666	AX 00820S	710(T)
Aus 242.....	702(T)	AX 04722U	722(T)
Aus 245.....	706(T)	AX 04723U	691, 692, 726(T)
Aus 246.....	703(T), 704(T)	AXA 0830T	681, 683, 714(T)
Aus 247.....	707(T), 708(T), 709(T), 710(T)		
Aus 250.....	712(T)		
Aus 262.....	681, 714(T), 715(T), 716(T)		
Aus 263.....	714(T), 716(T), 717(T)		
Aus 264.....	682, 714(T), 717(T)		
Aus 265.....	707(T), 708(T), 709(T)		
Aus 270.....	684, 719(T)		
Aus 309.....	721(T)		
Aus 316.....	721(T)		
Aus 322.....	722(T)		
Aus 327.....	690, 691, 725(P)		
Aus 328.....	691, 692, 725(P), 726(T), 727(T)		
Aus 357.....	737(T)		
Aus 376.....	685		
Aus 377.....	685		
Aus 485.....	694		
Aus 487.....	737(T)		
Aus 489.....	672, 675		
Aus 612.....	711(T)		
Aus 684.....	686		
Aus 722.....	721(T)		
Aus 741.....	690		
Aus 742.....	725(P)		
Aus 743.....	725(P), 727(T)		
Aus 780.....	694		
Aus 793.....	729(T)		
Aus 794.....	729(T)		

666 AUSTRALIA - Product

Australian Hydrographic Service (AA683372)

New Chart to be published shortly

<i>Chart</i>	<i>Title</i>	<i>Scale</i>	<i>Expected Publication Date</i>
Aus 237	Australia - East Coast - Queensland - Brisbane River - The Bar to Lytton Reach	1:12 500	26 July 2013
Aus 802	Australia - South Coast - Victoria - Cape Liptrap to Clifty Island	1:150 000	26 July 2013

For further details refer to the AHS website at www.hydro.gov.au for new edition and new chart stock arrival information.

When placing orders with a chart agent, mariners should advise whether their order pertains to the current edition or the new edition.

667 AUSTRALIA - Product - AusRNC service to be permanently withdrawn

Australian Hydrographic Service (AA682524)

The Australian Hydrographic Service intends to fully withdraw its AusRNC service (formerly known as the Seafarer RNC service) from 30 June 2014. From July 2013 to June 2014, users may continue to purchase AusRNC monthly / periodic update subscriptions however the last update CD to be dispatched under the AusRNC service will be June 2014. Price reductions for monthly update subscriptions will apply to accommodate for the reduction in remaining length of the service up to July 2014.

The AusRNC service has been replaced by the AusENC service. Mariners seeking to shift from RNC to ENC should refer to the AHS website for additional information and details of chart distribution agents.

Selected RNC charts will remain available via the UK Admiralty Raster Chart Service (ARCS).

668 AUSTRALIA - Product - Amendment to Seafarers Handbook for Australian Waters AHP20

Australian Maritime Safety Authority (AA680670 - AA680673)

Page 17 (2.4.5) - Australian Maritime Safety Authority - Search and Rescue - paragraph 8 line 6

Delete Australian Ship Reporting System (AUSREP)

Insert the Modernised Australian Ship Tracking and Reporting System (MASTREP)

Page 81 (6.7.2) - Marine Pollution Reporting - paragraph 2 line 1

Delete AUSREP

Insert MASTREP

Page 123 (8.14.3) - Conduct of a Pilot - paragraph 2 line 14

Delete AUSREP

Insert MASTREP

Page 155 (9.12) - Safety in Antarctic Waters - paragraph 3

Substitute accompanying block

Chapter 10 - Ship Reporting System

Delete pages 161 to 173

Substitute accompanying pages 161 to 170

669 AUSTRALIA - Product - Amendment to Annual Australian Notice to Mariners

Australian Maritime Safety Authority (AA680670 - AA680673)

Page 2

Amend No 4B to 4A*Amend* No 4C to 4B*Delete* No 4A *The Australian Ship Reporting System (AUSREP)*

Page 3

Amend No 4B to 4A*Amend* No 4C to 4B*Delete* No 4A *The Australian Ship Reporting System (AUSREP)*

Page 5, No 1

Amend d) to read MASTREP and REEFREP ship reporting systems and requirements,

Page 16, No 4

Amend Para 2 to read When a vessel or an aircraft is in distress in the Australian Search and Rescue Region (SRR) (see page 24, the SRR covers the same area as the MASTREP area depicted), assistance may be given by vessels in the vicinity and/or the following authorities:

Page 17, No 4

Amend Para 4 (d) to read Operation of the Modernised Australian Ship Tracking and Reporting System (MASTREP).

Page 23-28, No 4A

Substitute accompanying pages for pages 23 to 28

Page 29, No 4C

Amend 4C to 4B

Page 30, No 5

Amend Para 2 to read In the Australian SAR Area, AMVER does not supersede the MASTREP system. AMVER communications stations and message formats are described in ALRS Vol 1 (*Ship Reporting Systems*) and these should be used when outside the MASTREP area.

Page 32, No 6

Amend Para 5 to readMMSI number 005030001. See the MASTREP Map page 24 for station locations.

Page 100, No 22

Amend Para 38 to read When a vessel departs a port within REEFVTS AREA and intends to report MASTREP when it exits the REEFVTS Area, the vessel should ensure Position Reports are transmitted by AIS in accordance with the *International Convention for the Safety of Life at Sea (SOLAS)*, Chapter 5, Regulation 19.2.4.*Amend* Para 39 to read When a vessel departs the REEFVTS Area and is reporting to MASTREP, the Master must report and malfunction of the vessel's AIS equipment to RCC Australia in accordance with Section 186 of the *Navigation Act 2012*. Further information about reporting to MASTREP is provided in the MASTREP and Australian Mandatory Reporting Guide. A copy of this Guide can be downloaded from the AMSA website at www.amsa.gov.au**670* AUSTRALIA - NEW SOUTH WALES - Bass Point - Wreck**

NSW Department of Environment and Heritage (AA680921)

Aus 808 (plan, Bass Point) [540/2013]*Substitute* # with magenta legend, *Historic Wk* (see Note) for danger circle and legend, Obstn

34° 35'.60 S 150° 53'.04 E

AX 00808S (plan, Bass Point) [540/2013]*Substitute* # with magenta legend, *Historic Wk* (see Note) for danger circle and legend, Obstn

34° 35'.60 S 150° 53'.04 E

12 July 2013

671* AUSTRALIA - NEW SOUTH WALES - Bellambi Point - Wreck
NSW Department of Environment and Heritage (AA680921)

Aus 195 [1171/2012]

Insert	magenta legend, <i>Historic Wk (see Note)</i>	34° 22'.27 S	150° 56'.10 E
--------	---	--------------	---------------

672* AUSTRALIA - NEW SOUTH WALES - Ben Buckler to Hawkesbury River - Wrecks
NSW Department of Environment and Heritage (AA680921)

Aus 197 [540/2013]

Amend	legend to magenta legend <i>Historic Wk (see Note)</i>	33° 54'.6 S	151° 19'.8 E
	legend to magenta legend <i>Historic Wk (see Note)</i>	33° 54'.8 S	151° 20'.2 E
	legend to magenta legend <i>Historic Wk (see Note)</i>	33° 32'.7 S	151° 25'.5 E

Aus 204 [90/2012]

Insert	legend, <i>Historic Wk (see Note)</i>	33° 30'.12 S	151° 10'.85 E
--------	---------------------------------------	--------------	---------------

Amend	legend to magenta legend <i>Historic Wk (see Note)</i>	33° 32'.7 S	151° 25'.5 E
-------	--	-------------	--------------

Aus 489 [540/2013]

Amend	legend to magenta legend <i>Historic Wk</i>	33° 54'.7 S	151° 20'.2 E
	legend to magenta legend <i>Historic Wk</i>	33° 32'.8 S	151° 26'.8 E

Aus 808 [670/2013]

Amend	legend to magenta legend <i>Historic Wk (see Note)</i>	33° 54'.6 S	151° 19'.8 E
	legend to magenta legend <i>Historic Wk (see Note)</i>	33° 54'.8 S	151° 20'.2 E

Aus 809 [627/2013]

Amend	legend to magenta legend <i>Historic Wk (see Note)</i>	33° 32'.7 S	151° 25'.8 E
-------	--	-------------	--------------

AX 00808S [670/2013]

Amend	legend to magenta legend <i>Historic Wk (see Note)</i>	33° 54'.8 S	151° 20'.2 E
	legend to magenta legend <i>Historic Wk (see Note)</i>	33° 54'.6 S	151° 19'.8 E

AX 00809S [540/2013]

Amend	legend to magenta legend <i>Historic Wk (see Note)</i>	33° 32'.7 S	151° 25'.8 E
-------	--	-------------	--------------

673* AUSTRALIA - NEW SOUTH WALES - Port Jackson - The Sound - Wrecks

NSW Department of Environment and Heritage, S Willan (AA680921)

Aus 200 [626/2013]

Insert	magenta legend, <i>Historic Wk (see Note)</i>	33° 49'.290 S	151° 17'.310 E
	depth, 5 ₁ m, enclosed by danger circle with legend, <i>Wk</i>	33° 49'.467 S	151° 15'.712 E
Delete	historic wreck	33° 48'.94 S	151° 16'.11 E

Aus 201 [540/2013]

Insert	magenta legend, <i>Historic Wk (see Note)</i>	33° 49'.290 S	151° 17'.310 E
	depth, 5 ₁ m, enclosed by danger circle with legend, <i>Wk</i>	33° 49'.467 S	151° 15'.712 E
Delete	historic wreck	33° 48'.94 S	151° 16'.11 E
	depth, 5 ₉ m	33° 49'.47 S	151° 15'.71 E

AX 63200 [540/2013]

Insert	magenta legend, <i>Historic Wk (see Note)</i>	33° 49'.290 S	151° 17'.310 E
	depth, 5 ₁ m, enclosed by danger circle with legend, <i>Wk</i>	33° 49'.467 S	151° 15'.712 E
Delete	historic wreck	33° 48'.94 S	151° 16'.11 E

AX 00201T [540/2013]

Insert	magenta legend, <i>Historic Wk (see Note)</i>	33° 49'.290 S	151° 17'.310 E
	depth, 5 ₁ m, enclosed by danger circle with legend, <i>Wk</i>	33° 49'.467 S	151° 15'.712 E
Delete	historic wreck	33° 48'.94 S	151° 16'.11 E
	depth, 5 ₉ m	33° 49'.47 S	151° 15'.71 E

674* AUSTRALIA - NEW SOUTH WALES - Port Jackson - Homebush Bay - Wrecks

NSW Department of Environment and Heritage (AA680894)

Aus 203 [NC 3/5/2013]

Insert	magenta legend, <i>Historic Wks (see Note)</i>	33° 50'.04 S	151° 04'.68 E
	magenta legend, <i>Historic Wks (see Note)</i>	33° 50'.20 S	151° 04'.81 E
	accompanying note	33° 51'.10 S	151° 06'.10 E

675* AUSTRALIA - NEW SOUTH WALES - Lake Macquarie - Moon Island - Light

Former Notice - 594(T)/2013 is cancelled
NSW Roads and Maritime Services (AA680612)

Aus 489 [672/2013]

Amend	light to <i>Iso.WR.2s 5M</i>	33° 05'.2 S	151° 40'.4 E
-------	------------------------------	-------------	--------------

Aus 809 [672/2013]

Amend	light to <i>Iso.WR.2s 12m 5M</i> with sectors White 078° - 010° (292°) Red 010° - 078° (68°)	33° 05'.2 S	151° 40'.4 E
-------	--	-------------	--------------

Aus 809 (plan, Lake Macquarie Entrance)

Amend	light to <i>Iso.WR.2s 12m 5M</i> with red sector 010° - 078° (68°)	33° 05'.21 S	151° 40'.40 E
-------	--	--------------	---------------

AX 00809S [672/2013]

Amend	light to <i>Iso.WR.2s 12m 5M</i> with sectors White 078° - 010° (292°) Red 010° - 078° (68°)	33° 05'.2 S	151° 40'.4 E
-------	--	-------------	--------------

AX 00809S (plan, Lake Macquarie Entrance)

Amend	light to <i>Iso.WR.2s 12m 5M</i> with red sector 010° - 078° (68°)	33° 05'.21 S	151° 40'.40 E
-------	--	--------------	---------------

676* AUSTRALIA - NEW SOUTH WALES - Newcastle - Precautionary area; wrecks

Former Notice - 644(P)/2013 is cancelled
NSW Department of Environment and Heritage (AA680921), Newcastle Port Corporation (AA679287)

Aus 207 [627/2013]

Insert	accompanying block	32° 58'.0 S	151° 52'.0 E
	magenta dashed line, between	32° 57'.110 S	151° 48'.830 E
		32° 57'.864 S	151° 48'.830 E

Aus 207 (inset, Hexham Reach)

Insert	magenta legend, <i>Historic Wk (see Note)</i>	32° 49'.49 S	151° 41'.22 E
	magenta legend, <i>Historic Wk (see Note)</i>	32° 49'.82 S	151° 41'.51 E

Aus 809 [675/2013]

Insert	accompanying block	33° 00'.0 S	151° 57'.0 E
--------	--------------------	-------------	--------------

AX 00809S [675/2013]

Insert	accompanying block	33° 00'.0 S	151° 57'.0 E
--------	--------------------	-------------	--------------

677* AUSTRALIA - NEW SOUTH WALES - Cape Hawke Harbour - Wreck

NSW Department of Environment and Heritage (AA680921)

Aus 219 (plan, Cape Hawke Harbour) [541/2013]

Insert	magenta legend, <i>Historic Wk (see Note)</i>	32° 10'.35 S	152° 30'.57 E
--------	---	--------------	---------------

678* AUSTRALIA - NEW SOUTH WALES - Byron Bay - Wreck

NSW Department of Environment and Heritage (AA680921)

Aus 813 [283/2013]

Insert	magenta legend, <i>Historic Wk (see Note)</i>	28° 38'.3 S	153° 36'.2 E
--------	---	-------------	--------------

679* AUSTRALIA - QUEENSLAND - Moreton Bay - Light beacons

Maritime Safety Queensland Notice 530/2013 (AA682902)

Aus 236 [542/2013]

Amend	light beacon to <i>Iso.Bu.4s 20m & Mo(A)6s 4M</i> , with triangular topmark apex down	27° 15'.0 S	153° 15'.1 E
	light beacon to <i>Q.Bu.10m & LFl.10s 4M</i> , with triangular topmark apex up	27° 15'.8 S	153° 14'.5 E

680* AUSTRALIA - QUEENSLAND - Moreton Bay - Scarborough - Light beacon

Maritime Safety Queensland Notice 498/2013 (AA680332)

Aus 236 [679/2013]

Move	light beacon	27° 11'.6 S	153° 06'.2 E
	to	27° 11'.59 S	153° 06'.14 E

681* AUSTRALIA - QUEENSLAND - Cairns - Unexploded ordnance

Australian Hydrographic Service (AA682292)

Aus 262 [247/2013]

Insert	magenta dashed circle, radius 463m, with legend <i>UXO (see Note)</i> ,centred on	16° 47'.262 S	145° 55'.435 E
	accompanying note	16° 53'.8 S	145° 43'.2 E

Aus 830 [285/2013]

Insert	magenta legend <i>UXO (see Note)</i> ,centred on	16° 41'.93 S	145° 51'.65 E
	magenta legend <i>UXO (see Note)</i> ,centred on	16° 55'.33 S	145° 58'.85 E
	accompanying note	16° 58'.0 S	145° 35'.0 E
	magenta legend <i>UXO (see Note)</i> ,centred on	16° 47'.50 S	145° 55'.50 E

AX 63262 [247/2013]

Insert	accompanying note	16° 53'.8 S	145° 43'.2 E
	magenta dashed circle, radius 463m, with legend <i>UXO (see Note)</i> ,centred on	16° 47'.262 S	145° 55'.435 E

AXA 0830T [247/2013]

Insert	magenta legend <i>UXO (see Note)</i> ,centred on	16° 41'.93 S	145° 51'.65 E
	magenta legend <i>UXO (see Note)</i> ,centred on	16° 55'.33 S	145° 58'.85 E
	accompanying note	16° 28'.0 S	146° 25'.0 E
	magenta legend <i>UXO (see Note)</i> ,centred on	16° 47'.50 S	145° 55'.50 E

682* AUSTRALIA - QUEENSLAND - Cairns - Trinity Inlet - Smiths Creek - Wreck*Former Notice - 1154(T)/2011 is cancelled*

Maritime Safety Queensland (AA681210)

Aus 264 [135/2012]

Insert	stranded wreck	16° 57'.51 S	145° 46'.26 E
--------	----------------	--------------	---------------

683* AUSTRALIA - QUEENSLAND - Yorkeys Knob - Wreck*Former Notice - 1263(T)/2010 is cancelled*

Maritime Safety Queensland (AA681210)

Aus 830 [681/2013]

Insert	dangerous wreck	16° 46'.88 S	145° 42'.20 E
--------	-----------------	--------------	---------------

Delete	depth, 4,m	16° 46'.8 S	145° 42'.4 E
--------	------------	-------------	--------------

AXA 0830T [681/2013]

Insert	dangerous wreck	16° 46'.88 S	145° 42'.20 E
--------	-----------------	--------------	---------------

Delete	depth, 4,m	16° 46'.8 S	145° 42'.4 E
--------	------------	-------------	--------------

684* AUSTRALIA - QUEENSLAND - Cooktown - Light buoy*Former Notice - 1285(T)/2011 is cancelled*

Maritime Safety Queensland (AA681210)

Aus 270 (plan, Cooktown) [385/2012]

Substitute	starboard lateral conical light buoy, <i>Fl.G.2-5s No3</i> , without topmark for light beacon	15° 27'.32 S	145° 15'.20 E
------------	--	--------------	---------------

685* AUSTRALIA - QUEENSLAND - Yorke Islands to Dugong Islet - Wrecks*Former Notices - 1333(T)/2010, 223(T)/2011 are cancelled*

Maritime Safety Queensland (AA681210)

Aus 376 [325/2013]

Insert	safe clearance depth, <i>10m</i> , enclosed by danger circle with legend, <i>Wk</i>	10° 31'.31 S	143° 13'.97 E
--------	--	--------------	---------------

	safe clearance depth, <i>35m</i> , enclosed by danger circle with legend, <i>Wk (PA)</i>	9° 47'.46 S	143° 32'.88 E
--	---	-------------	---------------

Aus 377 [576/2013]

Insert	safe clearance depth, <i>35m</i> , enclosed by danger circle with legend, <i>Wk (PA)</i>	9° 47'.46 S	143° 32'.88 E
--------	---	-------------	---------------

Aus 837 [1246/2012]

Insert	safe clearance depth, <i>10m</i> , enclosed by danger circle with legend, <i>Wk</i>	10° 31'.31 S	143° 13'.97 E
--------	--	--------------	---------------

Aus 839 [379/2013]

Insert	safe clearance depth, <i>10m</i> , enclosed by danger circle with legend, <i>Wk</i>	10° 31'.31 S	143° 13'.97 E
--------	--	--------------	---------------

Aus 840 [1246/2012]

Insert	safe clearance depth, <i>35m</i> , enclosed by danger circle with legend, <i>Wk (PA)</i>	9° 47'.46 S	143° 32'.88 E
--------	---	-------------	---------------

686* PAPUA NEW GUINEA - Buka Passage - Beacons; wrecks*Former Notice - 564(T)/2012 is cancelled*

National Maritime Safety Authority PNG Notices 26/2013, 27/2013, 28/2013 (AA680926, AA681698)

Aus 684 (plan, Buka Passage) [429/2012]

Insert	stranded wreck	5° 27'.706 S	154° 37'.087 E
	stranded wreck	5° 26'.782 S	154° 38'.969 E
	stranded wreck	5° 26'.699 S	154° 39'.458 E
Substitute	beacon without topmark for beacon	5° 27'.01 S	154° 38'.71 E
	danger circle for beacon	5° 26'.84 S	154° 38'.93 E
	beacon without topmark for beacon	5° 26'.85 S	154° 39'.10 E
	beacon without topmark for beacon	5° 26'.71 S	154° 39'.38 E
Delete	depth, 7 ₄ m	5° 26'.71 S	154° 39'.47 E
	jetty, centred on	5° 26'.59 S	154° 39'.81 E

687* AUSTRALIA - QUEENSLAND - Weipa - South Channel - Depths

Maritime Safety Queensland (AA682448)

Aus 4 (plan, Port of Weipa) [33/2013]

Insert	depth, 12 ₂ m	12° 40'.209 S	141° 49'.310 E
	depth, 11 ₃ m	12° 40'.283 S	141° 49'.268 E
Delete	depth, 11 ₁ m	12° 40'.26 S	141° 49'.34 E

688* AUSTRALIA - QUEENSLAND - Karumba - Light buoy*Former Notice - 414(T)/2012 is cancelled*

Maritime Safety Queensland (AA681210)

Aus 6 [455/2011]

Substitute	starboard lateral conical light buoy, <i>Fl.G.4s</i> No3, without topmark for light beacon	17° 25'.86 S	140° 43'.66 E
------------	---	--------------	---------------

689* AUSTRALIA - WESTERN AUSTRALIA - Dampier - Light buoys

MetOcean Engineers (AA679768)

Aus 58 [581/2013]

Move	light buoy	20° 32'.88 S	116° 43'.11 E
	to	20° 32'.824 S	116° 42'.973 E
	light buoy	20° 33'.05 S	116° 43'.03 E
	to	20° 32'.943 S	116° 43'.025 E

Aus 59 [639/2013]

Move	light buoy	20° 32'.88 S	116° 43'.11 E
	to	20° 32'.824 S	116° 42'.973 E
	light buoy	20° 33'.05 S	116° 43'.03 E
	to	20° 32'.943 S	116° 43'.025 E

690* AUSTRALIA - WESTERN AUSTRALIA - Dampier Archipelago - Light buoys northwards

MetOcean Engineers (AA679768)

Aus 327 [581/2013]

Delete	light buoy	18° 45'.4 S	117° 01'.3 E
	light buoy	19° 31'.4 S	117° 02'.6 E

Aus 741 [581/2013]

Delete	light buoy	19° 31'.4 S	117° 02'.6 E
--------	------------	-------------	--------------

691* AUSTRALIA - WESTERN AUSTRALIA - Barrow Island - Pipeline

Chevron Australia Pty Ltd (AA669419 - AA669425)

Aus 327 [690/2013]

Insert	accompanying block	21° 00'.0 S	115° 37'.0 E
--------	--------------------	-------------	--------------

Aus 328 [583/2013]

Insert	accompanying block	20° 55'.0 S	115° 30'.0 E
--------	--------------------	-------------	--------------

Aus 4723 (INT 723) [579/2013]

Insert	accompanying block	21° 00'.0 S	115° 40'.0 E
--------	--------------------	-------------	--------------

Aus 4725(INT725) [504/2013]

Insert	accompanying block	20° 50'.0 S	115° 45'.0 E
--------	--------------------	-------------	--------------

AX 04723U [579/2013]

Insert	accompanying block	21° 00'.0 S	115° 40'.0 E
--------	--------------------	-------------	--------------

692* AUSTRALIA - WESTERN AUSTRALIA - Barrow Island - Well northwestwards

Woodside Energy Ltd (AA681294)

Aus 328 [691/2013]

Insert	depth, 1444m, enclosed by danger circle with legend, Well	19° 13'.92 S	114° 25'.56 E
--------	--	--------------	---------------

Aus 4723 (INT 723) [691/2013]

Insert	depth, 1444m, enclosed by danger circle with legend, Well	19° 13'.9 S	114° 25'.6 E
--------	--	-------------	--------------

AX 04723U [691/2013]

Insert	depth, 1444m, enclosed by danger circle with legend, Well	19° 13'.9 S	114° 25'.6 E
--------	--	-------------	--------------

693* AUSTRALIA - SOUTH AUSTRALIA - Port Pirie - Beacons

Department of Planning, Transport and Infrastructure SA (AA682301)

Aus 136 [586/2013]

Move	beacon	33° 06'.8 S	137° 56'.4 E
	to	33° 06'.93 S	137° 56'.33 E

Aus 136 (plan, Port Pirie)

Delete	beacon	33° 08'.88 S	138° 00'.85 E
--------	--------	--------------	---------------

Aus 136 (plan, Approaches to Port Pirie)

Move	beacon	33° 06'.84 S	137° 56'.41 E
	to	33° 06'.930 S	137° 56'.331 E

Delete	depth, 44m	33° 06'.91 S	137° 56'.34 E
	beacon	33° 05'.90 S	137° 59'.64 E
	beacon	33° 08'.88 S	138° 00'.85 E

694* AUSTRALIA - SOUTH AUSTRALIA - Rapid Head - Light buoy*Former Notice - 129(T)/2012 is cancelled*

Department of Planning, Transport and Infrastructure SA Notice 23/2013 (AA680481, AA681358)

Aus 485 [586/2013]

Substitute	west cardinal pillar light buoy, Q(9)15s, with topmark for light buoy	35° 28'.8 S	138° 09'.4 E
------------	---	-------------	--------------

Aus 780 [252/2013]

Insert	west cardinal pillar light buoy, Q(9)15s, with topmark	35° 28'.81 S	138° 09'.38 E
--------	--	--------------	---------------

Delete	light buoy	35° 28'.8 S	138° 09'.4 E
--------	------------	-------------	--------------

695* AUSTRALIA - TASMANIA - Macquarie Harbour - Light buoys

Marine and Safety Tasmania Notice M72/2013 (AA680922, AA683490, AA683491)

Aus 177 [1037/2012]

Insert	east cardinal pillar light buoy, Q(3)10s, with topmark	42° 15'.11 S	145° 19'.57 E
	east cardinal pillar light buoy, Q(3)10s, with topmark	42° 16'.85 S	145° 21'.53 E
	east cardinal pillar light buoy, Q(3)10s, with topmark	42° 18'.65 S	145° 23'.55 E
	out of position east cardinal pillar light buoy, Q(3)10s, with topmark	42° 20'.48 S	145° 25'.58 E
	west cardinal pillar light buoy, Q(9)15s, with topmark	42° 21'.38 S	145° 24'.25 E
	west cardinal pillar light buoy, Q(9)15s, with topmark	42° 20'.24 S	145° 22'.87 E
	west cardinal pillar light buoy, Q(9)15s, with topmark	42° 17'.70 S	145° 20'.65 E
	west cardinal pillar light buoy, Q(9)15s, with topmark	42° 15'.54 S	145° 18'.75 E

Delete	depth, 44m	42° 15'.0 S	145° 19'.7 E
--------	------------	-------------	--------------

696* AUSTRALIA - VICTORIA - Port Phillip - Frankston to Beaumaris Bay - Nav aids
 Victorian Notice 90/2013 (AA682401)

Aus 143 [591/2013]

Insert	special light beacon, <i>Fl. Y. 6s</i> , with topmark	38° 09'.11 S	145° 06'.48 E
	special topmark	38° 08'.50 S	145° 07'.00 E
	special beacon, with topmark	38° 08'.22 S	145° 07'.07 E
	special beacon, with topmark	38° 07'.95 S	145° 07'.15 E
	special beacon, with topmark	38° 07'.69 S	145° 07'.20 E
	special beacon, with topmark	37° 59'.35 S	145° 03'.27 E
	special beacon, with topmark	37° 59'.46 S	145° 02'.85 E
	special beacon, with topmark	37° 59'.70 S	145° 02'.52 E
Delete	depth, 4 ₉ m	37° 59'.5 S	145° 03'.0 E

Aus 155 [643/2013]

Insert	special beacon, with topmark	37° 59'.471 S	145° 03'.504 E
	special beacon, with topmark	37° 59'.352 S	145° 03'.266 E
	special beacon, with topmark	37° 59'.462 S	145° 02'.854 E
	special beacon, with topmark	37° 59'.699 S	145° 02'.524 E
Delete	buoy	37° 59'.51 S	145° 03'.48 E
	buoy	37° 59'.45 S	145° 03'.32 E
	depth, 4 ₁ m	37° 59'.43 S	145° 02'.89 E

697(T)/2013 AUSTRALIA - NEW SOUTH WALES - Cape Baily to Ben Buckler - Scientific instruments*Former Notice - 748(T)/2011 is cancelled**Date - Until 30 June 2015*

Sydney Institute of Marine Science (AA375220, AA420046, AA545275, AA683400)

Subsea moorings (25 metres below the surface) exist in positions as follows:

33° 53'.76 S 151° 17'.30 E	33° 53'.99 S 151° 17'.30 E
33° 54'.23 S 151° 17'.72 E	33° 54'.51 S 151° 18'.14 E
33° 54'.76 S 151° 18'.56 E	33° 55'.02 S 151° 19'.01 E
33° 55'.28 S 151° 19'.45 E	33° 55'.54 S 151° 19'.89 E
33° 55'.80 S 151° 20'.31 E	33° 56'.06 S 151° 21'.17 E
33° 56'.32 S 151° 22'.61 E	33° 56'.60 S 151° 22'.06 E
33° 56'.85 S 151° 22'.50 E	33° 57'.12 S 151° 22'.95 E
33° 57'.40 S 151° 23'.39 E	33° 57'.91 S 151° 24'.25 E
33° 58'.65 S 151° 23'.84 E	33° 58'.20 S 151° 24'.64 E
33° 58'.49 S 151° 25'.08 E	33° 58'.77 S 151° 25'.57 E
33° 59'.08 S 151° 26'.06 E	33° 59'.33 S 151° 26'.47 E
33° 59'.97 S 151° 27'.33 E	34° 00'.21 S 151° 27'.85 E
34° 00'.48 S 151° 28'.27 E	34° 00'.77 S 151° 28'.74 E
34° 01'.33 S 151° 29'.16 E	34° 01'.31 S 151° 29'.63 E
34° 01'.59 S 151° 30'.08 E.	

Chart temporarily affected – Aus 197 – Aus 200 – Aus 808 – Aus 809 – AX 63200 – AX 00808S – AX 00809S**698(T)/2013 AUSTRALIA - NEW SOUTH WALES - Port Jackson - Glebe Island - Harbour works***Date - Until 16 August 2013*

Sydney Ports Corporation Notice 19/2013 (AA683785)

Repair works on the Glebe Island Bridge (33° 52'.10 S 151° 11'.15 E) are in progress.

The eastern channel is closed to traffic and is marked by special spar light buoys, *Fl.Y.3s*, across both entrances to the channel.
The western channel is open to traffic.

Mariners are advised to navigate with caution in the area.

Chart temporarily affected – Aus 200 – Aus 202 – AX 00202T**699(T)/2013 AUSTRALIA - NEW SOUTH WALES - Cabbage Tree Bay to Curl Curl Head - Scientific instruments***Former Notice - 750(T)/2011 is cancelled**Date - Until 30 June 2015*

Sydney Institute of Marine Science (AA353372, AA353373, AA424523, AA545275, AA683400)

Subsurface scientific instruments exist in positions:

33° 48'.03 S 151° 18'.03 E
33° 47'.98 S 151° 17'.65 E
33° 47'.99 S 151° 17'.73 E
33° 47'.92 S 151° 17'.61 E
33° 47'.93 S 151° 17'.69 E.

Chart temporarily affected – Aus 197 – Aus 200 – Aus 201 – AX 63200 – AX 00201T

700(T)/2013 AUSTRALIA - NEW SOUTH WALES - Newcastle - Depth information

Former Notice - 552(T)/2013 is cancelled

Newcastle Port Corporation (AA682862)

Available depths as at 24 June 2013:

<i>Berth</i>	<i>Metres</i>	<i>Remarks</i>
Eastern Basin 1	11.3	
Eastern Basin 2 North of Ch 450	11.6	
Eastern Basin 2 South of Ch 450	11.6	
Western Basin 3	11.6	
Western Basin 4	11.6	
Channel Berth	9.7	
* Dyke 1	12.6	
* Dyke 2	12.3	
Dyke 4	16.5	
* Dyke 5	16.2	
Dyke 6	5.0	
Mayfield 4 Ch 27 to 266	11.8	
BHP Wharf 6 to Ch 1050	7.3	
* Kooragang 2	11.4	
* Kooragang 2 North Dolphin Ch 182 to 228	11.4	
* Kooragang 2 South Dolphin Ch -92 to 00	11.1	
* Kooragang 3 Ch -40 to 00	11.8	
* Kooragang 3 Ch 00 to 220	13.3	
* Kooragang 4	16.3	
Kooragang 5	16.5	
* Kooragang 6	16.2	
* Kooragang 7	16.2	
* Kooragang 8	16.0	
* Kooragang 9	15.9	
Kooragang 10	16.3	
Throsby 1	8.4	
Carrington Wharf		To be sounded as and when required
Foreshore Park Berth	5.9	
Elgo Wharf		To be sounded as and when required
<i>Channels</i>		
Entrance Approach	17.7	
Entrance Channel (18.0m)	18.0	
Entrance Channel (17.4m)	17.4	
Entrance Channel (16.8m)	16.8	
Entrance Channel (16.2m)	16.2	
Entrance Channel to Horseshoe	15.2	
Horseshoe	15.0	
Steelworks Channel to Swinging Basin	15.0	
Swinging Basin	15.0	
Hunter River South Arm (Kooragang 6 to buoy 16)	15.0	
Hunter River South Arm (buoy 16 to buoy 20)	15.0	
Basin Cutting	12.6	
Basin Area to Eastern & Western Basin Berths	12.3	
Basin Area to 1 Throsby	9.4	
Stockton Crossing	3.6	

* Indicates new or revised entry.

Chart temporarily affected - Aus207 - Aus208

701(T)/2013 AUSTRALIA - QUEENSLAND - Moreton Bay - Ship to ship transfer*Former Notice* - 461(T)/2013 is cancelled*Date* - Until 16 September 2013

Maritime Safety Queensland Notice 536(T)/2013 (AA683397)

Ship to ship transfer of LPG will be conducted at STS1 anchorage (27° 17'.25 S 153° 16'.56 E). An exclusion zone (1850 metres radius) exists around transfer operations.

Chart temporarily affected – Aus 236**702(T)/2013 AUSTRALIA - QUEENSLAND - Bundaberg - Anchoring prohibited revoked***Former Notice* - 1386(T)/2010 is cancelled

Maritime Safety Queensland (AA683151)

Cancel this notice on receipt.

Chart formerly affected – Aus 242**703(T)/2013 AUSTRALIA - QUEENSLAND - Boyne River - Shoaling; nav aids***Former Notice* - 415(T)/2011 is cancelled

Maritime Safety Queensland Notice 529(T)/2013 (AA682825)

Shoaling exists within the entrance and approach channel to Boyne River (23° 56'.5 S 151° 21'.3 E).

A special light buoy, *Fl. Y.2.5s*, exists in position 23° 55'.64 S 151° 22'.06 E.

No5 starboard beacon (23° 55'.85 S 151° 21'.55 E) has been altered to a port beacon and renumbered No6.

No1, No3, No9 and No10 beacons have been removed and lateral buoys exist in situ.

Mariners are advised to navigate with caution in the area.

Chart temporarily affected – Aus 246**704(T)/2013 AUSTRALIA - QUEENSLAND - Gladstone - East Banks - Scientific instruments***Date* - Until 4 July 2014

Maritime Safety Queensland Notice 524(T)/2013 (AA682836)

Scientific instruments marked by special light buoys, *Q. Y*, exist in positions 23° 52'.06 S 151° 29'.30 E and 23° 51'.60 S 151° 26'.59 E.

Chart temporarily affected – Aus 246 – Aus 819**705(T)/2013 AUSTRALIA - QUEENSLAND - Gladstone - Facing Island - Light buoy restored***Former Notice* - 153(T)/2013 is cancelled

Maritime Safety Queensland (AA683139)

Cancel this notice on receipt.

Chart formerly affected – Aus 819

706(T)/2013 AUSTRALIA - QUEENSLAND - Gladstone - Hamilton Point to North Passage Island - Scientific instruments recovered

Former Notice - 344(T)/2013 is cancelled
Maritime Safety Queensland (AA683139)

Cancel this notice on receipt.

Chart formerly affected – Aus 245

707(T)/2013 AUSTRALIA - QUEENSLAND - Keppel Bay - Sea Hill Point - Light buoy withdrawn

Former Notice - 209(T)/2013 is cancelled
Maritime Safety Queensland (AA683139)

Cancel this notice on receipt.

Chart formerly affected – Aus 247 – Aus 265 – Aus 819

708(T)/2013 AUSTRALIA - QUEENSLAND - Keppel Bay - Scientific instrument recovered

Former Notice - 464(T)/2013 is cancelled
Maritime Safety Queensland (AA683139)

Cancel this notice on receipt.

Chart formerly affected – Aus 247 – Aus 265 – Aus 819

709(T)/2013 AUSTRALIA - QUEENSLAND - Port Alma - Scientific instruments

Date - Until 4 July 2014
Maritime Safety Queensland Notice 525(T)/2013 (AA682840)

Scientific instruments marked by special light buoys, *Fl. Y.3s*, exist in positions 23° 34'.10 S 150° 51'.53 E and 23° 31'.59 S 150° 55'.39 E.

Chart temporarily affected – Aus 247 – Aus 265

710(T)/2013 AUSTRALIA - QUEENSLAND - Bluff Rock to Wreck Point - Scientific instruments recovered

Former Notice - 302(T)/2012 is cancelled
Maritime Safety Queensland (AA683139)

Cancel this notice on receipt.

Chart formerly affected – Aus 247 – Aus 819 – Aus 820 – AX 00820S

711(T)/2013 AUSTRALIA - CORAL SEA - Saumarez Reefs - Live firing

Date - Until 23 July 2013
Royal Australian Air Force (AA682279)

Military exercise area R725 will be activated for air to surface weapon firing from 12 to 23 July 2013.

Chart temporarily affected – Aus 612

712(T)/2013 AUSTRALIA - QUEENSLAND - Mackay - Depth information

Former Notice - 955(T)/2012 is cancelled
Maritime Safety Queensland Notice 1170(T)/2012 (AA633129), *Note*: superseded by notice 1090/2012.

Cancel this notice on receipt.

Chart formerly affected – Aus 250

713(T)/2013 AUSTRALIA - QUEENSLAND - Fitzroy Island - Light buoy re-established*Former Notice* - 307(T)/2013 is cancelled

Maritime Safety Queensland (AA681210)

Cancel this notice on receipt.

Chart formerly affected – Aus 830**714(T)/2013 AUSTRALIA - QUEENSLAND - Cairns - Dredging operations***Date* - Until 17 August 2013

Maritime Safety Queensland Notice 537(T)/2013 (AA683398)

The dredge *Brisbane* is conducting dredging operations in the Entrance Channel (16° 52'.3 S 145° 48'.5 E) and Trinity Inlet (16° 56'.0 S 145° 47'.0 E).

Mariners are advised to navigate with caution in the area.

Chart temporarily affected – Aus 262 – Aus 263 – Aus 264 – Aus 830 – AX 63262 – AXA 0830T**715(T)/2013 AUSTRALIA - QUEENSLAND - Cairns - Scientific instruments***Former Notice* - 216(T)/2013 is cancelled*Date* - Until 31 August 2013

Maritime Safety Queensland Notice 518(T)/2013 (AA683193)

Scientific instruments marked by special light buoys, Q.Y, exist in the vicinity of positions 16° 51'.26 S 145° 49'.03 E and 16° 52'.14 S 145° 48'.52 E.

Chart temporarily affected – Aus 262 – AX 63262**716(T)/2013 AUSTRALIA - QUEENSLAND - Cairns - Light buoys withdrawn***Former Notice* - 308(T)/2013 is cancelled

Maritime Safety Queensland (AA681210)

Cancel this notice on receipt.

Chart formerly affected – Aus 262 – Aus 263 – Aus 830**717(T)/2013 AUSTRALIA - QUEENSLAND - Cairns - Trinity Inlet - Wreck salvaged***Former Notice* - 705(T)/2012 is cancelled

Maritime Safety Queensland (AA681210)

Cancel this notice on receipt.

Chart formerly affected – Aus 263 – Aus 264**718(T)/2013 AUSTRALIA - QUEENSLAND - Taylor Point - Obstruction removed***Former Notice* - 749(T)/2012 is cancelled

Maritime Safety Queensland (AA681210)

Cancel this notice on receipt.

Chart formerly affected – Aus 830 – AX 6027S

719(T)/2013 AUSTRALIA - QUEENSLAND - Cooktown - Light buoy re-established

Former Notice - 1143(T)/2012 is cancelled
 Maritime Safety Queensland (AA681210)

Cancel this notice on receipt.

Chart formerly affected – Aus 270

720(T)/2013 AUSTRALIA - QUEENSLAND - Weipa - Dredging operations completed

Former Notice - 603(T)/2013 is cancelled
 Maritime Safety Queensland Notice 537(T)/2013 (AA683398)

Cancel this notice on receipt.

Chart formerly affected – Aus 4

721(T)/2013 AUSTRALIA - NORTHERN TERRITORY - Quail Island - Military exercise completed

Former Notice - 606(T)/2013 is cancelled
 Gibson Nominees Pty Ltd (AA677939)

Cancel this notice on receipt.

Chart formerly affected – Aus 29 – Aus 309 – Aus 316 – Aus 722 – AX 00309T – AX 00309U – AX 00722T

722(T)/2013 AUSTRALIA - WESTERN AUSTRALIA - Scott Reef - Seismic survey completed westwards

Former Notice - 607(T)/2013 is cancelled
 Shell Australia (AA682814)

Cancel this notice on receipt.

Chart formerly affected – Aus 322 – Aus 4722 (INT 722) – AX 00322U – AX 04722U

723(T)/2013 AUSTRALIA - WESTERN AUSTRALIA - Port Hedland - Depth information

Former Notice - 722(T)/2010 is cancelled
 Port Hedland Port Authority Notice 10/2013 (AA683335)

Available depths as at 27 June 2013:

<i>Berth</i>	<i>Metres</i>
PHPA berth 1	12.0
PHPA berth 2	11.2
PHPA berth 3	12.2
BHP Billiton Nelson Point berth A	18.0
BHP Billiton Nelson Point berth B	17.5
BHP Billiton Finucane Island berth C	17.9
BHP Billiton Finucane Island berth D	19.2
Anderson Point berth 1	19.1
Anderson Point berth 2	19.7
* Anderson Point berth 4	18.7

* Indicates new or revised entry.

Chart temporarily affected – Aus 52 – Aus 54

724(T)/2013 AUSTRALIA - WESTERN AUSTRALIA - Port Hedland - Drilling operations completed

Former Notice - 610(T)/2013 is cancelled
Port Hedland Port Authority (AA683779)

Cancel this notice on receipt.

Chart formerly affected – Aus 54

725(P)/2013 AUSTRALIA - WESTERN AUSTRALIA - Barrow Island - Shoaling

Date - On or about 26 July 2013
Chevron Australia Pty Ltd (AA683970 - AA683972)

The 0.5m shoal (20° 31'.63 S 115° 29'.51 E) extends 400m southwest to 20° 51'.86 S 115° 29'.20 E.

Note: a permanent Notice to Mariners will be issued in Edition 15 (26 July 2013).

Chart which will be affected – Aus 327 – Aus 328 – Aus 742 – Aus 743

726(T)/2013 AUSTRALIA - WESTERN AUSTRALIA - Barrow Island - Drill rig northwestwards

Former Notice - 419(T)/2013 is cancelled
Date - Until 22 August 2013
Australian Maritime Safety Authority Auscoast Warning 178/2013 (AA683766), Chevron Australia Pty Ltd (AA683959)

Drill rig *Atwood Osprey* is conducting drilling operations in position 20° 27'.61 S 114° 50'.52 E.

Chart temporarily affected – Aus 328 – Aus 4723 (INT 723) – AX 04723U

727(T)/2013 AUSTRALIA - WESTERN AUSTRALIA - Airlie Island - Drill rig westwards moved

Former Notice - 427(T)/2013 is cancelled
MODU ENSCO 104 (AA682813)

Cancel this notice on receipt.

Chart formerly affected – Aus 64 – Aus 328 – Aus 743

728(T)/2013 AUSTRALIA - SOUTH AUSTRALIA - Great Australian Bight - Seismic survey completed

Former Notice - 318(T)/2013 is cancelled
Fugro Hydrographic Surveys Ltd (AA682482)

Cancel this notice on receipt.

Chart formerly affected – Aus 4709 (INT 709) – Aus 4727 (INT 727)

729(T)/2013 AUSTRALIA - TASMANIA - Sugarloaf Rock to De Witt Island - Scientific instruments recovered

Former Notice - 1110(T)/2012 is cancelled
Marine and Safety Tasmania (AA683960)

Cancel this notice on receipt.

Chart formerly affected – Aus 793 – Aus 794

730(T)/2013 AUSTRALIA - VICTORIA - Port Phillip - Wilson Spit - Light beacon restored

Former Notice - 1229(T)/2012 is cancelled
Parks Victoria (AA683798)

Cancel this notice on receipt.

Chart formerly affected – Aus 157

12 July 2013

731(P)/2013 AUSTRALIA - VICTORIA - Port Phillip - Port Melbourne Channel - Light beacons to be established; light buoys to be withdrawn

Date - On or about 9 September 2013

Victorian Notice 87(T)/2013 (AA683154)

Special light beacons, VQ(4)Y.4s, will be established as follows:

Number	Position
T1	38° 00'.00 S 144° 55'.66 E
T2	38° 00'.00 S 144° 54'.87 E
T9	37° 57'.81 S 144° 55'.73 E
T10	37° 57'.77 S 144° 55'.03 E
T15	37° 55'.62 S 144° 55'.80 E
T16	37° 55'.60 S 144° 55'.19 E
T20	37° 54'.54 S 144° 55'.22 E
T26	37° 52'.68 S 144° 55'.28 E.

Special light buoys, VQ(4)Y.4s, will be withdrawn as follows:

Number	Position	Number	Position
T1	38° 00'.00 S 144° 55'.66 E	T2	38° 00'.01 S 144° 55'.04 E
T3	37° 59'.44 S 144° 55'.68 E	T4	37° 59'.43 S 144° 55'.06 E
T5	37° 58'.87 S 144° 55'.69 E	T6	37° 58'.86 S 144° 55'.08 E
T7	37° 58'.30 S 144° 55'.71 E	T8	37° 58'.29 S 144° 55'.10 E
T9	37° 57'.81 S 144° 55'.73 E	T10	37° 57'.80 S 144° 55'.12 E
T11	37° 57'.32 S 144° 55'.75 E	T12	37° 57'.31 S 144° 55'.13 E
T13	37° 56'.58 S 144° 55'.77 E	T14	37° 56'.57 S 144° 55'.16 E
T15	37° 55'.91 S 144° 55'.79 E	T16	37° 55'.89 S 144° 55'.17 E
T17	37° 55'.40 S 144° 55'.81 E	T18	37° 55'.39 S 144° 55'.20 E
T20	37° 54'.54 S 144° 55'.22 E	T22	37° 53'.85 S 144° 55'.25 E
T24	37° 53'.18 S 144° 55'.27 E	T26	37° 52'.68 S 144° 55'.29 E
T28	37° 52'.31 S 144° 55'.19 E.		

Chart which will be affected – Aus 143 – Aus 154 – Aus 155

732(T)/2013 AUSTRALIA - VICTORIA - Port Phillip - River Yarra - Victoria Dock - Harbour works

Date - Until 31 March 2014

Victorian Notice 94(T)/2013 (AA682953)

Rehabilitation works and diving operations are in progress at Victoria Dock (37° 49'.09 S 144° 55'.74 E).

Barges and pontoons are on site.

Mariners are advised to navigate with caution in the area.

Chart temporarily affected – Aus 154

733(T)/2013 AUSTRALIA - VICTORIA - Port Phillip - Port Melbourne - Station Pier - Harbour works completed

Former Notice - 365(T)/2013 is cancelled

Victorian Notice 96/2013 (AA682940)

Cancel this notice on receipt.

Chart formerly affected – Aus 154

734(T)/2013 AUSTRALIA - VICTORIA - Port Phillip - Port Melbourne - Station Pier - Harbour works completed

Former Notice - 491(T)/2013 is cancelled

Victorian Notice 61(T)/2013 (AA669337)

Cancel this notice on receipt.

Chart formerly affected – Aus 154

12 July 2013

735(T)/2013 AUSTRALIA - VICTORIA - Kilcunda - Works completed

Former Notice - 368(T)/2013 is cancelled
Victorian Notice 44/2013 (AA664839)

Cancel this notice on receipt.

Chart formerly affected – Aus 150 – Aus 801

736(T)/2013 AUSTRALIA - VICTORIA - Toora Channel - Light beacon restored

Former Notice - 479(T)/2012 is cancelled
Gippsland Ports (AA683197)

Cancel this notice on receipt.

Chart formerly affected – Aus 181

737(T)/2013 AUSTRALIA - BASS STRAIT - Platform and pipeline works completed

Former Notice - 448(T)/2011 is cancelled
Esso Australia Pty Ltd (AA682906)

Cancel this notice on receipt.

Chart formerly affected – Aus 357 – Aus 487

738(T)/2013 AUSTRALIA - TEMPORARY AND PRELIMINARY NOTICES

Former Notice - 371(T)/2013 is cancelled

Australian Hydrographic Service (AA667596)

<i>Notice</i>	<i>Charts affected</i>	<i>Locality and Subject</i>
		CORAL SEA
711/2013	Aus612	<i>Saumarez Reefs</i> Live firing
		NEW SOUTH WALES
1139/2011	Aus198-199	<i>Botany Bay</i> Harbour works
297/2013	Aus196-198-199	Light buoy established
		<i>Broken Bay</i>
457/2013	Aus197-204-215-489-809-4643-AX00215T-00809S	Barrenjoey Head-Light range reduced
		<i>Cabbage Tree Bay to Curl Curl Head</i>
699/2013	Aus197-200-201-AX63200-00201T	Scientific instruments
		<i>Cape Baily to Ben Buckler</i>
697/2013	Aus197-200-808-809-AX63200-00808S-00809S	Scientific instruments
		<i>Clarence River</i>
299/2013	Aus222	Harbour works; Scientific instrument recovered
		<i>Newcastle</i>
700/2013	Aus207-208	Depth information <i>Port Jackson</i>
593/2013	Aus200-202-AX00202T	Mooring buoys
698/2013	Aus200-202-AX00202T	Glebe Island-Harbour works
		<i>Port Kembla</i>
410/2011	Aus194-195	Spoil ground
864/2011	Aus194-195	Obstruction
393/2013	Aus194	Depth information
		<i>Sydney</i>
337/2013	Aus200-202-AX00202T	Harbour works
		NORTHERN TERRITORY
		<i>Apsley Strait</i>
59/2013	Aus22-23-309-722-AX00309T-00309U-00722T	Light buoys off station
		<i>Darwin</i>
758/2012	Aus26-28-AX72026	Dredging operations
814/2012	Aus24-26-AX72026	Light buoy withdrawn
910/2012	Aus28	Obstruction
1003/2012	Aus24-26-AX72026	Lee Point to Fannie Bay-Obstructions
1004/2012	Aus24-27-28	Depth information
1096/2012	Aus26-28-AX72026	Pontoon
1148/2012	Aus26-28-AX72026	Scientific instruments
410/2013	Aus26-27-28-AX00026T	Channel Island to Preston Point-Scientific instruments
518/2013	Aus26-AX00026T	Middle Ground-Obstruction
605/2013	Aus26-27-28-AX00026T	East Arm-Light buoys
654/2013	Aus24-26-27-28-AX00026T	West Point to Elizabeth River-Light buoys
655/2013	Aus26-28-AX00026T	East Arm-Blaydin Point-Harbour works
		<i>Fenton Patches</i>
1146/2012	Aus309-722-AX72309-72722-00309U	Scientific instruments

738(T)/2013 AUSTRALIA - TEMPORARY AND PRELIMINARY NOTICES (continued)

<i>Notice</i>	<i>Charts affected</i>	<i>Locality and Subject</i>
QUEENSLAND		
56/2012	Aus255-826	<i>Abbot Bay</i> Light beacon unlit
214/2013	Aus255-826	<i>Abbot Point</i> Scientific instruments
819/2008 667/2009 1210/2011	Aus252-253-268-AU5268P2 Aus252-253-268-AU5268P2 Aus268	<i>Airlie Beach</i> Light buoys established Wreck Obstructions
872/2011	Aus254-825	<i>Bait Reef</i> Light beacon destroyed
703/2013	Aus246	<i>Boyne River</i> Shoaling; nav aids
105/2013 598/2013 599/2013 600/2013 648/2013	Aus243-817-818 Aus242-243 Aus242 Aus242 Aus242	<i>Bundaberg</i> Obstruction northeastwards Depth information Depths Jetty; light Nav aids established
262/2013	Aus242	<i>Burnett River</i> Wreck
107/2013 404/2013 714/2013 715/2013	Aus262-263-AX63262 Aus262-263-264-830 Aus262-263-264-830-AXA0830T-63262 Aus262-AX63262	<i>Cairns</i> Scientific instrument Depth information Dredging operations Scientific instruments
926/2011 606/2012	Aus826-827 Aus826-827	<i>Cape Bowling Green</i> Scientific instrument Light buoys
559/2013	Aus256-827	<i>Cape Cleveland</i> Wreck
653/2013	Aus270	<i>Cooktown</i> Depth information
602/2012	Aus818	<i>Curtis Channel</i> Wreck
400/2013	Aus252-253	<i>Daydream Island</i> Lights unlit
859/2012	Aus253-254	<i>Dent Island</i> Light beacon unlit; light buoy established
743/2012	Aus246-819	<i>Ethel Rocks</i> Wreck eastwards
211/2013	Aus819	<i>Fitzroy River</i> Wreck

738(T)/2013 AUSTRALIA - TEMPORARY AND PRELIMINARY NOTICES (continued)

<i>Notice</i>	<i>Charts affected</i>	<i>Locality and Subject</i>
		<i>Gladstone</i>
418/2011	Aus245	Anchorage area
470/2011	Aus245-819	Scientific instruments
653/2011	Aus244-245	Barney Point-Harbour works
1204/2011	Aus244-245	Rich Rocks-Light buoy
245/2012	Aus244-245	Pipelines
950/2012	Aus244-245	Light buoys
951/2012	Aus244-245	Light buoys
1205/2012	Aus244-245	Scientific instrument
1270/2012	Aus244-245	Fishermans Landing Wharves-Light buoy moved
204/2013	Aus244-245-246	Depth information
205/2013	Aus244-245	Dredging operations
206/2013	Aus245	Exclusion zone
207/2013	Aus244-245	Calliope River-Light buoys
208/2013	Aus244-245	South Passage Island to North Passage Island-Dredging operations
264/2013	Aus245	Friend Point to Laird Point-Anchoring prohibited; pipeline
704/2013	Aus246-819	East Banks-Scientific instruments
		<i>Gneering Shoals</i>
304/2013	Aus815	Buoy off station Northwards
		<i>Gold Coast Seaway</i>
694/2012	Aus230	Shoaling
737/2012	Aus230	Shoaling
510/2013	Aus230	The Broadwater- Dredging operations
554/2013	Aus230	Harbour works
		<i>Great Sandy Strait</i>
801/2012	Aus240-241	Light beacon destroyed
463/2013	Aus240-241	Wreck
		<i>Hay Point</i>
1091/2011	Aus249-250-AX0249E	Scientific instruments
650/2012	Aus249-250-AX00249S	Depth information
1088/2012	Aus249-250-823	Exclusion zone; light buoys
467/2013	Aus249-250-AX00249S	Diving operations
601/2013	Aus250	Harbour works
		<i>Hervey Bay</i>
203/2013	Aus241-817	Light beacon destroyed
		<i>Hesket Rock</i>
318/2010	Aus251-823-824-AX0823E-AU421149	Light beacon destroyed
		<i>Hinchinbrook Channel</i>
862/2012	Aus259-267	Navais
161/2013	Aus259	Light buoy off station
602/2013	Aus259-828	Wreck
		<i>Hook Island</i>
460/2012	Aus252-254	Cockatoo Point-Light beacon destroyed
		<i>Io Reef</i>
1188/2010	Aus251-252-824	Light beacon destroyed; light buoy established
		<i>Karumba</i>
517/2013	Aus6	Depth information
		<i>Laguna Quays</i>
757/2011	Aus252	Lights unlit; light beacons damaged
758/2011	Aus252	Shoaling

738(T)/2013 AUSTRALIA - TEMPORARY AND PRELIMINARY NOTICES (continued)

<i>Notice</i>	<i>Charts affected</i>	<i>Locality and Subject</i>
858/2012	Aus250	<i>Mackay</i>
1090/2012	Aus250	Shoaling
158/2013	Aus249-AX00249S	Depth information
		Light beacon destroyed
702/2012	Aus256-827	<i>Magnetic Island</i>
1210/2012	Aus256	Scientific instruments
		Scientific instrument
647/2013	Aus235	<i>Mooloolaba</i>
		Shoaling
710/2008	Aus235-236	<i>Moreton Bay</i>
648/2011	Aus236	Light buoys established
1020/2011	Aus236	Bramble Bay-Bridge construction
600/2012	Aus236	Wynnum-Wreck; light buoy
645/2012	Aus236	Scarborough-Shoaling
740/2012	Aus236	Rainbow Channel-Light beacon withdrawn
1085/2012	Aus236	Coochiemudlo Island-Light beacon
1265/2012	Aus236	Peel Island-Lazaret Gutter-Beacon destroyed
145/2013	Aus235-236-237-238-814-815	Manly-Light beacon destroyed
302/2013	Aus236	Brisbane River-Navais destroyed or off station; depths
341/2013	Aus237	Garnet Rock-Light beacon destroyed; light buoy established
342/2013	Aus236	Brisbane River-Light beacon destroyed
460/2013	Aus235-814-815	Deception Bay-Dredging operations
597/2013	Aus236	North East Channel-Light buoy repositioned
645/2013	Aus235-236-237-238-814-815	Peel Island-Artificial reef
646/2013	Aus236	Brisbane River-Depth information
701/2013	Aus236	Russell Island-Pile driving
		Ship to ship transfer
826/2011	Aus258	<i>Mourilyan</i>
		Depth information
651/2013	Aus253-268	<i>Muddy Bay</i>
		Harbour works
512/2013	Aus820-AX00820S	<i>North Keppel Island</i>
		Wreck
215/2013	Aus258	<i>Oyster Point</i>
		Shoaling; obstructions
759/2011	Aus252-253-824-825	<i>Pioneer Rocks</i>
		Light beacon unlit
240/2012	Aus814	<i>Point Lookout</i>
		Scientific instruments northeastwards
210/2013	Aus265	<i>Port Alma</i>
709/2013	Aus247-265	Depth information
		Scientific instruments
1274/2012	Aus270	<i>Port Douglas</i>
		Depth information
149/2013	Aus235	<i>Pumicestone Channel</i>
		Navais destroyed or off station; depths
649/2013	Aus247-819	<i>Rosslyn Bay</i>
		Pipeline

738(T)/2013 AUSTRALIA - TEMPORARY AND PRELIMINARY NOTICES (continued)

<i>Notice</i>	<i>Charts affected</i>	<i>Locality and Subject</i>
53/2013	Aus818	<i>Round Hill Head</i> Wreck
55/2013	Aus251-824	<i>Schooner Rock</i> Light beacon destroyed; light buoy established
650/2013	Aus248-260-261-367-820-822- AX67248-67261-00260S-00260T- 00367S-00820S-00822S	<i>Shoalwater Bay</i> Live firing
763/2010 399/2013	Aus252-253-AU421148-5253P1 Aus253	<i>Shute Harbour</i> Wreck Light buoy off station
560/2013	Aus270-292-293-833-835-839-841	<i>Singleton Rock to Reeves Shoal</i> AIS trial
1191/2010	Aus252-253-824	<i>Surprise Rock</i> Light beacon destroyed; light buoy established
59/2012	Aus293-299	<i>Thursday Island</i> Depth information
1133/2009 860/2012 652/2013	Aus257-AU5257P0 Aus257 Aus256-257	<i>Townsville</i> Light beacons withdrawn; light buoys established Harbour works Depth information
401/2013	Aus826	<i>Upstart Bay</i> Light buoy off station
167/2013	Aus4	<i>Weipa</i> Depth information
213/2013	Aus252-253	<i>Whitehaven Bay</i> Light beacon destroyed
1189/2010 1394/2010 422/2011	Aus252-254-824 Aus254 Aus252-254-824	<i>Whitsunday Group</i> Platypus Rock-Light beacon destroyed; light buoy established The Narrows-Buoy off station Spitfire Rock-Light beacon destroyed
1193/2010 1209/2012	Aus252-253-254 Aus252-253	<i>Whitsunday Island</i> Reef Point-Light beacon destroyed; light buoy established Craig Point-Wreck
SOUTH AUSTRALIA		
73/2013	Aus4727	<i>Great Australian Bight</i> Ceduna Terrace-Scientific instruments
1344/2011	Aus781	<i>Gulf St Vincent</i> Obstruction
720/2008 769/2012 617/2013	Aus137 Aus137 Aus137	<i>Port Adelaide</i> Shoaling Depth information Dredging operations
71/2012	Aus133	<i>Wallaroo</i> Depth information

738(T)/2013 AUSTRALIA - TEMPORARY AND PRELIMINARY NOTICES (continued)

<i>Notice</i>	<i>Charts affected</i>	<i>Locality and Subject</i>
437/2013	Aus135-136	<i>Whyalla</i> Lights
		TASMAN SEA
175/2012	Aus4601	<i>Tasman Basin</i> Light buoy withdrawn
		TASMANIA
1291/2011	Aus171-173-796	<i>Adventure Bay to Pitt Water</i> Scientific instruments
1062/2012	Aus487-798-800	<i>Cape Barren Island</i> Scientific instruments
233/2013	Aus169-766	<i>Cape Sonnerat</i> Wreck
1292/2011	Aus179-800	<i>Flinders Island</i> Light unreliable
576/2012	Aus171-796	<i>Frederick Henry Bay</i> Scientific instruments
91/2010	Aus169	<i>Georges Bay</i> Wreck
277/2013	Aus173	<i>Hawkers Point</i> Pipeline
179/2013	Aus171-172	<i>Hobart</i> Wreck
527/2012	Aus168	<i>Launceston</i> Pile driving
276/2013	Aus177	<i>Macquarie Harbour</i> Marine farm
122/2013	Aus170-766-797	<i>Maria Island</i> Scientific instruments
526/2012	Aus171-796	<i>River Derwent</i> Scientific instrument
364/2013	Aus168	<i>River Tamar</i> Light beacon destroyed
662/2013	Aus790	<i>Stanley</i> Beacon destroyed
130/2012	Aus178	<i>Wynyard</i> Harbour works
		TIMOR SEA
223/2009	Aus312-4721-AX0312F-4721F-AU311126	<i>Sahul Banks</i> Navaid; racon non operational
520/2013	Aus314-4060-4603-4721-4722-AX00314U-04721U-04722U	Obstruction
		VICTORIA
131/2012	Aus801	<i>Anderson Inlet</i> Shoaling

738(T)/2013 AUSTRALIA - TEMPORARY AND PRELIMINARY NOTICES (continued)

<i>Notice</i>	<i>Charts affected</i>	<i>Locality and Subject</i>
579/2012	Aus182	<i>Barry Beach</i> Shoaling
1291/2010	Aus357-AU439146	<i>Ninety Mile Beach</i> Obstructions
275/2013	Aus349-787	<i>Otway Basin</i> Pipeline
132/2012	Aus181-357	<i>Port Albert</i> Light unlit
796/2007	Aus143-158	<i>Port Phillip</i> Obstruction
942/2010	Aus153-157	Geelong-Depth information
723/2011	Aus144-158	Great Ship Channel-Shoaling
1346/2011	Aus144-158	South Channel-Exclusion zones
76/2012	Aus143-158	Scientific instruments
365/2012	Aus143-144-158	Point Nepean-Wreck
772/2012	Aus143-155	Werribee South-Harbour works
1063/2012	Aus144-158	South Channel-Shoaling
74/2013	Aus154	River Yarra-Short Road Wharf-Harbour works
75/2013	Aus154	Appleton Dock-Harbour works
319/2013	Aus143-155	Mordialloc-Shoaling
439/2013	Aus154	Port Melbourne-River Yarra-Harbour works
532/2013	Aus155	St Kilda-Harbour works
572/2013	Aus154	River Yarra-Yarraville-Harbour works
663/2013	Aus154	Williamstown-Harbour works
731/2013	Aus143-154-155	Port Melbourne Channel-Light beacons to be established; light buoys to be withdrawn
732/2013	Aus154	River Yarra-Victoria Dock-Harbour works
514/2008	Aus150-151	<i>Western Port</i> Phillip Island-Shoaling northwards
620/2013	Aus151-152	Rutherford Inlet-Mooring piles
WESTERN AUSTRALIA		
1108/2012	Aus109	<i>Albany</i> Harbour works
116/2013	Aus64-328-743	<i>Ashburton Road to Moresby Shoals</i> Scientific instruments
776/2011	Aus327-328-742	<i>Barrow Island</i> Pipeline infrastructure
260/2012	Aus327-328-742	Pipeline
422/2013	Aus62-66	Scientific instrument
424/2013	Aus62-66-742-743	Scientific instruments
425/2013	Aus62-67-742	Anchorage
481/2013	Aus328-4723-AX04723U	Drill rig westwards
523/2013	Aus62-66-327-328-742-743	Harbour works
565/2013	Aus327-4722-4723-AX04722U-04723U	Seismic survey northeastwards
568/2013	Aus327-328-742	Rock dumping
612/2013	Aus328-4723-AX04723U	Drill rig northwestwards
725/2013	Aus327-328-742-743	Shoaling
726/2013	Aus328-4723-AX04723U	Drill rig northwestwards
1216/2012	Aus50-51	<i>Broome</i> Scientific instrument

738(T)/2013 AUSTRALIA - TEMPORARY AND PRELIMINARY NOTICES (continued)

<i>Notice</i>	<i>Charts affected</i>	<i>Locality and Subject</i>
64/2013	Aus319-320-AX00319U	<i>Browse Island</i> Light buoys northwestwards
563/2013	Aus319-320-322-4721-4722-AX00319U-00322U-04721U-04722U	Seismic survey
656/2013	Aus319-322-4721-4722-AX00319U-00322U-04721U-04722U	Drill rig northwestwards
228/2013	Aus115	<i>Bunbury</i> Shoaling
111/2013	Aus55-56	<i>Cape Lambert</i> Light beacons to be established
1006/2012	Aus315-318-AX00315U	<i>Cape Londonderry</i> Scientific instruments northeastwards
1160/2012	Aus111-114-117-AX00117T	<i>Cockburn Sound</i> Scientific instruments
278/2011	Aus755-AX0755E-66002	<i>Comet Bay</i> Scientific instrument
127/2012	Aus57-58	<i>Dampier</i> Obstructions
661/2012	Aus59	King Bay-Light beacon damaged
1291/2012	Aus58-59-60	Depth information
221/2013	Aus58-59	Light beacons removed
271/2013	Aus57-741-742	Obstruction
564/2013	Aus59	Light buoys
629/2010	Aus327	<i>Dampier Archipelago</i> Scientific instruments northwestwards
171/2013	Aus327-741-4722-4723-AX04722U-04723U	Offshore infrastructure northwestwards
658/2013	Aus327	Scientific instruments northwestwards
489/2013	Aus110-118-AX00110S-00118S	<i>Emu Point</i> Light established
418/2012	Aus119	<i>Esperance</i> Depth information
72/2013	Aus72	<i>Exmouth Boat Harbour</i> Harbour works
1107/2012	Aus116	<i>Flinders Bay</i> Harbour works
524/2012	Aus113	<i>Fremantle</i> Harbour works
1057/2012	Aus113	Depth information
1105/2012	Aus112-AX63112	Light beacon
435/2013	Aus117-754-AXA0754S-00117T-00754S	<i>Garden Island</i> Light beacon northeastwards
518/2009	Aus334-335-755-756-AX0334E-0755E-AU434115	<i>Geographe Bay</i> Scientific instrument

738(T)/2013 AUSTRALIA - TEMPORARY AND PRELIMINARY NOTICES (continued)

<i>Notice</i>	<i>Charts affected</i>	<i>Locality and Subject</i>
433/2013	Aus81	<i>Geraldton</i> Depth information
941/2011	Aus327-741	<i>Glomar Shoal</i> Scientific instruments westwards
616/2013	Aus110-118-AX00110S-00118S	<i>King George Sound</i> Scientific instruments
474/2012	Aus115	<i>Koombana Bay</i> Scientific Instrument
1106/2012	Aus114-117-AX00117T	<i>Kwinana</i> Mooring buoy
657/2013	Aus58-59	<i>Mermaid Sound</i> Scientific instruments
1294/2012 356/2013 358/2013	Aus328-4723-AX04723U Aus327-4723-AX04723U Aus328-4723-AX04723U	<i>Montebello Islands</i> Drill rig northwestwards Drill rig northwards Drill rig northwestwards
314/2013	Aus328	<i>Montebello Islands northwestwards</i> Seabed infrastructure
613/2013	Aus61-62-63-66-67-742-743	<i>Montebello Islands to Barrow Island</i> Lit mooring buoys
524/2010	Aus112-116-117-334-754-755- AX0334E-0754E-0755E-63112-66002- 70117-AU432115-433115	<i>Mullaloo to Warnbro Sound</i> Scientific instruments
1056/2012 527/2013 570/2013 661/2013	Aus329-4723-4725-AX04723U Aus328-329-744 Aus328-329-744 Aus328-329-744-745-4723-4725- AX04723U	<i>North West Cape</i> Drill rig southwestwards Pipeline northwards Drill rig northwards Light altered
472/2012	Aus743	<i>Passage Islands</i> Obstructions
316/2013	Aus334-754-AXA0754S-00334S- 00754S	<i>Perth</i> Scientific instruments westwards
486/2013	Aus84	<i>Port Gregory</i> Shoaling
478/2013 609/2013 723/2013	Aus54 Aus54 Aus52-54	<i>Port Hedland</i> Lights Lights established Depth information
713/2012	Aus327	<i>Rankin Bank</i> Scientific instrument northeastwards
608/2013	Aus326-4722-AX04722U	<i>Rowley Shoals</i> Seismic survey westwards

738(T)/2013 AUSTRALIA - TEMPORARY AND PRELIMINARY NOTICES (continued)

<i>Notice</i>	<i>Charts affected</i>	<i>Locality and Subject</i>
353/2013	Aus322-4722-AX00322U-04722U	<i>Scott Reef</i> Drill rig
1053/2012	Aus322-AX00322U	<i>Seringapatam Reef</i> Scientific instrument
615/2013	Aus328-744-4060-4070-4708-4723-4725-AX04708U-04723U	<i>Serrurier Island</i> Mooring buoy off station northwards
360/2013	Aus64-328-743	<i>Thevenard Island</i> Scientific instruments
428/2013	Aus64-743	<i>Thevenard Island to Ashburton Road</i> Dredging operations; exclusion zones
524/2013	Aus64-743-744	<i>West Reef to Fly Island</i> Scientific instruments
INDIAN OCEAN		
870/2012	Aus4070-4071	<i>Sumatera</i> Scientific instruments westwards
PACIFIC OCEAN		
283/2011	Aus4602	<i>South Fiji</i> Light buoy withdrawn
351/2013	Aus399-4622	Scientific instruments
PAPUA NEW GUINEA		
514/2013	Aus507-4604-4620-4621-AX04604U-04620U-04621U	<i>Ava Point</i> Light unlit
1286/2011	Aus399-683-4622	<i>Bougainville Island</i> Lights unlit
66/2011 609/2012	Aus379 Aus379	<i>Caution Bay</i> Harbour works Navais to be established
166/2013	Aus388-4622	<i>Condor Point</i> Light unlit
165/2013	Aus520-4620-4621-AX04620U-04621U	<i>Daia Point</i> Light unlit
473/2013	Aus392-393-543-4060-4604-4622-AX04604U	<i>Djaul Island</i> Light unlit
709/2011	Aus377-379-AX60377	<i>Eastern Fields</i> Reef delineation
561/2013	Aus378-4620-AX04620U	<i>Gulf of Papua</i> Drill rig
1285/2012	Aus388	<i>Karkar Island</i> Light beacon established

738(T)/2013 AUSTRALIA - TEMPORARY AND PRELIMINARY NOTICES *(continued)*

<i>Notice</i>	<i>Charts affected</i>	<i>Locality and Subject</i>
904/2012	Aus643	<i>Lae</i> Dredging operations
164/2013	Aus628	<i>Nuakata Passage</i> Light beacon destroyed
404/2008	Aus379-505-4620	<i>Port Moresby</i> Fish aggregation device southwards
515/2013	Aus519-520	<i>Veale Reef</i> Light unlit

HYDROGRAPHIC REPORTS

<i>Locality</i>	<i>Report</i>	<i>Ship/Authority</i>	<i>Observer</i>
EAST TIMOR- Hera	Infrastructure; nav aids		M Ismail Ali

NAVIGATION WARNINGS

The following radio messages have been received during the period to 11 July 2013. Signal copies of these messages may be destroyed. It is recommended that the reprint of Navigational Warnings should be kept in a file or a book divided into areas. Cancellation should be made on receipt of signals and reprints.

Rigs on location other than those listed in the latest Section III summary are the subject of Radio Navigational Warnings. Rigs in transit will not be the subject of Warnings.

AUSCOAST WARNING

- 175 Cancelled.
- 176 Five yellow buoys 6 metres in height with continuous flashing white lights established in position 21° 29'.25 S 113° 59'.51 E. 2M clearance requested.
- 177 Cancelled.
- 178 Drill rig *Atwood Osprey* in position 20° 27'.60 S 114° 50'.52 E. 2.5M clearance requested.

NAVAREA X WARNINGS

- 036 Cancelled.
- 037 AUSREP transitions to the Modernised Australian Ship Tracking and Reporting System (MASTREP). RCC Australia will no longer accept sail plans, deviation reports or final reports. Position reports will continue to be obtained from the vessels Automatic Identification System (AIS) operated in accordance with Regulation 19.2.4, Chapter V Solas. All other Australian mandatory reporting requirements remain in place. MASTREP is a passive reporting system and no positive SAR watch is maintained. Further information can be found in the MASTREP and Australian Mandatory Reporting Guide Edition 2013, available at www.amsa.gov.au, Australian Marine Notice 10/2013 or contact RCC Australia between 2200-0800UTC at +61 (0) 2 6230 6880.
- 038 Cancelled.
- 039 Cancelled.

Navigational warnings in force as at 110001UTC JUL 13.**Auscoast****2012** 318**2013** 024 028 075 091 096 098 099 132 134 135 145 154 157 158 163 168 172 174 176 178**Navarea X****2013** 037**Summary of mobile drilling rigs as at 110001UTC JUL 13.**

<i>Name</i>	<i>Position</i>
Jack Bates	13° 24'.59 S 122° 59'.02 E
Transocean Legend	13° 44'.28 S 122° 20'.13 E
EnSCO 109	20° 00'.38 S 115° 38'.29 E
Atwood Falcon	20° 04'.23 S 115° 11'.00 E
Atwood Osprey	20° 27'.60 S 114° 50'.52 E
Ocean America	20° 45'.41 S 114° 44'.00 E
Deepwater Frontier	19° 47'.59 S 114° 38'.93 E
Nan Hai 6	21° 31'.40 S 114° 07'.50 E
Noble Clyde Boudreaux	22° 05'.20 S 113° 10'.85 E
Atwood Eagle	20° 01'.80 S 115° 12'.05 E

NAVAREA XIV WARNINGS

- 047 Cancelled.
- 048 Cancelled.
- 049 Cancelled.
- 050 Cancelled.
- 051 Cancelled.
- 052 Cancelled.
- 053 Cancelled.

Navarea XIV warnings in force as at 110001UTC JUL 13.**2012** 076**2013** Nil

3. EPIRBs working on a frequency of 406MHz generally work well in the area. Antarctic and Sub Antarctic waters within the Australian Search and Rescue Region are covered by the Modernised Australian Ship Tracking and Reporting System (MASTREP). Mariners are strongly urged to avail themselves of MASTREP (see Ch.10 – MASTREP).

CHAPTER 10) Ship Reporting Systems

10.1 The Modernised Australian Ship Tracking and Reporting System

1. MASTREP is a Ship Reporting System designed to contribute to safety of life at sea and is operated by the Australian Maritime Safety Authority (AMSA) through the Australian Rescue Coordination Centre (RCC Australia) in Canberra. Participation in MASTREP is mandatory for certain vessels but others are encouraged to participate.
2. In 2009 work commenced on identifying AMSA and Australia's future vessel tracking and reporting needs while considering the IMO published mandates of ship reporting requirements and the need for reduced reporting obligations on vessels. This was the catalyst for the design and subsequent development of MASTREP, officially launched on 1 July 2013.
3. The MASTREP system allows Australia to meet its obligations under Chapter 5 of the Annex to the SAR Convention as it relates to Ship Reporting Systems.
4. MASTREP, as prescribed in Marine Order 63 (MASTREP) 2013, is used to track the location of vessels. Under this system:
 - positional reporting for vessels is sourced from the vessel's Automatic Identification System (AIS)
 - communications with vessels continue to be available through Inmarsat, HF, satellite telephony and other means
 - Special Reports are required to support AMSA's role in shipping oversight and incident reporting management.
5. MASTREP provides positional data on vessels transiting Australia's region via AIS technology which ensures that only the closest vessels are requested to assist in a SAR incident, reducing the need for vessels to steam long distances from their intended voyage plan. The Search and Rescue Officers conducting such operations in the Australian region routinely use this facet of MASTREP. Given the expansiveness of Australia's

Search and Rescue Region, merchantmen are often the only resources available that can quickly respond to an incident.

10.1.1 Concept of Operations

1. MASTREP uses Position Reports, which must be transmitted by AIS in accordance with the International Convention for the Safety of Life at Sea (SOLAS), Chapter 5, Regulation 19.2.4. Position Reports must transmit the following information:
 - a. identity
 - b. type
 - c. position
 - d. course
 - e. speed
 - f. navigational status
 - g. safety related information
2. Position reporting is automated and the data is fed in to the system using AIS. Positional data is usually updated at time intervals between five minutes and five hours depending on the location and source. There is **no requirement** in MASTREP to transmit Sail Plans (SP), Deviation Reports (DR) or Final Reports (FR).
3. **No positive SAR watch is maintained in MASTREP.** MASTREP is a passive ship reporting system and does not involve shore to vessel communications. **ALL DISTRESS MESSAGES SHOULD BE SENT DIRECTLY TO RCC AUSTRALIA WHILE IN THE MASTREP AREA.** Similarly, any vessel copying an SOS, MAYDAY or DSC Alert from a distressed vessel, or otherwise becoming aware that a distress incident has occurred, should contact RCC AUSTRALIA. See Communications with RCC Australia, below.
4. The Master of a vessel must report any malfunction of the vessel's AIS equipment to RCC Australia in accordance with Section 186 of the *Navigation Act 2012*.

10.1.2 Participation

1. The Commonwealth of Australia *Navigation Act 2012* and Marine Orders Part 63 makes the provision of Position Reports **mandatory** for certain vessels. The following vessels **must** report to MASTREP:
 - foreign vessels from the arrival at its first port in Australia until its departure from its final port in Australia; and
 - all regulated Australian vessels whilst in the MASTREP area.

10.1.3 Voluntary Participation

1. Vessels participating in MASTREP transmit positional data to RCC Australia. This enables vessels in the vicinity of search and rescue incidents to be determined. To assist AMSA in achieving its purpose, Masters are strongly encouraged to report to MASTREP voluntarily even where it is not mandated. Such participation will enhance the safety of reporting vessels and that of others operating in the Australian SRR.
2. Domestic commercial vessels fitted with Global Maritime Distress and Safety System (GMDSS) and AIS technology are also encouraged to participate in the system.

10.1.4 Communications with RCC Australia

1. The primary means of communication with MASTREP are:
 - **Inmarsat C:** Messages sent to MASTREP using special access code (SAC 1243) via the Perth LES (Pacific 212 or Indian 312 Ocean Region satellites) will be reverse charged to RCC Australia.
 - **HF DSC:** Messages sent via the AMSA HF DSC network will be free of charge. Initial contact through the AMSA HF DSC station is made by using a DSC safety priority call to MMSI 005030001. The message can then be passed on an appropriate RT frequency. All reports sent by voice should include the mandatory format fields including the identifying letter.

- If Inmarsat C reports are not sent using SAC 1243 via 212 or 312 it is likely that the message will not be received by RCC Australia and charges will apply to the vessel.
2. If for any reason communications are not possible via Inmarsat C or via the AMSA HF DSC station, the required information must be passed by alternative means to RCC Australia using one of the following:
 - Other Inmarsat phone/fax services: Vessels will be charged for messages sent to RCC Australia using Inmarsat systems other than Inmarsat C.
 - Other (non Inmarsat) satellite phone/fax service: A reverse charge telephone call or facsimile may be used to pass reports when in port.
 3. Further information or advice on MASTREP and copies of MASTREP instructions are available free of charge from:

RCC Australia- Maritime Telephone:	+61 (0)2 6230 6811 or free call 1800 641 792 (within Australia)
RCC Australia Fax:	+61 (0)2 6230 6868 or free call 1800 622 153 (within Australia)
RCC Australia - email:	rccaus@amsa.gov.au
Website:	www.amsa.gov.au

10.2 The AMVER Organization

1. The Automated Mutual Assistance Vessel Rescue System (AMVER) is a computer based, voluntary global ship reporting system sponsored by the United States Coast Guard. Appropriate ship position information is made available to recognized SAR agencies of any nation to aid the assistance of persons in distress at sea.
2. Masters of vessels outside the MASTREP area are encouraged to make reports to AMVER by email or transmit Inmarsat C messages through TELENOR using Aussaguel LES (321) when in the Indian Ocean Region and Santa Paula LES (201) when in the Pacific Ocean Region to ensure the reports are received by AMVER. AMVER communications stations and message formats are described in

Admiralty List of Radio Signals Volume 1 (ALRS Vol 1). See website below for further information.

Website:	www.amver.com
email:	amvermsg@amver.org

10.3 The Great Barrier Reef and Torres Strait Vessel Traffic Service - REEFVTS

1. The Great Barrier Reef and Torres Strait Ship Reporting System (REEFREP) was established as a mandatory ship reporting system under the International Convention for the Safety of Life at Sea (SOLAS Chapter V Regulation 11). REEFREP was formally adopted by the IMO's Maritime Safety Committee in Resolution MSC.52(66), and later amended by Resolutions MSC.161(78) and MSC.315(88).
2. REEFREP is an integral component of the Great Barrier Reef and Torres Strait Vessel Traffic Service (REEFVTS). Within the REEFVTS area ships identify themselves and report their intended passage through the region. This information, together with the monitoring and surveillance systems used by REEFVTS, assists with the proactive monitoring of a ship's transit through the Great Barrier Reef and Torres Strait.
3. The purpose of REEFVTS is to enhance navigational safety in Torres Strait and the Inner Route of the Great Barrier Reef thereby minimising the risk of a maritime accident and consequential pollution and major damage to the marine environment. REEFVTS also provides the ability to respond more quickly in the event of any safety or pollution incident.

10.3.1 System Overview

1. REEFVTS is manned and operated 24 hours a day by personnel operating from the REEFVTS Centre, radio call identity "REEFVTS", situated in Townsville.
2. REEFVTS provides both an information service and navigational assistance services in the REEFVTS area. In summary, the services delivered include:
 - Ship Traffic Information (STI) - Ship encounters are predicted and this information is sent to individual ships

as STI, usually through Inmarsat C messaging.

- Maritime Safety Information (MSI) - Information that is relevant to the ships location and intended movement is provided.
 - Navigational Assistance - REEFVTS may contact that ship, if there is information available to REEFVTS which may help onboard decision making such as where the ship is heading into shallow water or deviating from a planned route.
3. REEFVTS may not know about all the hazards in the area. If a ship encounters any hazard that is not already included in Maritime Safety Information (e.g. a faulty navigational aid) they should advise REEFVTS so they may pass that information on to other mariners.

10.3.2 Mandatory Reporting Requirement

1. The following categories of ships are required to report to REEFVTS, irrespective of whether they are on overseas, interstate or intrastate voyages:
 - a) all ships of 50 metres or greater overall length
 - b) all oil tankers, liquefied gas carriers, chemical tankers or ships coming within the INF Code, regardless of length
 - c) ships engaged in towing or pushing where the length of the tow exceeds 150 metres, or a vessel described in a) or b) is involved.
2. Other vessels transiting the REEFVTS area are encouraged to report on a voluntary basis.
3. Mariners are referred to AMSA *Marine Orders Part 56* for details of their obligations under REEFREP. This is available on the AMSA website.

Website:	www.amsa.gov.au
----------	--

10.3.3 Communicating with REEFVTS

1. Communication with REEFVTS is in English. The IMO's Standard Marine Communication Phrases are to be used.
2. The means of communication with REEFVTS are:
Inmarsat C
3. REEFVTS will pay the cost of messages sent by Inmarsat C if the ship uses the special access code (SAC) 861 via POR LES 212.
4. When setting up the Inmarsat C address book, select either: ASCII or 7-bit or IA5 for data presentation or character code.

VHF Radio

5. A VHF radio network is available along the Queensland coast and Torres Strait to communicate with REEFVTS. REEFVTS keeps a listening watch at all times on the VHF working Channels 11 and 14 as shown in diagram on next page.

Other Communications

6. If for any reason a ship cannot communicate via Inmarsat C or the VHF working channel, the ship must send the required information to REEFVTS in another way. The ship can use one of the following:

Telephone:	+61 7 4726 3428 1300 721 293
Fax:	+61 7 4721 0633
email:	reefvts@vtm.qld.gov.au

7. If a ship's radio equipment fails and the ship cannot send the required reports to REEFVTS, the failure must be recorded in the ship's radio log book or the official log book.

10.3.4 REEFVTS Area

1. Nautical paper charts Aus 4620, 4621, 4635 and 490 provide details of the REEFVTS Area, categories of ships required to report, mandatory reporting positions and VHF Working Channels (see diagram p167).

10.4 REEFVTS Reports

1. The Master is responsible for ensuring that the information required by REEFVTS is reported to the VTS Centre. The following reports must be provided to REEFVTS:
 - Pre-Entry Position Report
 - Entry Report
 - Route Plan Report
 - Route Deviation Report
 - Intermediate Position Reports
 - Defect Reports
 - Final Report.
2. Send all reports to REEFVTS by Inmarsat C or call on the VHF working channels. Mariners are encouraged to send reports in IMO format.
3. A summary of the reports is listed below and the REEFVTS User Guide should be consulted for a more detailed description. Copies of the REEFVTS User Guide are available online, hardcopies from AMSA or can be requested via email.

Websites:	www.amsa.gov.au www.msq.qld.gov.au
email:	reefvts@amsa.gov.au

10.4.1 Pre-Entry Position Report

1. A Pre-Entry Position Report is required at least 2 hours prior to entering the REEFVTS area or departing from a port within the REEFVTS area.
2. The purpose of a pre-entry report is to advise REEFVTS of the ship intentions (e.g. entry to the REEFVTS area) and take the necessary steps to ensure that the ship's Inmarsat C terminal is operational when the vessel enters the region. The vessel's Inmarsat C terminal is to be logged into the Pacific Ocean Region.
3. The following message fields are required (see table 1 on p.168 for format):

Mandatory fields:	A, B, C, H, K, M
-------------------	------------------

10.4.2 Entry Report

1. An Entry Report is required when a ship enters the REEFVTS area or departs from a port within the REEFVTS area. Masters are encouraged to provide a route plan with the Entry Report. However, it is understood that this may not be possible until a pilot boards.
2. The following message fields are required (see table 1 on p.168 for format):

Mandatory fields:	A, B, C, F, J, K, L, O, P, Q, U, X
-------------------	------------------------------------

10.4.3 Route Plan Report

1. If a route plan is not included in the entry report, then it must be provided within 1 hour of entering the REEFVTS area or departing from a port within the REEFVTS area. More information on standard routes and associated chartlets for the Inner Route and Great North East Channel are detailed in the REEFVTS User Guide.
2. The following message fields are required (see table 1 on p.169 for format):

Mandatory fields:	A, B, C, F, K, L
-------------------	------------------

3. Route plan details are to be provided by one or more of the following methods:

Standard Route Plan

4. These have been developed to enable communication of the intended routes based on the name of the route (e.g. Inner Route, Great North East Channel), predefined route by communicating the ship's draft (e.g. deep, moderate or shallow), and the name of any alternative legs intended to be taken that vary from the standard route.

Mandatory Reporting Points

5. Route plans can be provided by reporting at Mandatory Reporting Points as the vessel progresses through the REEFVTS area. When a vessel reports, the next two Mandatory Reporting Points need to be advised. Where there are two or more routes between Mandatory Reporting Points, the planned (e.g. Alpha North to Hannibal via Varzin Passage).

Waypoints

6. The use of non-standard routes is accommodated by providing a list of the planned waypoints for

the transit - either the latitude or longitude of the planned waypoints, the Mandatory Reporting Point names, or a combination of both.

10.4.4 Intermediate Position Reports

1. Where REEFVTS advises that the ship's position is being tracked by sensors then Intermediate Position Reports at the Mandatory Reporting Points are not required.
2. If the ship's position is not being tracked by sensors, then a brief position report must be given as advised by REEFVTS.
3. Note: Make sure that the ship's Inmarsat C terminal is logged into the Pacific Ocean Region (POR).
4. The following message fields are required (see table 1 on p.168 for format):

Mandatory fields:	A, B, C, F
-------------------	------------

10.4.5 Route Deviation Report

1. If the ship deviates from the Passage Plan which was sent to REEFVTS, this information should be reported to REEFVTS before the deviation is made. However, in situations where a deviation is made without much warning, a report should be sent to REEFVTS as soon as possible.
2. A new route plan report is to be sent to REEFVTS.

10.4.6 Defect Report

1. Reports must be provided without delay should a ship suffer damage, failure or breakdown which affects the safety of the ship.
2. The following message fields are required (see table 1 on p.168 for format):

Mandatory fields:	A, B, C, F
Additional fields: (if appropriate)	Q, R, X

3. Reports of pollution or cargo lost overboard must also be reported to REEFVTS without delay using fields Q and R, or special reports as defined by the IMO for incidents involving Dangerous Goods (DG), Harmful Substances or Marine Pollutants (MP). See 10.5 for further details.

10.4.7 Final Report

1. A final report is required when exiting the REEFVTS area, or when arriving at a port within the REEFVTS area.
2. The following message fields are required (see table 1 on p.168 for format):

Mandatory fields:	A, B, C
-------------------	---------

10.4.8 Interaction between REEFVTS and MASTREP

1. REEFVTS automatically forwards regular position reports to RCC Australia.
2. When a vessel departs a port within the REEFVTS AREA and intends to report to MASTREP when it exits the REEFVTS Area, the vessel should ensure that Position Reports are transmitted by AIS in accordance with the International Convention for the Safety of Life at Sea (SOLAS), Chapter 5, Regulation 19.2.4.
3. When a vessel departs the REEFVTS Area and is reporting to MASTREP, the Master must report any malfunction of the vessel's AIS equipment to RCC Australia in accordance with Section 186 of the *Navigation Act 2012*.
4. Further information about reporting to MASTREP is provided in the MASTREP and Australian Mandatory Reporting Guide. A copy of this Guide is available from AMSA offices or the AMSA website.

Website:	www.amsa.gov.au
----------	--

10.5 Special Reports to MASTREP and REEFVTS

1. A vessel must advise MASTREP (RCC Australia) or REEFVTS (REEFVTS Centre) as appropriate when damage or defects occur which affect its operation or seaworthiness, or when a discharge of dangerous goods, harmful substances or marine pollutants is about to or is likely to occur. The following specific reports are to be used.

10.5.1 Dangerous Goods Reports

1. When an incident occurs involving the loss or likely loss overboard of packaged dangerous goods, including those in freight containers, portable

tanks, rail and road vehicles and shipborne barges into the sea, a Dangerous Goods Report (DG) is to be sent. Particulars not immediately available should be reported in a supplementary message. The primary report should contain message format fields:

Mandatory fields:	A, B, C, M, Q, R, S, T, U
Additional fields:	P, Q

2. If the condition of the ship is such that there is a danger of further loss, fields P and Q should be reported. See table 2 p.168 - Dangerous Good Reports for further details.

10.5.2 Harmful Substances Reports

1. When an incident takes place involving the discharge or probable discharge of oil (Annex I of MARPOL) or noxious liquids in bulk (Annex II of MARPOL), a Harmful Substances Report (HS) is to be sent. Particulars not immediately available should be reported in a supplementary message. The primary report should contain message format fields.

Mandatory fields:	A, B, C, E, L, M, N, Q, R, S, T, U, X
-------------------	---------------------------------------

2. The Master of a ship engaged in an operation to render assistance or undertake salvage work should report, as far as practicable, fields:

Mandatory fields:	A, B, C, E, F, L, M, N, P, Q, R, S, T, U, X
-------------------	---

3. See table 3 on p.169 - Harmful Substance Reports.

10.5.3 Marine Pollutants Reports

1. In the case of the loss or likely loss overboard of harmful substances in packaged form, including those in freight containers, portable tanks, road and rail vehicles and shipborne barges, identified in the International Maritime Dangerous Goods Code as marine pollutants (Annex III to MARPOL) a Marine Pollutants Report (MP) is to be sent. In the case of actual discharges the primary report should include message format fields:

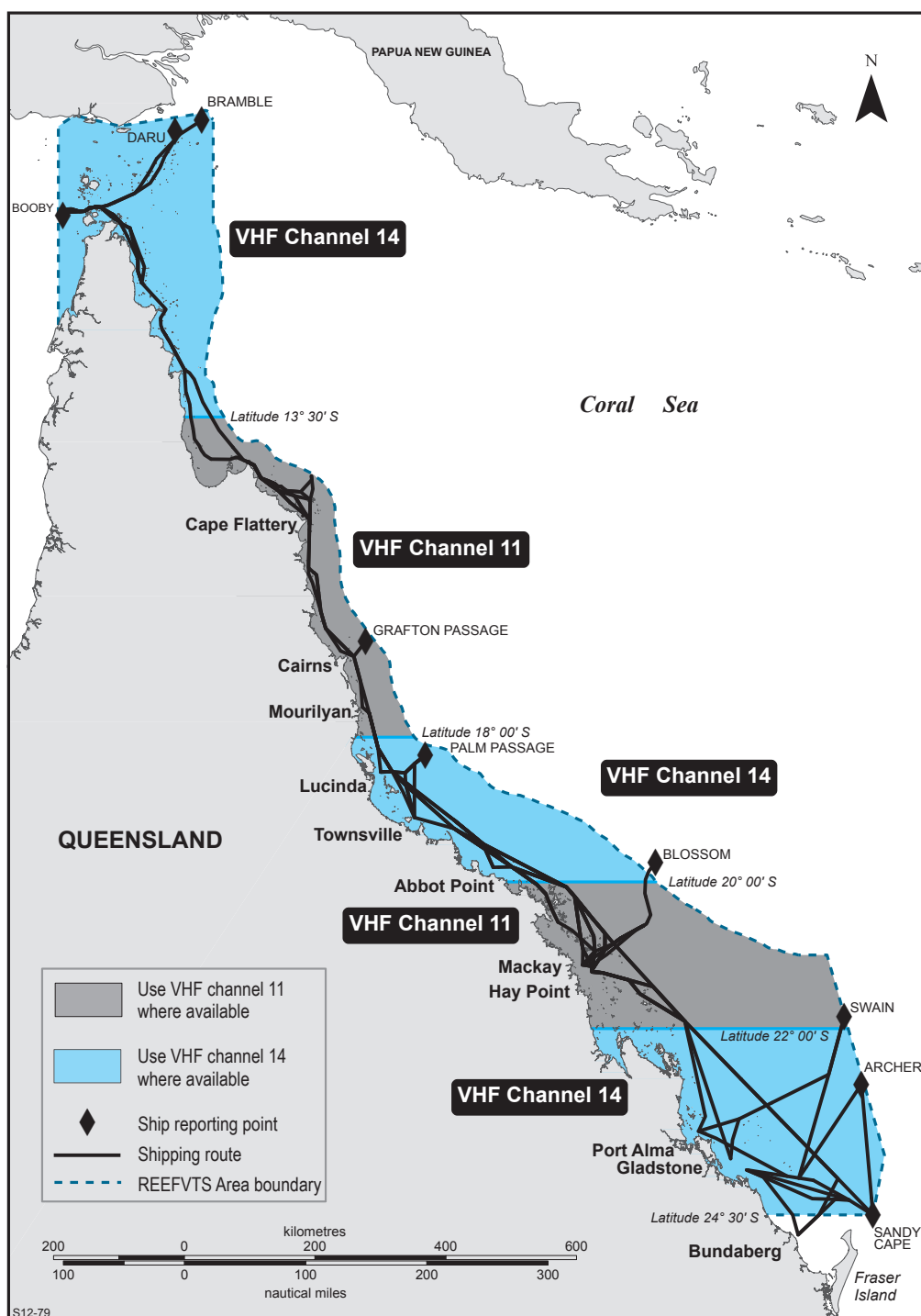
Mandatory fields:	A, B, C, M, Q, R, S, T, U, X
-------------------	------------------------------

2. In the case of a probable discharge field P should also be included.

3. The Master of a ship engaged in an operation to render assistance or undertake salvage work should report, as far as practicable, fields:

Mandatory fields:	A, B, C, M, P, Q, R, S, T, U, X.
-------------------	----------------------------------

4. See table 4 on p.170 - Marine Pollutants Reports.



REEFVTS VHF Channel overview

Source: Maritime Safety Queensland

Table 1 - REEFVTS Message fields reference codes

Line	Content	Example field text
A	Ship Name / Callsign / IMO number	A/HIBISCUS/BCBC/8502453//
B	Date/Time (UTC)	B/010200UTC//
C	Current position (name of mandatory reporting point, or lat/long)	C/BOOBY//
F	Speed (The planned Speed of the ship in knots and tenth of knots)	F/13//
H	Date, time (UTC) and point of entry to area (enter the name of the first mandatory reporting point entering the area or lat/long)	H/1036S/14144E//
J	Pilot on board - name and number	J/YES/BROWN/0012134//
K	Date, time (UTC) and point of exit from REEFVTS Area	K/041300UTC/SANDY CAPE//
L	Route Information (Usually a Route Plan. If not, the name of the next two Mandatory Reporting Points, or the course if the ship is not tracking between Mandatory Reporting Points)	L/INNER ROUTE DEEP//, or L/ALPHA NORTH VIA VARZIN PASSAGE/ HANNIBAL//
M	Communication Methods (including Inmarsat IMN, manufacturer and model)	M/450111333/JRC/JUE-75C//
O	DRAFT (fore and aft, in metres and decimetres)	O/FORE 11.5/AFT 11.3//
P	Cargo (normal name of cargo, whether dangerous)	P/BULK CHEMICALS/DG YES//
Q	Defects and other limitations	include as required
R	Pollution/dangerous goods lost overboard	include as required
U	Ship type, length (metres) and gross tonnage	U/TANKER/180/28000
X	Additional information which would contribute to navigation safety in REEFVTS Area	include as required

Table 2 - Dangerous Goods Reports

A	Ship Name/Callsign/IMO Number
B	Date/Time of incident
C	Position
M	Coastal Radio Stations monitored/Inmarsat numbers
P	P1: Technical name(s) of goods P2: UN number(s) P3: IMO hazard class(es) P4: Names of manufacturers of goods, or consignee or consignor P5: Types of packages (portable tanks, container, vehicle etc). Include official registration marks and numbers assigned to the unit P6: Estimated quantity and likely condition of the goods
R	R1: Technical name(s) of the goods R2: UN number(s) R3: IMO hazard class(es) R4: Names of manufacturers of goods, or consignee or consignor R5: Types of packages (portable tanks, container, vehicle etc). Include official registration marks and numbers assigned to the unit R6: Estimated quantity and likely condition of the goods R7: Whether lost goods floated or sank R8: Whether loss is continuing R9: Cause of loss

Table 3 - Harmful Substance Reports

A	Ship Name / Callsign / IMO Number
B	Date /Time of incident
C	Position
E	Course
F	Speed
L	Route
M	Coastal Radio Stations monitored / Inmarsat numbers
N	Nominated daily reporting time
P	P1: Type of oil or technical name of the noxious liquid substances on board P2: UN number(s) P3: IMO pollution category (A, B, C or D), for noxious liquid substances P4: Names of manufacturers of goods, or consignee or consignor P5: Quantity
Q	Q1: Condition of the ship as relevant Q2: Ability to transfer cargo / ballast / fuel
R	R1: Type of oil or technical name of the noxious liquid substances on board R2: UN number(s) R3: IMO pollution category (A, B, C or D), for noxious liquid substances R4: Names of manufacturers of goods, or consignee or consignor R5: Quantity R6: Whether lost substances floated or sank R7: Whether loss is continuing R8: Cause of loss R9: Estimated movement of discharge or lost substances, giving current conditions if known R10: Estimate of the surface area of the spill if possible
T	Name, address, telex and telephone number of ship's owner and representative (charterer, manager and operator or their agent)
X	X1: Action being taken with regard to the discharge and the movement of the ship X2: Assistance or salvage efforts which have been requested or provided X3: The Master of an assisting or salvaging vessel should report particulars of the action undertaken or proposed

Table 4 - Marine Pollutants Reports

A	Ship Name/Callsign/ MO Number
B	Date/Time of incident
C	Position
M	Coastal Radio Stations monitored/Inmarsat numbers
P	<p>P1: Technical name(s) of goods</p> <p>P2: UN number(s)</p> <p>P3: IMO hazard class(es)</p> <p>P4: Names of manufacturers of goods, or consignee or consignor</p> <p>P5: Types of packages (portable tanks, container, vehicle etc). Include official registration marks and numbers assigned to the unit</p> <p>P6: Estimated quantity and likely condition of the goods</p>
Q	<p>Q1: Condition of the ship as relevant</p> <p>Q2: Ability to transfer cargo/ballast/fuel</p>
R	<p>R1: Technical name(s) of the goods</p> <p>R2: UN number(s)</p> <p>R3: IMO hazard class(es)</p> <p>R4: Names of manufacturers of goods, or consignee or consignor</p> <p>R5: Types of packages (portable tanks, container, vehicle etc). Include official registration marks and numbers assigned to the unit</p> <p>R6: Estimated quantity and likely condition of the goods</p> <p>R7: Whether lost goods floated or sank</p> <p>R8: Whether loss is continuing</p> <p>R9: Cause of loss</p>
T	Name, address, telex and telephone number of ship's owner and representative (charterer, manager and operator or their agent)
X	<p>X1: Action being taken with regard to the discharge and the movement of the ship</p> <p>X2: Assistance or salvage efforts which have been requested or provided</p> <p>X3: The Master of an assisting or salvaging vessel should report particulars of the action undertaken or proposed</p>

4A. THE MODERNISED AUSTRALIAN SHIP TRACKING AND REPORTING SYSTEM (MASTREP)

MASTREP (see MASTREP and Australian Mandatory Reporting Guide)

For information on REEFREP see *Notice to Mariners No 22*.

Purpose of the MASTREP system

1. MASTREP is a ship reporting system designed to contribute to safety of life at sea and is operated by the Australian Maritime Safety Authority (AMSA) through the Australian Rescue Coordination Centre (RCC Australia) in Canberra. Participation in MASTREP is mandatory for certain vessels but other vessels visiting Australia or transiting Australian waters are encouraged to participate voluntarily. For further details on RCC Australia see *Notice to Mariners No 4*.
2. MASTREP, as prescribed in Marine Order 63 (MASTREP) 2013, is used to track the location of vessels. Under this system:
 - (a) positional reporting for vessels is sourced from the vessel's Automatic Identification System (AIS);
 - (b) communications with vessels continue to be available through Inmarsat, HF, satellite telephony and other means;
 - (c) Special Reports are required to support AMSA's role in shipping oversight and incident reporting management.
3. MASTREP provides positional data on vessels transiting Australia's region via AIS technology which ensures that only the closest vessels are requested to assist in a SAR incident, reducing the need for vessels to steam long distances from their intended voyage plan. The Search and Rescue Officers conducting such operations in the Australian region routinely use this facet of MASTREP. Given the expansiveness of Australia's Search and Rescue Region (SRR), merchantmen are often the only resources available that can quickly respond to an incident.

Which vessels should report to MASTREP

4. The Commonwealth of Australia Navigation Act 2012 and Marine Orders Part 63 makes the provision of Position Reports mandatory for certain vessels. The following vessels must report to MASTREP:
 - (a) foreign vessels from the arrival at its first port in Australia until its departure from its final port in Australia; and
 - (b) all regulated Australian vessels whilst in the MASTREP area.

Voluntary participation

5. Domestic commercial vessels fitted with Global Maritime Distress and Safety System (GMDSS) and AIS technology are also encouraged to participate in the system as MASTREP assists AMSA in carrying out SAR activities.

Transmitting Mandatory Position Reports

6. MASTREP uses Position Reports, which must be transmitted by AIS in accordance with the International Convention for the Safety of Life at Sea (SOLAS), Chapter 5, Regulation 19.2.4. Position Reports must transmit the following information:
 - (a) identity
 - (b) type
 - (c) position
 - (d) course
 - (e) speed
 - (f) navigational status
 - (g) safety related information.
7. Position reporting is automated and the data is fed in to the system using AIS. Positional data is usually updated at time intervals between five minutes and five hours depending on the location and source. There is **no requirement** in MASTREP to transmit Sail Plans (SP), Deviation Reports (DR) or Final Reports (FR).

8. **No positive SAR watch is maintained in MASTREP.** MASTREP is a passive ship reporting system and does not involve shore to vessel communications. **ALL DISTRESS MESSAGES SHOULD BE SENT DIRECTLY TO RCC AUSTRALIA WHILE IN THE MASTREP AREA.** Similarly, any vessel copying an SOS, MAYDAY or DSC Alert from a distressed vessel, or otherwise becoming aware that a distress incident has occurred, should contact RCC AUSTRALIA. See Communications with RCC Australia, below.
9. The Master of a vessel must report any malfunction of the vessel's AIS equipment to RCC Australia in accordance with Section 186 of the *Navigation Act 2012*.

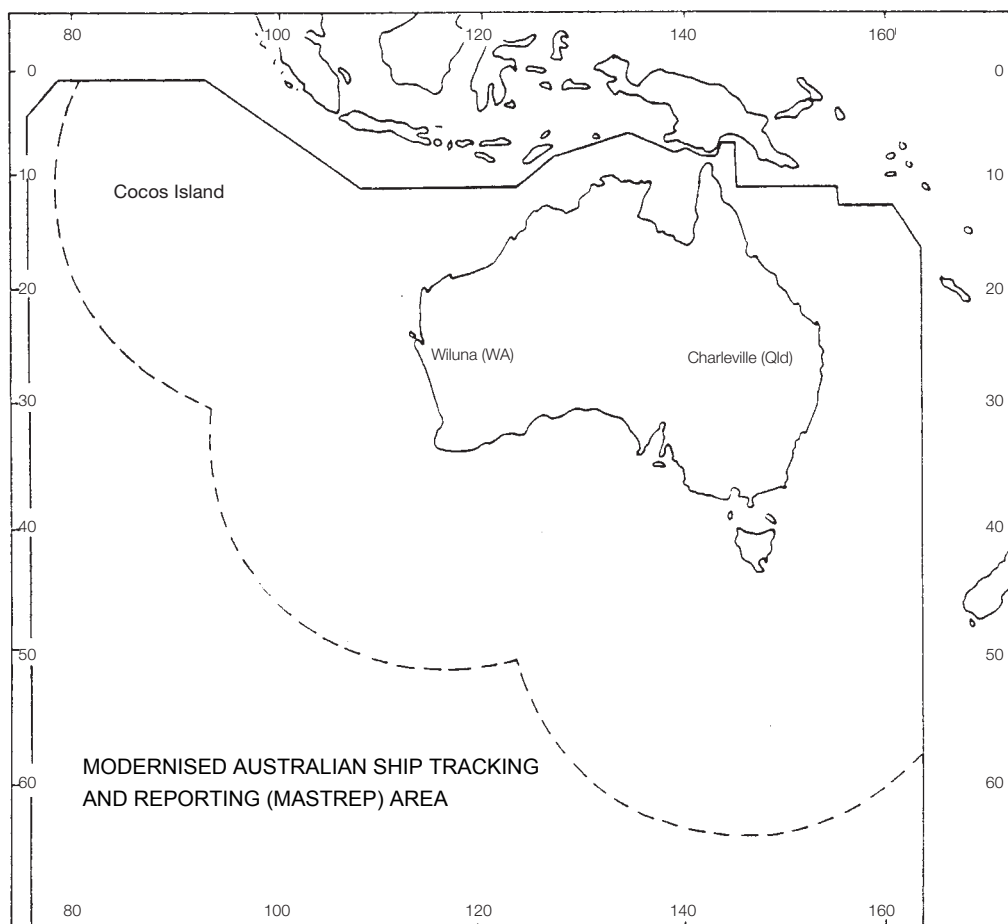
The MASTREP coverage area

10. The area of coverage for MASTREP and for the Australian Search and Rescue Region (SRR) are identical. Coordinates of this area are:

The coast of the Antarctic continent in longitude 75°00'.00E thence

6°00'.00S 75°00'.00E
 2°00'.00S 78°00'.00E
 2°00'.00S 92°00'.00E
 12°00'.00S 107°00'.00E
 12°00'.00S 123°20'.00E
 9°20'.00S 126°50'.00E
 7°00'.00S 135°00'.00E
 9°50'.00S 139°40'.00E
 9°50'.00S 141°00'.00E
 9°37'.00S 141°01'.06E
 9°08'.00S 143°53'.00E
 9°24'.00S 144°13'.00E
 12°00'.00S 144°00'.00E
 12°00'.00S 155°00'.00E
 14°00'.00S 155°00'.00E
 14°00'.00S 161°15'.00E
 17°40'.00S 163°00'.00E

Thence to the coast of the Antarctic continent in longitude 163°00'.00E.



— — Depicts approximate radius of action for Australian based long range search aircraft

Special Report types

11. Special report types include those for Dangerous Goods (DG), Harmful Substances (HS), and Marine Pollutants (MP). Special Reports should follow the guidelines for reporting as set out in *IMO Resolution A.851 (20)*, as amended by *IMO Resolution MEPC.138 (53)*. See *Admiralty List of Radio Signals NP286(4) Volume 6 2012/2013* for format of Special Reports.

Marine Incident reporting

12. All Marine Incidents are to be reported to AMSA using form 'AMSA 18' and form 'AMSA 19'. Copies of these forms can be obtained from the AMSA website www.amsa.gov.au
13. Examples of incidents include, but are not limited to, the loss, death or serious injury of a person, the loss of or damage to a vessel, equipment failure, a collision or a pollution event.
14. Reports should be made in accordance to the requirements of the *Navigation Act 2012*, *Marine Orders*, and the *Occupational Health and Safety (Maritime Industry) Act 1993*, as applicable.

Non-mandatory reporting

15. Masters wishing to send information to RCC Australia or the Maritime Assistance Service, other than that which is mandated to be reported under the relevant legislation identified in the Marine Incident Reporting section, should complete an Information Report using the standard international ship reporting format as set out *IMO Resolution A.851 (20)*.
16. Examples of non-mandatory reports include notification of navigational hazards, vessel defects or deficiencies, or other limitations which could adversely affect navigation.

REEFVTS interaction

17. Vessels transiting through the Great Barrier Reef and the Torres Strait must report to the REEFVTS. Procedures for reporting to the REEFVTS are provided in the Great Barrier Reef and Torres Strait Vessel Traffic Service (REEFVTS) User Guide available from AMSA and Maritime Safety Queensland (MSQ) offices. An electronic copy of the user manual is also located on the AMSA and MSQ websites.

Reports to other reporting systems

18. Reports to other reporting systems (AMVER, JASREP etc.) will not be forwarded by RCC Australia. Vessels are requested to pass these reports direct.
19. Masters of vessels outside the MASTREP area are encouraged to make reports to AMVER by email addressed to amvermsg@amver.org or transmit Immarsat-C message through TELENOR using Aussaguel LES (321) when in the Indian Ocean Region and Santa Paula LES (201) when in the Pacific Ocean Region to ensure the reports are received by AMVER.

Communications with RCC Australia

20. Primary Communications:
 - (a) The primary means of communication with MASTREP are:
 - i. Inmarsat C: Messages sent to MASTREP using special access code (SAC 1243) via the Perth LES (Pacific 212 or Indian 312 Ocean Region satellites) will be reverse charged to RCC Australia.
 - ii. HF DSC: Messages sent via the AMSA HF DSC network will be free of charge. Initial contact through the AMSA HF DSC station is made by using a DSC safety priority call to MMSI 005030001. The message can then be passed on an appropriate RT frequency. All reports sent by voice should include the mandatory format fields including the identifying letter.
 - (b) If Inmarsat C reports are not sent using SAC 1243 via 212 or 312 it is likely that the message will not be received by RCC Australia and charges will apply to the vessel.

21. Alternative Communications:

- (a) If for any reason communications are not possible via Inmarsat C or via the AMSA HF DSC station, the required information must be passed by alternative means to RCC Australia using one of the following:
 - i. Other Inmarsat phone/fax services: Vessels will be charged for messages sent to RCC Australia using Inmarsat systems other than Inmarsat C.
 - ii. Other (non Inmarsat) satellite phone/fax service: A reverse charge telephone call or facsimile may be used to pass reports when in port.
- (b) Contact details for RCC Australia are:
 - (i) Telephone: +61 (0)2 6230 6811 or free call 1800 641 792
 - (ii) Facsimile: +61 (0)2 6230 6868 or free call 1800 622 153
 - (iii) E-mail: rccaus@amsa.gov.au

Further information or advice on MASTREP procedures

22. Further information or advice on MASTREP is available in the MASTREP and Australian Mandatory Reporting Guide. Copies of this guide may be obtained free of charge from:
- (a) AMSA – RCC Australia
 - Telephone +61 (0)2 6230 6811 or free call 1800 641 792
 - Facsimile +61 (0)2 6230 6868 or free call 1800 622 153
 - Postal Address GPO Box 2181
Canberra ACT 2601
Australia
 - (b) Website www.amsa.gov.au
 - (c) AMSA offices in major ports

To accompany Australian Notice to Mariners 674/2013

HISTORIC WRECK

The site of an historic wreck is protected from unauthorised interference. For details see Seafarers Handbook for Australian Waters AHP 20.

Note for chart Aus 203.

To accompany Australian Notice to Mariners 681/2013

UNEXPLODED ORDNANCE (UXO)

The area is safe for surface navigation only; it is not safe for anchoring, trawling or seabed activities. For details see Australian Notice to Mariners No 12.

Note for chart Aus 262.

To accompany Australian Notice to Mariners 681/2013

UNEXPLODED ORDNANCE (UXO)

The area is safe for surface navigation only; it is not safe for anchoring, trawling or seabed activities. For details see Australian Notice to Mariners No 12.

Note for chart Aus 830.

To accompany Australian Notice to Mariners 681/2013

UNEXPLODED ORDNANCE (UXO)

The area is safe for surface navigation only; it is not safe for anchoring, trawling or seabed activities. For details see Australian Notice to Mariners No 12.

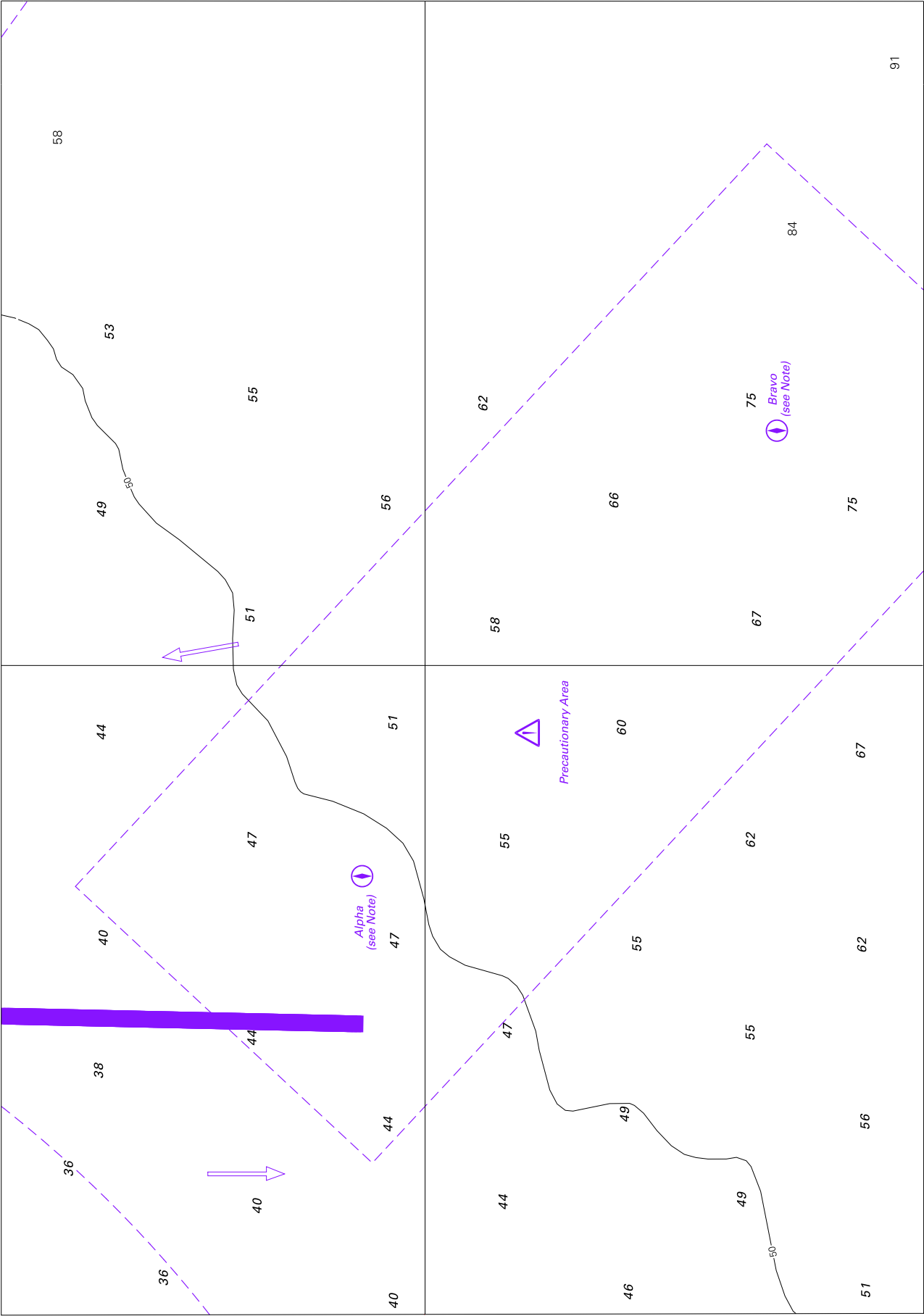
Note for chart AX 63262.

To accompany Australian Notice to Mariners 681/2013

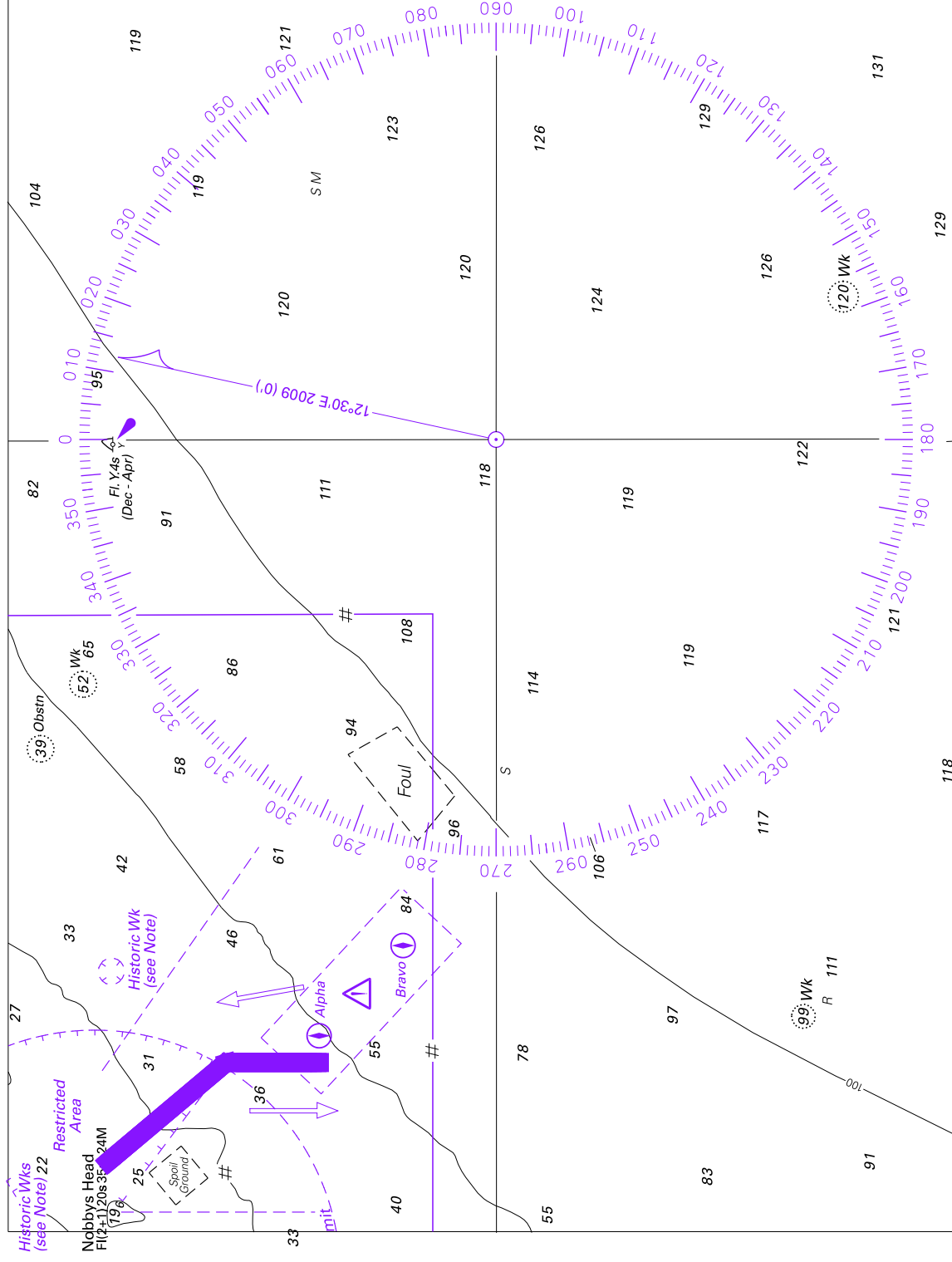
UNEXPLODED ORDNANCE (UXO)

The area is safe for surface navigation only; it is not safe for anchoring, trawling or seabed activities. For details see Australian Notice to Mariners No 12.

Note for chart AXA 0830T.



To accompany Australian Notice to Mariners 676/2013



Block for chart Aus 809

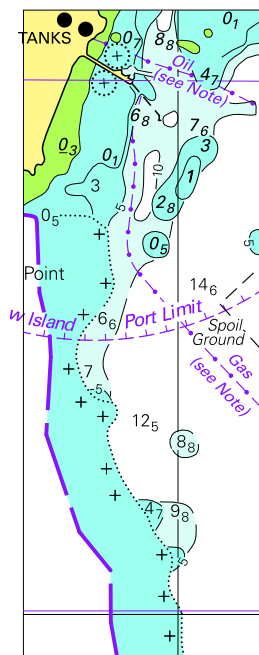
© Commonwealth of Australia 2013

(197.2 x 150.9mm)

This is a detailed nautical chart of the Barrow, Alaska area, showing the Beaufort Sea and the Chukchi Sea. The chart includes numerous islands, shoals, and reefs, such as Barrow Island, North Sandy Island, South Passage Island, and Great Sandy Island. It also shows the locations of various military exercise areas, including the 'Military Exercise Area (see Note)' and the 'UNSURVEYED' area. The chart is color-coded with green for land, blue for water, and yellow for shoals. It includes depth soundings, navigational aids, and a scale bar indicating 1-1.5kn and 1-2kn.

(144.7 x 162.0mm)

To accompany Australian Notice to Mariners 691/2013

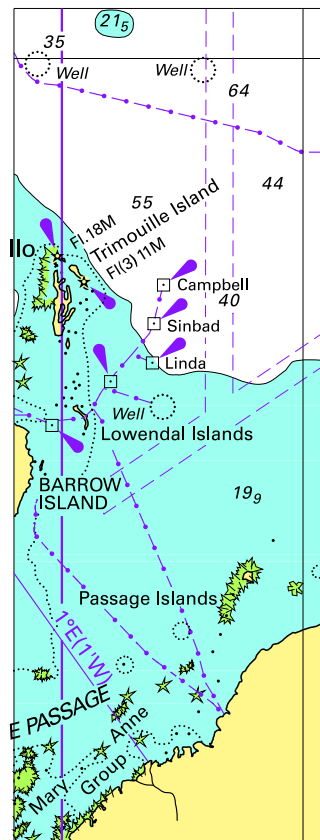


© Commonwealth of Australia 2013

Block for chart Aus 328

(31.5 x 85.8mm)

To accompany Australian Notice to Mariners 691/2013

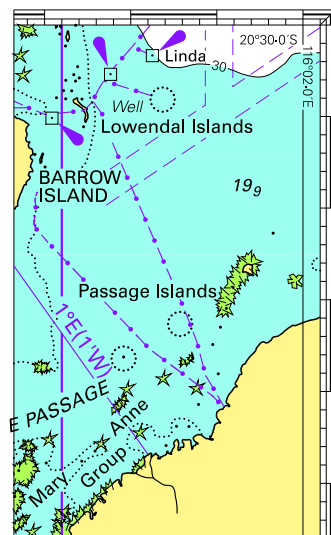


Block for chart Aus 4723

© Commonwealth of Australia 2013

(41.4 x 110.7mm)

To accompany Australian Notice to Mariners 691/2013



Block for chart Aus 4725

© Commonwealth of Australia 2013

(42.5 x 69.8mm)