



17 May 2013

Edition 10

Australian Notices to Mariners are the authority for correcting Australian Charts and Publications

AUSTRALIAN NOTICES TO MARINERS

Notices 493 – 533 

Published fortnightly by the Australian Hydrographic Service

Commodore B.K. BRACE RAN
Hydrographer of Australia

SECTIONS.

- I. **Australian Notices to Mariners, including blocks and notes.**
- II. **Hydrographic Reports.**
- III. **Navigational Warnings.**

SUPPLEMENTS.

- I. **Tracings**
- II. **Cumulative List of Australian Notices to Mariners.**
- III. **Cumulative List of Temporary and Preliminary Australian Notices to Mariners.**
- IV. **Temporary and Preliminary Notices in force.**
- V. **Amendments to Admiralty List of Lights and Fog Signals (Vol K), Radio Signals (NP 281(2), 282, 283(2), 285, 286(4)) and Sailing Directions (NP 9, 13, 14, 15, 33, 34, 35, 36, 39, 44, 51, 60, 61, 62, 100, 136).**

© Commonwealth of Australia 2013

This work is copyright. Apart from any use permitted under the Copyright Act 1968, no part may be reproduced by any process, adapted, communicated or commercially exploited without prior written permission from The Commonwealth represented by the Australian Hydrographic Service.

IMPORTANT NOTICE

This edition of Notices to Mariners includes all significant information affecting AHS products which the AHS has become aware of since the last edition. All reasonable efforts have been made to ensure the accuracy and completeness of the information, including third party information, on which these updates are based. The AHS regards third parties from which it receives information as reliable, however the AHS cannot verify all such information and errors may therefore exist. The AHS does not accept liability for errors in third party information.

GENERAL INSTRUCTIONS

The substance of these notices should be inserted on the charts affected.

Bearings are referred to the true compass and are reckoned clockwise from North; those relating to lights are given as seen by an observer from seaward. Positions quoted in permanent notices relate to the horizontal datum for the chart(s). When preliminary or temporary notices affect multiple charts, positions will be provided in relation to only one horizontal datum and that datum will be specified. When the multiple charts do not have a common horizontal datum, mariners will be required to adjust the position(s) for those charts not on the specified datum. The range quoted for a light is its nominal range. Depths are with reference to the chart datum of each chart. Heights are above mean high water springs or mean higher high water, as appropriate.

The capital letter (P) or (T) after the number of any notice denotes a preliminary or temporary notice respectively, which are contained separately at the end of the permanent notices. A star (*) adjacent to the number of a notice indicates that the notice is based on original information.

REPORTING OF DANGERS

Mariners are particularly requested to notify the AUSTRALIAN HYDROGRAPHIC SERVICE, Locked Bag 8801 Wollongong, NSW 2500 (Fax 02-4223 6599, e-mail Hydro.NTM@defence.gov.au or, alternatively by filling in and submitting the [Hydrographic Notes](#) forms located on the web site – www.hydro.gov.au), immediately on the discovery of new dangers or suspected dangers to navigation. For changes or defects in aids to navigation notify AusSAR (Fax 02-6230 6868 or email rccaus@amsa.gov.au).

AUTHORISED USE

Copies of Australian notices are available free of charge from the Australian Hydrographic Service (AHS) website (www.hydro.gov.au) and through the eNotices (email) service (www.hydro.gov.au/enotices/enotices.htm).

Individual Notices may be copied for the purpose of inserting Notice substance on official charts and publications. Paper copies may be printed by chart agents and distributed to customers on a cost recovery basis. Participating chart agents are listed on the AHS website as providing a 'Paper Notices to Mariners' service (www.hydro.gov.au/prodserv/distributors/distributors.htm). Copies of the notices may not be sold for profit without prior written agreement.

NUMERICAL INDEX OF NOTICES TO MARINERS

Edition No 10

Notices	Aus Chart, INT Chart
493.....	Aus 198, 199, 200, 203
494.....	Aus 202, AX 00202T
495.....	Aus 814, 4635, 4643, INT 635, 643
496.....	Aus 237
497.....	Aus 235, 236
498.....	Aus 835, 4620, 4720, INT 620, 720, AX 04620U, 04720U
499.....	Aus 24
500.....	Aus 309, AX 00309T
501.....	Aus 314, 4060, 4603, 4721, 4722, INT 60, 603, 721, 722, AX 00314U, 04603U, 04721U, 04722U
502.....	Aus 58, 59
503.....	Aus 62, 64
504.....	Aus 328, 4708, 4723, 4725, INT 708, 723, 725, AX 04708U, 04723U
505.....	Aus 121
506.....	Aus 121
507.....	Aus 181, 357, 802
508.....	Aus 182
509.....	Aus 4060, 4604, INT 60, 604, AX 04604U
510(T).....	Aus 230
511(T).....	Aus 235, 236, 237, 238, 814, 815
512(T).....	Aus 820, AX 00820S
513(T).....	Aus 270, 292, 293, 833, 835, 839, 841
514(T).....	Aus 507, 4604, 4620, 4621, INT 604, 620, 621, AX04604U, 04620U, 04621U
515(T).....	Aus 519, 520
516(T).....	Aus 386, 548, 673, 4603, 4604, 4622, INT 603, 604, 622, AX 04603U, 04604U
517(T).....	Aus 6
518(T).....	Aus 26, AX 00026T
519(T).....	Aus 24, 26, 27, 28, AX 00026T
520(T).....	Aus 314, 4060, 4603, 4721, 4722, INT 60, 603, 721, 722, AX 00314U, 04721U, 04722U
521(T).....	Aus 326, 4722, INT 722, AX 04722U
522(T).....	Aus 326, 327, 739, 741, 4722, INT 722, AX 04722U
523(T).....	Aus 62, 66, 327, 328, 742, 743
524(T).....	Aus 64, 743, 744
525(T).....	Aus 328, 743, 744
526(T).....	Aus 328, 329, 744
527(T).....	Aus 328, 329, 744
528(T).....	Aus 73
529(T).....	Aus 332, 333, 751, 752, 753
530(T).....	Aus171, 796
531(T).....	Aus 171, 796
532(T).....	Aus 155
533(T).....	Aus 150

493 AUSTRALIA - Product

Australian Hydrographic Service (AA671428, AA671694)

New Chart

<i>Chart</i>	<i>Published</i>	<i>Title and description of amendments</i>	<i>Scale</i>	<i>Index Chart</i>	<i>Price</i>
Aus 200	17/5/2013	Australia - East Coast - New South Wales - Port Jackson 33° 45'.66 S - 33° 54'.50 S 151° 06'.60 E - 151° 24'.70 E Plan: Parramatta River	1:25 000 1:25 000	Aus 5001	\$35.00
		33° 48'.80 S - 33° 50'.80 S 151° 01'.51 E - 151° 06'.78 E <i>New chart with amended limits providing improved coverage of the approaches to Port Jackson.</i>			

Chart permanently withdrawn

<i>Chart</i>	<i>On publication of new chart</i>	<i>Remarks</i>
Aus 200	Aus 200	
Aus 203	Aus 203	NTM 441/2013 refers

Chart to be withdrawn without replacement

<i>Chart</i>	<i>Remarks</i>
Aus 199	On publication of new edition Aus 198 (3Q 2013)

For further details refer to the AHS website at www.hydro.gov.au for new edition and new chart stock arrival information.

When placing orders with a chart agent, mariners should advise whether their order pertains to the current edition or the new edition.

494* AUSTRALIA - NEW SOUTH WALES - Sydney Harbour - Garden Island - Mooring buoy

Australian Hydrographic Service (AA670268)

Aus 202 [282/2013]

Move	lit mooring buoy to	33° 51'.62 S 33° 51'.879 S	151° 14'.29 E 151° 13'.837 E
Delete	depth, 13 ₂ m	33° 51'.88 S	151° 13'.85 E

AX 00202T [282/2013]

Move	lit mooring buoy to	33° 51'.62 S 33° 51'.879 S	151° 14'.29 E 151° 13'.837 E
Delete	depth, 13 ₂ m	33° 51'.88 S	151° 13'.85 E

495* AUSTRALIA - QUEENSLAND - South Stradbroke Island - Wreck eastwards

Australian Hydrographic Service (AA670581), NSW Roads and Maritime Services (AA669408)

Aus 814 [1067/2012]

Insert	safe clearance depth, 55m, enclosed by danger circle with legend, <i>Wk</i>	27° 52'.92 S	153° 39'.16 E
--------	---	--------------	---------------

Aus 4635 (INT 635) [456/2013]

Insert	safe clearance depth, 55m, enclosed by danger circle with legend, <i>Wk</i>	27° 52'.9 S	153° 39'.2 E
--------	---	-------------	--------------

Aus 4643 (INT 643) [283/2013]

Insert	safe clearance depth, 55m, enclosed by danger circle with legend, <i>Wk</i>	27° 52'.9 S	153° 39'.2 E
--------	---	-------------	--------------

496* AUSTRALIA - QUEENSLAND - Brisbane River - Fisherman Islands - Light buoy; berth
Maritime Safety Queensland Notice 354/2013 (AA669828)

Aus 237 [241/2013]

Insert	berth desig, 12	27° 21'.555 S	153° 10'.760 E
Move	light buoy	27° 21'.36 S	153° 10'.72 E
	to	27° 21'.196 S	153° 10'.836 E

497* AUSTRALIA - QUEENSLAND - Caloundra to Spitfire Banks - Light buoys
Maritime Safety Queensland Notice 343(T)/2013 (AA669188)

Aus 235 [1068/2012]

Insert	special spherical light buoy, FI(5)Y.20s, without topmark	26° 50'.84 S	153° 09'.31 E
Delete	light buoy	27° 00'.9 S	153° 15'.4 E

Aus 236 [1114/2012]

Delete	light buoy	27° 00'.9 S	153° 15'.4 E
--------	------------	-------------	--------------

498* AUSTRALIA - QUEENSLAND - Hannibal Islands - Light

Former Notice - 471(P)/2013 is cancelled

Australian Maritime Safety Authority Auscoast Warning 132/2013 (AA671822), Australian Maritime Safety Authority Final ATH 13/2013 (AA671083)

Aus 835 [1181/2012]

Amend	light range to 15M	11° 35'.6 S	142° 56'.7 E
-------	--------------------	-------------	--------------

Aus 4620 (INT 620) [186/2013]

Amend	light range to 15M	11° 35'.6 S	142° 56'.7 E
-------	--------------------	-------------	--------------

Aus 4720 (INT 720) [1246/2012]

Amend	light range to 15M	11° 35'.6 S	142° 56'.7 E
-------	--------------------	-------------	--------------

AX 04620U [186/2013]

Amend	light range to 15M	11° 35'.6 S	142° 56'.7 E
-------	--------------------	-------------	--------------

AX 04720U [1246/2012]

Amend	light range to 15M	11° 35'.6 S	142° 56'.7 E
-------	--------------------	-------------	--------------

499* AUSTRALIA - NORTHERN TERRITORY - Darwin - Emery Point - Light buoy

Darwin Port Corporation Notice 65(T)/2013 (AA669170)

Aus 24 [447/2013]

Move	light buoy	12° 27'.11 S	130° 48'.84 E
	to	12° 27'.097 S	130° 48'.851 E

500* AUSTRALIA - NORTHERN TERRITORY - Shepparton Shoal - Depth

Australian Hydrographic Service (AA670671)

Aus 309 [382/2013]*On certain copies only*

Substitute depth, 47m, for depth, 47m 12° 08'.0 S 129° 52'.0 E

AX 00309T [382/2013]*On certain copies only*

Substitute depth, 47m, for depth, 47m 12° 08'.0 S 129° 52'.0 E

501* AUSTRALIA - TIMOR SEA - Sahul Banks - Mooring buoys

PTTEP Australasia (AA669085, AA669086)

Aus 314 [88/2013]

Delete lit mooring buoy and racon 11° 55'.5 S 125° 00'.4 E

Aus 4060 (INT 60) [456/2013]Delete lit mooring buoy and racon 11° 55'.5 S 125° 00'.4 E
Delete lit mooring buoy 12° 10'.0 S 125° 00'.0 E**Aus 4603 (INT 603) [1248/2012]**

Delete lit mooring buoy and racon 11° 55'.5 S 125° 00'.4 E

Aus 4721 (INT 721) [88/2013]

Delete lit mooring buoy and racon 11° 55'.5 S 125° 00'.4 E

Aus 4722 (INT 722) [88/2013]

Delete lit mooring buoy and racon 11° 55'.5 S 125° 00'.4 E

AX 00314U [88/2013]

Delete lit mooring buoy and racon 11° 55'.5 S 125° 00'.4 E

AX 04603U [1248/2012]

Delete lit mooring buoy and racon 11° 55'.5 S 125° 00'.4 E

AX 04721U [88/2013]

Delete lit mooring buoy and racon 11° 55'.5 S 125° 00'.4 E

AX 04722U [88/2013]

Delete lit mooring buoy and racon 11° 55'.5 S 125° 00'.4 E

502* AUSTRALIA - WESTERN AUSTRALIA - Dampier - Depths

Dampier Port Authority (DHDB 2273079)

Aus 58 [39/2013]

Insert accompanying block 20° 36'.5 S 116° 44'.5 E

Aus 59 [39/2013]

Insert accompanying block 20° 36'.9 S 116° 44'.9 E

503* AUSTRALIA - WESTERN AUSTRALIA - Barrow Island - Military exercise areas

Australian Hydrographic Service (AA276464)

Aus 62 [448/2013]

Insert	magenta legend, <i>Military Exercise Area (see Note)</i>	20° 50'.3 S	115° 35'.5 E
	accompanying note	20° 49'.5 S	115° 26'.0 E

Aus 64 [91/2013]

Insert	magenta legend, <i>Military Exercise Area (see Note)</i>	21° 24'.0 S	114° 48'.0 E
	accompanying note	21° 20'.0 S	114° 51'.5 E

504* AUSTRALIA - WESTERN AUSTRALIA - Barrow Island - Platform; light buoy westwards

Apache Energy Ltd (AA669526)

Aus 328 [329/2013]

Substitute	lit platform, <i>Mo(U)10s 5M</i> , for light buoy	20° 43'.4 S	114° 59'.1 E
------------	---	-------------	--------------

Aus 4708 (INT 708) [189/2013]

Substitute	lit platform for light buoy	20° 43'.0 S	114° 59'.0 E
------------	-----------------------------	-------------	--------------

Aus 4723 (INT 723) [329/2013]

Substitute	lit platform for light buoy	20° 43'.0 S	114° 59'.0 E
------------	-----------------------------	-------------	--------------

Aus 4725 (INT 725) [329/2013]

Substitute	lit platform for light buoy	20° 43'.0 S	114° 59'.0 E
------------	-----------------------------	-------------	--------------

AX 04708U [189/2013]

Substitute	lit platform for light buoy	20° 43'.0 S	114° 59'.0 E
------------	-----------------------------	-------------	--------------

AX 04723U [329/2013]

Substitute	lit platform for light buoy	20° 43'.0 S	114° 59'.0 E
------------	-----------------------------	-------------	--------------

505* AUSTRALIA - SOUTH AUSTRALIA - Blanche Port - Smoke House Bay - Marine farm

Primary Industries and Regions SA (DHDB 2351298)

Aus 121 (plan, Blanche Port) [1126/2012]

Delete	marine farm	32° 46'.0 S	134° 11'.5 E
--------	-------------	-------------	--------------

Aus 121 (plan, Streaky Bay)

Delete	marine farm	32° 46'.0 S	134° 11'.5 E
--------	-------------	-------------	--------------

506* AUSTRALIA - SOUTH AUSTRALIA - Coffin Bay - Marine farm

Primary Industries and Regions SA (DHDB 2351298)

Aus 121 (plan, Coffin Bay) [505/2013]

Insert	marine farm symbol	34° 37'.27 S	135° 28'.50 E
--------	--------------------	--------------	---------------

507* AUSTRALIA - VICTORIA - Corner Inlet - Lighthouse Point - Light buoys; light sectors

Former Notice - 492(P)/2013 is cancelled

Victorian Notice 65/2013 (AA671120)

Aus 181 [333/2013]

Move	light buoy	38° 51'.3 S	146° 35'.6 E
	to	38° 51'.33 S	146° 35'.61 E
	light buoy	38° 51'.1 S	146° 34'.0 E
	to	38° 51'.18 S	146° 34'.03 E
Amend	light centreline bearing to 278° with sectors	38° 50'.6 S	146° 28'.4 E
	Green 273° - 277° (4°)		
	White 277° - 279° (2°)		
	Red 279° - 283° (4°)		

Aus 357 [1196/2012]

Insert	a dashed line in a direction 098° for a distance of 4.25M, thence a continuous line for 4.25M, with legend <i>Dir 278°</i> , emanating from light	38° 50'.51 S	146° 28'.43 E
Delete	dashed and continuous line with legend, emanating from light	38° 50'.5 S	146° 28'.4 E

Aus 802 [1196/2012]

Amend	light centreline bearing to <i>Dir 278°</i> with sectors	38° 50'.6 S	146° 28'.4 E
	Green 273° - 277° (4°)		
	White 277° - 279° (2°)		
	Red 279° - 283° (4°)		

508* AUSTRALIA - VICTORIA - Port Welshpool - Lewis Channel - Light beacon

Gippsland Ports (AA669334 - AA669336)

Aus 182 (plan, Lewis Channel) [333/2013]

Move	light beacon	38° 43'.74 S	146° 25'.57 E
	to	38° 43'.864 S	146° 25'.559 E
Delete	depth, 4 ₃ m	38° 43'.81 S	146° 25'.54 E
	depth, 0 ₄ m	38° 43'.89 S	146° 25'.60 E

509* AUSTRALIA - CORAL SEA - Rennell Island - Depths southeastwards

Geoscience Australia 4398 (AA670936)

Aus 4060 (INT 60) [501/2013]

Insert	depth, 827m, and extend contour N to enclose	13° 39'.0 S	162° 13'.8 E
Delete	depth, 1503m	13° 42'.0 S	162° 14'.0 E

Aus 4604 (INT 604) [1245/2012]

Insert	depth, 827m, and extend contour N to enclose	13° 39'.0 S	162° 13'.8 E
Delete	depth, 1503m	13° 42'.0 S	162° 14'.0 E

AX 04604U [1245/2012]

Insert	depth, 827m, and extend contour N to enclose	13° 39'.0 S	162° 13'.8 E
Delete	depth, 1503m	13° 42'.0 S	162° 14'.0 E

510(T)/2013 AUSTRALIA - QUEENSLAND - The Broadwater - South Channel - Dredging operations

Former Notice - 199(T)/2013 is cancelled

Date - Until 12 July 2013

Maritime Safety Queensland Notice 380(T)/2013 (AA672047)

The dredge *Dogo* and support vessels are conducting dredging operations between light beacons GS4 (27° 56'.20 S 153° 25'.49 E) and SC2 (27° 56'.40 S 153° 25'.26 E).

A floating pipeline exists in the channel and temporary nav aids will be established to guide vessels around the area.

The dredge will monitor VHF Ch 16.

Mariners are advised to navigate with caution in the area.

Chart temporarily affected - Aus 230

511(T)/2013 AUSTRALIA - QUEENSLAND - Moreton Bay - Brisbane River - Depth information

Former Notice - 459(T)/2013 is cancelled

Brisbane Port Corporation (AA671625)

Available depths and under keel clearances (UKC) at 10 May 2013:

<i>Berth</i>	<i>Metres</i>	<i>Remarks</i>
* Fisherman Islands No12	14.0	
Fisherman Islands No11	13.4	
Fisherman Islands No10	13.3	
Fisherman Islands No9	13.3	
Fisherman Islands No8	13.1	
* Fisherman Islands No7	13.3	
Fisherman Islands No6	13.7	
Fisherman Islands No5	13.3	
Fisherman Islands No4	13.3	
* Fisherman Islands No3	12.9	
Fisherman Islands No2	13.0	
Fisherman Islands No1	13.0	
Fisherman Islands Grain and Woodchip	12.2	
Caltex Fisherman Islands	14.4	
Fisherman Islands Coal	13.6	
Fisherman Islands General Purpose	10.7	
* BP Luggage Point	14.1	
* Caltex Products	10.1	
* Cement Australia Co Wharf	9.8	
* BP Products	10.5	
* Shell	10.5	
* Pacific Terminals	10.5	
* Incitec North	8.9	
* Incitec South	8.8	
* Pinkenba 1	10.4	
* Pinkenba 2	10.4	
Riverside Marina	-	
Sugar Terminal	9.9	
Cairncross Fitting Out Wharf	7.4	
Cairncross Breasting Wharf	5.5	
Brisbane Naval Wharf	4.3	
* Maritime No1	8.5	
* Hamilton No4	9.6	
Hamilton No1	8.6	
Brisbane Cruise Ship Terminal	8.6	
	<i>Metres</i>	<i>UKC/Remarks</i>
<i>Moreton Bay:</i>		
North West Channel	15.0	2.3 (280m width)
North West Bypass Channel	9.2	1.6
Spitfire Channel	15.0	1.5 (600m width) Shoaling least depth, 14.6m, exists in position 27° 02'.39 S 153° 15'.66 E.
East Knoll Bypass Channel	6.0	1.4
East Channel	15.0	1.5 (300m width from western side)
Main Channel (M8 - M9)	10.0	1.8
Entrance Channel (E5 - EBCN)	14.7	1.5
<i>Brisbane River:</i>		
Outer Bar Cutting	13.9	1.46
Inner Bar Cutting	13.5	1.46
Fisherman Islands Swing Basin	13.6	1.3
* River	8.7	0.6 / 0.9 (draft/tide)
Cement Australia Swing Basin	9.1	0.6 / 0.9 (draft/tide)
* Pinkenba Swing Basin	8.7	0.6 / 0.9 (draft/tide)
Hamilton Swing Basin	8.4	0.6 / 0.9 (draft/tide)
* Indicates new or revised entry.		

Chart temporarily affected - Aus 235 - Aus 236 - Aus 237 - Aus 238 - Aus 814 - Aus 815

17 May 2013

512(T)/2013 AUSTRALIA - QUEENSLAND - North Keppel Island - Wreck
Maritime Safety Queensland Notice 379(T)/2013 (AA671710)

A wreck marked by a special buoy exists in position 23° 03'.80 S 150° 53'.24 E.

Mariners are advised to navigate with caution in the area.

Chart temporarily affected - Aus 820 - AX 00820S

513(T)/2013 AUSTRALIA - QUEENSLAND - Singleton Rock to Reeves Shoal - AIS trial

Date - Until 15 August 2013

Australian Maritime Safety Authority Final ATH 10/2013, 11/2013, 12/2013 (AA668138, AA668136, AA668137)

Virtual AIS units exist as follows:

MMSI	Position	Remarks
995036057	10° 31'.62 S 142° 26'.80 E	South cardinal mark
995036058	11° 25'.35 S 142° 56'.25 E	Isolated danger mark
995036059	14° 09'.70 S 144° 37'.80 E	Isolated danger mark

Chart temporarily affected - Aus 270 - Aus 292 - Aus 293 - Aus 833 - Aus 835 - Aus 839 - Aus 841

514(T)/2013 PAPUA NEW GUINEA - Ava Point - Light unlit

National Maritime Safety Authority PNG Notice 22(T)/2013 (AA671696)

The light, *Fl.12s 188m 10M* (10° 34'.14 S 149° 52'.89 E), is unlit.

Chart temporarily affected - Aus 507 - Aus 4604 (INT 604) - Aus 4620 (INT 620) - Aus 4621 (INT 621) - AX 04604U - AX 04620U - AX 04621U

515(T)/2013 PAPUA NEW GUINEA - Veale Reef - Light unlit

National Maritime Safety Authority PNG Notice 21(T)/2013 (AA671696)

The light, *Fl.2.5s 9m 10M* (9° 11'.94 S 149° 28'.72 E), is unlit.

Chart temporarily affected - Aus 519 - Aus 520

516(T)/2013 PAPUA NEW GUINEA - Dampier Strait - Light beacon relit

Former Notice - 472(T)/2013 is cancelled

National Maritime Safety Authority PNG Notice 24/2013 (AA672598)

Cancel this notice on receipt.

Chart formerly affected - Aus 386 - Aus 548 - Aus 673 - Aus 4603 (INT 603) - Aus 4604 (INT 604) - Aus 4622 (INT 622) - AX 04603U - AX 04604U

517(T)/2013 AUSTRALIA - QUEENSLAND - Karumba - Depth information*Former Notice - 756(T)/2012 is cancelled*

Maritime Safety Queensland Notices 373(T)/2013, 374(T)/2013 (AA671723, AA671724)

Available depths as at 9 May 2013:

<i>Berth</i>	<i>Metres</i>	<i>Remarks</i>
* Entrance Channel	3.2	Shoaling exists on the northern side of the channel in the vicinity of position 17° 26'.64 S 140° 45'.32 E. Mariners are advised to navigate south of the centreline of the channel.
Mobil/Trinity Wharf	6.3	
Raptis Wharf	5.3	
Ruby Marine Wharf	5.3	
Gulf Freight Services Wharf	6.2	
Karumba Cold Stores Wharf	6.2	
Seaswift/Shell Wharf	6.2	
Karumba Livestock Loading Wharf	5.4	
Gulf Freight Services Ramp/Wharf	4.6	
Pasminco Export Wharf	4.2	

* Indicates revised entry.

Chart temporarily affected - Aus 6**518(T)/2013 AUSTRALIA - NORTHERN TERRITORY - Darwin - Middle Ground - Obstruction**

Darwin Port Corporation Notice 75(T)/2013 (AA670992)

An obstruction exists within a 50m radius of position 12° 23'.75 S 130° 46'.43 E.

Mariners are advised not to anchor within the area.

Chart temporarily affected - Aus 26 - AX 00026T**519(T)/2013 AUSTRALIA - NORTHERN TERRITORY - Darwin - West Point to Elizabeth River - Light buoys***Former Notice - 409(T)/2013 is cancelled**Date - Until 30 November 2014*

Darwin Port Corporation Notice 79(T)/2013 (AA671776)

Special light buoys, *Fl. Y. 3s*, exist in the following positions:

12° 26'.12 S 130° 46'.20 E
 12° 29'.25 S 130° 48'.00 E
 12° 29'.48 S 130° 48'.16 E
 12° 32'.88 S 130° 50'.75 E
 12° 29'.82 S 130° 52'.41 E
 12° 33'.05 S 130° 52'.41 E
 12° 30'.67 S 130° 54'.07 E.

Special light buoys, *Fl. Y. 5-5s*, exist in the following positions:

12° 29'.27 S 130° 51'.42 E
 12° 29'.78 S 130° 52'.08 E
 12° 29'.74 S 130° 53'.10 E.

Chart temporarily affected - Aus 24 - Aus 26 - Aus 27 - Aus 28 - AX 00026T**520(T)/2013 AUSTRALIA - TIMOR SEA - Sahul Banks - Obstruction***Former Notice - 269(T)/2013 is cancelled*

PTTEP Australasia (AA669085, AA669086)

An obstruction with least depth 109m exists in position 11° 55'.45 S 125° 00'.45 E.

Chart temporarily affected - Aus 314 - Aus 4060 (INT 60) - Aus 4603 (INT 603) - Aus 4721 (INT 721) - Aus 4722 (INT 722) - AX 00314U - AX 04721U - AX 04722U

17 May 2013

521(T)/2013 AUSTRALIA - WESTERN AUSTRALIA - Rowley Shoals - Seismic survey westwards

Date - Until 15 July 2013

Repsol (AA668692)

SV *Polarcus Alima* with a 8000m towed array and support vessels *Sealink 161*, *Limitless* and *Empress* are conducting a survey in the area bounded by the following positions:

17° 08'.03 S 117° 46'.48 E
 17° 07'.93 S 118° 09'.53 E
 17° 35'.02 S 118° 09'.60 E
 17° 35'.13 S 117° 46'.56 E.

Chart temporarily affected - Aus 326 - Aus 4722 (INT 722) - AX 04722U**522(T)/2013 AUSTRALIA - WESTERN AUSTRALIA - Dampier Archipelago - Seismic survey completed northeastwards**

Former Notice - 110(T)/2013 is cancelled

Australian Maritime Safety Authority Auscoast Warning 69/2013 (AA672173)

Cancel this notice on receipt.

Chart formerly affected - Aus 326 - Aus 327 - Aus 739 - Aus 741 - Aus 4722 (INT 722) - AX 04722U**523(T)/2013 AUSTRALIA - WESTERN AUSTRALIA - Barrow Island - Harbour works**

Former Notice - 421(T)/2013 is cancelled

Date - Until 31 March 2014

Department of Transport WA Notices 129/2012, 14/2013 (AA644896, AA671110)

Works associated with the construction of a jetty are in progress at Town Point. An exclusion zone exists in an area bounded by the following:

Position	Remarks
20° 47'.48 S 115° 28'.07 E	
20° 47'.48 S 115° 29'.04 E	
20° 48'.40 S 115° 30'.55 E	special conical light buoy, Q. Y
20° 50'.19 S 115° 30'.53 E	special conical light buoy, Q. Y
20° 50'.17 S 115° 28'.82 E	special conical light buoy, Q. Y
20° 48'.95 S 115° 28'.84 E	special conical light buoy, Q. Y
20° 47'.52 S 115° 28'.56 E.	

The infrastructure associated with the works is marked by lights, *Fl.3s*.

Barges and support vessels will monitor VHF Ch 10 and Ch 73 and display appropriate lights and shapes.

Mariners are advised to navigate with caution in the area.

Chart temporarily affected - Aus 62 - Aus 66 - Aus 327 - Aus 328 - Aus 742 - Aus 743

524(T)/2013 AUSTRALIA - WESTERN AUSTRALIA - West Reef to Fly Island - Scientific instruments*Former Notice* - 315(T)/2013 is cancelled*Date* - Until 29 February 2016

Department of Transport WA Notice 70/2013 (AA672344)

Scientific instruments marked by special spar light buoys, *Fl.Y.6s*, exist in the following positions:

21° 19'.66 S 115° 23'.45 E
 21° 19'.66 S 115° 09'.50 E
 21° 27'.04 S 115° 02'.00 E
 21° 28'.93 S 115° 01'.54 E
 21° 30'.02 S 114° 50'.23 E
 21° 30'.11 S 114° 55'.27 E
 21° 31'.73 S 114° 46'.25 E
 21° 33'.85 S 115° 00'.45 E
 21° 34'.69 S 114° 54'.30 E
 21° 35'.20 S 114° 56'.38 E
 21° 37'.84 S 114° 41'.51 E
 21° 43'.17 S 114° 46'.17 E.

Chart temporarily affected - Aus 64 - Aus 743 - Aus 744**525(T)/2013 AUSTRALIA - WESTERN AUSTRALIA - Serrurier Island to Locker Island - Pipeline works completed***Former Notice* - 429(T)/2013 is cancelled

McDermott Australia Pty Ltd (AA671457)

Cancel this notice on receipt.

Chart formerly affected - Aus 328 - Aus 743 - Aus 744**526(T)/2013 AUSTRALIA - WESTERN AUSTRALIA - North West Cape - Drill rig northwards***Former Notice* - 484(T)/2013 is cancelledMODU *Nan Hai 6* (AA671022)Drill rig *Nan Hai 6* is conducting drilling operations in position 21° 31'.77 S 114° 05'.12 E.**Chart temporarily affected - Aus 328 - Aus 329 - Aus 744****527(T)/2013 AUSTRALIA - WESTERN AUSTRALIA - North West Cape - Pipeline northwards***Date* - Until 1 August 2013

Apache Energy Ltd (AA629433, AA671444 - AA671446)

OSCV *Boa Sub C* is conducting pipe laying operations between the following positions:

21° 20'.21 S 114° 04'.93 E
 21° 20'.95 S 114° 04'.39 E
 21° 23'.21 S 114° 04'.60 E.

A 500m exclusion zone exists around the vessel.

Mariners are advised to navigate with caution in the area.

Chart temporarily affected - Aus 328 - Aus 329 - Aus 744

528(T)/2013 AUSTRALIA - WESTERN AUSTRALIA - Carnarvon - Gascoyne River - Obstruction removed
Former Notice - 118(T)/2013 is cancelled
Department of Transport (AA672337)

Cancel this notice on receipt.

Chart formerly affected - Aus 73

529(T)/2013 AUSTRALIA - WESTERN AUSTRALIA - Pelsaert Bank - Seismic survey completed
Former Notice - 488(T)/2013 is cancelled
S2V Consulting Pty Ltd (AA669441)

Cancel this notice on receipt.

Chart formerly affected - Aus 332 - Aus 333 - Aus 751 - Aus 752 - Aus 753

530(T)/2013 AUSTRALIA - TASMANIA - Dorman Point - Scientific instrument recovered
Former Notice - 1228(T)/2012 is cancelled
Marine and Safety Tasmania (AA670494)

Cancel this notice on receipt.

Chart formerly affected - Aus 171 - Aus 796

531(T)/2013 AUSTRALIA - TASMANIA - Frederick Henry Bay - Isle of Caves - Light unlit
Marine and Safety Tasmania Notice M58/2013 (AA672366)

The light, *LFl.R.7s 12m 3M* (42° 54'.43 S 147° 39'.02 E), is unlit.

Chart temporarily affected - Aus 171 - Aus 796

532(T)/2013 AUSTRALIA - VICTORIA - Port Phillip - St Kilda - Harbour works*Former Notice - 366(T)/2013 is cancelled**Date - Until 30 October 2013*

Victorian Notices 19(T)/2013, 46(T)/2013, 66(T)/2013 (AA649627, AA664916, AA671811)

Works associated with the development of a new marina are in progress.

Temporary landings will be installed in positions 37° 51'.63 S 144° 57'.95 E, 37° 51'.83 S 144° 57'.85 E and 37° 51'.64 S 144° 57'.76 E.

A temporary groyne will be installed between positions 37° 51'.64 S 144° 58'.17 E and 37° 51'.63 S 144° 57'.95 E. Special light buoys, *Fl. Y.5s*, which mark the groyne exist in positions 37° 51'.61 S 144° 57'.94 E and 37° 51'.67 S 144° 57'.97 E.Lit piles and special light buoys, *Fl. Y.5s*, which mark the construction zone exist in the following positions:

37° 51'.641 S 144° 57'.743 E
 37° 51'.644 S 144° 57'.862 E
 37° 51'.642 S 144° 57'.941 E
 37° 51'.609 S 144° 57'.837 E
 37° 51'.612 S 144° 57'.830 E
 37° 51'.616 S 144° 57'.824 E
 37° 51'.619 S 144° 57'.818 E
 37° 51'.622 S 144° 57'.811 E
 37° 51'.626 S 144° 57'.805 E
 37° 51'.629 S 144° 57'.798 E
 37° 51'.633 S 144° 57'.791 E.

All hazards to navigation will be marked by lights.

Mariners are advised to navigate with caution in the area.

Chart temporarily affected - Aus 155**533(T)/2013 AUSTRALIA - VICTORIA - The Narrows - San Remo - Dredging operations completed; shoaling removed***Former Notices - 77(T)/2013, 320(T)/2013 are cancelled*

Victorian Notice 62(T)/2013 (AA670069)

Cancel this notice on receipt.

Chart formerly affected - Aus 150

HYDROGRAPHIC REPORTS

<i>Locality</i>	<i>Report</i>	<i>Ship/Authority</i>	<i>Observer</i>
AHS-Product	Australian Pilot Vol III		M Bresman

NAVIGATION WARNINGS

The following radio messages have been received during the period to 17 May 2013. Signal copies of these messages may be destroyed. It is recommended that the reprint of Navigational Warnings should be kept in a file or a book divided into areas. Cancellation should be made on receipt of signals and reprints.

Rigs on location other than those listed in the latest Section III summary are the subject of Radio Navigational Warnings. Rigs in transit will not be the subject of Warnings.

AUSCOAST WARNING

- 129 Cancelled.
 130 Drill rig *Nan Hai 6* in position 21° 31'.76 S 114° 05'.10 E. 2.5M clearance requested.
 131 Special purpose vessel *Ramform Explorer* conducting seismic survey in an area bounded by 19° 52'.0 S to 20° 17'.0 S and 114° 48'.0 E to 115° 25'.0 E. 5M clearance requested.
 132 Hannibal Islands light K3248 in position 11° 35'.56 S 142° 56'.68 E range increased to 15M.
 133 Special purpose vessel *Viking Vision* conducting seismic survey in an area bounded by 13° 40'.0 S to 17° 40'.0 S and 120° 00'.0 E to 121° 40'.0 E. 5M clearance requested.
 134 Special purpose vessel *Solitaire* conducting pipe laying operations in an area bounded by 19° 47'.0 S to 20° 43'.0 S and 114° 41'.0 E to 115° 24'.0 E. 1M clearance requested.
 135 Special purpose vessel *Crest Odyssey 2* conducting underwater operations in position 21° 36'.0 S 114° 12'.0 E. 2.5M clearance requested.
 136 Cancelled.
 137 Pipon Island light K3224 in position 14° 07'.71 S 144° 30'.87 E reduced power.
 138 Cancelled.
 139 Nardana Patches current meter in position 10° 30'.28 S 142° 14'.63 E unreliable.
 140 Drill rig *Atwood Falcon* in position 20° 04'.23 S 115° 11'.00 E. 2.5M clearance requested.

NAVAREA X WARNINGS

- 023 Cancelled.
 024 Cancelled.

Navigational warnings in force as at 170001UTC MAY 13.**Auscoast**

2012 318

2013 014 019 024 026 028 063 070 075 082 091 096 098 099 105 107 109 110 111 118 121 122 123 125 130 131 132 134
 135 137 139 140

Navarea X

2013 018

Summary of mobile drilling rigs as at 170001UTC MAY 13.

<i>Name</i>	<i>Position</i>
Jack Bates	13° 24'.93 S 123° 18'.21 E
Transocean Legend	13° 44'.28 S 122° 20'.13 E
Ensco 109	20° 00'.38 S 115° 38'.29 E
Atwood Falcon	20° 04'.23 S 115° 11'.00 E
Ensco 104	21° 19'.51 S 115° 06'.45 E
Atwood Osprey	20° 24'.30 S 114° 50'.57 E
Ocean America	20° 45'.41 S 114° 44'.00 E
Deepwater Frontier	19° 47'.59 S 114° 38'.93 E
Nan Hai 6	21° 31'.76 S 114° 05'.10 E
Noble Clyde Boudreaux	22° 05'.20 S 113° 10'.85 E
Atwood Eagle	20° 57'.49 S 113° 05'.67 E

NAVAREA XIV WARNINGS

- 031 The International Hydrographic Organization's World-wide Navigational Warning Service (WWNWS) is conducting a survey concerning the quality of Maritime Safety Information broadcast via SAFETYNET and NAVTEX to identify measures to improve service. Please visit www.surveymonkey.com/s/iho_survey to complete the short survey. The World Meteorological Organization offers a similar survey regarding the World-wide Meteorological Information and Warning Service available at www.jcomm.info/mmms. Your participation is greatly appreciated and valued.
- 032 Cancelled.
- 033 Cancelled.
- 034 Cancelled.
- 035 South Pacific Ocean. Hazardous operations space debris daily between 0438 and 0602 UTC 03 May 13 and 3 June 13 in area bounded by:
 33° 08'.0 S 93° 12'.0 W
 33° 06'.0 S 91° 31'.0 W
 44° 29'.0 S 88° 15'.0 W
 44° 40'.0 S 89° 57'.0 W.

Navarea XIV warnings in force as at 170001UTC MAY 13.

2013 031 035
2012 076

To accompany Australian Notice to Mariners 503/2013

MILITARY EXERCISE AREAS
Military operations are conducted within the
area of this chart. For area limits and details
see Australian Notice to Mariners No 9.

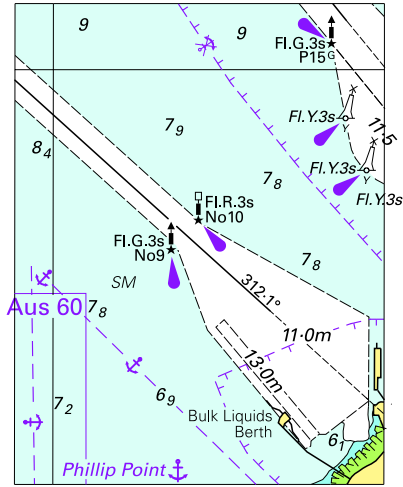
Note for chart Aus 62.

To accompany Australian Notice to Mariners 503/2013

MILITARY EXERCISE AREAS
Military operations are conducted within the
area of this chart. For area limits and details
see Australian Notice to Mariners No 9.

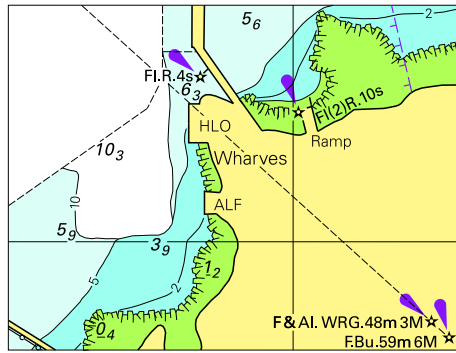
Note for chart Aus 64.

To accompany Australian Notice to Mariners 502/2013



Block for Aus 58 (64.0 x 48.8mm)
©Commonwealth of Australia 2013

To accompany Australian Notice to Mariners 502/2013



Block for Aus 59 (59.7 x 45.6mm)
©Commonwealth of Australia 2013