

To accompany Australian Notice to Mariners 374/2013

Yamba, NSW (29° 26'S, 153° 21'E) UN/LOCODE: AU YBA	
Chart:	Aus 222
Security Regulated Port:	Yes
Port Authority:	Sydney Ports Corporation
Telephone:	+61 2 9296 4999
Website:	www.yambaport.com.au
email:	yambaenquiries@yambaport.com.au
Yamba Harbour Control:	
Telephone:	+61 2 6646 2002
Fax:	+61 2 6646 1596
email:	yambapilots@yambaport.com.au
Ordering:	Through Agent
Pilotage:	Compulsory > 30 metres LOA
Pilot boarding Grounds:	North 29° 25.17'S, 153° 23.24'E South 29° 26.02'S, 153° 22.74'E
Communication	"Yamba Harbour"
Call up, emergencies:	VHF Ch 16
Operations / Pilots :	VHF Ch 11
Port working:	VHF Ch 09, 10
Notice of ETA:	72 hours; thence 48 and 24 hours
For more information:	www.yambaport.com.au

To accompany Australian Notice to Mariners 375/2013

UNEXPLODED ORDNANCE

The area is safe for surface navigation only; it is not safe for anchoring, trawling or seabed activities. For details see Australian Notice to Mariners No 12.

Note for chart Aus 201.

To accompany Australian Notice to Mariners 375/2013

UNEXPLODED ORDNANCE

The area is safe for surface navigation only; it is not safe for anchoring, trawling or seabed activities. For details see Australian Notice to Mariners No 12.

Note for chart AX 00201T.

To accompany Australian Notice to Mariners 380/2013

UNEXPLODED ORDNANCE

The area is safe for surface navigation only; it is not safe for anchoring, trawling or seabed activities. For details see Australian Notice to Mariners No 12.

Note for chart Aus 507.

To accompany Australian Notice to Mariners 380/2013

UNEXPLODED ORDNANCE

The area is safe for surface navigation only; it is not safe for anchoring, trawling or seabed activities. For details see Australian Notice to Mariners No 12.

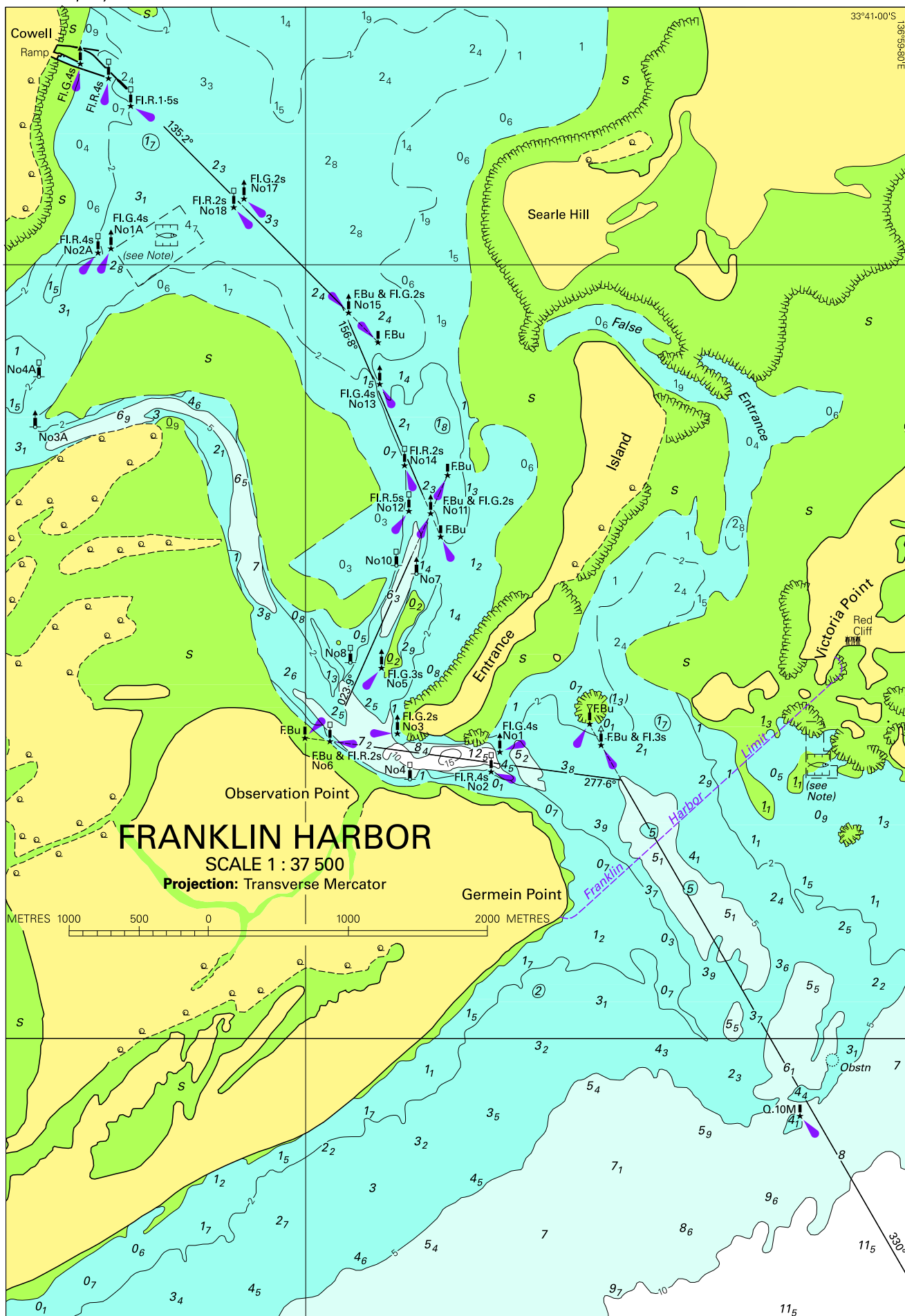
Note for chart Aus 508.

To accompany Australian Notice to Mariners 391/2013

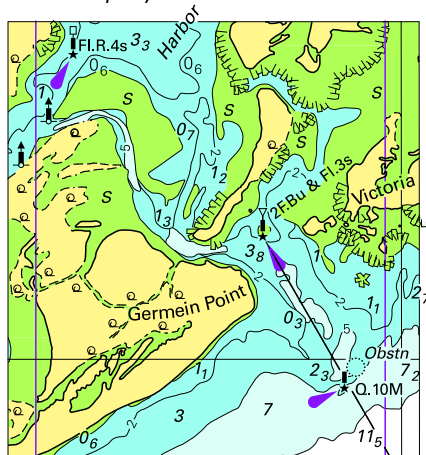
UNEXPLODED ORDNANCE

The area is safe for surface navigation only; it is not safe for anchoring, trawling or seabed activities. For details see Australian Notice to Mariners No 12.

Note for chart Aus 158.



To accompany Australian Notice to Mariners 388/2013



© Commonwealth of Australia 2013

Block B for Aus 777

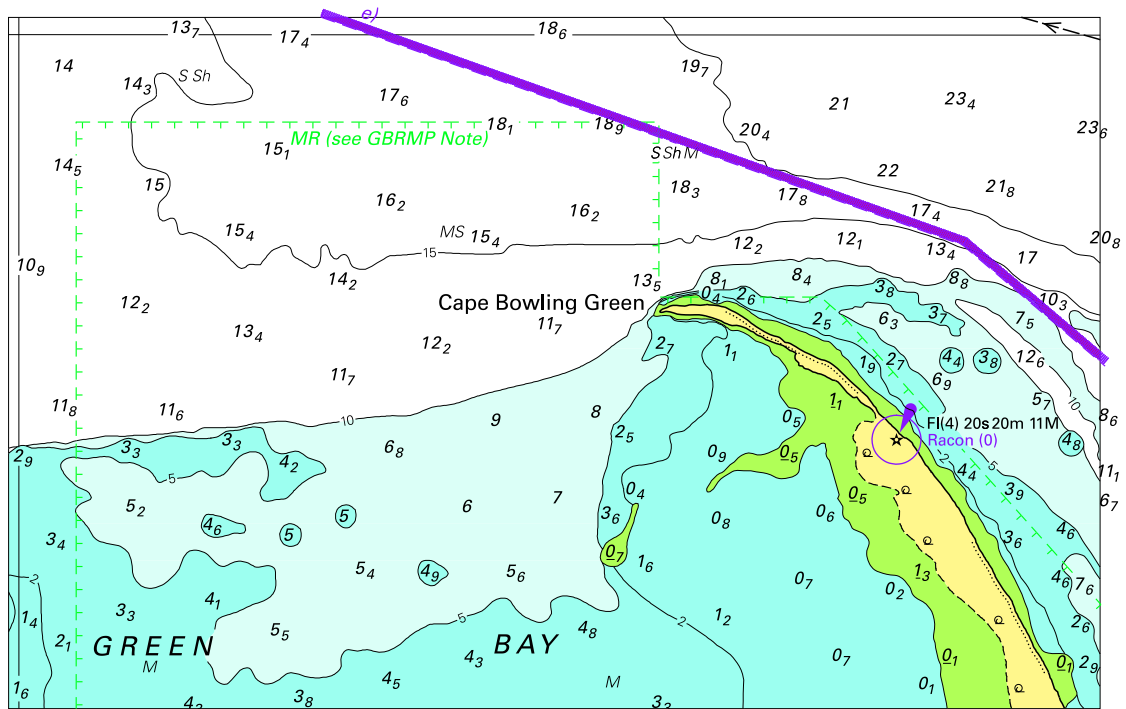
(52.3 x 57.7mm)

A map of the Cape Bowling Green area. A thick purple line runs diagonally from the top left towards the center. Bathymetric contours are shown in various colors: light blue for depths 0-10m, green for 10-20m, yellow for 20-30m, and light green for 30-40m. Numerous numerical values are scattered across the map, representing depth or other measurements. A star is located in the yellow-shaded area, with a purple circle around it. Text next to the star reads "FI(4) 20s20m 11M" and "Racon (0)". The map includes a north arrow in the top right corner.

Block for chart Aus 826

(52.1 x 91.4mm)

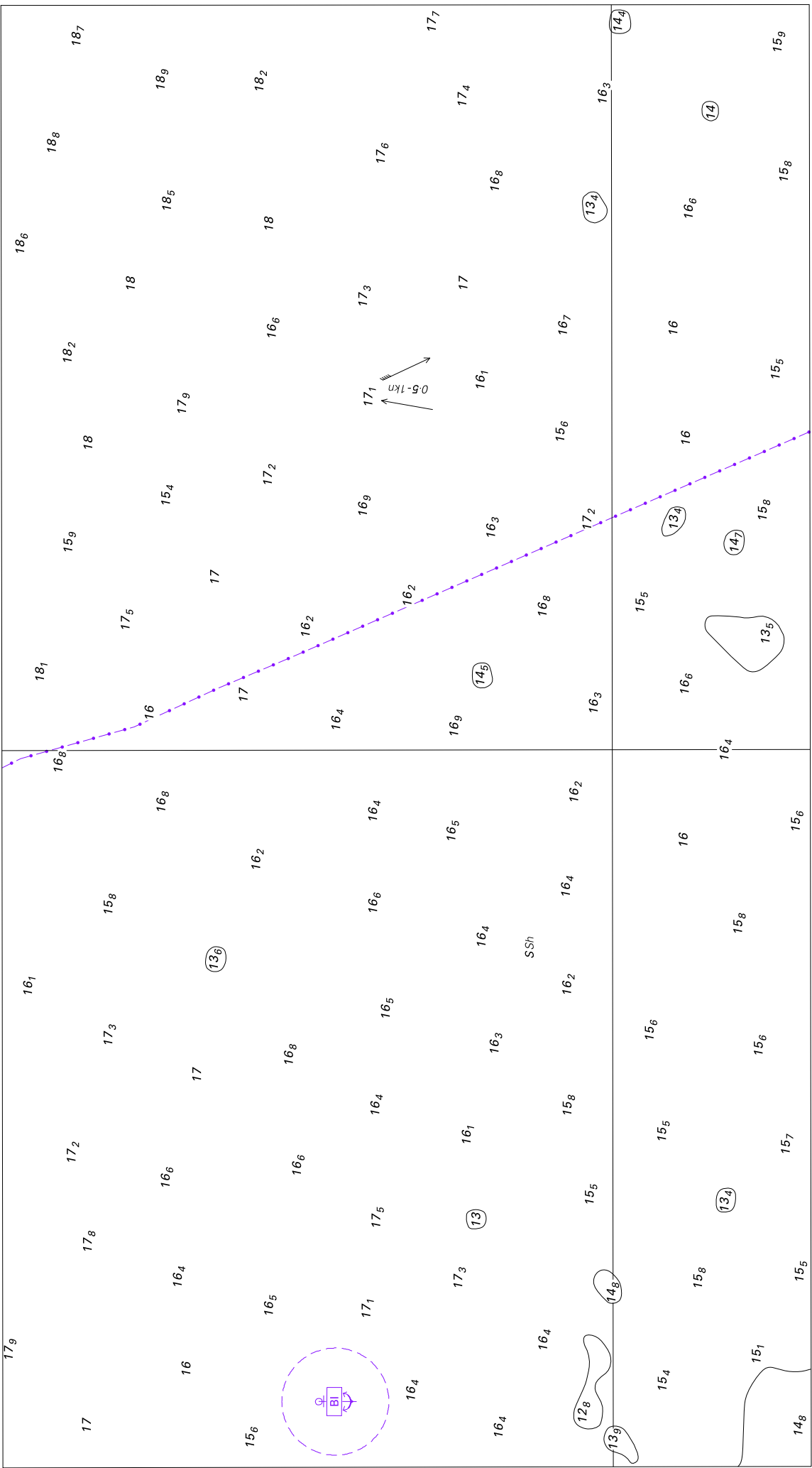
To accompany Australian Notice to Mariners 376/2013



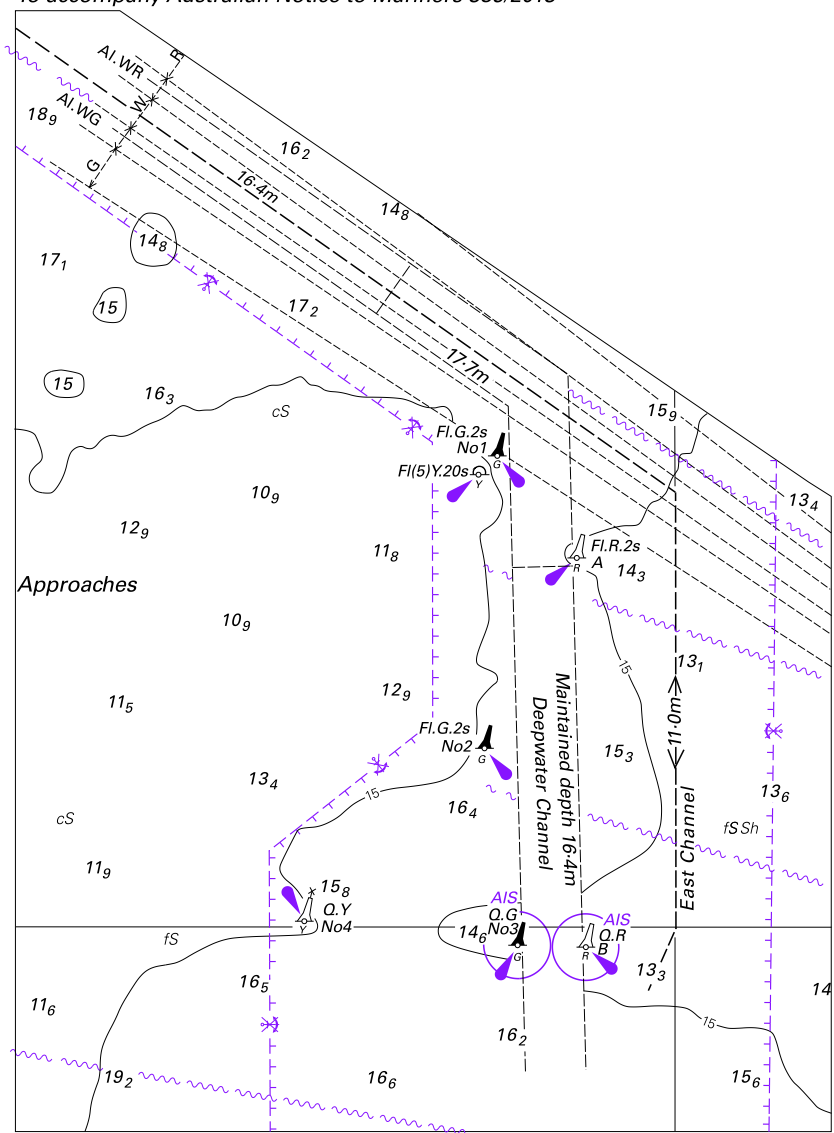
Block for chart Aus 827

© Commonwealth of Australia 2013

(144.4 x 91.4mm)



To accompany Australian Notice to Mariners 385/2013



Block for chart Aus 112 © Commonwealth of Australia 2013

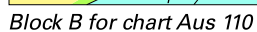
(148.2 x 107.9mm)

Map of the Albany Harbour area showing various locations, depths, and tidal levels. The map includes labels for 'Green Island (12)', 'OYSTER', 'HARBOUR', 'EMU POINT', 'Ringbolt Rock', 'Skippy VQ(9) 10s 6m 4M', 'Emu Beach', 'Marsh', 'Floodlit TR F.19m', 'Jetty', 'F.Bu', 'F.Bu', 'F.L.R.3s', 'F.L.G.3s', 'Historic Wk (see Note)', and 'Tidal Levels referre'. A table in the bottom right corner provides coordinates for Albany: Lat S 35°02', Long E 117°53', and HAT 1.4.

Place	Lat S	Long E	HAT
Albany	35°02'	117°53'	1.4

(160.0 x 83.7mm)

Marsh



(227.2 x 170.0mm)

This nautical chart depicts Morgan Bay and its surrounding areas. Key features include:

- Points and Landmarks:** Kingston Point, Eagle Point, Picnic Point, Pelican Point, Sampsons Point, Kennedy Point, and Morgan Bay.
- Waterways:** A channel is shown on the left side of the bay.
- Infrastructure:** A road is located at the bottom left, and a jetty and slipway are at the bottom right.
- Navigational Aids:**
 - Fl.G. 5s (Flashing Green Light, 5 seconds)
 - V.Q. Bu (Variable Quick Buoys)
 - Various numbered buoys (No. 1 through No. 34) with different colors and shapes.
- Depth Soundings:** Numerous depth soundings are provided throughout the bay, ranging from 0.2 to 19.5 meters.
- Other Labels:** "see Note/" is written near the V.Q. Bu, and "Ant h" is partially visible on the right side.