

*To accompany Australian Notice to Mariners 98/2013*

MARINE FARMS

Marine farms, which may be floating or fixed structures and their associated moorings should be avoided. The farms are generally marked by buoys or beacons, which may be lit. Their charted positions are approximate.

*Note for chart Aus 170.*

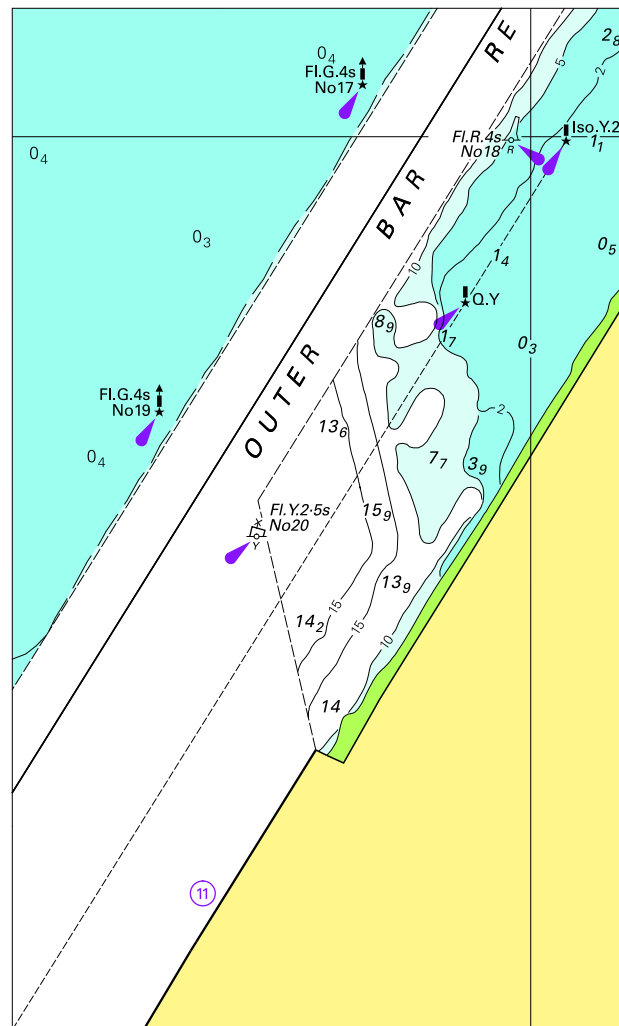
*To accompany Australian Notice to Mariners 98/2013*

OMISSIONS FROM CHART

Certain information has been omitted from this chart. For details see the larger scale nautical charts and relevant nautical publications.

*Note for chart Aus 170.*

To accompany Australian Notice to Mariners 82/2013

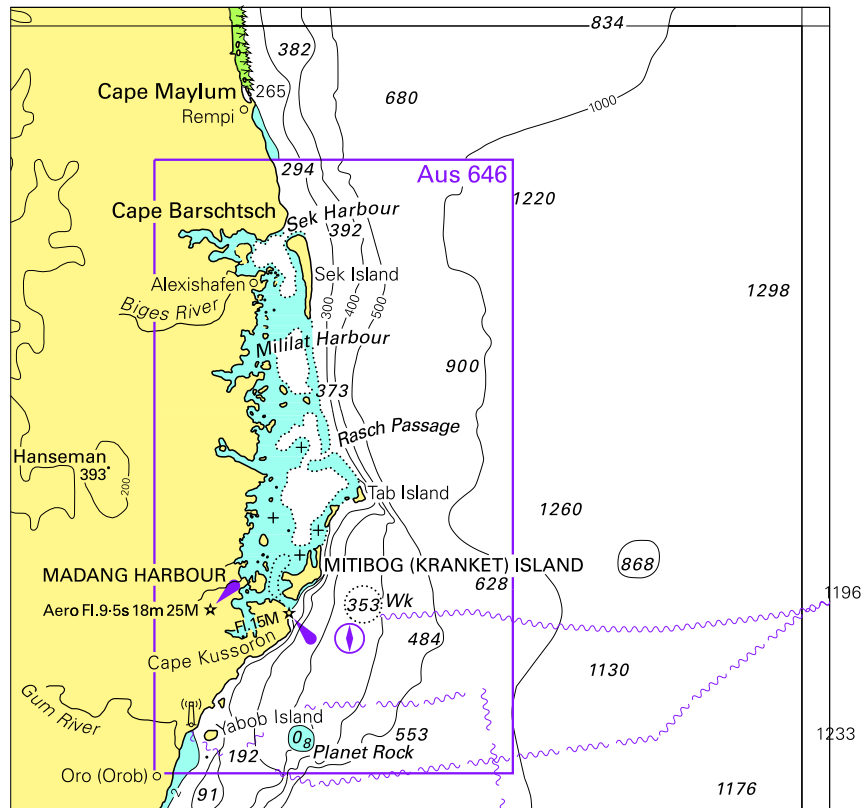


© Commonwealth of Australia 2013

Block for chart Aus 237

(81.8 x 135.1mm)

To accompany Australian Notice to Mariners 85/2013

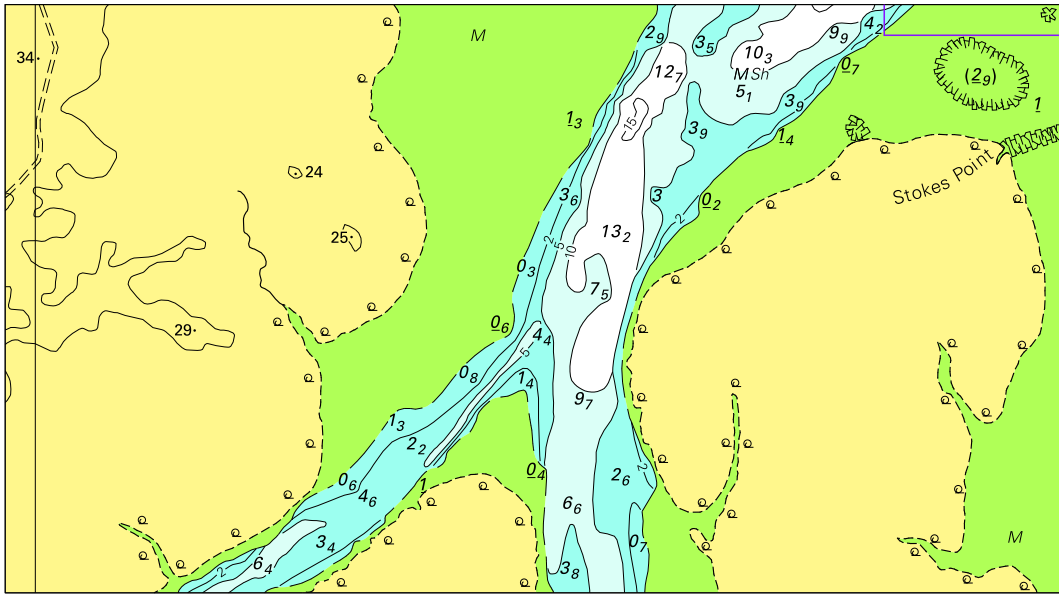


Block for chart Aus 387

© Commonwealth of Australia 2013

(108.3 x 106.2mm)

To accompany Australian Notice to Mariners 86/2013

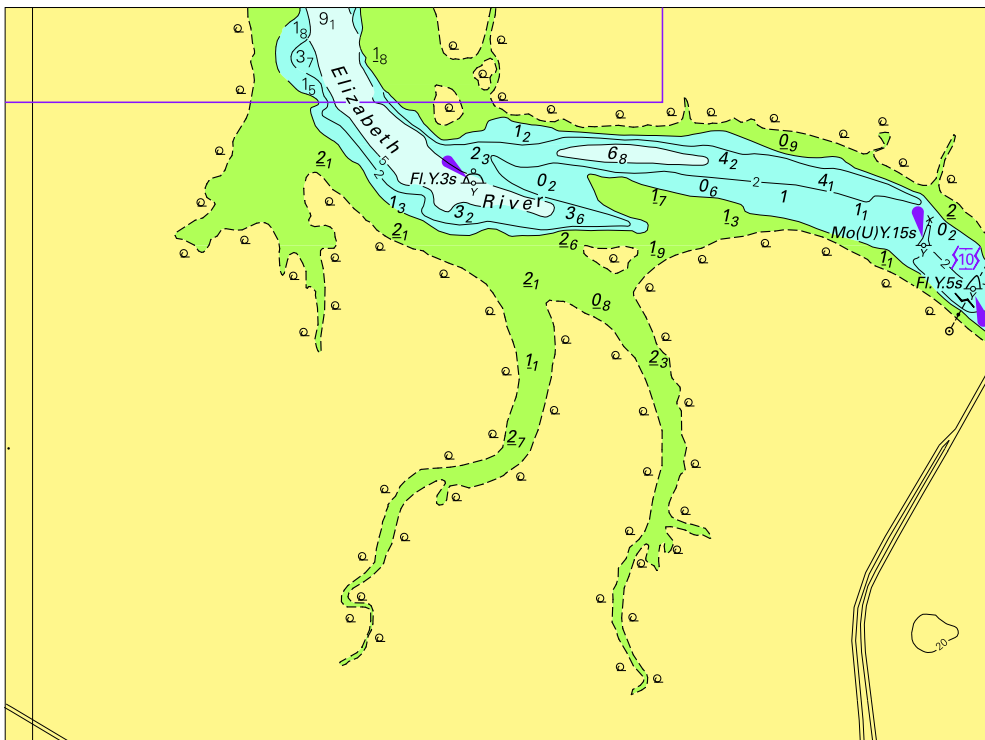


Block A for chart Aus 26

© Commonwealth of Australia 2013

(140 x 77mm)

To accompany Australian Notice to Mariners 86/2013

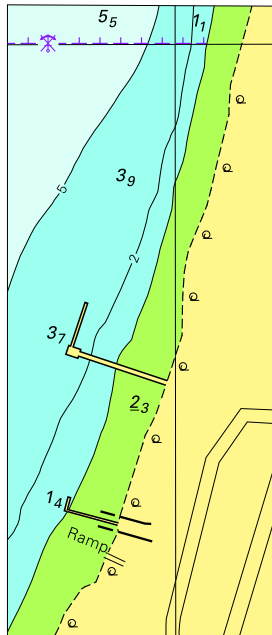


Block B for chart Aus 26

© Commonwealth of Australia 2013

(130 x 97mm)

To accompany Australian Notice to Mariners 87/2013

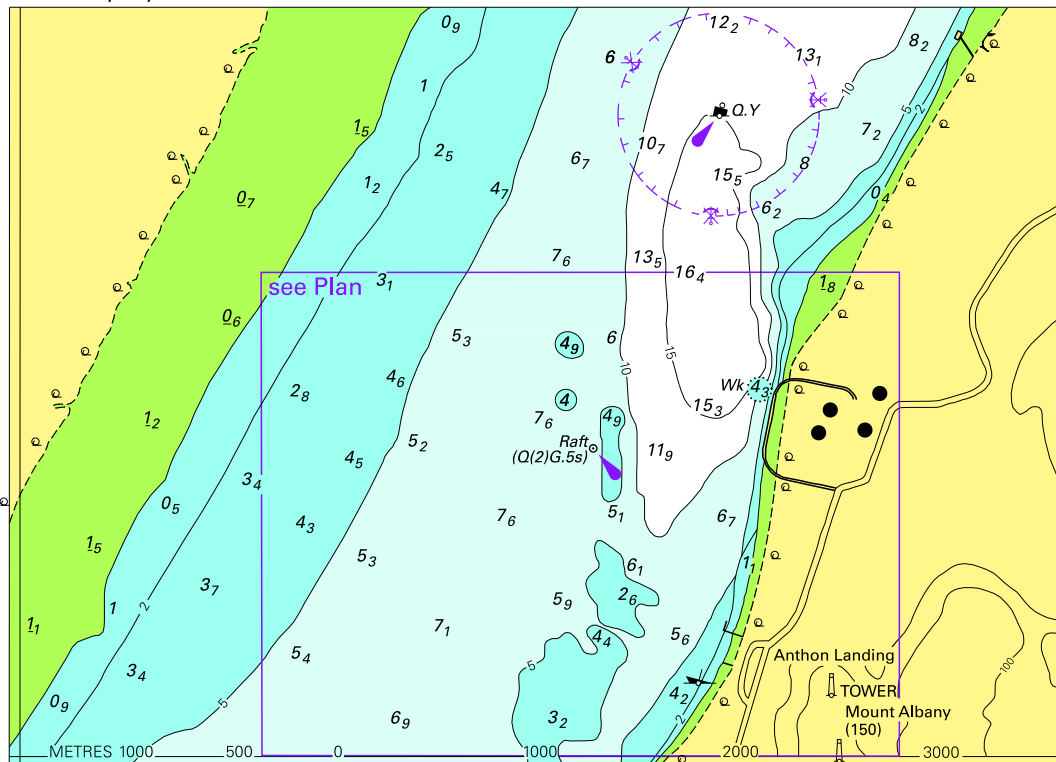


© Commonwealth of Australia 2013

**Block A for Aus 32**

(35.8 x 83.5mm)

To accompany Australian Notice to Mariners 87/2013

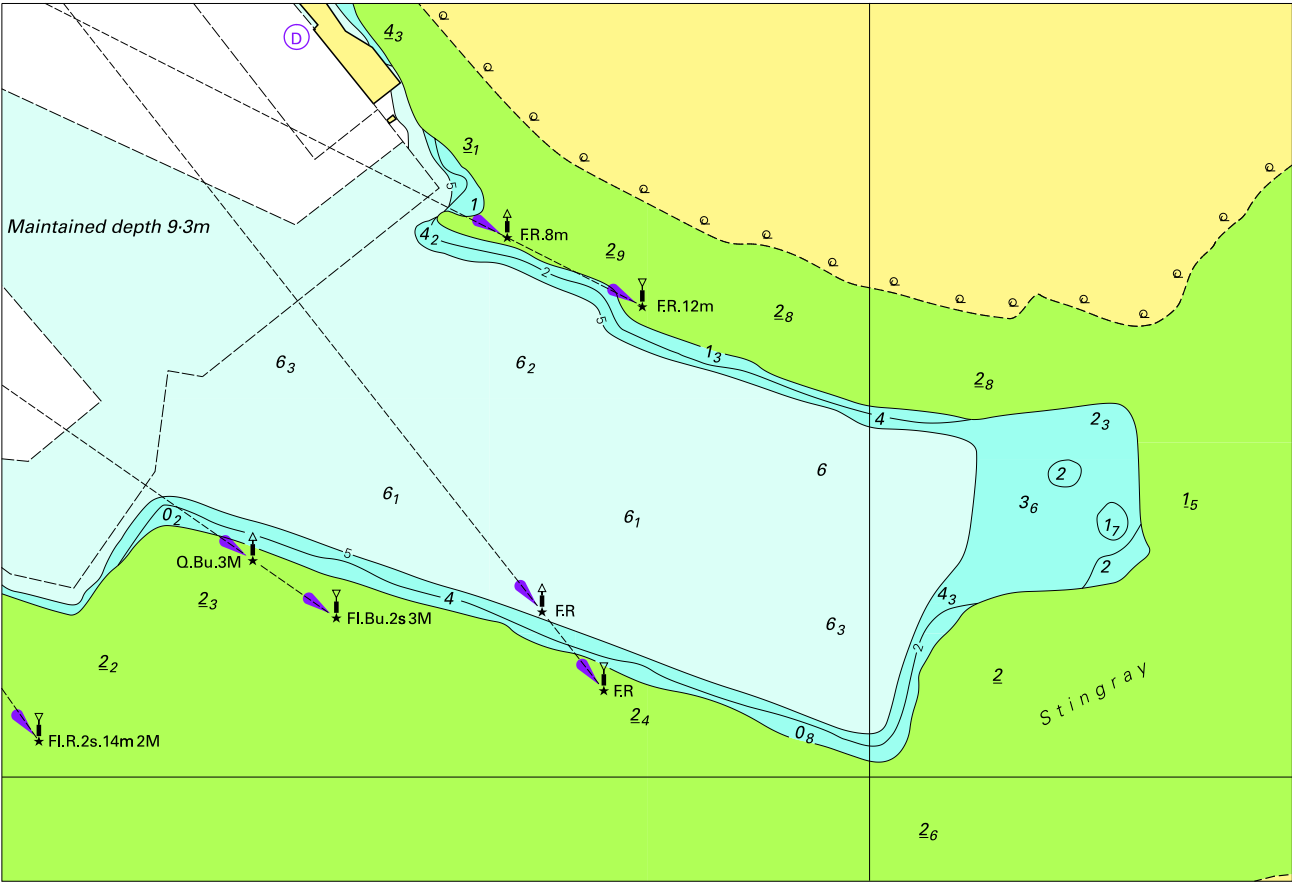


**Block B for Aus 32**

© Commonwealth of Australia 2013

100 x 138.9mm

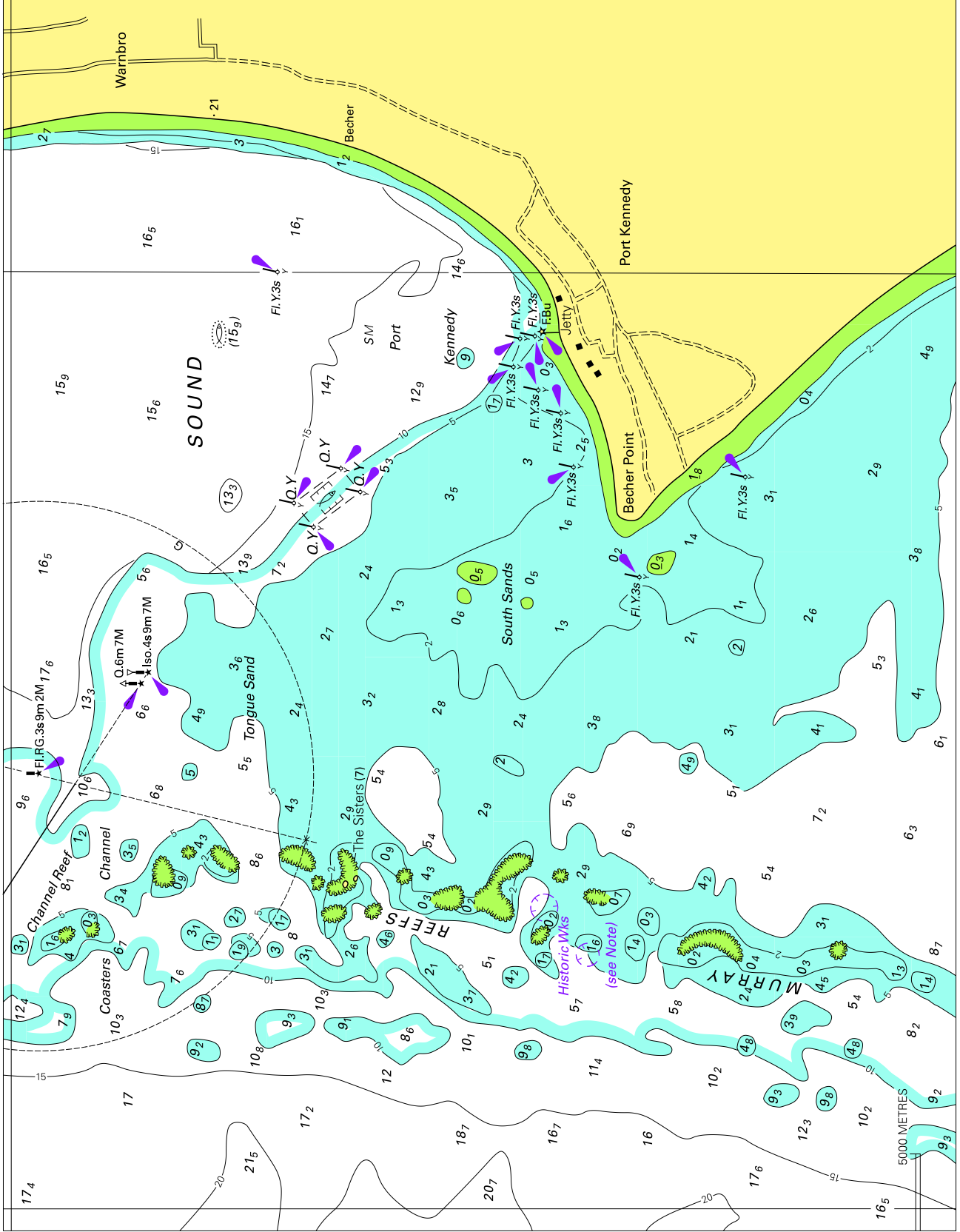
To accompany Australian Notice to Mariners 90/2013



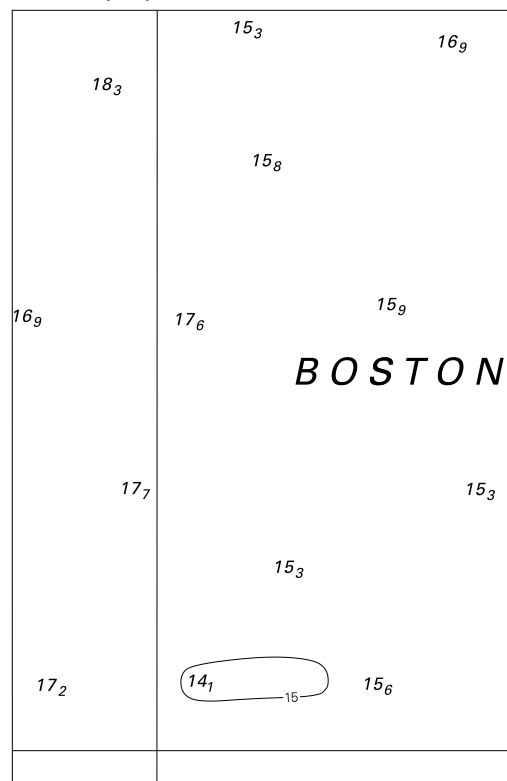
Block for chart Aus 54

© Commonwealth of Australia 2013

(170.7 x 116.0mm)



To accompany Australian Notice to Mariners 95/2013



© Commonwealth of Australia 2013

**Block for Aus 133**

(66.7 x 102.6mm)