

To accompany Australian Notice to Mariners 803/2013

HISTORIC WRECK

The site of an historic wreck is protected from unauthorised interference. For details see Seafarers Handbook for Australian Waters AHP 20.

Note for chart Aus 717

To accompany Australian Notice to Mariners 803/2013

HISTORIC WRECK

The site of an historic wreck is protected from unauthorised interference. For details see Seafarers Handbook for Australian Waters AHP 20.

Note for chart Aus 718

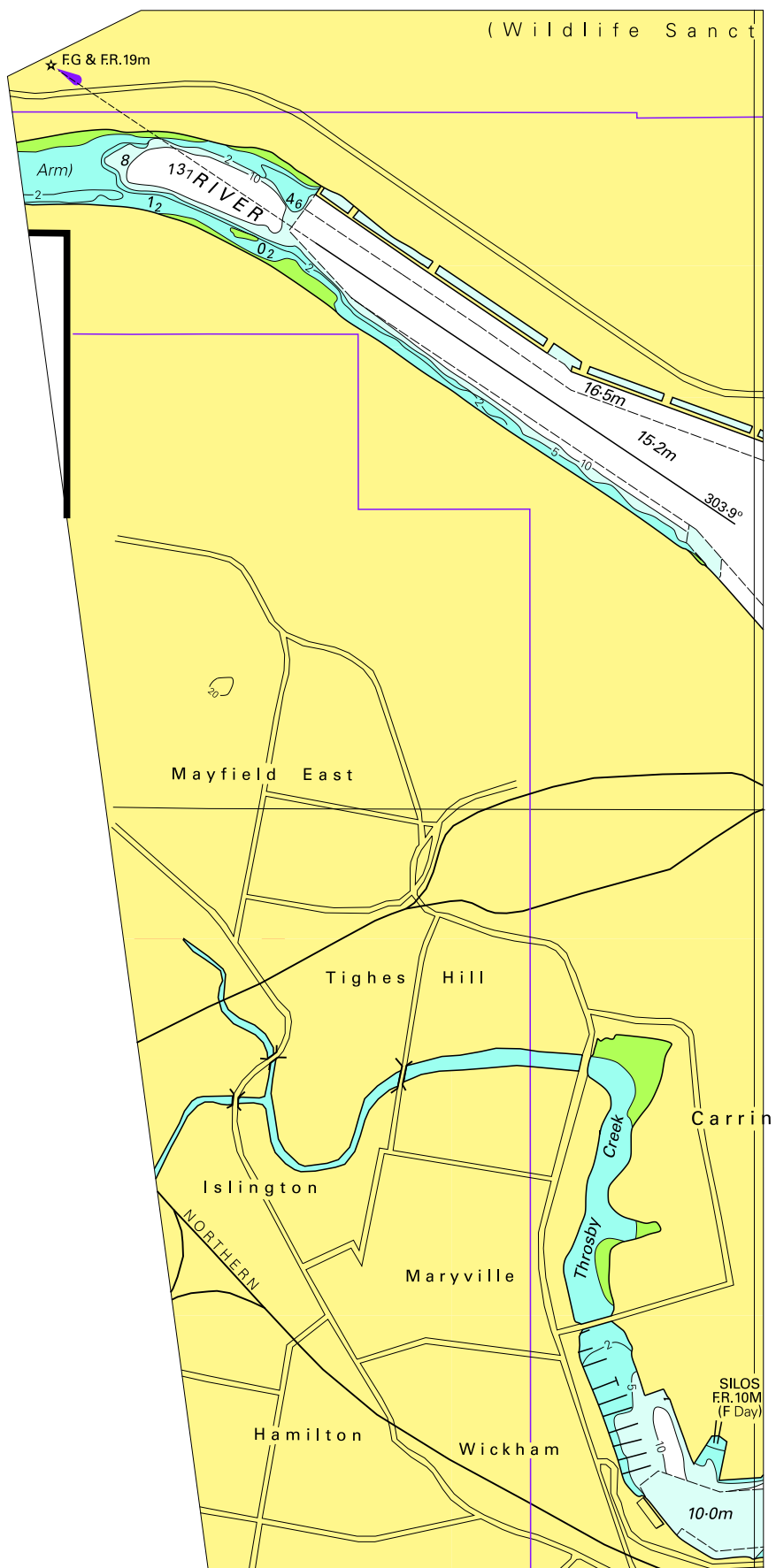
To accompany Australian Notice to Mariners 806/2013

UNEXPLODED ORDNANCE (UXO)

The area is safe for surface navigation only; it is not safe for anchoring, trawling or seabed activities. For details see Australian Notice to Mariners No 12.

Note for chart Aus 4725

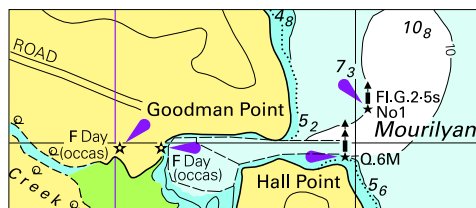
To accompany Australian Notice to Mariners 789/2013



© Commonwealth of Australia 2013

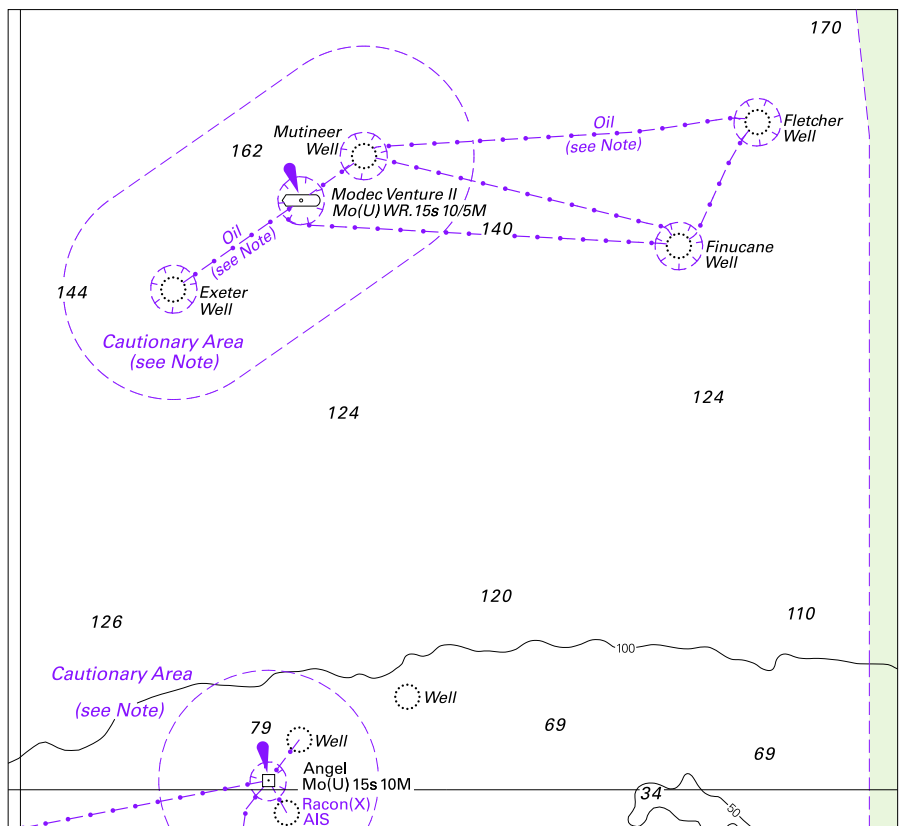
(220.2 × 116.7mm)

To accompany Australian Notice to Mariners 798/2013



© Commonwealth of Australia 2013
Block B for chart Aus 258 (61.9 x 26.7mm)

To accompany Australian Notice to Mariners 805/2013

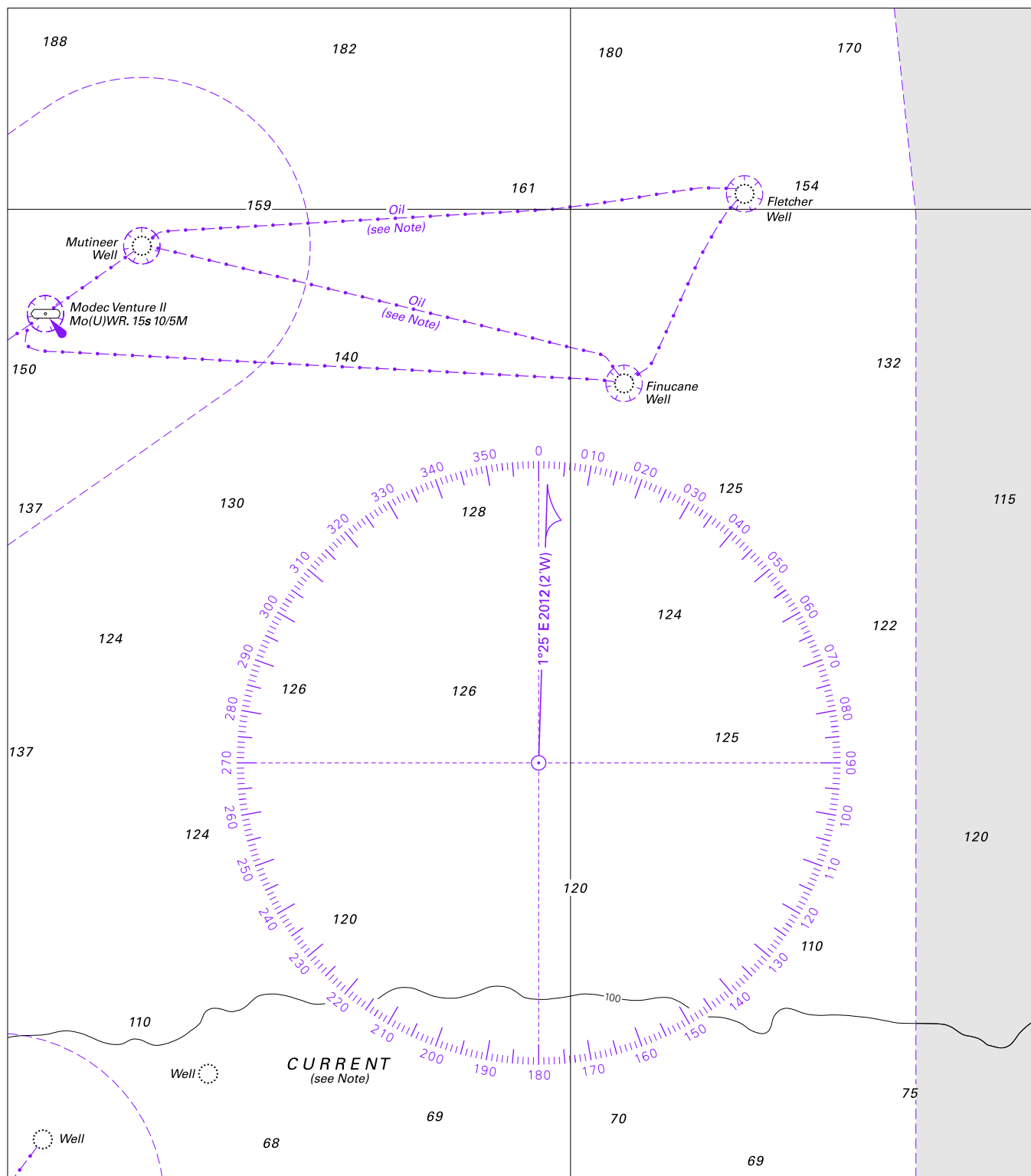


Block for chart Aus 327

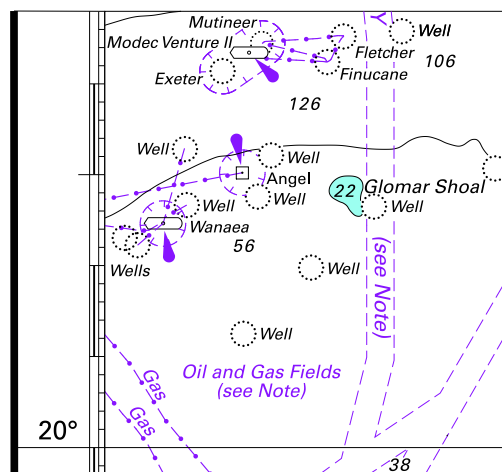
© Commonwealth of Australia 2013

(117.6 x 108.3mm)

To accompany Australian Notice to Mariners 805/2013



To accompany Australian Notice to Mariners 805/2013

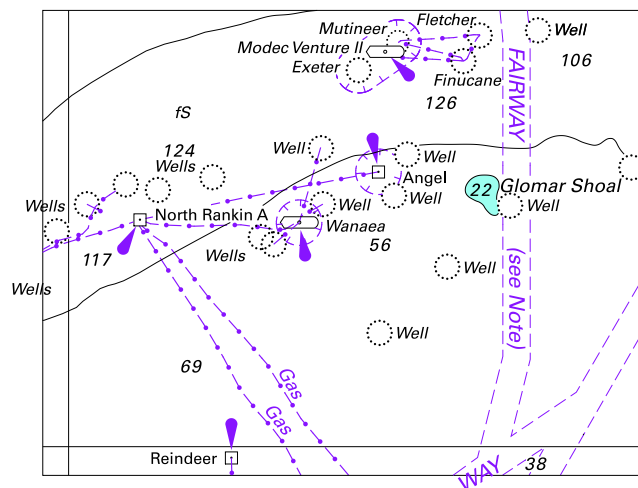


Block for chart Aus 4722

(65.9 x 61.5mm)

© Commonwealth of Australia 2013

To accompany Australian Notice to Mariners 805/2013

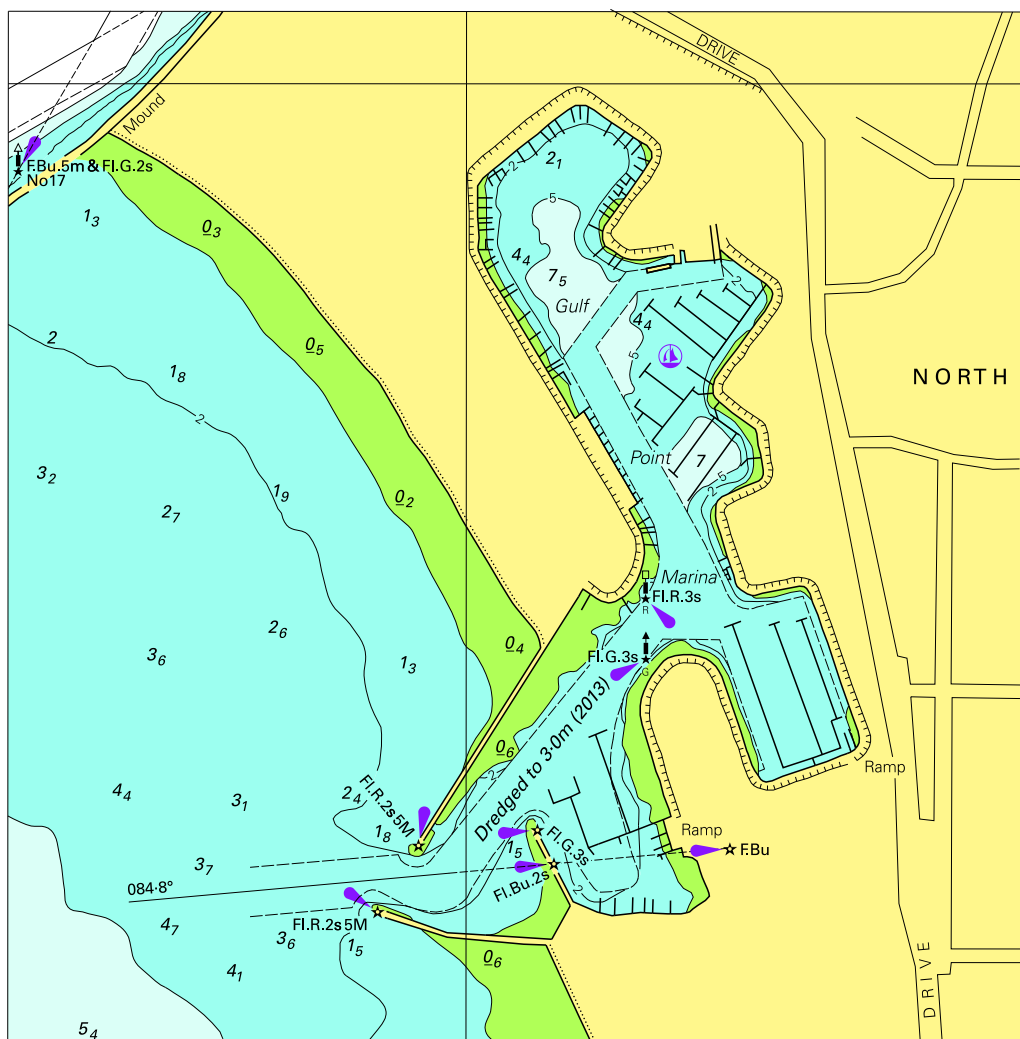


Block for chart Aus 4723

(80.2 x 61.5mm)

© Commonwealth of Australia 2013

To accompany Australian Notice to Mariners 807/2013

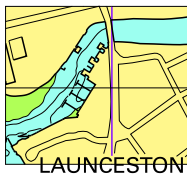


Block for Aus 137

© Commonwealth of Australia 2013

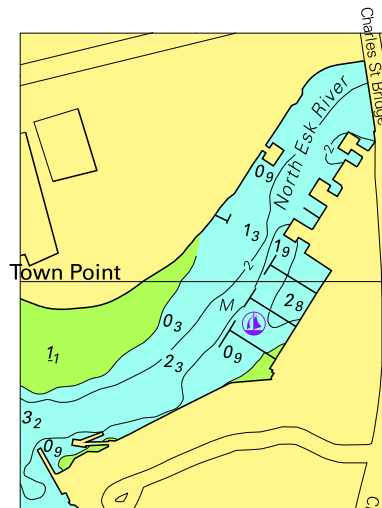
(134.7 x 136.4mm)

To accompany Australian Notice to Mariners 811/2013



© Commonwealth of Australia 2013
Block B for chart Aus 168 (24.3 x 20.9mm)

To accompany Australian Notice to Mariners 811/2013



© Commonwealth of Australia 2013
Block A for chart Aus 168 (48.4 x 63.0mm)