

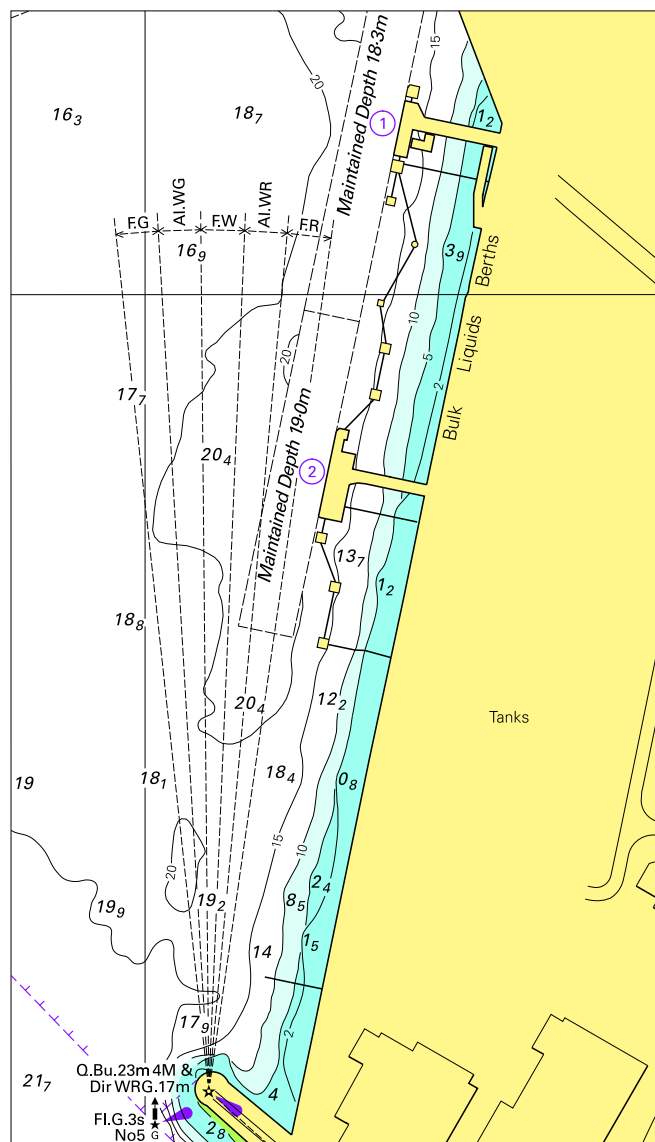
*To accompany Australian Notice to Mariners 753/2013*

RECOMMENDED TRACKS

This track has been surveyed in accordance with the IMO/IHO standards for recommended tracks. The attention of vessels meeting on recommended tracks is drawn to the International Regulations for Preventing Collisions at Sea (1972), particularly Rules 18 and 28 regarding vessels constrained by their draught.

*Note for chart Aus 62*

To accompany Australian Notice to Mariners 741/2013

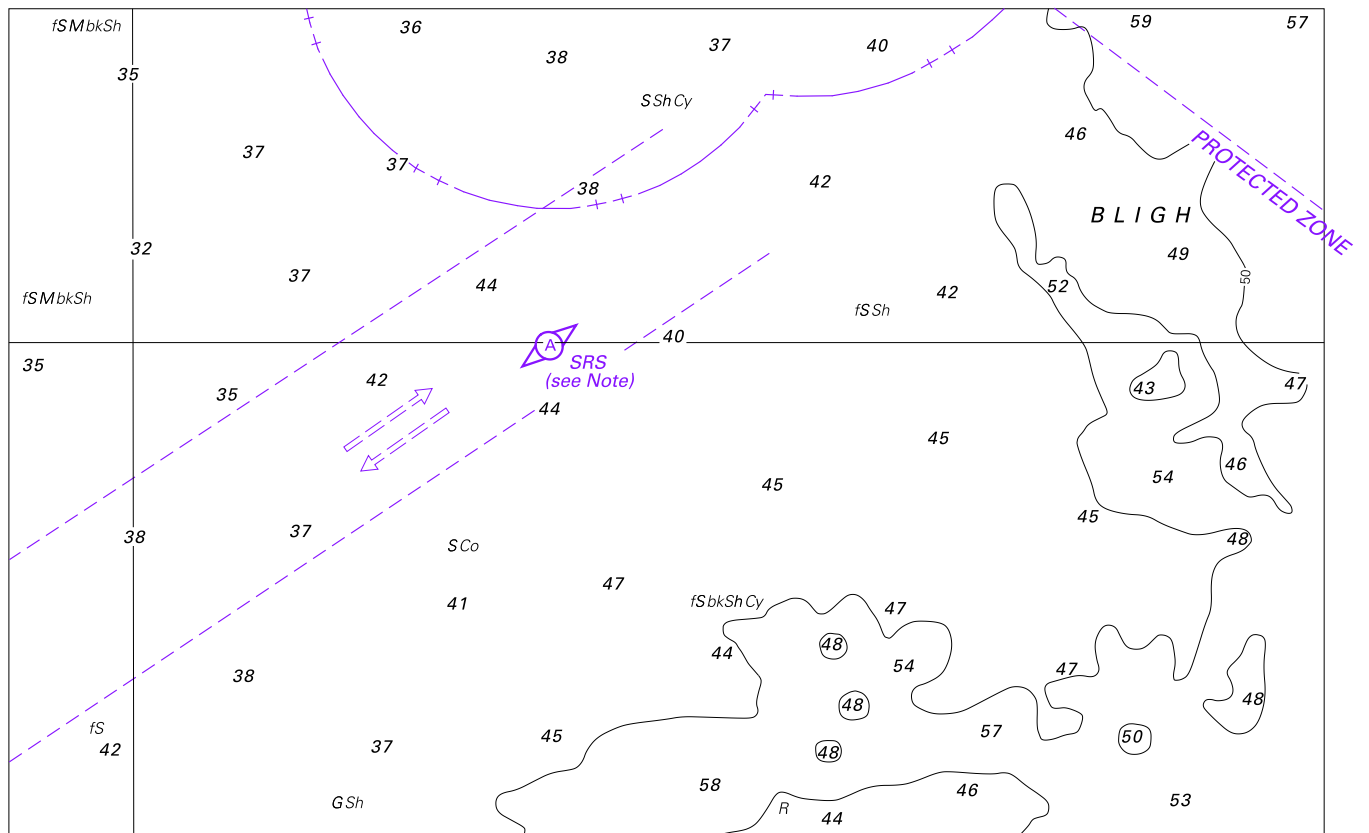


© Commonwealth of Australia 2013

Block for chart Aus 196

(86-8 x 150-08mm)

To accompany Australian Notice to Mariners 746/2013



Block for chart Aus 840

© Commonwealth of Australia 2013

(173.9 x 109.3mm)