

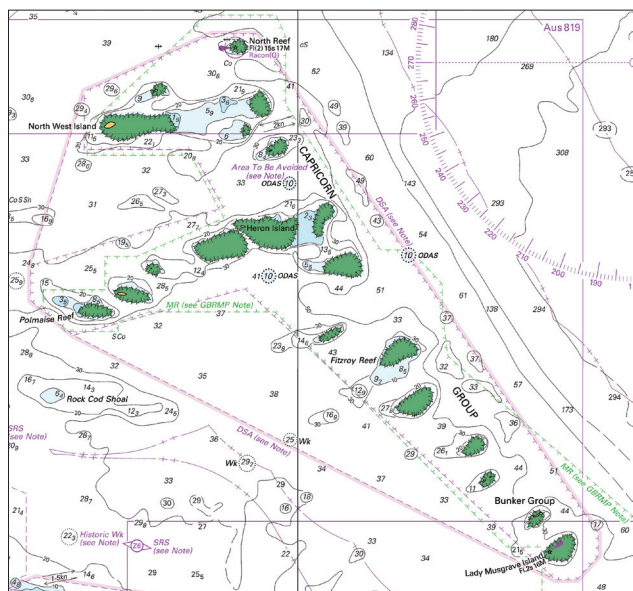
3. Incidents involving submarine cables should be reported to the Australian Federal Police Canberra Operations Centre.
4. Claims for compensation should be sent to the owner of the submarine cable involved. Contact details for cable owners can be found on the ACMA website.

|                 |                                                                          |
|-----------------|--------------------------------------------------------------------------|
| Federal Police  | +61 2 6218 8888                                                          |
| Telephone:      |                                                                          |
| ACMA's Website: | <a href="http://www.acma.gov.au/subcables">www.acma.gov.au/subcables</a> |

## 8.21 Areas to be Avoided

1. An "Area to be Avoided" is a routing measure comprising an area within defined limits in which either navigation is particularly hazardous or where it is exceptionally important to avoid casualties and which should be avoided by all ships, or certain classes of ships.
2. There are three areas declared:
  - Great Barrier Reef - all ships in excess of 500 gross tonnage should avoid the area (chart Aus 819)

### The Great Barrier Reef "Area to be Avoided"



- Bass Strait - all ships in excess of 200 gross tonnage should avoid the area (chart Aus 357)
- Ningaloo Reef - all ships over 150 gross tonnage and by ships engaged in towing operations should avoid the area (chart Aus 329 and Marine Notice 05/2013).

3. More information can also be found in the IMO Ships' Routing Guide which can be purchased online on the IMO website.

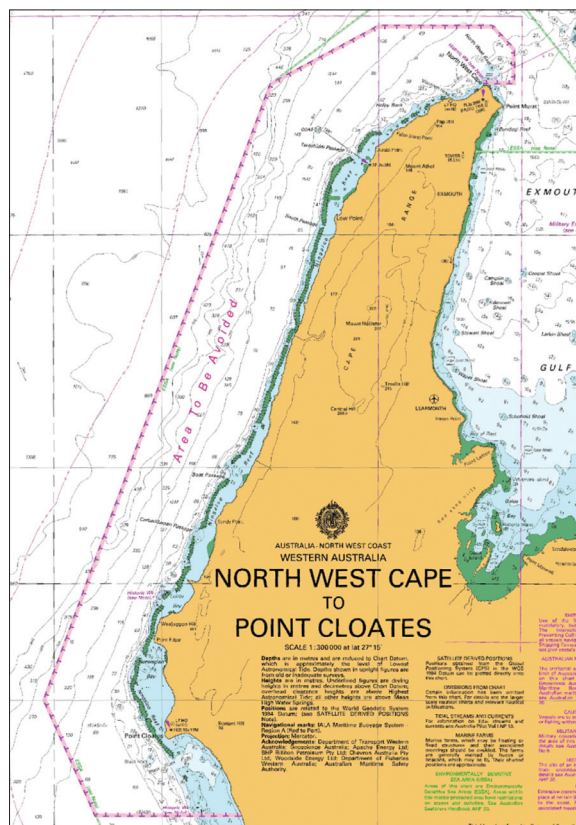
|          |                                              |
|----------|----------------------------------------------|
| Website: | <a href="http://www.imo.org">www.imo.org</a> |
|----------|----------------------------------------------|

## 8.22 Accident and Incident Reporting

### 8.22.1 Application

1. Australian law requires vessels registered in Australia and foreign flagged vessels in Australian waters or on a voyage to or from an Australian port to report a range of accidents and incidents. Some specific requirements are listed below. Any

### Ningaloo Reef "Area to be Avoided"



|      |                                                                    |
|------|--------------------------------------------------------------------|
| QLD: | <a href="http://www.justice.qld.gov.au">www.justice.qld.gov.au</a> |
|------|--------------------------------------------------------------------|

Page 9

## 2.5.5 Department for Planning, Transport and Infrastructure - South Australia

1. A range of marine services is provided by various divisions within the Department for Planning, Transport and Infrastructure (DPTI). These include:

- marine safety, including policy development, licensing, compliance, accident reporting, investigations, marine safety equipment, Notices to Mariners, recreational boating and accreditation
- commercial marine services - emergency response, navigation, qualifications and commercial vessel survey
- marine facilities - maintenance of departmental marine assets including navigation aids
- commercial ports and shipping policy advice
- marine transport policy advice.

|            |                                                                                                  |
|------------|--------------------------------------------------------------------------------------------------|
| Enquiries: | 1300 360 067 / +61 8 8343 2222                                                                   |
| email:     | <a href="mailto:dpti.enquiriesadministrator@sa.gov.au">dpti.enquiriesadministrator@sa.gov.au</a> |
| Website:   | <a href="http://www.dpti.sa.gov.au">www.dpti.sa.gov.au</a>                                       |

Page 25

|                                          |                                                                            |
|------------------------------------------|----------------------------------------------------------------------------|
| Australian Volunteer Coast Guard:        | <a href="http://www.coastguard.com.au">www.coastguard.com.au</a>           |
| Marine Rescue NSW:                       | <a href="http://www.marinerescuensw.com.au">www.marinerescuensw.com.au</a> |
| Volunteer Marine Rescue Association QLD: | <a href="http://www.marinerescueqld.org.au">www.marinerescueqld.org.au</a> |
| Volunteer Marine Rescue WA:              | <a href="http://www.vmrwa.org.au">www.vmrwa.org.au</a>                     |
| NT Emergency Services:                   | <a href="http://www.nt.gov.au">www.nt.gov.au</a>                           |
| Volunteer Marine Rescue Tasmania:        | <a href="http://www.slst.asn.au">www.slst.asn.au</a>                       |
| SA Sea Rescue Squadron:                  | <a href="http://www.sasearescue.org.au">www.sasearescue.org.au</a>         |

Page 26

## QUEENSLAND

QLD Department of Environment and Heritage Protection

Telephone: 13 QGOV (13 74 68) Aust only  
+61 7 3405 0970  
email: [info@ehp.qld.gov.au](mailto:info@ehp.qld.gov.au)  
Website: [www.ehp.qld.gov.au](http://www.ehp.qld.gov.au)

Page 38

## QUEENSLAND

Department of Environment and Heritage Protection

Telephone: 1300 130 372 (Australia only)  
email: [info@ehp.qld.gov.au](mailto:info@ehp.qld.gov.au)  
Website: [www.ehp.qld.gov.au](http://www.ehp.qld.gov.au)

Page 68

## VICTORIA

Department of Environment and Primary Industries

Telephone: 136 186 (Australia only)  
+61 3 5332 5000  
Website: [www.depi.vic.gov.au](http://www.depi.vic.gov.au)

Parks Victoria

Telephone: 13 1963 (Australia only)  
+61 3 8627 4699  
email: [info@parks.vic.gov.au](mailto:info@parks.vic.gov.au)  
Website: [www.parkweb.vic.gov.au](http://www.parkweb.vic.gov.au)

Page 69

Website: [www.environment.gov.au/epbc/approval.html](http://www.environment.gov.au/epbc/approval.html)

Page 94

## Port Kembla, NSW (34° 28'S, 150° 54'E)

UN/LOCODE: AU PKL

|                          |                                                                                                                                                            |
|--------------------------|------------------------------------------------------------------------------------------------------------------------------------------------------------|
| Charts:                  | Aus 195, 194                                                                                                                                               |
| Security Regulated Port: | Yes                                                                                                                                                        |
| Port Authority:          | Port Kembla Port Corporation                                                                                                                               |
| Website:                 | <a href="http://www.portkembla.com.au">www.portkembla.com.au</a>                                                                                           |
| email:                   | <a href="mailto:enquiries@portkembla.com.au">enquiries@portkembla.com.au</a>                                                                               |
| Telephone:               | +61 2 4575 0100                                                                                                                                            |
| Vessel Traffic Service:  |                                                                                                                                                            |
| Call:                    | "Port Kembla Harbour"                                                                                                                                      |
| Telephone:               | +61 2 4274 4571 / +61 2 4275 0159                                                                                                                          |
| Fax:                     | +61 2 4274 6147                                                                                                                                            |
| email:                   | <a href="mailto:sigstn@kemblaport.com.au">sigstn@kemblaport.com.au</a>                                                                                     |
| Pilotage:                | Compulsory                                                                                                                                                 |
| Pilot boarding Grounds:  | (Inner) 34° 25.15'S, 150° 56.85'E<br>(Outer) 34° 24.23'S, 150° 57.62'E                                                                                     |
| Communication            | "Port Kembla Harbour"                                                                                                                                      |
| Call up, emergencies:    | VHF Ch 16                                                                                                                                                  |
| Port Operations:         | VHF 06, 08, 11                                                                                                                                             |
| Notice of ETA:           | 48 hours notification required - booking must be confirmed 24 hours in advance                                                                             |
| For more information:    | <a href="http://www.kemblaport.com.au/page/port-operations/port-information-guide/">www.kemblaport.com.au/page/port-operations/port-information-guide/</a> |

Page 215

Website: [www.hydro.gov.au/webapps/jsp/agents/agents-list.jsp](http://www.hydro.gov.au/webapps/jsp/agents/agents-list.jsp)

Page 244

*To accompany Australian Notice to Mariners 583/2013*

AREA TO BE AVOIDED

The Area To Be Avoided has been adopted by IMO and should not be entered by ships over 150 gross tonnage and ships engaged in towing operations regardless of size.

*Note for chart Aus 72.*

*To accompany Australian Notice to Mariners 583/2013*

AREA TO BE AVOIDED

The Area To Be Avoided has been adopted by IMO and should not be entered by ships over 150 gross tonnage and ships engaged in towing operations regardless of size.

*Note for chart Aus 328.*

*To accompany Australian Notice to Mariners 583/2013*

AREA TO BE AVOIDED

The Area To Be Avoided has been adopted by IMO and should not be entered by ships over 150 gross tonnage and ships engaged in towing operations regardless of size.

*Note for chart Aus 329.*

*To accompany Australian Notice to Mariners 583/2013*

AREA TO BE AVOIDED

The Area To Be Avoided has been adopted by IMO and should not be entered by ships over 150 gross tonnage and ships engaged in towing operations regardless of size.

*Note for chart Aus 744.*

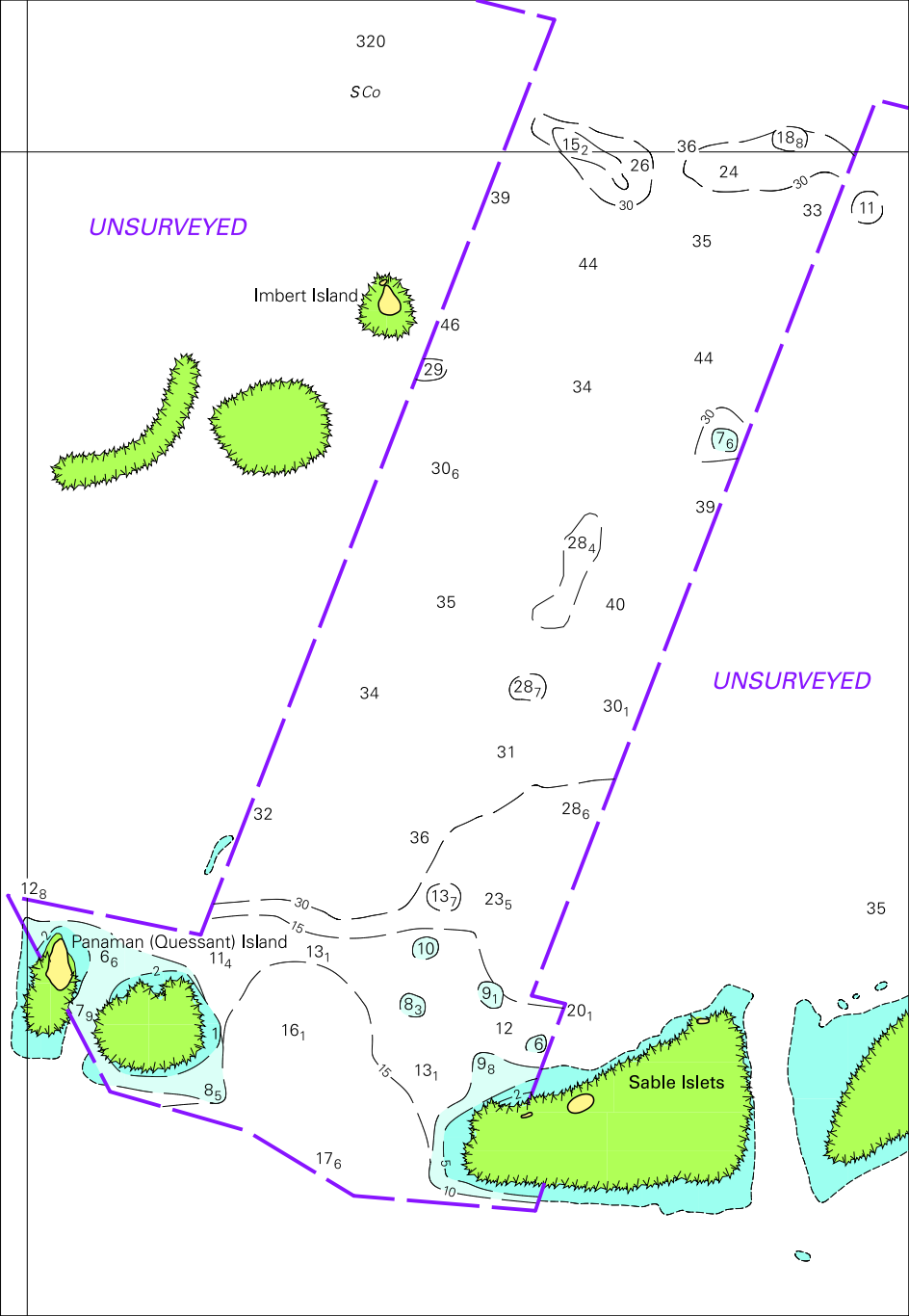
*To accompany Australian Notice to Mariners 583/2013*

AREA TO BE AVOIDED

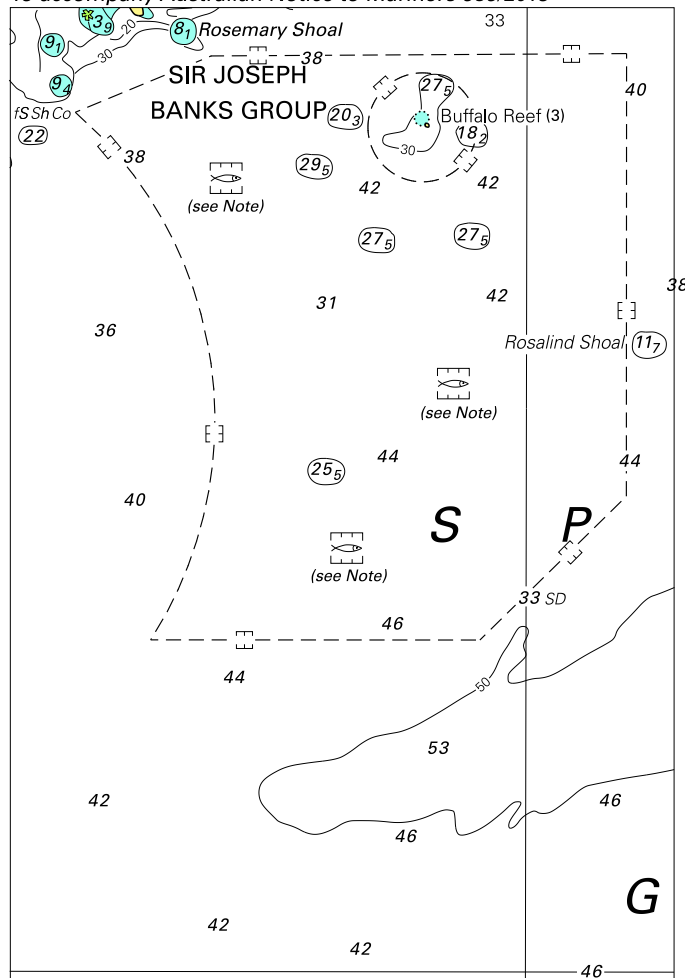
The Area To Be Avoided has been adopted by IMO and should not be entered by ships over 150 gross tonnage and ships engaged in towing operations regardless of size.

*Note for chart Aus 745.*

To accompany Australian Notice to Mariners 578/2013



To accompany Australian Notice to Mariners 585/2013

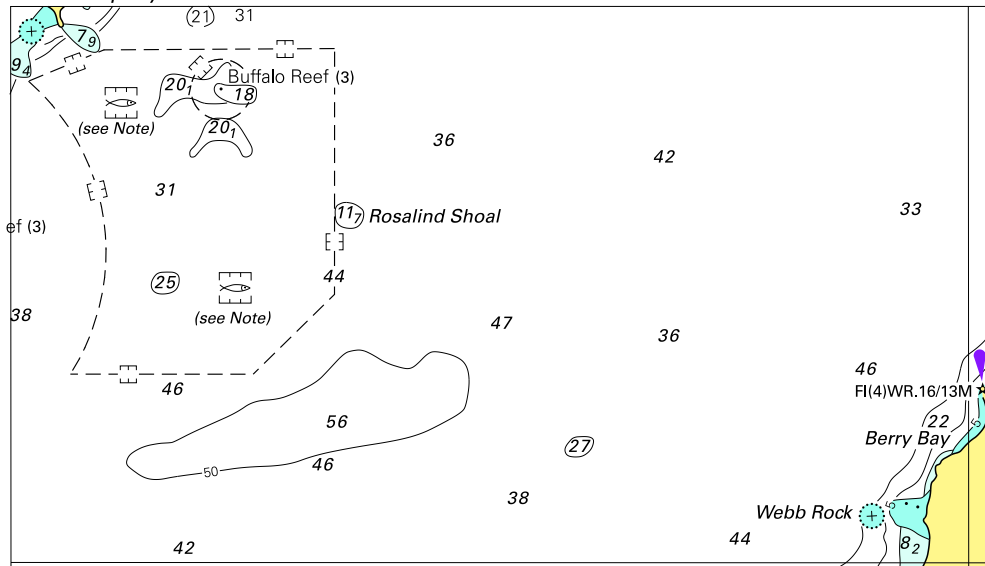


© Commonwealth of Australia 2013

Block for chart Aus 343

(87.8 x 128.6mm)

To accompany Australian Notice to Mariners 585/2013



Block for chart Aus 485

© Commonwealth of Australia 2013

(130.0 x 74.4mm)

To accompany Australian Notice to Mariners 585/2013

