



25 March 2011

Edition 6

Australian Notices to Mariners are the authority for correcting Australian Charts and Publications

# AUSTRALIAN NOTICES TO MARINERS

Notices 284 – 337



Published fortnightly by the Australian Hydrographic Service

Commodore R. NAIRN RAN  
*Hydrographer of Australia*

---

## SECTIONS.

- I. **Australian Notices to Mariners, including blocks and notes.**
- II. **Hydrographic Reports.**
- III. **Navigational Warnings.**

## SUPPLEMENTS.

- I. **Tracings**
- II. **Cumulative List of Australian Notices to Mariners.**
- III. **Temporary and Preliminary Notices in force.**
- IV. **Amendments to Admiralty List of Lights and Fog Signals (Vol K),  
Radio Signals (NP 281(2), 282, 283(2), 285, 286(4)) and Sailing  
Directions (NP 9, 13, 14, 15, 33, 34, 35, 36, 39, 44, 51, 60, 61, 62, 100, 136).**

---

© Commonwealth of Australia 2011

This work is copyright. Apart from any use permitted under the Copyright Act 1968, no part may be reproduced by any process, adapted, communicated or commercially exploited without prior written permission from The Commonwealth represented by the Australian Hydrographic Service.

## IMPORTANT NOTICE

This edition of Notices to Mariners includes all significant information affecting AHS products which the AHS has become aware of since the last edition. All reasonable efforts have been made to ensure the accuracy and completeness of the information, including third party information, on which these updates are based. The AHS regards third parties from which it receives information as reliable, however the AHS cannot verify all such information and errors may therefore exist. The AHS does not accept liability for errors in third party information.

---

## GENERAL INSTRUCTIONS

The substance of these notices should be inserted on the charts affected.

Bearings are referred to the true compass and are reckoned clockwise from North; those relating to lights are given as seen by an observer from seaward. Positions quoted in permanent notices relate to the horizontal datum for the chart(s). When preliminary or temporary notices affect multiple charts, positions will be provided in relation to only one horizontal datum and that datum will be specified. When the multiple charts do not have a common horizontal datum, mariners will be required to adjust the position(s) for those charts not on the specified datum. The range quoted for a light is its nominal range. Depths are with reference to the chart datum of each chart. Heights are above mean high water springs or mean higher high water, as appropriate.

The capital letter (P) or (T) after the number of any notice denotes a preliminary or temporary notice respectively, which are contained separately at the end of the permanent notices. A star (\*) adjacent to the number of a notice indicates that the notice is based on original information.

---

## REPORTING OF DANGERS

Mariners are particularly requested to notify the AUSTRALIAN HYDROGRAPHIC SERVICE, Locked Bag 8801 Wollongong, NSW 2500 (Fax 02-4223 6599, e-mail [Hydro.NTM@defence.gov.au](mailto:Hydro.NTM@defence.gov.au) or, alternatively by filling in and submitting the [Hydrographic Notes](#) forms located on the web site – [www.hydro.gov.au](http://www.hydro.gov.au)), immediately on the discovery of new dangers or suspected dangers to navigation. For changes or defects in aids to navigation notify AusSAR (Fax 02-6230 6868 or email [rccaus@amsa.gov.au](mailto:rccaus@amsa.gov.au)).

---

## AUTHORISED USE

Copies of Australian notices are available free of charge from the Australian Hydrographic Service (AHS) website ([www.hydro.gov.au](http://www.hydro.gov.au)) and through the eNotices (email) service ([www.hydro.gov.au/enotices/enotices.htm](http://www.hydro.gov.au/enotices/enotices.htm)).

Individual Notices may be copied for the purpose of inserting Notice substance on official charts and publications. Paper copies may be printed by chart agents and distributed to customers on a cost recovery basis. Participating chart agents are listed on the AHS website as providing a 'Paper Notices to Mariners' service ([www.hydro.gov.au/prodserv/distributors/distributors.htm](http://www.hydro.gov.au/prodserv/distributors/distributors.htm)). Copies of the notices may not be sold for profit without prior written agreement.

# NUMERICAL INDEX OF NOTICES TO MARINERS

## Edition No 6

Notices	Aus Chart, INT Chart, ENC Cell, AHP
284.....	Aus 48, 179, 364, 516, 654, 814
285.....	Revised prices
286.....	Aus 198, 199
287.....	Aus 813
288.....	Aus 236
289.....	Aus 237, 238
290.....	Aus 235
291.....	Aus 816
292.....	Aus 616
293.....	Aus 515, 516, 4621, INT 621, AX 4621F
294.....	Aus 523, 653
295.....	Aus 397
296.....	Aus 554
297.....	Aus 718
298.....	Aus 61
299.....	Aus 742
300.....	Aus 63, 64, 328, 743
301.....	Aus 114
302.....	Aus 126, 342, 343, 346, 780, AX 0343E
303.....	Aus 139, 780, 781
304.....	Aus 402, 449, 4074, INT 74, 9035
305.....	Aus 601, INT 9021
306.....	Aus 177, 792
307.....	Aus 169, 766
308.....	Aus 151
309.....	Aus 357, 487, 4644, INT 644
310(T).....	Aus 489, 4643, INT 643
311(P).....	Aus 197, 204, 809, AX 0809E
312(T).....	Aus 235
313(T).....	Aus 236
314(T).....	Aus 235, 236, 237, 238
315(T).....	Aus 245
316(T).....	Aus 249, 250, AX 0249E
317(T).....	Aus 252, 253, 824, 825
318(T).....	Aus 252, 253, 254
319(T).....	Aus 827
320(T).....	Aus 259, 267
321(T).....	Aus 258
322(T).....	Aus 377, 379, 505, 621, AX 60377
323(T).....	Aus 296, 700
324(T).....	Aus 22, 23, 309, 722, AX 0309F, 72309, 72722
325(T).....	Aus 315, AX 0315F
326(P).....	Aus 54
327(T).....	Aus 327, 741, 4722, 4723, INT 722, 723, AX 4722F
328(T).....	Aus 63, 328, 743, 4723, 4725, INT 723, 725
329(P).....	Aus 112, AX 63112
330(T).....	Aus 130, 137, 138, 781
331(T).....	Aus 172
332(T).....	Aus 169
333(T).....	Aus 179, 800
334(T).....	Aus 349, 487, 788, 4644, 4728, INT 644, 728
335(T).....	Aus 153, 157
336(T).....	Aus 154
337(T).....	Aus 154

[illegible]

**284 AUSTRALIA - Product**

Australian Hydrographic Service (AA521463, AA521910)

**New Chart**

<i>Chart</i>	<i>Published</i>	<i>Title and description of amendments</i>	<i>Scale</i>	<i>Index Chart</i>	<i>Price</i>
Aus 48	25/3/2011	Australia - North West Coast - Indian Ocean - Mermaid Reef 16° 56'.50 S - 17° 14'.20 S 119° 30'.40 E - 119° 44'.00 E Plan: Lagoon Entrance 17° 03'.40 S - 17° 04'.75 S 119° 37'.87 E - 119° 39'.12 E <i>New chart providing improved coverage of Mermaid Reef.</i>	1:50 000    1:12 500	Aus 5000	\$35.00

**New Edition**

<i>Chart</i>	<i>Published</i>	<i>Title and description of amendments</i>	<i>Scale</i>	<i>Index Chart</i>	<i>Price</i>
Aus 179	25/3/2011	Australia - Tasmania - Plans in Tasmania (Sheet 1) Plans: Franklin Sound 40° 09'.92 S - 40° 25'.50 S 147° 52'.82 E - 148° 27'.40 E Waterhouse Passage 40° 45'.97 S - 40° 51'.40 S 147° 34'.27 E - 147° 41'.71 E Foster Inlet 40° 43'.99 S - 40° 46'.71 S 147° 54'.88 E - 147° 57'.88 E Approaches to Lady Barron 40° 12'.40 S - 40° 15'.77 S 148° 10'.93 E - 148° 17'.88 E Whitemark 40° 06'.61 S - 40° 07'.70 S 147° 59'.24 E - 148° 01'.00 E <i>New edition including latest bathymetric surveys.</i>	   1:75 000   1:50 000   1:25 000   1:15 000   1:10 000	Aus 5001	\$35.00

**New Chart to be published shortly**

<i>Chart</i>	<i>Title</i>	<i>Scale</i>	<i>Expected Publication Date</i>
Aus 814	Australia - East Coast - Queensland - Point Danger to Cape Moreton	1:150 000	8 April 2011

**Chart to be permanently withdrawn without replacement**

<i>Chart</i>	<i>Remarks</i>
Aus 364	On publication of new chart Aus 814.
Aus 654	On publication of block update for Aus 516. <i>Note: a new chart Aus 637 (Trobriand Islands) will be published late 2011.</i>

For further details refer to the AHS website at [www.hydro.gov.au](http://www.hydro.gov.au) for new edition and new chart stock arrival information.

When placing orders with a chart agent, mariners should advise whether their order pertains to the current edition or the new edition.

**285 AUSTRALIA - Product - Revised prices**

Australian Hydrographic Service (AA521449)

<i>Australian Products</i>	<i>RRP (including GST)</i>
Australian Nautical Charts	\$35.00
Instructional Purposes	\$25.00
Australian Chart Indexes	\$17.50
Australian Chart and Publication Maintenance Handbook - First Edition	\$24.95
Instructional Purposes Price	\$18.95
Australian National Tide Tables - 2011 Edition	\$64.90
Instructional Purposes Price	\$44.95
Australian Seafarers Handbook - Second Edition	\$59.95
Instructional Purposes Price	\$44.95
Seafarer Tides - 2011 Edition	\$59.95
Instructional Purposes Price	\$44.95
Mercator Plotting Sheets	\$17.50

Note: Instructional prices also apply to sales to Royal Volunteer Coastal Patrols or Australian Volunteer Coast Guard Units.

**286\* AUSTRALIA - NEW SOUTH WALES - Botany Bay - Bare Island - Depth**

Sydney Port Corporation (AA521019)

**Aus 198 [32/2011]**

Insert	depth, 13 <sub>9</sub> m, and extend contour W to enclose	33° 59'.482 S	151° 13'.647 E
--------	---	---------------	----------------

**Aus 199 [32/2011]**

Insert	depth, 13 <sub>9</sub> m, and extend contour W to enclose	33° 59'.482 S	151° 13'.647 E
--------	---	---------------	----------------

Delete	depth, 16 <sub>7</sub> m	33° 59'.48 S	151° 13'.63 E
--------	--------------------------	--------------	---------------

**287\* AUSTRALIA - NEW SOUTH WALES - Byron Bay - Julian Rocks - Light buoys**

NSW Department of Environment and Climate Change (AA520510, AA520511)

**Aus 813 [35/2011]**

Amend	light buoy to <i>Fl. Y. 3s (Jan-May)</i>	28° 36'.3 S	153° 37'.7 E
-------	--	-------------	--------------

Delete	light buoy	28° 36'.4 S	153° 36'.8 E
--------	------------	-------------	--------------

**288\* AUSTRALIA - QUEENSLAND - Moreton Bay - Coochiemudlo Island - Fish haven**

Maritime Safety Queensland Notice 191/2011 (AA518925, AA520488)

**Aus 236 [241/2011]**

Insert	fish haven with minimum depth, 5m, between	27° 33'.97 S	153° 21'.14 E
		27° 34'.05 S	153° 21'.26 E
		27° 34'.29 S	153° 21'.08 E
		27° 34'.31 S	153° 20'.97 E
		27° 34'.30 S	153° 20'.91 E
		27° 33'.97 S	153° 21'.14 E

**289\* AUSTRALIA - QUEENSLAND - Brisbane River - Maintained depths**  
Brisbane Port Corporation (AA521436)

**Aus 237 [36/2011]**

Amend	maintained depth to 9.8m	27° 24'.38 S	153° 09'.08 E
-------	--------------------------	--------------	---------------

**Aus 238 [137/2011]**

Amend	maintained depth to 8.8m	27° 26'.48 S	153° 04'.10 E
	maintained depth to 10.5m	27° 25'.50 S	153° 07'.65 E

Delete	dashed line, between	27° 26'.49 S	153° 04'.17 E
		27° 26'.51 S	153° 04'.17 E
	maintained depth, 10.4m	27° 26'.52 S	153° 04'.23 E

**Aus238 (plan, Hamilton Reach)**

Amend	maintained depth to 8.8m	27° 26'.48 S	153° 04'.10 E
-------	--------------------------	--------------	---------------

Delete	maintained depth, 10.4m	27° 26'.52 S	153° 04'.23 E
	dashed line, between	27° 26'.49 S	153° 04'.17 E
		27° 26'.51 S	153° 04'.17 E

**290\* AUSTRALIA - QUEENSLAND - Moreton Bay - North West Channel to Gneering Shoals - Depths**  
Australian Hydrographic Service (AA521016, AA522378)

**Aus 235 [242/2011]**

Insert	depth, 13 <sub>9</sub> m	26° 49'.15 S	153° 10'.44 E
	depth, 5 <sub>6</sub> m	26° 38'.68 S	153° 09'.63 E
	depth, 12 <sub>7</sub> m, enclosed by contour	26° 38'.79 S	153° 10'.53 E

Substitute	depth, 13 <sub>2</sub> m, for depth, 13 <sub>3</sub> m	26° 48'.9 S	153° 10'.3 E
------------	--	-------------	--------------

Delete	depth, 14 <sub>1</sub> m	26° 49'.2 S	153° 10'.5 E
	depth, 6 <sub>2</sub> m	26° 38'.6 S	153° 09'.6 E
	depth, 16 <sub>3</sub> m	26° 38'.7 S	153° 10'.5 E

**291\* AUSTRALIA - QUEENSLAND - North Spit to Breaksea Spit - Legend**

Australian Hydrographic Service (AA522028)

**Aus 816 [NC 25/2/2011]**

Delete	legend, Adjoining Chart Aus 815, in S border	25° 46'.2 S	153° 32'.5 E
--------	--	-------------	--------------

**292\* AUSTRALIA - CORAL SEA - North East Cay - Drying heights**

Australian Hydrographic Service (AA519593)

**Aus 616 (plan, North East Cay Anchorage) [1265/2009]**

Delete	drying height, 2 <sub>5</sub> m	16° 55'.42 S	149° 12'.45 E
	drying height, 2 <sub>4</sub> m	16° 56'.15 S	149° 12'.17 E

**293\* PAPUA NEW GUINEA - Kitava Island to Kaileuna Island - Depths; aeronautical beacon**  
HMAS *Leeuwin* (DHDB 1656101, AA521707)

**Aus 515 [248/2011]**

Delete	depth, 37m, and enclosing contour	8° 36'.5 S	151° 17'.1 E
--------	-----------------------------------	------------	--------------

**Aus 516 [731/2008]**

Insert	depth, 4 <sub>7</sub> m, and extend contour N to enclose	8° 35'.66 S	151° 00'.73 E
	depth, 4 <sub>7</sub> m, enclosed by contour	8° 34'.51 S	151° 00'.92 E
	depth, 12 <sub>5</sub> m, semi enclosed by contour to SW	8° 32'.68 S	150° 59'.73 E

Substitute	depth, 6 <sub>3</sub> m, for depth, 7m	8° 33'.1 S	151° 00'.4 E
------------	--	------------	--------------

Delete	depth, 6 <sub>7</sub> m	8° 35'.5 S	151° 00'.8 E
	rock and enclosing danger circle with legend, PA	8° 33'.3 S	151° 00'.5 E
	depth, 49m	8° 32'.7 S	150° 59'.5 E
	anchorage	8° 32'.7 S	150° 59'.7 E
	depth, 37m, and enclosing contour	8° 36'.5 S	151° 17'.1 E
	aero beacon	8° 30'.3 S	151° 05'.4 E

**Aus 4621 (INT 621) [192/2011]**

Delete	depth, 37m, and enclosing contour	8° 37'.0 S	151° 17'.0 E
	aero beacon	8° 30'.3 S	151° 05'.4 E

**AX 4621F [192/2011]**

Delete	depth, 37m, and enclosing contour	8° 37'.0 S	151° 17'.0 E
	aero beacon	8° 30'.3 S	151° 05'.4 E

**294\* PAPUA NEW GUINEA - Cape Bredow - Light beacon altered**

Australian Hydrographic Service (AA431129, AA521615)

**Aus 523 [NC 11/2/2011]**

Amend	light range to 5M	6° 32'.8 S	147° 50'.9 E
-------	-------------------	------------	--------------

**Aus 653 (plan, Langemak Bay to Finschhafen) [NC 28/1/2011]**

Amend	light range to 5M	6° 32'.78 S	147° 50'.93 E
-------	-------------------	-------------	---------------

**295\* PAPUA NEW GUINEA - Cape Kwoi to Buka Island - ZOC diagram**

Australian Hydrographic Service (DHDB 1631116)

**Aus 397 [140/2011]**

Substitute	accompanying ZOC diagram	4° 30'.0 S	154° 35'.0 E
------------	--------------------------	------------	--------------

**296\* PAPUA NEW GUINEA - Cape St George to Rabaul - ZOC diagram**

Australian Hydrographic Service (DHDB 1631116)

**Aus 554 [140/2011]**

Substitute	accompanying ZOC diagram	4° 20'.0 S	152° 52'.0 E
------------	--------------------------	------------	--------------



**297\* AUSTRALIA - NORTHERN TERRITORY - Blyth River - Light buoys established**

Aboriginal Areas Protection Authority (AA521564, AA521565, AA521590)

**Aus 718 [NC 22/10/2010]**

Insert	special spar light buoy, Q, without topmark	12° 02'.76 S	134° 36'.01 E
	special spar light buoy, Q, without topmark	12° 02'.81 S	134° 35'.39 E
	special spar light buoy, Q, without topmark	12° 03'.39 S	134° 35'.66 E
	special spar light buoy, Q, without topmark	12° 02'.07 S	134° 35'.77 E
	special spar light buoy, Q, without topmark	12° 03'.45 S	134° 35'.14 E

**298\* AUSTRALIA - WESTERN AUSTRALIA - Flag Island - Beacon**

Australian Hydrographic Service (AA517459)

**Aus 61 [573/2006]**

Delete	beacon	20° 27'.60 S	115° 34'.84 E
--------	--------	--------------	---------------

**299\* AUSTRALIA - WESTERN AUSTRALIA - Barrow Island - Depths**

Fugro Survey Pty Ltd (DHDB 266482)

**Aus 742 [94/2011]**

Insert	accompanying block	20° 42'.0 S	115° 21'.0 E
--------	--------------------	-------------	--------------

**300\* AUSTRALIA - WESTERN AUSTRALIA - Airlie Island - Moorings**

Apache Energy Ltd (AA522167)

**Aus 63 [418/2010]**

Substitute	# for legend Moorings, centred on	21° 18'.4 S	115° 10'.4 E
------------	-----------------------------------	-------------	--------------

Delete	restricted area, centred on	21° 18'.4 S	115° 10'.4 E
--------	-----------------------------	-------------	--------------

**Aus 64 [144/2011]**

Insert	#, centred on	21° 18'.4 S	115° 10'.4 E
--------	---------------	-------------	--------------

Delete	restricted area, centred on	21° 18'.4 S	115° 10'.4 E
	legend, Moorings	21° 18'.3 S	115° 11'.0 E

**Aus 328 [93/2011]**

Substitute	# for pile with legend (8 Mooring Piles), centred on	21° 18'.4 S	115° 10'.3 E
------------	--	-------------	--------------

**Aus 743 [144/2011]**

Insert	#, centred on	21° 18'.4 S	115° 10'.4 E
--------	---------------	-------------	--------------

Delete	restricted area, centred on	21° 18'.4 S	115° 10'.4 E
	legend, Moorings	21° 18'.3 S	115° 09'.7 E

**301\* AUSTRALIA - WESTERN AUSTRALIA - Kwinana - Infrastructure**

Birch Group (AA521489 - AA521491)

**Aus 114 [911/2010]**

Insert	accompanying block	32° 09'.8 S	115° 46'.0 E
--------	--------------------	-------------	--------------

**302\* AUSTRALIA - SOUTH AUSTRALIA - Whidbey Isles to Kangaroo Island - Scientific instruments***Former Notice - 873(T)/2010 is cancelled*

South Australian Research and Development Institute (AA520645, AA520646)

**Aus 126 (plan, Althorpe Islands) [NC 4/6/2010]**

Move	# with legend, ODAS	35° 14'.2 S	136° 41'.7 E
	to	35° 15'.0 S	136° 41'.4 E

**Aus 342 [598/2010]**

Insert	# with legend, ODAS	34° 55'.88 S	135° 00'.62 E
--------	---------------------	--------------	---------------

**Aus 343 [147/2011]**

Insert	# with legend, ODAS	34° 55'.95 S	135° 00'.54 E
	# with legend, ODAS	36° 08'.83 S	135° 54'.10 E

Move	# with legend, ODAS	35° 14'.2 S	136° 41'.6 E
	to	35° 15'.07 S	136° 41'.32 E

**Aus 346 [147/2011]**

Insert	# with legend, ODAS	36° 08'.76 S	135° 54'.18 E
--------	---------------------	--------------	---------------

**Aus 780 [148/2011]**

Move	# with legend, ODAS	35° 14'.2 S	136° 41'.7 E
	to	35° 15'.0 S	136° 41'.4 E

Substitute	depth, 35m, for sounding out of position	35° 14'.2 S	136° 41'.5 E
------------	--	-------------	--------------

**AX 0343E [97/2011]**

Insert	# with legend, ODAS	34° 55'.95 S	135° 00'.54 E
	# with legend, ODAS	36° 08'.83 S	135° 54'.10 E

Move	# with legend, ODAS	35° 14'.2 S	136° 41'.6 E
	to	35° 15'.07 S	136° 41'.32 E

**303\* AUSTRALIA - SOUTH AUSTRALIA - Marion Reef - Nav aids***Former Notices - 1098(T)/2010, 127(T)/2011 are cancelled*

Department for Transport, Energy and Infrastructure SA (AA521998, AA521999, AA523226)

**Aus 139 (plan, Macdonnell Sound) [148/2011]**

Move	light beacon	35° 09'.2 S	137° 49'.3 E
	to	35° 09'.21 S	137° 49'.02 E
	beacon	35° 08'.4 S	137° 45'.6 E
	to	35° 08'.43 S	137° 45'.45 E

**Aus 780 [302/2011]**

Move	light beacon	35° 09'.2 S	137° 49'.3 E
	to	35° 09'.21 S	137° 49'.02 E
	beacon	35° 08'.4 S	137° 45'.6 E
	to	35° 08'.43 S	137° 45'.45 E

**Aus 781 [148/2011]**

Move	light beacon	35° 09'.2 S	137° 49'.3 E
	to	35° 09'.21 S	137° 49'.02 E
	beacon	35° 08'.4 S	137° 45'.6 E
	to	35° 08'.43 S	137° 45'.45 E

**304\* SOUTHERN OCEAN - Antarctica - Ryrie Rock - Rock**  
Aurora Australis (AA521838), Australian Antarctic Division (AA522231)

**Aus 402 [253/2011]**

Insert	legend, <i>Lies 2.8M SSW</i>	67° 03'.0 S	61° 11'.0 E
--------	------------------------------	-------------	-------------

**Aus 449 (INT 9035) [253/2011]**

Insert	legend, <i>Lies 2.8M SSW</i>	67° 03'.0 S	61° 33'.0 E
--------	------------------------------	-------------	-------------

*Note: on receipt of survey data a block update will be published.*

**Aus 4074 (INT 74) [253/2011]**

Move	rock which does not cover	67° 03'.0 S	61° 27'.0 E
	to	67° 05'.2 S	61° 25'.2 E

**305\* SOUTHERN OCEAN - Antarctica - Kilby Island to Molholm Island - Beacons**  
Australian Antarctic Division (AA509118)

**Aus 601 (INT 9021) [809/2005]**

Delete	beacon	66° 16'.4 S	110° 31'.4 E
	beacon	66° 16'.7 S	110° 31'.6 E
	beacon	66° 16'.2 S	110° 33'.2 E
	aero beacon	66° 17'.2 S	110° 32'.9 E
	beacon	66° 16'.7 S	110° 35'.1 E

**Aus 601 (INT 9021) (plan, Newcomb Bay)**

Delete	beacon	66° 16'.39 S	110° 31'.40 E
	beacon	66° 16'.69 S	110° 31'.57 E
	beacon	66° 16'.25 S	110° 33'.16 E

**306\* AUSTRALIA - TASMANIA - Cape Sorell - Light buoy; aeronautical beacon**  
Bureau of Meteorology (AA520892)

**Aus 177 [254/2011]**

Move	light buoy	42° 08'.0 S	145° 01'.0 E
	to	42° 11'.96 S	145° 03'.29 E

Delete	aero beacon	42° 09'.2 S	145° 17'.7 E
--------	-------------	-------------	--------------

**Aus 792 [493/2010]**

Move	light buoy	42° 08'.0 S	145° 01'.0 E
	to	42° 11'.96 S	145° 03'.29 E

Delete	aero beacon	42° 09'.2 S	145° 17'.7 E
--------	-------------	-------------	--------------

**307\* AUSTRALIA - TASMANIA - Coles Bay - Light established**  
*Former Notice - 816(T)/2010 is cancelled*  
Marine and Safety Tasmania Notice M38/2011 (AA520968)

**Aus 169 (plan, Coles Bay) [843/2010]**

Insert	light, <i>Fl.Bu.5s</i>	42° 07'.720 S	148° 17'.328 E
--------	------------------------	---------------	----------------

Delete	light	42° 07'.71 S	148° 17'.32 E
--------	-------	--------------	---------------

**Aus 766 [495/2010]**

Amend	light to <i>Fl.Bu.5s</i>	42° 07'.7 S	148° 17'.3 E
-------	--------------------------	-------------	--------------

**308\* AUSTRALIA - VICTORIA - Western Port - Watson Inlet - Buoy established**

Victorian Notice 45/2011 (AA522211)

**Aus 151 [959/2010]**

Insert	special conical buoy, with topmark	38° 14'.814 S	145° 15'.878 E
--------	------------------------------------	---------------	----------------

**309\* AUSTRALIA - VICTORIA - Ninety Mile Beach - Historic wreck**

Department of Sustainability and Environment Victoria (AA521931)

**Aus 357 [156/2011]**

Insert	depth, 29m, enclosed by danger circle with magenta legend, <i>Historic Wk with Protected Zone (see Note)</i>	38° 33'.15 S	147° 12'.45 E
--------	--	--------------	---------------

**Aus 487 [255/2011]**

Insert	depth, 29m, enclosed by danger circle with magenta legend, <i>Historic Wk with Protected Zone</i>	38° 33'.15 S	147° 12'.45 E
--------	---	--------------	---------------

Delete	depth, 33m	38° 33'.8 S	147° 13'.2 E
--------	------------	-------------	--------------

**Aus 4644 (INT 644) [255/2011]**

Insert	depth, 29m, enclosed by danger circle with magenta legend, <i>Historic Wk with Protected Zone</i>	38° 33'.2 S	147° 12'.5 E
--------	---	-------------	--------------

**310(T)/2011 AUSTRALIA - NEW SOUTH WALES - Bega to Port Jackson - Ship to ship transfer completed**

*Former Notice* - 199(T)/2011 is cancelled  
 Caltex Refineries (NSW) Pty Ltd (AA521728)

Cancel this notice on receipt.

**Chart formerly affected - Aus 489 - Aus 4643 (INT 643)**

**311(P)/2011 AUSTRALIA - NEW SOUTH WALES - North Avoca - Scuttling; light buoy**

*Date* - On or about 13 April 2011  
 Capability By Design (AA523809), NSW Maritime Notice HB1005 (AA523954)

HMAS *Adelaide* will be scuttled in position 33° 27'.91 S 151° 27'.38 E on Wednesday 13 April 2011.

A special light buoy exists in position 33° 27'.97 S 151° 27'.39 E.

During the scuttling a 1000m radius exclusion zone exists from position 33° 27'.91 S 151° 27'.38 E.

**Chart which will be affected - Aus 197 - Aus 204 - Aus 809 - AX 0809E**

**312(T)/2011 AUSTRALIA - QUEENSLAND - Moreton Bay - North Banks - Scientific instrument**

*Former Notice* - 851(T)/2010 is cancelled  
 Maritime Safety Queensland Notice 251(T)/2011 (AA523097)

A special light buoy, *Fl(5)Y.20s*, exists in position 26° 53'.93 S 153° 16'.89 E.

Mariners are not to use the buoy as a mooring.

**Chart temporarily affected - Aus 235**

**313(T)/2011 AUSTRALIA - QUEENSLAND - Moreton Bay - Russell Island - Harbour works**

*Date* - Until 19 May 2011  
 Maritime Safety Queensland Notice 246(T)/2011 (AA522295)

Harbour works associated with the construction of a boat ramp in position 27° 38'.76 S 153° 22'.68 E are in progress.

Mariners are advised to navigate with caution in the area.

**Chart temporarily affected - Aus 236**

**314(T)/2011 AUSTRALIA - QUEENSLAND - Brisbane River - Depth information**

Former Notice - 260(T)/2011 is cancelled

Brisbane Port Corporation (AA521436)

Available depths and under keel clearances (UKC) at 11 March 2011:

<i>Berth</i>	<i>Metres</i>	<i>Remarks</i>
* Fisherman Islands No10	13.1	
* Fisherman Islands No9	13.2	
* Fisherman Islands No8	13.1	
* Fisherman Islands No7	13.1	
* Fisherman Islands No6	13.0	
* Fisherman Islands No5	12.8	
* Fisherman Islands No4	12.6	
* Fisherman Islands No3	12.4	
* Fisherman Islands No2	13.0	
* Fisherman Islands No1	12.6	
* Fisherman Islands Grain and Woodchip	12.6	
* Caltex Fisherman Islands	14.3	
* Fisherman Islands Coal	12.7	
* Fisherman Islands General Purpose	10.8	
BP Luggage Point	13.2	
* Caltex Products	9.9	
Cement Australia Co Wharf	9.2	
BP Products	10.9	
Shell	11.0	
Pacific Terminals	10.1	
Incitec North	10.0	
Incitec South	10.2	
Pinkenba 1	10.5	
Pinkenba 2	10.5	
Riverside Marina	-	
Sugar Terminal	9.8	
Cairncross Fitting Out Wharf	6.5	
Cairncross Breasting Wharf	5.6	
Brisbane Naval Wharf	-	
Maritime No3	5.6	(not maintained)
Maritime No2	9.2	
Maritime No1	9.0	
Hamilton No4	10.3	
Hamilton No1	8.7	
Brisbane Cruise Ship Terminal	8.6	
	<i>Metres</i>	<i>UKC/Remarks</i>
<i>Moreton Bay :</i>		
North East Channel	5.5	1.5
North West Channel	15.0	2.3 (280m width)
North West Bypass Channel	9.2	1.6
Spitfire Channel	15.0	1.5 (600m width)
East Knoll Bypass Channel	6.9	1.4
East Channel	15.0	1.5 (300m width from western side)
Main Channel (M8 - M9)	10.0	1.8
Entrance Channel (E5 - EBCN) 14.7	1.5	
<i>Brisbane River :</i>		
Entrance Beacons and Bar Cutting	13.1	1.46
Fisherman Islands Swing Basin	13.0	1.3
Pelican Banks Reach to Hamilton Reach	8.9	0.6 / 0.9 (draft/tide)
Cement Australia Swing Basin	8.0	0.6 / 0.9 (draft/tide)
Pinkenba Swing Basin	8.9	0.6 / 0.9 (draft/tide)
Hamilton Swing Basin	8.0	0.6 / 0.9 (draft/tide)
* Indicates new or revised entry.		

**Chart temporarily affected - Aus 235 - Aus 236 - Aus 237 - Aus 238**

**315(T)/2011 AUSTRALIA - QUEENSLAND - Gladstone - Anchorage area***Former Notice - 59(T)/2011 is cancelled*

Maritime Safety Queensland Notice 225(T)/2011 (AA521440)

A small craft anchorage exists within an area bounded by the following positions:

23° 45' 00 S 151° 09' 80 E

23° 45' 00 S 151° 10' 00 E

23° 46' 50 S 151° 10' 15 E

23° 46' 63 S 151° 10' 16 E.

Mooring buoys exist within the area.

Permission must be obtained from Gladstone Port Corporation prior to anchoring or mooring within the area.

Mariners are advised to navigate with caution in the area.

**Chart temporarily affected - Aus 245****316(T)/2011 AUSTRALIA - QUEENSLAND - Hay Point - Dredging operations***Date - Until 30 September 2011*

Maritime Safety Queensland Notice 269(T)/2011 (AA523955)

*SEP BHD Supply* and support vessels *MT Kythira* and *Lady Christine* are conducting drilling and blasting operations in the area to the south of DBCT berth No1 (21° 15' 00 S 149° 18' 36 E).The dredges *Tarvos* and *Simson* are conducting dredging operations.

All vessels will monitor VHF Ch 14 and 16 and display appropriate lights and symbols.

Mariners are advised to navigate with caution in the area.

**Chart temporarily affected - Aus 249 - Aus 250 - AX 0249E****317(T)/2011 AUSTRALIA - QUEENSLAND - Whitehaven Bay - Lagoon Rock - Light beacon destroyed**

Maritime Safety Queensland Notice 240(T)/2011 (AA522334)

The west cardinal light beacon, Q(9)15s (20° 16' 03 S 149° 02' 48 E), has been destroyed.

**Chart temporarily affected - Aus 252 - Aus 253 - Aus 824 - Aus 825****318(T)/2011 AUSTRALIA - QUEENSLAND - Fitzalan Passage - Light buoy off station**

Maritime Safety Queensland Notice 262(T)/2011 (AA523294)

The light buoy, Fl. Y.2.5s (20° 18' 80 S 148° 56' 05 E), is off station

**Chart temporarily affected - Aus 252 - Aus 253 - Aus 254****319(T)/2011 AUSTRALIA - QUEENSLAND - Rollingstone Creek - Light buoy off station**

Maritime Safety Queensland Notice 238(T)/2011 (AA522338)

The isolated danger light buoy, Iso.2s (19° 00' 09 S 146° 24' 51 E), is off station

**Chart temporarily affected - Aus 827**

**320(T)/2011 AUSTRALIA - QUEENSLAND - Lucinda - Exclusion zone***Former Notice - 268(T)/2011 is cancelled*

Maritime Safety Queensland Notice 142(T)/2011 (AA517197)

A 100m exclusion zone exists around the Bulk Sugar Terminal (18° 31'.25 S 146° 23'.17 E); including the mooring dolphins and either side of the trestle leading to the wharf from the mainland.

**Chart temporarily affected - Aus 259 - Aus 267****321(T)/2011 AUSTRALIA - QUEENSLAND - Mourilyan - Depth information***Former Notice - 1396(T)/2010 is cancelled*

Maritime Safety Queensland Notice 229(T)/2011 (AA521438)

Available depths as at 11 March 2011:

*Metres*

Departure Channel 9.8

\* Inner Channel 9.5

\* Swing Basin 6.5

\* Sugar Berth 9.9

\* Indicates revised entry.

Shoaling for a distance of 200m to seaward of the berth pocket can develop over time.

**Chart temporarily affected - Aus 258****322(T)/2011 PAPUA NEW GUINEA - Port Moresby to Kerema Bay - Seismic survey***Former Notice - 65(T)/2011 is cancelled**Date - Until 30 June 2011*

National Maritime Safety Authority PNG Notice 6/2011 (AA512484)

MV *BGP Prospector* is conducting a survey in an area bounded by the following positions:

8° 30'.0 S 145° 48'.0 E

9° 00'.0 S 146° 24'.0 E

9° 45'.0 S 147° 13'.0 E

9° 50'.0 S 147° 08'.0 E

8° 42'.0 S 145° 37'.0 E.

**Chart temporarily affected - Aus 377 - Aus 379 - Aus 505 - Aus 621 - AX 60377****323(T)/2011 AUSTRALIA - TORRES STRAIT - Prince of Wales Channel - Depths disproved***Former Notice - 115(P)/2011 is cancelled*HMAS *Mermaid* (AA521474)

Cancel this notice on receipt.

**Chart formerly affected - Aus 296 - Aus 700****324(T)/2011 AUSTRALIA - NORTHERN TERRITORY - Apsley Strait - Light buoys off station and unlit**

Department of Lands and Planning (AA523799)

Light buoys in Apsley Strait between positions 11° 51'.61 S 130° 35'.09 E and 11° 17'.03 S 130° 17'.90 E are off station and unlit.

Mariners are advised to navigate with caution in the area.

**Chart temporarily affected - Aus 22 - Aus 23 - Aus 309 - Aus 722 - AX 0309F - AX 72309 - AX 72722**



**325(T)/2011 AUSTRALIA - TIMOR SEA - Van Cloon Shoal - Drilling operations northeastwards completed***Former Notice* - 1399(T)/2010 is cancelled

Total E&amp;P Australia (AA509018)

Cancel this notice on receipt.

**Chart formerly affected - Aus 315 - AX 0315F****326(P)/2011 AUSTRALIA - WESTERN AUSTRALIA - Port Hedland - Light beacon established***Date* - On or about 20 April 2011

Port Hedland Port Authority (AA523131)

A rear leading light beacon, *Q.Bu*, exists in position 20° 19'.914 S 118° 35'.195 E. The light beacon will be upgraded to include a daymark apex down and the light elevation will be amended.

The light beacon, *Q.Bu.6m 3M* (20° 19'.85 S 118° 35'.10 E), is currently unlit and will be removed shortly.

The light beacon, *Fl.Bu.2s 11m 3M* (20° 19'.88 S 118° 35'.15 E), daymark will be altered to apex up.

**Chart which will be affected - Aus 54****327(T)/2011 AUSTRALIA - WESTERN AUSTRALIA - Dampier Archipelago - Drilling operations northwards**

Aventus Consulting (AA523844)

The drill rig *Stena Clyde* and support vessels *Far Fosna* and *Lady Sandra* are conducting drilling operations in position 19° 18'.29 S 116° 45'.50 E.

A 500m safety zone exists around the drill rig.

Mariners are advised to navigate with caution in the area.

**Chart temporarily affected - Aus 327 - Aus 741 - Aus 4722 (INT 722) - Aus 4723 (INT 723) - AX 4722F****328(T)/2011 AUSTRALIA - WESTERN AUSTRALIA - Airlie Island - Oil fields to be decommissioned northwards***Date* - Until 15 April 2011

Apache Energy Ltd (AA523507)

MSV *Southern Ocean* will be onsite to assist with the removal of platforms South Pepper (21° 07'.40 S 115° 16'.30 E (WGS84 datum)) and North Herald (21° 10'.43 S 115° 15'.91 E).

**Chart temporarily affected - Aus 63 - Aus 328 - Aus 743 - Aus 4723 (INT 723) - Aus 4725 (INT 725)****329(P)/2011 AUSTRALIA - WESTERN AUSTRALIA - Fremantle - Deepwater Channel - Channel realignment***Former Notice* - 178(T)/2011 is cancelled*Date* - On or about 22 March 2011

Fremantle Ports Notice 4/2011 (AA523323)

A starboard lateral pillar light buoy, *Iso.G.2s*, exists in position 32° 00'.060 S 115° 41'.496 E.

A port lateral pillar light buoy, *Iso.R.2s*, exists in position 32° 00'.065 S 115° 41'.711 E.

The following light buoys have been withdrawn:

	<i>Position</i>	<i>Remarks</i>
<i>Iso.R.2s</i>	32° 00'.01 S 115° 41'.23 E	
<i>Fl.G.4s</i>	31° 59'.52 S 115° 41'.40 E	A lit wreck buoy, <i>Fl.G.2s</i> , exists in situ.
<i>Iso.G.2s</i>	31° 59'.97 S 115° 40'.83 E	A lit wreck buoy, <i>Q.Y</i> , exists in situ.

*Note:* a block update for the realignment of the Deepwater Channel is in progress.

**Chart which will be affected - Aus 112 - AX 63112**

25 March 2011

**330(T)/2011 AUSTRALIA - SOUTH AUSTRALIA - Great Sandy Point to West Beach - Scientific instruments***Former Notice* - 225(T)/2011 is cancelled*Date* - Until 15 April 2011

Department of Transport, Energy and Infrastructure SA Notice 13/2011 (AA522325)

126 instruments marked spherical pink and white buoys exist within 6M of the coast between 34° 35'.0 S and 34° 54'.0 S. A further 21 instruments marked by spherical pink and white buoys exist within 4-15M of the coast between 34° 31'.5 S and 34° 49'.0 S.

Mariners are advised to navigate with caution in the area.

**Chart temporarily affected - Aus 130 - Aus 137 - Aus 138 - Aus 781**

**331(T)/2011 AUSTRALIA - TASMANIA - River Derwent - Raft removed***Date* - Until 19 April 2011

Marine and Safety Tasmania Notice M41/2011 (AA522333)

The raft (42° 51'.07 S 147° 20'.19 E) has been removed; a special light buoy, *Fl. Y.3s*, exists in situ.

**Chart temporarily affected - Aus 172**

**332(T)/2011 AUSTRALIA - TASMANIA - Georges Bay - Pelican Point - Dredging operations***Date* - Until 15 April 2011

Marine and Safety Tasmania Notice M42/2011 (AA522328 AA523124)

The barge *Dredge* is conducting dredging operations in the vicinity of Pelican Point (41° 17'.35 S 148° 19'.52 E).

A pipeline exists from the barge to the shore and mariners must pass the barge on the western side. The barge will display appropriate lights and shapes, and has deployed an anchor 30m to the west.

Vessels transiting the area must contact the barge prior to transit as restrictions are in place.

The barge will monitor VHF Ch 16 or can be contacted on 0437 124 385, 0400 175 791 or 0413 007 387.

Mariners are advised to navigate with caution in the area.

**Chart temporarily affected - Aus 169**

**333(T)/2011 AUSTRALIA - TASMANIA - Furneaux Group - Franklin Sound - Shoaling charted***Former Notice* - 922(P)/2005 is cancelled

Australian Hydrographic Service (AA521463)

Cancel this notice on receipt.

**Chart formerly affected - Aus 179 - Aus 800**

**334(T)/2011 AUSTRALIA - VICTORIA - Split Point - Light unreliable**

Australian Maritime Safety Authority (AA523846)

The light K2182 (38° 28'.1 S 144° 06.3 E) is unreliable at medium to short range. Range of poor performance will depend on height of eye.

**Chart temporarily affected - Aus 349 - Aus 487 - Aus 788 - Aus 4644 (INT 644) - Aus 4728 (INT 728)**

**335(T)/2011 AUSTRALIA - VICTORIA - Port Phillip - Corio Bay - Harbour works***Date - Until 21 April 2011*

Victorian Notice 44(T)/2011 (AA522341)

Harbour works are in progress in St Helens boat harbour (38° 07'.19 S 144° 21'.58 E).

Mariners are advised that during this period the ramp will not be available for access and to use Limeburners Point boat ramp (38° 08'.61 S 144° 23'.11 E).

All hazards to navigation will display appropriate lights and shapes.

Mariners are advised to navigate with caution in the area.

**Chart temporarily affected - Aus 153 - Aus 157**

**336(T)/2011 AUSTRALIA - VICTORIA - Port Phillip - Williamstown - Harbour works completed***Former Notice - 231(T)/2011 is cancelled*

Victorian Notice 31(T)/2011 (AA518513)

Cancel this notice on receipt.

**Chart formerly affected - Aus 154**

**337(T)/2011 AUSTRALIA - VICTORIA - Port Phillip - Port Melbourne - Maribyrnong River - Harbour works***Former Notice - 130(T)/2011 is cancelled**Date - Until 6 April 2011*

Victorian Notice 35(T)/2011 (AA518488)

Harbour works associated with the remediation of berth No1 (37° 49'.05 S 144° 54'.38 E) are in progress.

During this period the berth will be closed to shipping.

Mariners are advised to navigate with caution in the area.

**Chart temporarily affected - Aus 154**

## HYDROGRAPHIC REPORTS

<i>Locality</i>	<i>Report</i>	<i>Ship/Authority</i>	<i>Observer</i>
ANT- Ryrie Rock	Position Depths	MV <i>Aurora Australis</i>	S Laughlin

**NAVIGATION WARNINGS**

*The following radio messages have been received during the period to 25 March 2011. Signal copies of these messages may be destroyed. It is recommended that the reprint of Navigational Warnings should be kept in a file or a book divided into areas. Cancellation should be made on receipt of signals and reprints.*

*Rigs on location other than those listed in the latest Section III summary are the subject of Radio Navigational Warnings. Rigs in transit will not be the subject of Warnings.*

**AUSCOAST WARNING**

- 094 Reindeer wellhead platform established position 20° 01'.4 S 116° 18'.6 E with light Mo(U)15s. 2.5M clearance requested.
- 095 Drill rig *Songa Venus* in position 11° 46'.42 S 127° 18'.22 E. 2.5M clearance requested.
- 096 Special purpose vessel *Geo Atlantic* conducting underwater operations in an area bounded by 20° 09'.0 S to 20° 34'.0 S and 115° 49'.0 E to 116° 31'.0 E. 6.0M clearance requested.
- 097 Cancelled.
- 098 Cancelled.
- 099 Cancelled.
- 100 Cancelled.
- 101 Drill rig *Ocean America* in position 15° 03'.95 S 121° 17'.50 E. 2.5M clearance requested.
- 102 Cancelled.
- 103 Cancelled.
- 104 Cancelled.
- 105 Drill rig *Ocean Patriot* in position 20° 04'.96 S 115° 10'.56 E. 2.5M clearance requested.
- 106 Cancelled.
- 107 Cancelled.
- 108 Cancelled.
- 109 Special purpose vessel *Southern Supporter* conducting geophysical survey with towed array in an area bounded by 19° 25'.0 S to 19° 35'.0 S and 115° 35'.0 E to 116° 15'.0 E. 1.0M clearance requested.
- 110 Cancelled.
- 111 Cancelled.
- 112 Port Hedland light beacon K1676 (19° 59'.54 S 118° 26'.10 E) unreliable.
- 113 Four lit yellow mooring buoys laid in an area bounded by 20° 01'.39 S to 20° 02'.67 S and 113° 36'.80 E to 113° 38'.28 E.

**NAVAREA X WARNINGS**

- 003 Cancelled.

**Navigational warnings in force as at 250001UTC MAR 11.****Auscoast**

**2010** 283 328

**2011** 015 029 036 058 067 068 069 070 071 075 079 092 094 095 096 101 105 109 112 113

**Navarea X**

**2011** 001

**Summary of mobile drilling rigs as at 250001UTC MAR 11.**

<i>Name</i>	<i>Position</i>
Songa Venus	11° 46'.42 S 127° 18'.22 E
Ocean America	15° 03'.95 S 121° 17'.50 E
Ensco 109	19° 42'.13 S 116° 42'.30 E
Ocean Patriot	20° 04'.96 S 115° 10'.56 E
Saipem 10000	18° 10'.60 S 115° 00'.62 E
Atwood Eagle	19° 35'.87 S 114° 09'.37 E
Nan Hai 6	21° 26'.00 S 114° 02'.00 E
Jack Bates	20° 29'.07 S 113° 44'.37 E

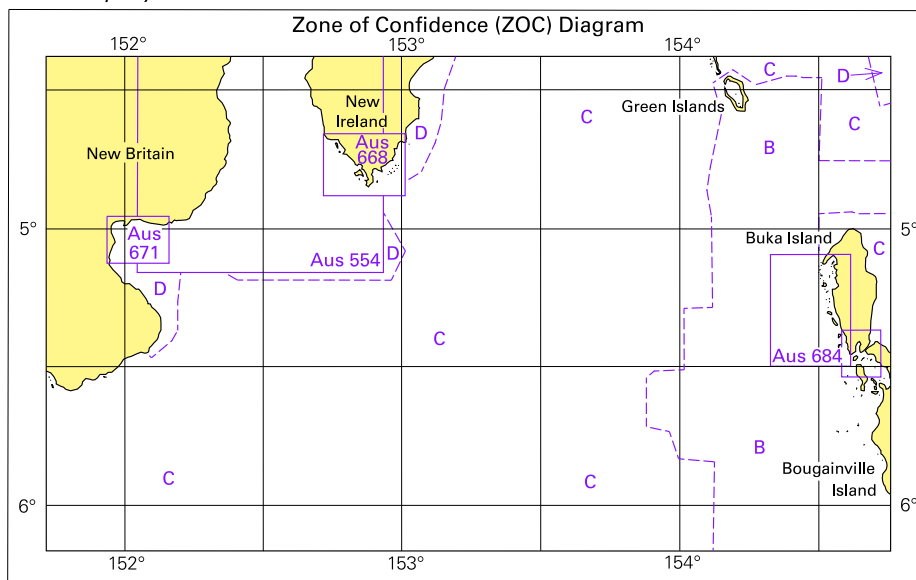
**NAVAREA XIV WARNINGS**

Nil.

**Navarea XIV warnings in force as at 250001UTC MAR 11.**

**2010** 038 047

To accompany Australian Notice to Mariners 295/2011



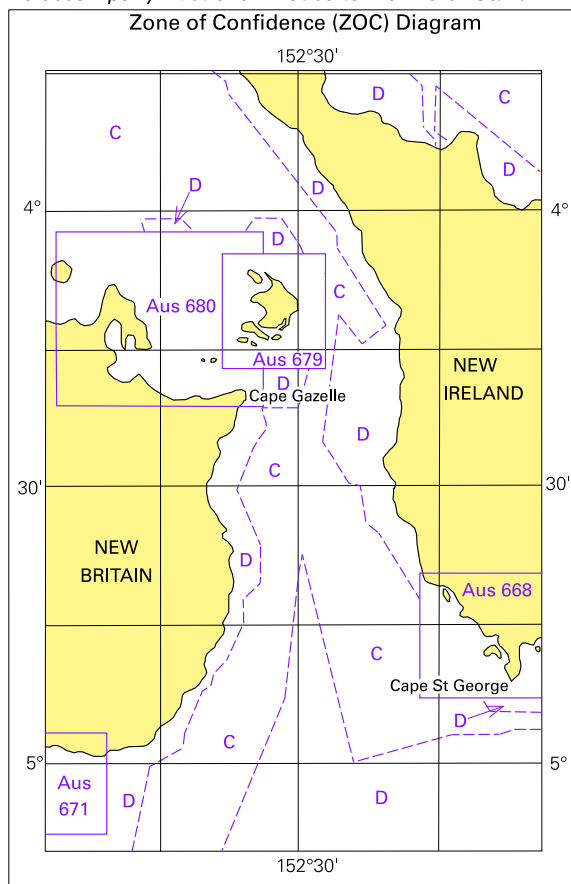
Block for chart Aus 397

© Commonwealth of Australia 2011

(121:3 x 75:8mm)

To accompany Australian Notice to Mariners 296/2011

Zone of Confidence (ZOC) Diagram

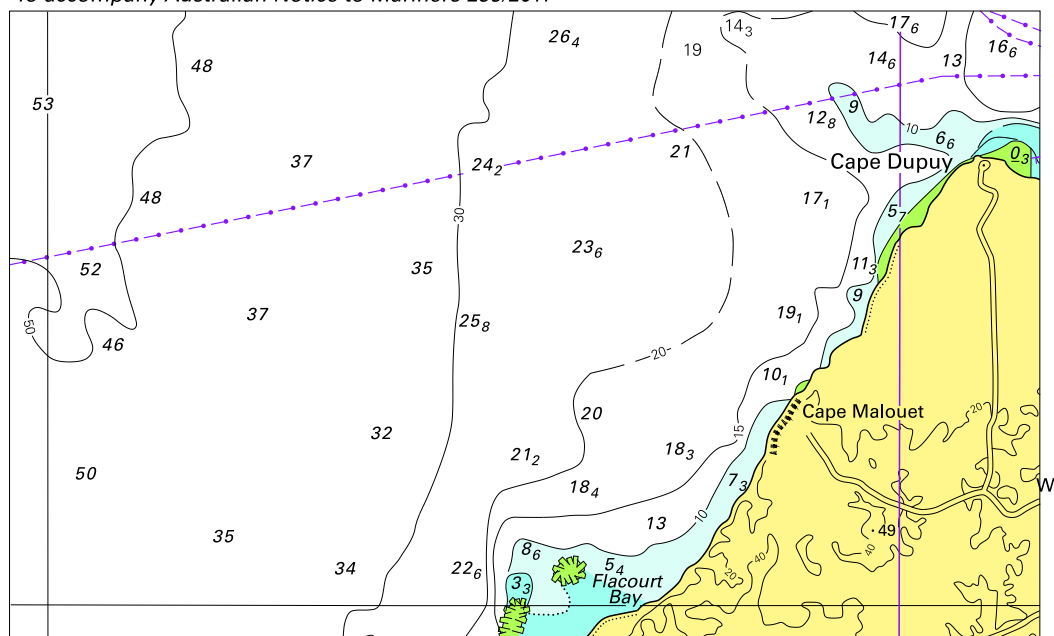


© Commonwealth of Australia 2011

Block for chart Aus 554

(75.5 x 116.5mm)

To accompany Australian Notice to Mariners 299/2011



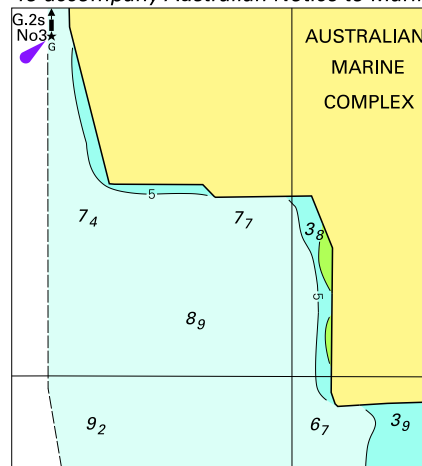
Block for chart Aus 742

© Commonwealth of Australia 2011

(136.3 x 82.8mm)



*To accompany Australian Notice to Mariners 301/2011*



© Commonwealth of Australia 2011  
 Block for chart Aus 114 (55.2 x 60.8mm)