



23 September 2011

Edition 19

Australian Notices to Mariners are the authority for correcting Australian Charts and Publications

AUSTRALIAN NOTICES TO MARINERS

Notices 949 – 995 

Published fortnightly by the Australian Hydrographic Service

Commodore R. NAIRN RAN
Hydrographer of Australia

SECTIONS.

- I. **Australian Notices to Mariners, including blocks and notes.**
- II. **Hydrographic Reports.**
- III. **Navigational Warnings.**

SUPPLEMENTS.

- I. **Tracings**
- II. **Cumulative List of Australian Notices to Mariners.**
- III. **Temporary and Preliminary Notices in force.**
- IV. **Amendments to Admiralty List of Lights and Fog Signals (Vol K),
Radio Signals (NP 281(2), 282, 283(2), 285, 286(4)) and Sailing
Directions (NP 9, 13, 14, 15, 33, 34, 35, 36, 39, 44, 51, 60, 61, 62, 100, 136).**

© Commonwealth of Australia 2011

This work is copyright. Apart from any use permitted under the Copyright Act 1968, no part may be reproduced by any process, adapted, communicated or commercially exploited without prior written permission from The Commonwealth represented by the Australian Hydrographic Service.

IMPORTANT NOTICE

This edition of Notices to Mariners includes all significant information affecting AHS products which the AHS has become aware of since the last edition. All reasonable efforts have been made to ensure the accuracy and completeness of the information, including third party information, on which these updates are based. The AHS regards third parties from which it receives information as reliable, however the AHS cannot verify all such information and errors may therefore exist. The AHS does not accept liability for errors in third party information.

GENERAL INSTRUCTIONS

The substance of these notices should be inserted on the charts affected.

Bearings are referred to the true compass and are reckoned clockwise from North; those relating to lights are given as seen by an observer from seaward. Positions quoted in permanent notices relate to the horizontal datum for the chart(s). When preliminary or temporary notices affect multiple charts, positions will be provided in relation to only one horizontal datum and that datum will be specified. When the multiple charts do not have a common horizontal datum, mariners will be required to adjust the position(s) for those charts not on the specified datum. The range quoted for a light is its nominal range. Depths are with reference to the chart datum of each chart. Heights are above mean high water springs or mean higher high water, as appropriate.

The capital letter (P) or (T) after the number of any notice denotes a preliminary or temporary notice respectively, which are contained separately at the end of the permanent notices. A star (*) adjacent to the number of a notice indicates that the notice is based on original information.

REPORTING OF DANGERS

Mariners are particularly requested to notify the AUSTRALIAN HYDROGRAPHIC SERVICE, Locked Bag 8801 Wollongong, NSW 2500 (Fax 02-4223 6599, e-mail Hydro.NTM@defence.gov.au or, alternatively by filling in and submitting the [Hydrographic Notes](#) forms located on the web site – www.hydro.gov.au), immediately on the discovery of new dangers or suspected dangers to navigation. For changes or defects in aids to navigation notify AusSAR (Fax 02-6230 6868 or email rccaus@amsa.gov.au).

AUTHORISED USE

Copies of Australian notices are available free of charge from the Australian Hydrographic Service (AHS) website (www.hydro.gov.au) and through the eNotices (email) service (www.hydro.gov.au/enotices/enotices.htm).

Individual Notices may be copied for the purpose of inserting Notice substance on official charts and publications. Paper copies may be printed by chart agents and distributed to customers on a cost recovery basis. Participating chart agents are listed on the AHS website as providing a 'Paper Notices to Mariners' service (www.hydro.gov.au/prodserv/distributors/distributors.htm). Copies of the notices may not be sold for profit without prior written agreement.

NUMERICAL INDEX OF NOTICES TO MARINERS

Edition No 19

Notices	Aus Chart, INT Chart, AHP
949.....	Aus 286, Aus 753, AX 0110E, AHP 11, 114
950.....	Amendment to Australian Notice to Mariners No2
951.....	Amendment to Australian National Tide Tables
952.....	Aus 197
953.....	Aus 200, 202, AX 6202F
954.....	Aus 610
955.....	Aus 812, 813, 4643, INT 643
956.....	Aus 235, 236, 814, 815
957.....	Aus 244, 245,
958.....	Aus 270
959.....	Aus 24, 26, 28, 722, AX 72026, 72722
960.....	Aus 58
961.....	Aus 62
962.....	Aus 105, AX 60105
963.....	Aus 113
964.....	Aus 110, 118, 336, 337, 759, AX 0118E
965.....	Aus 119
966.....	Aus 120, 122
967(T).....	Aus 193, AX 60193, 67192, 70193
968(T).....	Aus 207, 208
969(T).....	Aus 235, 236, 237, 238, 814, 815
970(T).....	Aus 236
971(T).....	Aus 235
972(T).....	Aus 815
973(T).....	Aus 242, 243
974(T).....	Aus 244, 245
975(T).....	Aus 245
976(T).....	Aus 260, 261, 367, 490, 820, 822, AX 0260E, 0367E, 0820E, 0822E, 60260, 67261
977(T).....	Aus 255
978(T).....	Aus 255
979(T).....	Aus 256, 827
980(T).....	Aus 262, 263, AX 63262
981(T).....	Aus 262, 830
982(T).....	Aus 377, 378, 379, AX 60377
983(T).....	Aus 378, 502, 4620, 4622, INT 620, 622, AX 4620F
984(T).....	Aus 301
985(T).....	Aus 6
986(T).....	Aus 324
987(T).....	Aus 55, 57, 326, 327, 740, 741
988(T).....	Aus 62, 742
989(T).....	Aus 115
990(P).....	Aus 122
991(T).....	Aus 141
992(T).....	Aus 349, 487, 788, 4644, 4728, INT 644, 728
993(T).....	Aus 154
994(T).....	Aus 150, 151, 152
995(T).....	Summer time

Aus Chart	Notices	Aus Chart	Notices
Aus 6.....	985(T)	Aus 610	954
Aus 24.....	959	Aus 722	959
Aus 26.....	959	Aus 740	987(T)
Aus 28.....	959	Aus 741	987(T)
Aus 55.....	987(T)	Aus 742	988(T)
Aus 57.....	987(T)	Aus 753	949
Aus 58.....	960	Aus 759	964
Aus 62.....	961, 988(T)	Aus 788	992(T)
Aus 105.....	962	Aus 812	955
Aus 110.....	964	Aus 813	955
Aus 113.....	963	Aus 814	956, 969(T)
Aus 115.....	989(T)	Aus 815	956, 969(T), 972(T)
Aus 118.....	964	Aus 820	976(T)
Aus 119.....	965	Aus 822	976(T)
Aus 120.....	966	Aus 827	979(T)
Aus 122.....	966, 990(P)	Aus 830	981(T)
Aus 141.....	991(T)	Aus 4620	983(T)
Aus 150.....	994(T)	Aus 4622	983(T)
Aus 151.....	994(T)	Aus 4643	955
Aus 152.....	994(T)	Aus 4644	992(T)
Aus 154.....	993(T)	Aus 4728	992(T)
Aus 193.....	967(T)	AX 0110E	949
Aus 197.....	952	AX 0118E	964
Aus 200.....	953	AX 0260E	976(T)
Aus 202.....	953	AX 0367E	976(T)
Aus 207.....	968(T)	AX 0820E	976(T)
Aus 208.....	968(T)	AX 0822E	976(T)
Aus 235.....	956, 969(T), 971(T)	AX 4620F	983(T)
Aus 236.....	956, 969(T), 970(T)	AX 60105.....	962
Aus 237.....	969(T)	AX 60193.....	967(T)
Aus 238.....	969(T)	AX 60260	976(T)
Aus 242.....	973(T)	AX 60377	982(T)
Aus 243.....	973(T)	AX 6202F.....	953
Aus 244.....	957, 974(T)	AX 63262.....	980(T)
Aus 245.....	957, 974(T), 975(T)	AX 67192.....	967(T)
Aus 255.....	977(T), 978(T)	AX 67261.....	976(T)
Aus 256.....	979(T)	AX 70193.....	967(T)
Aus 260.....	976(T)	AX 72026	959
Aus 261.....	976(T)	AX 72722.....	959
Aus 262.....	980(T), 981(T)		
Aus 263.....	980(T)		
Aus 270.....	958		
Aus 286.....	949		
Aus 301.....	984(T)		
Aus 324.....	986(T)		
Aus 326.....	987(T)		
Aus 327.....	987(T)		
Aus 336.....	964		
Aus 337.....	964		
Aus 349.....	992(T)		
Aus 367.....	976(T)		
Aus 377.....	982(T)		
Aus 378.....	982(T), 983(T)		
Aus 379.....	982(T)		
Aus 487.....	992(T)		
Aus 490.....	976(T)		
Aus 502.....	983(T)		

949 AUSTRALIA - Product

Australian Hydrographic Service (AA556257, AA557533)

New Chart

<i>Chart</i>	<i>Published</i>	<i>Title and description of amendments</i>	<i>Scale</i>	<i>Index Chart</i>	<i>Price</i>
Aus 286	23/9/2011	Australian - East Coast - Coral Sea - Ashmore Reef 10° 02'.0 S - 10° 30'.0 S 144° 20'.0 E - 144° 37'.9 E <i>New chart providing improved coverage of Ashmore Reef.</i>	1:50 000	Aus 5000	\$35.00

New Miscellaneous Edition

<i>Chart</i>	<i>Title</i>	<i>Scale</i>	<i>Remarks</i>
AX 0110E	Australia - South Coast - Western Australia - King George Sound Plan: Oyster Harbour	1:75 000	Fleet use only.

Australian National Tide Tables 2012

<i>No</i>	<i>Title</i>	<i>Recommended Retail Price (incl GST)</i>	<i>Remarks</i>
AHP 11	Australian National Tide Tables (ANTT) 2012	\$64.90	Australian National Tide Tables 2012 for Australia, Antarctica, Papua New Guinea, Solomon Islands and East Timor. Available from accredited chart agents.
AHP 114	Austides 2012	\$59.95	Electronic Tide Tables (Austides) 2012 for Australia, Antarctica, Papua New Guinea, Solomon Islands and East Timor. Provides tidal data for 2011 and 2012. Available from accredited chart agents and Seafarer® product distributors.

Note: Australian National Tide Tables 2012 will be available from early October.

Note: Edition 17, dated 26 August 2011, notice to mariners 858/2011 incorrectly refers to Aus 753 as NC 28/7/2011, this should read 685/2011.

For further details refer to the AHS website at www.hydro.gov.au for new edition and new chart stock arrival information.

When placing orders with a chart agent, mariners should advise whether their order pertains to the current edition or the new edition.

950 AUSTRALIA - Product - Amendment to Australian Notice to Mariners No 2

Australian Hydrographic Service (AA554330)

Page 14

Insert new chart agent:**Boat Books NZ**22 Westhaven Drive
Auckland 1010

Telephone (64 9) 358 5691
Fax (64 9) 358 5817
Email crew@boatbooks.co.nz
Website www.boatbooks.co.nz

C**951 AUSTRALIA - Product - Amendment to Australian National Tide Tables**

Australian Hydrographic Service (AA556782)

Page xxxii

Insert Dampier To Chart Datum AUS 60 NC 9 SEP 2011 0.0*Amend* Dampier To Chart Datum AUS 59 NC 9 SEP 2011 0.0

Page 398

Amend Norwegian Bay To Chart Datum to 0.0*Amend* Point Murat To Chart Datum to 0.0

952* AUSTRALIA - NEW SOUTH WALES - Bate Bay - Contour

Australian Hydrographic Service (AA554855)

Aus 197 [888/2011]

Insert	contour to enclose depth, 14 ₉ m	34° 03'.64 S	151° 10'.86 E
--------	---	--------------	---------------

953* AUSTRALIA - NEW SOUTH WALES - Port Jackson - Johnstons Bay - Depths

Sydney Ports Corporation (DHDB 851901)

Aus 200 [399/2011]

Insert	depth, 11 ₈ m	33° 52'.009 S	151° 11'.211 E
	depth, 12 ₈ m	33° 51'.833 S	151° 11'.336 E

Delete	depth, 12 ₄ m	33° 51'.97 S	151° 11'.27 E
	depth, 13m	33° 51'.82 S	151° 11'.33 E

Aus 202 [399/2011]

Insert	accompanying block	33° 52'.0 S	151° 11'.2 E
--------	--------------------	-------------	--------------

AX 6202F [399/2011]

Insert	accompanying block	33° 52'.0 S	151° 11'.2 E
--------	--------------------	-------------	--------------

954* AUSTRALIA - TASMAN SEA - Lord Howe Island - Depths

Geoscience Australia (DHDB 1708775)

Aus 610 [948/2010]

Insert	depth, 325m, enclosed by contour	31° 39'.04 S	159° 15'.35 E
	depth, 395m, enclosed by contour	31° 39'.85 S	159° 15'.45 E
	depth, 707m	31° 39'.62 S	159° 16'.59 E

Delete	depth, 561m	31° 39'.2 S	159° 15'.7 E
	depth, 165m, and enclosing contour with legend, Rep (1984)	31° 41'.5 S	159° 09'.5 E
	depth, 152m, and enclosing contour with legend, Rep (1984)	31° 41'.3 S	159° 11'.0 E

955* AUSTRALIA - NEW SOUTH WALES - Shelley Beach Head - Wreck

NSW Maritime (AA554333)

Aus 812 [730/2011]

Insert	safe clearance depth, 40m, enclosed by danger circle with legend, <i>Wk</i>	29° 32'.49 S	153° 26'.50 E
--------	---	--------------	---------------

Aus 813 [730/2011]

Insert	safe clearance depth, 40m, enclosed by danger circle with legend, <i>Wk</i>	29° 32'.49 S	153° 26'.50 E
--------	---	--------------	---------------

Aus 4643 (INT 643) [887/2011]

Insert	safe clearance depth, 40m, enclosed by danger circle with legend, <i>Wk</i>	29° 32'.5 S	153° 26'.5 E
--------	---	-------------	--------------

956* AUSTRALIA - QUEENSLAND - Moreton Bay - Outer Freeman Channel to North Banks - Fish haven
 Maritime Safety Queensland Notices 771/2011, 776/2011 (AA550913, AA551115)

Aus 235 [889/2011]

Insert	fish haven, between	26° 58'.95 S	153° 23'.20 E
		26° 59'.61 S	153° 24'.15 E
		26° 59'.19 S	153° 24'.52 E
		26° 58'.52 S	153° 23'.57 E
		26° 58'.95 S	153° 23'.20 E
	fish haven, between	26° 54'.36 S	153° 16'.92 E
		26° 55'.04 S	153° 17'.86 E
		26° 54'.66 S	153° 18'.20 E
		26° 54'.00 S	153° 17'.27 E
		26° 54'.36 S	153° 16'.92 E
Delete	depth, 13 ₃ m contour, between	26° 59'.2 S	153° 23'.8 E
		26° 59'.1 S	153° 24'.4 E
	contour, between	26° 58'.6 S	153° 23'.5 E
		26° 55'.0 S	153° 17'.9 E
		26° 54'.7 S	153° 17'.4 E

Aus 236 [889/2011]

Insert	fish haven, between	26° 58'.95 S	153° 23'.20 E
		26° 59'.61 S	153° 24'.15 E
		26° 59'.19 S	153° 24'.52 E
		26° 58'.52 S	153° 23'.57 E
		26° 58'.95 S	153° 23'.20 E
Delete	depth, 13 ₃ m contour, between	26° 59'.2 S	153° 23'.8 E
		26° 59'.1 S	153° 24'.4 E
		26° 58'.6 S	153° 23'.5 E

Aus 814 [889/2011]

Insert	fish haven, between	26° 58'.95 S	153° 23'.20 E
		26° 59'.61 S	153° 24'.15 E
		26° 59'.19 S	153° 24'.52 E
		26° 58'.52 S	153° 23'.57 E
		26° 58'.95 S	153° 23'.20 E
Delete	contour, between	26° 59'.1 S	153° 24'.4 E
		26° 58'.6 S	153° 23'.5 E

Aus 815 [889/2011]

Insert	fish haven, between	26° 58'.95 S	153° 23'.20 E
		26° 59'.61 S	153° 24'.15 E
		26° 59'.19 S	153° 24'.52 E
		26° 58'.52 S	153° 23'.57 E
		26° 58'.95 S	153° 23'.20 E
	fish haven, between	26° 54'.36 S	153° 16'.92 E
		26° 55'.04 S	153° 17'.86 E
		26° 54'.66 S	153° 18'.20 E
		26° 54'.00 S	153° 17'.27 E
		26° 54'.36 S	153° 16'.92 E
Delete	contour, between	26° 59'.1 S	153° 24'.4 E
		26° 58'.6 S	153° 23'.5 E
	contour, between	26° 55'.0 S	153° 17'.9 E
		26° 54'.7 S	153° 17'.4 E

957* AUSTRALIA - QUEENSLAND - Gladstone - Facing Channel to Quoin Channel - Small craft mooring areas
 Maritime Safety Queensland Notice 845/2011 (AA554337)

Aus 244 (plan, Entrance to North Channel) [1224/2010]

Insert dashed line with legend, *Small Craft Moorings*,
 between

23° 49'.167 S 151° 17'.050 E
 23° 49'.090 S 151° 17'.050 E
 23° 48'.930 S 151° 16'.720 E
 23° 48'.782 S 151° 16'.547 E

dashed line with legend, *Small Craft Moorings*,
 between

23° 49'.167 S 151° 19'.398 E
 23° 49'.050 S 151° 19'.310 E
 23° 49'.110 S 151° 19'.020 E
 23° 49'.167 S 151° 19'.048 E

Aus 244 (plan, Gladstone and Adjacent Wharves)

Insert dashed line with legend, *Small Craft Moorings*,
 between

23° 49'.143 S 151° 16'.273 E
 23° 49'.300 S 151° 16'.440 E
 23° 49'.493 S 151° 16'.813 E

Aus 245 [735/2011]

Insert dashed line with legend, *Small Craft Moorings*,
 between

23° 48'.75 S 151° 16'.51 E
 23° 48'.87 S 151° 16'.39 E
 23° 49'.13 S 151° 16'.26 E
 23° 49'.30 S 151° 16'.44 E
 23° 50'.00 S 151° 17'.79 E
 23° 49'.84 S 151° 17'.87 E
 23° 49'.55 S 151° 17'.65 E
 23° 49'.26 S 151° 17'.05 E
 23° 49'.09 S 151° 17'.05 E
 23° 48'.93 S 151° 16'.72 E
 23° 48'.75 S 151° 16'.51 E

dashed line with legend, *Small Craft Moorings*,
 between

23° 49'.11 S 151° 19'.02 E
 23° 50'.12 S 151° 19'.50 E
 23° 50'.23 S 151° 19'.72 E
 23° 50'.14 S 151° 19'.90 E
 23° 49'.43 S 151° 19'.59 E
 23° 49'.05 S 151° 19'.31 E
 23° 49'.11 S 151° 19'.02 E

958* AUSTRALIA - QUEENSLAND - Channel Rocks - Light buoy established

Former Notice - 659(P)/2011 is cancelled

Auscoast Warning 221/2011 (AA553433), Australian Maritime Safety Authority Final ATH 9/2011 (AA553617)

Aus 270 (plan, Cape Melville and Pipon Islets) [790/2011]

Insert starboard lateral pillar light buoy, *Fl.G.5s*, with
 topmark

14° 08'.3 S 144° 29'.0 E

959* AUSTRALIA - NORTHERN TERRITORY - Darwin - East Arm to Middle Pass - AIS; mooring buoy*Former Notice - 712(T)/2011 is cancelled*

Darwin Port Corporation (AA555410, AA555411)

Aus 24 [506/2011]

Move	light buoy	12° 28'.02 S	130° 49'.50 E
	to	12° 28'.035 S	130° 49'.465 E

Insert	magenta circle, with legend <i>AIS</i> , at light buoy	12° 28'.79 S	130° 51'.32 E
	magenta circle, with legend <i>AIS</i> , at light buoy	12° 28'.04 S	130° 49'.47 E
	depth, <i>4m</i>	12° 28'.018 S	130° 49'.505 E

Aus 26 [456/2011]

Move	light buoy	12° 20'.2 S	130° 41'.8 E
	to	12° 20'.24 S	130° 41'.76 E
	light buoy	12° 28'.0 S	130° 49'.5 E
	to	12° 28'.04 S	130° 49'.47 E

Insert	magenta circle, with legend <i>AIS</i> , at light buoy	12° 20'.24 S	130° 41'.76 E
	magenta circle, with legend <i>AIS</i> , at light buoy	12° 23'.52 S	130° 44'.68 E
	magenta circle, with legend <i>AIS</i> , at light buoy	12° 25'.05 S	130° 46'.97 E
	magenta circle, with legend <i>AIS</i> , at light buoy	12° 28'.04 S	130° 49'.47 E
	magenta circle, with legend <i>AIS</i> , at light buoy	12° 28'.79 S	130° 51'.32 E
	lit yellow cylindrical mooring buoy, <i>Fl. Y. 1-5s</i>	12° 29'.75 S	130° 53'.93 E

Aus 28 [456/2011]

Insert	magenta circle, with legend <i>AIS</i> , at light buoy	12° 28'.787 S	130° 51'.321 E
	lit yellow cylindrical mooring buoy, <i>Fl. Y. 1-5s</i>	12° 29'.750 S	130° 53'.933 E

Aus 722 [796/2011]

Insert	magenta circle, with legend <i>AIS</i> , at light buoy	12° 20'.24 S	130° 41'.76 E
	magenta circle, with legend <i>AIS</i> , at light buoy	12° 23'.52 S	130° 44'.68 E

AX 72026 [456/2011]

Move	light buoy	12° 20'.2 S	130° 41'.8 E
	to	12° 20'.24 S	130° 41'.76 E
	light buoy	12° 28'.0 S	130° 49'.5 E
	to	12° 28'.04 S	130° 49'.47 E

Insert	magenta circle, with legend <i>AIS</i> , at light buoy	12° 20'.24 S	130° 41'.76 E
	magenta circle, with legend <i>AIS</i> , at light buoy	12° 23'.52 S	130° 44'.68 E
	magenta circle, with legend <i>AIS</i> , at light buoy	12° 25'.05 S	130° 46'.97 E
	magenta circle, with legend <i>AIS</i> , at light buoy	12° 28'.04 S	130° 49'.47 E
	magenta circle, with legend <i>AIS</i> , at light buoy	12° 28'.79 S	130° 51'.32 E
	lit yellow cylindrical mooring buoy, <i>Fl. Y. 1-5s</i>	12° 29'.75 S	130° 53'.93 E

AX 72722 [796/2011]

Insert	magenta circle, with legend <i>AIS</i> , at light buoy	12° 20'.24 S	130° 41'.76 E
	magenta circle, with legend <i>AIS</i> , at light buoy	12° 23'.52 S	130° 44'.68 E

960* AUSTRALIA - WESTERN AUSTRALIA - Dampier - ZOC diagram; chart limits; light buoy
 Australian Hydrographic Service (AA553629)

Aus 58 [1308/2010]

Insert	magenta limits, with legend <i>Aus 59</i> in NW corner, between	20° 38'.52 S	116° 42'.55 E
		20° 38'.52 S	116° 46'.30 E
		20° 32'.46 S	116° 46'.30 E
		20° 32'.46 S	116° 42'.55 E
		20° 38'.52 S	116° 42'.55 E
	magenta limits, with legend <i>Aus 60</i> in NE corner, between	20° 40'.15 S	116° 38'.15 E
		20° 40'.15 S	116° 41'.30 E
		20° 40'.50 S	116° 41'.30 E
		20° 40'.50 S	116° 42'.10 E
		20° 40'.15 S	116° 42'.10 E
		20° 40'.15 S	116° 44'.10 E
		20° 36'.60 S	116° 44'.10 E
		20° 36'.60 S	116° 38'.15 E
		20° 40'.15 S	116° 38'.15 E
Substitute	accompanying ZOC diagram	20° 39'.5 S	116° 47'.0 E
Delete	magenta limits, with legend <i>Aus 59</i> , centred on light buoy	20° 37'.0 S	116° 44'.0 E
		20° 32'.96 S	116° 43'.13 E

961* AUSTRALIA - WESTERN AUSTRALIA - Barrow Island - Town Point - Infrastructure; depths; nav aids

Former Notices - 75(T)/2010, 435(T)/2011 are cancelled
 Geoscience Australia (DHDB 830039)

Aus 62 [684/2011]

Insert	accompanying plan	20° 49'.0 S	115° 40'.0 E
	accompanying block	20° 48'.5 S	115° 29'.0 E

962* AUSTRALIA - WESTERN AUSTRALIA - Lancelin - Light beacon

Australian Hydrographic Service (AA550892, AA553501)

Aus 105 [858/2011]

Substitute	starboard lateral light beacon, <i>Fl.G.</i> 3s, with topmark for beacon	31° 00'.3 S	115° 19'.3 E
------------	--	-------------	--------------

AX 60105 [858/2011]

Substitute	starboard lateral light beacon, <i>Fl.G.</i> 3s, with topmark for beacon	31° 00'.3 S	115° 19'.3 E
------------	--	-------------	--------------

963* AUSTRALIA - WESTERN AUSTRALIA - Fremantle - Legend

UKHO (AA554861)

Aus 113 [NE 12/8/2011]

Amend	legend to <i>2F.R 040.2°</i>	32° 03'.18 S	115° 44'.29 E
-------	------------------------------	--------------	---------------

964* AUSTRALIA - WESTERN AUSTRALIA - Cape Vancouver - Wrecks

Australian Hydrographic Service (AA555963, AA555989)

Aus 110 [905/2011]

Substitute	safe clearance depth, 50m, enclosed by danger circle with legend, Wk for wreck	35° 02'.31 S	118° 08'.36 E
------------	--	--------------	---------------

Delete	depth, 61m	35° 02'.31 S	118° 08'.28 E
--------	------------	--------------	---------------

Aus 118 [689/2011]

Insert	safe clearance depth, 50m, enclosed by danger circle with legend, Wk	35° 02'.31 S	118° 08'.36 E
--------	--	--------------	---------------

Delete	wreck	35° 01'.6 S	118° 08'.3 E
--------	-------	-------------	--------------

Aus 336 [NE 2/7/2010]

Insert	safe clearance depth, 50m, enclosed by danger circle with legend, Wk	35° 02'.31 S	118° 08'.36 E
--------	--	--------------	---------------

Delete	wreck	35° 01'.6 S	118° 08'.3 E
--------	-------	-------------	--------------

Aus 337 [303/2010]

Insert	safe clearance depth, 50m, enclosed by danger circle with legend, Wk	35° 02'.31 S	118° 08'.36 E
--------	--	--------------	---------------

Delete	wreck	35° 01'.6 S	118° 08'.3 E
--------	-------	-------------	--------------

Aus 759 [689/2011]

Insert	safe clearance depth, 50m, enclosed by danger circle with legend, Wk	35° 02'.31 S	118° 08'.36 E
--------	--	--------------	---------------

Delete	wreck	35° 01'.6 S	118° 08'.3 E
--------	-------	-------------	--------------

AX 0118E [689/2011]

Insert	safe clearance depth, 50m, enclosed by danger circle with legend, Wk	35° 02'.31 S	118° 08'.36 E
--------	--	--------------	---------------

Delete	wreck and enclosing circle	35° 01'.6 S	118° 08'.3 E
--------	----------------------------	-------------	--------------

965* AUSTRALIA - WESTERN AUSTRALIA - Bandy Creek - Light

Department of Transport WA (AA556076, AA556077)

Aus 119 (plan, Bandy Creek Boat Harbour) [485/2010]

Insert	light, Fl.G.3s	33° 50'.067 S	121° 55'.973 E
--------	----------------	---------------	----------------

Delete	light beacon	33° 50'.07 S	121° 55'.95 E
--------	--------------	--------------	---------------

966* AUSTRALIA - SOUTH AUSTRALIA - Thevenard - Yatala Channel - Light beacons altered
 Department of Transport, Energy and Infrastructure SA Notice 35/2011 (AA556104)

Aus 120 [146/2011]

Amend	light beacon to <i>Oc.R.6s</i>	32° 11'.4 S	133° 35'.4 E
	light beacon to <i>Fl.R.3s</i>	32° 11'.2 S	133° 35'.8 E

Aus 122 [146/2011]

Amend	light beacon to <i>Oc.R.6s No2</i>	32° 11'.31 S	133° 35'.49 E
	light beacon to <i>Fl.G.3s No3</i>	32° 11'.17 S	133° 35'.83 E
	light beacon to <i>Fl.R.3s No4</i>	32° 11'.07 S	133° 35'.85 E
	light beacon to <i>Fl.G.3s No5</i>	32° 11'.12 S	133° 35'.97 E
	light beacon to <i>Fl.G.3s No7</i>	32° 11'.10 S	133° 36'.19 E
	light beacon to <i>Fl.R.3s No8</i>	32° 11'.07 S	133° 36'.46 E
	light beacon to <i>Fl.G.3s No9</i>	32° 11'.13 S	133° 36'.45 E
	light beacon to <i>Oc.G.6s No11</i>	32° 11'.27 S	133° 37'.66 E
	light beacon to <i>Oc.R.6s No12</i>	32° 11'.17 S	133° 37'.59 E
	light beacon to <i>Fl.R.3s No14</i>	32° 11'.11 S	133° 37'.73 E
	light beacon to <i>Fl.G.3s No15</i>	32° 11'.02 S	133° 37'.95 E
	light beacon to <i>Fl.R.3s No16</i>	32° 10'.98 S	133° 37'.88 E
	light beacon to <i>Fl.G.3s No17</i>	32° 10'.81 S	133° 38'.06 E
	light beacon to <i>Fl.R.3s No18</i>	32° 10'.79 S	133° 37'.98 E
	light beacon to <i>Q.G No19</i>	32° 10'.53 S	133° 38'.09 E
	light beacon to <i>Q.R No20</i>	32° 10'.53 S	133° 38'.01 E
	light range to <i>4M</i>	32° 11'.27 S	133° 35'.69 E

967(T)/2011 AUSTRALIA - NEW SOUTH WALES - Jervis Bay - Raft removed*Former Notice - 807(T)/2011 is cancelled*

Department of Defence (AA548710)

Cancel this notice on receipt.

Chart formerly affected – Aus 193 – AX 60193 – AX 67192 – AX 70193**968(T)/2011 AUSTRALIA - NEW SOUTH WALES - Newcastle - Depth information***Former Notice - 866(T)/2011 is cancelled*

Newcastle Port Corporation (AA556227)

Available depths as at 13 September 2011:

<i>Berth</i>	<i>Metres</i>
Western Basin 3	11.6
Western Basin 4	11.6
Eastern Basin 1	11.6
Eastern Basin 2 North of Ch 450	11.6
Eastern Basin 2 South of Ch 450	11.0
Channel Berth	8.3
Dyke 1	12.5
Dyke 2	12.8
* Dyke 4	16.3
* Dyke 5	16.3
Dyke 6	6.3
Mayfield 4 Ch 27 to 266	12.6
BHP Wharf 6 to Ch 1050	7.9
Kooragang 2	11.4
Kooragang 2 North Dolphin Ch 182 to 228	11.1
Kooragang 2 South Dolphin Ch -92 to 00	10.9
Kooragang 3	13.0
Kooragang 4	16.2
Kooragang 5	16.5
Kooragang 6	16.5
* Kooragang 8	16.5
* Kooragang 9	16.5
Kooragang Ship Receival KSR	7.5
Throsby 1	8.4
Carrington Wharf	To be sounded as and when required
Foreshore Park Berth	5.9
Elgo Wharf	To be sounded as and when required
<i>Channels</i>	
Entrance Approach	17.7
Entrance Channel (18.0m)	18.0
Entrance Channel (17.4m)	17.4
Entrance Channel (16.8m)	16.8
Entrance Channel (16.2m)	16.2
Entrance Channel to Horseshoe	15.2
Horseshoe	15.0
Steelworks Channel to Swinging Basin	15.0
Swinging Basin	15.0
Swinging Basin to Mayfield 4	12.8
Hunter River South Arm (Kooragang 6 to Kooragang 9)	15.0
Basin Cutting	12.8
Basin Area to Eastern & Western Basin Berths	12.3
Basin Area to 1 Throsby	10.0
Stockton Crossing	3.6

* Indicates revised entry.

Chart temporarily affected – Aus 207 – Aus 208

969(T)/2011 AUSTRALIA - QUEENSLAND - Moreton Bay - Brisbane River - Depth information*Former Notice - 911(T)/2011 is cancelled*

Brisbane Port Corporation (AA556231)

Available depths and under keel clearances (UKC) at 14 September 2011:

<i>Berth</i>	<i>Metres</i>	<i>Remarks</i>
Fisherman Islands No10	14.0	
Fisherman Islands No9	14.0	
Fisherman Islands No8	14.0	
Fisherman Islands No7	14.1	
* Fisherman Islands No6	14.1	
Fisherman Islands No5	14.0	
* Fisherman Islands No4	14.0	
Fisherman Islands No3	14.0	
Fisherman Islands No2	14.0	
Fisherman Islands No1	14.0	
Fisherman Islands Grain and Woodchip	13.0	
* Caltex Fisherman Islands	14.8	
Fisherman Islands Coal	14.2	
Fisherman Islands General Purpose	11.6	
BP Luggage Point	14.3	
Caltex Products	9.8	
Cement Australia Co Wharf	9.8	
BP Products	10.7	
* Shell	10.9	
Pacific Terminals	11.0	
Incitec North	10.0	
* Incitec South	10.4	
Pinkenba 1	10.4	
Pinkenba 2	10.4	
Riverside Marina	-	
Sugar Terminal	9.8	
Cairncross Fitting Out Wharf	8.2	
Cairncross Breasting Wharf	6.5	
Brisbane Naval Wharf	-	
Maritime No3	5.6	(not maintained)
Maritime No2	7.8	
Maritime No1	9.0	
Hamilton No4	10.4	
Hamilton No1	8.8	
Brisbane Cruise Ship Terminal	9.4	
	<i>Metres</i>	<i>UKC/Remarks</i>
<i>Moreton Bay :</i>		
North East Channel	5.5	1.5
North West Channel	15.0	2.3 (280m width)
North West Bypass Channel	9.2	1.6
Spitfire Channel	15.0	1.5 (600m width)
East Knoll Bypass Channel	6.9	1.4
East Channel	15.0	1.5 (300m width from western side)
Main Channel (M8 - M9)	10.0	1.8
Entrance Channel (E5 - EBCN)	14.7	1.5
<i>Brisbane River :</i>		
Entrance Beacons and Bar Cutting	14.0	1.46
Fisherman Islands Swing Basin	14.0	1.3
Pelican Banks Reach to Hamilton Reach	9.0	0.6 / 0.9 (draft/tide)
Cement Australia Swing Basin	9.0	0.6 / 0.9 (draft/tide)
Pinkenba Swing Basin	9.0	0.6 / 0.9 (draft/tide)
Hamilton Swing Basin	8.8	0.6 / 0.9 (draft/tide)

* Indicates new or revised entry.

Chart temporarily affected – Aus 235 – Aus 236 – Aus 237 – Aus 238 – Aus 814 – Aus 815

970(T)/2011 AUSTRALIA - QUEENSLAND - Moreton Bay - Ship to ship transfer*Former Notice - 755(T)/2011 is cancelled**Date - Until 15 October 2011*

Maritime Safety Queensland Notice 866(T)/2011 (AA556311)

Ship to ship transfer of LPG will be conducted at STS1 anchorage (27° 17'.25 S 153° 16'.56 E). An exclusion zone (1850 metres radius) exists around transfer operations.

Chart temporarily affected – Aus 236**971(T)/2011 AUSTRALIA - QUEENSLAND - Mooloolaba - Shoaling***Former Notice - 917(T)/2011 is cancelled*

Maritime Safety Queensland Notice 876(T)/2011 (AA556298)

Shoaling with a least depth of 1.8m exists within the main entrance channel to Mooloolah River (26° 40'.75 S 153° 07'.91 E).

Mariners are advised to navigate with caution in the area.

Chart temporarily affected – Aus 235**972(T)/2011 AUSTRALIA - QUEENSLAND - Point Arkwright - Scientific instruments***Date - Until 31 October 2011*

Maritime Safety Queensland Notice 872(T)/2011 (AA556309)

Scientific instruments marked by special light buoys, *Fl. Y.3s*, exist in positions:

26° 29'.25 S 153° 06'.78 E

26° 29'.66 S 153° 06'.71 E

26° 30'.12 S 153° 06'.60 E

26° 29'.70 S 153° 07'.10 E

26° 29'.78 S 153° 07'.35 E.

Chart temporarily affected – Aus 815**973(T)/2011 AUSTRALIA - QUEENSLAND - Bundaberg - Depth information***Former Notice - 264(T)/2011 is cancelled*

Maritime Safety Queensland Notice 884(T)/2011 (AA557170)

Available depths as at 19 September 2011:

	<i>Metres</i>
* Sea Reach	7.7
* Middle Reach	7.7
* Inner Reach	7.7
* Swing Basin	5.5
* Oil Berth	5.9
* BST Berth	7.9
* Deep draught departure channel	7.7

* Indicates revised entry.

Chart temporarily affected – Aus 242 – Aus 243**974(T)/2011 AUSTRALIA - QUEENSLAND - Gladstone - Scientific instruments recovered***Former Notice - 1390(T)/2010 is cancelled*

Maritime Safety Queensland (AA556273)

Cancel this notice on receipt.

Chart formerly affected – Aus 244 – Aus 245

975(T)/2011 AUSTRALIA - QUEENSLAND - Gladstone - Curtis Island - Dredging operations completed*Former Notice - 562(T)/2011 is cancelled*

Maritime Safety Queensland (AA556273)

Cancel this notice on receipt.

Chart formerly affected – Aus 245**976(T)/2011 AUSTRALIA - QUEENSLAND - Shoalwater Bay - Live firing***Date - Until 11 November 2011*

Maritime Safety Queensland Notice 829(T)/2011 (AA553616)

Live firing activities will be conducted in the Shoalwater Bay training area during the period 27 September to 10 November 2011.

A marine danger area extends to all internal waters bounded by the following positions:

22° 23'.84 S 150° 18'.02 E

22° 14'.76 S 150° 20'.31 E

22° 10'.02 S 150° 30'.06 E

22° 16'.19 S 150° 39'.47 E

22° 24'.20 S 150° 39'.11 E

22° 40'.00 S 150° 38'.00 E

22° 35'.87 S 150° 28'.80 E

22° 24'.75 S 150° 17'.35 E

22° 23'.84 S 150° 18'.02 E.

All waters, creeks, beaches and other areas within the declared marine danger area are not available for access.

Mariners are advised to keep clear of this area throughout the above times.

Chart temporarily affected – Aus 260 – Aus 261 – Aus 367 – Aus 490 – Aus 820 – Aus 822 – AX 0260E – AX 0367E – AX 0820E – AX 0822E – AX 60260 – AX 67261**977(T)/2011 AUSTRALIA - QUEENSLAND - Abbot Bay - Clark Shoal - Drilling operations completed***Former Notice - 475(T)/2011 is cancelled*

Maritime Safety Queensland (AA556805)

Cancel this notice on receipt.

Chart formerly affected – Aus 255**978(T)/2011 AUSTRALIA - QUEENSLAND - Abbot Point - Scientific instrument recovered***Former Notice - 615(T)/2011 is cancelled*

Maritime Safety Queensland (AA556845)

Cancel this notice on receipt.

Chart formerly affected – Aus 255**979(T)/2011 AUSTRALIA - QUEENSLAND - Townsville - Obstructions removed***Former Notice - 565(T)/2011 is cancelled*

Maritime Safety Queensland (AA556825)

Cancel this notice on receipt.

Chart formerly affected – Aus 256 – Aus 827

980(T)/2011 AUSTRALIA - QUEENSLAND - Cairns - Dredging operations completed*Former Notice - 478(T)/2011 is cancelled*

Maritime Safety Queensland (AA556807)

Cancel this notice on receipt.

Chart formerly affected – Aus 262 – Aus 263 – AX 63262**981(T)/2011 AUSTRALIA - QUEENSLAND - Yorkeys Knob - Dredging operations completed***Former Notice - 529(T)/2011 is cancelled*

Maritime Safety Queensland (AA556807)

Cancel this notice on receipt.

Chart formerly affected – Aus 262 – Aus 830**982(T)/2011 PAPUA NEW GUINEA - Port Moresby to Kerema Bay - Seismic survey***Date - Until 20 December 2011*

National Maritime Safety Authority PNG Notice 35/2011 (AA556509)

RV *BGP Prospector* is conducting a survey in an area bounded by the following positions:

9° 23'.23 S 146° 22'.00 E

8° 47'.17 S 145° 52'.44 E

8° 49'.50 S 145° 49'.37 E

8° 34'.01 S 145° 36'.42 E

8° 31'.43 S 145° 39'.30 E

8° 26'.78 S 145° 35'.35 E

8° 19'.98 S 145° 43'.57 E

9° 15'.38 S 146° 30'.49 E.

Chart temporarily affected – Aus 377 – Aus 378 – Aus 379 – AX 60377**983(T)/2011 PAPUA NEW GUINEA - Gulf of Papua - Racon**

National Maritime Safety Authority PNG Notice 36/2011 (AA557392)

The racon (8° 03'.86 S 144° 33'.63 E) is temporarily discontinued.

Chart temporarily affected – Aus 378 – Aus 502 – Aus 4620 (INT 620) – Aus 4622 (INT 622) – AX 4620F**984(T)/2011 AUSTRALIA - QUEENSLAND - Boyd Point - Drilling operations completed***Former Notice - 770(T)/2011 is cancelled*

Maritime Safety Queensland Notice 869/2011 (AA556320)

Cancel this notice on receipt.

Chart formerly affected – Aus 301

985(T)/2011 AUSTRALIA - QUEENSLAND - Karumba - Depth information*Former Notice - 481(T)/2011 is cancelled*

Maritime Safety Queensland Notice 888(T)/2011 (AA557336)

Available depths as at 21 September 2011:

<i>Berth</i>	<i>Metres</i>
* Entrance Channel	2.9
Mobil/Trinity Wharf	6.3
Raptis Wharf	5.3
Ruby Marine Wharf	5.3
Gulf Freight Services Wharf	6.2
Karumba Cold Stores Wharf	6.2
Seaswift/Shell Wharf	6.2
Karumba Livestock Loading Wharf	5.4
Gulf Freight Services Ramp/Wharf	4.6
Pasminco Export Wharf	4.2

* Indicates revised entry.

Chart temporarily affected – Aus 6**986(T)/2011 AUSTRALIA - WESTERN AUSTRALIA - James Price Point - Survey operations***Former Notice - 773(T)/2011 is cancelled**Date - Until 30 November 2011*

Department of Transport Notice 121/2011 (AA557252)

Jack-up barge *Aran 120* and *Sideson 3* and support vessels *Fantasea Ammari*, *Wauri*, *Sea Wanderer* and *New Horizon* are conducting drilling operations in the area bounded by the following positions:

17°29'.15 S 122°05'.02 E
 17°29'.97 S 122°05'.02 E
 17°30'.24 S 122°06'.12 E
 17°32'.65 S 122°06'.14 E
 17°33'.31 S 122°06'.33 E
 17°33'.32 S 122°08'.78 E
 17°29'.66 S 122°08'.54 E.

Mariners should not pass within 100m of the barge.

Vessels associated with the operations will display appropriate lights and shapes and support vessels can be contacted on VHF Channels 12 and 16.

Mariners are advised to navigate with caution in the area.

Chart temporarily affected – Aus 324**987(T)/2011 AUSTRALIA - WESTERN AUSTRALIA - Delambre Island to Dixon Island - Drilling operations completed***Former Notice - 774(T)/2011 is cancelled*

Department of Transport (AA556811)

Cancel this notice on receipt.

Chart formerly affected – Aus 55 – Aus 57 – Aus 326 – Aus 327 – Aus 740 – Aus 741**988(T)/2011 AUSTRALIA - WESTERN AUSTRALIA - Barrow Island - Scientific instrument***Former Notice - 434(T)/2011 is cancelled**Date - Until 30 November 2011*

Department of Transport WA Notice 112/2011 (AA556389)

A special light buoy, *Fl(5)Y.20s*, exists in position 20° 47'.63 S 115° 29'.12 E.**Chart temporarily affected – Aus 62 – Aus 742**

989(T)/2011 AUSTRALIA - WESTERN AUSTRALIA - Bunbury - Scientific instrument recovered*Former Notice - 720(T)/2011 is cancelled*

Wave Solutions (AA556947)

Cancel this notice on receipt.

Chart formerly affected – Aus 115**990(P)/2011 AUSTRALIA - SOUTH AUSTRALIA - Thevenard - Yatala Channel - Light beacons to be altered***Date - On or about 13 October 2011*

Department of Transport, Energy and Infrastructure SA Notice 35/2011 (AA556104)

The light beacons will be altered as follows:

<i>No</i>	<i>Position</i>	<i>Characteristic</i>
No21	32° 10'.00 S 133° 37'.94 E	<i>Fl.G.3s</i>
No22	32° 10'.01 S 133° 37'.86 E	<i>Fl.R.3s</i>
No23	32° 09'.66 S 133° 37'.84 E	<i>Fl.G.3s</i>
No24	32° 09'.67 S 133° 37'.77 E	<i>Fl.R.3s</i>
No25	32° 09'.42 S 133° 37'.78 E	<i>Fl.G.3s</i>
No26	32° 09'.42 S 133° 37'.70 E	<i>Fl.R.3s</i>
No27	32° 09'.28 S 133° 37'.82 E	<i>Fl.G.3s</i>
No28	32° 09'.15 S 133° 37'.73 E	<i>Oc.R.6s</i>
No29	32° 09'.17 S 133° 37'.93 E	<i>Oc.G.6s.</i>

Chart which will be affected – Aus 122**991(T)/2011 AUSTRALIA - VICTORIA - Port Campbell - Lights unlit***Date - Until 18 October 2011*

Victorian Notice 113(T)/2011 (AA556905)

The lights, *Q.Bu.7m 4M* (38° 37'.27 S 142° 59'.48E) and *Iso.Bu.4s 12m 4M* (38° 37'.19 S 142° 59'.60E) are unlit.**Chart temporarily affected – Aus 141****992(T)/2011 AUSTRALIA - VICTORIA - Split Point - Light restored***Former Notice - 334(T)/2011 is cancelled*

Australian Maritime Safety Authority (AA556851)

Cancel this notice on receipt.

Chart formerly affected – Aus 349 – Aus 487 – Aus 788 – Aus 4644 (INT 644) – Aus 4728 (INT 728)**993(T)/2011 AUSTRALIA - VICTORIA - Port Phillip - Port Melbourne - River Yarra - Depth information***Former Notice - 446(T)/2011 is cancelled*

Victorian Notices 55(T)/2011, 57(T)/2011, 112/2011 (AA526917, AA526947, AA556512)

Available depths as at 16 September 2011:

<i>Berth</i>	<i>Metres</i>
Maribyrnong No1	9.6
Southern approaches to Maribyrnong No1 (north of 37° 49'.2 S)	10.0

Chart temporarily affected - Aus154

994(T)/2011 AUSTRALIA - VICTORIA - Western Port - French Island - Scientific instruments recovered

Former Notice - 537(T)/2011 is cancelled

Victorian Notice 66(T)/2011 (AA533679)

Cancel this notice on receipt.

Chart formerly affected – Aus 150 – Aus 151 – Aus 152

995(T)/2011 AUSTRALIA - Summer time

Date - Until 1 April 2012

Australian Government (AA556406)

Clocks will be advanced one hour at 0200 local time on 2 OCT 2011 and retarded one hour on 1 APR 2012 in the Australian Capital Territory, New South Wales, South Australia, Victoria and Tasmania.

No changes will be made in Queensland, Northern Territory and Western Australia.

HYDROGRAPHIC REPORTS

<i>Locality</i>	<i>Report</i>	<i>Ship/Authority</i>	<i>Observer</i>
BA Publication- NP286(4) Radio Signals Vol 6(4) 2011/12	Error	HydroSurvey Australia	
QLD – East Strait Island	ENC error	L-3 Communications Nautronix Limited	

NAVIGATION WARNINGS

The following radio messages have been received during the period to 23 September 2011. Signal copies of these messages may be destroyed. It is recommended that the reprint of Navigational Warnings should be kept in a file or a book divided into areas. Cancellation should be made on receipt of signals and reprints.

Rigs on location other than those listed in the latest Section III summary are the subject of Radio Navigational Warnings. Rigs in transit will not be the subject of Warnings.

AUSCOAST WARNING

227 Cancelled.
 228 Four yellow mooring buoys, Q, centred on position 20° 23'·0 S 111° 50'·0 E. 2.0M clearance requested.
 229 Cancelled.
 230 Cancelled.
 231 Cancelled.
 232 Cancelled.
 233 Cancelled.
 234 Drill rig *Ensco 109* in position 20° 31'·99 S 116° 40'·14 E. 2·5M clearance requested.
 235 Cancelled.
 236 Drill rig *Ocean America* in position 21° 31'·08 S 113° 52'·18 E. 2·5M clearance requested.
 237 Cancelled.
 238 Cancelled.

NAVAREA X WARNINGS

018 Cautionary notification for ships operating in the vicinity of Fukushima Japan.

In response to the situation at the Fukushima nuclear power plant in Japan, the Australian Radiation Protection and Nuclear Safety Agency (ARPANSA) and Australian Maritime safety Authority (AMSA) remind shipping that the evacuation and cautionary zones promulgated by Japan should be applied to ships transiting the area.

The evacuation (exclusion) zone currently extends 11M (20km) radius from the Fukushima nuclear power plant (37° 19'·0 N 141° 01'·0 E). Vessels should not transit within the evacuation zone and the master should observe any navarea warnings or other information in this regard.

The cautionary zone currently extends 16M (30km) radius from the Fukushima Nuclear Power Plant (37° 19'·0 N 141° 01'·0 E). Vessels should avoid transiting within the cautionary zone. Mariners are advised that this recommendation should be considered a minimum distance. Prudent route planning should incorporate prevailing and changing wind and weather conditions, in addition to the other precautionary measures.

In the event a vessel bound for an Australian port transits through the 16M (30 km) cautionary area, or where the vessel calls at the ports of (I) Onahama (36° 56'·0 N 140° 53'·0 E), (II) Haramachi (37° 40'·0 N 141° 00'·0 E) or (III) Soma (37° 50'·0 N 140° 58'·0 E).

It is requested the vessel's master submit transit information to ARPANSA, including the date and total time within the cautionary area or designated port, and certification that no contamination was found on the vessel. Such reports should be submitted via the AMSA incident reporting system details of which are provided at: www.amsa.gov.au/shipping_safety/incident_reporting/

An updated notice will be provided as additional guidance becomes available. Mariners should keep abreast of information being provided by the government of Japan relating to any further potential impacts.

Navigational warnings in force as at 230001UTC SEP 11.

Auscoast

2011 206 208 210 214 216 221 224 228 234 236

Navarea X

2011 017 018

Summary of mobile drilling rigs as at 230001UTC SEP 11.

<i>Name</i>	<i>Position</i>
Ocean Patriot	11° 57'·33 S 124° 36'·30 E
Ensco 109	20° 31'·99 S 116° 40'·14 E
Nan Hai 6	19° 28'·00 S 116° 38'·00 E
Atwood Osprey	20° 31'·12 S 114° 49'·26 E
Atwood Eagle	20° 12'·20 S 114° 47'·90 E
Maersk Discoverer	19° 24'·94 S 114° 20'·66 E
Ocean America	21° 31'·08 S 113° 52'·18 E
Transocean Legend	20° 04'·95 S 113° 49'·93 E

NAVAREA XIV WARNINGS

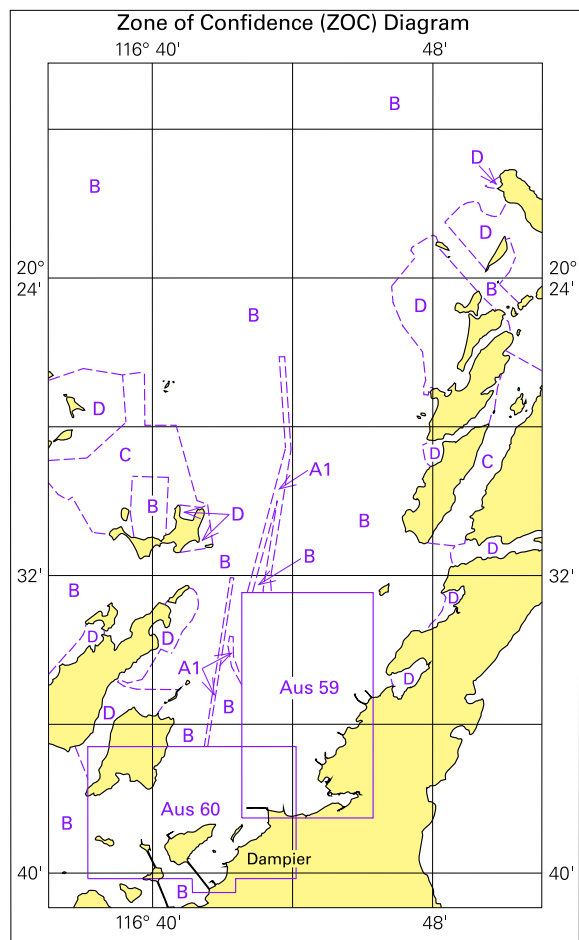
Nil.

Navarea XIV warnings in force as at 230001UTC SEP 11.

2011 084

(105.3 x 115.2mm)

To accompany Australian Notice to Mariners 959/2011



© Commonwealth of Australia 2011

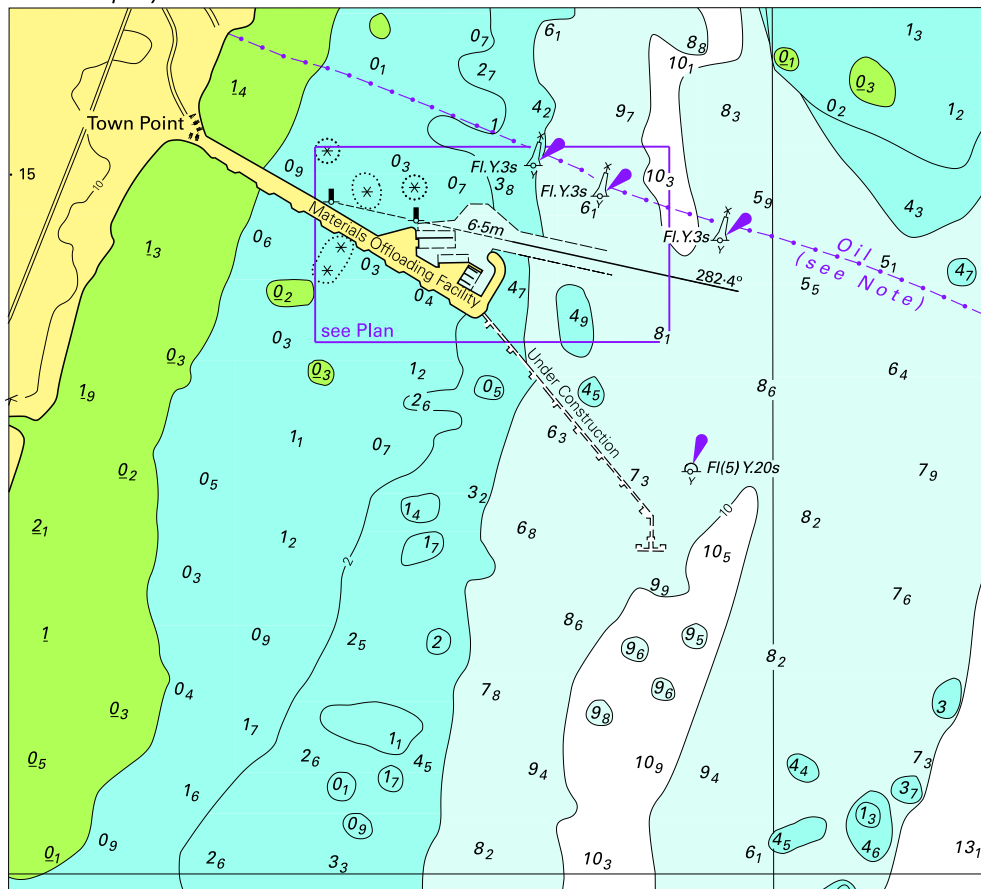
Block for chart Aus 58

(75.2 x 123.7mm)

© Commonwealth of Australia 2011

(249.9 x 145.0mm)

To accompany Australian Notice to Mariners 961/2011



Block for chart Aus 62

© Commonwealth of Australia 2011