



9 September 2011

Edition 18

Australian Notices to Mariners are the authority for correcting Australian Charts and Publications

AUSTRALIAN NOTICES TO MARINERS

Notices 885 – 948 

Published fortnightly by the Australian Hydrographic Service

Commodore R. NAIRN RAN
Hydrographer of Australia

SECTIONS.

- I. **Australian Notices to Mariners, including blocks and notes.**
- II. **Hydrographic Reports.**
- III. **Navigational Warnings.**

SUPPLEMENTS.

- I. **Tracings**
- II. **Cumulative List of Australian Notices to Mariners.**
- III. **Temporary and Preliminary Notices in force.**
- IV. **Amendments to Admiralty List of Lights and Fog Signals (Vol K),
Radio Signals (NP 281(2), 282, 283(2), 285, 286(4)) and Sailing
Directions (NP 9, 13, 14, 15, 33, 34, 35, 36, 39, 44, 51, 60, 61, 62, 100, 136).**

© Commonwealth of Australia 2011

This work is copyright. Apart from any use permitted under the Copyright Act 1968, no part may be reproduced by any process, adapted, communicated or commercially exploited without prior written permission from The Commonwealth represented by the Australian Hydrographic Service.

IMPORTANT NOTICE

This edition of Notices to Mariners includes all significant information affecting AHS products which the AHS has become aware of since the last edition. All reasonable efforts have been made to ensure the accuracy and completeness of the information, including third party information, on which these updates are based. The AHS regards third parties from which it receives information as reliable, however the AHS cannot verify all such information and errors may therefore exist. The AHS does not accept liability for errors in third party information.

GENERAL INSTRUCTIONS

The substance of these notices should be inserted on the charts affected.

Bearings are referred to the true compass and are reckoned clockwise from North; those relating to lights are given as seen by an observer from seaward. Positions quoted in permanent notices relate to the horizontal datum for the chart(s). When preliminary or temporary notices affect multiple charts, positions will be provided in relation to only one horizontal datum and that datum will be specified. When the multiple charts do not have a common horizontal datum, mariners will be required to adjust the position(s) for those charts not on the specified datum. The range quoted for a light is its nominal range. Depths are with reference to the chart datum of each chart. Heights are above mean high water springs or mean higher high water, as appropriate.

The capital letter (P) or (T) after the number of any notice denotes a preliminary or temporary notice respectively, which are contained separately at the end of the permanent notices. A star (*) adjacent to the number of a notice indicates that the notice is based on original information.

REPORTING OF DANGERS

Mariners are particularly requested to notify the AUSTRALIAN HYDROGRAPHIC SERVICE, Locked Bag 8801 Wollongong, NSW 2500 (Fax 02-4223 6599, e-mail Hydro.NTM@defence.gov.au or, alternatively by filling in and submitting the [Hydrographic Notes](#) forms located on the web site – www.hydro.gov.au), immediately on the discovery of new dangers or suspected dangers to navigation. For changes or defects in aids to navigation notify AusSAR (Fax 02-6230 6868 or email rccaus@amsa.gov.au).

AUTHORISED USE

Copies of Australian notices are available free of charge from the Australian Hydrographic Service (AHS) website (www.hydro.gov.au) and through the eNotices (email) service (www.hydro.gov.au/enotices/enotices.htm).

Individual Notices may be copied for the purpose of inserting Notice substance on official charts and publications. Paper copies may be printed by chart agents and distributed to customers on a cost recovery basis. Participating chart agents are listed on the AHS website as providing a 'Paper Notices to Mariners' service (www.hydro.gov.au/prodserv/distributors/distributors.htm). Copies of the notices may not be sold for profit without prior written agreement.

NUMERICAL INDEX OF NOTICES TO MARINERS

Edition No 18

Notices	Aus Chart, INT Chart, BA Pubs
885.....	Aus 59, 60, 286, 289, 296, 297, 753, AX 60377, 66003, NP 39
886.....	Aus 808, AX 0808E
887.....	Aus 489, 809, 4643, INT 643, AX 0809E
888.....	Aus 197, 204, 489, 809, AX 0809E
889.....	Aus 235, 236, 814, 815
890.....	Aus 254
891.....	Aus 828, 4620, INT 620, AX 4620F
892.....	Aus 262, 830, AX 6027S, 63262
893.....	Aus 832
894.....	Aus 834, 835, 836
895.....	Aus 397
896.....	Aus 296, 700
897.....	Aus 312, AX 0312F
898.....	Aus 920
899.....	Aus 50
900.....	Aus 327, 741, 4603, 4708, 4722, 4723, INT 603, 708, 722, 723, AX 4603F, 4708F, 4722F, 4723F
901.....	Aus 327, 742, 743
902.....	Aus 744, 745, 746
903.....	Aus 112, 117, 754, AX 0754E, 63112, 66002, 70117
904.....	Aus 114, 117, AX 70117
905.....	Aus 110, AX 0110E
906.....	Aus 172
907.....	Aus 158
908(T).....	Aus 198, 199
909(T).....	Aus 230, 814
910(T).....	Aus 230
911(T).....	Aus 235, 236, 237, 238, 814, 815
912(T).....	Aus 236
913(T).....	Aus 236
914(T).....	Aus 236, 237
915(T).....	Aus 236
916(T).....	Aus 235, 236
917(T).....	Aus 235
918(T).....	Aus 235, 815
919(P).....	Aus 242
920(T).....	Aus 244, 245, 819
921(T).....	Aus 367, 819, 820, AX 0367E, 0820E
922(T).....	Aus 247
923(T).....	Aus 249, 250, AX 0249E
924(T).....	Aus 249, 250, 823, AX 0249E, 0823E
925(T).....	Aus 249, 823, AX 0249E, 0823E
926(T).....	Aus 826, 827
927(T).....	Aus 256, 257
928(T).....	Aus 256, 257
929(T).....	Aus 256, 257
930(T).....	Aus 257
931(T).....	Aus 256, 257
932(T).....	Aus 256, 257
933(T).....	Aus 256
934(T).....	Aus 256, 827
935(T).....	Aus 258
936(T).....	Aus 262, 263, 264, 830, AX 63262
937(T).....	Aus 6
938(T).....	Aus 24, 26, 28, AX 72026
939(T).....	Aus 24, 26, 28, AX 72026
940(T).....	Aus 314, AX 0314F
941(T).....	Aus 327, 741
942(T).....	Aus 327
943(T).....	Aus 327
944(T).....	Aus 117, AX 70117
945(T).....	Aus 171, 173, 174, 796
946(T).....	Aus 172
947(T).....	Aus 796, 797
948(T).....	Aus 143, 155

NUMERICAL INDEX OF CHARTS AFFECTED

Edition No 18

Aus Chart	Notices	Aus Chart	Notices
Aus 6.....	937(T)	Aus 744	902
Aus 24.....	938(T), 939(T)	Aus 745	902
Aus 26.....	938(T), 939(T)	Aus 746	902
Aus 28.....	938(T), 939(T)	Aus 754	903
Aus 50.....	899	Aus 796	945(T), 947(T)
Aus 59.....	885	Aus 797	947(T)
Aus 60.....	885	Aus 808	886
Aus 110.....	905	Aus 809	887, 888
Aus 112.....	903	Aus 814	889, 909(T), 911(T)
Aus 114.....	904	Aus 815	889, 911(T), 918(T)
Aus 117.....	903, 904, 944(T)	Aus 819	920(T), 921(T)
Aus 143.....	948(T)	Aus 820	921(T)
Aus 155.....	948(T)	Aus 823	924(T), 925(T)
Aus 158.....	907	Aus 826	926(T)
Aus 171.....	945(T)	Aus 827	926(T), 934(T)
Aus 172.....	906, 946(T)	Aus 828	891
Aus 173.....	945(T)	Aus 830	892, 936(T)
Aus 174.....	945(T)	Aus 832	893
Aus 197.....	888	Aus 834	894
Aus 198.....	908(T)	Aus 835	894
Aus 199.....	908(T)	Aus 836	894
Aus 204.....	888	Aus 920	898
Aus 230.....	909(T), 910(T)	Aus 4603	900
Aus 235.....	889, 911(T), 916(T), 917(T), 918(T)	Aus 4620	891
Aus 236.....	889, 911(T), 912(T), 913(T), 914(T), 915(T), 916(T)	Aus 4643	887
Aus 237.....	911(T), 914(T)	Aus 4708	900
Aus 238.....	911(T)	Aus 4722	900
Aus 242.....	919(P)	Aus 4723	900
Aus 244.....	920(T)	AX 0110E	905
Aus 245.....	920(T)	AX 0249E	923(T), 924(T), 925(T)
Aus 247.....	922(T)	AX 0312F.....	897
Aus 249.....	923(T), 924(T), 925(T)	AX 0314F.....	940(T)
Aus 250.....	923(T), 924(T)	AX 0367E	921(T)
Aus 254.....	890	AX 0754E	903
Aus 256.....	927(T), 928(T), 929(T), 931(T), 932(T), 933(T), 934(T)	AX 0808E	886
Aus 257.....	927(T), 928(T), 929(T), 930(T), 931(T), 932(T)	AX 0809E	887, 888
Aus 258.....	935(T)	AX 0820E	921(T)
Aus 262.....	892, 936(T)	AX 0823E	924(T), 925(T)
Aus 263.....	936(T)	AX 4603F.....	900
Aus 264.....	936(T)	AX 4620F.....	891
Aus 286.....	885	AX 4708F.....	900
Aus 289.....	885	AX 4722F.....	900
Aus 296.....	885, 896	AX 4723F.....	900
Aus 297.....	885	AX 6027S	892
Aus 312.....	897	AX 60377	885
Aus 314.....	940(T)	AX 63112	903
Aus 327.....	900, 901, 941(T), 942(T), 943(T)	AX 63262	892, 936(T)
Aus 366.....	921(T)	AX 66002	903
Aus 367.....	921(T)	AX 66003	885
Aus 397.....	895	AX 70117	903, 904, 944(T)
Aus 489.....	887, 888	AX 72026	938(T), 939(T)
Aus 700.....	896		
Aus 741.....	900, 941(T)		
Aus 742.....	901		
Aus 743.....	901		
		INT Chart	Notices
		INT 603	900
		INT 620	891
		INT 643	887
		INT 708	900
		INT 722	900
		INT 723	900

885 AUSTRALIA - Products

Australian Hydrographic Service (AA553159, AA553438, AA553564)

New Chart

<i>Chart</i>	<i>Published</i>	<i>Title and description of amendments</i>	<i>Scale</i>	<i>Index Chart</i>	<i>Price</i>
Aus 59	9/9/2011	Australia - North West Coast - Western Australia - Port of Dampier (Northern Sheet) 20° 32'.46 S - 20° 38'.52 S 116° 42'.55 E - 116° 46'.30 E <i>New chart providing improved coverage of the Dampier port facilities between Withnell Bay and Parker Point.</i>	1:10 000	Aus 5001	\$35.00
Aus 60	9/9/2011	Australia - Northwest Coast - Western Australia - Port of Dampier (Southern Sheet) 20° 36'.60 S - 20° 40'.15 S 116° 38'.15 E - 116° 44'.10 E Inset: Kaiser Marina 20° 39'.9 S - 20° 40'.5 S 116° 41'.3 E - 116° 42'.1 E <i>New chart providing improved coverage of the Dampier port facilities between Parker Point and Intercourse Islands.</i>	1:10 000 1:10 000	Aus 5001	\$35.00

Miscellaneous Charts Republished

Chart
AX 60377
AX 66003

New Chart to be published shortly

<i>Chart</i>	<i>Title</i>	<i>Scale</i>	<i>Expected Publication Date</i>
Aus 286	Australian - East Coast - Coral Sea - Ashmore Reef	1:50 000	23 September 2011
Aus 297	Torres Strait - Great North East Channel - Basilisk Passage to Moon Passage	1:50 000	7 October 2011

Chart permanently withdrawn

Chart *On publication of new chart*
Aus 59 Aus 59 and Aus 60

Chart to be permanently withdrawn without replacement

Chart *On publication of new chart*
Aus 289 Aus 296

Admiralty publication

<i>NP No</i>	<i>Title</i>	<i>Date</i>	<i>Remarks</i>
NP39	South Indian Ocean Pilot (Thirteenth Edition 2011).	8/9/2011	The twelfth edition of NP39 (2008) is cancelled.

Note: Edition 17, dated 26 August 2011, notice to mariners 858/2011 incorrectly refers to Aus 753 as NC 28/7/2011, this should read 14/8/2009.

For further details refer to the AHS website at www.hydro.gov.au for new edition and new chart stock arrival information.

When placing orders with a chart agent, mariners should advise whether their order pertains to the current edition or the new edition.

886* AUSTRALIA - NEW SOUTH WALES - Crookhaven Heads - Navline

UKHO (AA552164)

Aus 808 [675/2011]

Insert accompanying block 34° 50'.0 S 150° 46'.0 E

AX 0808E [675/2011]

Insert accompanying block 34° 50'.0 S 150° 46'.0 E

9 September 2011

887* AUSTRALIA - NEW SOUTH WALES - Port Jackson - Historic wreck eastwards

Department of Planning and Community Development (AA543700)

Aus 489 [540/2011]

Insert	depth, 382m, enclosed by danger circle with magenta legend, <i>Historic Wk (see Note)</i>	33° 51'.90 S	151° 44'.42 E
--------	---	--------------	---------------

Aus 809 [729/2011]

Insert	depth, 382m, enclosed by danger circle with magenta legend, <i>Historic Wk (see Note)</i>	33° 51'.90 S	151° 44'.42 E
--------	---	--------------	---------------

Aus 4643 (INT 643) [788/2011]

Insert	depth, 382m, enclosed by danger circle with magenta legend, <i>Historic Wk</i>	33° 51'.9 S	151° 44'.4 E
--------	--	-------------	--------------

AX 0809E [729/2011]

Insert	depth, 382m, enclosed by danger circle with magenta legend, <i>Historic Wk (see Note)</i>	33° 51'.90 S	151° 44'.42 E
--------	---	--------------	---------------

888* AUSTRALIA - NEW SOUTH WALES - Barrenjoey Head - Wreck eastwards

S Willan, Australian Hydrographic Service (AA549937 - AA549943)

Aus 197 [675/2011]

Substitute	danger circle with legend, <i>Wk</i> for enclosing contour and legend, R	33° 35'.8 S	151° 25'.1 E
------------	--	-------------	--------------

Aus 204 [787/2011]

Substitute	danger circle with legend, <i>Wk</i> for enclosing contour and legend, R	33° 35'.8 S	151° 25'.1 E
------------	--	-------------	--------------

Aus 489 [887/2011]

Insert	depth, 45m, enclosed by danger circle with legend, <i>Wk</i>	33° 35'.79 S	151° 25'.09 E
--------	--	--------------	---------------

Delete	#	33° 35'.6 S	151° 23'.6 E
--------	---	-------------	--------------

Aus 809 [887/2011]

Insert	danger circle to enclose depth, 45m, with legend, <i>Wk</i>	33° 35'.8 S	151° 25'.1 E
--------	---	-------------	--------------

AX 0809E [887/2011]

Insert	danger circle to enclose depth, 45m, with legend, <i>Wk</i>	33° 35'.8 S	151° 25'.1 E
--------	---	-------------	--------------

889* AUSTRALIA - QUEENSLAND - Flinders Reef - Wreck

T Jackson (AA549246)

Aus 235 [734/2011]

Insert	depth, 12m, enclosed by danger circle with legend, <i>Wk</i>	26° 58'.83 S	153° 28'.87 E
--------	--	--------------	---------------

Aus 236 [843/2011]

Insert	depth, 12m, enclosed by danger circle with legend, <i>Wk</i>	26° 58'.83 S	153° 28'.87 E
--------	--	--------------	---------------

Aus 814 [730/2011]

Insert	depth, 12m, enclosed by danger circle with legend, <i>Wk</i>	26° 58'.83 S	153° 28'.87 E
--------	--	--------------	---------------

Aus 815 [630/2011]

Insert	depth, 12m, enclosed by danger circle with legend, <i>Wk</i>	26° 58'.83 S	153° 28'.87 E
--------	--	--------------	---------------

890* AUSTRALIA - QUEENSLAND - Hayman Island - Blue Pearl Bay - Buoy

Australian Hydrographic Service (AA552803)

Aus 254 (plan, Stonehaven Anchorage) [789/2011]

Insert	white conical buoy, without topmark	20° 02'.846 S	148° 52'.695 E
--------	-------------------------------------	---------------	----------------

891* AUSTRALIA - QUEENSLAND - Thread Shoal to Myrmidon Reef - Scientific instruments*Former Notice - 116(T)/2008 is cancelled*

Australian Institute of Marine Science (AA546309)

Aus 828 [632/2011]

Insert	displaced depth, 10m, enclosed by danger circle with legend, ODAS	18° 18'.62 S	147° 09'.80 E
	displaced depth, 10m, enclosed by danger circle with legend, ODAS	18° 13'.18 S	147° 20'.62 E
Delete	depth, 38m	18° 18'.7 S	147° 09'.7 E

Aus 4620 (INT 620) [846/2011]

Insert	depth, 10m, enclosed by danger circle with legend, ODAS	18° 13'.2 S	147° 20'.6 E
--------	---	-------------	--------------

AX 4620F [846/2011]

Insert	depth, 10m, enclosed by danger circle with legend, ODAS	18° 13'.2 S	147° 20'.6 E
--------	---	-------------	--------------

892* AUSTRALIA - QUEENSLAND - Cairns - Pilot boarding place

Maritime Safety Queensland Notice 786/2011 (AA552124)

Aus 262 [632/2011]

Move	pilot boarding place	16° 47'.0 S	145° 53'.0 E
	to	16° 47'.5 S	145° 53'.5 E

Aus 830 [632/2011]

Move	pilot boarding place	16° 47'.0 S	145° 53'.0 E
	to	16° 47'.5 S	145° 53'.5 E

AX 6027S [453/2011]

Move	pilot boarding place	16° 47'.0 S	145° 53'.0 E
	to	16° 47'.5 S	145° 53'.5 E

AX 63262 [632/2011]

Move	pilot boarding place	16° 47'.0 S	145° 53'.0 E
	to	16° 47'.5 S	145° 53'.5 E

893* AUSTRALIA - QUEENSLAND - Ribbon Reef to Jewell Reef - Scientific instruments*Former Notice - 118(T)/2008 is cancelled*

Australian Institute of Marine Science (AA546309, AA547582)

Aus 832 [679/2011]

Insert	depth, 10m, enclosed by danger circle with legend, ODAS	14° 42'.11 S	145° 38'.49 E
	depth, 250m, enclosed by danger circle with legend, ODAS	14° 20'.37 S	145° 20'.62 E
Delete	depth, 198m	14° 42'.3 S	145° 38'.4 E

894* AUSTRALIA - QUEENSLAND - Eel Reef - Depths
UKHO (AA553054)

Aus 834 [848/2011]

Insert	depth, 3 ₂ m	12° 32'.40 S	143° 35'.24 E
	contour W to semi-enclose depth, 0 ₃ m	12° 32'.4 S	143° 35'.6 E

Aus 835 [791/2011]

Insert	accompanying block	12° 30'.0 S	143° 32'.5 E
--------	--------------------	-------------	--------------

Aus 836 [87/2011]

Insert	depth, 3 ₂ m	12° 32'.40 S	143° 35'.24 E
	contour W to semi-enclose depth, 0 ₃ m	12° 32'.4 S	143° 35'.6 E

895* PAPUA NEW GUINEA - Bougainville Island - Depths westwards
Geoscience Australia (DHDB 1694140)

Aus 397 [295/2011]

Insert	accompanying block	6° 00'.0 S	154° 00'.0 E
--------	--------------------	------------	--------------

896* AUSTRALIA - TORRES STRAIT - Larpent Bank - Depth
HMAS *Benalla* (AA552923, AA552924)

Aus 296 [795/2011]

Insert	depth, 9 ₂ m, enclosed by contour	10° 34'.68 S	142° 05'.04 E
--------	--	--------------	---------------

Aus 700 [632/2011]

Insert	depth, 9 ₂ m, enclosed by contour	10° 34'.59 S	142° 05'.10 E
--------	--	--------------	---------------

897* AUSTRALIA - TIMOR SEA - Sahul Banks - Racon; AIS
Eni Australia (AA552867 - AA552870, AA553631)

Aus 312 [850/2011]

Insert	magenta legend, <i>Racon (B) AIS</i>	10° 38'.3 S	126° 08'.5 E
--------	--------------------------------------	-------------	--------------

AX 0312F [850/2011]

Insert	magenta legend, <i>Racon (B) AIS</i>	10° 38'.3 S	126° 08'.5 E
--------	--------------------------------------	-------------	--------------

898* INDIAN OCEAN - Christmas Island - Smith Point - Mooring buoys
HMAS *Melville* (AA550994, AA550995)

Aus 920 (plan, Flying Fish Cove) [839/2010]

Insert	yellow cylindrical mooring buoy	10° 25'.979 S	105° 39'.703 E
--------	---------------------------------	---------------	----------------

Move	mooring buoy	10° 26'.05 S	105° 39'.64 E
	to	10° 26'.064 S	105° 39'.676 E
	mooring buoy	10° 25'.90 S	105° 39'.69 E
	to	10° 25'.830 S	105° 39'.669 E
	mooring buoy	10° 25'.89 S	105° 39'.62 E
	to	10° 25'.951 S	105° 39'.490 E

Delete	depth, 2 ₉ m	10° 25'.97 S	105° 39'.71 E
--------	-------------------------	--------------	---------------

899* AUSTRALIA - WESTERN AUSTRALIA - Broome - Depth

Department of Transport WA (DHDB 1884773)

Aus 50 [256/2010]

Insert	depth, 3 ₄ m, enclosed by contour	17° 57'.458 S	122° 10'.775 E
Delete	depth, 13 ₁ m	17° 57'.45 S	122° 10'.80 E

900* AUSTRALIA - WESTERN AUSTRALIA - Glomar Shoal - Oil field decommissioned*Former Notice - 488(T)/2011 is cancelled*

Apache Energy Ltd (AA550140)

Aus 327 [855/2011]

Insert	accompanying block	19° 38'.0 S	116° 50'.0 E
--------	--------------------	-------------	--------------

Aus 741 [855/2011]

Insert	accompanying block	19° 41'.0 S	116° 43'.0 E
--------	--------------------	-------------	--------------

Aus 4603 (INT 603) [801/2011]

Delete	lit platform	19° 42'.0 S	116° 43'.0 E
--------	--------------	-------------	--------------

Aus 4708 (INT 708) [853/2011]

Delete	lit platform	19° 42'.0 S	116° 43'.0 E
--------	--------------	-------------	--------------

Aus 4722 (INT 722) [798/2011]

Delete	lit platform and enclosing restricted area with legend, Legendre	19° 42'.0 S	116° 43'.0 E
--------	--	-------------	--------------

Aus 4723 (INT 723) [857/2011]

Amend	legend to <i>Wanaea</i>	19° 36'.0 S	116° 37'.0 E
-------	-------------------------	-------------	--------------

Delete	lit platform with legend, Legendre	19° 42'.0 S	116° 43'.0 E
--------	------------------------------------	-------------	--------------

AX 4603F [801/2011]

Delete	lit platform	19° 42'.0 S	116° 43'.0 E
--------	--------------	-------------	--------------

AX 4708F [853/2011]

Delete	lit platform	19° 42'.0 S	116° 43'.0 E
--------	--------------	-------------	--------------

AX 4722F [798/2011]

Delete	lit platform and enclosing restricted area with legend, Legendre	19° 42'.0 S	116° 43'.0 E
--------	--	-------------	--------------

AX 4723F [857/2011]

Amend	legend to <i>Wanaea</i>	19° 36'.0 S	116° 37'.0 E
-------	-------------------------	-------------	--------------

Delete	lit platform with legend, Legendre	19° 42'.0 S	116° 43'.0 E
--------	------------------------------------	-------------	--------------

901* AUSTRALIA - WESTERN AUSTRALIA - Cape Preston - Port limit
 Department of Transport WA (AA550383, AA550384)

Aus 327 [900/2011]

Insert dashed magenta line with legend *Cape Preston Port Limit*, between

20° 52'.00 S	116° 11'.88 E
20° 52'.00 S	116° 08'.50 E
20° 43'.00 S	116° 05'.00 E
20° 35'.78 S	116° 05'.00 E
20° 35'.78 S	116° 15'.00 E
20° 45'.00 S	116° 15'.00 E
20° 45'.00 S	116° 14'.00 E
20° 48'.92 S	116° 14'.00 E
20° 48'.92 S	116° 16'.08 E
20° 52'.07 S	116° 16'.08 E

Aus 742 [596/2011]

Insert dashed magenta line with legend *Cape Preston Port Limit*, between

20° 52'.00 S	116° 11'.88 E
20° 52'.00 S	116° 08'.50 E
20° 43'.00 S	116° 05'.00 E
20° 35'.78 S	116° 05'.00 E
20° 35'.78 S	116° 15'.00 E
20° 45'.00 S	116° 15'.00 E
20° 45'.00 S	116° 14'.00 E
20° 48'.92 S	116° 14'.00 E
20° 48'.92 S	116° 16'.08 E
20° 52'.07 S	116° 16'.08 E

Aus 743 [856/2011]

Insert accompanying block

20° 50'.0 S	116° 10'.0 E
-------------	--------------

902* AUSTRALIA - WESTERN AUSTRALIA - Point Murat to Point Maud - Chart limits

Australian Hydrographic Service (AA550617)

Aus 744 [744/2011]

Insert	magenta limits, with legend <i>Aus 72</i> in NE corner, between	21° 50'.52 S	114° 10'.33 E
		21° 50'.52 S	114° 12'.50 E
		21° 47'.80 S	114° 12'.50 E
		21° 47'.80 S	114° 10'.33 E
		21° 50'.52 S	114° 10'.33 E
	magenta limits, with legend <i>Aus 72</i> in NW corner, between	21° 57'.91 S	114° 07'.80 E
		21° 57'.91 S	114° 09'.53 E
		21° 56'.77 S	114° 09'.53 E
		21° 56'.77 S	114° 07'.80 E
		21° 57'.91 S	114° 07'.80 E
Delete	plan, POINT MURAT WHARF	22° 08'.0 S	114° 52'.0 E
	plan, EXMOUTH BOAT HARBOUR	22° 25'.0 S	114° 52'.0 E
	magenta limits, with legend see Plan, centred on	21° 49'.0 S	114° 11'.5 E
	magenta limits, with legend see Plan, centred on	21° 57'.5 S	114° 08'.5 E

Aus 745 [744/2011]

Insert	magenta limits, with legend <i>Aus 72</i> in SW corner, between	22° 49'.00 S	113° 35'.40 E
		22° 49'.00 S	113° 46'.60 E
		22° 32'.00 S	113° 46'.60 E
		22° 32'.00 S	113° 35'.40 E
		22° 49'.00 S	113° 35'.40 E
	magenta limits, with legend <i>Aus 72</i> in NW corner, between	23° 08'.40 S	113° 50'.00 E
		22° 58'.25 S	113° 50'.00 E
		22° 58'.25 S	113° 43'.00 E
		23° 08'.40 S	113° 43'.00 E
	magenta limits, with legend <i>Aus 72</i> in SW corner, between	21° 50'.52 S	114° 10'.33 E
		21° 50'.52 S	114° 12'.50 E
		21° 47'.80 S	114° 12'.50 E
		21° 47'.80 S	114° 10'.33 E
		21° 50'.52 S	114° 10'.33 E
	magenta limits, with legend <i>Aus 72</i> in SW corner, between	21° 57'.91 S	114° 07'.80 E
		21° 57'.91 S	114° 09'.53 E
		21° 56'.77 S	114° 09'.53 E
		21° 56'.77 S	114° 07'.80 E
		21° 57'.91 S	114° 07'.80 E
Delete	magenta limits, with legend see Aus 744, centred on	21° 49'.0 S	114° 11'.5 E
	magenta limits, with legend see Aus 744, centred on	21° 57'.5 S	114° 08'.5 E
	magenta limits, with legend Aus 72, centred on	22° 37'.0 S	113° 39'.0 E
	magenta limits, with legend Aus 72, centred on	22° 44'.0 S	113° 41'.0 E
	magenta limits, with legend Aus 72, centred on	23° 03'.0 S	113° 47'.0 E

Aus 746 [744/2011]

Insert	magenta limits, with legend <i>Aus 72</i> in SW corner, between	23° 04'.60 S	113° 43'.00 E
		23° 11'.00 S	113° 43'.00 E
		23° 11'.00 S	113° 50'.00 E
Delete	magenta limits, with legend Aus 72, centred on	23° 06'.0 S	113° 46'.0 E

903* AUSTRALIA - WESTERN AUSTRALIA - Fremantle - Beagle Rocks - Light beacon; bearing
Australian Hydrographic Service (AA332244), The Chart and Map Shop (AA552340)

Aus 112 [803/2011]			
Amend	light beacon to Q(2)6s	32° 03'.62 S	115° 43'.60 E
Aus 117 [805/2011]			
Amend	light beacon to Q(2)6s	32° 03'.62 S	115° 43'.60 E
	bearing to 082.7°	32° 03'.46 S	115° 42'.10 E
Aus 754 [858/2011]			
Delete	light beacon	32° 03'.6 S	115° 43'.6 E
AX 0754E [858/2011]			
Delete	light beacon	32° 03'.6 S	115° 43'.6 E
AX 63112 [803/2011]			
Amend	light beacon to Q(2)6s	32° 03'.62 S	115° 43'.60 E
AX 66002 [687/2011]			
Delete	light beacon	32° 03'.6 S	115° 43'.6 E
AX 70117 [805/2011]			
Amend	light beacon to Q(2)6s	32° 03'.62 S	115° 43'.60 E
	bearing to 082.7°	32° 03'.46 S	115° 42'.10 E

904* AUSTRALIA - WESTERN AUSTRALIA - Cockburn Sound - Light buoys withdrawn
Fremantle Ports Notice 16/2011 (AA551111)

Aus 114 [805/2011]			
Delete	light buoy	32° 10'.20 S	115° 43'.72 E
Aus 117 [903/2011]			
Delete	light buoy	32° 09'.50 S	115° 41'.84 E
	light buoy	32° 10'.20 S	115° 43'.72 E
AX 70117 [903/2011]			
Delete	light buoy	32° 10'.20 S	115° 43'.72 E
	light buoy	32° 09'.50 S	115° 41'.84 E

905* AUSTRALIA - WESTERN AUSTRALIA - Oyster Harbour - Bayonet Head - Marine farm
Australian Hydrographic Service (AA553310)

Aus 110 (inset, Oyster Harbour) [NE 12/8/2011]			
Delete	marine farm	34° 58'.9 S	117° 56'.8 E
AX 0110E (inset, Oyster Harbour) [689/2011]			
Delete	marine farm	34° 58'.9 S	117° 56'.8 E

906* AUSTRALIA - TASMANIA - River Derwent - Raft removed
Former Notice - 331(T)/2011 is cancelled
Marine and Safety Tasmania (AA552475)

Aus 172 [957/2010]			
Delete	raft	42° 51'.07 S	147° 20'.19 E

907* AUSTRALIA - VICTORIA - Port Phillip - Coles Channel - Light beacon established
Victorian Notice 98/2011 (AA552046)

Aus 158 [NC 12/8/2011]

Substitute starboard lateral light beacon, *F(2)G.6s No1*, with
topmark for beacon

38° 13'.78 S

144° 42'.49 E

908(T)/2011 AUSTRALIA - NEW SOUTH WALES - Botany Bay - Kurnell to La Perouse Point - Cable laying operations*Date - Until 31 December 2011*

Sydney Ports Corporation Notice 10/2011 (AA554332)

The barge *AP Recovery*, MT *Targa* and support vessels are laying power cables between Kurnell (34° 00'.39 S 151° 12'.93 E) and La Perouse Point (33° 59'.37 S 151° 13'.84 E).

The barge has deployed anchors marked by special light buoys. All vessels involved in the works are fitted with AIS and will display appropriate shapes.

An exclusion zone exists around the barge, which will be maintained by support vessels.

Channel closure will be promulgated through SHIPS and advised by Harbour Control on VHF Ch 13.

Mariners are advised to navigate with caution in the area.

Chart temporarily affected - Aus 198 - Aus 199

909(T)/2011 AUSTRALIA - QUEENSLAND - Gold Coast Seaway - Dredging operations*Former Notice - 461(T)/2011 is cancelled**Date - Until 31 October 2011*

Maritime Safety Queensland Notice 807(T)/2011 (AA552471)

The dredge *Port Frederick* is conducting dredging operations at the entrance to the Gold Coast Seaway (27° 56'.0 S 153° 26'.0 E).

The dredge will be operating between the entrance and Surfers Paradise beach (28° 00'.0 S 153° 26'.0 E) during the operations.

The dredge will monitor VHF Ch 16 and Ch 67.

Mariners are advised to navigate with caution in the area.

Chart temporarily affected - Aus 230 - Aus 814

910(T)/2011 AUSTRALIA - QUEENSLAND - Gold Coast Seaway - Shoaling*Former Notice - 810(T)/2011 is cancelled*

Maritime Safety Queensland Notice 806(T)/2011 (AA552472)

Available depths as at 26 August 2011:

	<i>Metres</i>
Centre line leads (255°)	3.8
Southern approach leads (291°)	2.9

A shoal area, with a least depth of 2.9m, is drifting northwards immediately east of the southern break wall towards the centreline leads.

Mariners are advised against using the southern approach leads (291°) when transiting the seaway and to keep the centre line leads (255°) open to the north to avoid the shoal area and breaking waves to the south. Deeper water to 5.4m is found to the north of the centre line leads.

Chart temporarily affected - Aus 230

911(T)/2011 AUSTRALIA - QUEENSLAND - Moreton Bay - Brisbane River - Depth information

Former Notice - 869(T)/2011 is cancelled

Brisbane Port Corporation (AA555065)

Available depths and under keel clearances (UKC) at 8 September 2011:

<i>Berth</i>	<i>Metres</i>	<i>Remarks</i>
* Fisherman Islands No10	14.0	
* Fisherman Islands No9	14.0	
Fisherman Islands No8	14.0	
Fisherman Islands No7	14.1	
Fisherman Islands No6	13.4	
Fisherman Islands No5	14.0	
Fisherman Islands No4	14.1	
Fisherman Islands No3	14.0	
Fisherman Islands No2	14.0	
Fisherman Islands No1	14.0	
Fisherman Islands Grain and Woodchip	13.0	
* Caltex Fisherman Islands	14.7	
* Fisherman Islands Coal	14.2	
Fisherman Islands General Purpose	11.6	
BP Luggage Point	14.3	
Caltex Products	9.8	
* Cement Australia Co Wharf	9.8	
* BP Products	10.7	
* Shell	10.7	
Pacific Terminals	11.0	
Incitec North	10.0	
* Incitec South	10.3	
Pinkenba 1	10.4	
Pinkenba 2	10.4	
Riverside Marina	-	
Sugar Terminal	9.8	
Cairncross Fitting Out Wharf	8.2	
* Cairncross Breasting Wharf	6.5	
Brisbane Naval Wharf	-	
Maritime No3	5.6	(not maintained)
Maritime No2	7.8	
Maritime No1	9.0	
Hamilton No4	10.4	
* Hamilton No1	8.8	
Brisbane Cruise Ship Terminal	9.4	
	Metres	UKC/Remarks
<i>Moreton Bay :</i>		
North East Channel	5.5	1.5
* North West Channel	15.0	2.3 (280m width)
North West Bypass Channel	9.2	1.6
Spitfire Channel	15.0	1.5 (600m width)
East Knoll Bypass Channel	6.9	1.4
East Channel	15.0	1.5 (300m width from western side)
Main Channel (M8 - M9)	10.0	1.8
Entrance Channel (E5 - EBCN)	14.7	1.5
<i>Brisbane River :</i>		
Entrance Beacons and Bar Cutting	14.0	1.46
Fisherman Islands Swing Basin	14.0	1.3
Pelican Banks Reach to Hamilton Reach	9.0	0.6 / 0.9 (draft/tide)
Cement Australia Swing Basin	9.0	0.6 / 0.9 (draft/tide)
Pinkenba Swing Basin	9.0	0.6 / 0.9 (draft/tide)
Hamilton Swing Basin	8.8	0.6 / 0.9 (draft/tide)
* Indicates new or revised entry.		

Chart temporarily affected - Aus 235 - Aus 236 - Aus 237 - Aus 238 - Aus 814 - Aus 815

912(T)/2011 AUSTRALIA - QUEENSLAND - Moreton Bay - Russell Island - Harbour works completed*Former Notice - 313(T)/2011 is cancelled*

Maritime Safety Queensland Notice 847/2011 (AA554773)

Cancel this notice on receipt.

Chart formerly affected - Aus 236**913(T)/2011 AUSTRALIA - QUEENSLAND - Moreton Bay - Mud Island - Wreck salvaged***Former Notice - 262(T)/2011 is cancelled*

Maritime Safety Queensland Notice 847/2011 (AA554773)

Cancel this notice on receipt.

Chart formerly affected - Aus 236**914(T)/2011 AUSTRALIA - QUEENSLAND - Brisbane River - Mooring buoys recovered***Former Notice - 55(T)/2011 is cancelled*

Maritime Safety Queensland Notice 847/2011 (AA554773)

Cancel this notice on receipt.

Chart formerly affected - Aus 236 - Aus 237**915(T)/2011 AUSTRALIA - QUEENSLAND - Moreton Bay - Deception Bay - Obstruction removed***Former Notice - 712(T)/2010 is cancelled*

Maritime Safety Queensland Notice 847/2011 (AA554773)

Cancel this notice on receipt.

Chart formerly affected - Aus 236**916(T)/2011 AUSTRALIA - QUEENSLAND - Pumicestone Channel - Elimbah Creek - Beacon destroyed**

Maritime Safety Queensland Notice 811(T)/2011 (AA553624)

The special beacon (27° 01'.20 S 153° 05'.55 E) has been destroyed; a special light buoy, *Fl.Y.3s*, exists in situ.**Chart temporarily affected - Aus 235 - Aus 236****917(T)/2011 AUSTRALIA - QUEENSLAND - Mooloolaba - Shoaling***Former Notice - 650(T)/2011 is cancelled*

Maritime Safety Queensland Notice 825(T)/2011 (AA553378)

Shoaling with a least depth of *1m* exists within the main entrance channel to Mooloolah River (26° 40'.75 S 153° 07'.91 E).The leading lights (26° 40'.97 S 153° 08'.17 E and 26° 40'.93 S 153° 08'.14 E) are temporarily unlit. A port lateral light buoy, *Q.R.*, exists in position 26° 40'.76 S 153° 07'.88 E and marks the southwestern tip of the shoal.

Mariners are advised to navigate with caution in the area.

Chart temporarily affected - Aus 235

918(T)/2011 AUSTRALIA - QUEENSLAND - Gneering Shoals - Obstruction

Former Notice - 870(T)/2011 is cancelled

Maritime Safety Queensland Notices 783(T)/2011; 828/2011 (AA551902, AA553382)

A lost anchor and cable exists in position 26° 39'.56 S 153° 16'.53 E.

Mariners are advised to navigate with caution in the area.

Chart temporarily affected - Aus 235 - Aus 815**919(P)/2011 AUSTRALIA - QUEENSLAND - Burnett River - Nav aids; shoaling**

Former Notice - 520(P)/2011 is cancelled

Maritime Safety Queensland Notice 208(T)/2011, 435(T)/2011 (AA520626, AA533810, AA554621, AA554622, AA554633)

Port lateral light buoys, *Fl.R.4s*, exist in situ for light beacons as follows:

<i>No</i>	<i>Position</i>
16	24° 45'.36 S 152° 23'.77 E
18	24° 45'.53 S 152° 23'.28 E
20	24° 45'.76 S 152° 23'.00 E
22	24° 45'.84 S 152° 22'.94 E.

Starboard lateral light buoys, *Fl.G.4*, exist in situ for light beacons as follows:

<i>No</i>	<i>Position</i>
19	24° 45'.61 S 152° 23'.05 E
23	24° 45'.82 S 152° 22'.83 E.

No27, 29 and 31 special light buoys have been temporarily withdrawn. Special light buoys, *Fl.Y.2-5s*, exist in the following positions:

24° 46'.36 S 152° 22'.85 E
24° 46'.25 S 152° 22'.81 E
24° 46'.15 S 152° 22'.77 E
24° 46'.12 S 152° 22'.73 E
24° 46'.04 S 152° 22'.74 E
24° 45'.97 S 152° 22'.76 E.

The starboard lateral light beacon No37, (24° 47'.88 S 152° 22'.28 E), has been altered to a port lateral light beacon, *Fl.R.2.5s*.

The starboard lateral light beacon No41, (24° 49'.32 S 152° 22'.22 E), has been altered to a port lateral light beacon, *Fl.R.6s*.

Buoy No32 (24° 49'.40 S 152° 22'.20 E) has been withdrawn.

Two starboard lateral light buoys have been established in the following positions

<i>Position</i>	<i>Light characteristic</i>
24° 49'.22 S 152° 22'.18 E	<i>Fl.G.3s</i>
24° 48'.78 S 152° 21'.70 E	<i>Fl.G.5s</i> .

All other buoys and beacons now have relevant day marks and lights affixed, nav aids will be renumbered shortly.

Shoaling with a least depth of 0.5m exists in the vicinity of light beacon No41 (24° 49'.32 S 152° 22'.21 E).

Shoaling, with a least depth of 0.2m, exists in the vicinity of 24° 46'.55 S 152° 22'.90 E.

Note: a new edition of Aus 242 is in production.

Chart which will be affected - Aus 242

920(T)/2011 AUSTRALIA - QUEENSLAND - Gladstone - Barney Point to Grahams Creek - Dredging operations*Former Notice - 523(T)/2011 is cancelled*

Maritime Safety Queensland Notice 846(T)/2011 (AA554339)

Dredges and support vessels are conducting dredging operations between Barney Point (23° 50'.0 S 151° 16'.5 E) and Grahams Creek (23° 44'.5 S 151° 10'.0 E).

A 50m exclusion zone exists around all dredges associated with the operations.

All vessels will display appropriate lights and shapes and will monitor VHF Ch 13 and Ch 16.

Mariners are advised to navigate with caution in the area.

Chart temporarily affected - Aus 244 - Aus 245 - Aus 819

921(T)/2011 AUSTRALIA - QUEENSLAND - Great Keppel Island - Light beacon restored*Former Notice - 174(T)/2010 is cancelled*

Maritime Safety Queensland Notice 847/2011 (AA554773)

Cancel this notice on receipt.

Chart formerly affected - Aus 367 - Aus 819 - Aus 820 - AX 0367E - AX 0820E

922(T)/2011 AUSTRALIA - QUEENSLAND - Rosslyn Bay - Harbour works completed*Former Notice - 420(T)/2011 is cancelled*

Maritime Safety Queensland Notice 847/2011 (AA554773)

Cancel this notice on receipt.

Chart formerly affected - Aus 247

923(T)/2011 AUSTRALIA - QUEENSLAND - Hay Point - Harbour works completed*Former Notice - 705(T)/2011 is cancelled*

Maritime Safety Queensland (AA554975)

Cancel this notice on receipt.

Chart formerly affected - Aus 249 - Aus 250 - AX 0249E

924(T)/2011 AUSTRALIA - QUEENSLAND - Dudgeon Point - Scientific instruments*Date - Until 29 February 2012*

Maritime Safety Queensland Notice 799(T)/2011 (AA552293)

Scientific instruments marked by special light buoys, Q.Y, exist in positions:

21° 14'.35 S 149° 16'.01 E

21° 14'.15 S 149° 17'.53 E

21° 11'.39 S 149° 15'.23 E.

Chart temporarily affected - Aus 249 - Aus 250 - Aus 823 - AX 0249E – AX 0823E

925(T)/2011 AUSTRALIA - QUEENSLAND - Coral Point - Light beacon restored*Former Notice - 175(T)/2010 is cancelled*

Maritime Safety Queensland Notice 847/2011 (AA554773)

Cancel this notice on receipt.

Chart formerly affected - Aus 249 - Aus 823 - AX 0249E - AX 0823E

926(T)/2011 AUSTRALIA - QUEENSLAND - Cape Bowling Green - Scientific instrument*Former Notice* - 114(T)/2008 is cancelled*Date* - Until 30 June 2013

Australian Institute of Marine Science (AA546309)

A subsurface scientific instrument, depth 10m, exists in position 19° 18'.37 S 147° 37'.20 E.

Chart temporarily affected - Aus 826 - Aus 827**927(T)/2011 AUSTRALIA - QUEENSLAND - Cleveland Bay - Scientific instrument recovered***Former Notice* - 526(T)/2011 is cancelled

Maritime Safety Queensland (AA552900)

Cancel this notice on receipt.

Chart formerly affected - Aus 256 - Aus 257**928(T)/2011 AUSTRALIA - QUEENSLAND - Townsville - Ross River - Scientific instruments recovered***Former Notice* - 707(T)/2011 is cancelled

Maritime Safety Queensland (AA554536)

Cancel this notice on receipt.

Chart formerly affected - Aus 256 - Aus 257**929(T)/2011 AUSTRALIA - QUEENSLAND - Townsville - Ross River - Light buoy withdrawn***Former Notice* - 718(T)/2010 is cancelled

Maritime Safety Queensland (AA554603)

Cancel this notice on receipt.

Chart formerly affected - Aus 256 - Aus 257

930(T)/2011 AUSTRALIA - QUEENSLAND - Townsville - Ross River - Harbour works*Former Notice - 825(T)/2011 is cancelled**Date - Until 31 December 2012**Maritime Safety Queensland Notices 413/2011, 418/2011, 694(T)/2011, 819(T)/2011 (AA533266, AA533290, AA547521, AA553394)*

Harbour works associated with the construction of the Townsville Port Access Road Bridge are in progress.

Works on the middle pier structure of the bridge are in progress. The width of the river between the middle and northern pier will be progressively restricted. Light beacons mark the construction area.

Piles have been established to protect the construction area on the southern side. *Fl.R.4.3s* lights have been established on three of the series of piles to indicate the southern extremity of the navigable channel within the works area.

A starboard lateral light buoy, *Fl.G.3s*, exists in position 19° 16'.15 S 146° 50'.11 E.

The area between the middle and southern pier will remain closed till the completion of the works.

Vessels must not pass another vessel within the construction area where the width of the river has been reduced.

The maximum beam of vessels through the construction area is not to exceed 8m, however in exceptional circumstances the Regional Harbour Master may approve the transit of vessels above 8m beam.

Mariners must advise the construction site foreman of the intent to transit through the construction area by mobile phone on 0420372093 or 0427036506. Mariners must also announce their approach to the bridge on VHF Ch 16 to all vessels using the river and make necessary passing arrangements.

Priority should be given to a vessel transiting the channel in the direction of tidal flow. The give way vessel should stem the tide at a safe distance from the restricted area.

Mariners are advised to navigate with caution in the area.

Chart temporarily affected - Aus 257**931(T)/2011 AUSTRALIA - QUEENSLAND - Townsville - Ross River - Light buoy recovered***Former Notice - 1248(T)/2008 is cancelled**Maritime Safety Queensland Notice 847/2011 (AA554773)*

Cancel this notice on receipt.

Chart formerly affected - Aus 256 - Aus 257**932(T)/2011 AUSTRALIA - QUEENSLAND - Townsville - Scientific instruments recovered***Former Notice - 1080(T)/2010 is cancelled**Maritime Safety Queensland (AA354606)*

Cancel this notice on receipt.

Chart formerly affected - Aus 256 - Aus 257**933(T)/2011 AUSTRALIA - QUEENSLAND - Magnetic Island - Nelly Bay - Scientific instruments recovered***Former Notice - 657(T)/2011 is cancelled**Maritime Safety Queensland (AA554606)*

Cancel this notice on receipt.

Chart formerly affected - Aus 256

934(T)/2011 AUSTRALIA - QUEENSLAND - Magnetic Island - Scientific instrument recovered*Former Notice - 822(T)/2011 is cancelled*

Maritime Safety Queensland (AA554549)

Cancel this notice on receipt.

Chart formerly affected - Aus 256 - Aus 827**935(T)/2011 AUSTRALIA - QUEENSLAND - Oyster Point - Exclusion zone removed***Former Notice - 169(T)/2011 is cancelled*

Maritime Safety Queensland Notice 847/2011 (AA554773)

Cancel this notice on receipt.

Chart formerly affected - Aus 258**936(T)/2011 AUSTRALIA - QUEENSLAND - Cairns - Dredging operations completed***Former Notice - 828(T)/2011 is cancelled*

Maritime Safety Queensland Notice 739(T)/2011 (AA549219)

Cancel this notice on receipt.

Chart formerly affected - Aus 262 - Aus 263 - Aus 264 - Aus 830 - AX 63262**937(T)/2011 AUSTRALIA - QUEENSLAND - Karumba - Dredging operations***Date - Until 15 October 2011*

Maritime Safety Queensland Notice 734(T)/2011 (AA549218)

The dredge *Brisbane* and support vessels *Pacific Conquest* and *Investigator* are conducting dredging operations in Karumba Entrance Channel (17° 26'.1 S 140° 44'.2 E).

Mariners are advised to navigate with caution in the area.

Chart temporarily affected - Aus 6**938(T)/2011 AUSTRALIA - NORTHERN TERRITORY - Darwin - Frances Bay - Wreck***Former Notice - 711(T)/2011 is cancelled*

Darwin Port Corporation Notice 63(T)/2011 (AA553626)

A wreck, marked by two special light buoys Q.Y, exists in position 12° 28'.13 S 130° 51'.40 E.

A 100m exclusion exists around the wreck.

Mariners are advised to navigate with caution in the area.

Chart temporarily affected - Aus 24 - Aus 26 - Aus 28 - AX 72026**939(T)/2011 AUSTRALIA - NORTHERN TERRITORY - Darwin - Frances Bay - Mooring buoy***Date - Until 30 October 2011*

Darwin Port Corporation Notice 60(T)/2011 (AA553374)

A lit yellow cylindrical mooring buoy, *Fl.WR.2.5s*, exists in position 12° 28'.35 S 130° 51'.47 E.**Chart temporarily affected - Aus 24 - Aus 26 - Aus 28 - AX 72026**

940(T)/2011 AUSTRALIA - TIMOR SEA - Sahul Banks - Drilling operations*Former Notice* - 663(T)/2011 is cancelled*Date* - Until 31 October 2011

PTTEP Australasia Pty Ltd (AA549110)

The drill rig *Ocean Patriot* and support vessels *MV Pacific Vigour*, *MV Pacific Wrestler* and *MV Coral* are conducting drilling operations in positions 11° 48'.41 S 125° 22'.64 E and 11° 55'.84 S 125° 16'.34 E.

A 500m exclusion zone exists around the drill rig.

Chart temporarily affected - Aus 314 - AX 0314F

941(T)/2011 AUSTRALIA - WESTERN AUSTRALIA - Glomar Shoal - Scientific instruments westwards*Former Notice* - 574(T)/2011 is cancelled*Date* - Until 31 May 2012

MetOcean Engineers (AA552557)

Scientific instruments marked by special light buoys, *Fl(5)Y.20s*, exist in positions 19° 34'.97S 116° 28'.48E and 19° 35'.05S 116° 28'.47E.

Chart temporarily affected - Aus 327 - Aus 741

942(T)/2011 AUSTRALIA - WESTERN AUSTRALIA - Dampier Archipelago - Scientific instrument recovered northwestwards*Former Notice* - 387(T)/2011 is cancelled

MetOcean Engineers (AA552557)

Cancel this notice on receipt.

Chart formerly affected - Aus 327

943(T)/2011 AUSTRALIA - WESTERN AUSTRALIA - Rankin Bank - Scientific instruments northeastwards*Date* - Until 31 August 2012

MetOcean Engineers (AA552557)

Scientific instruments exist as follows:

<i>Position</i>	<i>Remarks</i>
19° 34'.11 S 116° 09'.06 E	<i>Fl(5)Y.20s</i>
19° 34'.30 S 116° 09'.06 E	<i>Fl(5)Y.20s</i>
19° 34'.35 S 116° 09'.51 E	subsurface.

Chart temporarily affected - Aus 327

944(T)/2011 AUSTRALIA - WESTERN AUSTRALIA - Fremantle - Owen Anchorage - Harbour works*Former Notice* - 778(T)/2011 is cancelled*Date* - Until 31 March 2012

Department of Transport WA Notice 108/2011 (AA553618)

Works associated with the construction of Port Coogee Marina are in progress (32° 06'.00 S 115° 45'.55 E).

An exclusion zone is marked by a silt curtain and special light buoys, Q. Y.

Mariners are advised to navigate with caution in the area.

Chart temporarily affected - Aus 117 - AX 70117

945(T)/2011 AUSTRALIA - TASMANIA - North West Bay - Beacon restored*Former Notice - 72(T)/2011 is cancelled*

Marine and Safety Tasmania Notice M116/2011 (AA552399)

Cancel this notice on receipt.

Chart formerly affected - Aus 171 - Aus 173 - Aus 174 - Aus 796**946(T)/2011 AUSTRALIA - TASMANIA - Hobart - Prince of Wales Bay - Harbour works***Date - Until 31 March 2012*

Marine and Safety Tasmania Notice M117/2011 (AA554803)

Harbour works associated with the construction of a new marina are in progress in an area bounded by the coast and special light buoys in the following positions:

42° 49'.75 S 147° 18'.15 E

42° 49'.68 S 147° 18'.12 E

42° 49'.63 S 147° 18'.14 E

42° 49'.57 S 147° 18'.22 E.

The barge will display appropriate lights and anchors deployed by the barge will be marked by orange light buoys.

Mariners are advised to navigate with caution in the area.

Chart temporarily affected - Aus 172**947(T)/2011 AUSTRALIA - TASMANIA - Pirates Bay - Light unlit***Date - Until 30 November 2011*

Marine and Safety Tasmania Notice M120/2011 (AA554978)

The light, *F.Bu* (43° 02'.03 S 147° 56'.75E), is unlit.

Chart temporarily affected - Aus 796 - Aus 797**948(T)/2011 AUSTRALIA - VICTORIA - Port Phillip - Werribee River - Dredging operations***Date - Until 30 September 2011*

Victorian Notice 103(T)/2011 (AA553614)

Dredging operations are in progress in Werribee River (37° 58'.38 S 144° 41'.17 E).

Dredge spoil will be deposited in the adjacent foreshore area to the north and east of the channel.

The dredge will display appropriate lights and shapes.

Mariners are advised to navigate with caution in the area.

Chart temporarily affected - Aus 143 - Aus 155

HYDROGRAPHIC REPORTS

<i>Locality</i>	<i>Report</i>	<i>Ship/Authority</i>	<i>Observer</i>
NSW- Dead Horse Bay	Nomenclature		A Bonato
WA- North West Cape	Light buoy	MV <i>Mermaid Sound</i>	

NAVIGATION WARNINGS

The following radio messages have been received during the period to 9 September 2011. Signal copies of these messages may be destroyed. It is recommended that the reprint of Navigational Warnings should be kept in a file or a book divided into areas. Cancellation should be made on receipt of signals and reprints.

Rigs on location other than those listed in the latest Section III summary are the subject of Radio Navigational Warnings. Rigs in transit will not be the subject of Warnings.

AUSCOAST WARNING

- 221 Starboard lateral light buoy, *Fl.G.5s*, established in position 14° 08'·3 S 144° 29'·0 E.
- 222 Cancelled.
- 223 Cancelled.
- 224 Special purpose vessel *Seisquest* conducting seismic survey towing eight 6000m cable in an area bounded by 19° 10'·0 S to 19° 36'·0 S and 115° 30'·0 E to 116° 02'·0 E. 5.0M clearance requested.
- 225 Cancelled.
- 226 Port Hedland light K1676.9 in position 20° 06'·49 S 118° 28'·12 E unreliable.

NAVAREA X WARNINGS

- 017 Confirmed 406 MHZ emergency beacon (EPIRB) registered to 12m sailing vessel *Tsarabanjina* detected vicinity 13° 36'·7 S 162° 12'·1 E at 062156UTC. Vessels approaching this area are requested to transit within 10M of beacon position, report present position and ETA to area. Lookout for signs of vessel in difficulty. Search operations underway. Reports to this station or RCC Australia via telephone +61262306811 INMARSAT through Les Burum (POR 212, IOR 312), special access code (SAC) 39, HF DSC 005030001, email: rccaus@amsa.gov.au or by fax +61262306868. Other vessels requested to monitor communications.

Navigational warnings in force as at 090001UTC SEP 11.**Auscoast**

2011 190 199 202 206 208 210 211 214 216 221 224 226

Navarea X

2011 006 017

Summary of mobile drilling rigs as at 090001UTC SEP 11.

<i>Name</i>	<i>Position</i>
Ocean Patriot	11° 57'·33 S 124° 36'·30 E
Ocean America	13° 12'·58 S 122° 37'·20 E
Nan Hai 6	19° 28'·00 S 116° 38'·00 E
Okha	19° 35'·40 S 116° 26'·80 E
Ensco 109	20° 17'·39 S 116° 16'·52 E
Atwood Osprey	20° 31'·12 S 114° 49'·26 E
Atwood Eagle	20° 12'·20 S 114° 47'·90 E
Maersk Discoverer	19° 24'·94 S 114° 20'·66 E
Transocean Legend	20° 04'·95 S 113° 49'·93 E

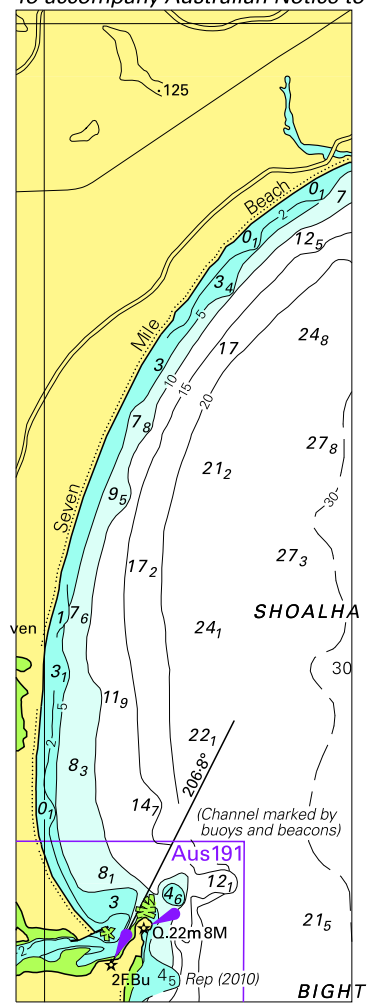
NAVAREA XIV WARNINGS

- 085 Cancelled.
- 086 Cancelled.
- 087 Cancelled.
- 088 Cancelled.
- 089 Cancelled.

Navarea XIV warnings in force as at 090001UTC SEP 11.

2011 084

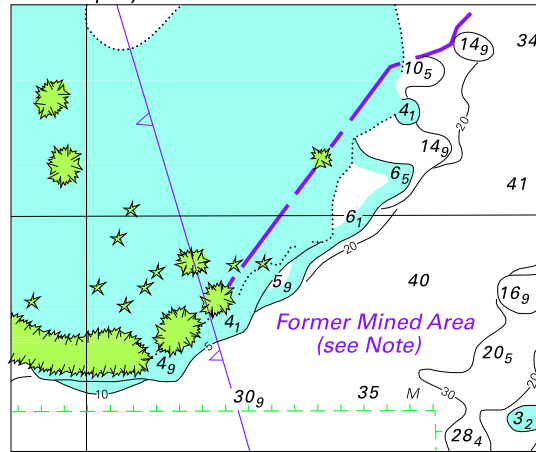
To accompany Australian Notice to Mariners 886/2011



© Commonwealth of Australia 2011

Block for chart Aus808 (44.4 x 131.2mm)

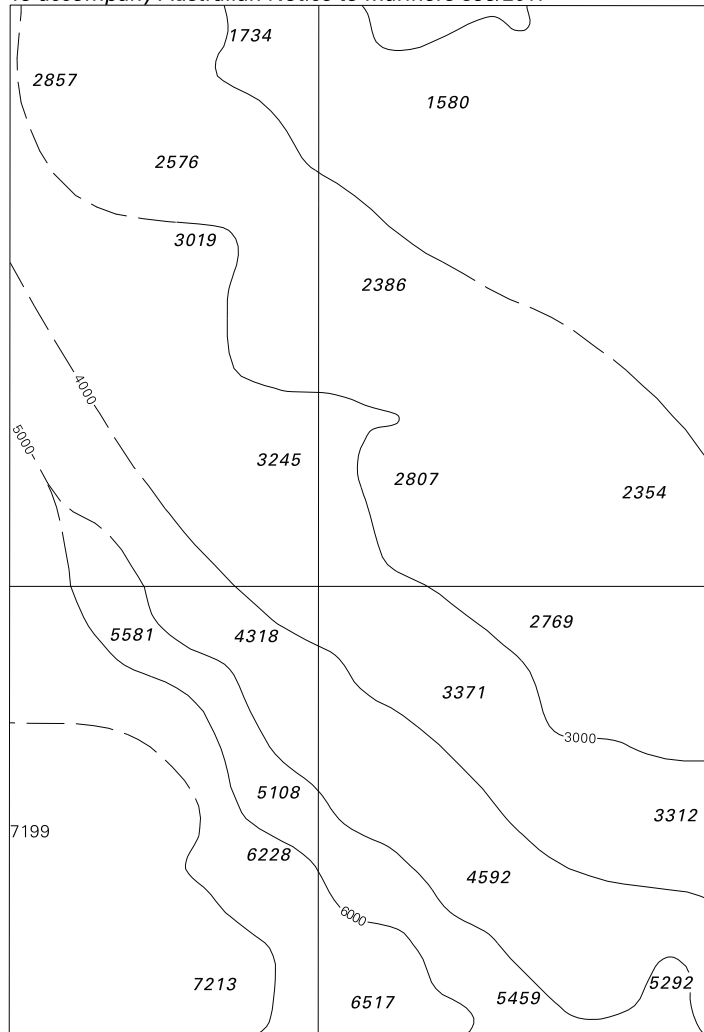
To accompany Australian Notice to Mariners 894/2011



© Commonwealth of Australia 2011 (70.4 x 59.1mm)

Block for chart Aus 835

To accompany Australian Notice to Mariners 895/2011

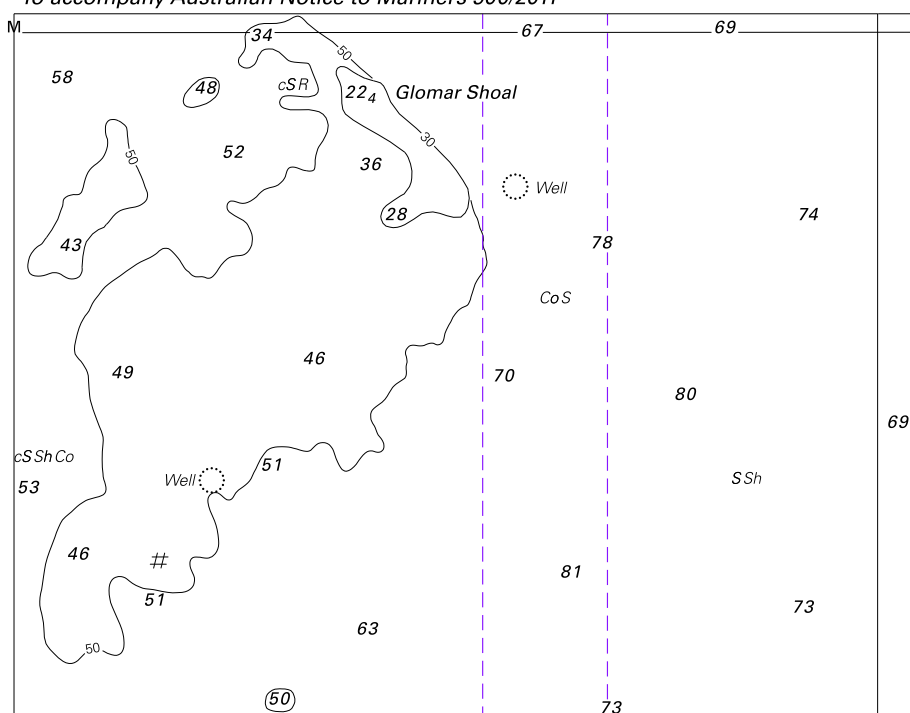


© Commonwealth of Australia

(93 x 136.2mm)

Block for chart Aus 397

To accompany Australian Notice to Mariners 900/2011



Block for Chart Aus 327

© Commonwealth of Australia 2011

(118.9 x 92.8mm)

To accompany Australian Notice to Mariners 900/2011

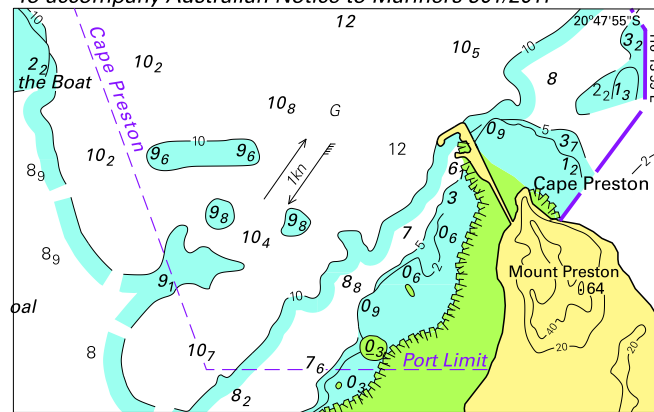


© Commonwealth of Australia 2011

Block for chart Aus 741

(91.3 x 86.3mm)

To accompany Australian Notice to Mariners 901/2011



© Commonwealth of Australia 2011 (85.6 x 53.4mm)
Block for chart Aus 743