

To accompany Australian Notice to Mariners 1312/2011

NON-TIDAL CHANGES IN SEA LEVEL AND
TIDAL STREAMS

Water level within Port Phillip is much affected by winds blowing for a long period in one direction and may remain above mean level continuously for some time after southerly gales, or below mean level continuously for some time after northerly gales.

At about the time of high and low water in the entrance the stream runs at its strongest, 4-7 knots. For details see Australia Pilot Vol II NP 14.

Note for chart Aus 143.

To accompany Australian Notice to Mariners 1312/2011

NON-TIDAL CHANGES IN SEA LEVEL AND
TIDAL STREAMS

Water level within Port Phillip is much affected by winds blowing for a long period in one direction and may remain above mean level continuously for some time after southerly gales, or below mean level continuously for some time after northerly gales.

At about the time of high and low water in the entrance the stream runs at its strongest, 4-7 knots. For details see Australia Pilot Vol II NP 14.

Note for chart Aus 144.

To accompany Australian Notice to Mariners 1312/2011

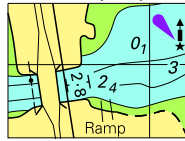
NON-TIDAL CHANGES IN SEA LEVEL AND
TIDAL STREAMS

Water level within Port Phillip is much affected by winds blowing for a long period in one direction and may remain above mean level continuously for some time after southerly gales, or below mean level continuously for some time after northerly gales.

At about the time of high and low water in the entrance the stream runs at its strongest, 4-7 knots. For details see Australia Pilot Vol II NP 14.

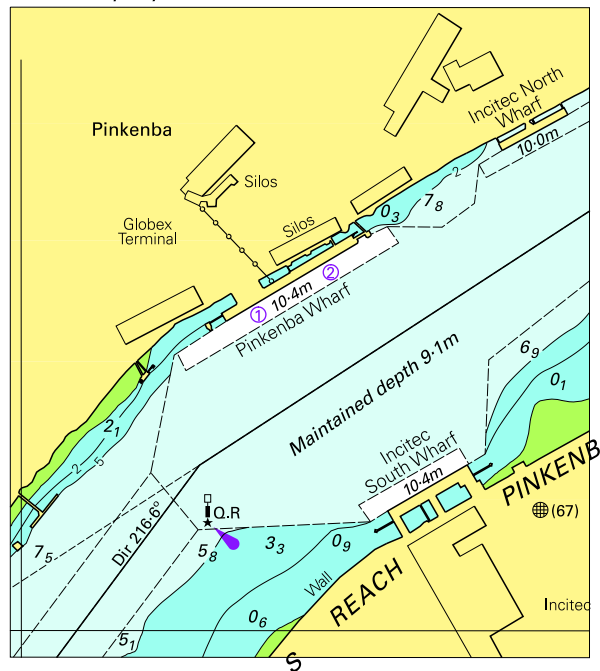
Note for chart Aus 158.

To accompany Australian Notice to Mariners 1298/2011



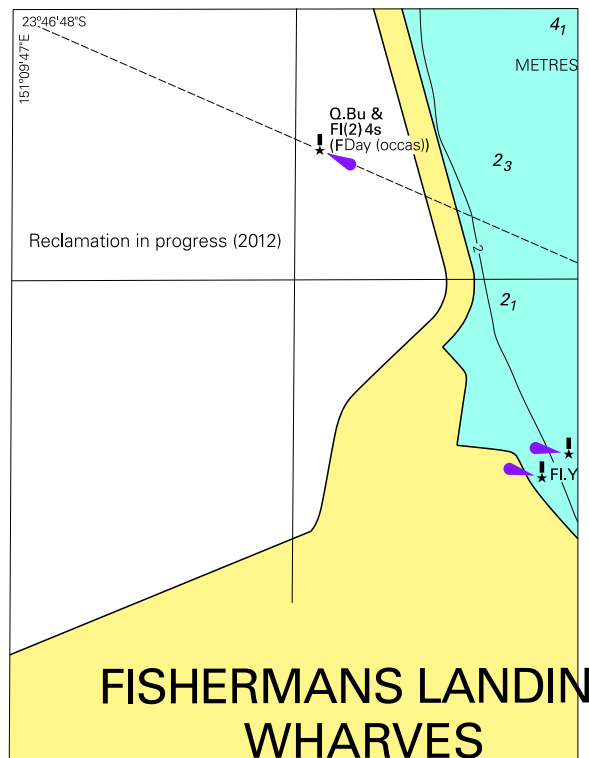
© Commonwealth of Australia 2011
Block for chart Aus 237
 (23.7 x 17.8mm)

To accompany Australian Notice to Mariners 1299/2011



© Commonwealth of Australia 2011
Block for chart Aus 238
 (76.6 x 86.0mm)

To accompany Australian Notice to Mariners 1301/2011

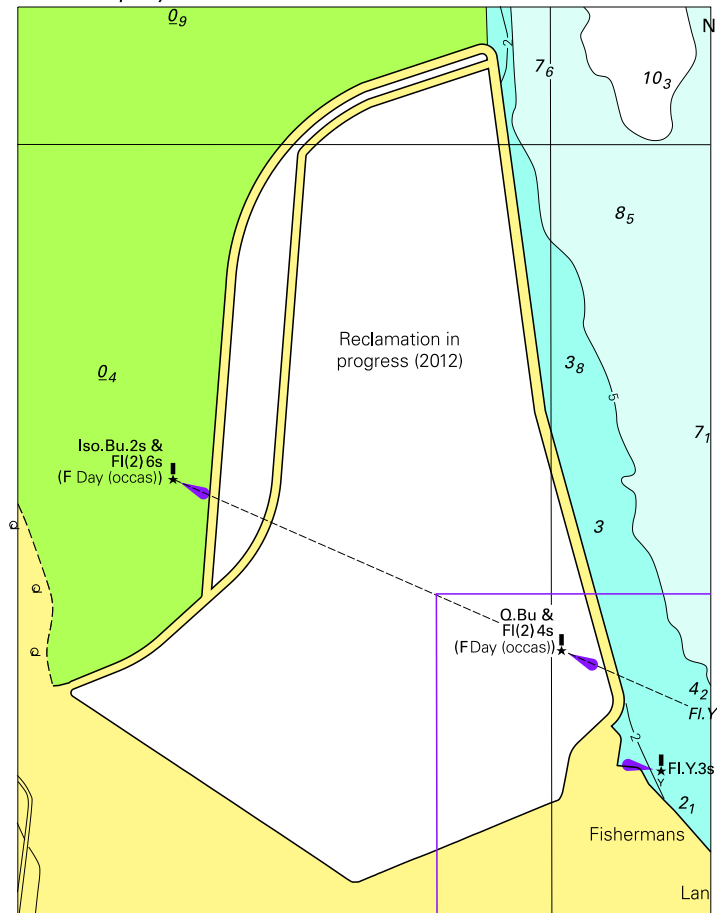


© Commonwealth of Australia 2011

Block for chart Aus 244

(75.2 x 99.3mm)

To accompany Australian Notice to Mariners 1301/2011



© Commonwealth of Australia 2011

(91.7 x 120.1mm)

Block for chart Aus 245

© Commonwealth of Australia 2011
Block for chart Aus 819 (70.4 x 35.9mm)

Block for chart Aus 141 (48.7 x 51.3)