



7 May 2010

Edition 9

Australian Notices to Mariners are the authority for correcting Australian Charts and Publications

---

# AUSTRALIAN NOTICES TO MARINERS

Notices 469 – 532 

Published fortnightly by the Australian Hydrographic Service

Commodore R. NAIRN RAN  
*Hydrographer of Australia*

---

## SECTIONS.

- I. **Australian Notices to Mariners, including blocks and notes.**
- II. **Hydrographic Reports.**
- III. **Navigational Warnings.**

## SUPPLEMENTS.

- I. **Tracings**
- II. **Cumulative List of Australian Notices to Mariners.**
- III. **Temporary and Preliminary Notices in force.**
- IV. **Amendments to Admiralty List of Lights and Fog Signals (Vol K),  
Radio Signals (NP 281(2), 282, 283(2), 285, 286(4)) and Sailing  
Directions (NP 9, 13, 14, 15, 33, 34, 35, 36, 39, 44, 51, 60, 61, 62, 100, 136).**

---

© Commonwealth of Australia 2010

This work is copyright. Apart from any use permitted under the Copyright Act 1968, no part may be reproduced by any process, adapted, communicated or commercially exploited without prior written permission from The Commonwealth represented by the Australian Hydrographic Service.

## **IMPORTANT NOTICE**

This edition of Notices to Mariners includes all significant information affecting AHS products which the AHS has become aware of since the last edition. All reasonable efforts have been made to ensure the accuracy and completeness of the information, including third party information, on which these updates are based. The AHS regards third parties from which it receives information as reliable, however the AHS cannot verify all such information and errors may therefore exist. The AHS does not accept liability for errors in third party information.

---

## **GENERAL INSTRUCTIONS**

The substance of these notices should be inserted on the charts affected.

Bearings are referred to the true compass and are reckoned clockwise from North; those relating to lights are given as seen by an observer from seaward. Positions quoted in permanent notices relate to the horizontal datum for the chart(s). When preliminary or temporary notices affect multiple charts, positions will be provided in relation to only one horizontal datum and that datum will be specified. When the multiple charts do not have a common horizontal datum, mariners will be required to adjust the position(s) for those charts not on the specified datum. The range quoted for a light is its nominal range. Depths are with reference to the chart datum of each chart. Heights are above mean high water springs or mean higher high water, as appropriate.

The capital letter (P) or (T) after the number of any notice denotes a preliminary or temporary notice respectively, which are contained separately at the end of the permanent notices. A star (\*) adjacent to the number of a notice indicates that the notice is based on original information.

---

## **REPORTING OF DANGERS**

Mariners are particularly requested to notify the AUSTRALIAN HYDROGRAPHIC SERVICE, Locked Bag 8801 Wollongong, NSW 2500 (Fax 02-4223 6599, e-mail [Hydro.NTM@defence.gov.au](mailto:Hydro.NTM@defence.gov.au) or, alternatively by filling in and submitting the [Hydrographic Notes](#) forms located on the web site – [www.hydro.gov.au](http://www.hydro.gov.au)), immediately on the discovery of new dangers or suspected dangers to navigation. For changes or defects in aids to navigation notify AusSAR (Fax 02-6230 6868 or email [rccaus@amsa.gov.au](mailto:rccaus@amsa.gov.au)).

---

## **AUTHORISED USE**

Copies of Australian notices are available free of charge from the Australian Hydrographic Service (AHS) website ([www.hydro.gov.au](http://www.hydro.gov.au)) and through the eNotices (email) service ([www.hydro.gov.au/enotices/enotices.htm](http://www.hydro.gov.au/enotices/enotices.htm)).

Individual Notices may be copied for the purpose of inserting Notice substance on official charts and publications. Paper copies may be printed by chart agents and distributed to customers on a cost recovery basis. Participating chart agents are listed on the AHS website as providing a 'Paper Notices to Mariners' service ([www.hydro.gov.au/prodserv/distributors/distributors.htm](http://www.hydro.gov.au/prodserv/distributors/distributors.htm)). Copies of the notices may not be sold for profit without prior written agreement.

## NUMERICAL INDEX OF NOTICES TO MARINERS

### Edition No 9

Notices	Aus Chart, INT Chart, ENC Cell, AHP
469.....	Aus 267, AU240150, 313140, 412131, 414129, 417122, 5XXX50, 5219P1, 5219P3, 5523P1, 5523P2, NP 14
470.....	Aus 192
471.....	Aus 201
472.....	Aus 202
473.....	Aus 219
474.....	Aus 219
475.....	Aus 4060, 4601, 4602, INT 60, 601, 602
476.....	Aus 259, 267, 828
477.....	Aus 523, 644
478.....	Aus 387, 645
479.....	Aus 4720, AX 4720F, INT 720
480.....	Aus 4721, AX 4721F, INT 721
481.....	Aus 414, 4603, 4722, INT 603, 722, AX 4603F, 4722F
482.....	Aus 323, 324, 415, 4722, AX 0415F, 4722F, INT 722
483.....	Aus 744
484.....	Aus 333, 753, AX 6032G, 6032S
485.....	Aus 119
486.....	Aus 763
487.....	Aus 341
488.....	Aus 342
489.....	Aus 776, AX 0776E
490.....	Aus 130, 137, 138, 345, 780, 781
491.....	Aus 127
492.....	Aus 178
493.....	Aus 422, 792, 793
494.....	Aus 173, 174, 794, 795
495.....	Aus 766
496.....	Aus 800
497.....	Aus 153, 157
498.....	Aus 4622, INT 622
499(T).....	Aus 193, 807, 808, AX 0808E, 60193, 67192, 70193, AU436150, 5XX193
500(T).....	Aus 207, 208, AU5XX208
501(T).....	Aus 236, AU428153
502(T).....	Aus 237, 238, AU5237X8
503(T).....	Aus 236, AU428153
504(T).....	Aus 235, 236, AU428153
505(T).....	Aus 365, AU427153
506(T).....	Aus 246, AU424151
507(T).....	Aus 367, 822, AX 0367E, 0822E, AU423150
508(T).....	Aus 260, 367, 822, AX 0260E, 0367E, 0822E, 60260, AU423150
509(T).....	Aus 260, 261, 367, 822, AX 0260E, 0367E, 0822E, 60260, 67261, AU423150, 5261P2
510(T).....	Aus 249, 250, AX 0249E, AU5250P2
511(T).....	Aus 252, 254, 824, AU421119, 5254P1
512(T).....	Aus 252, AU421148
513(T).....	Aus 253, 268, AU5268P2
514(T).....	Aus 263, AU5262X4
515(T).....	Aus 4604, AX 4604F, INT 604, AU130150
516(P).....	Aus 289, 296, AU411141
517(T).....	Aus 57, 58, 59, 741, 742, AU421116, 5XXX58
518(T).....	Aus 57, 58, 59, 327, 328, 741, 742, AU421115, 421116, 5XXX58
519(T).....	Aus 327, 741, 742, AU421116
520(T).....	Aus 414, 415, 4603, 4708, AX 0415F, 4603F, 4708F, INT 603, 708, AU130090
521(T).....	Aus 742, AU421115
522(T).....	Aus 415, 4708, AX 0415F, 4708F, INT 708, AU130090
523(T).....	Aus 64, 327, 328, 329, 415, 416, 742, 743, 744, 4603, 4708, AX 0415F, 4603F, 4708F, INT 603, 708, AU130090, 320114, 321114, 422114, 422115
524(T).....	Aus 112, 116, 117, 334, 754, 755, AX 0334E, 0754E, 0755E, 63112, 66002, 70117, AU432115, 433115
525(T).....	Aus 777, AU5777P1
526(P).....	Aus 140, 348, 349, AU439141
527(T).....	Aus 796, AU444147
528(T).....	Aus 173, 795, AU444147
529(T).....	Aus 171, 796, AU443147
530(T).....	Aus 143, 155, AU439145
531(T).....	Aus 154, AU5XX154
532(T).....	Aus 357A, 487, 800, 802, AU439146, 439147, 439148, 440147, 440148

## NUMERICAL INDEX OF CHARTS AFFECTED

## Edition No 9

Aus Chart	Notices	Aus Chart	Notices
Aus 57.....	517(T), 518(T)	Aus 349 .....	526(P)
Aus 58.....	517(T), 518(T)	Aus 357A .....	532(T)
Aus 59.....	517(T), 518(T)	Aus 365 .....	505(T)
Aus 64.....	523(T)	Aus 367 .....	507(T), 508(T), 509(T)
Aus 112.....	524(T)	Aus 387 .....	478
Aus 116.....	524(T)	Aus 414 .....	481, 520(T)
Aus 117.....	524(T)	Aus 415 .....	482, 520(T), 522(T), 523(T)
Aus 119.....	485	Aus 416 .....	523(T)
Aus 127.....	491	Aus 422 .....	493
Aus 130.....	490	Aus 487 .....	532(T)
Aus 137.....	490	Aus 523 .....	477
Aus 138.....	490	Aus 644 .....	477
Aus 140.....	526(P)	Aus 645 .....	478
Aus 143.....	530(T)	Aus 741 .....	517(T), 518(T), 519(T)
Aus 153.....	497	Aus 742 .....	517(T), 518(T), 519(T), 521(T), 523(T)
Aus 154.....	531(T)	Aus 743 .....	523(T)
Aus 155.....	530(T)	Aus 744 .....	483, 523(T)
Aus 157.....	497	Aus 753 .....	484
Aus 171.....	529(T)	Aus 754 .....	524(T)
Aus 173.....	494, 528(T)	Aus 755 .....	524(T)
Aus 174.....	494	Aus 763 .....	486
Aus 178.....	492	Aus 766 .....	495
Aus 192.....	470	Aus 776 .....	489
Aus 193.....	499(T)	Aus 777 .....	525(T)
Aus 201.....	471	Aus 780 .....	490
Aus 202.....	472	Aus 781 .....	490
Aus 207.....	500(T)	Aus 792 .....	493
Aus 208.....	500(T)	Aus 793 .....	493
Aus 219.....	473, 474	Aus 794 .....	494
Aus 235.....	504(T)	Aus 795 .....	494, 528(T)
Aus 236.....	501(T), 503(T), 504(T)	Aus 796 .....	527(T), 529(T)
Aus 237.....	502(T)	Aus 800 .....	496, 532(T)
Aus 238.....	502(T)	Aus 802 .....	532(T)
Aus 246.....	506(T)	Aus 807 .....	499(T)
Aus 249.....	510(T)	Aus 808 .....	499(T)
Aus 250.....	510(T)	Aus 822 .....	507(T), 508(T), 509(T)
Aus 252.....	511(T), 512(T)	Aus 824 .....	511(T)
Aus 253.....	513(T)	Aus 828 .....	476
Aus 254.....	511(T)	Aus 4060 .....	475
Aus 259.....	476	Aus 4601 .....	475
Aus 260.....	508(T), 509(T)	Aus 4602 .....	475
Aus 261.....	509(T)	Aus 4603 .....	481, 520(T), 523(T)
Aus 263.....	514(T)	Aus 4604 .....	515(T)
Aus 267.....	469, 476	Aus 4622 .....	498
Aus 268.....	513(T)	Aus 4708 .....	520(T), 522(T), 523(T)
Aus 289.....	516(P)	Aus 4720 .....	479
Aus 296.....	516(P)	Aus 4721 .....	480
Aus 323.....	482	Aus 4722 .....	481, 482
Aus 324.....	482	AX 0249E .....	510(T)
Aus 327.....	518(T), 519(T), 523(T)	AX 0260E .....	508(T), 509(T)
Aus 328.....	518(T), 523(T)	AX 0334E .....	524(T)
Aus 329.....	523(T)	AX 0367E .....	507(T), 508(T), 509(T)
Aus 333.....	484	AX 0415F.....	482, 520(T), 522(T), 523(T)
Aus 334.....	524(T)	AX 0754E .....	524(T)
Aus 341.....	487	AX 0755E .....	524(T)
Aus 342.....	488	AX 0776E .....	489
Aus 345.....	490	AX 0808E .....	499(T)
Aus 348.....	526(P)		

Aus Chart	Notices	ENC Cell	Notices
AX 0822E .....	507(T), 508(T), 509(T)	AU130090.....	520(T), 522(T), 523(T)
AX 4603F .....	481, 520(T), 523(T)	AU130150.....	515(T)
AX 4604F .....	515(T)	AU240150.....	469
AX 4708F .....	520(T), 522(T), 523(T)	AU313140.....	469
AX 4720F .....	479	AU320114.....	523(T)
AX 4721F .....	480	AU321114.....	523(T)
AX 4722F .....	481, 482	AU411141.....	516(P)
AX 60193 .....	499(T)	AU412131.....	469
AX 60260 .....	508(T), 509(T)	AU414129.....	469
AX 6032G .....	484	AU417122.....	469
AX 6032S .....	484	AU421115.....	518(T), 521(T)
AX 63112 .....	524(T)	AU421116.....	517(T), 518(T), 519(T)
AX 66002 .....	524(T)	AU421119.....	511(T)
AX 67192 .....	499(T)	AU421148.....	512(T)
AX 67261 .....	509(T)	AU422114.....	523(T)
AX 70117 .....	524(T)	AU422115.....	523(T)
AX 70193 .....	499(T)	AU423150.....	507(T), 508(T), 509(T)
		AU424151.....	506(T)
		AU427153.....	505(T)
		AU428153.....	501(T), 503(T), 504(T)
		AU432115.....	524(T)
		AU433115.....	524(T)
		AU436150.....	499(T)
		AU439141.....	526(P)
		AU439145.....	530(T)
		AU439146.....	532(T)
		AU439147.....	532(T)
		AU439148.....	532(T)
		AU440147.....	532(T)
		AU440148.....	532(T)
		AU443147.....	529(T)
		AU444147.....	527(T), 528(T)
		AU5XXX50 .....	469
		AU5XXX58 .....	517(T), 518(T)
		AU5XX154.....	531(T)
		AU5XX193.....	499(T)
		AU5XX208.....	500(T)
		AU5219P1 .....	469
		AU5219P3 .....	469
		AU5237X8 .....	502(T)
		AU5250P2 .....	510(T)
		AU5254P1 .....	511(T)
		AU5261P2 .....	509(T)
		AU5262X4 .....	514(T)
		AU5268P2 .....	513(T)
		AU5523P1 .....	469
		AU5523P2 .....	469
		AU5777P1 .....	525(T)
INT Chart	Notices		
INT 60 .....	475		
INT 601 .....	475		
INT 602 .....	475		
INT 603 .....	481, 520(T), 523(T)		
INT 604 .....	515(T)		
INT 622 .....	498		
INT 708 .....	520(T), 522(T), 523(T)		
INT 720 .....	479		
INT 721 .....	480		
INT 722 .....	481, 482		

**469 AUSTRALIA - Product**

Australia n Hydrographic Service (AA460867, AA467667, AA469328), UKHO (AA469461)

**New Chart**

<i>Chart</i>	<i>Published</i>	<i>Title and description of amendments</i>	<i>Scale</i>	<i>Index Chart</i>	<i>Price</i>
Aus 267	26/3/2010	Australia - East Coast - Queensland - Port of Lucinda 18° 28'.60 S - 18° 33'.0 S 146° 18'.50 E - 146° 25'.80 E Plan: Lucinda Offshore Wharf 18° 31'.00 S - 18° 31'.50 S 146° 23'.00 E - 146° 23'.50 E <i>New chart providing improved coverage of the Port of Lucinda.</i>	1:12 500       1:5 000	Aus 5000	\$35.00

**New Electronic Navigation Chart (Seafarer ENC)**

<i>Cell Name</i>	<i>Released</i>	<i>Title</i>
AU240150	May 2010	Australia East Coast - Bermagui to Coffs Harbour
AU313140	May 2010	Gulf of Carpentaria - Cell 2
AU412131	May 2010	Timor Sea- Dundas Strait
AU414129	May 2010	Northern Territory - Anson Bay to Cape Dombey
AU417122	May 2010	Western Australia - Cape Leveque to Lacepede Islands
AU5XXX50	May 2010	Western Australia - Approaches to Broome
AU5219P1	May 2010	New South Wales - Cape Hawke Harbour
AU5219P3	May 2010	New South Wales - Hastings River including Port Macquarie Plan

**Electronic Navigation Chart (Seafarer ENC) permanently withdrawn**

*Cell*  
AU5523P1  
AU5523P2

**Admiralty publication**

<i>NP No</i>	<i>Title</i>	<i>Date</i>	<i>Remarks</i>
NP 14	Australian Pilot Volume 3 Edition 2010/11.	27/5/2010	The 10th edition is thereby cancelled.

For further details refer to the AHS website at [www.hydro.gov.au](http://www.hydro.gov.au) for new edition and new chart stock arrival information.

When placing orders with a chart agent, mariners should advise whether their order pertains to the current edition or the new edition.

**470\* AUSTRALIA - NEW SOUTH WALES - Twofold Bay - Lookout Point to Worang Point - Contours**

Australian Hydrographic Service (AA464994)

**Aus 192 [1092/2009]**

Insert	contour to semi enclose depth, 0 <sub>4</sub> m, to NW	37° 04'.57 S	149° 54'.83 E
	contour to enclose depth, 7 <sub>8</sub> m	37° 03'.25 S	149° 56'.27 E

**471\* AUSTRALIA - NEW SOUTH WALES - Port Jackson - Deviation Cut - Depths**

Sydney Ports Corporation (DHDB 1039570)

**Aus 201 [350/2010]**

Insert	accompanying block	33° 50'.7 S	151° 16'.0 E
--------	--------------------	-------------	--------------

**472\* AUSTRALIA - NEW SOUTH WALES - Port Jackson - Walsh Bay - Infrastructure**

Australian Hydrographic Service (AA466415)

**Aus 202 [350/2010]**

Insert	accompanying block	33° 51'.3 S	151° 12'.5 E
--------	--------------------	-------------	--------------

**473\* AUSTRALIA - NEW SOUTH WALES - Camden Haven - Contour**  
Australian Hydrographic Service (AA464918)

**Aus 219 (plan, Camden Haven) [288/2010]**

Insert	accompanying block	31° 38'.1 S	152° 50'.1 E
--------	--------------------	-------------	--------------

**474\* AUSTRALIA - NEW SOUTH WALES - Port Macquarie - Bearing**  
Australian Hydrographic Service (AA464921)

**Aus 219 (plan, Port Macquarie) [473/2010]**

Amend	legend to <i>Dir 260.7°</i>	31° 25'.46 S	152° 55'.94 E
-------	-----------------------------	--------------	---------------

**475\* PACIFIC OCEAN - West Norfolk Ridge to Gifford Tablemount - Depths**  
Geoscience Australia (AA465931)

**Aus 4060 (INT 60) [290/2010]**

Insert	depth, <i>908m</i> , and extend contour W to enclose	34° 10'.9 S	167° 46'.3 E
	depth, <i>942m</i> , enclosed by contour	27° 40'.8 S	161° 38'.8 E
	depth, <i>977m</i> , enclosed by contour	26° 51'.5 S	161° 44'.1 E

Delete	depth, 1185m	34° 16'.0 S	167° 37'.0 E
--------	--------------	-------------	--------------

**Aus 4601 (INT 601) [1319/2009]**

Insert	depth, <i>908m</i> , enclosed by contour	34° 10'.9 S	167° 46'.3 E
--------	--	-------------	--------------

Delete	depth, 1185m	34° 16'.0 S	167° 37'.0 E
--------	--------------	-------------	--------------

**Aus 4602 (INT 602) [290/2010]**

Insert	depth, <i>908m</i> , enclosed by contour	34° 10'.9 S	167° 46'.3 E
	depth, <i>942m</i> , enclosed by contour	27° 40'.8 S	161° 38'.8 E
	depth, <i>977m</i> , enclosed by contour	26° 51'.5 S	161° 44'.1 E

Delete	depth, 1185m	34° 16'.0 S	167° 37'.0 E
--------	--------------	-------------	--------------

**476\* AUSTRALIA - QUEENSLAND - Lucinda - Chart limits; compass rose**

Australian Hydrographic Service (AA467505)

**Aus 259 [1095/2009]**

Insert	magenta limits, with legend <i>Aus 267</i> in NW corner, between	18° 31'.7 S 18° 28'.6 S 18° 28'.6 S 18° 31'.7 S	146° 18'.5 E 146° 18'.5 E 146° 25'.8 E 146° 25'.8 E
Delete	magenta limits, with legend <i>See Plan</i> , centred on	18° 30'.0 S	146° 21'.0 E

**Aus 259 (plan, Port of Lucinda)**

Delete	plan, PORT OF LUCINDA	18° 18'.0 S	146° 23'.0 E
--------	-----------------------	-------------	--------------

**Aus 267 [NC 26/3/2010]**

Amend	legend to <i>7°15' E 2014 (1'W)</i>	18° 31'.86 S	146° 22'.77 E
	legend to <i>7°15' E 2014 (1'W)</i>	18° 29'.86 S	146° 25'.02 E
	legend to <i>7°15' E 2014 (1'W)</i>	18° 29'.86 S	146° 20'.62 E

**Aus 828 [645/2009]**

Insert	magenta limits, with legend <i>Aus 267</i> in SW corner, between	18° 33'.0 S 18° 33'.0 S 18° 28'.6 S 18° 28'.6 S 18° 33'.0 S	146° 18'.5 E 146° 25'.8 E 146° 25'.8 E 146° 18'.5 E 146° 18'.5 E
--------	--	---	--

**477\* PAPUA NEW GUINEA - Salamaua Harbour to Lae - Plans withdrawn; chart limits; ZOC diagram; legends**

Australian Hydrographic Service (AA458132)

**Aus 523 [202/2010]**

Insert	accompanying block magenta line, between	6° 53'.0 S 7° 03'.60 S 7° 03'.60 S 7° 01'.34 S	147° 04'.0 E 147° 09'.39 E 147° 11'.00 E 147° 11'.00 E
Substitute	accompanying ZOC diagram for reliability diagram	6° 35'.0 S	147° 34'.0 E
Amend	legend to <i>Unsurveyed</i> legend to <i>Unsurveyed</i> legend to <i>Unsurveyed</i>	6° 44'.4 S 6° 46'.0 S 6° 45'.0 S	147° 39'.5 E 147° 27'.8 E 147° 17'.0 E
Delete	note, UNSURVEYED	6° 41'.0 S	147° 23'.0 E
<b>Aus 523 (plan, Approaches to Lae)</b>			
Delete	plan, APPROACHES TO LAE	7° 19'.0 S	146° 55'.0 E
<b>Aus 523 (plan, Lae Harbour)</b>			
Delete	plan, LAE HARBOUR	7° 09'.0 S	146° 53'.0 E
<b>Aus 523 (plan, Voco Point)</b>			
Delete	plan, VOCO POINT	7° 00'.0 S	146° 50'.0 E
<b>Aus 644 (plan, Salamaua Harbour) [992/2009]</b>			
Delete	plan, SALAMAUA HARBOUR	7° 02'.0 S	147° 03'.0 E

**478\* PAPUA NEW GUINEA - Basamuk - Light**  
National Maritime Safety Authority PNG (AA467433 - AA467435)

**Aus 387** [415/2010]  
Amend light to *Fl(2)6s 10M* 5° 32'.3 S 146° 08'.3 E

**Aus 645** [415/2010]  
Amend light to *Fl(2)6s 9m 10M* 5° 32'.28 S 146° 08'.27 E

**Aus 645 (plan, Port of Basamuk)**  
Amend light to *Fl(2)6s 9m 10M* 5° 32'.28 S 146° 08'.27 E

**479 INDONESIA - Irian Jaya - Merauke - Light altered**  
BA Notice 15/1809/2010 (AA465694)

**Aus 4720 (INT 720)** [359/2009]  
Amend light to *Fl(4)27M* 8° 30'.0 S 140° 22'.5 E

**AX 4720F** [359/2009]  
Amend light to *Fl(4)27M* 8° 30'.0 S 140° 22'.5 E

**480\* INDONESIA - Pulau Roti - Contours**  
Australian Hydrographic Service (AA457402)

**Aus 4721 (INT 721)** [416/2010]  
Amend contour value to *200m* 10° 34'.0 S 123° 09'.0 E  
contour value to *500m* 10° 33'.0 S 123° 06'.0 E

**AX 4721F** [416/2010]  
Amend contour value to *200m* 10° 34'.0 S 123° 09'.0 E  
contour value to *500m* 10° 33'.0 S 123° 06'.0 E

**481 INDONESIA - Sumba - Light established**  
BA Notice 15/1772/2010 (AA465695)

**Aus 414** [303/2009]  
Insert light, *Fl.18M* 10° 14'.9 S 120° 39'.6 E

Delete depth, 6fm 10° 15'.5 S 120° 39'.0 E  
depth, 4<sub>3</sub>fm 10° 14'.5 S 120° 40'.5 E

**Aus 4603 (INT 603)** [416/2010]  
Insert light 10° 14'.9 S 120° 39'.6 E

**Aus 4722 (INT 722)** [416/2010]  
Insert light, *Fl.18M* 10° 14'.9 S 120° 39'.6 E

Delete depth, 8m 10° 15'.0 S 120° 40'.0 E

**AX 4603F** [416/2010]  
Insert light 10° 14'.9 S 120° 39'.6 E

**AX 4722F** [416/2010]  
Insert light, *Fl.18M* 10° 14'.9 S 120° 39'.6 E

Delete depth, 8m 10° 15'.0 S 120° 40'.0 E

**482\* AUSTRALIA - WESTERN AUSTRALIA - Lacepede Islands - East Island - Light**  
 Australian Maritime Safety Authority, Australian Hydrographic Service (AA305030)

<b>Aus 323</b> [206/2010]			
Amend	light range to 15M	16° 54'.0 S	122° 11'.8 E
<b>Aus 324</b> [33/2010]			
Amend	light range to 15M	16° 54'.1 S	122° 11'.7 E
<b>Aus 415</b> [257/2010]			
Amend	light range to 15M	16° 54'.0 S	122° 11'.8 E
<b>Aus 4722 (INT 722)</b> [481/2010]			
Amend	light range to 15M	16° 54'.0 S	122° 11'.8 E
<b>AX 0415F</b> [257/2010]			
Amend	light range to 15M	16° 54'.0 S	122° 11'.8 E
<b>AX 4722F</b> [481/2010]			
Amend	light range to 15M	16° 54'.0 S	122° 11'.8 E

**483\* AUSTRALIA - WESTERN AUSTRALIA - Point Murat - Naval waters**  
 Department of Defence (DHDB 1440966)

<b>Aus 744 (plan, Point Murat Wharf)</b> [419/2010]			
Insert	magenta dashed line, between	21° 48'.796 S	114° 11'.411 E
		21° 48'.905 S	114° 11'.958 E
		21° 49'.292 S	114° 11'.862 E
		21° 49'.161 S	114° 11'.259 E
		21° 49'.068 S	114° 11'.282 E
Delete	dashed line, centred on	21° 49'.0 S	114° 11'.7 E

**484\* AUSTRALIA - WESTERN AUSTRALIA - Cervantes - Light**  
 Department of Transport WA, Australian Hydrographic Service (AA465765)

<b>Aus 333</b> [1312/2009]			
Amend	light range to 10M	30° 28'.6 S	115° 04'.3 E
<b>Aus 753</b> [38/2010]			
Amend	light to Oc.3-5s 8m 10M	30° 28'.6 S	115° 04'.3 E
<b>AX 6032G</b> [NE 12/3/2010]			
Amend	light to Ldg Oc.3-5s & Fl.2s 10M	30° 28'.6 S	115° 04'.3 E
<b>AX 6032S</b> [NE 12/3/2010]			
Amend	light to Ldg Oc.3-5s & Fl.2s 10M	30° 28'.6 S	115° 04'.3 E

**485\* AUSTRALIA - WESTERN AUSTRALIA - Ghost Reef - Contour**  
 Australian Hydrographic Service (AA464992)

<b>Aus 119</b> [211/2010]			
Insert	contour, between	34° 14'.91 S	121° 49'.84 E
		34° 14'.77 S	121° 49'.87 E
	20m contour value	34° 14'.85 S	121° 50'.07 E

**486\* AUSTRALIA - WESTERN AUSTRALIA - Sandy Bight - Contour**  
Australian Hydrographic Service (AA456497)

**Aus 763 [875/2009]**

Insert	broken contour to enclose depth, 24m	33° 57'.9 S	123° 20'.6 E
--------	--------------------------------------	-------------	--------------

**487\* AUSTRALIA - SOUTH AUSTRALIA - Masillon Island - Contour**  
Australian Hydrographic Service (AA455276)

**Aus 341 [655/2009]**

Insert	contour to enclose depth, 30m	32° 32'.4 S	133° 15'.9 E
--------	-------------------------------	-------------	--------------

**488\* AUSTRALIA - SOUTH AUSTRALIA - Flinders Island - Contour**  
Australian Hydrographic Service (AA457479)

**Aus 342 [876/2009]**

Insert	broken contour, between	33° 39'.63 S	134° 23'.06 E
		33° 37'.75 S	134° 24'.45 E
		33° 38'.60 S	134° 25'.94 E
Delete	contour, between	33° 39'.6 S	134° 23'.1 E
		33° 38'.6 S	134° 25'.9 E

**489\* AUSTRALIA - SOUTH AUSTRALIA - Williams Island to Winceby Island - Depths; chart note; contours**  
Australian Hydrographic Service (AA465172, AA467543, AA457901)

**Aus 776 [427/2010]**

Insert	accompanying block	35° 05'.0 S	136° 55'.0 E
	contour to enclose depth, 20m	34° 35'.07 S	136° 07'.74 E
	contour to semi enclose depth, 5m, to W	34° 55'.65 S	136° 59'.84 E
Delete	note, LOCAL MAGNETIC ANOMALY	35° 11'.0 S	137° 18'.0 E

**AX 0776E [427/2010]**

Insert	accompanying block	35° 05'.0 S	136° 55'.0 E
	contour to enclose depth, 20m	34° 35'.07 S	136° 07'.74 E
	contour to semi enclose depth, 5m, to W	34° 55'.65 S	136° 59'.84 E
Delete	note, LOCAL MAGNETIC ANOMALY	35° 11'.0 S	137° 18'.0 E

**490\* AUSTRALIA - SOUTH AUSTRALIA - Adelaide - Prohibited anchorage area; infrastructure**

Department for Transport, Energy and Infrastructure SA Notice 16/2010 (AA466301), HydroSurvey Australia (AA445506, AA445507)

**Aus 130 [1110/2009]**

Insert	anchoring prohibited limit, between	34° 48'.735 S	138° 20'.204 E
		34° 47'.767 S	138° 22'.302 E
		34° 47'.577 S	138° 26'.638 E
		34° 47'.427 S	138° 26'.638 E
		34° 46'.597 S	138° 21'.559 E
		34° 46'.595 S	138° 20'.208 E
		34° 48'.735 S	138° 20'.204 E
	accompanying block	34° 47'.3 S	138° 31'.0 E
Delete	anchoring prohibited limit, centred on	34° 47'.2 S	138° 22'.0 E

**Aus 137 [264/2010]**

Insert	anchoring prohibited limit, between	34° 47'.594 S	138° 26'.200 E
		34° 47'.577 S	138° 26'.638 E
		34° 47'.427 S	138° 26'.638 E
		34° 47'.354 S	138° 26'.200 E

**Aus 138 [264/2010]**

Insert	anchoring prohibited limit, between	34° 48'.735 S	138° 20'.204 E
		34° 47'.767 S	138° 22'.302 E
		34° 47'.577 S	138° 26'.638 E
		34° 47'.427 S	138° 26'.638 E
		34° 46'.597 S	138° 21'.559 E
		34° 46'.595 S	138° 20'.208 E
		34° 48'.735 S	138° 20'.204 E
Delete	anchoring prohibited limit, centred on	34° 47'.2 S	138° 22'.0 E

**Aus 345 [426/2010]**

Insert	anchoring prohibited limit, between	34° 48'.74 S	138° 20'.20 E
		34° 47'.77 S	138° 22'.30 E
		34° 47'.58 S	138° 26'.64 E
		34° 47'.43 S	138° 26'.64 E
		34° 46'.60 S	138° 21'.56 E
		34° 46'.60 S	138° 20'.21 E
		34° 48'.74 S	138° 20'.20 E
Delete	anchoring prohibited limit, centred on	34° 47'.2 S	138° 22'.0 E

**Aus 780 [1110/2009]**

Insert	anchoring prohibited limit, between	34° 48'.84 S	138° 20'.26 E
		34° 47'.87 S	138° 22'.36 E
		34° 47'.68 S	138° 26'.70 E
		34° 47'.53 S	138° 26'.70 E
		34° 46'.70 S	138° 21'.62 E
		34° 46'.70 S	138° 20'.27 E
		34° 48'.84 S	138° 20'.26 E
Delete	anchoring prohibited limit, centred on	34° 47'.2 S	138° 22'.0 E

**Aus 781 [367/2010]**

Insert	anchoring prohibited limit, between	34° 48'.83 S	138° 20'.12 E
		34° 47'.86 S	138° 22'.22 E
		34° 47'.67 S	138° 26'.56 E
		34° 47'.52 S	138° 26'.56 E
		34° 46'.69 S	138° 21'.48 E
		34° 46'.69 S	138° 20'.13 E
		34° 48'.83 S	138° 20'.12 E
Delete	anchoring prohibited limit, centred on	34° 47'.2 S	138° 22'.0 E

7 May 2010

**490\* AUSTRALIA - SOUTH AUSTRALIA - Adelaide - Prohibited anchorage area; infrastructure (continued)****Aus 781 (plan, Approaches to Port Adelaide)**

Insert	anchoring prohibited limit, between	34° 48'.83 S	138° 20'.12 E
		34° 47'.86 S	138° 22'.22 E
		34° 47'.67 S	138° 26'.56 E
		34° 47'.52 S	138° 26'.56 E
		34° 46'.69 S	138° 21'.48 E
		34° 46'.69 S	138° 20'.13 E
		34° 48'.83 S	138° 20'.12 E

Delete	anchoring prohibited limit, centred on	34° 47'.2 S	138° 22'.0 E
--------	--	-------------	--------------

**491\* AUSTRALIA - SOUTH AUSTRALIA - Rivoli Bay - Contours**

Australian Hydrographic Service (AA464995)

**Aus 127 (plan, Rivoli Bay) [609/2009]**

Insert	contour to semi enclose depth, 6 <sub>5</sub> m, to N	37° 34'.2 S	140° 05'.9 E
	contour to semi enclose depth, 5 <sub>8</sub> m, to SW	37° 34'.6 S	140° 05'.6 E

**492\* AUSTRALIA - TASMANIA - Grassy Harbour - Contour**

Australian Hydrographic Service (AA455546)

**Aus 178 (plan, Approaches to Grassy Harbour) [119/2010]**

Insert	broken contour to enclose depth, 30m	40° 03'.62 S	144° 08'.23 E
--------	--------------------------------------	--------------	---------------

**493\* AUSTRALIA - TASMANIA - Low Rocky Point - Light altered**

Auscoast Warning 100/2010 (AA467315), Australian Maritime Safety Authority ATH 1/2010 (AA467316)

**Aus 422 [44/2010]**

Amend	light range to 13M	42° 59'.0 S	145° 30'.1 E
-------	--------------------	-------------	--------------

**Aus 792 [1429/2009]**

Amend	light range to 13M	42° 59'.0 S	145° 30'.1 E
-------	--------------------	-------------	--------------

**Aus 793 [1429/2009]**

Amend	light range to 13M	42° 59'.0 S	145° 30'.1 E
-------	--------------------	-------------	--------------

**494\* AUSTRALIA - TASMANIA - Recherche Bay - Shag Rock - Beacon established**  
Marine and Safety Tasmania Notice M54/2010 (AA467313, AA467547, AA467511, AA469409)

**Aus 173** [212/2010]

Insert beacon, with port lateral topmark 43° 32'.46 S 146° 54'.11 E

Delete rock 43° 32'.45 S 146° 54'.17 E

**Aus 174 (plan, Recherche Bay)** [308/2010]

Insert beacon, with port lateral topmark 43° 32'.458 S 146° 54'.112 E

Delete rock 43° 32'.45 S 146° 54'.17 E

**Aus 794** [1429/2009]

Insert beacon, with port lateral topmark 43° 32'.46 S 146° 54'.11 E

Delete rock 43° 32'.5 S 146° 54'.2 E

**Aus 795** [831/2009]

Insert beacon, with port lateral topmark 43° 32'.46 S 146° 54'.11 E

Delete rock 43° 32'.50 S 146° 54'.15 E

**495\* AUSTRALIA - TASMANIA - Freycinet Peninsula - Contour eastwards**

Australian Hydrographic Service (AA455278)

**Aus 766** [1062/2009]

Insert contour, between 42° 13'.13 S 148° 35'.96 E

42° 13'.27 S 148° 35'.98 E

**496\* AUSTRALIA - TASMANIA - Outer Sister Island - Contour northeastwards**

Australian Hydrographic Service (AA464993)

**Aus 800** [430/2010]

Insert broken contour to enclose depth, 48m 39° 28'.93 S 148° 34'.78 E

**497\* AUSTRALIA - VICTORIA - Geelong - Corio Quay - Light established**

Former Notice - 582(T)/2009 is cancelled

Victorian Notice 40/2010 (AA468379)

**Aus 153** [166/2010]

Insert light, F.R 38° 06'.329 S 144° 22'.155 E

**Aus 157** [166/2010]

Insert light, F.R 38° 06'.329 S 144° 22'.155 E

**498\* PACIFIC OCEAN - Solomon Islands - Vonavona Island - Contours**

Australian Hydrographic Service (AA467509)

**Aus 4622 (INT 622)** [433/2010]

Insert accompanying block 8° 15'.0 S 156° 43'.0 E

**499(T)/2010 AUSTRALIA - NEW SOUTH WALES - Jervis Bay - Scientific instruments recovered**

Former Notice - 48(T)/2010 is cancelled  
Geoscience Australia (AA446305)

Cancel this notice on receipt.

**Chart formerly affected - Aus 193 - Aus 807 - Aus 808 - AX 0808E - AX 60193 - AX 67192 - AX 70193 - AU436150 - AU5XX193**

**500(T)/2010 AUSTRALIA - NEW SOUTH WALES - Newcastle - Hunter River - South Arm - Harbour works; dredging operations completed**

Former Notice - 773(T)/2009 is cancelled  
Thiess Services Pty Ltd (AA468410)

Cancel this notice on receipt.

**Chart formerly affected - Aus 207 - Aus 208 - AU5XX208**

**501(T)/2010 AUSTRALIA - QUEENSLAND - Moreton Bay - Ship to ship transfer completed**

Former Notice - 124(T)/2010 is cancelled  
Maritime Safety Queensland Notice 59(T)/2010 (AA451723)

Cancel this notice on receipt.

**Chart formerly affected - Aus 236 - AU428153**

**502(T)/2010 AUSTRALIA - QUEENSLAND - Brisbane River - Quarantine Flats Reach - Harbour works**

Date - Until 6 July 2010  
Maritime Safety Queensland Notices 378(T)/2010, 395(T)/2010 (AA468638, AA468585)

Dredging and piling operations associated with the construction of the BP Fuel Oil Barge Wharf are in progress (27° 25'.2 S 153° 08'.3 E).

The dredger *Ken Harvey*, barge *Leanora* and support vessels *Alan - M* and *Seahorse* are onsite and will display appropriate lights and shapes. The barge has deployed anchors marked by special light buoys and will monitor VHF Ch 12.

Mariners are advised to navigate with caution in the area.

**Chart temporarily affected - Aus 237 - Aus 238 - AU5237X8**

**503(T)/2010 AUSTRALIA - QUEENSLAND - Moreton Bay - Redcliffe - Scientific instrument southeastwards**

Maritime Safety Queensland Notice 389(T)/2010 (AA468623)

A special light buoy, *Fl.Y.3s*, exists in position 27° 14'.84 S 153° 12'.03 E.

**Chart temporarily affected - Aus 236 - AU428153**

**504(T)/2010 AUSTRALIA - QUEENSLAND - Moreton Bay - Pumicestone Channel - Bellara - Wreck**

Maritime Safety Queensland Notice 388(T)/2010 (AA468621)

A wreck marked by a special light buoy, *Fl.Y.2.5s*, exists in position 27° 03'.68 S 153° 08'.35 E.

Mariners are advised to navigate with caution in the area.

**Chart temporarily affected - Aus 235 - Aus 236 - AU428153**

**505(T)/2010 AUSTRALIA - QUEENSLAND - Arkwright Point - Scientific instrument***Former Notice* - 1187(T)/2009 is cancelled

Maritime Safety Queensland Notice 391(T)/2010 (AA468618)

A special light buoy, *Fl(5)Y.20s*, exists in position 26° 33'.88 S 153° 10'.88 E (WGS84 datum).

Mariners are not to use the buoy as a mooring.

**Chart temporarily affected - Aus 365 - AU427153****506(T)/2010 AUSTRALIA - QUEENSLAND - Gladstone - South Channel - Golding Cutting - Obstruction removed***Former Notice* - 1446(T)/2009 is cancelled

Maritime Safety Queensland Notice 367(T)/2010 (AA468784)

Cancel this notice on receipt.

**Chart formerly affected - Aus 246 - AU424151****507(T)/2010 AUSTRALIA - QUEENSLAND - Shoalwater Bay - Live firing completed***Former Notice* - 378(T)/2010 is cancelled

Maritime Safety Queensland Notice 236(T)/2010 (AA461374)

Cancel this notice on receipt.

**Chart formerly affected - Aus 367 - Aus 822 – AX 0367E – AX 0822E - AU423150****508(T)/2010 AUSTRALIA - QUEENSLAND - Shoalwater Bay - Live firing***Former Notice* - 441(T)/2010 is cancelled*Date* - Until 17 May 2010

Maritime Safety Queensland Notice 381(T)/2010 (AA468646)

Live firing activities will be conducted in the Shoalwater Bay training area during the period 26 April to 16 May 2010.

A marine danger area extends to all waters within a 3M radius of position 22° 23'.0 S 150° 30'.3 E.

All waters, creeks, beaches and other areas within the declared marine danger area are not available for access.

**Chart temporarily affected - Aus 260 - Aus 367 - Aus 822 – AX 0260E – AX 0367E – AX 0822E – AX 60260 - AU423150****509(T)/2010 AUSTRALIA - QUEENSLAND - Shoalwater Bay - Live firing***Date* - Until 24 May 2010

Maritime Safety Queensland Notice 365(T)/2010 (AA468819)

Live firing activities will be conducted in the Shoalwater Bay training area during the period 12 to 23 May 2010.

A marine danger area extends to all waters south of the line defined by the following positions:

22° 23'.84 S 150° 18'.02 E

22° 27'.02 S 150° 34'.98 E.

All waters, creeks, beaches and other areas within the declared marine danger area are not available for access.

**Chart temporarily affected - Aus 260 - Aus 261 - Aus 367 - Aus 822 – AX 0260E – AX 0367E – AX 0822E – AX 60260 – AX 67261 - AU423150 - AU5261P2**

**510(T)/2010 AUSTRALIA - QUEENSLAND - Hay Point - Harbour works completed**

*Former Notice* - 379(T)/2010 is cancelled  
Maritime Safety Queensland Notice 283(T)/2010 (AA463869)

Cancel this notice on receipt.

**Chart formerly affected - Aus 249 - Aus 250 – AX 0249E - AU5250P2**

**511(T)/2010 AUSTRALIA - QUEENSLAND - Whitsunday Group - Shaw Island - Platypus Rock - Light beacon destroyed**

Maritime Safety Queensland Notice 400(T)/2010 (AA468575)

The west cardinal light beacon (20° 31'.23 S 149° 02'.31 E) has been destroyed.

**Chart temporarily affected - Aus 252 - Aus 254 - Aus 824 - AU421119 - AU5254P1**

**512(T)/2010 AUSTRALIA - QUEENSLAND - Hook Island - Nara Inlet - Light beacon destroyed**

*Former Notice* - 324(T)/2010 is cancelled  
Maritime Safety Queensland Notice 387(T)/2010 (AA468659)

The light beacon, *Fl.R.2.5s* (20° 09'.81 S 148° 54'.04 E), has been destroyed; a port lateral light buoy, *Fl.R.2.5s*, exists in situ.

**Chart temporarily affected - Aus 252 - AU421148**

**513(T)/2010 AUSTRALIA - QUEENSLAND - Airlie Beach - Abel Point - Light beacon relit**

*Former Notice* - 450(T)/2010 is cancelled  
Maritime safety Queensland Notice 399/2010 (AA468584)

Cancel this notice on receipt.

**Chart formerly affected - Aus 253 - Aus 268 - AU5268P2**

**514(T)/2010 AUSTRALIA - QUEENSLAND - Cairns - Trinity Inlet - Harbour works**

*Former Notice* - 136(T)/2010 is cancelled  
Maritime Safety Queensland Notice 34(T)/2010 (AA451274)

Cancel this notice on receipt.

**Chart formerly affected - Aus 263 - AU5262X4**

**515(T)/2010 AUSTRALIA - CORAL SEA - Mellish Reef - Light buoy off station northwestwards**

*Former Notice* - 454(T)/2010 is cancelled  
Australia n Bureau of Meteorology (AA469329)

The light buoy, *Fl.Y.3s* (15° 48'.0 S 158° 31'.0 E), is drifting and currently in position 13° 53'.08 S 154° 04'.37 E (4 May 2010).

**Chart temporarily affected - Aus 4604 (INT 604) – AX 4604F - AU130150**

**516(P)/2010 AUSTRALIA - TORRES STRAIT - Varzin Passage - Light buoy to be established**

*Date* - On or about 19 June 2010  
Australia n Maritime Safety Authority Preliminary ATH 2/2010 (AA467441)

A special spherical light buoy, *Fl(5)Y.20s*, without topmark will be established in position 10° 31'.2 S 141° 56'.8 E (WGS84 datum).

**Chart which will be affected - Aus 289 - Aus 296 - AU411141**

**517(T)/2010 AUSTRALIA - WESTERN AUSTRALIA - Dampier - Back fill operations completed**

*Former Notice* - 230(T)/2010 is cancelled  
Dampier Port Authority Notice 13/2010 (AA468672)

Cancel this notice on receipt.

**Chart formerly affected - Aus 57 - Aus 58 - Aus 59 - Aus 741 - Aus 742 - AU421116 - AU5XXX58**

**518(T)/2010 AUSTRALIA - WESTERN AUSTRALIA - Rankin Bank to Dampier - Scientific instruments recovered**

*Former Notice* - 332(T)/2010 is cancelled  
MetOcean Engineers (AA469346)

Cancel this notice on receipt.

**Chart formerly affected - Aus 57 - Aus 58 - Aus 59 - Aus 327 - Aus 328 - Aus 741 - Aus 742 - AU421115 - AU421116 - AU5XXX58**

**519(T)/2010 AUSTRALIA - WESTERN AUSTRALIA - Dampier - Rock laying operations northwestward completed**

*Former Notice* - 333(T)/2010 is cancelled  
Apache Energy Ltd (AA461090)

Cancel this notice on receipt.

**Chart formerly affected - Aus 327 - Aus 741 - Aus 742 - AU421116**

**520(T)/2010 AUSTRALIA - WESTERN AUSTRALIA - Dampier - Seismic survey northwestwards**

*Date* - Until 31 July 2010  
Fugro (AA468833 - AA468835)

MV *Geo Atlantic* with a 7000m towed array is conducting a survey in the area bounded by the following positions:

18° 15'.92 S 114° 35'.73 E  
17° 21'.14 S 115° 51'.83 E  
17° 41'.40 S 116° 07'.86 E  
18° 36'.34 S 114° 51'.74 E.

**Chart temporarily affected - Aus 414 - Aus 415 - Aus 4603 (INT 603) - Aus 4708 (INT 708) - AX 0415F - AX 4603F - AX 4708F - AU130090**

**521(T)/2010 AUSTRALIA - WESTERN AUSTRALIA - Barrow Island - Seismic survey completed**

*Former Notice* - 459(T)/2010 is cancelled  
Cal Dive International (Australia) Pty Ltd (AA466305)

Cancel this notice on receipt.

**Chart formerly affected - Aus 742 - AU421115**

**522(T)/2010 AUSTRALIA - WESTERN AUSTRALIA - Exmouth Plateau - Seismic survey**

*Former Notice* - 231(T)/2010 is cancelled  
RPS Australia and South East Asia (AA450399)

Cancel this notice on receipt.

**Chart formerly affected - Aus 415 - Aus 4708 (INT 708) - AX 0415F - AX 4708F - AU130090**

**523(T)/2010 AUSTRALIA - WESTERN AUSTRALIA - Exmouth Plateau to Onslow - Seismic survey***Date* - Until 30 April 2011

Department of Transport Notice 53B/2010 (AA468756)

MV *Southern Supporter* and *Markab* are conducting a survey in the area bounded by the following positions (WGS84 datum):

21° 26'.13 S 114° 57'.85 E  
 19° 54'.15 S 112° 53'.85 E  
 19° 26'.41 S 113° 19'.08 E  
 20° 42'.10 S 115° 19'.25 E  
 21° 11'.01 S 115° 32'.00 E.

**Chart temporarily affected - Aus 64 - Aus 327 - Aus 328 - Aus 329 - Aus 415 - Aus 416 - Aus 742 - Aus 743 - Aus 744 - Aus 4603 (INT 603) - Aus 4708 (INT 708) - AX 0415F - AX 4603F - AX 4708F - AU130090 - AU320114 - AU321114 - AU422114 - AU422115**

**524(T)/2010 AUSTRALIA - WESTERN AUSTRALIA - Mullaloo to Warnbro Sound - Scientific instruments***Former Notice* - 461(T)/2010 is cancelled

Department of Transport WA (AA465142)

Special light buoys, *Fl. Y. 5s*, exist in positions:

31° 45'.85 S 115° 43'.29 E	31° 47'.37 S 115° 42'.39 E
31° 47'.89 S 115° 41'.75 E	31° 52'.11 S 115° 42'.81 E
31° 52'.52 S 115° 43'.46 E	31° 53'.14 S 115° 43'.78 E
31° 53'.58 S 115° 44'.25 E	31° 53'.88 S 115° 44'.90 E
31° 55'.73 S 115° 44'.85 E	31° 56'.33 S 115° 44'.84 E
31° 58'.67 S 115° 44'.79 E	31° 59'.26 S 115° 44'.65 E
31° 59'.76 S 115° 44'.59 E	32° 01'.39 S 115° 43'.78 E
32° 01'.58 S 115° 44'.62 E	32° 01'.45 S 115° 34'.29 E
32° 04'.79 S 115° 37'.42 E	32° 05'.69 S 115° 37'.54 E
32° 08'.65 S 115° 38'.57 E	32° 20'.97 S 115° 44'.00 E.

Mariners are not to use these buoys as moorings.

**Chart temporarily affected - Aus 112 - Aus 116 - Aus 117 - Aus 334 - Aus 754 - Aus 755 - AX 0334E - AX 0754E - AX 0755E - AX 63112 - AX 66002 - AX 70117 - AU432115 - AU433115**

**525(T)/2010 AUSTRALIA - SOUTH AUSTRALIA - Wallaroo Bay - Wreck**

Department of Transport, Energy and Infrastructure SA Notice 19/2010 (AA468763)

A wreck marked by an isolated danger buoy exists in position 33° 54'.71 S 137° 36'.23 E.

Mariners are advised to navigate with caution in the area.

**Chart temporarily affected - Aus 777 - AU5777P1****526(P)/2010 AUSTRALIA - VICTORIA - Cape Nelson - Light to be altered***Date* - On or about 15 June 2010

Australia n Maritime Safety Authority Preliminary ATH 3/2010 (AA467442)

The range of light K2136 (38° 25'.87 S 141° 32'.60 E (WGS84 datum)) will be altered to 20M.

**Chart which will be affected - Aus 140 - Aus 348 - Aus 349 - AU439141****527(T)/2010 AUSTRALIA - TASMANIA - Storm Bay - Scientific instruments recovered***Former Notice* - 279(T)/2010 is cancelled

Marine and Safety Tasmania Notice M31/2010 (AA459213)

Cancel this notice on receipt.

**Chart formerly affected - Aus 796 - AU444147**

7 May 2010

**528(T)/2010 AUSTRALIA - TASMANIA - Huon River - Butts Reef - Light beacon destroyed***Former Notice - 466(T)/2010 is cancelled*

Marine and Safety Tasmania Notice M55/2010 (AA468777)

The isolated danger light beacon (43° 16'.45 S 147° 07'.54 E) has been destroyed; a special buoy exists in situ.

Mariners are advised to navigate with caution in the area.

**Chart temporarily affected - Aus 173 - Aus 795 - AU444147**

**529(T)/2010 AUSTRALIA - TASMANIA - Frederick Henry Bay - Whale Rock - Light beacon destroyed***Marine and Safety Tasmania M56/2010 (AA468779)*

The isolated danger light beacon (42° 52'.77 S 147° 35'.88 E) has been destroyed.

Mariners are advised to navigate with caution in the area.

**Chart temporarily affected - Aus 171 - Aus 796 - AU443147**

**530(T)/2010 AUSTRALIA - VICTORIA - Edithvale - Buoy off station***Victorian Notice 39(T)/2010 (AA468764)*

No2 special buoy (38° 03'.08 S 145° 04'.54 E) is off station

**Chart temporarily affected - Aus 143 - Aus 155 - AU439145**

**531(T)/2010 AUSTRALIA - VICTORIA - Port Phillip - Port Melbourne - River Yarra - Harbour works***Former Notice - 1036(T)/2009 is cancelled**Date - Until 17 December 2010**Victorian Notice 41(T)/2010 (AA468787)*

Works are in progress at West Gate Bridge (37° 49'.77 S 144° 53'.89 E) resulting in a reduction in the permissible air draught of transiting vessels.

The following restrictions apply from 24 May to 17 December 2010 between 0600 and 1400. Vessels with air draught greater than 47.5m are not permitted to transit. Vessels with air draught 43.5m to 47.5m are permitted to transit subject to evacuation of all personnel from the gantry or platforms. Vessels with air draught 39.5m to 43.5m no restrictions apply, however notice is to be provided to construction crew for vessels transiting the West Gate Bridge.

The following restrictions apply from 24 May to 17 December 2010 between 2030 and 0600. Vessels with air draught greater than 43.5m are permitted to transit subject to evacuation of all personnel from the gantry or platforms. Vessels with air draught 39.5m to 43.5m no restrictions apply, however notice is to be provided to construction crew for vessels transiting the West Gate Bridge.

Incoming vessels with air draught greater than 39.5m to 43.5m report to Melbourne VTS on passing breakwater pier and departing vessels report to Melbourne VTS on departing from berths upstream of the West Gate Bridge. Incoming vessels with air draught 43.5m to 47.5m report to Melbourne VTS 30 minutes prior to arrival Fawkner beacon and departing vessels report to Melbourne VTS 30 minutes prior to departing from berths upstream of the West Gate Bridge. Incoming vessels with air draught greater than 47.5m between 2030 and 0600 report to Melbourne VTS 60 minutes prior to arrival Fawkner beacon and departing vessels report to Melbourne VTS 60 minutes prior to departing from berths upstream of the West Gate Bridge. Melbourne VTS will relay the notice to the West Gate Bridge gantry master.

**Chart temporarily affected - Aus 154 - AU5XX154**

**532(T)/2010 AUSTRALIA - BASS STRAIT - Seismic survey completed***Former Notice - 188(T)/2010 is cancelled**Environment Resource Group Pty Ltd (AA453254)*

Cancel this notice on receipt.

**Chart formerly affected - Aus 357A - Aus 487 - Aus 800 - Aus 802 - AU439146 - AU439147 - AU439148 - AU440147 - AU440148**

## HYDROGRAPHIC REPORTS

<i>Locality</i>	<i>Report</i>	<i>Ship/Authority</i>	<i>Observer</i>
NT- Darwin	Harbour works		Z Jayaswal

**NAVIGATION WARNINGS**

The following radio messages have been received during the period to 7 May 2010. Signal copies of these messages may be destroyed. It is recommended that the reprint of Navigational Warnings should be kept in a file or a book divided into areas. Cancellation should be made on receipt of signals and reprints.

Rigs on location other than those listed in the latest Section III summary are the subject of Radio Navigational Warnings. Rigs in transit will not be the subject of Warnings.

**AUSCOAST WARNING**

- 101 Cancelled.
- 102 Cancelled.
- 103 Drill rig *Ocean Shield* in position 19° 43'·0 S 116° 41'·0 E. 2.5M clearance requested.
- 104 Cancelled.
- 105 Drill rig *Nan Hai 6* in position 21° 28'·9 S 113° 59'·3 E. 2.5M clearance requested.
- 106 Drill rig *Ensco 7500* in position 20° 23'·1 S 116° 22'·1 E. 2.5M clearance requested.
- 107 Exmouth DGPS station ALRS Vol(2) in position 21° 53'·06 S 114° 08'·04 E temporarily discontinued.

**NAVAREA X WARNINGS**

Nil.

**Navigational warnings in force as at 070001UTC MAY 10.****Auscoast**

2010 053 070 077 080 081 092 093 097 098 100 103 105 106 107

**Navarea X**

005

**Summary of mobile drilling rigs as at 070001UTC MAY 10.**

<i>Name</i>	<i>Position</i>
Ocean Patriot	38° 10'·86 S 148° 35'·58 E
Songa Venus	13° 40'·53 S 123° 21'·31 E
Transocean Legend	13° 41'·53 S 122° 11'·29 E
Maersk Discoverer	19° 01'·34 S 114° 33'·25 E
Ocean Shield	19° 43'·00 S 116° 41'·00 E
Jack Bates	20° 04'·24 S 113° 46'·46 E
Ensco 7500	20° 23'·10 S 116° 22'·10 E
Atwood Eagle	20° 37'·83 S 114° 28'·78 E
Nan Hai 6	21° 28'·90 S 113° 59'·30 E
Ocean Epoch	21° 32'·30 S 114° 05'·60 E

**NAVAREA XIV WARNINGS**

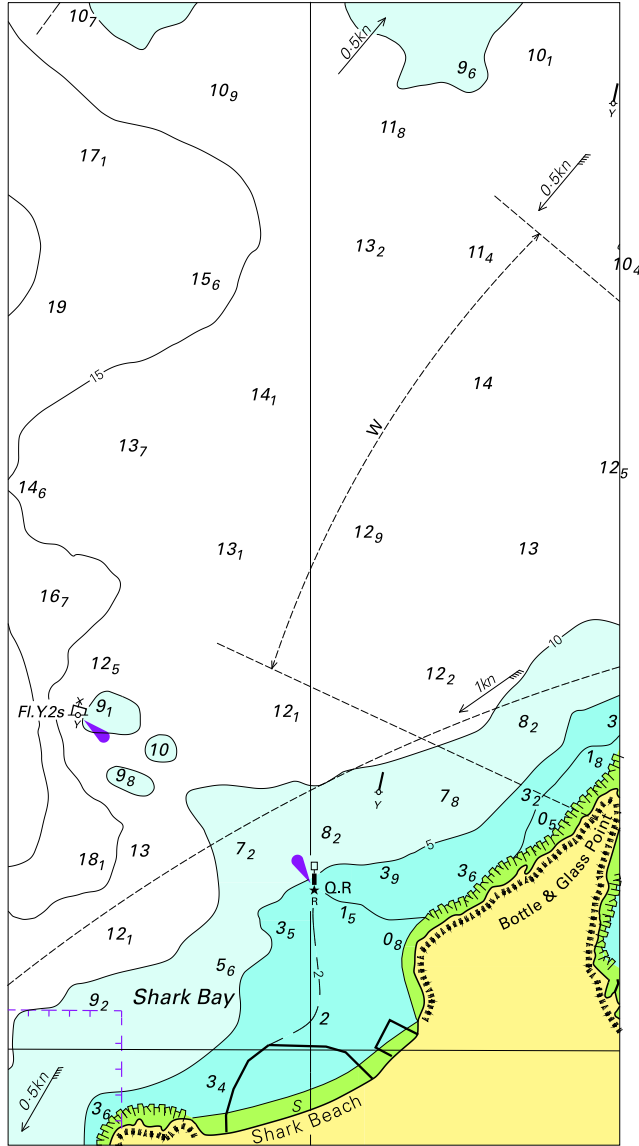
- 015 Cancelled.

**Navarea XIV warnings in force as at 070001UTC MAY 10.**

2009 059

2010 007 014

To accompany Austrlain Notice to Mariners 471/2010

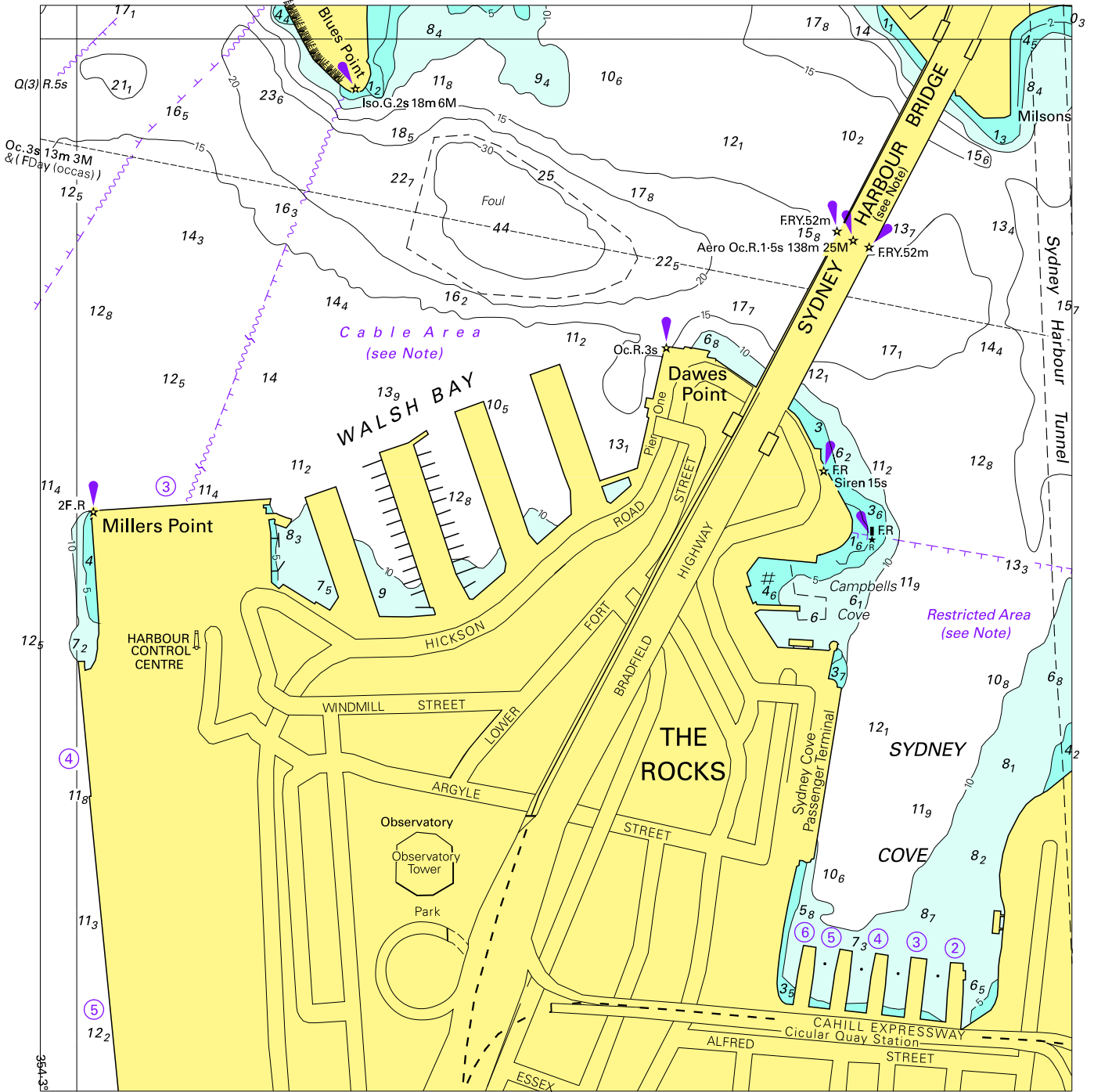


© Commonwealth of Australia 2010

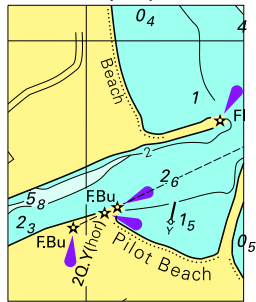
Block for chart Aus 201

(80.9 x 151.1mm)

To accompany Australian Notice to Mariners 472/2010

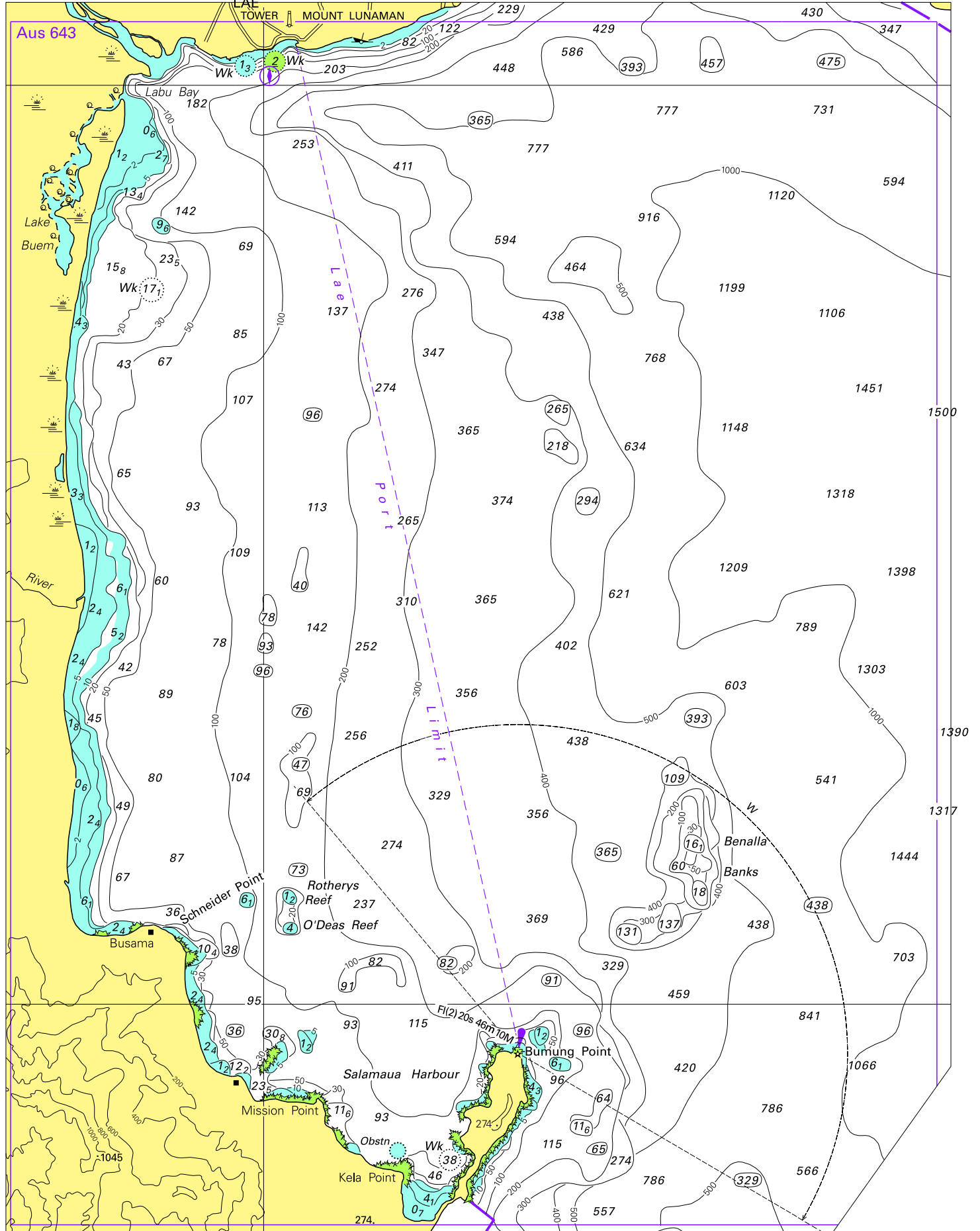


To accompany Australian Notice to Mariners 473/2010



© Commonwealth of Australia 2010  
**Block for chart Aus 219**  
(31.2 x 39.1mm)

To accompany Australian Notice to Mariners 477/2010

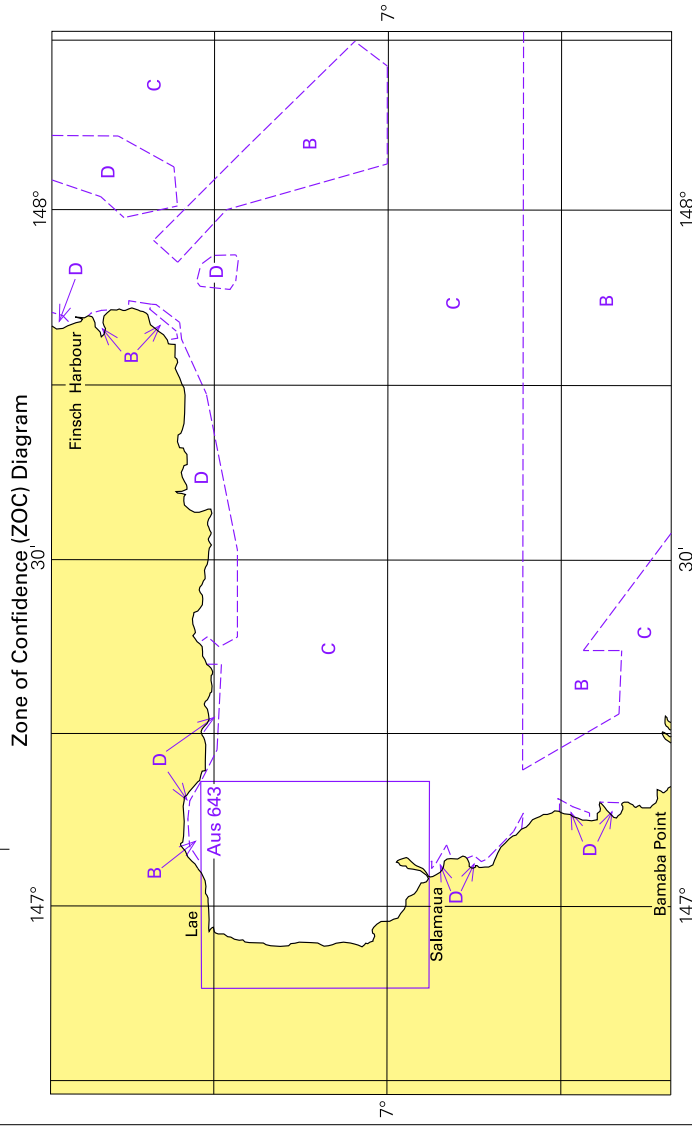


Block for chart Aus 523

© Commonwealth of Australia 2010

(188-9 x 245-9mm)

To accompany Australian Notice to Mariners 477/2010



**ZOC CATEGORIES**  
(For details see Australian Seafarers Handbook, AHP 20)

ZOC	POSITION ACCURACY	DEPTH ACCURACY	SEAFLOOR COVERAGE
A1	±5m	±0.50m + 1% d	All significant seafloor features detected
A2	±20m	±1.00m + 2% d	All significant seafloor features detected
B	±50m	±1.00m + 2% d	Uncharted features hazardous to surface navigation are not expected but may exist
C	±500m	±2.00m + 5% d	Depth anomalies may be expected
D	Worse than ZOC C	Worse than ZOC C	Large depth anomalies may be expected
U	Unassessed - The quality of the bathymetric data has yet to be assessed		

**HUON PENINSULA**

Mount Ulamoa 618

Busiga

Block for chart Aus 523

© Commonwealth of Australia 2010

(248.1 x 114.1mm)

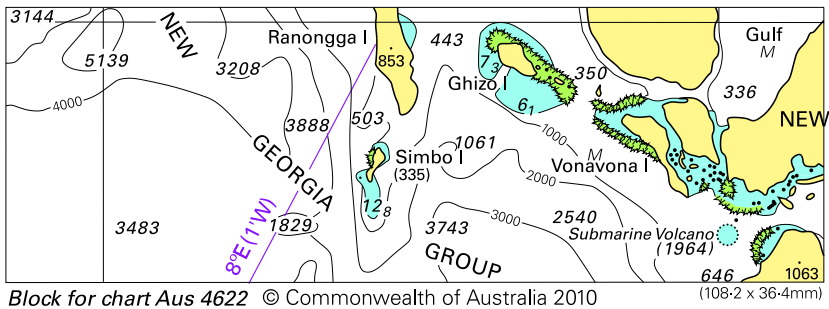


To accompany Australian Notice to Mariners 490/2010



© Commonwealth of Australia 2010  
Block for chart Aus 130 (67.9 x 64.0mm)

To accompany Australian Notice to Mariners 498/2010



Block for chart Aus 4622 © Commonwealth of Australia 2010

(108.2 x 36.4mm)