



23 April 2010

Edition 8

Australian Notices to Mariners are the authority for correcting Australian Charts and Publications

AUSTRALIAN NOTICES TO MARINERS

Notices 402 – 468 

Published fortnightly by the Australian Hydrographic Service

Commodore R. NAIRN RAN
Hydrographer of Australia

SECTIONS.

- I. **Australian Notices to Mariners, including blocks and notes.**
- II. **Hydrographic Reports.**
- III. **Navigational Warnings.**

SUPPLEMENTS.

- I. **Tracings**
- II. **Cumulative List of Australian Notices to Mariners.**
- III. **Temporary and Preliminary Notices in force.**
- IV. **Amendments to Admiralty List of Lights and Fog Signals (Vol K),
Radio Signals (NP 281(2), 282, 283(2), 285, 286(4)) and Sailing
Directions (NP 9, 13, 14, 15, 33, 34, 35, 36, 39, 44, 51, 60, 61, 62, 100, 136).**

© Commonwealth of Australia 2010

This work is copyright. Apart from any use permitted under the Copyright Act 1968, no part may be reproduced by any process, adapted, communicated or commercially exploited without prior written permission from The Commonwealth represented by the Australian Hydrographic Service.

IMPORTANT NOTICE

This edition of Notices to Mariners includes all significant information affecting AHS products which the AHS has become aware of since the last edition. All reasonable efforts have been made to ensure the accuracy and completeness of the information, including third party information, on which these updates are based. The AHS regards third parties from which it receives information as reliable, however the AHS cannot verify all such information and errors may therefore exist. The AHS does not accept liability for errors in third party information.

GENERAL INSTRUCTIONS

The substance of these notices should be inserted on the charts affected.

Bearings are referred to the true compass and are reckoned clockwise from North; those relating to lights are given as seen by an observer from seaward. Positions quoted in permanent notices relate to the horizontal datum for the chart(s). When preliminary or temporary notices affect multiple charts, positions will be provided in relation to only one horizontal datum and that datum will be specified. When the multiple charts do not have a common horizontal datum, mariners will be required to adjust the position(s) for those charts not on the specified datum. The range quoted for a light is its nominal range. Depths are with reference to the chart datum of each chart. Heights are above mean high water springs or mean higher high water, as appropriate.

The capital letter (P) or (T) after the number of any notice denotes a preliminary or temporary notice respectively, which are contained separately at the end of the permanent notices. A star (*) adjacent to the number of a notice indicates that the notice is based on original information.

REPORTING OF DANGERS

Mariners are particularly requested to notify the AUSTRALIAN HYDROGRAPHIC SERVICE, Locked Bag 8801 Wollongong, NSW 2500 (Fax 02-4223 6599, e-mail Hydro.NTM@defence.gov.au or, alternatively by filling in and submitting the [Hydrographic Notes](#) forms located on the web site – www.hydro.gov.au), immediately on the discovery of new dangers or suspected dangers to navigation. For changes or defects in aids to navigation notify AusSAR (Fax 02-6230 6868 or email rccaus@amsa.gov.au).

AUTHORISED USE

Copies of Australian notices are available free of charge from the Australian Hydrographic Service (AHS) website (www.hydro.gov.au) and through the eNotices (email) service (www.hydro.gov.au/enotices/enotices.htm).

Individual Notices may be copied for the purpose of inserting Notice substance on official charts and publications. Paper copies may be printed by chart agents and distributed to customers on a cost recovery basis. Participating chart agents are listed on the AHS website as providing a 'Paper Notices to Mariners' service (www.hydro.gov.au/prodserv/distributors/distributors.htm). Copies of the notices may not be sold for profit without prior written agreement.

NUMERICAL INDEX OF NOTICES TO MARINERS

Edition No 8

Notices	Aus Chart, INT Chart, ENC Cell, AHP
402.....	Aus 249, 308, 643, 714, 719, 823, AU319117, 324112, 417123, 419121, 421119, 427113, 5219P2, 5219P3, 5220P3, 5XX679, 5643P1
403.....	Amendment to Australian Notice to Mariners No 2
404.....	Amendment to Australian Notice to Mariners No 22
405.....	Aus 200
406.....	Aus 489, 809, AX 0809E
407.....	Aus 237
408.....	Aus 238
409.....	Aus 236
410.....	Aus 265
411.....	Aus 426, 824, 4620, 4621, INT 620, 621, AX 4620F, 4621F
412.....	Aus 293
413.....	Aus 507, 508
414.....	Aus 545, 554, 680
415.....	Aus 387, 645
416.....	Aus 314, 321, 4603, 4721, 4722, INT 603, 721, 722, AX 0314F, 0321F, 4603F, 4721F, 4722F
417.....	Aus 741
418.....	Aus 63, 743
419.....	Aus 328, 329, 744
420.....	Aus 81
421.....	Aus 112, 113, AX 63112
422.....	Aus 111, 117, AX 70117
423.....	Aus 755
424.....	Aus 4070, 4714, INT 70, 714, AX 4714F
425.....	Aus 758
426.....	Aus 343, 345, AX 0343E
427.....	Aus 134, 776, AX 0776E
428.....	Aus 136, 778
429.....	Aus 347, 348
430.....	Aus 798, 800
431.....	Aus 790
432.....	Aus 144
433.....	Aus 399, 4621, 4622, INT 621, 622, AX 4621F
434(T).....	Aus 194, AU5XX194
435(T).....	Aus 197, 204, 207, 208, 209, 215, 219, 423, 424, 489, 809, 810, AX 0809E, 6031G, AU334152, 433152, 434151, 5809P1, 5809P2, 5XX204, 5XX208
436(T).....	Aus 236, 364, 814, AU428153
437(T).....	Aus 238, AU5237X8
438(T).....	Aus 235
439(T).....	Aus 245, AU5244X5
440(T).....	Aus 366, 367, 820, AX 0367E, 0820E, AU424151
441(T).....	Aus 260, 367, 822, AX 0260E, 0367E, 0822E, 60260, AU423150
442(T).....	Aus 249, 823, AX 0249E, 0823E, AU422149
443(T).....	Aus 249, 250, 823, 824, AX 0249E, 0823E, AU422149, 5250P1
444(T).....	Aus 252, AU5252P1
445(T).....	Aus 252, 824, AU421148
446(T).....	Aus 252, 253, 254, AU421148
447(T).....	Aus 252, AU421148
448(T).....	Aus 252, 253, 268, AU5268P2
449(T).....	Aus 252, 253, 268, AU5268P2
450(T).....	Aus 253, 268, AU5268P2
451(T).....	Aus 825, 826, AU320148
452(T).....	Aus 256, 257, AU420146, 5XX257
453(T).....	Aus 827, 828, AU419146
454(T).....	Aus 4604, INT 604, AX 4604F, AU130150
455(T).....	Aus 314, 319, 4721, 4722, INT 721, 722, AX 0314F, 0319F, AU313124
456(T).....	Aus 415, 4722, INT 722, AX 0415F, 4722F
457(T).....	Aus 741, 742, AU421116
458(T).....	Aus327, 742, 743, AU421116
459(T).....	Aus 742, AU421115
460(T).....	Aus 81
461(T).....	Aus 117, 334, 754, AX 0334E, 0754E, 66002, 70117, AU432115
462(T).....	Aus 112, 113, AX 63112, 5XX113
463(T).....	Aus 112, 113, 114, 117, AX 63112, 70117, AU5111X4, 5XX113
464(T).....	Aus 109, 110, 118, AX 0110E, 0118E, AU5XX109
465(T).....	Aus 173, AU444146
466(T).....	Aus 173, 795, AU444147
467(T).....	Aus 170, 175, AU443147, 5XX175
468(T).....	Aus 150, AU5150P3

NUMERICAL INDEX OF CHARTS AFFECTED

Edition No 8

Aus Chart	Notices	Aus Chart	Notices
Aus 63.....	418	Aus 387	415
Aus 81.....	420, 460(T)	Aus 399	433
Aus 109.....	464(T)	Aus 415	456(T)
Aus 110.....	464(T)	Aus 423	435(T)
Aus 111.....	422	Aus 424	435(T)
Aus 112.....	421, 462(T), 463(T)	Aus 426	411
Aus 113.....	421, 462(T), 463(T)	Aus 489	406, 435(T)
Aus 114.....	463(T)	Aus 507	413
Aus 117.....	422, 461(T), 463(T)	Aus 508	413
Aus 118.....	464(T)	Aus 545	414
Aus 134.....	427	Aus 554	414
Aus 136.....	428	Aus 643	402
Aus 144.....	432	Aus 645	415
Aus 150.....	468(T)	Aus 680	414
Aus 170.....	467(T)	Aus 714	402
Aus 173.....	465(T), 466(T)	Aus 719	402
Aus 175.....	467(T)	Aus 741	417, 457(T)
Aus 194.....	434(T)	Aus 742	457(T), 458(T), 459(T)
Aus 197.....	435(T)	Aus 743	418, 458(T)
Aus 200.....	405	Aus 744	419
Aus 204.....	435(T)	Aus 754	461(T)
Aus 207.....	435(T)	Aus 755	423
Aus 208.....	435(T)	Aus 758	425
Aus 209.....	435(T)	Aus 776	427
Aus 215.....	435(T)	Aus 778	428
Aus 219.....	435(T)	Aus 790	431
Aus 235.....	438(T)	Aus 795	466(T)
Aus 236.....	409, 436(T)	Aus 798	430
Aus 237.....	407	Aus 800	430
Aus 238.....	408, 437(T)	Aus 809	406, 435(T)
Aus 245.....	439(T)	Aus 810	435(T)
Aus 249.....	402, 442(T), 443(T)	Aus 814	436(T)
Aus 250.....	443(T)	Aus 820	440(T)
Aus 252.....	444(T), 445(T), 446(T), 447(T), 448(T), 449(T)	Aus 822	441(T)
Aus 253.....	446(T), 448(T), 449(T), 450(T)	Aus 823	402, 442(T), 443(T)
Aus 254.....	446(T)	Aus 824	411, 443(T), 445(T)
Aus 256.....	452(T)	Aus 825	451(T)
Aus 257.....	452(T)	Aus 826	451(T)
Aus 260.....	441(T)	Aus 827	453(T)
Aus 265.....	410	Aus 828	453(T)
Aus 268.....	448(T), 449(T), 450(T)	Aus 4070	424
Aus 293.....	412	Aus 4603	416
Aus 308.....	402	Aus 4604	454(T)
Aus 314.....	416, 455(T)	Aus 4620	411
Aus 319.....	455(T)	Aus 4621	411, 433
Aus 321.....	416	Aus 4622	433
Aus 327.....	458(T)	Aus 4714	424
Aus 328.....	419	Aus 4721	416, 455(T)
Aus 329.....	419	Aus 4722	416, 455(T), 456(T)
Aus 334.....	461(T)	AX 0110E	464(T)
Aus 343.....	426	AX 0118E	464(T)
Aus 345.....	426	AX 0249E	442(T), 443(T)
Aus 347.....	429	AX 0260E	441(T)
Aus 348.....	429	AX 0314F.....	416, 455(T)
Aus 364.....	436(T)	AX 0319F.....	455(T)
Aus 366.....	440(T)	AX 0321F.....	416
Aus 367.....	440(T), 441(T)	AX 0334E	461(T)
		AX 0343E	426

Aus Chart	Notices	ENC Cell	Notices
AX 0367E	440(T), 441(T)	AU130150.....	454(T)
AX 0415F	456(T)	AU313124.....	455(T)
AX 0754E	461(T)	AU319117.....	402
AX 0776E	427	AU320148.....	451(T)
AX 0809E	406, 435(T)	AU324112.....	402
AX 0820E	440(T)	AU334152.....	435(T)
AX 0822E	441(T)	AU417123.....	402
AX 0823E	442(T), 443(T)	AU419121.....	402
AX 4603F	416	AU419146.....	453(T)
AX 4604F	454(T)	AU420146.....	452(T)
AX 4620F	411	AU421115.....	459(T)
AX 4621F	411, 433	AU421116.....	457(T), 458(T)
AX 4714F	424	AU421119.....	402
AX 4721F	416	AU421148.....	445(T), 446(T), 447(T)
AX 4722F	416, 456(T)	AU422149.....	442(P), 443(T)
AX 60260	441(T)	AU423150.....	441(T)
AX 6031G	435(T)	AU424151.....	440(T)
AX 63112	421, 462(T), 463(T)	AU427113.....	402
AX 66002	461(T)	AU428153.....	436(T)
AX 70117	422, 461(T), 463(T)	AU432115.....	461(T)
		AU433152.....	435(T)
		AU434151.....	435(T)
		AU443147.....	467(T)
		AU444146.....	465(T)
INT Chart	Notices	AU444147.....	466(T)
INT 70	424	AU5XX109.....	464(T)
INT 603	416	AU5111X4.....	463(T)
INT 604	454(T)	AU5XX113.....	462(T), 463(T)
INT 620	411	AU5150P3.....	468(T)
INT 621	411, 433	AU5XX175.....	467(T)
INT 622	433	AU5XX194.....	434(T)
INT 714	424	AU5XX204.....	435(T)
INT 721	416, 455(T)	AU5XX208.....	435(T)
INT 722	416, 455(T), 456(T)	AU5220P3.....	402
		AU5219P2.....	402
		AU5219P3.....	402
		AU5237X8.....	437(T)
		AU5244X5.....	439(T)
		AU5250P1.....	443(T)
		AU5252P1.....	444(T)
		AU5XX257.....	452(T)
		AU5268P2.....	449(T), 450(T)
		AU5643P1.....	402
		AU5XX679.....	402
		AU5809P1.....	435(T)
		AU5809P2.....	435(T)

402 AUSTRALIA - Product

Australian Hydrographic Service (AA458132, AA466890)

New Chart

<i>Chart</i>	<i>Published</i>	<i>Title and description of amendments</i>	<i>Scale</i>	<i>Index Chart</i>	<i>Price</i>
Aus 643	12/3/2010	Papua New Guinea - North East Coast - Approaches to Lae 6° 43'.96 S - 7° 03'.60 S 146° 53'.26 E - 147° 11'.00 E Plan: Port of Lae 6° 43'.90 S - 6° 45'.10 S 146° 58'.14 E - 147° 00'.80 E <i>New chart providing improved coverage of the Port of Lae.</i> <i>Note: Aus 523 and 644 to be updated in edition 9.</i>	1:50 000 1:7 500	Aus 5000	\$35.00

New Edition

<i>Chart</i>	<i>Published</i>	<i>Title and description of amendments</i>	<i>Scale</i>	<i>Index Chart</i>	<i>Price</i>
Aus 249	12/3/2010	Australia - East Coast - Queensland - Hay Point and Mackay 20° 58'.40 S - 21° 26'.30 S 149° 09'.30 E - 149° 56'.30 E <i>New edition updated for new anchorages. Notice 59(T)/2010 refers.</i>	1:75 000	Aus 5000 and 5001	\$35.00
Aus 823	12/3/2010	Australia - East Coast - Queensland - Percy Isles to Mackay 20° 56'.00 S - 21° 51'.60 S 149° 09'.00 E - 150° 43'.00 E <i>New edition updated for new anchorages. Notice 59(T)/2010 refers.</i>	1:150 000	Aus 5000 and 5001	\$35.00

New Electronic Navigation Chart (Seafarer ENC)

<i>Cell Name</i>	<i>Released</i>	<i>Title</i>
AU319117	April 2010	Indian Ocean - Cell 12
AU324112	April 2010	Indian Ocean - Cell 22
AU417123	April 2010	Western Australia - Koolan Island to King Sound
AU419121	April 2010	Western Australia - Cape Gourdon to Cape Jaubert
AU421119	April 2010	Western Australia - De Grey River
AU427113	April 2010	Western Australia - Steep Point and Henri Freycinet Harbour
AU5219P2	April 2010	New South Wales - Camden Haven
AU5219P3	April 2010	New South Wales - Hastings River including Port Macquarie Plan
AU5220P3	April 2010	New South Wales - Coffs Harbour
AU5643P1	April 2010	Papua New Guinea - North East Coast - Port of Lae
AU5XX679	April 2010	Papua New Guinea - New Britain - Duke of York Group

Chart to be permanently withdrawn without replacement

<i>Chart</i>	<i>On publication of new chart</i>	<i>Remarks</i>
Aus 308	Aus 714 and Aus 719	Mid to late 2010

For further details refer to the AHS website at www.hydro.gov.au for new edition and new chart stock arrival information.

When placing orders with a chart agent, mariners should advise whether their order pertains to the current edition or the new edition.

403 AUSTRALIA - Product - Amendment to Australian Notice to Mariners No 2
Australian Hydrographic Service (AA465412)

Page 14

Insert new chart agent:

Compleat Angler and Camping World
81A Dixon Road
Rockingham 6168

Telephone +61 (0)8 9528 5255
Fax +61 (0)8 9528 7885
Email fidhncampingworld@bigpond.com
Website www.compleatangler.com.au

N

404 AUSTRALIA - Product - Amendment to Australian Notice to Mariners No 22
Australian Maritime Safety Authority (AA454265)

Page 103, para 34

Delete entry for Hay Point-Nth (Y2)

405* AUSTRALIA - NEW SOUTH WALES - Port Jackson - Middle Harbour - Seaforth - Depth
Australian Hydrographic Service (AA456495)

Aus 200 [350/2010]

Delete depth, 30m, and enclosing contour 33° 47'.95 S 151° 13'.95 E

406* AUSTRALIA - NEW SOUTH WALES - Port Jackson - Depths northeastwards
PIPE International (Australia) Pty Ltd (AA441586 - AA441588, AA441609)

Aus 489 [100/2010]

Delete depth, 165m, and enclosing contour with legend 33° 43'.5 S 151° 49'.0 E
depth, 3855m, and enclosing contour 33° 15'.5 S 153° 14'.5 E

Aus 809 [285/2010]

Delete depth, 165m, and enclosing contour with legend 33° 43'.5 S 151° 49'.0 E

AX 0809E [285/2010]

Delete depth, 165m, and enclosing contour with legend 33° 43'.5 S 151° 49'.0 E

407* AUSTRALIA - QUEENSLAND - Brisbane River - Lytton Reach - Depth
Australian Hydrographic Service (AA464997)

Aus 237 [30/2010]

Substitute depth, 4₄m, for depth, 4₅m 27° 25'.51 S 153° 08'.04 E

408* AUSTRALIA - QUEENSLAND - Brisbane River - Cameron Rocks - Light beacon altered
Former Notice - 830(T)/2007 is cancelled
Maritime Safety Queensland (AA465191, AA465192)

Aus 238 [105/2010]

Substitute beacon for light beacon 27° 26'.42 S 153° 03'.04 E

Aus 238 (plan, Bulimba Reach)

Substitute beacon for light beacon 27° 26'.42 S 153° 03'.04 E

409* AUSTRALIA - QUEENSLAND - Moreton Bay - Skirmish Point - Light buoy established

Former Notice - 1443(T)/2009 is cancelled

Maritime Safety Queensland Notice 335/2010 (AA465218)

Aus 236 [354/2010]

Insert	port lateral cylindrical light buoy, Q.R, without topmark	27° 06'.49 S	153° 12'.15 E
Delete	light beacon	27° 06'.6 S	153° 12'.0 E

410* AUSTRALIA - QUEENSLAND - Port Alma - Sea Reach - Light buoy

Maritime Safety Queensland (AA465697)

Aus 265 [355/2010]

Amend	light buoy to <i>Fl.R.4s</i>	23° 31'.60 S	150° 56'.59 E
-------	------------------------------	--------------	---------------

411* AUSTRALIA - QUEENSLAND - Hay Point - Radio reporting point; anchorages

Australian Maritime Safety Authority (AA454265)

Aus 426 [151/2010]

Amend	legend to Y3-Y4	21° 12'.5 S	149° 35'.0 E
-------	-----------------	-------------	--------------

Aus 824 [1354/2009]

Insert	accompanying block	21° 02'.0 S	149° 45'.0 E
--------	--------------------	-------------	--------------

Aus 4620 (INT 620) [1265/2009]

Amend	legend to Y3-Y4	21° 13'.0 S	149° 38'.0 E
-------	-----------------	-------------	--------------

Delete	entry, Y2, centred on	21° 15'.0 S	144° 18'.0 E
--------	-----------------------	-------------	--------------

Aus 4621 (INT 621) [151/2010]

Amend	legend to Y3-Y4	21° 14'.0 S	149° 38'.0 E
-------	-----------------	-------------	--------------

AX 4620F [1265/2009]

Amend	legend to Y3-Y4	21° 13'.0 S	149° 38'.0 E
-------	-----------------	-------------	--------------

AX 4621F [151/2010]

Amend	legend to Y3-Y4	21° 14'.0 S	149° 38'.0 E
-------	-----------------	-------------	--------------

412* AUSTRALIA - TORRES STRAIT - Nardana Patches - Light beacon altered

Australian Maritime Safety Authority (AA460615, AA460616)

Aus 293 [359/2010]

Insert	light sector, Red 235° - 122° (247°), emanating from light	10° 30'.37 S	142° 14'.57 E
--------	--	--------------	---------------

Amend	elevation to 9m	10° 30'.37 S	142° 14'.57 E
-------	-----------------	--------------	---------------

413* PAPUA NEW GUINEA - Milne Bay - DepthHMAS *Leeuwin* (AA465129, AA465130)**Aus 507 [360/2009]**Insert depth, 18₈m, and extend contour NE to enclose 10° 20'.13 S 150° 23'.18 EDelete depth, 14 ₁m 10° 20'.1 S 150° 23'.1 E**Aus 508 [251/2010]**Insert depth, 18₈m, and extend contour NE to enclose 10° 20'.13 S 150° 23'.18 EDelete depth, 14 ₁m 10° 20'.1 S 150° 23'.1 E**414* PAPUA NEW GUINEA - Duke of York Group - Depths; ZOC diagrams**

Australian Hydrographic Service (AA451244, AA459692)

Aus 545 [733/2008]

Insert accompanying block 4° 10'.0 S 152° 19'.0 E

Substitute accompanying ZOC diagram 4° 19'.0 S 151° 40'.0 E

Aus 554 [292/2010]

Substitute accompanying ZOC diagram 4° 20'.0 S 152° 52'.0 E

Aus 680 (plan, Simpson and Matupit Harbours) [252/2010]

Substitute accompanying ZOC diagram 4° 12'.2 S 152° 12'.0 E

415* PAPUA NEW GUINEA - Basamuk - Lights established

National Maritime Safety Authority PNG Notice 17/2010 (AA465217)

Aus 387 [1359/2009]Insert light, *Fl.3s 10M* 5° 32'.28 S 146° 08'.27 E**Aus 645 [NC 5/12/2008]**Insert light, *Fl(3)10s 6m 5M* 5° 32'.610 S 146° 08'.552 Elight, *Fl.3s 9m 10M* 5° 32'.276 S 146° 08'.273 E**Aus 645 (plan, Port of Basamuk)**Insert light, *Fl(3)10s 6m 5M* 5° 32'.610 S 146° 08'.552 Elight, *Fl.3s 9m 10M* 5° 32'.276 S 146° 08'.273 E

416* AUSTRALIA - TIMOR SEA - Sahul Banks - Racon; contour
 Australian Hydrographic Service (AA464977, AA464978), UKHO (AA463237)

On certain copies only

Aus 314 [1160/2009]

Insert contour to enclose depth, 60m, to W 11° 16'.3 S 125° 19'.7 E

Amend racon to *Racon (U) (occas)* 11° 55'.5 S 125° 00'.4 E

Aus 321 [648/2009]

Insert contour to enclose depth, 60m, to W 11° 16'.3 S 125° 19'.7 E

Aus 4603 (INT 603) [208/2010]

Amend racon to *Racon (U)* 11° 55'.5 S 125° 00'.4 E

Aus 4721 (INT 721) [254/2010]

Amend racon to *Racon (U)* 11° 55'.5 S 125° 00'.4 E

Aus 4722 (INT 722) [254/2010]

Amend racon to *Racon (U)* 11° 55'.5 S 125° 00'.4 E

AX 0314F [1160/2009]

Insert contour to enclose depth, 60m, to W 11° 16'.3 S 125° 19'.7 E

Amend racon to *Racon (U) (occas)* 11° 55'.5 S 125° 00'.4 E

AX 0321F [648/2009]

Insert contour to enclose depth, 60m, to W 11° 16'.3 S 125° 19'.7 E

AX 4603F [208/2010]

Amend racon to *Racon (U)* 11° 55'.5 S 125° 00'.4 E

AX 4721F [254/2010]

Amend racon to *Racon (U)* 11° 55'.5 S 125° 00'.4 E

AX 4722F [254/2010]

Amend racon to *Racon (U)* 11° 55'.5 S 125° 00'.4 E

417* AUSTRALIA - WESTERN AUSTRALIA - Glomar Shoal - Depths

LADS Flight (DHDB 535161)

Aus 741 [363/2010]

Insert accompanying block 19° 32'.0 S 116° 48'.0 E

418* AUSTRALIA - WESTERN AUSTRALIA - Mary Anne Island - Light altered

Australian Maritime Safety Authority (AA460822, AA460823)

Aus 63 [1362/2009]

Insert light, *Fl.5s 8m 10M* 21° 15'.704 S 115° 27'.823 E

Delete light 21° 15'.70 S 115° 27'.85 E

Aus 743 [300/2010]

Insert light, *Fl.5s 8m 10M* 21° 15'.70 S 115° 27'.82 E

Delete light 21° 15'.7 S 115° 27'.9 E

419* AUSTRALIA - WESTERN AUSTRALIA - Y Island - Light altered; height

Department of Transport WA (AA462493, AA462494)

Aus 328 [300/2010]Amend light to *F(2)5s 10M* 21° 57'.2 S 114° 25'.2 E**Aus 329 [258/2010]**Amend light to *F(2)5s 10M* 21° 57'.2 S 114° 26'.0 E
legend to (29) 21° 57'.2 S 114° 25'.8 E**Aus 744 [301/2010]**Amend light to *F(2)5s 12m 10M* 21° 57'.2 S 114° 25'.3 E
legend to *Y Island (9)* 21° 56'.9 S 114° 26'.0 E**420* AUSTRALIA - WESTERN AUSTRALIA - Geraldton - Light buoys altered; buoys established**

Department of Transport (AA458608, AA458609), Geraldton Port Authority (AA33810 - AA33812, AA464909, AA464910)

Aus 81 [364/2010]Insert starboard lateral pillar light buoy, *F(2)G.5s*, without topmark 28° 44'.69 S 114° 35'.67 EAmend light buoy to *F(2)G.5s* 28° 44'.08 S 114° 35'.53 E
light buoy to *F(2)R.5s* 28° 44'.05 S 114° 35'.68 ESubstitute port lateral pillar light buoy, *F(2)R.5s*, without topmark for light buoy 28° 44'.65 S 114° 35'.81 E

Delete light buoy 28° 44'.62 S 114° 35'.67 E

Aus 81 (plan, Port of Geraldton)Insert special spar buoy, without topmark 28° 46'.348 S 114° 36'.269 E
special spar buoy, without topmark 28° 46'.342 S 114° 36'.361 E
special spar buoy, without topmark 28° 46'.276 S 114° 36'.455 E
special spar buoy, without topmark 28° 46'.115 S 114° 36'.512 E
special spar buoy, without topmark 28° 46'.030 S 114° 36'.380 E
special spar buoy, without topmark 28° 46'.216 S 114° 36'.305 E

Delete depth, 4,m 28° 46'.12 S 114° 36'.51 E

421* AUSTRALIA - WESTERN AUSTRALIA - Fremantle - Light beacons altered

Australian Hydrographic Service (AA332304), Department of Transport WA (AA458608, AA458609)

Aus 112 [1313/2009]

Insert	light beacon, <i>Fl.G.</i> 3s, with starboard lateral topmark	32° 01'.551 S	115° 45'.631 E
	light beacon, <i>Fl.R.</i> 3s, with port lateral topmark	32° 01'.904 S	115° 45'.684 E
Substitute	east cardinal light beacon, <i>Q(3)10s</i> , with topmark for light beacon	32° 01'.45 S	115° 45'.67 E
Delete	beacon	32° 01'.56 S	115° 45'.61 E
	beacon	32° 01'.58 S	115° 45'.63 E
	light beacon	32° 01'.96 S	115° 45'.71 E

Aus 113 [1313/2009]

Insert	light beacon, <i>Fl.R.</i> 3s, with port lateral topmark	32° 01'.904 S	115° 45'.684 E
	light beacon, <i>Fl.R.</i> 3s, without topmark	32° 01'.725 S	115° 45'.568 E
	light beacon, <i>Fl.G.</i> 3s, without topmark	32° 01'.726 S	115° 45'.615 E
Substitute	light beacon, <i>Fl.G.</i> 3s, with starboard lateral topmark for beacon	32° 01'.82 S	115° 45'.73 E
Delete	light beacon	32° 01'.97 S	115° 45'.71 E
	depth, 1 _m	32° 01'.81 S	115° 45'.73 E

AX 63112 [1313/2009]

Insert	light beacon, <i>Fl.G.</i> 3s, with starboard lateral topmark	32° 01'.551 S	115° 45'.631 E
	light beacon, <i>Fl.R.</i> 3s, with port lateral topmark	32° 01'.904 S	115° 45'.684 E
Substitute	east cardinal light beacon, <i>Q(3)10s</i> , with topmark for light beacon	32° 01'.45 S	115° 45'.67 E
Delete	beacon	32° 01'.58 S	115° 45'.63 E
	beacon	32° 01'.56 S	115° 45'.61 E
	light beacon	32° 01'.96 S	115° 45'.71 E

422* AUSTRALIA - WESTERN AUSTRALIA - Garden Island - Naval waters
 Department of Defence (DHDB 1440966)

Aus 111 [162/2010]

Insert	magenta dashed line, between	32° 15'.300 S	115° 42'.349 E
		32° 15'.079 S	115° 42'.420 E
		32° 14'.687 S	115° 42'.159 E
		32° 13'.967 S	115° 42'.666 E
	magenta dashed line, between	32° 15'.300 S	115° 42'.109 E
		32° 15'.109 S	115° 42'.170 E
		32° 14'.817 S	115° 41'.979 E
		32° 15'.089 S	115° 40'.520 E
		32° 14'.326 S	115° 40'.310 E
Delete	magenta dashed line, between	32° 13'.97 S	115° 42'.67 E
		32° 14'.71 S	115° 42'.15 E
		32° 15'.07 S	115° 42'.41 E
		32° 15'.30 S	115° 42'.35 E
	magenta dashed line, between	32° 14'.33 S	115° 40'.31 E
		32° 15'.09 S	115° 40'.53 E
		32° 14'.81 S	115° 41'.96 E
		32° 15'.11 S	115° 42'.16 E
		32° 15'.30 S	115° 42'.11 E

Aus 117 [163/2010]

Insert	magenta dashed line, between	32° 16'.107 S	115° 41'.939 E
	magenta dashed line, between	32° 16'.109 S	115° 41'.958 E
		32° 16'.107 S	115° 42'.009 E
		32° 16'.098 S	115° 41'.984 E
	accompanying block	32° 10'.5 S	115° 41'.0 E
Delete	magenta dashed line, between	32° 16'.11 S	115° 42'.01 E
		32° 16'.38 S	115° 41'.92 E
	magenta legend, Waters	32° 12'.12 S	115° 41'.78 E

AX 70117 [163/2010]

Insert	magenta dashed line, between	32° 16'.107 S	115° 41'.939 E
		32° 16'.109 S	115° 41'.958 E
	magenta dashed line, between	32° 16'.107 S	115° 42'.009 E
		32° 16'.098 S	115° 41'.984 E
	accompanying block	32° 10'.5 S	115° 41'.0 E
Delete	magenta dashed line, between	32° 16'.11 S	115° 42'.01 E
		32° 16'.38 S	115° 41'.92 E
	magenta legend, Waters	32° 12'.12 S	115° 41'.78 E

423* AUSTRALIA - WESTERN AUSTRALIA - Geographe Bay - Light buoys established
 Department of Transport WA (AA458661, AA458663)

Aus 755 [366/2010]

Insert	accompanying block	33° 34'.0 S	115° 15'.0 E
--------	--------------------	-------------	--------------

424 INDIAN OCEAN - Africana II Rise to Broken Ridge - Depths

BA Notice 14/1681/2010 (AA465476)

Aus 4070 (INT 70) [260/2010]

Insert	depth, 331m, enclosed by danger circle	31° 46'.0 S	95° 22'.5 E
	depth, 143m, enclosed by danger circle	45° 54'.5 S	42° 33'.0 E
Delete	depth, 936m	31° 37'.0 S	95° 09'.0 E
	depth, 214m	45° 58'.0 S	42° 10'.0 E

Aus 4714 (INT 714) [260/2010]

Insert	depth, 331m, enclosed by danger circle	31° 46'.0 S	95° 22'.5 E
--------	--	-------------	-------------

AX 4714F [260/2010]

Insert	depth, 331m, enclosed by danger circle	31° 46'.0 S	95° 22'.5 E
--------	--	-------------	-------------

425* AUSTRALIA - WESTERN AUSTRALIA - Clifly Head - Contour southwestwards

Australian Hydrographic Service (AA455624, AA455625)

Aus 758 [309/2009]

Insert	contour, between	35° 19'.86 S	116° 10'.53 E
		35° 20'.53 S	116° 11'.05 E
		35° 20'.32 S	116° 12'.07 E
Delete	contour, between	35° 19'.9 S	116° 10'.5 E
		35° 20'.3 S	116° 12'.1 E

426* AUSTRALIA - SOUTH AUSTRALIA - Port Lincoln - Chart limit

Australian Hydrographic Service (AA464913)

Aus 343 [304/2010]

Insert	magenta limits, with legend <i>Aus 134</i> in SW corner, between	34° 40'.00 S	135° 47'.27 E
		34° 54'.13 S	135° 47'.27 E
		34° 54'.13 S	135° 54'.75 E
		35° 03'.19 S	135° 54'.75 E
		35° 03'.19 S	136° 08'.64 E
		34° 40'.00 S	136° 08'.64 E

Aus 345 [367/2010]

Insert	magenta limits, with legend <i>Aus 134</i> in SW corner, between	34° 54'.06 S	135° 47'.55 E
		34° 54'.06 S	135° 54'.83 E
		35° 03'.12 S	135° 54'.83 E
		35° 03'.12 S	136° 08'.72 E
		34° 35'.17 S	136° 08'.72 E
		34° 35'.17 S	135° 47'.55 E

AX 0343E [304/2010]

Insert	magenta limits, with legend <i>Aus 134</i> in SW corner, between	34° 40'.00 S	135° 47'.27 E
		34° 54'.13 S	135° 47'.27 E
		34° 54'.13 S	135° 54'.75 E
		35° 03'.19 S	135° 54'.75 E
		35° 03'.19 S	136° 08'.64 E
		34° 40'.00 S	136° 08'.64 E

427* AUSTRALIA - SOUTH AUSTRALIA - Port Lincoln - Beacon established; light beacon altered

Australian Hydrographic Service (AA201799), Department for Transport, Energy and Infrastructure SA (AA458702, AA458703)

Aus 134 [100/2008]

Insert	beacon, with port lateral topmark	34° 44'.60 S	135° 53'.36 E
	port lateral light beacon, <i>F.R.3M</i> , with topmark	34° 45'.123 S	135° 53'.874 E

Delete	light beacon	34° 45'.12 S	135° 53'.89 E
--------	--------------	--------------	---------------

Aus 134 (plan, Proper Bay)

Insert	port lateral light beacon, <i>F.R.3M</i> , with topmark	34° 45'.123 S	135° 53'.874 E
--------	---	---------------	----------------

Delete	light beacon	34° 45'.13 S	135° 53'.86 E
--------	--------------	--------------	---------------

Aus 776 [304/2010]

Insert	port lateral light beacon, <i>F.R.3M</i> , with topmark	34° 45'.12 S	135° 53'.87 E
	port lateral light beacon, <i>Fl.R.3s 3M</i> , with topmark	34° 44'.61 S	135° 55'.21 E

Delete	beacon	34° 45'.0 S	135° 54'.0 E
--------	--------	-------------	--------------

AX 0776E [304/2010]

Insert	port lateral light beacon, <i>Fl.R.3s 3M</i> , with topmark	34° 44'.61 S	135° 55'.21 E
	port lateral light beacon, <i>F.R.3M</i> , with topmark	34° 45'.12 S	135° 53'.87 E

Delete	beacon	34° 45'.0 S	135° 54'.0 E
--------	--------	-------------	--------------

428* AUSTRALIA - SOUTH AUSTRALIA - Port Bonython - Light buoy repositioned

Department for Transport, Energy and Infrastructure SA (AA458706 - AA458708)

Aus 136 [68/2009]

Move	light buoy	33° 02'.3 S	137° 45'.9 E
	to	33° 02'.22 S	137° 45'.98 E

Aus 778 [305/2010]

Move	light buoy	33° 02'.3 S	137° 45'.9 E
	to	33° 02'.22 S	137° 45'.98 E

429* AUSTRALIA - SOUTH AUSTRALIA - Murray River to Cape Martin - Contours

Australian Hydrographic Service (AA455275, AA455358)

Aus 347 [609/2009]

Insert	contour to enclose depth, 24m	35° 33'.99 S	138° 53'.06 E
	contour to enclose depth, 14m	37° 26'.27 S	139° 52'.37 E

Aus 348 [265/2010]

Insert	contour to enclose depth, 14m	37° 26'.27 S	139° 52'.37 E
--------	-------------------------------	--------------	---------------

430* AUSTRALIA - TASMANIA - Clarke Island - Seal Point - Contour

Australian Hydrographic Service (AA455405)

Aus 798 [527/2007]

Insert	contour, between	40° 28'.77 S	148° 15'.22 E
		40° 28'.71 S	148° 15'.28 E

Aus 800 [493/2009]

Insert	contour, between	40° 28'.77 S	148° 15'.22 E
		40° 28'.71 S	148° 15'.28 E

431* AUSTRALIA - TASMANIA - Trefoil Island - Niggerhead Rock - Rock
B Wright (AA461473)

Aus 790 [120/2010]

Substitute	rock which does not cover for rock which covers and uncovers	40° 37'.5 S	144° 40'.7 E
------------	--	-------------	--------------

432* AUSTRALIA - VICTORIA - Port Phillip - South Channel - Dredged limit

Australian Hydrographic Service (AA451810)

Aus 144 [215/2010]

Insert	dashed line, between	38° 18'.303 S	144° 43'.732 E
		38° 18'.442 S	144° 44'.400 E
Delete	dashed line, between	38° 18'.30 S	144° 43'.73 E
		38° 18'.45 S	144° 44'.40 E

433* PACIFIC OCEAN - Solomon Islands - New Georgia Island to Onua Island - Light beacon repositioned; light altered

Nawae Construction Ltd (AA447031, AA447041)

Aus 399 [1219/2009]

Insert	light beacon, <i>Fl. 10s 10m 5M</i> , without topmark	7° 04'.42 S	155° 54'.46 E
Delete	light depth, 25m	7° 04'.5 S	155° 54'.4 E
		7° 04'.4 S	155° 54'.8 E

Aus 4621 (INT 621) [411/2010]

Amend	light to <i>Fl.5M</i>	7° 04'.0 S	155° 54'.0 E
-------	-----------------------	------------	--------------

Aus 4622 (INT 622) [32/2010]

Amend	light to <i>Fl.5M</i>	7° 04'.0 S	155° 54'.0 E
	light to <i>Fl(2)10M</i>	7° 58'.0 S	157° 30'.0 E

AX 4621F [411/2010]

Amend	light to <i>Fl.5M</i>	7° 04'.0 S	155° 54'.0 E
-------	-----------------------	------------	--------------

434(T)/2010 AUSTRALIA - NEW SOUTH WALES - Port Kembla - Depth information

Former Notice - 1281(T)/2009 is cancelled

Port Kembla Port Corporation Notice 3/2010 (AA466480, AA466481)

Available depths as at 16 April 2010:

<i>Berth</i>	<i>Metres</i>	<i>Remarks</i>
* Inner Harbour	15.1	
* North West Basin	11.2	
* 101	11.3	
* 102	15.7	
* 103	11.1	
* 104	15.3	
* 105	15.2 (14.8 for vessels overhanging)	
* 106	13.7	
* 107	12.1	
108	-	Future Development
109	11.8	
110	10.7 (9.0)	
* 111	15.4	
* 112	12.8	
113	10.5	
201	10.3	To 250m
* 201	9.3	To 280m
* 201	9.0	To 350m
* 202	10.5	
* 202	10.4	
* 202	10.2	
* 203	9.6	
* 204	4.2	
* 205	6.8	
* 206	11.1	

* Indicates new or revised entry.

Chart temporarily affected - Aus 194 - AU5XX194**435(T)/2010 AUSTRALIA - NEW SOUTH WALES - Newcastle - Seismic survey**

RPS Aus and Asia Pacific (AA466239)

MV *Limitless* with a 600m towed array is conducting a survey in the area bounded by the following positions:

33° 24'.81 S 151° 27'.97 E

33° 42'.26 S 151° 48'.78 E

32° 48'.45 S 152° 40'.77 E

32° 31'.30 S 152° 20'.53 E.

Chart temporarily affected - Aus 197 - Aus 204 - Aus 207 - Aus 208 - Aus 209 - Aus 215 - Aus 219 - Aus 423 - Aus 424 - Aus 489 - Aus 809 - Aus 810 - AX 0809E - AX 6031G - AU334152 - AU433152 - AU434151 - AU5809P1 - AU5809P2 - AU5XX204 - AU5XX208**436(T)/2010 AUSTRALIA - QUEENSLAND - Henderson Rock - Wreck**

Maritime Safety Queensland Notice 342/2010 (AA466123)

A wreck exists in position 27° 07'.57 S 153° 28'.36 E (WGS84 datum).

Mariners are advised to navigate with caution in the area.

Chart temporarily affected - Aus 236 - Aus 364 - Aus 814 - AU428153

437(T)/2010 AUSTRALIA - QUEENSLAND - Brisbane River - Quarries Reach to Parker Island Reach - Harbour works

Former Notice - 268(T)/2010 is cancelled

Maritime Safety Queensland Notice 190(T)/2007, 296(T)/2007, 677(T)/2008, 212(T)/2010, 349(T)/2010 (AA237697, AA243715, AA366844, AA243714, AA459560, AA466499)

Harbour works are in progress for the Gateway Bridge development.

A silt curtain and temporary causeway exist from the northern bank of the river to position 27° 26'.62 S 153° 06'.01 E. Another two silt curtains exist from the southern bank of the river to positions 27° 26'.77 S 153° 06'.03 E and 27° 26'.72 S 153° 06'.15 E. The offshore ends are marked by special light buoys.

A 6 knot no wash speed limit zone marked by special light buoys exists between:

27° 26'.67 S 153° 05'.74 E
 27° 26'.45 S 153° 06'.39 E
 27° 26'.60 S 153° 06'.50 E
 27° 26'.66 S 153° 06'.50 E
 27° 26'.89 S 153° 05'.87 E
 27° 26'.67 S 153° 05'.74 E.

Special light buoys, *Fl. Y.2-5s*, exist in positions:

27° 26'.74 S 153° 05'.79 E
 27° 26'.52 S 153° 06'.44 E
 27° 26'.60 S 153° 06'.50 E
 27° 26'.83 S 153° 05'.83 E.

Barge *Westpark Dredger* and MT *Susan* are onsite for the construction of a rock wall embankment in the vicinity of position 27° 26'.78 S 153° 06'.09 E. The vessels will display appropriate lights and shapes and will monitor VHF Ch 14.

During construction a 3 metre reduction in vertical clearance will exist, with 54 metres in the centre and 50 metres at the edge of the cutting.

Mariners with an air draft of over 45 metres are required to obtain written permission from the Manager Vessel Traffic Management at Brisbane Port Control on 07 33051700 prior to proceeding under the Gateway Bridges.

Mariners are advised to navigate with caution in the area.

Chart temporarily affected - Aus 238 - AU5237X8**438(T)/2010 AUSTRALIA - QUEENSLAND - Mooloolaba - Shoaling**

Former Notice - 376(T)/2010 is cancelled

Maritime Safety Queensland Notice 279(T)/2010, 326(T)/2010 (AA462641, AA466642)

Shoaling, with a least depth of 3.1m (LAT), exists within the entrance and approach channel to Mooloolah River.

Shoaling, with a least depth of 1.4m, exists near the starboard edge of the river channel between light beacon No5 (26° 40'.92 S 153° 08'.09 E (WGS84 datum)) and No7 (26° 41'.07 S 153° 08'.09 E).

Shoaling, with a least depth of 1.9m, exists in the vicinity of position 26° 41'.10 S 153° 08'.09 E.

Mariners are advised to navigate with caution in the area.

Chart temporarily affected - Aus 235**439(T)/2010 AUSTRALIA - QUEENSLAND - Gladstone - Curtis Island - Drilling operations completed**

Former Notice - 271(T)/2010 is cancelled

Maritime Safety Queensland Notice 210(T)/2010 (AA459559)

Cancel this notice on receipt.

Chart formerly affected - Aus 245 - AU5244X5

440(T)/2010 AUSTRALIA - QUEENSLAND - Douglas Shoal - Vessel salvaged*Former Notice - 377(T)/2010 is cancelled*

Maritime Safety Queensland Notice 315(T)/2010 (AA463840)

Cancel this notice on receipt.

Chart formerly affected - Aus 366 - Aus 367 - Aus 820 - AX 0367E - AX 0820E - AU424151**441(T)/2010 AUSTRALIA - QUEENSLAND - Shoalwater Bay - Live firing***Date - Until 6 May 2010*

Maritime Safety Queensland Notice 209(T)/2010 (AA459687)

Live firing activities will be conducted in the Shoalwater Bay training area during the period 26 April to 5 May 2010.

A marine danger area extends to all waters within a 3M radius of position 22° 23'.0 S 150° 30'.3 E.

All waters, creeks, beaches and other areas within the declared marine danger area are not available for access.

Chart temporarily affected - Aus 260 - Aus 367 - Aus 822 - AX 0260E - AX 0367E - AX 0822E - AX 60260 - AU423150**442(T)/2010 AUSTRALIA - QUEENSLAND - Hay Point - Anchorages established***Former Notice - 59(P)/2010 is cancelled*

Maritime Safety Queensland Notices 858/2009 (AA447785)

Cancel this notice on receipt.

Chart formerly affected - Aus 249 - Aus 823 - AX 0249E - AX 0823E - AU422149**443(T)/2010 AUSTRALIA - QUEENSLAND - Mackay - Slade Rock - Light buoy off station**

Maritime Safety Queensland Notice 351(T)/2010 (AA466490)

The port lateral light buoy, *Fl.R.2-5s* (21° 05'.15 S 149° 14'.29 E), is off station.**Chart temporarily affected - Aus 249 - Aus 250 - Aus 823 - Aus 824 - AX 0249E - AX 0823E - AU422149 - AU5250P1****444(T)/2010 AUSTRALIA - QUEENSLAND - Laguna Quays - Lights unlit; light beacons damaged**

Maritime Safety Queensland Notice 341(T)/2010 (AA466151)

Light beacons marking the entrance to Laguna Quays (20° 36'.03 S 148° 41'.21 E) may be damaged or unlit.

Mariners are advised to navigate with caution in the area.

Chart temporarily affected - Aus 252 - AU5252P1**445(T)/2010 AUSTRALIA - QUEENSLAND - Proserpine River - Light beacon destroyed; light beacon damaged**

Maritime Safety Queensland Notice 327(T)/2010 (AA466604)

The starboard lateral light beacon, *Fl.G.3s* (20° 30'.62 S 148° 44'.03 E), has been destroyed; a light buoy exists in situ.The starboard lateral light beacon, *Fl.G.3s* (20° 29'.88 S 148° 43'.52 E), has been damaged.**Chart temporarily affected - Aus 252 - Aus 824 - AU421148**

446(T)/2010 AUSTRALIA - QUEENSLAND - Whitsunday Island - Reef Point - Light beacon destroyed
 Maritime Safety Queensland Notice 334(T)/2010 (AA466602)

The port lateral light beacon, *Fl.R.2-5s* (20° 17'.45 S 148° 54'.71 E), has been destroyed.

Chart temporarily affected - Aus 252 - Aus 253 - Aus 254 - AU421148

447(T)/2010 AUSTRALIA - QUEENSLAND - Macona Inlet - Light beacon destroyed
 Maritime Safety Queensland Notice 328(T)/2010 (AA466603)

The starboard lateral light beacon, *Fl.G.2-5s* (20° 10'.29 S 148° 55'.10 E), has been destroyed.

Chart temporarily affected - Aus 252 - AU421148

448(T)/2010 AUSTRALIA - QUEENSLAND - Airlie Beach - Muddy Bay - Wreck
Former Notice - 1097(T)/2008 is cancelled
 Maritime Safety Queensland Notice 332(T)/2010 (AA466600)

A wreck exists in position 20° 15'.96 S 148° 43'.38 E.

Mariners are advised to navigate with caution in the area.

Chart temporarily affected - Aus 252 - Aus 253 - Aus 268 - AU5268P2

449(T)/2010 AUSTRALIA - QUEENSLAND - Airlie Beach - Muddy Bay - Wreck salvaged
Former Notice - 214(T)/2009 is cancelled
 Maritime Safety Queensland Notice 362/2010 (AA466909)

Cancel this notice on receipt.

Chart formerly affected - Aus 252 - Aus 253 - Aus 268 - AU5268P2

450(T)/2010 AUSTRALIA - QUEENSLAND - Airlie Beach - Abel Point - Light beacon unlit
 Maritime Safety Queensland Notice 340(T)/2010 (AA466495)

No2 port lateral light beacon (20° 15'.65 S 148° 42'.65 E) is unlit.

Chart temporarily affected - Aus 253 - Aus 268 - AU5268P2

451(T)/2010 AUSTRALIA - QUEENSLAND - Nares Rock - Light relit
Former Notice - 1244(T)/2009 is cancelled
 Maritime Safety Queensland Notice 338/2010 (AA466150)

Cancel this notice on receipt.

Chart formerly affected - Aus 825 - Aus 826 - AU320148

452(T)/2010 AUSTRALIA - QUEENSLAND - Townsville - Ross River - Drilling operations
 Maritime Safety Queensland Notice 339(T)/2010 (AA466516)

Drilling operations are in progress in the area west of the seaward end of the Ross River channel (19° 15'.29 S 146° 50'.90 E).

Mariners are advised to navigate with caution in the area.

Chart temporarily affected - Aus 256 - Aus 257 - AU420146 - AU5XX257

453(T)/2010 AUSTRALIA - QUEENSLAND - Allingham - Light restored*Former Notice* - 1288(T)/2009 is cancelled

Maritime Safety Queensland Notice 347/2010 (AA466084)

Cancel this notice on receipt.

Chart formerly affected - Aus 827 - Aus 828 - AU419146**454(T)/2010 AUSTRALIA - CORAL SEA - Mellish Reef - Light buoy off station northwestwards***Former Notice* - 388(T)/2010 is cancelled

Australian Bureau of Meteorology (AA466680)

The light buoy, *Fl. Y.3s* (15° 48'.0 S 158° 31'.0 E), is drifting and currently in position 13° 41'.05 S 152° 33'.60 E (20 Apr 2010).**Chart temporarily affected - Aus 4604 (INT 604) - AX 4604F - AU130150****455(T)/2010 AUSTRALIA - TIMOR SEA - Osborn Passage - Platform; mooring buoys***Former Notice* - 982(T)/2008 is cancelled

PTTEP Australasia (AA465730)

The drill rig *West Atlas* and *Montara* exist in position 12° 40'.33 S 124° 32'.37 E; they are damaged and unlit.

Unlit mooring buoys exist in positions 12° 39'.66 S 124° 32'.44 E, 12° 40'.72 S 124° 32'.45 E and 12° 40'.11 S 124° 32'.45 E.

The construction vessel *Jascon 25* is expected onsite from June to October 2010 to remove the *West Atlas*.

Mariners are advised to navigate with caution in the area.

Chart temporarily affected - Aus 314 - Aus 319 - Aus 4721 (INT 721) - Aus 4722 (INT 722) - AX 0314F - AX 0319F - AU313124**456(T)/2010 AUSTRALIA - WESTERN AUSTRALIA - Lacepede Islands - Scientific instrument northwestwards***Former Notice* - 392(T)/2010 is cancelled*Date* - Until 5 May 2010

CSIRO (AA466380, AA466381)

A subsurface scientific instrument, 10m below the surface, exists in position 15° 43'.68 S 121° 05'.83 E.

Chart temporarily affected - Aus 415 - Aus 4722 (INT 722) - AX 0415F - AX 4722F**457(T)/2010 AUSTRALIA - WESTERN AUSTRALIA - Regnard Bay - Scientific instruments***Date* - Until 31 May 2010

Cardno Lawson Treloar (AA465464)

Special light buoys, *Fl. Y.2-5s*, exist in positions:

20° 46'.08 S 116° 21'.11 E

20° 48'.76 S 116° 24'.24 E

20° 49'.16 S 116° 22'.62 E

20° 49'.41 S 116° 21'.35 E

20° 49'.54 S 116° 21'.16 E

20° 49'.50 S 116° 21'.06 E

20° 49'.44 S 116° 20'.84 E.

Chart temporarily affected - Aus 741 - Aus 742 - AU421116

458(T)/2010 AUSTRALIA - WESTERN AUSTRALIA - Cape Preston - Harbour works

Date - Until 30 November 2010

CITIC Pacific Mining Management Pty Ltd (AA466897 - AA466899, AA466956)

Works associated with the construction of a new breakwater are in progress in the area bounded by the following positions (WGS84 datum):

20° 50'.20 S 116° 12'.21 E
20° 49'.09 S 116° 11'.67 E
20° 49'.44 S 116° 11'.12 E
20° 50'.37 S 116° 12'.10 E.

Mariners are advised to navigate with caution in the area.

Chart temporarily affected - Aus 327 - Aus 742 - Aus 743 - AU421116**459(T)/2010 AUSTRALIA - WESTERN AUSTRALIA - Barrow Island - Seismic survey**

Date - Until 7 May 2010

Cal Dive International (Aus) Pty Ltd (AA466305)

MV *Bhagwan K* will be conducting a survey in the area bounded by the following positions:

20° 40'.7 S 115° 24'.2 E
20° 41'.2 S 115° 24'.9 E
20° 41'.5 S 115° 24'.7 E
20° 41'.4 S 115° 23'.9 E.

Chart temporarily affected - Aus 742 - AU421115**460(T)/2010 AUSTRALIA - WESTERN AUSTRALIA - Geraldton - Champion Bay - Light buoy re-established**

Former Notice - 570(T)/2009 is cancelled

Geraldton Port Authority (AA402991)

Cancel this notice on receipt.

Chart formerly affected - Aus 81

461(T)/2010 AUSTRALIA - WESTERN AUSTRALIA - Mullaloo to Warnbro Sound - Scientific instruments
Department of Transport WA (AA465142)

Special light buoys, *Fl. Y. 5s*, exist in positions:

31° 45'.85 S 115° 43'.29 E
 31° 47'.37 S 115° 42'.39 E
 31° 47'.89 S 115° 41'.75 E
 31° 52'.11 S 115° 42'.81 E
 31° 52'.52 S 115° 43'.46 E
 31° 53'.14 S 115° 43'.78 E
 31° 53'.58 S 115° 44'.25 E
 31° 53'.88 S 115° 44'.90 E
 31° 55'.73 S 115° 44'.85 E
 31° 56'.33 S 115° 44'.84 E
 31° 58'.67 S 115° 44'.79 E
 31° 59'.26 S 115° 44'.65 E
 31° 59'.76 S 115° 44'.59 E
 32° 01'.39 S 115° 43'.78 E
 32° 01'.58 S 115° 44'.62 E
 32° 01'.45 S 115° 34'.29 E
 32° 04'.79 S 115° 37'.42 E
 32° 05'.69 S 115° 37'.54 E
 32° 08'.65 S 115° 38'.57 E
 32° 20'.97 S 115° 44'.00 E.

Mariners are not to use these buoys as moorings.

Chart temporarily affected - Aus 117 - Aus 334 - Aus 754 - AX 0334E - AX 0754E - AX 66002 - AX 70117 - AU432115

462(T)/2010 AUSTRALIA - WESTERN AUSTRALIA - Fremantle - Harbour works completed

Former Notice - 83(T)/2010 is cancelled
Fremantle Ports 3(T)/2010 (AA466131)

Cancel this notice on receipt.

Chart formerly affected - Aus 112 - Aus 113 - AX 63112 - AU5XX113

463(T)/2010 AUSTRALIA - WESTERN AUSTRALIA - Success Channel to Parmelia Channel - Nav aids restored

Former Notice - 1393(T)/2009 is cancelled
Fremantle Ports Notice 3(T)/2010 (AA466131)

Cancel this notice on receipt.

Chart formerly affected - Aus 112 - Aus 113 - Aus 114 - Aus 117 - AX 63112 - AX 70117 - AU5111X4 - AU5XX113

464(T)/2010 AUSTRALIA - WESTERN AUSTRALIA - King George Sound - Light buoys restored

Former Notice - 398(T)/2010 is cancelled
Albany Port Authority (AA466456)

Cancel this notice on receipt.

Chart formerly affected - Aus 109 - Aus 110 - Aus 118 - AX 0110E - AX 0118E - AU5XX109

465(T)/2010 AUSTRALIA - TASMANIA - Huon River - Marine farm works completed

Former Notice - 340(T)/2010 is cancelled

Marine and Safety Tasmania Notice M39/2010 (AA461716)

Cancel this notice on receipt.

Chart formerly affected - Aus 173 - AU444146**466(T)/2010 AUSTRALIA - TASMANIA - Huon River - Butts Reef - Light beacon damaged**

Marine and Safety Tasmania Notice M50/2010 (AA466526)

The isolated danger light beacon (43° 16'.45 S 147° 07'.54 E) has been damaged.

Mariners are advised to navigate with caution in the area.

Chart temporarily affected - Aus 173 - Aus 795 - AU444147**467(T)/2010 AUSTRALIA - TASMANIA - Triabunna - Beacon destroyed**

Date - Until 15 May 2010

Marine and Safety Tasmania Notice 49/2010 (AA466522)

The starboard lateral beacon (42° 31'.21 S 147° 54'.85 E) has been destroyed.

Chart temporarily affected - Aus 170 - Aus 175 - AU443147 - AU5XX175**468(T)/2010 AUSTRALIA - VICTORIA - Western Port - Rhyll - Harbour works**

Former Notice - 342(T)/2010 is cancelled

Date - Until 14 May 2010

Victorian Notice 36(T)/2010 (AA466109)

Works associated with the installation of a new pontoon, gangway and associated piling are in progress at Rhyll jetty (38° 28'.00 S 145° 18'.55 E) and boat ramp (38° 27'.93 S 145° 18'.60 E).

Mariners are advised to navigate with caution in the area.

Chart temporarily affected - Aus 150 - AU5150P3

HYDROGRAPHIC REPORTS

<i>Locality</i>	<i>Report</i>	<i>Ship/Authority</i>	<i>Observer</i>
PNG- Milne Bay	Depths	HMAS <i>Leeuwin</i>	
India- Mumbai	Production platform	INS <i>Suvarna</i>	
WA- Barrow Island	Seismic survey	Cal Dive International (Australia) Pty Ltd	

NAVIGATION WARNINGS

The following radio messages have been received during the period to 23 April 2010. Signal copies of these messages may be destroyed. It is recommended that the reprint of Navigational Warnings should be kept in a file or a book divided into areas. Cancellation should be made on receipt of signals and reprints.

Rigs on location other than those listed in the latest Section III summary are the subject of Radio Navigational Warnings. Rigs in transit will not be the subject of Warnings.

AUSCOAST WARNING

- 094 Cancelled.
- 095 Cancelled.
- 096 Cancelled.
- 097 Special purpose vessel Geo Atlantic conducting seismic survey in area bounded by 16° 00'·0 S to 20° 00'·0 S and 113° 10'·0 E to 117° 40'·0 E. 6M clearance requested.
- 098 Special purpose vessel *Limitless* conducting seismic survey in area bounded by 33° 25'·14 S 151° 42'·27 E to 33° 08'·27 S 152° 05'·26 E. 2M clearance requested.
- 099 Cancelled.
- 100 Low Rocky Point light K3659 (42° 59'·01 S 145° 30'·15 E) altered Fl.5s 13M.

NAVAREA X WARNINGS

Nil.

Navigational warnings in force as at 230001UTC APR 10.**Auscoast**

2010 007 053 060 070 076 077 080 081 087 092 093 097 098 100

Navarea X

005

Summary of mobile drilling rigs as at 230001UTC APR 10.

<i>Name</i>	<i>Position</i>
Ocean Patriot	38° 10'·86 S 148° 35'·58 E
Ocean Shield	10° 54'·01 S 126° 45'·26 E
Songa Venus	13° 40'·53 S 123° 21'·31 E
Transocean Legend	13° 41'·53 S 122° 11'·29 E
Maersk Discoverer	19° 01'·34 S 114° 33'·25 E
Jack Bates	20° 04'·24 S 113° 46'·46 E
Ensco 7500	20° 18'·48 S 114° 41'·25 E
Atwood Eagle	20° 37'·83 S 114° 28'·78 E
Nan Hai 6	21° 26'·23 S 114° 02'·48 E
Ocean Epoch	21° 32'·30 S 114° 05'·60 E

NAVAREA XIV WARNINGS

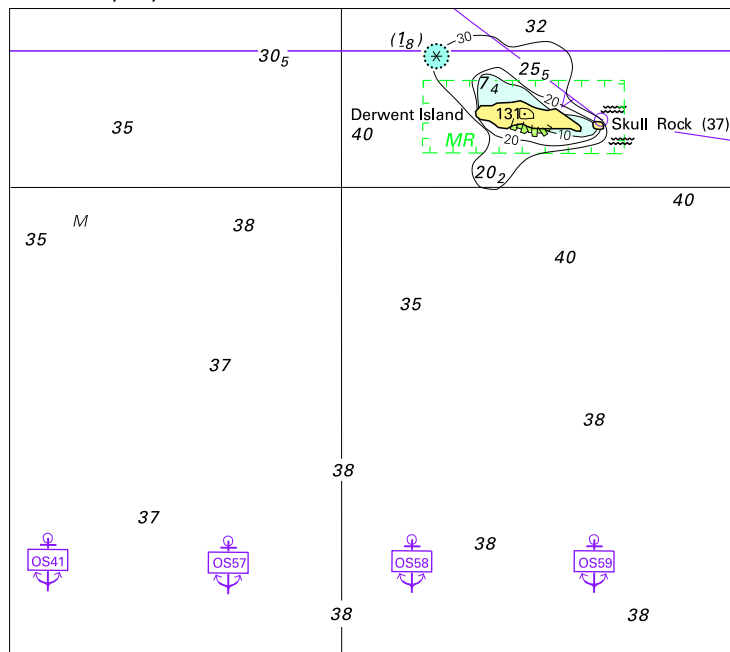
Nil.

Navarea XIV warnings in force as at 230001UTC APR 10.

2009 059

2010 007 014

To accompany Australian Notice to Mariners 411/2010

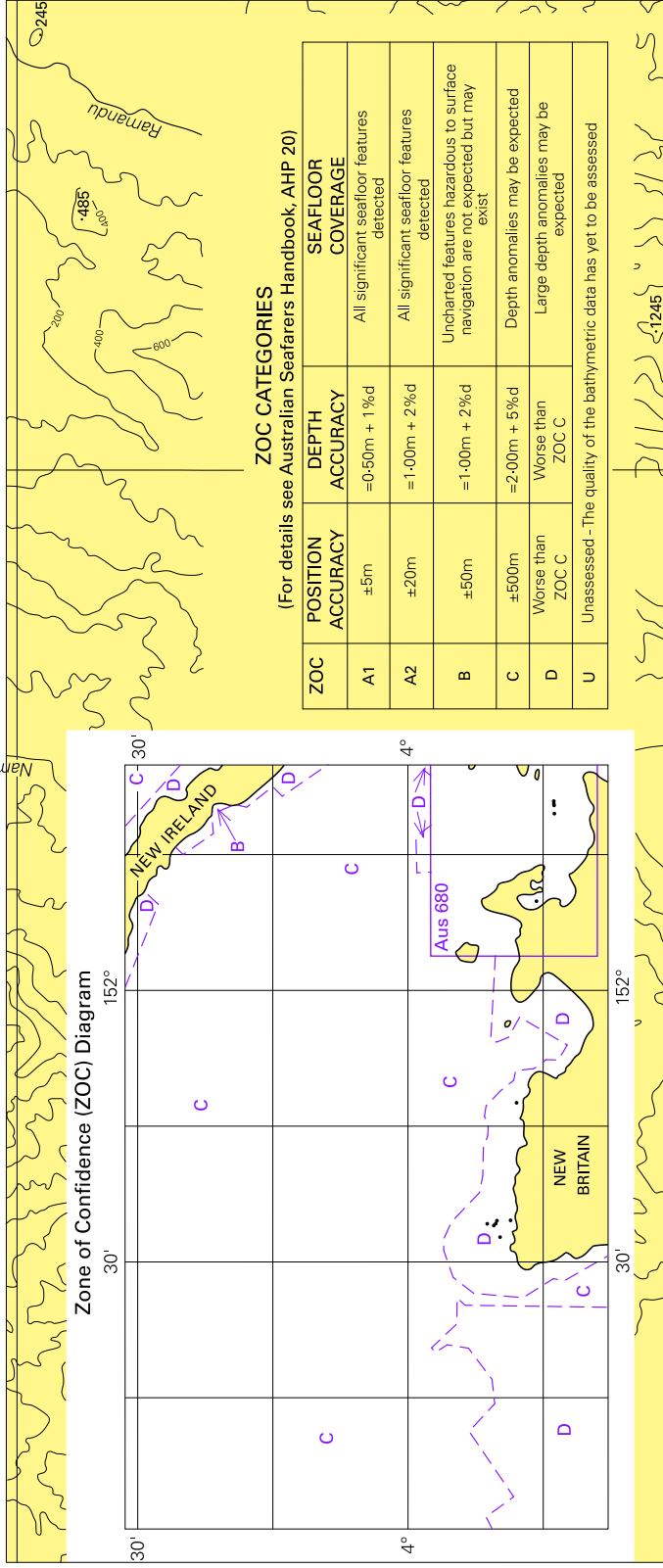


© Commonwealth of Australia 2010

(95.5 x 85.5mm)

Block for chart Aus 824

To accompany Australian Notice to Mariners 414/2010



ZOC CATEGORIES

(For details see Australian Seafarers Handbook, AHP 20)

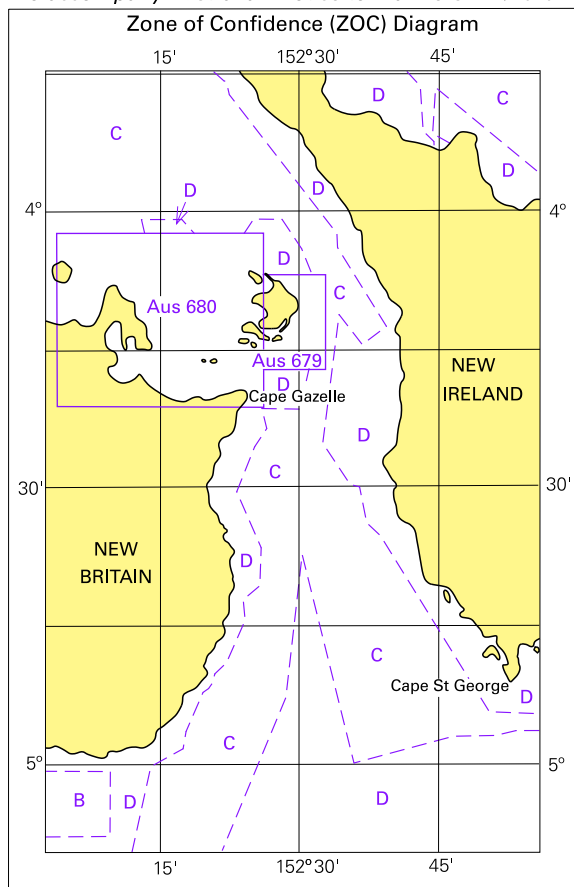
ZOC	POSITION ACCURACY	DEPTH ACCURACY	SEAFLOOR COVERAGE
A1	±5m	±0.50m + 1% d	All significant seafloor features detected
A2	±20m	±1.00m + 2% d	All significant seafloor features detected
B	±50m	±1.00m + 2% d	Uncharted features hazardous to surface navigation are not expected but may exist
C	±500m	±2.00m + 5% d	Depth anomalies may be expected
D	Worse than ZOC C	Worse than ZOC C	Large depth anomalies may be expected
U	Unassessed	The quality of the bathymetric data has yet to be assessed	

Block B for chart Aus 545

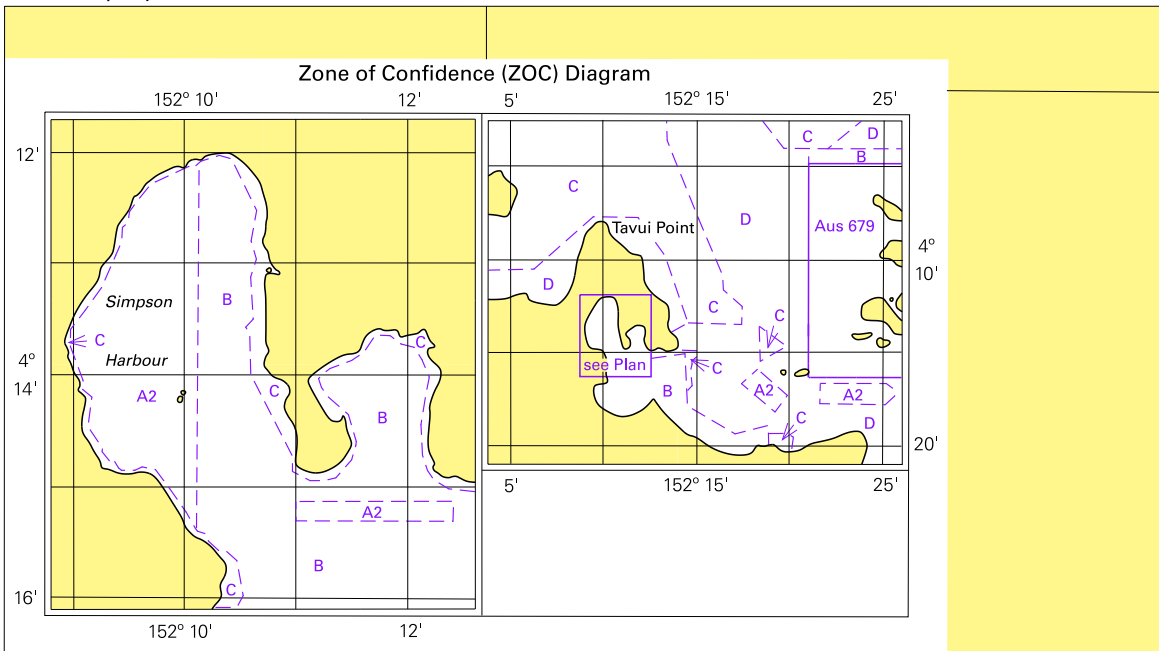
© Commonwealth of Australia 2010

(210:9 x 89:3mm)

To accompany Australian Notice to Mariners 414/2010



To accompany Australian Notice to Mariners 414/2010

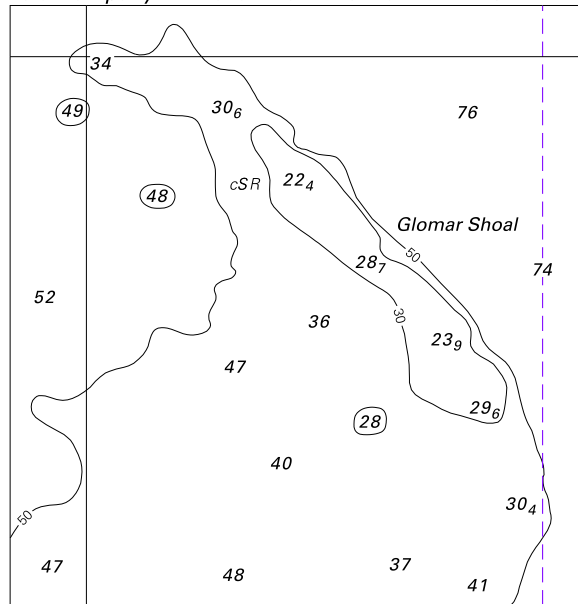


Block for chart Aus 680

© Commonwealth of Australia 2010

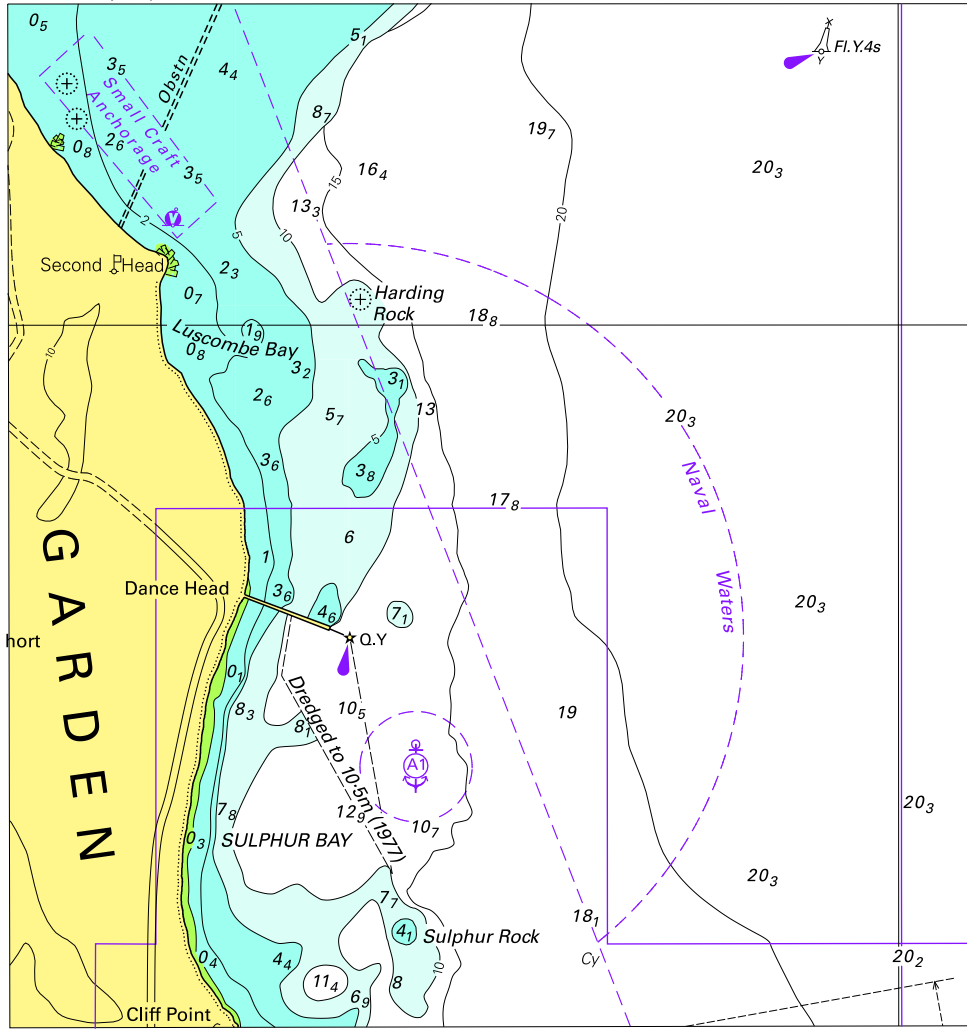
(153.1 x 85.7mm)

To accompany Australian Notice to Mariners 417/2010



© Commonwealth of Australia 2010
Block for chart Aus 741 (76.1 x 79.3mm)

To accompany Australian Notice to Mariners 422/2010



Block for chart Aus 117

© Commonwealth of Australia 2010

(126.7 x 135.4mm)

