



9 April 2010

Edition 7

Australian Notices to Mariners are the authority for correcting Australian Charts and Publications

---

# AUSTRALIAN NOTICES TO MARINERS

Notices 345 – 401 

## List of Temporary and Preliminary Notices in force Cumulative List – April 2010

Published fortnightly by the Australian Hydrographic Service

Commodore R. NAIRN RAN  
*Hydrographer of Australia*

---

### SECTIONS.

- I. [Australian Notices to Mariners, including blocks and notes.](#)
- II. [Hydrographic Reports.](#)
- III. [Navigational Warnings.](#)

### SUPPLEMENTS.

- I. [Tracings](#)
- II. [Cumulative List of Australian Notices to Mariners.](#)
- III. [Temporary and Preliminary Notices in force.](#)
- IV. [Amendments to Admiralty List of Lights and Fog Signals \(Vol K\), Radio Signals \(NP 281\(2\), 282, 283\(2\), 285, 286\(4\)\) and Sailing Directions \(NP 9, 13, 14, 15, 33, 34, 35, 36, 39, 44, 51, 60, 61, 62, 100, 136\).](#)

---

© Commonwealth of Australia 2010

This work is copyright. Apart from any use permitted under the Copyright Act 1968, no part may be reproduced by any process, adapted, communicated or commercially exploited without prior written permission from The Commonwealth represented by the Australian Hydrographic Service.

## **IMPORTANT NOTICE**

This edition of Notices to Mariners includes all significant information affecting AHS products which the AHS has become aware of since the last edition. All reasonable efforts have been made to ensure the accuracy and completeness of the information, including third party information, on which these updates are based. The AHS regards third parties from which it receives information as reliable, however the AHS cannot verify all such information and errors may therefore exist. The AHS does not accept liability for errors in third party information.

---

## **GENERAL INSTRUCTIONS**

The substance of these notices should be inserted on the charts affected.

Bearings are referred to the true compass and are reckoned clockwise from North; those relating to lights are given as seen by an observer from seaward. Positions quoted in permanent notices relate to the horizontal datum for the chart(s). When preliminary or temporary notices affect multiple charts, positions will be provided in relation to only one horizontal datum and that datum will be specified. When the multiple charts do not have a common horizontal datum, mariners will be required to adjust the position(s) for those charts not on the specified datum. The range quoted for a light is its nominal range. Depths are with reference to the chart datum of each chart. Heights are above mean high water springs or mean higher high water, as appropriate.

The capital letter (P) or (T) after the number of any notice denotes a preliminary or temporary notice respectively, which are contained separately at the end of the permanent notices. A star (\*) adjacent to the number of a notice indicates that the notice is based on original information.

---

## **REPORTING OF DANGERS**

Mariners are particularly requested to notify the AUSTRALIAN HYDROGRAPHIC SERVICE, Locked Bag 8801 Wollongong, NSW 2500 (Fax 02-4223 6599, e-mail [Hydro.NTM@defence.gov.au](mailto:Hydro.NTM@defence.gov.au) or, alternatively by filling in and submitting the [Hydrographic Notes](#) forms located on the web site – [www.hydro.gov.au](http://www.hydro.gov.au)), immediately on the discovery of new dangers or suspected dangers to navigation. For changes or defects in aids to navigation notify AusSAR (Fax 02-6230 6868 or email [rccaus@amsa.gov.au](mailto:rccaus@amsa.gov.au)).

---

## **AUTHORISED USE**

Copies of Australian notices are available free of charge from the Australian Hydrographic Service (AHS) website ([www.hydro.gov.au](http://www.hydro.gov.au)) and through the eNotices (email) service ([www.hydro.gov.au/enotices/enotices.htm](http://www.hydro.gov.au/enotices/enotices.htm)).

Individual Notices may be copied for the purpose of inserting Notice substance on official charts and publications. Paper copies may be printed by chart agents and distributed to customers on a cost recovery basis. Participating chart agents are listed on the AHS website as providing a 'Paper Notices to Mariners' service ([www.hydro.gov.au/prodserv/distributors/distributors.htm](http://www.hydro.gov.au/prodserv/distributors/distributors.htm)). Copies of the notices may not be sold for profit without prior written agreement.

## NUMERICAL INDEX OF NOTICES TO MARINERS

### Edition No 7

Notices	Aus Chart, INT Chart, ENC Cell, AHP
345.....	Aus 208, 301, AU210130, 340142, 439142, 5125P3, 5141P3, 5XX230, 5XX265, 5XX626
346.....	Amendment to Australian Notice to Mariners No 21; No 22
347.....	Amendment to Australian National Tide Tables 2010
348.....	Aus 194
349.....	Aus 198
350.....	Aus 200, 201, 202
351.....	Aus 215
352.....	Aus 207
353.....	Aus 220
354.....	Aus 236
355.....	Aus 247, 265
356.....	Aus 270, 830
357.....	Aus 831
358.....	Aus 4604, INT 604, AX 4604F
359.....	Aus 292, 293, 700, 839
360.....	Aus 376, 839
361.....	Aus 628
362.....	Aus 383, 509, 512, 513
363.....	Aus 57, 58, 327, 741
364.....	Aus 81
365.....	Aus 115
366.....	Aus 116, 755, AX 0755E
367.....	Aus 345, 444, 781
368.....	Aus 4709, INT 709
369.....	Aus 150, 151, 152
370.....	Cumulative List of Australia Notices to Mariners – April 2010
371(T).....	Aus 198, 199, AU5198X9
372(T).....	Aus 207, 208, AU5XX208
373(T).....	Aus 236, AU428153
374(T).....	Aus 236, AU428153
375(T).....	Aus 238, AU5237X8
376(T).....	Aus 235
377(T).....	Aus 366, 367, 820, AX 0367E, 0820E, AU424151
378(T).....	Aus 367, 822, AX 0367E, 0822E, AU423150
379(T).....	Aus 249, 250, AX 0249E, AU5250P2
380(T).....	Aus 251, AU421148
381(T).....	Aus 251, AU421148
382(T).....	Aus 251, 252, 824, AU421149
383(T).....	Aus 252, 254, 824, AU421149, 5254P1
384(T).....	Aus 252, 253, 824, 825, AU421149
385(T).....	Aus 252, 253, 268, AU5268P2
386(T).....	Aus 825, AU421148
387(T).....	Aus 258, 829, AU418146, 5258P1
388(T).....	Aus 4604, INT 604, AX 4604F, AU130150
389(T).....	Aus 376, 377, 840, AX 60377, AU410143
390(T).....	Aus 378, 502, AU309144, 309145, 409145
391(T).....	Aus 4, AU5XX4P1
392(T).....	Aus 322, AX 0322F, AU316121
393(T).....	Aus 57, 58, 59, AU5XXX58
394(T).....	Aus 328, AU320115
395(T).....	Aus 328, 415, 416, 4708, INT 708, AX 0415F, 4708F, AU130090, 320114, 321114
396(T).....	Aus 64, 328, 743, 744, AU422114, 422115
397(T).....	Aus 116, 755, AX 0755E, 66002, AU433115
398(T).....	Aus 109, 110, 118, AX 0110E, 0118E, AU5XX109
399(T).....	Aus 444, 778
400(T).....	Aus 4709, INT 709
401(T).....	Temporary and Preliminary notices in force



ENC Cell	Notices
AU130090 .....	395(T)
AU130150 .....	388(T)
AU210130 .....	345
AU309144 .....	390(T)
AU309145 .....	390(T)
AU316121 .....	392(T)
AU320114 .....	395(T)
AU320115 .....	394(T)
AU321114 .....	395(T)
AU340142 .....	345
AU409145 .....	390(T)
AU410143 .....	389(T)
AU418146 .....	387(T)
AU421148 .....	380(T), 381(T), 386(T)
AU421149 .....	382(T), 383(T), 384(T)
AU422114 .....	396(T)
AU422115 .....	396(T)
AU423150 .....	378(T)
AU424151 .....	377(T)
AU428153 .....	373(T), 374(T)
AU433115 .....	397(T)
AU439142 .....	345
AU5XX4P1 .....	391(T)
AU5XX58 .....	393(T)
AU5XX109 .....	398(T)
AU5125P3 .....	345
AU5141P3 .....	345
AU5198X9 .....	371(T)
AU5XX208 .....	372(T)
AU5XX230 .....	345
AU5237X8 .....	375(T)
AU5250P2 .....	379(T)
AU5254P1 .....	383(T)
AU5258P1 .....	387(T)
AU5XX265 .....	345
AU5268P2 .....	385(T)
AU5XX626 .....	345

**345 AUSTRALIA - Product**

Australian Hydrographic Service (AA454926, AA464722)

**New Edition**

<i>Chart</i>	<i>Published</i>	<i>Title and description of amendments</i>	<i>Scale</i>	<i>Index Chart</i>	<i>Price</i>
Aus 208	26/3/2010	Australia - East Coast - New South Wales - Newcastle Harbour 32° 52'.60 S - 32° 56'.80 S 151° 45'.46 E - 151° 48'.62 E Inset: Hunter River (South Arm) 32° 52'.59 S - 32° 53'.39 S 151° 43'.98 E - 151° 45'.72 E <i>New edition with general updating throughout. New inset Hunter River (South Arm) depicting Kooragang berths No 8 and 9.</i>	1:7 500     1:10 000	Aus 5001	\$35.00
Aus 301	26/2/2010	Australia - North Coast - Queensland - Booby Island to Archer River 10° 33' 55" S - 13° 38' 43" S 140° 29' 18" E - 142° 28' 05" E <i>New edition updated for maritime boundaries and referred to WGS84.</i>	1:300 000	Aus 5000	\$35.00

**New Electronic Navigation Chart (Seafarer ENC)**

<i>Cell Name</i>	<i>Released</i>	<i>Title</i>
AU210130	April 2010	Australia - Indonesia - Arafura Sea
AU340142	April 2010	Victoria - Southern Ocean Cell 2
AU439142	April 2010	Victoria - Lady Julia Percy Island to Port Campbell
AU5125P3	April 2010	South Australia - Wirrina Cove
AU5141P3	April 2010	Victoria - Port Campbell
AU5XX230	April 2010	Queensland - Gold Coast Seaway
AU5XX265	April 2010	Queensland - Port Alma
AU5XX626	April 2010	Papua New Guinea - South Coast - Approaches to Daru

For further details refer to the AHS website at [www.hydro.gov.au](http://www.hydro.gov.au) for new edition and new chart stock arrival information.

When placing orders with a chart agent, mariners should advise whether their order pertains to the current edition or the new edition.

**346 AUSTRALIA - Product - Amendment to Australian Notice to Mariners No 21; No 22**

Auscoast Warning 80/2010 (AA462445), Maritime Safety Queensland Notice 251/2010 (AA461990, AA463473)

Page 31

*Amend* para 2 to read ....Brisbane Harbour Control and Townsville Reef Centre....

Page 97

*Amend* para 13 to read ....situated at Townsville.

Page 99

*Amend* para 10 to read ....situated at Townsville.

*Amend*

para 36 to read Contact details for REEFVTS are:

(a) telephone: +61 (0)7 47211536;

(b) facsimile: +61 (0)7 47210633; or

(b) email: reefvts@rsc1.amsa.gov.au

**347 AUSTRALIA - Product - Amendment to Australian National Tide Tables 2010**  
Australian Hydrographic Service (AA461731)

Page 330

*Amend* Foul Bay To Chart Datum to 0.0

**348\* AUSTRALIA - NEW SOUTH WALES - Port Kembla - Light buoys established**  
NSW Maritime (AA444956)

**Aus 194 [192/2010]**

Insert	starboard lateral conical light buoy, <i>Fl.G.3s</i> , without topmark	34° 28'.332 S	150° 54'.759 E
	starboard lateral conical light buoy, <i>Fl.G.3s</i> , without topmark	34° 28'.270 S	150° 54'.750 E
	starboard lateral conical light buoy, <i>Fl.G.3s</i> , without topmark	34° 28'.228 S	150° 54'.746 E
	starboard lateral conical light buoy, <i>Fl.G.3s</i> , without topmark	34° 28'.148 S	150° 54'.743 E
Delete	buoy	34° 28'.34 S	150° 54'.76 E
	buoy	34° 28'.27 S	150° 54'.76 E
	buoy	34° 28'.23 S	150° 54'.76 E
	buoy	34° 28'.16 S	150° 54'.75 E
	depth, 7 <sub>m</sub>	34° 28'.28 S	150° 54'.75 E

**349\* AUSTRALIA - NEW SOUTH WALES - Georges River - Alford's Point - Infrastructure; nav aids**  
DIGO (AA460826, DHDB 1467926), NSW Maritime (AA299449)

**Aus 198 [283/2010]**

Insert	accompanying block	33° 58'.4 S	151° 02'.0 E
--------	--------------------	-------------	--------------

**350\* AUSTRALIA - NEW SOUTH WALES - Port Jackson - Bradleys Head - Wreck**  
Sydney Ports Corporation (AA461499)

**Aus 200 [242/2010]**

Substitute	depth, 15 <sub>2</sub> <i>m</i> , for depth, 14 <sub>9</sub> <i>m</i>	33° 51'.37 S	151° 14'.85 E
------------	---	--------------	---------------

**Aus 201 [194/2010]**

Insert	submerged wreck orientation NW and depth, 15 <sub>2</sub> <i>m</i> , with legend <i>Wk</i>	33° 51'.276 S	151° 14'.924 E
Delete	submerged wreck and depth, 14 <sub>9</sub> <i>m</i> , with legend depth, 16 <i>m</i>	33° 51'.30 S	151° 14'.96 E
		33° 51'.26 S	151° 14'.92 E

**Aus 202 [146/2010]**

Insert	submerged wreck orientation NW and depth, 15 <sub>2</sub> <i>m</i> , with legend <i>Wk</i>	33° 51'.276 S	151° 14'.924 E
Delete	depth, 16 <i>m</i>	33° 51'.26 S	151° 14'.92 E
	submerged wreck and depth, 14 <sub>9</sub> <i>m</i> , with legend	33° 51'.30 S	151° 14'.96 E

**351\* AUSTRALIA - NEW SOUTH WALES - Pittwater - Island Inlet to Coasters Retreat - Buoys altered**  
NSW Maritime (AA444956)

**Aus 215 [1103/2007]**

Insert	starboard lateral spar buoy, without topmark	33° 39'.697 S	151° 18'.441 E
	port lateral spar buoy, without topmark	33° 39'.696 S	151° 18'.410 E
Move	buoy	33° 36'.75 S	151° 19'.11 E
	to	33° 36'.734 S	151° 19'.095 E
	buoy	33° 36'.64 S	151° 19'.01 E
	to	33° 36'.667 S	151° 19'.204 E
Delete	depth, 1m	33° 39'.68 S	151° 18'.45 E

**352\* AUSTRALIA - NEW SOUTH WALES - Newcastle - Infrastructure; nav aids; maintained depth limit; ZOC diagram**  
Australian Hydrographic Service (AA460867)

**Aus 207 [1212/2009]**

Insert	accompanying block	32° 52'.7 S	151° 45'.2 E
Substitute	accompanying ZOC diagram	32° 55'.2 S	151° 42'.0 E

**353\* AUSTRALIA - NEW SOUTH WALES - Tweed River - Terranora Inlet - Light buoy established**  
NSW Maritime (AA444956)

**Aus 220 (plan, Tweed River Entrance) [249/2010]**

Insert	starboard lateral conical light buoy, <i>Fl.G.3s</i> , without topmark	28° 11'.127 S	153° 32'.773 E
--------	--	---------------	----------------

**354\* AUSTRALIA - QUEENSLAND - Moreton Bay - Manly - Infrastructure; nav aids**  
*Former Notice - 1119(T)/2009 is cancelled*  
Maritime Safety Queensland Notice 839/2009 (AA446101)

**Aus 236 [289/2010]**

Insert	accompanying block	27° 26'.3 S	153° 11'.5 E
--------	--------------------	-------------	--------------

**Aus 236 (plan, Manly Boat Harbour)**

Insert	accompanying block	27° 26'.5 S	153° 11'.5 E
--------	--------------------	-------------	--------------

**355\* AUSTRALIA - QUEENSLAND - Port Alma - Balacava Island - Lights altered**  
Maritime Safety Queensland Notice 306/2010 (AA463817)

**Aus 247 [197/2010]**

Amend	light to <i>Iso.2s 28m 6M</i>	23° 33'.9 S	150° 55'.2 E
	light to <i>Q.17m 10M</i>	23° 33'.1 S	150° 55'.6 E

**Aus 265 [197/2010]**

Amend	light to <i>Iso.2s 28m 6M</i>	23° 33'.89 S	150° 55'.22 E
	light to <i>Q.17m 10M</i>	23° 33'.10 S	150° 55'.62 E

**356\* AUSTRALIA - QUEENSLAND - Port Douglas - Pilot boarding place**

Maritime Safety Queensland Notice 269/2010 (AA462497)

**Aus 270 (plan, Port Douglas) [1416/2009]**

Insert	pilot boarding place, centred on	16° 28'.2 S	145° 29'.0 E
--------	----------------------------------	-------------	--------------

**Aus 830 [155/2010]**

Insert	pilot boarding place, centred on	16° 28'.2 S	145° 29'.0 E
--------	----------------------------------	-------------	--------------

Delete	depth, 10 <sub>2</sub> m	16° 28'.3 S	145° 29'.4 E
--------	--------------------------	-------------	--------------

**357\* AUSTRALIA - QUEENSLAND - Cooktown - Pilot boarding place**

Maritime Safety Queensland Notice 268/2010 (AA462496)

**Aus 831 [758/2009]**

Insert	pilot boarding place, centred on	15° 27'.0 S	145° 18'.0 E
--------	----------------------------------	-------------	--------------

Delete	depth, 10 <sub>2</sub> m	15° 27'.2 S	145° 18'.1 E
--------	--------------------------	-------------	--------------

**358\* AUSTRALIA - CORAL SEA - Mellish Reef - Light buoy northeastwards**

Australian Bureau of Meteorology (AA322324, AA322323)

**Aus 4604 (INT 604) [1359/2009]***On certain copies only*

Insert	red and white cylindrical light buoy, <i>Fl. Y. 3s</i> , without topmark	15° 48'.0 S	158° 31'.0 E
--------	--	-------------	--------------

Delete	depth, 3383m	15° 47'.0 S	158° 37'.0 E
--------	--------------	-------------	--------------

**AX 4604F [1359/2009]***On certain copies only*

Insert	red and white cylindrical light buoy, <i>Fl. Y. 3s</i> , without topmark	15° 48'.0 S	158° 31'.0 E
--------	--	-------------	--------------

Delete	depth, 3383m	15° 47'.0 S	158° 37'.0 E
--------	--------------	-------------	--------------

**359\* AUSTRALIA - TORRES STRAIT - Prince of Wales Channel - Herald Patches - Depths**

Australian Hydrographic Service (AA463201)

**Aus 292 [1266/2009]**

Substitute	depth, 12 <sub>1</sub> m, for depth, 12 <sub>2</sub> m	10° 29'.9 S	142° 20'.6 E
	depth, 11m, for depth, 10 <sub>7</sub> m	10° 29'.7 S	142° 21'.0 E

**Aus 293 [1266/2009]**

Insert	depth, 12 <sub>1</sub> m, enclosed by danger circle	10° 29'.955 S	142° 20'.693 E
	depth, 11m, enclosed by danger circle	10° 29'.833 S	142° 21'.080 E
	depth, 9 <sub>7</sub> m, and extend contour N to enclose	10° 30'.106 S	142° 20'.169 E
	depth, 9 <sub>4</sub> m, and extend contour N to enclose	10° 30'.147 S	142° 20'.354 E

Delete	depth, 12 <sub>2</sub> m, and enclosing danger circle	10° 29'.96 S	142° 20'.69 E
	depth, 10 <sub>7</sub> m, and enclosing danger circle	10° 29'.84 S	142° 21'.08 E
	depth, 9 <sub>4</sub> m	10° 30'.14 S	142° 20'.16 E
	depth, 10 <sub>2</sub> m	10° 30'.09 S	142° 20'.35 E

**Aus 700 [1097/2009]**

Substitute	depth, 12 <sub>1</sub> m, for depth, 12 <sub>2</sub> m	10° 29'.8 S	142° 20'.4 E
------------	--	-------------	--------------

**Aus 839 [1357/2009]**

Substitute	depth, 11m, for depth, 10 <sub>7</sub> m	10° 29'.7 S	142° 21'.1 E
------------	--	-------------	--------------

**360\* AUSTRALIA - TORRES STRAIT - Kirkcaldie Reef - Light**

Australian Hydrographic Service (AA462598)

**Aus 376 [201/2010]**

Amend	light to <i>Fl.WR.2.5s 10/8M</i>	10° 20'.0 S	142° 50'.0 E
-------	----------------------------------	-------------	--------------

**Aus 839 [359/2010]**

Amend	light to <i>Fl.WR.2.5s 9m 10/8M</i>	10° 20'.0 S	142° 50'.0 E
-------	-------------------------------------	-------------	--------------

**361\* PAPUA NEW GUINEA - Meimeira Island - Light beacons established**

National Maritime Safety Authority PNG Notice 15/2010 (AA462624, AA463797)

**Aus 628 [251/2010]**

Substitute	light beacon, <i>Fl.R.4s</i> , with port lateral topmark for beacon	10° 13'.50 S	150° 52'.68 E
	light beacon, <i>Fl.R.1.5s</i> , with port lateral topmark for beacon	10° 13'.37 S	150° 52'.62 E

**362\* PAPUA NEW GUINEA - Salupai Islands - North Island - Light beacon established**

National Maritime Safety Authority PNG (AA459758, AA459759)

**Aus 383 [296/2009]**Insert light beacon, *Fl(3)12s 10M*, without topmark 10° 13'.10 S 151° 51'.95 E

Delete light and sector emanating from light 10° 13'.3 S 151° 52'.0 E

**Aus 509 [250/2010]**Insert light beacon, *Fl(3)12s 8m 10M*, without topmark 10° 13'.10 S 151° 51'.95 E

Delete light and sector emanating from light 10° 13'.3 S 151° 52'.0 E

**Aus 512 [1050/2009]**Insert light beacon, *Fl(3)12s 8m 10M*, without topmark 10° 13'.10 S 151° 51'.95 E

Delete light and sector emanating from light 10° 13'.3 S 151° 52'.0 E

**Aus 513 [524/2008]**Insert light beacon, *Fl(3)12s 8m 10M*, without topmark 10° 13'.10 S 151° 51'.95 E

Delete light and sector emanating from light 10° 13'.3 S 151° 52'.0 E

**363\* AUSTRALIA - WESTERN AUSTRALIA - Dampier - Mermaid Sound - Light buoy altered***Former Notice - 181(T)/2010 is cancelled*

Dampier Port Authority Notice 10/2010 (AA462646)

**Aus 57 [299/2010]**

Amend light buoy to Q(3)Y.6s 20° 25'.45 S 116° 42'.95 E

**Aus 58 [299/2010]**

Amend light buoy to Q(3)Y.6s 20° 25'.45 S 116° 42'.95 E

**Aus 327 [161/2010]**

Amend light buoy to Q(3)Y.6s 20° 25'.5 S 116° 42'.9 E

**Aus 741 [161/2010]**

Amend light buoy to Q(3)Y.6s 20° 25'.5 S 116° 43'.0 E

**364\* AUSTRALIA - WESTERN AUSTRALIA - Geraldton - Champion Bay - Light beacons repositioned**

Geraldton Port Authority (AA112421, AA244854)

**Aus 81 (plan, Port of Geraldton) [1056/2009]**

Move	light beacon	28° 45'.44 S	114° 34'.42 E
	to	28° 45'.442 S	114° 34'.420 E
	light beacon	28° 45'.83 S	114° 35'.96 E
	to	28° 45'.831 S	114° 35'.968 E
	light beacon	28° 46'.06 S	114° 36'.12 E
	to	28° 46'.063 S	114° 36'.116 E

**365\* AUSTRALIA - WESTERN AUSTRALIA - Bunbury - Light beacon repositioned**

Department of Transport WA (AA458661, AA458663)

**Aus 115 (plan, Port of Bunbury) [302/2010]**

Move	light beacon	33° 18'.26 S	115° 38'.84 E
	to	33° 18'.260 S	115° 38'.844 E

**366\* AUSTRALIA - WESTERN AUSTRALIA - Geographe Bay - Light buoy repositioned**

Department of Transport WA (AA458661, AA458663)

**Aus 116 (plan, Port Geographe Marina) [41/2010]**

Move	light buoy	33° 37'.52 S	115° 22'.88 E
	to	33° 37'.546 S	115° 22'.793 E

**Aus 755 [1166/2009]**

Move	light buoy	33° 37'.5 S	115° 22'.9 E
	to	33° 37'.55 S	115° 22'.79 E

**AX 0755E [1166/2009]**

Move	light buoy	33° 37'.5 S	115° 22'.9 E
	to	33° 37'.55 S	115° 22'.79 E

**367\* AUSTRALIA - SOUTH AUSTRALIA - Port Wakefield - Light beacons established**

Department for Transport, Energy and Infrastructure Notice 13/2010 (AA462512)

**Aus 345 [304/2010]**

Insert	starboard lateral light beacon, <i>Fl.G.2s</i> , with topmark	34° 33'.94 S	138° 18'.08 E
	starboard lateral light beacon, <i>F.G.</i> , with topmark	34° 33'.91 S	138° 13'.34 E
	starboard lateral light beacon, <i>Q.G.</i> , with topmark	34° 33'.88 S	138° 08'.53 E
	starboard lateral light beacon, <i>Fl.G.2s</i> , with topmark	34° 29'.11 S	138° 08'.48 E
	starboard lateral light beacon, <i>F.G.</i> , with topmark	34° 26'.68 S	138° 08'.59 E
	starboard lateral light beacon, <i>Q.G.</i> , with topmark	34° 24'.05 S	138° 08'.61 E
	starboard lateral light beacon, <i>Fl.G.2s</i> , with topmark	34° 20'.15 S	138° 08'.58 E

Delete	depth, 3 $\frac{1}{4}$ fm	34° 33'.6 S	138° 08'.6 E
--------	---------------------------	-------------	--------------

**Aus 444 [305/2010]**

Insert	starboard lateral light beacon, <i>Q.G.</i> , with topmark	34° 33'.88 S	138° 08'.53 E
--------	--	--------------	---------------

Delete	depth, 3 $\frac{1}{4}$ fm	34° 33'.8 S	138° 08'.0 E
	depth, 5 $\frac{3}{4}$ fm	34° 33'.0 S	138° 08'.3 E

**Aus 781 [1110/2009]**

Insert	starboard lateral light beacon, <i>F.G.</i> , with topmark	34° 34'.00 S	138° 13'.26 E
	starboard lateral light beacon, <i>Q.G.</i> , with topmark	34° 33'.97 S	138° 08'.45 E
	starboard lateral light beacon, <i>Fl.G.2s</i> , with topmark	34° 29'.20 S	138° 08'.40 E
	starboard lateral light beacon, <i>F.G.</i> , with topmark	34° 26'.77 S	138° 08'.51 E
	starboard lateral light beacon, <i>Q.G.</i> , with topmark	34° 24'.14 S	138° 08'.53 E

Substitute	starboard lateral light beacon, <i>Fl.G.2s</i> , with topmark for beacon	34° 34'.0 S	138° 18'.0 E
	starboard lateral light beacon, <i>Fl.G.2s</i> , with topmark for beacon	34° 20'.2 S	138° 08'.5 E

Delete	beacon	34° 34'.0 S	138° 13'.2 E
	beacon	34° 34'.0 S	138° 08'.5 E
	beacon	34° 29'.2 S	138° 08'.4 E
	beacon	34° 26'.8 S	138° 08'.5 E
	beacon	34° 24'.0 S	138° 08'.5 E

**368\* SOUTHERN OCEAN - Light buoy established**

Bureau of Meteorology (AA463375, AA458578 - AA458581), Marine and Safety Tasmania Notice M29/2010 (AA458578)

**Aus 4709 (INT 709) [304/2010]**

Insert	special cylindrical light buoy, <i>Fl.Y.6s</i> , without topmark	46° 43'.4 S	141° 57'.2 E
--------	--	-------------	--------------

**369\* AUSTRALIA - VICTORIA - Western Port - Flinders to Crib Point - Light beacons established***Former Notice - 187(P)/2010 is cancelled*

Victorian Notice 33/2010 (AA462507, AA462878, AA462682 - AA462684)

**Aus 150 [214/2010]**

Insert	special light beacon, <i>Fl. Y.5s</i> , without topmark	38° 28'.01 S	145° 03'.20 E
--------	---	--------------	---------------

**Aus 151 [833/2009]**

Insert	special light beacon, <i>Fl. Y.5s</i> , without topmark	38° 28'.008 S	145° 03'.201 E
	special light beacon, <i>Fl. Y.4s</i> , without topmark	38° 20'.888 S	145° 13'.300 E

**Aus 152 (plan, Crib Point) [1278/2009]**

Insert	special light beacon, <i>Fl. Y.4s</i> , without topmark	38° 20'.888 S	145° 13'.300 E
--------	---	---------------	----------------

**370 AUSTRALIA - Product - Cumulative List of Australian Notices to Mariners - April 2010**

Australian Hydrographic Service (AA433862)

The Cumulative List of Australian Notices to Mariners - April 2010 is issued as an accompanying supplement. It lists all permanent notices affecting charts in the Area of Australian Charting Responsibility published in the preceding two years since Edition 7 of 2008 dated 11 April 2008, and includes Edition 7 of 2010 dated 9 April 2010. It will be revised in October 2010.

A supplement is available on the website which is revised fortnightly.

**371(T)/2010 AUSTRALIA - NEW SOUTH WALES - Botany Bay - Kurnell to La Perouse Point - Cable laying operations**

Date - Until 30 September 2010

VISCAS Corporation (AA464515, AA464516)

Vessels *Steel Hauler, Edi, Piranha, Intrepid* and 2 support vessels are laying power cables between the following positions;

34° 00'.4 S 151° 12'.9 E

34° 00'.3 S 151° 12'.9 E

33° 59'.4 S 151° 13'.9 E.

**Chart temporarily affected - Aus 198 - Aus 199 - AU5198X9****372(T)/2010 AUSTRALIA - NEW SOUTH WALES - Newcastle - Depth information**

Former Notice - 314(T)/2010 is cancelled

Newcastle Port Corporation (AA463723)

Available depths as at 30 March 2010:

<i>Berth</i>	<i>Metres</i>
Western Basin 3	11.4
Western Basin 4	11.4
Eastern Basin 1	11.2
Eastern Basin 2 North of Ch 450	11.5
Eastern Basin 2 South of Ch 450	11.0
Dockyard 2 (Dredge)	4.0
Channel Berth (formerly Dockyard 4)	8.3
Dyke 1	12.8
Dyke 2	12.6
Dyke 4	16.1
Dyke 5	16.1
Dyke 6	6.3
Mayfield 4 Ch 50 to 266	9.5
BHP Wharf 6 to Ch 1050	7.8
Kooragang 2	11.6
Kooragang 2 North Dolphin	11.0
Kooragang 2 South Dolphin	11.0
Kooragang 3	13.0
Kooragang 4	16.5
* Kooragang 5	16.1
* Kooragang 6	16.0
Kooragang 8	13.5
Kooragang 9	TBA
Kooragang Ship Reveal KSR	8.0
* Throsby 1	9.3
Carrington wharf	To be sounded as and when required
Former Tug berth 4	6.5
Elgo wharf	To be sounded as and when required
<i>Channels</i>	
Entrance Approach	17.7
Entrance Channel (18.0m)	18.0
Entrance Channel (17.4m)	17.4
Entrance Channel (16.8m)	16.8
Entrance Channel (16.2m)	16.1
Entrance Channel to Horseshoe	15.2
Horseshoe	15.2
Steelworks Channel to Swinging Basin	15.0
Swinging Basin	15.0
Swinging Basin to Mayfield 4	9.5
* Hunter River South Arm	12.3
Basin Cutting	12.8
Basin Area to Eastern & Western Basin Berths	12.3
Basin Area to 1 Throsby	10.0
Stockton Crossing	3.6

\* Indicates new or revised entry.

**Chart temporarily affected - Aus 207 - Aus 208 - AU5XX208**

**373(T)/2010 AUSTRALIA - QUEENSLAND - Moreton Bay - Ship to ship transfer**

Date - Until 1 July 2010

Maritime Safety Queensland Notice 299(T)/2010 (AA463653)

Ship to ship transfer of LPG will be conducted at STS2 anchorage (27° 16'.5 S 153° 17'.8 E). An exclusion zone (1850 metres radius) exists around transfer operations.

Brisbane Harbour will promulgate the commencement and completion of the transfer operations on VHF Ch 12.

**Chart temporarily affected - Aus 236 - AU428153**

**374(T)/2010 AUSTRALIA - QUEENSLAND - Moreton Bay - Pelican Banks - Wreck**

Maritime Safety Queensland Notice 282(T)/2010 (AA463727)

A stranded wreck marked by a special light buoy, *Fl.Y.3s*, exists in position 27° 34'.59 S 153° 24'.24 E.

Mariners are advised to navigate with caution in the area.

**Chart temporarily affected - Aus 236 - AU428153**

**375(T)/2010 AUSTRALIA - QUEENSLAND - Brisbane River - Quarries Reach - Wreck salvaged**

Former Notice - 269(T)/2010 is cancelled

Maritime Safety Queensland Notice 277/2010 (AA462642)

Cancel this notice on receipt.

**Chart formerly affected - Aus 238 - AU5237X8**

**376(T)/2010 AUSTRALIA - QUEENSLAND - Mooloolaba - Shoaling**

Maritime Safety Queensland Notice 279(T)/2010 (AA462641)

Shoaling, with a least depth of 3.1m (LAT), exists within the entrance and approach channel to Mooloolah River.

Mariners are advised to navigate with caution in the area.

**Chart temporarily affected - Aus 235**

**377(T)/2010 AUSTRALIA - QUEENSLAND - Douglas Shoal - Vessel aground**

Maritime Safety Queensland Notice 315(T)/2010 (AA463840)

The vessel *Shen Neng 1* is aground in position 23° 05'.7 S 151° 39'.2 E (WGS84 datum).

Mariners are advised to keep clear as pollution and salvage operations are in progress.

**Chart temporarily affected - Aus 366 - Aus 367 - Aus 820 - AX 0367E - AX 0820E - AU424151**

**378(T)/2010 AUSTRALIA - QUEENSLAND - Shoalwater Bay - Live firing**

*Former Notice* - 221(T)/2010 is cancelled

*Date* - Until 30 April 2010

Maritime Safety Queensland Notice 236(T)/2010 (AA461374)

Live firing activities will be conducted in the Shoalwater Bay training area during the period 19 to 29 April 2010.

A marine danger area extends to all waters south of the line defined by the following positions:

22° 31'.27 S 150° 29'.21 E

22° 31'.07 S 150° 34'.01 E.

All waters, creeks, beaches and other areas within the declared marine danger area are not available for access.

**Chart temporarily affected - Aus 367 - Aus 822 - AX 0367E - AX 0822E - AU423150**

**379(T)/2010 AUSTRALIA - QUEENSLAND - Hay Point - Harbour works**

*Date* - Until 24 April 2010

Maritime Safety Queensland Notice 283(T)/2010 (AA463869)

Jack-up barge *Sep Desley Anne* is conducting remediation works in the vicinity of DBCT berths No 1 and 2 (21° 15'.15 S 149° 18'.44 E).

Mariners are advised to navigate with caution in the area.

**Chart temporarily affected - Aus 249 - Aus 250 - AX 0249E - AU5250P2**

**380(T)/2010 AUSTRALIA - QUEENSLAND - Seaforth - Light beacon destroyed**

Maritime Safety Queensland Notice 300(T)/2010 (AA463668)

The light beacon, *Fl.R.2.5s* (20° 53'.72 S 148° 58'.69 E), has been destroyed; a port lateral light buoy, *Fl.R.2.5s*, exists in situ.

**Chart temporarily affected - Aus 251 - AU421148**

**381(T)/2010 AUSTRALIA - QUEENSLAND - Acacia Island - Light beacon destroyed**

*Former Notice* - 322(T)/2010 is cancelled

Maritime Safety Queensland Notice 296(T)/2010 (AA463670)

The light beacon, *Fl.R.3s* (20° 52'.40 S 148° 55'.66 E), has been destroyed; a port lateral light buoy, *Fl.R.3s*, exists in situ.

**Chart temporarily affected - Aus 251 - AU421148**

**382(T)/2010 AUSTRALIA - QUEENSLAND - Io Reef - Light beacon destroyed**

Maritime Safety Queensland Notice 284(T)/2010 (AA463870)

The west cardinal light beacon (20° 41'.58 S 149° 07'.70 E) has been destroyed.

**Chart temporarily affected - Aus 251 - Aus 252 - Aus 824 - AU421149**

**383(T)/2010 AUSTRALIA - QUEENSLAND - Whitsundays - Spitfire Rock - Light beacon destroyed**

Maritime Safety Queensland Notice 285(T)/2010 (AA463855)

The west cardinal light beacon (20° 28'.59 S 149° 01'.70 E) has been destroyed.

**Chart temporarily affected - Aus 252 - Aus 254 - Aus 824 - AU421149 - AU5254P1**

**384(T)/2010 AUSTRALIA - QUEENSLAND - Whitehaven Bay - Lagoon Rock - Light beacon destroyed**  
Maritime Safety Queensland Notice 286(T)/2010 (AA463856)

The west cardinal light beacon (20° 16'.03 S 149° 02'.48 E) has been destroyed.

**Chart temporarily affected - Aus 252 - Aus 253 - Aus 824 - Aus 825 - AU421149**

**385(T)/2010 AUSTRALIA - QUEENSLAND - Airlie Beach - Muddy Bay - Wreck**  
Maritime Safety Queensland Notice 303(T)/2010 (AA463827)

A wreck marked by a buoy exists in position 20° 15'.79 S 148° 43'.48 E.

Mariners are advised to navigate with caution in the area.

**Chart temporarily affected - Aus 252 - Aus 253 - Aus 268 - AU5268P2**

**386(T)/2010 AUSTRALIA - QUEENSLAND - Cape Gloucester - Light buoy re-established**  
*Former Notice - 326(T)/2010 is cancelled*  
Maritime Safety Queensland Notice 289(T)/2010 (AA463730)

Cancel this notice on receipt.

**Chart formerly affected - Aus 825 - AU421148**

**387(T)/2010 AUSTRALIA - QUEENSLAND - Mourilyan - Hall Rock - Light beacon unlit**  
Maritime Safety Queensland Notice 298(T)/2010 (AA463594)

The north cardinal light beacon (17° 36'.05 S 146° 07'.96 E) is unlit; a north cardinal light buoy, Q, exists in position 17° 36'.05 S 146° 07'.98 E.

**Chart temporarily affected - Aus 258 - Aus 829 - AU418146 - AU5258P1**

**388(T)/2010 AUSTRALIA - CORAL SEA - Mellish Reef - Light buoy off station northeastwards**  
*Former Notice - 328(T)/2010 is cancelled*  
Australian Bureau of Meteorology (AA464643)

The light buoy, *Fl. Y. 3s* (15° 48'.0 S 158° 31'.0 E), is drifting and currently in position 15° 44'.16 S 156° 03'.37 E (6 Apr 2010).

**Chart temporarily affected - Aus 4604 (INT 604) - AX 4604F - AU130150**

**389(T)/2010 AUSTRALIA - TORRES STRAIT - Stephens Islet - Wreck northwards**  
*Former Notice - 1137(T)/2009 is cancelled*  
Australian Maritime Safety Authority (AA463913)

A wreck, *FV Poseidon*, exists in approximate position 9° 23'.4 S 143° 34'.4 E.

Mariners are advised to navigate with caution in the area.

**Chart temporarily affected - Aus 376 - Aus 377 - Aus 840 - AX 60377 - AU410143**

**390(T)/2010 PAPUA NEW GUINEA - Gulf of Papua - Seismic survey***Date - Until 31 May 2010*

National Maritime Safety Authority PNG Notice 16/2010 (AA463877, AA463876)

RV *Ramform Explorer* and support vessel *Nautika Pride* will be conducting a survey in the area bounded by the following positions:

8° 40'.0 S 144° 42'.0 E  
 8° 49'.5 S 144° 48'.0 E  
 8° 42'.0 S 144° 59'.0 E  
 8° 51'.0 S 145° 04'.0 E  
 8° 48'.5 S 145° 09'.0 E  
 8° 56'.0 S 145° 14'.5 E  
 8° 44'.0 S 145° 33'.0 E  
 8° 26'.5 S 145° 03'.0 E  
 8° 23'.0 S 145° 18'.0 E  
 8° 17'.0 S 145° 25'.5 E  
 8° 01'.0 S 145° 14'.5 E  
 8° 01'.0 S 145° 07'.5 E  
 8° 11'.0 S 144° 53'.0 E.

**Chart temporarily affected - Aus 378 - Aus 502 - AU309144 - AU309145 - AU409145****391(T)/2010 AUSTRALIA - QUEENSLAND - Weipa - Depth information***Former Notice - 1327(T)/2009 is cancelled*

Maritime Safety Queensland Notice 318(T)/2010 (AA464505)

Available depths as at 6 April 2010:

	<i>Metres</i>
* Weipa Approaches	11.1
South Channel	11.1
* Departure Channel	10.8
Cora Bank South Channel	7.3
* Humbug Point Approaches	8.6
Humbug Point Berth	9.5
* Evans Landing	9.6
Lorim Point East	12.3
Lorim Point West	12.3

\* Indicates new or revised entry

**Chart temporarily affected - Aus 4 - AU5XX4P1****392(T)/2010 AUSTRALIA - WESTERN AUSTRALIA - Scott Reef - Scientific instrument southwards***Date - Until 5 May 2010*

CSIRO (AA464567 - AA464569)

A subsurface scientific instrument, 10m below the surface, exists in position 15° 04'.48 S 121° 54'.57 E.

**Chart temporarily affected - Aus 322 - AX 0322F - AU316121**

**393(T)/2010 AUSTRALIA - WESTERN AUSTRALIA - Dampier - Dredging operations***Former Notice - 73(T)/2010 is cancelled*

Dampier Port Authority Notice 11/2010 (AA463724)

The dredges *Cornelis Zanen* and *Queen of the Netherlands*, barge 131 and MT *Cape Mac* are conducting dredging operations in the area bounded by the following positions (WGS84 datum):

20° 32'.4 S 116° 42'.7 E  
 20° 32'.4 S 116° 42'.9 E  
 20° 33'.8 S 116° 43'.2 E  
 20° 36'.3 S 116° 45'.5 E  
 20° 36'.5 S 116° 45'.3 E  
 20° 36'.3 S 116° 44'.8 E  
 20° 33'.3 S 116° 42'.5 E.

The dredge material will be deposited at the offshore spoil ground (20° 23'.0 S 116° 42'.0 E).

All vessels involved in the operations will monitor VHF Ch 11 and Ch 16.

Mariners are advised to navigate with caution in the area.

**Chart temporarily affected - Aus 57 - Aus 58 - Aus 59 - AU5XXX58****394(T)/2010 AUSTRALIA - WESTERN AUSTRALIA - Rankin Bank - Scientific instruments***Former Notice - 679(T)/2009 is cancelled**Date - Until 31 March 2011*

MetOcean Engineers (AA464660)

Scientific instruments exist as follows:

<i>Position</i>	<i>Remarks</i>
19° 51'.96 S 115° 17'.10 E	subsurface
19° 56'.12 S 115° 22'.85 E	subsurface
19° 56'.59 S 115° 22'.87 E	lit buoy, <i>Fl(5)Y.20s</i>
19° 56'.60 S 115° 23'.00 E	5 poly floats
20° 11'.29 S 115° 23'.51 E	subsurface

**Chart temporarily affected - Aus 328 - AU320115****395(T)/2010 AUSTRALIA - WESTERN AUSTRALIA - Barrow Island - Wells northwestwards***Date - Until 23 December 2010*

Chevron Australia Pty Ltd (AA463979)

Wells exist as follows;

<i>Position (WGS84 datum)</i>	<i>Remarks</i>	<i>Depth (metres)</i>
19° 32'.99 S 114° 07'.80 E	Chandon 2	1168
19° 57'.21 S 114° 52'.73 E	Geryon 2	1219
20° 12'.91 S 114° 32'.23 E	Achilles 1	1151
20° 18'.48 S 114° 41'.25 E	Clio 3	971

**Chart temporarily affected - Aus 328 - Aus 415 - Aus 416 - Aus 4708 (INT 708) - AX 0415F - AX 4708F - AU130090 - AU320114 - AU321114**

**396(T)/2010 AUSTRALIA - WESTERN AUSTRALIA - Thevenard Island to Ashburton Road - Scientific instruments**

Former Notice - 77(T)/2010 is cancelled

Date - Until 31 March 2011

MetOcean Engineers (AA464659, AA464660)

Scientific instruments exist as follows:

<i>Position (WGS84 datum)</i>	<i>Remarks</i>
21° 21'.86 S 114° 51'.20 E	5 poly floats
21° 22'.08 S 114° 50'.91 E	lit buoy, <i>Fl(5)Y.20s</i>
21° 22'.08 S 114° 51'.00 E	5 poly floats
21° 25'.95 S 114° 55'.97 E	lit buoy, <i>Fl(5)Y.20s</i>
21° 26'.13 S 114° 55'.85 E	5 poly floats
21° 29'.15 S 115° 00'.86 E	lit buoy, <i>Fl(5)Y.20s</i>
21° 29'.21 S 115° 00'.94 E	5 poly floats
21° 30'.12 S 115° 02'.92 E	lit buoy, <i>Fl(5)Y.20s</i>
21° 31'.40 S 114° 54'.90 E	lit buoy, <i>Fl(5)Y.20s</i>
21° 31'.62 S 115° 07'.04 E	lit buoy, <i>Fl(5)Y.20s</i>
21° 31'.63 S 114° 46'.37 E	lit buoy, <i>Fl(5)Y.20s</i>
21° 31'.66 S 115° 07'.07 E	5 poly floats
21° 35'.13 S 114° 56'.38 E	lit buoy, <i>Fl(5)Y.20s</i>
21° 35'.17 S 114° 56'.38 E	5 poly floats
21° 36'.30 S 115° 04'.94 E	lit buoy, <i>Fl(5)Y.20s</i>
21° 36'.30 S 115° 04'.75 E	5 poly floats
21° 39'.32 S 115° 00'.77 E	lit buoy, <i>Fl(5)Y.20s</i>

**Chart temporarily affected - Aus 64 - Aus 328 - Aus 743 - Aus 744 - AU422114 - AU422115****397(T)/2010 AUSTRALIA - WESTERN AUSTRALIA - Warnbro Sound - Port Kennedy - Harbour works**

Date - Until 1 July 2010

Department of Transport WA Notice 46A/2010 (AA463980)

Harbour works associated with construction of a boat ramp are in progress.

*Barge 24* and support vessel *Fortesque 3* are on site and will display appropriate shapes and lights.Support vessel *Fortesque* will monitor VHF Ch 12 and 16.

An exclusion zone, marked by special light buoys, exists in the area bounded by:

32° 21'.97 S	115° 43'.65 E
32° 21'.85 S	115° 43'.65 E
32° 21'.85 S	115° 43'.84 E
32° 21'.97 S	115° 43'.84 E.

Mariners are advised to navigate with caution in the area.

**Chart temporarily affected - Aus 116 - Aus 755 - AX 0755E - AX 66002 - AU433115****398(T)/2010 AUSTRALIA - WESTERN AUSTRALIA - King George Sound - Light buoys withdrawn**

Date - Until 16 April 2010

Albany Port Authority Notice 1(T)/2010 (AA463981)

No1 light buoy (35° 01'.84 S 117° 56'.62 E (WGS84 datum)) and the Mossie light buoy (35° 02'.75 S 117° 57'.50 E) have been temporarily withdrawn.

**Chart temporarily affected - Aus 109 - Aus 110 - Aus 118 - AX 0110E - AX 0118E - AU5XX109**

**399(T)/2010 AUSTRALIA - SOUTH AUSTRALIA - Spencer Gulf - Middle Bank - Obstruction**  
Department for Transport, Energy and Infrastructure SA Notice 14/2010 (AA464648)

An obstruction marked by a buoy exists in position 33° 39'.42 S 137° 36'.10 E.

Mariners are advised to navigate with caution in the area.

**Chart temporarily affected - Aus 444 - Aus 778**

**400(T)/2010 SOUTHERN OCEAN - Scientific instrument withdrawn**

Date - Until 8 September 2010  
CSIRO (AA464743)

The special light buoy, *Fl. Y. 6s* (46° 18'.94 S 140° 39'.61 E), has been temporarily withdrawn.

**Chart temporarily affected - Aus 4709 (INT 709)**

**401(T)/2010 AUSTRALIA - TEMPORARY AND PRELIMINARY NOTICES**

Australian Hydrographic Service (AA449876)

<i>Notice</i>	<i>Charts affected</i>	<i>Locality and Subject</i>
		<b>BASS STRAIT</b>
<b>1466/2009</b>	Aus 487-AU340145	Drilling operations
<b>188/2010</b>	Aus 357a-487-800-802-AU439146- 439147-439148-440147-440148	Seismic survey
<b>343/2010</b>	Aus 357a-487-AU439148	Drilling operations
		<b>CORAL SEA</b>
		<i>Lihou Reef</i>
<b>653/2001</b>	Aus 614	Shoals
		<i>Mellish Reef</i>
<b>388/2010</b>	Aus 4604-AX 4604F-AU130150	Light buoy off station northeastwards
		<b>NEW SOUTH WALES</b>
		<i>Batemans Bay</i>
<b>317/2006</b>	Aus 191	Shoaling; buoy
		<i>Beecroft Peninsula</i>
<b>1035/2008</b>	Aus 193-807-808-AX 0808E- 60193-70193-AU5XX193	Light buoy off station
		<i>Botany Bay</i>
<b>1113/2009</b>	Aus 198-199-AU5198X9	Harbour works
<b>1114/2009</b>	Aus 198-199-AU5198X9	Pipeline
<b>371/2010</b>	Aus 198-199-AU5198X9	Cable laying operations
		<i>Cape Baily to Ben Buckler</i>
<b>49/2010</b>	Aus 197-808-809-AX 0808E- 0809E-63200-AU434151	Scientific instruments
		<i>Cape Solander</i>
<b>1234/2009</b>	Aus 197-808-AX 0808E- AU434151-435151	Pilot boarding place trial eastwards
		<i>Clarence River</i>
<b>1235/2009</b>	Aus 222-812-813	Harbour works
		<i>Cowan Creek</i>
<b>1177/2009</b>	Aus 204-217-AU5XX204	Refuge Bay-Raft removed
		<i>Georges River</i>
<b>1438/2009</b>	Aus 198-AU5198X9	Light beacon removed; light buoy established
		<i>Green Cape to Ballina Head</i>
<b>708/2008</b>	Aus 195-197-806-807-808-809- 810-811-812-813- AX 0808E-0809E	Scientific instruments

## 401(T)/2010 AUSTRALIA - TEMPORARY AND PRELIMINARY NOTICES (continued)

<i>Notice</i>	<i>Charts affected</i>	<i>Locality and Subject</i>
<b>50/2010</b>	Aus 219	<i>Hastings River</i> Bar crossing; light discontinued
<b>48/2010</b>	Aus 193-807-808-AX 0808E-60193-67192-70193-AU436150-5XX193	<i>Jervis Bay</i> Scientific instruments
<b>1009/2009</b>	Aus 197-200-201-AX 63200-AU5X200E	<i>Manly</i> Scientific instruments
<b>866/2008</b>	Aus 207-208-361-362-809-AX 0809E-AU433151-5XX208	<i>Newcastle</i> Obstructions
<b>773/2009</b>	Aus 207-208-AU5XX208	South Arm-Harbour works; dredging operations
<b>372/2010</b>	Aus 207-208-AU5XX208	Depth information <i>Point Long Nose</i>
<b>1036/2008</b>	Aus 197-198-808-AX 0808E-AU5198X9	Offshore works
<b>454/2006</b>	Aus 202-AU5X200W	<i>Port Jackson</i> Shoaling
<b>1439/2009</b>	Aus 200-203-AU5X200W	Homebush Bay-Scientific instruments; piles; silt curtain
<b>167/2010</b>	Aus 200-202-AU5X200E	Darling Point-Scientific instrument <i>Port Kembla</i>
<b>864/2008</b>	Aus 195-361-808-AX 0808E-AU435150-5XX194	Obstructions
<b>1281/2009</b>	Aus 194-AU5XX194	Depth information <i>Port Stephens</i>
<b>658/2009</b>	Aus 209-AU433152	Shoaling <i>Shoalhaven Bight</i>
<b>496/2009</b>	Aus 807-808-AX 0808E-AU435150	Unexploded ordnance
<b>NORTHERN TERRITORY</b>		
<b>662/2007</b>	Aus 28	<i>Darwin</i> Depth information
<b>790/2009</b>	Aus 20	<i>Melville Island</i> Reef delineation
<b>950/2004</b>	Aus 309-311-315	<i>Troubadour Shoals</i> Scientific instruments
<b>QUEENSLAND</b>		
<b>460/2008</b>	Aus 255	<i>Abbot Point</i> Light buoy established
<b>664/2008</b>	Aus 255-826	Scientific instruments
<b>1044/2008</b>	Aus 255-AU5XX255	Harbour works
<b>1152/2008</b>	Aus 255-AU5XX255	Depth information <i>Acacia Island</i>
<b>381/2010</b>	Aus 251-AU421148	Light beacon destroyed <i>Airlie Beach</i>
<b>819/2008</b>	Aus 252-253-268-AU5268P2	Light buoys established
<b>1097/2008</b>	Aus 252-253-268-AU5268P2	Wreck
<b>214/2009</b>	Aus 252-253-268-AU5268P2	Wreck
<b>667/2009</b>	Aus 252-253-268-AU5268P2	Abel Point-Wreck
<b>385/2010</b>	Aus 252-253-268-AU5268P2	Muddy Bay-Wreck <i>Albatross Bay</i>
<b>729/2009</b>	Aus 4-701-AU413141	Scientific instruments <i>Allingham</i>
<b>1288/2009</b>	Aus 827-828-AU419146	Light removed <i>Arkwright Point</i>
<b>1187/2009</b>	Aus 365	Scientific instrument <i>Arlington Reef</i>
<b>968/2009</b>	Aus 830-AX 6027S-AU417145	Wreck

## 401(T)/2010 AUSTRALIA - TEMPORARY AND PRELIMINARY NOTICES (continued)

<i>Notice</i>	<i>Charts affected</i>	<i>Locality and Subject</i>
<b>325/2010</b>	Aus 252-254-825-AU421148-5254P2	<i>Bird Island to Groper Point</i> Nav aids
<b>845/2009</b>	Aus 252-254-AU5254P2	<i>Black Island</i> Light beacon destroyed
<b>1090/2006</b>	Aus 238	<i>Brisbane River</i> Lights altered
<b>830/2007</b>	Aus 238	Cameron Rocks-Light unlit
<b>1132/2007</b>	Aus 237-238	Lytton Reach-Mooring blocks; pipeline
<b>751/2008</b>	Aus 237	Fisherman Islands-Harbour works
<b>810/2008</b>	Aus 237-238-AU5237X8	Depth information
<b>814/2008</b>	Aus 238-AU5237X8	Newstead-Harbour works
<b>720/2009</b>	Aus 238-AU5237X8	Town Reach-Kangaroo Point-Wreck
<b>1238/2009</b>	Aus 238-AU5237X8	Lytton Reach-Harbour works
<b>1377/2009</b>	Aus 238-AU5237X8	Kangaroo Point-Harbour works
<b>127/2010</b>	Aus 236-237-AU428153-5237X8	Old Bar Cutting-Light beacon destroyed; light buoy established
<b>268/2010</b>	Aus 238-AU5237X8	Quarries Reach to Parker Island Reach-Harbour works
<b>657/2008</b>	Aus 242	<i>Bundaberg</i> Burnett River-Sea Reach-Light beacon destroyed
<b>1128/2009</b>	Aus 242-AU5XX242	Town Reach-Obstruction
<b>316/2010</b>	Aus 242-243-AU5XX242	Depth information
<b>136/2010</b>	Aus 263-AU5262X4	<i>Cairns</i> Harbour works
<b>327/2010</b>	Aus 262-263-264-830-AX 63262-AU417145-5262X4	Depth information
<b>620/2009</b>	Aus 235	<i>Caloundra</i> Rock outcrop
<b>114/2008</b>	Aus 826-827	<i>Cape Bowling Green</i> Scientific instrument
<b>1386/2009</b>	Aus 826-827-AU320147	Light buoy off station
<b>134/2010</b>	Aus 256-827-AU320147	<i>Cape Cleveland</i> Scientific instrument
<b>787/2009</b>	Aus 831-832-AU415145	<i>Cape Flattery</i> Wreck
<b>429/2009</b>	Aus 236-364-814	<i>Cape Moreton</i> Obstruction southeastwards
<b>430/2009</b>	Aus 235-364-365-814	Obstructions
<b>94/2009</b>	Aus 826-827-AU320147	<i>Cape Upstart</i> Wreck northwards
<b>755/2008</b>	Aus 371-372-827-828	<i>Cassady</i> Light beacon destroyed
<b>876/2008</b>	Aus 270-AU5270P6	<i>Cooktown</i> Depth information
<b>1136/2009</b>	Aus 270-AU5270P6	Light buoy repositioned; light buoy established
<b>175/2010</b>	Aus 249-823-AX 0249E-0823E-AU422149	<i>Coral Point</i> Light beacon destroyed
<b>726/2009</b>	Aus 830-AU417145	<i>Double Island</i> Scientific instrument
<b>377/2010</b>	Aus 366-367-820-AX 0367E-0820E-AU424151	<i>Douglas Shoal</i> Vessel aground
<b>222/2010</b>	Aus 249-250-823-AX 0249E-0823E-AU422149-5250P1	<i>Freshwater Point to Slade Island</i> Scientific instruments

## 401(T)/2010 AUSTRALIA - TEMPORARY AND PRELIMINARY NOTICES (continued)

<i>Notice</i>	<i>Charts affected</i>	<i>Locality and Subject</i>
		<i>Gladstone</i>
<b>721/2009</b>	Aus 245-AU5244X5	Scientific instruments
<b>959/2009</b>	Aus 246-819-AU424151	South Channel-Scientific instrument
<b>960/2009</b>	Aus 244-245-AU5244X5	Targinie Channel-Light buoy withdrawn
<b>1188/2009</b>	Aus 245-819-AU424151-5244X5	North Passage Island-Scientific instruments
<b>1283/2009</b>	Aus 244-245-819-AU424151-5244X5	Scientific instruments
<b>1445/2009</b>	Aus 246-AU424151	Boyne Cutting-Light beacon destroyed; light buoy established
<b>1446/2009</b>	Aus 246-AU424151	Golding Cutting-Obstruction
<b>170/2010</b>	Aus 246-819-AU424151	Obstructions
<b>171/2010</b>	Aus 246-AU424151	Light beacons destroyed
<b>172/2010</b>	Aus 244-245-AU5244X5	Auckland Channel-Light buoy withdrawn
<b>220/2010</b>	Aus 244-245-246-AU424151-5244X5	Depth information
<b>271/2010</b>	Aus 245-AU5244X5	Drilling operations
		<i>Gold Coast Seaway</i>
<b>836/2009</b>	Aus 230	Shoaling
<b>837/2009</b>	Aus 230	Shoaling
		<i>Goold Island</i>
<b>1099/2008</b>	Aus 828-AU419146	Wreck
		<i>Great Keppel Island</i>
<b>174/2010</b>	Aus 366-367-819-820-AX 0367E-0820E-AU424150	Light beacon destroyed
		<i>Great Sandy Strait</i>
<b>1444/2009</b>	Aus 240-817	Light buoys established
		<i>Halifax Bay</i>
<b>226/2010</b>	Aus 256-827-AU419146-420146	Light buoys established
		<i>Hay Point</i>
<b>964/2009</b>	Aus 249-250-AU5250P2	Depth information
<b>965/2009</b>	Aus 249-250-AU5250P2	Depth information
<b>1243/2009</b>	Aus 249-250-823-AX 0249E-0823E-AU422149-5250P2	Scientific instruments
<b>59/2010</b>	Aus 249-823-AX 0249E-0823E-AU422149	Anchorage established
<b>379/2010</b>	Aus 249-250-AX 0249E-AU5250P2	Harbour works
		<i>Hay Point to Bailey Islet</i>
<b>176/2010</b>	Aus 249-250-823-824-AX 0249E-0823E-AU422149-5250P2	Scientific instruments
		<i>Heron Island</i>
<b>111/2008</b>	Aus 819	Scientific instruments
		<i>Hesket Rock</i>
<b>318/2010</b>	Aus 251-823-824-AX 0823E-AU421149	Light beacon destroyed
		<i>Hook Island</i>
<b>324/2010</b>	Aus 252-AU421148	Light beacon destroyed
		<i>Hook Reef</i>
<b>930/2007</b>	Aus 254-825	Beacon destroyed
		<i>Io Reef</i>
<b>382/2010</b>	Aus 251-252-824-AU421149	Light beacon destroyed
		<i>Karamea Bank</i>
<b>166/2009</b>	Aus 367-820-AU323151	Wreck
		<i>Karumba</i>
<b>937/2007</b>	Aus 6	Obstruction; buoy
<b>1051/2008</b>	Aus 6	Light beacon withdrawn
<b>67/2010</b>	Aus 6	Shoaling; light buoys established
<b>228/2010</b>	Aus 6	Depth information
		<i>Kirra Point</i>
<b>391/2008</b>	Aus 813-814	Offshore works
		<i>Laguna Quays</i>
<b>1052/2006</b>	Aus 252	Reduced depth

## 401(T)/2010 AUSTRALIA - TEMPORARY AND PRELIMINARY NOTICES (continued)

Notice	Charts affected	Locality and Subject
317/2010	Aus 249-823-AX 0249E-0823E-AU422149	<i>Leeper Reef</i> Light buoy off station
132/2010	Aus 247-819-820-AU424151	<i>Lisa Jane Shoals</i> Scientific instrument
118/2008	Aus 832	<i>Lizard Island</i> Scientific instruments
463/2008	Aus 259	<i>Lucinda</i> Light buoy repositioned
724/2009	Aus 250-AU5250P1	<i>Mackay</i> Harbour works
966/2009	Aus 250-AU5250P1	Depth information
376/2010	Aus 235	<i>Mooloolaba</i> Shoaling
102/2007	Aus 235-236	<i>Moreton Bay</i> Light sector partially undefined.
694/2007	Aus 235-236	Brisbane River-Depth information and keel clearances
733/2007	Aus 236	Tangalooma Point-Wreck: buoy
774/2007	Aus 236	Scarborough-Shoaling
710/2008	Aus 235-236	Spitfire Channel-Light buoys established
750/2008	Aus 236	Banana Bank-Light beacon damaged
84/2009	Aus 236	Rous Channel-Shoaling
87/2009	Aus 236-AU5237X8	Wynnum-Shoaling
321/2009	Aus 236-AU5237X8	Manly-Light beacon established
377/2009	Aus 235-236	Skirmish Passage-Wreck
380/2009	Aus 236-814	Bramble Bay-Bridge construction
661/2009	Aus 236	Redland Bay-Light beacon destroyed
662/2009	Aus 236	Cleveland Point-Light beacon unlit
1323/2009	Aus 236	Deception Bay-Wreck
1441/2009	Aus 236-AU428153	Lamb Island-Clarkes Point-Light beacon destroyed; light buoy established
1443/2009	Aus 236-AU428153	Light beacon destroyed; light buoy established
124/2010	Aus 236-AU428153	Ship to ship transfer
125/2010	Aus 236-AU428153	Light beacon destroyed; light buoys established
128/2010	Aus 236-AU428153	Redcliffe-Scientific instrument southeastwards
169/2010	Aus 236	Russell Island-Wreck
315/2010	Aus 236-AU428153	Green Island-Light beacon destroyed
373/2010	Aus 236-AU428153	Ship to ship transfer
374/2010	Aus 236-AU428153	Wreck
786/2009	Aus 258-AU5258P1	<i>Mourilyan</i> Depth information
387/2010	Aus 258-829-AU418146-5258P1	Light beacon unlit
135/2010	Aus 258-AU5258P1	<i>Mourilyan Harbour</i> Harbour works
1244/2009	Aus 825-826-AU320148	<i>Nares Rock</i> Light unlit
1449/2009	Aus 822-823-AX 0822E-0823E-AU322150	<i>Percy Isles</i> Scientific instrument
1244/2006	Aus 268	<i>Pioneer Bay</i> Airlie Beach-Harbour works; light buoys.
663/2008	Aus 252-253-268	Dredging operations
123/2010	Aus 230-813-814	<i>Point Danger to Point Lookout</i> Scientific instruments
168/2010	Aus 236-814-AU428153	<i>Point Lookout</i> Wreck northwestwards
1019/2009	Aus 265-AU5247P1	<i>Port Alma</i> Depth information

## 401(T)/2010 AUSTRALIA - TEMPORARY AND PRELIMINARY NOTICES (continued)

Notice	Charts affected	Locality and Subject
		<i>Port Douglas</i>
117/2008	Aus 270	Depth information
1135/2009	Aus 270-AU5270P1	Light beacon withdrawn; light buoy established
		<i>Pumicestone Channel</i>
663/2009	Aus 235	Light buoy off station
		<i>Rocky Point</i>
170/2009	Aus 829-AU418146	Light beacon withdrawn
		<i>Saumarez Reefs</i>
665/2009	Aus 426-612	Wreck
		<i>Schooner Rock</i>
319/2010	Aus 251-824-AU421149	Light beacon destroyed
		<i>Seaforth</i>
380/2010	Aus 251-AU421148	Light beacon destroyed
		<i>Shoal Point</i>
321/2010	Aus 249-251-823-824-AX 0249E-0823E-AU422149	Light buoy off station
		<i>Shoalwater Bay</i>
378/2010	Aus 367-822-AX 0367E-0822E-AU423150	Live firing
		<i>Shute Bay</i>
1451/2009	Aus 252-253-AU421148	Obstructions
		<i>Skardon River</i>
671/2006	Aus 701	Shoaling
890/2007	Aus 701	Shoaling
		<i>Slade Island</i>
320/2010	Aus 249-250-AX 0249E-AU422149-5250P1	Light buoy off station southeastwards
		<i>Southport</i>
777/2009	Aus 230	Harbour works
		<i>Surprise Rock</i>
329/2009	Aus 252-253-824-AU421149	Light beacon destroyed
		<i>Swains Reef</i>
311/2008	Aus 367-426	Scientific instruments
		<i>Thread Shoal to Myrmidon Reef</i>
116/2008	Aus 828	Scientific instruments
		<i>Thursday Island</i>
1025/2009	Aus 293-299-AU5XX299	Depth information
		<i>Townsville</i>
1248/2008	Aus 256-257-AU5XX257	Light buoy
1133/2009	Aus 257-AU5XX257	Ross Creek-Light beacons withdrawn; light buoys established
62/2010	Aus 257-AU5XX257	Ross River-Harbour works
63/2010	Aus 256-257-AU5XX257	Depth information
		<i>Upolu Reef</i>
446/2009	Aus 830-AU417145	Obstructions
		<i>Weipa</i>
66/2010	Aus 4	Obstruction
391/2010	Aus 4-AU5XX4P1	Depth information
		<i>Whitehaven Bay</i>
384/2010	Aus 252-253-824-825-AU421149	Light beacon destroyed
		<i>Whitsunday Island</i>
323/2010	Aus 252-253-AU421149	Whitehaven Beach-Light beacon destroyed
		<i>Whitsundays</i>
383/2010	Aus 252-254-824-AU421149-5254P1	Spitfire Rock-Light beacon destroyed
		<i>Yorkeys Knob</i>
1387/2009	Aus 262-830-AX 6027S-63262-AU417145-5262X4	Light buoy established

## 401(T)/2010 AUSTRALIA - TEMPORARY AND PRELIMINARY NOTICES (continued)

<i>Notice</i>	<i>Charts affected</i>	<i>Locality and Subject</i>
<b>SOUTH AUSTRALIA</b>		
		<i>Barker Inlet</i>
<b>830/2008</b>	Aus 130-780-781	Shoaling
<b>236/2010</b>	Aus 130-AU435138	Shoaling
		<i>Glenelg</i>
<b>1161/2008</b>	Aus 125	Shoaling
<b>458/2009</b>	Aus 125-781	Restricted area; light buoys
		<i>Largs Bay</i>
<b>456/2009</b>	Aus 130-138-780-781-AU435138-5137X8	Light buoy off station
		<i>Murray River</i>
<b>520/2009</b>	Aus 347	Dredging operations; exclusion zone
		<i>Neptune Islands</i>
<b>1208/2008</b>	Aus 343-AX 0343E	Scientific instrument
		<i>North Neptunes</i>
<b>1396/2009</b>	Aus 343-345-AX 0343E	Scientific instruments
		<i>Point Lowly</i>
<b>455/2009</b>	Aus 136-444-778	Light unreliable
		<i>Port Adelaide</i>
<b>720/2008</b>	Aus 137	Shoaling
		<i>Port Augusta</i>
<b>265/2008</b>	Aus 344-778	Light beacon destroyed
<b>415/2008</b>	Aus 344-778	Two Hummock Point-Light beacon altered
		<i>Port Stanvac</i>
<b>335/2009</b>	Aus 125-780-781	Scientific instrument
<b>572/2009</b>	Aus 125-780-781	Pipeline
<b>87/2010</b>	Aus 125-780-781	Offshore works
		<i>Port Willunga</i>
<b>921/2009</b>	Aus 780	Light buoy off station
		<i>Spencer Gulf</i>
<b>399/2010</b>	Aus 444-778	Obstruction
		<i>Wallaroo</i>
<b>176/2009</b>	Aus 777	Depth information
		<i>Whidbey Isles to Kangaroo Island</i>
<b>1082/2009</b>	Aus 342-343-345-346-444-AX 0343E-AU336135	Scientific instruments
		<i>Wirrina Cove</i>
<b>268/2008</b>	Aus 125	Shoaling
<b>TASMAN SEA</b>		
		<i>Norfolk Island</i>
<b>51/2010</b>	Aus 609-AU430167	Wreck
<b>TASMANIA</b>		
		<i>Bell Bay</i>
<b>1086/2009</b>	Aus 167-168-AU5167X8	Light beacon destroyed
		<i>Burnie</i>
<b>922/2009</b>	Aus 163	Depth information
		<i>Devonport</i>
<b>979/2009</b>	Aus 164-AU5164P1	Depth information
		<i>Furneaux Group</i>
<b>922/2005</b>	Aus 179-800	Shoaling
		<i>Georges Bay</i>
<b>131/2008</b>	Aus 169	Shoaling
<b>91/2010</b>	Aus 169	Wreck
		<i>Hobart</i>
<b>509/2008</b>	Aus 171-172	Obstructions
<b>522/2009</b>	Aus 172	Depth information
		<i>Huon River</i>
<b>340/2010</b>	Aus 173-AU444146	Marine farm works

## 401(T)/2010 AUSTRALIA - TEMPORARY AND PRELIMINARY NOTICES (continued)

<i>Notice</i>	<i>Charts affected</i>	<i>Locality and Subject</i>
<b>88/2010</b>	Aus 171-173-AU444147	<i>Little Oyster Cove</i> Harbour works; light beacon discontinued
<b>1142/2009</b>	Aus 167-799-AU442146-5167X8	<i>Port Dalrymple</i> Scientific instruments
<b>143/2010</b>	Aus 167-AU5167X8	Light buoy off station <i>River Derwent</i> Scientific instruments
<b>833/2008</b>	Aus 171-173-174-795	Buoy established
<b>795/2009</b>	Aus 171	Geilston Bay-Wreck
<b>185/2010</b>	Aus 172-AU5XX172	<i>River Tamar</i> Port Dalrymple-Reclamation works
<b>1085/2009</b>	Aus 167-799-AU442146-5167X8	Windermere-Obstruction
<b>92/2010</b>	Aus 168-AU5167X8	<i>Spring Bay</i> Depth information
<b>460/2009</b>	Aus 175	<i>Storm Bay</i> Scientific instruments
<b>274/2009</b>	Aus 795-796	Scientific instruments
<b>1341/2009</b>	Aus 795-796-AU444147	Scientific instruments
<b>279/2010</b>	Aus 796-AU444147	Scientific instruments
<b>TIMOR SEA</b>		
<b>69/2010</b>	Aus 308-309-310-311-312-313-314-315-316-317-318-321-322-442-721-725-4720-4721-4722-AX 0309F-0310F-0311F-0312F-0313F-0314F-0315F-0317F-0321F-0322F-4720F-4721F-4722F-72309-AU130120-310127-310128-310130-311125-311126-311127-311128-311130-311131-311132-312122-312123-312124-312125-312126-312127-312128-313121-313123-313124-313125-313126-313127-313128-314124-314125-314127-314128-411129-412129-413129-414126	Seismic survey
<b>982/2008</b>	Aus 314-319-4721-4722-AU313124	Drilling operations <i>Sahul Banks</i> Scientific instruments
<b>476/2006</b>	Aus 312	Navaid; racon non operational
<b>223/2009</b>	Aus 312-4721-AX 0312F-4721F-AU311126	
<b>TORRES STRAIT</b>		
<b>65/2010</b>	Aus 293-299-AU311142-5XX299	<i>Madge Reef</i> Light beacon unlit
<b>389/2010</b>	Aus 376-377-840-AX 60377-AU410143	<i>Stephens Islet</i> Wreck northwards
<b>VICTORIA</b>		
<b>1300/2009</b>	Aus 801-AU439145	<i>Anderson Inlet</i> Shoaling
<b>1301/2009</b>	Aus 181-182-AU439146	<i>Barry Beach</i> Shoaling
<b>1467/2009</b>	Aus 143-AU439144	<i>Barwon River</i> Lights trial
<b>1468/2009</b>	Aus 143-788-AU439144	Bridge construction; exclusion zones; light buoys established
<b>1213/2008</b>	Aus 181-357A-802-AU439146	<i>Corner Inlet</i> Shoaling

## 401(T)/2010 AUSTRALIA - TEMPORARY AND PRELIMINARY NOTICES (continued)

<i>Notice</i>	<i>Charts affected</i>	<i>Locality and Subject</i>
<b>741/2009</b>	Aus 182	Lakes Entrance Harbour works
<b>458/2007</b>	Aus 357a	Ninety Mile Beach Obstructions
<b>800/2009</b>	Aus 181-182-AU439146	Port Albert Shoaling
<b>1303/2009</b>	Aus 181-182-AU439146	Harbour works Port Melbourne
<b>897/2007</b>	Aus 154	Shoaling
<b>1344/2009</b>	Aus 154-155-AU5XX154	Port Phillip-Dredging operations Port Phillip
<b>796/2007</b>	Aus 143-158	South channel-Obstruction
<b>797/2007</b>	Aus 143-158	South Channel-Obstruction
<b>997/2007</b>	Aus 154	Station Pier-Shoaling
<b>223/2008</b>	Aus 143-154-155	Port Melbourne-Princes Pier-Harbour works
<b>893/2008</b>	Aus 154-AU5XX154	River Yarra-Light beacon withdrawn
<b>230/2009</b>	Aus 154-AU5XX154	Depth information
<b>465/2009</b>	Aus 153-157-AU5XX153	Geelong-Depth information
<b>582/2009</b>	Aus 153-157-AU5XX153	Corio Quay-Harbour works
<b>926/2009</b>	Aus 154-AU5XX154	Port Melbourne-Swanson Dock-Harbour works
<b>1036/2009</b>	Aus 154-AU5XX154	River Yarra-Harbour works
<b>1089/2009</b>	Aus 154-155-AU438144-5XX154	Williamstown-Harbour works
<b>1252/2009</b>	Aus 154-AU5XX154	River Yarra-South Wharf-Harbour works
<b>1405/2009</b>	Aus 143-157-AU439144	Point Richards-Harbour works
<b>1469/2009</b>	Aus 154-AU5XX154	Port Melbourne-River Yarra-Harbour works Port Welshpool
<b>1302/2009</b>	Aus 181-AU439146	Middle Ground Channel-Beacon destroyed Western Port
<b>514/2008</b>	Aus 150-151	Phillip Island-Shoaling northwards
<b>1346/2009</b>	Aus 150-801-AU439145	Wonthaggi-Scientific instrument
<b>280/2010</b>	Aus 150-151-AU439145	Phillip Island-McHaffies Point-Light altered
<b>342/2010</b>	Aus 150-AU5150P3	Rhyll-Harbour works
<b>WESTERN AUSTRALIA</b>		
<i>Albany</i>		
<b>729/2006</b>	Aus 109	Light beacon; light buoy Alkimos Reef
<b>1337/2009</b>	Aus 334-754-AX 0334E-0754E-66002-AU432115	Scientific instrument
<b>82/2010</b>	Aus 334-754-AX 0334E-0754E-66002-AU432115	Harbour works; exclusion zone
<i>Barrow Island</i>		
<b>75/2010</b>	Aus 62-742-AU421115	Harbour works; exclusion zone
<b>76/2010</b>	Aus 62-742-743-AU421115	Scientific instruments
<b>139/2010</b>	Aus 62-742-743-AU421115	Scientific instruments
<b>395/2010</b>	Aus 328-415-416-4708-AX 0415F-4708F-AU130090-320114-321114	Wells northwestwards
<i>Bessieres Island</i>		
<b>1464/2009</b>	Aus 328-415-416-744-4708-AX 0415F-4708F-AU130090-422114	FPSO off station northwestwards
<i>Binningup</i>		
<b>85/2010</b>	Aus 115-334-335-755-AX 0334E-0755E-AU434115	Offshore works; exclusion zone
<i>Broome</i>		
<b>893/2007</b>	Aus 50	Wreck
<b>849/2009</b>	Aus 50-324	Gantheaume Bay-Obstruction , light buoy
<b>1079/2009</b>	Aus 50-51-324-AU418122	Electronic navigation aid trial
<i>Browse Island</i>		
<b>100/2009</b>	Aus 319-AX 0319F-AU314123	Scientific instrument northwestwards
<b>179/2010</b>	Aus 319-AX 0319F-AU314123	Scientific instruments

## 401(T)/2010 AUSTRALIA - TEMPORARY AND PRELIMINARY NOTICES (continued)

<i>Notice</i>	<i>Charts affected</i>	<i>Locality and Subject</i>
		<i>Dampier</i>
<b>1034/2007</b>	Aus 57-58-59	Depth information
<b>218/2008</b>	Aus 57-58-59	Anchorage
<b>259/2008</b>	Aus 58-59	Light buoy established
<b>260/2008</b>	Aus 57-58-59	Dredging operations; exclusion zone
<b>911/2009</b>	Aus 57-58-741	Obstruction
<b>1248/2009</b>	Aus 57-58-59-AU5XXX58	Light beacons to be established
<b>137/2010</b>	Aus 57-58-59	Pipeline established
<b>230/2010</b>	Aus 57-58-59-741-742-AU421116-5XXX58	Back fill operations
<b>333/2010</b>	Aus 327-741-742-AU421116	Rock laying operations northwestward
<b>393/2010</b>	Aus 57-58-59-AU5XXX58	Dredging operations
		<i>Dampier Archipelago</i>
<b>523/2004</b>	Aus 327-415	Scientific instruments northwestwards
		<i>Emu Point</i>
<b>764/2008</b>	Aus 110-118-759	Light
		<i>Esperance</i>
<b>337/2010</b>	Aus 119-AU5119P1	Depth information
<b>338/2010</b>	Aus 119-AU434121-5119P1	Light beacons destroyed
		<i>Exmouth Plateau</i>
<b>1296/2009</b>	Aus 329-415-416-4708-AX 0415F-4708F-AU130090	Obstruction
<b>231/2010</b>	Aus 415-4708-AX 0415F-4708F-AU130090	Seismic survey
		<i>Fremantle</i>
<b>470/2008</b>	Aus 112-113-AX 63112	Obstruction; submarine pipeline; light buoys
<b>273/2009</b>	Aus 112-754-AX 0754E-63112-66002	Anchorage
<b>793/2009</b>	Aus 113-AU5XX113	Depth information
<b>1393/2009</b>	Aus 112-113-114-117-AX 63112-70117-AU5111X4-5XX113	Navais altered
<b>83/2010</b>	Aus 112-113-AX 63112-AU5XX113	Harbour works
<b>142/2010</b>	Aus 112-113-117-AX 63112-70117-AU5XX113	Obstruction
		<i>Geographe Bay</i>
<b>518/2009</b>	Aus 334-335-755-756-AX 0334E-0755E-AU434115	Scientific instrument
		<i>Geraldton</i>
<b>946/2008</b>	Aus 81	Depth information
<b>451/2009</b>	Aus 81-751	Light buoy off station
<b>570/2009</b>	Aus 81	Light buoy withdrawn
		<i>Irvine Island</i>
<b>276/2010</b>	Aus 40-732-733	Scientific instruments
		<i>King George Sound</i>
<b>333/2009</b>	Aus 109-110-118-AU5XX109	Scientific instruments
<b>398/2010</b>	Aus 109-110-118-AX 0110E-0118E-AU5XX109	Light buoys withdrawn
		<i>Kwinana</i>
<b>453/2009</b>	Aus 114-117-AX 70117-AU5111X4	Light unlit
		<i>Lacepede Channel to Cape Boileau</i>
<b>180/2010</b>	Aus 323-324-AU418122	Scientific instruments
		<i>Muiron Islands</i>
<b>1392/2009</b>	Aus 328-329-744-AU422114	Light buoy established northwestwards
		<i>North Muiron Island to Locker Island</i>
<b>182/2010</b>	Aus 328-329-743-744-AU422114	Scientific instruments
		<i>North Rankin</i>
<b>1329/2009</b>	Aus 327-415-741-4722-AX 0415F-4722F-AU130090	Scientific instruments

## 401(T)/2010 AUSTRALIA - TEMPORARY AND PRELIMINARY NOTICES (continued)

<i>Notice</i>	<i>Charts affected</i>	<i>Locality and Subject</i>
		<i>North West Cape</i>
<b>914/2009</b>	Aus 64-328-329-415-416-743-744-AX 0415F-AU321114-422114	Scientific instruments
<b>1335/2009</b>	Aus 328-329-415-416-744-4708-AX 0415F-4708F-AU130090-422114	Scientific instruments northwestwards
<b>140/2010</b>	Aus 64-743-744-AU422114	<i>Onslow</i> Drilling operations
<b>792/2009</b>	Aus 334-754-AX 0334E-0754E-0755E-66002-AU332114-432115-433115	<i>Perth</i> Scientific instruments westwards
<b>827/2008</b>	Aus 54	<i>Port Hedland</i> Lights established
<b>331/2009</b>	Aus 52-53-54	Harbour works
<b>332/2009</b>	Aus 52-53-54	Dredging operations
<b>677/2009</b>	Aus 54-AU5XXX54	Light established
<b>1080/2009</b>	Aus 52-54-AU5XXX52	Depth information
<b>330/2010</b>	Aus 52-53-54-739-740-AU5XXX52	Scientific instruments
<b>334/2010</b>	Aus 327-328-AU320115	<i>Rankin Bank</i> Scientific instruments
<b>394/2010</b>	Aus 328-AU320115	Scientific instruments
<b>332/2010</b>	Aus 57-58-59-327-328-741-742-AU421115-421116-5XXX58	<i>Rankin Bank to Dampier</i> Scientific instruments
<b>138/2010</b>	Aus 327-742-AU421116	<i>Regnard Bay</i> Scientific instrument
<b>277/2010</b>	Aus 742-AU421116	Scientific instruments
<b>392/2010</b>	Aus 322-AX 0322F-AU316121	<i>Scott Reef</i> Scientific instrument southwards
<b>1462/2009</b>	Aus 322-323-324-415-AX 0322F-0415F-AU315121-318121	<i>Scott Reef to James Price Point</i> Scientific instruments
<b>396/2010</b>	Aus 64-328-743-744-AU422114-422115	<i>Thevenard Island to Ashburton Road</i> Scientific instruments
<b>79/2010</b>	Aus 63-64-328-415-416-742-743-AX 0415F-AU321114-422115	<i>Thevenard Island to Exmouth Plateau</i> Scientific instruments
<b>397/2010</b>	Aus 116-755-AX 0755E-66002-AU433115	<i>Warnbro Sound</i> Harbour works
<b>1052/2008</b>	Aus 40-732-733	<i>Yampi Sound</i> Parakeet Channel-Comber Rock-Buoy off station
<b>EAST TIMOR</b>		
<b>727/2006</b>	Aus 901	<i>Dili</i> Point Laguebada-Light unlit
<b>309/2005</b>	Aus 311-312-313-4721	<i>Pulau Jaco</i> Light unlit
<b>INDIAN OCEAN</b>		
<b>1135/2006</b>	Aus 4071	Scientific instruments
<b>800/2005</b>	Aus 607	Light beacon
<b>1458/2009</b>	Aus 4070-4071	<i>Sumatera</i> Scientific instruments westwards
<b>PACIFIC OCEAN</b>		
<b>1471/2009</b>	Aus 399-4622-AU306156	Scientific instruments

## 401(T)/2010 AUSTRALIA - TEMPORARY AND PRELIMINARY NOTICES (continued)

<i>Notice</i>	<i>Charts affected</i>	<i>Locality and Subject</i>
		<b>PAPUA NEW GUINEA</b>
		<i>Bougainville Island</i>
<b>609/2008</b>	Aus 399-683-4622	Lights unlit
		<i>Gulf of Papua</i>
<b>390/2010</b>	Aus 378-502-AU309144-309145-409145	Seismic survey
		<i>Kimbe Island</i>
<b>406/2008</b>	Aus 547-4622	Light unlit
		<i>Madang</i>
<b>967/2005</b>	Aus 646	Horizontal datum anomaly
		<i>Port Moresby</i>
<b>404/2008</b>	Aus 379-505-4620	Fish aggregation device southwards
		<i>Rantan Island</i>
<b>1102/2008</b>	Aus 399-AU407155	Light unlit
		<b>SOUTHERN OCEAN</b>
<b>400/2010</b>	Aus 4709	Scientific instrument withdrawn

## HYDROGRAPHIC REPORTS

<i>Locality</i>	<i>Report</i>	<i>Ship/Authority</i>	<i>Observer</i>
AUS- AHS product	Aus Chart Index		N Whalen

**NAVIGATION WARNINGS**

The following radio messages have been received during the period to 9 April 2010. Signal copies of these messages may be destroyed. It is recommended that the reprint of Navigational Warnings should be kept in a file or a book divided into areas. Cancellation should be made on receipt of signals and reprints.

Rigs on location other than those listed in the latest Section III summary are the subject of Radio Navigational Warnings. Rigs in transit will not be the subject of Warnings.

**AUSCOAST WARNING**

- 080 REEFVTS service permanently relocated from Hay Point VTS centre to Townsville VTS centre. REEFVTS telephone +61 7 47211536, email reefvts@vtm.qld.gov.au. VHF communications remain unchanged.
- 087 Chart Aus 776 Williams Island to Winceby Island. Shoal located 34° 47'.56 S 136° 33'.16 E, depth 11.7m (Rosalind Shoal).
- 088 Cancelled.
- 089 Cancelled.
- 090 Cancelled.
- 091 Cancelled.
- 092 Drill rig *Maersk Discoverer* in position 19° 01'.34 S 114° 33'.25 E. 2.5M clearance requested.
- 093 Drill rig *Songa Venus* in position 13° 40'.53 S 123° 21'.31 E. 2.5M clearance requested.

**NAVAREA X WARNINGS**

Nil.

**Navigational warnings in force as at 090001UTC APR 10.****Auscoast**

2009 297

2010 007 047 053 060 070 074 076 077 080 081 087 092 093

**Navarea X**

005

**Summary of mobile drilling rigs as at 090001UTC APR 10.**

<i>Name</i>	<i>Position</i>
Ocean Patriot	38° 10'.86 S 148° 35'.58 E
Ocean Shield	10° 54'.01 S 126° 45'.26 E
Songa Venus	13° 40'.53 S 123° 21'.31 E
Transocean Legend	13° 41'.53 S 122° 11'.29 E
Maersk Discoverer	19° 01'.34 S 114° 33'.25 E
EnSCO 7500	20° 18'.48 S 114° 41'.25 E
Atwood Eagle	20° 37'.83 S 114° 28'.78 E
Jack Bates	20° 04'.24 S 113° 46'.46 E
Nan Hai 6	21° 26'.23 S 114° 02'.48 E
Ocean Epoch	21° 32'.30 S 114° 05'.60 E

**NAVAREA XIV WARNINGS**

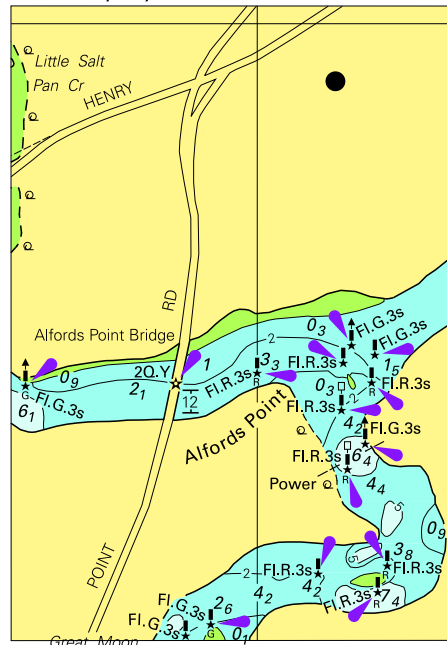
- 012 Cancelled.
- 013 Cancelled.
- 014 South Pacific Ocean. Fiji, Vanua Levu and Viti Levu. Lights unlit. The following light is unlit: Navula Point K4706 17° 53'.2 S 177° 14'.9 E. The following light is destroyed: Muanivanua Point K4740 17° 23'.9 S 179° 22'.1 E.

**Navarea XIV warnings in force as at 090001UTC APR 10.**

2009 059

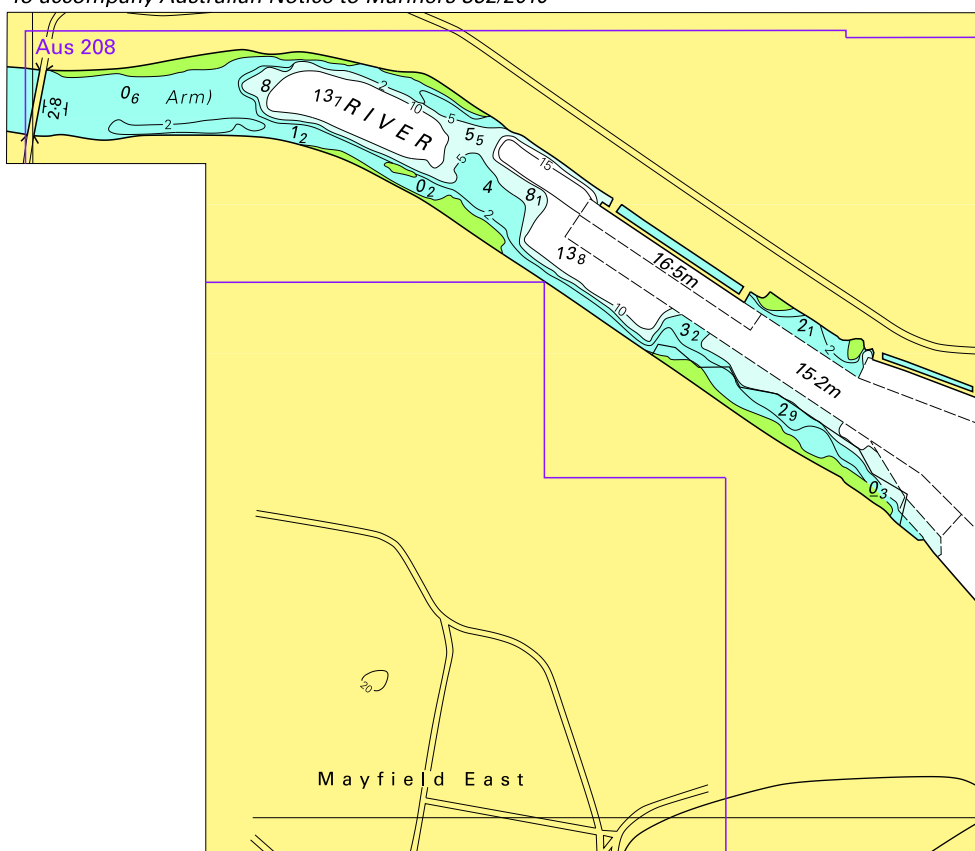
2010 007 014

To accompany Australian Notice to Mariners 349/2010



© Commonwealth of Australia 2010  
Block for chart Aus198 (58.4 x 83.9mm)

To accompany Australian Notice to Mariners 352/2010

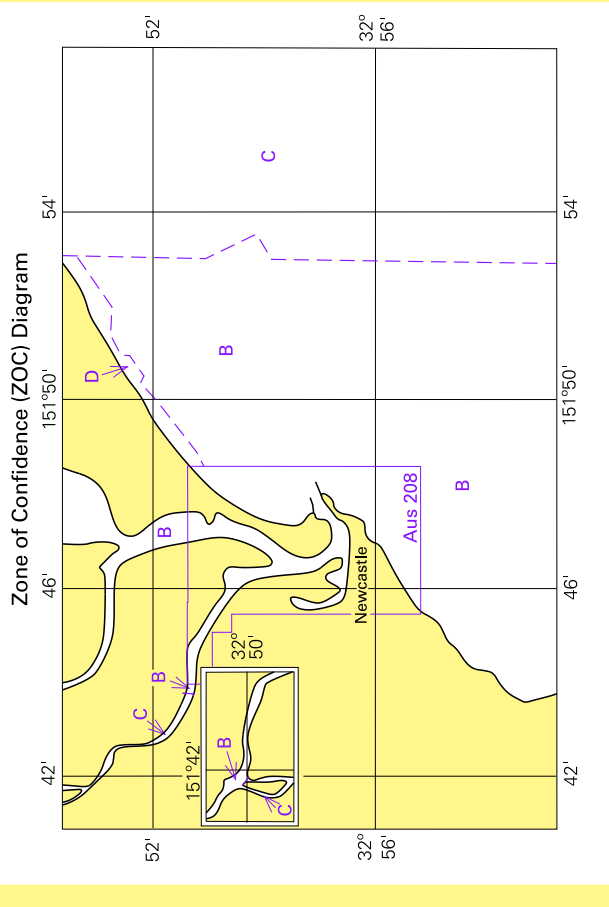


Block for chart Aus 207

© Commonwealth of Australia 2010

(129.2 x 111.3mm)

To accompany Australian Notice to Mariners 352/2010



**ZOC CATEGORIES**  
(For details see Australian Seafarers Handbook, AHP 20)

ZOC	POSITION ACCURACY	DEPTH ACCURACY	SEAFLOOR COVERAGE
A1	±5m	=0.50m + 1% d	All significant seafloor features detected
A2	±20m	=1.00m + 2% d	All significant seafloor features detected
B	±50m	=1.00m + 2% d	Uncharted features hazardous to surface navigation are not expected but may exist
C	±500m	=2.00m + 5% d	Depth anomalies may be expected
D	Worse than ZOC C	Worse than ZOC C	Large depth anomalies may be expected
U	Unassessed - The quality of the bathymetric data has yet to be assessed		

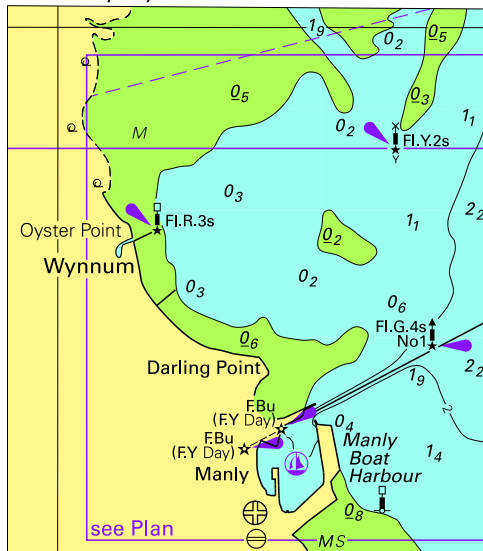
Hamilton North

Block for chart Aus 207

© Commonwealth of Australia 2010

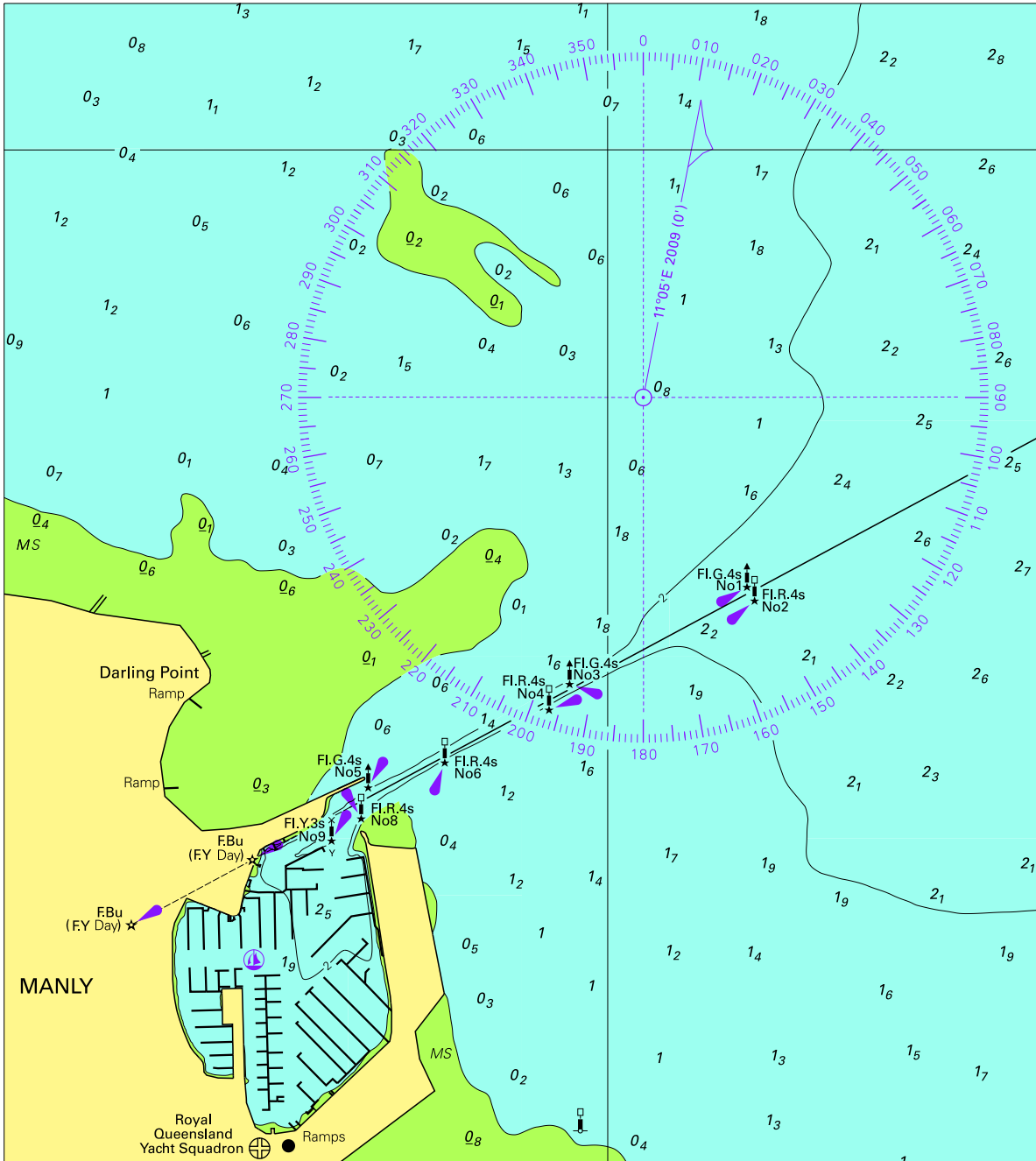
(225.4 x 88.2mm)

To accompany Australia Notice to Mariners 354/2010



© Commonwealth of Australia 2010  
Block for chart Aus 236 (63.6 x 72.3mm)

To accompany Australia Notice to Mariners 354/2010



Block for chart Aus 236

© Commonwealth of Australia 2010

13 (156.4 x 175.2mm)