



26 March 2010

Edition 6

Australian Notices to Mariners are the authority for correcting Australian Charts and Publications

AUSTRALIAN NOTICES TO MARINERS

Notices 281 – 344 

Published fortnightly by the Australian Hydrographic Service

Commodore R. NAIRN RAN
Hydrographer of Australia

SECTIONS.

- I. **Australian Notices to Mariners, including blocks and notes.**
- II. **Hydrographic Reports.**
- III. **Navigational Warnings.**

SUPPLEMENTS.

- I. **Tracings**
- II. **Cumulative List of Australian Notices to Mariners.**
- III. **Temporary and Preliminary Notices in force.**
- IV. **Amendments to Admiralty List of Lights and Fog Signals (Vol K),
Radio Signals (NP 281(2), 282, 283(2), 285, 286(4)) and Sailing
Directions (NP 9, 13, 14, 15, 33, 34, 35, 36, 39, 44, 51, 60, 61, 62, 100, 136).**

© Commonwealth of Australia 2010

This work is copyright. Apart from any use permitted under the Copyright Act 1968, no part may be reproduced by any process, adapted, communicated or commercially exploited without prior written permission from The Commonwealth represented by the Australian Hydrographic Service.

IMPORTANT NOTICE

This edition of Notices to Mariners includes all significant information affecting AHS products which the AHS has become aware of since the last edition. All reasonable efforts have been made to ensure the accuracy and completeness of the information, including third party information, on which these updates are based. The AHS regards third parties from which it receives information as reliable, however the AHS cannot verify all such information and errors may therefore exist. The AHS does not accept liability for errors in third party information.

GENERAL INSTRUCTIONS

The substance of these notices should be inserted on the charts affected.

Bearings are referred to the true compass and are reckoned clockwise from North; those relating to lights are given as seen by an observer from seaward. Positions quoted in permanent notices relate to the horizontal datum for the chart(s). When preliminary or temporary notices affect multiple charts, positions will be provided in relation to only one horizontal datum and that datum will be specified. When the multiple charts do not have a common horizontal datum, mariners will be required to adjust the position(s) for those charts not on the specified datum. The range quoted for a light is its nominal range. Depths are with reference to the chart datum of each chart. Heights are above mean high water springs or mean higher high water, as appropriate.

The capital letter (P) or (T) after the number of any notice denotes a preliminary or temporary notice respectively, which are contained separately at the end of the permanent notices. A star (*) adjacent to the number of a notice indicates that the notice is based on original information.

REPORTING OF DANGERS

Mariners are particularly requested to notify the AUSTRALIAN HYDROGRAPHIC SERVICE, Locked Bag 8801 Wollongong, NSW 2500 (Fax 02-4223 6599, e-mail Hydro.NTM@defence.gov.au or, alternatively by filling in and submitting the [Hydrographic Notes](#) forms located on the web site – www.hydro.gov.au), immediately on the discovery of new dangers or suspected dangers to navigation. For changes or defects in aids to navigation notify AusSAR (Fax 02-6230 6868 or email rccaus@amsa.gov.au).

AUTHORISED USE

Copies of Australian notices are available free of charge from the Australian Hydrographic Service (AHS) website (www.hydro.gov.au) and through the eNotices (email) service (www.hydro.gov.au/enotices/enotices.htm).

Individual Notices may be copied for the purpose of inserting Notice substance on official charts and publications. Paper copies may be printed by chart agents and distributed to customers on a cost recovery basis. Participating chart agents are listed on the AHS website as providing a 'Paper Notices to Mariners' service (www.hydro.gov.au/prodserv/distributors/distributors.htm). Copies of the notices may not be sold for profit without prior written agreement.

NUMERICAL INDEX OF NOTICES TO MARINERS

Edition No 6

Notices	Aus Chart, INT Chart, ENC Cell
281.....	Aus 155, 208, 267, 414, 415, 416, 417, 4723, 4725, 5001, AU210120, 415130, 420118, 431153, 5X22P1, 5XX144
282.....	Aus 198
283.....	Aus 198
284.....	Aus 216, AX 67215
285.....	Aus 809, AX 0809E
286.....	Aus 209
287.....	Aus 219
288.....	Aus 219
289.....	Aus 236
290.....	Aus 4060, 4602, INT 60, 602
291.....	Aus 258
292.....	Aus 554
293.....	Aus 4
294.....	Aus 4
295.....	Aus 26, AX 72026
296.....	Aus 32
297.....	Aus 732
298.....	Aus 45
299.....	Aus 57, 58, 59
300.....	Aus 64, 328, 743
301.....	Aus 744, 745
302.....	Aus 115
303.....	Aus 337
304.....	Aus 343, 345, 444, 776, 4709, 4727, INT 709, 727, AX 0343E, 0776E
305.....	Aus 444, 778
306.....	Aus 125
307.....	Aus 787
308.....	Aus 174
309.....	Aus 164
310.....	Aus 167
311.....	Aus 141, 349, 487, 788
312.....	Aus 143
313(T).....	Aus 198, 199, AU5198X9
314(T).....	Aus 207, 208, AU5XX208
315(T).....	Aus 236, AU428153
316(T).....	Aus 242, 243, AU5XX242
317(T).....	Aus 249, 823, AX 0249E, 0823E, AU422149
318(T).....	Aus 251, 823, 824, AX 0823E, AU421149
319(T).....	Aus 251, 824, AU421149
320(T).....	Aus 249, 250, AX 0249E, AU422149, 5250P1
321(T).....	Aus 249, 251, 823, 824, AX 0249E, 0823E, AU422149
322(T).....	Aus 251, AU421148
323(T).....	Aus 252, 253, AU421149
324(T).....	Aus 252, AU421148
325(T).....	Aus 252, 254, 825, AU421148, 5254P2
326(T).....	Aus 825, AU421148
327(T).....	Aus 262, 263, 264, 830, AX 63262, AU417145, 5262X4
328(T).....	Aus 4604, INT 604, AX 4604F, AU130150
329(T).....	Aus 319, 320, AX 0319F, AU314123
330(T).....	Aus 52, 53, 54, 739, 740, AU5XXX52
331(T).....	Aus 327
332(T).....	Aus 57, 58, 59, 327, 328, 741, 742, AU421115, 421116, 5XXX58
333(T).....	Aus 327, 741, 742, AU421116
334(T).....	Aus 327, 328, AU320115
335(T).....	Aus 334, 754, AX 0334E, 0754E, 66002, AU432115
336(T).....	Aus 754, AX 0754E, 66002, AU432115
337(T).....	Aus 119, AU5119P1
338(T).....	Aus 119, AU434121, 5119P1
339(T).....	Aus 137, AU5137X8
340(T).....	Aus 173, AU444146
341(T).....	Aus 154, AU5XX154
342(T).....	Aus 150, AU5150P3
343(T).....	Aus 357A, 487, AU439148
344(T).....	Summer time

ENC Cell	Notices
AU130150	328(T)
AU210120	281
AU314123	329(T)
AU320115	334(T)
AU415130	281
AU417145	327(T)
AU420118	281
AU421115	332(T)
AU421116	332(T), 333(T)
AU421148	322(T), 324(T), 325(T), 326(T)
AU421149	318(T), 319(T), 323(T)
AU422149	317(T), 320(T), 321(T)
AU428153	315(T)
AU431153	281
AU432115	335(T), 336(T)
AU434121	338(T)
AU439148	343(T)
AU444146	340(T)
AU5X22P1	281
AU5XXX52	330(T)
AU5XXX58	332(T)
AU5119P1	337(T), 338(T)
AU5137X8	339(T)
AU5XX144	281
AU5150P3	342(T)
AU5XX154	341(T)
AU5198X9	313(T)
AU5XX208	314(T)
AU5XX242	316(T)
AU5250P1	320(T)
AU5254P2	325(T)
AU5262X4	327(T)

281 AUSTRALIA - Product

Australian Hydrographic Service (AA451244, AA460867, AA461654, AA462536)

New Chart

<i>Chart</i>	<i>Published</i>	<i>Title and description of amendments</i>	<i>Scale</i>	<i>Index Chart</i>	<i>Price</i>
Aus 155	29/1/2010	Australia - South Coast - Victoria - Approaches to Port of Melbourne 37° 50'.10 S - 38° 03'.34 S 144° 40'.10 E - 145° 06'.50 E Plans: St Kilda 37° 51'.26 S - 38° 52'.02 S 144° 57'.25 E - 144° 58'.30 E Altona 37° 51'.81 S - 37° 52'.38 S 144° 50'.68 E - 144° 51'.40 E Brighton 37° 54'.02 S - 37° 54'.78 S 144° 58'.24 E - 144° 59'.20 E Sandringham 37° 56'.20 S - 37° 56'.96 S 144° 59'.04 E - 145° 00'.00 E <i>New chart with amended limits providing improved coverage of approaches to shipping fairway and Port of Melbourne anchorages.</i>	1:37 500 1:10 000 1:7 500 1:10 000 1:10 000	Aus 5001	\$35.00

New Electronic Navigation Chart (Seafarer ENC)

<i>Cell Name</i>	<i>Released</i>	<i>Title</i>
AU210120	March 2010	Australia - Indonesia - Flinders Shoal to Dili
AU415130	March 2010	Northern Territory - Fitzmaurice River
AU420118	March 2010	Western Australia - North Turtle Island
AU431153	March 2010	Tasman Sea - Smokey Cape to Solitary Islands
AU5X22P1	March 2010	Northern Territory - Port Melville
AU5XX144	March 2010	Victoria - The Rip

New Chart to be published shortly

<i>Chart</i>	<i>Title</i>	<i>Scale</i>	<i>Expected Publication Date</i>	<i>Expected Stock Availability</i>
Aus 267	Australia - East Coast - Queensland - Port of Lucinda Plan: Lucinda Offshore Wharf	1:12 500 1:5 000	26 March 2010	3 May 2010

New Edition to be published shortly

<i>Chart</i>	<i>Title</i>	<i>Scale</i>	<i>Expected Publication Date</i>	<i>Expected Stock Availability</i>
Aus 208	Australia - East Coast - New South Wales - Newcastle Harbour Inset: Hunter River (South Arm)	1:7 500 1:10 000	26 March 2010	3 May 2010

Chart permanently withdrawn

<i>Chart</i>	<i>On publication of new chart</i>
Aus 155	Aus 155

Chart to be permanently withdrawn without replacement

<i>Chart</i>	<i>On publication of new chart/edition</i>
Aus 414	Aus 4723
Aus 415	Aus 4723
Aus 416	Aus 4723 and Aus 4725
Aus 417	Aus 4723 and Aus 4725

Miscellaneous chart amendment

Insert accompanying block for Aus 5001

26 March 2010

For further details refer to the AHS website at www.hydro.gov.au for new edition and new chart stock arrival information.

When placing orders with a chart agent, mariners should advise whether their order pertains to the current edition or the new edition.

282* AUSTRALIA - NEW SOUTH WALES - Port Hacking - Lilli Pilli Point - Light buoy established

NSW Maritime (AA457519, AA457520)

Aus 198 [193/2010]

Insert	starboard lateral conical light buoy, <i>Fl.G.3s</i> , without topmark	34° 04'.410 S	151° 06'.677 E
--------	--	---------------	----------------

283* AUSTRALIA - NEW SOUTH WALES - Botany Bay - Infrastructure; nav aids; maintained depths

Sydney Ports (AA451789 - AA451793, AA452760)

Aus 198 [282/2010]

Insert	accompanying block	33° 58'.4 S	151° 12'.3 E
--------	--------------------	-------------	--------------

284* AUSTRALIA - NEW SOUTH WALES - Brisbane Water - Wagstaff Point to Pelican Island - Light buoy repositioned; light buoys established

NSW Maritime (AA457519, AA457520, AA444955, AA444956)

Aus 216 [243/2010]

Insert	starboard lateral spar light buoy, <i>Fl.G.2s</i> , without topmark	33° 28'.964 S	151° 19'.504 E
--------	---	---------------	----------------

	starboard lateral conical light buoy, <i>Fl.G.3s</i> , without topmark	33° 28'.675 S	151° 19'.523 E
--	--	---------------	----------------

Move	light buoy to	33° 31'.33 S	151° 20'.02 E
		33° 31'.344 S	151° 20'.020 E

Delete	light buoy	33° 28'.64 S	151° 19'.52 E
--------	------------	--------------	---------------

AX 67215 [635/2007]

Move	light buoy to	33° 31'.35 S	151° 20'.03 E
		33° 31'.344 S	151° 20'.020 E

Delete	light buoy	33° 31'.32 S	151° 20'.05 E
--------	------------	--------------	---------------

285* AUSTRALIA - NEW SOUTH WALES - Swansea - Light buoy withdrawn

NSW Maritime (AA457519, AA457520)

Aus 809 (plan, Lake Macquarie Entrance) [1351/2009]

Delete	light buoy	33° 04'.22 S	151° 38'.42 E
--------	------------	--------------	---------------

AX 0809E (plan, Lake Macquarie Entrance) [1351/2009]

Delete	light buoy	33° 04'.22 S	151° 38'.42 E
--------	------------	--------------	---------------

286* AUSTRALIA - NEW SOUTH WALES - Port Stephens - Nelson Bay to Witts Island - Light buoys repositioned; light beacon established

NSW Maritime (AA457519, AA457520, AA444955, AA444956)

Aus 209 [244/2010]

Insert	special cylindrical light buoy, <i>Fl. Y.5s</i> , without topmark	32° 42'.724 S	152° 09'.300 E
Move	light buoy	32° 42'.67 S	152° 09'.42 E
	to	32° 42'.597 S	152° 09'.480 E
	light buoy	32° 42'.71 S	152° 09'.34 E
	to	32° 42'.662 S	152° 09'.397 E
Substitute	port lateral light beacon, <i>Fl.R.3s</i> , with topmark for beacon	32° 39'.68 S	152° 09'.75 E
Delete	depth, 1 ₈ m	32° 42'.74 S	152° 09'.28 E

287* AUSTRALIA - NEW SOUTH WALES - Cape Hawke Harbour - Native Dog Island - Beacon established; buoy established

NSW Maritime (AA457519, AA457520, AA444955, AA444956)

Aus 219 (plan, Cape Hawke Harbour) [246/2010]

Insert	port lateral beacon, with topmark	32° 10'.84 S	152° 29'.29 E
	starboard lateral spar buoy, without topmark	32° 11'.084 S	152° 29'.394 E
Delete	beacon	32° 11'.07 S	152° 29'.39 E

288* AUSTRALIA - NEW SOUTH WALES - Port Macquarie - Light buoys altered

NSW Maritime (AA444955, AA444956)

Aus 219 (plan, Port Macquarie) [287/2010]

Insert	accompanying block	31° 25'.8 S	152° 54'.3 E
--------	--------------------	-------------	--------------

Aus 219 (plan, Hastings River)

Insert	accompanying block	31° 25'.3 S	152° 54'.2 E
Delete	topmark	31° 24'.76 S	152° 54'.55 E

289* AUSTRALIA - QUEENSLAND - Moreton Bay - Chain Banks - Artificial reef

Maritime Safety Queensland Notice 226/2010 (AA460525, AA461399, AA461400)

Aus 236 [104/2010]

Insert	depth, 5m	27° 24'.53 S	153° 18'.30 E
	danger line with legend, <i>Artificial Reef</i> , between	27° 24'.03 S	153° 18'.64 E
		27° 24'.26 S	153° 18'.93 E
		27° 24'.79 S	153° 18'.41 E
		27° 24'.55 S	153° 18'.05 E
		27° 24'.03 S	153° 18'.64 E
Delete	contour, between	27° 24'.1 S	153° 18'.7 E
		27° 24'.7 S	153° 18'.3 E
	contour, between	27° 24'.3 S	153° 18'.9 E
		27° 24'.7 S	153° 18'.5 E
	fish haven, least depth 5m	27° 24'.4 S	153° 18'.7 E

290* AUSTRALIA - CORAL SEA - Argo Bank - Depths eastwards

Geoscience Australia (AA459686)

Aus 4060 (INT 60) [32/2010]

Insert	depth, 404m, and extend contour N to enclose	23° 51'.2 S	161° 43'.0 E
--------	--	-------------	--------------

Substitute	depth, 595m, for depth, 753m	22° 46'.0 S	161° 17'.0 E
------------	------------------------------	-------------	--------------

Aus 4602 (INT 602) [151/2010]

Insert	depth, 595m, enclosed by contour	22° 51'.7 S	161° 18'.0 E
--------	----------------------------------	-------------	--------------

	depth, 953m, enclosed by contour	23° 04'.8 S	161° 28'.8 E
--	----------------------------------	-------------	--------------

	depth, 404m, enclosed by contour	23° 51'.2 S	161° 43'.0 E
--	----------------------------------	-------------	--------------

Delete	depth, 753m, and enclosing contour	22° 46'.0 S	161° 17'.0 E
--------	------------------------------------	-------------	--------------

291* AUSTRALIA - QUEENSLAND - Mourilyan - Light buoy repositioned

Maritime Safety Queensland Notice 220/2010 (AA460529)

Aus 258 (plan, Mourilyan Harbour) [199/2010]

Move	light buoy	17° 36'.09 S	146° 07'.56 E
------	------------	--------------	---------------

	to	17° 36'.101 S	146° 07'.554 E
--	----	---------------	----------------

292* PAPUA NEW GUINEA - Duke of York Island - Depths; chart limits

Australian Hydrographic Service (AA451244)

Aus 554 [193/2009]

Insert	accompanying block	4° 10'.0 S	152° 26'.0 E
--------	--------------------	------------	--------------

293* AUSTRALIA - QUEENSLAND - Weipa - Anchorages; pilot boarding place

Maritime Safety Queensland Notice 227/2010 (AA460546)

Aus 4 [945/2009]

Insert	accompanying block	12° 42'.0 S	141° 36'.0 E
--------	--------------------	-------------	--------------

294* AUSTRALIA - QUEENSLAND - Weipa - Wooldrum Point to Lorim Point - Depths; lights; navline

Maritime Safety Queensland (AA452244 - AA452249)

Aus 4 (plan, Port of Weipa) [293/2010]

Insert	accompanying block A	12° 40'.3 S	141° 49'.0 E
--------	----------------------	-------------	--------------

	accompanying block B	12° 40'.3 S	141° 51'.9 E
--	----------------------	-------------	--------------

	dashed line, between	12° 39'.676 S	141° 52'.080 E
--	----------------------	---------------	----------------

		12° 40'.135 S	141° 49'.882 E
--	--	---------------	----------------

Move	light	12° 39'.68 S	141° 52'.08 E
------	-------	--------------	---------------

	to	12° 39'.676 S	141° 52'.080 E
--	----	---------------	----------------

	light	12° 40'.02 S	141° 50'.43 E
--	-------	--------------	---------------

	to	12° 40'.019 S	141° 50'.437 E
--	----	---------------	----------------

Delete	dashed line, between	12° 39'.68 S	141° 52'.08 E
--------	----------------------	--------------	---------------

		12° 40'.13 S	141° 49'.88 E
--	--	--------------	---------------

295* AUSTRALIA - NORTHERN TERRITORY - Darwin - Naval waters
Department of Defence (DHDB 1440966)

Aus 26 [110/2010]

Insert	magenta dashed circle, radius 926m with legend, <i>Naval Waters</i> , centred on mooring buoy	12° 27'.99 S	130° 47'.62 E
--------	--	--------------	---------------

AX 72026 [110/2010]

Insert	magenta dashed circle, radius 926m with legend, <i>Naval Waters</i> , centred on mooring buoy	12° 27'.99 S	130° 47'.62 E
--------	--	--------------	---------------

296* AUSTRALIA - WESTERN AUSTRALIA - Cambridge Gulf - Cape Domett - Contour
Australian Hydrographic Service (AA456625, AA456626)

Aus 32 [255/2010]

Insert	contour between	14° 50'.80 S	128° 24'.03 E
		14° 50'.85 S	128° 24'.33 E
		14° 51'.05 S	128° 24'.22 E

297* AUSTRALIA - WESTERN AUSTRALIA - Mavis Reef to Steep Island - Contour
Australian Hydrographic Service (AA457481 - AA457483)

Aus 732 [1163/2009]

Insert	contour to enclose depth, 19 ₅ m	15° 32'.45 S	123° 58'.50 E
	broken contour to enclose depth, 16 ₅ m	16° 04'.05 S	124° 28'.80 E

298* AUSTRALIA - WESTERN AUSTRALIA - Outer Rip Shoal to Amur Point - Contours
Australian Hydrographic Service (AA457485 - AA457487)

Aus 45 [871/2007]

Insert	contour to enclose depth, 0 ₅ m	17° 13'.36 S	123° 36'.50 E
	contour to enclose depth, 9m	17° 06'.71 S	123° 29'.37 E

299* AUSTRALIA - WESTERN AUSTRALIA - Dampier - Phillip Point to East Intercourse Island - Naval waters; depth
Australian Hydrographic Service (AA456493), Department of Defence (DHDB 1440966), Department of Transport WA (DHDB 730557)

Aus 57 [112/2010]

Insert	depth, 9 ₅ m, semi enclosed by contour to NW	20° 38'.31 S	116° 40'.84 E
--------	---	--------------	---------------

Aus 58 [207/2010]

Insert	depth, 9 ₅ m, enclosed by contour	20° 38'.305 S	116° 40'.835 E
--------	--	---------------	----------------

Aus 59 (plan, Withnell Bay to King Bay) [207/2010]

Insert	magenta dashed circle, radius 183m with legend, <i>Naval Waters</i> , centred on mooring buoy	20° 37'.39 S	116° 44'.23 E
--------	--	--------------	---------------

Aus59 (plan, Dampier Wharves)

Insert	depth, 9 ₅ m, enclosed by contour	20° 38'.385 S	116° 40'.755 E
	contour to enclose depth, 0 ₁ m	20° 37'.715 S	116° 40'.012 E
	contour, between	20° 38'.723 S	116° 41'.694 E
		20° 38'.716 S	116° 41'.651 E
		20° 38'.695 S	116° 41'.620 E
		20° 38'.713 S	116° 41'.580 E

Delete	depth, 11 ₅ m	20° 38'.35 S	116° 40'.70 E
--------	--------------------------	--------------	---------------

300* AUSTRALIA - WESTERN AUSTRALIA - Thevenard Island to Onslow - Mooring buoy established; contours
 Australian Hydrographic Service (AA455283, AA45524), Department of Transport Notice 37B/2010 (AA459698)

Aus 64 [1000/2009]

Insert	mooring buoy	21° 37'.04 S	115° 06'.98 E
	contour to enclose depth, 4 ₈ m	21° 26'.78 S	114° 55'.42 E
	contour to enclose depth, 15m	21° 25'.77 S	115° 06'.53 E

Aus 64 (plan, Onslow)

Insert	mooring buoy	21° 37'.036 S	115° 06'.976 E
	contour to enclose depth, 2m	21° 38'.277 S	115° 07'.737 E

Aus 328 [160/2010]

On certain copies only

Delete	light description, Fl(2)Y.6s	21° 26'.1 S	115° 01'.1 E
--------	------------------------------	-------------	--------------

Aus 743 [1362/2009]

Insert	mooring buoy	21° 37'.04 S	115° 06'.98 E
--------	--------------	--------------	---------------

301* AUSTRALIA - WESTERN AUSTRALIA - Point Murat - Light established

Department of Transport (AA460790, AA460791)

Aus 744 [1364/2009]

Insert	light, <i>F.Bu</i>	21° 49'.88 S	114° 10'.45 E
--------	--------------------	--------------	---------------

Aus 745 [258/2010]

Insert	light, <i>Ldg 2F.Bu</i>	21° 49'.34 S	114° 10'.80 E
	light, <i>F.Bu</i>	21° 49'.96 S	114° 10'.37 E

302* AUSTRALIA - WESTERN AUSTRALIA - Bunbury - Lights altered

Department of Transport (AA461103)

Aus 115 (plan, Port of Bunbury) [40/2010]

Amend	light to <i>Q.R</i>	33° 19'.67 S	115° 40'.37 E
	light to <i>Q.R</i>	33° 19'.60 S	115° 40'.26 E
	light to <i>VQ.R</i>	33° 19'.62 S	115° 40'.26 E

303* AUSTRALIA - WESTERN AUSTRALIA - Point Hood - Contours southeastwards

Australian Hydrographic Service (AA456623, AA456624)

Aus 337 [190/2008]

Insert	contour, between	34° 35'.08 S	120° 00'.75 E
		34° 35'.56 S	120° 00'.93 E
		34° 35'.56 S	120° 01'.81 E
		34° 35'.17 S	120° 02'.24 E
	broken contour to enclose depth, 435m	34° 37'.27 S	120° 05'.08 E

304* AUSTRALIA - SOUTH AUSTRALIA - Spencer Gulf - Rosalind Shoal - Depth
LADS Flight, Auscoast Warning 87/2010 (AA461184)

Aus 343 [262/2010]		
Substitute	depth, 11 ₇ m, for depth, 16 ₉ m	34° 47'.6 S 136° 33'.0 E
Aus 345 [262/2010]		
Substitute	depth, 6 ₂ m, for depth, 9 ₁ m	34° 47'.5 S 136° 33'.0 E
Aus 444 [42/2010]		
Substitute	depth, 6 ₂ m, for depth, 9 ₁ m	34° 47'.5 S 136° 32'.8 E
Aus 776 [42/2010]		
Insert	depth, 11 ₇ m, enclosed by contour	34° 47'.56 S 136° 33'.16 E
Delete	depth, 16 ₇ m, and enclosing contour	34° 47'.4 S 136° 33'.1 E
Aus 4709 (INT 709) [1169/2009]		
Substitute	depth, 12 ₁ m, for depth, 17 ₁ m	34° 47'.6 S 136° 33'.2 E
Aus 4727 (INT 727) [548/2009]		
Substitute	depth, 11 ₇ m, for depth, 16 ₉ m	34° 47'.6 S 136° 33'.2 E
AX 0343E [262/2010]		
Substitute	depth, 11 ₇ m, for depth, 16 ₉ m	34° 47'.6 S 136° 33'.0 E
AX 0776E [42/2010]		
Insert	depth, 11 ₇ m, and extend contour SE to enclose	34° 47'.56 S 136° 33'.16 E
Delete	depth, 16 ₇ m	34° 47'.4 S 136° 33'.1 E

305* AUSTRALIA - SOUTH AUSTRALIA - Spencer Gulf - Middle Bank - Light beacon removed
Department for Transport, Energy and Infrastructure SA (AA460958, AA460959)

Aus 444 [304/2010]		
Delete	light	33° 37'.1 S 137° 33'.0 E
Aus 778 [117/2010]		
Delete	light beacon	33° 36'.8 S 137° 32'.8 E

306* AUSTRALIA - SOUTH AUSTRALIA - Cape Jervis - Harbour limit
HydroSurvey Australia (AA451671)

Aus 125 (plan, Cape Jervis) [830/2009]		
Insert	magenta dashed semi-circle to the W, radius 200m with legend, <i>Cape Jervis Harbor Limit</i> , centred on	35° 36'.472 S 138° 05'.526 E

307* AUSTRALIA - VICTORIA - Point Hesse to Broken Head - Depths
Deakin University (DHDB 1077569)

Aus 787 [NC 29/1/2010]		
Insert	depth, 4 ₂ m, enclosed by contour	38° 37'.63 S 142° 55'.33 E
	depth, 10 ₁ m	38° 37'.78 S 142° 55'.99 E
	depth, 9 ₆ m, enclosed by contour to SW	38° 38'.35 S 143° 01'.82 E
Delete	depth, 10 ₃ m	38° 37'.6 S 142° 55'.5 E

308* AUSTRALIA - TASMANIA - Southport - Jetty

Former Notice - 574(T)/2009 is cancelled
 Marine and Safety Tasmania (AA454271, AA454272)

Aus 174 (plan, Southport) [1242/2008]

Insert	accompanying block	43° 26'.0 S	146° 58'.3 E
--------	--------------------	-------------	--------------

309* AUSTRALIA - TASMANIA - Devonport - Depths

Former Notice - 238(P)/2010 is cancelled
 Tasports (AA454296)

Aus 164 [1367/2009]

Insert	accompanying block	41° 09'.4 S	146° 21'.4 E
--------	--------------------	-------------	--------------

Aus 164 (plan, Devonport)

Insert	accompanying block	41° 10'.0 S	146° 22'.2 E
--------	--------------------	-------------	--------------

310* AUSTRALIA - TASMANIA - Port Dalrymple - North West Bank - Light beacon

Tasports (AA460492), UKHO (AA454269)

Aus 167 [879/2009]

Move	light beacon	41° 04'.74 S	146° 47'.75 E
	to	41° 04'.727 S	146° 47'.769 E

311* AUSTRALIA - VICTORIA - Henty Reef to Split Point - Depths
Deakin University (DHDB 1077546)

Aus 141 (plan, Loutit Bay) [768/2009]

Insert	depth, 19 ₄ m, and extend contour NE to enclose	38° 32'.476 S	144° 01'.289 E
Substitute	depth, 13 ₇ m, for depth, 14 ₃ m	38° 33'.17 S	143° 59'.99 E

Aus 349 [265/2010]

Insert	depth, 3 ₂ fm, enclosed by contour	38° 47'.29 S	143° 41'.84 E
	depth, 10 ₅ fm	38° 32'.36 S	144° 01'.88 E
	depth, 8 ₄ fm, and extend contour S to enclose	38° 29'.28 S	144° 04'.42 E
	depth, 8fm, and extend contour SE to enclose	38° 40'.57 S	143° 52'.65 E
Delete	depth, 3fm, and enclosing contour	38° 47'.2 S	143° 41'.7 E
	depth, 15fm	38° 31'.9 S	144° 01'.2 E
	depth, 9 ₅ fm, and enclosing contour	38° 29'.1 S	144° 05'.0 E

Aus 487 [46/2010]

Substitute	depth, 6 ₁ m, for depth, 5 ₄ m	38° 47'.3 S	143° 41'.9 E
	depth, 15 ₉ m, for depth, 18 ₉ m	38° 29'.2 S	144° 04'.5 E

Aus 788 [265/2010]

Insert	depth, 6 ₁ m, enclosed by contour	38° 47'.20 S	143° 41'.92 E
	depth, 15m, enclosed by contour	38° 40'.48 S	143° 52'.73 E
	depth, 19 ₄ m, and extend contour NE to enclose	38° 32'.48 S	144° 01'.29 E
	depth, 20m, enclosed by contour	38° 32'.27 S	144° 01'.96 E
	depth, 11 ₁ m, and extend contour N to enclose	38° 32'.85 S	144° 00'.38 E
	depth, 15 ₉ m,	38° 29'.19 S	144° 04'.50 E
Delete	depth, 17 ₇ m	38° 40'.2 S	143° 52'.6 E
	depth, 5 ₄ m, and enclosing contour	38° 47'.2 S	143° 42'.0 E
	depth, 17 ₁ m	38° 32'.6 S	144° 00'.9 E
	depth, 24m	38° 32'.5 S	144° 01'.7 E
	depth, 10 ₇ m	38° 33'.0 S	144° 00'.6 E
	depth, 18 ₉ m	38° 29'.2 S	144° 04'.4 E

312* AUSTRALIA - VICTORIA - Port Phillip - Melbourne - Chart limits

Australian Hydrographic Service (AA451244)

Aus 143 [266/2010]

Insert	magenta limits, with legend Aus 155 in SE corner, between	38° 03'.34 S	144° 40'.10 E
		38° 03'.34 S	145° 06'.50 E
		37° 50'.10 S	145° 06'.50 E
		37° 50'.10 S	144° 40'.10 E
		38° 03'.34 S	144° 40'.10 E
Delete	magenta limits, with legend Aus 155, centred on	37° 55'.0 S	144° 54'.0 E

313(T)/2010 AUSTRALIA - NEW SOUTH WALES - Botany Bay - Dredging operations completed; pipelay operations completed

Former Notice - 1115(T)/2009 is cancelled
Maritime NSW (AA461714)

Cancel this notice on receipt.

Chart formerly affected - Aus 198 - Aus 199 - AU5198X9

314(T)/2010 AUSTRALIA - NEW SOUTH WALES - Newcastle - Depth information

Former Notice - 1440(T)/2009 is cancelled
Newcastle Port Corporation (AA461106)

Available depths as at 18 March 2010:

<i>Berth</i>	<i>Metres</i>
* Western Basin 3	11.4
* Western Basin 4	11.4
Eastern Basin 1	11.2
Eastern Basin 2 North of Ch 450	11.5
Eastern Basin 2 South of Ch 450	11.0
Dockyard 2 (Dredge)	4.0
Channel Berth (formerly Dockyard 4)	8.3
Dyke 1	12.8
Dyke 2	12.6
* Dyke 4	16.1
* Dyke 5	16.1
Dyke 6	6.3
Mayfield 4 Ch 50 to 266	9.5
* BHP Wharf 6 to Ch 1050	7.8
Kooragang 2	11.6
Kooragang 2 North Dolphin	11.0
Kooragang 2 South Dolphin	11.0
Kooragang 3	13.0
Kooragang 4	16.5
Kooragang 5	16.3
Kooragang 6	16.3
* Kooragang 8	13.5
* Kooragang 9	TBA
Kooragang Ship Receival KSR	8.0
Throsby 1	9.5
Carrington wharf	To be sounded as and when required
Former Tug berth 4	6.5
Elgo wharf	To be sounded as and when required
<i>Channels</i>	
Entrance Approach	17.7
Entrance Channel (18.0m)	18.0
Entrance Channel (17.4m)	17.4
Entrance Channel (16.8m)	16.8
Entrance Channel (16.2m)	16.1
Entrance Channel to Horseshoe	15.2
Horseshoe	15.2
Steelworks Channel to Swinging Basin	15.0
Swinging Basin	15.0
Swinging Basin to Mayfield 4	9.5
* Hunter River South Arm	12.3
Basin Cutting	12.8
Basin Area to Eastern & Western Basin Berths	12.3
Basin Area to 1 Throsby	10.0
Stockton Crossing	3.6

* Indicates new or revised entry.

Chart temporarily affected - Aus 207 - Aus 208 - AU5XX208

315(T)/2010 AUSTRALIA - QUEENSLAND - Moreton Bay - Green Island - Light beacon destroyed
 Maritime Safety Queensland Notice 257(T)/2010 (AA461969)

The light beacon, *Fl.R.3s* (27° 24'.86 S 153° 14'.56 E), has been destroyed; a port lateral light buoy, *Fl.R.3s*, exists in situ.

Chart temporarily affected - Aus 236 - AU428153

316(T)/2010 AUSTRALIA - QUEENSLAND - Bundaberg - Depth information
Former Notice - 56(T)/2010 is cancelled
 Maritime Safety Queensland Notice 228(T)/2010 (AA461143)

Available depths as at 16 March 2010:

<i>Metres</i>	
* Sea Reach	9.4
* Middle Reach	9.0
* Inner Reach	8.6
* Swing Basin	7.9
* Oil Berth	8.0
* BST Berth	8.5
* Indicates revised entry.	

The deep draught departure channel from the BST berth to Middle Reach has a depth of 8.6m.

Chart temporarily affected - Aus 242 - Aus 243 - AU5XX242

317(T)/2010 AUSTRALIA - QUEENSLAND - Leeper Reef - Light buoy off station
 Maritime Safety Queensland Notice 249(T)/2010 (AA461992)

The east cardinal light buoy (21° 22'.89 S 149° 19'.86 E) is off station.

Chart temporarily affected - Aus 249 - Aus 823 - AX 0249E - AX 0823E - AU422149

318(T)/2010 AUSTRALIA - QUEENSLAND - Heskett Rock - Light beacon destroyed
 Maritime Safety Queensland Notice 273(T)/2010 (AA462501)

The south cardinal light beacon (20° 56'.19 S 149° 28'.98 E) has been destroyed.

Chart temporarily affected - Aus 251 - Aus 823 - Aus 824 - AX 0823E - AU421149

319(T)/2010 AUSTRALIA - QUEENSLAND - Schooner Rock - Light beacon destroyed
 Maritime Safety Queensland Notice 263(T)/2010 (AA461960)

The north cardinal light beacon (20° 54'.04 S 149° 25'.91 E) has been destroyed.

Chart temporarily affected - Aus 251 - Aus 824 - AU421149

320(T)/2010 AUSTRALIA - QUEENSLAND - Slade Island - Light buoy off station southeastwards
 Maritime Safety Queensland Notice 261(T)/2010 (AA461972)

The east cardinal light buoy (21° 06'.14 S 149° 15'.51 E) is off station.

Chart temporarily affected - Aus 249 - Aus 250 - AX 0249E - AU422149 - AU5250P1

321(T)/2010 AUSTRALIA - QUEENSLAND - Shoal Point - Light buoy off station
 Maritime Safety Queensland Notice 247(T)/2010 (AA461993)

The south cardinal light buoy (21° 00'.67 S 149° 11'.12 E) is off station.

Chart temporarily affected - Aus 249 - Aus 251 - Aus 823 - Aus 824 – AX 0249E – AX 0823E - AU422149

322(T)/2010 AUSTRALIA - QUEENSLAND - Acacia Island - Light beacon destroyed
 Maritime Safety Queensland Notice 266(T)/2010 (AA461961)

The light beacon, *Fl.R.3s* (20° 52'.40 S 148° 55'.66 E), has been destroyed.

Chart temporarily affected - Aus 251 - AU421148

323(T)/2010 AUSTRALIA - QUEENSLAND - Whitsunday Island - Whitehaven Beach - Light beacon destroyed
 Maritime Safety Queensland Notice 265(T)/2010 (AA461971)

The north cardinal light beacon (20° 17'.53 S 149° 03'.35 E) has been destroyed.

Chart temporarily affected - Aus 252 - Aus 253 - AU421149

324(T)/2010 AUSTRALIA - QUEENSLAND - Hook Island - Nara Inlet - Light beacon destroyed
 Maritime Safety Queensland Notice 262(T)/2010 (AA461974)

The light beacon, *Fl.R.2-5s* (20° 09'.81 S 148° 54'.04 E), has been destroyed.

Chart temporarily affected - Aus 252 - AU421148

325(T)/2010 AUSTRALIA - QUEENSLAND - Bird Island to Groper Point - Nav aids
 Maritime Safety Queensland Notice 254(T)/2010 (AA461978)

The south cardinal light beacon (20° 05'.76 S 148° 52'.59 E), has been destroyed.

The light beacon, *Fl.G.4s* (20° 04'.25 S 148° 53'.45 E), has been damaged.

The light beacon, *Fl.G.2-5s* (20° 04'.33 S 148° 53'.77 E), has been damaged.

The light buoy, *Fl.G.6s* (20° 03'.86 S 148° 54'.23 E), has been destroyed.

Chart temporarily affected - Aus 252 - Aus 254 - Aus 825 - AU421148 - AU5254P2

326(T)/2010 AUSTRALIA - QUEENSLAND - Cape Gloucester - Light buoy off station
 Maritime Safety Queensland Notice 256(T)/2010 (AA461962)

The west cardinal light buoy (20° 04'.01 S 148° 26'.41 E) is off station.

Chart temporarily affected - Aus 825 - AU421148

327(T)/2010 AUSTRALIA - QUEENSLAND - Cairns - Depth information*Former Notice - 511(T)/2009 is cancelled*

Maritime Safety Queensland Notice 239(T)/2010 (AA461277)

Available depths as of 19 March 2010:

	<i>Metres</i>	<i>Remarks</i>
Entrance Channel	8.3	
Crystal Swing Basin at:		
* 360 metre diameter	7.4	
* 380 metre diameter	6.8	
Swing Basin at:		
310 metre diameter	8.7	
* 320 metre diameter	8.0	
Marlin Marina	3.3	
Berths:		
* No 1	8.5	
No 2	8.5	
No 3	8.4	
No 4	8.4	
* No 5	7.1	
* No 6	7.1	between 500 metres and 550 metres
* No 6	7.4	between 550 metres and 600 metres
* No 7	10.0	
* No 8	10.1	
No 10	9.3	
No 12	10.5	
Smiths Creek 1	4.7	

* Indicates revised entry.

Chart temporarily affected - Aus 262 - Aus 263 - Aus 264 - Aus 830 – AX 63262 - AU417145 - AU5262X4**328(T)/2010 AUSTRALIA - CORAL SEA - Mellish Reef - Light buoy off station northeastwards**

Australian Bureau of Meteorology (AA462080)

The light buoy, *Fl. Y. 3s* (15° 48'.0 S 158° 31'.0 E), is drifting and currently in position 16° 37'.32 S 158° 15'.58 E (23 Mar 2010).**Chart temporarily affected –Aus 4604 (INT 604) - AX 4604F - AU130150****329(T)/2010 AUSTRALIA - WESTERN AUSTRALIA - Browse Island - Scientific instrument recovered***Former Notice - 1460(T)/2009 is cancelled*

MetOcean Engineers (AA459650)

Cancel this notice on receipt.

Chart formerly affected - Aus 319 - Aus 320 – AX 0319F - AU314123

330(T)/2010 AUSTRALIA - WESTERN AUSTRALIA - Port Hedland - Scientific instruments*Former Notice - 1254(T)/2008 is cancelled*

MetOcean Engineers (AA459881)

Scientific instruments exist as follows:

<i>Position (WGS84 datum)</i>	<i>Remarks</i>
20° 15'.42 S 118° 33'.72 E	5 poly floats
20° 15'.54 S 118° 33'.81 E	<i>Fl(5)Y.20s</i>
20° 13'.60 S 118° 30'.63 E	5 poly floats
20° 10'.62 S 118° 30'.50 E	5 poly floats
20° 08'.07 S 118° 23'.87 E	5 poly floats
20° 08'.05 S 118° 24'.15 E	5 poly floats
20° 08'.02 S 118° 24'.10 E	<i>Fl(5)Y.20s</i>
20° 07'.84 S 118° 24'.26 E	<i>Fl(5)Y.20s</i>
20° 07'.83 S 118° 24'.20 E	5 poly floats

Chart temporarily affected - Aus 52 - Aus 53 - Aus 54 - Aus 739 - Aus 740 - AU5XXX52**331(T)/2010 AUSTRALIA - WESTERN AUSTRALIA - Glomar Shoal - Scientific instruments northwards recovered***Former Notice - 1255(T)/2008 is cancelled*

MetOcean Engineers (AA459650)

Cancel this notice on receipt.

Chart formerly affected - Aus 327**332(T)/2010 AUSTRALIA - WESTERN AUSTRALIA - Rankin Bank to Dampier - Scientific instruments***Former Notice - 1293(T)/2009 is cancelled**Date - Until 28 February 2010*

MetOcean Engineers (AA459650, AA459881)

Scientific instruments exist as follows:

<i>Position (WGS84 datum)</i>	<i>Remarks</i>
20° 01'.99 S 115° 25'.37 E	lit buoy, <i>Fl(5)Y.20s</i>
20° 02'.06 S 115° 25'.24 E	poly-floats
20° 18'.55 S 116° 32'.98 E	poly-floats
20° 22'.31 S 116° 46'.57 E	lit buoy, <i>Fl(5)Y.20s</i>
20° 22'.35 S 116° 46'.47 E	5 poly-floats
20° 33'.90 S 116° 44'.03 E	5 poly-floats
20° 33'.91 S 116° 44'.06 E	lit buoy, <i>Fl(5)Y.20s</i>

Chart temporarily affected - Aus 57 - Aus 58 - Aus 59 - Aus 327 - Aus 328 - Aus 741 - Aus 742 - AU421115 - AU421116 - AU5XXX58**333(T)/2010 AUSTRALIA - WESTERN AUSTRALIA - Dampier - Rock laying operations northwestward***Date - Until 11 April 2010*

Apache Energy Ltd (AA461090)

FPV *Simon Stevin* will be conducting rock laying operations in position 20° 13'.03 S 116° 19'.34 E (WGS84 datum).**Chart temporarily affected - Aus 327 - Aus 741 - Aus 742 - AU421116**

334(T)/2010 AUSTRALIA - WESTERN AUSTRALIA - Rankin Bank - Scientific instruments

Date - Until 30 September 2010

MetOcean Engineers (AA459650)

Scientific instruments exist as follows:

Position (WGS84 datum) Remarks

19° 34'.35 S 116° 07'.55 E	lit buoy, <i>Fl(5)Y.20s</i>
19° 34'.23 S 116° 07'.50 E	subsurface
19° 40'.49 S 115° 55'.07 E	subsurface
19° 40'.68 S 115° 55'.22 E	lit buoy, <i>Fl(5)Y.20s</i>
19° 40'.86 S 115° 49'.83 E	lit buoy, <i>Fl(5)Y.20s</i>
19° 40'.94 S 115° 49'.87 E	subsurface
19° 48'.25 S 115° 39'.96 E	subsurface
19° 48'.28 S 115° 40'.70 E	subsurface
19° 48'.30 S 115° 40'.72 E	lit buoy, <i>Fl(5)Y.20s</i>
19° 48'.34 S 115° 39'.99 E	lit buoy, <i>Fl(5)Y.20s</i>
19° 54'.88 S 115° 37'.15 E	lit buoy, <i>Fl(5)Y.20s</i>
19° 54'.93 S 115° 37'.22 E	subsurface

Chart temporarily affected - Aus 327 - Aus 328 - AU320115**335(T)/2010 AUSTRALIA - WESTERN AUSTRALIA - Rottnest Island - Military exercise completed**

Former Notice - 278(T)/2010 is cancelled

Department of Defence (AA461380)

Cancel this notice on receipt.

Chart formerly affected - Aus 334 - Aus 754 – AX 0334E – AX 0754E – AX 66002 - AU432115**336(T)/2010 AUSTRALIA - WESTERN AUSTRALIA - Rottnest Island - Scientific instruments recovered**

Former Notice - 233(T)/2010 is cancelled

Curtin University (AA461276)

Cancel this notice on receipt.

Chart formerly affected - Aus 754 – AX 0754E – AX 66002 - AU432115**337(T)/2010 AUSTRALIA - WESTERN AUSTRALIA - Esperance - Depth information**

Former Notice - 616(T)/2008 is cancelled

Esperance Ports Sea and Land (AA461996)

Available depths as of 23 March 2010:

<i>Location</i>	<i>Metres</i>
Berth No 1	13.2
Berth No 2	13.3
Berth No 3	18.2
Swing Basin	12.9/14.5
Entrance Channel	18.5

Mariners are advised to navigate with caution in the area.

Chart temporarily affected - Aus 119 - AU5119P1

338(T)/2010 AUSTRALIA - WESTERN AUSTRALIA - Esperance - Light beacons destroyed

Former Notice - 976(T)/2009 is cancelled
Esperance Ports Sea and Land (AA462502)

No 1 light beacon (33° 51'.87 S 121° 54'.39 E) and No 2 light beacon (33° 51'.98 S 121° 54'.45 E) have been destroyed; special light buoys, *Fl. Y.2s*, exist in situ.

Chart temporarily affected - Aus 119 - AU434121 - AU5119P1

339(T)/2010 AUSTRALIA - SOUTH AUSTRALIA - Port Adelaide - Depths restored

Former Notice - 633(T)/2009 is cancelled
Department for Transport, Energy and Infrastructure SA Notice 12/2010 (AA461722)

Cancel this notice on receipt.

Chart formerly affected - Aus 137 - AU5137X8

340(T)/2010 AUSTRALIA - TASMANIA - Huon River - Marine farm works

Date - Until 19 April 2010
Marine and Safety Tasmania Notice M39/2010 (AA461716)

Works are in progress in the area bounded by the following positions;

43° 11'.55 S 146° 59'.13 E
43° 11'.71 S 146° 59'.60 E
43° 11'.57 S 146° 59'.70 E
43° 11'.41 S 146° 59'.23 E.

Chart temporarily affected - Aus 173 - AU444146

341(T)/2010 AUSTRALIA - VICTORIA - Port Phillip - Port Melbourne - River Yarra - Harbour works completed

Former Notice - 1037(T)/2009 is cancelled
Victorian Notice 31/2010 (AA461725)

Cancel this notice on receipt.

Chart formerly affected - Aus 154 - AU5XX154

342(T)/2010 AUSTRALIA - VICTORIA - Western Port - Rhyll - Harbour works

Date - Until 23 April 2010
Victorian Notice 30(T)/2010 (AA461279)

Works associated with the installation of a new pontoon, gangway and associated piling are in progress at Rhyll jetty (38° 28'.00 S 145° 18'.55 E).

Mariners are advised to navigate with caution in the area.

Chart temporarily affected - Aus 150 - AU5150P3

343(T)/2010 AUSTRALIA - BASS STRAIT - Drilling operations

Former Notice - 1470(T)/2009 is cancelled

Date - Until 31 May 2010

Esso Australia Pty Ltd (AA445557, AA445558, AA461783, AA461790)

The mobile drilling unit *Ocean Patriot* is conducting drilling operations in the following positions:

38° 07'.22 S 148° 23'.16 E

38° 09'.68 S 148° 12'.97 E

38° 10'.85 S 148° 35'.62 E

38° 10'.85 S 148° 35'.63 E

38° 10'.86 S 148° 35'.59 E

38° 10'.87 S 148° 35'.59 E

38° 19'.20 S 148° 06'.17 E.

A 500m safety zone exists at each location.

Mooring buoys exist up to 1200m from the mobile drilling unit.

Chart temporarily affected - Aus 357A - Aus 487 - AU439148**344(T)/2010 AUSTRALIA - Summer time**

Former Notice - 1147(T)/2009 is cancelled

Australian Government (AA427339)

Cancel this notice on receipt.

HYDROGRAPHIC REPORTS

<i>Locality</i>	<i>Report</i>	<i>Ship/Authority</i>	<i>Observer</i>
TAS- Trefoil Island	Islet	SV <i>Miriama</i>	B Wright

NAVIGATION WARNINGS

The following radio messages have been received during the period to 26 March 2010. Signal copies of these messages may be destroyed. It is recommended that the reprint of Navigational Warnings should be kept in a file or a book divided into areas. Cancellation should be made on receipt of signals and reprints.

Rigs on location other than those listed in the latest Section III summary are the subject of Radio Navigational Warnings. Rigs in transit will not be the subject of Warnings.

AUSCOAST WARNING

- 069 Cancelled.
- 070 Special purpose vessel *Geobay* conducting drilling operations in area bounded by 19° 55'.68 S to 19° 55'.81 S and 155° 22'.93 E to 115° 23'.10 E or area bounded by 21° 17'.25 S to 21° 29'.35 S and 114° 47'.60 E to 114° 50'.44 E, dependent on weather. 2.5M clearance requested.
- 071 Cancelled.
- 072 Colclough Reef light K1890 (13° 05'.29 S 143° 44'.99 E) unlit. Reports required to confirm operation.
- 073 Cancelled.
- 074 Special purpose vessel *Southern Supporter* conducting geophysical operations in area bounded by 15° 00'.0 S to 17° 40'.0 S and 121° 28'.0 E to 122° 10'.0 E. 2M clearance requested.
- 075 Cancelled.
- 076 Drill rig *Ensco 7500* in position 20° 18'.48 S 114° 41'.25 E. 2.5M clearance requested.
- 077 Drill rig *Ocean Patriot* in position 38° 10'.86 S 148° 35'.58 E. 2.5M clearance requested.
- 078 Cancelled.
- 079 Cancelled.
- 080 REEFVTS service permanently relocated from Hay Point VTS centre to Townsville VTS centre. REEFVTS telephone +61 7 47211536, email reefvts@vts.qld.gov.au. VHF communications remain unchanged.
- 081 Drill rig *Atwood Eagle* in position 20° 37'.83 S 114° 28'.78 E. 2.5M clearance requested.
- 082 Cancelled.
- 083 Cancelled.
- 084 Cancelled.
- 085 Cancelled.
- 086 Horn Island DGPS station ALRS Vol(2) (10° 35'.52 S 142° 16'.48 E) temporarily discontinued.

NAVAREA X WARNINGS

Nil.

Navigational warnings in force as at 260001UTC MAR 10.**Auscoast**

2009 297 304

2010 007 008 034 041 042 044 047 049 053 060 066 070 072 074 076 077 080 081 086

Navarea X

005

Summary of mobile drilling rigs as at 260001UTC MAR 10.

<i>Name</i>	<i>Position</i>
Ocean Patriot	38° 10'.86 S 148° 35'.58 E
Ocean Shield	10° 54'.01 S 126° 45'.26 E
Transocean Legend	13° 41'.53 S 122° 11'.29 E
Stena Clyde	20° 29'.93 S 114° 57'.21 E
Ensco 7500	20° 18'.48 S 114° 41'.25 E
Atwood Eagle	20° 37'.83 S 114° 28'.78 E
Jack Bates	20° 04'.24 S 113° 46'.46 E
Nan Hai 6	21° 26'.23 S 114° 02'.48 E
Ocean Epoch	21° 32'.30 S 114° 05'.60 E

III

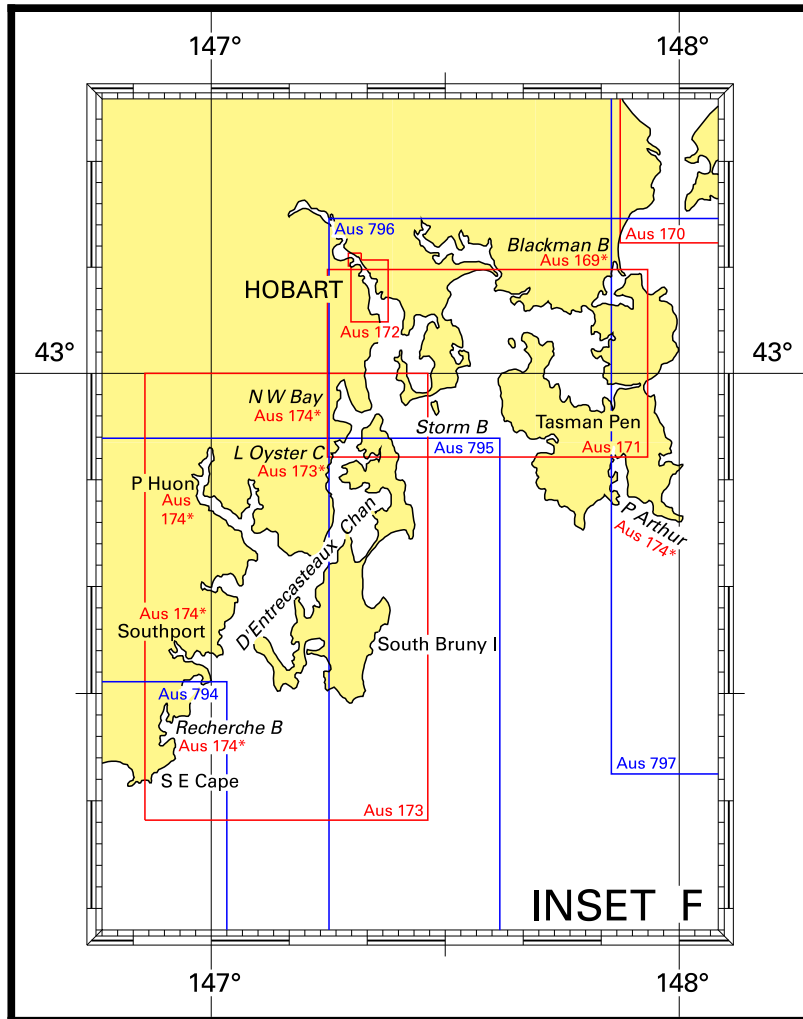
NAVAREA XIV WARNINGS

008 Cancelled.
009 Cancelled.
010 Cancelled.
011 Cancelled.

Navarea XIV warnings in force as at 260001UTC MAR 10.

2009 059
2010 006 007

To accompany Australian Notice to Mariners 281/2010

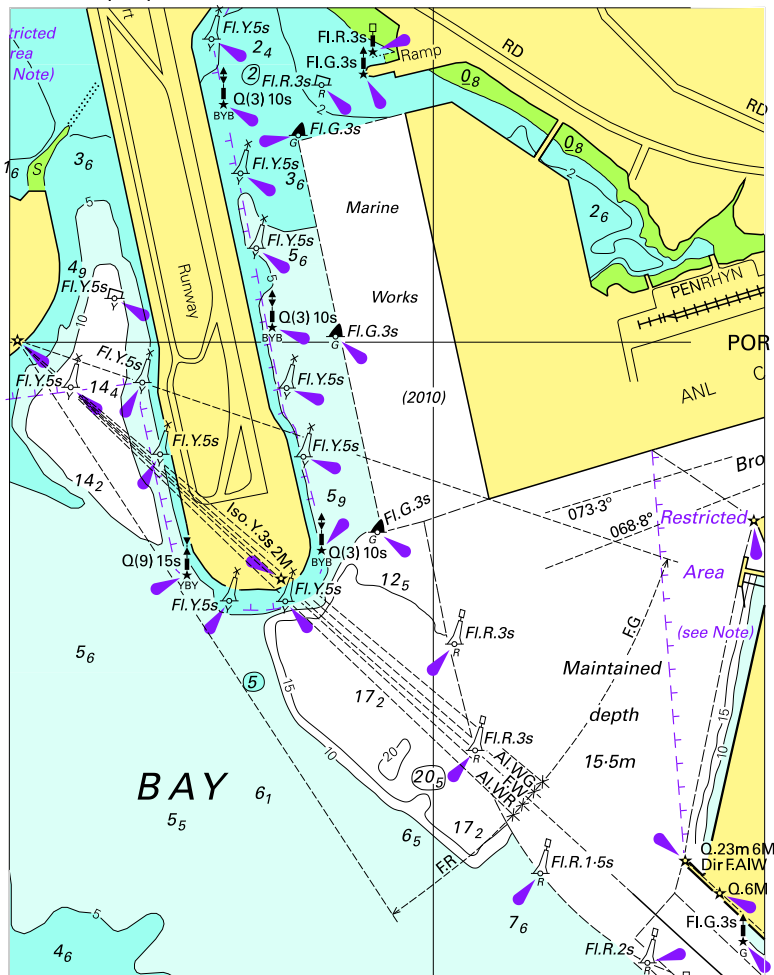


Block for Aus 5001

© Commonwealth of Australia

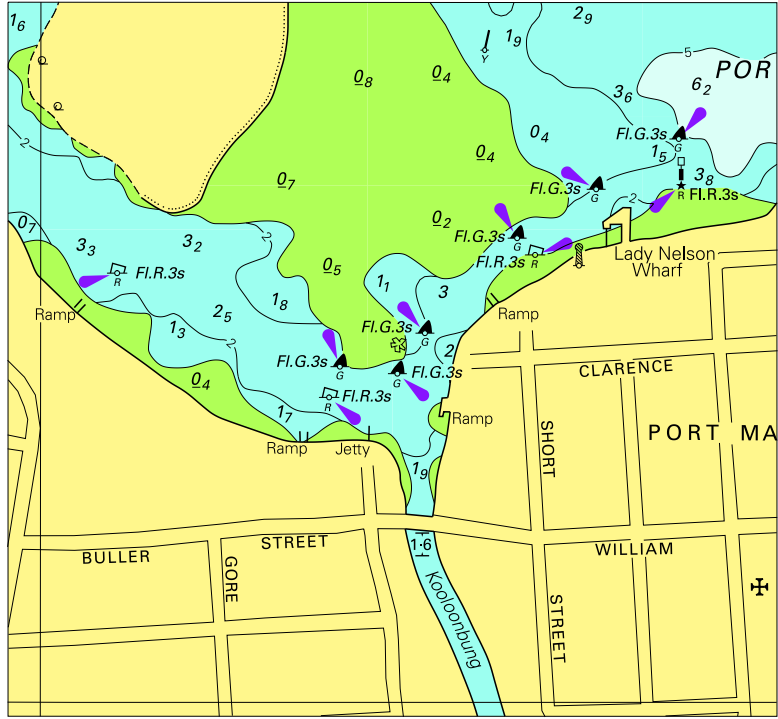
(106.6 x 134.8mm)

To accompany Australian Notice to Mariners 283/2010



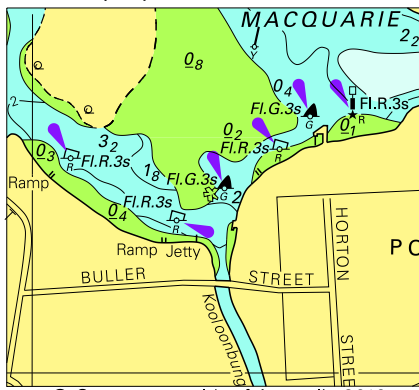
Block for chart Aus198 © Commonwealth of Australia 2010 (99.9 x 128.0mm)

To accompany Australian Notice to Mariners 288/2010



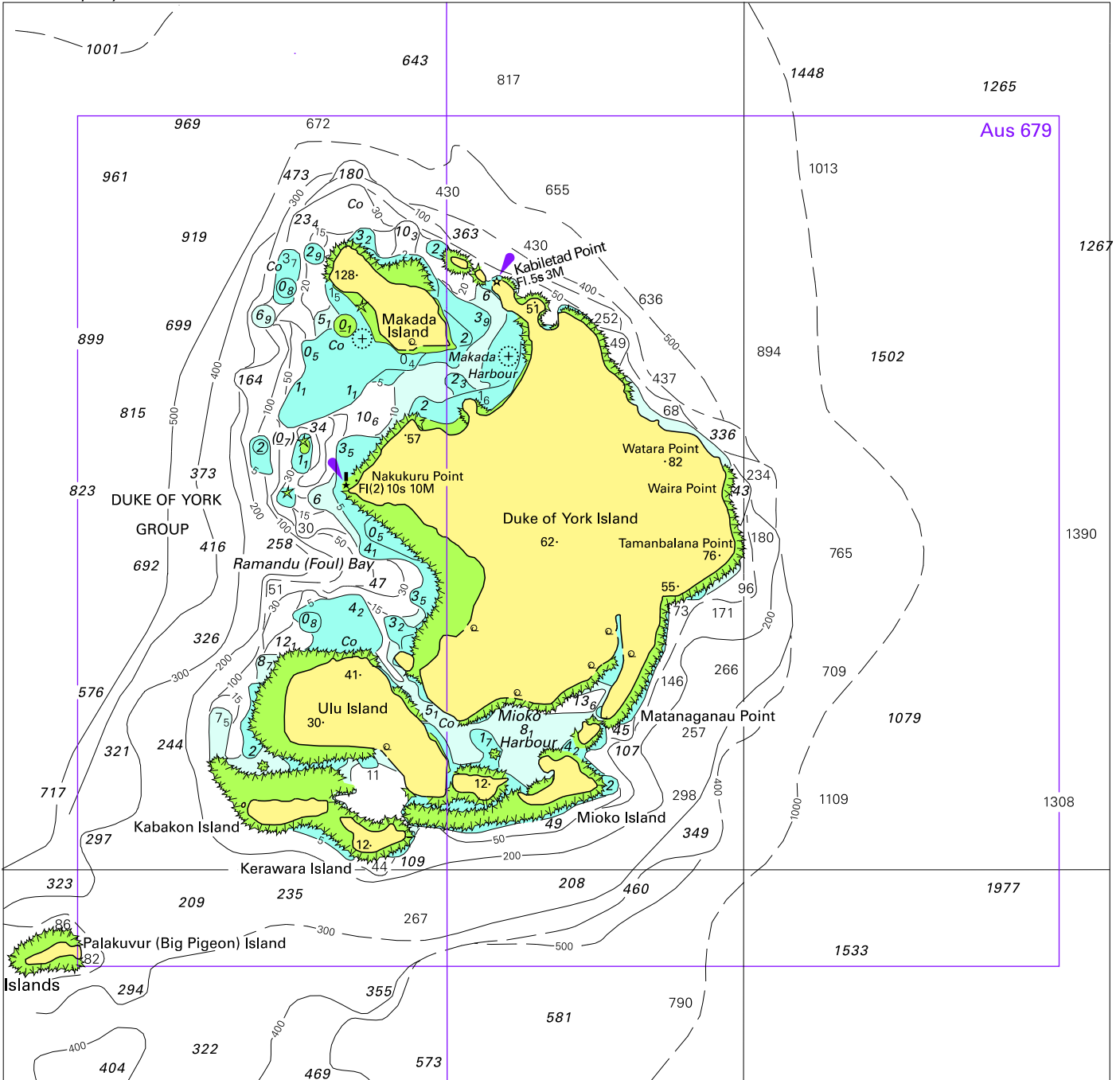
Block for chart Aus 219 © Commonwealth of Australia 2010 (101.7 x 94.4mm)

To accompany Australian Notice to Mariners 288/2010



© Commonwealth of Australia 2010
Block for chart Aus 219 (54.8 x 50.0mm)

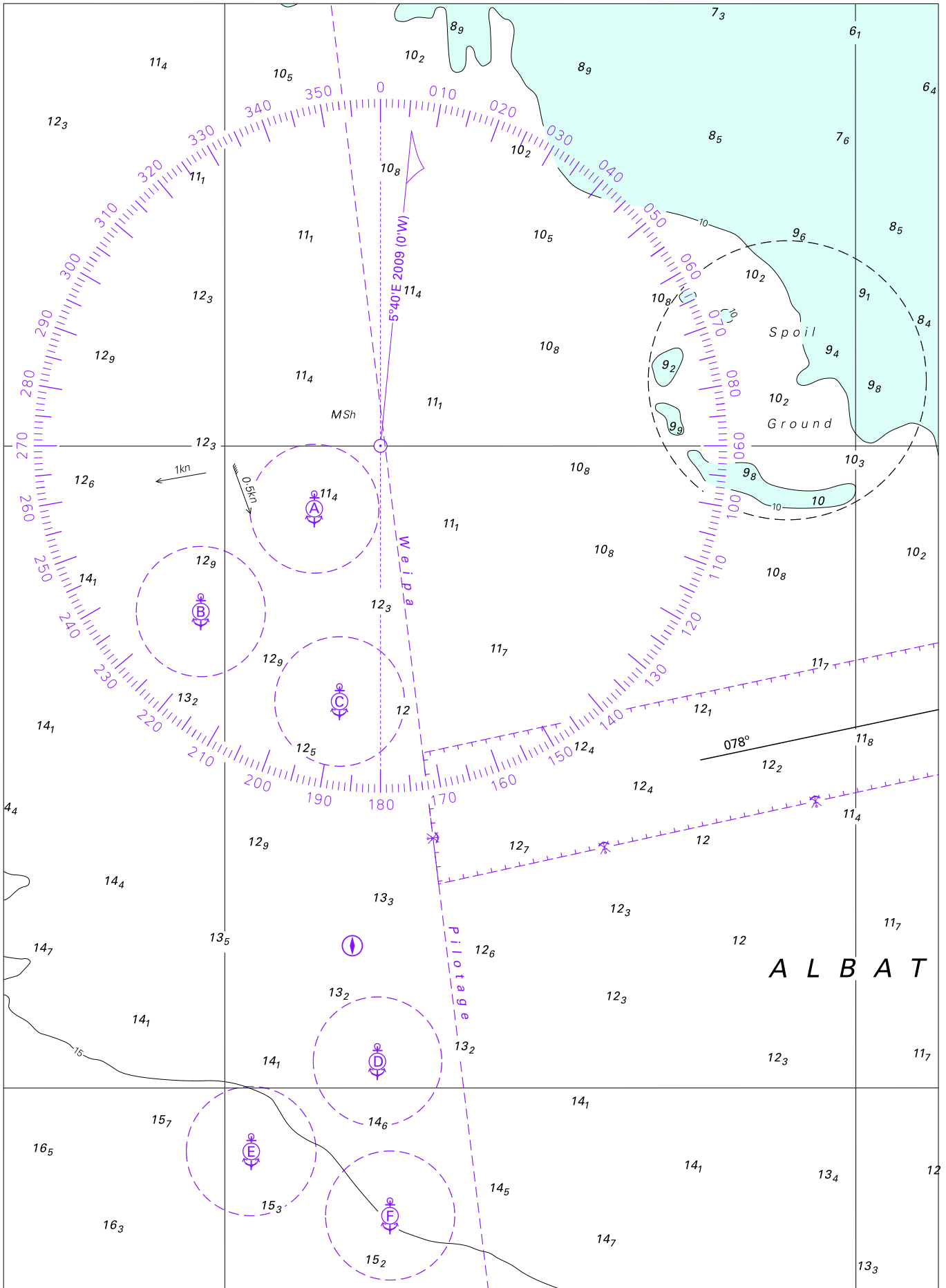
To accompany Australian Notice to Mariners 292/2010



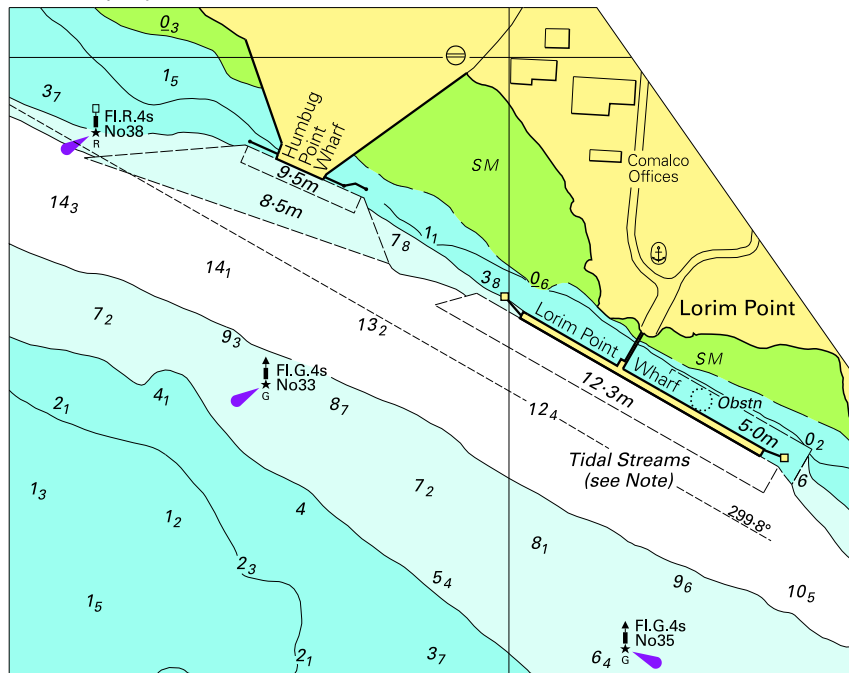
Block for chart Aus 554

© Commonwealth of Australia 2010

(183.8 x 179.4mm)



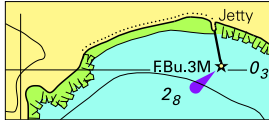
To accompany Australian Notice to Mariners 294/2010



Block B for chart Aus 4 © Commonwealth of Australia 2010

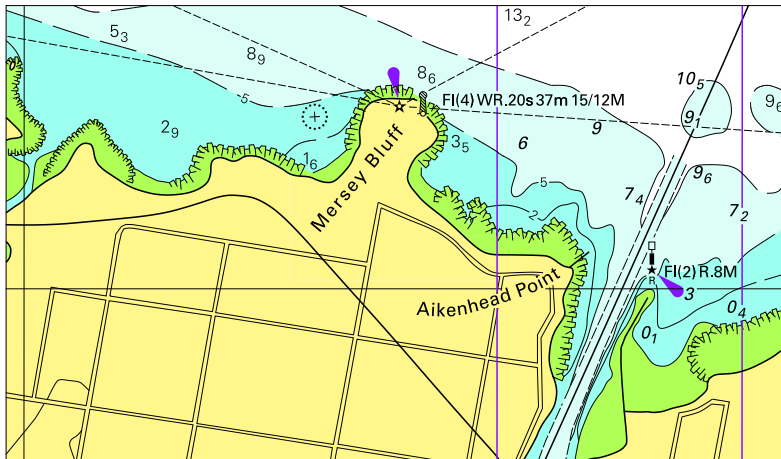
(112.4 x 88.1mm)

To accompany Australian Notice to Mariners 308/2010



© Commonwealth of Australia 2010
Block for chart Aus 174
(35.2 x 15.6mm)

To accompany Australian Notice to Mariners 309/2010



Block for chart Aus 164 © Commonwealth of Australia 2010 (103.5 x 60.4mm)

