



12 March 2010

Edition 5

Australian Notices to Mariners are the authority for correcting Australian Charts and Publications

AUSTRALIAN NOTICES TO MARINERS

Notices 239 – 280 

Published fortnightly by the Australian Hydrographic Service

Commodore R. NAIRN RAN
Hydrographer of Australia

SECTIONS.

- I. **Australian Notices to Mariners, including blocks and notes.**
- II. **Hydrographic Reports.**
- III. **Navigational Warnings.**

SUPPLEMENTS.

- I. **Tracings**
- II. **Cumulative List of Australian Notices to Mariners.**
- III. **Temporary and Preliminary Notices in force.**
- IV. **Amendments to Admiralty List of Lights and Fog Signals (Vol K),
Radio Signals (NP 281(2), 282, 283(2), 285, 286(4)) and Sailing
Directions (NP 9, 13, 14, 15, 33, 34, 35, 36, 39, 44, 51, 60, 61, 62, 100, 136).**

© Commonwealth of Australia 2010

This work is copyright. Apart from any use permitted under the Copyright Act 1968, no part may be reproduced by any process, adapted, communicated or commercially exploited without prior written permission from The Commonwealth represented by the Australian Hydrographic Service.

IMPORTANT NOTICE

This edition of Notices to Mariners includes all significant information affecting AHS products which the AHS has become aware of since the last edition. All reasonable efforts have been made to ensure the accuracy and completeness of the information, including third party information, on which these updates are based. The AHS regards third parties from which it receives information as reliable, however the AHS cannot verify all such information and errors may therefore exist. The AHS does not accept liability for errors in third party information.

GENERAL INSTRUCTIONS

The substance of these notices should be inserted on the charts affected.

Bearings are referred to the true compass and are reckoned clockwise from North; those relating to lights are given as seen by an observer from seaward. Positions quoted in permanent notices relate to the horizontal datum for the chart(s). When preliminary or temporary notices affect multiple charts, positions will be provided in relation to only one horizontal datum and that datum will be specified. When the multiple charts do not have a common horizontal datum, mariners will be required to adjust the position(s) for those charts not on the specified datum. The range quoted for a light is its nominal range. Depths are with reference to the chart datum of each chart. Heights are above mean high water springs or mean higher high water, as appropriate.

The capital letter (P) or (T) after the number of any notice denotes a preliminary or temporary notice respectively, which are contained separately at the end of the permanent notices. A star (*) adjacent to the number of a notice indicates that the notice is based on original information.

REPORTING OF DANGERS

Mariners are particularly requested to notify the AUSTRALIAN HYDROGRAPHIC SERVICE, Locked Bag 8801 Wollongong, NSW 2500 (Fax 02-4223 6599, e-mail Hydro.NTM@defence.gov.au or, alternatively by filling in and submitting the [Hydrographic Notes](#) forms located on the web site – www.hydro.gov.au), immediately on the discovery of new dangers or suspected dangers to navigation. For changes or defects in aids to navigation notify AusSAR (Fax 02-6230 6868 or email rccaus@amsa.gov.au).

AUTHORISED USE

Copies of Australian notices are available free of charge from the Australian Hydrographic Service (AHS) website (www.hydro.gov.au) and through the eNotices (email) service (www.hydro.gov.au/enotices/enotices.htm).

Individual Notices may be copied for the purpose of inserting Notice substance on official charts and publications. Paper copies may be printed by chart agents and distributed to customers on a cost recovery basis. Participating chart agents are listed on the AHS website as providing a 'Paper Notices to Mariners' service (www.hydro.gov.au/prodserv/distributors/distributors.htm). Copies of the notices may not be sold for profit without prior written agreement.

NUMERICAL INDEX OF NOTICES TO MARINERS

Edition No 5

Notices	Aus Chart, INT Chart, ENC Cell, AHP
239.....	Aus 50, 249, 330, 631, 643, 679, 746, 786, 787, 823, AX 6032G, 6032S, AZ 61103, 61104, 61105, 61203, 61204, 61205, 61205A, 71002, 76103, 76104, AU319118, 319119, 320116, 320117, 420119, 435136, 5X84P1, 5XX609, 5125P2, NP 282
240.....	Amendment to Australian Seafarers Handbook AHP 20
241.....	Aus 199
242.....	Aus 200, AX 63200
243.....	Aus 216
244.....	Aus 209
245.....	Aus 219
246.....	Aus 219
247.....	Aus 221, 424, 812
248.....	Aus 220
249.....	Aus 220
250.....	Aus 509
251.....	Aus 508, 518, 628, 631
252.....	Aus 680
253.....	Aus 22, 309, AX 0309F, 72309
254.....	Aus 313, 4721, 4722, INT 721, 722, AX 0313F, 4721F, 4722F
255.....	Aus 32
256.....	Aus 50
257.....	Aus 415, 4708, INT 708, AX 0415F, 4708F
258.....	Aus 329, 331, 416, 745, 747
259.....	Aus 74
260.....	Aus 4070, 4714, INT 70, 714, AX 4714F
261.....	Aus 122
262.....	Aus 343, 345, 346, AX 0343E
263.....	Aus 777
264.....	Aus 137, 138
265.....	Aus 348, 349, 788, 789
266.....	Aus 143
267(T).....	Aus 236
268(T).....	Aus 238, AU5237X8
269(T).....	Aus 238, AU5237X8
270(T).....	Aus 236
271(T).....	Aus 245, AU5244X5
272(T).....	Aus 244, 245, 246, 247, AU424151, 5244X5
273(T).....	Aus 247, 265, AU424150
274(T).....	Aus 4060, 4602, INT 60, 602
275(T).....	Aus 24, AU5XXX24
276(T).....	Aus 40, 732, 733
277(T).....	Aus 742, AU421116
278(T).....	Aus 334, 754, AX 0334E, 0754E, 66002, AU432115
279(T).....	Aus 796, AU444147
280(T).....	Aus 150, 151, AU439145

ENC Cell	Notices
AU319118	239
AU319119	239
AU320116	239
AU320117	239
AU420119	239
AU421116	277(T)
AU424150	273(T)
AU424151	272(T)
AU432115	278(T)
AU435136	239
AU439145	280(T)
AU444147	279(T)
AU5XXX24	275(T)
AU5X84P1	239
AU5125P2	239
AU5237X8	268(T), 269(T)
AU5244X5	271(T), 272(T)
AU5XX609	239

239 AUSTRALIA - Product

Australian Hydrographic Service (AA447679, AA451244, AA457439, AA459522), British Admiralty (AA457733)

New Chart

Chart	Published	Title and description of amendments	Scale	Index Chart	Price
Aus 50	15/1/2010	Australia - North West Coast - Western Australia - Approaches to Broome 17° 48'·40 S - 18° 06'·10 S 121° 52'·50 E - 122° 21'·80 E <i>New chart referred to WGS84 datum and LAT.</i>	1:50 000	Aus 5000	\$35.00
Aus 631	29/1/2010	Papua New Guinea - North East Coast - Approaches to Sewa Bay 9° 57'·36 S - 10° 06'·00 S 150° 53'·94 E - 150° 59'·30 E <i>New metric chart providing improved coverage of the approaches to Sewa Bay.</i>	1:37 500	Aus 5000	\$35.00
Aus 679	29/1/2010	Papua New Guinea - New Britain - Duke of York Group 4° 04'·80 S - 4° 16'·32 S 152° 21'·00 E - 152° 34'·24 E Plan: Mioko Harbour 4° 11'·33 S - 4° 14'·40 S 152° 26'·00 E - 152° 30'·42 E <i>New chart providing improved coverage of Mioko Harbour.</i>	1:37 500 1:12 500	Aus 5000	\$35.00
Aus 746	29/1/2010	Australia - West Coast - Western Australia - Point Maud to Point Quobba 23° 04'·50 S - 24° 31'·00 S 112° 50'·60 E - 113° 50'·00 E <i>New metric chart providing improved coverage of the north west coast.</i>	1:150 000	Aus 5001	\$35.00
Aus 787	29/1/2010	Australia - South Coast - Victoria - Childers Cove to Cape Otway 38° 27'·00 S - 39° 40'·00 S 142° 32'·60 E - 143° 32'·00 E <i>New chart providing improved coverage of the western approaches to Bass Strait.</i>	1:150 000	Aus 5001	\$35.00

New Miscellaneous Chart

Chart	Published	Title	Scale	Remarks
AX 6032G	12/3/2010	Western Australia Exercise Area - GOP - Submarine and Surface Combination	1:900 000	Fleet use only.
AX 6032S	12/3/2010	Western Australia Exercise Area - Scenario - Submarine and Surface Combination	1:900 000	Fleet use only.

New Electronic Navigation Chart (Seafarer ENC)

Cell Name	Released	Title
AU319118	March 2010	Indian Ocean - Cell 11
AU319119	March 2010	Indian Ocean - Cell 10
AU320116	March 2010	Indian Ocean - Glomar Shoal
AU320117	March 2010	Indian Ocean - Cell 15
AU420119	March 2010	Western Australia - Solitary Island to Bedout Island
AU435136	March 2010	South Australia - Thistle Island to Sir Joseph Banks Group
AU5X84P1	March 2010	Western Australia - Port Denison
AU5XX609	March 2010	Coral Sea - Norfolk Island
AU5125P2	March 2010	South Australia - Cape Jervis

New Chart to be published shortly

<i>Chart</i>	<i>Title</i>	<i>Scale</i>	<i>Expected Publication Date</i>	<i>Expected Stock Availability</i>
Aus 643	Papua New Guinea - North East Coast - Approaches to Lae Plan: Port of Lae	1:50 000 1:7 500	12 March 2010	19 April 2010

New Edition to be published shortly

<i>Chart</i>	<i>Title</i>	<i>Scale</i>	<i>Expected Publication Date</i>	<i>Expected Stock Availability</i>
Aus 249	Australia - East Coast - Queensland - Approaches to Hay Point and Mackay	1:75 000	12 March 2010	19 April 2010
Aus 823	Australia - East Coast - Queensland - Percy Isles to Mackay	1:150 000	12 March 2010	19 April 2010

Chart permanently withdrawn

<i>Chart</i>	<i>On publication of new chart/edition</i>
Aus 50	Aus 50
Aus 631	Aus 631
Aus 679	Aus 679

Chart permanently withdrawn without replacement

Chart
Aus 330
Aus 786
AZ 61103
AZ 61104
AZ 61105
AZ 61203
AZ 61204
AZ 61205
AZ 61205A
AZ 71002
AZ 76103
AZ 76104

Admiralty publication

<i>NP No</i>	<i>Title</i>	<i>Date</i>	<i>Remarks</i>
NP 282	Admiralty List of Radio Signals Edition 2010/11.	11/3/2010	The 2009/10 edition is thereby cancelled.

Note: The 2010/11 edition includes a worldwide listing of known Automatic Identification System Aids to Navigation (AIS AtoN). The sections on Satellite Navigation Systems and Horizontal Datums on Charts are now published in the 2009 edition of The Mariners handbook.

For further details refer to the AHS website at www.hydro.gov.au for new edition and new chart stock arrival information.

When placing orders with a chart agent, mariners should advise whether their order pertains to the current edition or the new edition.

240 AUSTRALIA - Product - Amendment to Australian Seafarers Handbook AHP 20

Australian Hydrographic Service (AA454803, AA454804, AA454829, AA456570)

Page 12 and 13

Substitute accompanying pages for page 12 and 13

Page 29 Paragraph 2.5.1 (1) line2

Delete Queensland Transport*Insert* Department of Transport and Main Roads

Page 93 Paragraph 6.7.1 (6) line1

Delete Marine Safety Queensland*Insert* Maritime Safety Queensland

Page 89 Paragraph 6.4.4 (4) line 2

Delete Deratting Certificate*Insert* Ship Sanitation Certificate

Page 153 Paragraph 9.3.2 Limited coastal radio station table rows 2 and 4

Delete www.transport.qld.gov.au*Insert* www.msq.qld.gov.au

Page 225 Paragraph 12.5.1 Table for Queensland ports and operators rows 1, 9, 12, 13 and 20

Delete North Queensland Port Bulk Corporation*Insert* North Queensland Bulk Ports Corporation

Page 225 Paragraph 12.5.1 Table for Queensland ports and operators row 3

Delete Port of Brisbane Corporation (Port of Bundaberg)*Insert* Gladstone Ports Corporation

Page 225 Paragraph 12.5.1 Table for Queensland ports and operators rows 4, 5, 6, 7, 10, 14, 16, 17 and 18

Delete Far North Queensland Port Corporation Limited*Insert* Far North Queensland Ports Corporation Limited**241* AUSTRALIA - NEW SOUTH WALES - Botany Bay - Infrastructure; nav aids; maintained depths***Former Notice - 715(T)/2009 is cancelled*

Sydney Ports (AA451789 - AA451793, AA452760)

Aus 199 [1410/2009]

<i>Insert</i>	accompanying block	33° 58'.4 S	151° 12'.3 E
	dashed line, between	33° 58'.318 S	151° 12'.697 E
		33° 58'.239 S	151° 12'.553 E

242* AUSTRALIA - NEW SOUTH WALES - Port Jackson - North Head to Shark Island - Naval waters; submarine cable

Department of Defence (DHDB 1440966)

Aus 200 [146/2010]

<i>Insert</i>	accompanying block	33° 51'.3 S	151° 15'.5 E
<i>Delete</i>	submarine cable, between	33° 49'.65 S	151° 15'.75 E
		33° 48'.95 S	151° 17'.14 E

AX 63200 [193/2010]

<i>Insert</i>	accompanying block	33° 51'.3 S	151° 15'.5 E
<i>Delete</i>	submarine cable, between	33° 49'.65 S	151° 15'.75 E
		33° 48'.95 S	151° 17'.14 E

243* AUSTRALIA - NEW SOUTH WALES - Brisbane Water - Peeks Point - Buoy established
Maritime NSW (AA452608, AA452609)

Aus 216 [1351/2009]

Substitute	south cardinal spar buoy, without topmark for beacon	33° 26'.77 S	151° 21'.09 E
------------	--	--------------	---------------

244* AUSTRALIA - NEW SOUTH WALES - Port Stephens - One Tree Island to Stuart Island - Light beacons
Maritime NSW (AA452608, AA452609)

Aus 209 [1351/2009]

Substitute	starboard lateral light beacon, <i>Fl.G.</i> 3s, with topmark for beacon	32° 41'.73 S	152° 03'.25 E
	starboard lateral light beacon, <i>Fl.G.</i> 3s, with topmark for beacon	32° 43'.55 S	152° 02'.47 E
	port lateral light beacon, <i>Fl.R.</i> 3s, with topmark for beacon	32° 44'.43 S	152° 02'.02 E

245* AUSTRALIA - NEW SOUTH WALES - Cape Hawke Harbour - Light buoy established
Maritime NSW (AA452608, AA452609)

Aus 219 (plan, Cape Hawke Harbour) [1259/2009]

Insert	starboard lateral conical light buoy, <i>Fl.G.</i> 3s, without topmark	32° 10'.926 S	152° 30'.178 E
Delete	buoy	32° 10'.91 S	152° 30'.18 E

246* AUSTRALIA - NEW SOUTH WALES - Camden Haven - Light buoy established
Maritime NSW (AA452608, AA452609)

Aus 219 (plan, Camden Haven) [245/2010]

Substitute	port lateral cylindrical light buoy, <i>Fl.R.</i> 3s, without topmark for buoy	31° 38'.84 S	152° 48'.47 E
------------	--	--------------	---------------

247* AUSTRALIA - NEW SOUTH WALES - South Solitary Island - Legends southeastwards
Australian Hydrographic Service (AA456564)

Aus 221 [1045/2009]

Amend	legend to <i>ODAS</i>	30° 16'.5 S	153° 18'.2 E
	legend to <i>ODAS</i>	30° 16'.1 S	153° 24'.0 E

Aus 424 [103/2010]

Amend	legend to <i>ODAS</i>	30° 17'.6 S	153° 21'.4 E
-------	-----------------------	-------------	--------------

Aus 812 [195/2010]

Amend	legend to <i>ODAS</i>	30° 16'.5 S	153° 17'.4 E
	legend to <i>ODAS</i>	30° 16'.1 S	153° 23'.2 E

248* AUSTRALIA - NEW SOUTH WALES - Richmond River - Beacons established
Maritime NSW (AA452608, AA452609)

Aus 220 (plan, Richmond River Entrance) [147/2010]

Insert	beacon, with port lateral topmark	28° 52'.549 S	153° 34'.500 E
	beacon, with port lateral topmark	28° 52'.591 S	153° 34'.417 E
Delete	depth, 6m	28° 52'.57 S	153° 34'.42 E

249* AUSTRALIA - NEW SOUTH WALES - Brunswick River - Buoys withdrawn
Maritime NSW (AA452608, AA452609)

Aus 220 (plan, Brunswick River Entrance) [248/2010]

Delete	buoy	28° 32'.01 S	153° 32'.83 E
	buoy	28° 31'.99 S	153° 32'.99 E

250* PAPUA NEW GUINEA - Kegawam Islands - Light beacon established
National Maritime Safety Authority PNG (AA456357, AA456358)

Aus 509 [524/2008]

Insert	light beacon, <i>Fl.6s 8m 10M</i> , without topmark	10° 21'.06 S	151° 23'.08 E
Delete	light	10° 21'.2 S	151° 23'.1 E

251* PAPUA NEW GUINEA - Sewa Bay - Chart limit; legend
Australian Hydrographic Service (AA451244)

Aus 508 [1177/2008]

Insert	magenta limits, with legend <i>Aus 631</i> in SW corner, between	10° 04'.18 S	150° 53'.94 E
		10° 06'.00 S	150° 53'.94 E
		10° 06'.00 S	150° 59'.30 E
		10° 04'.18 S	150° 59'.30 E

Aus 518 [1418/2009]

Insert	magenta limits, with legend <i>Aus 631</i> in SW corner, between	10° 06'.00 S	150° 53'.94 E
		10° 06'.00 S	150° 59'.30 E
		9° 57'.60 S	150° 59'.30 E
		9° 57'.60 S	150° 53'.94 E
		10° 06'.00 S	150° 53'.94 E

Delete	magenta limits, with legend <i>Aus 631</i> , centred on	10° 00'.0 S	150° 57'.5 E
--------	---	-------------	--------------

Aus 628 [329/2008]

Insert	magenta legend, <i>Adjoining Chart Aus 631</i> , in N border	10° 05'.8 S	150° 56'.5 E
--------	--	-------------	--------------

Aus 631 [NC 29/1/2010]

Amend	corner coordinate to <i>9°57.60' S</i>	9° 57'.61 S	150° 59'.25 E
	print date to <i>29.01.2010</i> , outside N border	9° 57'.60 S	150° 59'.25 E

252* PAPUA NEW GUINEA - Duke of York Group - Depths; chart limits; chart note
Australian Hydrographic Service (AA451244)

Aus 680 [477/2009]

Insert	accompanying block A	4° 05'.0 S	152° 23'.0 E
	accompanying block B	4° 13'.0 S	152° 23'.0 E
	accompanying note	4° 19'.2 S	152° 09'.0 E

Note: block update for Aus 554 will be published in Edition 6.

253* AUSTRALIA - NORTHERN TERRITORY - Apsley Strait - Rock
ACV Botany Bay (AA456669, AA456672, AA456673)

Aus 22 [156/2010]

Substitute	rock which covers and uncovers, enclosed by danger circle with legend (<u>1_s</u>), for depth, 4 ₃ m	11° 23'.16 S	130° 24'.06 E
------------	---	--------------	---------------

Aus 309 [109/2010]

Insert	rock which covers and uncovers, and extend danger line W to enclose	11° 23'.16 S	130° 24'.06 E
--------	---	--------------	---------------

Delete	underwater rock	11° 23'.2 S	130° 24'.3 E
--------	-----------------	-------------	--------------

AX 0309F [109/2010]

Insert	rock which covers and uncovers, and extend danger line W to enclose	11° 23'.16 S	130° 24'.06 E
--------	---	--------------	---------------

Delete	underwater rock	11° 23'.2 S	130° 24'.3 E
--------	-----------------	-------------	--------------

AX 72309 [109/2010]

Insert	rock which covers and uncovers, and extend danger line W to enclose	11° 23'.16 S	130° 24'.06 E
--------	---	--------------	---------------

Delete	underwater rock	11° 23'.2 S	130° 24'.3 E
--------	-----------------	-------------	--------------

254 INDONESIA - Pulau Liran - Light altered

BA Notice 8/954/2010 (AA455237)

Aus 313 [998/2009]

Amend	light to <i>F(4)40s 85m 23M</i>	8° 03'.0 S	125° 44'.0 E
-------	---------------------------------	------------	--------------

Aus 4721 (INT 721) [1160/2009]

Amend	light to <i>F(4)23M</i>	8° 03'.0 S	125° 44'.0 E
-------	-------------------------	------------	--------------

Aus 4722 (INT 722) [1160/2009]

Amend	light to <i>F(4)23M</i>	8° 03'.0 S	125° 44'.0 E
-------	-------------------------	------------	--------------

AX 0313F [998/2009]

Amend	light to <i>F(4)40s 85m 23M</i>	8° 03'.0 S	125° 44'.0 E
-------	---------------------------------	------------	--------------

AX 4721F [1160/2009]

Amend	light to <i>F(4)23M</i>	8° 03'.0 S	125° 44'.0 E
-------	-------------------------	------------	--------------

AX 4722F [1160/2009]

Amend	light to <i>F(4)23M</i>	8° 03'.0 S	125° 44'.0 E
-------	-------------------------	------------	--------------

255* AUSTRALIA - WESTERN AUSTRALIA - Wyndham - Nav aids

CGL Wyndham Port (AA456492, AA457410, AA457411)

Aus 32 (plan, Approaches to Wyndham Wharf) [366/2009]

Insert	light, <i>Q(3)G.4s 8m 3M</i>	15° 16'.120 S	128° 05'.449 E
	starboard lateral spar light buoy, <i>F(2)G.4s</i> , with topmark	15° 20'.759 S	128° 06'.632 E

Move	light buoy to	15° 18'.81 S	128° 05'.79 E
		15° 19'.10 S	128° 05'.85 E

Substitute	port lateral light beacon, <i>F(2)R.4s 3M No2</i> , with topmark for beacon	15° 17'.89 S	128° 05'.05 E
------------	---	--------------	---------------

256* AUSTRALIA - WESTERN AUSTRALIA - Broome - Anchorages; ZOC diagram
 Australian Hydrographic Service (AA455547)

Aus 50 [NC 15/1/2010]

Insert	accompanying block	18° 01'.0 S	122° 16'.0 E
Substitute	accompanying ZOC diagram	17° 55'.0 S	122° 19'.0 E

257* AUSTRALIA - WESTERN AUSTRALIA - Exmouth Plateau - Well
 Woodside Energy Ltd (AA455230)

Aus 415 [113/2010]

Insert	depth, 1312m, enclosed by danger circle with legend <i>Well</i>	19° 23'.9 S	114° 20'.0 E
--------	--	-------------	--------------

Aus 4708 (INT 708) [113/2010]

Insert	depth, 1312m, enclosed by danger circle with legend <i>Well</i>	19° 23'.9 S	114° 20'.0 E
--------	--	-------------	--------------

Delete	depth, 1350m	19° 13'.0 S	114° 23'.0 E
--------	--------------	-------------	--------------

AX 0415F [113/2010]

Insert	depth, 1312m, enclosed by danger circle with legend <i>Well</i>	19° 23'.9 S	114° 20'.0 E
--------	--	-------------	--------------

AX 4708F [113/2010]

Insert	depth, 1312m, enclosed by danger circle with legend <i>Well</i>	19° 23'.9 S	114° 20'.0 E
--------	--	-------------	--------------

Delete	depth, 1350m	19° 13'.0 S	114° 23'.0 E
--------	--------------	-------------	--------------

258* AUSTRALIA - WESTERN AUSTRALIA - Point Maud to Point Quobba - Chart limits; legends
 Australian Hydrographic Service (AA451244)

Aus 329 [1364/2009]

Delete	magenta legend, Adjoining Chart Aus 330, in S border	22° 46'.0 S	113° 05'.0 E
--------	--	-------------	--------------

Aus 331 [209/2010]

Insert	magenta limits, with legend <i>Aus 746</i> in SW corner, between	24° 09'.75 S	112° 50'.52 E
		24° 31'.08 S	112° 50'.52 E
		24° 31'.08 S	113° 49'.92 E
		24° 09'.75 S	113° 49'.92 E

Delete	magenta legend, Adjoining Chart Aus 330, in N border	24° 09'.8 S	112° 45'.0 E
--------	--	-------------	--------------

Aus 416 [209/2010]

Insert	magenta limits, with legend <i>Aus 746</i> in NW corner, between	24° 31'.0 S	112° 50'.6 E
		24° 31'.0 S	113° 50'.0 E
		23° 04'.6 S	113° 50'.0 E
		23° 04'.6 S	112° 50'.6 E
		24° 31'.0 S	112° 50'.6 E
	magenta limits, with legend <i>Aus 745</i> in NW corner, between	23° 08'.2 S	113° 13'.7 E
		23° 08'.2 S	114° 13'.1 E
		21° 40'.9 S	114° 13'.1 E
		21° 40'.9 S	113° 13'.7 E
		23° 08'.2 S	113° 13'.7 E

Delete	magenta limits, with legend Aus 330, centred on	23° 40'.0 S	113° 00'.0 E
--------	---	-------------	--------------

Aus 745 [1021/2008]

Insert	magenta legend, <i>Adjoining Chart Aus 746</i> , in S border	23° 08'.3 S	113° 32'.5 E
--------	--	-------------	--------------

Aus 747 [63/2009]

Insert	magenta legend, <i>Adjoining Chart Aus 746</i> , in N border	24° 22'.0 S	113° 07'.5 E
--------	--	-------------	--------------

259* AUSTRALIA - WESTERN AUSTRALIA - Slope Island - Depth
 Australian Hydrographic Service (AA455161)

Aus 74 (plan, Slope Island) [1427/2009]

Insert	depth, 8m	26° 05'.750 S	113° 25'.214 E
--------	-----------	---------------	----------------

260 INDIAN OCEAN - Schlich Seamount to Von Hochstetter Seamount - Depths
BA Notice 8/926/2010 (AA455236)

Aus 4070 (INT 70) [873/2009]

Substitute	depth, 198m, enclosed by danger circle for depth, 428m and enclosing contours	32° 30'.0 S	82° 22'.0 E
	depth, 359m, enclosed by danger circle for depth, 426m	32° 49'.0 S	84° 02'.0 E
	depth, 167m, enclosed by danger circle for depth, 513m and enclosing contours	33° 45'.0 S	82° 56'.0 E
	depth, 200m, enclosed by danger circle for depth, 469m and enclosing contours	34° 05'.0 S	82° 49'.0 E

Aus 4714 (INT 714) [157/2009]

Insert	depth, 200m, enclosed by danger circle	34° 05'.0 S	82° 49'.0 E
Substitute	depth, 198m, enclosed by danger circle for depth, 428m and enclosing contours	32° 30'.0 S	82° 22'.0 E
	depth, 359m, enclosed by danger circle for depth, 426m	32° 49'.0 S	84° 02'.0 E
	depth, 167m, enclosed by danger circle for depth, 513m and enclosing contours	33° 45'.0 S	82° 56'.0 E
Delete	depth, 469m, and enclosing contours	34° 08'.0 S	82° 45'.0 E

AX 4714F [157/2009]

Insert	depth, 200m, enclosed by danger circle	34° 05'.0 S	82° 49'.0 E
Substitute	depth, 198m, enclosed by danger circle for depth, 428m and enclosing contours	32° 30'.0 S	82° 22'.0 E
	depth, 359m, enclosed by danger circle for depth, 426m	32° 49'.0 S	84° 02'.0 E
	depth, 167m, enclosed by danger circle for depth, 513m and enclosing contours	33° 45'.0 S	82° 56'.0 E
Delete	depth, 469m, and enclosing contours	34° 08'.0 S	82° 45'.0 E

261* AUSTRALIA - SOUTH AUSTRALIA - Thevenard - Lights altered

HydroSurvey Australia (AA455078, AA455605)

Aus 122 (plan, Thevenard Wharf) [1273/2009]

Amend	light to <i>F.Bu (occas) (F Day (occas))</i>	32° 08'.94 S	133° 38'.55 E
	light to <i>F.Bu (occas) (F Day (occas))</i>	32° 08'.93 S	133° 38'.57 E
	light to <i>F.R (occas) (F Day (occas))</i>	32° 08'.93 S	133° 38'.59 E
	light to <i>F.R (occas) (F Day (occas))</i>	32° 08'.93 S	133° 38'.64 E

262* AUSTRALIA - SOUTH AUSTRALIA - Kangaroo Island to West Cape - Scientific instruments established
South Australian Research and Development Institute (AA452888, AA457378)

Aus 343 [42/2010]

Insert	foul ground symbol with legend, ODAS	36° 11'.42 S	135° 51'.42 E
	foul ground symbol with legend, ODAS	35° 14'.26 S	136° 41'.59 E
Delete	depth, 35m	35° 14'.4 S	136° 41'.5 E
	depth, 301m	36° 11'.1 S	135° 51'.6 E

Aus 345 [42/2010]

Insert	foul ground symbol with legend, ODAS	35° 14'.2 S	136° 41'.8 E
Delete	depth, 19fm and enclosing contour	35° 14'.3 S	136° 41'.6 E

Aus 346 [1240/2008]

Insert	foul ground symbol with legend, ODAS	36° 11'.35 S	135° 51'.50 E
--------	--------------------------------------	--------------	---------------

AX 0343E [42/2010]

Insert	foul ground symbol with legend, ODAS	36° 11'.35 S	135° 51'.50 E
	foul ground symbol with legend, ODAS	35° 14'.26 S	136° 41'.59 E
Delete	depth, 35m	35° 14'.4 S	136° 41'.5 E
	depth, 301m	36° 11'.1 S	135° 51'.6 E

263* AUSTRALIA - SOUTH AUSTRALIA - Wallaroo - Light beacons altered

Former Notice - 173(T)/2008 is cancelled

Department for Transport, Energy and Infrastructure SA Notice 5/2009 (AA455649)

Aus 777 (plan, Wallaroo Bay) [245/2008]

Amend	light beacon to <i>Q.R No2</i>	33° 54'.31 S	137° 33'.86 E	
	light beacon to <i>Fl.G.2s No3</i>	33° 54'.34 S	137° 34'.35 E	
	light beacon to <i>Fl.R.2s No4</i>	33° 54'.28 S	137° 34'.35 E	
	light beacon to <i>Fl.R.2s No6</i>	33° 54'.28 S	137° 34'.79 E	
	light beacon to <i>Fl.G.2s No7</i>	33° 54'.31 S	137° 35'.25 E	
	light beacon to <i>Fl.R.2s No8</i>	33° 54'.26 S	137° 35'.25 E	
	light beacon to <i>Fl.G.2s No9</i>	33° 54'.30 S	137° 35'.81 E	
	light beacon to <i>Fl.R.2s No10</i>	33° 54'.23 S	137° 35'.79 E	
	light beacon to <i>Q.G No11</i>	33° 54'.43 S	137° 36'.29 E	
	light beacon to <i>Q.R No12</i>	33° 55'.19 S	137° 36'.61 E	
	Delete	light beacon	33° 54'.36 S	137° 33'.82 E

264* AUSTRALIA - SOUTH AUSTRALIA - Adelaide - Bearings

HydroSurvey Australia (AA456484)

Aus 137 [118/2010]

Amend	bearing to <i>077.7° - 257.7°</i>	34° 47'.47 S	138° 27'.18 E
-------	-----------------------------------	--------------	---------------

Aus 138 [1365/2009]

Amend	bearing to <i>060.4°</i>	34° 47'.37 S	138° 27'.71 E
	bearing to <i>240.4°</i>	34° 47'.02 S	138° 28'.44 E

265* AUSTRALIA - VICTORIA - Childers Cove to Cape Otway - Chart limits; legends
 Australian Hydrographic Service (AA451244)

Aus 348 [1082/2008]

Delete magenta limits, with legend Aus 786, centred on 38° 30'.0 S 141° 40'.0 E

Aus 349 [164/2010]

Insert magenta limits, with legend *Aus 787* in SW corner, between
 39° 40'.09 S 142° 32'.52 E
 39° 40'.09 S 143° 31'.92 E
 38° 27'.09 S 143° 31'.92 E
 38° 27'.09 S 142° 32'.52 E
 39° 40'.09 S 142° 32'.52 E

magenta limits, with legend *Aus 140* in SE corner, between
 38° 37'.49 S 141° 31'.50 E
 38° 37'.49 S 142° 05'.54 E
 38° 12'.09 S 142° 05'.54 E
 38° 12'.09 S 141° 31'.50 E

magenta limits, with legend *Aus 141* in SW corner, between
 38° 34'.47 S 142° 10'.92 E
 38° 34'.47 S 142° 33'.29 E
 38° 20'.09 S 142° 33'.29 E
 38° 20'.09 S 142° 10'.92 E
 38° 34'.47 S 142° 10'.92 E

Delete magenta limits, with legend Aus 786, centred on legend, (see Aus 141), centred on
 38° 35'.0 S 142° 00'.0 E
 38° 38'.8 S 142° 59'.3 E

Aus 788 [1368/2009]

Insert magenta legend, *Adjoining Chart Aus 787*, in W border
 38° 52'.5 S 143° 20'.0 E

Aus 789 [966/2008]

Insert magenta legend, *Adjoining Chart Aus 787*, in W border
 39° 22'.5 S 143° 28'.0 E

266* AUSTRALIA - VICTORIA - Port Phillip - Anonyma Shoal - Light beacon altered
 Parks Victoria (AA451264)

Aus 143 [1370/2009]

Amend light beacon to VQ(3)5s 37° 57'.5 S 144° 59'.5 E

Note: new chart Aus155 has been updated.

267(T)/2010 AUSTRALIA - QUEENSLAND - Moreton Bay - North Stradbroke Island - Amity - Harbour works completed*Former Notice* - 1117(T)/2009 is cancelled

Maritime Safety Queensland Notice 282(T)/2009, 315(T)/2009, 605(T)/2009 (AA405402, AA411788, AA428787)

Cancel this notice on receipt.

Chart formerly affected – Aus 236**268(T)/2010 AUSTRALIA - QUEENSLAND - Brisbane River - Quarries Reach to Parker Island Reach - Harbour works***Former Notice* - 1146(T)/2008 is cancelled

Maritime Safety Queensland Notice 190(T)/2007, 296(T)/2007, 677(T)/2008, 212(T)/2010 (AA237697, AA243715, AA366844, AA243714, AA459560)

Harbour works are in progress for the Gateway Bridge development.

A silt curtain and temporary causeway exist from the northern bank of the river to position 27° 26'.62 S 153° 06'.01 E. Another two silt curtains exist from the southern bank of the river to positions 27° 26'.77 S 153° 06'.03 E and 27° 26'.72 S 153° 06'.15 E. The offshore ends are marked by special light buoys.

A 6 knot no wash speed limit zone marked by special light buoys exists between:

27° 26'.67 S 153° 05'.74 E
 27° 26'.45 S 153° 06'.39 E
 27° 26'.60 S 153° 06'.50 E
 27° 26'.66 S 153° 06'.50 E
 27° 26'.89 S 153° 05'.87 E
 27° 26'.67 S 153° 05'.74 E

Special light buoys, *Fl. Y.2-5s*, exist in positions:

27° 26'.74 S 153° 05'.79 E
 27° 26'.52 S 153° 06'.44 E
 27° 26'.60 S 153° 06'.50 E
 27° 26'.83 S 153° 05'.83 E

During construction a 3 metre reduction in vertical clearance will exist, with 54 metres in the centre and 50 metres at the edge of the cutting.

Mariners with an aircraft of over 45 metres are required to obtain written permission from the Manager Vessel Traffic Management at Brisbane Port Control on 07 33051700 prior to proceeding under the Gateway Bridges.

Mariners are advised to navigate with caution in the area.

Chart temporarily affected – Aus 238 - AU5237X8**269(T)/2010 AUSTRALIA - QUEENSLAND - Brisbane River - Quarries Reach - Wreck**

Maritime Safety Queensland Notice 200(T)/2010 (AA458919)

A wreck marked by a special light buoy, *Fl. Y.2-5s*, exists in position 27° 26'.81 S 153° 05'.34 E.

Mariners are advised to navigate with caution in the area.

Chart temporarily affected – Aus 238 - AU5237X8**270(T)/2010 AUSTRALIA - QUEENSLAND - Moreton Bay - Scarborough - Dredging operations completed***Former Notice* - 1378(T)/2009 is cancelled

Maritime Safety Queensland Notice 769(T)/2009 (AA440184)

Cancel this notice on receipt.

Chart formerly affected – Aus 236

271(T)/2010 AUSTRALIA - QUEENSLAND - Gladstone - Curtis Island - Drilling operations*Former Notice - 1447(T)/2009 is cancelled**Date - Until 10 April 2010*

Maritime Safety Queensland Notice 210(T)/2010 (AA459559)

The jack-up barge *Sideson 3* and MT *Wandana* and *Lorraine* are conducting drilling operations in the following positions:

23° 46'.87 S 151° 12'.29 E	23° 46'.89 S 151° 12'.25 E
23° 46'.94 S 151° 12'.22 E	23° 46'.98 S 151° 12'.17 E
23° 47'.00 S 151° 12'.15 E	23° 46'.95 S 151° 12'.05 E
23° 46'.97 S 151° 12'.08 E	23° 47'.01 S 151° 12'.10 E
23° 47'.03 S 151° 12'.13 E	23° 47'.04 S 151° 12'.15 E
23° 47'.04 S 151° 12'.20 E	23° 47'.06 S 151° 12'.23 E
23° 47'.47 S 151° 12'.75 E	23° 47'.51 S 151° 12'.73 E
23° 47'.55 S 151° 12'.70 E	23° 47'.51 S 151° 12'.79 E
23° 47'.55 S 151° 12'.80 E	23° 47'.55 S 151° 12'.77 E
23° 47'.57 S 151° 12'.80 E	23° 47'.58 S 151° 12'.76 E
23° 47'.61 S 151° 12'.79 E	23° 47'.60 S 151° 12'.81 E
23° 47'.63 S 151° 12'.83 E	23° 47'.66 S 151° 12'.85 E
23° 47'.71 S 151° 12'.88 E	23° 47'.44 S 151° 12'.76 E
23° 47'.57 S 151° 12'.70 E	23° 47'.47 S 151° 12'.80 E
23° 47'.60 S 151° 12'.75 E	23° 47'.54 S 151° 12'.82 E
23° 47'.58 S 151° 12'.75 E	23° 47'.59 S 151° 12'.83 E
23° 47'.62 S 151° 12'.78 E	23° 47'.62 S 151° 12'.86 E
23° 47'.65 S 151° 12'.76 E	23° 47'.62 S 151° 12'.88 E
23° 47'.68 S 151° 12'.84 E	23° 47'.47 S 151° 12'.74 E
23° 47'.73 S 151° 12'.89 E	23° 47'.55 S 151° 12'.75 E
23° 47'.66 S 151° 12'.82 E.	

All vessels will display appropriate shapes and lights and will monitor VHF Ch 13 and Ch 16.

Mariners are advised to navigate with caution in the area.

Chart temporarily affected – Aus 245 - AU5244X5**272(T)/2010 AUSTRALIA - QUEENSLAND - Gladstone - Scientific instruments recovered***Former Notice - 1448(T)/2009 is cancelled*

Maritime Safety Queensland Notice 819(T)/2009 (AA444934)

Cancel this notice on receipt.

Chart formerly affected – Aus 244 – Aus 245 – Aus 246 – Aus 247 - AU424151 - AU5244X5**273(T)/2010 AUSTRALIA - QUEENSLAND - Keppel Bay - Mud Island to Centre Bank - Scientific instruments recovered***Former Notice - 900(T)/2009 is cancelled*

Maritime Safety Queensland Notice 476(T)/2009 (AA418907)

Cancel this notice on receipt.

Chart formerly affected – Aus 247 – Aus 265 - AU424150**274(T)/2010 AUSTRALIA - CORAL SEA - Capel Bank to Nova Bank - Sufficiently promulgated***Former Notice - 835(P)/2008 is cancelled*

US Notice 27/602/2008 (AA353578)

Cancel this notice on receipt.

Chart formerly affected – Aus 4060 (INT 60) – Aus 4602 (INT 602)

275(T)/2010 AUSTRALIA - NORTHERN TERRITORY - Darwin - Cullen Bay - Light buoy re-established
Former Notice - 222(T)/2009 is cancelled
 Darwin Port Corporation (AA450256)

Cancel this notice on receipt.

Chart formerly affected – Aus 24 - AU5XXX24

276(T)/2010 AUSTRALIA - WESTERN AUSTRALIA - Irvine Island - Scientific instruments
Date - Until 30 June 2010
 Department of Transport Notice 32A/2010 (AA458929)

Scientific instruments exist as follows:

16° 04'.9 S 123° 33'.3 E	lit buoy, <i>F(5)Y.20s</i>
16° 05'.7 S 123° 32'.5 E	lit buoy, <i>F(5)Y.20s</i>
16° 06'.2 S 123° 33'.4 E	subsurface.

Chart temporarily affected – Aus 40 – Aus 732 – Aus 733

277(T)/2010 AUSTRALIA - WESTERN AUSTRALIA - Regnard Bay - Scientific instruments
Date - Until 31 May 2010
 Department of Transport Notice 34A/2010 (AA458922)

Special light buoys, *F(5)Y.20s*, exist in positions:
 20° 49'.72 S 116° 21'.08 E
 20° 49'.42 S 116° 21'.18 E.

Chart temporarily affected – Aus 742 - AU421116

278(T)/2010 AUSTRALIA - WESTERN AUSTRALIA - Rottnest Island - Military exercise
Former Notice - 232(T)/2010 is cancelled
Date - Until 20 March 2010
 Department of Defence (AA458390)

A 915m restricted zone exists around the following area from 11 March to 19 March 2010:

31° 54'.0 S 115° 22'.0 E
31° 57'.0 S 115° 22'.0 E
31° 57'.0 S 115° 23'.8 E
31° 54'.0 S 115° 23'.8 E.

MV *Seahorse Standard* is in the vicinity and will promulgate regular warnings on VHF Ch 16.

Chart temporarily affected – Aus 334 – Aus 754 – AX 0334E – AX 0754E – AX 66002 - AU432115

279(T)/2010 AUSTRALIA - TASMANIA - Storm Bay - Scientific instruments
Date - Until 25 March 2010
 Marine and Safety Tasmania Notice M31/2010 (AA459213)

Scientific instruments marked by buoys exist in position 43° 18'.0 S 147° 39'.6 E.

Chart temporarily affected – Aus 796 - AU444147

280(T)/2010 AUSTRALIA - VICTORIA - Western Port - Phillip Island - McHaffies Point - Light altered
Date - Until 9 April 2010
 Victorian Notice 25T/2010 (AA458382)

The light (38° 27'.96 S 145° 09'.99 E) has been temporarily altered to *Oc.WRG.5s 18m 16M*.

Chart temporarily affected – Aus 150 – Aus 151 - AU439145

12 March 2010

HYDROGRAPHIC REPORTS

<i>Locality</i>	<i>Report</i>	<i>Ship/Authority</i>	<i>Observer</i>
TAS- South Coast	Index chart Aus 5001	Tasmanian Map Centre	
NT- Apsley Strait	Rock	ACV <i>Botany Bay</i>	

NAVIGATION WARNINGS

The following radio messages have been received during the period to 12 March 2010. Signal copies of these messages may be destroyed. It is recommended that the reprint of Navigational Warnings should be kept in a file or a book divided into areas. Cancellation should be made on receipt of signals and reprints.

Rigs on location other than those listed in the latest Section III summary are the subject of Radio Navigational Warnings. Rigs in transit will not be the subject of Warnings.

AUSCOAST WARNING

- 049 Drill rig *Stena Clyde* in position 20° 29'.93 S 114° 57'.21 E. 2.5M clearance requested.
 050 Cancelled.
 051 Cancelled.
 052 Cancelled.
 053 Special purpose vessel *Geo Celtic* conducting seismic survey in area bounded by 20° 45'.0 S to 21° 30'.0 S and 112° 30'.0 E to 114° 40'.0 E. 6M clearance requested.
 054 Cancelled.
 055 Cancelled.
 056 Cancelled.
 057 Cancelled.
 058 Cancelled.
 059 Cancelled.
 060 Drill rig *Ocean Shield* in position 10° 54'.01 S 126° 45'.26 E. 2.5M clearance requested.
 061 Cancelled.
 062 Cancelled.
 063 Special purpose vessel *Beaufort Explorer* conducting seismic survey in area bounded by 12° 00'.0 S to 14° 15'.0 S and 127° 10'.0 E to 130° 00'.0 E. 5M clearance requested.
 064 Cancelled.
 065 Cancelled.
 066 Special purpose vessel *Pacific Crest* conducting side scan survey towing 0.2M cable in area bounded by 11° 17'.43 S to 12° 19'.74 S and 126° 57'.79 E to 130° 39'.74 E. 2M clearance requested.
 067 Cancelled.
 068 Cancelled.

NAVAREA X WARNINGS

Nil.

Navigational warnings in force as at 120001UTC MAR 10.**Auscoast**

2009 297 304 306

2010 007 008 024 029 030 034 041 042 044 047 049 053 060 063 066

Navarea X

005

Summary of mobile drilling rigs as at 120001UTC MAR 10.

<i>Name</i>	<i>Position</i>
Ocean Patriot	38° 09'.71 S 148° 12'.97 E
Ocean Shield	10° 54'.01 S 126° 45'.26 E
Transocean Legend	13° 41'.53 S 122° 11'.29 E
Ensco 7500	19° 57'.20 S 114° 52'.70 E
Atwood Eagle	20° 35'.10 S 114° 36'.60 E
Jack Bates	20° 04'.24 S 113° 46'.46 E
Stena Clyde	20° 29'.93 S 114° 57'.21 E
Nan Hai 6	21° 26'.23 S 114° 02'.48 E
Ocean Epoch	21° 32'.30 S 114° 05'.60 E

III

NAVAREA XIV WARNINGS

Nil.

Navarea XIV warnings in force as at 120001UTC MAR 10.

2009 059

2010 003 006 007

1.7 Time Zones

1. The setting of time zones and daylight saving time in Australia is the responsibility of the State and Territory governments.
2. The Australian mainland has three time zones based on the longitudes of 120°, 142.5° and 150° East. These are known as:

Eastern Standard Time (EST):	UTC + 10
Central Standard Time (CST):	UTC + 9.5
Western Standard Time (WST):	UTC + 8

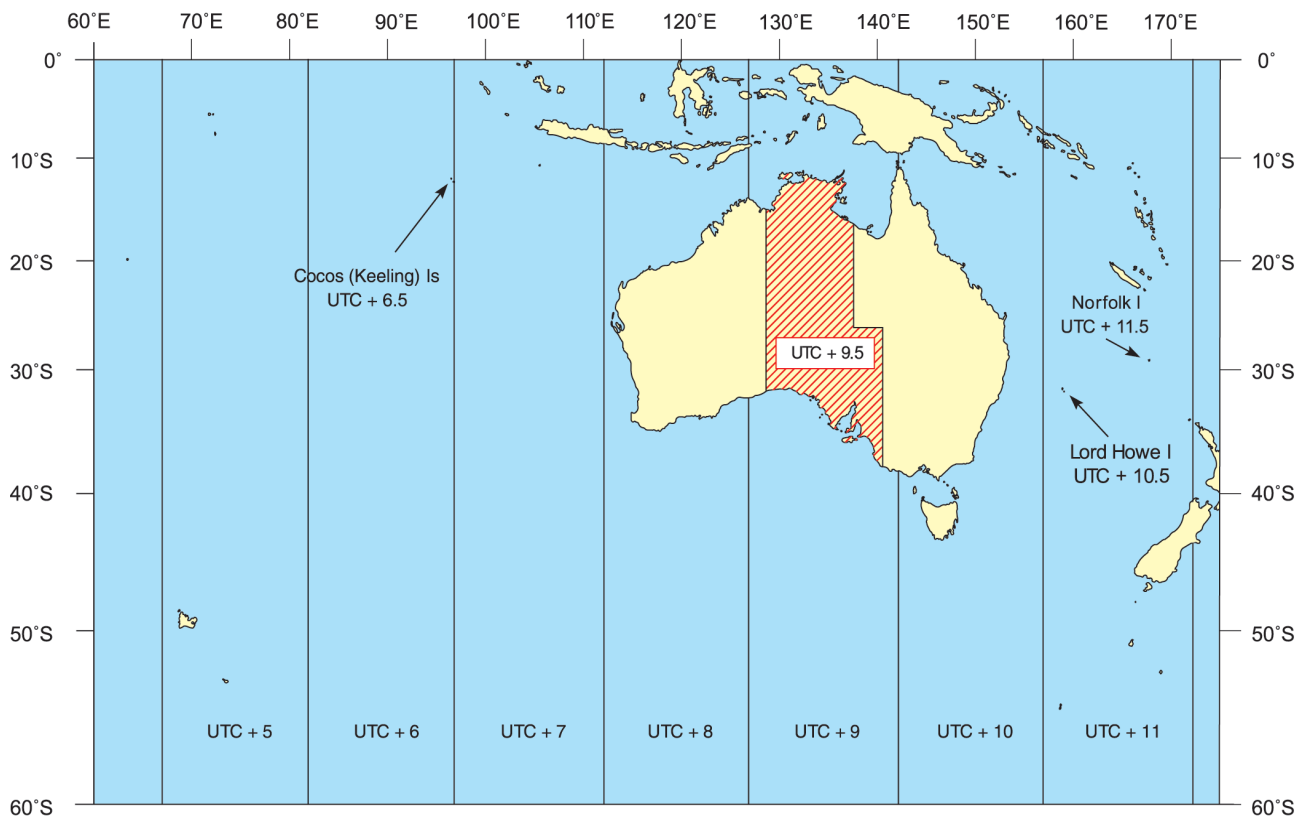
3. These boundaries have been modified by using the state boundaries such that towns which lie geographically in one zone generally adopt the time zone consistent with the majority of their state or territory.
4. **Note:** the New South Wales town of Broken Hill adopts the CST UTC + 9.5 time zone due to the close proximity to the South Australian and Northern Territory borders.

5. Australia's External Territories operate in the following time zones:

Lord Howe Island:	UTC + 10.5
Norfolk Island:	UTC + 11.5
Christmas Island:	UTC + 7
Macquarie Island:	UTC + 10
Cocos (Keeling) Islands:	UTC + 6.5
Australian Antarctic Territory	
Casey:	UTC + 8
Davis:	UTC + 7
Mawson:	UTC + 5

1.7.1 Daylight Saving Time

1. Daylight Saving Time (DST) involves advancing clocks by 1 hour during the summer months to transfer some of the daylight hours in the morning to the evening period. The benefits of this are cited as including additional time for recreation and energy savings due to the reduced need for artificial lighting.
2. Daylight Saving Time was first introduced into Australia during World War I as a wartime economy measure. It was implemented again during World War II. It became popular during the 1970's and is



now observed in many of the Australian States and Territories.

- The State and Territory Governments are responsible for the implementation of Daylight Saving Time. It can be varied to complement special events such as the Sydney 2000 Olympic Games.
- Daylight Saving Time is typically observed in Australia as follows:

New South Wales (including Lord Howe Island ¹): Victoria: Australian Capital Territory: South Australia: Tasmania:	First week of October to the first week of April
Northern Territory: Queensland: Western Australia: Norfolk Island: Christmas Island: Cocos (Keeling) Islands:	Not observed
Website:	www.australia.gov.au

Note:

- Lord Howe Island advances its clock forward to UTC+11 when DST is observed. When DST ends the Island reverts back to UTC+10.5.
- Daylight Savings Time arrangements are published by the Australian Hydrographic Service as a Temporary Notice to Mariners prior to Daylight Savings Time commencement. This Notice is cancelled when Daylight Savings Time ceases.
- Time Zones and Daylight Savings Time arrangements are also detailed in *Admiralty List of Radio Signals Volume 2*.

1.8 National Holidays

- Australian Public Holidays are determined and promulgated by the State and Territory Governments. There are approximately 12 public holidays observed in each state per calendar year.
- For the exact dates of moveable public holidays for a particular year, and for state and regional

public holidays, enquiries should be directed to the appropriate state body.

- The States Governments publish gazetted public holidays online at the following sites:

NSW:	www.industrialrelations.nsw.gov.au
VIC:	www.vic.gov.au
TAS:	www.wst.tas.gov.au
SA:	www.safework.sa.gov.au
WA:	www.commerce.wa.gov.au
NT:	www.nt.gov.au
QLD:	www.wageline.qld.gov.au
ACT:	www.cmd.act.gov.au

1.8.1 Australian Public Holidays

- Public holidays which are observed Australia wide are listed below.

New Years Day ¹	1 January
Australia Day ¹	26 January
ANZAC Day ²	25 April
Queens Birthday	2 nd Monday in June (except in WA where it is observed in September/October)
Christmas Day ¹	25 December
Boxing Day ³	26 December (exception SA where public holiday is called Proclamation Day)
Good Friday	late March / early April as gazetted
Easter Saturday	following Good Friday as gazetted
Easter Sunday	following Easter Saturday as gazetted
Easter Monday	following Easter Sunday as gazetted
Labour Day	as gazetted, varies by state

Notes:

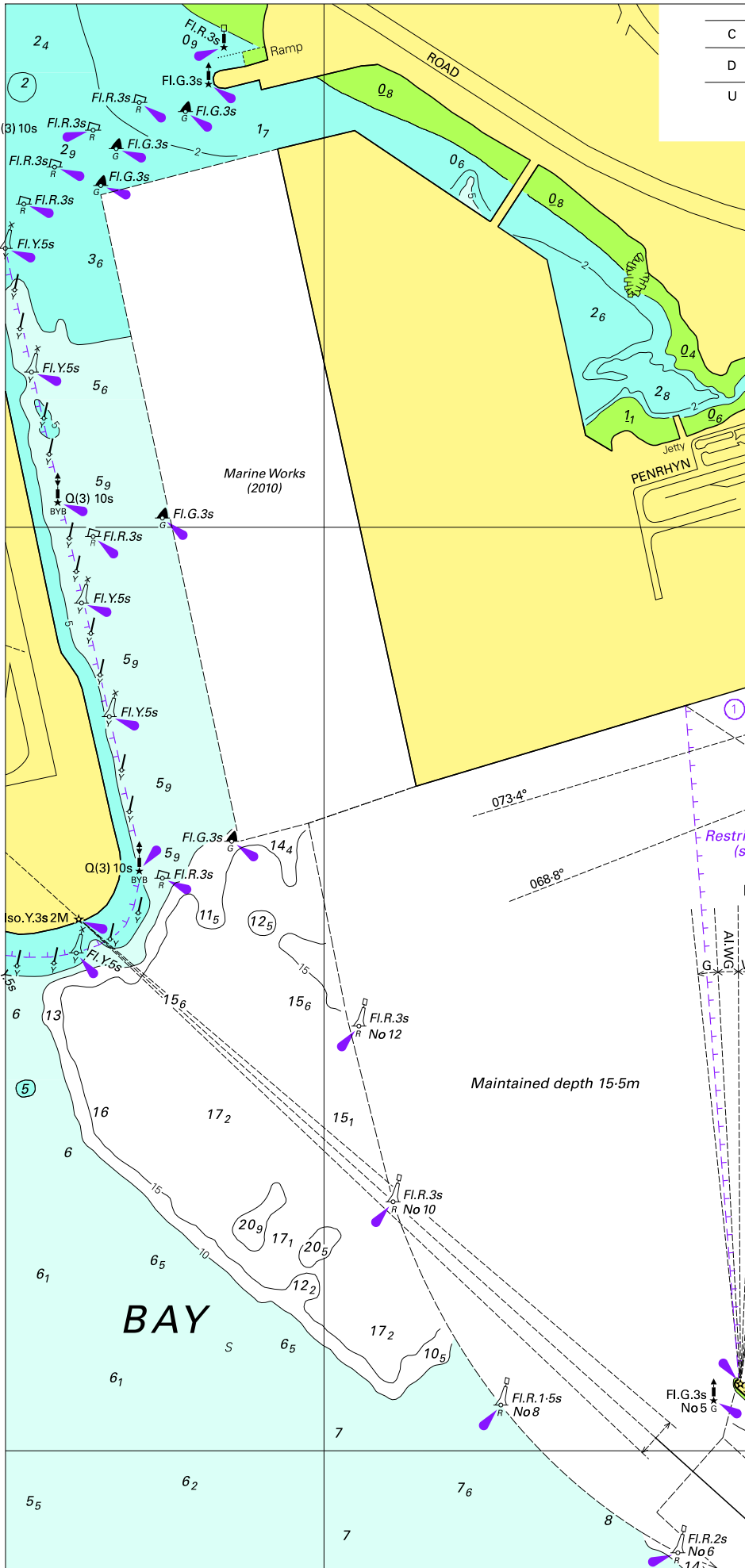
- If this holiday falls on a Saturday or Sunday it is generally observed on the Monday following.
- If this holiday falls on a Sunday it is generally observed on the Monday following. However official activities associated with ANZAC Day are always held on the 25 April.
- If this holiday falls on a Saturday or Sunday it is generally observed on the Monday or Tuesday following the Christmas Day holiday.

To accompany Australian Notice to Mariners 252/2010

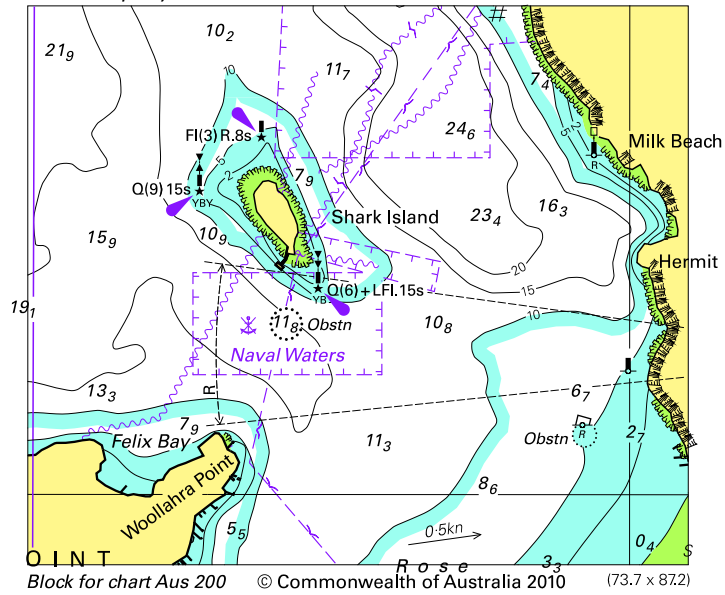
OMISSIONS FROM CHART

Certain information has been omitted from this chart. For details see the larger scale nautical charts and relevant nautical publications.

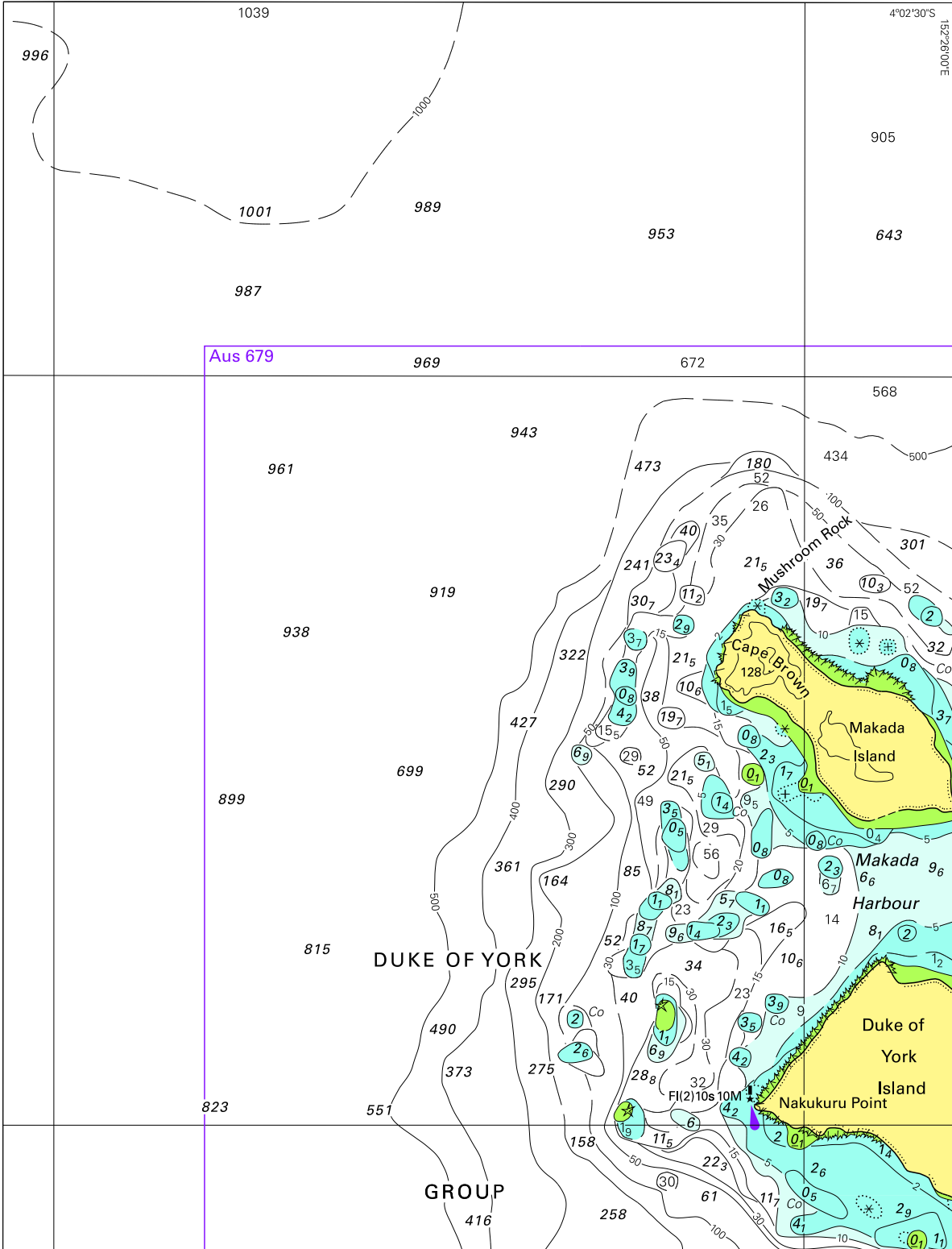
Note for chart Aus 680.



To accompany Australian Notice to Mariners 242/2010



To accompany Australian Notice to Mariners 252/2010

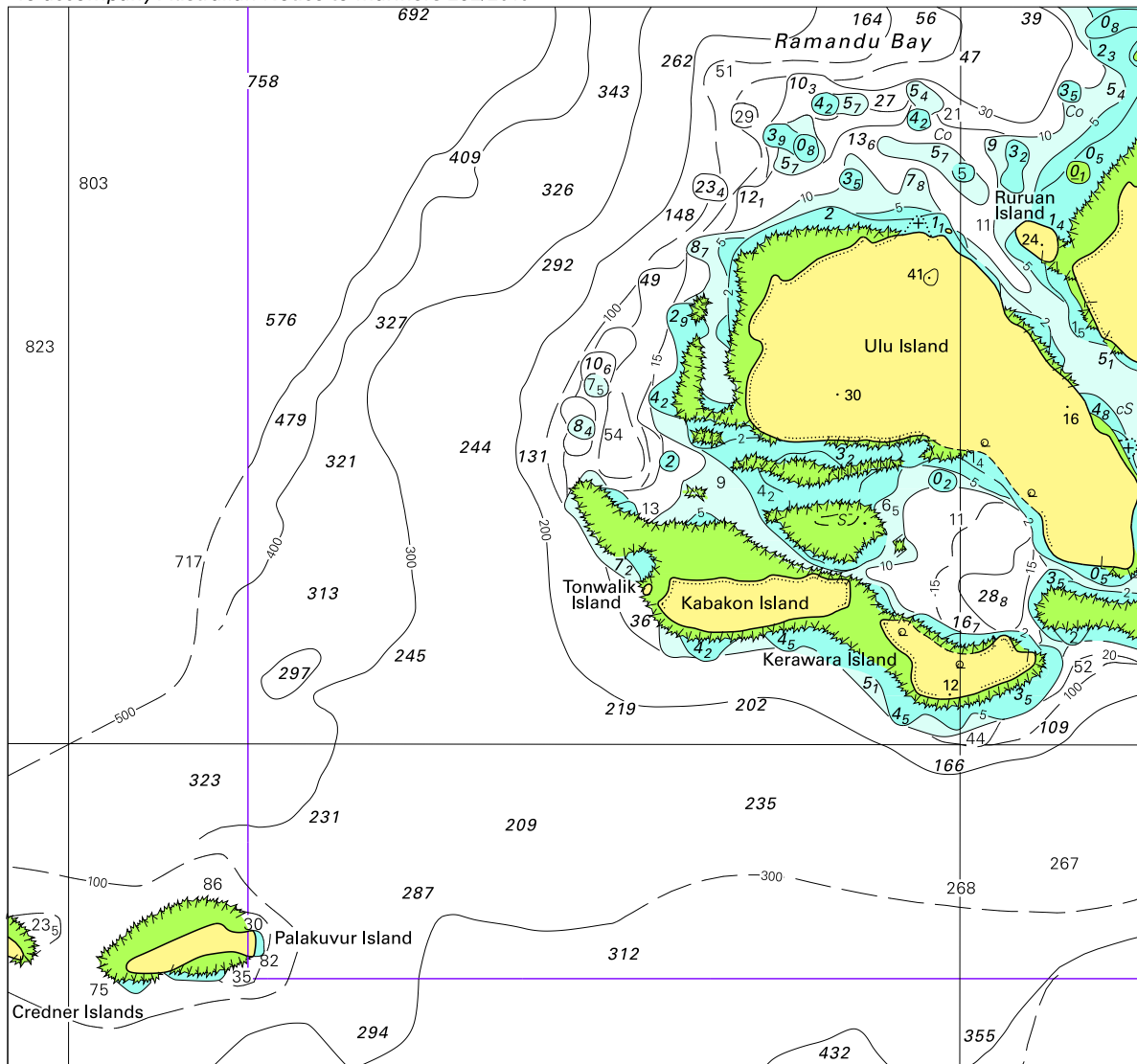


Block A for chart Aus 680

© Commonwealth of Australia 2010

(156-1 x 205-2mm)

To accompany Australian Notice to Mariners 252/2010

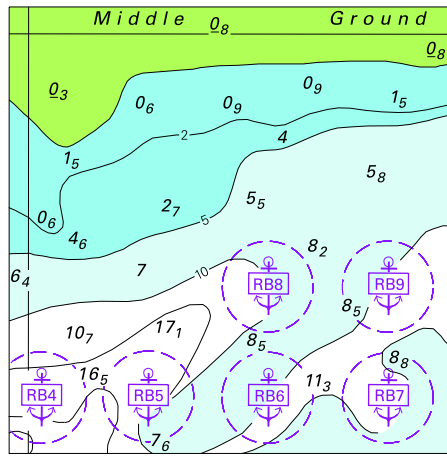


Block B for chart Aus 680

© Commonwealth of Australia 2010

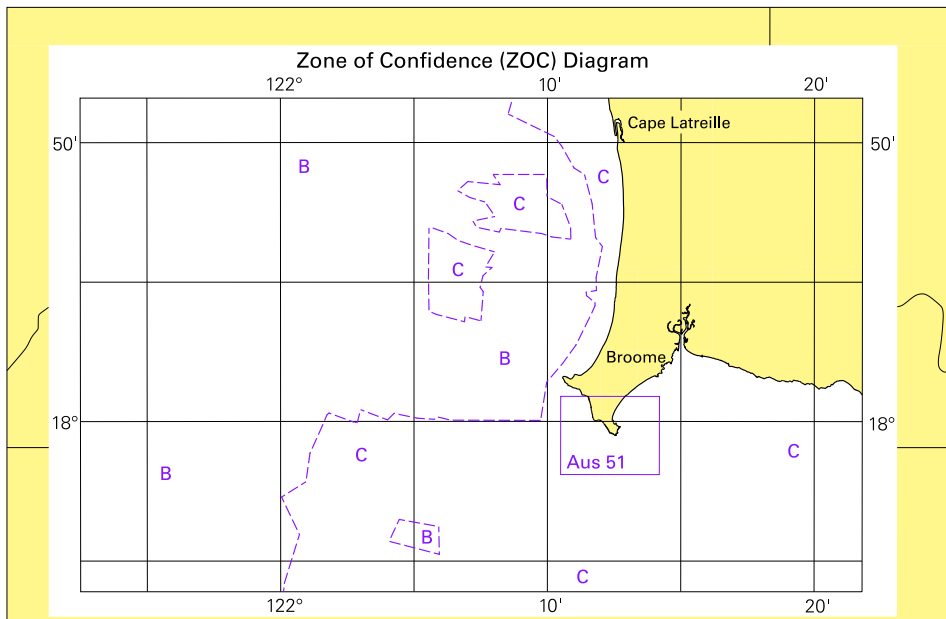
(156.1 x 146.2mm)

To accompany Australian Notice to Mariners 256/2010



© Commonwealth of Australia 2010
Block for chart Aus 50 (58.8 x 59mm)

To accompany Australian Notice to Mariners 256/2010



Block for chart Aus 50

© Commonwealth of Australia 2010

(125.4 x 81mm)