



26 February 2010

Edition 4

Australian Notices to Mariners are the authority for correcting Australian Charts and Publications

AUSTRALIAN NOTICES TO MARINERS

Notices 189 – 238 

Published fortnightly by the Australian Hydrographic Service

Commodore R. NAIRN RAN
Hydrographer of Australia

SECTIONS.

- I. **Australian Notices to Mariners, including blocks and notes.**
- II. **Hydrographic Reports.**
- III. **Navigational Warnings.**

SUPPLEMENTS.

- I. **Tracings**
- II. **Cumulative List of Australian Notices to Mariners.**
- III. **Temporary and Preliminary Notices in force.**
- IV. **Amendments to Admiralty List of Lights and Fog Signals (Vol K),
Radio Signals (NP 281(2), 282, 283(2), 285, 286(4)) and Sailing
Directions (NP 9, 13, 14, 15, 33, 34, 35, 36, 39, 44, 51, 60, 61, 62, 100, 136).**

© Commonwealth of Australia 2010

This work is copyright. Apart from any use permitted under the Copyright Act 1968, no part may be reproduced by any process, adapted, communicated or commercially exploited without prior written permission from The Commonwealth represented by the Australian Hydrographic Service.

IMPORTANT NOTICE

This edition of Notices to Mariners includes all significant information affecting AHS products which the AHS has become aware of since the last edition. All reasonable efforts have been made to ensure the accuracy and completeness of the information, including third party information, on which these updates are based. The AHS regards third parties from which it receives information as reliable, however the AHS cannot verify all such information and errors may therefore exist. The AHS does not accept liability for errors in third party information.

GENERAL INSTRUCTIONS

The substance of these notices should be inserted on the charts affected.

Bearings are referred to the true compass and are reckoned clockwise from North; those relating to lights are given as seen by an observer from seaward. Positions quoted in permanent notices relate to the horizontal datum for the chart(s). When preliminary or temporary notices affect multiple charts, positions will be provided in relation to only one horizontal datum and that datum will be specified. When the multiple charts do not have a common horizontal datum, mariners will be required to adjust the position(s) for those charts not on the specified datum. The range quoted for a light is its nominal range. Depths are with reference to the chart datum of each chart. Heights are above mean high water springs or mean higher high water, as appropriate.

The capital letter (P) or (T) after the number of any notice denotes a preliminary or temporary notice respectively, which are contained separately at the end of the permanent notices. A star (*) adjacent to the number of a notice indicates that the notice is based on original information.

REPORTING OF DANGERS

Mariners are particularly requested to notify the AUSTRALIAN HYDROGRAPHIC SERVICE, Locked Bag 8801 Wollongong, NSW 2500 (Fax 02-4223 6599, e-mail Hydro.NTM@defence.gov.au or, alternatively by filling in and submitting the [Hydrographic Notes](#) forms located on the web site – www.hydro.gov.au), immediately on the discovery of new dangers or suspected dangers to navigation. For changes or defects in aids to navigation notify AusSAR (Fax 02-6230 6868 or email rccaus@amsa.gov.au).

AUTHORISED USE

Copies of Australian notices are available free of charge from the Australian Hydrographic Service (AHS) website (www.hydro.gov.au) and through the eNotices (email) service (www.hydro.gov.au/enotices/enotices.htm).

Individual Notices may be copied for the purpose of inserting Notice substance on official charts and publications. Paper copies may be printed by chart agents and distributed to customers on a cost recovery basis. Participating chart agents are listed on the AHS website as providing a 'Paper Notices to Mariners' service (www.hydro.gov.au/prodserv/distributors/distributors.htm). Copies of the notices may not be sold for profit without prior written agreement.

NUMERICAL INDEX OF NOTICES TO MARINERS

Edition No 4

Notices	Aus Chart, INT Chart, ENC Cell, AHP
189.....	Aus 626, 670, 301, 326, NP 83
190.....	Amendment to Australian Notice to Mariners No 2
191.....	Amendment to Australian National Tide Tables
192.....	Aus 194, 195
193.....	Aus 197, 198, 808, AX 0808E, 63200
194.....	Aus 201
195.....	Aus 812
196.....	Aus 244, 245
197.....	Aus 247, 265
198.....	Aus 250
199.....	Aus 258
200.....	Aus 263, 264
201.....	Aus 376, 377, 378, 840, AX 60377
202.....	Aus 523
203.....	Aus 396, 676
204.....	Aus 6, 303
205.....	Aus 721
206.....	Aus 323
207.....	Aus 58, 59
208.....	Aus 4603, INT 603, AX 4603F
209.....	Aus 331, 332, 416, 748, 749
210.....	Aus 334, 754, AX 0334E, 0754E, 66002
211.....	Aus 119, 762
212.....	Aus 171, 173, 796
213.....	Aus 163
214.....	Aus 150
215.....	Aus 144, 158
216.....	Aus 158
217.....	Aus 154
218(T).....	Aus 238, AU5237X8
219(T).....	Aus 241
220(T).....	Aus 244, 245, 246, AU424151, 5244X5
221(T).....	Aus 260, 367, 822, AX 0260E, 0367E, 0822E, 60260, AU423150
222(T).....	Aus 249, 250, 823, AX 0249E, 0823E, AU422149, 5250P1
223(T).....	Aus 826, AU320147
224(T).....	Aus 826, AU320147
225(T).....	Aus 257, AU5XX257
226(T).....	Aus 256, 827, AU419146, 420146
227(T).....	Aus 270, AU5270P1
228(T).....	Aus 6
229(T).....	Aus 323, 324
230(T).....	Aus 57, 58, 59, 741, 742, AU421116, 5XXX58
231(T).....	Aus 415, 4708, INT 708, AX 0415F, 4708F, AU130090
232(T).....	Aus 334, 754, AX 0334E, 0754E, 66002, AU432115
233(T).....	Aus 754, AX 0754E, 66002, AU432115
234(T).....	Aus 119
235(T).....	Aus 136, 778
236(T).....	Aus 130, AU435138
237(T).....	Aus 130, 137
238(P).....	Aus 164, AU5164P1

189 AUSTRALIA - Product

Australian Hydrographic Service (AA447679), British Admiralty (AA455557)

New Chart

<i>Chart</i>	<i>Published</i>	<i>Title and description of amendments</i>	<i>Scale</i>	<i>Index Chart</i>	<i>Price</i>
Aus 626	15/1/2010	Papua New Guinea - South Coast - Approaches to Daru 9° 00' 80 S - 9° 11' 16 S 143° 10' 00 E - 143° 23' 36 E <i>New chart providing improved coverage of Daru.</i>	1:37 500	Aus 5000	\$35.00
Aus 670	15/1/2010	Papua New Guinea - New Britain - South Coast - Gasmata to Fulleborn including Linden Harbour 6° 06' 00 S - 6° 23' 72 S 150° 12' 72 E - 150° 43' 00 E <i>New chart providing improved coverage of south coast of New Britain, Gasmata to Fulleborn.</i>	1:50 000	Aus 5000	\$35.00

New Edition

<i>Chart</i>	<i>Published</i>	<i>Title and description of amendments</i>	<i>Scale</i>	<i>Index Chart</i>	<i>Price</i>
Aus 326	15/1/2010	Australia - North West Coast - Western Australia - Bedout Islet to Port Walcott 17° 31' 07" S - 20° 44' 11" S 117° 09' 05" E - 119° 07' 50" E Plan: Mermaid Reef 17° 03' 24" S - 17° 04' 45" S 119° 37' 52" E - 119° 39' 07" E <i>New edition referred to WGS84 datum and updated for maritime boundaries.</i>	1:300 000 1:12 500	Aus 5000	\$35.00

New Edition to be published shortly

<i>Chart</i>	<i>Title</i>	<i>Scale</i>	<i>Expected Publication Date</i>	<i>Expected Stock Availability</i>
Aus 301	Australia - North Coast - Queensland - Booby Island to Archer River	1:300 000	26 February 2010	4 April 2010

Admiralty publication

<i>NP No</i>	<i>Title</i>	<i>Date</i>	<i>Remarks</i>
NP 83	Admiralty List of Lights and Fog Signals Volume K 2010/11.	18/2/2010	Volume K 2009/10 is thereby cancelled.

For further details refer to the AHS website at www.hydro.gov.au for new edition and new chart stock arrival information.

When placing orders with a chart agent, mariners should advise whether their order pertains to the current edition or the new edition.

190 AUSTRALIA - Product - Amendment to Australian Notice to Mariners No 2

Australian Hydrographic Service (AA454482)

Page 8

Amend street address for Ballina Marineland Boat Sales to read 22 Endeavour Close Ballina 2478

191 AUSTRALIA - Product - Amendment to Australian National Tide Tables
 Australian Hydrographic Service (AA453139, AA453148, AA454591)

ANTT 2010

Page xxxi

Amend Broome To Chart Datum to AUS 50 NC 15 JAN 2010 0.0

Page xxxv

Insert Melbourne To Chart Datum AUS 155 NC 29 JAN 2010 0.0

Page 322

Amend Daru To Chart Datum to 0.0

Page 330

Amend Thilenius Harbour To Chart Datum to 0.0

192* AUSTRALIA - NEW SOUTH WALES - Port Kembla - Lights established

Port Kembla Port Corporation Notice 1/2010 (AA449989, AA453152)

Aus 194 [99/2010]

<i>Insert</i>	light, <i>F.Bu</i>	34° 27'.063 S	150° 53'.700 E
	light, <i>F.Bu</i>	34° 26'.924 S	150° 53'.694 E
	dashed line, between	34° 26'.924 S	150° 53'.694 E
		34° 27'.221 S	150° 53'.706 E
	continuous line with legend 358°, between	34° 27'.221 S	150° 53'.706 E
	special spar light buoy, Q(2)6s, without topmark	34° 27'.692 S	150° 53'.726 E
<i>Substitute</i>	continuous line for dashed line, between	34° 27'.70 S	150° 53'.74 E
		34° 27'.69 S	150° 53'.73 E

Aus 195 [99/2010]

<i>Insert</i>	light, <i>F.Bu</i>	34° 27'.063 S	150° 53'.700 E
	light, <i>F.Bu</i>	34° 26'.924 S	150° 53'.694 E
	dashed line, between	34° 26'.924 S	150° 53'.694 E
		34° 27'.221 S	150° 53'.706 E
	continuous line with legend 358°, between	34° 27'.221 S	150° 53'.706 E
		34° 27'.692 S	150° 53'.726 E

193* AUSTRALIA - NEW SOUTH WALES - Cape Baily to Ben Buckler - Light buoys; scientific instruments

Former Notices - 746(T)/2008, 208(T)/2009 are cancelled

Oceanographic Field Services Pty Ltd (AA454530), Sydney Ports Corporation (AA454251 - AA454255), Sydney Water (AA454468)

Aus 197 [1306/2009]

Insert	special spherical light buoy, <i>Fl(5)Y.20s</i> , without topmark	34° 02'.47 S	151° 15'.20 E
	depth, 20m, enclosed by danger circle with legend		
	<i>ODAS</i>	33° 56'.56 S	151° 22'.95 E
	depth, 20m, enclosed by danger circle with legend		
	<i>ODAS</i>	33° 59'.62 S	151° 26'.99 E
Substitute	special spherical light buoy, <i>Fl.Y.5s</i> , without topmark for light buoy	33° 53'.7 S	151° 19'.0 E
Delete	light buoy	34° 02'.6 S	151° 15'.2 E

Aus198 [1410/2009]

Insert	special spherical light buoy, <i>Fl(5)Y.20s</i> , without topmark	34° 02'.472 S	151° 15'.202 E
Delete	light buoy	34° 02'.62 S	151° 15'.20 E

Aus 808 [691/2009]

Insert	depth, 20m, enclosed by danger circle with legend		
	<i>ODAS</i>	33° 56'.56 S	151° 22'.95 E
	special spherical light buoy, <i>Fl.Y.5s</i> , without topmark	34° 07'.20 S	151° 13'.46 E

AX 0808E [691/2009]

Insert	depth, 20m, enclosed by danger circle with legend		
	<i>ODAS</i>	33° 56'.56 S	151° 22'.95 E
	special spherical light buoy, <i>Fl.Y.5s</i> , without topmark	34° 07'.20 S	151° 13'.46 E

AX 63200 [530/2009]

Substitute	special spherical light buoy, <i>Fl.Y.5s</i> , without topmark for light buoy	33° 53'.70 S	151° 18'.97 E
------------	---	--------------	---------------

194* AUSTRALIA - NEW SOUTH WALES - Port Jackson - Shark Island - Naval waters

Department of Defence (DHDB 1440966)

Aus 201 [146/2010]

Insert	accompanying block	33° 51'.3 S	151° 15'.5 E
--------	--------------------	-------------	--------------

195* AUSTRALIA - NEW SOUTH WALES - Arrawarra - Light

Australian Hydrographic Service (AA454161)

Aus 812 [101/2010]

Amend	light to <i>Ldg.2Fl.Bu.3s 3M</i>	30° 03'.6 S	153° 12'.0 E
-------	----------------------------------	-------------	--------------

196* AUSTRALIA - QUEENSLAND - Gladstone - Infrastructure

Maritime Safety Queensland Notice 117/2010 (AA452307, AA453466)

Aus 244 (plan, Fishermans Landing Wharves) [1261/2009]

Insert	accompanying block	23° 47'.3 S	151° 11'.0 E
--------	--------------------	-------------	--------------

Aus 245 [150/2010]

Insert	accompanying block	23° 47'.3 S	151° 11'.0 E
--------	--------------------	-------------	--------------

197* AUSTRALIA - QUEENSLAND - Keppel Bay - North West Bank - Depth
Maritime Safety Queensland (AA454115)

Aus 247 [1263/2009]

Insert	contour, between	23° 27'.30 S 23° 27'.55 S	150° 57'.95 E 150° 57'.85 E
Delete	depth, 9 _m contour, between	23° 27'.5 S 23° 27'.3 S 23° 27'.5 S 23° 27'.6 S	150° 58'.0 E 150° 57'.9 E 150° 58'.0 E 150° 57'.8 E

Aus 265 [1093/2009]

Delete	depth, 9 _m , and enclosing contour	23° 27'.45 S	150° 57'.98 E
--------	---	--------------	---------------

198* AUSTRALIA - QUEENSLAND - Hay Point - Restricted area limit
Australian Hydrographic Service (AA454338)

Aus 250 (plan, Hay Point) [288/2009]

Insert	restricted area limit with magenta legend, <i>Hay Point Security/Port/Pilotage Limit</i> , between	21° 17'.913 S 21° 17'.910 S	149° 17'.564 E 149° 20'.817 E
Delete	restricted area limit with legend <i>Hay Point Security/Port/Pilotage Limit</i> , between	21° 18'.00 S 21° 18'.00 S	149° 17'.66 E 149° 20'.81 E

199* AUSTRALIA - QUEENSLAND - Mourilyan - Light buoys
Maritime Safety Queensland (DHDB 1322630)

Aus 258 (plan, Mourilyan Harbour) [484/2008]

Insert	special cylindrical light buoy, <i>Fl.Y.2.5s</i> , with topmark	17° 36'.085 S	146° 07'.561 E
Move	light buoy to light buoy to light buoy to	17° 36'.11 S 17° 36'.112 S 17° 36'.16 S 17° 36'.161 S 17° 36'.14 S 17° 36'.175 S	146° 07'.32 E 146° 07'.299 E 146° 07'.43 E 146° 07'.384 E 146° 07'.51 E 146° 07'.485 E
Delete	depth, 4m	17° 36'.12 S	146° 07'.30 E

200* AUSTRALIA - QUEENSLAND - Cairns - Infrastructure; naval waters
Department of Defence (AA447175, AA447176, AA447183), Far North Queensland Ports Corporation (AA452574 - AA452576)

Aus 263 [154/2010]

Insert	accompanying block	16° 56'.2 S	145° 46'.8 E
--------	--------------------	-------------	--------------

Aus 264 [699/2009]

Insert	accompanying block	16° 56'.2 S	145° 46'.8 E
--------	--------------------	-------------	--------------

201* PAPUA NEW GUINEA - Daru - Chart limits

Australian Hydrographic Service (AA447679)

Aus 376 [1417/2009]

Insert	magenta limits, with legend <i>Aus 626</i> in SE corner, between	9° 00'.80 S	143° 10'.00 E
		9° 11'.16 S	143° 10'.00 E
		9° 11'.16 S	143° 23'.36 E
		9° 00'.80 S	143° 23'.36 E
		9° 00'.80 S	143° 10'.00 E

Aus 377 [941/2009]

Insert	magenta limits, with legend <i>Aus 626</i> in SE corner, between	9° 11'.16 S	143° 16'.07 E
		9° 11'.16 S	143° 23'.36 E
		9° 00'.80 S	143° 23'.36 E
		9° 00'.80 S	143° 16'.07 E

Aus 378 [902/2008]

Insert	magenta limits, with legend <i>Aus 626</i> in SE corner, between	9° 00'.80 S	143° 10'.00 E
		9° 11'.16 S	143° 10'.00 E
		9° 11'.16 S	143° 23'.36 E
		9° 00'.80 S	143° 23'.36 E
		9° 00'.80 S	143° 10'.00 E

Aus 840 [820/2009]

Insert	magenta limits, with legend <i>Aus 626</i> in SE corner, between	9° 01'.15 S	143° 10'.00 E
		9° 11'.16 S	143° 10'.00 E
		9° 11'.16 S	143° 23'.36 E
		9° 01'.15 S	143° 23'.36 E

Substitute	accompanying ZOC diagram	9° 05'.0 S	142° 46'.0 E
------------	--------------------------	------------	--------------

AX 60377 [941/2009]

Insert	magenta limits, with legend <i>Aus 626</i> in SE corner, between	9° 11'.16 S	143° 16'.07 E
		9° 11'.16 S	143° 23'.36 E
		9° 00'.80 S	143° 23'.36 E
		9° 00'.80 S	143° 16'.07 E

202* PAPUA NEW GUINEA - Lae - Wreck*Former Notices - 121(T)/2008, 355(T)/2008 are cancelled*

National Maritime Safety Authority PNG Notice 139/2007 (AA307967, AA454153)

Aus 523 [1155/2009]

Insert	depth, 17 ₁ m, enclosed by danger circle with legend, <i>Wk</i>	6° 48'.35 S	146° 58'.17 E
--------	---	-------------	---------------

Delete	depth, 23 ₅ m	6° 48'.6 S	146° 58'.0 E
--------	--------------------------	------------	--------------

203* PAPUA NEW GUINEA - Gasmata to Fulleborn Harbour - Plans withdrawn; depths

Australian Hydrographic Service (AA447679)

Aus 396 [1306/2009]

Insert accompanying block 6° 20'.0 S 150° 30'.0 E

Substitute accompanying ZOC diagram 5° 50'.0 S 150° 18'.0 E

Aus 676 (plan, Gasmata) [537/2009]

Delete plan GASMATA, centred on 6° 17'.5 S 150° 19'.5 E

Aus 676 (plan, Fulleborn Harbour)

Delete plan FULLEBORN HARBOUR, centred on 6° 08'.5 S 150° 39'.0 E

Aus 676 (plan, Linden Harbour)

Delete plan LINDEN HARBOUR, centred on 6° 17'.0 S 150° 28'.5 E

204* AUSTRALIA - QUEENSLAND - Karumba - Lights

Maritime Safety Queensland (AA453405)

Aus 6 [482/2009]Amend light beacon to *Q.7M & Fl(2)6s 4M (F Day (occas))* 17° 26'.82 S 140° 45'.52 Elight beacon to *Iso.2s 8M & Fl(2)8s 4M (F Day (occas))* 17° 27'.17 S 140° 46'.18 E**Aus 303 [1051/2009]**Amend light beacon to *Iso.2s (F Day)* 17° 27'.2 S 140° 46'.2 Elight beacon to *Q (F Day)* 17° 26'.8 S 140° 45'.5 E**205* AUSTRALIA - NORTHERN TERRITORY - Port Essington to Snake Bay - Chart note**

Australian Hydrographic Service (AA346902, AA454549)

Aus 721 [704/2009]

Insert accompanying note 11° 34'.0 S 131° 15'.0 E

206* AUSTRALIA - WESTERN AUSTRALIA - Adele Island to Lacepede Islands - ZOC diagram

UKHO (AA453277)

Aus 323 [33/2010]

Substitute accompanying ZOC diagram 17° 07'.0 S 123° 00'.0 E

207* AUSTRALIA - WESTERN AUSTRALIA - Dampier - Light

Dampier Port Authority Notice 4/2009 (AA395577)

Aus 58 [159/2010]Amend light to *FAI.WRG.48m 3M & F.Bu.30m 6M* 20° 37'.06 S 116° 45'.11 E**Aus 59 (plan, Withnell Bay to King Bay) [159/2010]**Amend light to *FAI.WRG.48m 3M* 20° 37'.14 S 116° 45'.03 E

208* AUSTRALIA - WESTERN AUSTRALIA - Rankin Bank - Production platform

UKHO (AA453532)

Aus 4603 (INT 603) [32/2010]

Insert production platform 20° 00'.0 S 115° 22'.0 E

AX 4603F [32/2010]

Insert production platform 20° 00'.0 S 115° 22'.0 E

209* AUSTRALIA - WESTERN AUSTRALIA - Zuytdorp Point - Nomenclature

Landgate (AA450699)

Aus 331 [62/2009]Amend name to *Pepper Point* 26° 24'.0 S 113° 16'.0 E**Aus 332 [1312/2009]**

Insert accompanying block 26° 32'.0 S 114° 35'.0 E

Amend name to *Pepper Point* 26° 24'.0 S 113° 15'.0 Ename to *Pepper Point* 26° 32'.5 S 114° 08'.5 E**Aus 416 [113/2010]**Amend name to *Pepper Point* 26° 24'.0 S 113° 15'.0 E**Aus 748 [1164/2009]**Amend name to *Pepper Point* 26° 24'.0 S 113° 19'.0 E**Aus 749 [369/2009]**Amend name to *Pepper Point* 26° 24'.0 S 113° 19'.0 E**210* AUSTRALIA - WESTERN AUSTRALIA - Rottnest Island - Scientific instrument***Former Notice - 1157(P)/2008 is cancelled*

CSIRO (AA357790, AA357782, AA428158 - AA428164)

Aus 334 [1313/2009]Insert depth, 20m, enclosed by danger circle with legend,
ODAS 32° 00'.0 S 115° 25'.0 E

Delete depth, 35m 32° 00'.7 S 115° 25'.2 E

Aus 754 [1313/2009]Insert depth, 20m, enclosed by danger circle with legend,
ODAS 32° 00'.0 S 115° 25'.0 E**AX 0334E [1313/2009]**Insert depth, 20m, enclosed by danger circle with legend,
ODAS 32° 00'.0 S 115° 25'.0 E

Delete depth, 35m 32° 00'.7 S 115° 25'.2 E

AX 0754E [1313/2009]Insert depth, 20m, enclosed by danger circle with legend,
ODAS 32° 00'.0 S 115° 25'.0 E**AX 66002 [1313/2009]**Insert depth, 20m, enclosed by danger circle with legend,
ODAS 32° 00'.0 S 115° 25'.0 E

211* AUSTRALIA - WESTERN AUSTRALIA - Esperance - Charley Island - Scientific instrument

Former Notice - 1158(P)/2008 is cancelled
CSIRO (AA357790, AA357782, AA428158 - AA428164)

Aus 119 [116/2010]

Insert	depth, 20m, enclosed by danger circle with legend, ODAS	33° 56'.0 S	121° 51'.0 E
--------	--	-------------	--------------

Aus 762 [607/2009]

Insert	depth, 20m, enclosed by danger circle with legend, ODAS	33° 56'.0 S	121° 51'.0 E
--------	--	-------------	--------------

212* AUSTRALIA - TASMANIA - River Derwent - Flowerpot Point - Pipeline established

Former Notice - 684(T)/2009 is cancelled
Marine and Safety Tasmania (AA454241, AA454242)

Aus 171 [45/2010]

Insert	outfall pipeline, between	43° 00'.95 S	147° 19'.75 E
		43° 00'.95 S	147° 20'.17 E

Aus 173 [1060/2009]

Insert	outfall pipeline, between	43° 00'.95 S	147° 19'.75 E
		43° 00'.95 S	147° 20'.17 E

Aus 796 [492/2009]

Insert	outfall pipeline, between	43° 00'.95 S	147° 19'.75 E
		43° 00'.95 S	147° 20'.17 E

213* AUSTRALIA - TASMANIA - Burnie - Lights altered

Former Notice - 1403(T)/2009 is cancelled
Marine and Safety Tasmania Notice 171/2009 (AA441755, AA453424)

Aus 163 [1316/2009]

Amend	light to F.G.6M	41° 03'.08 S	145° 55'.28 E
	light to F.6M	41° 02'.91 S	145° 55'.01 E

Aus 163 (plan, Port of Burnie)

Amend	light to F.G.16m 6M	41° 03'.08 S	145° 55'.28 E
	light to F.16m.6M	41° 02'.91 S	145° 55'.01 E

214* AUSTRALIA - VICTORIA - Port Phillip - The Rip - Chart limits

Boat Books Australia (AA454454)

Aus 150 [1231/2009]

Insert	magenta limits, with legend Aus 144 in NE corner, between	38° 20'.30 S	144° 42'.83 E
		38° 20'.30 S	144° 44'.40 E
		38° 15'.88 S	144° 44'.40 E
		38° 15'.88 S	144° 42'.83 E

Delete	magenta limits, with legend Aus 144, centred on	38° 20'.0 S	144° 44'.3 E
--------	---	-------------	--------------

215* AUSTRALIA - VICTORIA - Port Phillip - Lonsdale Bay - Buoys altered

Victorian Notice 19/2010 (AA454291)

Aus 144 [NC 20/11/2009]

Insert	special conical light buoy, <i>Fl.Y.5s</i> , without topmark	38° 16'.916 S	144° 37'.762 E
	special conical light buoy, <i>Fl.Y.5s</i> , without topmark	38° 17'.135 S	144° 37'.871 E

Delete	buoy	38° 16'.92 S	144° 37'.78 E
--------	------	--------------	---------------

Aus 158 [1370/2009]

Insert	special conical light buoy, <i>Fl.Y.5s</i> , without topmark	38° 17'.135 S	144° 37'.871 E
--------	--	---------------	----------------

Substitute	special conical light buoy, <i>Fl.Y.5s</i> , without topmark for buoy	38° 16'.92 S	144° 37'.76 E
------------	---	--------------	---------------

216* AUSTRALIA - VICTORIA - Port Phillip - Balcombe Bay - Light buoys altered

Victorian Notice 12/2010 (AA451926)

Aus158 [215/2010]

Insert	special conical light buoy, <i>Q(4)Y.6s</i> , with topmark	38° 13'.919 S	145° 00'.488 E
	special conical light buoy, <i>Q(4)Y.6s</i> , with topmark	38° 14'.405 S	145° 00'.475 E

Substitute	special conical light buoy, <i>Q(4)Y.6s</i> , with topmark for light buoy	38° 13'.91 S	144° 59'.91 E
------------	---	--------------	---------------

	special conical light buoy, <i>Q(4)Y.6s</i> , with topmark for light buoy	38° 14'.40 S	144° 59'.90 E
--	---	--------------	---------------

	special conical light buoy, <i>Q(4)Y.6s</i> , with topmark for light buoy	38° 13'.93 S	145° 01'.06 E
--	---	--------------	---------------

	special conical light buoy, <i>Q(4)Y.6s</i> , with topmark for light buoy	38° 14'.42 S	145° 01'.05 E
--	---	--------------	---------------

217* AUSTRALIA - VICTORIA - Port Phillip - River Yarra - Webb Dock to Holden Dock - Maintained depths

Port of Melbourne Corporation (AA454010)

Aus154 [122/2010]

Insert	maintained depth, <i>13.1m</i>	37° 49'.440 S	144° 54'.092 E
--------	--------------------------------	---------------	----------------

	maintained depth, <i>10.0m</i>	37° 49'.539 S	144° 54'.026 E
--	--------------------------------	---------------	----------------

	maintained depth, <i>12.5m</i>	37° 50'.805 S	144° 54'.604 E
--	--------------------------------	---------------	----------------

218(T)/2010 AUSTRALIA - QUEENSLAND - Brisbane River - Humbug Reach - Norris Point - Harbour works completed*Former Notice - 1376(T)/2009 is cancelled*

Maritime Safety Queensland Notice 785(T)/2009 (AA441675)

Cancel this notice on receipt.

Chart formerly affected - Aus 238 - AU5237X8**219(T)/2010 AUSTRALIA - QUEENSLAND - Urangan - Scientific instrument recovered***Former Notice - 129(T)/2010 is cancelled*

Maritime Safety Queensland Notice 169/2010 (AA455956)

Cancel this notice on receipt.

Chart formerly affected - Aus 241**220(T)/2010 AUSTRALIA - QUEENSLAND - Gladstone - Depth information***Former Notice - 130(T)/2010 is cancelled*

Maritime Safety Queensland Notice 145(T)/2010 (AA455193)

Available depths as at 24 November 2009:

<i>Metres</i>	<i>Remarks</i>
Sea Channels:	
* Wild Cattle Cutting	16.1
Boyne Island Cutting	16.3
Boyne Island Extension Channel	9.0
* Golding Cutting	16.1
South Bypass Channel	7.4
* Gatcombe Channel	16.3
Gatcombe Bypass Channel	13.4
Inner Channels:	
Auckland Channel	15.8
Auckland Bypass Channel	6.8
Clinton Channel	16.0
Clinton Bypass Channel	10.6
Clinton Swing Basin	10.9
Targinie Channel	10.6
Targinie Swing Basin East	10.9
Targinie Swing Basin West	8.9
Berths:	
Boyne Smelter Wharf	15.0
South Trees East Wharf	13.8
South Trees West Wharf	13.0
Barney Point Wharf (east approach)	13.5
Barney Point Wharf (west approach)	11.5
Barney Point Wharf	15.0
Auckland Point No 1 Wharf	11.3
Auckland Point No 2 Wharf	11.3
Auckland Point No 3 Wharf	11.4
Auckland Point No 4 Wharf	11.3
Clinton No 1 Wharf	19.2
Clinton No 2 Wharf	18.4
Clinton No 3 Wharf	18.6
Clinton No 4 Wharf	19.1
Fishermans Landing Wharf No 1	13.6
Fishermans Landing Wharf No 2	13.3
Fishermans Landing Wharf No 4	11.4
Fishermans Landing Wharf No 5	11.4

* Indicates revised entry.

Chart temporarily affected - Aus 244 - Aus 245 - Aus 246 - AU424151 - AU5244X5

221(T)/2010 AUSTRALIA - QUEENSLAND - Shoalwater Bay - Live firing*Date* - Until 14 March 2010

Maritime Safety Queensland Notice 95(T)/2010 (AA452866)

Live firing activities will be conducted in the Shoalwater Bay training area during the period 7 March to 13 March 2010.

A marine danger area extends to all waters within a 3M radius of position 22° 23'.0 S 150° 30'.3 E.

All waters, creeks, beaches and other areas within the declared marine danger area are not available for access.

Chart temporarily affected - Aus 260 - Aus 367 - Aus 822 – AX 0260E – AX 0367E – AX 0822E – AX 60260 - AU423150

222(T)/2010 AUSTRALIA - QUEENSLAND - Freshwater Point to Slade Island - Scientific instruments*Date* - Until 31 October 2010

Maritime Safety Queensland Notices 171/2010, 172/2010 (AA455890, AA455891)

Special light buoys, Q. Y, exist in positions:

21° 24'.90 S 149° 20'.17 E

21° 19'.15 S 149° 19'.45 E

21° 10'.64 S 149° 15'.97 E

21° 05'.69 S 149° 14'.61 E.

Chart temporarily affected - Aus 249 - Aus 250 - Aus 823 – AX 0249E – AX 0823E - AU422149 - AU5250P1

223(T)/2010 AUSTRALIA - QUEENSLAND - Upstart Bay - Light buoy re-established*Former Notice* - 178(T)/2010 is cancelled

Maritime Safety Queensland Notice 164/2010 (AA455693)

Cancel this notice on receipt.

Chart formerly affected - Aus 826 - AU320147

224(T)/2010 AUSTRALIA - QUEENSLAND - Upstart Bay - Light buoy re-established*Former Notice* - 177(T)/2010 is cancelled

Maritime Safety Queensland Notice 165/2010 (AA455691)

Cancel this notice on receipt.

Chart formerly affected - Aus 826 - AU320147

225(T)/2010 AUSTRALIA - QUEENSLAND - Townsville - Ross River - Dredging operations completed*Former Notice* - 1453(T)/2009 is cancelled

Maritime Safety Queensland Notice 814(T)/2009 (AA443313)

Cancel this notice on receipt.

Chart formerly affected - Aus 257 - AU5XX257

226(T)/2010 AUSTRALIA - QUEENSLAND - Halifax Bay - Light buoys established*Date - Until 12 April 2010*

Maritime Safety Queensland Notice 131(T)/2010 (AA455251)

Special light buoys, Q, exist in the following positions:

19° 08'.77 S 146° 39'.69 E
 19° 09'.21 S 146° 38'.21 E
 19° 08'.37 S 146° 45'.25 E
 19° 07'.11 S 146° 35'.62 E
 18° 57'.89 S 146° 25'.43 E.

Chart temporarily affected - Aus 256 - Aus 827 - AU419146 - AU420146**227(T)/2010 AUSTRALIA - QUEENSLAND - Port Douglas - Dredging operations completed***Former Notice - 64(T)/2010 is cancelled*

Maritime Safety Queensland Notice 12(T)/2010 (AA448143)

Cancel this notice on receipt.

Chart formerly affected - Aus 270 - AU5270P1**228(T)/2010 AUSTRALIA - QUEENSLAND - Karumba - Depth information***Former Notice - 512(T)/2009 is cancelled*

Maritime Safety Queensland Notices 505(T)/2008, 138(T)/2010 (AA354877, AA455280)

Available depths as at 15 February 2010:

<i>Berth</i>	<i>Metres</i>
* Entrance Channel	3.2
Mobil/Trinity Wharf	6.3
Raptis Wharf	5.3
Ruby Marine Wharf	5.3
Gulf Freight Services Wharf	6.2
Karumba Cold Stores Wharf	6.2
Seaswift/Shell Wharf	6.2
Karumba Livestock Loading Wharf	5.4
Gulf Freight Services Ramp/Wharf	4.6
Pasminco Export Wharf	4.2

* Indicates revised entry.

Chart temporarily affected - Aus 6**229(T)/2010 AUSTRALIA - WESTERN AUSTRALIA - Lacepede Channel to Cape Boileau - Scientific instruments***Former Notice - 674(T)/2009 is cancelled*

MetOcean Engineers (AA407165)

Cancel this notice on receipt.

Chart formerly affected - Aus 323 - Aus 324

230(T)/2010 AUSTRALIA - WESTERN AUSTRALIA - Dampier - Back fill operations

Date - Until 30 April 2010

Dampier Port Authority Notice 7/2010 (AA455521)

The dredge *Nile River* and support vessel *First Class* are conducting back fill operations on the Pluto pipeline trench between the following positions (WGS84 datum):

20° 36'.30 S 116° 45'.48 E
 20° 35'.17 S 116° 44'.71 E
 20° 33'.08 S 116° 45'.64 E
 20° 32'.00 S 116° 45'.67 E
 20° 30'.34 S 116° 46'.33 E
 20° 26'.77 S 116° 46'.51 E
 20° 24'.48 S 116° 45'.89 E
 20° 19'.01 S 116° 39'.89 E
 20° 17'.19 S 116° 32'.15 E.

Survey operations are being conducted by vessel *Baudin*.

Vessels will monitor VHF Ch 11 and Ch 16.

Chart temporarily affected - Aus 57 - Aus 58 - Aus 59 - Aus 741 - Aus 742 - AU421116 - AU5XXX58

231(T)/2010 AUSTRALIA - WESTERN AUSTRALIA - Exmouth Plateau - Seismic survey

Date - Until 1 April 2010

RPS Australia and South East Asia (AA450399)

SSV *Western Geco* with a 6000m towed array, will be conducting a survey in the area bounded by the following positions:

19° 09'.93 S 113° 14'.29 E
 19° 09'.92 S 113° 45'.08 E
 19° 19'.92 S 113° 45'.08 E
 19° 19'.92 S 113° 20'.08 E
 19° 14'.94 S 113° 23'.19 E.

Chart temporarily affected - Aus 415 – AX 0415F – AX 4708F - Aus 4708 (INT 708) - AU130090

232(T)/2010 AUSTRALIA - WESTERN AUSTRALIA - Rottnest Island - Military exercise

Date - Until 7 March 2010

Department of Defence (AA453548)

A 1000m restricted zone exists around the following area from 3 March to 6 March 2010:

31° 54'.0 S 115° 22'.0 E
 31° 57'.0 S 115° 22'.0 E
 31° 57'.0 S 115° 23'.8 E
 31° 54'.0 S 115° 23'.8 E.

MV *Seahorse* is in the vicinity and will promulgate regular warnings on VHF Ch 16.

Chart temporarily affected - Aus 334 - Aus 754 – AX 0334E – AX 0754E – AX 66002 - AU432115

233(T)/2010 AUSTRALIA - WESTERN AUSTRALIA - Rottnest Island - Scientific instruments

Former Notice - 141(T)/2010 is cancelled

Date - Until 19 March 2010

Curtin University (AA455698)

Subsurface scientific instruments exist in positions 31° 51'.0 S 115° 17'.9 E and 31° 48'.4 S 115° 17'.2 E.

Chart temporarily affected - Aus 754 – AX 0754E – AX 66002 - AU432115

234(T)/2010 AUSTRALIA - WESTERN AUSTRALIA - Esperance - Scientific instrument

Former Notice - 779(T)/2006 is cancelled
Department of Transport WA (AA454769)

Cancel this notice on receipt.

Chart formerly affected - Aus 119**235(T)/2010 AUSTRALIA - SOUTH AUSTRALIA - Port Bonython - Light buoy re-established**

Former Notice - 1251(T)/2009 is cancelled
Department for Transport, Energy and Infrastructure SA (AA455688)

Cancel this notice on receipt.

Chart formerly affected - Aus 136 - Aus 778**236(T)/2010 AUSTRALIA - SOUTH AUSTRALIA - Barker Inlet - Shoaling**

Department for Transport, Energy and Infrastructure SA Notice 8/2010 (AA455661)

Shoaling, marked by a starboard lateral buoy, exists in position 34° 45'.12 S 138° 30'.99 E (WGS84 datum).

Mariners are advised to navigate with caution in the area.

Chart temporarily affected - Aus 130 - AU435138**237(T)/2010 AUSTRALIA - SOUTH AUSTRALIA - Port Adelaide - Wreck salvaged**

Former Notice - 393(T)/2009 is cancelled
HydroSurvey Australia (AA455672)

Cancel this notice on receipt.

Chart formerly affected - Aus 130 - Aus 137**238(P)/2010 AUSTRALIA - TASMANIA - Devonport - Mersey River - Shoaling**

Marine and Safety Tasmania Notice M23/2010 (AA454296, AA454297, AA455555)

Shoaling, with a least depth of 9.1m, exists within 150m radius of 41° 09' S 159° 12' E.

Aus 164 and ENC will be updated in due course.

Chart which will be affected - Aus 164 - AU5164P1

II

HYDROGRAPHIC REPORTS

Nil Reports

NAVIGATION WARNINGS

The following radio messages have been received during the period to 26 February 2010. Signal copies of these messages may be destroyed. It is recommended that the reprint of Navigational Warnings should be kept in a file or a book divided into areas. Cancellation should be made on receipt of signals and reprints.

Rigs on location other than those listed in the latest Section III summary are the subject of Radio Navigational Warnings. Rigs in transit will not be the subject of Warnings.

AUSCOAST WARNING

- 035 Special purpose vessel *Geo Celtic* conducting seismic survey towing 3.5M cable in area bounded by 18° 48'·0 S to 20° 47'·0 S and 114° 43'·0 E to 115° 50'·0 E. 5M clearance requested.
- 036 Special purpose vessel *Beaufort Explorer* conducting seismic survey in area bounded by 9° 00'·0 S to 11° 30'·0 S and 128° 00'·0 E to 135° 20'·0 E. 2M clearance requested.
- 037 Cancelled.
- 038 Cancelled.
- 039 Cancelled.
- 040 Cancelled.
- 041 Drill rig *Transocean Legend* in position 13° 41'·53 S 122° 11'·29 E. 2.5M clearance requested.
- 042 Drill rig *Jack Bates* in position 20° 04'·24 S 113° 46'·46 E. 2.5M clearance requested.
- 043 Cancelled.
- 044 Special purpose vessel *Aquila Explorer* conducting seismic survey towing 3M cable in area bounded by 38° 27'·0 S to 39° 49'·0 S and 146° 44'·0 E to 148° 58'·0 E. 5M clearance requested.
- 045 Cancelled.
- 046 Cancelled.
- 047 Special purpose vessel *Geo Atlantic* conducting seismic survey in area bounded by 12° 05'·0 S to 12° 51'·0 S and 123° 28'·0 E to 124° 54'·0 E. 6M clearance requested.
- 048 Cancelled.

NAVAREA X WARNINGS

- 005 Mariners are advised that ECDIS may not display some isolated shoal depths when operating in "base or standard display" mode. Route planning and monitoring alarms for these shoal depths may not always be activated. To ensure safe navigation and to confirm that a planned route is clear of such dangers mariners should visually inspect the planned route and any deviations from it using ECDIS configured to display "all data". The automated voyage planning check function should not be solely relied upon. The International Hydrographic Organization (IHO) is leading technical action to resolve this matter. Further information will be made available through Notices to Mariners.

Navigational warnings in force as at 260001UTC FEB 10.**Auscoast**

2009 297 304 306 310

2010 007 008 016 024 027 029 030 034 035 036 041 042 044 047

Navarea X

005

Summary of mobile drilling rigs as at 260001UTC FEB 10.

<i>Name</i>	<i>Position</i>
Ocean Patriot	38° 09'·71 S 148° 12'·97 E
Ocean Shield	11° 05'·90 S 127° 03'·70 E
Transocean Legend	13° 41'·53 S 122° 11'·29 E
Ensco 7500	19° 57'·20 S 114° 52'·70 E
Stena Clyde	20° 05'·30 S 115° 09'·70 E
Atwood Eagle	20° 35'·10 S 114° 36'·60 E
Jack Bates	20° 04'·24 S 113° 46'·46 E
Nan Hai 6	21° 26'·23 S 114° 02'·48 E
Ocean Epoch	21° 32'·30 S 114° 05'·60 E

NAVAREA XIV WARNINGS

006 South Pacific Ocean. Fiji, Vanua Levu and Viti Levu. Lights unlit.

The following lights are unlit:

Cape Washington	K4662	19° 06'·6 S 177° 57'·8 E
Beqa Is. Nawamati Point	K4694	18° 24'·2 S 178° 09'·9 E
Navula Point	K4706	17° 53'·2 S 177° 14'·9 E
Yadua Is. Summit	K4714.6	16° 49'·1 S 178° 18'·1 E
Vatu-I-Ra Channel	K4716	17° 16'·0 S 178° 33'·0 E
Vatu-I-Ra Channel. West	K4717	17° 16'·6 S 178° 29'·2 E
Taveuni Is. Off Vuna Point	K4750	16° 57'·9 S 179° 52'·5 E
Nukutolu Islets. West End	K4751	17° 17'·0 S 179° 38'·5 W

007 Use of ECDIS. Mariners are advised that ECDIS may not display some isolated shoal depths when operating in "base or standard display" mode. Route planning and monitoring alarms for these shoal depths may not always be activated. To ensure safe navigation and to confirm that a planned route is clear of such dangers mariners should visually inspect the planned route and any deviations from it using ECDIS configured to display "all data". The automated voyage planning check function should not be solely relied upon. The International Hydrographic Organization (IHO) is leading technical action to resolve this matter. Further information will be made available through Notices to Mariners.

Navarea XIV warnings in force as at 260001UTC FEB 10.

2009 059

2010 003 006 007

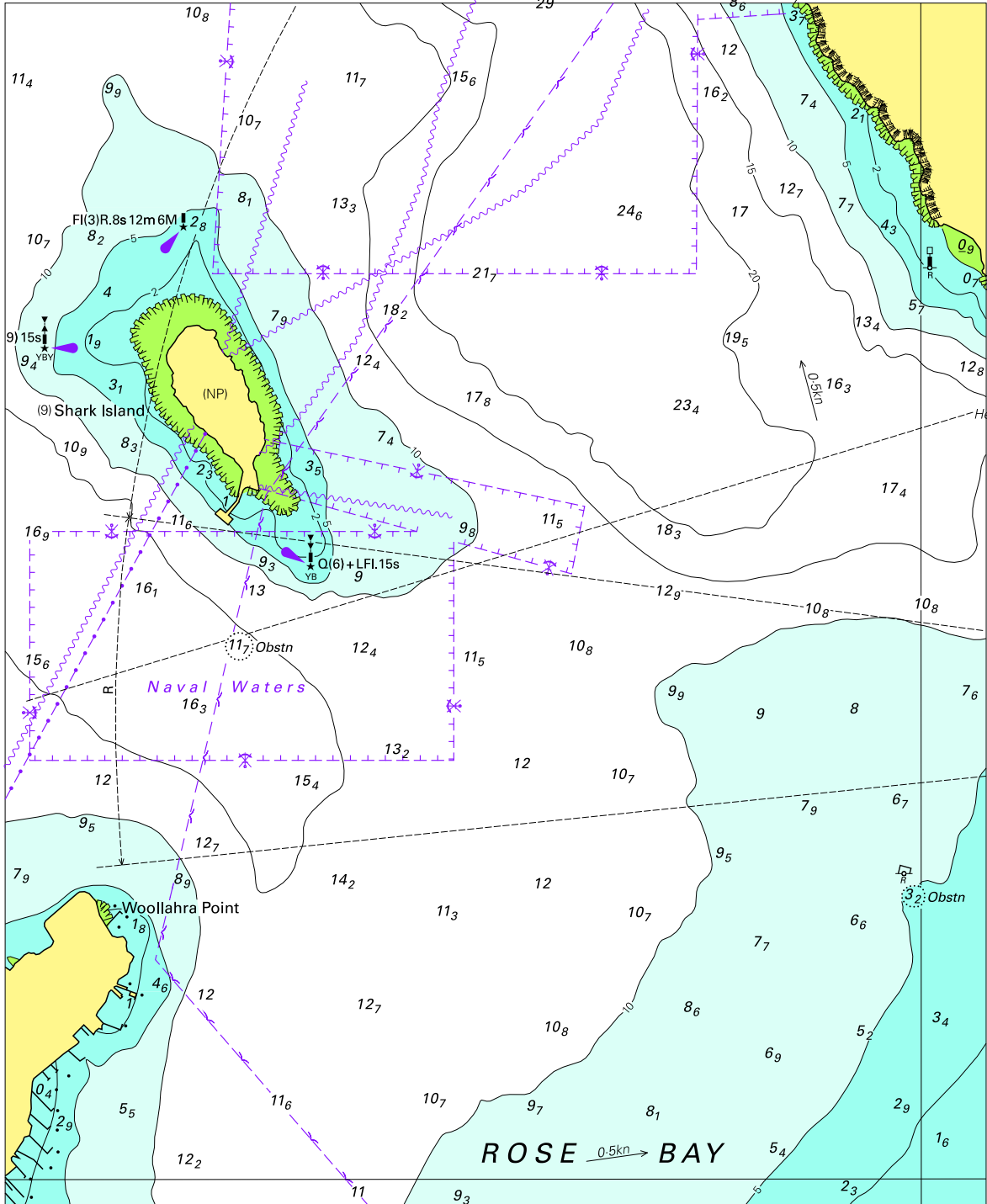
To accompany Australian Notice to Mariners 205/2010

OMISSIONS FROM CHART

Certain information has been omitted from this chart. For details see the larger scale nautical charts and relevant nautical publications.

Note for chart Aus 721.

To accompany Australian Notice to Mariners 194/2010

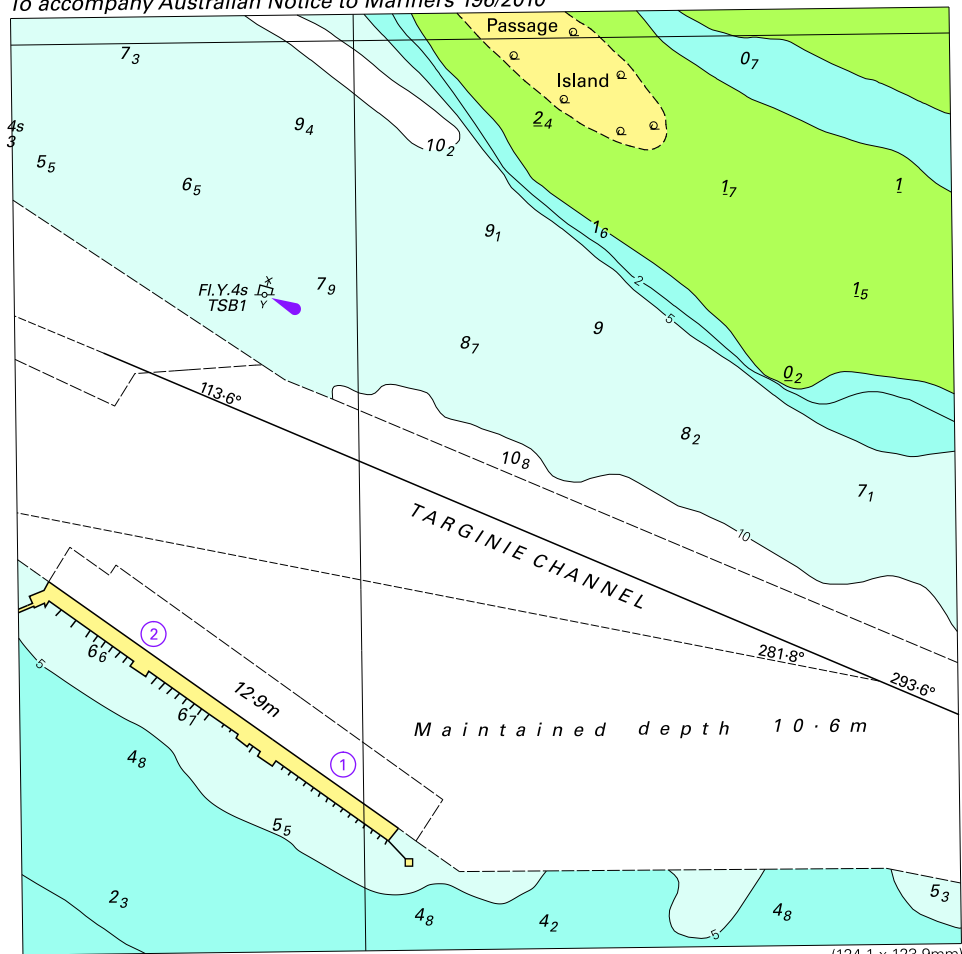


Block for chart Aus201

© Commonwealth of Australia 2010

(188.9 x 154.2mm)

To accompany Australian Notice to Mariners 196/2010

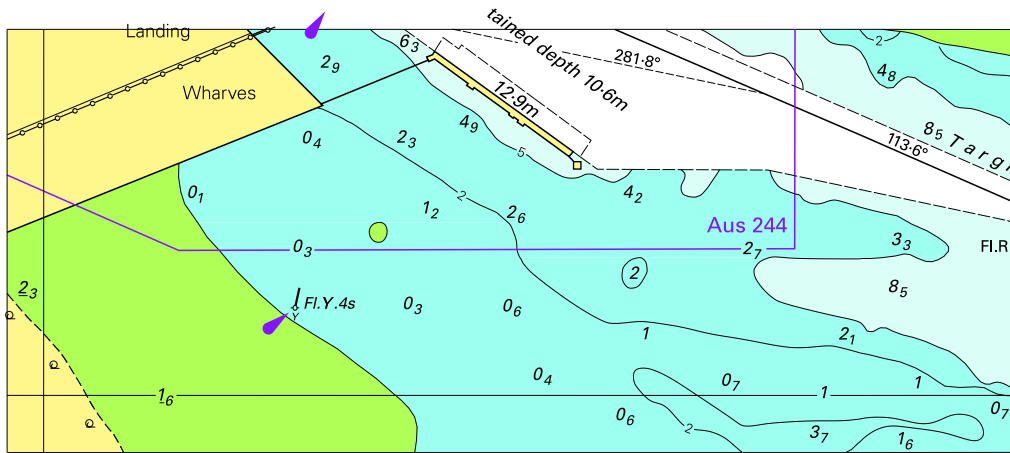


Block for chart Aus244

© Commonwealth of Australia 2010

(124.1 x 123.9mm)

To accompany Australian Notice to Mariners 196/2010

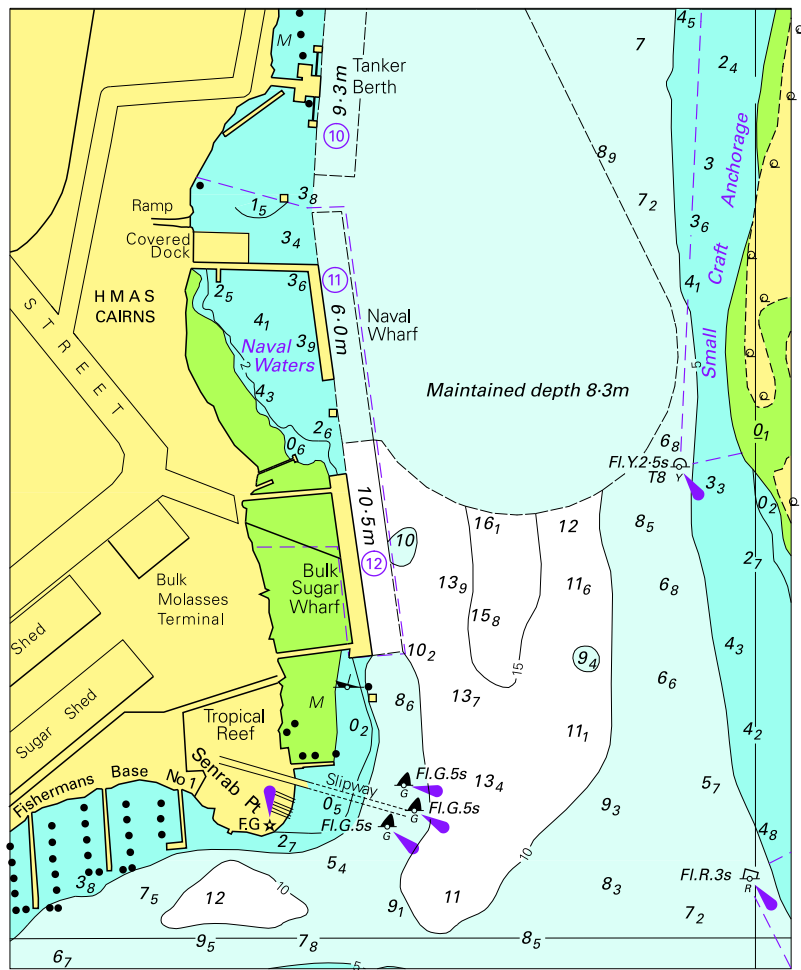


Block for chart Aus 245

© Commonwealth of Australia 2010

(55.9 x 132.8mm)

To accompany Australian Notice to Mariners 200/2010

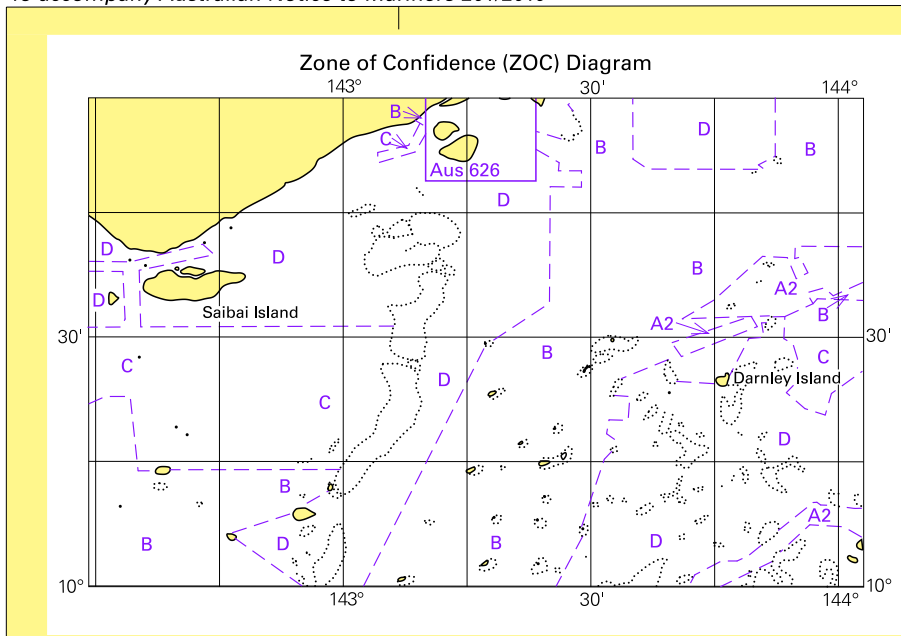


© Commonwealth of Australia 2010

Block for chart Aus 264

(103.3 x 127.0mm)

To accompany Australian Notice to Mariners 201/2010



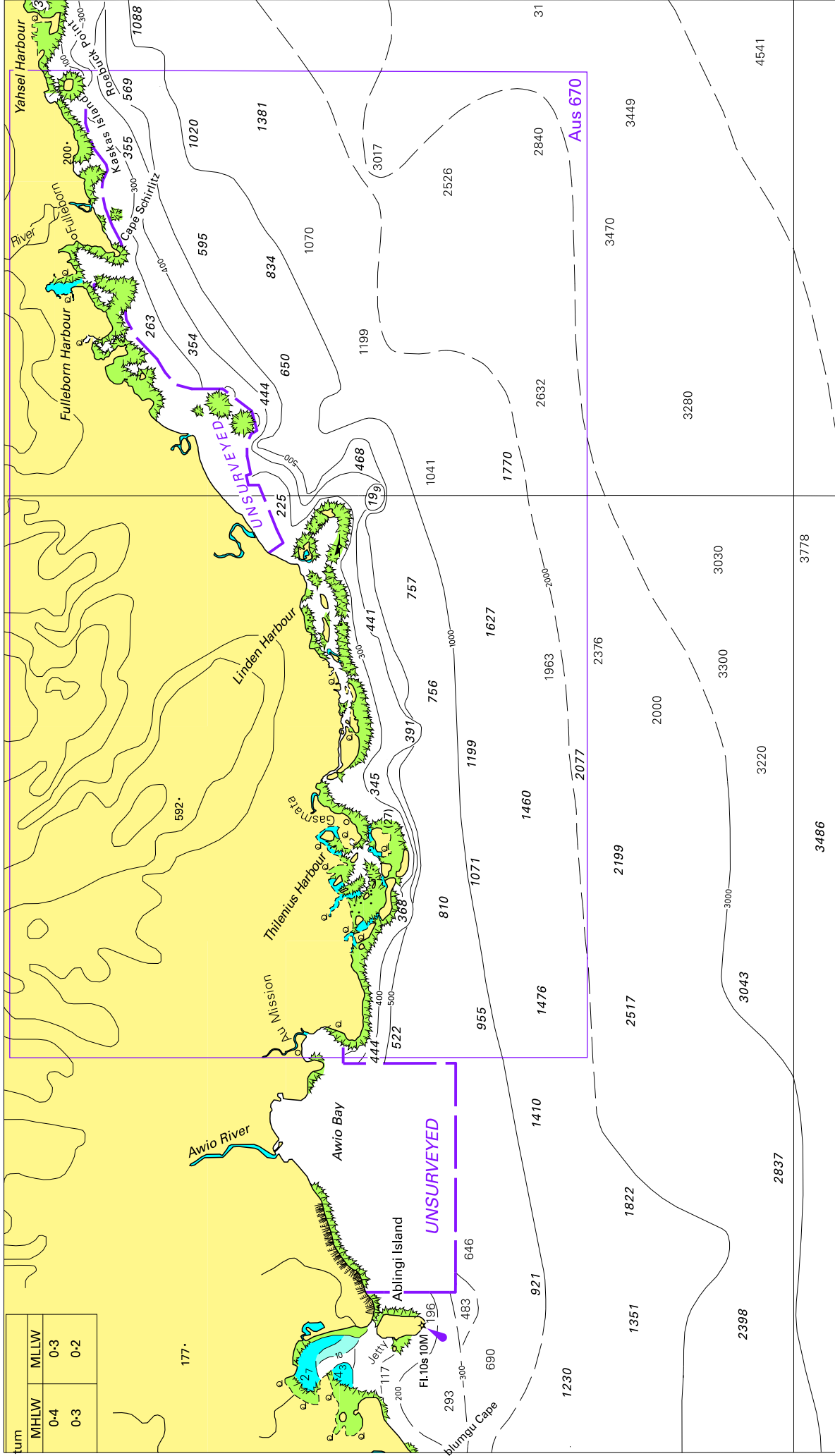
Block for chart Aus 840

© Commonwealth of Australia 2010

(119.4 x 83.3mm)

To accompany Australian Notice to Mariners 203/2010

tum	MHLW	MLLW
	0-4	0-3
	0-3	0-2

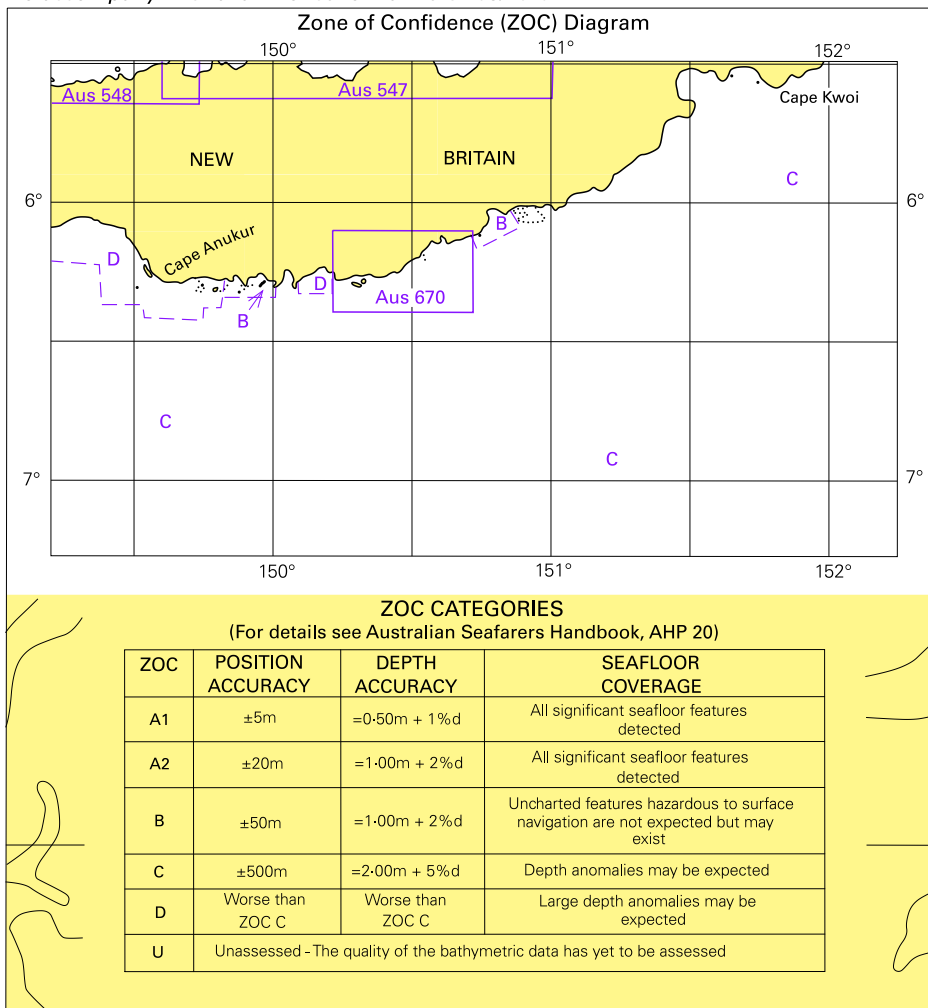


Block for chart Aus 396

© Commonwealth of Australia 2010

(272.4 x 156.0mm)

To accompany Australian Notice to Mariners 203/2010

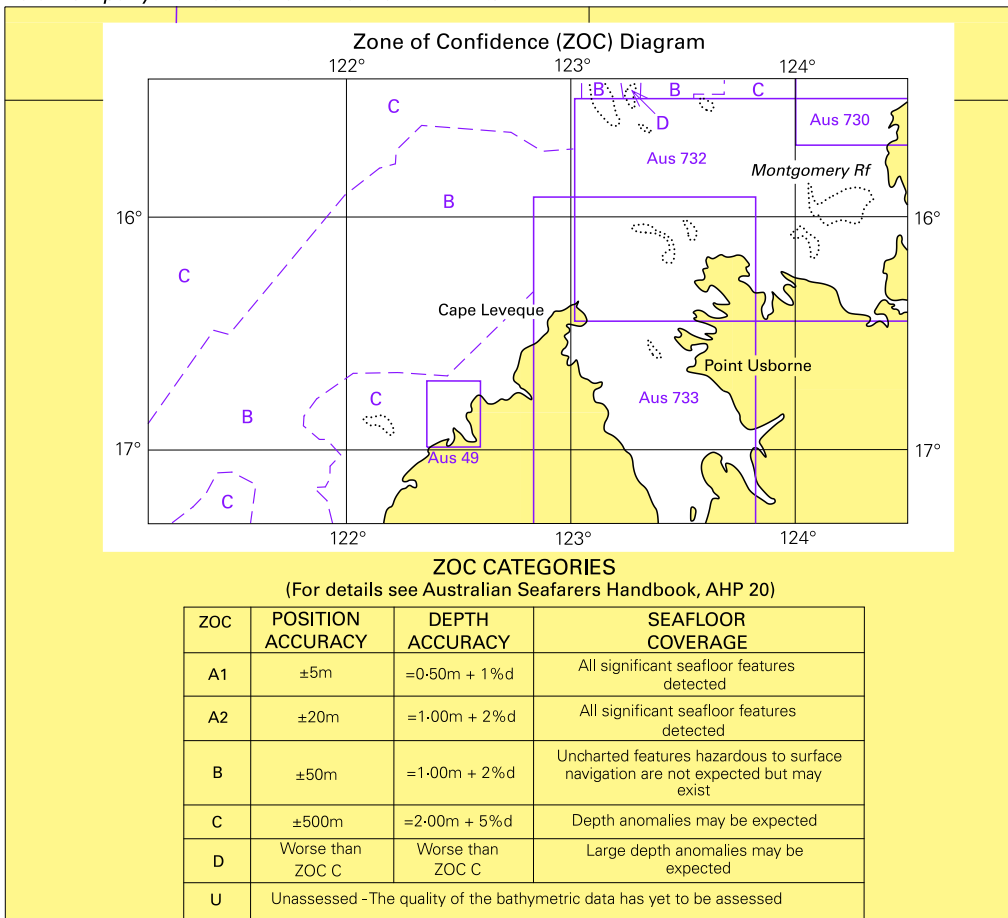


Block for chart Aus 396

© Commonwealth of Australia 2010

(123-3 x 132-8mm)

To accompany Australian Notice to Mariners 206/2010

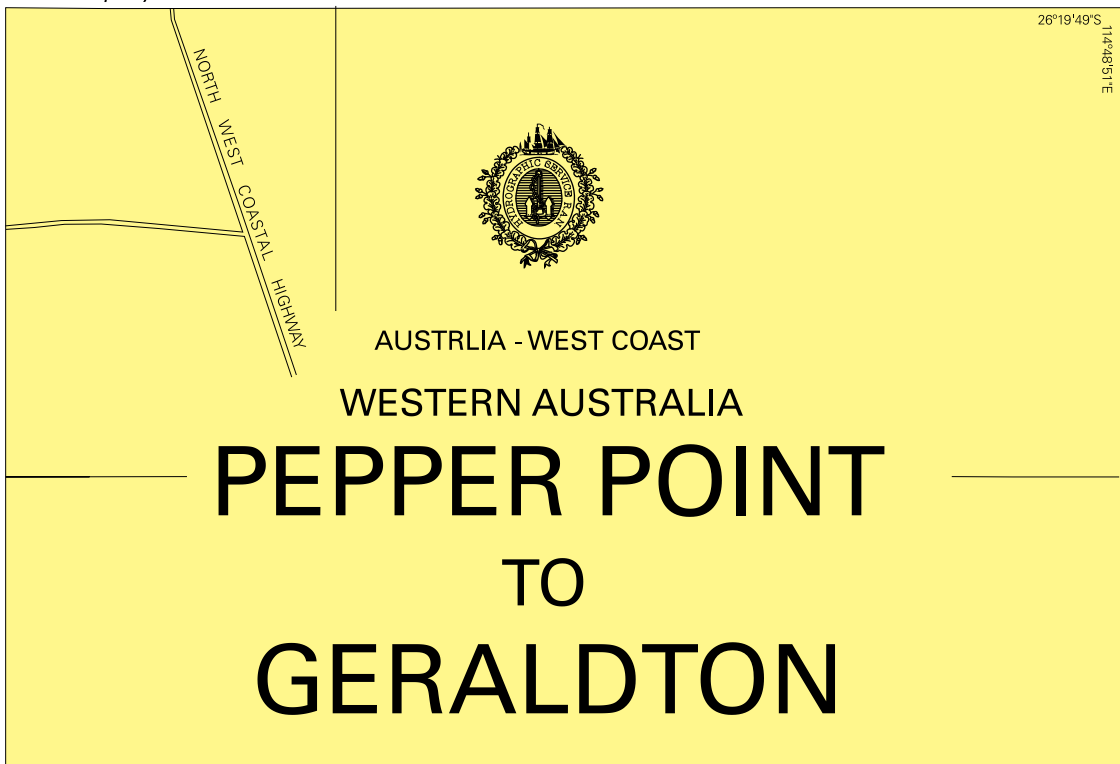


Block for chart Aus 323

© Commonwealth of Australia 2010

(133 x 120.6mm)

To accompany Australian Notice to Mariners 209/2010



Block for chart Aus 332

© Commonwealth of Australia 2010

(148-0 x 100-8mm)