



12 February 2010

Edition 3

Australian Notices to Mariners are the authority for correcting Australian Charts and Publications

AUSTRALIAN NOTICES TO MARINERS

Notices 144 – 188 

Published fortnightly by the Australian Hydrographic Service

Commodore R. NAIRN RAN
Hydrographer of Australia

SECTIONS.

- I. **Australian Notices to Mariners, including blocks and notes.**
- II. **Hydrographic Reports.**
- III. **Navigational Warnings.**

SUPPLEMENTS.

- I. **Tracings**
- II. **Cumulative List of Australian Notices to Mariners.**
- III. **Temporary and Preliminary Notices in force.**
- IV. **Amendments to Admiralty List of Lights and Fog Signals (Vol K),
Radio Signals (NP 281(2), 282, 283(2), 285, 286(4)) and Sailing
Directions (NP 9, 13, 14, 15, 33, 34, 35, 36, 39, 44, 51, 60, 61, 62, 100, 136).**

© Commonwealth of Australia 2010

This work is copyright. Apart from any use permitted under the Copyright Act 1968, no part may be reproduced by any process, adapted, communicated or commercially exploited without prior written permission from The Commonwealth represented by the Australian Hydrographic Service.

IMPORTANT NOTICE

This edition of Notices to Mariners includes all significant information affecting AHS products which the AHS has become aware of since the last edition. All reasonable efforts have been made to ensure the accuracy and completeness of the information, including third party information, on which these updates are based. The AHS regards third parties from which it receives information as reliable, however the AHS cannot verify all such information and errors may therefore exist. The AHS does not accept liability for errors in third party information.

GENERAL INSTRUCTIONS

The substance of these notices should be inserted on the charts affected.

Bearings are referred to the true compass and are reckoned clockwise from North; those relating to lights are given as seen by an observer from seaward. Positions quoted in permanent notices relate to the horizontal datum for the chart(s). When preliminary or temporary notices affect multiple charts, positions will be provided in relation to only one horizontal datum and that datum will be specified. When the multiple charts do not have a common horizontal datum, mariners will be required to adjust the position(s) for those charts not on the specified datum. The range quoted for a light is its nominal range. Depths are with reference to the chart datum of each chart. Heights are above mean high water springs or mean higher high water, as appropriate.

The capital letter (P) or (T) after the number of any notice denotes a preliminary or temporary notice respectively, which are contained separately at the end of the permanent notices. A star (*) adjacent to the number of a notice indicates that the notice is based on original information.

REPORTING OF DANGERS

Mariners are particularly requested to notify the AUSTRALIAN HYDROGRAPHIC SERVICE, Locked Bag 8801 Wollongong, NSW 2500 (Fax 02-4223 6599, e-mail Hydro.NTM@defence.gov.au or, alternatively by filling in and submitting the [Hydrographic Notes](#) forms located on the web site – www.hydro.gov.au), immediately on the discovery of new dangers or suspected dangers to navigation. For changes or defects in aids to navigation notify AusSAR (Fax 02-6230 6868 or email rccaus@amsa.gov.au).

AUTHORISED USE

Copies of Australian notices are available free of charge from the Australian Hydrographic Service (AHS) website (www.hydro.gov.au) and through the eNotices (email) service (www.hydro.gov.au/enotices/enotices.htm).

Individual Notices may be copied for the purpose of inserting Notice substance on official charts and publications. Paper copies may be printed by chart agents and distributed to customers on a cost recovery basis. Participating chart agents are listed on the AHS website as providing a 'Paper Notices to Mariners' service (www.hydro.gov.au/prodserv/distributors/distributors.htm). Copies of the notices may not be sold for profit without prior written agreement.

NUMERICAL INDEX OF NOTICES TO MARINERS

Edition No 3

Notices	Aus Chart, INT Chart, ENC Cell, AHP
144.....	Aus 320, 330, 739, 740, 741, 746, 5000, 5001, AX 6031G, 6031S, AU315140, 330154, 413135, 5220P1, 5220P2, 5220P4, 5220P5, 5220P6, 5220P7, AHP 20
145.....	Aus 201
146.....	Aus 200, 201, 202,
147.....	Aus 220
148.....	Aus 241
149.....	Aus 365
150.....	Aus 245
151.....	Aus 426, 4602, 4621, INT 602, 621, AX 4621F
152.....	Aus 253
153.....	Aus 253
154.....	Aus 263
155.....	Aus 830
156.....	Aus 22
157.....	Aus 322, AX 0322F
158.....	Aus 325, 327
159.....	Aus 58, 59
160.....	Aus 328
161.....	Aus 327, 741, 742
162.....	Aus 111, 117, AX 70117
163.....	Aus 117, AX 70117
164.....	Aus 349
165.....	Aus 157
166.....	Aus 153, 157
167(T).....	Aus 200, 202, AU5X200E
168(T).....	Aus 236, 814, AU428153
169(T).....	Aus 236
170(T).....	Aus 246, 819, AU424151
171(T).....	Aus 246, AU424151
172(T).....	Aus 244, 245, AU5244X5
173(T).....	Aus 247, 265, AU424150
174(T).....	Aus 366, 367, 819, 820, AX 0367E, 0820E, AU424150
175(T).....	Aus 249, 823, AX 0249E, 0823E, AU422149
176(T).....	Aus 249, 250, 823, 824, AX 0249E, 0823E, AU422149, 5250P2
177(T).....	Aus 826, AU320147
178(T).....	Aus 826, AU320147
179(T).....	Aus 319, AX 0319F, AU314123
180(T).....	Aus 323, 324, AU418122
181(T).....	Aus 57, 58, 741, AU5XXX58
182(T).....	Aus 328, 329, 743, 744, AU422114
183(T).....	Aus 177, 792
184(T).....	Aus 171, 173, 174
185(T).....	Aus 172, AU5XX172
186(T).....	Aus 168, AU5167X8
187(P).....	Aus 150, 151, 152, AU439145, 5152P3
188(T).....	Aus 357A, 487, 800, 802, AU439146, 439147, 439148, 440147, 440148

NUMERICAL INDEX OF CHARTS AFFECTED

Edition No 3

Aus Chart	Notices	Aus Chart	Notices
Aus 22.....	156	Aus 814	168(T)
Aus 57.....	181(T)	Aus 819	170(T), 174(T)
Aus 58.....	159, 181(T)	Aus 820	174(T)
Aus 59.....	159	Aus 823	175(T), 176(T)
Aus 111.....	162	Aus 824	176(T)
Aus 117.....	162, 163	Aus 826	177(T), 178(T)
Aus 150.....	187(P)	Aus 830	155
Aus 151.....	187(P)	Aus 4602	151
Aus 152.....	187(P)	Aus 4621	151
Aus 153.....	166	Aus 5000	144
Aus 157.....	165, 166	Aus 5001	144
Aus 168.....	186(T)	AX 0249E	175(T), 176(T)
Aus 171.....	184(T)	AX 0319F.....	179(T)
Aus 172.....	185(T)	AX 0322F.....	157
Aus 173.....	184(T)	AX 0367E	174(T)
Aus 174.....	184(T)	AX 0820E	174(T)
Aus 177.....	183(T)	AX 0823E	175(T), 176(T)
Aus 200.....	146, 167(T)	AX 4621F.....	151
Aus 201.....	145, 146	AX 6031G.....	144
Aus 202.....	146, 167(T)	AX 6031S.....	144
Aus 220.....	147	AX 70117.....	162, 163
Aus 236.....	168(T), 169(T)		
Aus 241.....	148		
Aus 244.....	172(T)	INT Chart	Notices
Aus 245.....	150, 172(T)	INT 602.....	151
Aus 246.....	170(T), 171(T)	INT 621.....	151
Aus 247.....	173(T)		
Aus 249.....	175(T), 176(T)		
Aus 250.....	176(T)	ENC Cell	Notices
Aus 253.....	152, 153	AU314123.....	179(T)
Aus 263.....	154	AU315140.....	144
Aus 265.....	173(T)	AU320147.....	177(T), 178(T)
Aus 319.....	179(T)	AU330154.....	144
Aus 320.....	144	AU413135.....	144
Aus 322.....	157	AU418122.....	180(T)
Aus 323.....	180(T)	AU422114.....	182(T)
Aus 324.....	180(T)	AU422149.....	175(T), 176(T)
Aus 325.....	158	AU424150.....	173(T), 174(T)
Aus 327.....	158, 161	AU424151.....	170(T), 171(T)
Aus 328.....	160, 182(T)	AU428153.....	168(T)
Aus 329.....	182(T)	AU439145.....	187(P)
Aus 330.....	144	AU439146.....	188(T)
Aus 349.....	164	AU439147.....	188(T)
Aus 357A.....	188(T)	AU439148.....	188(T)
Aus 365.....	149	AU440147.....	188(T)
Aus 366.....	174(T)	AU440148.....	188(T)
Aus 367.....	174(T)	AU5XXX58	181(T)
Aus 426.....	151	AU5152P3.....	187(P)
Aus 487.....	188(T)	AU5167X8	186(T)
Aus 739.....	144	AU5XX172.....	185(T)
Aus 740.....	144	AU5X200E.....	167(T)
Aus 741.....	144, 161, 181(T)	AU5220P1	144
Aus 742.....	161	AU5220P2.....	144
Aus 743.....	182(T)	AU5220P4.....	144
Aus 744.....	182(T)	AU5220P5.....	144
Aus 746.....	144	AU5220P6.....	144
Aus 792.....	183(T)	AU5220P7.....	144
Aus 800.....	188(T)	AU5244X5.....	172(T)
Aus 802.....	188(T)	AU5250P2.....	176(T)

144 AUSTRALIA - Product

Australian Hydrographic Service (AA447679, AA453408, AA453482, AA453870)

New Chart

<i>Chart</i>	<i>Published</i>	<i>Title and description of amendments</i>	<i>Scale</i>	<i>Index Chart</i>	<i>Price</i>
Aus 739	15/1/2010	Australia - North West Coast - Western Australia - Bedout Islet to Port Hedland 18° 53'.00 S - 20° 22'.00 S 118° 16'.40 E - 119° 15'.80 E <i>New chart with amended limits; referred to WGS84 and updated for maritime boundaries. Vertical datum remains ISLW.</i>	1:150 000	Aus 5000	\$35.00
Aus 740	15/1/2010	Australia - North West Coast - Western Australia - Port Hedland to Port Walcott 19° 51'.00 S - 20° 47'.00 S 116° 59'.80 E - 118° 41'.40 E Plan: Depuch Island Anchorage 20° 35'.10 S - 20° 37'.87 S 117° 42'.20 E - 117° 45'.49 E <i>New chart with amended limits; referred to WGS84 and updated for maritime boundaries. Vertical datum remains ISLW.</i>	1:150 000 1:20 000	Aus 5000	\$35.00
Aus 741	15/1/2010	Australia - North West Coast - Western Australia - Approaches to Dampier Archipelago 19° 12'.00 S - 20° 48'.00 S 116° 18'.60 E - 117° 18'.00 E <i>New chart with amended limits; referred to WGS84 and updated for maritime boundaries. Vertical datum remains ISLW.</i>	1:150 000	Aus 5000	\$35.00

New Edition

<i>Chart</i>	<i>Published</i>	<i>Title and description of amendments</i>	<i>Scale</i>	<i>Index Chart</i>	<i>Price</i>
Aus 320	20/11/2009	Australia - North West Coast - Western Australia - Browse Island to Adele Island including Bonaparte Archipelago 13° 46' 24" S - 15° 41' 56" S 122° 44' 00" E - 125° 51' 53" E <i>New edition referred to WGS84 and updated for maritime boundaries.</i>	1:300 000	Aus 5000	\$35.00
Aus 5000	12/2/2010	Australian Index of Nautical Charts - Northern Portion			\$17.50
Aus 5001	12/2/2010	Australian Index of Nautical Charts - Southern Portion			\$17.50

New Miscellaneous Chart

<i>Chart</i>	<i>Published</i>	<i>Title</i>	<i>Scale</i>	<i>Remarks</i>
AX 6031G	12/2/2010	Eastern Australia Exercise Area - GOP - Submarine and Surface Combination	1:900 000	Fleet use only.
AX 6031S	12/2/2010	Eastern Australia Exercise Area - Scenario - Submarine and Surface Combination	1:900 000	Fleet use only.

New Electronic Navigation Chart (Seafarer ENC)

<i>Cell Name</i>	<i>Released</i>	<i>Title</i>
AU315140	February 2010	Gulf of Carpentaria - Cell 4
AU330154	February 2010	Coral Sea - Cell 2
AU413135	February 2010	Northern Territory - Buckingham Bay and Castlereagh Bay
AU5220P1	February 2010	New South Wales - Tweed River Entrance
AU5220P2	February 2010	New South Wales - Richmond River Entrance
AU5220P4	February 2010	New South Wales - Wooli Wooli River Entrance
AU5220P5	February 2010	New South Wales - Brunswick River Entrance
AU5220P6	February 2010	New South Wales - Trial Bay
AU5220P7	February 2010	New South Wales - Evans Head

Seafarers Handbook

<i>No</i>	<i>Title</i>	<i>Recommended Retail Price (incl GST)</i>	<i>Remarks</i>
AHP 20	Australian Seafarers Handbook (Second Edition 2009)	\$59.95	Edition 1 of AHP 20 is cancelled.

Chart permanently withdrawn

<i>Chart</i>	<i>On publication of new chart/edition</i>
Aus 739	Aus 739
Aus 740	Aus 740
Aus 741	Aus 741
Aus 5000	Aus 5000
Aus 5001	Aus 5001

Chart to be permanently withdrawn without replacement

<i>Chart</i>	<i>On publication of new chart</i>
Aus 330	Aus 746

For further details refer to the AHS website at www.hydro.gov.au for new edition and new chart stock arrival information.

When placing orders with a chart agent, mariners should advise whether their order pertains to the current edition or the new edition.

145* AUSTRALIA - NEW SOUTH WALES - Port Jackson - Manly Point - Contour

Australian Hydrographic Service (AA447168)

Aus 201 [1211/2009]

Insert	contour, between	33° 48'.524 S	151° 17'.034 E
		33° 48'.523 S	151° 17'.057 E
		33° 48'.506 S	151° 17'.059 E

146* AUSTRALIA - NEW SOUTH WALES - Port Jackson - Naval waters revoked
Department of Defence (AA447175, AA447176, AA447183)

Aus 200 [29/2010]

Insert	magenta dashed line, between	33° 52'.04 S	151° 13'.23 E
		33° 51'.69 S	151° 13'.43 E
		33° 51'.56 S	151° 13'.64 E
		33° 51'.56 S	151° 14'.94 E
		33° 51'.91 S	151° 14'.94 E
		33° 52'.08 S	151° 14'.76 E
		33° 52'.02 S	151° 13'.74 E
		33° 52'.08 S	151° 13'.74 E
		33° 52'.21 S	151° 13'.58 E
Delete	legend, HMAS Platypus naval waters limit, centred on	33° 50'.7 S	151° 12'.9 E
		33° 51'.8 S	151° 14'.2 E

Aus 201 [145/2010]

Insert	magenta dashed line, with legend <i>Naval Waters</i> , between	33° 51'.464 S	151° 14'.633 E
		33° 51'.464 S	151° 15'.004 E
		33° 51'.810 S	151° 15'.004 E
		33° 51'.984 S	151° 14'.829 E
		33° 51'.970 S	151° 14'.633 E
Delete	naval waters limit, with legends, centred on	33° 51'.7 S	151° 14'.8 E

146* AUSTRALIA - NEW SOUTH WALES - Port Jackson - Naval waters revoked (continued)

Aus 202 [806/2009]

Insert	magenta dashed line, with legend <i>Naval Waters</i> , between	33° 51'.936 S	151° 13'.304 E		
		33° 51'.598 S	151° 13'.502 E		
		33° 51'.464 S	151° 13'.707 E		
		33° 51'.464 S	151° 15'.004 E		
		33° 51'.810 S	151° 15'.004 E		
		33° 51'.984 S	151° 14'.829 E		
		33° 51'.924 S	151° 13'.807 E		
		33° 51'.989 S	151° 13'.807 E		
		33° 52'.122 S	151° 13'.647 E		
		Delete	naval waters limit, with legend, centred on naval waters limit, with legend, centred on naval waters limit, with legends, centred on naval waters limit, with legend, centred on	33° 51'.00 S	151° 14'.60 E
				33° 50'.56 S	151° 13'.06 E
33° 51'.80 S	151° 14'.30 E				
33° 51'.88 S	151° 11'.71 E				

147* AUSTRALIA - NEW SOUTH WALES - Tweed River - Drying height

Australian Hydrographic Service (AA452355)

Aus 220 (plan, Tweed River Entrance) [857/2009]

Delete	drying height, 2 ₁ m, and enclosing contour	28° 10'.97 S	153° 32'.91 E
--------	--	--------------	---------------

148* AUSTRALIA - QUEENSLAND - Great Sandy Strait - North Head - Mooring buoy established

Maritime Safety Queensland Notice 81/2010 (AA452386)

Aus 241 [1413/2009]

Insert	lit cylindrical mooring buoy, <i>Fl. Y. 4s</i>	25° 25'.741 S	152° 55'.644 E
--------	--	---------------	----------------

149* AUSTRALIA - QUEENSLAND - Hervey Bay - Wreck
Australian Hydrographic Service (AA452349)

Aus 365 [1215/2009]
On certain copies only
Delete wreck

24° 47'.8 S 152° 46'.1 E

150* AUSTRALIA - QUEENSLAND - Gladstone - South Trees Point - Depth
Australian Hydrographic Service (AA447165, 452668)

Aus 245 [1261/2009]
Insert depth, 16₅m

23° 51'.167 S 151° 19'.882 E

Delete depth, 15₇m

23° 51'.18 S 151° 19'.94 E

151* AUSTRALIA - CORAL SEA - Selfridge Rock - Depths
Geoscience Australia (DHDB 1377050)

Aus 426 [106/2010]
Insert depth, 553m, and extend contour SW to enclose

21° 03'.2 S 156° 53'.4 E

Delete depth, 57m, and enclosing contour with legend, Rep (1975)
depth, 169m, with legend, (1973)Rep

21° 33'.5 S 156° 30'.5 E
21° 02'.0 S 156° 56'.0 E

Aus 4602 (INT 602) [1414/2009]

Delete depth, 104m, and enclosing danger circle
depth, 309m, and enclosing danger circle

21° 33'.0 S 156° 31'.0 E
21° 02'.0 S 156° 56'.0 E

Aus 4621 (INT 621) [1414/2009]

Insert depth, 277m, and extend contour NE to enclose
depth, 1012m

21° 31'.0 S 156° 24'.1 E
21° 03'.2 S 156° 53'.4 E

Delete depth, 104m, and enclosing danger circle with legend, (1975)
depth, 309m, and enclosing danger circle with legend, (1973)
depth, 1531m

21° 33'.0 S 156° 30'.0 E
21° 02'.0 S 156° 56'.0 E
21° 02'.0 S 156° 46'.0 E

AX 4621F [1414/2009]

Insert depth, 277m, and extend contour NE to enclose
depth, 1012m

21° 31'.0 S 156° 24'.1 E
21° 03'.2 S 156° 53'.4 E

Delete depth, 1531m
depth, 104m, and enclosing danger circle with legend, (1975)
depth, 309m, and enclosing danger circle with legend, (1973)

21° 02'.0 S 156° 46'.0 E
21° 33'.0 S 156° 30'.0 E
21° 02'.0 S 156° 56'.0 E

152* AUSTRALIA - QUEENSLAND - Whitsunday Passage - Dent Passage - Pipeline; infrastructure
Maritime Safety Queensland (AA435550 - AA435554)

Aus 253 [290/2009]
Insert accompanying block

20° 22'.0 S 148° 56'.5 E

153* AUSTRALIA - QUEENSLAND - Shute Harbour - Contour
Australian Hydrographic Service (AA447131)

Aus 253 (plan, Shute Harbour) [152/2010]

Insert	contour, between	20° 17'.75 S	148° 47'.85 E
		20° 17'.72 S	148° 47'.86 E
		20° 17'.70 S	148° 47'.84 E

154* AUSTRALIA - QUEENSLAND - Cairns - Trinity Inlet - Swing basin repositioned; infrastructure
Maritime Safety Queensland Notice 4/2010 (AA447763)

Aus 263 [107/2010]

Insert	accompanying block	16° 55'.4 S	145° 47'.0 E
--------	--------------------	-------------	--------------

155* AUSTRALIA - QUEENSLAND - Opolu Reef - Buoy
Maritime Safety Queensland (AA452037, AA452038)

Aus 830 [107/2010]

Insert	port lateral cylindrical buoy, without topmark	16° 40'.54 S	145° 57'.18 E
Delete	buoy	16° 40'.6 S	145° 57'.3 E

156* AUSTRALIA - NORTHERN TERRITORY - Apsley Strait - Port Melville - Port security limit
Office of Transport Security (DHDB 1439923)

Aus 22 [1159/2009]

Insert	accompanying block	11° 25'.5 S	130° 25'.0 E
--------	--------------------	-------------	--------------

157* AUSTRALIA - WESTERN AUSTRALIA - Scott Reef - Depths
Australian Hydrographic Service (AA449415)

Aus 322 [55/2009]

Insert	accompanying block	13° 53'.0 S	121° 55'.0 E
--------	--------------------	-------------	--------------

AX 0322F [55/2009]

Insert	accompanying block	13° 53'.0 S	121° 55'.0 E
--------	--------------------	-------------	--------------

158* AUSTRALIA - WESTERN AUSTRALIA - Bedout Islet to Port Walcott - Chart limits
 Australian Hydrographic Service (AA447679)

Aus 325 [650/2009]

Insert	magenta limits, with legend <i>Aus 739</i> in NE corner, between	18° 52'.97 S 18° 52'.97 S 20° 05'.00 S	118° 50'.00 E 119° 15'.58 E 119° 15'.58 E
Delete	magenta limits, with legend <i>Aus 739</i> , centred on	19° 30'.0 S	119° 02'.0 E

Aus 327 [113/2010]

Insert	magenta limits, with legend <i>Aus 740</i> in NW corner, between	19° 51'.08 S 19° 51'.08 S 20° 47'.08 S 20° 47'.08 S	117° 25'.00 E 116° 59'.72 E 116° 59'.72 E 117° 25'.00 E
	magenta limits, with legend <i>Aus 741</i> in NW corner, between	19° 12'.08 S 19° 12'.08 S 20° 48'.08 S 20° 48'.08 S 19° 12'.08 S	116° 18'.52 E 117° 17'.92 E 117° 17'.92 E 116° 18'.52 E 116° 18'.52 E
Delete	magenta limits, with legend <i>Aus 740</i> , centred on magenta limits, with legend <i>Aus 741</i> , centred on	20° 20'.0 S 20° 00'.0 S	117° 14'.0 E 116° 50'.0 E

159* AUSTRALIA – WESTERN AUSTRALIA - Dampier - Light beacon established
 Dampier Port Authority (AA452361, AA452362, AA453525)

Aus 58 [112/2010]

Insert	light beacon, <i>F.WR & Fl.Y.3s No13C</i>	20° 34'.486 S	116° 45'.459 E
--------	---	---------------	----------------

Aus 59 (plan, Withnell Bay to King Bay) [112/2010]

Insert	light beacon, <i>F.WR & Fl.Y.3s No13C</i> , with light sectors Red 003.1° - 355.9° (7.2°) White 355.9° - 345.4° (10.5°) Red 345.4° - 339.7° (5.7°)	20° 34'.566 S	116° 45'.379 E
--------	---	---------------	----------------

160* AUSTRALIA - WESTERN AUSTRALIA - Montebello Islands - Pipeline northeastwards
 Woodside Energy Ltd (AA439328 - AA439330, AA439357, AA439358)

Aus 328 [113/2010]

Insert	gas pipeline, between	20° 04'.6 S 20° 04'.0 S	115° 39'.0 E 115° 36'.1 E
--------	-----------------------	----------------------------	------------------------------

161* AUSTRALIA - WESTERN AUSTRALIA - Regnard Bay - Shoal disproved
Tri-Surv (AA276899, AA276900)

Aus 327 [158/2010]

Insert	contour, between	20° 43'.9 S	116° 21'.1 E
		20° 44'.5 S	116° 21'.2 E
Delete	depth, 0 ₂ fm, and enclosing contour	20° 44'.2 S	116° 21'.2 E

Aus 741 [NC 15/1/2010]

Insert	contour, between	20° 43'.8 S	116° 21'.0 E
		20° 44'.1 S	116° 21'.1 E
Delete	depth, 0 ₆ m, and enclosing contour	20° 44'.0 S	116° 21'.0 E

Aus 742 [113/2010]

Insert	contour, between	20° 43'.8 S	116° 21'.0 E
		20° 44'.1 S	116° 21'.1 E
Delete	depth, 0 ₄ m, and enclosing contour	20° 44'.0 S	116° 21'.0 E

162* AUSTRALIA - WESTERN AUSTRALIA - Garden Island - Light buoys; towers
Fremantle Ports (AA445496), HMAS *Stirling* (AA441537)

Aus 111 [1106/2009]

Insert	tower	32° 13'.541 S	115° 41'.740 E
	radio tower with legend, (R Lts)	32° 13'.769 S	115° 41'.212 E
	flagstaff	32° 13'.638 S	115° 41'.196 E
	beacon, without topmark	32° 13'.413 S	115° 41'.005 E
	beacon, without topmark	32° 11'.534 S	115° 40'.485 E
Delete	light buoy	32° 13'.59 S	115° 42'.51 E
	monument	32° 11'.25 S	115° 40'.60 E
	radio mast with legend, (11)	32° 12'.61 S	115° 40'.95 E
	radio mast with legend, (16)	32° 12'.62 S	115° 41'.03 E
	radio mast with legend, (18)	32° 12'.66 S	115° 41'.06 E
	radio mast with legend, (10)	32° 12'.67 S	115° 40'.97 E
	radio mast with legend, (R Lts)	32° 13'.43 S	115° 41'.47 E
	radio mast	32° 13'.44 S	115° 41'.53 E
	radio mast	32° 13'.46 S	115° 41'.53 E
	radio mast	32° 13'.46 S	115° 41'.50 E
	chimney	32° 13'.50 S	115° 41'.60 E
	lit mooring buoy	32° 13'.97 S	115° 41'.52 E
	light buoy	32° 13'.05 S	115° 41'.88 E
	light buoy	32° 13'.13 S	115° 42'.29 E
light buoy	32° 14'.18 S	115° 42'.51 E	
light buoy	32° 13'.97 S	115° 42'.67 E	

162* AUSTRALIA - WESTERN AUSTRALIA - Garden Island - Light buoys; towers (continued)

Aus 117 [115/2010]

Insert	radio tower	32° 09'.530 S	115° 39'.918 E	
	anchorage area with magenta legend, <i>Small Craft Anchorage</i> , between	32° 09'.841 S	115° 40'.484 E	
		32° 09'.778 S	115° 40'.568 E	
		32° 09'.472 S	115° 40'.297 E	
		32° 09'.557 S	115° 40'.195 E	
		32° 09'.841 S	115° 40'.484 E	
	tower	32° 13'.541 S	115° 41'.740 E	
	radio tower with legend, (<i>R Lts</i>)	32° 13'.769 S	115° 41'.212 E	
	flagstaff	32° 09'.907 S	115° 40'.349 E	
	flagstaff	32° 13'.638 S	115° 41'.196 E	
	beacon, without topmark	32° 13'.413 S	115° 41'.005 E	
	beacon, without topmark	32° 11'.534 S	115° 40'.485 E	
	Delete	light buoy	32° 13'.59 S	115° 42'.51 E
		light buoy	32° 09'.97 S	115° 40'.71 E
		light buoy	32° 10'.04 S	115° 40'.90 E
light buoy		32° 10'.51 S	115° 41'.10 E	
light buoy		32° 10'.99 S	115° 41'.10 E	
light buoy		32° 11'.09 S	115° 40'.79 E	
light buoy		32° 13'.05 S	115° 41'.88 E	
light buoy		32° 13'.13 S	115° 42'.29 E	
light buoy		32° 14'.18 S	115° 42'.51 E	
monument		32° 11'.25 S	115° 40'.60 E	
radio mast		32° 12'.61 S	115° 40'.95 E	
radio mast		32° 12'.62 S	115° 41'.03 E	
radio mast		32° 12'.66 S	115° 41'.06 E	
radio mast		32° 12'.67 S	115° 40'.97 E	
radio mast		32° 13'.43 S	115° 41'.47 E	
radio mast		32° 13'.44 S	115° 41'.53 E	
radio mast		32° 13'.45 S	115° 41'.50 E	
chimney	32° 13'.50 S	115° 41'.60 E		
lit mooring buoy	32° 13'.97 S	115° 41'.52 E		
light buoy	32° 13'.97 S	115° 42'.67 E		

162* AUSTRALIA - WESTERN AUSTRALIA - Garden Island - Light buoys; towers (continued)**AX 70117 [115/2010]**

Insert	radio tower	32° 09'.530 S	115° 39'.918 E
	anchorage area with magenta legend, <i>Small Craft Anchorage</i> , between	32° 09'.841 S	115° 40'.484 E
		32° 09'.778 S	115° 40'.568 E
		32° 09'.472 S	115° 40'.297 E
		32° 09'.557 S	115° 40'.195 E
		32° 09'.841 S	115° 40'.484 E
	tower	32° 13'.541 S	115° 41'.740 E
	radio tower with legend, (<i>R Lts</i>)	32° 13'.769 S	115° 41'.212 E
	flagstaff	32° 09'.907 S	115° 40'.349 E
	flagstaff	32° 13'.638 S	115° 41'.196 E
	beacon, without topmark	32° 13'.413 S	115° 41'.005 E
	beacon, without topmark	32° 11'.534 S	115° 40'.485 E
Delete	light buoy	32° 13'.59 S	115° 42'.51 E
	light buoy	32° 09'.97 S	115° 40'.71 E
	light buoy	32° 10'.04 S	115° 40'.90 E
	light buoy	32° 10'.51 S	115° 41'.10 E
	light buoy	32° 10'.99 S	115° 41'.10 E
	light buoy	32° 11'.09 S	115° 40'.79 E
	light buoy	32° 13'.05 S	115° 41'.88 E
	light buoy	32° 13'.13 S	115° 42'.29 E
	light buoy	32° 14'.18 S	115° 42'.51 E
	monument	32° 11'.25 S	115° 40'.60 E
	radio mast	32° 12'.61 S	115° 40'.95 E
	radio mast	32° 12'.62 S	115° 41'.03 E
	radio mast	32° 12'.66 S	115° 41'.06 E
	radio mast	32° 12'.67 S	115° 40'.97 E
	radio mast	32° 13'.43 S	115° 41'.47 E
	radio mast	32° 13'.44 S	115° 41'.53 E
	radio mast	32° 13'.45 S	115° 41'.50 E
	chimney	32° 13'.50 S	115° 41'.60 E
	lit mooring buoy	32° 13'.97 S	115° 41'.52 E
	light buoy	32° 13'.97 S	115° 42'.67 E

163* AUSTRALIA - WESTERN AUSTRALIA - Mangles Bay - Buoys; wreck; infrastructure

Department of Transport WA (AA452606)

Aus 117 [162/2010]

Insert	accompanying block	32° 16'.0 S	115° 42'.5 E
--------	--------------------	-------------	--------------

AX 70117 [162/2010]

Insert	accompanying block	32° 16'.0 S	115° 42'.5 E
--------	--------------------	-------------	--------------

164* AUSTRALIA - VICTORIA - Warrnambool - Pipeline established southeastwards*Former Notice - 1401(T)/2009 is cancelled*

Santos Ltd (AA450998, AA450999)

Aus 349 [1366/2009]

Insert	gas pipeline with magenta legend, <i>Gas (see Note)</i> , between	38° 38'.27 S	142° 41'.07 E
		38° 43'.03 S	142° 36'.54 E
		38° 47'.31 S	142° 41'.83 E

165* AUSTRALIA - VICTORIA - Port Phillip - Clifton Springs - Infrastructure

Former Notice - 115(T)/2009 is cancelled
Parks Victoria (AA451733, AA451735)

Aus 157 [1275/2009]

Insert	continuous line, between	38° 08'.771 S	144° 34'.159 E
		38° 08'.812 S	144° 34'.183 E

166* AUSTRALIA - VICTORIA - Port Phillip - Geelong - Corio Quay - Infrastructure

Mapping & GIS Services (AA449274, AA449275)

Aus 153 [770/2009]

Insert	accompanying block	38° 06'.4 S	144° 22'.0 E
--------	--------------------	-------------	--------------

Aus 157 [165/2010]

Insert	accompanying block	38° 06'.4 S	144° 22'.0 E
--------	--------------------	-------------	--------------

167(T)/2010 AUSTRALIA - NEW SOUTH WALES - Port Jackson - Darling Point - Scientific instrument

Date - Until 31 July 2010

AECOM Australia Pty Ltd (AA443700, AA443800, AA451010, AA451011)

A special cylindrical light buoy, *Fl.Y.4s*, exists in position 33° 51'.93 S 151° 14.17 E (WGS84 datum).**Chart temporarily affected - Aus 200 - Aus 202 - AU5X200E****168(T)/2010 AUSTRALIA - QUEENSLAND - Point Lookout - Wreck northwestwards**

Maritime Safety Queensland Notice 116(T)/2010 (AA453469)

A wreck exists in position 27° 23'.75 S 153° 30'.74 E (WGS84 datum).

Mariners are advised to navigate with caution in the area.

Chart temporarily affected - Aus 236 - Aus 814 - AU428153**169(T)/2010 AUSTRALIA - QUEENSLAND - Moreton Bay - Russell Island - Wreck**

Maritime Safety Queensland Notice 128(T)/2010 (AA453970)

A wreck exists in position 27° 38'.69 S 153° 22'.76 E.

Mariners are advised to navigate with caution in the area.

Chart temporarily affected - Aus 236**170(T)/2010 AUSTRALIA - QUEENSLAND - Gladstone - Obstructions**

Maritime Safety Queensland Notice 79(T)/2010 (AA452385)

Anchorage E2 (23° 51'.0 S 151° 35'.6 E) and N12 (23° 51'.0 S 151° 27'.8 E) are closed due to lost anchors.

Chart temporarily affected - Aus 246 - Aus 819 - AU424151**171(T)/2010 AUSTRALIA - QUEENSLAND - Gladstone - Boyne River - Light beacons destroyed**

Maritime Safety Queensland Notice 105(T)/2010 (AA453117)

The light beacons at the entrance to Boyne River (23° 55'.85 S 151° 21'.55 E), have been damaged or destroyed.

Mariners are advised to navigate with caution in the area.

Chart temporarily affected - Aus 246 - AU424151**172(T)/2010 AUSTRALIA - QUEENSLAND - Gladstone - Auckland Channel - Light buoy withdrawn**

Maritime Safety Queensland Notice 75(T)/2010 (AA453140)

A6 light buoy (23° 50'.17 S 151° 16'.55 E) has been temporarily withdrawn.

Chart temporarily affected - Aus 244 - Aus 245 - AU5244X5**173(T)/2010 AUSTRALIA - QUEENSLAND - Port Alma - Oswestry Rock - Light buoy re-established**

Former Notice - 131(T)/2010 is cancelled

Maritime Safety Queensland Notice 68(T)/2010 (AA452402)

Cancel this notice on receipt.

Chart formerly affected - Aus 247 - Aus 265 - AU424150

174(T)/2010 AUSTRALIA - QUEENSLAND - Great Keppel Island - Light beacon destroyed
Maritime Safety Queensland Notice 107(T)/2010 (AA453346)

The isolated danger light beacon (23° 09'.18 S 150° 56'.31 E (WGS84 datum)) has been destroyed.

Mariners are advised to navigate with caution in the area.

Chart temporarily affected - Aus 366 - Aus 367 - Aus 819 - Aus 820 – AX 0367E – AX 0820E - AU424150

175(T)/2010 AUSTRALIA - QUEENSLAND - Coral Point - Light beacon destroyed
Maritime Safety Queensland Notice 89(T)/2010 (AA452874)

The light beacon, *Fl.G.2-5s* (21° 22'.10 S 149° 18'.75 E), has been destroyed; a starboard lateral light buoy, *Fl.G.3s*, exists in situ.

Chart temporarily affected - Aus 249 - Aus 823 – AX 0249E – AX 0823E - AU422149

176(T)/2010 AUSTRALIA - QUEENSLAND - Hay Point to Bailey Islet - Scientific instruments
Former Notice - 133(T)/2010 is cancelled
Maritime Safety Queensland Notice 99(T)/2010 (AA452865)

Special light buoys, *Fl(5)Y.20s*, exist in the following positions:

21° 16'.32 S 149° 18'.70 E
21° 02'.37 S 149° 32'.75 E.

Mariners are not to use these buoys as moorings.

Chart temporarily affected - Aus 249 - Aus 250 - Aus 823 - Aus 824 – AX 0249E – AX 0823E - AU422149 - AU5250P2

177(T)/2010 AUSTRALIA - QUEENSLAND - Upstart Bay - Light buoy off station
Maritime Safety Queensland Notice 96(T)/2010 (AA452864)

The port lateral light buoy, *Fl.R.2-5s* (19° 49'.44 S 147° 42'.33 E), is off station.

Chart temporarily affected - Aus 826 - AU320147

178(T)/2010 AUSTRALIA - QUEENSLAND - Upstart Bay - Light buoy off station
Maritime Safety Queensland Notice 72(T)/2010 (AA453224)

The special light buoy, *Fl.Y.4s* (19° 44'.38 S 147° 37'.48 E), is off station.

Chart temporarily affected - Aus 826 - AU320147

179(T)/2010 AUSTRALIA - WESTERN AUSTRALIA - Browse Island - Scientific instruments
Former Notice - 1459(T)/2009 is cancelled
MetOcean Engineers (AA452527)

Scientific instruments exist as follows:

<i>Position</i>	<i>Remarks</i>
13° 44'.69 S 123° 20'.98 E	lit buoy, <i>Fl(5)Y.20s</i>
13° 44'.59 S 123° 21'.40 E	subsurface
13° 47'.28 S 123° 23'.72 E	lit buoy, <i>Fl(5)Y.20s</i>

Chart temporarily affected - Aus 319 – AX 0319F - AU314123

180(T)/2010 AUSTRALIA - WESTERN AUSTRALIA - Lacepede Channel to Cape Boileau - Scientific instruments*Former Notice - 71(T)/2010 is cancelled**Date - Until 31 July 2010*

MetOcean Engineers (AA447760)

Scientific instruments exist as follows (WGS84 datum):

<i>Position</i>	<i>Remarks</i>
17° 13'.93 S 122° 05'.06 E	subsurface
17° 28'.27 S 122° 05'.03 E	subsurface
17° 30'.07 S 121° 53'.45 E	subsurface
17° 30'.81 S 121° 53'.88 E	lit buoy, <i>Fl(5)Y.20s</i>
17° 43'.53 S 122° 02'.03 E	subsurface

Chart temporarily affected - Aus 323 - Aus 324 - AU418122**181(T)/2010 AUSTRALIA - WESTERN AUSTRALIA - Dampier - Mermaid Sound - Light buoy withdrawn; light buoy established***Former Notice - 72(T)/2010 is cancelled*

Dampier Port Authority Notices 6/2010 (AA453979)

The light buoy (20° 25'.45 S 116° 42'.95 E (WGS84 datum)) has been withdrawn; a special pillar light buoy, Q.Y, exists in situ. The AIS and racon remain non operational.

Chart temporarily affected - Aus 57 - Aus 58 - Aus 741 - AU5XXX58**182(T)/2010 AUSTRALIA - WESTERN AUSTRALIA - North Muiron Island to Locker Island - Scientific instruments***Date - Until 31 August 2010*

MetOcean Engineers (AA454046)

Subsurface scientific instruments exist in the following positions (WGS84 datum):

21° 33'.23 S 114° 15'.25 E
21° 32'.60 S 114° 24'.10 E
21° 34'.30 S 114° 29'.66 E
21° 36'.30 S 114° 32'.35 E
21° 39'.19 S 114° 38'.65 E
21° 40'.20 S 114° 42'.01 E
21° 43'.10 S 114° 49'.39 E.

Chart temporarily affected - Aus 328 - Aus 329 - Aus 743 - Aus 744 - AU422114**183(T)/2010 AUSTRALIA - TASMANIA - Macquarie Harbour - Scientific instruments recovered***Former Notice - 1083(T)/2009 is cancelled*

Marine and Safety Tasmania (AA453424)

Cancel this notice on receipt.

Chart formerly affected - Aus 177 - Aus 792**184(T)/2010 AUSTRALIA - TASMANIA - North West Bay - Snug Point - Wreck salvaged***Former Notice - 416(T)/2008 is cancelled*

Marine and Safety Tasmania (AA453424)

Cancel this notice on receipt.

Chart formerly affected - Aus 171 - Aus 173 - Aus 174

185(T)/2010 AUSTRALIA - TASMANIA - River Derwent - Geilston Bay - Wreck
 Marine and Safety Tasmania Notice M21/2010 (AA453125)

A wreck exists in position 42° 50'.33 S 147° 20'.54 E.

Mariners are advised to navigate with caution in the area.

Chart temporarily affected - Aus 172 - AU5XX172

186(T)/2010 AUSTRALIA - TASMANIA - River Tamar - Dredging operations completed
Former Notice - 1342(T)/2009 is cancelled
 Marine and Safety Tasmania (AA453424)

Cancel this notice on receipt.

Chart formerly affected - Aus 168 - AU5167X8

187(P)/2010 AUSTRALIA - VICTORIA - Crib Point to Flinders - Light beacons to be established
Date - On or about 11 February 2010
 Victorian Notice 16(T)/2010 (AA453356)

Special light beacons will be established as follows;

<i>Position</i>	<i>Remarks</i>
38° 20'.89 S 145° 13'.30 E	<i>Fl. Y.4s</i>
38° 28'.00 S 145° 03'.20 E	<i>Fl. Y.5s</i>

Chart which will be affected - Aus 150 - Aus 151 - Aus 152 - AU439145 - AU5152P3

188(T)/2010 AUSTRALIA - BASS STRAIT - Seismic survey
Date - 30 April 2010
 Environment Resource Group Pty Ltd (AA453254)

MV *Aquila Explorer* with a 6000m towed array is conducting a survey in the area bounded by the following positions (WGS84 datum):

38° 47'.07 S 146° 48'.19 E	38° 12'.61 S 147° 31'.92 E
38° 56'.01 S 148° 28'.79 E	38° 40'.45 S 148° 47'.97 E
38° 49'.86 S 149° 00'.33 E	39° 05'.45 S 148° 41'.15 E
39° 18'.66 S 148° 58'.46 E	39° 51'.73 S 148° 17'.22 E
39° 42'.22 S 148° 04'.85 E	39° 38'.35 S 148° 09'.74 E
39° 30'.75 S 147° 59'.84 E	39° 36'.54 S 147° 52'.51 E.

Chart temporarily affected - Aus 357A - Aus 487 - Aus 800 - Aus 802 - AU439146 - AU439147 - AU439148 - AU440147 - AU440148

HYDROGRAPHIC REPORTS

<i>Locality</i>	<i>Report</i>	<i>Ship/Authority</i>	<i>Observer</i>
NSW- Botany Bay	Buoys	<i>MV Diamond Princess</i>	
WA- Montebello Islands	Buoys	<i>MV Four Rainbow</i>	

NAVIGATION WARNINGS

The following radio messages have been received during the period to 12 February 2010. Signal copies of these messages may be destroyed. It is recommended that the reprint of Navigational Warnings should be kept in a file or a book divided into areas. Cancellation should be made on receipt of signals and reprints.

Rigs on location other than those listed in the latest Section III summary are the subject of Radio Navigational Warnings. Rigs in transit will not be the subject of Warnings.

AUSCOAST WARNING

- 026 Cancelled.
 027 Special purpose vessel *Geo Eagle* conducting seismic survey in area bounded by 20° 19'.5 S to 20° 37'.0 S and 111° 35'.2 E to 112° 14'.5 E. 5M clearance requested.
 028 Cancelled.
 029 Drill rig *Atwood Eagle* in position 20° 35'.1 S 114° 36'.6 E. 2.5M clearance requested.
 030 Drill rig *Ensco 7500* in position 19° 57'.2 S 114° 52'.7 E. 2.5M clearance requested.
 031 Cancelled.
 032 Cancelled.
 033 Special purpose vessel *Aquila Explorer* conducting seismic survey in area bounded by 38° 26'.0 S to 39° 01'.0 S and 143° 53'.0 E to 144° 41'.0 E. 4M clearance requested.
 034 Drill rig *Ocean Epoch* in position 21° 32'.3 S 114° 05'.6 E. 2.5M clearance requested.

NAVAREA X WARNINGS

Nil.

Navigational warnings in force as at 120001UTC FEB 10.**Auscoast**

2009 297 304 306 310 314

2010 007 008 013 014 016 021 024 027 029 030 033

Navarea X

004

Summary of mobile drilling rigs as at 120001UTC FEB 10.

<i>Name</i>	<i>Position</i>
Kan Tan IV	39° 47'.34 S 145° 26'.21 E
Ocean Patriot	38° 09'.71 S 148° 12'.97 E
Ocean Shield	11° 05'.90 S 127° 03'.70 E
Transocean Legend	13° 40'.07 S 122° 16'.32 E
Jack Bates	19° 23'.55 S 114° 19'.59 E
Stena Clyde	20° 05'.30 S 115° 09'.70 E
Nan Hai 6	21° 26'.23 S 114° 02'.48 E
Ocean Epoch	21° 30'.16 S 114° 05'.72 E
Ensco 7500	21° 32'.30 S 114° 05'.60 E
Atwood Eagle	20° 35'.10 S 114° 36'.60 E

NAVAREA XIV WARNINGS

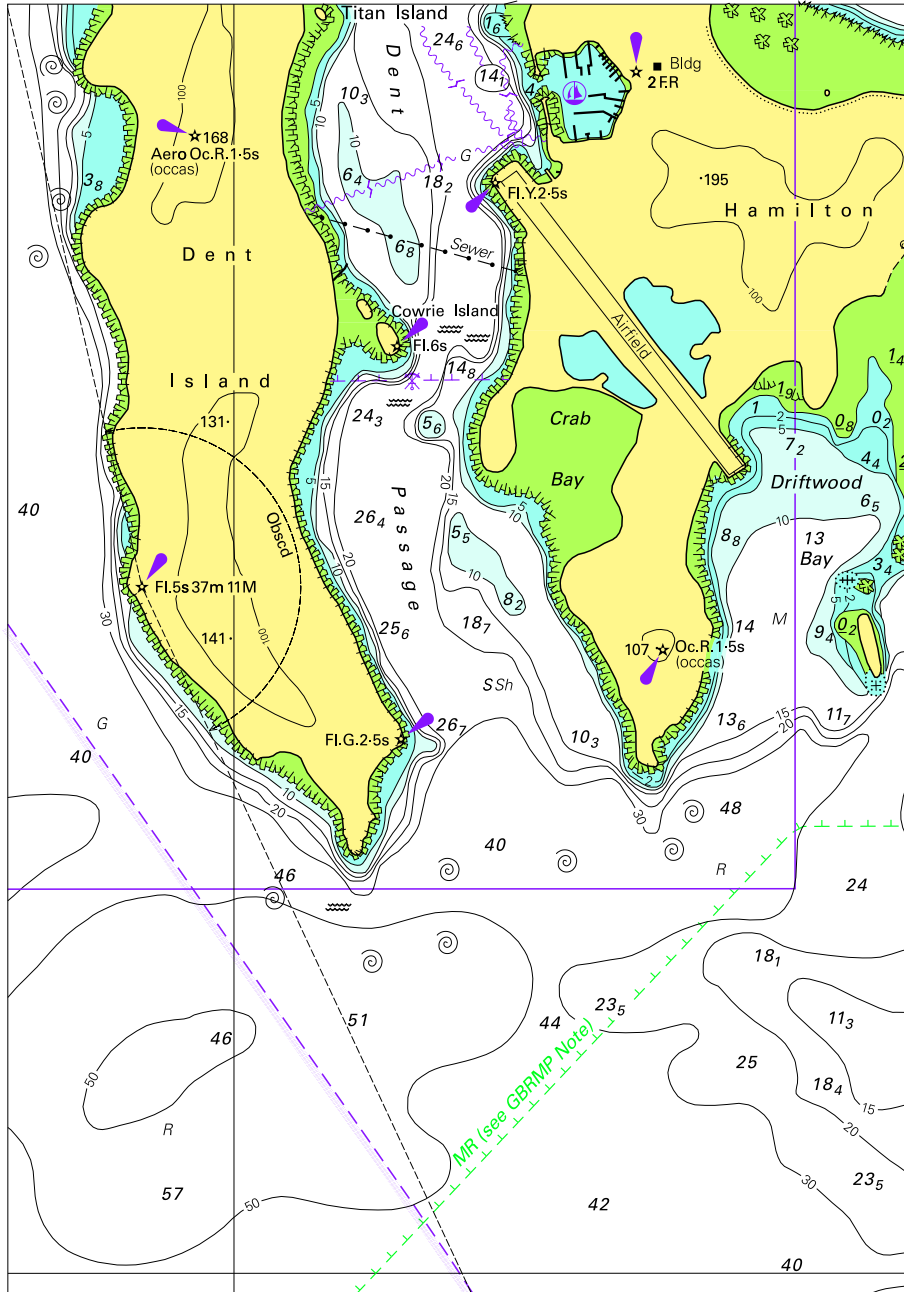
- 004 Cancelled.
 005 Cancelled.

Navarea XIV warnings in force as at 120001UTC FEB 10.

2009 059

2010 003

To accompany Australian Notice to Mariners 152/2010

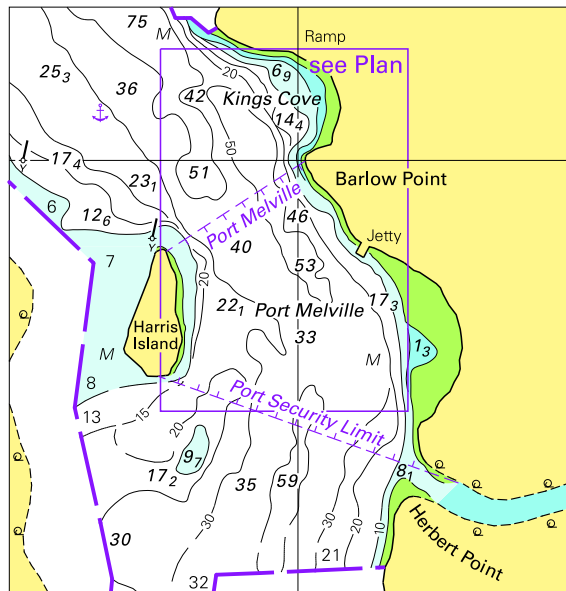


Block for chart Aus 253

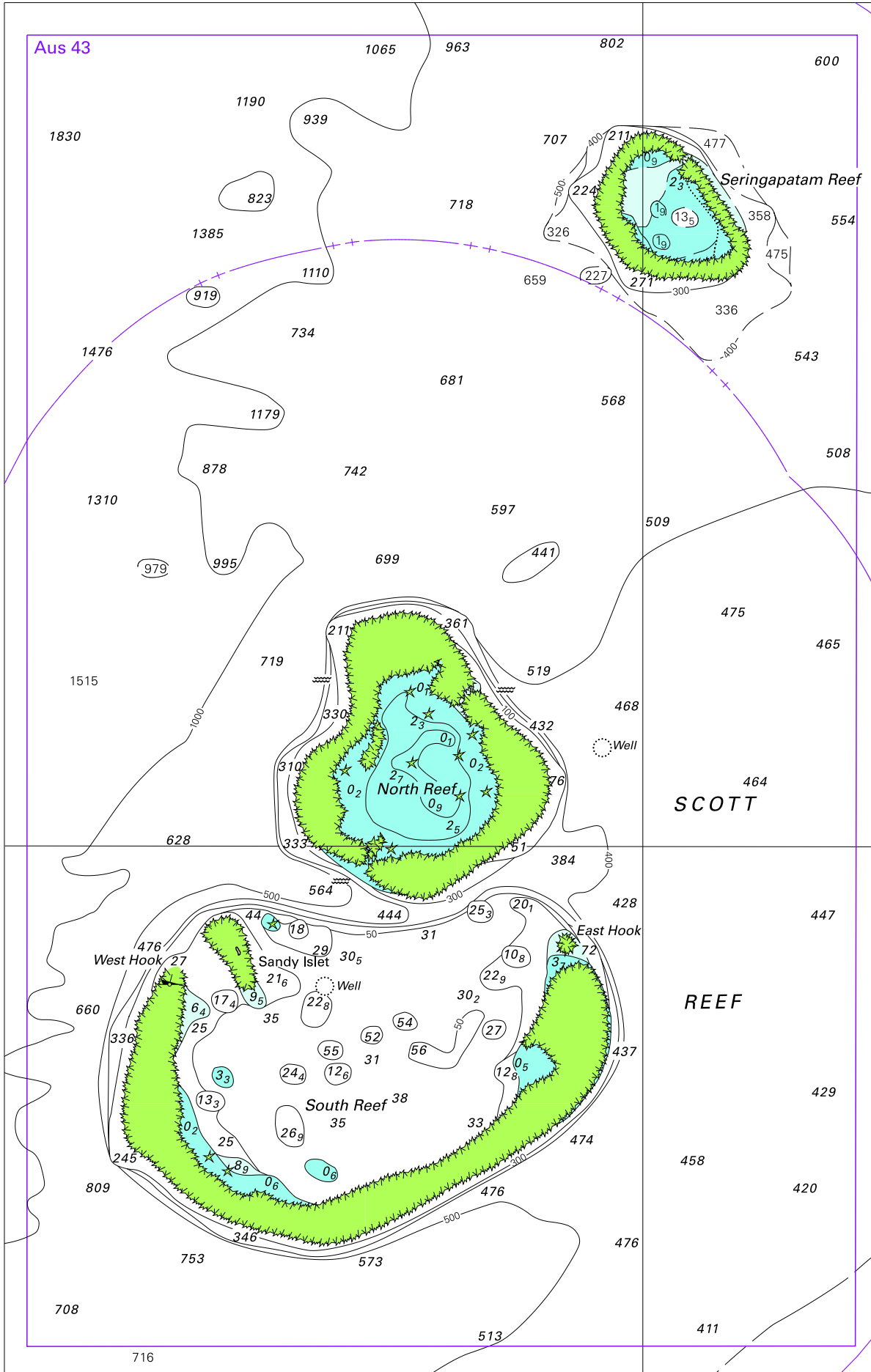
© Commonwealth of Australia 2010

(119.6 x 170.5mm)

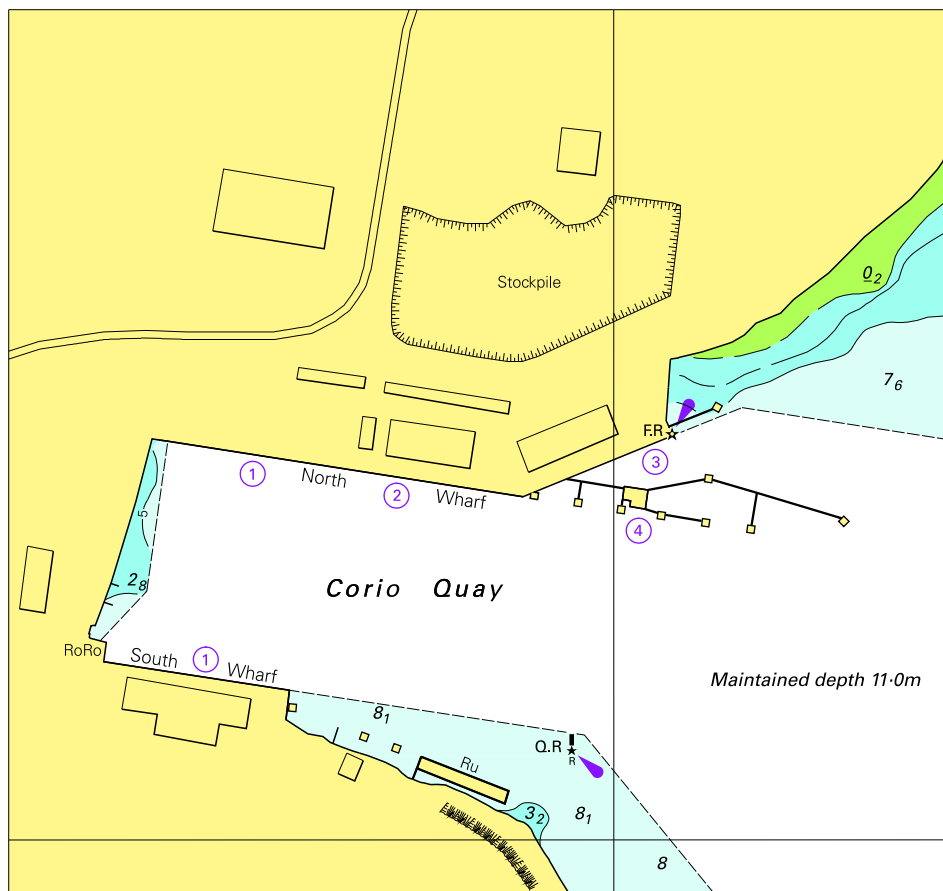
To accompany Australian Notice to Mariners 156/2010



© Commonwealth of Australia 2010
Block for chart Aus 22 (77.4 x 74.5mm)



To accompany Australian Notice to Mariners 166/2010

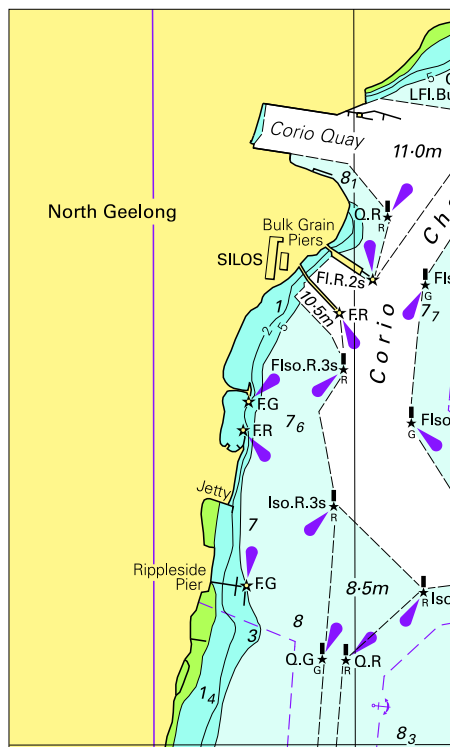


Block for chart Aus 153

© Commonwealth of Australia 2010

(124.9 x 117.1mm)

To accompany Australian Notice to Mariners 166/2010



© Commonwealth of Australia 2010
Block for chart Aus 157 (58.4 x 97.9mm)