



29 January 2010

Edition 2

Australian Notices to Mariners are the authority for correcting Australian Charts and Publications

---

# AUSTRALIAN NOTICES TO MARINERS

Notices 96 – 143 

Published fortnightly by the Australian Hydrographic Service

Commodore R. NAIRN RAN  
*Hydrographer of Australia*

---

## SECTIONS.

- I. **Australian Notices to Mariners, including blocks and notes.**
- II. **Hydrographic Reports.**
- III. **Navigational Warnings.**

## SUPPLEMENTS.

- I. **Tracings**
- II. **Cumulative List of Australian Notices to Mariners.**
- III. **Temporary and Preliminary Notices in force.**
- IV. **Amendments to Admiralty List of Lights and Fog Signals (Vol K),  
Radio Signals (NP 281(2), 282, 283(2), 285, 286(4)) and Sailing  
Directions (NP 9, 13, 14, 15, 33, 34, 35, 36, 39, 44, 51, 60, 61, 62, 100, 136).**

---

© Commonwealth of Australia 2010

This work is copyright. Apart from any use permitted under the Copyright Act 1968, no part may be reproduced by any process, adapted, communicated or commercially exploited without prior written permission from The Commonwealth represented by the Australian Hydrographic Service.

## IMPORTANT NOTICE

This edition of Notices to Mariners includes all significant information affecting AHS products which the AHS has become aware of since the last edition. All reasonable efforts have been made to ensure the accuracy and completeness of the information, including third party information, on which these updates are based. The AHS regards third parties from which it receives information as reliable, however the AHS cannot verify all such information and errors may therefore exist. The AHS does not accept liability for errors in third party information.

---

## GENERAL INSTRUCTIONS

The substance of these notices should be inserted on the charts affected.

Bearings are referred to the true compass and are reckoned clockwise from North; those relating to lights are given as seen by an observer from seaward. Positions quoted in permanent notices relate to the horizontal datum for the chart(s). When preliminary or temporary notices affect multiple charts, positions will be provided in relation to only one horizontal datum and that datum will be specified. When the multiple charts do not have a common horizontal datum, mariners will be required to adjust the position(s) for those charts not on the specified datum. The range quoted for a light is its nominal range. Depths are with reference to the chart datum of each chart. Heights are above mean high water springs or mean higher high water, as appropriate.

The capital letter (P) or (T) after the number of any notice denotes a preliminary or temporary notice respectively, which are contained separately at the end of the permanent notices. A star (\*) adjacent to the number of a notice indicates that the notice is based on original information.

---

## REPORTING OF DANGERS

Mariners are particularly requested to notify the AUSTRALIAN HYDROGRAPHIC SERVICE, Locked Bag 8801 Wollongong, NSW 2500 (Fax 02-4223 6599, e-mail [Hydro.NTM@defence.gov.au](mailto:Hydro.NTM@defence.gov.au) or, alternatively by filling in and submitting the [Hydrographic Notes](#) forms located on the web site – [www.hydro.gov.au](http://www.hydro.gov.au)), immediately on the discovery of new dangers or suspected dangers to navigation. For changes or defects in aids to navigation notify AusSAR (Fax 02-6230 6868 or email [rccaus@amsa.gov.au](mailto:rccaus@amsa.gov.au)).

---

## AUTHORISED USE

Copies of Australian notices are available free of charge from the Australian Hydrographic Service (AHS) website ([www.hydro.gov.au](http://www.hydro.gov.au)) and through the eNotices (email) service ([www.hydro.gov.au/enotices/enotices.htm](http://www.hydro.gov.au/enotices/enotices.htm)).

Individual Notices may be copied for the purpose of inserting Notice substance on official charts and publications. Paper copies may be printed by chart agents and distributed to customers on a cost recovery basis. Participating chart agents are listed on the AHS website as providing a 'Paper Notices to Mariners' service ([www.hydro.gov.au/prodserv/distributors/distributors.htm](http://www.hydro.gov.au/prodserv/distributors/distributors.htm)). Copies of the notices may not be sold for profit without prior written agreement.

## NUMERICAL INDEX OF NOTICES TO MARINERS

### Edition No 2

Notices	Aus Chart, INT Chart, ENC Cell, AHP, BA Pubs
96.....	Aus 155, 631, 679, 746, 786, 787, AU5X81P1, NP 283(2)
97.....	Amendment to Australian Notice to Mariners No 2
98.....	Aus 193, AX 70193
99.....	Aus 194, 195
100.....	Aus 424, 489, 810
101.....	Aus 812
102.....	Aus 813
103.....	Aus 364, 424, 814
104.....	Aus 235, 236, 814
105.....	Aus 238
106.....	Aus 367, 426, AX 0367E
107.....	Aus 262, 263, 830, AX 6027S, 63262
108.....	Aus 715
109.....	Aus 26, 309, 722, AX 0309F, 72026, 72309, 72722
110.....	Aus 26, 28, 722, AX 72026, 72722
111.....	Aus 57, 58, 59
112.....	Aus 57, 58, 59
113.....	Aus 327, 328, 415, 416, 742, 4708, INT 708, AX 0415F, 4708F
114.....	Aus 117, AX 70117
115.....	Aus 114, 117, AX 70117
116.....	Aus 119
117.....	Aus 778
118.....	Aus 137
119.....	Aus 178, 790
120.....	Aus 790
121.....	Aus 154
122.....	Aus 154
123(T).....	Aus 230, 813, 814
124(T).....	Aus 236, AU428153
125(T).....	Aus 236, AU428153
126(T).....	Aus 237, AU5237X8
127(T).....	Aus 236, 237, AU428153, 5237X8
128(T).....	Aus 236, AU428153
129(T).....	Aus 241
130(T).....	Aus 244, 245, 246
131(T).....	Aus 247, 265, AU424150
132(T).....	Aus 247, 819, 820, AU424151
133(T).....	Aus 249, 250, 823, 824, AX 0249E, 0823E, AU422149, 5250P2
134(T).....	Aus 256, 827, AU320147
135(T).....	Aus 258, AU5258P1
136(T).....	Aus 263, AU5262X4
137(P).....	Aus 57, 58, 59
138(T).....	Aus 327, 742, AU421116
139(T).....	Aus 62, 742, 743, AU421115
140(T).....	Aus 64, 743, 744, AU422114
141(T).....	Aus 754, AX 0754E, 66002, AU432115
142(T).....	Aus 112, 113, 117, AX 63112, 70117, AU5XX113
143(T).....	Aus 167, AU5167X8

## NUMERICAL INDEX OF CHARTS AFFECTED

## Edition No 2

Aus Chart	Notices	Aus Chart	Notices
Aus 26.....	109, 110	Aus 786 .....	96
Aus 28.....	110	Aus 787 .....	96
Aus 57.....	111, 112, 137(P)	Aus 790 .....	119, 120
Aus 58.....	111, 112, 137(P)	Aus 810 .....	100
Aus 59.....	111, 112, 137(P)	Aus 812 .....	101
Aus 62.....	139(T)	Aus 813 .....	102, 123(T)
Aus 64.....	140(T)	Aus 814 .....	103, 104, 123(T)
Aus 112.....	142(T)	Aus 819 .....	132(T)
Aus 113.....	142(T)	Aus 820 .....	132(T)
Aus 114.....	115	Aus 823 .....	133(T)
Aus 117.....	114, 115, 142(T)	Aus 824 .....	133(T)
Aus 119.....	116	Aus 827 .....	134(T)
Aus 137.....	118	Aus 830 .....	107
Aus 154.....	121, 122	Aus 4708 .....	113
Aus 155.....	96	AX 0249E .....	133(T)
Aus 167.....	143(T)	AX 0309F .....	109
Aus 178.....	119	AX 0367E .....	106
Aus 193.....	98	AX 0415F .....	113
Aus 194.....	99	AX 0754E .....	141(T)
Aus 195.....	99	AX 0823E .....	133(T)
Aus 230.....	123(T)	AX 4708F .....	113
Aus 235.....	104	AX 6027S .....	107
Aus 236.....	104, 124(T), 125(T), 127(T), 128(T)	AX 63112 .....	142(T)
Aus 237.....	126(T), 127(T)	AX 63262 .....	107
Aus 238.....	105	AX 66002 .....	141(T)
Aus 241.....	129(T)	AX 70117 .....	114, 115, 142(T)
Aus 244.....	130(T)	AX 70193 .....	98
Aus 245.....	130(T)	AX 72026 .....	109, 110
Aus 246.....	130(T)	AX 72309 .....	109
Aus 247.....	131(T), 132(T)	AX 72722 .....	109, 110
Aus 249.....	133(T)		
Aus 250.....	133(T)	INT Chart	Notices
Aus 256.....	134(T)	INT 708 .....	113
Aus 258.....	135(T)		
Aus 262.....	107	ENC Cell	Notices
Aus 263.....	107, 136(T)	AU320147 .....	134(T)
Aus 265.....	131(T)	AU421115 .....	139(T)
Aus 309.....	109	AU421116 .....	138(T)
Aus 327.....	113, 138(T)	AU422114 .....	140(T)
Aus 328.....	113	AU422149 .....	133(T)
Aus 364.....	103	AU424150 .....	131(T)
Aus 367.....	106	AU424151 .....	132(T)
Aus 415.....	113	AU428153 .....	124(T), 125(T), 127(T), 128(T)
Aus 416.....	113	AU432115 .....	141(T)
Aus 424.....	100, 103	AU5X81P1 .....	96
Aus 426.....	106	AU5XX113 .....	142(T)
Aus 489.....	100	AU5167X8 .....	143(T)
Aus 631.....	96	AU5237X8 .....	126(T), 127(T)
Aus 679.....	96	AU5250P2 .....	133(T)
Aus 715.....	108	AU5258P1 .....	135(T)
Aus 722.....	109, 110	AU5262X4 .....	136(T)
Aus 742.....	113, 138(T), 139(T)		
Aus 743.....	139(T), 140(T)		
Aus 744.....	140(T)		
Aus 746.....	96		
Aus 754.....	141(T)		
Aus 778.....	117		

**96 AUSTRALIA - Product**

Australian Hydrographic Service (AA451244, AA451781), British Admiralty (AA451056)

**New Electronic Navigation Chart (Seafarer ENC)**

<i>Cell Name</i>	<i>Released</i>	<i>Title</i>
AU5X81P1	January 2010	Western Australia - Port of Geraldton

**New Chart to be published shortly**

<i>Chart</i>	<i>Title</i>	<i>Scale</i>	<i>Expected Publication Date</i>	<i>Expected Stock Availability</i>
Aus 155	Australia - South Coast - Victoria - Approaches to Port of Melbourne Plans: St Kilda Sandringham Brighton Altona	1:37 500 1:10 000 1:10 000 1:10 000 1:7 500	29 January 2010	8 March 2010
Aus 631	Papua New Guinea - North East Coast - Approaches to Sewa Bay	1:15 000	29 January 2010	8 March 2010
Aus 679	Papua New Guinea - New Britain - Duke of York Islands Plan: Mioko Harbour	1:37 500 1:12 500	29 January 2010	8 March 2010
Aus 746	Australia - West Coast - Western Australia - Point Maud to Point Quobba	1:150 000	29 January 2010	8 March 2010
Aus 787	Australia - South Coast - Victoria - Childers Cove to Cape Otway	1:150 000	29 January 2010	8 March 2010

**Chart to be permanently withdrawn without replacement**

<i>Chart</i>	<i>On publication of new chart</i>
Aus 786	Aus 787

**Admiralty publication**

<i>NP No</i>	<i>Title</i>	<i>Date</i>	<i>Remarks</i>
NP 283(2)	Admiralty List of Radio Signals. Maritime Safety Information Services. The Americas, Far East and Oceania Edition 2010.	28/1/2010	The 2009/10 edition of NP 283(2) is cancelled.

For further details refer to the AHS website at [www.hydro.gov.au](http://www.hydro.gov.au) for new edition and new chart stock arrival information.

When placing orders with a chart agent, mariners should advise whether their order pertains to the current edition or the new edition.

**97 AUSTRALIA - Product - Amendment to Australian Notice to Mariners No 2**

Australian Hydrographic Service (AA450571)

Page 13

*Insert* new chart agent:  
**Seamaster Fishing Supplies**  
31 Belair Drive  
Port Lincoln 5606

Telephone	+61 (0)8 8683 5130
Fax	+61 (0)8 8683 5131
Email	comfishing@bigpond.com.au
Website	www.commercial-fishing.net

**N**

Page 14

*Delete* entry for West Coast Tackle Western Australia

**98\* AUSTRALIA - NEW SOUTH WALES - Jervis Bay - Marine farms**  
K McGregor, NSW Maritime (AA448194)

**Aus 193 [1256/2009]**

Delete	marine farm, centred on	35° 03'.94 S	150° 40'.89 E
	marine farm, centred on	35° 03'.57 S	150° 41'.17 E

**AX 70193 [1256/2009]**

Delete	marine farm, centred on	35° 03'.94 S	150° 40'.89 E
	marine farm, centred on	35° 03'.57 S	150° 41'.17 E

**99\* AUSTRALIA - NEW SOUTH WALES - Port Kembla - Light altered**  
Port Kembla Port Corporation Notice 1/2010 (AA449989)

**Aus 194 [31/2009]**

Insert	light sectors	34° 28'.22 S	150° 54'.81 E
	green 116.5° - 119.0° (2.5°)		
	white 119.0° - 121.5° (2.5°)		
	red 121.5° - 124.0° (2.5°)		

Amend	light to <i>F.WRG &amp; Q.2M</i>	34° 28'.22 S	150° 54'.81 E
	legend to <i>Dir 120.3°</i>	34° 27'.73 S	150° 53'.81 E

**Aus195 [NE 21/11/2008]**

Amend	light to <i>F.WRG &amp; Q.2M</i>	34° 28'.22 S	150° 54'.81 E
-------	----------------------------------	--------------	---------------

**100\* AUSTRALIA - NEW SOUTH WALES - Sugarloaf Point - Depth northeastwards disproved**  
Geoscience Australia (DHDB 1429802)

**Aus 424 [1306/2009]**

Delete	depth, 106m	32° 20'.5 S	152° 57'.3 E
--------	-------------	-------------	--------------

**Aus 489 [1351/2009]**

Delete	depth, 194m, and enclosing contour	32° 20'.5 S	152° 57'.3 E
--------	------------------------------------	-------------	--------------

**Aus 810 [1351/2009]**

Delete	depth, 194m, and enclosing contour	32° 20'.5 S	152° 57'.3 E
--------	------------------------------------	-------------	--------------

**101\* AUSTRALIA - NEW SOUTH WALES - North West Solitary Island - Depths eastwards disproved**  
Geoscience Australia (DHDB 1429802)

**Aus 812 [1045/2009]**

Delete	depth, 292m, and enclosing contour	30° 05'.6 S	153° 34'.9 E
	depth, 383m, and enclosing contour	30° 04'.5 S	153° 36'.7 E
	depth, 95m, and enclosing contour	29° 59'.9 S	153° 33'.5 E
	depth, 73m, and enclosing contour	29° 59'.4 S	153° 34'.2 E
	depth, 56m, and enclosing contour	29° 58'.7 S	153° 35'.2 E

**102\* AUSTRALIA - NEW SOUTH WALES - Evans Head to Point Danger - Depths eastwards disproved**  
Geoscience Australia (DHDB 1429802)

**Aus 813 [858/2009]**

Delete	depth, 294m, and enclosing contour	29° 10'.9 S	153° 52'.6 E
	depth, 650m, and enclosing contour	28° 43'.6 S	153° 55'.1 E
	depth, 340m, and enclosing contour	28° 41'.5 S	153° 56'.0 E
	depth, 235m, and enclosing contour	28° 39'.8 S	153° 56'.7 E
	depth, 1993m, and enclosing contour	28° 26'.5 S	154° 09'.8 E
	depth, 951m, and semi enclosing contour	28° 08'.6 S	154° 08'.6 E

**103\* AUSTRALIA - QUEENSLAND - North Stradbroke Island - Point Lookout - Historic wreck northeastwards**  
Department of Environment, Water, Heritage and the Arts (AA448152)

**Aus 364 [1306/2009]**

Insert	historic wreck with magenta legend, <i>Historic Wk with Protected Zone (see Note)</i>	27° 17'.07 S	153° 59'.24 E
--------	---	--------------	---------------

**Aus 424 [100/2010]**

Insert	historic wreck with magenta legend, <i>Historic Wk with Protected Zone</i>	27° 17'.0 S	153° 59'.2 E
--------	--	-------------	--------------

**Aus 814 [934/2009]**

Insert	historic wreck with magenta legend, <i>Historic Wk with Protected Zone (see Note)</i>	27° 17'.07 S	153° 59'.16 E
--------	---	--------------	---------------

**104\* AUSTRALIA - QUEENSLAND - Moreton Bay - North East Channel - Lights buoys altered**

*Former Notice - 660(T)/2009 is cancelled*  
Maritime Safety Queensland Notice 23/2010 (AA449986, AA450254)

**Aus 235 [934/2009]**

Insert	port lateral pillar light buoy, <i>Fl.R.2.5s NE2</i> , without topmark	26° 57'.46 S	153° 20'.51 E
	starboard lateral pillar light buoy, <i>Fl.G.4s NE1</i> , without topmark	26° 59'.90 S	153° 19'.96 E
	port lateral pillar light buoy, <i>Fl.R.2.5s NE4</i> , without topmark	27° 02'.30 S	153° 20'.80 E
Delete	light buoy	26° 59'.5 S	153° 20'.3 E
	light buoy	27° 00'.9 S	153° 20'.4 E
	light buoy	26° 58'.0 S	153° 20'.5 E
	light buoy	27° 02'.3 S	153° 20'.8 E

**Aus 236 [934/2009]**

Insert	port lateral pillar light buoy, <i>Fl.R.2.5s NE4</i> , without topmark	27° 02'.30 S	153° 20'.80 E
	starboard lateral pillar light buoy, <i>Fl.G.4s NE1</i> , without topmark	26° 59'.90 S	153° 19'.96 E
Amend	light buoy to <i>Q(3)10s NE3</i>	27° 04'.7 S	153° 21'.4 E
Delete	light buoy	26° 58'.0 S	153° 20'.5 E
	light buoy	26° 59'.5 S	153° 20'.3 E
	light buoy	27° 00'.9 S	153° 20'.4 E
	light buoy	27° 02'.3 S	153° 20'.8 E

**104\* AUSTRALIA - QUEENSLAND - Moreton Bay - North East Channel - Lights buoys altered (continued)****Aus 814 [103/2010]**

Insert	port lateral pillar light buoy, <i>Fl.R.2.5s NE2</i> , without topmark	26° 57'.56 S	153° 20'.45 E
Delete	light buoy	26° 58'.1 S	153° 20'.5 E
	depth, 4 <sub>5</sub> m	26° 57'.3 S	153° 20'.5 E

**105\* AUSTRALIA - QUEENSLAND - Brisbane River - Hamilton Reach - Berths**

Maritime Safety Queensland Notice 21/2010 (AA448310), Port of Brisbane Corporation (AA451587, AA451588, AA451592)

**Aus 238 [1353/2009]**

Insert	dashed line, between	27° 26'.514 S	153° 04'.258 E
		27° 26'.532 S	153° 04'.251 E
	dashed line, between	27° 26'.574 S	153° 04'.472 E
		27° 26'.593 S	153° 04'.465 E
Move	maintained depth, 10.3m	27° 26'.56 S	153° 04'.38 E
	to	27° 26'.60 S	153° 04'.50 E
Delete	berth desig 2	27° 26'.54 S	153° 04'.33 E
	dashed line, between	27° 26'.53 S	153° 04'.25 E
		27° 26'.59 S	153° 04'.47 E

**Aus 238 (plan, Hamilton Reach)**

Insert	dashed line, between	27° 26'.514 S	153° 04'.258 E
		27° 26'.532 S	153° 04'.251 E
	dashed line, between	27° 26'.574 S	153° 04'.472 E
		27° 26'.593 S	153° 04'.465 E
Delete	berth desig 2	27° 26'.54 S	153° 04'.33 E
	dashed line, between	27° 26'.53 S	153° 04'.25 E
		27° 26'.59 S	153° 04'.47 E
	maintained depth, 10.3m	27° 26'.56 S	153° 04'.38 E

**106\* AUSTRALIA - QUEENSLAND - Swain Reefs - Hill Reef - Depths**

LADS Flight (DHDB 624752)

**Aus 367 [1262/2009]**

Insert	depth, 20 <sub>8</sub> m, enclosed by contour	21° 51'.98 S	152° 41'.22 E
--------	---	--------------	---------------

**Aus 426 [1306/2009]**

Insert	depth, 11fm, enclosed by contour	21° 52'.0 S	152° 41'.2 E
Substitute	depth, 9fm, for depth, 10 <sub>2</sub> fm	21° 53'.2 S	152° 43'.5 E
Delete	depth, 14fm, and enclosing contour with legend SD	21° 50'.0 S	152° 42'.0 E
	legend, SD	21° 53'.0 S	152° 46'.0 E

**AX 0367E [1262/2009]**

Insert	depth, 20 <sub>8</sub> m, enclosed by contour	21° 51'.98 S	152° 41'.22 E
--------	---	--------------	---------------

**107\* AUSTRALIA - QUEENSLAND - Cairns - Light beacons; light altered**  
Maritime Safety Queensland (AA448396), UKHO (AA449917)

**Aus 262** [1356/2009]

Delete	structure colour, BRB	16° 54'.30 S	145° 47'.28 E
	structure colour, BRB	16° 53'.94 S	145° 47'.37 E

**Aus 263** [1356/2009]

Delete	structure colour, BRB	16° 53'.94 S	145° 47'.35 E
	structure colour, B	16° 53'.98 S	145° 47'.47 E
	structure colour, R	16° 54'.03 S	145° 47'.56 E

**Aus 830** [1356/2009]

Amend	light to <i>Iso.WRG.4s 11M</i>	16° 55'.2 S	145° 46'.8 E
-------	--------------------------------	-------------	--------------

**AX 6027S** [1356/2009]

Amend	light to <i>Iso.WRG.4s 11M</i>	16° 55'.2 S	145° 46'.8 E
-------	--------------------------------	-------------	--------------

**AX 63262** [1356/2009]

Delete	structure colour, BRB	16° 54'.30 S	145° 47'.28 E
	structure colour, BRB	16° 53'.94 S	145° 47'.37 E

**108\* AUSTRALIA - NORTHERN TERRITORY - Truant Island - Depth**

Australian Hydrographic Service (AA447534)

**Aus 715** [1157/2009]

*On certain copies only*

Insert	depth, 7m	11° 38'.86 S	136° 50'.27 E
--------	-----------	--------------	---------------

**109\* AUSTRALIA - NORTHERN TERRITORY - Darwin - Pilot boarding place repositioned**

Darwin Port Authority (AA448084)

**Aus 26** [1422/2009]

Move	pilot boarding place, centred on	12° 24'.3 S	130° 46'.2 E
	to	12° 24'.5 S	130° 46'.0 E

**Aus 309** [1159/2009]

Move	pilot boarding place, centred on	12° 24'.3 S	130° 46'.2 E
	to	12° 24'.5 S	130° 46'.0 E

**Aus 722** [1269/2009]

Move	pilot boarding place, centred on	12° 24'.3 S	130° 46'.2 E
	to	12° 24'.5 S	130° 46'.0 E

**AX 0309F** [1159/2009]

Move	pilot boarding place, centred on	12° 24'.3 S	130° 46'.2 E
	to	12° 24'.5 S	130° 46'.0 E

**AX 72026** [1422/2009]

Move	pilot boarding place, centred on	12° 24'.3 S	130° 46'.2 E
	to	12° 24'.5 S	130° 46'.0 E

**AX 72309** [1159/2009]

Move	pilot boarding place, centred on	12° 24'.3 S	130° 46'.2 E
	to	12° 24'.5 S	130° 46'.0 E

**AX 72722** [1269/2009]

Move	pilot boarding place, centred on	12° 24'.3 S	130° 46'.2 E
	to	12° 24'.5 S	130° 46'.0 E

**110\* AUSTRALIA - NORTHERN TERRITORY - Darwin - East Arm - Depths**

Fugro Survey Pty Ltd (DHDB 1062470)

**Aus 26 [109/2010]**Substitute depth, 4<sub>2</sub>m, for depth, 2<sub>6</sub>m 12° 29'.5 S 130° 52'.4 E**Aus 28 [825/2009]**Insert depth, 0<sub>6</sub>m (a) 12° 30'.042 S 130° 53'.417 Edepth, 1<sub>2</sub>m, (b) and extend contour SE to enclose (a)  
and (b) 12° 30'.070 S 130° 53'.474 ESubstitute depth, 4<sub>2</sub>m, for depth, 2<sub>6</sub>m 12° 29'.46 S 130° 52'.39 EDelete depth, 2<sub>2</sub>m 12° 30'.07 S 130° 53'.44 E**Aus 722 [109/2010]**Substitute depth, 4<sub>2</sub>m, for depth, 2<sub>6</sub>m 12° 29'.5 S 130° 52'.4 E**AX 72026 [109/2010]**Substitute depth, 4<sub>2</sub>m, for depth, 2<sub>6</sub>m 12° 29'.5 S 130° 52'.4 E**AX 72722 [109/2010]**Substitute depth, 4<sub>2</sub>m, for depth, 2<sub>6</sub>m 12° 29'.5 S 130° 52'.4 E**111\* AUSTRALIA - WESTERN AUSTRALIA - Dampier - King Bay - Infrastructure**

Mermaid Marine Australia Ltd (AA384777 - AA384779)

**Aus 57 [36/2010]**

Insert accompanying block 20° 37'.0 S 116° 45'.0 E

**Aus 58 [604/2009]**

Insert accompanying block 20° 37'.0 S 116° 45'.0 E

**Aus 59 (plan, Withnell Bay to King Bay) [1425/2009]**

Delete light 20° 38'.01 S 116° 44'.95 E

**112\* AUSTRALIA - WESTERN AUSTRALIA - Dampier - Mermaid Sound - Depths**

Woodside Energy Ltd (DHDB 1369344)

**Aus 57 [111/2010]**Insert depth, 4<sub>6</sub>m, enclosed by contour 20° 37'.21 S 116° 40'.75 ESubstitute depth, 4<sub>6</sub>m, enclosed by contour for depth, 5<sub>6</sub>m 20° 37'.38 S 116° 40'.44 EDelete depth, 9<sub>3</sub>m 20° 37'.3 S 116° 40'.7 E**Aus 58 [111/2010]**Insert depth, 4<sub>6</sub>m, enclosed by contour 20° 37'.377 S 116° 40'.441 Edepth, 4<sub>6</sub>m, enclosed by contour 20° 37'.212 S 116° 40'.747 EDelete depth, 5<sub>6</sub>m 20° 37'.40 S 116° 40'.43 Edepth, 9<sub>3</sub>m 20° 37'.25 S 116° 40'.74 E**Aus 59 (plan, Dampier Wharves) [111/2010]**Insert depth, 4<sub>6</sub>m, enclosed by contour 20° 37'.457 S 116° 40'.361 Edepth, 4<sub>6</sub>m, enclosed by contour 20° 37'.292 S 116° 40'.667 EDelete depth, 5<sub>6</sub>m 20° 37'.48 S 116° 40'.36 Edepth, 9<sub>3</sub>m 20° 37'.32 S 116° 40'.65 E

**113\* AUSTRALIA - WESTERN AUSTRALIA - Rankin Bank to Dampier - Production wells; platform; pipeline established***Former Notice - 1197(T)/2009 is cancelled*

Woodside Energy Ltd (AA439328 - AA439330, AA439357, AA439358)

**Aus 327 [37/2010]**

Insert	accompanying block	20° 21'.0 S	116° 30'.0 E
	gas pipeline with magenta legend Gas (see Note),		
	between	20° 10'.36 S	116° 01'.78 E
		20° 10'.31 S	115° 59'.70 E
		20° 08'.25 S	115° 55'.07 E
		20° 03'.02 S	115° 31'.52 E
		20° 02'.50 S	115° 29'.00 E

**Aus 328 [1364/2009]**

Insert	gas pipeline, between	20° 09'.94 S	115° 58'.73 E
		20° 08'.25 S	115° 55'.07 E
		20° 04'.60 S	115° 39'.00 E
	accompanying block	19° 49'.5 S	115° 22'.5 E

**Aus 415 [1426/2009]**

Insert	accompanying block	20° 00'.0 S	115° 40'.0 E
--------	--------------------	-------------	--------------

**Aus 416 [1426/2009]**

Insert	accompanying block	20° 00'.0 S	115° 40'.0 E
--------	--------------------	-------------	--------------

**Aus 742 [1226/2009]**

Insert	gas pipeline with magenta legend Gas (see Note),		
	between	20° 18'.51 S	116° 38'.08 E
		20° 17'.18 S	116° 32'.15 E
		20° 12'.57 S	116° 17'.90 E
		20° 10'.31 S	116° 04'.75 E
		20° 10'.24 S	115° 59'.84 E
		20° 08'.17 S	115° 55'.14 E
		20° 04'.00 S	115° 36'.43 E

**Aus 4708 (INT 708) [829/2009]**

Insert	production platform	20° 00'.0 S	115° 22'.0 E
--------	---------------------	-------------	--------------

**AX 0415F [1426/2009]**

Insert	accompanying block	20° 00'.0 S	115° 40'.0 E
--------	--------------------	-------------	--------------

**AX 4708F [829/2009]**

Insert	production platform	20° 00'.0 S	115° 22'.0 E
--------	---------------------	-------------	--------------

Note: New editions of Aus 57, 58 and 59 will be published in due course.

**114\* AUSTRALIA - WESTERN AUSTRALIA - Gage Roads and Cockburn Sound - ZOC diagram**

Australian Hydrographic Service (AA450762)

**Aus 117 [39/2010]**

Amend	legend to A1	32° 15'.03 S	115° 45'.94 E
-------	--------------	--------------	---------------

**AX 70117 [39/2010]**

Amend	legend to A1	32° 15'.03 S	115° 45'.94 E
-------	--------------	--------------	---------------

**115\* AUSTRALIA - WESTERN AUSTRALIA - Fremantle - Jervoise Bay - Infrastructure; obstruction removed**  
Department of Transport WA (AA447782, AA447783)

**Aus 114 [654/2009]**

Insert	continuous line, between	32° 08'.654 S	115° 45'.965 E
		32° 08'.739 S	115° 45'.966 E
		32° 08'.739 S	115° 45'.917 E
		32° 08'.744 S	115° 45'.917 E
		32° 08'.744 S	115° 45'.966 E
		32° 08'.752 S	115° 45'.966 E
Delete	continuous line, between	32° 08'.65 S	115° 45'.97 E
		32° 08'.75 S	115° 45'.97 E

**Aus 117 [114/2010]**

Insert	continuous line, between	32° 08'.707 S	115° 45'.966 E
		32° 08'.752 S	115° 45'.967 E
	continuous line, between	32° 08'.741 S	115° 45'.966 E
		32° 08'.741 S	115° 45'.917 E
Delete	danger circle with legend, Obstrn continuous line, between	32° 08'.65 S	115° 45'.79 E
		32° 08'.71 S	115° 45'.97 E
		32° 08'.75 S	115° 45'.97 E

**AX 70117 [114/2010]**

Insert	continuous line, between	32° 08'.707 S	115° 45'.966 E
		32° 08'.752 S	115° 45'.967 E
	continuous line, between	32° 08'.741 S	115° 45'.966 E
		32° 08'.741 S	115° 45'.917 E
Delete	danger circle with legend, Obstrn continuous line, between	32° 08'.65 S	115° 45'.79 E
		32° 08'.71 S	115° 45'.97 E
		32° 08'.75 S	115° 45'.97 E

**116\* AUSTRALIA - WESTERN AUSTRALIA - Esperance - ZOC diagram**

Australian Hydrographic Service (AA450763)

**Aus 119 [950/2009]**

Amend	legend to A1	34° 13'.7 S	122° 00'.8 E
-------	--------------	-------------	--------------

**117\* AUSTRALIA - SOUTH AUSTRALIA - Douglas Point - Pipeline repositioned**

SA Water Corporation (AA450716, AA450717)

**Aus 778 [43/2010]**

Insert	supply pipeline with magenta legend, <i>Water/Gas (see Note)</i> , between	32° 51'.72 S	137° 47'.89 E
		32° 51'.67 S	137° 55'.00 E
Delete	pipeline with legend, Gas (see Note), between	32° 51'.4 S	137° 48'.3 E
		32° 51'.3 S	137° 54'.8 E

**118\* AUSTRALIA - SOUTH AUSTRALIA - Port Adelaide - Lights established**

Department for Transport, Energy and Infrastructure SA Notice 60/2008 (AA445506), HydroSurvey Australia (AA445507)

**Aus 137 [1365/2009]**

Insert	light, <i>Fl.Y.3s</i>	34° 47'.137 S	138° 30'.766 E
	light, <i>Fl.Y.3s</i>	34° 47'.160 S	138° 30'.764 E

**119\* AUSTRALIA - TASMANIA - Smithton - Light beacon altered; light altered**  
Marine and Safety Tasmania Notice M9/2010 (AA449975, AA450520)

**Aus 178 (plan, Smithton) [1229/2009]**

Amend	light beacon to <i>VQ.Bu</i>	40° 48'.33 S	145° 06'.23 E
	light to <i>Iso.Bu.2s</i>	40° 48'.75 S	145° 06'.08 E

**Aus 790 [952/2009]**

Amend	light to <i>Iso.Bu.2s</i>	40° 48'.75 S	145° 06'.08 E
	light beacon to <i>VQ.Bu</i>	40° 48'.33 S	145° 06'.23 E

**120\* AUSTRALIA - TASMANIA - Black Reef - Light beacon established**  
Marine and Safety Tasmania Notice M8/2010 (AA449976, AA450248 - AA450251, AA450996)

**Aus 790 [119/2010]**

Insert	north cardinal light beacon, Q, with topmark	40° 43'.84 S	145° 03'.85 E
--------	--	--------------	---------------

**121\* AUSTRALIA - VICTORIA - Port Phillip - Williamstown - Depth**  
Victorian Notice 176/2009 (AA446645)

**Aus 154 [1434/2009]**

Substitute	depth, <i>13<sub>4</sub>m</i> , for depth, 8m	37° 51'.70 S	144° 54'.98 E
------------	---	--------------	---------------

**122\* AUSTRALIA - VICTORIA - Port Phillip - River Yarra - Swanson Dock - Light repositioned**  
Victorian Notice 6/2010 (AA449981)

**Aus 154 [121/2010]**

Insert	dashed line, between	37° 49'.016 S	144° 55'.235 E
		37° 49'.062 S	144° 55'.115 E
Move	light	37° 49'.06 S	144° 55'.12 E
	to	37° 49'.016 S	144° 55'.235 E
Amend	legend to <i>064.3°</i>	37° 49'.23 S	144° 54'.68 E

**123(T)/2010 AUSTRALIA - QUEENSLAND - Point Danger to Point Lookout - Scientific instruments***Former Notice* - 1236(T)/2009 is cancelled

Maritime Safety Queensland Notice 44(T)/2010 (AA451166)

Special light buoys, *Fl(5)Y.20s*, exist in positions (WGS84 datum):

28° 10'.84 S 153° 34'.58 E

27° 58'.01 S 153° 26'.52 E

27° 29'.53 S 153° 37'.76 E.

Mariners are not to use these buoys as moorings.

**Chart temporarily affected - Aus 230 - Aus 813 - Aus 814****124(T)/2010 AUSTRALIA - QUEENSLAND - Moreton Bay - Ship to ship transfer***Date* - Until 26 April 2010

Maritime Safety Queensland Notice 59(T)/2010 (AA451723)

Ship to ship transfer of LPG will be conducted at STS1 anchorage (27° 17'.15 S 153° 16'.56 E). An exclusion zone (1850 metres radius) exists around transfer operations.

Brisbane Harbour will promulgate the commencement and completion of the transfer operations on VHF Ch 12.

**Chart temporarily affected - Aus 236 - AU428153****125(T)/2010 AUSTRALIA - QUEENSLAND - Moreton Bay - Pelican Banks - Light beacon destroyed; light buoys established**

Maritime Safety Queensland Notice 46(T)/2010 (AA451535)

The starboard lateral light beacon, *Fl.G.2.5s* (27° 33'.90 S 153° 24'.26 E), has been destroyed; a starboard lateral light buoy, *Fl.G.2.5s* exists in situ.**Chart temporarily affected - Aus 236 - AU428153****126(T)/2010 AUSTRALIA - QUEENSLAND - Brisbane River - Fisherman Islands - Harbour works completed***Former Notice* - 1193(T)/2008 is cancelled

UKHO (AA451236)

Cancel this notice on receipt.

**Chart formerly affected - Aus 237 - AU5237X8****127(T)/2010 AUSTRALIA - QUEENSLAND - Brisbane River - Old Bar Cutting - Light beacon destroyed; light buoy established**

Maritime Safety Queensland Notice 50(T)/2010 (AA451536)

No1 starboard lateral light beacon (27° 20'.08 S 153° 10'.09 E) has been destroyed; a starboard lateral light buoy, *Fl.G.2.5s* exists in situ.**Chart temporarily affected - Aus 236 - Aus 237 - AU428153 - AU5237X8****128(T)/2010 AUSTRALIA - QUEENSLAND - Moreton Bay - Redcliffe - Scientific instrument southeastwards***Former Notice* - 54(T)/2010 is cancelled

Maritime Safety Queensland Notice 44(T)/2010 (AA451166)

A special light buoy, *Fl(5)Y.20s*, exists in position 27° 15'.10 S 153° 11'.94 E (WGS84 datum).

Mariners are not to use the buoy as a mooring.

**Chart temporarily affected - Aus 236 - AU428153**

29 January 2010

**129(T)/2010 AUSTRALIA - QUEENSLAND - Urangan - Scientific instrument**

Date - Until 31 March 2010

Maritime Safety Queensland Notice 48(T)/2010 (AA451507)

A special light buoy, *Fl.Y.3s*, exists in position 25° 17'.80 S 152° 54'.85 E (WGS84 datum).**Chart temporarily affected - Aus 241****130(T)/2010 AUSTRALIA - QUEENSLAND - Gladstone - Depth information**

Former Notice - 57(T)/2010 is cancelled

Maritime Safety Queensland Notice 62(T)/2010 (AA451863)

Available depths as at 24 November 2009:

<i>Metres</i>	<i>Remarks</i>	
Sea Channels:		
* Wild Cattle Cutting	16.0	
Boyne Island Cutting	16.3	
Boyne Island Extension Channel	9.0	
Golding Cutting	16.0	
South Bypass Channel	7.4	
Gatcombe Channel	16.0	
Gatcombe Bypass Channel	13.4	
Inner Channels:		
Auckland Channel	15.8	
Auckland Bypass Channel	6.8	
Clinton Channel	16.0	
Clinton Bypass Channel	10.6	
Clinton Swing Basin	10.9	
Targinie Channel	10.6	
Targinie Swing Basin East	10.9	
Targinie Swing Basin West	8.9	
Berths:		
Boyne Smelter Wharf	15.0	
South Trees East Wharf	13.8	
South Trees West Wharf	13.0	
Barney Point Wharf (east approach)	13.5	
Barney Point Wharf(west approach)	11.5	
Barney Point Wharf	15.0	
Auckland Point No 1 Wharf	11.3	
Auckland Point No 2 Wharf	11.3	
Auckland Point No 3 Wharf	11.4	
Auckland Point No 4 Wharf	11.3	
Clinton No 1 Wharf	19.2	
Clinton No 2 Wharf	18.4	
Clinton No 3 Wharf	18.6	
Clinton No 4 Wharf	19.1	
* Fishermans Landing Wharf No 1	13.6	Berth details to be charted shortly
Fishermans Landing Wharf No 2	13.3	
Fishermans Landing Wharf No 4	11.4	
Fishermans Landing Wharf No 5	11.4	

**Chart temporarily affected - Aus 244 - Aus 245 - Aus 246****131(T)/2010 AUSTRALIA - QUEENSLAND - Port Alma - Oswestry Rock - Light buoy withdrawn**

Maritime Safety Queensland Notice 47(T)/2010 (AA451506)

No12 light buoy (23° 32'.50 S 150° 55'.49 E) has been temporarily withdrawn.

**Chart temporarily affected - Aus 247 - Aus 265 - AU424150**

**132(T)/2010 AUSTRALIA - QUEENSLAND - Lisa Jane Shoals - Scientific instrument***Former Notice* - 1305(T)/2008 is cancelled

Maritime Safety Queensland Notice 44(T)/2010 (AA451166)

A special light buoy, *Fl(5)Y.20s*, exists in position 23° 18'.38 S 151° 04'.51 E.

Mariners are not to use this buoy as a mooring.

**Chart temporarily affected - Aus 247 - Aus 819 - Aus 820 - AU424151****133(T)/2010 AUSTRALIA - QUEENSLAND - Hay Point to Bailey Islet - Scientific instruments***Former Notice* - 60(T)/2010 is cancelled

Maritime Safety Queensland Notice 31(T)/2010, 44(T)/2010 (AA451164, AA451166)

Scientific instruments exist as follows:

<i>Position</i>	<i>Remarks</i>
21° 16'.32 S 149° 18'.70 E	lit buoy, <i>Fl(5)Y.20s</i>
21° 05'.47 S 149° 33'.01 E	unlit buoy.

Mariners are not to use these buoys as moorings.

**Chart temporarily affected - Aus 249 - Aus 250 - Aus 823 - Aus 824 - AX 0249E - AX 0823E - AU422149 - AU5250P2****134(T)/2010 AUSTRALIA - QUEENSLAND - Cape Cleveland - Scientific instrument***Former Notice* - 1198(T)/2008 is cancelled

Maritime Safety Queensland Notice 44(T)/2010 (AA451166)

A special light buoy, *Fl(5)Y.20s*, exists in position 19° 09'.63 S 147° 03'.50 E.

Mariners are not to use this buoy as a mooring.

**Chart temporarily affected - Aus 256 - Aus 827 - AU320147****135(T)/2010 AUSTRALIA - QUEENSLAND - Mourilyan Harbour - Harbour works***Date* - Until 27 August 2010

Maritime Safety Queensland Notice 51(T)/2010 (AA451605)

Harbour works associated with construction of a breakwater, boat ramp and floating walkway are in progress (17° 36'.05 S 146° 07'.50 E).

Mariners are advised to navigate with caution in the area.

**Chart temporarily affected - Aus 258 - AU5258P1****136(T)/2010 AUSTRALIA - QUEENSLAND - Cairns - Trinity Inlet - Harbour works***Date* - Until 30 April 2010

Maritime Safety Queensland Notice 34(T)/2010 (AA451274)

Works associated with wharf fender repairs are in progress at berths No7 (16° 55'.86 S 145° 46'.81 E) and No8 (16° 55'.90 S 145° 46'.80 E).

Mariners are advised to navigate with caution in the area.

**Chart temporarily affected - Aus 263 - AU5262X4**

**137(P)/2010 AUSTRALIA - WESTERN AUSTRALIA - Dampier - Pipeline established**

Former Notice - 1330(P)/2009 is cancelled

Woodside Energy (AA439328 - AA439330, AA439357, AA439358)

A pipeline has been laid between:

<i>Position (WGS84 datum)</i>	<i>Remarks</i>
20° 36'.296 S 116° 45'.475 E	
20° 35'.481 S 116° 44'.727 E	
20° 35'.481 S 116° 44'.727 E	
20° 35'.122 S 116° 44'.671 E	
20° 33'.078 S 116° 45'.640 E	
20° 33'.078 S 116° 45'.640 E	
20° 31'.876 S 116° 45'.735 E	
20° 30'.541 S 116° 46'.337 E	
20° 26'.767 S 116° 46'.547 E	
20° 24'.479 S 116° 45'.944 E	
20° 18'.962 S 116° 40'.113 E	
20° 17'.185 S 116° 32'.153 E	For positions beyond this point see pipeline as charted on Aus 741, 742, 327, 328, 415, 416.

A 0.5M exclusion zone exists on each side of the pipeline from the shore crossing to position 20° 24'.48 S 116° 45'.94 E.

New editions of Aus 57, 58 and 59 will be published on completion of dredging of the new shipping channel mid 2010.

**Chart which will be affected - Aus 57 - Aus 58 - Aus 59****138(T)/2010 AUSTRALIA - WESTERN AUSTRALIA - Regnard Bay - Scientific instrument**

Department of Transport Notice WA 15/2010 (AA451865)

A special light buoy, *Fl(5)Y.20s*, exists in position 20° 49'.32 S 116° 21'.28 E (WGS84 datum).

**Chart temporarily affected - Aus 327 - Aus 742 - AU421116****139(T)/2010 AUSTRALIA - WESTERN AUSTRALIA - Barrow Island - Scientific instruments**

Date - Until 31 January 2012

Department for Transport WA Notice 9A/2010 (AA451302)

Scientific instruments marked by special light buoys, *Fl(5)Y.20s*, exist in the following positions:

20° 47'.8 S 115° 28'.3 E  
 20° 48'.3 S 115° 28'.9 E  
 20° 49'.4 S 115° 30'.6 E.

**Chart temporarily affected - Aus 62 - Aus 742 - Aus 743 - AU421115****140(T)/2010 AUSTRALIA - WESTERN AUSTRALIA - Onslow - Drilling operations**

Date - Until 30 June 2010

Department for Transport WA Notice 10A/2010 (AA451323)

Jack-up barges and support vessels are conducting drilling operations in an area bounded by the following positions:

21° 40'.18 S 114° 59'.15 E  
 21° 40'.16 S 114° 57'.16 E  
 21° 30'.95 S 114° 47'.42 E  
 21° 23'.57 S 114° 46'.56 E  
 21° 20'.63 S 114° 49'.77 E  
 21° 27'.96 S 115° 02'.35 E  
 21° 28'.01 S 115° 07'.22 E  
 21° 32'.99 S 115° 05'.99 E  
 21° 38'.29 S 115° 05'.77 E.

Mariners are advised to navigate with caution in the area and keep 50m clear of the barges.

**Chart temporarily affected - Aus 64 - Aus 743 - Aus 744 - AU422114**

29 January 2010

**141(T)/2010 AUSTRALIA - WESTERN AUSTRALIA - Rottnest Island - Scientific instruments**

*Date* - Until 28 February 2010

Curtin University (AA451639)

Subsurface scientific instruments exist in positions 31° 55'.9 S 115° 19'.5 E and 31° 52'.8 S 115° 18'.6 E.

**Chart temporarily affected - Aus 754 – AX 0754E – AX 66002 - AU432115**

**142(T)/2010 AUSTRALIA - WESTERN AUSTRALIA - Fremantle - Obstruction**

*Date* - Until 31 May 2010

Department for Transport WA Notice 7/2010 (AA451310)

An air curtain exist in the in the entrance to Rous Head Harbour (32° 03'.22 S 115° 43'.69 E).

Mariners are advised to navigate with caution in the area.

**Chart temporarily affected - Aus 112 - Aus 113 - Aus 117 – AX 63112 – AX 70117 - AU5XX113**

**143(T)/2010 AUSTRALIA - TASMANIA - Port Dalrymple - Bell Bay - Light buoy off station**

Marine and Safety Tasmania Notice M15/2010 (AA451833)

The light buoy, Oc. Y.5s (41° 08'.8 S 146° 51'.5 E), has sunk in position.

**Chart temporarily affected - Aus 167 - AU5167X8**

**HYDROGRAPHIC REPORTS**

Nil Reports

**NAVIGATION WARNINGS**

The following radio messages have been received during the period to 29 January 2010. Signal copies of these messages may be destroyed. It is recommended that the reprint of Navigational Warnings should be kept in a file or a book divided into areas. Cancellation should be made on receipt of signals and reprints.

Rigs on location other than those listed in the latest Section III summary are the subject of Radio Navigational Warnings. Rigs in transit will not be the subject of Warnings.

**AUSCOAST WARNING**

- 010 Cancelled.  
 011 Cancelled.  
 012 Cancelled.  
 013 Special purpose vessel *Geo Atlantic* conducting seismic survey in area bounded by 12° 05'·0 S to 12° 51'·0 S and 123° 28'·0 E to 124° 35'·0 E. 6M clearance requested.  
 014 Drill rig *Jack Bates* in position 19° 23'·55 S 114° 19'·59 E. 2.5M clearance requested.  
 015 Cancelled.  
 016 Drill rig *Maersk Discoverer* in position 19° 24'·13 S 114° 15'·14 E. 2.5M clearance requested.  
 017 Cancelled.  
 018 Cancelled.  
 019 Drill rig *Ocean Epoch* in position 21° 30'·16 S 114° 05'·72 E. 2.5M clearance requested.  
 020 Cancelled.  
 021 Special purpose vessel *Geo Celtic* conducting seismic survey in area bounded by 20° 45'·0 S to 21° 30'·0 S and 112° 30'·0 E to 114° 40'·0 E. 6M clearance requested.  
 022 Hammond Hill light K3267.5 (10° 31'·74 S 142° 13'·39 E) unlit.  
 023 Special purpose vessel *Aquila Explorer* conducting seismic survey in area bounded by 38° 44'·0 S to 39° 45'·0 S and 146° 55'·0 E to 148° 30'·0 E. 5M clearance requested.  
 024 Special purpose vessel *Geobay* conducting drilling operations in area bounded by 21° 17'·0 S to 21° 29'·0 S and 114° 42'·0 E to 114° 54'·0 E and a second area bounded by 19° 47'·5 S to 20° 04'·0 S and 115° 11'·5 E to 115° 24'·5 E. 2.5M clearance requested within both areas.  
 025 Limited coast radio stations Cairns and Gladstone (areas A and B) temporarily discontinued from 110300UTC JAN 2010. Navigation warning and sea safety messages will be broadcast by RCC Australia on 8176 kHz. Auscoast Warnings for Auscoast Sea Areas A, B, C (CRS Gladstone) will be broadcast at 2257 UTC and 1157 UTC. Auscoast Warnings for Auscoast Sea Areas H, A, B (CRS Cairns) will be broadcast at 2357 UTC and 1257 UTC.

**NAVAREA X WARNINGS**

- 002 Cancelled.  
 003 Cancelled.  
 004 Special purpose vessel *Beaufort Explorer* conducting seismic survey in area bounded by 10° 20'·6 S to 14° 12'·5 S and 123° 04'·5 E to 128° 00'·0 E. 5M clearance requested.

**Navigational warnings in force as at 290001UTC JAN 10.****Auscoast**

2009 128 246 289 297 304 306 310 311 312 314  
 2010 004 007 008 013 014 016 019 021 022 023 024 025

**Navarea X**

004

**Summary of mobile drilling rigs as at 290001UTC JAN 10.**

<i>Name</i>	<i>Position</i>
Kan Tan IV	39° 47'·34 S 145° 26'·21 E
Ocean Patriot	38° 09'·71 S 148° 12'·97 E
Ocean Shield	11° 05'·90 S 127° 03'·70 E
Transocean Legend	13° 40'·07 S 122° 16'·32 E
Jack Bates	19° 23'·55 S 114° 19'·59 E
Maersk Discoverer	19° 24'·13 S 114° 15'·14 E
EnSCO 7500	19° 33'·00 S 114° 07'·80 E
Atwood Eagle	19° 50'·76 S 115° 19'·70 E
Stena Clyde	20° 05'·30 S 115° 09'·70 E
Nan Hai 6	21° 26'·23 S 114° 02'·48 E
Ocean Epoch	21° 30'·16 S 114° 05'·72 E

III

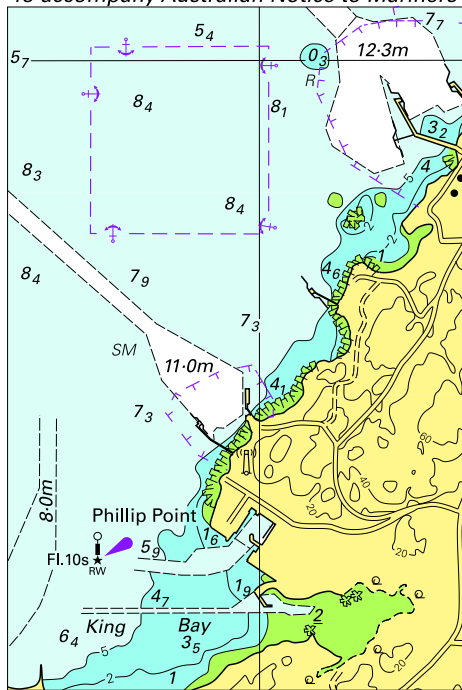
**NAVAREA XIV WARNINGS**

Nil.

**Navarea XIV warnings in force as at 290001UTC JAN 10.**

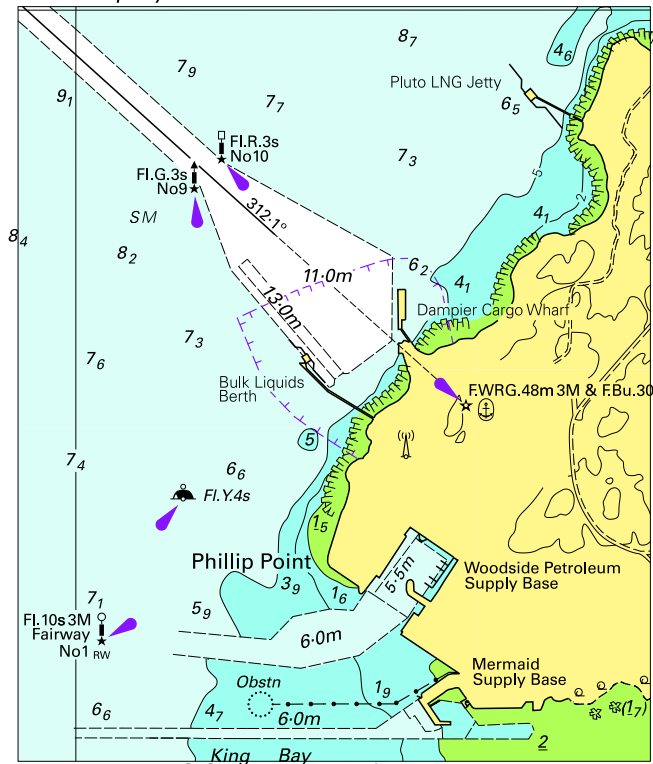
**2009 059**  
**2010 003**

To accompany Australian Notice to Mariners 111/2010



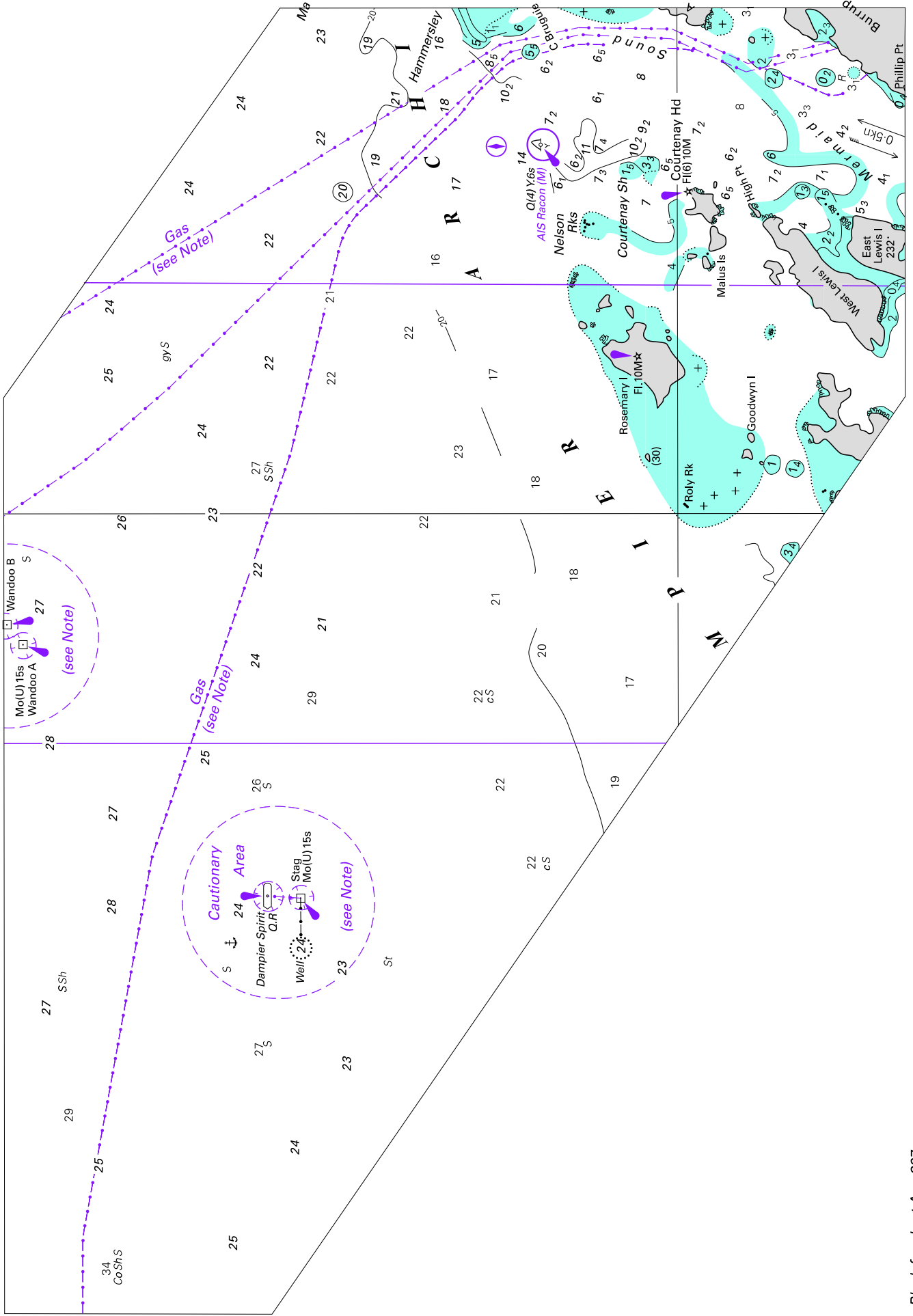
© Commonwealth of Australia 2010  
Block for chart Aus 57 (60.6 x 90.4mm)

To accompany Australian Notice to Mariners 111/2010



© Commonwealth of Australia 2010 (83.6 x 99.8mm)  
Block for chart Aus 58

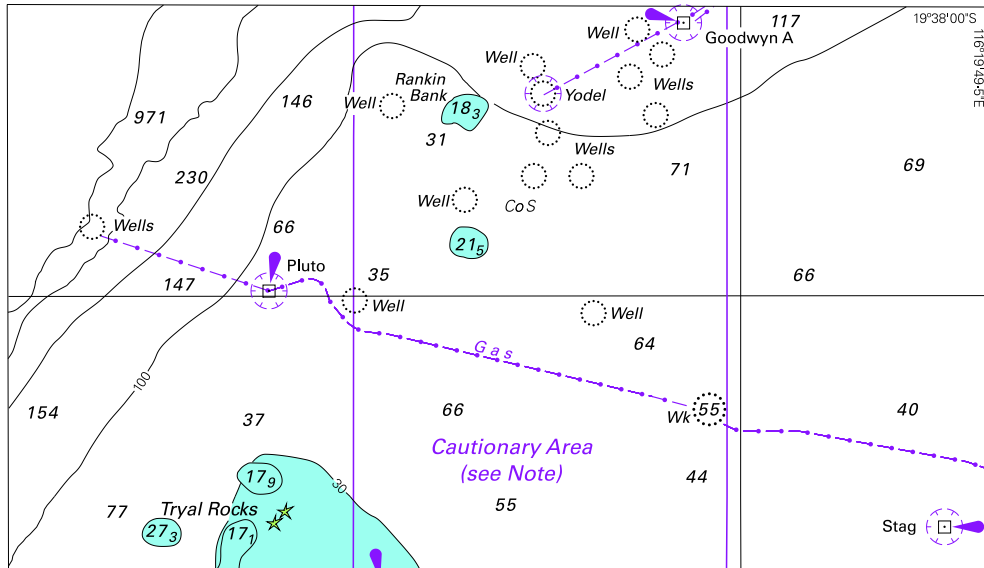
To accompany Australian Notice to Mariners 113/2010







To accompany Australian Notice to Mariners 113/2010



Block for chart Aus 416

© Commonwealth of Australia 2010

(74-9 x 129-9mm)