



3 December 2010

Edition 24

Australian Notices to Mariners are the authority for correcting Australian Charts and Publications

AUSTRALIAN NOTICES TO MARINERS

Notices 1292 – 1354 



*The Hydrographer and Staff of the Australian Hydrographic Service
wish all users of Australian Navigational Products a Merry Christmas,
a Happy New Year and safe, successful voyages in 2011.*



Published fortnightly by the Australian Hydrographic Service

Commodore R. NAIRN RAN
Hydrographer of Australia

SECTIONS.

- I. **Australian Notices to Mariners, including blocks and notes.**
- II. **Hydrographic Reports.**
- III. **Navigational Warnings.**

SUPPLEMENTS.

- I. **Tracings**
- II. **Cumulative List of Australian Notices to Mariners.**
- III. **Temporary and Preliminary Notices in force.**
- IV. **Amendments to Admiralty List of Lights and Fog Signals (Vol K),
Radio Signals (NP 281(2), 282, 283(2), 285, 286(4)) and Sailing
Directions (NP 9, 13, 14, 15, 33, 34, 35, 36, 39, 44, 51, 60, 61, 62, 100, 136).**

© Commonwealth of Australia 2010

This work is copyright. Apart from any use permitted under the Copyright Act 1968, no part may be reproduced by any process, adapted, communicated or commercially exploited without prior written permission from The Commonwealth represented by the Australian Hydrographic Service.

IMPORTANT NOTICE

This edition of Notices to Mariners includes all significant information affecting AHS products which the AHS has become aware of since the last edition. All reasonable efforts have been made to ensure the accuracy and completeness of the information, including third party information, on which these updates are based. The AHS regards third parties from which it receives information as reliable, however the AHS cannot verify all such information and errors may therefore exist. The AHS does not accept liability for errors in third party information.

GENERAL INSTRUCTIONS

The substance of these notices should be inserted on the charts affected.

Bearings are referred to the true compass and are reckoned clockwise from North; those relating to lights are given as seen by an observer from seaward. Positions quoted in permanent notices relate to the horizontal datum for the chart(s). When preliminary or temporary notices affect multiple charts, positions will be provided in relation to only one horizontal datum and that datum will be specified. When the multiple charts do not have a common horizontal datum, mariners will be required to adjust the position(s) for those charts not on the specified datum. The range quoted for a light is its nominal range. Depths are with reference to the chart datum of each chart. Heights are above mean high water springs or mean higher high water, as appropriate.

The capital letter (P) or (T) after the number of any notice denotes a preliminary or temporary notice respectively, which are contained separately at the end of the permanent notices. A star (*) adjacent to the number of a notice indicates that the notice is based on original information.

REPORTING OF DANGERS

Mariners are particularly requested to notify the AUSTRALIAN HYDROGRAPHIC SERVICE, Locked Bag 8801 Wollongong, NSW 2500 (Fax 02-4223 6599, e-mail Hydro.NTM@defence.gov.au or, alternatively by filling in and submitting the [Hydrographic Notes](#) forms located on the web site – www.hydro.gov.au), immediately on the discovery of new dangers or suspected dangers to navigation. For changes or defects in aids to navigation notify AusSAR (Fax 02-6230 6868 or email rccaus@amsa.gov.au).

AUTHORISED USE

Copies of Australian notices are available free of charge from the Australian Hydrographic Service (AHS) website (www.hydro.gov.au) and through the eNotices (email) service (www.hydro.gov.au/enotices/enotices.htm).

Individual Notices may be copied for the purpose of inserting Notice substance on official charts and publications. Paper copies may be printed by chart agents and distributed to customers on a cost recovery basis. Participating chart agents are listed on the AHS website as providing a 'Paper Notices to Mariners' service (www.hydro.gov.au/prodserv/distributors/distributors.htm). Copies of the notices may not be sold for profit without prior written agreement.

NUMERICAL INDEX OF NOTICES TO MARINERS

Edition No 24

Notices	Aus Chart, INT Chart, ENC Cell, AHP
1292.....	Aus 134, 235, 236, 327, 671, 676, 4728, AU250140, 250150, 414135, 414136, 415135, 415136, 4TS001, 4TS003, 4TS004, 4TS02A, 4TS02B
1293.....	Amendment to Australian Notice to Mariners No 2
1294.....	Aus 192
1295.....	Aus 193, 807, 808, AX 0808E, 60193, 70193
1296.....	Aus 200
1297.....	Aus 219
1298.....	Aus 235, 365, 424
1299.....	Aus 379
1300.....	Aus 398, 539, 545
1301.....	Aus 388, 389, 391, 462, 4622, INT 622
1302.....	Aus 4, 301, 701
1303.....	Aus 721
1304.....	Aus 442, 720, 721, 4721, INT 721, AX 4721F
1305.....	Aus 720, 722, AX 72722
1306.....	Aus 314, 4060, 4603, 4721, 4722, INT 60, 603, 721, 722, AX 0314F, 4603F, 4721F, 4722F
1307.....	Aus 55
1308.....	Aus 58, 59
1309.....	Aus 741
1310.....	Aus 329, 745
1311.....	Aus 171, 174
1312.....	Aus 487, 4644
1313.....	Aus 144
1314.....	Aus 143, 158, 788
1315.....	Aus 154, 155
1316.....	Aus 487, 4644
1317(T).....	Aus 194, 195, AU5XX194
1318(T).....	Aus 197, 204, 215, 424, 489, 809, 4643, AX 0809E, 67215
1319(T).....	Aus 489, 809, 810, AX 0809E, AU240150, 333153, 334153, 433152
1320(T).....	Aus 235, 236, 237, 238
1321(T).....	Aus 236
1322(T).....	Aus 236, AU428153
1323(T).....	Aus 236, AU5237X8
1324(T).....	Aus 236, 237, AU5237X8
1325(T).....	Aus 238, AU5237X8
1326(T).....	Aus 238, AU5237X8
1327(T).....	Aus 248, 260, 261, 367, 820, 822, AX 0260E, 0367E, 0820E, 0822E, 60260, 67248, 67261, 423150, 5261P1, 5261P2, 5XX248
1328(T).....	Aus 249, 250, AX 0249E, AU422149, 5250P2
1329(T).....	Aus 249, 250
1330(T).....	Aus 250
1331(T).....	Aus 258
1332(T).....	Aus 258, AU5258P1
1333(T).....	Aus 376, 377, 840, AX 60377
1334(T).....	Aus 4603, 4721, 4722, INT 603, 721, 722, AX 4603F, 4721F, 4722F, AU130090, 130120, 220120
1335(T).....	Aus 325, 326, 739
1336(T).....	Aus 63, 64, 328, 742, 744, AU320114, 320115, 321114, 421115, 422114, 422115, 5X64P1
1337(T).....	Aus 328, 329, 744, AU422114
1338(T).....	Aus 329, 745, AU323113
1339(T).....	Aus 334, 754, AX 0334E, 0754E, 66002, AU432115
1340(T).....	Aus 113
1341(T).....	Aus 113, AU5XX113
1342(T).....	Aus 112, 113, 117, AX 63112, 70117, AU5XX113
1343(P).....	Aus 444, 777, AU435137
1344(T).....	Aus 347
1345(T).....	Aus 143, AU439144
1346(T).....	Aus 143, 158, AU439144, 5XX144
1347(T).....	Aus 143, 153, 157, AU439144, 5XX153
1348(P).....	Aus 155, 438144
1349(T).....	Aus 143, 155, AU438144
1350(T).....	Aus 143, 158, AU5143P3
1351(T).....	Aus 158
1352(T).....	Aus 158
1353(T).....	Aus 150, 151, AU439145
1354(T).....	Aus 181, 802

NUMERICAL INDEX OF CHARTS AFFECTED

Edition No 24

Aus Chart	Notices	Aus Chart	Notices
Aus 4.....	1302	Aus 389	1301
Aus 55.....	1307	Aus 391	1301
Aus 58.....	1308	Aus 398	1300
Aus 59.....	1308	Aus 424	1298, 1318(T)
Aus 63.....	1336(T)	Aus 442	1304
Aus 64.....	1336(T)	Aus 444	1343(P)
Aus 112.....	1342(T)	Aus 462	1301
Aus 113.....	1340(T), 1341(T), 1342(T)	Aus 487	1312, 1316
Aus 117.....	1342(T)	Aus 489	1318(T), 1319(T)
Aus 134.....	1292	Aus 539	1300
Aus 143.....	1314, 1345(T), 1346(T), 1347(T), 1349(T), 1350(T)	Aus 545	1300
Aus 144.....	1313	Aus 671	1292
Aus 150.....	1353(T)	Aus 676	1292
Aus 151.....	1353(T)	Aus 701	1302
Aus 153.....	1347(T)	Aus 720	1304, 1305
Aus 154.....	1315	Aus 721	1303, 1304
Aus 155.....	1315, 1348(P), 1349(T)	Aus 722	1305
Aus 157.....	1347(T)	Aus 739	1335(T)
Aus 158.....	1314, 1346(T), 1350(T), 1351(T), 1352(T)	Aus 741	1309
Aus 171.....	1311	Aus 742	1336(T)
Aus 174.....	1311	Aus 744	1336(T), 1337(T)
Aus 181.....	1354(T)	Aus 745	1310, 1338(T)
Aus 192.....	1294	Aus 754	1339(T)
Aus 193.....	1295	Aus 777	1343(P)
Aus 194.....	1317(T)	Aus 788	1314
Aus 195.....	1317(T)	Aus 802	1354(T)
Aus 197.....	1318(T)	Aus 807	1295
Aus 200.....	1296	Aus 808	1295
Aus 204.....	1318(T)	Aus 809	1318(T), 1319(T)
Aus 215.....	1318(T)	Aus 810	1319(T)
Aus 219.....	1297	Aus 820	1327(T)
Aus 235.....	1292, 1298, 1320(T)	Aus 822	1327(T)
Aus 236.....	1292, 1320(T), 1321(T), 1322(T), 1323(T), 1324(T)	Aus 840	1333(T)
Aus 237.....	1320(T), 1324(T)	Aus 4060	1306
Aus 238.....	1320(T), 1325(T), 1326(T)	Aus 4603	1306, 1334(T)
Aus 248.....	1327(T)	Aus 4622	1301
Aus 249.....	1328(T), 1329(T)	Aus 4643	1318(T)
Aus 250.....	1328(T), 1329(T), 1330(T)	Aus 4644	1312, 1316
Aus 258.....	1331(T), 1332(T)	Aus 4721	1304, 1306, 1334(T)
Aus 260.....	1327(T)	Aus 4722	1306, 1334(T)
Aus 261.....	1327(T)	Aus 4728	1292
Aus 301.....	1302	AX 0249E	1328(T)
Aus 314.....	1306	AX 0260E	1327(T)
Aus 325.....	1335(T)	AX 0314F	1306
Aus 326.....	1335(T)	AX 0334E	1339(T)
Aus 327.....	1292	AX 0367E	1327(T)
Aus 328.....	1336(T), 1337(T)	AX 0754E	1339(T)
Aus 329.....	1310, 1337(T), 1338(T)	AX 0808E	1295
Aus 334.....	1339(T)	AX 0809E	1318(T), 1319(T)
Aus 347.....	1344(T)	AX 0820E	1327(T)
Aus 365.....	1298	AX 0822E	1327(T)
Aus 367.....	1327(T)	AX 4603F.....	1306, 1334(T)
Aus 376.....	1333(T)	AX 4721F.....	1304, 1306, 1334(T)
Aus 377.....	1333(T)	AX 4722F.....	1306, 1334(T)
Aus 379.....	1299	AX 60193.....	1295
Aus 388.....	1301	AX 60260.....	1327(T)
		AX 60377.....	1333(T)
		AX 63112.....	1342(T)
		AX 66002.....	1339(T)

Aus Chart	Notices	ENC Cell	Notices
AX 67215	1318(T)	AU130090.....	1334(T)
AX 67248	1327(T)	AU130120.....	1334(T)
AX 67261	1327(T)	AU220120.....	1334(T)
AX 70117	1342(T)	AU240150.....	1319(T)
AX 70193	1295	AU250140.....	1292
AX 72722	1305	AU250150.....	1292
		AU320114.....	1336(T)
		AU320115.....	1336(T)
		AU321114.....	1336(T)
		AU323113.....	1338(T)
		AU333153.....	1319(T)
		AU334153.....	1319(T)
		AU414135.....	1292
		AU414136.....	1292
		AU415135.....	1292
		AU415136.....	1292
		AU421115.....	1336(T)
		AU422114.....	1336(T), 1337(T)
		AU422115.....	1336(T)
		AU422149.....	1328(T)
		AU423150.....	1327(T)
		AU428153.....	1322(T)
		AU432115.....	1339(T)
		AU433152.....	1319(T)
		AU435137.....	1343(P)
		AU438144.....	1348(P), 1349(T)
		AU439144.....	1345(T), 1346(T), 1347(T)
		AU439145.....	1353(T)
		AU4TS001	1292
		AU4TS003	1292
		AU4TS004	1292
		AU4TS02A.....	1292
		AU4TS02B.....	1292
		AU5143P3	1350(T)
		AU5237X8	1323(T), 1324(T), 1325(T), 1326(T)
		AU5250P2	1328(T)
		AU5258P1	1332(T)
		AU5261P1	1327(T)
		AU5261P2	1327(T)
		AU5X64P1	1336(T)
		AU5XX113	1341(T), 1342(T)
		AU5XX144.....	1346(T)
		AU5XX153.....	1347(T)
		AU5XX194	1317(T)
		AU5XX248.....	1327(T)
INT Chart	Notices		
INT 60	1306		
INT 603	1306, 1334(T)		
INT 622	1301		
INT 721	1304, 1306, 1334(T)		
INT 722	1306, 1334(T)		

1292 AUSTRALIA - Product

Australian Hydrographic Service (AA506138)

New Chart

<i>Chart</i>	<i>Published</i>	<i>Title and description of amendments</i>	<i>Scale</i>	<i>Index Chart</i>	<i>Price</i>
Aus 327	3/12/2010	Australia - North West Coast - Western Australia - Port Walcott to Montebello Islands 18° 18'.0 S - 21° 30'.0 S 115° 21'.0 E - 117° 19'.5 E <i>New chart updated for maritime boundaries; limits have been moved west to include Pluto platform.</i>	1:300 000	Aus 5001	\$35.00

New Electronic Navigation Chart (Seafarer ENC)

<i>Cell Name</i>	<i>Released</i>	<i>Title</i>
AU250140	December 2010	Southern Ocean - Tasmania to South Tasman Rise
AU250150	December 2010	Tasman Sea - East Tasman Plateau
AU414135	December 2010	Northern Territory - Blue Mud Bay
AU414136	December 2010	Northern Territory - Groote Eylandt to Cape Grey
AU415135	December 2010	Northern Territory - Limmen Bight
AU415136	December 2010	Gulf of Carpentaria - Groote Eylandt South
AU4TS001	December 2010	Torres Strait - White Rocks
AU4TS003	December 2010	Torres Strait - Prince of Wales Channel to Twin Island
AU4TS004	December 2010	Torres Strait - Herald Patches to Reeves Shoal
AU4TS02A	December 2010	Torres Strait - Larpet Banks
AU4TS02B	December 2010	Torres Strait - Prince of Wales Channel

New Chart to be published shortly

<i>Chart</i>	<i>Title</i>	<i>Scale</i>	<i>Expected Publication Date</i>
Aus 671	Papua New Guinea - New Britain - South Coast - Plans in Papua New Guinea (Sheet 6) Plans: Henry Reid Bay	1:37 500	17 December 2010
Aus 4728	Jacquinet Bay Southern Ocean - Spencer Gulf to Tasmania	1:37 500 1:1 500 000	17 December 2010

New Edition to be published shortly

<i>Chart</i>	<i>Title</i>	<i>Scale</i>	<i>Expected Publication Date</i>
Aus 134	Australia - South Coast - South Australia - Port Lincoln and approaches Plans: Port Lincoln Wharves Proper Bay	1:50 000 1:7 500 1:10 000	17 December 2010
Aus 235	Australia - North West Coast - Western Australia - Port of Dampier Plan: Mooloolaba Harbour	1:75 000 1:10 000	17 December 2010
Aus 236	Australia - East Coast - Queensland - Moreton Bay Plan: Manly Boat Harbour	1:75 000 1:20 000	17 December 2010

Chart permanently withdrawn

<i>Chart</i>	<i>On publication of new chart</i>
Aus 327	Aus 327

Chart to be permanently withdrawn without replacement

<i>Chart</i>	<i>On publication of new chart</i>
Aus 676	Aus 671

For further details refer to the AHS website at www.hydro.gov.au for new edition and new chart stock arrival information.

When placing orders with a chart agent, mariners should advise whether their order pertains to the current edition or the new edition.

1293 AUSTRALIA - Product - Amendment to Australian Notice to Mariners No 2
 Australian Hydrographic Service (AA504272)

Page 11

Delete entry for Barra Pro Queensland

1294* AUSTRALIA - NEW SOUTH WALES - Twofold Bay - Eden - Snug Cove - Mooring buoy
 NSW Maritime Notice SC1012/2010 (AA504174)

Aus 192 [470/2010]
 Delete mooring buoy 37° 04'.47 S 149° 54'.09 E

Aus 192 (plan, Eden)
 Move mooring buoy 37° 04'.48 S 149° 54'.09 E
 to 37° 04'.383 S 149° 54'.160 E

1295* AUSTRALIA - NEW SOUTH WALES - Beecroft Peninsula - Crocodile Head - Light buoy removed
 Former Notice - 1035(T)/2008 is cancelled
 University of New South Wales (AA504662)

Aus 193 [98/2010]
 Delete light buoy 35° 05'.0 S 150° 51'.0 E

Aus 807 [581/2010]
 Delete light buoy 35° 05'.0 S 150° 51'.0 E

Aus 808 [986/2010]
 Delete light buoy 35° 05'.0 S 150° 51'.0 E

AX 0808E [986/2010]
 Delete light buoy 35° 05'.0 S 150° 51'.0 E

AX 60193 [1217/2008]
 Delete light buoy 35° 05'.0 S 150° 51'.0 E

AX 70193 [98/2010]
 Delete light buoy 35° 05'.0 S 150° 51'.0 E

1296* AUSTRALIA - NEW SOUTH WALES - Port Jackson - Glebe Island - Lights
 UKHO (AA502551)

Aus 200 [NE 10/9/2010]
 Insert accompanying block 33° 52'.1 S 151° 10'.7 E

1297* AUSTRALIA - NEW SOUTH WALES - Tuncurry - Beacon removed
 Australian Hydrographic Service (AA483372, AA504326)

Aus 219 (plan, Cape Hawke Harbour) [1043/2010]
 Delete beacon 32° 10'.90 S 152° 30'.05 E

1298* AUSTRALIA - QUEENSLAND - Gneering Shoals - Depths
Port of Brisbane Corporation (DHDB 1616271)

Aus 235 [1159/2010]

Insert	depth, 5 ₆ m	26° 38'.68 S	153° 09'.64 E
	depth, 9 ₉ m, enclosed by contour	26° 39'.04 S	153° 09'.83 E
	depth, 12 ₇ m, and extend contour NW to enclose	26° 39'.10 S	153° 12'.47 E
	depth, 12 ₇ m, enclosed by contour	26° 38'.79 S	153° 10'.53 E

Delete	depth, 6 ₇ m	26° 38'.8 S	153° 09'.6 E
	depth, 14 ₆ m	26° 39'.2 S	153° 09'.8 E
	depth, 13 ₇ m	26° 39'.2 S	153° 12'.6 E

Aus 365 [1160/2010]

Substitute	depth, 3 _{fm} , for depth, 4 ₁ fm	26° 38'.9 S	153° 09'.5 E
------------	---	-------------	--------------

Aus 424 [1105/2010]

Substitute	depth, 3 _{fm} , for depth, 4 ₁ fm	26° 38'.9 S	153° 09'.5 E
------------	---	-------------	--------------

1299* PAPUA NEW GUINEA - Caution Bay to Redscar Bay - Depths
HMAS *Mermaid* (AA504279, AA504280)

Aus 379 [1228/2010]

Insert	depth, 7 ₁ m, enclosed by contour	9° 19'.47 S	146° 47'.84 E
	depth, 10 ₄ m, enclosed by contour	9° 09'.55 S	146° 35'.52 E

1300* PAPUA NEW GUINEA - Tulun Islands to Cape Lambert - ZOC diagrams
Australian Hydrographic Service (AA318722)

Aus 398 [1163/2010]

Substitute	accompanying ZOC diagram	3° 45'.0 S	155° 21'.0 E
------------	--------------------------	------------	--------------

Aus 539 [1163/2010]

Substitute	accompanying ZOC diagram	3° 30'.0 S	152° 05'.0 E
------------	--------------------------	------------	--------------

Aus 545 [1163/2010]

Substitute	accompanying ZOC diagram	4° 19'.0 S	151° 37'.0 E
------------	--------------------------	------------	--------------

1301* PAPUA NEW GUINEA - Manus Island to Wuvulu Island - Chart limits; legends

Australian Hydrographic Service (AA503326)

Aus 388 [589/2010]Insert legend, *Adjoining Chart Aus 390*, in N border 3° 04'.7 S 144° 45'.0 E**Aus 389 [951/2010]**Insert legend, *Adjoining Chart Aus 390*, in E border 2° 30'.0 S 144° 02'.7 E**Aus 391 [1306/2009]**Insert legend, *Adjoining Chart Aus 390*, in W border 2° 30'.0 S 145° 42'.6 E**Aus 462 [32/2010]**

Insert magenta limits, with legend *Aus 390* in NE corner,
between

3° 19'.0 S	142° 40'.0 E
3° 19'.0 S	146° 41'.5 E
0° 20'.0 S	146° 41'.5 E
0° 20'.0 S	142° 40'.0 E

Aus 4622 (INT 622) [754/2010]

Insert magenta limits, with legend *Aus 390* in NW corner,
between

0° 20'.0 S	142° 00'.0 E
3° 19'.0 S	142° 00'.0 E
3° 19'.0 S	146° 41'.5 E
0° 20'.0 S	146° 41'.5 E
0° 20'.0 S	142° 00'.0 E

1302* AUSTRALIA - QUEENSLAND - Weipa - Pilot boarding place

Maritime Safety Queensland Notices 227/2010, 989/2010 (AA460546, AA504208)

Aus 4 [952/2010]Insert pilot boarding place, with magenta legend, *Shallow Draught*, centred on 12° 40'.45 S 141° 43'.33 E**Aus 301 [1230/2010]**Move pilot boarding place, centred on 12° 43'.0 S 141° 40'.0 E
to 12° 43'.9 S 141° 36'.0 E**Aus 701 [NE 13/2/2009]**Insert pilot boarding place, with magenta legend, *Shallow Draught*, centred on 12° 40'.45 S 141° 43'.33 E**1303* AUSTRALIA - NORTHERN TERRITORY - Kennedy Bay - Rock**

UKHO (AA502609)

Aus 721 [1232/2010]

Insert rock awash, enclosed by danger circle 11° 12'.54 S 132° 05'.30 E

Delete depth, 3₃m 11° 12'.4 S 132° 05'.1 E

1304* AUSTRALIA - NORTHERN TERRITORY - Cape Don - Light altered

Australian Maritime Safety Authority (AA504846 - AA504848)

Aus 442 [1232/2010]

Amend range to 20M

11° 18'.5 S

131° 45'.9 E

Aus 720 [1232/2010]

Amend range to 20M

11° 18'.5 S

131° 45'.9 E

Aus 721 [1303/2010]

Amend range to 20M

11° 18'.5 S

131° 45'.9 E

Aus 4721 (INT 721) [1235/2010]

Amend range to 20M

11° 18'.5 S

131° 45'.9 E

AX 4721F [1235/2010]

Amend range to 20M

11° 18'.5 S

131° 45'.9 E

1305* AUSTRALIA - NORTHERN TERRITORY - Clarence Strait - Depth, structure colour

UKHO (AA502610)

Aus 720 [1304/2010]

Insert structure color, R

12° 04'.25 S

131° 10'.68 E

Aus 722 [1235/2010]

Insert structure color, R

12° 04'.25 S

131° 10'.68 E

Substitute depth, 29m, for depth, 45m

12° 08'.0 S

131° 02'.0 E

AX 72722 [1235/2010]

Insert structure color, R

12° 04'.25 S

131° 10'.68 E

Substitute depth, 29m, for depth, 45m

12° 08'.0 S

131° 02'.0 E

1306* AUSTRALIA - WESTERN AUSTRALIA - Sahul Banks - Oil field
PTTEP Australasia Pty Ltd (AA503144, AA503146)

Aus 314 [416/2010]			
Insert	accompanying block	11° 55'.0 S	125° 00'.0 E
Aus 4060 (INT 60) [1122/2010]			
Insert	accompanying block	11° 30'.0 S	127° 00'.0 E
Aus 4603 (INT 603) [592/2010]			
Insert	accompanying block	11° 00'.0 S	125° 10'.0 E
Aus 4721 (INT 721) [1304/2010]			
Insert	accompanying block	12° 00'.0 S	125° 00'.0 E
Aus 4722 (INT 722) [995/2010]			
Insert	accompanying block	12° 00'.0 S	125° 20'.0 E
AX 0314F [416/2010]			
Insert	accompanying block	11° 55'.0 S	125° 00'.0 E
AX 4603F [592/2010]			
Insert	accompanying block	11° 00'.0 S	125° 10'.0 E
AX 4721F [1304/2010]			
Insert	accompanying block	12° 00'.0 S	125° 00'.0 E
AX 4722F [995/2010]			
Insert	accompanying block	12° 00'.0 S	125° 20'.0 E

1307* AUSTRALIA - WESTERN AUSTRALIA - Port Walcott - Legend
Australian Hydrographic Service (AA503326)

Aus 55 [36/2010]			
Insert	magenta legend, <i>Adjoining Chart Aus 57</i> , in W border	20° 30'.5 S	117° 00'.1 E

1308* AUSTRALIA - WESTERN AUSTRALIA - Dampier - Nav aids

Former Notice - 937(T)/2010 is cancelled

Dampier Port Authority (AA503110, AA503111, AA504996)

Aus 58 [NE 19/11/2010]

Insert	light, <i>Iso.R.6s</i>	20° 39'.133 S	116° 39'.576 E
Amend	light to <i>Iso.R.6s</i>	20° 39'.05 S	116° 39'.76 E
Delete	light	20° 39'.14 S	116° 39'.56 E

Aus 59 (plan, Dampier Wharves) [1169/2010]

Insert	light, <i>Iso.R.6s 7M</i>	20° 39'.213 S	116° 39'.497 E
Move	mooring buoy to mooring buoy to	20° 38'.22 S 20° 38'.267 S 20° 38'.40 S 20° 38'.391 S	116° 43'.72 E 116° 43'.710 E 116° 43'.62 E 116° 43'.635 E
Amend	light to <i>Iso.R.6s 7M</i>	20° 39'.14 S	116° 39'.69 E
Delete	light	20° 39'.22 S	116° 39'.47 E

Aus 59 (plan, Withnell Bay to King Bay)

Move	mooring buoy to mooring buoy to	20° 38'.22 S 20° 38'.267 S 20° 38'.41 S 20° 38'.391 S	116° 43'.72 E 116° 43'.710 E 116° 43'.63 E 116° 43'.635 E
------	--	--	--

1309* AUSTRALIA - WESTERN AUSTRALIA - Dampier Archipelago - Oil field northwards

Santos (AA121753, AA133144)

Aus 741 [1058/2010]

Insert	accompanying block	19° 17'.0 S	116° 36'.0 E
--------	--------------------	-------------	--------------

1310* AUSTRALIA - WESTERN AUSTRALIA - Tantabiddi - Scientific instruments

Australian Institute of Marine Science (AA503384)

Aus 329 [1236/2010]

Insert	depth, <i>10m</i> , enclosed by danger circle with legend, <i>ODAS</i>	21° 50'.98 S	113° 54'.40 E
--------	---	--------------	---------------

Aus 745 [1170/2010]

Insert	depth, <i>10m</i> , enclosed by danger circle with legend, <i>ODAS</i>	21° 50'.98 S	113° 54'.40 E
	depth, <i>10m</i> , enclosed by danger circle with legend, <i>ODAS</i>	21° 51'.99 S	113° 56'.82 E

1311* AUSTRALIA - TASMANIA - North West Bay to South Arm - Lights

Former Notice - 724(T)/2010 is cancelled

Marine and Safety Tasmania Notice M112/2010, M113/2010 (AA502689, AA503450)

Aus 171 [956/2010]

Insert	light, <i>Fl.Bu.5s</i>	43° 02'.34 S	147° 16'.53 E
	light, <i>Fl.Bu.5s</i>	43° 01'.67 S	147° 24'.78 E

Aus 174 (plan, North West Bay) [749/2010]

Amend	light to <i>Fl.Bu.5s</i>	43° 02'.34 S	147° 16'.53 E
-------	--------------------------	--------------	---------------

1312* AUSTRALIA - TASMANIA - Flinders Island - Depth northeastwards

Australian Hydrographic Service (AA502747)

Aus 487 [1120/2010]

Delete	depth, 211m, and enclosing contour	39° 12'.5 S	148° 46'.5 E
--------	------------------------------------	-------------	--------------

Aus 4644 [NC 24/9/2010]

Delete	depth, 211m	39° 12'.5 S	148° 46'.5 E
--------	-------------	-------------	--------------

1313* AUSTRALIA - VICTORIA - Port Phillip - Queenscliff - Shortland Bluff - Light

UKHO (AA502224)

Aus 144 [800/2010]

Amend	light to <i>Dir Iso.WR.2s 19m 12/10M & Dir F.WR.6/4M Fort West Bn</i>	38° 16'.40 S	144° 39'.53 E
-------	---	--------------	---------------

1314* AUSTRALIA - VICTORIA - Port Phillip - Queenscliff - Shortland Bluff - Depths

Port of Melbourne Corporation, UKHO (AA502224)

Aus 143 [1178/2010]

Delete	depth, 9 ₅ m, and enclosing contour	38° 16'.5 S	144° 41'.3 E
--------	--	-------------	--------------

Aus 158 [1064/2010]

Delete	depth, 9 ₅ m, and enclosing contour	38° 16'.50 S	144° 41'.25 E
	depth, 3 ₃ m, and enclosing contour	38° 16'.60 S	144° 39'.38 E

Aus 788 [1178/2010]

Delete	10m contour, centred on	38° 16'.5 S	144° 41'.3 E
--------	-------------------------	-------------	--------------

1315* AUSTRALIA - VICTORIA - Port Phillip - Hobsons Bay - Station Pier to St Kilda - Beacons

Former Notices - 1036(T)/2010, 1152(P)/2010 are cancelled

Victorian Notice 116/2010 (AA502887)

Aus 154 [845/2010]

Insert	special beacon, with topmark	37° 50'.485 S	144° 55'.400 E
	special beacon, with topmark	37° 50'.710 S	144° 56'.184 E
Move	beacon	37° 50'.49 S	144° 55'.00 E
	to	37° 50'.543 S	144° 55'.024 E
	beacon	37° 50'.46 S	144° 55'.09 E
	to	37° 50'.496 S	144° 55'.133 E
	beacon	37° 50'.87 S	144° 56'.68 E
	to	37° 50'.915 S	144° 56'.595 E
Delete	beacon	37° 50'.92 S	144° 56'.80 E
	to	37° 51'.040 S	144° 56'.891 E
	beacon	37° 50'.46 S	144° 55'.13 E
	beacon	37° 50'.44 S	144° 55'.24 E
	beacon	37° 50'.45 S	144° 55'.40 E
	beacon	37° 50'.84 S	144° 56'.50 E

Aus 155 [1180/2010]

Insert	isolated danger beacon, with topmark	37° 51'.313 S	144° 57'.350 E
	special beacon, with topmark	37° 51'.465 S	144° 57'.781 E
	special beacon, with topmark	37° 51'.040 S	144° 56'.891 E
Substitute	special beacon, with topmark for buoy	37° 51'.16 S	144° 57'.17 E
Move	beacon	37° 51'.32 S	144° 57'.62 E
	to	37° 51'.366 S	144° 57'.591 E
	beacon	37° 51'.98 S	144° 58'.20 E
	to	37° 52'.035 S	144° 58'.219 E
	beacon	37° 52'.16 S	144° 58'.38 E
	to	37° 52'.142 S	144° 58'.319 E
Delete	beacon	37° 51'.30 S	144° 57'.34 E
	beacon	37° 51'.32 S	144° 57'.62 E
	buoy	37° 51'.37 S	144° 57'.63 E
	buoy	37° 51'.49 S	144° 57'.80 E
	beacon	37° 51'.64 S	144° 57'.96 E
	depth, 0 ₈ m	37° 52'.11 S	144° 58'.33 E
	depth, 1 ₅ m	37° 51'.30 S	144° 57'.38 E
depth, 3 ₂ m	37° 51'.04 S	144° 56'.89 E	

Aus 155 (plan, St Kilda)

Insert	isolated danger beacon, with topmark	37° 51'.313 S	144° 57'.350 E
	special beacon, with topmark	37° 51'.299 S	144° 57'.447 E
	special beacon, with topmark	37° 51'.465 S	144° 57'.781 E
Move	beacon	37° 51'.33 S	144° 57'.61 E
	to	37° 51'.366 S	144° 57'.591 E
	beacon	37° 51'.98 S	144° 58'.19 E
	to	37° 51'.937 S	144° 58'.129 E
Delete	beacon	37° 51'.30 S	144° 57'.34 E
	buoy	37° 51'.31 S	144° 57'.50 E
	buoy	37° 51'.38 S	144° 57'.62 E
	buoy	37° 51'.39 S	144° 57'.67 E
	buoy	37° 51'.44 S	144° 57'.75 E
	buoy	37° 51'.49 S	144° 57'.79 E
	beacon	37° 51'.67 S	144° 57'.87 E
	beacon	37° 51'.64 S	144° 57'.97 E

1316* AUSTRALIA - BASS STRAIT - Chart limits; legend
 Australian Hydrographic Service (AA503326)

Aus 487 [1312/2010]

Amend	legend to <i>Adjoining Chart Aus 357</i> in N border	38° 14'.5 S	148° 15'.0 E
-------	--	-------------	--------------

Aus 4644 [1312/2010]

Insert	magenta limits, with legend <i>Aus 357</i> in SE corner, between	37° 45'.0 S	146° 20'.0 E
		39° 18'.5 S	146° 20'.0 E
		39° 18'.5 S	149° 28'.0 E
		37° 45'.0 S	149° 28'.0 E
		37° 45'.0 S	146° 20'.0 E

Delete	magenta limits, with legend <i>Aus 357A</i> , centred on	38° 30'.0 S	148° 00'.0 E
--------	--	-------------	--------------

1317(T)/2010 AUSTRALIA - NEW SOUTH WALES - Port Kembla - Light buoys and silt curtain established

Date - Until 1 January 2011

Port Kembla Port Corporation Notice 7/2010 (AA505767, AA506163, AA506164)

A special buoy exists in the vicinity of position 34° 27'.37 S 150° 53'.65 E.

A silt curtain, marked by special light buoys, exists in the vicinity of position 34° 28'.33 S 150° 54'.52 E.

Chart temporarily affected - Aus 194 - Aus 195 - AU5XX194

1318(T)/2010 AUSTRALIA - NEW SOUTH WALES - Broken Bay - Barrenjoey Head - Light range reduced

NSW Maritime (AA506509)

The light (33° 34'.82 S 151° 19'.79 E) has been temporarily altered to *Fl(4)20s 113m 12M*.

Chart temporarily affected - Aus 197 - Aus 204 - Aus 215 - Aus 424 - Aus 489 - Aus 809 - Aus 4643 - AX 0809E - AX 67215

1319(T)/2010 AUSTRALIA - NEW SOUTH WALES - Newcastle - Live firing

Date - Until 10 December 2010

Department of Defence (AA505293)

Live firing activities will be conducted in the Williamstown Air Weapons Range, R595, during the period 6 to 10 December 2010.

A marine danger area extends to all internal waters bounded by 33° 09'.00 S 152° 06'.00 E, thence on the minor arc of a circle of 25M radius centred on 32° 48'.00 S 151° 50'.00 E to 32° 44'.50 S 152° 19'.50 E, 32° 36'.00 S 153° 24'.25 E, thence the minor arc of a circle of 80M radius centred on 32° 48'.00 S 151° 50'.00 E to 33° 03'.00 S 153° 22'.00 E, 33° 17'.00 S 153° 11'.00 E, 33° 25'.00 S 152° 18'.67 E, 33° 20'.50 S 152° 15'.00 E.

All waters, creeks, beaches and other areas within the declared marine danger area are not available for access.

Mariners are advised to keep clear of this area throughout the above times.

Chart temporarily affected - Aus 489 - Aus 809 - Aus 810 - AX 0809E - AU240150 - AU333153 - AU334153 - AU433152

1320(T)/2010 AUSTRALIA - QUEENSLAND - Brisbane River - Depth information

Former Notice - 1248(T)/2010 is cancelled

Port of Brisbane Corporation (AA505477, AA506409)

Available depths and under keel clearances (UKC) at 1 December 2010:

<i>Berth</i>	<i>Metres</i>	<i>Remarks</i>
* Fisherman Islands No10	14.1	
Fisherman Islands No9	14.1	
* Fisherman Islands No8	14.0	
* Fisherman Islands No7	14.2	
Fisherman Islands No6	14.0	
Fisherman Islands No5	14.0	
Fisherman Islands No4	14.0	
* Fisherman Islands No3	14.1	
Fisherman Islands No2	14.1	
* Fisherman Islands No1	14.1	
Fisherman Islands Grain and Woodchip	13.1	
* Caltex Fisherman Islands	14.3	
* BP Luggage Point	14.0	
* Fisherman Islands Coal	13.7	
* Fisherman Islands General Purpose	11.4	
Caltex Products	10.0	
* Cement Australia Co Wharf	9.8	
BP Products	10.9	
Shell	11.1	
* Pacific Terminals	10.8	
* Incitec North	10.1	
* Incitec South	10.5	
* Pinkenba 1	10.3	
* Pinkenba 2	10.3	
Riverside Marina	5.0	
Sugar Terminal	9.7	
Cairncross Fitting Out Wharf	6.6	
Cairncross Breasting Wharf	6.5	
Brisbane Naval Wharf	4.8	
Maritime No3	6.5	(not maintained)
* Maritime No2	9.7	
* Maritime No1	9.0	
Hamilton No4	10.3	
* Hamilton No1	8.9	
* Brisbane Cruise Ship Terminal	9.2	
	<i>Metres</i>	<i>UKC/Remarks</i>
<i>Moreton Bay :</i>		
North East Channel	5.5	1.5
North West Channel	15.0	2.3 (280m width)
North West Bypass Channel	9.2	1.6
Spitfire Channel	15.0	1.5 (600m width)
East Knoll Bypass Channel	6.9	1.4
East Channel	15.0	1.5 (300m width from western side)
Main Channel (M8 - M9)	10.0	1.8
Entrance Channel (E5 - EBCN)	14.7	1.5
<i>Brisbane River :</i>		
Entrance Beacons and Bar Cutting	14.0	1.46
Fisherman Islands Swing Basin	14.0	1.3
Pelican Banks Reach to Hamilton Reach	9.1	0.6 - 0.9

*Indicates new or revised entry.

Chart temporarily affected - Aus 235 - Aus 236 - Aus 237 - Aus 238

1321(T)/2010 AUSTRALIA - QUEENSLAND - Moreton Bay - Ship to ship transfer

Former Notice - 1068(T)/2010 is cancelled

Date - Until 1 February 2011

Maritime Safety Queensland Notice 1003(T)/2010 (AA505325)

Ship to ship transfer of LPG will be conducted at STS1 anchorage (27° 17'.25 S 153° 16'.56 E). An exclusion zone (1850 metres radius) exists around transfer operations.

Chart temporarily affected - Aus 236**1322(T)/2010 AUSTRALIA - QUEENSLAND - Moreton Bay - Coochiemudlo Island - Harbour works**

Date - Until 31 December 2010

Maritime Safety Queensland Notice 993(T)/2010 (AA505774)

Remediation works on the jetty (27° 34'.50 S 153° 19'.95 E) are in progress.

Mariners are advised to navigate with caution in the area.

Chart temporarily affected - Aus 236 - AU428153**1323(T)/2010 AUSTRALIA - QUEENSLAND - Moreton Bay - Manly - Harbour works completed**

Former Notice - 1071(T)/2010 is cancelled

Maritime Safety Queensland Notice 830(T)/2010 (AA496815)

Cancel this notice on receipt.

Chart formerly affected - Aus 236 - AU5237X8**1324(T)/2010 AUSTRALIA - QUEENSLAND - Brisbane River - Boat Passage - Dredging operations**

Date - Until 24 December 2010

Maritime Safety Queensland 1013(T)/2010 (AA506638)

The dredge *Ken Harvey* is conducting dredging operations in the vicinity of 27° 24'.0 S 153° 09'.6 E.

The dredge has deployed anchors marked by light buoys.

The dredge will monitor VHF Ch 12 and display appropriate lights and shapes.

Mariners are advised to navigate with caution in the area.

Chart temporarily affected - Aus 236 - Aus 237 - AU5237X8**1325(T)/2010 AUSTRALIA - QUEENSLAND - Brisbane River - Pinkenba Reach - Dredging operations completed**

Former Notice - 1251(T)/2010 is cancelled

Maritime Safety Queensland Notice 978(T)/2010 (AA502898)

Cancel this notice on receipt.

Chart formerly affected - Aus 238 - AU5237X8**1326(T)/2010 AUSTRALIA - QUEENSLAND - Brisbane River - Harbour works completed**

Former Notices - 1238(T)/2009, 609(T)/2010 are cancelled

Maritime Safety Queensland Notices 699(T)/2009, 467(T)/2010 (AA434984, AA472835)

Note: new edition of ENC AU5237X8 has been released. A new edition of Aus 238 is due to be published early 2011.

Cancel this notice on receipt.

Chart formerly affected - Aus 238 - AU5237X8

3 December 2010

1327(T)/2010 AUSTRALIA - QUEENSLAND - Shoalwater Bay - Live firing completed*Former Notice - 1129(T)/2010 is cancelled*

Maritime Safety Queensland Notice 887(T)/2010 (AA498782)

Cancel this notice on receipt.

Chart formerly affected - Aus 248 - Aus 260 - Aus 261 - Aus 367 - Aus 820 - Aus 822 - AX 0260E - AX 0367E - AX 0820E - AX 0822E - AX 60260 - AX 67248 - AX 67261 - AU423150 - AU5261P1 - AU5261P2 - AU5XX248**1328(T)/2010 AUSTRALIA - QUEENSLAND - Hay Point - Dredging operations completed; mooring buoys recovered***Former Notice - 1078(T)/2010 is cancelled*

Maritime Safety Queensland Notice 854(T)/2010 (AA497011)

Cancel this notice on receipt.

Chart formerly affected - Aus 249 - Aus 250 - AX 0249E - AU422149 - AU5250P2**1329(T)/2010 AUSTRALIA - QUEENSLAND - Hay Point - Depth information***Former Notice - 714(T)/2010 is cancelled*

Maritime Safety Queensland Notice 992(T)/2010 (AA505743)

Available depths as at 19 November 2010:

Metres

HPS Berth No 1	16.2
* HPS Berth No 2	16.7
DBCT Berth No 1	17.8
DBCT Berth No 2	17.8
DBCT Berth No 3	18.7
DBCT Berth No 4	18.4

* Indicates revised entry.

Chart temporarily affected - Aus 249 - Aus 250**1330(T)/2010 AUSTRALIA - QUEENSLAND - Mackay - Depth information***Former Notice - 762(T)/2010 is cancelled*

Maritime Safety Queensland Notice 994(T)/2010 (AA505479)

Available depths as at 23 November 2010:

<i>Remarks</i>	<i>Metres</i>
* Entrance Channel	8.7
* Swing Basin	8.6
Berth No 1	10.6
* Berth No 3	12.7
* Berth No 4	10.4
* Berth No 5	12.1

* Indicates new or revised entry.

Caution: Lesser depths may occur in berthing boxes but are not considered to have an impact on shipping.

Chart temporarily affected - Aus 250

1331(T)/2010 AUSTRALIA - QUEENSLAND - Mourilyan - Depth information

Former Notice - 806(T)/2010 is cancelled

Maritime Safety Queensland Notice 1011(T)/2010 (AA506375)

Available depths as at 30 November 2010:

Metres

Departure Channel	9.6
Inner Channel	9.6
Swing Basin	6.6
* Sugar Berth	9.8

* Indicates revised entry.

Shoaling for a distance of 200m to seaward of the berth pocket can develop over time.

Chart temporarily affected - Aus 258**1332(T)/2010 AUSTRALIA - QUEENSLAND - Mourilyan - Light buoys re-established**

Former Notice - 807(T)/2010 is cancelled

Maritime Safety Queensland (AA504684)

Cancel this notice on receipt.

Chart formerly affected - Aus 258 - AU5258P1**1333(T)/2010 AUSTRALIA - TORRES STRAIT - Yorke Islands - Wreck**

Maritime Safety Queensland Notice 1002(T)/2010 (AA505444)

A wreck exists in position 9° 47'.46 S 143° 32'.88 E.

Mariners are advised to navigate with caution in the area.

Chart temporarily affected - Aus 376 - Aus 377 - Aus 840 - AX 60377**1334(T)/2010 AUSTRALIA - WESTERN AUSTRALIA - Ashmore Reef to Rowley Shoals - Seismic survey completed**

Former Notice - 1141(T)/2010 is cancelled

Searcher Seismic Pty Ltd (AA499496)

Cancel this notice on receipt.

Chart formerly affected - Aus 4603 (INT 603) - Aus 4721 (INT 721) - Aus 4722 (INT 722) - AX 4603F - AX 4721F - AX 4722F - AU130090 - AU130120 - AU220120**1335(T)/2010 AUSTRALIA - WESTERN AUSTRALIA - Bedout Islet - Seismic survey northwards**

Former Notice - 1268(T)/2010 is cancelled

Date - Until 14 January 2011

Fugro Multi Client Services Pty Ltd (AA503347, AA503349, AA505943, AA506001)

MV *Geo Celtic*, with a 7050m towed array, and support vessel *GO Sealink* are conducting survey operations in the area bounded by 18° 30'.0 S to 19° 00'.0 S and 118° 30'.0 E to 119° 00'.0 E. Mariners are advised not to approach within 5M of MV *Geo Celtic*.

Chart temporarily affected - Aus 325 - Aus 326 - Aus 739

1336(T)/2010 AUSTRALIA - WESTERN AUSTRALIA - Rankin Bank to Serrurier Island - Survey and drilling operations completed

Former Notice - 1275(T)/2010 is cancelled

Advanced Geomechanics (AA502890), Department of Transport WA (AA503179)

Cancel this notice on receipt.

Chart formerly affected - Aus 63 - Aus 64 - Aus 328 - Aus 742 - Aus 744 - AU320114 - AU320115 - AU321114 - AU421115 - AU422114 - AU422115 - AU5X64P1

1337(T)/2010 AUSTRALIA - WESTERN AUSTRALIA - Muiron Islands - Light buoy recovered northwestwards

Former Notice - 1392(T)/2009 is cancelled

BHP Billiton Petroleum Pty Ltd (AA506515)

Cancel this notice on receipt.

Chart formerly affected - Aus 328 - Aus 329 - Aus 744 - AU422114

1338(T)/2010 AUSTRALIA - WESTERN AUSTRALIA - North West Cape - Seismic survey southwestwards

Date - Until 27 December 2010

Shell Development (Australia) Pty Ltd (AA505828, AA505837)

MV *Pacific Explorer*, with a 5100m towed array, is conducting survey operations in the area bounded by the following positions:

22° 05'.70 S 113° 04'.88 E

22° 10'.37 S 113° 15'.37 E

22° 03'.03 S 113° 19'.12 E

21° 58'.37 S 113° 08'.63 E.

Chart temporarily affected - Aus 329 - Aus 745 - AU323113

1339(T)/2010 AUSTRALIA - WESTERN AUSTRALIA - Rottnest Island - Scientific instruments recovered

Former Notice - 1210(T)/2010 is cancelled

Defence Science and Technology Organisation (AA498431)

Cancel this notice on receipt.

Chart formerly affected - Aus 334 - Aus 754 - AX 0334E - AX 0754E - AX 66002 - AU432115

1340(T)/2010 AUSTRALIA - WESTERN AUSTRALIA - Fremantle - Depth information*Former Notice - 793(T)/2009 is cancelled*

Fremantle Ports Notice 11(T)/2010 (AA505782)

Available depths as at 19 November 2010:

<i>Berth</i>	<i>Metres</i>
No 1	11.0
No 2	11.0
No 4	12.4
No 5	12.4
* No 6	-
* No 7	-
* No 8	13.0 (east from bollard 54)
No 9	13.0
* No 10	13.0
No 11	10.2
No 12	10.8
C	10.4
D	11.0
E	10.5
F	10.4
G	10.5
H	10.3

* Indicates new or revised entry.

Maximum draft of vessels using inner harbour berths must be obtained by contacting the Harbour Master's office.

Chart temporarily affected - Aus 113**1341(T)/2010 AUSTRALIA - WESTERN AUSTRALIA - Fremantle - Rous Head - Pipeline recovered***Former Notice - 871(T)/2010 is cancelled*

Fremantle Ports Notice 8(T)/2010 (AA485508)

Cancel this notice on receipt.

Chart formerly affected - Aus 113 - AU5XX113**1342(T)/2010 AUSTRALIA - WESTERN AUSTRALIA - Fremantle - Dredging operations completed***Former Notice - 939(T)/2010 is cancelled*

Department for Transport WA Notice 7/2010 (AA451310), Fremantle Ports Notices 10(T)/2010 (AA489855)

Cancel this notice on receipt.

Chart formerly affected - Aus 112 - Aus 113 - Aus 117 - AX 63112 - AX 70117 - AU5XX113**1343(P)/2010 AUSTRALIA - SOUTH AUSTRALIA - Warburto Point - Light altered***Date - On or about 22 November 2010*

Australian Maritime Safety Authority ATH 10/2010 (AA505702)

The light (34° 00'.36 S 137° 33'.03 E) has been altered to *Fl.5s 36m 18M & Iso.R.5s 14M* with red sector 061° - 081° (20°).**Chart which will be affected - Aus 444 - Aus 777 - AU435137**

1344(T)/2010 AUSTRALIA - SOUTH AUSTRALIA - Cape Jaffa - Wreck westwards
Department of Transport, Energy and Infrastructure Notice 51/2010 (AA506578)

A wreck exists in position 36° 52'.30 S 139° 06'.69 E.

Mariners are advised to navigate with caution in the area.

Chart temporarily affected - Aus 347

1345(T)/2010 AUSTRALIA - VICTORIA - Barwon River - Submarine pipeline established

Former Notice - 1034(T)/2010 is cancelled
Barwon Coast (AA506514)

Cancel this notice on receipt.

Chart formerly affected - Aus 143 - AU439144

1346(T)/2010 AUSTRALIA - VICTORIA - Port Phillip - Queenscliff - Dredging operations completed

Former Notice - 1285(T)/2010 is cancelled
Victorian Notice 117(T)/2010 (AA502749)

Cancel this notice on receipt.

Chart formerly affected - Aus 143 - Aus 158 - AU439144 - AU5XX144

1347(T)/2010 AUSTRALIA - VICTORIA - Port Phillip - Corio Bay - Drilling operations

Date - Until 20 December 2010
Victorian Notice 128(T)/2010 (AA505334)

Jack-up barge *Jackup 1* and support vessels *Vital* and *Kopan* are conducting drilling operations in the Port of Geelong.

Information on the location of daily operations and movements of vessels can be obtained by contacting Geelong Marine Control on VHF Ch 12 and 03 52470300 or support vessel *Kopan* on VHF Ch 12, 0409 856 234 and 0408 532 221.

Mariners are advised to navigate with caution in the area.

Chart temporarily affected - Aus 143 - Aus 153 - Aus 157 - AU439144 - AU5XX153

1348(P)/2010 AUSTRALIA - VICTORIA - Port Phillip - St Kilda - Light beacon to be established

Date - On or about 10 December 2010
Victorian Notices 107(T)/2010 (AA499494)

A beacon exists in position 37° 52'.33 S 144° 58'.21 E with a temporary light *Fl(2)6s*. The beacon will be upgraded to a port lateral light beacon.

Chart which will be affected - Aus 155 - AU438144

1349(T)/2010 AUSTRALIA - VICTORIA - Port Phillip - Brighton - Dredging operations

Former Notice - 886(T)/2010 is cancelled
Victorian Notice 77(T)/2010 (AA484800)

Cancel this notice on receipt.

Chart formerly affected - Aus 143 - Aus 155 - AU438144

1350(T)/2010 AUSTRALIA - VICTORIA - Port Phillip - Mornington - Dredging operations completed

Former Notice - 1216(T)/2010 is cancelled

Victorian Notice 113(T)/2010 (AA500688)

Cancel this notice on receipt.

Chart formerly affected - Aus 143 - Aus 158 - AU5143P3**1351(T)/2010 AUSTRALIA - VICTORIA - Port Phillip - Rosebud - Dredging operations**

Date - Until 20 December 2010

Victorian Notice 127(T)/2010 (AA505345)

Dredging operations are in progress in the vicinity of position 38° 21'.25 S 144° 54'.10 E.

Mariners are advised to navigate with caution in the area.

Chart temporarily affected - Aus 158**1352(T)/2010 AUSTRALIA - VICTORIA - Port Phillip - Rye - Dredging operations**

Date - Until 28 January 2011

Victorian Notice 118(T)/2010 (AA505778)

Dredging operations are in progress in position 38° 22'.08 S 144° 49'.24 E.

The dredge material will be deposited in the vicinity of position 38° 22'.14 S 144° 49'.46 E.

All hazards to navigation will display appropriate lights and symbols.

Mariners are advised to navigate with caution in the area.

Chart temporarily affected - Aus 158**1353(T)/2010 AUSTRALIA - VICTORIA - Western Port - Tankerton - Dredging operations completed**

Former Notice - 1218(T)/2010 is cancelled

Victorian Notice 111(T)/2010 (AA500621)

Cancel this notice on receipt.

Chart formerly affected - Aus 150 - Aus 151 - AU439145**1354(T)/2010 AUSTRALIA - VICTORIA - Corner Inlet - Shoaling**

Former Notice - 1213(T)/2008 is cancelled

Victorian Notice 128(T)/2008 (AA368471)

Shoaling exists along the northern bank of the main entrance in the vicinity of position 38° 50'.9 S 146° 34'.8 E (WGS84 datum).

Mariners are advised to navigate along the Lighthouse Point directional light centreline of 277° when transiting the area.

Chart temporarily affected - Aus 181 - Aus 802

HYDROGRAPHIC REPORTS

<i>Locality</i>	<i>Report</i>	<i>Ship/Authority</i>	<i>Observer</i>
INDONESIA- Selat Baur	Nav aids	HMAS <i>Success</i>	
NSW- Pittwater Barrenjoey Head	Navaid Light		D Curtin T Hughes

NAVIGATION WARNINGS

The following radio messages have been received during the period to 3 December 2010. Signal copies of these messages may be destroyed. It is recommended that the reprint of Navigational Warnings should be kept in a file or a book divided into areas. Cancellation should be made on receipt of signals and reprints.

Rigs on location other than those listed in the latest Section III summary are the subject of Radio Navigational Warnings. Rigs in transit will not be the subject of Warnings.

AUSCOAST WARNING

- 283 Special purpose vessels *Miclyn Endurance* and *DB30* conducting underwater operations in area bounded by 38° 11'.00 S to 38° 14'.50 S and 148° 00'.50 E to 148° 36'.00 E. 2M clearance requested.
- 284 Drill rig *Ocean Epoch* in position 21° 33'.85 S 114° 13'.40 E. 2.5M clearance requested.
- 285 Cancelled.
- 286 Cancelled.
- 287 Cancelled.
- 288 Cancelled.
- 289 Drill rig *Atwood Eagle* in position 20° 06'.37 S 114° 43'.08 E. 2.5M clearance requested.
- 290 Drill rig *Songa Venus* in position 19° 32'.66 S 115° 31'.85 E. 2.5M clearance requested.
- 291 Cancelled.
- 292 Submerged FPSO mooring buoy reported in position 21° 24'.2 S 114° 05'.3 E Van Gough production wells at 230816UTC. Surface buoy in proximity. No AIS or morse light character available.
- 293 Cancelled.
- 294 Cancelled.
- 295 Drill rig *Kan Tan IV* in position 39° 54'.33 S 145° 03'.51 E. 2.5M clearance requested.
- 296 Cancelled.
- 297 Four anchors marked by lit buoys exist within a 1M radius of position 20° 04'.0 S 113° 46'.8 E.
- 298 Six anchors marked by unlit buoys exist within a 2M radius of position 38° 09'.8 S 148° 30'.0 E.
- 299 Special purpose vessel *Geo Atlantic* conducting seismic survey towing ten cables in area bounded by 17° 57'.0 S to 19° 27'.0 S and 114° 15'.0 E to 118° 36'.0 E. Special care should be taken while using the Dampier fairway. *Geo Atlantic* will turn in or near the fairway between 18° 44'.0 S and 19° 17'.0 S. 6M clearance requested.
- 300 Special purpose vessel *Geo Celtic* conducting seismic survey towing ten 4M cables in area bounded by 18° 33'.0 S to 18° 57'.0 S and 118° 39'.0 E to 118° 55'.0 E. 6M clearance requested.

NAVAREA X WARNINGS

Nil.

Navigational warnings in force as at 030001UTC DEC 10.**Auscoast**

259 260 271 274 275 276 277 280 281 282 283 284 280 284 289 290 292 295 297 298 299 300

Navarea X

010

Summary of mobile drilling rigs as at 030001UTC DEC 10.

<i>Name</i>	<i>Position</i>
EnSCO 109	20° 17'.23 S 116° 16'.31 E
Songa Venus	19° 32'.66 S 115° 31'.85 E
Atwood Eagle	20° 06'.37 S 114° 43'.08 E
Ocean America	19° 23'.59 S 114° 18'.43 E
Maersk Discoverer	19° 14'.90 S 114° 12'.70 E
Ocean Epoch	21° 33'.85 S 114° 13'.40 E
Kan Tan IV	39° 54'.33 S 145° 03'.51 E
Ocean Patriot	38° 07'.02 S 148° 23'.01 E

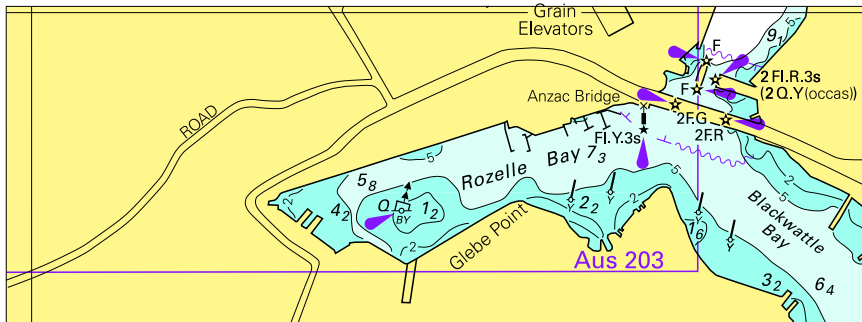
NAVAREA XIV WARNINGS

Nil.

Navarea XIV warnings in force as at 030001UTC DEC 10.

019 038 047

To accompany Australian Notice to Mariners 1296/2010

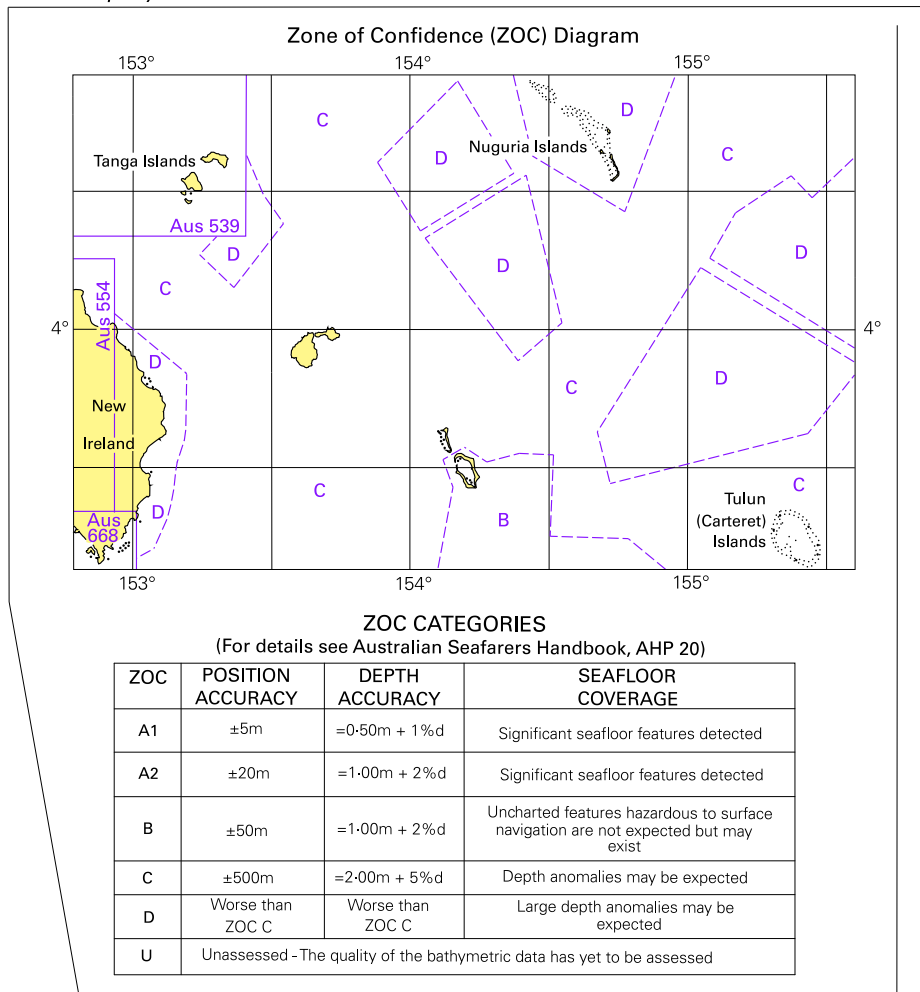


Block for chart Aus 200

© Commonwealth of Australia 2010

(114.2x41.9mm)

To accompany Australian Notice to Mariners 1300/2010

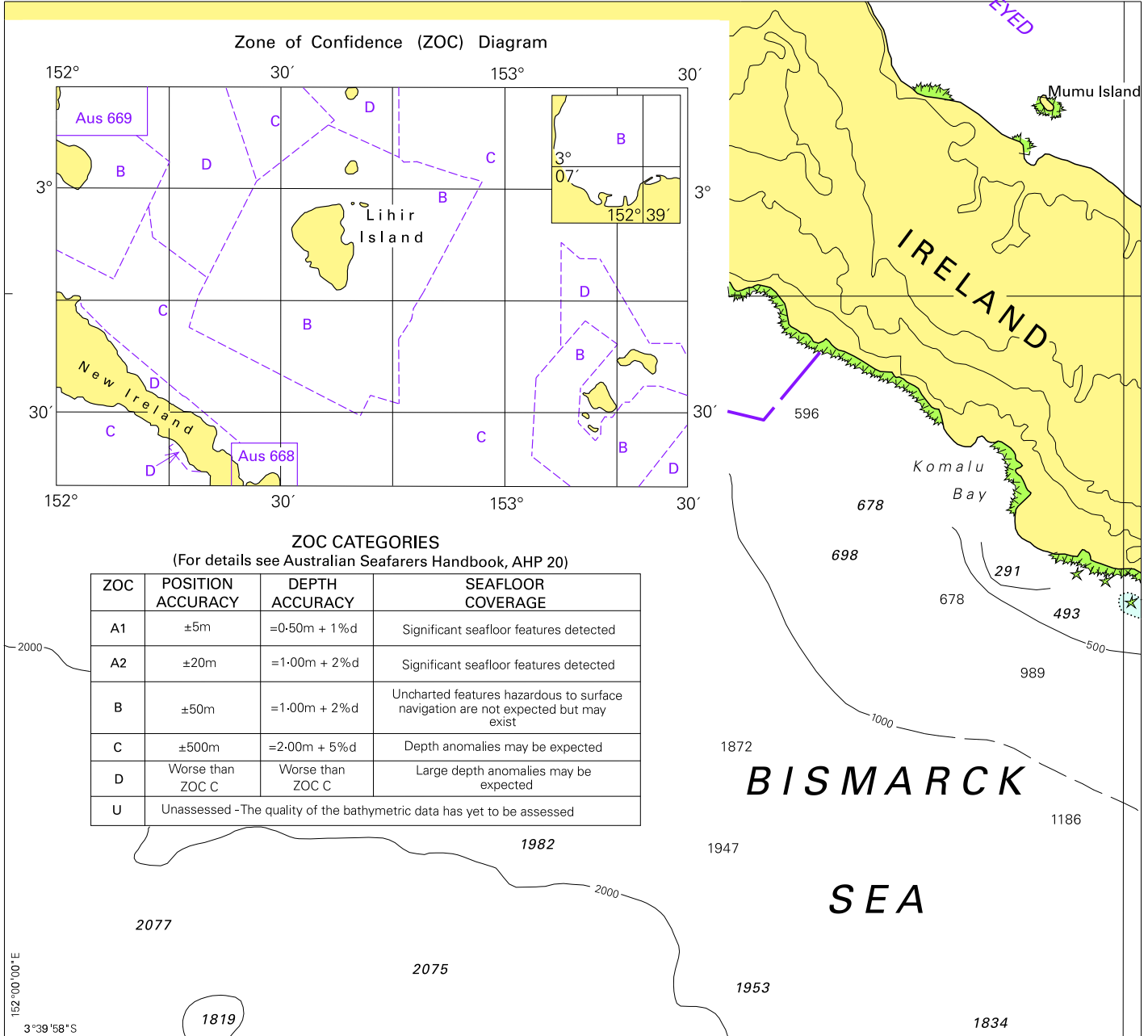


Block for chart Aus 398

© Commonwealth of Australia 2010

(121.6 x 131mm)

To accompany Australian Notice to Mariners 1300/2010



ZOC CATEGORIES

(For details see Australian Seafarers Handbook, AHP 20)

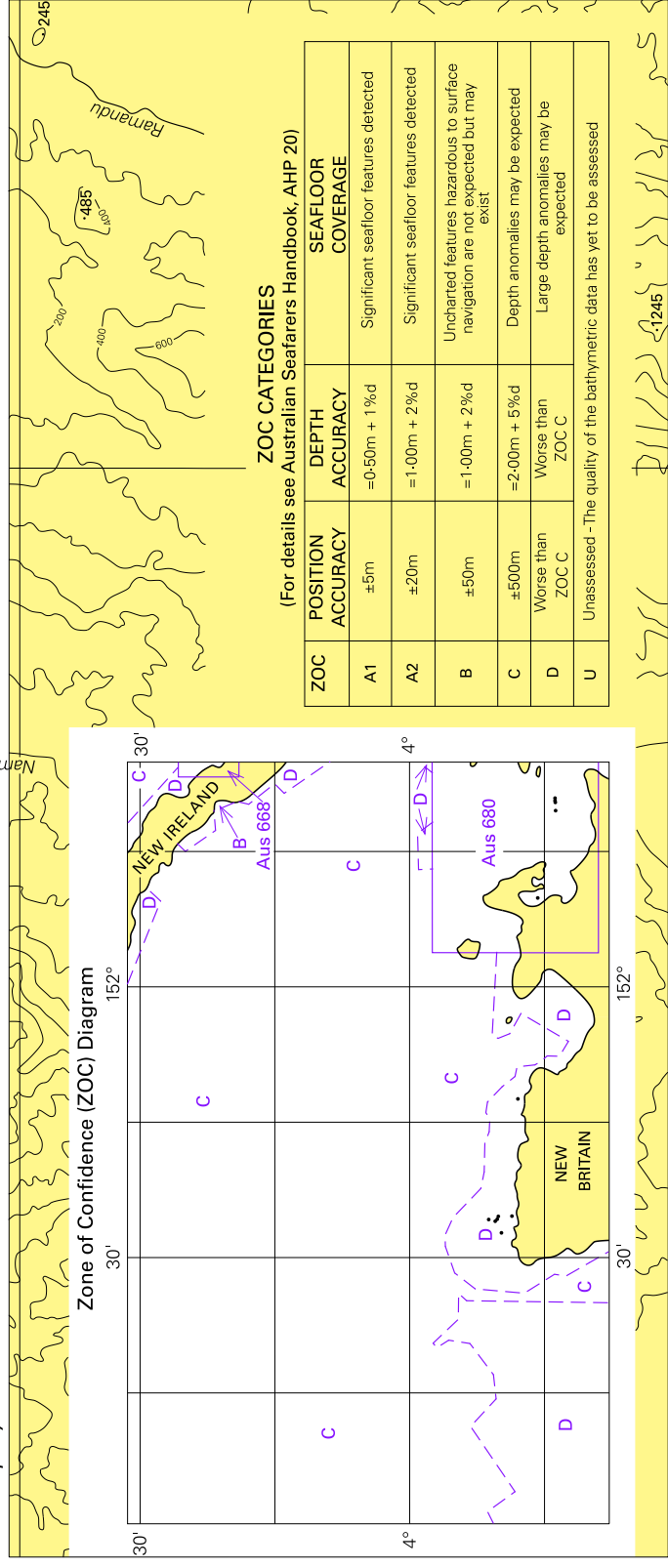
ZOC	POSITION ACCURACY	DEPTH ACCURACY	SEAFLOOR COVERAGE
A1	±5m	=0.50m + 1% d	Significant seafloor features detected
A2	±20m	=1.00m + 2% d	Significant seafloor features detected
B	±50m	=1.00m + 2% d	Uncharted features hazardous to surface navigation are not expected but may exist
C	±500m	=2.00m + 5% d	Depth anomalies may be expected
D	Worse than ZOC C	Worse than ZOC C	Large depth anomalies may be expected
U	Unassessed - The quality of the bathymetric data has yet to be assessed		

Block for chart Aus 539

© Commonwealth of Australia 2010

(185.9 x 169.6mm)

To accompany Australian Notice to Mariners 1300/2010



ZOC CATEGORIES

(For details see Australian Seafarers Handbook, AHP 20)

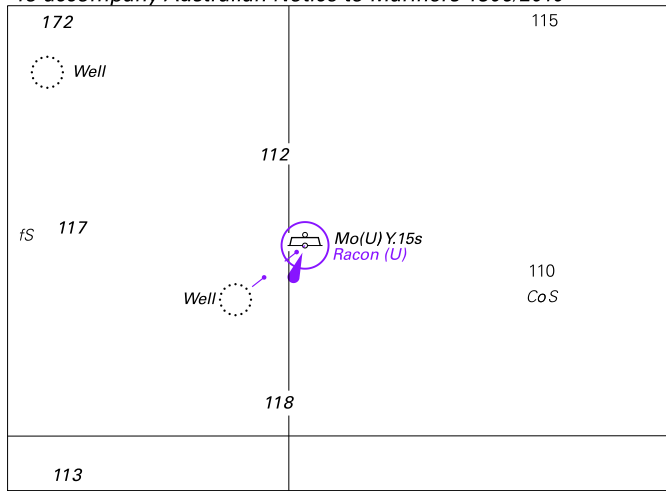
ZOC	POSITION ACCURACY	DEPTH ACCURACY	SEAFLOOR COVERAGE
A1	±5m	=0.50m + 1% d	Significant seafloor features detected
A2	±20m	=1.00m + 2% d	Significant seafloor features detected
B	±50m	=1.00m + 2% d	Uncharted features hazardous to surface navigation are not expected but may exist
C	±500m	=2.00m + 5% d	Depth anomalies may be expected
D	Worse than ZOC C	Worse than ZOC C	Large depth anomalies may be expected
U	Unassessed	The quality of the bathymetric data has yet to be assessed	

Block for chart Aus 545

© Commonwealth of Australia 2010

(210-9 x 88-3mm)

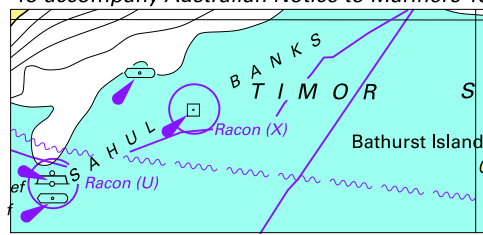
To accompany Australian Notice to Mariners 1306/2010



© Commonwealth of Australia 2010 (88.3 x 64.1mm)

Block for chart Aus 314

To accompany Australian Notice to Mariners 1306/2010

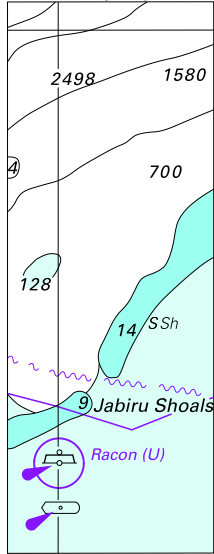


© Commonwealth of Australia 2010

Block for chart Aus 4060

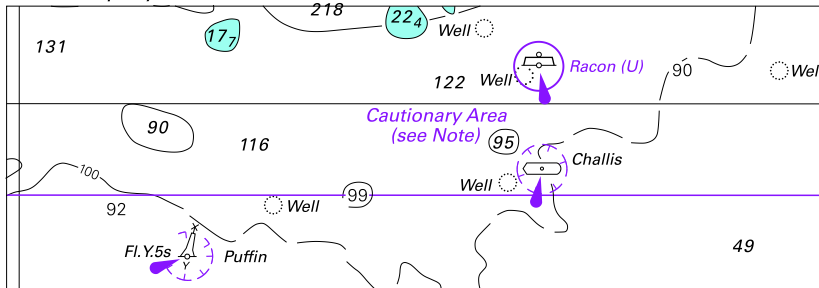
(62.7 x 29.5mm)

To accompany Australian Notice to Mariners 1306/2010



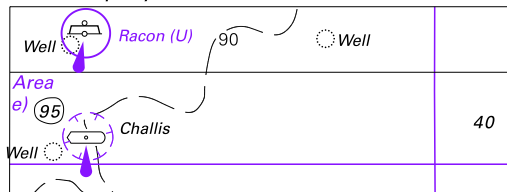
© Commonwealth of Australia 2010
Block for chart Aus 4603
 (27.3 x 72.9mm)

To accompany Australian Notice to Mariners 1306/2010



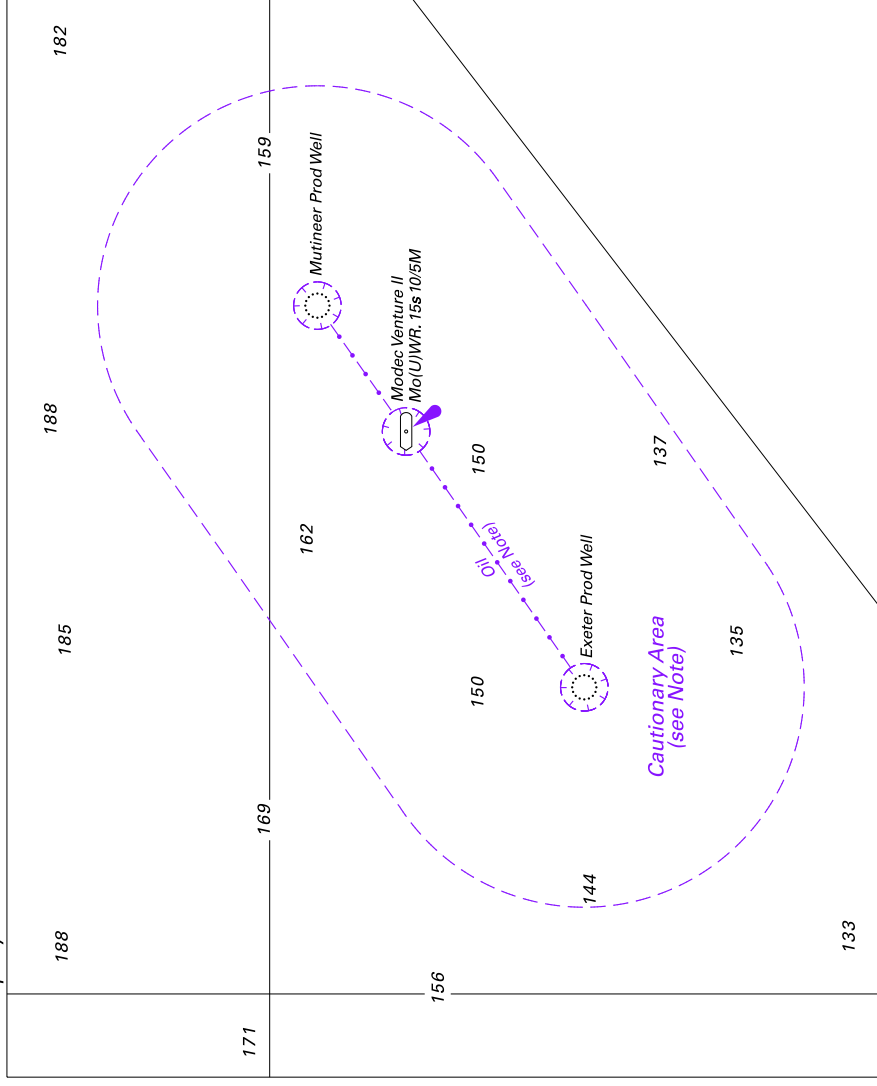
© Commonwealth of Australia 2010
Block for chart Aus 4721
 (108.8 x 37.6mm)

To accompany Australian Notice to Mariners 1306/2010



© Commonwealth of Australia 2010
Block for chart Aus 4722
 (67.0 x 25.0mm)

To accompany Australian Notice to Mariners 1309/2010



Block for chart Aus 741

© Commonwealth of Australia 2010

(115.9 x 143.0mm)