



5 November 2010

Edition 22

Australian Notices to Mariners are the authority for correcting Australian Charts and Publications

AUSTRALIAN NOTICES TO MARINERS

Notices 1154 – 1218 

Published fortnightly by the Australian Hydrographic Service

Commodore R. NAIRN RAN
Hydrographer of Australia

SECTIONS.

- I. **Australian Notices to Mariners, including blocks and notes.**
- II. **Hydrographic Reports.**
- III. **Navigational Warnings.**

SUPPLEMENTS.

- I. **Tracings**
- II. **Cumulative List of Australian Notices to Mariners.**
- III. **Temporary and Preliminary Notices in force.**
- IV. **Amendments to Admiralty List of Lights and Fog Signals (Vol K),
Radio Signals (NP 281(2), 282, 283(2), 285, 286(4)) and Sailing
Directions (NP 9, 13, 14, 15, 33, 34, 35, 36, 39, 44, 51, 60, 61, 62, 100, 136).**

© Commonwealth of Australia 2010

This work is copyright. Apart from any use permitted under the Copyright Act 1968, no part may be reproduced by any process, adapted, communicated or commercially exploited without prior written permission from The Commonwealth represented by the Australian Hydrographic Service.

IMPORTANT NOTICE

This edition of Notices to Mariners includes all significant information affecting AHS products which the AHS has become aware of since the last edition. All reasonable efforts have been made to ensure the accuracy and completeness of the information, including third party information, on which these updates are based. The AHS regards third parties from which it receives information as reliable, however the AHS cannot verify all such information and errors may therefore exist. The AHS does not accept liability for errors in third party information.

GENERAL INSTRUCTIONS

The substance of these notices should be inserted on the charts affected.

Bearings are referred to the true compass and are reckoned clockwise from North; those relating to lights are given as seen by an observer from seaward. Positions quoted in permanent notices relate to the horizontal datum for the chart(s). When preliminary or temporary notices affect multiple charts, positions will be provided in relation to only one horizontal datum and that datum will be specified. When the multiple charts do not have a common horizontal datum, mariners will be required to adjust the position(s) for those charts not on the specified datum. The range quoted for a light is its nominal range. Depths are with reference to the chart datum of each chart. Heights are above mean high water springs or mean higher high water, as appropriate.

The capital letter (P) or (T) after the number of any notice denotes a preliminary or temporary notice respectively, which are contained separately at the end of the permanent notices. A star (*) adjacent to the number of a notice indicates that the notice is based on original information.

REPORTING OF DANGERS

Mariners are particularly requested to notify the AUSTRALIAN HYDROGRAPHIC SERVICE, Locked Bag 8801 Wollongong, NSW 2500 (Fax 02-4223 6599, e-mail Hydro.NTM@defence.gov.au or, alternatively by filling in and submitting the [Hydrographic Notes](#) forms located on the web site – www.hydro.gov.au), immediately on the discovery of new dangers or suspected dangers to navigation. For changes or defects in aids to navigation notify AusSAR (Fax 02-6230 6868 or email rccaus@amsa.gov.au).

AUTHORISED USE

Copies of Australian notices are available free of charge from the Australian Hydrographic Service (AHS) website (www.hydro.gov.au) and through the eNotices (email) service (www.hydro.gov.au/enotices/enotices.htm).

Individual Notices may be copied for the purpose of inserting Notice substance on official charts and publications. Paper copies may be printed by chart agents and distributed to customers on a cost recovery basis. Participating chart agents are listed on the AHS website as providing a 'Paper Notices to Mariners' service (www.hydro.gov.au/prodserv/distributors/distributors.htm). Copies of the notices may not be sold for profit without prior written agreement.

NUMERICAL INDEX OF NOTICES TO MARINERS

Edition No 22

Notices	Aus Chart, INT Chart, ENC Cell, AHP
1154.....	Aus 308, 357, 357A, 422, 423, 714, 719, 4643, 4644, INT 643, 644, AU411105, 411106, 419122, AHP 11, 114
1155.....	Amendment to Australian National Tide Tables
1156.....	Aus 202
1157.....	Aus 209
1158.....	Aus 236
1159.....	Aus 235
1160.....	Aus 365, 366, 817, 818
1161.....	Aus 250
1162.....	Aus 292, 293, 839
1163.....	Aus 393, 397, 398, 539, 545, 554
1164.....	Aus 6
1165.....	Aus 442, 717
1166.....	Aus 311, 312, 313, 4721, INT 721, AX 0311F, 3012F, 4721F
1167.....	Aus 316, 724
1168.....	Aus 52, 53
1169.....	Aus 59
1170.....	Aus 744, 745
1171.....	Aus 112, AX 63112
1172.....	Aus 109, 110, 118, AX 0110E, 0118E
1173.....	Aus 134
1174.....	Aus 139, 780, 781
1175.....	Aus 130
1176.....	Aus 125
1177.....	Aus 173, 795
1178.....	Aus 143, 349, 788
1179.....	Aus 157
1180.....	Aus 155
1181(T).....	Aus 207, 208
1182(T).....	Aus 235, 236, 237, 238, AU5237X8
1183(T).....	Aus 236
1184(T).....	Aus 236, AU428153
1185(T).....	Aus 238, AU5237X8
1186(T).....	Aus 245, 819, AU424151, 5244X5
1187(T).....	Aus 251, 824
1188(T).....	Aus 251, 252, 824
1189(T).....	Aus 252, 254, 824
1190(T).....	Aus 252, 254, 824
1191(T).....	Aus 252, 253, 824
1192(T).....	Aus 252, 253
1193(T).....	Aus 252, 253, 254
1194(T).....	Aus 252
1195(T).....	Aus 252
1196(T).....	Aus 262, 830, AX 6027S, 63262, AU417145, 5262X4
1197(T).....	Aus 259, 828
1198(T).....	Aus 292, 293
1199(T).....	Aus 309, 315, AX 0309F, 0315F, 72309, AU312127, 312128, 313127, 313128
1200(T).....	Aus 314, AX 0314F, AU312124
1201(T).....	Aus 319, 322, AX 0319F, 0322F, AU314123
1202(T).....	Aus 319, 320, AX 0319F, AU314123
1203(T).....	Aus 324, AU418122
1204(T).....	Aus 324
1205(T).....	Aus 54, AU5XXX54
1206(T).....	Aus 327, 4723
1207(T).....	Aus 327, 741
1208(T).....	Aus 327, 328, AU320115
1209(T).....	Aus 327, 328
1210(T).....	Aus 334, 754, AX 0334E, 0754E, 66002, AU432115
1211(T).....	Aus 778
1212(T).....	Aus 125, 781
1213(T).....	Aus 349, 787, AU439142
1214(T).....	Aus 167, 799, AU442146, 5167X8
1215(P).....	Aus 157
1216(T).....	143, 158, AU5143P3
1217(T).....	Aus 150, 801, AU439145
1218(T).....	Aus 150, 151, AU439145

NUMERICAL INDEX OF CHARTS AFFECTED

Edition No 22

Aus Chart	Notices	Aus Chart	Notices
Aus 6.....	1164	Aus 357	1154
Aus 52.....	1168	Aus 357A	1154
Aus 53.....	1168	Aus 365	1160
Aus 54.....	1205(T)	Aus 366	1160
Aus 59.....	1169	Aus 393	1163
Aus 109.....	1172	Aus 397	1163
Aus 110.....	1172	Aus 398	1163
Aus 112.....	1171	Aus 422	1154
Aus 118.....	1172	Aus 423	1154
Aus 125.....	1176, 1212(T)	Aus 442	1165
Aus 130.....	1175	Aus 539	1163
Aus 134.....	1173	Aus 545	1163
Aus 139.....	1174	Aus 554	1163
Aus 143.....	1178, 1216(T)	Aus 714	1154
Aus 150.....	1217(T), 1218(T)	Aus 717	1165
Aus 151.....	1218(T)	Aus 719	1154
Aus 155.....	1180	Aus 724	1167
Aus 157.....	1179, 1215(P)	Aus 741	1207(T)
Aus 158.....	1216(T)	Aus 744	1170
Aus 167.....	1214(T)	Aus 745	1170
Aus 173.....	1177	Aus 754	1210(T)
Aus 202.....	1156	Aus 778	1211(T)
Aus 207.....	1181(T)	Aus 780	1174
Aus 208.....	1181(T)	Aus 781	1174, 1212(T)
Aus 209.....	1157	Aus 787	1213(T)
Aus 235.....	1159, 1182(T)	Aus 788	1178
Aus 236.....	1158, 1182(T), 1183(T), 1184(T)	Aus 795	1177
Aus 237.....	1182(T)	Aus 799	1214(T)
Aus 238.....	1182(T), 1185(T)	Aus 801	1217(T)
Aus 245.....	1186(T)	Aus 817	1160
Aus 250.....	1161	Aus 818	1160
Aus 251.....	1187(T), 1188(T)	Aus 819	1186(T)
Aus 252.....	1188(T), 1189(T), 1190(T), 1191(T), 1192(T), 1193(T), 1194(T), 1195(T)	Aus 824	1187(T), 1188(T), 1189(T), 1190(T), 1191(T)
Aus 253.....	1191(T), 1192(T), 1193(T)	Aus 828	1197(T)
Aus 254.....	1189(T), 1190(T), 1193(T)	Aus 830	1196(T)
Aus 259.....	1197(T)	Aus 839	1162
Aus 262.....	1196(T)	Aus 4643	1154
Aus 292.....	1162, 1198(T)	Aus 4644	1154
Aus 293.....	1162, 1198(T)	Aus 4721	1166
Aus 308.....	1154	Aus 4723	1206(T)
Aus 309.....	1199(T)	AX 0110E	1172
Aus 311.....	1166	AX 0118E	1172
Aus 312.....	1166	AX 0309F	1199(T)
Aus 313.....	1166	AX 0311F	1166
Aus 314.....	1200(T)	AX 0312F	1166
Aus 315.....	1199(T)	AX 0314F	1200(T)
Aus 316.....	1167	AX 0315F	1199(T)
Aus 319.....	1201(T), 1202(T)	AX 0319F	1201(T), 1202(T)
Aus 320.....	1202(T)	AX 0322F	1201(T)
Aus 322.....	1201(T)	AX 0334E	1210(T)
Aus 324.....	1203(T), 1204(T)	AX 0754E	1210(T)
Aus 327.....	1206(T), 1207(T), 1208(T), 1209(T)	AX 4721F	1166
Aus 328.....	1208(T), 1209(T)	AX 6027S	1196(T)
Aus 334.....	1210(T)	AX 63112	1171
Aus 349.....	1178, 1213(T)	AX 63262	1196(T)
		AX 66002	1210(T)
		AX 72309	1199(T)

INT Chart	Notices
INT 643	1154
INT 644	1154
INT 721	1166
ENC Cell	Notices
AU312124	1200(T)
AU312127	1199(T)
AU312128	1199(T)
AU313127	1199(T)
AU313128	1199(T)
AU314122	1201(T)
AU314123	1201(T), 1202(T)
AU320115	1208(T)
AU411105	1154
AU411106	1154
AU417145	1196(T)
AU418122	1203(T)
AU419122	1154
AU424151	1186(T)
AU428153	1184(T)
AU432115	1210(T)
AU439142	1213(T)
AU439145	1217(T), 1218(T)
AU442146	1214(T)
AU5XXX54	1205(T)
AU5143P3	1216(T)
AU5167X8	1214(T)
AU5237X8	1182(T), 1185(T)
AU5244X5	1186(T)
AU5262X4	1196(T)

1154 AUSTRALIA - Product

Australian Hydrographic Service (AA500062, AA501552)

New Chart

<i>Chart</i>	<i>Published</i>	<i>Title and description of amendments</i>	<i>Scale</i>	<i>Index Chart</i>	<i>Price</i>
Aus 714	5/11/2010	Australia - North Coast - Northern Territory - New Year Island to Port Essington 10° 02'.2 S - 11° 35'.0 S 132° 05'.4 E - 133° 04'.8 E <i>New metric chart referred to WGS84 datum and LAT, providing improved coverage of Arnhem Land between New Year Island and Port Essington; with maritime boundaries.</i>	1:150 000	Aus 5000	\$35.00
Aus 719	5/11/2010	Australia - North Coast - Northern Territory - Cuthbert Point to New Year Island 10° 23'.2 S - 11° 56'.0 S 132° 57'.4 E - 133° 56'.8 E <i>New metric chart referred to WGS84 datum and LAT, providing improved coverage of Arnhem Land between Cuthbert Point and New Year Island; with maritime boundaries.</i>	1:150 000	Aus 5000	\$35.00
Aus 4643 (INT 643)	24/9/2010	Australia - East Coast - Cape Howe to Cape Moreton 26° 20'.0 S - 40° 00'.0 S 149° 50'.0 E - 159° 24'.0 E <i>New chart, part of 1.5M international chart series.</i>	1:1 500 000	Aus 5001	\$35.00
Aus 4644 (INT 644)	24/9/2010	Southern Ocean - Cape Otway to Cape Howe including Tasmania 37° 00'.0 S - 48° 08'.0 S 143° 30'.0 E - 153° 04'.0 E <i>New chart, part of 1.5M international chart series.</i>	1:1 500 000	Aus 5001	\$35.00

New Electronic Navigation Chart (Seafarer ENC)

<i>Cell Name</i>	<i>Released</i>	<i>Title</i>
AU411105	November 2010	Indian Ocean - Christmas Island
AU411106	November 2010	Indian Ocean - Eastern Approach to Christmas Island
AU419122	November 2010	Western Australia - Roebuck Bay to Cape Villaret

New Chart to be published shortly

<i>Chart</i>	<i>Title</i>	<i>Scale</i>	<i>Expected Publication Date</i>
Aus 357	Australia - South Coast - Victoria - South East Point to Point Hicks	1:300 000	19 November 2010

Chart permanently withdrawn without replacement

<i>Chart</i>	<i>On publication of new chart</i>
Aus 308	Aus 714 and Aus 719
Aus 422	Aus 4644
Aus 423	Aus 4643

Chart to be permanently withdrawn without replacement

<i>Chart</i>	<i>On publication of new chart</i>
Aus 357A	Aus 357

Australian National Tide Tables

<i>No</i>	<i>Title</i>	<i>Recommended Retail Price (incl GST)</i>	<i>Remarks</i>
AHP 11	Australian National Tide Tables (ANTT) 2011	\$64.90	Australian National Tide Tables 2011 for Australia, Antarctica, Papua New Guinea, Solomon Islands and East Timor. Available from accredited chart agents.
AHP 114	Seafarer® Tides (SFT) 2011	\$59.95	Electronic Tide Tables (Seafarer Tides) 2011 for Australia, Antarctica, Papua New Guinea, Solomon Islands and East Timor. Provides tidal data for 2009 and 2010. Available from accredited chart agents and Seafarer® product distributors.

For further details refer to the AHS website at www.hydro.gov.au for new edition and new chart stock arrival information.

When placing orders with a chart agent, mariners should advise whether their order pertains to the current edition or the new edition.

1155 AUSTRALIA - Amendment to Australian National Tide Tables

Australian Hydrographic Service (AA500070)

ANTT 2010

Page 312

Amend PORT NAME to Peron I. North

Page 402

Amend PORT NAME to Peron I. North

Page 424

Amend Port to Peron Island North

ANTT 2011

Page 319

Amend PORT NAME to Peron I. North

Page 410

Amend PORT NAME to Peron I. North

Page 429

Amend Port to Peron Island North

1156* AUSTRALIA - NEW SOUTH WALES - Port Jackson - Parramatta River - Manns Point - Depths

Former Notice - 454(T)/2006 is cancelled

Sydney Ports Corporation (DHDB1636210)

Aus 202 [1040/2010]

Insert	depth, 13 ₄ m	33° 50'.506 S	151° 11'.287 E
	depth, 13 ₄ m	33° 50'.572 S	151° 11'.302 E
Delete	depth, 13 ₆ m	33° 50'.52 S	151° 11'.32 E
	depth, 14 ₂ m	33° 50'.60 S	151° 11'.31 E

1157* AUSTRALIA - NEW SOUTH WALES - Port Stephens - Corrie Island - Depths, coastline

Former Notice - 658(T)/2009 is cancelled

Department of Environment, Climate Change and Water NSW (DHDB 1525097)

Aus 209 [585/2010]

Insert	accompanying block	32° 40'.5 S	152° 08'.5 E
--------	--------------------	-------------	--------------

5 November 2010

1158* AUSTRALIA - QUEENSLAND - Moreton Bay - Scarborough - Light beacon altered

Maritime Safety Queensland Notice 900/2010 (AA498768)

Aus 236 [1106/2010]Amend light beacon to *Fl.Y.2.5s* 27° 11'.0 S 153° 06'.2 E**1159* AUSTRALIA - QUEENSLAND - Caloundra to Point Cartwright - Depths***Former Notice - 620(P)/2009 is cancelled*

Port of Brisbane Corporation (DHDB 1616271)

Aus 235 [1108/2010]

Insert	depth, 13 ₉ m, enclosed by contour	26° 45'.15 S	153° 10'.68 E
	depth, 23 ₅ m, and extend contour E to enclose	26° 41'.14 S	153° 13'.20 E
	depth, 19 ₉ m, enclosed by contour	26° 40'.90 S	153° 12'.66 E
	depth, 24 ₇ m	26° 40'.55 S	153° 14'.20 E
	depth, 17 ₃ m, and extend contour E to enclose	26° 43'.49 S	153° 11'.31 E
Substitute	depth, 26 ₁ m, for depth, 23 ₅ m	26° 48'.7 S	153° 13'.1 E
	depth, 25 ₃ m, for depth, 20 ₁ m	26° 48'.2 S	153° 13'.1 E
Delete	depth, 18 ₃ m	26° 45'.3 S	153° 10'.9 E
	depth, 21 ₁ m	26° 43'.7 S	153° 11'.2 E

1160* AUSTRALIA - QUEENSLAND - Breaksea Spit - Wreck

M Ryan, P Taylor and M Whitmore (AA501416), T Jackson, Australian Hydrographic Service (AA499392)

Aus 365 [735/2010]Insert safe clearance depth, 13_{fm}, enclosed by danger circle with legend, *Wk* 24° 29'.05 S 153° 17'.07 E**Aus 366 [899/2010]**Insert safe clearance depth, 13_{fm}, enclosed by danger circle with legend, *Wk* 24° 29'.05 S 153° 17'.15 E**Aus 817 [1047/2010]**Insert safe clearance depth, 13_{fm}, enclosed by danger circle with legend, *Wk* 24° 29'.04 S 153° 17'.15 E**Aus 818 [183/2009]**Insert safe clearance depth, 25_m, enclosed by danger circle with legend, *Wk* 24° 28'.95 S 153° 17'.13 E

Delete depth, 40m 24° 28'.9 S 153° 17'.2 E

1161* AUSTRALIA - QUEENSLAND - Mackay - Jetty demolished*Former Notice - 724(T)/2009 is cancelled*

Maritime Safety Queensland (AA491606, AA491607)

Aus 250 (plan, Mackay Harbour) [831/2010]

Insert accompanying block 21° 06'.3 S 149° 13'.8 E

1162* AUSTRALIA - TORRES STRAIT - Twin Island - Depth
Australian Hydrographic Service (AA499823)

Aus 292 [836/2010]		
Delete	depth, 0 ₅ m ED and enclosing contour	10° 27'.5 S 142° 25'.6 E
Aus 293 [836/2010]		
Delete	depth, 0 ₅ m ED and enclosing contour	10° 27'.64 S 142° 25'.48 E
Aus 839 [834/2010]		
Delete	depth, 0 ₅ m ED and enclosing contour	10° 27'.5 S 142° 25'.6 E

1163* PAPUA NEW GUINEA - Nabuto Bay to Cape Hapag - Chart limits
Australian Hydrographic Service (AA500062)

Aus 393 [537/2009]		
Insert	magenta limits, with legend <i>Aus 668</i> in NE corner, between	3° 34'.26 S 152° 32'.13 E 3° 34'.26 S 152° 23'.30 E 3° 41'.00 S 152° 23'.30 E 3° 41'.00 S 152° 32'.13 E 3° 34'.26 S 152° 32'.13 E
Delete	magenta limits, with legend <i>Aus 668</i> , centred on	3° 38'.0 S 152° 27'.0 E
Aus 397 [950/2010]		
Insert	magenta limits, with legend <i>Aus 668</i> in SW corner, between	4° 39'.50 S 153° 00'.68 E 4° 39'.50 S 152° 43'.00 E 4° 52'.98 S 152° 43'.00 E 4° 52'.98 S 153° 00'.68 E 4° 39'.50 S 153° 00'.68 E
Aus 398 [844/2008]		
Insert	magenta limits, with legend <i>Aus 668</i> in NE corner, between	4° 39'.50 S 152° 47'.10 E 4° 39'.50 S 153° 00'.68 E 4° 52'.12 S 153° 00'.68 E
Aus 539 [537/2009]		
Insert	magenta limits, with legend <i>Aus 668</i> in NW corner, between	3° 39'.97 S 152° 23'.30 E 3° 34'.26 S 152° 23'.30 E 3° 34'.26 S 152° 32'.13 E 3° 39'.97 S 152° 32'.13 E
Delete	magenta limits, with legend <i>Aus 668</i> , centred on	3° 38'.0 S 152° 26'.0 E
Aus 545 [414/2010]		
Insert	magenta limits, with legend <i>Aus 668</i> in SW corner, between	3° 34'.26 S 152° 24'.90 E 3° 34'.26 S 152° 23'.30 E 3° 41'.00 S 152° 23'.30 E 3° 41'.00 S 152° 24'.90 E
Delete	magenta limits, with legend <i>Aus 668</i> , centred on	3° 38'.0 S 152° 24'.5 E

1163* PAPUA NEW GUINEA - Nabuto Bay to Cape Hapag - Chart limits (continued)**Aus 554 [950/2010]**

Insert	magenta limits, with legend <i>Aus 668</i> in SW corner, between	4° 39'.50 S 4° 39'.50 S 4° 52'.98 S 4° 52'.98 S	152° 56'.00 E 152° 43'.00 E 152° 43'.00 E 152° 56'.00 E
Delete	magenta limits, with legend <i>Aus 668</i> , centred on	4° 45'.0 S	152° 50'.0 E

1164* AUSTRALIA - QUEENSLAND - Karumba - Depths; infrastructure

Port of Brisbane Corporation (DHDB 381714)

Aus 6 [1055/2010]

Insert	accompanying block accompanying block	17° 29'.0 S 17° 26'.5 S	140° 50'.0 E 140° 45'.5 E
Amend	legend to <i>Dir 264.5°</i>	17° 26'.55 S	140° 46'.60 E

Aus 6 (plan, Karumba)

Insert	accompanying block	17° 29'.0 S	140° 50'.0 E
--------	--------------------	-------------	--------------

1165* AUSTRALIA - NORTHERN TERRITORY - Cape Stewart to Cuthbert Point - Chart limits; legend

Australian Hydrographic Service (AA500062)

Aus 442 [1421/2009]

Insert	magenta limits, with legend <i>Aus 718</i> in NE corner, between	10° 36'.00 S 10° 36'.00 S 12° 08'.60 S 12° 08'.60 S 10° 36'.00 S	134° 46'.60 E 133° 47'.20 E 133° 47'.20 E 134° 46'.60 E 134° 46'.60 E
--------	---	--	---

Aus717 [824/2009]

Insert	magenta legend, <i>Adjoining Chart Aus 718</i> in W border	11° 22'.5 S	134° 35'.7 E
--------	---	-------------	--------------

1166* EAST TIMOR - Pulau Jaco - Light removed

Former Notice - 309(T)/2005 is cancelled
 Indonesian Hydro-Oceanographic Office (AA497939)

Aus 311 [1123/2008]			
Delete	light	8° 25'.3 S	127° 20'.2 E
Aus 312 [365/2009]			
Delete	light	8° 25'.3 S	127° 20'.2 E
Aus 313 [254/2010]			
Delete	light	8° 25'.3 S	127° 20'.2 E
Aus 4721 (INT 721) [1113/2010]			
Delete	light	8° 25'.3 S	127° 20'.2 E
AX 0311F [NC 26/9/2008]			
Delete	light	8° 25'.3 S	127° 20'.2 E
AX 0312F [365/2009]			
Delete	light	8° 25'.3 S	127° 20'.2 E
AX 4721F [1113/2010]			
Delete	light	8° 25'.3 S	127° 20'.2 E

1167* AUSTRALIA - NORTHERN TERRITORY - Peron Island North to Peron Island South - Nomenclature; tidal panel

Australian Hydrographic Service (AA500070)

Aus 316 [NE 2/7/2010]			
Amend	name to <i>Peron Island North</i>	15° 20'.5 S	128° 42'.0 E
Aus 724 [414/2009]			
Amend	name to <i>Peron Island North</i>	13° 10'.0 S	130° 03'.0 E
	name to <i>Peron Island South</i>	13° 12'.5 S	130° 05'.6 E
	name to <i>Peron Island Nth</i>	14° 01'.6 S	130° 01'.0 E

1168* AUSTRALIA - WESTERN AUSTRALIA - Port Hedland - Infrastructure

Port Hedland Port Authority, BHP Billiton (AA495418 - AA495422)

Aus 52 [NE 18/6/2010]			
Insert	accompanying block	20° 19'.0 S	118° 34'.2 E
Aus 53 [NE 18/6/2010]			
Insert	accompanying block	20° 19'.5 S	118° 34'.5 E

1169* AUSTRALIA - WESTERN AUSTRALIA - Dampier - Channel; nav aids; pipeline

Former Notices - 218(T)/2008, 137(P)/2010, 628(P)/2010 are cancelled
Dampier Port Authority (AA500309 - AA500313)

Aus 59 (plan, Withnell Bay to King Bay) [1059/2010]

Insert	accompanying block	20° 36'.0 S	116° 44'.5 E
	dashed line, between	20° 35'.100 S	116° 44'.121 E
		20° 34'.151 S	116° 43'.300 E
	dashed line, between	20° 35'.100 S	116° 43'.933 E
		20° 34'.369 S	116° 43'.300 E
	continuous line, between	20° 35'.100 S	116° 44'.030 E
		20° 34'.257 S	116° 43'.300 E
	supply pipeline, between	20° 35'.100 S	116° 44'.663 E
		20° 34'.975 S	116° 44'.701 E
		20° 33'.567 S	116° 45'.365 E
	anchoring prohibited limit, between	20° 36'.633 S	116° 44'.902 E
		20° 36'.901 S	116° 45'.144 E
	anchoring prohibited limit, between	20° 35'.100 S	116° 44'.121 E
		20° 35'.042 S	116° 44'.129 E
		20° 34'.978 S	116° 44'.142 E
		20° 34'.916 S	116° 44'.157 E
		20° 34'.862 S	116° 44'.173 E
		20° 34'.780 S	116° 44'.202 E
		20° 33'.567 S	116° 44'.783 E
	anchorage area limit, between	20° 35'.100 S	116° 43'.738 E
		20° 34'.624 S	116° 43'.300 E
	starboard lateral light beacon, <i>Fl.G.3s P11</i> , with topmark	20° 34'.530 S	116° 43'.440 E
	port lateral light beacon, <i>Fl.R.3s P12</i> , with topmark	20° 34'.450 S	116° 43'.550 E
Delete	anchoring prohibited limit, between	20° 34'.83 S	116° 45'.70 E
		20° 33'.57 S	116° 45'.37 E
	depth, 9 ₄ m	20° 34'.43 S	116° 43'.37 E
	depth, 8 ₆ m	20° 34'.57 S	116° 43'.53 E
	depth, 6 ₉ m	20° 34'.67 S	116° 43'.70 E
	depth, 7 ₉ m	20° 34'.96 S	116° 43'.98 E

1170* AUSTRALIA - WESTERN AUSTRALIA - Exmouth Gulf - Mooring buoy established

MetOcean Engineers (AA499909, AA499910)

Aus 744 [909/2010]

Insert	yellow conical mooring buoy	22° 03'.85 S	114° 06'.70 E
--------	-----------------------------	--------------	---------------

Aus 745 [910/2010]

Insert	yellow conical mooring buoy	22° 03'.85 S	114° 06'.70 E
--------	-----------------------------	--------------	---------------

1171* AUSTRALIA - WESTERN AUSTRALIA - Fremantle - Blackwall Reach - Mooring buoy

Fremantle Sailing Club (AA429675, AA429682, AA429683)

Aus 112 [1115/2010]

Insert	yellow conical mooring buoy	32° 01'.104 S	115° 47'.097 E
--------	-----------------------------	---------------	----------------

AX 63112 [1115/2010]

Insert	yellow conical mooring buoy	32° 01'.104 S	115° 47'.097 E
--------	-----------------------------	---------------	----------------

1172* AUSTRALIA - WESTERN AUSTRALIA - Albany - Light buoys altered
Albany Port Authority (AA499407)

Aus 109 [912/2010]

Amend	light buoy to Q.G No1	35° 01'.85 S	117° 56'.61 E
	light buoy to Q.R No2	35° 01'.94 S	117° 56'.65 E

Aus 110 [310/2009]

Amend	light buoy to Q.G No1	35° 01'.92 S	117° 56'.52 E
	light buoy to Q.R No2	35° 02'.00 S	117° 56'.56 E

Aus 118 [795/2010]

Amend	light buoy to Q.G No1	35° 01'.8 S	117° 56'.6 E
	light buoy to Q.R No2	35° 01'.9 S	117° 56'.7 E

AX 0110E [NC 19/6/2009]

Insert	light buoy to Q.G No1	35° 01'.92 S	117° 56'.52 E
	light buoy to Q.R No2	35° 02'.00 S	117° 56'.56 E

AX 0118E [795/2010]

Amend	light buoy to Q.G No1	35° 01'.8 S	117° 56'.6 E
	light buoy to Q.R No2	35° 01'.9 S	117° 56'.7 E

1173* AUSTRALIA - SOUTH AUSTRALIA - Port Lincoln - Porter Bay - Beacon established
Department for Transport, Energy and Infrastructure SA (AA498812, AA498814)

Aus 134 [427/2010]

Insert	port lateral beacon, with topmark	34° 44'.73 S	135° 53'.38 E
--------	-----------------------------------	--------------	---------------

1174* AUSTRALIA - SOUTH AUSTRALIA - Troubridge Shoals to North Haven - Nav aids
Department of Transport, Energy and Infrastructure SA (AA498871, AA498872), UKHO (AA499994)

Aus 139 (plan, Macdonnell Sound) [1062/2010]

Insert	structure colour BY	35° 05'.97 S	137° 47'.81 E
--------	---------------------	--------------	---------------

Aus 780 [NC 8/10/2010]

Insert	structure colour BY	35° 06'.0 S	137° 47'.8 E
--------	---------------------	-------------	--------------

Aus 781 [NE 8/10/2010]

Insert	structure colour BY	35° 06'.0 S	137° 47'.8 E
--------	---------------------	-------------	--------------

Amend	light to Fl.G.2s	34° 47'.7 S	138° 28'.9 E
-------	------------------	-------------	--------------

1175* AUSTRALIA - SOUTH AUSTRALIA - Barker Inlet - Depths
Former Notices - 830(T)/2008, 236(T)/2010 are cancelled
HydroSurvey Australia (DHDB 1599818)

Aus 130 [701/2010]

Insert	accompanying block	34° 44'.5 S	138° 30'.0 E
--------	--------------------	-------------	--------------

1176* AUSTRALIA - SOUTH AUSTRALIA - Port Stanvac - Pipelines

Former Notice - 572(T)/2009 is cancelled

Department for Transport, Energy and Infrastructure SA (AA499906, AA499907)

Aus125 (plan, Port Stanvac) [1063/2010]

Insert	outfall pipeline, between	35° 07'.603 S	138° 28'.036 E
		35° 07'.634 S	138° 27'.664 E
	outfall pipeline, between	35° 07'.655 S	138° 28'.049 E
		35° 07'.668 S	138° 27'.852 E
Delete	pipeline, between	35° 07'.71 S	138° 28'.06 E
		35° 07'.85 S	138° 27'.71 E

1177* AUSTRALIA - TASMANIA - D'Entrecasteaux Channel - Helliwells Point - Historic wreck

Australian Hydrographic Service (AA498789)

Aus 173 [956/2010]

Insert	stranded wreck, with magenta legend <i>Historic Wk</i> (see Note)	43° 08'.98 S	147° 14'.80 E
	accompanying note	43° 06'.0 S	147° 12'.0 E

Aus 795 [600/2010]

Insert	stranded wreck, with magenta legend <i>Historic Wk</i> (see Note)	43° 08'.98 S	147° 14'.80 E
	accompanying note	43° 20'.5 S	146° 40'.0 E

1178* AUSTRALIA - VICTORIA - Barwon Heads - Wrecks southwards

Australian Hydrographic Service (AA499508)

Aus 143 [752/2010]

Insert	safe clearance depth, 40m, enclosed by danger circle with legend, <i>Wk</i>	38° 20'.70 S	144° 29'.21 E
	historic wreck, with magenta legend <i>Historic Wk</i> (see Note)	38° 23'.06 S	144° 36'.46 E
Delete	historic wreck	38° 20'.8 S	144° 28'.6 E

Aus 349 [NC 30/7/2010]

Substitute	safe clearance depth, 40m, enclosed by danger circle with legend, <i>Wk</i> , for wreck	38° 20'.7 S	144° 29'.2 E
------------	--	-------------	--------------

Aus 788 [799/2010]

Insert	safe clearance depth, 40m, enclosed by danger circle with legend, <i>Wk</i>	38° 20'.70 S	144° 29'.21 E
	historic wreck, with magenta legend <i>Historic Wk</i> (see Note)	38° 23'.06 S	144° 36'.46 E
Delete	historic wreck	38° 20'.8 S	144° 28'.6 E

1179* AUSTRALIA - VICTORIA - Point Richards - Light beacon established

Former Notice - 981(P)/2010 is cancelled

Parks Victoria (AA494775, AA494776)

Aus 157 [1004/2010]

Insert	port lateral light beacon, <i>Fl.R.2s</i> , with topmark	38° 06'.496 S	144° 37'.625 E
--------	--	---------------	----------------

1180* AUSTRALIA - VICTORIA - Port Phillip - Sandringham - Yorkies Rock - Light buoy established
Victorian Notice 102/2010 (AA498780)

Aus 155 [845/2010]

Insert isolated danger conical light buoy, *Fl(2)10s*, with
topmark

37° 57'.134 S 144° 59'.684 E

1181(T)/2010 AUSTRALIA - NEW SOUTH WALES - Newcastle - Depth information

Former Notice - 708(T)/2010 is cancelled

Newcastle Port Corporation (AA501445)

Available depths as at 3 November 2010:

<i>Berth</i>	<i>Metres</i>
* Western Basin 3	11.6
Western Basin 4	11.4
Eastern Basin 1	11.6
Eastern Basin 2 North of Ch 450	11.6
* Eastern Basin 2 South of Ch 450	11.3
Dockyard 2 (Dredge)	4.0
Channel Berth	8.3
Dyke 1	12.8
Dyke 2	12.8
* Dyke 4	16.3
* Dyke 5	16.3
Dyke 6	6.3
* Mayfield 4 Ch 27 to 266	12.5
* BHP Wharf 6 to Ch 1050	7.5
Kooragang 2	11.6
Kooragang 2 North Dolphin Ch 182 to 228	11.1
Kooragang 2 South Dolphin Ch -92 to 00	10.9
Kooragang 3	13.3
Kooragang 4	16.5
Kooragang 5	16.3
Kooragang 6	16.5
Kooragang 8	15.3
Kooragang 9	15.5
Kooragang Ship Reveal KSR	8.0
Throsby 1	9.3
Carrington wharf	To be sounded as and when required
Foreshore Park Berth	6.5
Elgo wharf	To be sounded as and when required
<i>Channels</i>	
Entrance Approach	17.7
Entrance Channel (18.0m)	18.0
Entrance Channel (17.4m)	17.4
Entrance Channel (16.8m)	16.8
Entrance Channel (16.2m)	16.1
Entrance Channel to Horseshoe	15.2
Horseshoe	15.0
Steelworks Channel to Swinging Basin	15.0
Swinging Basin	15.0
Swinging Basin to Mayfield 4	12.8
* Hunter River South Arm (Kooragang 6 to Kooragang 9)	15.0
Basin Cutting	12.7
Basin Area to Eastern & Western Basin Berths	12.3
Basin Area to 1 Throsby	10.0
Stockton Crossing	3.6
* Indicates revised entry.	

Chart temporarily affected - Aus 207 - Aus 208

1182(T)/2010 AUSTRALIA - QUEENSLAND - Moreton Bay - Brisbane River - Depth information and under keel clearances
 Former Notice - 1009(T)/2010 is cancelled
 Port of Brisbane Corporation (AA500612)

Available depths and under keel clearances (UKC) at 28 October 2010:

<i>Berth</i>	<i>Metres</i>	<i>Remarks</i>
Fisherman Islands No10	14.2	
Fisherman Islands No9	14.1	
* Fisherman Islands No8	14.1	
* Fisherman Islands No7	14.1	
* Fisherman Islands No6	14.0	
Fisherman Islands No5	14.0	
Fisherman Islands No4	14.0	
Fisherman Islands No3	14.0	
* Fisherman Islands No2	14.1	
Fisherman Islands No1	14.1	
Fisherman Islands Grain and Woodchip	13.1	
Caltex Fisherman Islands	14.3	
* BP Luggage Point	14.3	
Fisherman Islands Coal	13.5	
* Fisherman Islands General Purpose	11.6	
Caltex Products	10.0	
* Cement Australia Co Wharf	9.8	
BP Products	10.9	
* Shell	11.1	
Pacific Terminals	10.2	
Incitec North	10.2	
* Incitec South	10.3	
Pinkenba 1	10.5	
Pinkenba 2	10.5	
Riverside Marina	5.0	
Sugar Terminal	9.7	
Cairncross Fitting Out Wharf	6.6	
Cairncross Breasting Wharf	6.5	
* Brisbane Naval Wharf	4.4	
Maritime No3	6.5	(not maintained)
* Maritime No2	9.9	
* Maritime No1	9.2	
Hamilton No4	10.3	
* Hamilton No1	9.3	
* Brisbane Cruise Ship Terminal	9.3	
	<i>Metres</i>	<i>UKC/Remarks</i>
<i>Moreton Bay:</i>		
North East Channel	5.5	1.5
North West Channel	15.0	2.3 (280m width)
North West Bypass Channel	9.2	1.6
Spitfire Channel	15.0	1.5 (600m width)
East Knoll Bypass Channel	6.9	1.4
East Channel	15.0	1.5 (300m width from western side)
Main Channel (M8 - M9)	10.0	1.8
Entrance Channel (E5 – EBCN)	14.7	1.5
<i>Brisbane River:</i>		
Entrance Beacons and Bar Cutting	14.0	1.46
Fisherman Islands Swing Basin	14.0	1.30
Pelican Banks Reach to Hamilton Reach	9.1	0.6 - 0.9

*Indicates new or revised entry.

Chart temporarily affected - Aus 235 - Aus 236 - Aus 237 - Aus 238 - AU5237X8

1183(T)/2010 AUSTRALIA - QUEENSLAND - Moreton Bay - Pelican Banks - Wreck; light buoy established*Former Notice* - 374(T)/2010 is cancelled

Maritime Safety Queensland Notice 940(T)/2010 (AA500783)

A stranded wreck exists in position 27° 34'.59 S 153° 24'.24 E; a port lateral light buoy, *Fl.R.2-5s*, exists in position 27° 34'.57 S 153° 24'.27 E.

Chart temporarily affected - Aus 236**1184(T)/2010 AUSTRALIA - QUEENSLAND - Moreton Bay - Green Island - Light beacon re-established***Former Notice* - 315(T)/2010 is cancelled

Maritime Safety Queensland (AA501535)

Cancel this notice on receipt.

Chart formerly affected - Aus 236 - AU428153**1185(T)/2010 AUSTRALIA - QUEENSLAND - Brisbane River - Kangaroo Point - Harbour works completed***Former Notice* - 1377(T)/2009 is cancelled

Maritime Safety Queensland Notice 792(T)/2009 (AA442272)

Cancel this notice on receipt.

Chart formerly affected - Aus 238 - AU5237X8**1186(T)/2010 AUSTRALIA - QUEENSLAND - Gladstone - South Passage Island to Kangaroo Island - Scientific instruments***Date* - Until 30 November 2010

Maritime Safety Queensland Notice 939(T)/2010 (AA500782)

Subsurface scientific instruments exist in positions:

23° 47'.24 S 151° 12'.06 E

23° 45'.85 S 151° 10'.84 E

23° 44'.80 S 151° 09'.72 E.

Chart temporarily affected - Aus 245 - Aus 819 - AU424151 - AU5244X5**1187(T)/2010 AUSTRALIA - QUEENSLAND - Schooner Rock - Light beacon destroyed; light buoy established***Former Notice* - 319(T)/2010 is cancelled

Maritime Safety Queensland Notice 925(T)/2010 (AA500697)

The north cardinal light beacon (20° 54'.04 S 149° 25'.91 E) has been destroyed; a north cardinal light buoy, *Q*, exists in situ.

Chart temporarily affected - Aus 251 - Aus 824**1188(T)/2010 AUSTRALIA - QUEENSLAND - Io Reef - Light beacon destroyed; light buoy established***Former Notice* - 382(T)/2010 is cancelled

Maritime Safety Queensland Notice 932(T)/2010 (AA500605)

The west cardinal light beacon (20° 41'.58 S 149° 07'.70 E) has been destroyed; a west cardinal light buoy, *Q(9)15s*, exists in situ.

Chart temporarily affected - Aus 251 - Aus 252 - Aus 824

1189(T)/2010 AUSTRALIA - QUEENSLAND - Whitsunday Group - Shaw Island - Platypus Rock - Light beacon destroyed; light buoy established

Former Notice - 511(T)/2010 is cancelled
Maritime Safety Queensland Notice 926(T)/2010 (AA500696)

The west cardinal light beacon (20° 31'.23 S 149° 02'.31 E) has been destroyed; a west cardinal light buoy, VQ(9)10s, exists in situ.

Chart temporarily affected - Aus 252 - Aus 254 - Aus 824

1190(T)/2010 AUSTRALIA - QUEENSLAND - Whitsundays - Spitfire Rock - Light beacon destroyed; light buoy established

Former Notice - 383(T)/2010 is cancelled
Maritime Safety Queensland Notice 930(T)/2010 (AA500617)

The west cardinal light beacon (20° 28'.59 S 149° 01'.70 E) has been destroyed; a west cardinal light buoy, Q(9)15s, exists in situ.

Chart temporarily affected - Aus 252 - Aus 254 - Aus 824

1191(T)/2010 AUSTRALIA - QUEENSLAND - Surprise Rock - Light beacon destroyed; light buoy established

Former Notice - 329(T)/2009 is cancelled
Maritime Safety Queensland Notice 929(T)/2010 (AA500615)

The isolated danger light beacon (20° 21'.3S 149° 01'.6 E) has been destroyed; an isolated danger light buoy, FI(2)6s, exists in situ.

Chart temporarily affected - Aus 252 - Aus 253 - Aus 824

1192(T)/2010 AUSTRALIA - QUEENSLAND - Whitsunday Island - Whitehaven Beach - Light beacon destroyed; light buoy established

Former Notice - 323(T)/2010 is cancelled
Maritime Safety Queensland Notice 933(T)/2010 (AA500602)

The north cardinal light beacon (20° 17'.53 S 149° 03'.35 E) has been destroyed; a north cardinal light buoy, Q, exists in situ.

Chart temporarily affected - Aus 252 - Aus 253

1193(T)/2010 AUSTRALIA - QUEENSLAND - Whitsunday Island - Reef Point - Light beacon destroyed; light buoy established

Former Notice - 446(T)/2010 is cancelled
Maritime Safety Queensland Notice 927(T)/2010 (AA500700)

The port lateral light beacon (20° 17'.45 S 148° 54'.71 E) has been destroyed; a port lateral light buoy, FI.R.2-5s, exists in situ.

Chart temporarily affected - Aus 252 - Aus 253 - Aus 254

1194(T)/2010 AUSTRALIA - QUEENSLAND - Macona Inlet - Light beacon destroyed; light buoy established

Former Notice - 1131(T)/2010 is cancelled
Maritime Safety Queensland Notice 923(T)/2010 (AA500702)

The starboard lateral light beacon (20° 10'.29 S 148° 55'.10 E) has been destroyed; a starboard lateral light buoy, FI.G.2-5s, exists in situ.

Chart temporarily affected - Aus 252

1195(T)/2010 AUSTRALIA - QUEENSLAND - Hook Island - Nara Inlet - Light beacon destroyed; light buoy established

Former Notice - 512(T)/2010 is cancelled

Maritime Safety Queensland Notice 924(T)/2010 (AA500701)

The light beacon (20° 09'.81 S 148° 54'.04 E) has been destroyed; a port lateral light buoy, *Fl.R.2-5s*, exists in situ.

Chart temporarily affected - Aus 252**1196(T)/2010 AUSTRALIA - QUEENSLAND - Yorkeys Knob - Wreck**

Maritime Safety Queensland Notice 915(T)/2010 (AA500734)

A wreck exists in position 16° 47'.26 S 145° 43'.70 E.

Chart temporarily affected - Aus 262 - Aus 830 - AX 6027S - AX 63262 - AU417145 - AU5262X4**1197(T)/2010 AUSTRALIA - QUEENSLAND - Hinchinbrook Channel - Cardwell - Wreck**

Maritime Safety Queensland Notice 945(T)/2010 (AA501575)

A wreck exists in position 18° 14'.72 S 146° 01'.66 E.

Mariners are advised to navigate with caution in the area.

Chart temporarily affected - Aus 259 - Aus 828**1198(T)/2010 AUSTRALIA - QUEENSLAND - Prince of Wales Channel - Herald Patches - AIS trial**

Date - Until 30 June 2011

Australian Maritime Safety Authority ATH 8/2010 (AA500893, AA501167, AA501443)

A project to verify the ability of the mariner to view and effectively use AIS as an aid to navigation is underway.

An AIS unit (MMSI: 995031022) has been attached to Herald Patches light buoy (10° 30'.2 S 142° 21'.5 E (WGS84 datum)) in Torres Strait.

The AIS unit will provide information such as identity (MMSI and name), type of mark (lateral, starboard hand floating aid), positional accuracy and time of last update.

Chart temporarily affected - Aus 292 - Aus 293**1199(T)/2010 AUSTRALIA - TIMOR SEA - Seismic survey completed**

Former Notice - 1083(T)/2010 is cancelled

Murphy Oil Corporation (AA501536)

Cancel this notice on receipt.

Chart formerly affected - Aus 309 - Aus 315 - AX 0309F - AX 0315F - AX 72309 - AU312127 - AU312128 - AU313127 - AU313128**1200(T)/2010 AUSTRALIA - WESTERN AUSTRALIA - Sahul Banks - Seismic survey**

Date - Until 10 December 2010

Tata Petrodyne Ltd (AA500692, AA500693, AA501399)

MV *Pacific Explorer* with a 6000m towed array is conducting a survey in an area bounded by the following positions:

11° 57'.15 S 124° 19'.65 E

12° 03'.36 S 124° 26'.09 E

11° 51'.19 S 124° 35'.31 E

11° 44'.94 S 124° 28'.90 E.

Chart temporarily affected - Aus 314 - AX 0314F - AU312124

1201(T)/2010 AUSTRALIA - WESTERN AUSTRALIA - Heywood Shoal - Seismic survey westwards

Former Notice - 1084(T)/2010 is cancelled

Total E&P Australia (AA497075, AA497076, AA497078)

Cancel this notice on receipt.

Chart formerly affected - Aus 319 - Aus 322 - AX 0319F - AX 0322F - AU314122 - AU314123

1202(T)/2010 AUSTRALIA - WESTERN AUSTRALIA - Browse Island - Scientific instruments recovered northwestwards

Former Notice - 626(T)/2010 is cancelled

MetOcean Engineers (AA501635, AA501641)

Cancel this notice on receipt.

Chart formerly affected - Aus 319 - Aus 320 - AX 0319F - AU314123

1203(T)/2010 AUSTRALIA - WESTERN AUSTRALIA - Scott Reef to James Price Point - Mooring buoys recovered

Former Notice - 1029(T)/2010 is cancelled

Peter Slape (AA501450)

Cancel this notice on receipt.

Chart formerly affected - Aus 324 - AU418122

1204(T)/2010 AUSTRALIA - WESTERN AUSTRALIA - James Price Point - Scientific instruments

Date - Until 1 November 2011

Department of Transport WA Notice 116/2010 (AA561400)

Scientific instruments marked by unlit special buoys exist within a 10000m radius of James Prices Point (17° 29'21 S 122° 08'56 E).

Mariners are not to use these buoys as moorings.

Chart temporarily affected - Aus 324

1205(T)/2010 AUSTRALIA - WESTERN AUSTRALIA - Port Hedland - Light removed

Former Notice - 677(T)/2009 is cancelled

Port Hedland Port Authority (AA500742)

Cancel this notice on receipt.

Chart formerly affected - Aus 54 - AU5XXX54

1206(T)/2010 AUSTRALIA - WESTERN AUSTRALIA - Dampier Archipelago - Light unlit northwestwards

Date - Until 17 December 2010

Transfield Worley (AA499397)

North Rankin A light (19° 35'.05 S 116° 08'.22 E (WGS84 datum)) is unlit.

Chart temporarily affected - Aus 327 - Aus 4723

1207(T)/2010 AUSTRALIA - WESTERN AUSTRALIA - Dampier Archipelago - Seismic survey northwestwards*Date* - Until 15 March 2011

Fugro Multi Client Services Pty Ltd (AA501545)

MV *Geo Celtic*, with a 6600m towed array and support vessel MV *Cassandra VI* are conducting a survey in the area bounded by the following positions (WGS84 datum):

18° 47'.70 S 116° 50'.08 E
 19° 14'.92 S 116° 50'.08 E
 19° 14'.92 S 116° 15'.08 E
 19° 19'.92 S 116° 15'.08 E
 19° 19'.92 S 116° 09'.10 E
 19° 24'.92 S 116° 09'.10 E
 19° 24'.92 S 115° 55'.08 E
 18° 47'.70 S 115° 55'.08 E.

Chart temporarily affected - Aus 327 - Aus 741**1208(T)/2010 AUSTRALIA - WESTERN AUSTRALIA - Rankin Bank - Scientific instruments recovered***Former Notice* - 334(T)/2010 is cancelled

MetOcean Engineers (AA501635, AA501641)

Cancel this notice on receipt.

Chart formerly affected - Aus 327 - Aus 328 - AU320115**1209(T)/2010 AUSTRALIA - WESTERN AUSTRALIA - Montebello Islands - Scientific instruments northwards***Date* - Until 30 September 2011

MetOcean Engineers (AA501635, AA501641)

Scientific instruments marked by lit buoys, *Fl(5)Y.20s*, exist in positions 19° 45'.34 S 115° 47'.88 E and 19° 56'.68 S 115° 32'.73 E.

Chart temporarily affected - Aus 327 - Aus 328**1210(T)/2010 AUSTRALIA - WESTERN AUSTRALIA - Rottneest Island - Scientific instruments***Date* - Until 25 November 2010

Defence Science and Technology Organisation (AA498431)

Scientific instruments marked by special light buoys, *Fl.5s*, exist in positions:

31° 53'.5 S 115° 24'.0 E
 31° 56'.0 S 115° 22'.0 E
 31° 59'.0 S 115° 23'.0 E
 31° 55'.0 S 115° 18'.5 E.

Chart temporarily affected - Aus 334 - Aus 754 - AX 0334E - AX 0754E - AX 66002 - AU432115**1211(T)/2010 AUSTRALIA - SOUTH AUSTRALIA - Port Augusta - Navaid replacement***Date* - Until 30 November 2010

Department for Transport, Energy and Infrastructure SA Notice 45/2010 (AA501512)

Works are in progress to replace 39 nav aids between beacon No17 (32° 34'.07 S 137° 45'.86 E) and Commonwealth Wharf (32° 29'.38 S 137° 45'.63 E).

All vessels involved in the works will display appropriate lights and symbols.

Mariners are advised to navigate with caution in the area.

Chart temporarily affected - Aus 778

1212(T)/2010 AUSTRALIA - SOUTH AUSTRALIA - Port Stanvac - Scientific instrument

Former Notice - 879(T)/2010 is cancelled

Date - Until 1 October 2011

South Australian Research and Development Institute (AA500707)

Subsurface scientific instruments exist in positions (WGS84 datum):

35° 05'.61 S 138° 28'.26 E

35° 05'.56 S 138° 28'.39 E

35° 05'.49 S 138° 28'.31 E.

Chart temporarily affected - Aus 125 - Aus 781**1213(T)/2010 AUSTRALIA - VICTORIA - Buttress Point to Antares Rock - Seismic survey**

Date - Until 15 December 2010

Origin Energy (AA501723), Victorian Notice 115(T)/2010 (AA501479)

SSV *Katmandu*, *Prowler* and *Blackjack* are conducting a survey in an area bounded by the following positions:

38° 30'.71 S 142° 42'.16 E

38° 32'.25 S 142° 40'.81 E

38° 34'.98 S 142° 45'.83 E

38° 33'.84 S 142° 46'.84 E.

SSV *Katmandu* can be contacted on VHF Ch 16.

Chart temporarily affected - Aus 349 - Aus 787 - AU439142**1214(T)/2010 AUSTRALIA - TASMANIA - Port Dalrymple - Scientific instruments recovered**

Former Notice - 817(T)/2010 is cancelled

MetOcean Engineers (AA501635, AA501641)

Cancel this notice on receipt.

Chart formerly affected - Aus 167 - Aus 799 - AU442146 - AU5167X8**1215(P)/2010 AUSTRALIA - VICTORIA - Port Phillip - Corio Bay - Light beacon to be established**

Date - On or about 30 November 2010

Victorian Notice 109(T)/2010 (AA500717)

A south cardinal light beacon, *Q(6)+LFl. 15s*, will be established in position 38° 08'.13 S 144° 30'.11 E; the beacon exists with a temporary special topmark.

Chart which will be affected - Aus 157**1216(T)/2010 AUSTRALIA - VICTORIA - Port Phillip - Mornington - Dredging operations**

Date - Until 24 November 2010

Victorian Notice 113(T)/2010 (AA500688)

Dredging operations are in progress in the vicinity of 38° 12'.83 S 145° 02'.07 E.

All hazards to navigation will display appropriate lights and symbols.

Mariners are advised to navigate with caution in the area.

Chart temporarily affected - Aus 143 - Aus 158 - AU5143P3

1217(T)/2010 AUSTRALIA - VICTORIA - Western Port - West Head - Light buoy off station
West Head Gunnery Range (AA501498)

The special light buoy (38° 31'.1 S 145° 01'.0 E) is off station.

Chart temporarily affected - Aus 150 - Aus 801 - AU439145

1218(T)/2010 AUSTRALIA - VICTORIA - Western Port - Tankerton - Dredging operations
Date - Until 23 November 2010
Victorian Notice 111(T)/2010 (AA500621)

Dredging operations are in progress in the vicinity of 38° 23'.00 S 145° 16'.23 E.

All hazards to navigation will display appropriate lights and symbols.

Mariners are advised to navigate with caution in the area.

Chart temporarily affected - Aus 150 - Aus 151 - AU439145

HYDROGRAPHIC REPORTS

<i>Locality</i>	<i>Report</i>	<i>Ship/Authority</i>	<i>Observer</i>
WA- Barrow Island	Waverider	<i>MV Mermaid Sentinel</i>	

NAVIGATION WARNINGS

The following radio messages have been received during the period to 5 November 2010. Signal copies of these messages may be destroyed. It is recommended that the reprint of Navigational Warnings should be kept in a file or a book divided into areas. Cancellation should be made on receipt of signals and reprints.

Rigs on location other than those listed in the latest Section III summary are the subject of Radio Navigational Warnings. Rigs in transit will not be the subject of Warnings.

AUSCOAST WARNING

- 259 Special purpose vessel *Ramform Explorer* conducting seismic survey in area bounded by 13° 26'·0 S to 14° 19'·0 S and 122° 58'·0 E to 123° 28'·0 E. 6M clearance requested.
- 260 Special purpose vessel *Southern Supporter* conducting seismic survey in area bounded by 19° 25'·00 S to 21° 26'·13 S and 112° 53'·00 E to 115° 32'·00 E. 2·5M clearance requested.
- 261 Cancelled.
- 262 Cancelled.
- 263 Cancelled.
- 264 Cancelled.
- 265 Cancelled.
- 266 Cancelled.
- 267 Cancelled.
- 268 Cancelled.
- 269 Lit mooring buoys in positions 20° 16'·3 S 113° 41'·0 E and 20° 16'·3 S 113° 41'·3 E. 1M clearance requested.
- 270 Cancelled.
- 271 North Reef light K3014 (23° 11'·10 S 151° 54'·18 E) nominal range reduced to 10M.
- 272 Drill rig *Nan Hai 6* in position 21° 26'·70 S 113° 58'·15 E. 2·5M clearance requested.
- 273 AIS aid to navigation MMSI 995031022 established on Herald Patches light buoy (10° 30'·2 S 142° 21'·5 E).
- 274 Special purpose vessel *Aquila Explorer* conducting seismic survey towing 4M cable in area bounded by 12° 30'·00 S to 16° 05'·00 S and 119° 15'·00 E to 124° 50'·00 E. 7M clearance requested.
- 275 Drill rig *Ocean Patriot* in position 38° 07'·02 S 148° 23'·01 E. 2·5M clearance requested.

NAVAREA X WARNINGS

- 009 As previously notified by NAVAREA warning, mariners using ECDIS are reminded not to rely solely on automated voyage planning and monitoring checks and alarms. Some ECDIS appear only to undertake route check functions on larger scale ENC's and therefore alarms might not activate. This may not be clearly indicated on the ECDIS display. Mariners should always undertake careful visual inspection of the entire planned route using the 'other / all' display mode to confirm that it, and any deviations from it, is clear of dangers.

Recent preliminary investigation indicates that some ECDIS may not display certain combinations of chart features and attributes correctly and on rare occasions may fail to display a navigationally significant feature. This appears to be caused by anomalous behaviour in some ECDIS software, especially early versions. The existence of such anomalies highlights the importance of maintaining ECDIS software to ensure that operational capability and reliability are maintained. It is recommended that appropriate checks are made with the equipment manufacturer. This is of particular importance where ECDIS is the only source of chart information available to the mariner

Further information will be made available through Notices to Mariners.

Navigational warnings in force as at 050001UTC NOV 10.**Auscoast**

220 231 239 241 247 248 249 253 257 259 260 269 271 272 273 274 275

Navarea X

009

Summary of mobile drilling rigs as at 050001UTC NOV 10.

<i>Name</i>	<i>Position</i>
Songa Venus	13° 04'.78 S 124° 27'.08 E
Ensco 109	20° 17'.23 S 116° 16'.31 E
Maersk Discoverer	19° 54'.80 S 115° 07'.90 E
Stena Clyde	20° 36'.50 S 114° 54'.40 E
Ocean America	19° 23'.59 S 114° 18'.43 E
Ocean Epoch	21° 34'.30 S 114° 09'.77 E
Jack Bates	20° 04'.24 S 113° 46'.46 E
Nan Hai 6	21° 26'.70 S 113° 58'.15 E
Ocean Patriot	38° 07'.02 S 148° 23'.01 E

NAVAREA XIV WARNINGS

036 Cancelled.
 037 Cancelled.
 038 South Pacific voluntary ship reporting system in the New Zealand search and rescue area south of 60°S. The New Zealand Search and Rescue Authorities have established a voluntary ship reporting system for all vessels operating in the NZSAR Region South of 60°South for the purposes of assisting the SAR authority in coordinating SAR operations in that area. Area covered: 60°S. to the southern edge of the Ross Sea bounded by 163°E to 131°W. All vessels are requested to notify Taupo Maritime Radio on entry and departure into the area and are also encouraged to make daily position reports. Information provided will be used for SAR purposes only. Taupo Maritime Radio can be contacted on Inmarsat C 582 451 200 067, HF, email maritime@kordia.co.nz or 00 64 4 914 8333.

Navarea XIV warnings in force as at 050001UTC NOV 10.

019 028 038

To accompany Australian Notice to Mariners 1177/2010

HISTORIC WRECK

The site of an historic wreck is protected from unauthorised interference. For details see Australian Seafarers Handbook AHP 20.

Note for chart Aus 173.

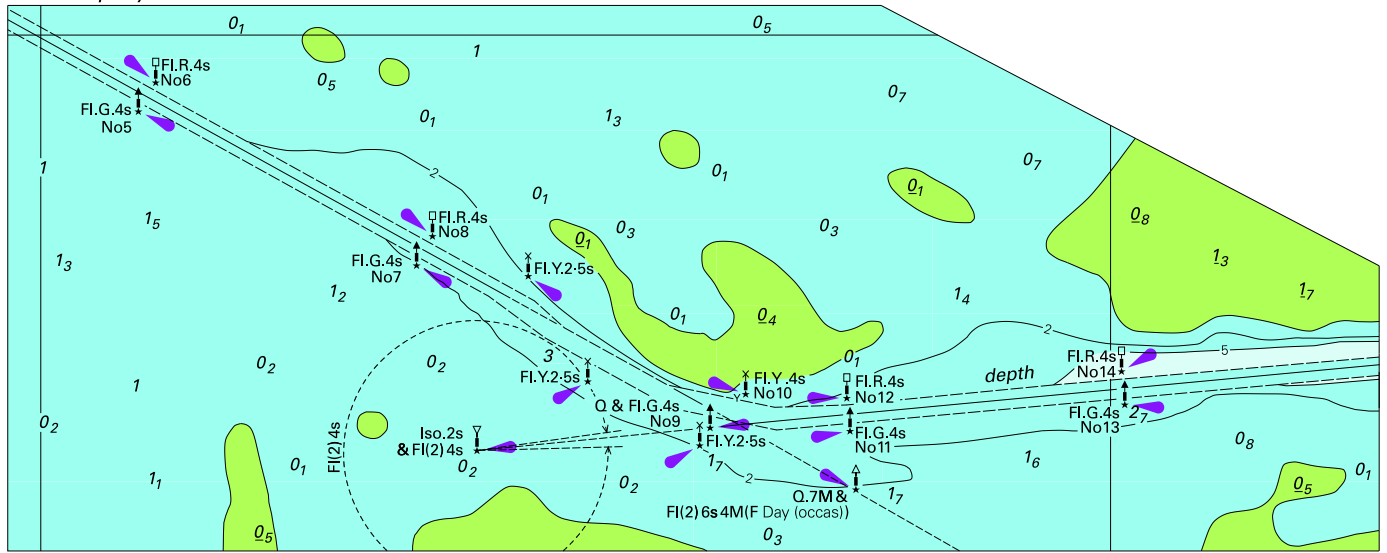
To accompany Australian Notice to Mariners 1177/2010

HISTORIC WRECK

The site of an historic wreck is protected from unauthorised interference. For details see Australian Seafarers Handbook AHP 20.

Note for chart Aus 795.

To accompany Australian Notice to Mariners 1164/2010

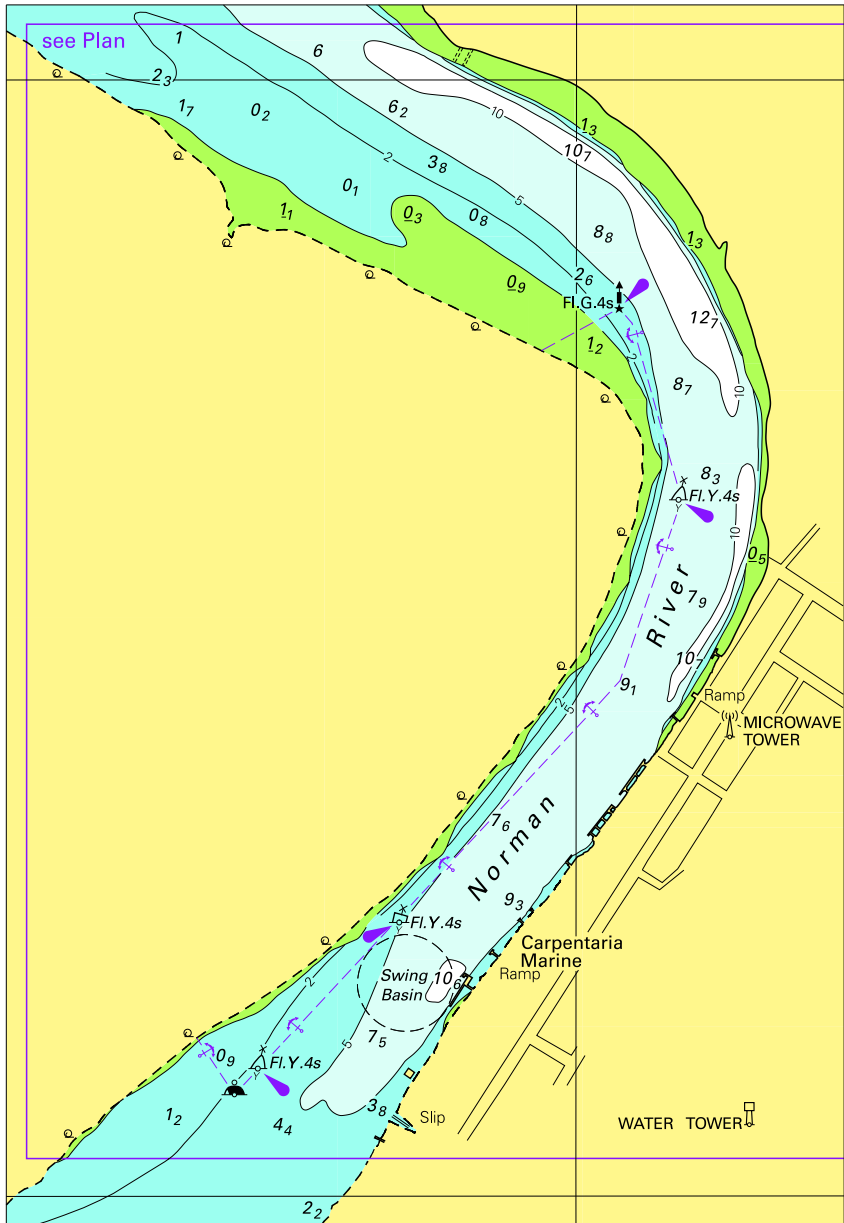


Block for chart Aus 6

©Commonwealth of Australia 2010

(72.1 x 181.4mm)

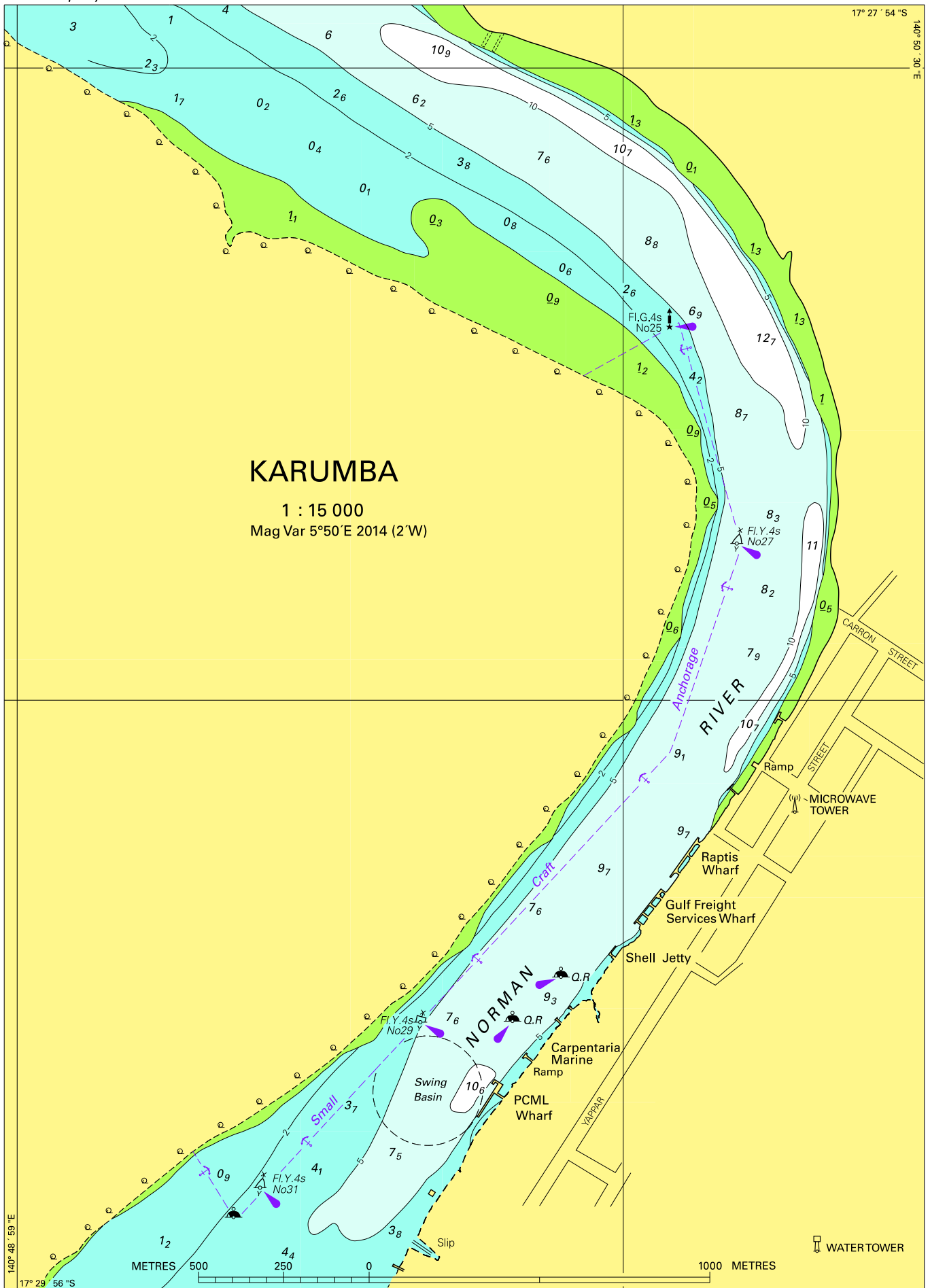
To accompany Australian Notice to Mariners 1164/2010



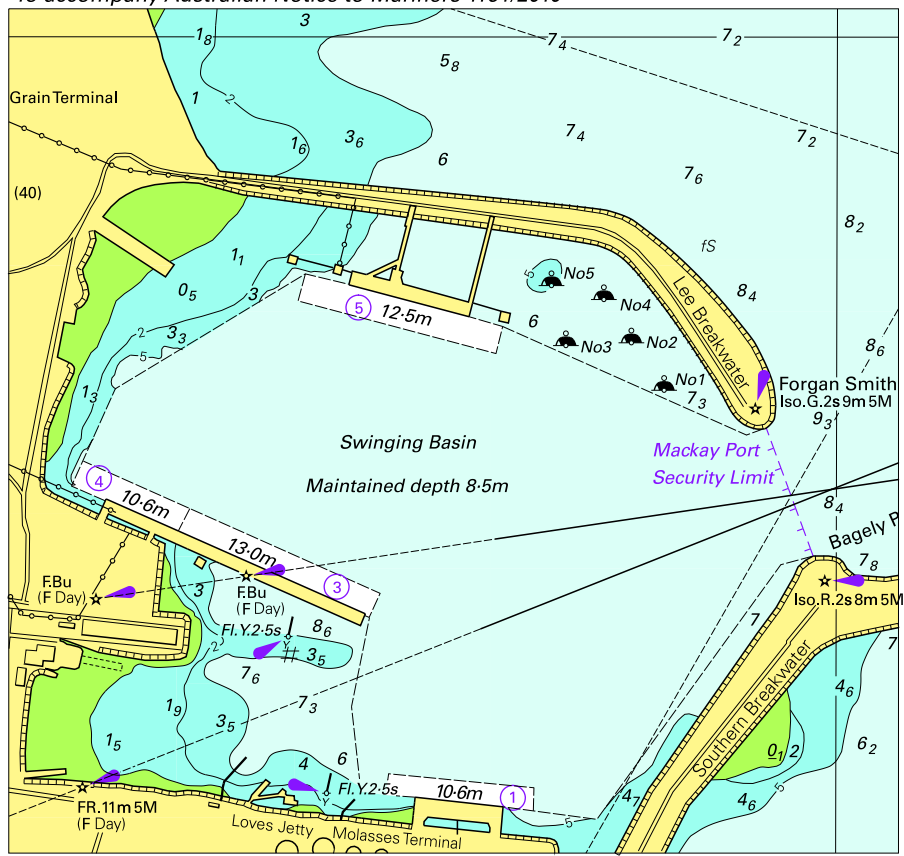
Block for chart Aus 6 ©Commonwealth of Australia 2010

(110.8 x 161.4mm)

To accompany Australian Notice to Mariners 1164/2010



To accompany Australian Notice to Mariners 1161/2010

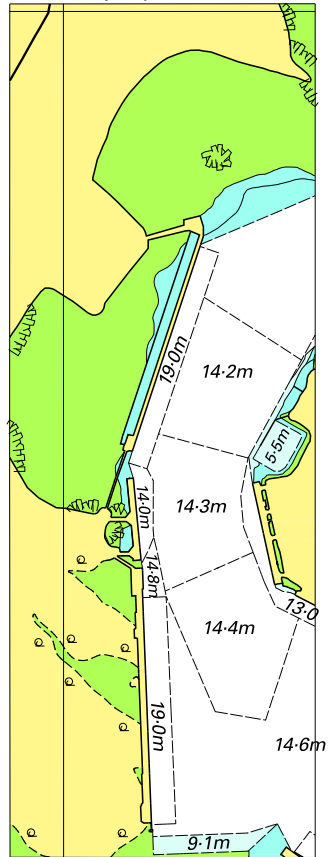


Block for chart Aus 250

© Commonwealth of Australia 2010

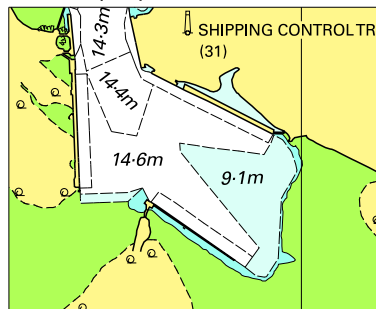
(117.7 x 111.7mm)

To accompany Australian Notice to Mariners 1168/2010



© Commonwealth of Australia 2010
Block for chart Aus 52
(40.4 x 112.9mm)

To accompany Australian Notice to Mariners 1168/2010



© Commonwealth of Australia 2010
Block for chart Aus 53 (49.2 x 40.1mm)

