



22 October 2010

Edition 21

Australian Notices to Mariners are the authority for correcting Australian Charts and Publications

AUSTRALIAN NOTICES TO MARINERS

Notices 1104 – 1153 

Published fortnightly by the Australian Hydrographic Service

Commodore R. NAIRN RAN
Hydrographer of Australia

SECTIONS.

- I. **Australian Notices to Mariners, including blocks and notes.**
- II. **Hydrographic Reports.**
- III. **Navigational Warnings.**

SUPPLEMENTS.

- I. **Tracings**
- II. **Cumulative List of Australian Notices to Mariners.**
- III. **Temporary and Preliminary Notices in force.**
- IV. **Amendments to Admiralty List of Lights and Fog Signals (Vol K),
Radio Signals (NP 281(2), 282, 283(2), 285, 286(4)) and Sailing
Directions (NP 9, 13, 14, 15, 33, 34, 35, 36, 39, 44, 51, 60, 61, 62, 100, 136).**

© Commonwealth of Australia 2010

This work is copyright. Apart from any use permitted under the Copyright Act 1968, no part may be reproduced by any process, adapted, communicated or commercially exploited without prior written permission from The Commonwealth represented by the Australian Hydrographic Service.

IMPORTANT NOTICE

This edition of Notices to Mariners includes all significant information affecting AHS products which the AHS has become aware of since the last edition. All reasonable efforts have been made to ensure the accuracy and completeness of the information, including third party information, on which these updates are based. The AHS regards third parties from which it receives information as reliable, however the AHS cannot verify all such information and errors may therefore exist. The AHS does not accept liability for errors in third party information.

GENERAL INSTRUCTIONS

The substance of these notices should be inserted on the charts affected.

Bearings are referred to the true compass and are reckoned clockwise from North; those relating to lights are given as seen by an observer from seaward. Positions quoted in permanent notices relate to the horizontal datum for the chart(s). When preliminary or temporary notices affect multiple charts, positions will be provided in relation to only one horizontal datum and that datum will be specified. When the multiple charts do not have a common horizontal datum, mariners will be required to adjust the position(s) for those charts not on the specified datum. The range quoted for a light is its nominal range. Depths are with reference to the chart datum of each chart. Heights are above mean high water springs or mean higher high water, as appropriate.

The capital letter (P) or (T) after the number of any notice denotes a preliminary or temporary notice respectively, which are contained separately at the end of the permanent notices. A star (*) adjacent to the number of a notice indicates that the notice is based on original information.

REPORTING OF DANGERS

Mariners are particularly requested to notify the AUSTRALIAN HYDROGRAPHIC SERVICE, Locked Bag 8801 Wollongong, NSW 2500 (Fax 02-4223 6599, e-mail Hydro.NTM@defence.gov.au or, alternatively by filling in and submitting the [Hydrographic Notes](#) forms located on the web site – www.hydro.gov.au), immediately on the discovery of new dangers or suspected dangers to navigation. For changes or defects in aids to navigation notify AusSAR (Fax 02-6230 6868 or email rccaus@amsa.gov.au).

AUTHORISED USE

Copies of Australian notices are available free of charge from the Australian Hydrographic Service (AHS) website (www.hydro.gov.au) and through the eNotices (email) service (www.hydro.gov.au/enotices/enotices.htm).

Individual Notices may be copied for the purpose of inserting Notice substance on official charts and publications. Paper copies may be printed by chart agents and distributed to customers on a cost recovery basis. Participating chart agents are listed on the AHS website as providing a 'Paper Notices to Mariners' service (www.hydro.gov.au/prodserv/distributors/distributors.htm). Copies of the notices may not be sold for profit without prior written agreement.

NUMERICAL INDEX OF NOTICES TO MARINERS

Edition No 21

Notices	Aus Chart, INT Chart, ENC Cell
1104.....	Aus 57,58,200, 203, 308, 345, 678, 714, 718, 719, 780, 781, AU318152, 5294P1
1105.....	Aus 424
1106.....	Aus 235, 236, 814
1107.....	Aus 237
1108.....	Aus 235
1109.....	Aus 263
1110.....	Aus 281, 834
1111.....	Aus 383, 509, 512, 513
1112.....	Aus 386, 676
1113.....	Aus 318, 319, 727, 728, 4721, INT 721, AX 0319F, 4721F
1114.....	Aus 54
1115.....	Aus 112, 113, 117, AX 63112, 70117
1116.....	Aus 4070, INT 70
1117.....	Aus 343, 346, 347, 444, 776, AX 0343E, 0776E
1118.....	Aus 343
1119.....	Aus 141
1120.....	Aus 487
1121.....	Aus 179, 798, 800
1122.....	Aus 4060, INT 60
1123(T).....	Aus 237
1124(T).....	Aus 236
1125(T).....	Aus 241
1126(T).....	Aus 818, AU425151
1127(T).....	Aus 245, 819, AU424151, 5244X5
1128(T).....	Aus 244, 245
1129(T).....	Aus 248, 260, 261, 367, 820, 822, AX 0260E, 0367E, 0820E, 0822E, 60260, 67248, 67261, 423150, 5261P1, 5261P2, 5XX248
1130(T).....	Aus 250, AU5250P2
1131(T).....	Aus 252
1132(T).....	Aus 252, 254, 825
1133(T).....	Aus 252, 253, 268, AU5268P2
1134(T).....	Aus 252, 253, 268
1135(T).....	Aus 255
1136(T).....	Aus 255, 826
1137(T).....	Aus 255, AU5XX255
1138(T).....	Aus 256, 827
1139(T).....	Aus 256, 257
1140(T).....	Aus 4, 701, AU413141
1141(T).....	Aus 4603, 4721, 4722, INT 603, 721, 722, AX 4603F, 4721F, 4722F, AU130090, 130120, 220120
1142(T).....	Aus 40, 732, 733
1143(P).....	Aus 54
1144(T).....	Aus 327, 741
1145(T).....	Aus 328, 742, AU421115
1146(T).....	Aus 328, 743, 744, AU422114
1147(T).....	Aus 4071, INT 71
1148(T).....	Aus 134
1149(T).....	Aus 155, AU438144, 5155P1
1150(T).....	Aus 154, AU5XX154
1151(T).....	Aus 154, AU5XX154
1152(P).....	Aus 154, 155, AU5155P3, 5XX154
1153(T).....	Aus 150, 801

NUMERICAL INDEX OF CHARTS AFFECTED

Edition No 21

Aus Chart	Notices	Aus Chart	Notices
Aus 4.....	1140(T)	Aus 718	1104
Aus 40.....	1142(T)	Aus 719	1104
Aus 54.....	1114, 1143(P)	Aus 727	1113
Aus 57.....	1104	Aus 728	1113
Aus 58.....	1104	Aus 732	1142(T)
Aus 112.....	1115	Aus 733	1142(T)
Aus 113.....	1115	Aus 741	1144(T)
Aus 117.....	1115	Aus 742	1145(T)
Aus 134.....	1148(T)	Aus 743	1146(T)
Aus 141.....	1119	Aus 744	1146(T)
Aus 150.....	1153(T)	Aus 776	1117
Aus 154.....	1150(T), 1151(T), 1152(P)	Aus 780	1104
Aus 155.....	1149(T), 1152(P)	Aus 781	1104
Aus 179.....	1121	Aus 798	1121
Aus 200.....	1104	Aus 800	1121
Aus 203.....	1104	Aus 801	1153(T)
Aus 235.....	1106, 1108	Aus 814	1106
Aus 236.....	1106, 1124(T)	Aus 818	1126(T)
Aus 237.....	1107, 1123(T)	Aus 819	1127(T)
Aus 241.....	1125(T)	Aus 820	1129(T)
Aus 244.....	1128(T)	Aus 822	1129(T)
Aus 245.....	1127(T), 1128(T)	Aus 825	1132(T)
Aus 248.....	1129(T)	Aus 826	1136(T)
Aus 250.....	1130(T)	Aus 827	1138(T)
Aus 252.....	1131(T), 1132(T), 1133(T), 1134(T)	Aus 834	1110
Aus 253.....	1133(T), 1134(T)	Aus 4060	1122
Aus 254.....	1132(T)	Aus 4070	1116
Aus 255.....	1135(T), 1136(T), 1137(T)	Aus 4071	1147(T)
Aus 256.....	1138(T), 1139(T)	Aus 4603	1141(T)
Aus 257.....	1139(T)	Aus 4721	1113, 1141(T)
Aus 260.....	1129(T)	Aus 4722	1141(T)
Aus 261.....	1129(T)	AX 0260E	1129(T)
Aus 263.....	1109	AX 0319F	1113
Aus 268.....	1133(T), 1134(T)	AX 0343E	1117
Aus 281.....	1110	AX 0367E	1129(T)
Aus 308.....	1104	AX 0776E	1117
Aus 318.....	1113	AX 0820E	1129(T)
Aus 319.....	1113	AX 0822E	1129(T)
Aus 327.....	1144(T)	AX 4603F	1141(T)
Aus 328.....	1145(T), 1146(T)	AX 4721F.....	1113, 1141(T)
Aus 343.....	1117, 1118	AX 4722F.....	1141(T)
Aus 345.....	1104	AX 60260.....	1129(T)
Aus 346.....	1117	AX 63112.....	1115
Aus 347.....	1117	AX 67248.....	1129(T)
Aus 367.....	1129(T)	AX 67261.....	1129(T)
Aus 383.....	1111	AX 70117.....	1115
Aus 386.....	1112		
Aus 424.....	1105		
Aus 444.....	1117		
Aus 487.....	1120	INT Chart	Notices
Aus 509.....	1111	INT 60.....	1122
Aus 512.....	1111	INT 70.....	1116
Aus 513.....	1111	INT 71.....	1147(T)
Aus 676.....	1112	INT 603.....	1141(T)
Aus 678.....	1104	INT 721.....	1113, 1141(T)
Aus 701.....	1140(T)	INT 722.....	1141(T)
Aus 714.....	1104		

ENC Cell	Notices
AU130090	1141(T)
AU130120	1141(T)
AU220120	1141(T)
AU318152	1104
AU320116	1144(T)
AU413141	1140(T)
AU421115	1145(T)
AU421148	1131(T)
AU422114	1146(T)
AU423150	1129(T)
AU424151	1127(T)
AU425151	1126(T)
AU438144	1149(T)
AU5XX154	1150(T), 1151(T), 1152(P)
AU5155P1	1149(T)
AU5155P3	1152(P)
AU5244X5	1127(T)
AU5XX248	1129(T)
AU5250P2	1130(T)
AU5XX255	1137(T)
AU5261P1	1129(T)
AU5261P2	1129(T)
AU5268P2	1133(T)
AU5294P1	1104

1104 AUSTRALIA - Product

Australian Hydrographic Service (AA498556, AA499489)

New Chart

<i>Chart</i>	<i>Published</i>	<i>Title and description of amendments</i>	<i>Scale</i>	<i>Index Chart</i>	<i>Price</i>
Aus 678	8/10/2010	Papua New Guinea - New Britain - North Coast - Garove Island 4° 36'.14 S - 4° 45'.00 S 149° 21'.04 E - 149° 35'.00 E <i>New metric chart providing improved coverage of Garove Island.</i>	1:25 000	Aus 5000	\$35.00
Aus 718	22/10/2010	Australia - North Coast - Northern Territory - Cape Stewart to Cuthbert Point 10° 36'.0 S - 12° 08'.6 S 133° 47'.20 E - 134° 46'.6 E <i>New metric chart referred to WGS84 datum and LAT, providing improved coverage of Arnhem Land between Cape Stewart and Cuthbert Point; with maritime boundaries.</i>	1:150 000	Aus 5000	\$35.00
Aus 780	8/10/2010	Australia - South Coast - South Australia - Investigator Strait and Backstairs Passage 35° 05'.4 S - 35° 54'.0 S 136° 40'.0 E - 138° 21'.7 E <i>New metric chart referred to WGS84 datum and LAT, providing improved coverage of Investigator Strait; with maritime boundaries.</i>	1:150 000	Aus 5001	\$35.00
Aus 781	8/10/2010	Australia - South Coast - South Australia - Gulf St Vincent 34° 07'.0 S - 35° 24'.4 S 137° 35'.8 E - 138° 35'.2 E <i>New metric chart referred to WGS84 datum and LAT; with maritime boundaries.</i>	1:150 000	Aus 5001	\$35.00

New Edition

<i>Chart</i>	<i>Published</i>	<i>Title and description of amendments</i>	<i>Scale</i>	<i>Index Chart</i>	<i>Price</i>
Aus 200	10/9/2010	Australia - East Coast - New South Wales - Port Jackson 33° 46'.34 S - 33° 53'.41 S 151° 06'.22 E - 151° 19'.61 E Plan: Parramatta River 33° 48'.82 S - 33° 50'.81 S 151° 01'.52 E - 151° 06'.55 E <i>New edition referred to WGS84 datum and general updating throughout.</i>	1:20 000	Aus 5001	\$35.00
Aus 203	10/9/2010	Australia - East Coast - New South Wales - Port Jackson (Western Sheet) Parramatta and Lane Cove Rivers 33° 49'.04 S - 33° 52'.37 S 151° 04'.03 E - 151° 11'.14 E Inset: Parramatta River 33° 48'.79 S - 33° 49'.80 S 151° 01'.52 E - 151° 04'.02 E Parramatta River (continuation) 33° 48'.71 S - 33° 49'.11 S 151° 00'.55 E - 151° 01'.52 E <i>New edition referred to WGS84 datum and general updating throughout.</i>	1:10 000 1:10 000 1:10 000	Aus 5001	\$35.00

New Electronic Navigation Chart (Seafarer ENC)

<i>Cell Name</i>	<i>Released</i>	<i>Title</i>
AU318152	October 2010	Coral Sea - Turtle Islet
AU5294P1	October 2010	Torres Strait - Red Island Point

New Chart to be published shortly

<i>Chart</i>	<i>Title</i>	<i>Scale</i>	<i>Expected Publication Date</i>
Aus 714	Australia - North Coast - Northern Territory - New Year Island to Port Essington	1:150 000	5 November 2010
Aus 719	Australia - North Coast - Northern Territory - Cuthbert Point to New Year Island	1:150 000	5 November 2010

New Edition to be published shortly

<i>Chart</i>	<i>Title</i>	<i>Scale</i>	<i>Expected Publication Date</i>
Aus 57	Australia – North West Coast – Western Australia – Dampier Archipelago	1:75 000	5 November 2010
Aus 58	Australia – North West Coast – Western Australia – Port of Dampier	1:37 500	5 November 2010

Chart permanently withdrawn

<i>Chart</i>	<i>On publication of new chart</i>
Aus 780	Aus 780
Aus 781	Aus 781

Chart permanently withdrawn without replacement

<i>Chart</i>	<i>On publication of new chart</i>
Aus 345	Aus 780 and Aus 781

Chart to be permanently withdrawn without replacement

<i>Chart</i>	<i>On publication of new chart</i>
Aus 308	Aus 714 and Aus 719

For further details refer to the AHS website at www.hydro.gov.au for new edition and new chart stock arrival information.

When placing orders with a chart agent, mariners should advise whether their order pertains to the current edition or the new edition.

1105* AUSTRALIA - NEW SOUTH WALES - Port Jackson to Fraser Island - Legend

Australian Hydrographic Service (AA494884)

Aus 424 [649/2010]

Amend	legend to <i>Adjoining Chart INT 643 (Aus 4643)</i> in S border	33° 55'.0 S	153° 00'.0 E
-------	---	-------------	--------------

1106* AUSTRALIA - QUEENSLAND - Moreton Bay - Skirmish Banks - Obstruction

Maritime Safety Queensland Notice 867/2010 (AA497399)

Aus 235 [1046/2010]

Insert	#	27° 04'.37 S	153° 13'.00 E
--------	---	--------------	---------------

Aus 236 [1046/2010]

Insert	#	27° 04'.37 S	153° 13'.00 E
--------	---	--------------	---------------

Aus 814 [1046/2010]

Insert	#	27° 04'.47 S	153° 12'.94 E
--------	---	--------------	---------------

1107* AUSTRALIA - QUEENSLAND - Brisbane River - Old Bar Cutting - Light beacon repositioned
Maritime Safety Queensland Notice 865/2010 (AA497397)

Aus 237 [989/2010]

Move	light beacon	27° 21'.62 S	153° 10'.25 E
	to	27° 21'.617 S	153° 10'.256 E

1108* AUSTRALIA - QUEENSLAND - Caloundra - Light buoy withdrawn

Maritime Safety Queensland Notice 841/2010 (AA496758)

Aus 235 [1106/2010]

Delete	light buoy	26° 48'.5 S	153° 07'.9 E
--------	------------	-------------	--------------

1109* AUSTRALIA - QUEENSLAND - Cairns - Trinity Inlet - Light buoy established

Maritime Safety Queensland Notice 873/2010 (AA497974)

Aus 263 [200/2010]

Insert	special cylindrical light buoy, <i>Fl. Y. 4s</i> , with topmark	16° 55'.574 S	145° 47'.050 E
--------	---	---------------	----------------

1110* AUSTRALIA - QUEENSLAND - Claremont Isles to Cape Direction - Buoyage

Australian Maritime Safety Authority (AA498522)

Aus 281 [741/2010]

Insert	direction of buoyage symbol, orient 160°	13° 01'.5 S	143° 43'.5 E
--------	--	-------------	--------------

Aus 834 [741/2010]

Insert	direction of buoyage symbol, orient 160°	12° 55'.5 S	143° 46'.5 E
--------	--	-------------	--------------

1111* PAPUA NEW GUINEA - Salupai Islands - North Island - Shoaling

Australian Hydrographic Service (AA498034)

Aus 383 [362/2010]

Insert	danger line, between	10° 13'.30 S	151° 52'.12 E
		10° 12'.99 S	151° 51'.89 E
		10° 13'.28 S	151° 51'.75 E

Aus 509 [992/2010]

Insert	danger line, between	10° 13'.30 S	151° 52'.12 E
		10° 13'.05 S	151° 51'.94 E
		10° 13'.35 S	151° 51'.88 E

Aus 512 [362/2010]

Insert	danger line, between	10° 13'.30 S	151° 52'.12 E
		10° 13'.05 S	151° 51'.94 E
		10° 13'.35 S	151° 51'.88 E

Aus 513 [992/2010]

Insert	danger line, between	10° 13'.30 S	151° 52'.12 E
		10° 13'.05 S	151° 51'.94 E
		10° 13'.35 S	151° 51'.88 E

1112* PAPUA NEW GUINEA - Garove Island - Chart limits
Australian Hydrographic Service (AA494884)

Aus 386 [903/2010]

Insert	magenta limits, with legend <i>Aus 678</i> in SW corner, between	4° 36'.14 S 4° 36'.14 S 4° 45'.00 S 4° 45'.00 S	149° 34'.42 E 149° 21'.04 E 149° 21'.04 E 149° 34'.42 E
Delete	magenta limits, with legend <i>Aus 676</i> , centred on	4° 40'.0 S	149° 32'.5 E
Aus 676 (plan, Peter Haven) [203/2010]			
Delete	plan, PETER HAVEN	4° 40'.0 S	149° 33'.5 E

1113* AUSTRALIA - WESTERN AUSTRALIA - Holothuria Banks - Depths
HMAS *Melville* (DHDB 1623626)

Aus 318 [1057/2010]

Insert	depth, 19 ₅ m, enclosed by contour depth, 11 ₄ m, and extend contour NW to enclose depth, 20 ₃ m	13° 16'.48 S 13° 20'.84 S 13° 14'.35 S	126° 07'.00 E 126° 10'.07 E 126° 00'.30 E
Substitute	depth, 15 ₇ m, for depth, 16 ₄ m SD	13° 20'.6 S	126° 08'.5 E
Delete	depth, 10 ₃ m, and enclosing contour with legend, Warn Rock ED depth, 17 ₆ m, and enclosing contour depth, 17 ₆ m, and enclosing contour depth, 9 ₈ m SD depth, 17 ₆ m, and enclosing contour depth, 15 ₈ m, and enclosing contour	13° 09'.3 S 13° 16'.0 S 13° 17'.0 S 13° 21'.0 S 13° 14'.0 S 13° 15'.4 S	126° 06'.2 E 126° 06'.8 E 126° 06'.5 E 126° 10'.3 E 126° 00'.7 E 125° 59'.5 E

Aus 319 [1057/2010]

Insert	depth, 19 ₅ m, enclosed by contour depth, 11 ₄ m, and extend contour NW to enclose depth, 20 ₃ m	13° 16'.40 S 13° 20'.76 S 13° 14'.27 S	126° 07'.06 E 126° 10'.13 E 126° 00'.36 E
Substitute	depth, 15 ₇ m, for depth, 16 ₄ m SD	13° 20'.6 S	126° 08'.5 E
Delete	depth, 10 ₃ m, and enclosing contour with legend, Warn Rock ED depth, 17 ₆ m, and enclosing contour depth, 17 ₆ m, and enclosing contour depth, 9 ₈ m SD depth, 17 ₆ m, and enclosing contour depth, 15 ₈ m, and enclosing contour	13° 09'.1 S 13° 16'.0 S 13° 16'.9 S 13° 20'.8 S 13° 13'.8 S 13° 15'.3 S	126° 06'.2 E 126° 07'.0 E 126° 06'.7 E 126° 10'.2 E 126° 00'.7 E 125° 59'.6 E

Aus 727 [1220/2009]

Insert	depth, 11 ₄ m, and extend contour NW to enclose	13° 20'.76 S	126° 10'.13 E
Substitute	depth, 15 ₇ m, for depth, 16 ₄ m SD	13° 20'.6 S	126° 08'.5 E
Delete	depth, 9 ₈ m SD	13° 20'.8 S	126° 10'.2 E

1113* AUSTRALIA - WESTERN AUSTRALIA - Holothuria Banks – Depths (continued)**Aus 728 [1057/2010]**

Insert	depth, 19 ₈ m, enclosed by contour	13° 16'.40 S	126° 07'.06 E
	depth, 11 ₇ m, and extend contour NW to enclose	13° 20'.76 S	126° 10'.13 E
	depth, 20 ₆ m	13° 14'.27 S	126° 00'.36 E
Substitute	depth, 16m, for depth, 16 ₇ m SD	13° 20'.6 S	126° 08'.5 E
Delete	depth, 11m, and enclosing contour with legend, Warn Rock ED	13° 09'.1 S	126° 06'.2 E
	depth, 18 ₃ m, and enclosing contour	13° 16'.0 S	126° 06'.7 E
	depth, 18 ₃ m, and enclosing contour	13° 16'.9 S	126° 06'.7 E
	depth, 10 ₁ m SD	13° 20'.8 S	126° 10'.2 E
	depth, 18 ₃ m, and enclosing contour	13° 13'.8 S	126° 00'.7 E
	depth, 21 ₇ m	13° 14'.5 S	126° 00'.0 E
	depth, 18 ₃ m, and enclosing contour	13° 14'.4 S	126° 07'.6 E

Aus 4721 (INT 721) [906/2010]

Insert	depth, 12 ₅ m	13° 14'.3 S	126° 06'.0 E
Substitute	depth, 11 ₄ m, for depth, 9 ₈ m	13° 21'.0 S	126° 10'.0 E
Delete	depth, 10 ₃ m	13° 09'.1 S	126° 06'.2 E

AX 0319F [1057/2010]

Insert	depth, 19 ₅ m, enclosed by contour	13° 16'.40 S	126° 07'.06 E
	depth, 11 ₄ m, and extend contour NW to enclose	13° 20'.76 S	126° 10'.13 E
	depth, 20 ₃ m	13° 14'.27 S	126° 00'.36 E
Substitute	depth, 15 ₇ m, for depth, 16 ₄ m SD	13° 20'.6 S	126° 08'.5 E
Delete	depth, 10 ₃ m, and enclosing contour with legend, Warn Rock ED	13° 09'.1 S	126° 06'.2 E
	depth, 17 ₆ m, and enclosing contour	13° 16'.9 S	126° 06'.7 E
	depth, 17 ₆ m, and enclosing contour	13° 16'.0 S	126° 07'.0 E
	depth, 9 ₈ m SD	13° 20'.8 S	126° 10'.2 E
	depth, 17 ₆ m, and enclosing contour	13° 13'.8 S	126° 00'.7 E
	depth, 15 ₈ , and enclosing contour	13° 15'.3 S	125° 59'.6 E

AX 4721F [906/2010]

Insert	depth, 12 ₅ m	13° 14'.3 S	126° 06'.0 E
Substitute	depth, 11 ₄ m, for depth, 9 ₈ m	13° 21'.0 S	126° 10'.0 E
Delete	depth, 10 ₃ m	13° 09'.1 S	126° 06'.2 E

1114* AUSTRALIA - WESTERN AUSTRALIA - Port Hedland - Infrastructure; light buoys withdrawn

Former Notices - 331(T)/2009, 332(T)/2009 are cancelled
Port Hedland Port Authority, BHP Billiton (AA495418 - AA495422)

Aus 54 [651/2009]

Insert	accompanying block	20° 19'.2 S	118° 34'.1 E
Delete	light buoy	20° 19'.39 S	118° 34'.96 E
	light buoy	20° 19'.49 S	118° 34'.91 E
	light buoy	20° 19'.60 S	118° 34'.90 E
	light buoy	20° 19'.73 S	118° 34'.89 E

1115* AUSTRALIA - WESTERN AUSTRALIA - Fremantle - Buoys
Fremantle Sailing Club (AA459734)

Aus 112 [421/2010]

Move	buoy	32° 03'.5 S	115° 44'.2 E
	to	32° 03'.52 S	115° 44'.07 E
	buoy	32° 03'.9 S	115° 43'.8 E
	to	32° 03'.80 S	115° 43'.50 E
	buoy	32° 04'.1 S	115° 43'.1 E
	to	32° 04'.00 S	115° 42'.60 E
	buoy	32° 04'.1 S	115° 42'.1 E
	to	32° 04'.00 S	115° 41'.60 E
Delete	buoy	32° 04'.2 S	115° 44'.2 E
	buoy	32° 04'.5 S	115° 42'.6 E

Aus 113 [421/2010]

Move	buoy	32° 03'.5 S	115° 44'.2 E
	to	32° 03'.52 S	115° 44'.07 E
	buoy	32° 03'.9 S	115° 43'.8 E
	to	32° 03'.80 S	115° 43'.50 E
	buoy	32° 04'.1 S	115° 43'.1 E
	to	32° 04'.00 S	115° 42'.60 E
	buoy	32° 04'.1 S	115° 42'.1 E
	to	32° 04'.00 S	115° 41'.60 E
Delete	depth, 4 ₆ m	32° 03'.5 S	115° 44'.1 E
	depth, 11 ₉ m	32° 04'.0 S	115° 41'.6 E
	buoy	32° 04'.2 S	115° 44'.2 E

Aus 117 [911/2010]

Insert	special spar buoy, without topmark	32° 05'.70 S	115° 41'.00 E
	special spar buoy, without topmark	32° 06'.90 S	115° 45'.00 E
Move	buoy	32° 03'.5 S	115° 44'.2 E
	to	32° 03'.52 S	115° 44'.07 E
	buoy	32° 07'.3 S	115° 43'.4 E
	to	32° 06'.90 S	115° 43'.80 E
	buoy	32° 04'.9 S	115° 43'.7 E
	to	32° 04'.85 S	115° 43'.60 E
	buoy	32° 06'.0 S	115° 42'.0 E
	to	32° 06'.70 S	115° 42'.25 E
	buoy	32° 03'.9 S	115° 43'.8 E
	to	32° 03'.80 S	115° 43'.50 E
	buoy	32° 05'.7 S	115° 43'.8 E
	to	32° 05'.90 S	115° 43'.80 E
	buoy	32° 06'.8 S	115° 43'.0 E
	to	32° 06'.90 S	115° 42'.70 E
	buoy	32° 05'.3 S	115° 42'.2 E
	to	32° 05'.13 S	115° 41'.79 E
	buoy	32° 04'.1 S	115° 42'.1 E
	to	32° 04'.00 S	115° 41'.60 E
	buoy	32° 04'.5 S	115° 42'.6 E
	to	32° 04'.60 S	115° 42'.50 E
	buoy	32° 04'.1 S	115° 43'.1 E
	to	32° 04'.00 S	115° 42'.60 E
Delete	depth, 13m	32° 06'.7 S	115° 42'.3 E
	buoy	32° 04'.2 S	115° 44'.2 E
	buoy	32° 04'.8 S	115° 44'.4 E

1115* AUSTRALIA - WESTERN AUSTRALIA - Fremantle – Buoys (continued)
AX 63112 [421/2010]

Move	buoy	32° 03'.5 S	115° 44'.2 E
	to	32° 03'.52 S	115° 44'.07 E
	buoy	32° 03'.9 S	115° 43'.8 E
	to	32° 03'.80 S	115° 43'.50 E
	buoy	32° 04'.1 S	115° 43'.1 E
	to	32° 04'.00 S	115° 42'.60 E
	buoy	32° 04'.1 S	115° 42'.1 E
	to	32° 04'.00 S	115° 41'.60 E
Delete	buoy	32° 04'.2 S	115° 44'.2 E
	buoy	32° 04'.5 S	115° 42'.6 E

AX 70117 [911/2010]

Insert	special spar buoy, without topmark	32° 05'.70 S	115° 41'.00 E
	special spar buoy, without topmark	32° 06'.90 S	115° 45'.00 E
Move	buoy	32° 03'.5 S	115° 44'.2 E
	to	32° 03'.52 S	115° 44'.07 E
	buoy	32° 07'.3 S	115° 43'.4 E
	to	32° 06'.90 S	115° 43'.80 E
	buoy	32° 06'.0 S	115° 42'.0 E
	to	32° 06'.70 S	115° 42'.25 E
	buoy	32° 03'.9 S	115° 43'.8 E
	to	32° 03'.80 S	115° 43'.50 E
	buoy	32° 05'.7 S	115° 43'.8 E
	to	32° 05'.90 S	115° 43'.80 E
	buoy	32° 06'.8 S	115° 43'.0 E
	to	32° 06'.90 S	115° 42'.70 E
	buoy	32° 05'.3 S	115° 42'.2 E
	to	32° 05'.13 S	115° 41'.79 E
	buoy	32° 04'.1 S	115° 42'.1 E
	to	32° 04'.00 S	115° 41'.60 E
	buoy	32° 04'.5 S	115° 42'.6 E
	to	32° 04'.60 S	115° 42'.50 E
	buoy	32° 04'.1 S	115° 43'.1 E
	to	32° 04'.00 S	115° 42'.60 E
	buoy	32° 04'.9 S	115° 43'.7 E
	to	32° 04'.85 S	115° 43'.60 E
Delete	depth, 13m	32° 06'.7 S	115° 42'.3 E
	buoy	32° 04'.2 S	115° 44'.2 E
	buoy	32° 04'.8 S	115° 44'.4 E

1116* INDIAN OCEAN - Prince Edward Islands - Depth

S Addison, BA Notice 28/3528/2009 (AA498398)

Aus 4070 (INT 70) [424/2010]
On certain copies only

Move	depth, 359m, enclosed by danger circle with legend (2008)	42° 46'.0 S	38° 54'.0 E
	to	43° 46'.0 S	38° 54'.0 E

1117* AUSTRALIA - SOUTH AUSTRALIA - Investigator Strait to Gulf St Vincent - Chart limits; legends
 Australian Hydrographic Service (AA494884)

Aus 343 [1061/2010]

Insert	magenta limits, with legend <i>Aus 780</i> in SW corner, between	35° 05'.47 S 35° 05'.47 S 35° 54'.07 S 35° 54'.07 S	137° 02'.00 E 136° 39'.92 E 136° 39'.92 E 137° 02'.00 E
Delete	legend, Adjoining Chart Aus 345, in E border	35° 30'.0 S	137° 02'.0 E

Aus 346 [1061/2010]

Insert	magenta limits, with legend <i>Aus 780</i> in SW corner, between	35° 39'.5 S 35° 54'.0 S 35° 54'.0 S	136° 40'.0 E 136° 40'.0 E 138° 20'.4 E
Delete	legend, Adjoining Chart Aus 345, in N border magenta limits, with legend <i>Aus 780</i> , centred on	35° 39'.5 S 35° 55'.0 S	136° 30'.0 E 138° 00'.0 E

Aus 347 [798/2010]

Insert	magenta limits, with legend <i>Aus 780</i> in SE corner, between	35° 29'.0 S 35° 54'.0 S 35° 54'.0 S	138° 21'.6 E 138° 21'.6 E 138° 03'.3 E
	magenta limits, with legend <i>Aus 126</i> in SE corner, between	35° 35'.5 S 35° 35'.5 S 36° 01'.0 S	138° 03'.3 E 138° 21'.2 E 138° 03'.3 E
Delete	magenta limits, with legend <i>Aus 780</i> , centred on legend, Adjoining Chart Aus 345, in W border	35° 50'.0 S 35° 37'.0 S	138° 25'.0 E 138° 03'.3 E

Aus 444 [1061/2010]

Insert	magenta limits, with legend <i>Aus 780</i> in NW corner, between	35° 05'.4 S 35° 05'.4 S 35° 54'.0 S 35° 54'.0 S 35° 05'.4 S	138° 21'.6 E 136° 40'.0 E 136° 40'.0 E 138° 21'.6 E 138° 21'.6 E
	magenta limits, with legend <i>Aus 781</i> in SW corner, between	34° 07'.0 S 34° 07'.0 S 35° 24'.4 S 35° 24'.4 S 34° 07'.0 S	138° 35'.2 E 137° 35'.8 E 137° 35'.8 E 138° 35'.2 E 138° 35'.2 E
Delete	magenta limits, with legends Aus 345, centred on	35° 00'.0 S	137° 20'.0 E

Aus 776 [913/2010]

Insert	magenta legend, <i>Adjoining Chart Aus 780</i> in S border	35° 11'.92 S	136° 42'.50 E
--------	--	--------------	---------------

AX 0343E [1061/2010]

Insert	magenta limits, with legend <i>Aus 780</i> in SW corner, between	35° 05'.47 S 35° 05'.47 S 35° 54'.07 S 35° 54'.07 S	137° 02'.00 E 136° 39'.92 E 136° 39'.92 E 137° 02'.00 E
Delete	legend, Adjoining Chart Aus 345, in E border	35° 30'.0 S	137° 02'.0 E

AX 0776E [913/2010]

Insert	magenta legend, <i>Adjoining Chart Aus 780</i> in S border	35° 11'.92 S	136° 42'.50 E
--------	--	--------------	---------------

1118* AUSTRALIA - WESTERN AUSTRALIA - Kangaroo Island - Cape Borda - Light
Australian Hydrographic Service (AA498048)

Aus 343 [1117/2010]

On certain copies only

Amend	elevation to 155m	35° 45'.2 S	136° 35'.5 E
-------	-------------------	-------------	--------------

1119* AUSTRALIA - VICTORIA - Port Campbell - Lights

Former Notice - 574(P)/2010 is cancelled

Maritime Systems (AA475314, AA475315), Victorian Notice 46(T)/2010 (AA471058)

Aus 141 (plan, Port Campbell) [311/2010]

Insert	light, <i>Iso.Bu.4s 12m 4M</i>	38° 37'.188 S	142° 59'.600 E
	light, <i>Q.Bu.7m 4M</i>	38° 37'.272 S	142° 59'.484 E
	a dashed line in a direction 227.3° for a distance of 640m, thence a continuous line for 1200m, with legend 047.3°, emanating from light	38° 37'.188 S	142° 59'.600 E
Delete	beacon	38° 37'.20 S	142° 59'.61 E

1120* AUSTRALIA - TASMANIA - Eddystone Point - Depth

Australian Hydrographic Service (AA496267)

Aus 487 [1005/2010]

Insert	upright sounding, 97m, enclosed by broken contour	41° 04'.28 S	148° 32'.07 E
--------	---	--------------	---------------

1121* AUSTRALIA - TASMANIA - Neds Reef - Rock disproved

Department of Defence (AA495903)

Aus 179 (plan, Franklin Sound) [844/2010]

Delete	rock and enclosing danger circle with legend, Rep(1972)	40° 19'.8 S	148° 04'.3 E
--------	---	-------------	--------------

Aus 798 [430/2010]

Delete	rock and semi enclosing danger circle with legend, Rep(1972)	40° 19'.8 S	148° 04'.3 E
--------	--	-------------	--------------

Aus 800 [750/2010]

Delete	rock and semi enclosing danger circle with legend, Rep(1972)	40° 19'.8 S	148° 04'.3 E
--------	--	-------------	--------------

1122 PACIFIC OCEAN - Tonga Ridge - Depth

BA Notice 37/4442/2010 (AA498397)

Aus 4060 (INT 60) [543/2010]

Insert	depth, 474m, and extend 1000m contour W to enclose	23° 34'.9 S	176° 39'.8 W
--------	--	-------------	--------------

1123(T)/2010 AUSTRALIA - QUEENSLAND - Brisbane River - Fisherman Islands - Harbour works*Date* - Until 28 February 2011

Maritime Safety Queensland Notice 899(T)/2010 (AA498767)

Works associated with the construction of berth 11 are in progress (27° 21'.63 S 153° 10'.70 E).

The barge *Maeve Anne* is conducting piling operations and has deployed two anchors. The down stream anchor will be marked by a special light buoy. The barge will display appropriate lights and shapes.

Information on the status of the barge and moorings can be obtained from Brisbane harbour on VHF Ch 12 or (07) 3305 1700.

Mariners are advised to navigate with caution in the area.

Chart temporarily affected - Aus 237**1124(T)/2010 AUSTRALIA - QUEENSLAND - Moreton Bay - Deception Bay - Light beacon destroyed**

Maritime Safety Queensland Notice 893(T)/2010 (AA498766)

No4 light beacon (27° 09'.03 S 153° 03'.26 E) has been destroyed; a port lateral light buoy, *Fl.R.3s*, exists in situ.

Chart temporarily affected - Aus 236**1125(T)/2010 AUSTRALIA - QUEENSLAND - Great Sandy Strait - North Head - Harbour works***Date* - Until 20 December 2010

Maritime Safety Queensland Notice 869(T)/2010 (AA498025)

Harbour works associated with the redevelopment of the boat ramp (25° 25'.80S 152° 55'.47 E) are in progress.

Mariners are advised that during the works the ramp will not be available for access and to use the southern ramp.

Chart temporarily affected - Aus 241**1126(T)/2010 AUSTRALIA - QUEENSLAND - Round Hill Head - Buoy off station**

Maritime Safety Queensland Notice 890(T)/2010 (AA499249)

The starboard lateral buoy (24° 09'.03 S 151° 53'.00 E) is off station.

Chart temporarily affected - Aus 818 - AU425151**1127(T)/2010 AUSTRALIA - QUEENSLAND - Gladstone - Targinie Channel to Kangaroo Island - Scientific instruments recovered***Former Notice* - 1017(T)/2010 is cancelled

Maritime Safety Queensland Notice 783(T)/2010 (AA497971)

Cancel this notice on receipt.

Chart formerly affected - Aus 245 - Aus 819 - AU424151 - AU5244X5

1128(T)/2010 AUSTRALIA - QUEENSLAND - Gladstone - Dredging operations*Former Notice - 1074(T)/2010 is cancelled**Date - Until 18 January 2011*

Maritime Safety Queensland Notice 844(T)/2010 (AA496792)

The dredge, *Wombat*, is conducting dredging operations in the areas bounded by the following positions:

23° 46'.79 S 151° 11'.99 E

23° 46'.92 S 151° 11'.98 E

23° 46'.92 S 151° 11'.91 E

23° 46'.75 S 151° 11'.93 E

and

23° 49'.25 S 151° 14'.37 E

23° 49'.40 S 151° 14'.49 E

23° 49'.41 S 151° 14'.44 E

23° 49'.36 S 151° 14'.38 E.

The dredge will monitor VHF Ch 14 and Ch 16 and display appropriate lights and symbols.

Mariners are advised to navigate with caution in the area.

Chart temporarily affected - Aus 244 - Aus 245**1129(T)/2010 AUSTRALIA - QUEENSLAND - Shoalwater Bay - Live firing***Former Notice - 1077(T)/2010 is cancelled**Date - Until 25 November 2010*

Maritime Safety Queensland Notice 887(T)/2010 (AA498782)

Live firing activities will be conducted in the Shoalwater Bay training area during the period 26 September to 21 October 2010 and 2 November to 14 November 2010 within Marine Danger Area 1 and 26 September to 24 November 2010 within Marine Danger Area 2.

A marine danger area extends to all internal waters bounded by the following positions (WGS84 datum):

Marine Danger Area 1

22° 21'.20 S 150° 10'.52 E

22° 20'.35 S 150° 12'.00 E

22° 16'.94 S 150° 12'.07 E

22° 14'.92 S 150° 20'.06 E

22° 14'.76 S 150° 20'.31 E

22° 09'.00 S 150° 25'.00 E

22° 09'.00 S 150° 37'.00 E

22° 14'.38 S 150° 37'.00 E

22° 19'.92 S 150° 45'.05 E

22° 29'.13 S 150° 49'.71 E

22° 31'.09 S 150° 43'.53 E

22° 18'.98 S 150° 35'.98 E

22° 21'.20 S 150° 10'.52 E.

Marine Danger Area 2

22° 21'.20 S 150° 10'.52 E

22° 18'.98 S 150° 35'.98 E

22° 31'.09 S 150° 43'.53 E

22° 40'.00 S 150° 38'.00 E

22° 21'.20 S 150° 10'.52 E.

All waters, creeks, beaches and other areas within the declared marine danger area are not available for access.

Mariners are advised to keep clear of this area throughout the above times.

Chart temporarily affected - Aus 248 - Aus 260 - Aus 261 - Aus 367 - Aus 820 - Aus 822 - AX 0260E - AX 0367E - AX 0820E - AX 0822E - AX 60260 - AX 67248 - AX 67261 - AU423150 - AU5261P1 - AU5261P2 - AU5XX248

1130(T)/2010 AUSTRALIA - QUEENSLAND - Hay Point - Diving operations

Date - Until 30 October 2010

Maritime Safety Queensland Notices 895(T)/2010, 897(T)/2010, 911(T)/2010 (AA499285, AA499286, AA499504)

Diving operations are in progress at Hay Point berth 2 (21° 15'.56 S 149° 18'.70 E) and in the vicinity of position 21° 15'.98 S 149° 18'.81 E.

MV *Pacific Tiger*, *Clarence* and *BHD Supply* will display appropriate lights and shapes and will monitor VHF Ch 14 and Ch 16.

Blasting operations are in progress in the vicinity of position 21° 15'.98 S 149° 18'.81 E. Notification will be given 1 hour prior to each blasting operation on VHF Ch 16.

Mariners are advised to navigate with caution in the area.

Chart temporarily affected - Aus 250 - AU5250P2**1131(T)/2010 AUSTRALIA - QUEENSLAND - Macona Inlet - Light beacon destroyed; light buoy established**

Former Notice - 447(T)/2010 is cancelled

Maritime Safety Queensland Notice 905(T)/2010 (AA499417)

The starboard lateral light beacon, *Fl.G.2-5s* (20° 10'.29 S 148° 55'.10 E), has been destroyed; a starboard lateral light buoy, *Fl.G.2-5s*, exists in position 20° 10'.38 S 148° 55'.16 E.

Chart temporarily affected - Aus 252**1132(T)/2010 AUSTRALIA - QUEENSLAND - Bird Island to Groper Point - Nav aids**

Former Notice - 325(T)/2010 is cancelled

Maritime Safety Queensland Notice 894(T)/2010 (AA498765)

The south cardinal light beacon (20° 05'.76 S 148° 52'.59 E) has been destroyed; a south cardinal light buoy, *Q(6)+LFl.15s*, exists in position 20° 05'.79 S 148° 52'.63 E.

The light beacon, *Fl.G.4s* (20° 04'.25 S 148° 53'.45 E), has been damaged.

The light beacon, *Fl.G.2-5s* (20° 04'.33 S 148° 53'.77 E), has been damaged.

The light buoy, *Fl.G.6s* (20° 03'.86 S 148° 54'.23 E), has been destroyed.

Chart temporarily affected - Aus 252 - Aus 254 - Aus 825**1133(T)/2010 AUSTRALIA - QUEENSLAND - Airlie Beach - Muddy Bay - Wreck salvaged**

Former Notice - 385(T)/2010 is cancelled

Maritime Safety Queensland Notice 303(T)/2010 (AA463827)

Cancel this notice on receipt.

Chart formerly affected - Aus 252 - Aus 253 - Aus 268 - AU5268P2**1134(T)/2010 AUSTRALIA - QUEENSLAND - Airlie Beach - Muddy Bay - Dredging operations completed**

Former Notice - 663(T)/2008 is cancelled

Maritime Safety Queensland Notice 370(T)/2008 (AA343748)

Cancel this notice on receipt.

Chart formerly affected - Aus 252 - Aus 253 - Aus 268

1135(T)/2010 AUSTRALIA - QUEENSLAND - Abbot Point - Light buoy recovered

Former Notice - 460(T)/2008 is cancelled
Maritime Safety Queensland (AA499320)

Cancel this notice on receipt.

Chart formerly affected - Aus 255**1136(T)/2010 AUSTRALIA - QUEENSLAND - Abbot Point - Scientific instruments recovered**

Former Notice - 664(T)/2008 is cancelled
Maritime Safety Queensland (AA499320)

Cancel this notice on receipt.

Chart formerly affected - Aus 255 - Aus 826**1137(T)/2010 AUSTRALIA - QUEENSLAND - Abbot Point - Depth information**

Former Notice - 1152(T)/2008 is cancelled
Maritime Safety Queensland (AA499320)

Cancel this notice on receipt.

Chart formerly affected - Aus 255 - AU5XX255**1138(T)/2010 AUSTRALIA - QUEENSLAND - Cleveland Bay - Scientific instruments**

Date - Until 7 January 2011
Maritime Safety Queensland Notice 889(T)/2010 (AA498779)

Subsurface scientific instruments exist in positions 19° 08'.29 S 146° 53'.14 E and 19° 09'.03 S 146° 58'.26 E.

Mariners are advised not to navigate within an 1850m radius of each instrument.

Chart temporarily affected - Aus 256 - Aus 827**1139(T)/2010 AUSTRALIA - QUEENSLAND - Townsville - Ross River - Dredging operations**

Date - Until 30 June 2011
Maritime Safety Queensland Notice 898(T)/2010 (AA498774)

The dredge *Nu Endeavour* is conducting dredging operations in the Ross River Channel (19° 15'.83 S 146° 50'.43 E).

A floating pipeline marked by flashing lights exists in the area and light buoys, *Fl. Y.5s*, mark the submerged section of the pipeline.

The dredge can be contacted on VHF Ch 16.

Mariners are advised to navigate with caution in the area.

Chart temporarily affected - Aus 256 - Aus 257**1140(T)/2010 AUSTRALIA - QUEENSLAND - Weipa - Scientific instruments recovered**

Former Notice - 809(T)/2010 is cancelled
Maritime Safety Queensland Notice 910/2010 (AA499510)

Cancel this notice on receipt.

Chart formerly affected - Aus 4 - Aus 701 - AU413141

1141(T)/2010 AUSTRALIA - WESTERN AUSTRALIA - Ashmore Reef to Rowley Shoals - Seismic survey

Date - Until 1 December 2010

Searcher Seismic Pty Ltd (AA499496)

MV *Aquila Explorer*, with a 8000m towed array, will be conducting a survey in the area bounded by 10° 50'.0 S to 16° 30'.0 S and 119° 00'.0 E to 126° 00'.0 E (WGS84 datum).

A 5000m exclusion zone exists around the vessel.

Chart temporarily affected - Aus 4603 (INT 603) - Aus 4721 (INT 721) - Aus 4722 (INT 722) - AX 4603F - AX 4721F - AX 4722F - AU130090 - AU130120 - AU220120

1142(T)/2010 AUSTRALIA - WESTERN AUSTRALIA - Irvine Island - Scientific instruments

Former Notice - 768(T)/2010 is cancelled

Date - Until 31 October 2011

Department of Transport Notice 112/2010 (AA497996)

Scientific instruments exist as follows:

Position	Remarks
16° 04'.4 S 123° 33'.8 E	lit buoy, <i>Fl(5)Y.20s</i>
16° 04'.9 S 123° 33'.3 E	lit buoy, <i>Fl(5)Y.20s</i>
16° 05'.7 S 123° 32'.5 E	lit buoy, <i>Fl(5)Y.20s</i>
16° 06'.0 S 123° 33'.2 E	subsurface.

Mariners are not to use these buoys as moorings.

Chart temporarily affected - Aus 40 - Aus 732 - Aus 733

1143(P)/2010 AUSTRALIA - WESTERN AUSTRALIA - Port Hedland - Light beacons established

Former Notice - 827(T)/2008 is cancelled

Date - Until 19 November 2010

Port Hedland Port Authority (AA498019, AA498029)

Leading beacons with temporary lights, *F.R.*, bearing 116-8° exist in positions 20° 19'.71 S 118° 35'.29 E and 20° 19'.75 S 118° 35'.37 E.

The light beacons in positions 20° 19'.51 S 118° 34'.95 E and 20° 19'.54 S 118° 35'.00 E will be permanently discontinued shortly.

Chart which will be affected - Aus 54

1144(T)/2010 AUSTRALIA - WESTERN AUSTRALIA - Dampier Archipelago - Oil field northwestwards

Date - Until 16 April 2011

Woodside Energy Ltd (AA499441)

ISV *Nor Australis*, *Venturer* and *Rockwater 2* will be conducting refurbishment work on the Wanaea oil field infrastructure within the following area (WGS84 datum):

19° 26'.5 S 116° 29'.0 E
19° 33'.5 S 116° 30'.0 E
19° 37'.0 S 116° 24'.5 E
19° 36'.0 S 116° 24'.0 E.

FPSO *Cossack Pioneer* will be decommissioned late January 2011.

FPSO *Okha* will be established late March 2011.

Mariners are advised to navigate with caution in the area.

Chart temporarily affected - Aus 327 - Aus 741

1145(T)/2010 AUSTRALIA - WESTERN AUSTRALIA - Montebello Islands - Scientific instruments recovered

Former Notice - 814(T)/2010 is cancelled
Fugro (AA482678)

Cancel this notice on receipt.

Chart formerly affected - Aus 328 - Aus 742 - AU421115

1146(T)/2010 AUSTRALIA - WESTERN AUSTRALIA - Peak Island to Rocky Point - Drilling operations completed

Former Notice - 1094(T)/2010 is cancelled
BHP Billiton Petroleum Pty Ltd (AA497081, AA497082)

Cancel this notice on receipt.

Chart formerly affected - Aus 328 - Aus 743 - Aus 744 - AU422114

1147(T)/2010 INDIAN OCEAN - Scientific instruments

Former Notice - 1135(T)/2006 is cancelled
BA Notice 21/2515/2010 (AA499321),

Cancel this notice on receipt.

Note: sufficiently promulgated

Chart formerly affected - Aus 4071 (INT 71)

1148(T)/2010 AUSTRALIA - SOUTH AUSTRALIA - Port Lincoln - Wreck

Department for Transport, Energy and Infrastructure SA Notice 41/2010 (AA498791)

A stranded wreck exists in position 34° 43'2 S 135° 52'2 E. A 50m exclusion exists around the wreck.

Mariners are advised to navigate with caution in the area.

Chart temporarily affected - Aus 134

1149(T)/2010 AUSTRALIA - VICTORIA - Port Phillip - Altona - Dredging operations completed

Former Notice - 1099(T)/2010 is cancelled
Victorian Notice 95(T)/2010 (AA496796)

Cancel this notice on receipt.

Chart formerly affected - Aus 155 - AU438144 - AU5155P1

1150(T)/2010 AUSTRALIA - VICTORIA - Port Phillip - Port Melbourne - River Yarra - Harbour works

Former Notice - 531(T)/2010 is cancelled

Date - Until 17 December 2010

Victorian Notice 98/2010 (AA499428)

Works are in progress at West Gate Bridge (37° 49'.77 S 144° 53'.89 E) resulting in a reduction in the permissible air draught of transiting vessels.

Restrictions apply as follows;

Vessels with air draught less than 43.5m no restrictions apply, however notice is to be provided to construction crew. Incoming vessels report to Melbourne VTS on passing breakwater pier and departing vessels report to Melbourne VTS on departing from berths upstream of the West Gate Bridge.

Vessels with air draught 43.5m to 49.0m are permitted to transit subject to evacuation of all personnel from platform. Incoming vessels report to Melbourne VTS 30 minutes prior to arrival Fawkner beacon and departing vessels report to Melbourne VTS 30 minutes prior to departing from berths upstream of the West Gate Bridge.

Vessels with air draught greater than 49.0m are permitted to transit, however notice is to be provided to the platform master to retract the platform. Incoming vessels report to Melbourne VTS after rounding Hovell pile and departing vessels report to Melbourne VTS 2 hours prior to departing from berths upstream of the West Gate Bridge.

Melbourne VTS will relay the notice to the West Gate Bridge platform master.

Chart temporarily affected - Aus 154 - AU5XX154**1151(T)/2010 AUSTRALIA - VICTORIA - Port Phillip - Port Melbourne - Depth information**

Former Notice - 230(T)/2009 is cancelled

Port of Melbourne Corporation (AA479645)

Cancel this notice on receipt.

Chart formerly affected - Aus 154 - AU5XX154**1152(P)/2010 AUSTRALIA - VICTORIA - Port Phillip - Hobsons Bay - Station Pier to St Kilda - Beacons to be established**

Date - On or about 5 November 2010

Victorian Notices 103(T)/2010, 107(T)/2010 (AA499387)

Special beacons have been established between Station Pier (37° 50'.71 S 144° 55'.85 E) and St Kilda harbour (37° 51'.70 S 144° 58'.00 E).

An isolated danger light beacon has been established in position 37° 51'.30 S 144° 57'.34 E.

A light beacon, *F(2)6s*, exists in position 37° 52'.33 S 144° 58'.21 E.

Mariners are advised to navigate with caution in the area.

Chart which will be affected - Aus 154 - Aus 155 - AU5155P3 - AU5XX154

1153(T)/2010 AUSTRALIA - VICTORIA - Kilcunda - Exclusion zone*Date* - Until 30 June 2011

Victorian Notice 99(T)/2010 (AA498000)

An exclusion zone, associated with the desalination project, exists in an area bounded by the following:

<i>Position</i>	<i>Remarks</i>
38° 35'.51 S 145° 30'.43 E	north cardinal light buoy, Q
38° 35'.51 S 145° 30'.13 E	west cardinal light buoy, Q(9)15s
38° 35'.87 S 145° 30'.26 E	west cardinal light buoy, Q(9)15s
38° 36'.23 S 145° 30'.38 E	south cardinal light buoy, Q(6)+LFl. 15s
38° 36'.23 S 145° 30'.63 E	south cardinal light buoy, Q(6)+LFl. 15s
38° 36'.04 S 145° 30'.85 E	east cardinal light buoy, Q(3)10s
38° 35'.85 S 145° 31'.07 E	
38° 35'.52 S 145° 30'.73 E.	

Only authorised vessels are permitted entry.

Chart temporarily affected - Aus 150 - Aus 801

HYDROGRAPHIC REPORTS

<i>Locality</i>	<i>Report</i>	<i>Ship/Authority</i>	<i>Observer</i>
PNG- Deboyne Lagoon	Beacons		WG Cray

NAVIGATION WARNINGS

The following radio messages have been received during the period to 22 October 2010. Signal copies of these messages may be destroyed. It is recommended that the reprint of Navigational Warnings should be kept in a file or a book divided into areas. Cancellation should be made on receipt of signals and reprints.

Rigs on location other than those listed in the latest Section III summary are the subject of Radio Navigational Warnings. Rigs in transit will not be the subject of Warnings.

AUSCOAST WARNING

- 243 Drill rig *Ocean Patriot* in position 38° 34'.65 S 148° 21'.07 E. 2.5M clearance requested.
 244 Drill rig *Nan Hai 6* in position 19° 26'.95 S 116° 29'.28 E. 2.5M clearance requested.
 245 Cancelled.
 246 Cancelled.
 247 Drill rig *Ocean Epoch* in position 21° 34'.30 S 114° 09'.77 E. 2.5M clearance requested.
 248 Drill rig *Jack Bates* in position 20° 04'.24 S 113° 46'.46 E. 2.5M clearance requested.
 249 Drill rig *Songa Venus* in position 13° 04'.78 S 124° 27'.08 E. 2.5M clearance requested.
 250 Special purpose vessel *Aquila Explorer* conducting seismic survey in area bounded by 11° 52'.0 S to 12° 20'.0 S and 127° 55'.0 E to 128° 30'.0 E. 6M clearance requested.
 251 Cancelled.
 252 Cancelled.
 253 Scientific buoy deployed in position 11° 05'.06 S 132° 06'.31 E. 500m clearance requested.
 254 Cancelled.
 255 Ackers shoal light K3278.7 (10° 18'.60 S 142° 48'.70 E) reduced power.
 256 Cancelled.
 257 Drill rig *Ensco 109* in position 20° 17'.23 S 116° 16'.31 E. 2.5M clearance requested.
 258 Special purpose vessel *Ramform Explorer* conducting seismic survey in area bounded by 13° 26'.0 S to 14° 19'.0 S and 122° 58'.0 E to 123° 28'.0 E. 6M clearance requested.

NAVAREA X WARNINGS

Nil.

Navigational warnings in force as at 220001UTC OCT 10.**Auscoast**

111 197 220 231 239 241 243 244 247 248 249 250 253 255 257 258

Navarea X

008

Summary of mobile drilling rigs as at 220001UTC OCT 10.

<i>Name</i>	<i>Position</i>
Songa Venus	13° 04'.78 S 124° 27'.08 E
Nan Hai 6	19° 26'.95 S 116° 29'.28 E
Ensco 109	20° 17'.23 S 116° 16'.31 E
Maersk Discoverer	19° 54'.80 S 115° 07'.90 E
Stena Clyde	20° 36'.50 S 114° 54'.40 E
Ocean America	19° 23'.59 S 114° 18'.43 E
Ocean Epoch	21° 34'.30 S 114° 09'.77 E
Jack Bates	20° 04'.24 S 113° 46'.46 E
Ocean Patriot	38° 34'.65 S 148° 21'.07 E

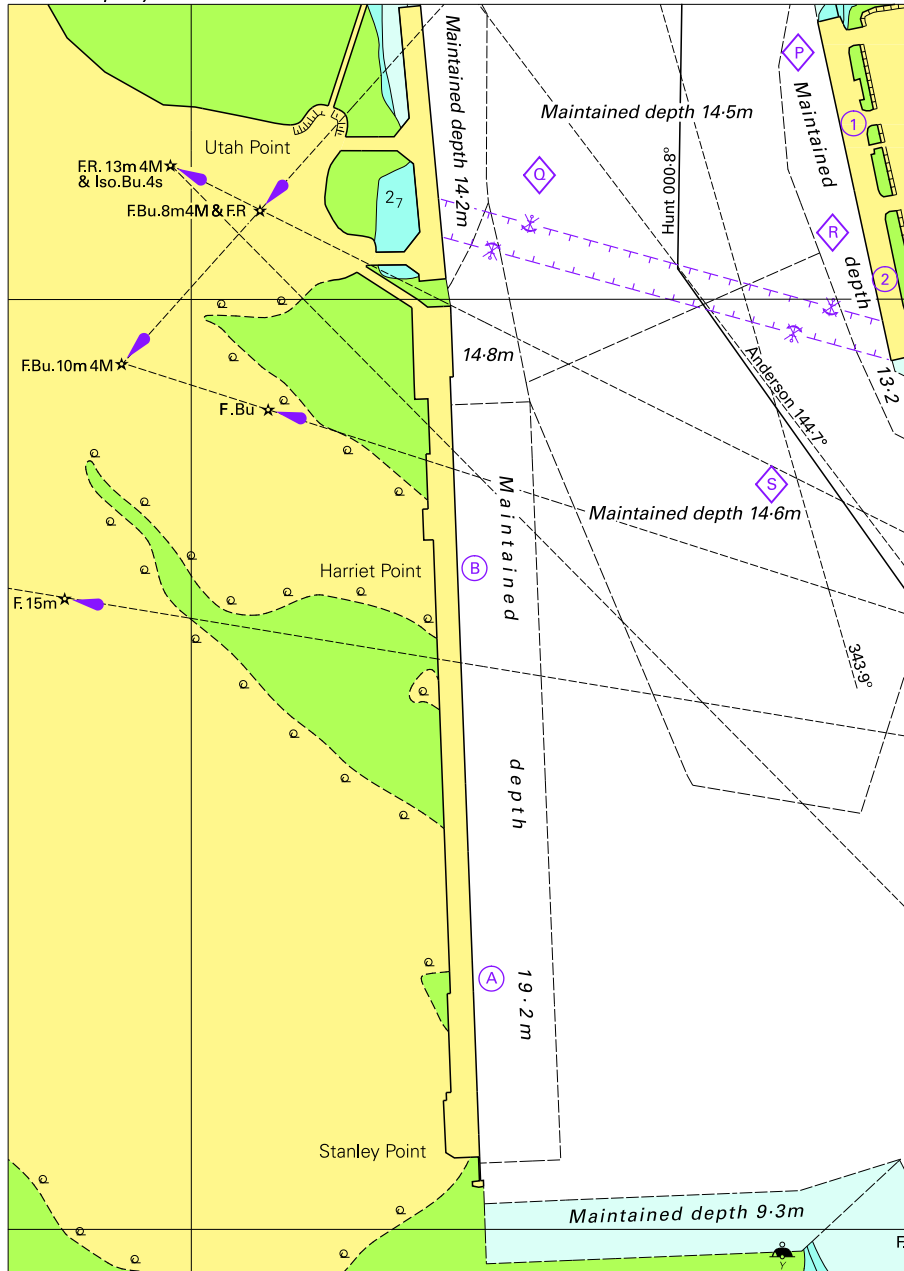
NAVAREA XIV WARNINGS

Nil.

Navarea XIV warnings in force as at 220001UTC OCT 10.

019 028

To accompany Australian Notice to Mariners 1114/2010



Block for chart Aus 54

© Commonwealth of Australia 2010

(118.8 x 167.7mm)