



8 October 2010

Edition 20

Australian Notices to Mariners are the authority for correcting Australian Charts and Publications

AUSTRALIAN NOTICES TO MARINERS

Notices 1039 – 1103 

Cumulative List – October 2010
List of Temporary and Preliminary Notices in force

Published fortnightly by the Australian Hydrographic Service

Commodore R. NAIRN RAN
Hydrographer of Australia

SECTIONS.

- I. [Australian Notices to Mariners, including blocks and notes.](#)
- II. [Hydrographic Reports.](#)
- III. [Navigational Warnings.](#)

SUPPLEMENTS.

- I. [Tracings](#)
- II. [Cumulative List of Australian Notices to Mariners.](#)
- III. [Temporary and Preliminary Notices in force.](#)
- IV. [Amendments to Admiralty List of Lights and Fog Signals \(Vol K\), Radio Signals \(NP 281\(2\), 282, 283\(2\), 285, 286\(4\)\) and Sailing Directions \(NP 9, 13, 14, 15, 33, 34, 35, 36, 39, 44, 51, 60, 61, 62, 100, 136\).](#)

© Commonwealth of Australia 2010

This work is copyright. Apart from any use permitted under the Copyright Act 1968, no part may be reproduced by any process, adapted, communicated or commercially exploited without prior written permission from The Commonwealth represented by the Australian Hydrographic Service.

IMPORTANT NOTICE

This edition of Notices to Mariners includes all significant information affecting AHS products which the AHS has become aware of since the last edition. All reasonable efforts have been made to ensure the accuracy and completeness of the information, including third party information, on which these updates are based. The AHS regards third parties from which it receives information as reliable, however the AHS cannot verify all such information and errors may therefore exist. The AHS does not accept liability for errors in third party information.

GENERAL INSTRUCTIONS

The substance of these notices should be inserted on the charts affected.

Bearings are referred to the true compass and are reckoned clockwise from North; those relating to lights are given as seen by an observer from seaward. Positions quoted in permanent notices relate to the horizontal datum for the chart(s). When preliminary or temporary notices affect multiple charts, positions will be provided in relation to only one horizontal datum and that datum will be specified. When the multiple charts do not have a common horizontal datum, mariners will be required to adjust the position(s) for those charts not on the specified datum. The range quoted for a light is its nominal range. Depths are with reference to the chart datum of each chart. Heights are above mean high water springs or mean higher high water, as appropriate.

The capital letter (P) or (T) after the number of any notice denotes a preliminary or temporary notice respectively, which are contained separately at the end of the permanent notices. A star (*) adjacent to the number of a notice indicates that the notice is based on original information.

REPORTING OF DANGERS

Mariners are particularly requested to notify the AUSTRALIAN HYDROGRAPHIC SERVICE, Locked Bag 8801 Wollongong, NSW 2500 (Fax 02-4223 6599, e-mail Hydro.NTM@defence.gov.au or, alternatively by filling in and submitting the [Hydrographic Notes](#) forms located on the web site – www.hydro.gov.au), immediately on the discovery of new dangers or suspected dangers to navigation. For changes or defects in aids to navigation notify AusSAR (Fax 02-6230 6868 or email rccaus@amsa.gov.au).

AUTHORISED USE

Copies of Australian notices are available free of charge from the Australian Hydrographic Service (AHS) website (www.hydro.gov.au) and through the eNotices (email) service (www.hydro.gov.au/enotices/enotices.htm).

Individual Notices may be copied for the purpose of inserting Notice substance on official charts and publications. Paper copies may be printed by chart agents and distributed to customers on a cost recovery basis. Participating chart agents are listed on the AHS website as providing a 'Paper Notices to Mariners' service (www.hydro.gov.au/prodserv/distributors/distributors.htm). Copies of the notices may not be sold for profit without prior written agreement.

NUMERICAL INDEX OF NOTICES TO MARINERS

Edition No 20

Notices	Aus Chart, INT Chart, ENC Cell
1039.....	Aus 345, 678, 780, 781, AU320121
1040.....	Aus 202
1041.....	Aus 204
1042.....	Aus 809, AX 0809E
1043.....	Aus 219
1044.....	Aus 220
1045.....	Aus 230
1046.....	Aus 235, 236, 814
1047.....	Aus 241, 817
1048.....	Aus 267
1049.....	Aus 830, AX 6027S
1050.....	Aus 832
1051.....	Aus 833
1052.....	Aus 4604, INT 604, AX 4604F
1053.....	Aus 387
1054.....	Aus 296, 376, 700
1055.....	Aus 6, 303
1056.....	Aus 305
1057.....	Aus 318, 319, 728, AX 0319F
1058.....	Aus 57, 58, 741
1059.....	Aus 59
1060.....	Aus 64, 328, 743
1061.....	Aus 343, 346, 444, AX 0343E
1062.....	Aus 139
1063.....	Aus 125
1064.....	Aus 158
1065.....	Aus 181
1066.....	Cumulative List of Australia Notices to Mariners – October 2010
1067(T).....	Aus 814, AU428153
1068(T).....	Aus 236, AU428153
1069(T).....	Aus 236, AU428153
1070(T).....	Aus 236, AU5237X8
1071(T).....	Aus 236, AU5237X8
1072(T).....	Aus 236, 237, AU428153, 5237X8
1073(T).....	Aus 235
1074(T).....	Aus 244, 245
1075(T).....	Aus 245, AU5244X5
1076(T).....	Aus 164, 244, 245, AU5164P1, AU5244X5
1077(T).....	Aus 248, 260, 261, 367, 820, 822, AX 0260E, 0367E, 0820E, 0822E, 60260, 67248, 67261, AU423150, 5261P1, 5261P2, 5XX248
1078(T).....	Aus 249, 250, AX 0249E, AU422149, 5250P2
1079(T).....	Aus 256, 257
1080(T).....	Aus 256, 257
1081(T).....	Aus 258
1082(T).....	Aus 270, AU5270P1
1083(T).....	Aus 309, 315, AX 0309F, 0315F, 72309, AU312127, 312128, 313127, 313128
1084(T).....	Aus 319, 322, AX 0319F, 0322F, AU314122, 314123
1085(T).....	Aus 322, 323, 324, AX 0322F
1086(T).....	Aus 324, AU418122
1087(T).....	Aus 55, 57
1088(T).....	Aus 62, 742
1089(T).....	Aus 328, AU320114, 321114
1090(T).....	Aus 64, 327, 328, 329, 742, 743, 744, 4723, 4725
1091(T).....	Aus 63, 64, 328, 742, 743, 4723, 4725
1092(T).....	Aus 64, 328, 329, 743, 744, AX 0415F, AU321114, 422114
1093(T).....	Aus 328, 744, 4708, 4723, 4725, INT 708, AX 4708F
1094(T).....	Aus 328, 743, 744, AU422114
1095(T).....	Aus 328, 329, 744
1096(T).....	Aus 117, 754, 755, AX 0754E, 0755E, 66002, 70117
1097(T).....	Aus 777, AU435136
1098(T).....	Aus 139, 780, 781
1099(T).....	Aus 155, AU438144, 5155P1
1100(T).....	Aus 154, 155
1101(T).....	Aus 143, AU5143P1
1102(T).....	Aus 181, 182, AU439146
1103(T).....	Temporary and Preliminary Notices

NUMERICAL INDEX OF CHARTS AFFECTED

Edition No 20

Aus Chart	Notices	Aus Chart	Notices
Aus 6.....	1055	Aus 345	1039
Aus 55.....	1087(T)	Aus 346	1061
Aus 57.....	1058, 1087(T)	Aus 367	1077(T)
Aus 58.....	1058	Aus 376	1054
Aus 59.....	1059	Aus 387	1053
Aus 62.....	1088(T)	Aus 444	1061
Aus 63.....	1091(T)	Aus 678	1039
Aus 64.....	1060, 1090(T), 1091(T), 1092(T)	Aus 700	1054
Aus 117.....	1096(T)	Aus 728	1057
Aus 125.....	1063	Aus 741	1058
Aus 139.....	1062, 1098(T)	Aus 742	1088(T), 1090(T), 1091(T)
Aus 143.....	1101(T)	Aus 743	1060, 1090(T), 1091(T), 1092(T), 1094(T)
Aus 154.....	1100(T)	Aus 744	1090(T), 1092(T), 1093(T), 1094(T), 1095(T)
Aus 155.....	1099(T), 1100(T)	Aus 754	1096(T)
Aus 158.....	1064	Aus 755	1096(T)
Aus 164.....	1076(T)	Aus 777	1097(T)
Aus 181.....	1065, 1102(T)	Aus 780	1039, 1098(T)
Aus 182.....	1102(T)	Aus 781	1039, 1098(T)
Aus 202.....	1040	Aus 809	1042
Aus 204.....	1041	Aus 814	1046, 1067(T)
Aus 219.....	1043	Aus 817	1047
Aus 220.....	1044	Aus 820	1077(T)
Aus 230.....	1045	Aus 822	1077(T)
Aus 235.....	1046, 1073(T)	Aus 830	1049
Aus 236.....	1046, 1068(T), 1069(T), 1070(T), 1071(T), 1072(T)	Aus 832	1050
Aus 237.....	1072(T)	Aus 833	1051
Aus 241.....	1047	Aus 4604	1052
Aus 244.....	1074(T), 1076(T)	Aus 4708	1093(T)
Aus 245.....	1074(T), 1075(T), 1076(T)	Aus 4723	1090(T), 1091(T), 1093(T)
Aus 248.....	1077(T)	Aus 4725	1090(T), 1091(T), 1093(T)
Aus 249.....	1078(T)	AX 0249E	1078(T)
Aus 250.....	1078(T)	AX 0260E	1077(T)
Aus 256.....	1079(T), 1080(T)	AX 0309F	1083(T)
Aus 257.....	1079(T), 1080(T)	AX 0315F	1083(T)
Aus 258.....	1081(T)	AX 0319F	1057, 1084(T)
Aus 260.....	1077(T)	AX 0322F	1084(T), 1085(T)
Aus 261.....	1077(T)	AX 0343E	1061
Aus 267.....	1048	AX 0367E	1077(T)
Aus 270.....	1082(T)	AX 0415F	1092(T)
Aus 296.....	1054	AX 0754E	1096(T)
Aus 303.....	1055	AX 0755E	1096(T)
Aus 305.....	1056	AX 0809E	1042
Aus 309.....	1083(T)	AX 0820E	1077(T)
Aus 315.....	1083(T)	AX 0822E	1077(T)
Aus 318.....	1057	AX 4604F	1052
Aus 319.....	1057, 1084(T)	AX 4708F	1093(T)
Aus 322.....	1084(T), 1085(T)	AX 60260	1077(T)
Aus 323.....	1085(T)	AX 6027S	1049
Aus 324.....	1085(T), 1086(T)	AX 66002	1096(T)
Aus 327.....	1090(T)	AX 67248	1077(T)
Aus 328.....	1060, 1089(T), 1090(T), 1091(T), 1092(T), 1093(T), 1094(T), 1095(T)	AX 67261	1077(T)
Aus 329.....	1090(T), 1092(T), 1095(T)	AX 70117	1096(T)
Aus 343.....	1061	AX 72309	1083(T)

INT Chart	Notices
INT 604	1052
INT 708	1093(T)
<hr/>	
ENC Cell	Notices
AU312127	1083(T)
AU312128	1083(T)
AU313127	1083(T)
AU313128	1083(T)
AU314122	1084(T)
AU314123	1084(T)
AU320114	1089(T)
AU320121	1039
AU321114	1089(T), 1092(T)
AU418122	1086(T)
AU422114	1092(T), 1094(T)
AU422149	1078(T)
AU423150	1077(T)
AU428153	1067(T), 1068(T), 1069(T), 1072(T)
AU435136	1097(T)
AU438144	1099(T)
AU439146	1102(T)
AU5143P1	1101(T)
AU5155P1	1099(T)
AU5164P1	1076(T)
AU5237X8	1070(T), 1071(T), 1072(T)
AU5244X5	1075(T), 1076(T)
AU5XX248	1077(T)
AU5250P2	1078(T)
AU5261P1	1077(T)
AU5261P2	1077(T)
AU5270P1	1082(T)

1039 AUSTRALIA - General

Australian Hydrographic Service (AA497313, AA497314)

New Electronic Navigation Chart (Seafarer ENC)

<i>Cell Name</i>	<i>Released</i>	<i>Title</i>
AU320121	October 2010	Western Australia - Patterson Shoals

New Chart to be published shortly

<i>Chart</i>	<i>Title</i>	<i>Scale</i>	<i>Expected Publication Date</i>	<i>Expected Stock Availability</i>
Aus 678	Papua New Guinea - New Britain - North Coast - Garove Island	1:25 000	8 October 2010	15 October 2010
Aus 780	Australia - South Coast - South Australia - Investigator Strait and Backstairs Passage	1:150 000	8 October 2010	15 October 2010
Aus 781	Australia - South Coast - South Australia - Gulf St Vincent	1:150 000	8 October 2010	15 October 2010

Chart to be permanently withdrawn without replacement

<i>Chart</i>	<i>On publication of new chart</i>
Aus 345	Aus 780 and Aus 781

For further details refer to the AHS website at www.hydro.gov.au for new edition and new chart stock arrival information.

When placing orders with a chart agent, mariners should advise whether their order pertains to the current edition or the new edition.

1040* AUSTRALIA - NEW SOUTH WALES - Port Jackson - Glebe Island - Lights

Sydney Ports Corporation (AA451804 - AA451808)

Aus 202 [987/2010]

Insert	accompanying block	33° 52'.1 S	151° 11'.2 E
--------	--------------------	-------------	--------------

1041* AUSTRALIA - NEW SOUTH WALES - Berowra Creek to Terrigal - Light buoys established; light buoy repositioned

NSW Maritime (AA494462, AA494463)

Aus 204 [947/2010]

Insert	starboard lateral conical light buoy, <i>Fl.G.5s</i> , without topmark	33° 34'.362 S	151° 07'.849 E
	starboard lateral conical light buoy, <i>Fl.G.5s</i> , without topmark	33° 35'.548 S	151° 07'.061 E
	port lateral cylindrical light buoy, <i>Fl.R.5s</i> , without topmark	33° 35'.729 S	151° 07'.383 E
Move	light buoy	33° 26'.68 S	151° 26'.87 E
	to	33° 26'.694 S	151° 26'.928 E

1042* AUSTRALIA - NEW SOUTH WALES - Swansea - Light buoys repositioned

NSW Maritime (AA494462, AA494463)

Aus 809 (plan, Lake Macquarie Entrance) [893/2010]

Move	light buoy	33° 04'.63 S	151° 38'.31 E
	to	33° 04'.588 S	151° 38'.328 E
	light buoy	33° 04'.76 S	151° 38'.29 E
	to	33° 04'.762 S	151° 38'.300 E

Delete	depth, 2 ₂ m	33° 04'.56 S	151° 38'.34 E
--------	-------------------------	--------------	---------------

AX 0809E (plan, Lake Macquarie Entrance) [893/2010]

Move	light buoy	33° 04'.63 S	151° 38'.31 E
	to	33° 04'.588 S	151° 38'.328 E
	light buoy	33° 04'.76 S	151° 38'.29 E
	to	33° 04'.762 S	151° 38'.300 E

Delete	depth, 2 ₂ m	33° 04'.56 S	151° 38'.34 E
--------	-------------------------	--------------	---------------

1043* AUSTRALIA - NEW SOUTH WALES - Wallis Lake - Light buoy established; beacon established

NSW Maritime (AA494462, AA494463)

Aus 219 (plan, Cape Hawke Harbour) [825/2010]

Insert	starboard lateral spar light buoy, <i>Fl.G.3s</i> , without topmark	32° 11'.442 S	152° 30'.085 E
	special beacon, with topmark	32° 10'.930 S	152° 30'.065 E

1044* AUSTRALIA - NEW SOUTH WALES - Trial Bay - Macleay River - Light buoys established; light buoy repositioned

NSW Maritime (AA494462, AA494463)

Aus 220 (plan, Trial Bay) [353/2010]

Insert	special conical buoy, without topmark	30° 53'.763 S	153° 00'.870 E
	special conical buoy, without topmark	30° 53'.522 S	153° 00'.977 E
	special conical buoy, without topmark	30° 53'.508 S	153° 00'.901 E
	special conical buoy, without topmark	30° 53'.772 S	153° 00'.942 E

Delete	buoy	30° 53'.74 S	153° 00'.92 E
--------	------	--------------	---------------

1045* AUSTRALIA - QUEENSLAND - Nerang Head - Light removed

Maritime Safety Queensland Notice 805/2010 (AA495104)

Aus 230 [1411/2009]

Delete	light	27° 56'.31 S	153° 25'.95 E
--------	-------	--------------	---------------

1046* AUSTRALIA - QUEENSLAND - Moreton Bay - Skirmish Passage - Wreck

Former Notice - 377(T)/2009 is cancelled
Maritime Safety Queensland (AA495081)

Aus 235 [988/2010]

Insert	depth, 9m, enclosed by danger circle with legend, <i>Wk</i>	26° 59'.63 S	153° 10'.88 E
--------	---	--------------	---------------

Aus 236 [988/2010]

Insert	depth, 9m, enclosed by danger circle with legend, <i>Wk</i>	26° 59'.63 S	153° 10'.88 E
--------	---	--------------	---------------

Aus 814 [735/2010]

Insert	depth, 9m, enclosed by danger circle with legend, <i>Wk</i>	26° 59'.73 S	153° 10'.82 E
Delete	depth, 11 ₆ m	26° 59'.7 S	153° 11'.3 E

1047* AUSTRALIA - QUEENSLAND - Great Sandy Strait - Little Woody Island - Marine farm removed

Maritime Safety Queensland Notice 774/2010 (AA494840)

Aus 241 [990/2010]

Delete	light buoy	25° 18'.6 S	153° 02'.0 E
	marine farm with legend, (see Note), centred on	25° 18'.6 S	153° 02'.0 E

Aus 817 [814/2009]

Delete	marine farm, centred on	25° 18'.6 S	153° 02'.0 E
--------	-------------------------	-------------	--------------

1048* AUSTRALIA - QUEENSLAND - Lucinda - Light buoy repositioned

Former Notice - 463(T)/2008 is cancelled
Maritime Safety Queensland (AA330646, AA494668)

Aus 267 [476/2010]

Move	light buoy	18° 30'.11 S	146° 18'.83 E
	to	18° 30'.426 S	146° 19'.125 E

1049* AUSTRALIA - QUEENSLAND - Upolu Reef - Obstruction

Former Notice - 446(T)/2009 is cancelled
Department of Defence (AA496051, AA496352)

Aus 830 [740/2010]

Insert	depth, 32m, enclosed by danger circle with legend <i>Obstn</i>	16° 41'.44 S	145° 52'.17 E
Delete	depth, 30 ₅ m	16° 41'.2 S	145° 52'.4 E

AX 6027S [740/2010]

Insert	depth, 32m, enclosed by danger circle with legend <i>Obstn</i>	16° 41'.44 S	145° 52'.17 E
Delete	depth, 30 ₅ m	16° 41'.2 S	145° 52'.4 E

1050* AUSTRALIA - QUEENSLAND - Great Barrier Reef - Marine reserve limit

Australian Hydrographic Service (AA495083)

Aus 832 [833/2010]

Delete	marine reserve limit, between	15° 02'.1 S	146° 00'.9 E
		14° 16'.0 S	145° 37'.9 E

1051* AUSTRALIA - QUEENSLAND - Great Barrier Reef - Shoaling

I Fanning (AA496259)

Aus 833 [541/2010]

Insert	danger line, between	13° 44'.0 S	144° 13'.4 E
		13° 44'.9 S	144° 14'.3 E

1052* AUSTRALIA - CORAL SEA - Mellish Reef - Light buoy established northeastwards

Former Notice - 808(T)/2010 is cancelled

Bureau of Meteorology (AA496017)

Aus 4604 (INT 604) [543/2010]

Insert	red and white cylindrical light buoy, <i>Fl.Y.2s</i> , without topmark	15° 47'.9 S	158° 24'.0 E
--------	--	-------------	--------------

Delete	light buoy	15° 47'.0 S	158° 31'.0 E
--------	------------	-------------	--------------

AX 4604F [543/2010]

Insert	red and white cylindrical light buoy, <i>Fl.Y.2s</i> , without topmark	15° 47'.9 S	158° 24'.0 E
--------	--	-------------	--------------

Delete	light buoy	15° 47'.0 S	158° 31'.0 E
--------	------------	-------------	--------------

1053* PAPUA NEW GUINEA - Long Island - Depths

Geoscience Australia (DHDB 1449446)

Aus 387 [903/2010]

Insert	accompanying block	5° 10'.0 S	147° 05'.0 E
--------	--------------------	------------	--------------

1054* AUSTRALIA - QUEENSLAND - Proudfoot Shoal - Depths

LADS Flight (DHDB 243532)

Aus 296 [836/2010]

Insert	depth, 13 ₇ m, enclosed by contour	10° 32'.6 S	141° 30'.7 E
--------	---	-------------	--------------

Aus 376 [904/2010]

Insert	depth, 13 ₇ , and extend contour W to enclose	10° 32'.51 S	141° 30'.76 E
	depth, 11 ₈ , and extend contour NW to enclose	10° 31'.93 S	141° 25'.80 E

Substitute	depth, 12 ₉ , for depth, 14 ₉ m	10° 31'.0 S	141° 26'.0 E
------------	---	-------------	--------------

Delete	depth, 14 ₉ m	10° 32'.9 S	141° 31'.8 E
	depth, 14 ₆ m	10° 32'.4 S	141° 26'.5 E

Aus 700 [904/2010]

Insert	depth, 12 ₉ , enclosed by contour	10° 30'.92 S	141° 25'.80 E
	depth, 11 ₈ , enclosed by contour	10° 31'.93 S	141° 25'.80 E
	depth, 13 ₉ , and extend 15m contour SW to enclose	10° 32'.12 S	141° 26'.81 E
	depth, 13 ₇ , enclosed by contour	10° 32'.51 S	141° 30'.76 E

Delete	depth, 15 ₁ m	10° 30'.9 S	141° 26'.0 E
	depth, 15 ₇ m	10° 31'.9 S	141° 26'.3 E
	depth, 15 ₁ m	10° 32'.9 S	141° 31'.0 E

1055* AUSTRALIA - QUEENSLAND - Karumba - Obstruction

Former Notice - 937(T)/2007 is cancelled
Maritime Safety Queensland (AA484571)

Aus 6 [786/2010]

Insert	danger circle with legend, <i>Obstr</i>	17° 27'.80 S	140° 44'.83 E
--------	---	--------------	---------------

Aus 303 [204/2010]

Insert	danger circle with legend, <i>Obstr</i>	17° 27'.80 S	140° 44'.83 E
--------	---	--------------	---------------

1056* AUSTRALIA - NORTHERN TERRITORY - Vanderlin Island to Cape Grey - ZOC diagram

Australian Hydrographic Service (AA318722)

Aus 305 [905/2010]

Substitute	accompanying ZOC diagram	14° 00'.0 S	135° 33'.0 E
------------	--------------------------	-------------	--------------

1057* AUSTRALIA - WESTERN AUSTRALIA - West Holothuria Reef - Depth

HMAS *Leeuwin* (AA495444)

Aus 318 [1311/2009]

Insert	depth, <i>8m</i> , enclosed by contour	13° 32'.30 S	125° 49'.86 E
--------	--	--------------	---------------

Aus 319 [546/2010]

Insert	depth, <i>8m</i> , enclosed by contour	13° 32'.22 S	125° 49'.92 E
--------	--	--------------	---------------

Aus 728 [1221/2009]

Insert	depth, <i>8₂m</i> , enclosed by contour	13° 32'.22 S	125° 49'.92 E
--------	--	--------------	---------------

Delete	depth, 20 ₁ m	13° 32'.3 S	125° 49'.5 E
--------	--------------------------	-------------	--------------

AX 0319F [546/2010]

Insert	depth, <i>8m</i> , enclosed by contour	13° 32'.22 S	125° 49'.92 E
--------	--	--------------	---------------

1058* AUSTRALIA - WESTERN AUSTRALIA - Dampier - Depths

Dampier Port Authority Notice 32/2010 (AA490751), Woodside Energy Ltd (DHDB 1579089)

Aus 57 [953/2010]

Insert	accompanying block	20° 22'.0 S	116° 43'.0 E
--------	--------------------	-------------	--------------

Aus 58 [953/2010]

Insert	accompanying block	20° 22'.5 S	116° 43'.5 E
--------	--------------------	-------------	--------------

Aus 741 [953/2010]

Insert	accompanying block	20° 20'.0 S	116° 43'.0 E
--------	--------------------	-------------	--------------

1059* AUSTRALIA - WESTERN AUSTRALIA - Dampier - King Bay - Light beacons

Dampier Port Authority Notice 42/2010 (AA496268, AA496270, AA496271)

Aus 59 (plan, Withnell Bay to King Bay) [299/2010]

Substitute	light beacon, <i>Q</i> , with triangular topmark apex up for beacon	20° 38'.03 S	116° 45'.26 E
	light beacon, <i>Iso.4s</i> , with triangular topmark apex down for beacon	20° 38'.03 S	116° 45'.32 E

1060* AUSTRALIA - WESTERN AUSTRALIA - Onslow - Depths; aeronautical beacon

LADS Flight (DHDB 1047294)

Aus 64 [300/2010]

Insert	depth, 4 ₃ m, enclosed by contour	21° 34'.02 S	115° 07'.96 E
	depth, 2 ₁ m, enclosed by contour	21° 32'.86 S	115° 07'.79 E
	depth, 3 ₅ m, and extend contour SW to enclose	21° 32'.22 S	115° 06'.78 E
	depth, 3 ₈ m, enclosed by contour	21° 33'.59 S	115° 06'.34 E
	depth, 1 ₅ m, and extend contour NW to enclose	21° 34'.14 S	115° 03'.50 E
	depth, 3 ₃ m, and extend contour SW to enclose	21° 34'.29 S	115° 01'.52 E
Delete	depth, 5m, and enclosing contour	21° 33'.9 S	115° 07'.9 E
	depth, 6 ₃ m	21° 34'.1 S	115° 08'.0 E
	depth, 6 ₉ m	21° 32'.9 S	115° 07'.5 E
	depth, 6 ₃ m	21° 32'.3 S	115° 06'.7 E
	depth, 1 ₈ m	21° 34'.2 S	115° 03'.6 E

Aus 64 (plan, Onslow)

Insert	depth, 0 ₂ m, enclosed by contour	21° 39'.140 S	115° 04'.064 E
--------	--	---------------	----------------

Aus 328 [746/2010]

Insert	depth, 0 ₂ m, enclosed by contour	21° 39'.22 S	115° 03'.99 E
	depth, 4 ₃ m, enclosed by contour	21° 34'.10 S	115° 07'.89 E
	depth, 2 ₁ m, enclosed by contour	21° 32'.94 S	115° 07'.72 E
	depth, 3 ₅ m, and extend contour SW to enclose	21° 32'.30 S	115° 06'.71 E
Substitute	depth, 1 ₅ m, for depth, 1 ₈ m	21° 34'.2 S	115° 03'.5 E
Delete	depth, 3 ₃ m	21° 39'.7 S	115° 04'.0 E
	aero beacon	22° 14'.6 S	114° 05'.5 E
	aero beacon	21° 39'.6 S	115° 06'.5 E

Aus 743 [746/2010]

Insert	depth, 0 ₂ m, enclosed by contour	21° 39'.14 S	115° 04'.06 E
	depth, 4 ₃ m, enclosed by contour	21° 34'.02 S	115° 07'.96 E
	depth, 2 ₁ m, enclosed by contour	21° 32'.86 S	115° 07'.79 E
	depth, 3 ₅ m, and extend contour SW to enclose	21° 32'.22 S	115° 06'.78 E
	depth, 3 ₈ m, enclosed by contour	21° 33'.59 S	115° 06'.34 E
	depth, 1 ₅ m, and extend contour NW to enclose	21° 34'.14 S	115° 03'.50 E
Delete	depth, 1 ₇ m, and enclosing contour	21° 39'.0 S	115° 04'.0 E
	depth, 5 ₁ m	21° 33'.9 S	115° 07'.9 E
	depth, 7m	21° 32'.9 S	115° 07'.5 E
	depth, 6 ₄ m	21° 32'.3 S	115° 06'.7 E
	depth, 2 ₄ m	21° 32'.0 S	115° 07'.0 E
	depth, 7 ₆ m	21° 33'.6 S	115° 06'.0 E
	depth, 1 ₉ m	21° 34'.2 S	115° 03'.6 E
	aero beacon	21° 39'.6 S	115° 06'.5 E

1061* AUSTRALIA - SOUTH AUSTRALIA - Kangaroo Island - Depths

LADS Flight (DHDB 1612014)

Aus 343 [796/2010]

Insert	depth, 28 ₂ m, enclosed by contour	36° 00'.78 S	136° 33'.65 E
	depth, 36m, enclosed by contour	36° 04'.50 S	136° 34'.21 E
	depth, 28m, enclosed by contour	36° 09'.35 S	136° 47'.02 E
	depth, 13 ₇ m, enclosed by contour	36° 04'.82 S	136° 45'.48 E
	depth, 8 ₇ m, and extend 10m contour NW to enclose	36° 05'.62 S	136° 38'.97 E

Substitute	above water rock enclosed by danger circle for depth, 8m	36° 09'.5 S	136° 50'.1 E
	depth, 20m, for depth, 47m	36° 07'.5 S	136° 50'.0 E

Delete	rock and enclosing danger circle	36° 09'.1 S	136° 49'.4 E
	legend, Rep(1960)	36° 07'.2 S	136° 38'.8 E
	depth, 14 ₆ m	36° 05'.9 S	136° 39'.6 E

Aus 346 [262/2010]

Insert	depth, 16fm, enclosed by contour	36° 00'.35 S	136° 33'.60 E
	depth, 19fm, enclosed by contour	36° 04'.53 S	136° 33'.79 E
	depth, 15fm, enclosed by contour	36° 09'.38 S	136° 46'.60 E
	depth, 11fm, enclosed by contour	36° 07'.96 S	136° 49'.63 E
	depth, 7fm, enclosed by contour	36° 04'.85 S	136° 45'.06 E
	depth, 4 ₄ fm, and extend 6fm contour NW to enclose	36° 05'.70 S	136° 38'.97 E

Substitute	above water rock enclosed by danger circle for depth, 4 ₂ fm	36° 09'.6 S	136° 50'.0 E
------------	---	-------------	--------------

Delete	rock and enclosing danger circle	36° 09'.3 S	136° 49'.5 E
	legend, Rep(1960)	36° 06'.6 S	136° 40'.7 E
	depth, 8fm	36° 06'.1 S	136° 39'.0 E
	depth, 18fm	36° 04'.5 S	136° 44'.7 E

Aus 444 [798/2010]

Insert	depth, 19fm	36° 04'.53 S	136° 33'.79 E
	depth, 11fm	36° 07'.96 S	136° 49'.63 E
	depth, 7fm	36° 04'.85 S	136° 45'.06 E
	depth, 4 ₄ fm, and extend 6fm contour NW to enclose	36° 05'.70 S	136° 38'.97 E

Substitute	depth, 16fm, for depth, 38fm	36° 00'.0 S	136° 34'.2 E
	depth, 15fm, for depth, 45fm	36° 09'.0 S	136° 47'.3 E
	above water rock enclosed by danger circle for depth, 4½fm	36° 10'.0 S	136° 50'.5 E

Delete	rock and enclosing danger circle	36° 09'.8 S	136° 49'.9 E
	depth, 28fm	36° 06'.9 S	136° 50'.5 E
	legend, Rep(1960)	36° 07'.7 S	136° 41'.8 E
	depth, 8fm	36° 06'.1 S	136° 39'.5 E
	depth, 15fm	36° 05'.3 S	136° 44'.2 E
	depth, 18fm	36° 05'.3 S	136° 45'.1 E

1061* AUSTRALIA - SOUTH AUSTRALIA - Kangaroo Island – Depths (continued)**AX 0343E [796/2010]**

Insert	depth, 28 ₂ m, enclosed by contour	36° 00'.78 S	136° 33'.65 E
	depth, 36m, enclosed by contour	36° 04'.50 S	136° 34'.21 E
	depth, 28m, enclosed by contour	36° 09'.35 S	136° 47'.02 E
	depth, 13 ₇ m, enclosed by contour	36° 04'.82 S	136° 45'.48 E
	depth, 8 ₇ m, and extend 10m contour NW to enclose	36° 05'.62 S	136° 38'.97 E
Substitute	above water rock enclosed by danger circle for depth, 8m	36° 09'.5 S	136° 50'.1 E
	depth, 20m, for depth, 47m	36° 07'.5 S	136° 50'.0 E
Delete	rock and enclosing danger circle	36° 09'.1 S	136° 49'.4 E
	legend, Rep(1960)	36° 07'.2 S	136° 38'.8 E
	depth, 14 ₆ m	36° 05'.9 S	136° 39'.6 E

1062* AUSTRALIA - SOUTH AUSTRALIA - Macdonnell Sound - Troubridge Shoals - Historic wreck; legend
Australian Hydrographic Service (AA496633)**Aus 139 (plan, Macdonnell Sound) [1001/2010]**

Insert	# with magenta legend, <i>Historic Wk (see Note)</i>	35° 09'.61 S	137° 48'.53 E
	magenta legend, <i>Military Exercise Area (see Note)</i> , centred on	35° 05'.5 S	137° 51'.5 E
Delete	depth, 12 ₈ m	35° 09'.7 S	137° 48'.5 E

1063* AUSTRALIA - SOUTH AUSTRALIA - Port Stanvac - Obstructions; aeronautical beacons

Former Notice - 87(T)/2010 is cancelled
AdelaideAqua (AA494905, AA494906)

Aus 125 (plan, Port Stanvac) [748/2010]

Insert	depth, 12 ₃ m, enclosed by danger circle with legend, <i>Obstn</i>	35° 05'.511 S	138° 27'.997 E
	depth, 16 ₆ m, enclosed by danger circle with legend, <i>Obstn</i>	35° 05'.615 S	138° 28'.153 E
	depth, 16 ₆ m, enclosed by danger circle with legend, <i>Obstn</i>	35° 05'.648 S	138° 28'.236 E
Delete	depth, 16 ₂ m	35° 05'.65 S	138° 28'.09 E
	aero beacon	35° 05'.9 S	138° 29'.5 E

1064* AUSTRALIA - VICTORIA - Port Phillip - South Channel - Depth

Australian Hydrographic Service (AA496266)

Aus 158 [800/2010]

Insert	depth, 9 ₈ m, enclosed by contour	38° 20'.115 S	144° 54'.015 E
--------	--	---------------	----------------

1065* AUSTRALIA - VICTORIA - Corner Inlet - Fanklin River - Light buoys established

Victorian Notice 96/2010 (AA496369, AA496131 - AA496137)

Aus 181 [604/2010]

Insert	starboard lateral pillar light buoy, <i>Fl(3)G.8s No1</i> , with topmark	38° 45'.53 S	146° 24'.70 E
	port lateral pillar light buoy, <i>Fl(3)R.8s No2</i> , with topmark	38° 45'.84 S	146° 25'.24 E
	starboard lateral pillar light buoy, <i>Fl(2)G.6s No3</i> , with topmark	38° 45'.59 S	146° 22'.74 E
	port lateral pillar light buoy, <i>Fl(2)R.6s No4</i> , with topmark	38° 46'.05 S	146° 22'.76 E
	safe water pillar light buoy, <i>Iso.2s</i> , with topmark	38° 45'.74 S	146° 26'.35 E
Delete	depth, 0 ₆ m	38° 45'.5 S	146° 24'.7 E
	depth, 13 ₆ m	38° 45'.6 S	146° 24'.6 E
	depth, 6 ₄ m	38° 45'.9 S	146° 25'.3 E
	depth, 0 ₆ m	38° 45'.5 S	146° 22'.8 E
	depth, 2 ₈ m	38° 46'.1 S	146° 22'.8 E
	depth, 15 ₈ m	38° 45'.7 S	146° 26'.3 E

1066 AUSTRALIA - Product - Cumulative List of Australian Notices to Mariners - October 2010

Australian Hydrographic Service (AA465826)

The Cumulative List of Australian Notices to Mariners - October 2010 is issued as an accompanying supplement. It lists all permanent notices affecting charts in the Area of Australian Charting Responsibility published in the preceding two years since Edition 20 of 2008 dated 10 October 2008, and includes Edition 20 of 2010 dated 8 October 2010. It will be revised in April 2011.

A supplement is available on the website which is revised fortnightly.

1067(T)/2010 AUSTRALIA - QUEENSLAND - Moreton Island - Obstruction removed

Former Notice - 1008(T)/2010 is cancelled

Maritime Safety Queensland Notice 833(T)/2010 (AA496804)

Cancel this notice on receipt.

Chart formerly affected - Aus 814 - AU428153**1068(T)/2010 AUSTRALIA - QUEENSLAND - Moreton Bay - Ship to ship transfer**

Former Notice - 802(T)/2010 is cancelled

Date - Until 1 December 2010

Maritime Safety Queensland Notice 853(T)/2010 (AA497016)

Ship to ship transfer of LPG will be conducted at STS1 anchorage (27° 17'.25 S 153° 16'.56 E). An exclusion zone (1850 metres radius) exists around transfer operations.

Chart temporarily affected - Aus 236 - AU428153**1069(T)/2010 AUSTRALIA - QUEENSLAND - Moreton Bay - Dunwich - Harbour works**

Date - Until 31 October 2010

Maritime Safety Queensland Notice 839(T)/2010 (AA496757)

Works associated with the construction of a pontoon are in progress (27° 29'.62 S 153° 24'.16 E).

The barge, *Barracuda*, will display appropriate lights and shapes.

Mariners are advised to navigate with caution in the area.

Chart temporarily affected - Aus 236 - AU428153**1070(T)/2010 AUSTRALIA - QUEENSLAND - Moreton Bay - Manly - Light beacon re-established**

Former Notice - 709(T)/2010 is cancelled

Maritime Safety Queensland Notice 868/2010 (AA97400)

Cancel this notice on receipt.

Chart formerly affected - Aus 236 - AU5237X8**1071(T)/2010 AUSTRALIA - QUEENSLAND - Moreton Bay - Manly - Harbour works**

Date - Until 30 November 2010

Maritime Safety Queensland Notice 830(T)/2010 (AA496815)

Works associated with the construction of a berth are in progress (27° 27'.12 S 153° 11'.47 E).

Mariners are advised to navigate with caution in the area.

Chart temporarily affected - Aus 236 - AU5237X8**1072(T)/2010 AUSTRALIA - QUEENSLAND - Brisbane River - Old Bar Cutting - Light beacon re-established**

Former Notice - 127(T)/2010 is cancelled

Maritime Safety Queensland Notice 866/2010 (AA497406)

Cancel this notice on receipt.

Chart formerly affected - Aus 236 - Aus 237 - AU428153 - AU5237X8

1073(T)/2010 AUSTRALIA - QUEENSLAND - Mooloolaba - Shoaling

Former Notices - 438(T)/2010, 757(T)/2010 are cancelled
 Maritime Safety Queensland Notice 859(T)/2010 (AA497297)

Shoaling, with a least depth of 3.1m (LAT), exists within the entrance and approach channel to Mooloolah River.

Shoaling with a least depth of 2.1m exists between light beacon No1 (26° 40'.81 S 153° 07'.94 E) and No3 (26° 40'.86 S 153° 08'.01 E), along the starboard side of the channel.

Mariners are advised to navigate with caution in the area.

Chart temporarily affected - Aus 235**1074(T)/2010 AUSTRALIA - QUEENSLAND - Gladstone - Dredging operations**

Former Notice - 758(T)/2010 is cancelled
Date - Until 18 January 2011
 Maritime Safety Queensland Notice 844(T)/2010 (AA496792)

The dredge, *Wombat*, is conducting dredging operations in the areas bounded by the following positions:

23° 46'.79 S 151° 11'.99 E
 23° 46'.92 S 151° 11'.98 E
 23° 46'.92 S 151° 11'.91 E
 23° 46'.75 S 151° 12'.93 E

and

23° 49'.25 S 151° 14'.37 E
 23° 49'.40 S 151° 14'.49 E
 23° 49'.41 S 151° 14'.44 E
 23° 49'.36 S 151° 14'.38 E.

The dredge will monitor VHF Ch 14 and Ch 16 and display appropriate lights and shapes.

Mariners are advised to navigate with caution in the area.

Chart temporarily affected - Aus 244 - Aus 245**1075(T)/2010 AUSTRALIA - QUEENSLAND - Gladstone - Calliope River - Harbour works completed**

Former Notice - 923(T)/2010 is cancelled
 Maritime Safety Queensland Notice 695(T)/2010 (AA486288)

Cancel this notice on receipt.

Chart formerly affected - Aus 245 - AU5244X5**1076(T)/2010 AUSTRALIA - QUEENSLAND - Gladstone - Harbour works completed**

Former Notice - 1016(T)/2010 is cancelled
 Maritime Safety Queensland Notice 794(T)/2010 (AA494833)

Cancel this notice on receipt.

Chart formerly affected - Aus 164 - Aus 244 - Aus 245 - AU5164P1 - AU5244X5

1077(T)/2010 AUSTRALIA - QUEENSLAND - Shoalwater Bay - Live firing*Former Notice* - 969(T)/2010 is cancelled*Date* - Until 25 November 2010

Maritime Safety Queensland Notice 842(T)/2010 (AA496779)

Live firing activities will be conducted in the Shoalwater Bay training area during the period 26 September to 21 October 2010 and 2 November to 8 November 2010 within Marine Danger Area 1 and 26 September to 24 November 2010 within Marine Danger Area 2.

A marine danger area extends to all internal waters bounded by the following positions (WGS84 datum):

Marine Danger Area 1

22° 21'.20 S 150° 10'.52 E
 22° 20'.35 S 150° 12'.00 E
 22° 16'.94 S 150° 12'.07 E
 22° 14'.92 S 150° 20'.06 E
 22° 14'.76 S 150° 20'.31 E
 22° 09'.00 S 150° 25'.00 E
 22° 09'.00 S 150° 37'.00 E
 22° 14'.38 S 150° 37'.00 E
 22° 19'.92 S 150° 45'.05 E
 22° 29'.13 S 150° 49'.71 E
 22° 31'.09 S 150° 43'.53 E
 22° 18'.98 S 150° 35'.98 E
 22° 21'.20 S 150° 10'.52 E.

Marine Danger Area 2

22° 21'.20 S 150° 10'.52 E
 22° 18'.98 S 150° 35'.98 E
 22° 31'.09 S 150° 43'.53 E
 22° 40'.00 S 150° 38'.00 E
 22° 21'.20 S 150° 10'.52 E.

All waters, creeks, beaches and other areas within the declared marine danger area are not available for access.

Mariners are advised to keep clear of this area throughout the above times.

Chart temporarily affected - Aus 248 - Aus 260 - Aus 261 - Aus 367 - Aus 820 - Aus 822 - AX 0260E - AX 0367E - AX 0820E - AX 0822E - AX 60260 - AX 67248 - AX 67261 - AU423150 - AU5261P1 - AU5261P2 - AU5XX248

1078(T)/2010 AUSTRALIA - QUEENSLAND - Hay Point - Dredging operations; mooring buoys*Former Notice* - 926(T)/2010 is cancelled*Date* - Until 30 November 2010

Maritime Safety Queensland Notices 455(T)/2010, 632(T)/2010, 709/2010, 854(T)/2010 (AA472440, AA483487, AA489856, AA497011)

Dredge *Hippopotes*, barges *Murray River* and *Yarra River*, MT *Black Panther* and support vessels are conducting dredging operations in the area to the south of DBCT berth No1 (21° 15'.00 S 149° 18'.36 E).

The tug will be towing the barges to the spoil ground (21° 11'.53 S 149° 18'.50 E).

Mooring buoys exist as follows:

<i>Position</i>	<i>Remarks</i>
21° 16'.04 S 149° 18'.76 E	unlit
21° 16'.19 S 149° 18'.86 E	unlit
21° 16'.13 S 149° 18'.67 E	unlit
21° 20'.65 S 149° 23'.20 E	lit, Fl. Y. 5s
21° 20'.85 S 149° 23'.18 E	lit, Fl. Y. 5s
21° 21'.11 S 149° 23'.39 E	lit, Fl. Y. 5s.

All vessels will monitor VHF Ch 14 and 16 and display appropriate lights and signals.

Mariners are advised to navigate with caution in the area.

Chart temporarily affected - Aus 249 - Aus 250 - AX 0249E - AU422149 - AU5250P2

1079(T)/2010 AUSTRALIA - QUEENSLAND - Townsville - Depth information

Former Notice - 678(T)/2010 is cancelled

Maritime Safety Queensland Notice 840(T)/2010 (AA496777)

Available depths as at 29 September 2010:

	<i>Metres</i>	<i>Remarks</i>
Sea Channel	11.8	
Platypus Channel	11.5	
<i>Outer Harbour:</i>		
* Arrival Channel	7.5	
* Departure Channel	11.4	
<i>Inner Harbour:</i>		
Harbour	11.9	
<i>Berths:</i>		
No 1	12.0	
No 2	12.1	
* No 3	11.9	
* No 4	10.4	
* No 7	10.9	
* No 8	9.3	
* No 9	11.9	
* No 10	9.7	From 10m mark to seaward dolphin
	9.0	From Ro-Ro ramp to 10m mark
* No 11	11.4	
Between No 7 and No 8	10.3	Seaward of zero mark at No 7
Between No 9 and No 10	10.6	Seaward of zero mark at No 10
* Ross River Channel	-	No declared depth
Ross Creek	-	No declared depth, dredging in progress

* Indicates revised entry.

Chart temporarily affected - Aus 256 - Aus 257**1080(T)/2010 AUSTRALIA - QUEENSLAND - Townsville - Scientific instruments**

Date - Until 30 June 2011

Maritime Safety Queensland Notices 838(T)/2010, 843(T)/2010 (AA496798, AA496782)

Scientific instruments exist as follows:

<i>Position</i>	<i>Remarks</i>
19° 14'.68 S 146° 51'.42 E	lit buoy, <i>Fl. Y.5s</i>
19° 14'.69 S 146° 51'.41 E	lit buoy, <i>Fl. Y.5s</i>
19° 16'.07 S 146° 50'.26 E	lit beacon, <i>Fl. Y.5s.</i>

Chart temporarily affected - Aus 256 - Aus 257**1081(T)/2010 AUSTRALIA - QUEENSLAND - Gladys Inlet - Shoaling; light buoys repositioned**

Former Notice - 1022(T)/2010 is cancelled

Maritime Safety Queensland Notices 802(T)/2010, 829(T)/2010 (AA494990, AA497025)

Shoaling exists in the entrance to Johnstone River (17° 30'.5 S 146° 04'.7 E).

The light buoys have been repositioned as follows:

<i>Chartered position</i>	<i>Current position</i>
17° 30'.37 S 146° 04'.76 E	17° 30'.40 S 146° 04'.86 E
17° 30'.51 S 146° 04'.50 E	17° 30'.44 S 146° 04'.44 E.

Mariners are advised to navigate with caution in the area.

Chart temporarily affected - Aus 258

1082(T)/2010 AUSTRALIA - QUEENSLAND - Port Douglas - Dredging operations completed

Former Notice - 928(T)/2010 is cancelled

Maritime Safety Queensland Notice 729(T)/2010 (AA490666)

Cancel this notice on receipt.

Chart formerly affected - Aus 270 - AU5270P1**1083(T)/2010 AUSTRALIA - TIMOR SEA - Seismic survey**

Former Notices - 812(T)/2010, 1027(T)/2010 are cancelled

Date - Until 27 October 2010

Murphy Oil Corporation (AA496810, AA496811)

RV *Aquila Explorer*, with a 10000m towed array, is conducting a survey in the area bounded by the following positions:

11° 59'.96 S 127° 58'.46 E

11° 52'.09 S 128° 08'.54 E

11° 52'.15 S 128° 13'.00 E

11° 53'.24 S 128° 15'.68 E

12° 00'.08 S 128° 24'.54 E

12° 01'.09 S 128° 29'.18 E

12° 06'.68 S 128° 28'.45 E

12° 17'.36 S 128° 10'.49 E.

Chart temporarily affected - Aus 309 - Aus 315 - AX 0309F - AX 0315F - AX 72309 - AU312127 - AU312128 - AU313127 - AU313128**1084(T)/2010 AUSTRALIA - WESTERN AUSTRALIA - Heywood Shoal - Seismic survey westwards**

Date - Until 30 October 2010

Total E&P Australia (AA497075, AA497076, AA497078)

Survey operations are in progress in an area bounded by the following positions:

13° 19'.03 S 123° 38'.17 E

13° 23'.30 S 123° 38'.18 E

13° 25'.33 S 123° 31'.82 E

13° 25'.37 S 122° 55'.07 E

13° 19'.08 S 122° 55'.07 E.

Chart temporarily affected - Aus 319 - Aus 322 - AX 0319F - AX 0322F - AU314122 - AU314123

1085(T)/2010 AUSTRALIA - WESTERN AUSTRALIA - Scott Reef to James Price Point - Scientific instruments*Former Notice* - 1462(T)/2009 is cancelled*Date* - Until 31 December 2010

Fugro Survey Pty Ltd (AA445251 - AA445256)

Scientific instruments exist as follows:

<i>Position</i>	<i>Remarks</i>
14° 56'.49 S 121° 45'.08 E	subsurface
14° 56'.64 S 121° 44'.94 E	subsurface
14° 59'.99 S 121° 46'.90 E	subsurface
15° 00'.14 S 121° 46'.78 E	subsurface
15° 03'.22 S 121° 47'.78 E	subsurface
15° 03'.43 S 121° 47'.52 E	lit buoy
15° 03'.68 S 121° 47'.68 E	subsurface
15° 06'.01 S 121° 45'.45 E	subsurface
15° 06'.07 S 121° 45'.44 E	lit buoy
15° 16'.32 S 121° 39'.64 E	lit buoy
15° 25'.75 S 121° 34'.57 E	lit buoy
15° 37'.38 S 121° 33'.86 E	lit buoy
15° 54'.51 S 121° 32'.71 E	lit buoy
16° 02'.60 S 121° 36'.95 E	lit buoy
16° 13'.24 S 121° 38'.81 E	lit buoy
16° 21'.49 S 121° 40'.77 E	lit buoy
16° 21'.55 S 121° 40'.59 E	lit buoy
16° 40'.16 S 121° 44'.88 E	lit buoy
16° 47'.64 S 121° 44'.63 E	lit buoy
17° 08'.58 S 121° 37'.58 E	lit buoy
17° 23'.81 S 121° 48'.39 E	lit buoy
17° 29'.40 S 122° 04'.66 E	lit buoy
17° 29'.45 S 121° 55'.32 E	lit buoy
17° 30'.26 S 122° 05'.84 E	lit buoy
17° 31'.03 S 121° 51'.55 E	lit buoy
17° 31'.19 S 122° 07'.52 E	lit buoy
17° 31'.20 S 122° 08'.53 E	lit buoy
17° 31'.26 S 122° 07'.45 E	lit buoy
17° 31'.26 S 122° 07'.59 E	lit buoy
17° 31'.75 S 122° 07'.51 E	lit buoy

Chart temporarily affected - Aus 322 - Aus 323 - Aus 324 - AX 0322F**1086(T)/2010 AUSTRALIA - WESTERN AUSTRALIA - James Price Point - Drilling operations***Date* - Until 15 November 2010

Department of Transport WA Notice 106/2010 (AA496797)

Jack-up barges *Sideson 1*, *Sideson 2* and *Sideson 3* and support vessels *Lobo*, *MV Fantasea Ammari* and *Wauri* are conducting drilling operations in an area bounded by the following positions:

17° 29'.58 S 122° 08'.82 E
 17° 29'.58 S 122° 05'.92 E
 17° 33'.38 S 122° 05'.92 E
 17° 33'.38 S 122° 08'.82 E.

A 100m radius exclusion zone exists around the barges during the works.

All vessels will display appropriate lights and shapes and support vessels will maintain a listening watch on VHF Ch 12 and 16.

Mariners are advised to navigate with caution in the area.

Chart temporarily affected - Aus 324 - AU418122

1087(T)/2010 AUSTRALIA - WESTERN AUSTRALIA - Delambre Island to Dixon Island - Drilling operations*Date* - Until 30 April 2011

Department of Transport WA Notice 88/2010 (AA497020)

Drilling operations are in progress in the area adjacent to Dixon Island (20° 37'.5 S 117° 04'.0 E) extending to 20° 25'.0 S 117° 02'.0 E, northwest of Delambre Island.

The barge and support vessels will display appropriate lights and shapes.

Mariners are advised to navigate with caution in the area.

Chart temporarily affected - Aus 55 - Aus 57**1088(T)/2010 AUSTRALIA - WESTERN AUSTRALIA - Barrow Island - Ant Point - Anchorage northeastwards**

Department of Transport WA Notice 89/2010 (AA497019)

An anchorage with a 300m radius swinging circle exists in position 20° 42'.2 S 115° 29'.8 E (WGS84 datum).

Mariners are advised to navigate with caution in the area.

Chart temporarily affected - Aus 62 - Aus 742**1089(T)/2010 AUSTRALIA - WESTERN AUSTRALIA - Barrow Island - Wells northwestwards***Former Notice* - 395(T)/2010 is cancelled*Date* - Until 23 December 2010

Chevron Australia Pty Ltd (AA463979)

Wells exist as follows;

<i>Position</i>	<i>Remarks</i>	<i>Depth (metres)</i>
19° 32'.99 S 114° 07'.80 E	Chandon 2	1168
19° 57'.21 S 114° 52'.73 E	Geryon 2	1219
20° 12'.91 S 114° 32'.23 E	Achilles 1	1151
20° 18'.48 S 114° 41'.25 E	Clio 3	971

Chart temporarily affected - Aus 328 - AU320114 - AU321114**1090(T)/2010 AUSTRALIA - WESTERN AUSTRALIA - Exmouth Plateau to Onslow - Seismic survey***Former Notice* - 523(T)/2010 is cancelled*Date* - Until 30 April 2011

Department of Transport WA Notice 53B/2010 (AA468756)

MV *Southern Supporter* and *Markab* are conducting a survey in the area bounded by the following positions (WGS84 datum):

21° 26'.13 S 114° 57'.85 E
 19° 54'.15 S 112° 53'.85 E
 19° 26'.41 S 113° 19'.08 E
 20° 42'.10 S 115° 19'.25 E
 21° 11'.01 S 115° 32'.00 E.

Chart temporarily affected - Aus 64 - Aus 327 - Aus 328 - Aus 329 - Aus 742 - Aus 743 - Aus 744 - Aus 4723 - Aus 4725

1091(T)/2010 AUSTRALIA - WESTERN AUSTRALIA - Thevenard Island to Exmouth Plateau - Scientific instruments*Former Notice - 79(T)/2010 is cancelled**Date - Until 31 January 2011*

Department of Transport WA Notice 1/2010 (AA447883, AA446614, AA446615)

Scientific instruments exist as follows:

<i>Position</i>	<i>Remarks</i>
19° 55'.44 S 113° 14'.28 E	subsurface
19° 55'.56 S 113° 13'.74 E	lit buoy, <i>Fl(5)Y.20s</i>
20° 35'.94 S 114° 43'.44 E	subsurface
20° 36'.48 S 114° 44'.88 E	subsurface
20° 37'.56 S 114° 47'.94 E	subsurface
20° 45'.48 S 114° 55'.92 E	subsurface
21° 08'.34 S 115° 18'.30 E	lit buoy, <i>Fl(5)Y.20s</i> and 2 white poly-floats
21° 20'.52 S 115° 03'.30 E	lit buoy, <i>Fl(5)Y.20s</i> and 2 white poly-floats
20° 59'.28 S 115° 09'.78 E	lit buoy, <i>Fl(5)Y.20s</i> and 2 white poly-floats
21° 02'.04 S 115° 10'.56 E	lit buoy, <i>Fl(5)Y.20s</i> and 2 white poly-floats
21° 12'.30 S 115° 09'.00 E	lit buoy, <i>Fl(5)Y.20s</i> and 2 white poly-floats

Chart temporarily affected - Aus 63 - Aus 64 - Aus 328 - Aus 742 - Aus 743 - Aus 4723 - Aus 4725**1092(T)/2010 AUSTRALIA - WESTERN AUSTRALIA - North West Cape - Scientific instruments recovered***Former Notice - 914(T)/2009 is cancelled*

Woods Hole Group (AA497373)

Cancel this notice on receipt.

Chart formerly affected - Aus 64 - Aus 328 - Aus 329 - Aus 743 - Aus 744 - AX 0415F - AU321114 - AU422114**1093(T)/2010 AUSTRALIA - WESTERN AUSTRALIA - Bessieres Island - FPSO off station northwestwards***Former Notice - 1464(T)/2009 is cancelled*

BHP Billiton Petroleum Pty Ltd (AA445247)

The FPSO Griffin Venture (21° 13'.25 S 114° 38'.90 E (WGS84 datum)) is off station.

Chart temporarily affected - Aus 328 - Aus 744 - Aus 4708 (INT 708) - Aus 4723 - Aus 4725 - AX 4708F**1094(T)/2010 AUSTRALIA - WESTERN AUSTRALIA - Peak Island to Rocky Point - Drilling operations***Date - Until 18 October 2010*

BHP Billiton Petroleum Pty Ltd (AA497081, AA497082)

MV *Silver Star* is conducting drilling operations in the following positions (WGS84 datum):

21° 33'.44 S 114° 26'.46 E
21° 33'.99 S 114° 27'.78 E
21° 34'.55 S 114° 29'.15 E
21° 35'.01 S 114° 30'.35 E
21° 35'.21 S 114° 30'.72 E
21° 35'.57 S 114° 31'.59 E
21° 35'.97 S 114° 32'.57 E
21° 36'.39 S 114° 33'.66 E
21° 38'.77 S 114° 37'.38 E
21° 39'.70 S 114° 39'.05 E
21° 39'.84 S 114° 40'.05 E
21° 40'.20 S 114° 42'.67 E
21° 40'.57 S 114° 45'.09 E
21° 42'.82 S 114° 48'.26 E
21° 43'.40 S 114° 49'.16 E
21° 43'.95 S 114° 49'.81 E

Chart temporarily affected - Aus 328 - Aus 743 - Aus 744 - AU422114

1095(T)/2010 AUSTRALIA - WESTERN AUSTRALIA - North West Cape - Scientific instruments northwestwards

Former Notice - 1335(T)/2009 is cancelled
MetOcean Engineers (AA438335)

Scientific instruments exist as follows:

<i>Position (WGS84 datum)</i>	<i>Remarks</i>
21° 30'.80 S 114° 00'.85 E	special buoy with 5 white poly-floats
21° 30'.93 S 114° 00'.91 E	lit buoy, <i>Fl(5)Y.20s</i>

Chart temporarily affected - Aus 328 - Aus 329 - Aus 744

1096(T)/2010 AUSTRALIA - WESTERN AUSTRALIA - Garden Island - Scientific instrument

Date - Until 31 October 2011
Department of Transport WA Notice 104/2010 (AA497021)

Special light buoy, *Fl(5)Y.20s*, exists in position 32° 14'.95 S 115° 39'.00 E

Mariners are not to use this buoy as a mooring.

Chart temporarily affected - Aus 117 - Aus 754 - Aus 755 - AX 0754E - AX 0755E - AX 66002 - AX 70117

1097(T)/2010 AUSTRALIA - SOUTH AUSTRALIA - Lipson Island - Scientific instrument withdrawn

Former Notice - 877(T)/2010 is cancelled
Department for Transport, Energy and Infrastructure SA Notice 35/2010 (AA484741)

Cancel this notice on receipt.

Chart formerly affected - Aus 777 - AU435136

1098(T)/2010 AUSTRALIA - SOUTH AUSTRALIA - Sultana Point - Beacon destroyed

Department for Transport, Energy and Infrastructure SA Notice 40/2010 (AA497093)

The starboard lateral beacon (35° 08'.41 S 137° 45'.57 E (WGS84 datum)) has been destroyed; a special buoy has been established in situ.

Chart temporarily affected - Aus 139 - Aus 780 - Aus 781

1099(T)/2010 AUSTRALIA - VICTORIA - Port Phillip - Altona - Dredging operations

Date - Until 22 October 2010
Victorian Notice 95(T)/2010 (AA496796)

Dredging operations are in progress at the entrance to Altona Boat Harbour (37° 52'.00 S 144° 50'.96 E).

The dredge material will be deposited on a sand bank 500m northeast of the harbour. The site will be marked by white buoys.

All hazards to navigation will display appropriate lights and shapes.

Mariners are advised to navigate with caution in the area.

Chart temporarily affected - Aus 155 - AU438144 - AU5155P1

1100(T)/2010 AUSTRALIA - VICTORIA - Port Phillip - Port Melbourne - Princes Pier - Harbour works*Former Notice* - 223(T)/2008 is cancelled*Date* - Until 30 June 2011

Victorian Notice 94(T)/2010 (AA496795)

Harbour works associated with the redevelopment of Princes Pier (37°50'.70S 144°55'.54 E) are in progress.

Mariners are advised to navigate with caution in the area.

Chart temporarily affected - Aus 154 - Aus 155**1101(T)/2010 AUSTRALIA - VICTORIA - Port Phillip - Patterson River - Replacement of tidal gates completed***Former Notice* - 731(T)/2010 is cancelled

Victorian Notice 57(T)/2010 (AA478762)

Cancel this notice on receipt.

Chart formerly affected - Aus 143 - AU5143P1**1102(T)/2010 AUSTRALIA - VICTORIA - Port Albert - Harbour works completed***Former Notice* - 1303(T)/2009 is cancelled

Victorian Notice 151/2009 (AA436348)

Cancel this notice on receipt.

Chart formerly affected - Aus 181 - Aus 182 - AU439146**1103(T)/2010 AUSTRALIA - TEMPORARY AND PRELIMINARY NOTICES***Former Notice* - 733(T)/2010 is cancelled

Australian Hydrographic Service (AA497407)

<i>Notice</i>	<i>Charts affected</i>	<i>Locality and Subject</i>
687/2010	Aus357A-487-AU439148	BASS STRAIT Drilling operations
317/2006	Aus191	NEW SOUTH WALES <i>Batemans Bay</i> Shoaling; buoy
1035/2008	Aus193-807-808-AX0808E-60193-70193- AU5XX193	<i>Beecroft Peninsula</i> Light buoy off station
1113/2009	Aus198-199-AU5198X9	<i>Botany Bay</i> Harbour works
606/2010	Aus198-199-AU5198X9	Cable laying operations
49/2010	Aus197-808-809-AX0808E-0809E-63200- AU434151	<i>Cape Baily to Ben Buckler</i> Scientific instruments
708/2008	Aus195-197-806-807-808-809-810-811-812- 813-AX0808E-0809E	<i>Green Cape to Ballina Head</i> Scientific instruments
847/2010	Aus219-AU5219P3	<i>Hastings River</i> Light discontinued
1009/2009	Aus197-200-201-AX63200-AU5X200E	<i>Manly</i> Scientific instruments
708/2010	Aus207-208-AU5XX208	<i>Newcastle</i> Depth information
919/2010	Aus207-208-809-AX0809E	Obstructions
454/2006	Aus202-AU5X200W	<i>Port Jackson</i> Shoaling
167/2010	Aus200-202-AU5X200E	Darling Point-Scientific instrument

1103(T)/2010 AUSTRALIA - TEMPORARY AND PRELIMINARY NOTICES (continued)

<i>Notice</i>	<i>Charts affected</i>	<i>Locality and Subject</i>
707/2010	Aus194-195	<i>Port Kembla</i> Obstruction; light buoy established
917/2010	Aus194	Depth information
918/2010	Aus195-808-AX0808E	Obstructions <i>Port Stephens</i>
658/2009	Aus209-AU433152	Shoaling
NORTHERN TERRITORY		
		<i>Darwin</i>
568/2010	Aus24-26-28-AX72026-AU5XXX24	Fort Point-Harbour works
767/2010	Aus24-27-28-AU5XXX24	Depth information <i>Melville Island</i>
790/2009	Aus20	Reef delineation <i>Troubadour Shoals</i>
950/2004	Aus309-311-315	Scientific instruments
QUEENSLAND		
		<i>Abbot Point</i>
460/2008	Aus255	Light buoy established
664/2008	Aus255-826	Scientific instruments
1044/2008	Aus255-AU5XX255	Harbour works
1152/2008	Aus255-AU5XX255	Depth information <i>Acacia Island</i>
381/2010	Aus251-AU421148	Light beacon destroyed <i>Airlie Beach</i>
819/2008	Aus252-253-268-AU5268P2	Light buoys established
667/2009	Aus252-253-268-AU5268P2	Wreck
385/2010	Aus252-253-268-AU5268P2	Muddy Bay-Wreck <i>Albatross Bay</i>
729/2009	Aus4-701-AU413141	Scientific instruments <i>Arkwright Point</i>
505/2010	Aus365-AU427153	Scientific instrument
1015/2010	Aus365	Scientific instruments northeastwards <i>Barb Reef</i>
716/2010	Aus254-825-AU320149	Beacon destroyed <i>Bird Island to Groper Point</i>
325/2010	Aus252-254-825-AU421148-5254P2	Nav aids <i>Black Island</i>
845/2009	Aus252-254-AU5254P2	Light beacon destroyed <i>Brisbane River</i>
1090/2006	Aus238	Lights altered
751/2008	Aus237	Fisherman Islands-Harbour works
1238/2009	Aus238-AU5237X8	Lytton Reach-Harbour works
1377/2009	Aus238-AU5237X8	Kangaroo Point-Harbour works
560/2010	Aus236-237-AU428153-5237X8	Whyte Island-Harbour works
609/2010	Aus238-AU5237X8	Quarries Reach to Parker Island Reach-Harbour works
965/2010	Aus238-AU5237X8	Shoaling <i>Bundaberg</i>
657/2008	Aus242	Sea Reach-Light beacon destroyed
561/2010	Aus242-AU5XX242	Inner Reach-Light beacon damaged
610/2010	Aus242-AU5XX242	Long Reach-Cable ferry operations
922/2010	Aus242	Burnett River-Shoaling
968/2010	Aus242-243	Depth information <i>Cairns</i>
327/2010	Aus262-263-264-830-AX63262-AU417145-5262X4	Depth information <i>Caloundra</i>
620/2009	Aus235	Rock outcrop
967/2010	Aus235-AU427153	Harbour works <i>Cape Bowling Green</i>
114/2008	Aus826-827	Scientific instrument

1103(T)/2010 AUSTRALIA - TEMPORARY AND PRELIMINARY NOTICES (continued)

<i>Notice</i>	<i>Charts affected</i>	<i>Locality and Subject</i>
134/2010	Aus256-827-AU320147	<i>Cape Cleveland</i> Scientific instrument
717/2010	Aus256-827-AU320147	<i>Cape Ferguson</i> Scientific instruments
94/2009	Aus826-827-AU320147	<i>Cape Upstart</i> Wreck northwards
755/2008	Aus371-372-827-828	<i>Cassady</i> Light beacon destroyed
804/2010	Aus246-819-AU424151	<i>Colosseum Inlet</i> Obstruction
1136/2009	Aus270-AU5270P6	<i>Cooktown</i> Light buoy repositioned; light buoy established
929/2010	Aus270	Depth information <i>Coral Point</i>
175/2010	Aus249-823-AX0249E-0823E-AU422149	Light beacon destroyed
971/2010	Aus830	<i>Double Island</i> Scientific instrument
222/2010	Aus249-250-823-AX0249E-0823E-AU422149-5250P1	<i>Freshwater Point to Slade Island</i> Scientific instruments
1283/2009	Aus244-245-819-AU424151-5244X5	<i>Gladstone</i> Scientific instruments
1445/2009	Aus246-AU424151	Boyne Cutting-Light beacon destroyed; light buoy established
171/2010	Aus246-AU424151	Boyne River-Light beacons destroyed
220/2010	Aus244-245-246-AU424151-5244X5	Depth information
673/2010	Aus246-819-AU424151	Scientific instrument
759/2010	Aus244-245-AU5244X5	Curtis Island-Drilling operations
760/2010	Aus244-245-AU5244X5	Fishermans Landing to Curtis Island-Pipeline
1017/2010	Aus245-819-AU424151-5244X5	Targinie Channel to Kangaroo Island-Scientific instruments
1018/2010	Aus245-819-AU424151-5244X5	North Passage Island-Scientific instruments
1074/2010	Aus244-245	Dredging operations <i>Gladys Inlet</i>
1081/2010	Aus258	Shoaling; light buoys repositioned
836/2009	Aus230	<i>Gold Coast Seaway</i> Shoaling
837/2009	Aus230	Shoaling
1099/2008	Aus828-AU419146	<i>Goold Island</i> Wreck
174/2010	Aus366-367-819-820-AX0367E-0820E-AU424150	<i>Great Keppel Island</i> Light beacon destroyed
964/2009	Aus249-250-AU5250P2	<i>Hay Point</i> Depth information
1243/2009	Aus249-250-823-AX0249E-0823E-AU422149-5250P2	Scientific instruments
714/2010	Aus249-250-AU5250P2	Depth information
1078/2010	Aus249-250-AX0249E-AU422149-5250P2	Dredging operations; mooring buoys
855/2010	Aus249-250-823-824-AX0249E-0823E	<i>Hay Point to Bailey Islet</i> Scientific instruments
436/2010	Aus236-364-814-AU428153	<i>Henderson Rock</i> Wreck
111/2008	Aus819	<i>Heron Island</i> Scientific instruments
318/2010	Aus251-823-824-AX0823E-AU421149	<i>Hesket Rock</i> Light beacon destroyed
512/2010	Aus252-AU421148	<i>Hook Island</i> Light beacon destroyed
930/2007	Aus254-825	<i>Hook Reef</i> Beacon destroyed
382/2010	Aus251-252-824-AU421149	<i>Io Reef</i> Light beacon destroyed

1103(T)/2010 AUSTRALIA - TEMPORARY AND PRELIMINARY NOTICES (continued)

<i>Notice</i>	<i>Charts affected</i>	<i>Locality and Subject</i>
1051/2008	Aus6	<i>Karumba</i> Light beacon withdrawn
766/2010	Aus6	Depth information <i>Laguna Quays</i>
1052/2006	Aus252	Reduced depth
444/2010	Aus252-AU5252P1	Lights unlit; light beacons damaged <i>Lisa Jane Shoals</i>
613/2010	Aus247-819-820-AU424151	Scientific instrument <i>Lizard Island</i>
118/2008	Aus832	Scientific instruments <i>Mackay</i>
762/2010	Aus250-AU5250P1	Depth information <i>Macona Inlet</i>
447/2010	Aus252-AU421148	Light beacon destroyed <i>Mooloolaba</i>
1073/2010	Aus235	Shoaling <i>Moreton Bay</i>
774/2007	Aus236	Shoaling
710/2008	Aus235-236	Spitfire Channel-Light buoys established
84/2009	Aus236	Rous Channel-Shoaling
662/2009	Aus236	Cleveland Point-Light beacon unlit
128/2010	Aus236-AU428153	Redcliffe-Scientific instrument southeastwards
315/2010	Aus236-AU428153	Green Island-Light beacon destroyed
374/2010	Aus236-AU428153	Pelican Banks-Wreck
503/2010	Aus236-AU428153	Redcliffe-Scientific instrument southeastwards
504/2010	Aus235-236-AU428153	Pumicestone Channel-Bellara-Wreck
712/2010	Aus236-AU428153	Deception Bay-Obstruction
803/2010	Aus236-AU428153	Cabbage Tree Head-Shoaling
851/2010	Aus235	North Banks-Scientific instrument
966/2010	Aus236	Bramble Bay-Bridge construction
1009/2010	Aus235-236-237-238-AU427153-428153-5237X8	Brisbane River-Depth information and under keel clearances
1012/2010	Aus236-237-AU428153-5237X8	Fisherman Islands-Lights established
1068/2010	Aus236-428153	Ship to ship transfer
1069/2010	Aus236-AU428153	Harbour works
1071/2010	Aus236-AU5237X8	Manly-Harbour works <i>Mourilyan</i>
387/2010	Aus258-829-AU418146-5258P1	Hall Rock-Light beacon unlit
806/2010	Aus258-AU5258P1	Depth information
807/2010	Aus258-AU5258P1	Light buoys repositioned <i>Mourilyan Harbour</i>
135/2010	Aus258-AU5258P1	Harbour works <i>Pioneer Bay</i>
1244/2006	Aus268	Harbour works; light buoys.
663/2008	Aus252-253-268	Dredging operations <i>Point Danger to Point Lookout</i>
848/2010	Aus230-813-814	Scientific instruments <i>Port Alma</i>
1019/2009	Aus265-AU5247P1	Depth information <i>Port Douglas</i>
621/2010	Aus270-AU5270P1	Depth information <i>Proserpine River</i>
445/2010	Aus252-824-AU421148	Light beacon destroyed; light beacon damaged <i>Rocky Point</i>
170/2009	Aus829-AU418146	Light beacon withdrawn <i>Rosslyn Bay</i>
853/2010	Aus247-AU5247P2	Harbour works <i>Schooner Rock</i>
319/2010	Aus251-824-AU421149	Light beacon destroyed <i>Seaforth</i>
380/2010	Aus251-AU421148	Light beacon destroyed

1103(T)/2010 AUSTRALIA - TEMPORARY AND PRELIMINARY NOTICES (continued)

<i>Notice</i>	<i>Charts affected</i>	<i>Locality and Subject</i>
1077/2010	Aus248-260-261-367-820-822-AX0260E-0367E-0820E-0822E-60260-67248-67261-AU423150-5261P1-5261P2-5XX248	<i>Shoalwater Bay</i> Live firing
1451/2009	Aus252-253-AU421148	<i>Shute Bay</i> Obstructions
763/2010	Aus252-253-AU421148-5253P1	<i>Shute Harbour</i> Wreck
671/2006	Aus701	<i>Skardon River</i> Shoaling
890/2007	Aus701	Shoaling
777/2009	Aus230	<i>Southport</i> Harbour works
963/2010	Aus230	Dredging operations
329/2009	Aus252-253-824-AU421149	<i>Surprise Rock</i> Light beacon destroyed
311/2008	Aus367-426	<i>Swains Reef</i> Scientific instruments
116/2008	Aus828	<i>Thread Shoal to Myrmidon Reef</i> Scientific instruments
931/2010	Aus293-299	<i>Thursday Island</i> Depth information
1248/2008	Aus256-257-AU5XX257	<i>Townsville</i> Light buoy
1133/2009	Aus257-AU5XX257	Ross Creek-Light beacons withdrawn; light buoys established
62/2010	Aus257-AU5XX257	Ross River-Harbour works
718/2010	Aus256-257-AU5XX257	Light buoy established
1079/2010	Aus256-257	Depth information
1080/2010	Aus256-257	Scientific instruments
66/2010	Aus4	<i>Weipa</i> Obstruction
391/2010	Aus4-AU5XX4P1	Depth information
809/2010	Aus4-701-AU413141	Scientific instruments
932/2010	Aus4-701-AU413141	Harbour works
384/2010	Aus252-253-824-825-AU421149	<i>Whitehaven Bay</i> Lagoon Rock-Light beacon destroyed
511/2010	Aus252-254-824-AU421119-5254P1	<i>Whitsunday Group</i> Shaw Island-Platypus Rock-Light beacon destroyed
323/2010	Aus252-253-AU421149	<i>Whitsunday Island</i> Whitehaven Beach-Light beacon destroyed
446/2010	Aus252-253-254-AU421148	Reef Point-Light beacon destroyed
383/2010	Aus252-254-824-AU421149-5254P1	<i>Whitsundays</i> Spitfire Rock-Light beacon destroyed
SOUTH AUSTRALIA		
830/2008	Aus130-780-781	<i>Barker Inlet</i> Shoaling
236/2010	Aus130-AU435138	Shoaling
1161/2008	Aus125	<i>Glenelg</i> Shoaling
458/2009	Aus125-781	Restricted area; light buoys
880/2010	Aus125-126-345-346-444-780-AU436137	<i>Kangaroo Island</i> Light destroyed; lights established
573/2010	Aus139-780	<i>MacDonnell Sound</i> Wreck
455/2009	Aus136-444-778	<i>Point Lowly</i> Light unreliable
720/2008	Aus137	<i>Port Adelaide</i> Shoaling

1103(T)/2010 AUSTRALIA - TEMPORARY AND PRELIMINARY NOTICES (continued)

<i>Notice</i>	<i>Charts affected</i>	<i>Locality and Subject</i>
415/2008	Aus344-778	<i>Port Augusta</i> Light beacon altered
1032/2010	Aus778-AU433137	Bluff Reach-Light beacon damaged
572/2009	Aus125-780-781	<i>Port Stanvac</i> Pipeline
879/2010	Aus125-780-781	Scientific instrument
921/2009	Aus780	<i>Port Willunga</i> Light buoy off station
876/2010	Aus776-AX0776E-AU435136	<i>Rosalind Shoal</i> Scientific instrument
1098/2010	Aus139-780-781	<i>Sultana Point</i> Beacon destroyed
176/2009	Aus777	<i>Wallaroo</i> Depth information
873/2010	Aus342-343-AX0343E	<i>Whidbey Isles</i> Scientific instrument
774/2010	Aus136-AU5136P3	<i>Whyalla</i> Light destroyed
268/2008	Aus125	<i>Wirrina Cove</i> Shoaling
TASMANIA		
922/2009	Aus163	<i>Burnie</i> Depth information
816/2010	Aus169-766-AU443148-5169P3	<i>Coles Bay</i> Light removed
940/2010	Aus173-795-AU444147	<i>D'Entrecasteaux Channel</i> Scientific instrument
726/2010	Aus167-799-AU442146	<i>Five Mile Bluff</i> Scientific instruments
529/2010	Aus171-796-AU443147	<i>Frederick Henry Bay</i> Light beacon destroyed
922/2005	Aus179-800	<i>Furneaux Group</i> Franklin Sound-Shoaling
91/2010	Aus169	<i>Georges Bay</i> Wreck
509/2008	Aus171-172	<i>Hobart</i> Obstructions
724/2010	Aus174-AU5174P1	<i>North West Bay</i> Harbour works
143/2010	Aus167-AU5167X8	<i>Port Dalrymple</i> Light buoy off station
817/2010	Aus167-799-AU442146-5167X8	Scientific instruments
1085/2009	Aus167-799-AU442146-5167X8	<i>River Tamar</i> Reclamation works
883/2010	Aus167-168-AU5167X8	Long Reach-Light beacon destroyed
685/2010	Aus170-175-AU443147-5XX175	<i>Triabunna</i> Beacon destroyed
TIMOR SEA		
1083/2010	Aus309-315-AX0309F-0315F-72309-AU312127-312128-313127-313128	Seismic survey
569/2010	Aus314-319-4721-4722-AX0314F-0319F-AU313124	Platform; mooring buoys
476/2006	Aus312	<i>Sahul Banks</i> Scientific instruments
223/2009	Aus312-4721-AX0312F-4721F-AU311126	Navaid; racon non operational
TORRES STRAIT		
65/2010	Aus293-299-AU311142-5XX299	<i>Madge Reef</i> Light beacon unlit

1103(T)/2010 AUSTRALIA - TEMPORARY AND PRELIMINARY NOTICES (continued)

<i>Notice</i>	<i>Charts affected</i>	<i>Locality and Subject</i>
389/2010	Aus376-377-840-AX60377-AU410143	Stephens Islet Wreck northwards
VICTORIA		
1300/2009	Aus801-AU439145	Anderson Inlet Shoaling
1301/2009	Aus181-182-AU439146	Barry Beach Shoaling
1468/2009	Aus143-788-AU439144	Barwon River Bridge construction; exclusion zones; light buoys established
1034/2010	Aus143-AU439144	Submarine pipeline Corner Inlet
1213/2008	Aus181-357A-802-AU439146	Shoaling Lakes Entrance
741/2009	Aus182	Harbour works Ninety Mile Beach
458/2007	Aus357a	Obstructions Port Albert
800/2009	Aus181-182-AU439146	Shoaling Port Campbell
574/2010	Aus141	Lights established; bearing altered Port Phillip
796/2007	Aus143-158	Obstruction
893/2008	Aus154-AU5XX154	Port Melbourne-River Yarra-Light beacon withdrawn
230/2009	Aus154-AU5XX154	Depth information
531/2010	Aus154-AU5XX154	River Yarra-Harbour works
576/2010	Aus143-155-AU438144	Altona-Harbour works
886/2010	Aus143-155-AU438144	Brighton-Dredging operations
942/2010	Aus153-157	Geelong-Depth information
943/2010	Aus155	Werribee River-Harbour works
944/2010	Aus155-AU438144	Altona-Harbour works
981/2010	Aus157-AU439144	Point Richards-Nav aids to be established
1035/2010	Aus143-158	South Channel-Obstruction
1036/2010	Aus154-155-AU438144	Port Melbourne to St Kilda-Nav aid upgrade works
1037/2010	Aus143-158-AU5143P3	Mornington-Harbour works
1099/2010	Aus155-AU438144-5155P1	Altona-Dredging operations
1100/2010	Aus154-155	Port Melbourne-Princes Pier-Harbour works Port Welshpool
1302/2009	Aus181-AU439146	Middle Ground Channel-Beacon destroyed Western Port
514/2008	Aus150-151	Phillip Island-Shoaling northwards
1346/2009	Aus150-801-AU439145	Wonthaggi-Scientific instrument
WESTERN AUSTRALIA		
729/2006	Aus109	Albany Light beacon; light buoy
633/2010	Aus109-AU5XX109	Harbour works Barrow Island
75/2010	Aus62-742-AU421115	Harbour works; exclusion zone
76/2010	Aus62-742-743-AU421115	Scientific instruments
139/2010	Aus62-742-743-AU421115	Scientific instruments
867/2010	Aus742	Scientific instrument
1088/2010	Aus62-742	Anchorage northeastwards
1089/2010	Aus328-AU320114-321114	Wells northwestwards Bessieres Island
1093/2010	Aus328-744-4708-4723-4725-AX4708F	FPSO off station northwestwards Binningup
85/2010	Aus115-334-335-755-AX0334E-0755E-AU434115	Offshore works; exclusion zone

1103(T)/2010 AUSTRALIA - TEMPORARY AND PRELIMINARY NOTICES (continued)

<i>Notice</i>	<i>Charts affected</i>	<i>Locality and Subject</i>
		<i>Broome</i>
1079/2009	Aus50-51-324-AU418122	Electronic navigation aid trial
977/2010	Aus51	Scientific instruments
		<i>Browse Island</i>
626/2010	Aus319-320-AX0319F-AU314123	Scientific instruments northwestwards
		<i>Cape Preston</i>
458/2010	Aus327-742-743-AU421116	Harbour works
		<i>Dampier</i>
1034/2007	Aus57-58-59	Depth information
218/2008	Aus57-58-59	Anchorage
911/2009	Aus57-58-741	Obstruction
137/2010	Aus57-58-59	Pipeline established
628/2010	Aus57-58-59-AU5XXX58	Nav aids to be established
936/2010	Aus59-AU5XXX58	Shoaling
937/2010	Aus58-59-AU5XXX58	Lights unlit
		<i>Dampier Archipelago</i>
629/2010	Aus327	Scientific instruments northwestwards
630/2010	Aus327	Scientific instruments northwestwards
		<i>Delambre Island to Dixon Island</i>
1087/2010	Aus55-57	Drilling operations
		<i>Emu Point</i>
764/2008	Aus110-118-759	Light
		<i>Esperance</i>
337/2010	Aus119-AU5119P1	Depth information
338/2010	Aus119-AU434121-5119P1	Light beacons destroyed
		<i>Exmouth Plateau</i>
1296/2009	Aus329-415-416-4708-AX0415F-4708F-AU130090	Obstruction
		<i>Exmouth Plateau to Onslow</i>
1090/2010	Aus64-327-328-329-742-743-744-4723-4725	Seismic survey
		<i>Fremantle</i>
470/2008	Aus112-113-AX63112	Obstruction; submarine pipeline; light buoys
273/2009	Aus112-754-AX0754E-63112-66002	Anchorage
793/2009	Aus113-AU5XX113	Depth information
773/2010	Aus117-AX70117-AU433115	Light beacon damaged
871/2010	Aus113-AU5XX113	Rous Head-Pipeline
939/2010	Aus112-113-117-AX63112-70117-AU5XX113	Dredging operations
		<i>Garden Island</i>
815/2010	Aus117-754-AX0754E-66002-70117-AU433115	Exclusion zone
1096/2010	Aus117-754-755-AX0754E-0755E-66002-70117	Scientific instrument
		<i>Geographe Bay</i>
518/2009	Aus334-335-755-756-AX0334E-0755E-AU434115	Scientific instrument
		<i>Geraldton</i>
946/2008	Aus81	Depth information
451/2009	Aus81-751	Light buoy off station
		<i>Heywood Shoal</i>
1084/2010	Aus319-322-AX0319F-0322F-AU314122-314123	Seismic survey westwards
		<i>Irvine Island</i>
768/2010	Aus40-732-733-AU417123	Scientific instruments
		<i>James Price Point</i>
1029/2010	Aus324-AU418122	Mooring buoys
1086/2010	Aus324-AU418122	Drilling operations

1103(T)/2010 AUSTRALIA - TEMPORARY AND PRELIMINARY NOTICES (continued)

<i>Notice</i>	<i>Charts affected</i>	<i>Locality and Subject</i>
		<i>Montebello Islands</i>
571/2010	Aus327	Mooring unlit, mooring withdrawn northeastwards
631/2010	Aus328-742-AU421115	Scientific instruments northwestwards
814/2010	Aus328-742-AU421115	Scientific instruments
		<i>Muiron Islands</i>
1392/2009	Aus328-329-744-AU422114	Light buoy established northwestwards
		<i>Mullaloo to Warnbro Sound</i>
524/2010	Aus112-116-117-334-754-755-AX0334E-0754E-0755E-63112-66002-70117-AU432115-433115	Scientific instruments
		<i>Ningaloo Reef</i>
1031/2010	Aus329-745-AU323113	Scientific instruments
		<i>North Muiron Island to Locker Island</i>
869/2010	Aus743-744	Scientific instruments
		<i>North West Cape</i>
1095/2010	Aus328-329-744	Scientific instruments northwestwards
		<i>North West Reefs to Regnard Bay</i>
1030/2010	Aus327-741-742-AU421116	Platform; pipeline
		<i>Peak Island to Rocky Point</i>
1094/2010	Aus328-743-744-AU422114	Drilling operations
		<i>Perth</i>
792/2009	Aus334-754-AX0334E-0754E-0755E-66002-AU332114-432115-433115	Scientific instruments westwards
		<i>Port Hedland</i>
827/2008	Aus54	Lights established
331/2009	Aus52-53-54	Harbour works
332/2009	Aus52-53-54	Dredging operations
677/2009	Aus54-AU5XXX54	Light established
722/2010	Aus52-54-AU5XXX52	Depth information
723/2010	Aus52-53-54-AU5XXX52	Dredging operations
813/2010	Aus52-53-54-739-740-AU5XXX52	Scientific instruments
		<i>Rankin Bank</i>
334/2010	Aus327-328-AU320115	Scientific instruments
394/2010	Aus328-AU320115	Scientific instruments
		<i>Regnard Bay</i>
457/2010	Aus741-742-AU421116	Scientific instruments
		<i>Scott Reef to James Price Point</i>
1085/2010	Aus322-323-324-AX0322F	Scientific instruments
		<i>Thevenard Island to Ashburton Road</i>
938/2010	Aus64-743-744	Scientific instruments
		<i>Thevenard Island to Exmouth Plateau</i>
1091/2010	Aus63-64-328-742-743-4723-4725	Scientific instruments
		<i>Woodbine Bank to Johnson Bank</i>
975/2010	Aus314-317-319-AX0314F-0317F-0319F-AU313123	Seismic survey
		<i>Yampi Sound</i>
1052/2008	Aus40-732-733	Comber Rock-Buoy off station
		EAST TIMOR
		<i>Dili</i>
727/2006	Aus901	Light unlit
		<i>Pulau Jaco</i>
309/2005	Aus311-312-313-4721	Light unlit
		INDIAN OCEAN
1135/2006	Aus4071	Scientific instruments
800/2005	Aus607	Light beacon
		<i>Sumatera</i>
1458/2009	Aus4070-4071	Scientific instruments westwards

1103(T)/2010 AUSTRALIA - TEMPORARY AND PRELIMINARY NOTICES *(continued)*

<i>Notice</i>	<i>Charts affected</i>	<i>Locality and Subject</i>
1471/2009	Aus399-4622-AU306156	PACIFIC OCEAN Scientific instruments
609/2008	Aus399-683-4622	PAPUA NEW GUINEA <i>Bougainville Island</i> Lights unlit
972/2010	Aus379-AU410146	<i>Caution Bay</i> Drilling operations
406/2008	Aus547-4622	<i>Kimbe Island</i> Light unlit
967/2005	Aus646	<i>Madang</i> Horizontal datum anomaly
404/2008	Aus379-505-4620	<i>Port Moresby</i> Fish aggregation device southwards
1102/2008	Aus399-AU407155	<i>Rantan Island</i> Light unlit
400/2010	Aus4709	SOUTHERN OCEAN Scientific instrument withdrawn
1038/2010		MISCELLANEOUS Summer time

HYDROGRAPHIC REPORTS

<i>Locality</i>	<i>Report</i>	<i>Ship/Authority</i>	<i>Observer</i>
QLD- LADS Passage	Shoaling		I Fanning
WA- West Holothuria Reef	Shoal	HMAS <i>Leeuwin</i>	

NAVIGATION WARNINGS

The following radio messages have been received during the period to 8 October 2010. Signal copies of these messages may be destroyed. It is recommended that the reprint of Navigational Warnings should be kept in a file or a book divided into areas. Cancellation should be made on receipt of signals and reprints.

Rigs on location other than those listed in the latest Section III summary are the subject of Radio Navigational Warnings. Rigs in transit will not be the subject of Warnings.

AUSCOAST WARNING

- 233 Cancelled.
 234 Cancelled.
 235 Special purpose vessel *Ramform Explorer* conducting seismic survey in area bounded by 13° 14'·0 S to 13° 31'·0 S and 122° 44'·0 E to 123° 49'·0 E. 6M clearance requested.
 236 Cancelled.
 237 Cancelled.
 238 Mariners are requested to avoid rock lobster research activity from 1 October to 16 October in the following locations:
 30° 54'·0 S to 31° 05'·0 S and 114° 54'·0 E to 115° 08'·0 E (Lancelin Area),
 29° 55'·0 S to 30° 23'·0 S and 114° 31'·0 E to 114° 50'·0 E (Jurien Area),
 29° 09'·0 S to 29° 48'·0 S and 114° 21'·0 E to 114° 43'·0 E (Dongara Area),
 and West of the Abrolhos Islands to a depth of 50m.
 239 Drill rig *Stena Clyde* in position 20° 36'·5 S 114° 54'·4 E. 2.5M clearance requested.
 240 Drill rig *Ensco 109* in position 20° 18'·19 S 116° 25'·17 E. 2.5M clearance requested.
 241 Drill rig *Ocean America* in position 19° 23'·59 S 114° 18'·43 E. 2.5M clearance requested.
 242 Hammond Hill light K3267.5 (10° 31'·74 S 142° 13'·39 E) unlit.

NAVAREA X WARNINGS

- 008 As previously notified by NAVAREA warning, mariners using ECDIS are advised not to rely solely on automated voyage planning and monitoring checks and alarms. It is recommended that mariners undertake careful visual inspection of the entire planned route to confirm that it, and any deviations from it, is clear of dangers. The ECDIS display should be configured to display all soundings during this inspection.

Particular care should be taken when planned routes cross areas where only small scale ENC's (Usage Bands 1 and 2) are available. In some display configurations, such as when no names are shown, small islands and other point features may be difficult to identify or could be obscured by surrounding depth contours. Some ECDIS systems appear only to undertake route check functions on larger scale ENC's and therefore alarms might not activate. This may not be clearly indicated on the ECDIS display.

The International Hydrographic Organization (IHO) is leading technical action to investigate these matters in consultation with ECDIS equipment manufacturers. Further information will be made available through Notices to Mariners.

Navigational warnings in force as at 080001UTC OCT 10.**Auscoast**

111 197 211 215 220 225 231 235 238 239 240 241 242

Navarea X

008

Summary of mobile drilling rigs as at 080001UTC OCT 10.

<i>Name</i>	<i>Position</i>
Songa Venus	13° 40'·46 S 123° 20'·63 E
Ensco 109	20° 18'·19 S 116° 25'·17 E
Maersk Discoverer	19° 54'·80 S 115° 07'·90 E
Stena Clyde	20° 36'·50 S 114° 54'·40 E
Ocean America	19° 23'·59 S 114° 18'·43 E
Ocean Epoch	21° 34'·33 S 114° 09'·31 E
Jack Bates	20° 15'·57 S 113° 41'·21 E
Ocean Patriot	38° 10'·86 S 148° 35'·58 E

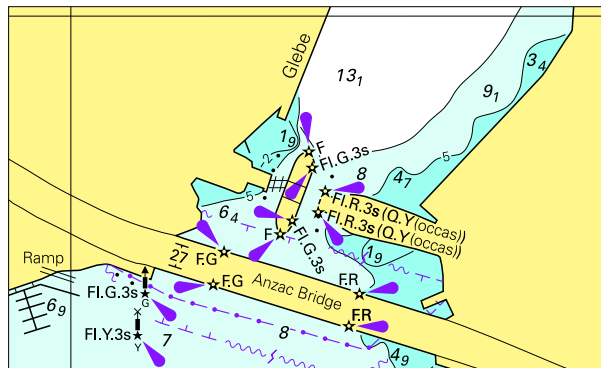
NAVAREA XIV WARNINGS

- 030 Cancelled.
- 031 Cancelled.
- 032 Cancelled.
- 033 Cancelled.
- 034 Cancelled.
- 035 South Pacific Ocean. Samoa, northwestwards. Underwater operations by vessel RV L'Atalante in progress, in area bounded by: 8° 00'·0 S 172° 00'·0 W, 14° 00'·0 S 172° 00'·0 W, 14° 00'·0 S 179° 00'·0 W, 8° 00'·0 S 179° 00'·0 W. Wide berth requested.

Navarea XIV warnings in force as at 080001UTC OCT 10.

019 028 035

To accompany Australian Notice to Mariners 1040/2010

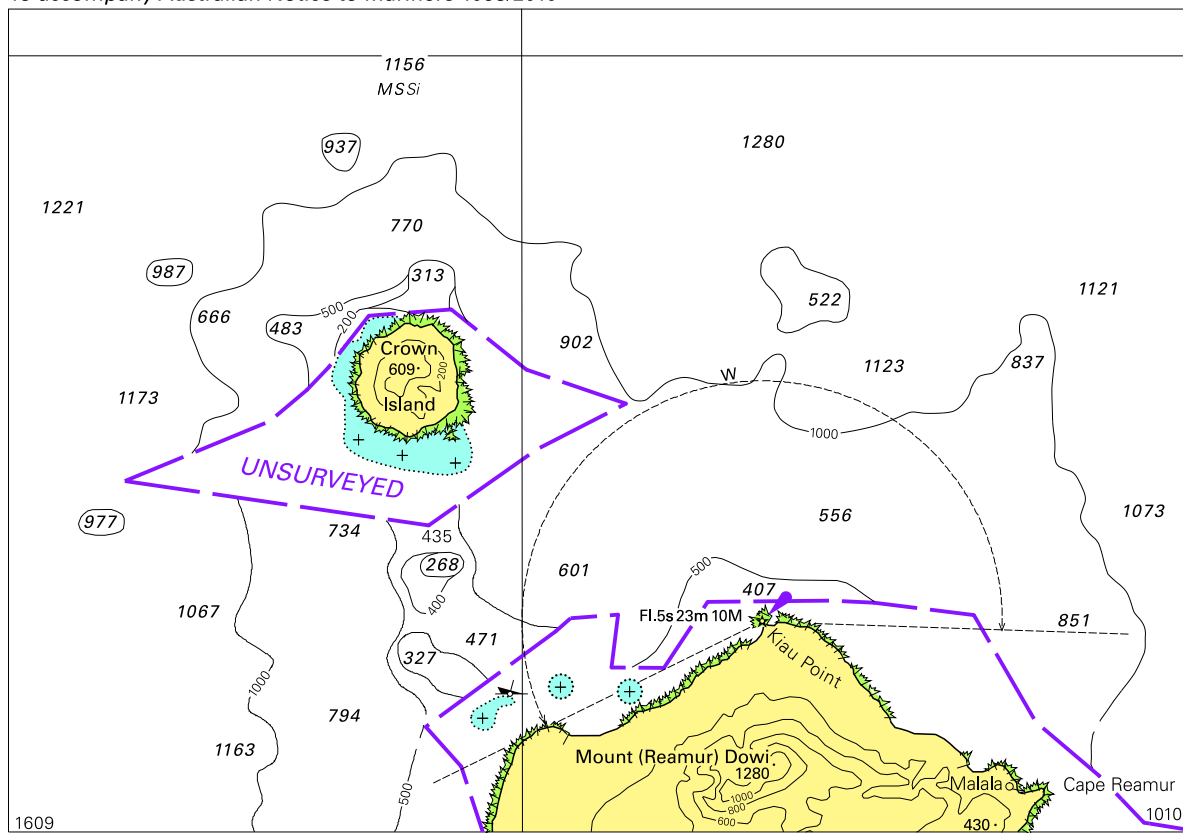


© Commonwealth of Australia 2010

Block for chart Aus 202

(79.6x48.0mm)

To accompany Australian Notice to Mariners 1053/2010

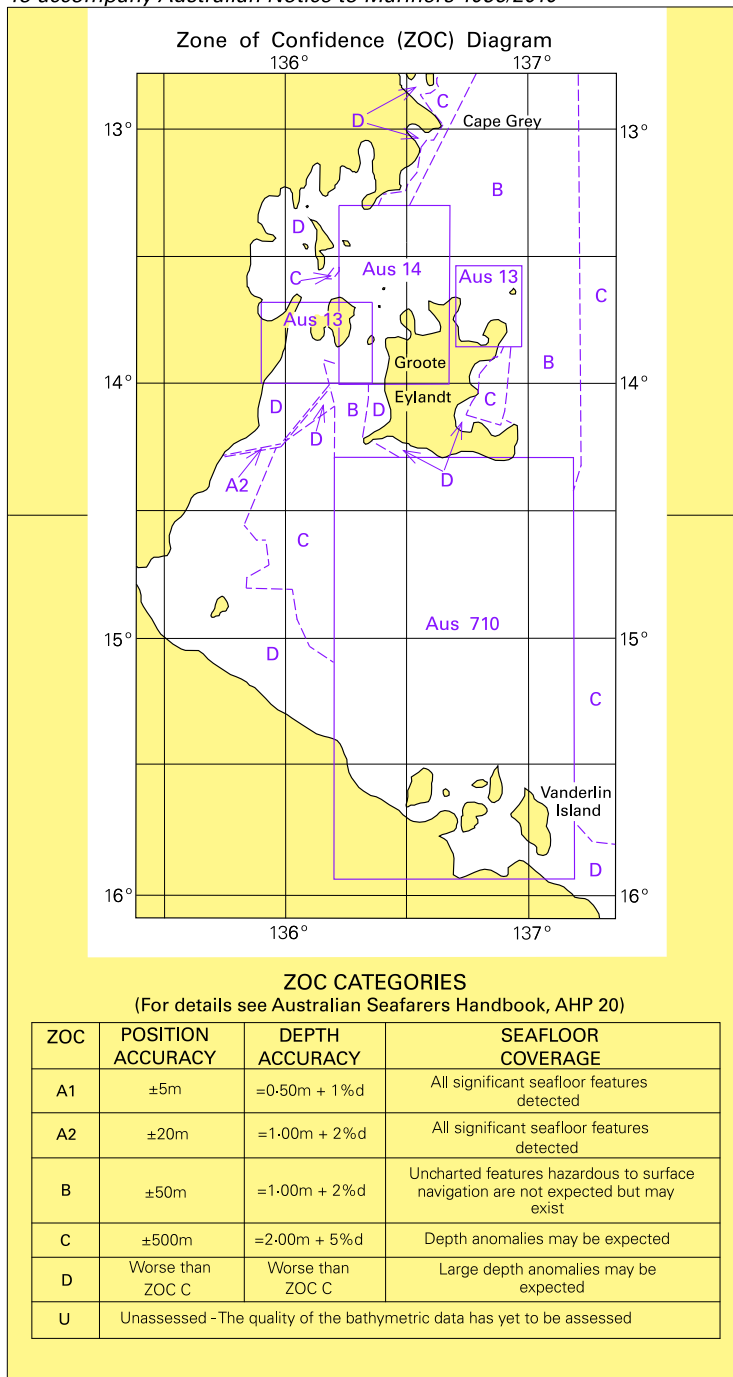


Block for chart Aus 387

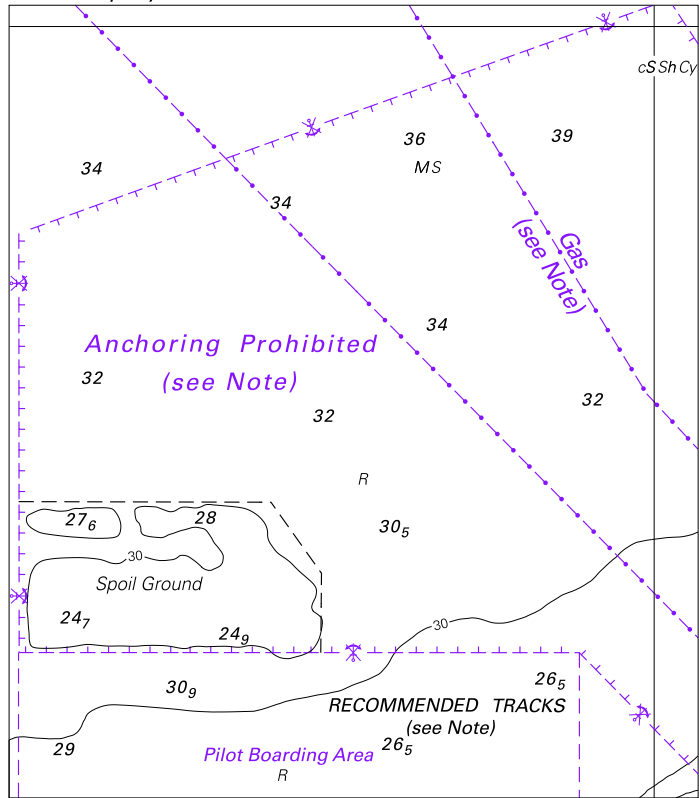
© Commonwealth of Australia 2010

(156 x 108-8mm)

To accompany Australian Notice to Mariners 1056/2010



To accompany Australian Notice to Mariners 1058/2010

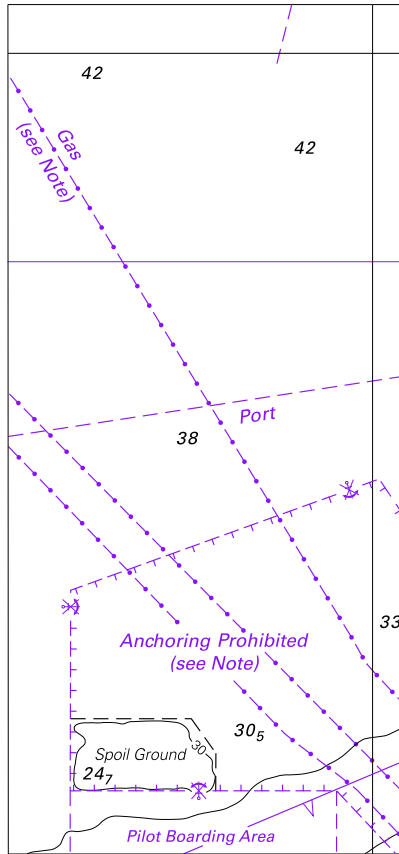


© Commonwealth of Australia 2010

Block for chart Aus 57

(91.1 x 104.8mm)

To accompany Australian Notice to Mariners 2058/2010



© Commonwealth of Australia 2010
Block for chart Aus 741 (52.4 x 112.3mm)