



15 January 2010

Edition 1

Australian Notices to Mariners are the authority for correcting Australian Charts and Publications

AUSTRALIAN NOTICES TO MARINERS

Notices 28 – 95

List of Temporary and Preliminary Notices in force

Published fortnightly by the Australian Hydrographic Service

Commodore R. NAIRN RAN
Hydrographer of Australia

SECTIONS.

- I. **Australian Notices to Mariners, including blocks and notes.**
- II. **Hydrographic Reports.**
- III. **Navigational Warnings.**

SUPPLEMENTS.

- I. **Tracings**
- II. **Cumulative List of Australian Notices to Mariners.**
- III. **Temporary and Preliminary Notices in force.**
- IV. **Amendments to Admiralty List of Lights and Fog Signals (Vol K), Radio Signals (NP 281(2), 282, 283(2), 285, 286(4)) and Sailing Directions (NP 9, 13, 14, 15, 33, 34, 35, 36, 39, 44, 51, 60, 61, 62, 100, 136).**

© Commonwealth of Australia 2010

This work is copyright. Apart from any use permitted under the Copyright Act 1968, no part may be reproduced by any process, adapted, communicated or commercially exploited without prior written permission from The Commonwealth represented by the Australian Hydrographic Service.

IMPORTANT NOTICE

This edition of Notices to Mariners includes all significant information affecting AHS products which the AHS has become aware of since the last edition. All reasonable efforts have been made to ensure the accuracy and completeness of the information, including third party information, on which these updates are based. The AHS regards third parties from which it receives information as reliable, however the AHS cannot verify all such information and errors may therefore exist. The AHS does not accept liability for errors in third party information.

GENERAL INSTRUCTIONS

The substance of these notices should be inserted on the charts affected.

Bearings are referred to the true compass and are reckoned clockwise from North; those relating to lights are given as seen by an observer from seaward. Positions quoted in permanent notices relate to the horizontal datum for the chart(s). When preliminary or temporary notices affect multiple charts, positions will be provided in relation to only one horizontal datum and that datum will be specified. When the multiple charts do not have a common horizontal datum, mariners will be required to adjust the position(s) for those charts not on the specified datum. The range quoted for a light is its nominal range. Depths are with reference to the chart datum of each chart. Heights are above mean high water springs or mean higher high water, as appropriate.

The capital letter (P) or (T) after the number of any notice denotes a preliminary or temporary notice respectively, which are contained separately at the end of the permanent notices. A star (*) adjacent to the number of a notice indicates that the notice is based on original information.

REPORTING OF DANGERS

Mariners are particularly requested to notify the AUSTRALIAN HYDROGRAPHIC SERVICE, Locked Bag 8801 Wollongong, NSW 2500 (Fax 02-4223 6599, e-mail Hydro.NTM@defence.gov.au or, alternatively by filling in and submitting the [Hydrographic Notes](#) forms located on the web site – www.hydro.gov.au), immediately on the discovery of new dangers or suspected dangers to navigation. For changes or defects in aids to navigation notify AusSAR (Fax 02-6230 6868 or email rccaus@amsa.gov.au).

AUTHORISED USE

Copies of Australian notices are available free of charge from the Australian Hydrographic Service (AHS) website (www.hydro.gov.au) and through the eNotices (email) service (www.hydro.gov.au/enotices/enotices.htm).

Individual Notices may be copied for the purpose of inserting Notice substance on official charts and publications. Paper copies may be printed by chart agents and distributed to customers on a cost recovery basis. Participating chart agents are listed on the AHS website as providing a 'Paper Notices to Mariners' service (www.hydro.gov.au/prodserv/distributors/distributors.htm). Copies of the notices may not be sold for profit without prior written agreement.

NUMERICAL INDEX OF NOTICES TO MARINERS

Edition No 1

Notices	Aus Chart, INT Chart, ENC Cell
28.....	Aus 49, 50, 320, 326, 626, 670, 739, 740, 741, 5000, 5001
29.....	Aus 200
30.....	Aus 237
31.....	Aus 252, 254
32.....	Aus 388, 462, 4060, 4603, 4622, AX 4603F, INT 60, 603, 622
33.....	Aus 323, 324
34.....	Aus 51
35.....	Aus 55, 56
36.....	Aus 55, 57
37.....	Aus 327
38.....	Aus 105, 753
39.....	Aus 117, AX 70117
40.....	Aus 115
41.....	Aus 116
42.....	Aus 343, 345, 444, 776, AX 0343E, 0776E
43.....	Aus 778
44.....	Aus 422
45.....	Aus 171, 172
46.....	Aus 487
47.....	Aus 801
48(T).....	Aus 193, 807, 808, AX 0808E, 60193, 67192, 70193, AU436150, 5XX193
49(T).....	Aus 197, 808, 809, AX 0808E, 0809E, 63200, AU434151
50(T).....	Aus 219
51(T).....	Aus 609, AU430167
52(T).....	Aus 236
53(T).....	Aus 236
54(T).....	Aus 236, AU428153
55(T).....	Aus 235, 365
56(T).....	Aus 242, 243, AU5XX242
57(T).....	Aus 244, 245, 246
58(T).....	Aus 244, 245, AU5244X5
59(P).....	Aus 249, 823, AX 0249E, 0823E, AU422149
60(T).....	Aus 249, 250, 823, 824, AX 0249E, 0823E, AU422149, AU5250P2
61(T).....	Aus 251, 824, AU421149
62(T).....	Aus 257, AU5XX257
63(T).....	Aus 256, 257, AU5XX257
64(T).....	Aus 270, AU5270P1
65(T).....	Aus 293, 299, AU311142, 5XX299
66(T).....	Aus 4
67(T).....	Aus 6
68(T).....	Aus 6
69(T).....	Aus 308, 309, 310, 311, 312, 313, 314, 315, 316, 317, 318, 321, 322, 442, 721, 725, 4720, 4721, 4722, AX 0309F, 0310F, 4720F, 4721F, 4722F, 72309, INT 720, 721, 722, AU130120, 310127, 310128, 310130, 311125, 311126, 311127, 311128, 311130, 311131, 311132, 312122, 312123, 312124, 312125, 312126, 312127, 312128, 313121, 313123, 313124, 313125, 313126, 313127, 313128, 314124, 314125, 314127, 314128, 411129, 412129, 413129, 414126
70(T).....	Aus 43, 322, AX 0322F, AU315121
71(T).....	Aus 323, 324, AU418122
72(T).....	Aus 57, 58, 741, AU5XXX58
73(T).....	Aus 57, 58, 59, AU5XXX58
74(T).....	Aus 57, 58, 59, AU5XXX58
75(T).....	Aus 62, 742, AU421115
76(T).....	Aus 62, 742, 743, AU421115
77(T).....	Aus 64, 328, 743, 744, AU422114, 422115
78(T).....	Aus 328, 329, 744, AU422114
79(T).....	Aus 63, 64, 328, 415, 416, 742, 743, AX 0415F, AU321114, 422115
80(T).....	Aus 415, 4708, AX 0415F, 4708F, INT 708, AU130090
81(T).....	Aus 329, 330, 416, 4708, AX 4708F, INT 708, AU130090
82(T).....	Aus 334, 754, AX 0334E, 0754E, 66002, AU432115
83(T).....	Aus 112, 113, AX 63112, AU5XX113
84(T).....	Aus 114, 117, AX 70117, AU5111X4
85(T).....	Aus 115, 334, 335, 755, AX 0334E, 0755E, AU434115
86(T).....	Aus 118, 336, 337, 752, 759, 762, 4709, 4726, 4727, AX 0118E, INT 709, 726, 727, AU160090, 160120, 335120, 335121, 336119, 336120, 436118

Notices	Aus Chart, INT Chart, ENC Cell
87(T)	Aus 125, 780, 781
88(T)	Aus 171, 173, AU444147
89(T)	Aus 170, 175, AU443147, 5XX175
90(T)	Aus 766
91(T)	Aus 169
92(T)	Aus 168, AU5167X8
93(T)	Aus 143, 158, AU439144
94(T)	Aus 357A
95(T)	Temporary and Preliminary Notices in force

NUMERICAL INDEX OF CHARTS AFFECTED

Edition No 1

Aus Chart	Notices	Aus Chart	Notices
Aus 4.....	66(T)	Aus 312	69(T)
Aus 6.....	67(T), 68(T)	Aus 313	69(T)
Aus 43.....	70(T)	Aus 314	69(T)
Aus 49.....	28	Aus 315	69(T)
Aus 50.....	28	Aus 316	69(T)
Aus 51.....	34	Aus 317	69(T)
Aus 55.....	35, 36	Aus 318	69(T)
Aus 56.....	35	Aus 320	28
Aus 57.....	36, 72(T), 73(T), 74(T)	Aus 321	69(T)
Aus 58.....	72(T), 73(T), 74(T)	Aus 322	69(T), 70(T)
Aus 59.....	73(T), 74(T)	Aus 323	33, 71(T)
Aus 62.....	75(T), 76(T)	Aus 324	33, 71(T)
Aus 63.....	79(T)	Aus 326	28
Aus 64.....	77(T), 79(T)	Aus 327	37
Aus 105.....	38	Aus 328	77(T), 78(T), 79(T)
Aus 112.....	83(T)	Aus 329	78(T), 81(T)
Aus 113.....	83(T)	Aus 330	81(T)
Aus 114.....	84(T)	Aus 334	82(T), 85(T)
Aus 115.....	40, 85(T)	Aus 335	85(T)
Aus 116.....	41	Aus 336	86(T)
Aus 117.....	39, 84(T)	Aus 337	86(T)
Aus 118.....	86(T)	Aus 343	42
Aus 125.....	87(T)	Aus 345	42
Aus 143.....	93(T)	Aus 357A.....	94(T)
Aus 158.....	93(T)	Aus 365	55(T)
Aus 168.....	92(T)	Aus 388	32
Aus 169.....	91(T)	Aus 415	79(T), 80(T)
Aus 170.....	89(T)	Aus 416	79(T), 81(T)
Aus 171.....	45, 88(T)	Aus 422	44
Aus 172.....	45	Aus 442	69(T)
Aus 173.....	88(T)	Aus 444	42
Aus 175.....	89(T)	Aus 462	32
Aus 193.....	48(T)	Aus 487	46
Aus 197.....	49(T)	Aus 609	51(T)
Aus 200.....	29	Aus 626	28
Aus 219.....	50(T)	Aus 670	28
Aus 235.....	55(T)	Aus 721	69(T)
Aus 236.....	52(T), 53(T), 54(T)	Aus 725	69(T)
Aus 237.....	30	Aus 739	28
Aus 242.....	56(T)	Aus 740	28
Aus 243.....	56(T)	Aus 741	28, 72(T)
Aus 244.....	57(T), 58(T)	Aus 742	75(T), 76(T), 79(T)
Aus 245.....	57(T), 58(T)	Aus 743	76(T), 77(T), 79(T)
Aus 246.....	57(T)	Aus 744	77(T), 78(T)
Aus 249.....	59(P), 60(T)	Aus 752	86(T)
Aus 250.....	60(T)	Aus 753	38
Aus 251.....	61(T)	Aus 754	82(T)
Aus 252.....	31	Aus 755	85(T)
Aus 254.....	31	Aus 759	86(T)
Aus 256.....	63(T)	Aus 762	86(T)
Aus 257.....	62(T), 63(T)	Aus 766	90(T)
Aus 270.....	64(T)	Aus 776	42
Aus 293.....	65(T)	Aus 778	43
Aus 299.....	65(T)	Aus 780	87(T)
Aus 308.....	69(T)	Aus 781	87(T)
Aus 309.....	69(T)	Aus 801	47
Aus 310.....	69(T)	Aus 807	48(T)
Aus 311.....	69(T)	Aus 808	48(T), 49(T)

Aus Chart	Notices	ENC Cell	Notices
Aus 809.....	49(T)	AU130090.....	80(T), 81(T)
Aus 823.....	59(P), 60(T)	AU130120.....	69(T)
Aus 824.....	60(T), 61(T)	AU160090.....	86(T)
Aus 4060.....	32	AU160120.....	86(T)
Aus 4603.....	32	AU310127.....	69(T)
Aus 4622.....	32	AU310128.....	69(T)
Aus 4708.....	80(T), 81(T)	AU310130.....	69(T)
Aus 4709.....	86(T)	AU311125.....	69(T)
Aus 4720.....	69(T)	AU311126.....	69(T)
Aus 4721.....	69(T)	AU311127.....	69(T)
Aus 4722.....	69(T)	AU311128.....	69(T)
Aus 4726.....	86(T)	AU311130.....	69(T)
Aus 4727.....	86(T)	AU311131.....	69(T)
Aus 5000.....	28	AU311132.....	69(T)
Aus 5001.....	28	AU311142.....	65(T)
AX 0118E.....	86(T)	AU312122.....	69(T)
AX 0249E.....	59(P), 60(T)	AU312123.....	69(T)
AX 0309F.....	69(T)	AU312124.....	69(T)
AX 0310F.....	69(T)	AU312125.....	69(T)
AX 0311F.....	69(T)	AU312126.....	69(T)
AX 0312F.....	69(T)	AU312127.....	69(T)
AX 0313F.....	69(T)	AU312128.....	69(T)
AX 0314F.....	69(T)	AU313121.....	69(T)
AX 0315F.....	69(T)	AU313123.....	69(T)
AX 0317F.....	69(T)	AU313124.....	69(T)
AX 0321F.....	69(T)	AU313125.....	69(T)
AX 0322F.....	69(T), 70(T)	AU313126.....	69(T)
AX 0334E.....	82(T), 85(T)	AU313127.....	69(T)
AX 0343E.....	42	AU313128.....	69(T)
AX 0415F.....	79(T), 80(T)	AU314124.....	69(T)
AX 0754E.....	82(T)	AU314125.....	69(T)
AX 0755E.....	85(T)	AU314127.....	69(T)
AX 0776E.....	42	AU314128.....	69(T)
AX 0808E.....	48(T), 49(T)	AU315121.....	70(T)
AX 0809E.....	49(T)	AU321114.....	79(T)
AX 0823E.....	59(P), 60(T)	AU335120.....	86(T)
AX 4603F.....	32	AU335121.....	86(T)
AX 4708F.....	80(T), 81(T)	AU336119.....	86(T)
AX 4720F.....	69(T)	AU336120.....	86(T)
AX 4721F.....	69(T)	AU411129.....	69(T)
AX 4722F.....	69(T)	AU412129.....	69(T)
AX 60193.....	48(T)	AU413129.....	69(T)
AX 63112.....	83(T)	AU414126.....	69(T)
AX 63200.....	49(T)	AU418122.....	71(T)
AX 66002.....	82(T)	AU421115.....	75(T), 76(T)
AX 67192.....	48(T)	AU421149.....	61(T)
AX 70117.....	39, 84(T)	AU422114.....	77(T), 78(T)
AX 70193.....	48(T)	AU422115.....	77(T), 79(T)
AX 72309.....	69(T)	AU422149.....	59(P), 60(T)
		AU428153.....	54(T)
		AU430167.....	51(T)
INT Chart	Notices	AU432115.....	82(T)
INT 60.....	32	AU434115.....	85(T)
INT 603.....	32	AU434151.....	49(T)
INT 622.....	32	AU436118.....	86(T)
INT 708.....	80(T), 81(T)	AU436150.....	48(T)
INT 709.....	86(T)	AU439144.....	93(T)
INT 720.....	69(T)	AU443147.....	89(T)
INT 721.....	69(T)	AU444147.....	88(T)
INT 722.....	69(T)	AU5XXX58.....	72(T), 73(T), 74(T)
INT 726.....	86(T)	AU5111X4.....	84(T)
INT 727.....	86(T)	AU5XX113.....	83(T)

ENC Cell	Notices
AU5167X8.....	92(T)
AU5XX175.....	89(T)
AU5XX193.....	48(T)
AU5XX242.....	56(T)
AU5244X5.....	58(T)
AU5250P2.....	60(T)
AU5XX257.....	62(T), 63(T)
AU5270P1.....	64(T)
AU5XX299.....	65(T)

28 AUSTRALIA - Product

Australian Hydrographic Service (AA439121, AA447679)

New Chart

<i>Chart</i>	<i>Published</i>	<i>Title and description of amendments</i>	<i>Scale</i>	<i>Index Chart</i>	<i>Price</i>
Aus 49	20/11/2009	Australia - North West Coast - Plans in Western Australia (Sheet 2) Plans: Beagle Bay 16° 42' 28 S - 16° 59' 30 S 122° 21' 50 E - 122° 35' 84 E Lagrange Bay 18° 26' 50 S - 18° 43' 50 S 121° 33' 50 E - 121° 47' 96 E <i>New chart providing improved coverage of Beagle Bay and Lagrange Bay.</i>	1:50 000 1:50 000	Aus 5000	\$35.00

New Edition

<i>Chart</i>	<i>Published</i>	<i>Title and description of amendments</i>	<i>Scale</i>	<i>Index Chart</i>	<i>Price</i>
Aus 320	20/11/2009	Australia - North West Coast - Western Australia - Browse Island to Adele Island including Bonaparte Archipelago 13° 46' 24" S - 15° 41' 56" S 122° 44' 00" E - 125° 51' 53" E <i>New edition referred to WGS84 datum and updated for maritime boundaries.</i>	1:300 000	Aus 5000	\$35.00

New Chart to be published shortly

<i>Chart</i>	<i>Title</i>	<i>Scale</i>	<i>Expected Publication Date</i>	<i>Expected Stock Availability</i>
Aus 50	Australia - North West Coast - Western Australia - Approaches to Broome	1:50 000	15 January 2010	22 February 2010
Aus 626	Papua New Guinea - South Coast - Approaches to Daru	1:37 500	15 January 2010	22 February 2010
Aus 670	Papua New Guinea - New Britain - South Coast - Gasmata to Fulleborn including Linden Harbour	1:50 000	15 January 2010	22 February 2010
Aus 739	Australia - North West Coast - Western Australia - Bedout Islet to Port Hedland	1:150 000	15 January 2010	22 February 2010
Aus 740	Australia - North West Coast - Western Australia - Port Hedland to Port Walcott	1:150 000	15 January 2010	22 February 2010
Aus 741	Plan: Depuch Island Anchorage Australia - North West Coast - Western Australia - Approaches to Dampier Archipelago	1:20 000 1:150 000	15 January 2010	22 February 2010

New Edition to be published shortly

<i>Chart</i>	<i>Title</i>	<i>Scale</i>	<i>Expected Publication Date</i>	<i>Expected Stock Availability</i>
Aus 326	Australia - North West Coast - Western Australia - Bedout Islet to Port Walcott	1:300 000	15 January 2010	22 February 2010
Aus 5000	Plan: Mermaid Reef Australian Index of Nautical Charts - Northern Portion	1:12 500	15 January 2010	22 February 2010
Aus 5001	Australian Index of Nautical Charts - Southern Portion		15 January 2010	22 February 2010

Chart permanently withdrawn

<i>Chart</i>	<i>On publication of new edition</i>
Aus 320	Aus 320

29* AUSTRALIA - NEW SOUTH WALES - Port Jackson - Middle Harbour - Folly Point - Beacon
Australian Hydrographic Service (AA447124)

Aus 200 [806/2009]

On certain copies only

Substitute	starboard lateral beacon, with topmark for light beacon	33° 49'.21 S	151° 13'.52 E
------------	---	--------------	---------------

30* AUSTRALIA - QUEENSLAND - Brisbane River - Pelican Banks Reach - Infrastructure, maintained depth limits
Port of Brisbane Corporation (AA441726 - AA441730)

Aus 237 [1412/2009]

Insert	accompanying block	27° 23'.3 S	153° 09'.3 E
--------	--------------------	-------------	--------------

31* AUSTRALIA - QUEENSLAND - Whitsunday Group - Bird Island - Light beacon repositioned southeastwards
Maritime Safety Queensland (AA446563)

Aus 252 [1354/2009]

Move	light beacon	20° 05'.7 S	148° 52'.6 E
	to	20° 05'.79 S	148° 52'.59 E

Aus 254 (plan, Stonehaven Anchorage) [1415/2009]

Move	light beacon	20° 05'.78 S	148° 52'.65 E
	to	20° 05'.786 S	148° 52'.594 E

Delete	depth, 0 ₉ m	20° 05'.74 S	148° 52'.59 E
--------	-------------------------	--------------	---------------

32* PAPUA NEW GUINEA - Cape Gourdon to Blupblup Island - Depths
Geoscience Australia (AA447096)

Aus 388 [1306/2009]

Insert	depth, 386m, enclosed by contour	3° 32'.52 S	144° 50'.48 E
	depth, 886m, enclosed by contour	3° 31'.93 S	144° 55'.49 E
	depth, 708m, enclosed by contour	3° 31'.46 S	144° 57'.39 E
	depth, 838m	4° 13'.34 S	145° 20'.77 E
	depth, 363m, enclosed by contour	4° 19'.15 S	145° 28'.47 E

Substitute	depth, 740m, for depth, 776m	3° 25'.8 S	144° 47'.8 E
------------	------------------------------	------------	--------------

Delete	depth, 952m	4° 12'.5 S	145° 21'.9 E
	depth, 850m	4° 12'.9 S	145° 19'.9 E

Aus 462 [1306/2009]

Insert	depth, 211fm	3° 32'.52 S	144° 50'.48 E
	depth, 387fm	3° 31'.46 S	144° 57'.39 E
	depth, 458fm	4° 13'.34 S	145° 20'.77 E

Substitute	depth, 404fm, for depth, 424fm	3° 25'.9 S	144° 47'.9 E
------------	--------------------------------	------------	--------------

Delete	depth, 287fm	3° 33'.1 S	144° 49'.9 E
	depth, 986fm	3° 32'.1 S	144° 59'.9 E
	depth, 465fm	4° 13'.0 S	145° 20'.0 E

32* PAPUA NEW GUINEA - Cape Gourdon to Blupblup Island – Depths (continued)**Aus 4060 (INT 60) [1437/2009]**

Insert	depth, 363m	4° 19'.2 S	145° 28'.5 E
--------	-------------	------------	--------------

Delete	depth, 732m	4° 27'.0 S	145° 35'.0 E
--------	-------------	------------	--------------

Aus 4603 (INT 603) [1359/2009]

Insert	depth, 363m	4° 19'.2 S	145° 28'.5 E
--------	-------------	------------	--------------

Substitute	depth, 386m, for depth, 525m	3° 32'.5 S	144° 50'.5 E
------------	------------------------------	------------	--------------

Delete	depth, 732m	4° 26'.8 S	145° 35'.1 E
--------	-------------	------------	--------------

Aus 4622 (INT 622) [1359/2009]

Insert	depth, 708m, enclosed by contour	3° 31'.5 S	144° 57'.4 E
	depth, 363m	4° 19'.2 S	145° 28'.5 E

Substitute	depth, 740m, for depth, 776m	3° 25'.9 S	144° 47'.9 E
	depth, 386m, for depth, 525m	3° 32'.5 S	144° 50'.5 E

AX 4603F [1359/2009]

Insert	depth, 363m	4° 19'.2 S	145° 28'.5 E
--------	-------------	------------	--------------

Substitute	depth, 386m, for depth, 525m	3° 32'.5 S	144° 50'.5 E
------------	------------------------------	------------	--------------

Delete	depth, 732m	4° 26'.8 S	145° 35'.1 E
--------	-------------	------------	--------------

33* AUSTRALIA - WESTERN AUSTRALIA - Beagle Bay to Lagrange Bay - Chart limits; plans withdrawn

Australian Hydrographic Service (AA439121)

Aus 323 [601/2009]

Insert	magenta limits, with legend <i>Aus 49</i> in NW corner, between	16° 59'.30 S	122° 21'.50 E
		16° 59'.30 S	122° 35'.84 E
		16° 42'.28 S	122° 35'.84 E
		16° 42'.28 S	122° 21'.50 E
		16° 59'.30 S	122° 21'.50 E
	accompanying block A accompanying block B	15° 35'.0 S	121° 25'.0 E
		16° 00'.0 S	121° 25'.0 E

Delete	magenta limits, with legend <i>See Plan</i> , centred on	16° 53'.0 S	122° 31'.5 E
--------	--	-------------	--------------

Aus 324 [601/2009]

Insert	magenta limits, with legend <i>Aus 49</i> in NW corner, between	18° 43'.58 S	121° 33'.42 E
		18° 43'.58 S	121° 47'.88 E
		18° 26'.58 S	121° 47'.88 E
		18° 26'.58 S	121° 33'.42 E
		18° 43'.58 S	121° 33'.42 E

Delete	magenta limits, with legend <i>See Plan</i> , centred on plan, centred on	18° 38'.0 S	121° 41'.0 E
		19° 02'.0 S	122° 00'.0 E

34* AUSTRALIA - WESTERN AUSTRALIA - Broome - Depths

Broome Port Authority (AA446758, AA446759, DHDB 1358603)

Aus 51 [1423/2009]

Insert	depth, 3 ₉ m, and extend contour SE to enclose	18° 00'.655 S	122° 13'.029 E
	depth, 5 ₂ m	18° 00'.048 S	122° 13'.299 E
Delete	depth, 5 ₄ m	18° 00'.04 S	122° 13'.29 E

35* AUSTRALIA - WESTERN AUSTRALIA - Point Samson - Historic wreck

Australian Hydrographic Service (AA433281, AA433282), Western Australia Museum (AA446949)

Aus 55 [1361/2009]

Insert	stranded wreck, with magenta legend <i>Historic Wk</i> (see Note)	20° 37'.47 S	117° 11'.87 E
	accompanying note	20° 34'.8 S	117° 01'.8 E

Aus 56 [1101/2009]

Insert	stranded wreck, with magenta legend <i>Historic Wk</i> (see Note)	20° 37'.467 S	117° 11'.867 E
	accompanying note	20° 37'.8 S	117° 10'.1 E

36* AUSTRALIA - WESTERN AUSTRALIA - Dampier Archipelago - Delambre Island to Angel Island - Depths

UKHO (AA444871, AA444872)

Aus 55 [35/2010]

Insert	legend <i>Rep(1981)</i> , centred on	20° 27'.01 S	117° 00'.66 E
--------	--------------------------------------	--------------	---------------

Aus 57 [420/2009]

Insert	depth, 4 ₃ m, enclosed by contour	20° 30'.93 S	116° 48'.29 E
	upright sounding, 2 ₃ m, enclosed by broken contour		
	with legend <i>Rep(1981)</i>	20° 27'.02 S	117° 00'.51 E

37* AUSTRALIA - WESTERN AUSTRALIA - Dampier Archipelago - Mooring buoy withdrawn northwestwardsMV *Mermaid Provider*, Woodside (AA446773)**Aus 327 [1226/2009]**

Delete	mooring buoy	19° 37'.6 S	116° 30'.7 E
--------	--------------	-------------	--------------

38* AUSTRALIA - WESTERN AUSTRALIA - Lancelin - Bearing

UKHO (AA444871, AA444869)

Aus 105 [252/2009]*On certain copies only*

Amend	bearing to 076.6°	31° 00'.7 S	115° 15'.2 E
-------	-------------------	-------------	--------------

Aus 753 [NE 14/8/2009]

Amend	bearing to 076.6°	31° 01'.7 S	115° 09'.9 E
-------	-------------------	-------------	--------------

39* AUSTRALIA - WESTERN AUSTRALIA - Cockburn Sound - Mooring buoys withdrawn; light beacon established
Department of Transport WA (AA447152, AA447153), Fremantle Port Authority (AA445492)

Aus 117 [1313/2009]

Insert	west cardinal light beacon, Q(9)15s 3M, with topmark	32° 05'.188 S	115° 43'.863 E
Delete	mooring buoy	32° 07'.77 S	115° 44'.81 E
	mooring buoy	32° 07'.76 S	115° 44'.60 E
	mooring buoy	32° 07'.74 S	115° 44'.41 E

AX 70117 [1313/2009]

Insert	west cardinal light beacon, Q(9)15s 3M, with topmark	32° 05'.188 S	115° 43'.863 E
Delete	mooring buoy	32° 07'.77 S	115° 44'.81 E
	mooring buoy	32° 07'.76 S	115° 44'.60 E
	mooring buoy	32° 07'.74 S	115° 44'.41 E

40* AUSTRALIA - WESTERN AUSTRALIA - Bunbury - McKenna Point - Light beacon altered
Australian Hydrographic Service (AA447014)

Aus 115 (plan, Port of Bunbury) [1107/2009]

On certain copies only

Delete	east cardinal topmark	33° 18'.26 S	115° 38'.84 E
--------	-----------------------	--------------	---------------

41* AUSTRALIA - WESTERN AUSTRALIA - Flinders Bay - Navline
Australian Hydrographic Service (AA447169)

Aus 116 (plan, Flinders Bay) [949/2009]

Insert	a dashed line in a direction 067.6° for a distance of 400m, thence a continuous line for 2100m, with legend 247.6°, emanating from light	34° 20'.62 S	115° 10'.12 E
Delete	dashed and continuous line with legend, emanating from light	34° 20'.6 S	115° 10'.1 E

42* AUSTRALIA - SOUTH AUSTRALIA - Spencer Gulf - Buffalo Reef - Marine farms established
Department for Transport, Energy and Infrastructure SA Notice 60/2009 (AA446650)

Aus 343 [876/2009]

Insert	marine farm symbol, centred on	34° 42'.5 S	136° 30'.8 E
	marine farm symbol, centred on	34° 44'.3 S	136° 27'.9 E
	marine farm symbol, centred on	34° 44'.5 S	136° 23'.2 E
	marine farm symbol, centred on	34° 44'.0 S	136° 31'.9 E
Delete	depth, 20 ₃ m, and enclosing contour	34° 44'.7 S	136° 27'.5 E

Aus 345 [550/2009]

Insert	marine farm symbol, centred on	34° 44'.4 S	136° 23'.3 E
	marine farm symbol, centred on	34° 44'.2 S	136° 28'.0 E
	marine farm symbol, centred on	34° 42'.4 S	136° 30'.9 E
	marine farm symbol, centred on	34° 43'.9 S	136° 32'.0 E
Delete	depth, 11fm, and enclosing contour	34° 44'.6 S	136° 27'.6 E
	depth, 22fm	34° 44'.2 S	136° 27'.4 E
	depth, 23fm	34° 43'.5 S	136° 31'.7 E
	depth, 23fm	34° 44'.0 S	136° 28'.9 E
	depth, 22fm	34° 44'.4 S	136° 22'.7 E

42* AUSTRALIA - SOUTH AUSTRALIA - Spencer Gulf - Buffalo Reef - Marine farms established (continued)

Aus 444 [1227/2009]

Insert	marine farm symbol, centred on	34° 44'.4 S	136° 23'.3 E
	marine farm symbol, centred on	34° 44'.2 S	136° 28'.0 E
	marine farm symbol, centred on	34° 43'.9 S	136° 32'.0 E
	marine farm symbol, centred on	34° 42'.4 S	136° 30'.9 E
Delete	depth, 23fm	34° 44'.6 S	136° 24'.2 E
	depth, 22fm	34° 42'.4 S	136° 30'.2 E
	depth, 21fm	34° 43'.5 S	136° 26'.5 E
	depth, 20fm	34° 44'.0 S	136° 29'.5 E
	depth, 24fm	34° 43'.0 S	136° 33'.0 E

Aus 776 [700/2008]

Insert	marine farm symbol with legend (see Note), centred on	34° 44'.4 S	136° 23'.3 E
	dashed line with legend <i>Marine farm</i> (see Note), between	34° 44'.13 S	136° 26'.05 E
		34° 44'.40 S	136° 26'.05 E
		34° 44'.35 S	136° 29'.98 E
		34° 44'.08 S	136° 29'.98 E
		34° 44'.13 S	136° 26'.05 E
	dashed line with legend <i>Marine farm</i> (see Note), between	34° 42'.30 S	136° 29'.60 E
		34° 42'.57 S	136° 29'.60 E
		34° 42'.53 S	136° 32'.22 E
		34° 42'.27 S	136° 32'.22 E
34° 42'.30 S		136° 29'.60 E	
marine farm symbol with legend (see Note), centred on	34° 43'.9 S	136° 32'.0 E	
Delete	depth, 42m	34° 44'.3 S	136° 26'.3 E
	depth, 42m	34° 44'.2 S	136° 29'.1 E
	depth, 42m	34° 42'.3 S	136° 31'.4 E

AX 0343E [876/2009]

Insert	marine farm symbol, centred on	34° 44'.5 S	136° 23'.2 E
	marine farm symbol, centred on	34° 44'.3 S	136° 27'.9 E
	marine farm symbol, centred on	34° 42'.5 S	136° 30'.8 E
	marine farm symbol, centred on	34° 44'.0 S	136° 31'.9 E
Delete	depth, 20 ₃ m, and enclosing contour	34° 44'.7 S	136° 27'.5 E

AX 0776E [700/2008]

Insert	marine farm symbol with legend (see Note), centred on	34° 44'.4 S	136° 23'.3 E
	dashed line with legend <i>Marine farm</i> (see Note), between	34° 44'.13 S	136° 26'.05 E
		34° 44'.40 S	136° 26'.05 E
		34° 44'.35 S	136° 29'.98 E
		34° 44'.08 S	136° 29'.98 E
		34° 44'.13 S	136° 26'.05 E
	dashed line with legend <i>Marine farm</i> (see Note), between	34° 42'.30 S	136° 29'.60 E
		34° 42'.57 S	136° 29'.60 E
		34° 42'.53 S	136° 32'.22 E
		34° 42'.27 S	136° 32'.22 E
34° 42'.30 S		136° 29'.60 E	
marine farm symbol with legend (see Note), centred on	34° 43'.9 S	136° 32'.0 E	
Delete	depth, 42m	34° 44'.3 S	136° 26'.3 E
	depth, 42m	34° 44'.2 S	136° 29'.1 E
	depth, 42m	34° 42'.3 S	136° 31'.4 E

43* AUSTRALIA - SOUTH AUSTRALIA - Port Broughton - Light beacon established

Department for Transport, Energy and Infrastructure SA Notices 59/2009, 2/2010 (AA447173, AA448261)

Aus 778 [608/2009]

Insert	light beacon, <i>Fl.5s 9M</i> , without topmark	33° 33'.64 S	137° 52'.73 E
Delete	light beacon	33° 33'.8 S	137° 52'.4 E
	beacon	33° 33'.6 S	137° 52'.7 E

44* AUSTRALIA - TASMANIA - West Point - Depth

UKHO (AA446770)

Aus 422 [1274/2009]

Substitute	depth, <i>7fm</i> , enclosed by contour for depth, 14fm	40° 57'.9 S	144° 34'.6 E
------------	---	-------------	--------------

45* AUSTRALIA - TASMANIA - River Derwent - Hobart - Light buoys

Bellerive Yacht Club (AA443786 - AA443788), Marine and Safety Tasmania Notice M123/2009 (AA430672)

Aus 171 [1431/2009]

Amend	light buoy to Q	42° 53'.35 S	147° 22'.35 E
	light buoy to Q.Y	42° 53'.90 S	147° 22'.85 E

Aus 172 [1430/2009]

Amend	light buoy to Q	42° 53'.35 S	147° 22'.35 E
-------	-----------------	--------------	---------------

46* AUSTRALIA - BASS STRAIT - Obstruction

Australian Drilling Associates Pty Ltd (AA445117, AA447079)

Aus 487 [1429/2009]

Insert	depth, <i>66m</i> , enclosed by danger circle with legend <i>Obstn</i>	39° 53'.13 S	145° 22'.24 E
Delete	depth, 70m	39° 54'.0 S	145° 23'.8 E

47* AUSTRALIA - VICTORIA - Anderson Inlet - Light sectors

UKHO (AA446338)

Aus 801 [1435/2009]

Delete	light sectors red, white, green with legends emanating from light	38° 38'.4 S	145° 43'.0 E
--------	--	-------------	--------------

48(T)/2010 AUSTRALIA - NEW SOUTH WALES - Jervis Bay - Scientific instruments*Former Notice - 1233(T)/2009 is cancelled**Date - Until 31 March 2010*

Geoscience Australia (AA446305)

Subsurface scientific instruments exist in positions 35° 06'.21 S 150° 45'.89 E and 35° 06'.76 S 150° 42'.49 E.

Chart temporarily affected - Aus 193 - Aus 807 - Aus 808 – AX 0808E – AX 60193 – AX 67192 – AX 70193 - AU436150 - AU5XX193**49(T)/2010 AUSTRALIA - NEW SOUTH WALES - Cape Baily to Ben Buckler - Scientific instruments***Former Notice - 1373(T)/2009 is cancelled**Date - Until 30 June 2011*

Sydney Institute of Marine Science (AA375220, AA420046)

Subsea moorings (25 metres below the surface) exist in positions (WGS84 datum) as follows:

33° 53'.76 S 151° 17'.30 E	33° 53'.99 S 151° 17'.30 E
33° 54'.23 S 151° 17'.72 E	33° 54'.51 S 151° 18'.14 E
33° 54'.76 S 151° 18'.56 E	33° 55'.02 S 151° 19'.01 E
33° 55'.28 S 151° 19'.45 E	33° 55'.54 S 151° 19'.89 E
33° 55'.80 S 151° 20'.31 E	33° 56'.06 S 151° 21'.17 E
33° 56'.32 S 151° 22'.61 E	33° 56'.60 S 151° 22'.06 E
33° 56'.85 S 151° 22'.50 E	33° 57'.12 S 151° 22'.95 E
33° 57'.40 S 151° 23'.39 E	33° 57'.91 S 151° 24'.25 E
33° 58'.65 S 151° 23'.84 E	33° 58'.20 S 151° 24'.64 E
33° 58'.49 S 151° 25'.08 E	33° 58'.77 S 151° 25'.57 E
33° 59'.08 S 151° 26'.06 E	33° 59'.33 S 151° 26'.47 E
33° 59'.97 S 151° 27'.33 E	34° 00'.21 S 151° 27'.85 E
34° 00'.48 S 151° 28'.27 E	34° 00'.77 S 151° 28'.74 E
34° 01'.33 S 151° 29'.16 E	34° 01'.31 S 151° 29'.63 E
34° 01'.59 S 151° 30'.08 E.	

Chart temporarily affected - Aus 197 - Aus 808 - Aus 809 – AX 0808E – AX 0809E – AX 63200 - AU434151**50(T)/2010 AUSTRALIA - NEW SOUTH WALES - Hastings River - Bar crossing; light discontinued**

NSW Maritime Notice NC0954 (AA447802)

The rear leading light (31° 25'.63 S 152° 54'.71 E) has been temporarily discontinued.

The recommended approach into the Hastings River is with the front leading light bearing 250°; mariners should refer to the estuary and river entrances chart note.

Chart temporarily affected - Aus 219**51(T)/2010 AUSTRALIA - TASMAN SEA - Norfolk Island - Wreck**

Australian Transport Safety Bureau (AA446984)

A wreck marked by buoys exists in position 29° 03'.27 S 167° 52'.41 E.

Chart temporarily affected - Aus 609 - AU430167**52(T)/2010 AUSTRALIA - QUEENSLAND - Moreton Bay - Ship to ship transfer completed***Former Notice - 1179(T)/2009 is cancelled*

Maritime Safety Queensland Notice 662(T)/2009 (AA432007)

Cancel this notice on receipt.

Chart formerly affected - Aus 236

53(T)/2010 AUSTRALIA - QUEENSLAND - Moreton Bay - Russell Island - Harbour works completed*Former Notice* - 1180(T)/2009 is cancelled

Maritime Safety Queensland Notice 643(T)/2009 (AA431938)

Cancel this notice on receipt.

Chart formerly affected - Aus 236**54(T)/2010 AUSTRALIA - QUEENSLAND - Moreton Bay - Redcliffe - Scientific instrument southeastwards***Former Notice* - 1239(T)/2009 is cancelled

Maritime Safety Queensland Notice 5(T)/2010 (AA447758)

A special light buoy, *Fl(5)Y.20s*, exists in position 27° 15'.14 S 153° 12'.00 E (WGS84 datum).

Mariners are not to use the buoy as a mooring.

Chart temporarily affected - Aus 236 - AU428153**55(T)/2010 AUSTRALIA - QUEENSLAND - Point Cartwright - Obstruction southeastwards removed***Former Notice* - 503(T)/2009 is cancelled

Maritime Safety Queensland Notice 823/2009 (AA444937)

Cancel this notice on receipt.

Chart formerly affected - Aus 235 - Aus 365**56(T)/2010 AUSTRALIA - QUEENSLAND - Bundaberg - Depth information***Former Notice* - 1014(T)/2009 is cancelled

Maritime Safety Queensland Notice 18(T)/2010 (AA448309)

Available depths as at 13 January 2010:

	<i>Metres</i>
Sea Reach	9.5
Middle Reach	9.5
Inner Reach	9.5
Swing Basin	8.0
* Oil Berth	9.1
* BST Berth	10.7

The deep draught departure channel from the BST berth to Middle Reach has a depth of 9.1m.

* Indicates revised entry.

Chart temporarily affected - Aus 242 - Aus 243 - AU5XX242

57(T)/2010 AUSTRALIA - QUEENSLAND - Gladstone - Depth information*Former Notice - 1015(T)/2009 is cancelled*

Maritime Safety Queensland Notice 17(T)/2010 (AA448308)

Available depths as at 24 November 2009:

	<i>Metres</i>
Sea Channels:	
* Wild Cattle Cutting	15.8
* Boyne Island Cutting	16.3
Boyne Island Extension Channel	9.0
* Golding Cutting	16.0
* South Bypass Channel	7.4
* Gatcombe Channel	16.0
* Gatcombe Bypass Channel	13.4
Inner Channels:	
Auckland Channel	15.8
Auckland Bypass Channel	6.8
Clinton Channel	16.0
Clinton Bypass Channel	10.6
* Clinton Swing Basin	10.9
Targinie Channel	10.6
* Targinie Swing Basin East	10.9
* Targinie Swing Basin West	8.9
Berths:	
Boyne Smelter Wharf	15.0
* South Trees East Wharf	13.8
* South Trees West Wharf	13.0
Barney Point Wharf (east approach)	13.5
* Barney Point Wharf (west approach)	11.5
Barney Point Wharf	15.0
Auckland Point No 1 Wharf	11.3
Auckland Point No 2 Wharf	11.3
* Auckland Point No 3 Wharf	11.4
* Auckland Point No 4 Wharf	11.3
* Clinton No 1 Wharf	19.2
* Clinton No 2 Wharf	18.4
* Clinton No 3 Wharf	18.6
* Clinton No 4 Wharf	19.1
* Fishermans Landing Wharf No 2	13.3
* Fishermans Landing Wharf No 4	11.4
* Fishermans Landing Wharf No 5	11.4
* Indicates new or revised entry.	

Chart temporarily affected - Aus 244 - Aus 245 - Aus 246**58(T)/2010 AUSTRALIA - QUEENSLAND - Gladstone - Fishermans Landing - Harbour works; dredging operations completed***Former Notice - 560(T)/2009 is cancelled*

Maritime Safety Queensland Notice 10/2010 (AA448166),

Cancel this notice on receipt.

Note: charts will be updated on receipt of survey data.**Chart formerly affected - Aus 244 - Aus 245 - AU5244X5**

59(P)/2010 AUSTRALIA - QUEENSLAND - Hay Point - Anchorages established

Date - On or about 24 December 2009

Maritime Safety Queensland Notices 857/2009, 858/2009 (AA447784, AA447785)

Anchorages exist as follows:

<i>Anchorage desig</i>	<i>Position</i>	<i>Radius of swinging circle in metres</i>
OS42	21° 14'.50 S 149° 32'.50 E	1390
OS43	21° 14'.50 S 149° 34'.20 E	1390
OS44	21° 14'.50 S 149° 42'.00 E	1390
OS45	21° 14'.60 S 149° 44'.30 E	1850
OS46	21° 14'.60 S 149° 46'.55 E	1850
OS47	21° 14'.60 S 149° 48'.80 E	1850
OS48	21° 14'.60 S 149° 51'.05 E	1850
OS49	21° 14'.60 S 149° 53'.30 E	1850
OS50	21° 12'.65 S 149° 52'.30 E	1850
OS51	21° 10'.47 S 149° 52'.30 E	1850
OS52	21° 08'.41 S 149° 49'.40 E	1850
OS53	21° 08'.41 S 149° 51'.60 E	1850
OS54	21° 06'.32 S 149° 46'.60 E	1850
OS55	21° 06'.32 S 149° 48'.80 E	1850
OS56	21° 06'.32 S 149° 51'.00 E	1850
OS57	21° 04'.25 S 149° 43'.70 E	1850
OS58	21° 04'.25 S 149° 45'.90 E	1850
OS59	21° 04'.25 S 149° 48'.10 E	1850
N21	21° 10'.00 S 149° 21'.00 E	795
N22	21° 10'.00 S 149° 22'.00 E	795
N23	21° 10'.00 S 149° 23'.00 E	795
N24	21° 10'.00 S 149° 24'.00 E	795
N25	21° 10'.00 S 149° 25'.00 E	795
N26	21° 10'.00 S 149° 26'.00 E	795
N27	21° 10'.00 S 149° 27'.00 E	795
N28	21° 10'.00 S 149° 28'.00 E	795
N29	21° 10'.00 S 149° 29'.00 E	795

Note: charts will be updated in due course.

Chart which will be affected - Aus 249 - Aus 823 – AX 0249E – AX 0823E - AU422149**60(T)/2010 AUSTRALIA - QUEENSLAND - Hay Point to Bailey Islet - Scientific instruments**

Former Notice - 1450(T)/2009 is cancelled

Maritime Safety Queensland Notice 5(T)/2010 (AA447758)

Special light buoys, F(5)Y.20s, exist in positions:

21° 16'.32 S 149° 18'.70 E

21° 05'.47 S 149° 33'.01 E.

Mariners are not to use these buoys as moorings.

Chart temporarily affected - Aus 249 - Aus 250 - Aus 823 - Aus 824 – AX 0249E – AX 0823E - AU422149 - AU5250P2**61(T)/2010 AUSTRALIA - QUEENSLAND - Wigton Island - Wreck salvaged**

Former Notice - 1385(T)/2009 is cancelled

Maritime Safety Queensland Notice 13(T)/2010 (AA448149)

Cancel this notice on receipt.

Chart formerly affected - Aus 251 - Aus 824 - AU421149

62(T)/2010 AUSTRALIA - QUEENSLAND - Townsville - Ross River - Harbour works

Former Notice - 1192(T)/2009 is cancelled

Maritime Safety Queensland Notices 648(T)/2009, 849(T)/2009 (AA432006, AA447012)

Abutment works for the Townsville Port Access Road Bridge are in progress.

A port lateral light buoy, *Fl.R.2-5s*, exists in position 19° 16'.16 S 146° 50'.13 E, which marks the extremity of the works.

A starboard lateral light buoy, *Fl.G.2-5s*, exists in position 19° 16'.13 S 146° 50'.13 E, which marks the abutment rock walls that are being constructed.

A silt curtain will enclose the reclamation works in preparation for the construction of the rock wall and bridge embankment. The works are expected to protrude approximately 50m into the river from the eastern bank and will be lit by flashing lights.

Mariners are advised to navigate with caution in the area.

Chart temporarily affected - Aus 257 - AU5XX257**63(T)/2010 AUSTRALIA - QUEENSLAND - Townsville - Depth information**

Former Notice - 1286(T)/2009 is cancelled

Maritime Safety Queensland Notice 711(T)/2009 (AA447013)

Available depths as at 22 December 2009:

	<i>Metres</i>	<i>Remarks</i>
Sea Channel	11.8	
* Platypus Channel	11.8	
Outer Harbour:		
Arrival Channel	7.6	West of a line from dolphin across end of berth pocket to edge of arrival channel
* Departure Channel	11.9	
Inner Harbour:		
Harbour	12.0	
Berths:		
* No 1	11.9	
* No 2	12.2	
* No 3	12.1	
* No 4	10.3	
* No 7	11.1	
* No 8	9.9	
* No 9	12.0	
No 10	9.6	To seaward dolphin
* No 11	12.3	
CB Marine	1.9	
Between No 7 and No 8	10.4	Seaward of zero mark at No 7
* Between No 9 and No 10	10.6	Seaward of zero mark at No 10
* Ross River Channel	2.1	
Ross Creek	-	No declared depth

* Indicates revised entry.

Chart temporarily affected - Aus 256 - Aus 257 - AU5XX257**64(T)/2010 AUSTRALIA - QUEENSLAND - Port Douglas - Dredging operations**

Date - Until 24 February 2010

Maritime Safety Queensland Notice 12(T)/2010 (AA448143)

The dredge *Everglade* is conducting dredging operations in the entrance channel (16° 29'.00 S 145° 27'.55 E).

The dredge will deploy anchors marked by special buoys and will monitor VHF Ch 16 and UHF Ch 25.

Mariners are advised to navigate with caution in the area.

Chart temporarily affected - Aus 270 - AU5270P1

65(T)/2010 AUSTRALIA - TORRES STRAIT - Madge Reef - Light beacon unlit
 Maritime Safety Queensland Notice 11(T)/2010 (AA448142)

The light beacon (10° 35'.22 S 142° 14'.36 E (WGS84 datum)) is unlit.

Chart temporarily affected - Aus 293 - Aus 299 - AU311142 - AU5XX299

66(T)/2010 AUSTRALIA - QUEENSLAND - Weipa - Albatross Bay - Obstruction
 Maritime Safety Queensland Notice 860(T)/2009 (AA447000)

A lost anchor exists in anchorage A in position 12° 43'.5 S 141° 39'.0 E.

Chart temporarily affected - Aus 4

67(T)/2010 AUSTRALIA - QUEENSLAND - Karumba - Shoaling; light buoys established
Former Notice - 1195(T)/2009 is cancelled
 Maritime Safety Queensland Notice 853(T)/2009 (AA447001)

Shoaling exists in the entrance channel.

The channel realignment is marked by special light buoys, *Fl. Y.2-5s*, in the following positions:

17° 26'.74 S 140° 45'.23 E
 17° 26'.62 S 140° 45'.02 E
 17° 26'.44 S 140° 44'.91 E.

Chart temporarily affected - Aus 6

68(T)/2010 AUSTRALIA - QUEENSLAND - Karumba - Norman River - Wreck salvaged
Former Notice - 1457(T)/2009 is cancelled
 Maritime Safety Queensland Notice 854/2009 (AA447002)

Cancel this notice on receipt.

Chart formerly affected - Aus 6

69(T)/2010 AUSTRALIA - TIMOR SEA - Seismic survey
Date - Until 31 March 2010
 Petroleum Geo-Services (AA448210, AA448211)

MV *Beaufort Explorer* with a 8500m towed array is conducting a survey in the area bounded by the following positions (WGS84 datum):

13° 35'.0 S 128° 00'.0 E
 12° 55'.0 S 129° 25'.0 E
 10° 55'.0 S 129° 35'.0 E
 10° 45'.0 S 135° 10'.0 E
 8° 55'.0 S 133° 25'.0 E
 9° 50'.0 S 128° 05'.0 E
 12° 15'.0 S 122° 50'.0 E.

Chart temporarily affected - Aus 308 - Aus 309 - Aus 310 - Aus 311 - Aus 312 - Aus 313 - Aus 314 - Aus 315 - Aus 316 - Aus 317 - Aus 318 - Aus 321 - Aus 322 - Aus 442 - Aus 721 - Aus 725 - Aus 4720 (INT 720) - Aus 4721 (INT 721) - Aus 4722 (INT 722) - AX 0309F - AX 0310F - AX 0311F - AX 0312F - AX 0313F - AX 0314F - AX 0315F - AX 0317F - AX 0321F - AX 0322F - AX 4720F - AX 4721F - AX 4722F - AX 72309 - AU130120 - AU310127 - AU310128 - AU310130 - AU311125 - AU311126 - AU311127 - AU311128 - AU311130 - AU311131 - AU311132 - AU312122 - AU312123 - AU312124 - AU312125 - AU312126 - AU312127 - AU312128 - AU313121 - AU313123 - AU313124 - AU313125 - AU313126 - AU313127 - AU313128 - AU314124 - AU314125 - AU314127 - AU314128 - AU411129 - AU412129 - AU413129 - AU414126

70(T)/2010 AUSTRALIA - WESTERN AUSTRALIA - Scott Reef - Scientific instrument recovered

Former Notice - 1292(T)/2009 is cancelled
MetOcean Engineers (AA447760)

Cancel this notice on receipt.

Chart formerly affected - Aus 43 - Aus 322 – AX 0322F - AU315121

71(T)/2010 AUSTRALIA - WESTERN AUSTRALIA - Lacepede Channel to Cape Boileau - Scientific instruments

Date - Until 31 July 2010
MetOcean Engineers (AA447760)

Scientific instruments exist as follows (WGS84 datum):

<i>Position</i>	<i>Remarks</i>
17° 13'.93 S 122° 05'.06 E	subsurface
17° 28'.27 S 122° 05'.03 E	subsurface
17° 30'.07 S 121° 53'.45 E	subsurface
17° 30'.81 S 121° 53'.88 E	lit buoy, <i>Fl(5)Y.20s</i>
17° 30'.82 S 121° 53'.94 E	subsurface
17° 43'.53 S 122° 02'.03 E	subsurface

Chart temporarily affected - Aus 323 - Aus 324 - AU418122

72(T)/2010 AUSTRALIA - WESTERN AUSTRALIA - Dampier - Mermaid Sound - Light buoy damaged

Former Notice - 1463(T)/2009 is cancelled
Dampier Port Authority Notices 36/2009, 2/2010 (AA445621, AA447909)

The light buoy (20° 25'.45 S 116° 42'.95 E (WGS84 datum)) is unlit and the AIS and racon are non operational.

Chart temporarily affected - Aus 57 - Aus 58 - Aus 741 - AU5XXX58

73(T)/2010 AUSTRALIA - WESTERN AUSTRALIA - Dampier - Dredging operations

Former Notice - 1081(T)/2009 is cancelled
Date - Until 28 February 2010
Dampier Port Authority Notices 37/2009, 1/2010 (AA447009, AA447789)

The dredge *Leonardo Da Vinci* and support vessel *BKM 101* are conducting dredging operations in the area bounded by the following positions (WGS84 datum):

20° 33'.72 S 116° 43'.13 E
20° 33'.78 S 116° 42'.91 E
20° 35'.06 S 116° 44'.08 E
20° 34'.97 S 116° 44'.23 E.

The plough-barge, MT *Cape Mac* and support vessels will continue operating in the Pluto Channel.

All vessels involved in the operations will monitor VHF Ch 11 and Ch 16.

Mariners are advised to navigate with caution in the area.

Chart temporarily affected - Aus 57 - Aus 58 - Aus 59 - AU5XXX58

74(T)/2010 AUSTRALIA - WESTERN AUSTRALIA - Dampier - Drilling operations completed

Former Notice - 1247(T)/2009 is cancelled
Dampier Port Authority Notice 29/2009 (AA434980)

Cancel this notice on receipt.

Chart formerly affected - Aus 57 - Aus 58 - Aus 59 - AU5XXX58

75(T)/2010 AUSTRALIA - WESTERN AUSTRALIA - Barrow Island - Town Point - Harbour works; exclusion zone

Date - Until 30 June 2011

Department of Transport WA Notice 99/2009 (AA447736)

Works associated with the installation of temporary intake and outfall pipelines are in progress in the following area:

Position	Remarks
20° 47'.2 S 115° 27'.7 E	
20° 47'.5 S 115° 28'.3 E	lit special buoy
20° 47'.7 S 115° 28'.2 E	lit special buoy
20° 47'.4 S 115° 27'.5 E.	

An exclusion zone exists within the area.

A barge and support vessels are on site and will display appropriate lights and shapes. Support vessels will monitor VHF Ch 10 and Ch 16.

Chart temporarily affected - Aus 62 - Aus 742 - AU421115**76(T)/2010 AUSTRALIA - WESTERN AUSTRALIA - Barrow Island - Scientific instruments**

Date - Until 31 December 2011

Department of Transport WA Notice 103A/2009 (AA446956)

Scientific instruments marked by special light buoys, *Fl(5)Y.20s*, exist in the following positions (WGS84 datum):

20° 46'.79 S 115° 29'.29 E
20° 47'.04 S 115° 29'.78 E
20° 47'.39 S 115° 29'.94 E
20° 48'.58 S 115° 28'.59 E
20° 49'.01 S 115° 30'.83 E
20° 49'.53 S 115° 29'.20 E
20° 49'.95 S 115° 30'.35 E
20° 53'.06 S 115° 30'.78 E
20° 54'.36 S 115° 32'.25 E.

Chart temporarily affected - Aus 62 - Aus 742 - Aus 743 - AU421115**77(T)/2010 AUSTRALIA - WESTERN AUSTRALIA - Thevenard Island to Ashburton Road - Scientific instruments**

Former Notice - 1333(T)/2009 is cancelled

Date - Until 31 December 2010

MetOcean Engineers (AA447760)

Scientific instruments exist as follows:

Position (WGS84 datum)	Remarks
21° 21'.86 S 114° 51'.20 E	5 poly floats
21° 22'.08 S 114° 50'.91 E	lit buoy, <i>Fl(5)Y.20s</i>
21° 22'.08 S 114° 51'.00 E	5 poly floats
21° 29'.15 S 115° 00'.86 E	lit buoy, <i>Fl(5)Y.20s</i>
21° 29'.21 S 115° 00'.94 E	5 poly floats
21° 30'.12 S 115° 02'.92 E	lit buoy, <i>Fl(5)Y.20s</i>
21° 31'.40 S 114° 54'.90 E	lit buoy, <i>Fl(5)Y.20s</i>
21° 35'.13 S 114° 56'.38 E	lit buoy, <i>Fl(5)Y.20s</i>
21° 35'.17 S 114° 56'.38 E	5 poly floats
21° 36'.30 S 115° 04'.94 E	lit buoy, <i>Fl(5)Y.20s</i>
21° 36'.30 S 115° 04'.75 E	5 poly floats
21° 39'.32 S 115° 00'.77 E	lit buoy, <i>Fl(5)Y.20s</i>

Chart temporarily affected - Aus 64 - Aus 328 - Aus 743 - Aus 744 - AU422114 - AU422115

78(T)/2010 AUSTRALIA - WESTERN AUSTRALIA - North West Cape - FPSO on station

Former Notice - 680(T)/2009 is cancelled
Apache Energy Ltd (AA447069)

Cancel this notice on receipt.

Chart formerly affected - Aus 328 - Aus 329 - Aus 744 - AU422114

79(T)/2010 AUSTRALIA - WESTERN AUSTRALIA - Thevenard Island to Exmouth Plateau - Scientific instruments

Date - Until 31 January 2011
Department of Transport WA Notice 1/2010 (AA447883, AA446614, AA446615)

Scientific instruments exist as follows:

<i>Position</i>	<i>Remarks</i>
19° 55'.44 S 113° 14'.28 E	subsurface
19° 55'.56 S 113° 13'.74 E	lit buoy, <i>Fl(5)Y.20s</i>
20° 35'.94 S 114° 43'.44 E	subsurface
20° 36'.48 S 114° 44'.88 E	subsurface
20° 37'.56 S 114° 47'.94 E	subsurface
20° 45'.48 S 114° 55'.92 E	subsurface
21° 08'.34 S 115° 18'.30 E	lit buoy, <i>Fl(5)Y.20s</i> and 2 white poly-floats
21° 20'.52 S 115° 03'.30 E	lit buoy, <i>Fl(5)Y.20s</i> and 2 white poly-floats
20° 59'.28 S 115° 09'.78 E	lit buoy, <i>Fl(5)Y.20s</i> and 2 white poly-floats
21° 02'.04 S 115° 10'.56 E	lit buoy, <i>Fl(5)Y.20s</i> and 2 white poly-floats
21° 12'.30 S 115° 09'.00 E	lit buoy, <i>Fl(5)Y.20s</i> and 2 white poly-floats

Chart temporarily affected - Aus 63 - Aus 64 - Aus 328 - Aus 415 - Aus 416 - Aus 742 - Aus 743 - AX 0415F - AU321114 - AU422115

80(T)/2010 AUSTRALIA - WESTERN AUSTRALIA - Exmouth Plateau - Seismic survey completed

Former Notice - 1332(T)/2009 is cancelled
RPS Australia and South East Asia (AA438337, AA438338)

Cancel this notice on receipt.

Chart formerly affected - Aus 415 - Aus 4708(INT708) - AX 0415F - AX 4708F - AU130090

81(T)/2010 AUSTRALIA - WESTERN AUSTRALIA - Point Cloates to Steep Point - Seismic survey completed

Former Notice - 1199(T)/2009 is cancelled
Searcher Seismic Pty Ltd (AA430663)

Cancel this notice on receipt.

Chart formerly affected - Aus 329 - Aus 330 - Aus 416 - Aus 4708 (INT 708) - AX 4708F - AU130090

82(T)/2010 AUSTRALIA - WESTERN AUSTRALIA - Alkimos Reef - Harbour works; exclusion zone

Date - Until 31 August 2010
Department of Transport WA Notice 70/2009 (AA447737)

Works associated with the construction of an outfall pipeline are in progress in the following area:

31° 36'.66 S 115° 39'.63 E
31° 37'.91 S 115° 36'.30 E
31° 38'.41 S 115° 36'.56 E
31° 37'.21 S 115° 39'.76 E.

An exclusion zone marked by special spar light buoys exists within the area.

Support vessels are on site to direct vessel traffic and can be contacted on VHF Ch 16.

Chart temporarily affected - Aus 334 - Aus 754 - AX 0334E - AX 0754E - AX 66002 - AU432115

15 January 2010

83(T)/2010 AUSTRALIA - WESTERN AUSTRALIA - Fremantle - Harbour works

Former Notice - 975(T)/2009 is cancelled
Fremantle Ports 13(T)/2009 (AA446096)

Works associated with the construction of the new seawall are in progress.

An exclusion zone exists in the area bounded by the following positions:

<i>Position</i>	<i>Remarks</i>
32° 02'.41 S 115° 44'.44 E	
32° 02'.34 S 115° 44'.41 E	
(a) 32° 02'.37 S 115° 44'.15 E	A lit (<i>Fl. Y.2s</i>) floating pipeline exists between positions (a) to (d)
(b) 32° 02'.07 S 115° 43'.91 E	
(c) 32° 02'.10 S 115° 43'.79 E	
(d) 32° 02'.43 S 115° 44'.04 E	
32° 02'.71 S 115° 43'.83 E	
32° 02'.81 S 115° 43'.87 E.	

A 50m exclusion zone exists around all dredges and support vessels operating within Port of Fremantle waters and 30m while at berth.

Mariners are advised to navigate with caution in the area.

Chart temporarily affected - Aus 112 - Aus 113 – AX 63112 - AU5XX113

84(T)/2010 AUSTRALIA - WESTERN AUSTRALIA - Fremantle - Dredging operations completed

Former Notice - 1030(T)/2009 is cancelled
Fremantle Ports Notice 9(T)/2009 (AA424524)

Cancel this notice on receipt.

Chart formerly affected - Aus 114 - Aus 117 – AX 70117 - AU5111X4

85(T)/2010 AUSTRALIA - WESTERN AUSTRALIA - Binningup - Offshore works; exclusion zone

Date - Until 13 January 2012
Department of Transport WA Notice 2/2010 (AA448304)

Works associated with the installation of submarine pipelines are in progress in the following area:

33° 07'.53 S 115° 41'.39 E (WGS84 datum)
33° 07'.52 S 115° 40'.51 E
33° 08'.07 S 115° 40'.50 E
33° 08'.08 S 115° 41'.38 E.

An exclusion zone marked by special light buoys exists within the area.

A barge and support vessels are on site and can be contacted on VHF Ch 12 and Ch 16.

Chart temporarily affected - Aus 115 - Aus 334 - Aus 335 - Aus 755 – AX 0334E – AX 0755E - AU434115

86(T)/2010 AUSTRALIA - WESTERN AUSTRALIA - Eclipse Island to Esperance Canyon - Seismic survey

Former Notice - 1340(T)/2009 is cancelled
Enovation Resources (AA439457, AA439458)

Cancel this notice on receipt.

Chart formerly affected - Aus 118 - Aus 336 - Aus 337 - Aus 752 - Aus 759 - Aus 762 - Aus 4709 (INT 709) - Aus 4726 (INT 726) - Aus 4727 (INT 727) – AX 0118E - AU160090 - AU160120 - AU335120 - AU335121 - AU336119 - AU336120 - AU436118

87(T)/2010 AUSTRALIA - SOUTH AUSTRALIA - Port Stanvac - Offshore works

Former Notice - 1201(T)/2009 is cancelled

Date - Until 31 January 2011

Department for Transport, Energy and Infrastructure SA Notices 43/2009, 58/2009 (AA431916, AA447769)

Installation of infrastructure for a desalination plant are in progress in an area bounded by the following positions (WGS84 datum):

35° 06'.10 S 138° 27'.85 E
35° 05'.74 S 138° 28'.06 E
35° 05'.99 S 138° 28'.69 E
35° 06'.36 S 138° 28'.42 E.

The boundary is marked by special light buoys.

All vessels associated with the works will display appropriate lights and shapes.

Unauthorised vessels are prohibited from entering the area.

Chart temporarily affected - Aus 125 - Aus 780 - Aus 781

88(T)/2010 AUSTRALIA - TASMANIA - Little Oyster Cove - Harbour works; light beacon discontinued

D Davey (AA448185), Marine and Safety Tasmania Notice M5/2010 (AA448186)

Harbour works associated with the expansion of the marina (43° 07'.5 S 147° 15'.2 E) are in progress.

The starboard beacon (43° 07'.49 S 147° 15'.41 E) has been removed.

Mariners are advised to navigate with caution in the area.

Chart temporarily affected - Aus 171 - Aus 173 - AU444147

89(T)/2010 AUSTRALIA - TASMANIA - Spring Bay - Harbour works completed

Former Notice - 1202(T)/2009 is cancelled

Marine and Safety Tasmania Notice M137/2009 (AA433353)

Cancel this notice on receipt.

Chart formerly affected - Aus 170 - Aus 175 - AU443147 - AU5XX175

90(T)/2010 AUSTRALIA - TASMANIA - Maria Island - Light buoy established

Former Notice - 417(P)/2008 is cancelled

UKHO (AA448886)

Cancel this notice on receipt.

Chart formerly affected - Aus 766

91(T)/2010 AUSTRALIA - TASMANIA - Georges Bay - Wreck

Former Notice - 1204(T)/2009 is cancelled

Marine and Safety Tasmania Notice M3/2010 (AA447779)

A stranded wreck exists in position 41° 16'.24 S 148° 20'.07 E, with a floating line marked by a white poly-float leading to an anchor in position 41° 16'.20 S 148° 20'.13 E.

Mariners are advised to navigate with caution in the area.

Chart temporarily affected - Aus 169

92(T)/2010 AUSTRALIA - TASMANIA - River Tamar - Windermere - Obstruction
Marine and Safety Tasmania Notice M7/2010 (AA448264)

A submerged cable exists in the vicinity of position 41° 19'.08 S 147° 00'.23 E.

Chart temporarily affected - Aus 168 - AU5167X8

93(T)/2010 AUSTRALIA - VICTORIA - Port Phillip - Rosebud - Harbour works completed

Former Notice - 928(T)/2009 is cancelled
Victorian Notice 175/2009 (AA446100)

Cancel this notice on receipt.

Chart formerly affected - Aus 143 - Aus 158 - AU439144

94(T)/2010 AUSTRALIA - VICTORIA - Lakes Entrance - Scientific instrument recovered

Former Notice - 799(T)/2007 is cancelled
Victorian Notice 1/2010 (AA447087)

Cancel this notice on receipt.

Chart formerly affected - Aus 357A

95(T)/2010 AUSTRALIA - TEMPORARY AND PRELIMINARY NOTICES

Former Notice - 1207(T)/2009 is cancelled
Australian Hydrographic Service (AA433830)

<i>Notice</i>	<i>Charts affected</i>	<i>Locality and Subject</i>
1466/2009	Aus 487-AU340145	BASS STRAIT
1470/2009	Aus 357a-487-AU439148	Drilling operations
		Drilling operations
		CORAL SEA
835/2008	Aus 4060-4602	<i>Capel Bank to Nova Bank</i>
		Shoaling
		<i>Lihou Reef</i>
653/2001	Aus 614	Shoals
		NEW SOUTH WALES
317/2006	Aus 191	<i>Batemans Bay</i>
		Shoaling; buoy
1035/2008	Aus 193-807-808-AX0808E-60193-70193-AU5XX193	<i>Beecroft Peninsula</i>
		Light buoy off station
715/2009	Aus 198-199-AU5198X9	<i>Botany Bay</i>
1113/2009	Aus 198-199-AU5198X9	Light buoys moved
1114/2009	Aus 198-199-AU5198X9	Harbour works
1115/2009	Aus 198-199-AU5198X9	Pipeline
		Dredging operations; pipeline
49/2010	Aus 197-808-809-AX0808E-0809E-63200-AU434151	<i>Cape Baily to Ben Buckler</i>
		Scientific instruments
746/2008	Aus 197-808-AX0808E	<i>Cape Banks</i>
		Scientific instruments northeastwards
1234/2009	Aus 197-808-AX0808E-AU434151-435151	<i>Cape Solander</i>
		Pilot boarding place trial eastwards
1235/2009	Aus 222-812-813	<i>Clarence River</i>
		Harbour works
1177/2009	Aus 204-217-AU5XX204	<i>Cowan Creek</i>
		Refuge Bay-Raft removed

95(T)/2010 AUSTRALIA - TEMPORARY AND PRELIMINARY NOTICES (continued)

<i>Notice</i>	<i>Charts affected</i>	<i>Locality and Subject</i>
1438/2009	Aus 198-AU5198X9	<i>Georges River</i> Light beacon removed; light buoy established
708/2008	Aus 195-197-806-807-808-809-810-811-812-813-AX0808E-0809E	<i>Green Cape to Ballina Head</i> Scientific instruments
50/2010	Aus 219	<i>Hastings River</i> Bar crossing; light discontinued
48/2010	Aus 193-807-808-AX0808E-60193-67192-70193-AU436150-5XX193	<i>Jervis Bay</i> Scientific instruments
1009/2009	Aus 197-200-201-AX63200-AU5X200E	<i>Manly</i> Scientific instruments
866/2008	Aus 207-208-361-362-809-AX0809E-AU433151-5XX208	<i>Newcastle</i> Obstructions
773/2009	Aus 207-208-AU5XX208	South Arm-Harbour works; dredging operations
1440/2009	Aus 207-208-AU5XX208	Depth information
1036/2008	Aus 197-198-808-AX0808E-AU5198X9	<i>Point Long Nose</i> Offshore works
208/2009	Aus 808-AX0808E-AU435151	<i>Port Hacking</i> Scientific instrument southeastwards
454/2006	Aus 202-AU5X200W	<i>Port Jackson</i> Shoaling
1439/2009	Aus 200-203-AU5X200W	Homebush Bay-Scientific instruments; piles; silt curtain
864/2008	Aus 195-361-808-AX0808E-AU435150-5XX194	<i>Port Kembla</i> Obstructions
1281/2009	Aus 194-AU5XX194	Depth information
658/2009	Aus 209-AU433152	<i>Port Stephens</i> Shoaling
496/2009	Aus 807-808-AX0808E-AU435150	<i>Shoalhaven Bight</i> Unexploded ordnance
NORTHERN TERRITORY		
662/2007	Aus 28	<i>Darwin</i> Depth information
222/2009	Aus 24-AU5XXX24	Light buoy off station
790/2009	Aus 20	<i>Melville Island</i> Cape Gambier-Reef delineation
950/2004	Aus 309-311-315	<i>Troubadour Shoals</i> Scientific instruments
QUEENSLAND		
460/2008	Aus 255	<i>Abbot Point</i> Light buoy established
664/2008	Aus 255-826	Scientific instruments
1044/2008	Aus 255-AU5XX255	Harbour works
1152/2008	Aus 255-AU5XX255	Depth information
819/2008	Aus 252-253-268-AU5268P2	<i>Airlie Beach</i> Light buoys established
1097/2008	Aus 252-253-268-AU5268P2	Wreck
214/2009	Aus 252-253-268-AU5268P2	Wreck
667/2009	Aus 252-253-268-AU5268P2	Abel Point-Wreck
729/2009	Aus 4-701-AU413141	<i>Albatross Bay</i> Scientific instruments
1288/2009	Aus 827-828-AU419146	<i>Allingham</i> Light removed
1187/2009	Aus 365	<i>Arkwright Point</i> Scientific instrument
968/2009	Aus 830-AX6027S-AU417145	<i>Arlington Reef</i> Wreck

95(T)/2010 AUSTRALIA - TEMPORARY AND PRELIMINARY NOTICES (continued)

<i>Notice</i>	<i>Charts affected</i>	<i>Locality and Subject</i>
845/2009	Aus 252-254-AU5254P2	<i>Black Island</i> Light beacon destroyed
1090/2006	Aus 238	<i>Brisbane River</i> Lights altered
830/2007	Aus 238	Cameron Rocks-Light unlit
1132/2007	Aus 237-238	Lytton Reach-Mooring blocks; pipeline
751/2008	Aus 237	Fisherman Islands-Harbour works
810/2008	Aus 237-238-AU5237X8	Depth information
814/2008	Aus 238-AU5237X8	Newstead-Harbour works
1146/2008	Aus 238-AU5237X8	Quarries Reach to Parker Island Reach-Harbour works
1193/2008	Aus 237-AU5237X8	Fisherman Islands-Harbour works
720/2009	Aus 238-AU5237X8	Town Reach-Kangaroo Point-Wreck
1238/2009	Aus 238-AU5237X8	Lytton Reach-Harbour works
1376/2009	Aus 238-AU5237X8	Humbug Reach-Norris Point-Harbour works
1377/2009	Aus 238-AU5237X8	Kangaroo Point-Harbour works
657/2008	Aus 242	<i>Bundaberg</i> Burnett River-Sea Reach-Light beacon destroyed
1128/2009	Aus 242-AU5XX242	Town Reach-Obstruction
56/2010	Aus 242-243-AU5XX242	Depth information
511/2009	Aus 262-263-264-830-AX63262-AU417145-5262X4	<i>Cairns</i> Depth information
620/2009	Aus 235	<i>Caloundra</i> Rock outcrop
114/2008	Aus 826-827	<i>Cape Bowling Green</i> Scientific instrument
1386/2009	Aus 826-827-AU320147	Light buoy off station
1198/2008	Aus 256-827-AU320147	<i>Cape Cleveland</i> Scientific instrument
787/2009	Aus 831-832-AU415145	<i>Cape Flattery</i> Wreck
429/2009	Aus 236-364-814	<i>Cape Moreton</i> Obstruction southeastwards
430/2009	Aus 235-364-365-814	Obstructions
94/2009	Aus 826-827-AU320147	<i>Cape Upstart</i> Wreck northwards
755/2008	Aus 371-372-827-828	<i>Cassady</i> Light beacon destroyed
876/2008	Aus 270-AU5270P6	<i>Cooktown</i> Depth information
1136/2009	Aus 270-AU5270P6	Light buoy repositioned; light buoy established
726/2009	Aus 830-AU417145	<i>Double Island</i> Scientific instrument
721/2009	Aus 245-AU5244X5	<i>Gladstone</i> Scientific instruments
959/2009	Aus 246-819-AU424151	South Channel-Scientific instrument
960/2009	Aus 244-245-AU5244X5	Targinie Channel-Light buoy withdrawn
1188/2009	Aus 245-819-AU424151-5244X5	North Passage Island-Scientific instruments
1283/2009	Aus 244-245-819-AU424151-5244X5	Scientific instruments
1445/2009	Aus 246-AU424151	Boyne Cutting-Light beacon destroyed; light buoy established
1446/2009	Aus 246-AU424151	Golding Cutting-Obstruction
1447/2009	Aus 245-AU5244X5	Curtis Island-Drilling operations
1448/2009	Aus 244-245-246-247-AU424151-5244X5	Scientific instruments
57/2010	Aus 244-245-246	Depth information
836/2009	Aus 230	<i>Gold Coast Seaway</i> Shoaling
837/2009	Aus 230	Shoaling
1099/2008	Aus 828-AU419146	<i>Goold Island</i> Wreck
1444/2009	Aus 240-817	<i>Great Sandy Strait</i> Light buoys established

15 January 2010

95(T)/2010 AUSTRALIA - TEMPORARY AND PRELIMINARY NOTICES (continued)

<i>Notice</i>	<i>Charts affected</i>	<i>Locality and Subject</i>
		<i>Hay Point</i>
964/2009	Aus 249-250-AU5250P2	Depth information
965/2009	Aus 249-250-AU5250P2	Depth information
1243/2009	Aus 249-250-823-AX0249E-0823E-AU422149-5250P2	Scientific instruments
59/2010	Aus 249-823-AX0249E-0823E-AU422149	Anchorage established
		<i>Hay Point to Bailey Islet</i>
60/2010	Aus 249-250-823-824-AX0249E-0823E-AU422149-5250P2	Scientific instruments
		<i>Heron Island</i>
111/2008	Aus 819	Scientific instruments
		<i>Hook Reef</i>
930/2007	Aus 254-825	Beacon destroyed
		<i>Karamea Bank</i>
166/2009	Aus 367-820-AU323151	Wreck
		<i>Karumba</i>
937/2007	Aus 6	Obstruction; buoy
1051/2008	Aus 6	Light beacon withdrawn
512/2009	Aus 6	Depth information
67/2010	Aus 6	Shoaling; light buoys established
		<i>Keppel Bay</i>
900/2009	Aus 247-265-AU424150	Scientific instruments
		<i>Kirra Point</i>
391/2008	Aus 813-814	Offshore works
		<i>Laguna Quays</i>
1052/2006	Aus 252	Reduced depth
		<i>Lisa Jane Shoals</i>
1305/2008	Aus 247-819-820-AU424151	Scientific instrument
		<i>Lizard Island</i>
118/2008	Aus 832	Scientific instruments
		<i>Lucinda</i>
463/2008	Aus 259	Light buoy repositioned
		<i>Mackay</i>
724/2009	Aus 250-AU5250P1	Harbour works
966/2009	Aus 250-AU5250P1	Depth information
		<i>Moreton Bay</i>
102/2007	Aus 235-236	Light sector partially undefined.
694/2007	Aus 235-236	Brisbane River-Depth information and keel clearances
733/2007	Aus 236	Tangalooma Point-Wreck: buoy
774/2007	Aus 236	Scarborough-Shoaling
710/2008	Aus 235-236	Spitfire Channel-Light buoys established
750/2008	Aus 236	Banana Bank-Light beacon damaged
84/2009	Aus 236	Rous Channel-Shoaling
87/2009	Aus 236-AU5237X8	Wynnum-Shoaling
321/2009	Aus 236-AU5237X8	Manly-Light beacon established
377/2009	Aus 235-236	Skirmish Passage-Wreck
380/2009	Aus 236-814	Bramble Bay-Bridge construction
660/2009	Aus 235-236-814	North East Channel-Light buoys off station
661/2009	Aus 236	Redland Bay-Light beacon destroyed
662/2009	Aus 236	Cleveland Point-Light beacon unlit
1117/2009	Aus 236	North Stradbroke Island-Amity-Harbour works
1119/2009	Aus 236-AU5237X8	Manly-Harbour works; dredging operations
1323/2009	Aus 236	Deception Bay-Wreck
1378/2009	Aus 236	Scarborough-Dredging operations
1441/2009	Aus 236-AU428153	Lamb Island-Clarkes Point-Light beacon destroyed; light buoy established
1443/2009	Aus 236-AU428153	Light beacon destroyed; light buoy established
54/2010	Aus 236-AU428153	Scientific instrument southeastwards
		<i>Mourilyan</i>
786/2009	Aus 258-AU5258P1	Depth information

95(T)/2010 AUSTRALIA - TEMPORARY AND PRELIMINARY NOTICES (continued)

<i>Notice</i>	<i>Charts affected</i>	<i>Locality and Subject</i>
1244/2009	Aus 825-826-AU320148	<i>Nares Rock</i> Light unlit
1449/2009	Aus 822-823-AX0822E-0823E-AU322150	<i>Percy Isles</i> Scientific instrument
1244/2006	Aus 268	<i>Pioneer Bay</i> Airlie Beach-Harbour works; light buoys.
663/2008	Aus 252-253-268	Dredging operations
1236/2009	Aus 230-813-814	<i>Point Danger to Point Lookout</i> Scientific instruments
1019/2009	Aus 265-AU5247P1	<i>Port Alma</i> Depth information
117/2008	Aus 270	<i>Port Douglas</i> Depth information
1135/2009	Aus 270-AU5270P1	Light beacon withdrawn; light buoy established
64/2010	Aus 270-AU5270P1	Dredging operations
663/2009	Aus 235	<i>Pumicestone Channel</i> Light buoy off station
170/2009	Aus 829-AU418146	<i>Rocky Point</i> Light beacon withdrawn
665/2009	Aus 426-612	<i>Saumarez Reefs</i> Wreck
1451/2009	Aus 252-253-AU421148	<i>Shute Bay</i> Obstructions
671/2006	Aus 701	<i>Skardon River</i> Shoaling
890/2007	Aus 701	Shoaling
777/2009	Aus 230	<i>Southport</i> Harbour works
329/2009	Aus 252-253-824-AU421149	<i>Surprise Rock</i> Light beacon destroyed
311/2008	Aus 367-426	<i>Swains Reef</i> Scientific instruments
116/2008	Aus 828	<i>Thread Shoal to Myrmidon Reef</i> Scientific instruments
1025/2009	Aus 293-299-AU5XX299	<i>Thursday Island</i> Depth information
1248/2008	Aus 256-257-AU5XX257	<i>Townsville</i> Light buoy
1133/2009	Aus 257-AU5XX257	Ross Creek-Light beacons withdrawn; light buoys established
1453/2009	Aus 257-AU5XX257	Ross River-Dredging operations
62/2010	Aus 257-AU5XX257	Harbour works
63/2010	Aus 256-257-AU5XX257	Depth information
446/2009	Aus 830-AU417145	<i>Upolu Reef</i> Obstructions
1327/2009	Aus 4-AU5XX4P1	<i>Weipa</i> Depth information
66/2010	Aus 4	Obstruction
1387/2009	Aus 262-830-AX6027S-63262-AU417145-5262X4	<i>Yorkeys Knob</i> Light buoy established
SOUTH AUSTRALIA		
830/2008	Aus 130-780-781	<i>Barker Inlet</i> Shoaling
1161/2008	Aus 125	<i>Glenelg</i> Shoaling
458/2009	Aus 125-781	Restricted area; light buoys
456/2009	Aus 130-138-780-781-AU435138-5137X8	<i>Largs Bay</i> Light buoy off station

95(T)/2010 AUSTRALIA - TEMPORARY AND PRELIMINARY NOTICES (continued)

<i>Notice</i>	<i>Charts affected</i>	<i>Locality and Subject</i>
520/2009	Aus 347	<i>Murray River</i> Dredging operations; exclusion zone
1208/2008	Aus 343-AX0343E	<i>Neptune Islands</i> Scientific instrument
1396/2009	Aus 343-345-AX0343E	<i>North Neptunes</i> Scientific instruments
455/2009	Aus 136-444-778	<i>Point Lowly</i> Light unreliable
720/2008	Aus 137	<i>Port Adelaide</i> Shoaling
393/2009	Aus 130-137	Wreck
633/2009	Aus 137-AU5137X8	Depth information <i>Port Augusta</i>
265/2008	Aus 344-778	Light beacon destroyed
415/2008	Aus 344-778	Two Hummock Point-Light beacon altered <i>Port Bonython</i>
1251/2009	Aus 136-778	Light buoy off station <i>Port Stanvac</i>
335/2009	Aus 125-780-781	Scientific instrument
572/2009	Aus 125-780-781	Pipeline
87/2010	Aus 125-780-781	Offshore works <i>Port Willunga</i>
921/2009	Aus 780	Light buoy off station <i>Wallaroo</i>
173/2008	Aus 777	Light beacon destroyed
176/2009	Aus 777	Depth information <i>Whidbey Isles to Kangaroo Island</i>
1082/2009	Aus 342-343-345-346-444-AX0343E- AU336135	Scientific instruments
268/2008	Aus 125	<i>Wirrina Cove</i> Shoaling
TASMAN SEA		
51/2010	Aus 609-AU430167	<i>Norfolk Island</i> Wreck
TASMANIA		
1086/2009	Aus 167-168-AU5167X8	<i>Bell Bay</i> Light beacon destroyed
922/2009	Aus 163	<i>Burnie</i> Depth information
1403/2009	Aus 163-AU5163P1	Lights altered <i>Devonport</i>
979/2009	Aus 164-AU5164P1	Depth information <i>Furneaux Group</i>
922/2005	Aus 179-800	Shoaling <i>Georges Bay</i>
131/2008	Aus 169	Shoaling
91/2010	Aus 169	Wreck <i>Hobart</i>
509/2008	Aus 171-172	Obstructions
522/2009	Aus 172	Depth information <i>Little Oyster Cove</i>
88/2010	Aus 171-173-AU444147	Harbour works; light beacon discontinued <i>Macquarie Harbour</i>
1083/2009	Aus 177-792	Scientific instruments <i>North West Bay</i>
416/2008	Aus 171-173-174	Wreck <i>Port Dalrymple</i>
1142/2009	Aus 167-799-AU442146-5167X8	Scientific instruments

95(T)/2010 AUSTRALIA - TEMPORARY AND PRELIMINARY NOTICES (continued)

<i>Notice</i>	<i>Charts affected</i>	<i>Locality and Subject</i>
833/2008	Aus 171-173-174-795	<i>River Derwent</i> Scientific instruments
684/2009	Aus 171-173-AU444147	Pipeline
795/2009	Aus 171	Hobart-Buoy established <i>River Tamar</i>
1085/2009	Aus 167-799-AU442146-5167X8	Port Dalrymple-Reclamation works
1342/2009	Aus 168-AU5167X8	Dredging operations
92/2010	Aus 168-AU5167X8	Obstruction <i>Southport</i>
574/2009	Aus 173-174-795-AU444146	Harbour works <i>Spring Bay</i>
460/2009	Aus 175	Depth information <i>Storm Bay</i>
274/2009	Aus 795-796	Scientific instruments
1341/2009	Aus 795-796-AU444147	Scientific instruments
TIMOR SEA		
69/2010	Aus 308-309-310-311-312-313-314-315-316-317-318-321-322-442-721-725-4720-4721-4722-AX0309F-0310F-0311F-0312F-0313F-0314F-0315F-0317F-0321F-0322F-4720F-4721F-4722F-72309-AU130120-310127-310128-310130-311125-311126-311127-311128-311130-311131-311132-312122-312123-312124-312125-312126-312127-312128-313121-313123-313124-313125-313126-313127-313128-314124-314125-314127-314128-411129-412129-413129-414126	Seismic survey
982/2008	Aus 314-319-4721-4722-AU313124	Drilling operations <i>Sahul Banks</i>
476/2006	Aus 312	Scientific instruments
223/2009	Aus 312-4721-AX0312F-4721F-AU311126	Navaid; racon non operational
TORRES STRAIT		
65/2010	Aus 293-299-AU311142-5XX299	<i>Madge Reef</i> Light beacon unlit
1137/2009	Aus 376-377-840-AX60377-AU410143	<i>Stephens Islet</i> Wreck northwards
VICTORIA		
1300/2009	Aus 801-AU439145	<i>Anderson Inlet</i> Shoaling
1301/2009	Aus 181-182-AU439146	<i>Barry Beach</i> Shoaling
1467/2009	Aus 143-AU439144	<i>Barwon River</i> Lights trial
1468/2009	Aus 143-788-AU439144	Bridge construction; exclusion zones; light buoys established <i>Corner Inlet</i>
1213/2008	Aus 181-357A-802-AU439146	Shoaling <i>Lakes Entrance</i>
741/2009	Aus 182	Harbour works <i>Ninety Mile Beach</i>
458/2007	Aus 357a	Obstructions <i>Port Albert</i>
800/2009	Aus 181-182-AU439146	Shoaling
1303/2009	Aus 181-182-AU439146	Harbour works

95(T)/2010 AUSTRALIA - TEMPORARY AND PRELIMINARY NOTICES (continued)

<i>Notice</i>	<i>Charts affected</i>	<i>Locality and Subject</i>
897/2007	Aus 154	<i>Port Melbourne</i> Shoaling
1344/2009	Aus 154-155-AU5XX154	Port Phillip-Dredging operations <i>Port Phillip</i>
796/2007	Aus 143-158	South channel-Obstruction
797/2007	Aus 143-158	South Channel-Obstruction
997/2007	Aus 154	Station Pier-Shoaling
223/2008	Aus 143-154-155	Port Melbourne-Princes Pier-Harbour works
893/2008	Aus 154-AU5XX154	River Yarra-Light beacon withdrawn
115/2009	Aus 157-AU439144	Clifton Springs-Harbour works
230/2009	Aus 154-AU5XX154	Port Melbourne-Depth information
465/2009	Aus 153-157-AU5XX153	Geelong-Depth information
582/2009	Aus 153-157-AU5XX153	Corio Quay-Harbour works
926/2009	Aus 154-AU5XX154	Port Melbourne-Swanson Dock-Harbour works
1036/2009	Aus 154-AU5XX154	River Yarra-Harbour works
1037/2009	Aus 154-AU5XX154	River Yarra-Harbour works
1089/2009	Aus 154-155-AU438144-5XX154	Williamstown-Harbour works
1252/2009	Aus 154-AU5XX154	River Yarra-South Wharf-Harbour works
1405/2009	Aus 143-157-AU439144	Point Richards-Harbour works
1469/2009	Aus 154-AU5XX154	Port Melbourne-River Yarra-Harbour works <i>Port Welshpool</i>
1302/2009	Aus 181-AU439146	Middle Ground Channel-Beacon destroyed <i>Warrnambool</i>
1401/2009	Aus 349	Pipeline southeastwards <i>Western Port</i>
514/2008	Aus 150-151	Shoaling northwards
1346/2009	Aus 150-801-AU439145	Wonthaggi-Scientific instrument
WESTERN AUSTRALIA		
<i>Albany</i>		
729/2006	Aus 109	Light beacon; light buoy <i>Alkimos Reef</i>
1337/2009	Aus 334-754-AX0334E-0754E-66002-AU432115	Scientific instrument
82/2010	Aus 334-754-AX0334E-0754E-66002-AU432115	Harbour works; exclusion zone
<i>Barrow Island</i>		
75/2010	Aus 62-742-AU421115	Harbour works; exclusion zone
76/2010	Aus 62-742-743-AU421115	Scientific instruments <i>Bessieres Island</i>
1464/2009	Aus 328-415-416-744-4708-AX0415F-4708F-AU130090-422114	FPSO off station northwestwards
<i>Binningup</i>		
85/2010	Aus 115-334-335-755-AX0334E-0755E-AU434115	Offshore works; exclusion zone
<i>Broome</i>		
893/2007	Aus 50	Wreck
849/2009	Aus 50-324	Gantheaume Bay-Obstruction , light buoy
1079/2009	Aus 50-51-324-AU418122	Electronic navigation aid trial <i>Browse Island</i>
100/2009	Aus 319-AX0319F-AU314123	Scientific instrument northwestwards
1459/2009	Aus 319-AX0319F-AU314123	Scientific instruments
1460/2009	Aus 319-320-AX0319F-AU314123	Scientific instrument

95(T)/2010 AUSTRALIA - TEMPORARY AND PRELIMINARY NOTICES (continued)

<i>Notice</i>	<i>Charts affected</i>	<i>Locality and Subject</i>
1034/2007	Aus 57-58-59	<i>Dampier</i> Depth information
218/2008	Aus 57-58-59	Anchorage
259/2008	Aus 58-59	Light buoy established
260/2008	Aus 57-58-59	Dredging operations; exclusion zone
911/2009	Aus 57-58-741	Obstruction
1197/2009	Aus 57-58-59-AU5XXX58	Rock dumping
1248/2009	Aus 57-58-59-AU5XXX58	Light beacons to be established
72/2010	Aus 57-58-741-AU5XXX58	Light buoy damaged
73/2010	Aus 57-58-59-AU5XXX58	Dredging operations
523/2004	Aus 327-415	<i>Dampier Archipelago</i> Scientific instruments northwestwards
764/2008	Aus 110-118-759	<i>Emu Point</i> Light
779/2006	Aus 119	<i>Esperance</i> Scientific instrument
616/2008	Aus 119	Depth information
1158/2008	Aus 119-762	Scientific instrument to be established
976/2009	Aus 119-AU5119P1	Light beacon destroyed
1296/2009	Aus 329-415-416-4708-AX0415F-4708F-AU130090	<i>Exmouth Plateau</i> Obstruction
470/2008	Aus 112-113-AX63112	<i>Fremantle</i> Obstruction; submarine pipeline; light buoys
273/2009	Aus 112-754-AX0754E-63112-66002	Anchorage
793/2009	Aus 113-AU5XX113	Depth information
1393/2009	Aus 112-113-114-117-AX63112-70117-AU5111X4-5XX113	Navais altered
83/2010	Aus 112-113-AX63112-AU5XX113	Harbour works
518/2009	Aus 334-335-755-756-AX0334E-0755E-AU434115	<i>Geographe Bay</i> Scientific instrument
946/2008	Aus 81	<i>Geraldton</i> Depth information
451/2009	Aus 81-751	Light buoy off station
570/2009	Aus 81	Light buoy withdrawn
1255/2008	Aus 327	<i>Glomar Shoal</i> Scientific instruments northwards
333/2009	Aus 109-110-118-AU5XX109	<i>King George Sound</i> Scientific instruments
453/2009	Aus 114-117-AX70117-AU5111X4	<i>Kwinana</i> Light unlit
674/2009	Aus 323-324	<i>Lacepede Channel to Cape Boileau</i> Scientific instruments
71/2010	Aus 323-324-AU418122	Scientific instruments
1392/2009	Aus 328-329-744-AU422114	<i>Muiron Islands</i> Light buoy established northwestwards
1329/2009	Aus 327-415-741-4722-AX0415F-4722F-AU130090	<i>North Rankin</i> Scientific instruments
914/2009	Aus 64-328-329-415-416-743-744-AX0415F-AU321114-422114	<i>North West Cape</i> Scientific instruments
1335/2009	Aus 328-329-415-416-744-4708-AX0415F-4708F-AU130090-422114	Scientific instruments northwestwards
792/2009	Aus 334-754-AX0334E-0754E-0755E-66002-AU332114-432115-433115	<i>Perth</i> Scientific instruments westwards

95(T)/2010 AUSTRALIA - TEMPORARY AND PRELIMINARY NOTICES (continued)

<i>Notice</i>	<i>Charts affected</i>	<i>Locality and Subject</i>
827/2008	Aus 54	<i>Port Hedland</i> Lights established
1254/2008	Aus 52-53-54-739-740	Scientific instruments
331/2009	Aus 52-53-54	Harbour works
332/2009	Aus 52-53-54	Dredging operations
677/2009	Aus 54-AU5XXX54	Light established
1080/2009	Aus 52-54-AU5XXX52	Depth information <i>Rankin Bank</i>
679/2009	Aus 328-AU320115	Scientific instruments <i>Rankin Bank to Dampier</i>
1293/2009	Aus 57-58-59-327-328-741-742- AU421115-421116-5XXX58	Scientific instruments
1330/2009	Aus 57-58-59-327-328-415-416-741- 742-AX0415F-AU320115-421115- 421116	Production wells; platform; pipeline established
1157/2008	Aus 334-754-AX0334E-0754E-66002- AU432115	<i>Rottnest Island</i> Scientific instrument to be established
1462/2009	Aus 322-323-324-415-AX0322F- 0415F-AU315121-318121	<i>Scott Reef to James Price Point</i> Scientific instruments
77/2010	Aus 64-328-743-744-AU422114- 422115	<i>Thevenard Island to Ashburton Road</i> Scientific instruments
79/2010	Aus 63-64-328-415-416-742-743- AX0415F-AU321114-422115	<i>Thevenard Island to Exmouth Plateau</i> Scientific instruments
1052/2008	Aus 40-732-733	<i>Yampi Sound</i> Comber Rock-Buoy off station
1147/2009		MISCELLANEOUS Summer time
727/2006	Aus 901	EAST TIMOR <i>Dili</i> Light unlit
309/2005	Aus 311-312-313-4721	<i>Pulau Jaco</i> Light unlit
1135/2006	Aus 4071	INDIAN OCEAN Scientific instruments
800/2005	Aus 607	Light beacon <i>Sumatera</i>
1458/2009	Aus 4070-4071	Scientific instruments westwards
1471/2009	Aus 399-4622-AU306156	PACIFIC OCEAN Scientific instruments
609/2008	Aus 399-683-4622	PAPUA NEW GUINEA <i>Bougainville Island</i> Lights unlit
406/2008	Aus 547-4622	<i>Kimbe Island</i> Light unlit
121/2008	Aus 523	<i>Lae</i> Wreck
355/2008	Aus 523	Light buoy established <i>Madang</i>
967/2005	Aus 646	Horizontal datum anomaly <i>Port Moresby</i>
404/2008	Aus 379-505-4620	Fish aggregation device southwards <i>Rantan Island</i>
1102/2008	Aus 399-AU407155	Light unlit

15 January 2010

HYDROGRAPHIC REPORTS

<i>Locality</i>	<i>Report</i>	<i>Ship/Authority</i>	<i>Observer</i>
AANTM- Notice 22	Error		R McManamon
QLD- Mabuiag Island	Rock		R Priest
TAS- Little Oyster Cove	Harbour works	SV <i>Windclimber</i>	D Davey

NAVIGATION WARNINGS

The following radio messages have been received during the period to 15 January 2010. Signal copies of these messages may be destroyed. It is recommended that the reprint of Navigational Warnings should be kept in a file or a book divided into areas. Cancellation should be made on receipt of signals and reprints.

Rigs on location other than those listed in the latest Section III summary are the subject of Radio Navigational Warnings. Rigs in transit will not be the subject of Warnings.

AUSCOAST WARNING**2009**

- 303 Cancelled.
 304 Drill rig *Nan Hai 6* in position 21° 26'.23 S 114° 02'.48 E. 2.5M clearance requested.
 305 Cancelled.
 306 Drill rig *Ocean Patriot* in position 38° 09'.71 S 148° 12'.97 E. 2.5M clearance requested.
 307 Special purpose vessel *Geo Atlantic* conducting operations in area bounded by 11° 33'.00 S to 12° 55'.00 S and 127° 00'.00 E to 128° 00'.00 E. 6M clearance requested.
 308 Cancelled.
 309 Cancelled.
 310 Special purpose vessel *Geowave Voyager* conducting seismic survey towing 4M cable in area bounded by 11° 49'.0 S to 14° 21'.0 S and 121° 04'.0 E to 123° 44'.0 E. 6M clearance requested.
 311 Drill rig *Ensco 7500* in position 19° 33'.00 S 114° 07'.80 E. 2.5M clearance requested.
 312 Drill rig *Atwood Eagle* in position 19° 50'.76 S 115° 19'.70 E. 2.5M clearance requested.
 313 Drill rig *Songa Venus* in position 13° 51'.70 S 124° 05'.80 E. 2.5M clearance requested.
 314 Drill rig *Stena Clyde* in position 20° 05'.30 S 115° 09'.70 E. 2.5M clearance requested.

2010

- 001 Cancelled.
 002 Cancelled.
 003 Cancelled.
 004 Thirteen five shoal buoy (13° 46'.04 S 144° 09'.50 E) topmark missing.
 005 Cancelled.
 006 Limited coast radio stations Cairns and Gladstone (areas A and B) temporarily discontinued from 110300UTC. Navigation warnings and sea safety messages will be broadcast by RCC Australia on 8291 khz.
 007 Pluto LNG platform construction in position 19° 59'.78 S 115° 22'.09 E. 2.5M clearance requested.
 008 Underwater cables and unlit buoys located within an area bounded by 20° 00'.6 S to 20° 01'.4 S and 115° 23'.2 E to 115° 23'.7 E. 5M clearance requested.
 009 Cancelled.

NAVAREA X WARNINGS

- 001 Special purpose vessel *Beaufort Explorer* conducting seismic survey in area bounded by 9° 11'.8 S to 14° 18'.4 S and 126° 35'.9 E to 129° 39'.6 E. 5M clearance requested.

Navigational warnings in force as at 150001UTC JAN 10.**Auscoast**

2009 128 191 246 280 289 290 293 297 304 306 307 310 311 312 313 314

2010 004 006 007 008

Navarea X

001

Summary of mobile drilling rigs as at 150001UTC JAN 10.

<i>Name</i>	<i>Position</i>
Kan Tan IV	39° 47'.34 S 145° 26'.21 E
Ocean Shield	11° 05'.90 S 127° 03'.70 E
Songa Venus	13° 51'.70 S 124° 05'.80 E
Transocean Legend	13° 40'.07 S 122° 16'.32 E
Ensco 7500	19° 33'.00 S 114° 07'.80 E
Atwood Eagle	19° 50'.76 S 115° 19'.70 E
Songa Mercur	19° 55'.70 S 115° 14'.90 E
Stena Clyde	20° 05'.30 S 115° 09'.70 E
Nan Hai 6	21° 26'.23 S 114° 02'.48 E
Ocean Epoch	21° 31'.80 S 114° 05'.08 E
Ocean Patriot	38° 09'.71 S 148° 12'.97 E

NAVAREA XIV WARNINGS

003 South Pacific Ocean Iles de la Societe and Line Islands (Kiribati). Cable laying operations in progress by vessel Ile de Re along line joining 17° 28'·2 S 149° 26'·0 W and 01° 45'·8 S 153° 48'·7 W. Wide berth requested.

Navarea XIV warnings in force as at 150001UTC JAN 10.

2009 059

2010 003

To accompany Australian Notice to Mariners 35/2010

HISTORIC WRECK

The site of an historic wreck is protected from unauthorised interference. For details see Australian Seafarers Handbook AHP 20.

Note for chart Aus 55.

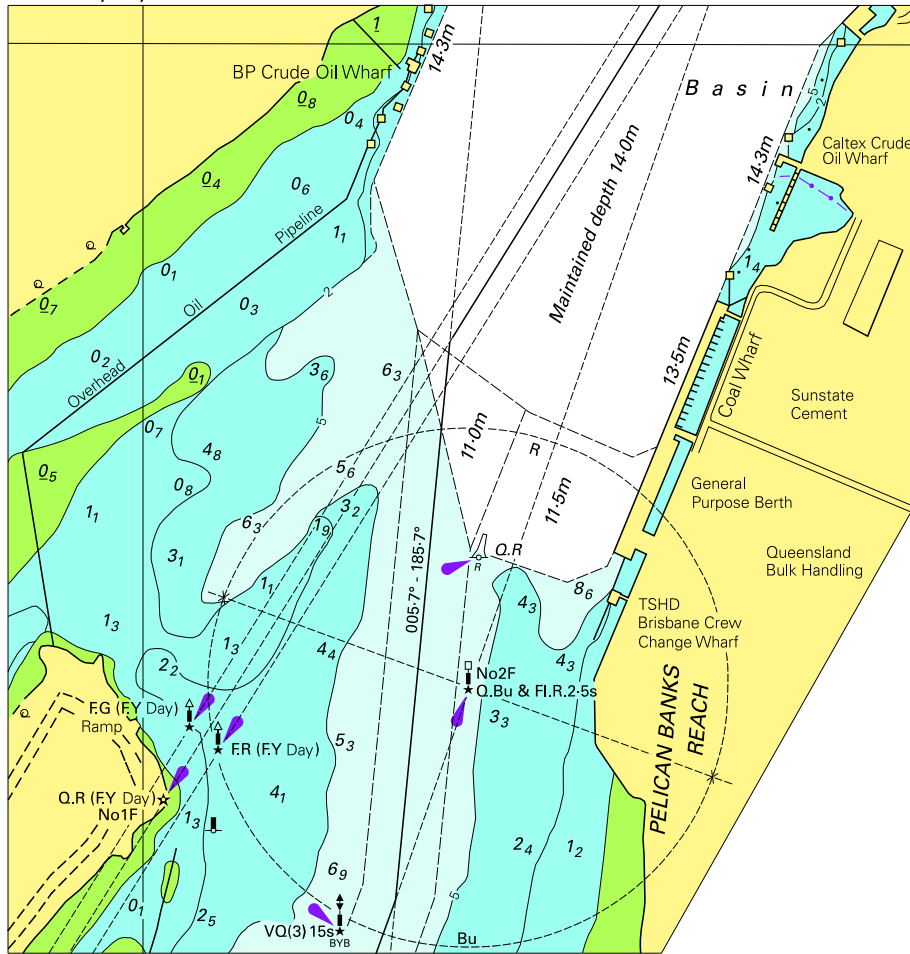
To accompany Australian Notice to Mariners 35/2010

HISTORIC WRECK

The site of an historic wreck is protected from unauthorised interference. For details see Australian Seafarers Handbook AHP 20.

Note for chart Aus 56.

To accompany Australian Notice to Mariners 30/2010

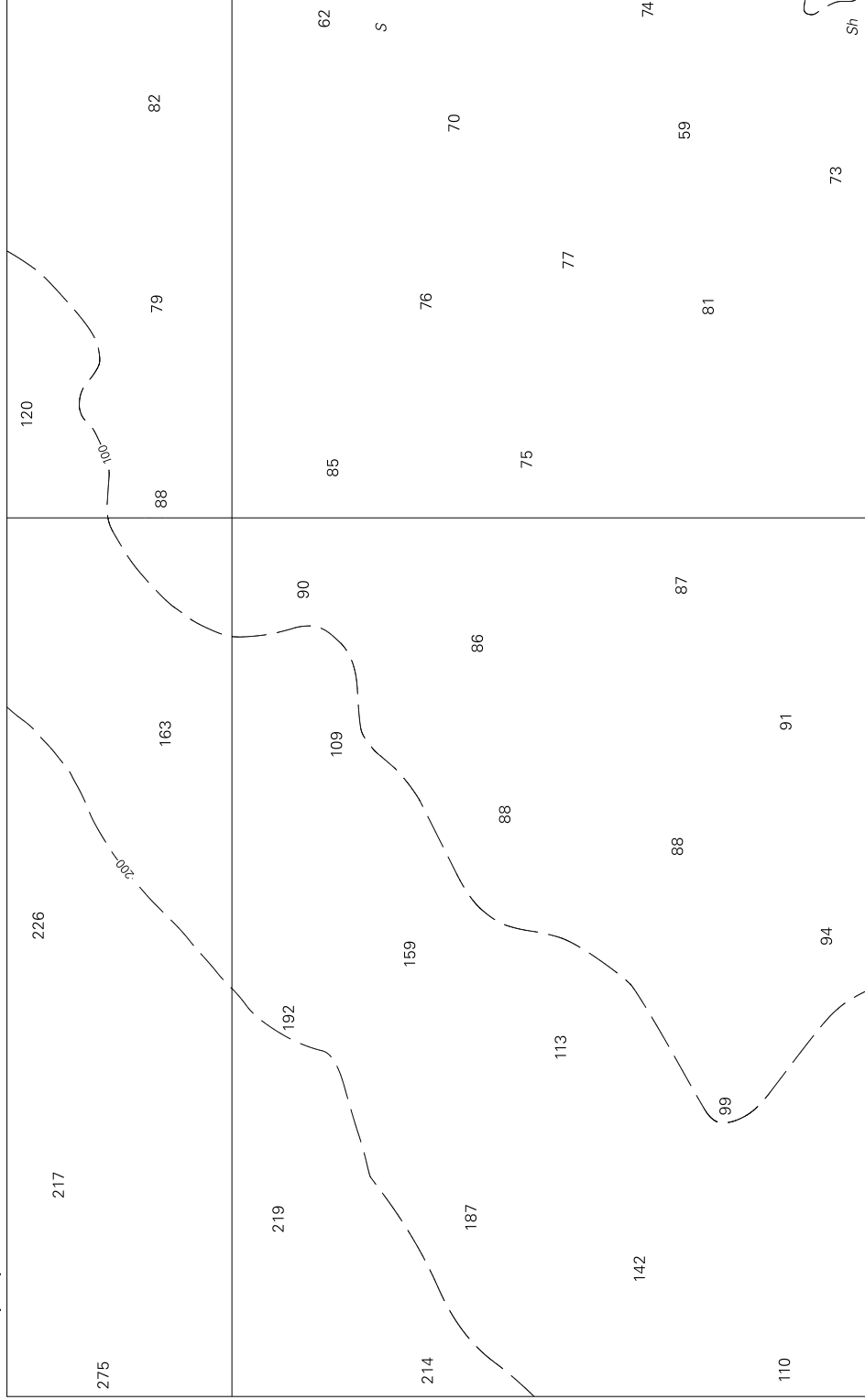


Block for chart Aus 237

© Commonwealth of Australia 2010

(120.8 x 125.3mm)

To accompany Australian Notice to Mariners 33/2010



Block A for chart Aus 323

© Commonwealth of Australia 2010

(202 x 124-7mm)

To accompany Australian Notice to Mariners 33/2010

101	103	89	82	55
111	96	88	75	
100	90	88	77	
94	90			83
88	85	85	85	
	84	85	66	76
89	85	75	84	
	82			
76	80			63
	79	78	75	
85			58	
76	75	63	68	73
	59	(49)		
		74		

Block B for chart Aus 323

© Commonwealth of Australia 2010

(202 x 125-3mm)