



24 September 2010

Edition 19

Australian Notices to Mariners are the authority for correcting Australian Charts and Publications

---

# AUSTRALIAN NOTICES TO MARINERS

Notices 985 – 1038 

Published fortnightly by the Australian Hydrographic Service

Commodore R. NAIRN RAN  
*Hydrographer of Australia*

---

## SECTIONS.

- I. **Australian Notices to Mariners, including blocks and notes.**
- II. **Hydrographic Reports.**
- III. **Navigational Warnings.**

## SUPPLEMENTS.

- I. **Tracings**
- II. **Cumulative List of Australian Notices to Mariners.**
- III. **Temporary and Preliminary Notices in force.**
- IV. **Amendments to Admiralty List of Lights and Fog Signals (Vol K),  
Radio Signals (NP 281(2), 282, 283(2), 285, 286(4)) and Sailing  
Directions (NP 9, 13, 14, 15, 33, 34, 35, 36, 39, 44, 51, 60, 61, 62, 100, 136).**

---

© Commonwealth of Australia 2010

This work is copyright. Apart from any use permitted under the Copyright Act 1968, no part may be reproduced by any process, adapted, communicated or commercially exploited without prior written permission from The Commonwealth represented by the Australian Hydrographic Service.

## IMPORTANT NOTICE

This edition of Notices to Mariners includes all significant information affecting AHS products which the AHS has become aware of since the last edition. All reasonable efforts have been made to ensure the accuracy and completeness of the information, including third party information, on which these updates are based. The AHS regards third parties from which it receives information as reliable, however the AHS cannot verify all such information and errors may therefore exist. The AHS does not accept liability for errors in third party information.

---

## GENERAL INSTRUCTIONS

The substance of these notices should be inserted on the charts affected.

Bearings are referred to the true compass and are reckoned clockwise from North; those relating to lights are given as seen by an observer from seaward. Positions quoted in permanent notices relate to the horizontal datum for the chart(s). When preliminary or temporary notices affect multiple charts, positions will be provided in relation to only one horizontal datum and that datum will be specified. When the multiple charts do not have a common horizontal datum, mariners will be required to adjust the position(s) for those charts not on the specified datum. The range quoted for a light is its nominal range. Depths are with reference to the chart datum of each chart. Heights are above mean high water springs or mean higher high water, as appropriate.

The capital letter (P) or (T) after the number of any notice denotes a preliminary or temporary notice respectively, which are contained separately at the end of the permanent notices. A star (\*) adjacent to the number of a notice indicates that the notice is based on original information.

---

## REPORTING OF DANGERS

Mariners are particularly requested to notify the AUSTRALIAN HYDROGRAPHIC SERVICE, Locked Bag 8801 Wollongong, NSW 2500 (Fax 02-4223 6599, e-mail [Hydro.NTM@defence.gov.au](mailto:Hydro.NTM@defence.gov.au) or, alternatively by filling in and submitting the [Hydrographic Notes](#) forms located on the web site – [www.hydro.gov.au](http://www.hydro.gov.au)), immediately on the discovery of new dangers or suspected dangers to navigation. For changes or defects in aids to navigation notify AusSAR (Fax 02-6230 6868 or email [rccaus@amsa.gov.au](mailto:rccaus@amsa.gov.au)).

---

## AUTHORISED USE

Copies of Australian notices are available free of charge from the Australian Hydrographic Service (AHS) website ([www.hydro.gov.au](http://www.hydro.gov.au)) and through the eNotices (email) service ([www.hydro.gov.au/enotices/enotices.htm](http://www.hydro.gov.au/enotices/enotices.htm)).

Individual Notices may be copied for the purpose of inserting Notice substance on official charts and publications. Paper copies may be printed by chart agents and distributed to customers on a cost recovery basis. Participating chart agents are listed on the AHS website as providing a 'Paper Notices to Mariners' service ([www.hydro.gov.au/prodserv/distributors/distributors.htm](http://www.hydro.gov.au/prodserv/distributors/distributors.htm)). Copies of the notices may not be sold for profit without prior written agreement.

## NUMERICAL INDEX OF NOTICES TO MARINERS

### Edition No 19

Notices	Aus Chart, INT Chart, ENC Cell
985.....	Aus 325, 329, 349, 414, 415, 416, 417, 422, 423, 668, 4643, 4644, 4723, 4725, AU220110, 230100, 230110, 240110, 317118, 317119, 317120, 318119, 318120, 318150, 318151, 319120, 412136, 413136, 418139, 418140, 420120
986.....	Aus 191, 808, AX 0808E
987.....	Aus 202
988.....	Aus 235, 236
989.....	Aus 237, 238
990.....	Aus 241
991.....	Aus 4621, INT 621, AX 4621F
992.....	Aus 508, 509, 513, 518, 628
993.....	Aus 547
994.....	Aus 716
995.....	Aus 4722, INT 722, AX 4722F
996.....	Aus 323
997.....	Aus 334, 754, AX 0334E, 0754E, 66002
998.....	Aus 116
999.....	Aus 4726, INT 726
1000.....	Aus 122
1001.....	Aus 139
1002.....	Aus 167, 168
1003.....	Aus 164
1004.....	Aus 157
1005.....	Aus 357A, 487
1006(T).....	Aus 807, 808, AX 0808E, AU435150
1007(T).....	Aus 236, 364, 814
1008(T).....	Aus 814, AU428153
1009(T).....	Aus 235, 236, 237, 238, AU427153, 428153, 5237X8
1010(T).....	Aus 236, AU5237X8
1011(T).....	Aus 236, 237, AU428153, 5237X8
1012(T).....	Aus 236, 237, AU428153, 5237X8
1013(T).....	Aus 237, AU5237X8
1014(T).....	Aus 237, 238
1015(T).....	Aus 365
1016(T).....	Aus 244, 245, AU5244X5
1017(T).....	Aus 245, 819, AU424151, 5244X5
1018(T).....	Aus 245, 819, AU424151, 5244X5
1019(T).....	Aus 260, 367, 822, AX 0260E, 0367E, 0822E, 60260, AU423150
1020(T).....	Aus 249, 823, AX 0249E, 0823E, AU422149
1021(T).....	Aus 250, AU5250P2
1022(T).....	Aus 258, 829, AU418146
1023(T).....	Aus 262, 263, AX 63262, AU5262X4
1024(T).....	Aus 262, 830, AX 6027S, 63262, AU417145, 5262X4
1025(T).....	Aus830, AX 6027S, AU417145
1026(T).....	Aus 270, AU5270P1
1027(T).....	Aus 309, 311, 315, AX 0309F, 0311F, 0315F, 72309, AU312127, 312128, 313127, 313128
1028(T).....	Aus 319, AX 0319F, AU314123
1029(T).....	Aus 324, AU418122
1030(T).....	Aus 327, 741, 742, AU421116
1031(T).....	Aus 329, 745, AU323113
1032(T).....	Aus 788, AU433137
1033(T).....	Aus 143, AU439144
1034(T).....	Aus 143, AU439144
1035(T).....	Aus 143, 158
1036(T).....	Aus 154, 155, AU438144
1037(T).....	Aus 143, 158, AU5143P3
1038(T).....	Summer time

## NUMERICAL INDEX OF CHARTS AFFECTED

## Edition No 19

Aus Chart	Notices	Aus Chart	Notices
Aus 116.....	998	Aus 668 .....	985
Aus 122.....	1000	Aus 716 .....	994
Aus 139.....	1001	Aus 741 .....	1030(T)
Aus 143.....	1033(T), 1034(T), 1035(T), 1037(T)	Aus 742 .....	1030(T)
Aus 154.....	1036(T)	Aus 745 .....	1031(T)
Aus 155.....	1036(T)	Aus 754 .....	997
Aus 157.....	1004	Aus 778 .....	1032(T)
Aus 158.....	1035(T), 1037(T)	Aus 807 .....	1006(T)
Aus 164.....	1003	Aus 808 .....	986, 1006(T)
Aus 167.....	1002	Aus 814 .....	1007(T), 1008(T)
Aus 168.....	1002	Aus 819 .....	1017(T), 1018(T)
Aus 191.....	986	Aus 822 .....	1019(T)
Aus 202.....	987	Aus 823 .....	1020(T)
Aus 235.....	988, 1009(T)	Aus 829 .....	1022(T)
Aus 236.....	988, 1007(T), 1009(T), 1010(T), 1011(T), 1012(T)	Aus 830 .....	1024(T), 1025(T)
Aus 237.....	989, 1009(T), 1011(T), 1012(T), 1013(T), 1014(T)	Aus 4621 .....	991
Aus 238.....	989, 1009(T), 1014(T)	Aus 4643 .....	985
Aus 241.....	990	Aus 4644 .....	985
Aus 244.....	1016(T)	Aus 4722 .....	995
Aus 245.....	1016(T), 1017(T), 1018(T)	Aus 4723 .....	985
Aus 249.....	1020(T)	Aus 4725 .....	985
Aus 250.....	1021(T)	Aus 4726 .....	999
Aus 258.....	1022(T)	AX 0249E .....	1020(T)
Aus 260.....	1019(T)	AX 0260E .....	1019(T)
Aus 262.....	1023(T), 1024(T)	AX 0309F.....	1027(T)
Aus 263.....	1023(T)	AX 0311F.....	1027(T)
Aus 270.....	1026(T)	AX 0315F.....	1027(T)
Aus 309.....	1027(T)	AX 0319F.....	1028(T)
Aus 311.....	1027(T)	AX 0334E .....	997
Aus 315.....	1027(T)	AX 0367E .....	1019(T)
Aus 319.....	1028(T)	AX 0754E .....	997
Aus 323.....	996	AX 0808E .....	986, 1006(T)
Aus 324.....	1029(T)	AX 0822E .....	1019(T)
Aus 325.....	985	AX 0823E .....	1020(T)
Aus 327.....	1030(T)	AX 4621F.....	991
Aus 329.....	985, 1031(T)	AX 4722F.....	995
Aus 334.....	997	AX 60260.....	1019(T)
Aus 349.....	985	AX 6027S .....	1024(T), 1025(T)
Aus 357A .....	1005	AX 63262.....	1023(T), 1024(T)
Aus 364.....	1007(T)	AX 66002.....	997
Aus 365.....	1015(T)	AX 72309.....	1027(T)
Aus 367.....	1019(T)		
Aus 414.....	985		
Aus 415.....	985	INT Chart	Notices
Aus 416.....	985	INT 621 .....	991
Aus 417.....	985	INT 643 .....	985
Aus 422.....	985	INT 644 .....	985
Aus 423.....	985	INT 722 .....	995
Aus 487.....	1005	INT 723 .....	985
Aus 508.....	992	INT 725 .....	985
Aus 509.....	992	INT 726 .....	999
Aus 513.....	992		
Aus 518.....	992		
Aus 547.....	993		
Aus 628.....	992		

ENC Cell	Notices
AU220110 .....	985
AU230100 .....	985
AU230110 .....	985
AU2340110 .....	985
AU312127 .....	1027(T)
AU312128 .....	1027(T)
AU313127 .....	1027(T)
AU313128 .....	1027(T)
AU314123 .....	1028(T)
AU317118 .....	985
AU317119 .....	985
AU317120 .....	985
AU318119 .....	985
AU318120 .....	985
AU318150 .....	985
AU318151 .....	985
AU319120 .....	985
AU323113 .....	1031(T)
AU412136 .....	985
AU413136 .....	985
AU417145 .....	1024(T), 1025(T)
AU418122 .....	1029(T)
AU418139 .....	985
AU418140 .....	985
AU418146 .....	1022(T)
AU420120 .....	985
AU421116 .....	1030(T)
AU422149 .....	1020(T)
AU423150 .....	1019(T)
AU424151 .....	1017(T), 1018(T)
AU427153 .....	1009(T)
AU428153 .....	1008(T), 1009(T), 1011(T), 1012(T)
AU433137 .....	1032(T)
AU435150 .....	1006(T)
AU438144 .....	1036(T)
AU439144 .....	1033(T), 1034(T)
AU5143P3 .....	1037(T)
AU5237X8 .....	1009(T), 1010(T), 1011(T), 1012(T), 1013(T)
AU5244X5 .....	1016(T), 1017(T), 1018(T)
AU5250P2 .....	1021(T)
AU5262X4 .....	1023(T), 1024(T)
AU5270P1 .....	1026(T)

**985 AUSTRALIA - Product**

Australian Hydrographic Service (AA486596, AA484936, AA482276, AA494884, AA495923)

**New Chart**

<i>Chart</i>	<i>Published</i>	<i>Title and description of amendments</i>	<i>Scale</i>	<i>Index Chart</i>	<i>Price</i>
Aus 325	13/8/2010	Australia - North West Coast - Western Australia - Rowley Shoals to Bedout Islet 16° 51'·0 S - 20° 05'·0 S 118° 46'·0 E - 120° 45'·0 E <i>New metric chart referred to WGS84 datum and LAT; updated for latest surveys and maritime boundaries.</i>	1:300 000	Aus 5000	\$35.00
Aus 329	30/7/2010	Australia - West Coast - Western Australia - North West Cape to Point Cloates 20° 01'·50 S - 22° 57'·50 S 112° 27'·0 E - 114° 26'·0 E <i>New metric chart referred to WGS84 datum and LAT; updated for latest surveys and maritime boundaries.</i>	1:300 000	Aus 5000 and 5001	\$35.00
Aus 349	30/7/2010	Australia - South Coast - Victoria - Cape Nelson to Port Phillip 38° 14'·5 S - 39° 47'·00 S 141° 21'·5 E - 114° 44'·5 E <i>New metric chart referred to WGS84 datum and LAT; updated for latest surveys and maritime boundaries.</i>	1:300 000	Aus 5001	\$35.00
Aus 4723 (INT 723)	27/8/2010	Australia - North West Coast - Java to North West Cape 7° 04'·0 S - 22° 40'·0 S 107° 58'·0 E - 117° 32'·0 E <i>New chart, part of 1.5M international chart series.</i>	1:1 500 000	Aus 5000 and 5001	\$35.00
Aus 4725 (INT 725)	27/8/2010	Australia - North West Cape to Cape Leeuwin 20° 30'·0 S - 35° 00'·0 S 106° 28'·0 E - 116° 02'·0 E <i>New chart, part of 1.5M international chart series.</i>	1:1 500 000	Aus 5000 and 5001	\$35.00

**New Electronic Navigation Chart (Seafarer ENC)**

<i>Cell Name</i>	<i>Released</i>	<i>Title</i>
AU220110	September 2010	Australia - Indonesia - Glomar Shoal to Lombok Basin
AU230100	September 2010	Australia - Indian Ocean (South)
AU230110	September 2010	Australia - Port Hedland to Geraldton
AU240110	September 2010	Australia - Jurien Bay to Albany
AU317118	September 2010	Indian Ocean - Cell 32
AU317119	September 2010	Indian Ocean -Cell 5
AU317120	September 2010	Indian Ocean -Cell 4
AU318119	September 2010	Indian Ocean - Mermaid Reef and Clerke Reef
AU318120	September 2010	Indian Ocean - Cell 7
AU318150	September 2010	Coral Sea - Diamond Islets
AU318151	September 2010	Coral Sea - Diamond Passage including Lihou Reef
AU319120	September 2010	Indian Ocean - Cell 9
AU412136	September 2010	Arafura Sea - Wessel Islands
AU413136	September 2010	Northern Territory - Cape Grey to Gove
AU418139	September 2010	Queensland - Approaches to Albert River
AU418140	September 2010	Queensland - Approaches to Karumba
AU420120	September 2010	Western Australia - Planaires Banks

**New Chart to be published shortly**

<i>Chart</i>	<i>Title</i>	<i>Scale</i>	<i>Expected Publication Date</i>	<i>Expected Stock Availability</i>
Aus 668	Papua New Guinea - New Ireland - North Coast - Plans in Papua New Guinea (Sheet 9) Plan: Sperber Point to Cape St George Nabuto Bay	1:50 000	24 September 2010	1 November 2010
Aus 4643 (INT 643)	Australia - East Coast - Cape Howe to Cape Moreton	1:25 000	24 September 2010	1 November 2010
Aus 4644 (INT 644)	Southern Ocean - Cape Otway to Cape Howe including Tasmania	1:1 500 000	24 September 2010	1 November 2010

**Chart permanently withdrawn**

<i>Chart</i>	<i>On publication of new edition</i>
Aus 325	Aus 325
Aus 329	Aus 329
Aus 349	Aus 349

**Chart permanently withdrawn without replacement**

<i>Chart</i>	<i>On publication of new chart</i>
Aus 414	Aus 4723
Aus 415	Aus 4723
Aus 416	Aus 4725
Aus 417	Aus 4725

**Chart to be permanently withdrawn**

<i>Chart</i>	<i>On publication of new edition</i>
Aus 668	Aus 668

**Chart to be permanently withdrawn without replacement**

<i>Chart</i>	<i>On publication of new chart</i>
Aus 422	Aus 4644
Aus 423	Aus 4643

For further details refer to the AHS website at [www.hydro.gov.au](http://www.hydro.gov.au) for new edition and new chart stock arrival information.

When placing orders with a chart agent, mariners should advise whether their order pertains to the current edition or the new edition.

**986\* AUSTRALIA - NEW SOUTH WALES - Crookhaven - Depth; aeronautical beacons**

K King (AA492698)

**Aus 191 (plan, Crookhaven River Entrance) [642/2010]**

Insert	upright sounding, 4 <sub>s</sub> , enclosed by broken contour with legend, <i>Rep (2010)</i>	34° 54'.440 S	150° 46'.466 E
--------	--	---------------	----------------

**Aus 808 [193/2010]**

Insert	upright sounding, 4 <sub>s</sub> , and extend contour E to enclose with legend, <i>Rep (2010)</i>	34° 54'.44 S	150° 46'.47 E
Delete	depth, 7 <sub>3</sub> m	34° 54'.2 S	150° 46'.4 E
	aero beacon	33° 59'.2 S	150° 58'.7 E
	aero beacon	34° 33'.5 S	150° 47'.4 E

**AX 0808E [193/2010]**

Insert	upright sounding, 4 <sub>s</sub> , and extend contour E to enclose with legend, <i>Rep (2010)</i>	34° 54'.44 S	150° 46'.47 E
Delete	depth, 7 <sub>3</sub> m	34° 54'.2 S	150° 46'.4 E
	aero beacon	33° 59'.2 S	150° 58'.7 E
	aero beacon	34° 33'.5 S	150° 47'.4 E

24 September 2010

**987\* AUSTRALIA - NEW SOUTH WALES - Port Jackson - Goat Island - Light and beacons established**  
 Sydney Ports Corporation (AA492726, AA490396, AA490397)

**Aus 202 [824/2010]**

Insert	beacon with triangular topmark apex down	33° 51'.083 S	151° 11'.826 E
	beacon with triangular topmark apex up	33° 51'.094 S	151° 11'.891 E
	a dashed line in a direction 101° for a distance of 1800m, with legend 281°, emanating from beacon light, F.G	33° 51'.083 S	151° 11'.826 E
		33° 51'.452 S	151° 12'.107 E

**988\* AUSTRALIA - QUEENSLAND - Moreton Bay - North East Channel - Light buoy repositioned**  
 Maritime Safety Queensland Notice 765/2010 (AA493139)

**Aus 235 [829/2010]**

Move	light buoy	26° 59'.9 S	153° 20'.0 E
	to	26° 59'.94 S	153° 19'.95 E

**Aus 236 [897/2010]**

Move	light buoy	26° 59'.9 S	153° 20'.0 E
	to	26° 59'.94 S	153° 19'.95 E

**989\* AUSTRALIA - QUEENSLAND - Brisbane River - Lytton Reach - Infrastructure**  
*Former Notice - 502(T)/2010 is cancelled*  
 Maritime Safety Queensland Notice 745/2010 (AA494504, AA494505, AA494512)

**Aus 237 [828/2010]**

Insert	accompanying block	27° 25'.2 S	153° 08'.1 E
--------	--------------------	-------------	--------------

**Aus 238 [898/2010]**

Insert	accompanying block	27° 25'.2 S	153° 08'.1 E
--------	--------------------	-------------	--------------

**990\* AUSTRALIA - QUEENSLAND - Great Sandy Strait - Big Woody Island - Artificial reef**  
 S Tanner (AA343131, AA343132)

**Aus 241 [148/2010]**

Insert	accompanying block	25° 16'.0 S	152° 59'.0 E
--------	--------------------	-------------	--------------

**991\* AUSTRALIA - CORAL SEA - Lihou Reef - Light buoy established northeastwards**  
*Former Notice - 930(T)/2010 is cancelled*  
 Bureau of Meteorology (AA492478, AA492658)

**Aus 4621 (INT 621) [783/2010]**

Substitute	grey conical light buoy, Fl. Y.2s, without topmark	14° 48'.2 S	153° 35'.1 E
------------	--	-------------	--------------

**AX 4621F [783/2010]**

Substitute	grey conical light buoy, Fl. Y.2s, without topmark	14° 48'.2 S	153° 35'.1 E
------------	--	-------------	--------------

**992\* PAPUA NEW GUINEA - Sepaisapai Island - Island**  
Australian Hydrographic Service (AA494516)

<b>Aus 508</b> [413/2010]			
Delete	island with legend, Sepaisapai Island	10° 06'.9 S	151° 02'.7 E
<b>Aus 509</b> [362/2010]			
Delete	island with legend, Sepaisapai Island	10° 06'.9 S	151° 02'.7 E
<b>Aus 513</b> [362/2010]			
Delete	island with legend, Sepaisapai Island	10° 06'.9 S	151° 02'.7 E
<b>Aus 518</b> [251/2010]			
Delete	island with legend, Sepaisapai Island	10° 06'.9 S	151° 02'.7 E
<b>Aus 628</b> [361/2010]			
Delete	island with legend, Sepaisapai Island	10° 06'.9 S	151° 02'.7 E

**993\* PAPUA NEW GUINEA - Willaumez Peninsula - Depths**  
Geoscience Australia (DHDB 1449446)

<b>Aus 547</b> [993/2009]			
Insert	accompanying block	5° 03'.0 S	149° 58'.0 E

**994\* AUSTRALIA - NORTHERN TERRITORY - Warnawi Island - Light**  
Australian Hydrographic Service (AA494110)

<b>Aus 716</b> [NE 13/3/2009]			
Delete	light	11° 48'.8 S	136° 01'.7 E

**995\* AUSTRALIA - Adele Island to Dampier - Chart limits; legends**  
Australian Hydrographic Service (AA486596)

<b>Aus 4722 (INT 722)</b> [908/2010]			
Insert	magenta continuous line, between	16° 51'.0 S	118° 50'.0 E
		16° 51'.0 S	118° 46'.0 E
		20° 05'.0 S	118° 46'.0 E
		20° 05'.0 S	118° 50'.0 E
Amend	legend to <i>Adjoining Chart INT 723 (Aus 4723)</i> in W border	12° 00'.0 S	116° 20'.0 E
Delete	legend <i>Adjoining Chart Aus 415</i> in W border	19° 00'.0 S	116° 20'.0 E
	magenta continuous line, between	16° 51'.0 S	118° 50'.0 E
		20° 05'.0 S	118° 50'.0 E
<b>AX 4722F</b> [908/2010]			
Insert	magenta continuous line, between	16° 51'.0 S	118° 50'.0 E
		16° 51'.0 S	118° 46'.0 E
		20° 05'.0 S	118° 46'.0 E
		20° 05'.0 S	118° 50'.0 E
Amend	legend to <i>Adjoining Chart INT 723 (Aus 4723)</i> in W border	12° 00'.0 S	116° 20'.0 E
Delete	legend <i>Adjoining Chart Aus 415</i> in W border	19° 00'.0 S	116° 20'.0 E
	magenta continuous line, between	16° 51'.0 S	118° 50'.0 E
		20° 05'.0 S	118° 50'.0 E

**996\* AUSTRALIA - WESTERN AUSTRALIA - Red Bluff - Light repositioned**  
 Department of Transport WA (AA474162, AA474163)

**Aus 323 [482/2010]**

Move	light	17° 03'.4 S	122° 19'.0 E
	to	17° 03'.29 S	122° 19'.11 E

**997\* AUSTRALIA - WESTERN AUSTRALIA - Lancelin to Akimos Reef - Pipeline; aeronautical beacons**  
*Former Notice - 82(T)/2010 is cancelled*  
 Department of Transport WA (DHDB 1602886)

**Aus 334 [597/2010]**

Insert	outfall pipeline, between	31° 36'.92 S	115° 39'.81 E
		31° 37'.72 S	115° 37'.66 E
Delete	aero beacon	32° 00'.3 S	115° 02'.6 E

**Aus 754 [955/2010]**

Insert	outfall pipeline, between	31° 36'.92 S	115° 39'.81 E
		31° 37'.72 S	115° 37'.66 E
Delete	aero beacon	31° 01'.5 S	115° 20'.4 E
	aero beacon	32° 00'.3 S	115° 02'.6 E

**AX 0334E [597/2010]**

Insert	outfall pipeline, between	31° 36'.92 S	115° 39'.81 E
		31° 37'.72 S	115° 37'.66 E
Delete	aero beacon	32° 00'.3 S	115° 02'.6 E

**AX 0754E [955/2010]**

Insert	outfall pipeline, between	31° 36'.92 S	115° 39'.81 E
		31° 37'.72 S	115° 37'.66 E
Delete	aero beacon	31° 01'.5 S	115° 20'.4 E
	aero beacon	32° 00'.3 S	115° 02'.6 E

**AX 66002 [955/2010]**

Insert	outfall pipeline, between	31° 36'.92 S	115° 39'.81 E
		31° 37'.72 S	115° 37'.66 E
Delete	aero beacon	31° 01'.5 S	115° 20'.4 E
	aero beacon	32° 00'.3 S	115° 02'.6 E

**998\* AUSTRALIA - WESTERN AUSTRALIA - Warnbro Sound - Port Kennedy - Infrastructure**  
*Former Notice - 397(T)/2010 is cancelled*  
 LINKS Surveying (AA493655)

**Aus 116 (plan, Warnbro Sound) [793/2010]**

Insert	continuous line with legend, <i>Jetty</i> , between	32° 21'.981 S	115° 43'.747 E
		32° 21'.929 S	115° 43'.746 E

**999\* AUSTRALIA - WESTERN AUSTRALIA - SOUTH AUSTRALIA - Esperance to Whidbey Isles - Legends**  
Australian Hydrographic Service (AA486596)

**Aus 4726 (INT 726) [371/2009]**

Amend	legend to <i>Adjoining Chart INT 725 (Aus 4725)</i> in N border	32° 00'.0 S	113° 30'.0 E
	legend to <i>Adjoining Chart INT 727 (Aus 4727)</i> in E border	34° 30'.0 S	123° 00'.0 E

**1000\* AUSTRALIA - SOUTH AUSTRALIA - Thevenard - Yatala Channel - Depths**  
Department for Transport, Energy and Infrastructure SA (DHDB 1525123)

**Aus 122 [261/2010]**

Insert	accompanying block	32° 10'.5 S	133° 37'.0 E
Substitute	accompanying ZOC diagram	32° 08'.7 S	133° 33'.5 E

**1001\* AUSTRALIA - SOUTH AUSTRALIA - Macdonnell Sound - Troubridge Shoals - Depths**  
Australian Hydrographic Service (AA482168)

**Aus 139 (plan, Macdonnell Sound) [914/2010]**

Insert	accompanying block	35° 07'.0 S	137° 48'.0 E
--------	--------------------	-------------	--------------

**1002\* AUSTRALIA - TASMANIA - River Tamar - Long Reach to Pedders Point - Light beacon repositioned; beacon removed**

*Former Notice - 1086(T)/2009 is cancelled*

Marine and Safety Tasmania M83/2010, M91/2010 (AA485890, AA494173, AA494618)

**Aus 167 (inset, Long Reach) [310/2010]**

Move	light beacon to	41° 09'.63 S	146° 54'.94 E
		41° 09'.622 S	146° 54'.955 E
Delete	depth, 7 <sub>9</sub> m	41° 09'.58 S	146° 54'.97 E

**Aus 168 [1315/2009]**

Move	light beacon to	41° 09'.63 S	146° 54'.94 E
		41° 09'.622 S	146° 54'.955 E
Delete	depth, 7 <sub>9</sub> m beacon	41° 09'.58 S	146° 54'.97 E
		41° 20'.30 S	147° 02'.74 E

**1003\* AUSTRALIA - TASMANIA - Devonport - Dredged depths; aeronautical beacon**

Former Notice - 979(T)/2009 is cancelled  
Tasmanian Ports Corporation (AA492684)

**Aus 164 [309/2010]**

Insert	contour, between	41° 09'.567 S	146° 22'.333 E
		41° 09'.614 S	146° 22'.358 E
		41° 09'.587 S	146° 22'.430 E

Delete	contour, between	41° 09'.57 S	146° 22'.33 E
		41° 09'.59 S	146° 22'.43 E
	aero beacon	41° 10'.4 S	146° 25'.7 E

**Aus164 (plan, Devonport)**

Insert	accompanying block	41° 10'.8 S	146° 22'.0 E
	depth, 10m, enclosed by contour	41° 09'.614 S	146° 22'.358 E
	legend, (2005)	41° 10'.10 S	146° 22'.06 E

**1004\* AUSTRALIA - VICTORIA - Port Phillip - Point Richards Channel - Light beacon**

T Morgan, Victorian Regional Channels Authority (AA494177, AA494178)

**Aus 157 [751/2010]**

Insert	legend, No18	38° 07'.961 S	144° 32'.002 E
--------	--------------	---------------	----------------

**1005\* AUSTRALIA - VICTORIA - Cape Conran - Gas field southwards**

AGR Group (AA486365, AA486366)

**Aus 357A [604/2010]**

Insert	accompanying block	38° 22'.0 S	148° 38'.0 E
--------	--------------------	-------------	--------------

**Aus 487 [916/2010]**

Insert	accompanying block	38° 17'.0 S	148° 50'.0 E
--------	--------------------	-------------	--------------

**1006(T)/2010 AUSTRALIA - NEW SOUTH WALES - Shoalhaven Bight - Unexploded ordnance**

*Former Notice* - 496(T)/2009 is cancelled  
Department of Defence (AA495456)

Cancel this notice on receipt.

**Chart formerly affected - Aus 807 - Aus 808 - AX 0808E - AU435150**

**1007(T)/2010 AUSTRALIA - QUEENSLAND - Cape Moreton - Obstruction removed southeastwards**

*Former Notice* - 429(T)/2009 is cancelled  
Maritime Safety Queensland (AA494995)

Cancel this notice on receipt.

**Chart formerly affected - Aus 236 - Aus 364 - Aus 814**

**1008(T)/2010 AUSTRALIA - QUEENSLAND - Moreton Island - Obstruction**

Maritime Safety Queensland Notice 811(T)/2010 (AA495200)

An obstruction marked by buoys exists in position 27° 15'.82 S 153° 39'.10 E (WGS84 datum).

Mariners are advised to navigate with caution in the area.

**Chart temporarily affected - Aus 814**

**1009(T)/2010 AUSTRALIA - QUEENSLAND - Moreton Bay - Brisbane River - Depth information and under keel clearances**  
 Former Notices - 694(T)/2007, 810(T)/2008 are cancelled  
 Port of Brisbane Corporation (AA494886)

Available depths and under keel clearances (UKC) at 16 September 2010:

<i>Berth</i>	<i>Metres</i>	<i>Remarks</i>
* Fisherman Islands No10	14.2	
* Fisherman Islands No9	14.1	
* Fisherman Islands No8	13.9	
* Fisherman Islands No7	13.9	
* Fisherman Islands No6	13.9	
Fisherman Islands No5	14.0	
Fisherman Islands No4	14.0	
Fisherman Islands No3	14.0	
Fisherman Islands No2	14.0	
* Fisherman Islands No1	14.1	
* Fisherman Islands Grain and Woodchip	13.1	
Caltex Fisherman Islands	14.3	
* BP Luggage Point	14.2	
* Fisherman Islands Coal	13.5	
* Fisherman Islands General Purpose	11.5	
* Caltex Products	10.0	
* QCL	9.8	
BP Products	10.9	
* Shell	10.6	
* Pacific Terminals	10.2	
* Incitec North	10.2	
Incitec South	10.5	
Pinkenba 1	10.5	
Pinkenba 2	10.5	
* Riverside Marina	5.0	
Sugar Terminal	9.7	
Cairncross Fitting Out Wharf	6.6	
* Cairncross Breasting Wharf	6.5	
* Maritime No3	6.5	(not maintained)
Maritime No2	10.3	
* Maritime No1	9.1	
Hamilton No4	10.3	
* Hamilton No1	9.4	
Brisbane Cruise Ship Terminal	9.4	
	<i>Metres</i>	<i>UKC/Remarks</i>
<i>Moreton Bay :</i>		
* North East Channel	5.5	1.5
* North West Channel	15.0	2.3 (280m width)
* North West Bypass Channel	9.2	1.6
* Spitfire Channel	15.0	1.5 (600m width)
East Knoll Bypass Channel	6.9	1.4
* East Channel	15.0	1.5 (300m width from western side)
Main Channel (M8 - M9)	10.0	1.8
* Entrance Channel (E5 – EBCN)	14.7	1.5
<i>Brisbane River :</i>		
Entrance Beacons and Bar Cutting	14.0	1.46
Fisherman Islands Swing Basin	14.0	1.3
Pelican Banks Reach to Hamilton Reach	9.1	0.6 - 0.9

\*Indicates new or revised entry.

**Chart temporarily affected - Aus 235 - Aus 236 - Aus 237 - Aus 238 - AU427153 - AU428153 - AU5237X8**

**1010(T)/2010 AUSTRALIA - QUEENSLAND - Moreton Bay - Wynnum - Shoaling removed**

*Former Notice - 87(T)/2009 is cancelled*  
Maritime Safety Queensland (AA495022)

Cancel this notice on receipt.

**Chart formerly affected - Aus 236 - AU5237X8**

**1011(T)/2010 AUSTRALIA - QUEENSLAND - Moreton Bay - Fisherman Islands - Light buoys withdrawn**

*Former Notice - 710(T)/2010 is cancelled*  
Maritime Safety Queensland Notice 654/2010 (AA484380)

Cancel this notice on receipt.

**Chart formerly affected - Aus 236 - Aus 237 - AU428153 - AU5237X8**

**1012(T)/2010 AUSTRALIA - QUEENSLAND - Moreton Bay - Fisherman Islands - Lights established**

Maritime Safety Queensland Notice 803(T)/2010 (AA495045)

Lights are being established at 50m intervals along the sea wall between positions 27° 20'.91 S 153° 11'.26 E and 27° 21'.70 S 153° 11'.71 E.

During the establishment and testing process, the flashing interval and intensity of the lights will be varied.

Mariners are advised to navigate with caution in the area.

**Chart temporarily affected - Aus 236 - Aus 237 - AU428153 - AU5237X8**

**1013(T)/2010 AUSTRALIA - QUEENSLAND - Brisbane River - Whyte Island - Light beacon re-established**

*Former Notice - 711(T)/2010 is cancelled*  
Maritime Safety Queensland Notice 618/2010 (AA482656)

Cancel this notice on receipt.

**Chart formerly affected - Aus 237 - AU5237X8**

**1014(T)/2010 AUSTRALIA - QUEENSLAND - Brisbane River - Lytton Reach - Mooring blocks and pipeline removed**

*Former Notice - 1132(T)/2007 is cancelled*  
Maritime Safety Queensland (AA494995)

Cancel this notice on receipt.

**Chart formerly affected - Aus 237 - Aus 238**

**1015(T)/2010 AUSTRALIA - QUEENSLAND - Arkwright Point - Scientific instruments northeastwards**

*Date - Until 24 October 2010*  
Maritime Safety Queensland Notice 818(T)/2010 (AA495675)

Scientific instruments marked by special light buoys, Q.Y, exist in positions (WGS84 datum):

26° 29'.22 S 153° 06'.78 E  
26° 29'.65 S 153° 06'.68 E  
26° 30'.07 S 153° 06'.66 E  
26° 29'.78 S 153° 07'.07 E  
26° 29'.78 S 153° 07'.53 E.

**Chart temporarily affected - Aus 365**

**1016(T)/2010 AUSTRALIA - QUEENSLAND - Gladstone - Harbour works***Date* - Until 4 October 2010

Maritime Safety Queensland Notice 794(T)/2010 (AA494833)

The barge MV *Capricorn* is conducting piling operations in the marina in the vicinity of position 23° 49'.92 S 151° 14'.50 E.

The barge will display appropriate lights and symbols.

Mariners are advised to navigate with caution in the area.

**Chart temporarily affected - Aus 244 - Aus 245 - AU5244X5****1017(T)/2010 AUSTRALIA - QUEENSLAND - Gladstone - Targinie Channel to Kangaroo Island - Scientific instruments***Date* - Until 7 October 2010

Maritime Safety Queensland Notice 783(T)/2010 (AA494871)

Subsurface scientific instruments exist in positions:

23° 48'.28 S 151° 12'.31 E

23° 47'.19 S 151° 12'.68 E

23° 44'.16 S 151° 09'.43 E.

**Chart temporarily affected - Aus 245 - Aus 819 - AU424151 - AU5244X5****1018(T)/2010 AUSTRALIA - QUEENSLAND - Gladstone - North Passage Island - Scientific instruments***Former Notice* - 612(T)/2010 is cancelled*Date* - Until 20 December 2010

Maritime Safety Queensland Notice 800(T)/2010 (AA494978)

Subsurface scientific instruments exist in positions 23° 46'.02 S 151° 10'.44 E and 23° 45'.69 S 151° 10'.71 E.

Mariners are advised to navigate with caution in the area.

**Chart temporarily affected - Aus 245 - Aus 819 - AU424151 - AU5244X5****1019(T)/2010 AUSTRALIA - QUEENSLAND - Shoalwater Bay - Live firing completed***Former Notice* - 854(T)/2010 is cancelled

Maritime Safety Queensland Notice 638(T)/2010 (AA484708)

Cancel this notice on receipt.

**Chart formerly affected - Aus 260 - Aus 367 - Aus 822 - AX 0260E - AX 0367E - AX 0822E - AX 60260 - AU423150****1020(T)/2010 AUSTRALIA - QUEENSLAND - Leeper Reef - Light buoy re-established***Former Notice* - 317(T)/2010 is cancelled

Maritime Safety Queensland Notice 807/2010 (AA494988)

Cancel this notice on receipt.

**Chart formerly affected - Aus 249 - Aus 823 - AX 0249E - AX 0823E - AU422149****1021(T)/2010 AUSTRALIA - QUEENSLAND - Hay Point - Drilling operations completed***Former Notice* - 927(T)/2010 is cancelled

Maritime Safety Queensland Notice 806/2010 (AA494986)

Cancel this notice on receipt.

**Chart formerly affected - Aus 250 - AU5250P2**

**1022(T)/2010 AUSTRALIA - QUEENSLAND - Gladys Inlet - Shoaling; light buoy off station**  
 Maritime Safety Queensland Notices 801(T)/2010; 802(T)/2010 (AA494898, AA494990)

Shoaling exists in the entrance to Johnstone River (17° 30'.5 S 146° 04'.7 E).

The light buoy, *Fl.R.3s* (17° 30'.37 S 146° 04'.76 E), is off station.

Mariners are advised to navigate with caution in the area.

**Chart temporarily affected - Aus 258 - Aus 829 - AU418146**

**1023(T)/2010 AUSTRALIA - QUEENSLAND - Cairns - Dredging operations completed**

*Former Notice* - 970(T)/2010 is cancelled  
 Maritime Safety Queensland Notice 779(T)/2010 (AA493426)

Cancel this notice on receipt.

**Chart formerly affected - Aus 262 - Aus 263 - AX 63262 - AU5262X4**

**1024(T)/2010 AUSTRALIA - QUEENSLAND - Yorkeys Knob - Light buoy withdrawn**

*Former Notice* - 1387(T)/2009 is cancelled  
 Maritime Safety Queensland (AA495835)

Cancel this notice on receipt.

**Chart formerly affected - Aus 262 - Aus 830 - AX 6027S - AX 63262 - AU417145 - AU5262X4**

**1025(T)/2010 AUSTRALIA - QUEENSLAND - Arlington Reef - Wreck salvaged**

*Former Notice* - 968(T)/2009 is cancelled  
 Maritime Safety Queensland (AA495836)

Cancel this notice on receipt.

**Chart formerly affected - Aus 830 - AX 6027S - AU417145**

**1026(T)/2010 AUSTRALIA - QUEENSLAND - Port Douglas - Light beacon re-established; light buoy withdrawn**

*Former Notice* - 1135(T)/2009 is cancelled  
 Maritime Safety Queensland (AA495842)

Cancel this notice on receipt.

**Chart formerly affected - Aus 270 - AU5270P1**

**1027(T)/2010 AUSTRALIA - TIMOR SEA - Seismic survey**

*Date* - Until 31 October 2010  
 Finder Exploration Pty Ltd (AA489841)

RV *Aquila Explorer*, with a 10000m towed array, is conducting a survey in the area bounded by the following positions:

11° 20'.0 S 127° 45'.0 E  
 12° 20'.0 S 127° 45'.0 E  
 12° 20'.0 S 128° 20'.0 E.

**Chart temporarily affected - Aus 309 - Aus 311 - Aus 315 - AX 0309F - AX 0311F - AX 0315F - AX 72309 - AU312127 - AU312128 - AU313127 - AU313128**

**1028(T)/2010 AUSTRALIA - WESTERN AUSTRALIA - Browse Island - Scientific instrument recovered northwestwards**  
*Former Notice - 100(T)/2009 is cancelled*  
 Shell Development (Australia) Pty Ltd (AA494304)

Cancel this notice on receipt.

**Chart formerly affected - Aus 319 - AX 0319F - AU314123**

**1029(T)/2010 AUSTRALIA - WESTERN AUSTRALIA - James Price Point - Mooring buoys**  
*Former Notice - 976(T)/2010 is cancelled*  
 Date - Until 1 November 2010  
 P Slape (AA494823, AA494852)

Mooring buoys exist in positions 17° 30'.97 S 122° 07'.10 E and 17° 30'.53 S 122° 08'.00 E.

**Chart temporarily affected - Aus 324 - AU418122**

**1030(T)/2010 AUSTRALIA - WESTERN AUSTRALIA - North West Reefs to Regnard Bay - Platform; pipeline**  
 Date - Until 16 December 2010  
 Apache Energy Ltd (AA495350, AA493059)

Pipelay vessel *Leighton Stealth* and support vessels are conducting pipelay operations between the following positions (WGS84 datum):

20° 37'.09 S 116° 21'.01 E  
 20° 49'.48 S 116° 21'.13 E  
 20° 50'.42 S 116° 20'.94 E.

A 300m exclusion zone exists along the pipeline in depths <10m and 500m in depths >10m.

The Reindeer platform (20° 37'.09 S 116° 21'.01 E) will be established in mid December 2010.

**Chart temporarily affected - Aus 327 - Aus 741 - Aus 742 - AU421116**

**1031(T)/2010 AUSTRALIA - WESTERN AUSTRALIA - Ningaloo Reef - Scientific instruments**  
 Date - Until 17 November 2010  
 Australian Institute of Marine Science (AA494305)

Subsurface scientific instruments exist in the following positions:

22° 03'.48 S 113° 49'.22 E  
 22° 13'.00 S 113° 45'.75 E  
 22° 13'.19 S 113° 46'.65 E  
 22° 22'.31 S 113° 42'.30 E.

**Chart temporarily affected - Aus 329 - Aus 745 - AU323113**

**1032(T)/2010 AUSTRALIA - SOUTH AUSTRALIA - Port Augusta - Bluff Reach - Light beacon damaged**  
*Former Notice - 265(T)/2008 is cancelled*  
 Department of Transport, Energy and Infrastructure SA (AA495435, AA495437)

No 9 light beacon K1952 (32° 39'.0 S 137° 46'.2 E) has been damaged; a light beacon, Q(9)15s, with west cardinal topmark has been established in situ.

**Chart temporarily affected - Aus 778 - AU433137**

**1033(T)/2010 AUSTRALIA - VICTORIA - Barwon Heads - Lights trial completed**

*Former Notice* - 1467(T)/2009 is cancelled  
 Victorian Notice 88/2010 (AA495362)

Cancel this notice on receipt.

**Chart formerly affected - Aus 143 - AU439144****1034(T)/2010 AUSTRALIA - VICTORIA - Barwon River - Submarine pipeline**

*Former Notice* - 980(T)/2010 is cancelled  
*Date* - Until 5 November 2010  
 Victorian Notice 85(T)/2010, 87(T)/2010 (AA493149, AA493467, AA493468, AA495365)

A submarine pipeline is being laid across the Barwon River between 38° 16'.52 S 144° 29'.80 E and 38° 16'.59 S 144° 30'.10 E.

An exclusion zone exists in an area bounded by the following positions:

38° 16'.51 S 144° 29'.81 E  
 38° 16'.53 S 144° 29'.80 E  
 38° 16'.60 S 144° 30'.09 E  
 38° 16'.58 S 144° 30'.12 E.

A navigation channel over the pipeline will be marked by light buoys. The length of the pipeline will be marked by special light buoys. The water depth over the pipeline will be reduced to 0.4m (LAT).

Further information can be obtained by contacting Barwon Water on 1300 656 007 and Port of Barwon Heads on (03) 5254 1118.

Mariners are advised to navigate with caution in the area.

**Chart temporarily affected - Aus 143 - AU439144****1035(T)/2010 AUSTRALIA - VICTORIA - Port Phillip - South Channel - Obstruction**

*Former Notice* - 797(T)/2007 is cancelled  
 Victorian Notice 92(T)/2010 (AA495912)

An obstruction marked by three isolated danger light buoys, *F(2)4s*, exists in position 38° 19'. 08 S 144° 49'. 61 E

Mariners are advised to navigate with caution in the area.

**Chart temporarily affected - Aus 143 - Aus 158****1036(T)/2010 AUSTRALIA - VICTORIA - Port Phillip - Port Melbourne to St Kilda - Navaid upgrade works**

*Date* - Until 22 October 2010  
 Victorian Notice 90(T)/2010 (AA495387)

Navaid upgrade works are in progress along the foreshore from Port Melbourne (37° 50'.5 S 144° 55'.0 E) to St Kilda Marina (37° 52'.5 S 144° 58'.5 E). Works involve diving and piling operations and the removal and establishment of nav aids approximately 200m from shore.

All hazards to navigation will display appropriate lights.

**Chart temporarily affected - Aus 154 - Aus 155 - AU438144**

**1037(T)/2010 AUSTRALIA - VICTORIA - Port Phillip - Mornington - Harbour works**

*Former Notice* - 983(T)/2010 is cancelled

*Date* - Until 17 December 2010

Victorian Notice 84(T)/2010, 93(T)/2010 (AA492656, AA495911)

Works associated with the reconstruction of Mornington Pier are in progress (38° 12'.73 S 145° 02'.02 E).

An exclusion zone exists within an area bounded by the following positions:

38° 12'.73 S 145° 02'.02 E

38° 12'.72 S 145° 02'.01 E

38° 12'.68 S 145° 02'.11 E

38° 12'.70 S 145° 02'.13 E

38° 12'.74 S 145° 02'.05 E

38° 12'.74 S 145° 02'.04 E

38° 12'.76 S 145° 02'.01 E.

All hazards to navigation will display appropriate lights and symbols.

Mariners are advised to navigate with caution in the area.

**Chart temporarily affected - Aus 143 - Aus 158 - AU5143P3****1038(T)/2010 AUSTRALIA - Summer time**

*Date* - Until 3 April 2011

Australian Government (AA495349)

Clocks will be advanced one hour at 0200 local time on 3 OCT 2010 and retarded one hour on 3 APR 2011 in the Australian Capital Territory, New South Wales, South Australia, Victoria and Tasmania.

No changes will be made in Queensland, Northern Territory and Western Australia.

## HYDROGRAPHIC REPORTS

<i>Locality</i>	<i>Report</i>	<i>Ship/Authority</i>	<i>Observer</i>
VIC- Point Richards Channel	Light beacon	SV <i>Zemira</i>	T Morgan
WA- West Holothuria Reef	Shoal	HMAS <i>Leeuwin</i>	

**NAVIGATION WARNINGS**

The following radio messages have been received during the period to 24 September 2010. Signal copies of these messages may be destroyed. It is recommended that the reprint of Navigational Warnings should be kept in a file or a book divided into areas. Cancellation should be made on receipt of signals and reprints.

Rigs on location other than those listed in the latest Section III summary are the subject of Radio Navigational Warnings. Rigs in transit will not be the subject of Warnings.

**AUSCOAST WARNING**

- 219 Cancelled.
- 220 Drill rig *Maersk Discoverer* in position 19° 54'.8 S 115° 07'.9 E. 2.5M clearance requested.
- 221 Cancelled.
- 222 Cancelled.
- 223 Cancelled.
- 224 Drill rig *Ocean America* in position 19° 06'.9 S 114° 16'.4 E. 2.5M clearance requested.
- 225 Drill rig *Ocean Epoch* in position 21° 34'.33 S 114° 09'.31 E. 2.5M clearance requested.
- 226 Cancelled.
- 227 Port Hedland C10 light beacon K1677 (20° 06'.36 S 118° 28'.28 E) unreliable.
- 228 Cancelled.
- 229 Cancelled.
- 230 Cancelled.
- 231 Uncharted shoal depth 8m located 13° 32'.22 S 125° 49'.92 E.
- 232 All Torres Strait tide gauges are unreliable.

**NAVAREA X WARNINGS**

- 008 As previously notified by NAVAREA warning, mariners using ECDIS are advised not to rely solely on automated voyage planning and monitoring checks and alarms. It is recommended that mariners undertake careful visual inspection of the entire planned route to confirm that it, and any deviations from it, is clear of dangers. The ECDIS display should be configured to display all soundings during this inspection.

Particular care should be taken when planned routes cross areas where only small scale ENC's (Usage Bands 1 and 2) are available. In some display configurations, such as when no names are shown, small islands and other point features may be difficult to identify or could be obscured by surrounding depth contours. Some ECDIS systems appear only to undertake route check functions on larger scale ENC's and therefore alarms might not activate. This may not be clearly indicated on the ECDIS display.

The International Hydrographic Organization (IHO) is leading technical action to investigate these matters in consultation with ECDIS equipment manufacturers. Further information will be made available through Notices to Mariners.

**Navigational warnings in force as at 240001UTC SEP 10.****Auscoast**

111 197 198 199 211 215 220 225 227 231 232

**Navarea X**

008

**Summary of mobile drilling rigs as at 240001UTC SEP 10.**

<i>Name</i>	<i>Position</i>
Songa Venus	13° 40'.46 S 123° 20'.63 E
EnSCO 109	20° 07'.71 S 116° 26'.05 E
Stena Clyde	20° 03'.70 S 115° 11'.00 E
Maersk Discoverer	19° 54'.80 S 115° 07'.90 E
Ocean America	19° 06'.90 S 114° 16'.40 E
Ocean Epoch	21° 34'.33 S 114° 09'.31 E
Jack Bates	20° 15'.57 S 113° 41'.21 E
Ocean Patriot	38° 10'.86 S 148° 35'.58 E

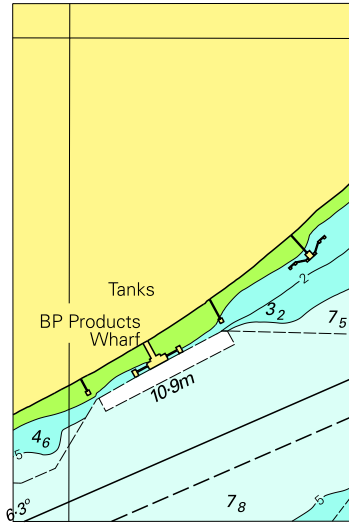
**NAVAREA XIV WARNINGS**

Nil.

**Navarea XIV warnings in force as at 240001UTC SEP 10.**

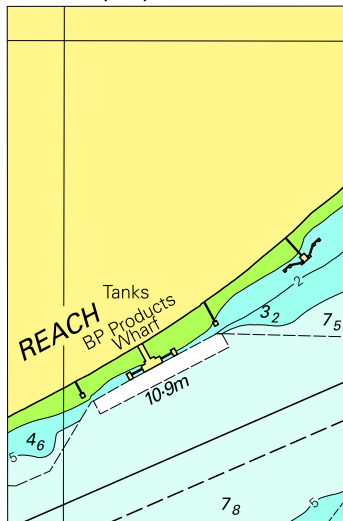
019 022 023 028

To accompany Australian Notice to Mariners 989/2010



© Commonwealth of Australia 2010  
Block for chart Aus 237 (44.8 x 68.3mm)

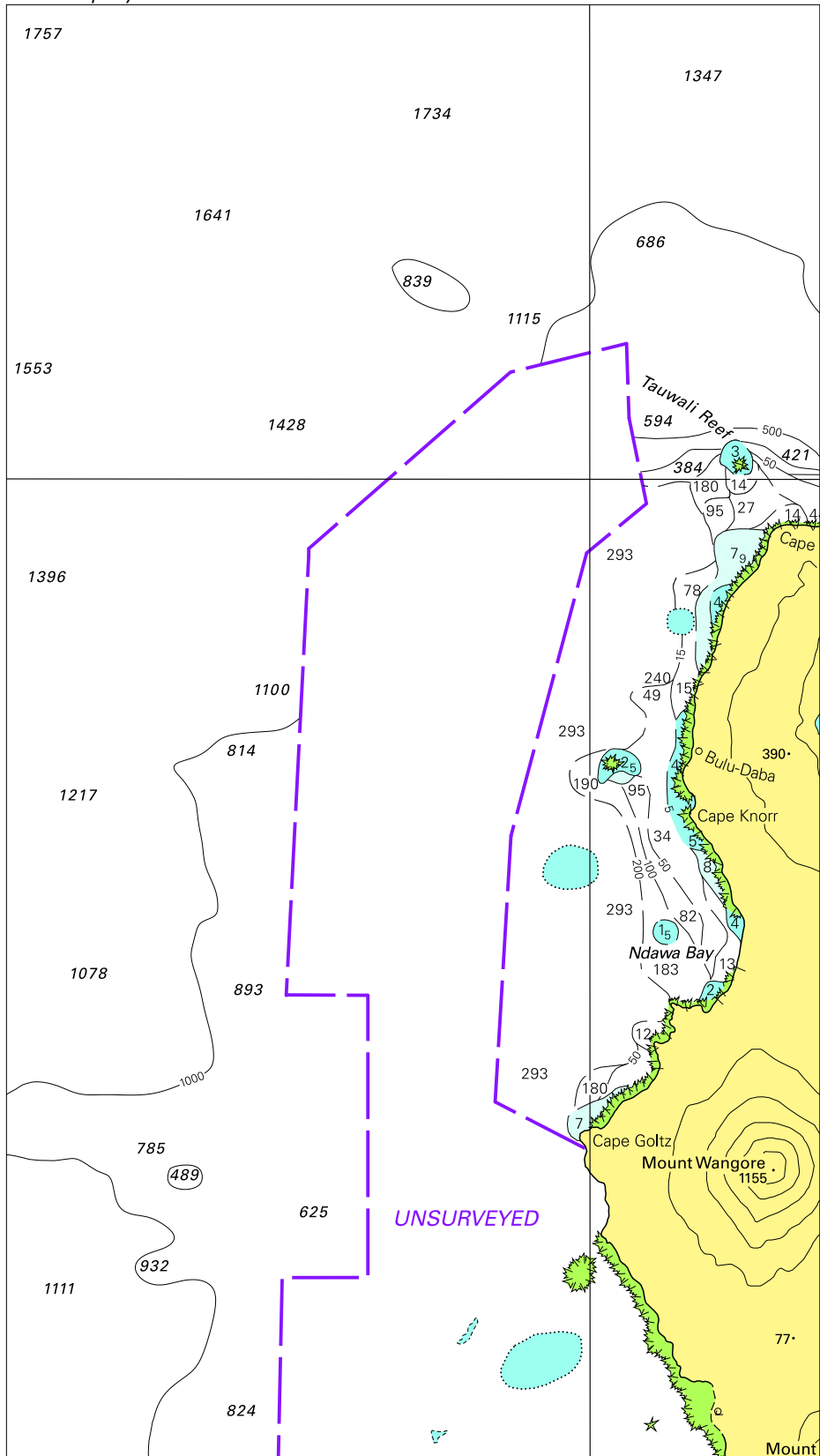
To accompany Australian Notice to Mariners 989/2010

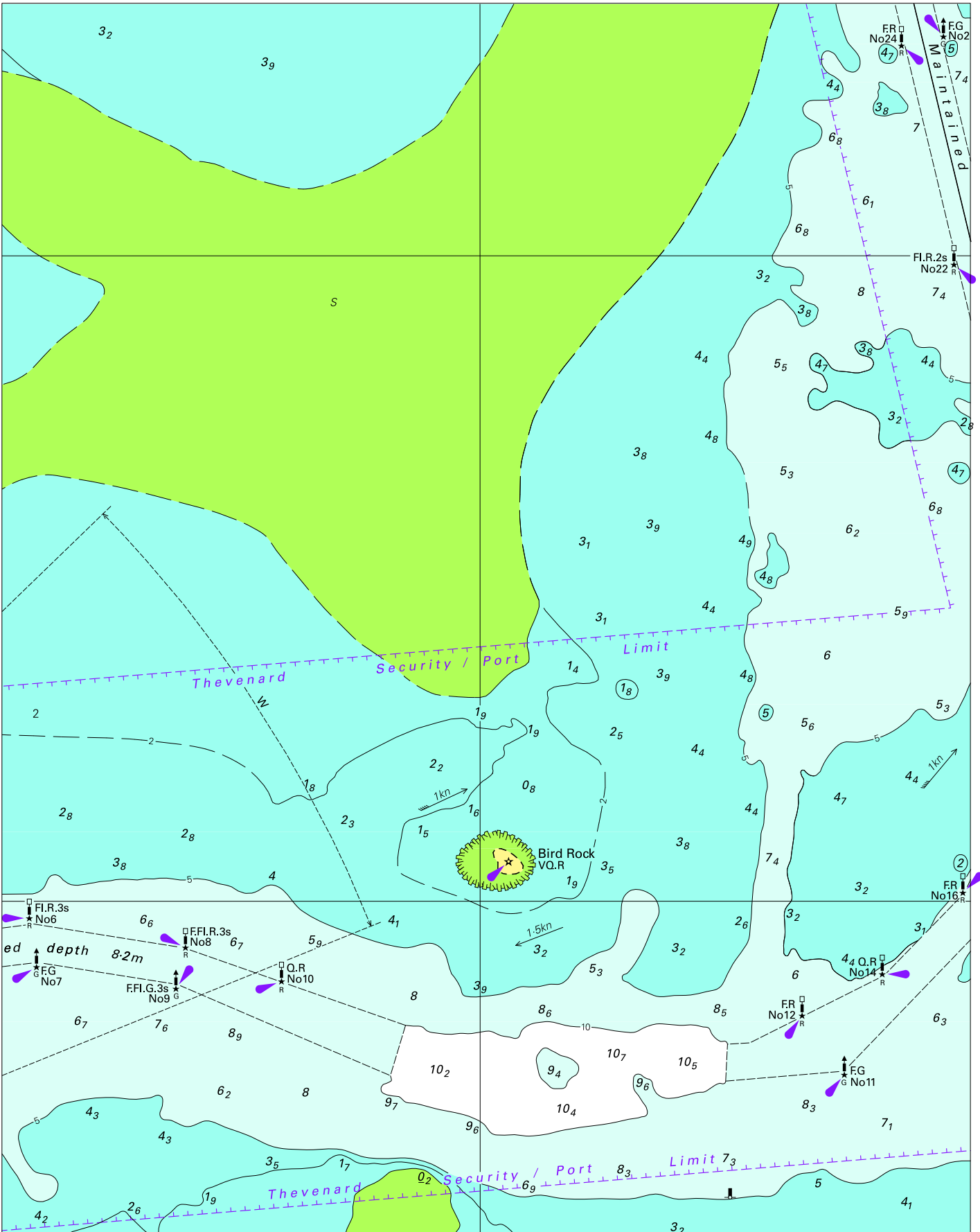


© Commonwealth of Australia 2010  
Block for chart Aus 238 (44.8 x 68.3mm)

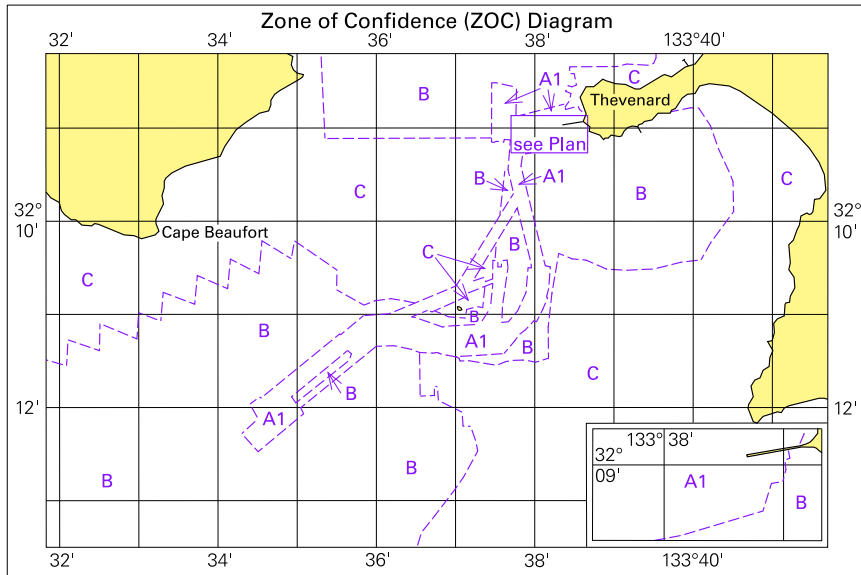


To accompany Australian Notice to Mariners 993/2010





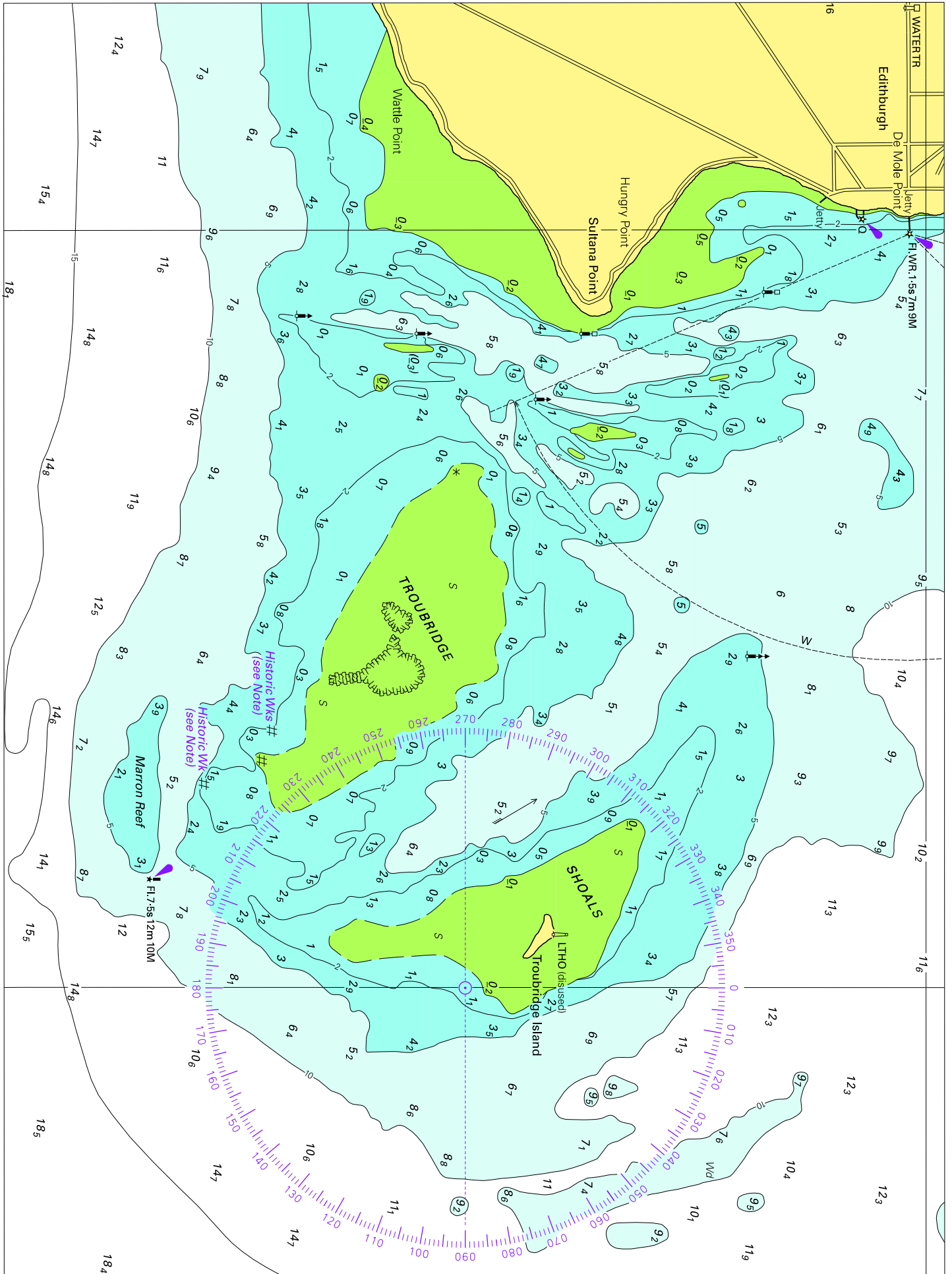
To accompany Notice to Mariners 1000/2010



Block for chart Aus122

©Commonwealth of Australia 2010

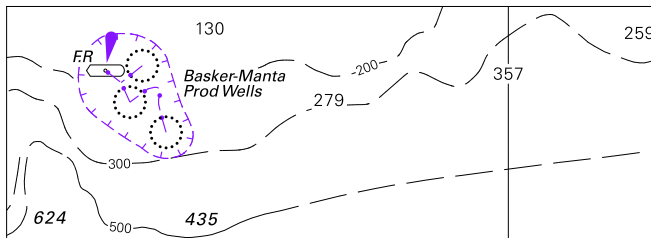
(114.1 x 75.6mm)







To accompany Australian Notice to Mariners 1005/2010



© Commonwealth of Australia

Block for chart Aus 487

(86.0x30.8mm)