



10 September 2010

Edition 18

Australian Notices to Mariners are the authority for correcting Australian Charts and Publications

AUSTRALIAN NOTICES TO MARINERS

Notices 945 – 984 

Published fortnightly by the Australian Hydrographic Service

Commodore R. NAIRN RAN
Hydrographer of Australia

SECTIONS.

- I. **Australian Notices to Mariners, including blocks and notes.**
- II. **Hydrographic Reports.**
- III. **Navigational Warnings.**

SUPPLEMENTS.

- I. **Tracings**
- II. **Cumulative List of Australian Notices to Mariners.**
- III. **Temporary and Preliminary Notices in force.**
- IV. **Amendments to Admiralty List of Lights and Fog Signals (Vol K),
Radio Signals (NP 281(2), 282, 283(2), 285, 286(4)) and Sailing
Directions (NP 9, 13, 14, 15, 33, 34, 35, 36, 39, 44, 51, 60, 61, 62, 100, 136).**

© Commonwealth of Australia 2010

This work is copyright. Apart from any use permitted under the Copyright Act 1968, no part may be reproduced by any process, adapted, communicated or commercially exploited without prior written permission from The Commonwealth represented by the Australian Hydrographic Service.

IMPORTANT NOTICE

This edition of Notices to Mariners includes all significant information affecting AHS products which the AHS has become aware of since the last edition. All reasonable efforts have been made to ensure the accuracy and completeness of the information, including third party information, on which these updates are based. The AHS regards third parties from which it receives information as reliable, however the AHS cannot verify all such information and errors may therefore exist. The AHS does not accept liability for errors in third party information.

GENERAL INSTRUCTIONS

The substance of these notices should be inserted on the charts affected.

Bearings are referred to the true compass and are reckoned clockwise from North; those relating to lights are given as seen by an observer from seaward. Positions quoted in permanent notices relate to the horizontal datum for the chart(s). When preliminary or temporary notices affect multiple charts, positions will be provided in relation to only one horizontal datum and that datum will be specified. When the multiple charts do not have a common horizontal datum, mariners will be required to adjust the position(s) for those charts not on the specified datum. The range quoted for a light is its nominal range. Depths are with reference to the chart datum of each chart. Heights are above mean high water springs or mean higher high water, as appropriate.

The capital letter (P) or (T) after the number of any notice denotes a preliminary or temporary notice respectively, which are contained separately at the end of the permanent notices. A star (*) adjacent to the number of a notice indicates that the notice is based on original information.

REPORTING OF DANGERS

Mariners are particularly requested to notify the AUSTRALIAN HYDROGRAPHIC SERVICE, Locked Bag 8801 Wollongong, NSW 2500 (Fax 02-4223 6599, e-mail Hydro.NTM@defence.gov.au or, alternatively by filling in and submitting the [Hydrographic Notes](#) forms located on the web site – www.hydro.gov.au), immediately on the discovery of new dangers or suspected dangers to navigation. For changes or defects in aids to navigation notify AusSAR (Fax 02-6230 6868 or email rccaus@amsa.gov.au).

AUTHORISED USE

Copies of Australian notices are available free of charge from the Australian Hydrographic Service (AHS) website (www.hydro.gov.au) and through the eNotices (email) service (www.hydro.gov.au/enotices/enotices.htm).

Individual Notices may be copied for the purpose of inserting Notice substance on official charts and publications. Paper copies may be printed by chart agents and distributed to customers on a cost recovery basis. Participating chart agents are listed on the AHS website as providing a 'Paper Notices to Mariners' service (www.hydro.gov.au/prodserv/distributors/distributors.htm). Copies of the notices may not be sold for profit without prior written agreement.

NUMERICAL INDEX OF NOTICES TO MARINERS

Edition No 18

Notices	Aus Chart, INT Chart, ENC Cell
945.....	Aus 51, 200, 203, AU210100, 210110, 220100, 240100, 240120, 321112, 321113, 322112, 323112
946.....	Aus 201, AX 63200
947.....	Aus 204, 217
948.....	Aus 610
949.....	Aus 252, 253, 268
950.....	Aus 397, 554
951.....	Aus 389
952.....	Aus 4
953.....	Aus 57, 58, 327, 741
954.....	Aus 753
955.....	Aus 754, AX 0754E, 66002
956.....	Aus 171, 173
957.....	Aus 172
958.....	Aus 175
959.....	Aus 150, 151, 152
960.....	Aus 152
961(T).....	Aus 198, AU5198X9
962(T).....	Aus 200, 203, AU5X200W
963(T).....	Aus 230
964(T).....	Aus 235, 236, AU427153
965(T).....	Aus 238, AU5237X8
966(T).....	Aus 236
967(T).....	Aus 235, AU427153
968(T).....	Aus 242, 243
969(T).....	Aus 248, 260, 261, 367, 820, 822, AX 0260E, 0367E, 0820E, 0822E, 60260, 67248, 67261, AU423150, 5261P1, 5261P2, 5XX248
970(T).....	Aus 262, 263, AX 63262, AU5262X4
971(T).....	Aus 830
972(T).....	Aus 379, AU410146
973(T).....	Aus 4, AU5XX4P1
974(T).....	Aus 309, 310, 316, 722, AX 0309F, 0310F, 72309, 72722, AU411129, 412129, 413129
975(T).....	Aus 314, 317, 319, AX 0314F, 0317F, 0319F, AU313123
976(T).....	Aus 324, AU418122
977(T).....	Aus 51
978(T).....	Aus 171
979(T).....	Aus 167, AU5167X8
980(T).....	Aus 143, AU439144
981(P).....	Aus 157, AU439144
982(T).....	Aus 143, AU439145, 5143P1
983(T).....	Aus 143, 158, AU5143P3
984(T).....	Aus 143, 158, AU439144, 5143P2

NUMERICAL INDEX OF CHARTS AFFECTED

Edition No 18

Aus Chart	Notices	Aus Chart	Notices
Aus 4.....	952, 973(T)	AX 0309F.....	974(T)
Aus 51.....	945, 977(T)	AX 0310F.....	974(T)
Aus 57.....	953	AX 0314F.....	975(T)
Aus 58.....	953	AX 0317F.....	975(T)
Aus 143.....	980(T), 982(T), 983(T), 984(T)	AX 0319F.....	975(T)
Aus 150.....	959	AX 0367E.....	969(T)
Aus 151.....	959	AX 0754E.....	955
Aus 152.....	959, 960	AX 0820E.....	969(T)
Aus 157.....	981(P)	AX 0822E.....	969(T)
Aus 158.....	983(T), 984(T)	AX 60260.....	969(T)
Aus 167.....	979(T)	AX 63200.....	946
Aus 171.....	956, 978(T)	AX 63262.....	970(T)
Aus 172.....	957	AX 66002.....	955
Aus 173.....	956	AX 67248.....	969(T)
Aus 175.....	958	AX 67261.....	969(T)
Aus 198.....	961(T)	AX 72309.....	974(T)
Aus 200.....	945, 962(T)	AX 72722.....	974(T)
Aus 201.....	946		
Aus 203.....	945, 962(T)		
Aus 204.....	947		
Aus 217.....	947		
Aus 230.....	963(T)	ENC Cell	Notices
Aus 235.....	964(T), 967(T)	AU210100.....	945
Aus 236.....	964(T), 966(T)	AU210110.....	945
Aus 238.....	965(T)	AU220100.....	945
Aus 242.....	968(T)	AU240100.....	945
Aus 243.....	968(T)	AU240120.....	945
Aus 248.....	969(T)	AU313123.....	975(T)
Aus 252.....	949	AU321112.....	945
Aus 253.....	949	AU321113.....	945
Aus 260.....	969(T)	AU322112.....	945
Aus 261.....	969(T)	AU323112.....	945
Aus 262.....	970(T)	AU410146.....	972(T)
Aus 263.....	970(T)	AU411129.....	974(T)
Aus 268.....	949	AU412129.....	974(T)
Aus 309.....	974(T)	AU413129.....	974(T)
Aus 310.....	974(T)	AU418122.....	976(T)
Aus 314.....	975(T)	AU423150.....	969(T)
Aus 316.....	974(T)	AU427153.....	964(T), 967(T)
Aus 317.....	975(T)	AU439144.....	980(T), 981(P), 984(T)
Aus 319.....	975(T)	AU439145.....	982(T)
Aus 324.....	976(T)	AU5XX4P1.....	973(T)
Aus 327.....	953	AU5143P1.....	982(T)
Aus 367.....	969(T)	AU5143P2.....	984(T)
Aus 379.....	972(T)	AU5143P3.....	983(T)
Aus 389.....	951	AU5167X8.....	979(T)
Aus 397.....	950	AU5198X9.....	961(T)
Aus 554.....	950	AU5X200W.....	962(T)
Aus 610.....	948	AU5237X8.....	965(T)
Aus 722.....	974(T)	AU5XX248.....	969(T)
Aus 741.....	953	AU5261P1.....	969(T)
Aus 753.....	954	AU5261P2.....	969(T)
Aus 754.....	955	AU5262X4.....	970(T)
Aus 820.....	969(T)		
Aus 822.....	969(T)		
Aus 830.....	971(T)		
AX 0260E.....	969(T)		

945 AUSTRALIA - Product

Australian Hydrographic Service (AA486596, AA491801, AA493498, AA493499)

New Edition

<i>Chart</i>	<i>Published</i>	<i>Title and description of amendments</i>	<i>Scale</i>	<i>Index Chart</i>	<i>Price</i>
Aus 51	27/8/2010	Australia - North West Coast - Western Australia - Port of Broome 17° 59'.1 S - 18° 01'.9 S 122° 10'.5 E - 122° 14'.2 E <i>New edition incorporating latest survey.</i>	1:10 000	Aus 5000	\$35.00

New Electronic Navigation Chart (Seafarer ENC)

<i>Cell Name</i>	<i>Released</i>	<i>Title</i>
AU210100	September 2010	Australia - Indonesia - Java Ridge (West)
AU210110	September 2010	Australia - Indonesia - Java Ridge (East)
AU220100	September 2010	Australia - Indian Ocean (North)
AU240100	September 2010	Australia - Cuvier Plateau to Diamantina Fault Zone
AU240120	September 2010	Australia - Esperance to Eucla
AU321112	September 2010	Indian Ocean - Cell 19
AU321113	September 2010	Indian Ocean - Cell 18
AU322112	September 2010	Indian Ocean - Cell 20
AU323112	September 2010	Indian Ocean - Cell 21

New Edition to be published shortly

<i>Chart</i>	<i>Title</i>	<i>Scale</i>	<i>Expected Publication Date</i>	<i>Expected Stock Availability</i>
Aus 200	Australia - East Coast - New South Wales - Port Jackson Plan: Parramatta River	1:20 000	10 September 2010	18 October 2010
Aus 203	Australia - East Coast - New South Wales - Port Jackson (Western Sheet) Parramatta and Lane Cove Rivers Inset: Parramatta River Parramatta River (continuation)	1:10 000 1:10 000 1:10 000	10 September 2010	18 October 2010

Chart permanently withdrawn

<i>Chart</i>	<i>On publication of new edition</i>
Aus 51	Aus 51

For further details refer to the AHS website at www.hydro.gov.au for new edition and new chart stock arrival information.

When placing orders with a chart agent, mariners should advise whether their order pertains to the current edition or the new edition.

946* AUSTRALIA - NEW SOUTH WALES - Port Jackson - Chowder Head - Mooring buoys repositioned

Sydney Ports Corporation (AA490396 - AA490398)

Aus 201 [471/2010]

Move	mooring buoy	33° 50'.41 S	151° 15'.29 E
	to	33° 50'.399 S	151° 15'.270 E
	mooring buoy	33° 50'.36 S	151° 15'.42 E
	to	33° 50'.366 S	151° 15'.452 E

AX 63200 [242/2010]

Move	light	33° 49'.38 S	151° 18'.02 E
	to	33° 49'.402 S	151° 18'.024 E
	mooring buoy	33° 50'.35 S	151° 15'.43 E
	to	33° 50'.366 S	151° 15'.452 E
	mooring buoy	33° 50'.40 S	151° 15'.28 E
	to	33° 50'.399 S	151° 15'.270 E

10 September 2010

947* AUSTRALIA - NEW SOUTH WALES - Cowan Creek - Refuge Bay - Raft removed

Former Notice - 1177(T)/2009 is cancelled
NSW Maritime (AA491791)

Aus 204 [1351/2009]

Delete	lit raft	33° 35'.96 S	151° 15'.00 E
--------	----------	--------------	---------------

Aus 217 [1307/2009]

Delete	lit raft	33° 35'.96 S	151° 15'.00 E
--------	----------	--------------	---------------

948* AUSTRALIA - TASMAN SEA - Lord Howe Island - Erscotts Passage - Contour

Australian Hydrographic Service (AA491620)

Aus 610 (plan, Lord Howe Island) [896/2010]

Insert	contour, between	31° 33'.046 S	159° 04'.109 E
		31° 33'.074 S	159° 04'.153 E
		31° 33'.094 S	159° 04'.161 E

Delete	contour, between	31° 33'.05 S	159° 04'.11 E
		31° 33'.09 S	159° 04'.16 E

949* AUSTRALIA - QUEENSLAND - Airlie Beach - Muddy Bay - Wreck

Former Notice - 565(T)/2010 is cancelled

Australian Hydrographic Service (AA492053), Maritime Safety Queensland Notice 421(T)/2010 (AA470869)

Aus 252 [31/2010]

Insert	stranded wreck	20° 15'.96 S	148° 43'.38 E
--------	----------------	--------------	---------------

Aus 253 [782/2010]

Insert	stranded wreck	20° 15'.96 S	148° 43'.38 E
--------	----------------	--------------	---------------

Aus 268 (plan, Airlie Beach) [901/2010]

Insert	stranded wreck	20° 15'.96 S	148° 43'.38 E
--------	----------------	--------------	---------------

950* PAPUA NEW GUINEA - St Georges Channel - Contours

Australian Hydrographic Service (AA491600, AA491604)

Aus 397 [732/2008]

Insert	accompanying block	5° 03'.0 S	152° 55'.0 E
--------	--------------------	------------	--------------

Aus 554 [414/2010]

Insert	accompanying block	5° 05'.0 S	152° 33'.8 E
--------	--------------------	------------	--------------

951* PAPUA NEW GUINEA - Bismarck Sea - Submarine cable

Australian Hydrographic Service (AA490992)

Aus 389 [944/2009]

Insert	disused submarine cable, between	1° 58'.6 S	143° 37'.6 E
		2° 09'.7 S	143° 35'.8 E
		2° 21'.1 S	143° 33'.1 E
		2° 45'.1 S	144° 00'.6 E
		2° 45'.7 S	144° 02'.7 E

952* AUSTRALIA - QUEENSLAND - Weipa - Light repositioned
Maritime Safety Queensland Notice 725/2010 (AA490420)

Aus 4 [294/2010]

Move	light	12° 40'.02 S	141° 50'.44 E
	to	12° 40'.015 S	141° 50'.457 E

Aus 4 (plan, Port of Weipa)

Move	light	12° 40'.02 S	141° 50'.44 E
	to	12° 40'.015 S	141° 50'.457 E

953* AUSTRALIA - WESTERN AUSTRALIA - Dampier - Mermaid Sound - Light buoy altered
Dampier Port Authority Notice 38/2010 (AA490750, AA492007, AA492008)

Aus 57 [596/2010]

Insert	special pillar light buoy, <i>Sea Buoy, Q(4)Y.6s, Racon (M), AIS</i> , without topmark	20° 25'.45 S	116° 42'.91 E
--------	--	--------------	---------------

Delete	light buoy with racon and AIS	20° 25'.44 S	116° 42'.95 E
--------	-------------------------------	--------------	---------------

Aus 58 [363/2010]

Insert	special pillar light buoy, <i>Sea Buoy, Q(4)Y.6s, Racon (M), AIS</i> , without topmark	20° 25'.45 S	116° 42'.91 E
--------	--	--------------	---------------

Delete	light buoy with racon and AIS	20° 25'.44 S	116° 42'.95 E
--------	-------------------------------	--------------	---------------

Aus 327 [363/2010]

Delete	light buoy	20° 25'.5 S	116° 43'.0 E
--------	------------	-------------	--------------

Aus 741 [595/2010]

Substitute	special pillar light buoy, <i>Q(4)Y.6s</i> without topmark for light buoy	20° 25'.4 S	116° 43'.0 E
------------	---	-------------	--------------

954* AUSTRALIA - WESTERN AUSTRALIA - Lancelin - Military exercise area
Australian Hydrographic Service (AA491806)

Aus 753 [484/2010]

Insert	firing practice area boundary, between	30° 50'.33 S	115° 13'.40 E
		30° 49'.32 S	115° 07'.84 E
	firing practice area boundary, between	31° 00'.83 S	115° 15'.08 E
		30° 56'.18 S	115° 17'.23 E
	firing practice area boundary, between	30° 53'.97 S	114° 56'.11 E
	31° 06'.00 S	115° 04'.07 E	

Delete	boundary between	31° 00'.8 S	115° 15'.1 E
		30° 55'.7 S	115° 23'.0 E
	boundary between	30° 49'.3 S	115° 07'.8 E
		30° 45'.5 S	115° 17'.5 E
		30° 53'.5 S	115° 23'.0 E
	boundary between	30° 54'.0 S	114° 56'.1 E
	31° 06'.0 S	115° 04'.0 E	

955* AUSTRALIA - WESTERN AUSTRALIA - Mindarie Keys to Mullaloo - Buoys established
 Department of Transport (AA473184, AA473185)

Aus 754 [597/2010]

Insert	special spar buoy, without topmark	31° 38'.93 S	115° 40'.18 E
	special spar buoy, without topmark	31° 38'.94 S	115° 40'.78 E
	special spar buoy, without topmark	31° 39'.33 S	115° 41'.05 E
	special spar buoy, without topmark	31° 39'.73 S	115° 40'.57 E
	special spar buoy, without topmark	31° 39'.74 S	115° 41'.18 E
	special spar buoy, without topmark	31° 40'.14 S	115° 41'.29 E
	special spar buoy, without topmark	31° 40'.54 S	115° 40'.98 E
	special spar buoy, without topmark	31° 40'.54 S	115° 41'.33 E
	special spar buoy, without topmark	31° 45'.37 S	115° 43'.47 E
	special spar buoy, without topmark	31° 45'.92 S	115° 43'.63 E
	special spar buoy, without topmark	31° 46'.53 S	115° 43'.81 E
	special spar buoy, without topmark	31° 47'.03 S	115° 43'.11 E
	special spar buoy, without topmark	31° 47'.11 S	115° 43'.80 E
	special spar buoy, without topmark	31° 47'.64 S	115° 43'.30 E
	special spar buoy, without topmark	31° 47'.68 S	115° 43'.81 E
	special spar buoy, without topmark	31° 48'.09 S	115° 43'.67 E
	special spar buoy, without topmark	31° 48'.19 S	115° 43'.46 E
	special spar buoy, without topmark	31° 48'.80 S	115° 43'.78 E
	special spar buoy, without topmark	31° 49'.20 S	115° 44'.06 E
Delete	depth, 3,m	31° 39'.6 S	115° 40'.5 E
	depth, 3,m	31° 39'.8 S	115° 41'.0 E

AX 0754E [597/2010]

Insert	special spar buoy, without topmark	31° 38'.93 S	115° 40'.18 E
	special spar buoy, without topmark	31° 38'.94 S	115° 40'.78 E
	special spar buoy, without topmark	31° 39'.33 S	115° 41'.05 E
	special spar buoy, without topmark	31° 39'.73 S	115° 40'.57 E
	special spar buoy, without topmark	31° 39'.74 S	115° 41'.18 E
	special spar buoy, without topmark	31° 40'.14 S	115° 41'.29 E
	special spar buoy, without topmark	31° 40'.54 S	115° 40'.98 E
	special spar buoy, without topmark	31° 40'.54 S	115° 41'.33 E
	special spar buoy, without topmark	31° 45'.37 S	115° 43'.47 E
	special spar buoy, without topmark	31° 45'.92 S	115° 43'.63 E
	special spar buoy, without topmark	31° 46'.53 S	115° 43'.81 E
	special spar buoy, without topmark	31° 47'.03 S	115° 43'.11 E
	special spar buoy, without topmark	31° 47'.11 S	115° 43'.80 E
	special spar buoy, without topmark	31° 47'.64 S	115° 43'.30 E
	special spar buoy, without topmark	31° 47'.68 S	115° 43'.81 E
	special spar buoy, without topmark	31° 48'.09 S	115° 43'.67 E
	special spar buoy, without topmark	31° 48'.19 S	115° 43'.46 E
	special spar buoy, without topmark	31° 48'.80 S	115° 43'.78 E
	special spar buoy, without topmark	31° 49'.20 S	115° 44'.06 E
Delete	depth, 3,m	31° 39'.6 S	115° 40'.5 E
	depth, 3,m	31° 39'.8 S	115° 41'.0 E

955* AUSTRALIA - WESTERN AUSTRALIA - Mindarie Keys to Mullaloo - Buoys established (continued)

AX 66002 [210/2010]

Insert	special spar buoy, without topmark	31° 38'.93 S	115° 40'.18 E
	special spar buoy, without topmark	31° 38'.94 S	115° 40'.78 E
	special spar buoy, without topmark	31° 39'.33 S	115° 41'.05 E
	special spar buoy, without topmark	31° 39'.73 S	115° 40'.57 E
	special spar buoy, without topmark	31° 39'.74 S	115° 41'.18 E
	special spar buoy, without topmark	31° 40'.14 S	115° 41'.29 E
	special spar buoy, without topmark	31° 40'.54 S	115° 40'.98 E
	special spar buoy, without topmark	31° 40'.54 S	115° 41'.33 E
	special spar buoy, without topmark	31° 45'.37 S	115° 43'.47 E
	special spar buoy, without topmark	31° 45'.92 S	115° 43'.63 E
	special spar buoy, without topmark	31° 46'.53 S	115° 43'.81 E
	special spar buoy, without topmark	31° 47'.03 S	115° 43'.11 E
	special spar buoy, without topmark	31° 47'.11 S	115° 43'.80 E
	special spar buoy, without topmark	31° 47'.64 S	115° 43'.30 E
	special spar buoy, without topmark	31° 47'.68 S	115° 43'.81 E
	special spar buoy, without topmark	31° 48'.09 S	115° 43'.67 E
	special spar buoy, without topmark	31° 48'.19 S	115° 43'.46 E
	special spar buoy, without topmark	31° 48'.80 S	115° 43'.78 E
	special spar buoy, without topmark	31° 49'.20 S	115° 44'.06 E
Delete	depth, 3,m	31° 39'.6 S	115° 40'.5 E
	depth, 3,m	31° 39'.8 S	115° 41'.0 E

956* AUSTRALIA - TASMANIA - Little Oyster Cove - Infrastructure

Former Notice - 88(T)/2010 is cancelled

D Davey (AA491279, AA491280)

Aus 171 [749/2010]

Insert	continuous line, between	43° 07'.55 S	147° 14'.96 E
		43° 07'.55 S	147° 15'.06 E
		43° 07'.64 S	147° 15'.07 E

Aus 173 [749/2010]

Insert	continuous line, between	43° 07'.55 S	147° 14'.96 E
		43° 07'.55 S	147° 15'.06 E
		43° 07'.64 S	147° 15'.07 E

Delete	continuous line, between	43° 07'.5 S	147° 15'.0 E
		43° 07'.6 S	147° 15'.0 E

Aus 173 (plan, Little Oyster Cove)

Insert	accompanying block	43° 07'.4 S	147° 15'.1 E
--------	--------------------	-------------	--------------

957* AUSTRALIA - TASMANIA - River Derwent - Hobart - Depths

Former Notice - 522(T)/2009 is cancelled
HydroSurvey Australia (DHDB 1553037)

Aus 172 [551/2010]

Insert	depth, 6 ₆ m	42° 52'.113 S	147° 20'.527 E
	depth, 11 ₈ m	42° 52'.975 S	147° 20'.315 E
Delete	depth, 6 ₉ m	42° 52'.11 S	147° 20'.54 E
	depth, 12 ₆ m	42° 52'.96 S	147° 20'.39 E

Aus 172 (plan, Sullivans Cove)

Insert	depth, 11 ₈ m	42° 52'.975 S	147° 20'.315 E
Delete	depth, 13 ₇ m	42° 52'.98 S	147° 20'.34 E

958* AUSTRALIA - TASMANIA - Spring Bay - Depths

Former Notice - 460(T)/2009 is cancelled
3D-Marine Mapping (DHDB 55996), HydroSurvey Australia (DHDB 1552937)

Aus 175 [1136/2008]

Insert	depth, 1 ₇ m, enclosed by contour	42° 32'.363 S	147° 55'.378 E
Delete	depth, 2 ₈ m	42° 32'.38 S	147° 55'.40 E
	depth, 15m, and enclosing contour	42° 32'.97 S	147° 55'.67 E

959* AUSTRALIA - VICTORIA - Western Port - Maintained depths

Patrick Ports Hastings (AA492037)

Aus 150 [846/2010]

Amend	maintained depth to 9.0m	38° 18'.0 S	145° 13'.9 E
	maintained depth to 14.2m	38° 20'.5 S	145° 14'.1 E
	maintained depth to 14.2m	38° 24'.7 S	145° 14'.5 E
	maintained depth to 14.8m	38° 26'.2 S	145° 12'.4 E

Aus 151 [NE 4/6/2010]

Amend	maintained depth to 9.0m	38° 17'.95 S	145° 13'.88 E
	maintained depth to 14.2m	38° 19'.83 S	145° 14'.10 E
	maintained depth to 12.7m	38° 21'.34 S	145° 13'.81 E
	maintained depth to 14.2m	38° 23'.75 S	145° 14'.76 E
	maintained depth to 14.8m	38° 26'.44 S	145° 11'.79 E

Aus 152 (plan, Crib Point Oil Terminal Jetty) [NE 4/6/2010]

Amend	maintained depth to 15.7m	38° 21'.01 S	145° 13'.58 E
	maintained depth to 14.2m	38° 21'.09 S	145° 13'.90 E
	maintained depth to 12.7m	38° 21'.38 S	145° 13'.88 E

Aus 152 (plan, Hanns Inlet)

Amend	maintained depth to 14.2m	38° 22'.03 S	145° 14'.34 E
-------	---------------------------	--------------	---------------

Aus152 (plan, Hastings Bight)

Amend	maintained depth to 12.0m	38° 17'.43 S	145° 13'.80 E
	maintained depth to 12.0m	38° 17'.60 S	145° 13'.74 E
	maintained depth to 9.0m	38° 17'.59 S	145° 13'.92 E
	maintained depth to 9.0m	38° 18'.16 S	145° 14'.00 E
	maintained depth to 15.7m	38° 18'.38 S	145° 13'.77 E
	maintained depth to 14.2m	38° 18'.65 S	145° 13'.95 E
	maintained depth to 14.2m	38° 19'.82 S	145° 14'.10 E

960* AUSTRALIA - VICTORIA - Western Port - Rutherford Inlet - Beacons repositioned
Australian Hydrographic Service (AA334855, AA490028)

Aus 152 (plan, Rutherford Inlet) [959/2010]

Move	beacon	38° 13'.45 S	145° 18'.17 E
	to	38° 13'.459 S	145° 18'.173 E
	beacon	38° 13'.53 S	145° 18'.13 E
	to	38° 13'.533 S	145° 18'.125 E

961(T)/2010 AUSTRALIA - NEW SOUTH WALES - Georges River - Light beacon re-established

Former Notice - 1438(T)/2009 is cancelled
NSW Maritime (AA491790)

Cancel this notice on receipt.

Chart formerly affected - Aus 198 - AU5198X9**962(T)/2010 AUSTRALIA - NEW SOUTH WALES - Port Jackson - Homebush Bay - Scientific instruments; silt curtain removed**

Former Notice - 1439(T)/2009 is cancelled
Thiess Services Pty Ltd (AA493326)

Cancel this notice on receipt.

Chart formerly affected - Aus 200 - Aus 203 - AU5X200W**963(T)/2010 AUSTRALIA - QUEENSLAND - Southport - Dredging operations**

Former Notice - 849(T)/2010 is cancelled
Date - Until 31 March 2011
Maritime Safety Queensland Notice 662(T)/2010, 776(T)/2010 (AA484802, AA493415)

The dredge *Port Frederick* and *Faucon* are conducting dredging operations in the West Crab Island Channel (27° 54'.2 S 153° 24'.5 E).

The dredge will transport the spoil close to shore off South Stradbroke Island and Surfers Paradise.

The dredges will monitor VHF Ch 16 and Ch 67.

The west cardinal light beacon (27° 54'.89 S 153° 24'.71 E) has been removed and a west cardinal light buoy, Q(9)15s, has been established in position 27° 54'.90 S 153° 24'.73 E.

Mariners are advised to navigate with caution in the area.

Chart temporarily affected - Aus 230**964(T)/2010 AUSTRALIA - QUEENSLAND - Flinders Reef - Mooring maintenance completed**

Former Notice - 850(T)/2010 is cancelled
Maritime Safety Queensland Notice 650(T)/2010 (AA484382)

Cancel this notice on receipt.

Chart formerly affected - Aus 235 - Aus 236 - AU427153**965(T)/2010 AUSTRALIA - QUEENSLAND - Brisbane River - Shoaling**

Maritime Safety Queensland Notice 760(T)/2010 (AA493156)

Shoaling, with least depth 8.4m, exists in the vicinity of 27° 26'.74 S 153° 06'.15 E.

Mariners are advised to navigate with caution in the area.

Chart temporarily affected - Aus 238 - AU5237X8

966(T)/2010 AUSTRALIA - QUEENSLAND - Moreton Bay - Bramble Bay - Bridge construction*Former Notice* - 380(T)/2009 is cancelled*Date* - Until 30 June 2011

Maritime Safety Queensland Notice 171(T)/2008, 164(T)/2009, 166(T)/2009, 756(T)/2010 (AA323151, AA395818, AA396377, AA492668)

Construction of the Houghton Highway Bridge is in progress in position 27° 17'.01 S 153° 03'.89 E (WGS84 datum).

A falsework bridge exists to the east of the existing bridge. The seaward limit of the falsework bridge will be marked by lights, Q. Y.

Nav aids exist as follows:

<i>Position</i>	<i>Remarks</i>
27° 15'.84 S 153° 04'.62 E	port beacon
27° 15'.95 S 153° 04'.75 E	starboard buoy
27° 15'.97 S 153° 04'.74 E	port buoy
27° 16'.56 S 153° 04'.29 E	lit starboard buoy, <i>Fl.G.2.5s</i>
27° 16'.60 S 153° 04'.26 E	lit port buoy, <i>Fl.R.2.5s</i>
27° 16'.57 S 153° 04'.11 E	lit starboard buoy, <i>Fl.G.2.5s</i>
27° 16'.59 S 153° 04'.09 E	lit port buoy, <i>Fl.R.2.5s</i>

Piles marked by flashing yellow lights exist adjacent to the channel in position 27° 15'.82 S 153° 04'.70 E.

Mariners should navigate with caution in the area.

Chart temporarily affected - Aus 236**967(T)/2010 AUSTRALIA - QUEENSLAND - Caloundra - Harbour works***Date* - Until 16 November 2010

Maritime Safety Queensland Notice 767(T)/2010 (AA493131)

Works associated with the construction of revetment walls and rock groynes are in progress (26° 48'.45 S 153° 07'.46 E).

Mariners are advised to navigate with caution in the area.

Chart temporarily affected - Aus 235 - AU427153**968(T)/2010 AUSTRALIA - QUEENSLAND - Bundaberg - Depth information***Former Notice* - 852(T)/2010 is cancelled

Maritime Safety Queensland Notice 739(T)/2010 (AA491147)

Available depths as at 27 August 2010:

	<i>Metres</i>
Sea Reach	9.4
Middle Reach	9.0
Inner Reach	9.0
Swing Basin	7.4
Oil Berth	8.6
* BST Berth	10.0

The deep draught departure channel from the BST berth to Middle Reach has a depth of 9.0m.

* Indicates revised entry.

Chart temporarily affected - Aus 242 - Aus 243

969(T)/2010 AUSTRALIA - QUEENSLAND - Shoalwater Bay - Live firing*Date - Until 24 November 2010*

Maritime Safety Queensland Notice 727(T)/2010 (AA490670)

Live firing activities will be conducted in the Shoalwater Bay training area during the period 26 September to 16 October 2010 and 2 November to 8 November 2010 within Marine Danger Area 1 and in Marine Danger Area 2 for the duration.

A marine danger area extends to all internal waters bounded by the following positions (WGS84 datum):

Marine Danger Area 1

22° 21'.20 S 150° 10'.52 E
 22° 20'.35 S 150° 12'.00 E
 22° 16'.94 S 150° 12'.07 E
 22° 14'.92 S 150° 20'.06 E
 22° 14'.76 S 150° 20'.31 E
 22° 09'.00 S 150° 25'.00 E
 22° 09'.00 S 150° 37'.00 E
 22° 14'.38 S 150° 37'.00 E
 22° 19'.92 S 150° 45'.05 E
 22° 29'.13 S 150° 49'.71 E
 22° 31'.09 S 150° 43'.53 E
 22° 18'.98 S 150° 35'.98 E
 22° 21'.20 S 150° 10'.52 E.

Marine Danger Area 2

22° 21'.20 S 150° 10'.52 E
 22° 18'.98 S 150° 35'.98 E
 22° 31'.09 S 150° 43'.53 E
 22° 40'.00 S 150° 38'.00 E
 22° 21'.20 S 150° 10'.52 E.

All waters, creeks, beaches and other areas within the declared marine danger area are not available for access.

Mariners are advised to keep clear of this area throughout the above times.

Chart temporarily affected - Aus 248 - Aus 260 - Aus 261 - Aus 367 - Aus 820 - Aus 822 - AX 0260E - AX 0367E - AX 0820E - AX 0822E - AX 60260 - AX 67248 - AX 67261 - AU423150 - AU5261P1 - AU5261P2 - AU5XX248

970(T)/2010 AUSTRALIA - QUEENSLAND - Cairns - Dredging operations*Date - Until 23 September 2010*

Maritime Safety Queensland Notice 779(T)/2010 (AA493426)

The dredge *Brisbane* is conducting dredging operations in the inner and outer channels.

Cairns VTS can be contacted on VHF Ch 12 and Ch 16.

Mariners are advised to navigate with caution in the area.

Chart temporarily affected - Aus 262 - Aus 263 - AX 63262 - AU5262X4

971(T)/2010 AUSTRALIA - QUEENSLAND - Double Island - Scientific instrument*Former Notice - 726(T)/2009 is cancelled*

Maritime Safety Queensland Notice 738(T)/2010 (AA491149)

Special light buoy, *Fl(5)Y.20s*, exist in position 16° 44'.06 S 145° 42'.60 E

Mariners are not to use these buoys as moorings.

Chart temporarily affected - Aus 830

972(T)/2010 PAPUA NEW GUINEA - Caution Bay - Drilling operations*Date* - Until 19 November 2010

National Maritime Safety Authority Notice 34/2010 (AA493389)

The drill rig *C-53 Combifloat* is conducting operations in an area bounded by the following positions:

9° 20'.62 S 146° 59'.28 E

9° 20'.22 S 146° 58'.99 E

9° 20'.07 S 147° 00'.06 E

9° 20'.40 S 147° 00'.06 E.

A 200m exclusion zone exists around the platform during the works.

Chart temporarily affected - Aus 379 - AU410146**973(T)/2010 AUSTRALIA - QUEENSLAND - Weipa - Dredging operations completed***Former Notice* - 810(T)/2010 is cancelled

Maritime Safety Queensland Notice 740(T)/2010 (AA491143)

Cancel this notice on receipt.

Chart formerly affected - Aus 4 - AU5XX4P1**974(T)/2010 AUSTRALIA - NORTHERN TERRITORY - Evans Shoal to Lorna Shoal - Scientific instruments recovered***Former Notice* - 860(T)/2010 is cancelledRV *Solander* (AA481748)

Cancel this notice on receipt.

Chart formerly affected - Aus 309 - Aus 310 - Aus 316 - Aus 722 - AX 0309F - AX 0310F - AX 72309 - AX 72722 - AU411129 - AU412129 - AU413129**975(T)/2010 AUSTRALIA - WESTERN AUSTRALIA - Woodbine Bank to Johnson Bank - Seismic survey***Date* - Until 27 September 2010

Fugro Multi Client Services Pty Ltd (AA493386)

Special purpose vessel *Geo Natuna* is conducting a survey in the area bounded by the following positions:

12° 29'.94 S 123° 25'.33 E

12° 23'.30 S 123° 17'.64 E

12° 16'.50 S 123° 18'.09 E

12° 09'.13 S 123° 25'.33 E

12° 17'.55 S 123° 35'.63 E

12° 19'.14 S 123° 35'.71 E.

Chart temporarily affected - Aus 314 - Aus 317 - Aus 319 - AX 0314F - AX 0317F - AX 0319F - AU313123**976(T)/2010 AUSTRALIA - WESTERN AUSTRALIA - James Price Point - Mooring buoy***Date* - Until 1 November 2010

P Slape (AA493379)

A mooring buoy exists in position 17° 31'.34S 122° 07'.91E.

Chart temporarily affected - Aus 324 - AU418122

977(T)/2010 AUSTRALIA - WESTERN AUSTRALIA - Broome - Scientific instruments*Date* - Until 30 September 2011

Broome Port Authority Notice 15/2010 (AA493353)

Scientific instruments marked by special light buoys, *Fl.Y*, exist in the vicinity of 18° 00'.05 S 122° 12'.92 E**Chart temporarily affected - Aus 51****978(T)/2010 AUSTRALIA - TASMANIA - River Derwent - Hobart - Buoy established***Former Notice* - 795(T)/2009 is cancelled

Bellerive Yacht Club (AA443788)

Cancel this notice on receipt.

Chart formerly affected - Aus 171**979(T)/2010 AUSTRALIA - TASMANIA - Port Dalrymple - Beauty Point - Harbour works completed***Former Notice* - 818(T)/2010 is cancelled

Marine and Safety Tasmania (AA493095)

Cancel this notice on receipt.

Chart formerly affected - Aus 167 - AU5167X8**980(T)/2010 AUSTRALIA - VICTORIA - Barwon River - Submarine pipeline***Date* - Until 31 October 2010

Victorian Notice 85(T)/2010 (AA493149, AA493467, AA493468)

A submarine pipeline is being laid across the Barwon River between 38° 16'.52 S 144° 29'.80 E and 38° 16'.59 S 144° 30'.10 E.

A navigation channel over the pipeline will be marked by light buoys. The length of the pipeline will be marked by special light buoys. The water depth over the pipeline will be reduced to *0.4m* (LAT).

Further information can be obtained by contacting Barwon Water on 1300 656 007 and Port of Barwon Heads on (03) 5254 1118.

Mariners are advised to navigate with caution in the area.

Chart temporarily affected - Aus 143 - AU439144**981(P)/2010 AUSTRALIA - VICTORIA - Port Phillip - Point Richards - Navaids to be established***Date* - On or about 13 September 2010

Victorian Notice 83(T)/2010 (AA492688)

Light beacons will be established as follows:

<i>Positions</i>	<i>Remarks</i>
38° 06'.53 S 144° 37'.76E	starboard lateral light beacon, <i>Fl.G.2s</i> ,
38° 06'.50 S 144° 37'.63E	port lateral light beacon, <i>Fl.R.2s</i> ,

Chart which will be affected - Aus 157 - AU439144**982(T)/2010 AUSTRALIA - VICTORIA - Port Phillip - Patterson River - Shoaling removed***Former Notice* - 887(T)/2010 is cancelled

Victorian Notice 86(T)/2010 (AA493346)

Cancel this notice on receipt.

Chart formerly affected - Aus 143 - AU439145 - AU5143P1

983(T)/2010 AUSTRALIA - VICTORIA - Port Phillip - Mornington - Harbour works

Date - Until 17 December 2010

Victorian Notice 84(T)/2010 (AA492656)

Works associated with the reconstruction of Mornington Pier are in progress (38° 12'.73 S 145° 02'.02 E).

All hazards to navigation will display appropriate lights and symbols.

Mariners are advised to navigate with caution in the area.

Chart temporarily affected - Aus 143 - Aus 158 - AU5143P3

984(T)/2010 AUSTRALIA - VICTORIA - Port Phillip - Blairgowrie - Dredging operations; beach renourishment completed

Former Notice - 732(T)/2010 is cancelled

Victorian Notice 67(T)/2010 (AA476738)

Cancel this notice on receipt.

Chart formerly affected - Aus 143 - Aus 158 - AU439144 - AU5143P2

HYDROGRAPHIC REPORTS

<i>Locality</i>	<i>Report</i>	<i>Ship/Authority</i>	<i>Observer</i>
NSW- Crookhaven Head	Shoal		K King
QLD- Eden Reef	Light sector	HMAS <i>Collins</i>	

NAVIGATION WARNINGS

The following radio messages have been received during the period to 10 September 2010. Signal copies of these messages may be destroyed. It is recommended that the reprint of Navigational Warnings should be kept in a file or a book divided into areas. Cancellation should be made on receipt of signals and reprints.

Rigs on location other than those listed in the latest Section III summary are the subject of Radio Navigational Warnings. Rigs in transit will not be the subject of Warnings.

AUSCOAST WARNING

- 191 Cancelled.
- 192 Cancelled.
- 193 Cancelled.
- 194 Cancelled.
- 195 Cancelled.
- 196 Cancelled.
- 197 Special purpose vessel *Geo Atlantic* conducting seismic survey in area bounded by 20° 24'·0 S to 21° 40'·0 S and 112° 10'·0 E to 115° 12'·0 E. 6M clearance requested.
- 198 Drill rig *Songa Venus* in position 13° 40'·46 S 123° 20'·63 E. 2.5M clearance requested.
- 199 Drill rig *Ensco 109* (formally known as *Ocean Shield*) in position 20° 07'·71 S 116° 26'·05 E. 2.5M clearance requested.
- 200 Cancelled.
- 201 Cancelled.
- 202 Cancelled.
- 203 Cancelled.
- 204 Cancelled.
- 205 Cancelled.
- 206 Caldbeck Reef light K3282 (10° 06'·40 S 143° 09'·90 E) unreliable.
- 207 Cancelled.
- 208 Cancelled.
- 209 Cancelled.
- 210 Cancelled.
- 211 Special purpose vessel *Geo Natuna* conducting underwater operations in area bounded by 12° 00'·0 S to 12° 45'·0 S and 123° 05'·0 E to 123° 45'·0 E. 7M clearance requested.
- 212 Cancelled.
- 213 Robin Reef light K3235 in position 12° 52'·67 S 143° 41'·78 E reduced power.
- 214 Cancelled.
- 215 Drill rig *Jack Bates* in position 20° 15'·57 S 113° 41'·21 E. 2.5M clearance requested.
- 216 Cancelled.
- 217 Cancelled.
- 218 Goods Island light K3270 (10° 33'·65 S 142° 09'·22 E) unreliable.

NAVAREA X WARNINGS

- 008 As previously notified by NAVAREA warning, mariners using ECDIS are advised not to rely solely on automated voyage planning and monitoring checks and alarms. It is recommended that mariners undertake careful visual inspection of the entire planned route to confirm that it, and any deviations from it, is clear of dangers. The ECDIS display should be configured to display all soundings during this inspection.

Particular care should be taken when planned routes cross areas where only small scale ENC's (Usage Bands 1 and 2) are available. In some display configurations, such as when no names are shown, small islands and other point features may be difficult to identify or could be obscured by surrounding depth contours. Some ECDIS systems appear only to undertake route check functions on larger scale ENC's and therefore alarms might not activate. This may not be clearly indicated on the ECDIS display.

The International Hydrographic Organization (IHO) is leading technical action to investigate these matters in consultation with ECDIS equipment manufacturers. Further information will be made available through Notices to Mariners.

Navigational warnings in force as at 100001UTC SEP 10.**Auscoast**

111 181 188 197 198 199 206 213 215 218

Navarea X

008

Summary of mobile drilling rigs as at 100001UTC SEP 10.

<i>Name</i>	<i>Position</i>
Songa Venus	13° 40'.46 S 123° 20'.63 E
Ensco 109	20° 07'.71 S 116° 26'.05 E
Stena Clyde	20° 03'.70 S 115° 11'.00 E
Ocean America	19° 24'.13 S 114° 14'.59 E
Ocean Epoch	21° 34'.02 S 114° 10'.08 E
Atwood Eagle	21° 28'.11 S 113° 50'.47 E
Jack Bates	20° 15'.57 S 113° 41'.21 E
Ocean Patriot	38° 10'.86 S 148° 35'.58 E

NAVAREA XIV WARNINGS

026 Cancelled.

027 As previously notified by NAVAREA warning, mariners using ECDIS are advised not to rely solely on automated voyage planning and monitoring checks and alarms. It is recommended that mariners undertake careful visual inspection of the entire planned route to confirm that it, and any deviations from it, is clear of dangers. The ECDIS display should be configured to display all soundings during this inspection.

Particular care should be taken when planned routes cross areas where only small scale ENC's (Usage Bands 1 and 2) are available. In some display configurations, such as when no names are shown, small islands and other point features may be difficult to identify or could be obscured by surrounding depth contours. Some ECDIS systems appear only to undertake route check functions on larger scale ENC's and therefore alarms might not activate. This may not be clearly indicated on the ECDIS display.

The International Hydrographic Organization (IHO) is leading technical action to investigate these matters in consultation with ECDIS equipment manufacturers. Further information will be made available through Notices to Mariners.

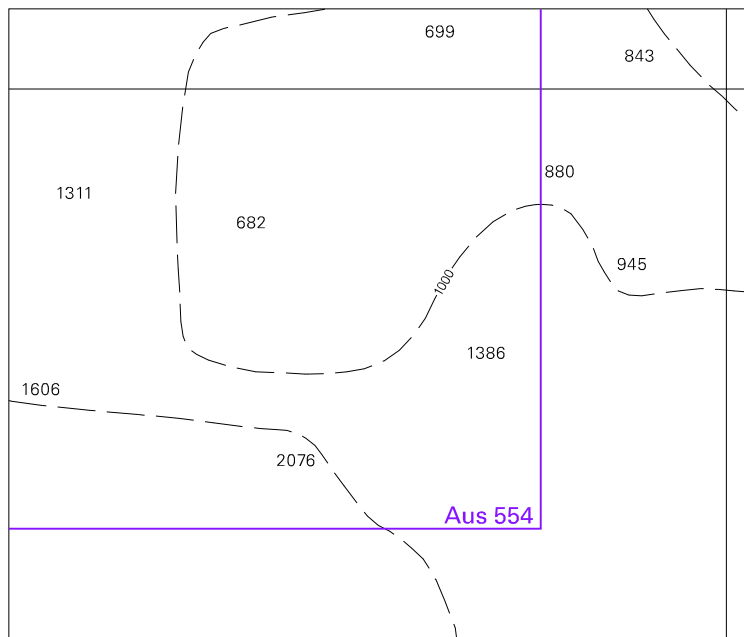
028 Cancelled.

029 Cancelled.

Navarea XIV warnings in force as at 100001UTC SEP 10.

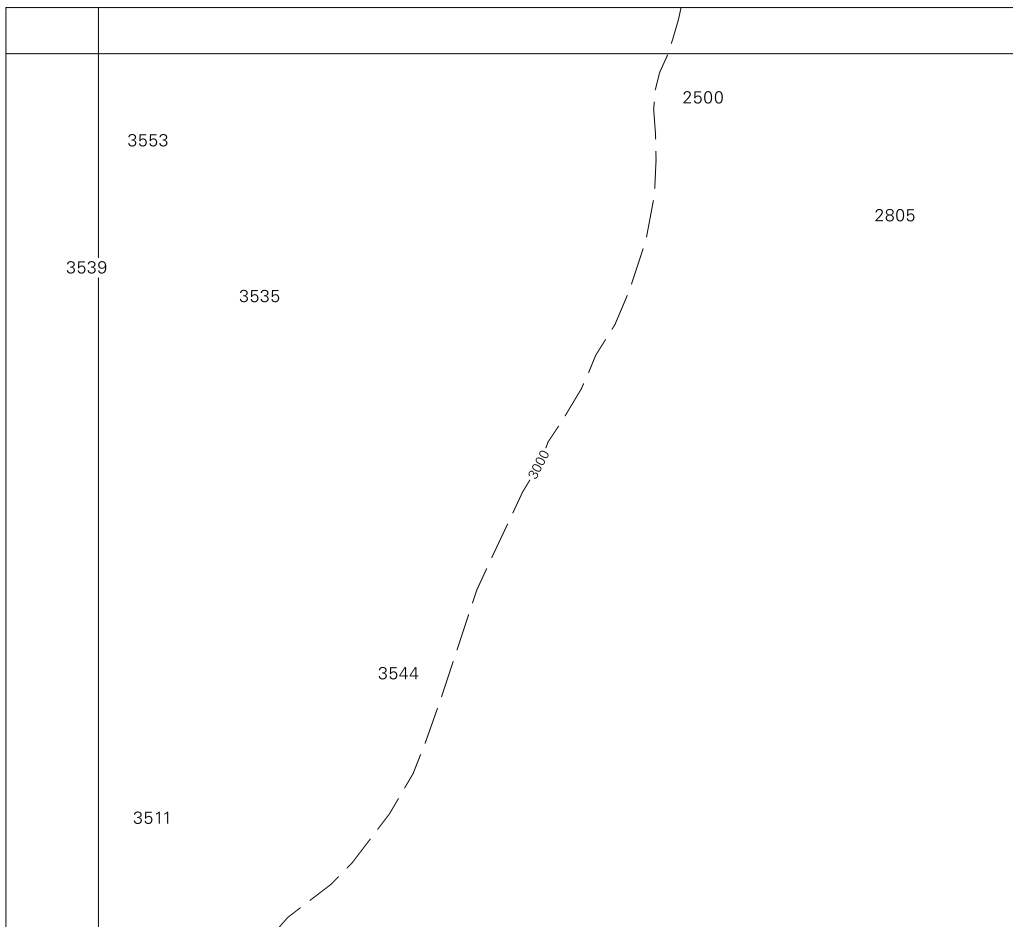
019 022 023 027

To accompany Australian Notice to Mariners 950/2010



Block for chart Aus 397 © Commonwealth of Australia 2010 (98.4 x 83.4mm)

To accompany Australian Notice to Mariners 950/2010

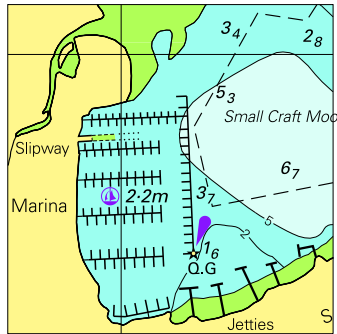


Block for chart Aus 554

© Commonwealth of Australia 2010

(135.6 x 122.0mm)

To accompany Australian Notice to Mariners 956/2010



© Commonwealth of Australia 2010

Block for chart Aus173 (43-0x43-5mm)