



27 August 2010

Edition 17

Australian Notices to Mariners are the authority for correcting Australian Charts and Publications

AUSTRALIAN NOTICES TO MARINERS

Notices 888 – 944 

Published fortnightly by the Australian Hydrographic Service

Commodore R. NAIRN RAN
Hydrographer of Australia

SECTIONS.

- I. **Australian Notices to Mariners, including blocks and notes.**
- II. **Hydrographic Reports.**
- III. **Navigational Warnings.**

SUPPLEMENTS.

- I. **Tracings**
- II. **Cumulative List of Australian Notices to Mariners.**
- III. **Temporary and Preliminary Notices in force.**
- IV. **Amendments to Admiralty List of Lights and Fog Signals (Vol K),
Radio Signals (NP 281(2), 282, 283(2), 285, 286(4)) and Sailing
Directions (NP 9, 13, 14, 15, 33, 34, 35, 36, 39, 44, 51, 60, 61, 62, 100, 136).**

© Commonwealth of Australia 2010

This work is copyright. Apart from any use permitted under the Copyright Act 1968, no part may be reproduced by any process, adapted, communicated or commercially exploited without prior written permission from The Commonwealth represented by the Australian Hydrographic Service.

IMPORTANT NOTICE

This edition of Notices to Mariners includes all significant information affecting AHS products which the AHS has become aware of since the last edition. All reasonable efforts have been made to ensure the accuracy and completeness of the information, including third party information, on which these updates are based. The AHS regards third parties from which it receives information as reliable, however the AHS cannot verify all such information and errors may therefore exist. The AHS does not accept liability for errors in third party information.

GENERAL INSTRUCTIONS

The substance of these notices should be inserted on the charts affected.

Bearings are referred to the true compass and are reckoned clockwise from North; those relating to lights are given as seen by an observer from seaward. Positions quoted in permanent notices relate to the horizontal datum for the chart(s). When preliminary or temporary notices affect multiple charts, positions will be provided in relation to only one horizontal datum and that datum will be specified. When the multiple charts do not have a common horizontal datum, mariners will be required to adjust the position(s) for those charts not on the specified datum. The range quoted for a light is its nominal range. Depths are with reference to the chart datum of each chart. Heights are above mean high water springs or mean higher high water, as appropriate.

The capital letter (P) or (T) after the number of any notice denotes a preliminary or temporary notice respectively, which are contained separately at the end of the permanent notices. A star (*) adjacent to the number of a notice indicates that the notice is based on original information.

REPORTING OF DANGERS

Mariners are particularly requested to notify the AUSTRALIAN HYDROGRAPHIC SERVICE, Locked Bag 8801 Wollongong, NSW 2500 (Fax 02-4223 6599, e-mail Hydro.NTM@defence.gov.au or, alternatively by filling in and submitting the [Hydrographic Notes](#) forms located on the web site – www.hydro.gov.au), immediately on the discovery of new dangers or suspected dangers to navigation. For changes or defects in aids to navigation notify AusSAR (Fax 02-6230 6868 or email rccaus@amsa.gov.au).

AUTHORISED USE

Copies of Australian notices are available free of charge from the Australian Hydrographic Service (AHS) website (www.hydro.gov.au) and through the eNotices (email) service (www.hydro.gov.au/enotices/enotices.htm).

Individual Notices may be copied for the purpose of inserting Notice substance on official charts and publications. Paper copies may be printed by chart agents and distributed to customers on a cost recovery basis. Participating chart agents are listed on the AHS website as providing a 'Paper Notices to Mariners' service (www.hydro.gov.au/prodserv/distributors/distributors.htm). Copies of the notices may not be sold for profit without prior written agreement.

NUMERICAL INDEX OF NOTICES TO MARINERS

Edition No 17

Notices	Aus Chart, INT Chart, ENC Cell, AHP
888.....	Aus 51, 324, 331, 414, 415, 416, 417, 4723, 4725
889.....	Amendment to Australian Notice to Mariners No 2
890.....	Aus 199
891.....	Aus 198
892.....	Aus 200, 203
893.....	Aus 809, AX 0809E
894.....	Aus 207, 208
895.....	Aus 489
896.....	Aus 610
897.....	Aus 236
898.....	Aus 238
899.....	Aus 245, 246, 366, 819, 820, AX 0820E
900.....	Aus 268
901.....	Aus 268, 825, 826
902.....	Aus 826, 827
903.....	Aus 386, 387, 673
904.....	Aus 294, 301, 376, 700
905.....	Aus 13, 14, 305
906.....	Aus 309, 310, 4721, INT 721, AX 0309F, 0310F, 4721F, 72309
907.....	Aus 26, AX 72026
908.....	Aus 415, 4722, INT 722, AX 0415F, 4722F
909.....	Aus 744
910.....	Aus 745
911.....	Aus 114, 117, AX 70117
912.....	Aus 109
913.....	Aus 776, AX 0776E
914.....	Aus 139
915.....	Aus 140, 348
916.....	Aus 487
917(T).....	Aus 194
918(T).....	Aus 195, 808, AX 0808E
919(T).....	Aus 207, 208, 809, AX 0809E
920(T).....	Aus 236, AU5237X8
921(T).....	Aus 238, AU5237X8
922(T).....	Aus 242
923(T).....	Aus 245, AU5244X5
924(T).....	Aus 245, AU5244X5
925(T).....	Aus 822, 823, AX 0822E, 0823E, AU322150
926(T).....	Aus 249, 250, AX 0249E, AU422149, 5250P2
927(T).....	Aus 250, AU5250P2
928(T).....	Aus 270, AU5270P1
929(T).....	Aus 270
930(T).....	Aus 4621, INT 621, AX 4621F, AU220150
931(T).....	Aus 293, 299
932(T).....	Aus 4, 701, AU413141
933(T).....	Aus 50
934(T).....	Aus 50, 324
935(T).....	Aus 58, 59
936(T).....	Aus 59, AU5XXX58
937(T).....	Aus 58, 59, AU5XXX58
938(T).....	Aus 64, 743, 744
939(T).....	Aus 112, 113, 117, AX 63112, 70117, AU5XX113
940(T).....	Aus 173, 795, AU444147
941(T).....	Aus 157, AU439144
942(T).....	Aus 153, 157
943(T).....	Aus 155
944(T).....	Aus 155, AU438144

NUMERICAL INDEX OF CHARTS AFFECTED

Edition No 17

Aus Chart	Notices	Aus Chart	Notices
Aus 4.....	932(T)	Aus 700	904
Aus 13.....	905	Aus 701	932(T)
Aus 14.....	905	Aus 743	938(T)
Aus 26.....	907	Aus 744	909, 938(T)
Aus 50.....	933(T), 934(T)	Aus 745	910
Aus 51.....	888	Aus 776	913
Aus 58.....	935(T), 937(T)	Aus 795	940(T)
Aus 59.....	935(T), 936(T), 937(T)	Aus 808	918(T)
Aus 64.....	938(T)	Aus 809	893, 919(T)
Aus 109.....	912	Aus 819	899
Aus 112.....	939(T)	Aus 820	899
Aus 113.....	939(T)	Aus 822	925(T)
Aus 114.....	911	Aus 823	925(T)
Aus 117.....	911, 939(T)	Aus 825	901
Aus 139.....	914	Aus 826	901, 902
Aus 140.....	915	Aus 827	902
Aus 153.....	942(T)	Aus 4621	930(T)
Aus 155.....	943(T), 944(T)	Aus 4721	906
Aus 157.....	941(T), 942(T)	Aus 4722	908
Aus 173.....	940(T)	Aus 4723	888
Aus 194.....	917(T)	Aus 4725	888
Aus 195.....	918(T)	AX 0249E	926(T)
Aus 198.....	891	AX 0309F.....	906
Aus 199.....	890	AX 0310F.....	906
Aus 200.....	892	AX 0415F.....	908
Aus 203.....	892	AX 0776E	913
Aus 207.....	894, 919(T)	AX 0808E	918(T)
Aus 208.....	894, 919(T)	AX 0809E	893, 919(T)
Aus 236.....	897, 920(T)	AX 0820E	899
Aus 238.....	898, 921(T)	AX 0822E	925(T)
Aus 242.....	922(T)	AX 0823E	925(T)
Aus 245.....	899, 923(T), 924(T)	AX 4621F.....	930(T)
Aus 246.....	899	AX 4721F.....	906
Aus 249.....	926(T)	AX 4722F.....	908
Aus 250.....	926(T), 927(T)	AX 63112.....	939(T)
Aus 268.....	900, 901	AX 70117.....	911, 939(T)
Aus 270.....	928(T), 929(T)	AX 72026.....	907
Aus 293.....	931(T)	AX 72309.....	906
Aus 294.....	904		
Aus 299.....	931(T)	INT Chart	Notices
Aus 301.....	904	INT 621	930(T)
Aus 305.....	905	INT 721	906
Aus 309.....	906	INT 722.....	908
Aus 310.....	906		
Aus 324.....	888, 934(T)	ENC Cell	Notices
Aus 331.....	888	AU220150.....	930(T)
Aus 348.....	915	AU322150.....	925(T)
Aus 366.....	899	AU413141.....	932(T)
Aus 376.....	904	AU422149.....	926(T)
Aus 386.....	903	AU438144.....	944(T)
Aus 387.....	903	AU439144.....	941(T)
Aus 414.....	888	AU444147.....	940(T)
Aus 415.....	888, 908	AU5237X8	920(T), 921(T)
Aus 416.....	888	AU5244X5	923(T), 924(T)
Aus 417.....	888	AU5250P2	926(T), 927(T)
Aus 487.....	916	AU5270P1	928(T)
Aus 489.....	895	AU5XX113.....	939(T)
Aus 610.....	896	AU5XXX58	936(T), 937(T)
Aus 673.....	903		

888 AUSTRALIA - Product

Australian Hydrographic Service (AA480137, AA484936, AA486596)

New Chart

<i>Chart</i>	<i>Published</i>	<i>Title and description of amendments</i>	<i>Scale</i>	<i>Index Chart</i>	<i>Price</i>
Aus 324	27/8/2010	Australia - North West Coast - Western Australia - Lacepede Islands to Eighty Mile Beach 16° 46'·0 S - 20° 00'·0 S 120° 24'·5 E - 122° 23'·0 E <i>New metric chart referred to WGS84 datum and LAT, and updated for maritime boundaries.</i>	1:300 000	Aus 5000	\$35.00
Aus 331	16/7/2010	Australia - West Coast - Western Australia - Point Quobba to Pepper Point 24° 10'·0 S - 27° 00'·0 S 112° 18'·5 E - 114° 17'·0 E <i>New metric chart referred to WGS84 datum and LAT, and updated for maritime boundaries.</i>	1:300 000	Aus 5001	\$35.00

New Chart to be published shortly

<i>Chart</i>	<i>Title</i>	<i>Scale</i>	<i>Expected Publication Date</i>	<i>Expected Stock Availability</i>
Aus 4723	Australia - North West Coast - Java to North West Cape	1:1 500 000	27 August 2010	4 October 2010
Aus 4725	Australia - West Coast - North West Cape to Cape Leeuwin	1:1 500 000	27 August 2010	4 October 2010

New Edition to be published shortly

<i>Chart</i>	<i>Title</i>	<i>Scale</i>	<i>Expected Publication Date</i>	<i>Expected Stock Availability</i>
Aus 51	Australia - North West Coast - Western Australia - Port of Broome	1:10 000	27 August 2010	4 October 2010

Chart permanently withdrawn

<i>Chart</i>	<i>On publication of new edition</i>
Aus 324	Aus 324
Aus 331	Aus 331

Chart to be permanently withdrawn without replacement

<i>Chart</i>	<i>On publication of new chart</i>
Aus 414	Aus 4723
Aus 415	Aus 4723
Aus 416	Aus 4725
Aus 417	Aus 4725

For further details refer to the AHS website at www.hydro.gov.au for new edition and new chart stock arrival information.

When placing orders with a chart agent, mariners should advise whether their order pertains to the current edition or the new edition.

889 AUSTRALIA - Product - Amendment to Australian Notice to Mariners No 2

Australian Hydrographic Service (AA486122)

Page 8

Delete entry for The Map Shop Newcastle New South Wales.

890* AUSTRALIA - NEW SOUTH WALES - Botany Bay - Chart notes; legends

Australian Hydrographic Service (AA484935)

Aus 199 [823/2010]

Amend	legend to <i>Inadequately Surveyed</i> (see ZOC Diagram)	33° 57'.1 S	151° 16'.2 E
	legend to <i>Inadequately Surveyed</i> (see ZOC Diagram)	33° 59'.4 S	151° 15'.8 E
	legend to <i>Inadequately Surveyed</i> (see ZOC Diagram)	34° 00'.4 S	151° 15'.7 E
Delete	note, INADEQUATELY SURVEYED	33° 57'.8 S	151° 14'.2 E

891* AUSTRALIA - NEW SOUTH WALES - Georges River - Alford's Point - Lights established; infrastructure

NSW Maritime (AA483938 - AA483942)

Aus 198 [823/2010]

Insert	continuous line, between	33° 58'.711 S	151° 01'.826 E
		33° 58'.562 S	151° 01'.868 E
	light, <i>F.R</i>	33° 58'.640 S	151° 01'.844 E
	light, <i>F.R</i>	33° 58'.657 S	151° 01'.810 E
	light, <i>F.G</i>	33° 58'.616 S	151° 01'.852 E
	light, <i>F.G</i>	33° 58'.634 S	151° 01'.816 E
Delete	continuous line, between	33° 58'.71 S	151° 01'.82 E
		33° 58'.57 S	151° 01'.85 E
	light	33° 58'.64 S	151° 01'.82 E

892* AUSTRALIA - NEW SOUTH WALES - Port Jackson - Parramatta River - Cabarita to Camellia - Buoys established; lights removed

NSW Maritime (AA483333, AA483334, AA484479, AA484480), Sydney Ports Corporation (AA485573)

Aus 200 [691/2010]

Insert	red conical mooring buoy	33° 50'.874 S	151° 07'.117 E
--------	--------------------------	---------------	----------------

Aus 200 (inset, Parramatta River)

Insert	blue conical mooring buoy	33° 50'.180 S	151° 06'.120 E
Delete	depth, 0 ₆ m	33° 50'.17 S	151° 06'.13 E

Aus 203 [645/2010]

Insert	red conical mooring buoy	33° 50'.874 S	151° 07'.117 E
	blue conical mooring buoy	33° 50'.180 S	151° 06'.120 E

Aus203 (inset, Parramatta River)

Delete	light	33° 48'.98 S	151° 01'.49 E
	light	33° 48'.97 S	151° 01'.47 E

Aus203 (inset, Parramatta River (Continuation))

Delete	light	33° 48'.95 S	151° 01'.29 E
	light	33° 48'.95 S	151° 01'.28 E
	light	33° 49'.01 S	151° 00'.67 E

893* AUSTRALIA - NEW SOUTH WALES - Swansea - Buoy withdrawn

NSW Maritime (AA482382)

Aus 809 (plan, Lake Macquarie Entrance) [584/2010]

Delete	buoy	33° 05'.45 S	151° 38'.36 E
--------	------	--------------	---------------

AX 0809E (plan, Lake Macquarie Entrance) [584/2010]

Delete	buoy	33° 05'.45 S	151° 38'.36 E
--------	------	--------------	---------------

894* AUSTRALIA - NEW SOUTH WALES - Newcastle - Infrastructure
Newcastle Port Corporation (AA480227)

Aus 207 [352/2010]

Insert accompanying block 32° 55'.6 S 151° 47'.5 E

Aus 208 [536/2010]

Insert accompanying block 32° 55'.2 S 151° 47'.2 E

895* AUSTRALIA - TASMAN SEA - Taupo Seamount to Barcoo Seamount - Depths
Geoscience Australia (DHDB 1562230)

Aus 489 [584/2010]

Insert accompanying block 33° 00'.0 S 156° 10'.0 E

896* AUSTRALIA - TASMAN SEA - Lord Howe Island - Wrecks; aeronautical beacon
Australian Hydrographic Service (AA488748), NSW Department of Planning Heritage (AA482187)

Aus 610 [538/2010]

Insert accompanying note 31° 35'.0 S 159° 25'.0 E

Delete aero beacon 31° 31'.3 S 159° 03'.9 E

Aus 610 (plan, Lord Howe Island)]

Insert depth, 15m, enclosed by danger circle with magenta legend, *Historic Wk (see Note)* 31° 31'.717 S 159° 02'.328 E

Delete aero beacon 31° 31'.29 S 159° 03'.87 E

Aus 610 (plan, The Lagoon (North))

Move stranded wreck 31° 31'.28 S 159° 02'.84 E
to 31° 31'.360 S 159° 02'.702 E

Delete aero beacon 31° 31'.29 S 159° 03'.87 E

897* AUSTRALIA - QUEENSLAND - Moreton Bay - Redland Bay to Banana Bank - Light beacon repositioned; topmark
Former Notices - 750(T)/2008, 661(T)/2009 are cancelled
Maritime Safety Queensland Notice 666/2010 (AA484830, AA485135, AA485136), UKHO (AA489690)

Aus 236 [827/2010]

Move light beacon 27° 32'.0 S 153° 20'.1 E
to 27° 31'.96 S 153° 19'.98 E

Substitute south cardinal topmark for topmark 27° 36'.7 S 153° 19'.0 E

898* AUSTRALIA - QUEENSLAND - Brisbane River - Bulimba Point - Light buoy altered
Maritime Safety Queensland Notice 679/2010 (AA486061)

Aus 238 [408/2010]

Amend light buoy to *Fl.R.3s* 27° 26'.62 S 153° 02'.95 E

Aus 238 (plan, Bulimba Reach)

Amend light buoy to *Fl.R.3s* 27° 26'.62 S 153° 02'.95 E

899* AUSTRALIA - QUEENSLAND - Richards Point to North Reef - Historic wrecks

Australian Hydrographic Service (AA483726, AA483729, AA483730)

Aus 245 [654/2010]

Insert	magenta legend, <i>Historic Wk (see Note)</i> , centred on accompanying note	23° 52'.68 S 23° 52'.8 S	151° 23'.50 E 151° 09'.3 E
--------	--	-----------------------------	-------------------------------

Aus 246 [1151/2009]

Insert	magenta legend, <i>Historic Wk (see Note)</i> , centred on accompanying note	23° 52'.66 S 23° 54'.9 S	151° 23'.60 E 151° 18'.8 E
--------	--	-----------------------------	-------------------------------

Substitute	magenta legend, <i>Historic Wk (see Note)</i> , for legend, Wk	23° 53'.2 S	151° 38'.8 E
------------	--	-------------	--------------

Aus 366 [1262/2009]

Substitute	magenta legend, <i>Historic Wk (see Note)</i> , for legend, Wk	23° 53'.2 S	151° 39'.3 E
------------	--	-------------	--------------

Aus 819 [1263/2009]

Insert	magenta legend, <i>Historic Wk (see Note)</i> , centred on magenta legend, <i>Historic Wk (see Note)</i> , centred on	23° 52'.6 S 23° 10'.9 S	151° 23'.8 E 151° 55'.5 E
--------	---	----------------------------	------------------------------

Substitute	magenta legend, <i>Historic Wk (see Note)</i> , for legend, Wk	23° 53'.2 S	151° 39'.2 E
------------	--	-------------	--------------

Aus 820 [1263/2009]

Insert	magenta legend, <i>Historic Wk (see Note)</i> , centred on accompanying note	23° 10'.9 S 22° 44'.0 S	151° 55'.5 E 150° 41'.5 E
--------	--	----------------------------	------------------------------

AX 0820E [1263/2009]

Insert	magenta legend, <i>Historic Wk (see Note)</i> , centred on accompanying note	23° 10'.9 S 22° 44'.0 S	151° 55'.5 E 150° 41'.5 E
--------	--	----------------------------	------------------------------

900* AUSTRALIA - QUEENSLAND - Gloucester Passage - Light beacon repositioned

Maritime Safety Queensland Notice 683/2010 (AA486507)

Aus 268 (plan, Gloucester Passage) [512/2007]

Move	light beacon to	20° 03'.74 S 20° 03'.738 S	148° 25'.98 E 148° 25'.992 E
------	-----------------	-------------------------------	---------------------------------

901* AUSTRALIA - QUEENSLAND - Bowen - Queens Bay - Light buoy withdrawn; wreck salvaged; aeronautical radio beacon

Maritime Safety Queensland Notice 688/2010 (AA486510)

Aus 268 (plan, Approaches to Bowen) [900/2010]

Delete	light buoy	19° 58'.75 S	148° 15'.35 E
	depth, 0 ₆ , and enclosing danger circle with legend, Wk	19° 58'.72 S	148° 15'.27 E

Aus 825 [1054/2007]

Delete	depth, 0 ₅ , and enclosing danger circle with legend, Wk	19° 58'.7 S	148° 15'.3 E
	aero beacon	20° 01'.2 S	148° 12'.9 E

Aus 826 [738/2010]

Delete	depth, 0 ₅ , and enclosing danger circle with legend, Wk	19° 58'.7 S	148° 15'.3 E
	aero beacon	20° 01'.2 S	148° 12'.9 E

902* AUSTRALIA - QUEENSLAND - Cape Bowling Green - Light buoy repositioned

Former Notice - 1386(T)/2009 is cancelled

Australian Hydrographic Service (AA489315), Maritime Safety Queensland Notice 698/2010 (AA486500), T Jackson (AA434900)

Aus 826 [901/2010]

Insert	depth, 11 ₃ m, enclosed by danger circle	19° 18'.24 S	147° 37'.33 E
Move	light buoy	19° 18'.3 S	147° 37'.3 E
	to	19° 18'.11 S	147° 37'.05 E

Aus 827 [738/2010]

Insert	depth, 11 ₃ m, enclosed by danger circle	19° 18'.24 S	147° 37'.33 E
Move	light buoy	19° 18'.3 S	147° 37'.3 E
	to	19° 18'.11 S	147° 37'.05 E

903* PAPUA NEW GUINEA - Sakar Island - Depths

Geoscience Australia (DHDB 1449446)

Aus 386 [784/2010]

Insert	accompanying block	5° 27'.0 S	148° 05'.0 E
--------	--------------------	------------	--------------

Aus 387 [784/2010]

Insert	accompanying block	5° 27'.0 S	148° 05'.0 E
--------	--------------------	------------	--------------

Aus 673 [702/2009]

Insert	accompanying block	5° 27'.0 S	148° 05'.0 E
--------	--------------------	------------	--------------

904* AUSTRALIA - TORRES STRAIT - Endeavour Strait - Tidal streamsAustralian Hydrographic Service, HMAS *Paluma* (AA486637)**Aus 294 [656/2010]**

Insert	flood tide stream, in direction 085°	10° 48'.2 S	142° 06'.8 E
	ebb tide stream, in direction 260°	10° 48'.4 S	142° 06'.8 E
	legend, 2 kn, centred on	10° 48'.3 S	142° 06'.8 E
Delete	ebb tide stream with rate	10° 48'.4 S	147° 06'.8 E
	flood tide stream with rate	10° 48'.3 S	142° 06'.8 E

Aus 301 [656/2010]

Insert	flood tide stream, in direction 085°	10° 48'.0 S	142° 07'.0 E
	ebb tide stream, in direction 260°	10° 48'.5 S	142° 07'.0 E
	legend, 2 kn, centred on	10° 48'.3 S	142° 07'.0 E
Delete	ebb tide stream with rate	10° 48'.5 S	142° 06'.7 E
	flood tide stream with rate	10° 48'.0 S	142° 07'.0 E

Aus 376 [837/2010]

Insert	flood tide stream, in direction 085°	10° 48'.0 S	142° 07'.0 E
	ebb tide stream, in direction 260°	10° 48'.5 S	142° 07'.0 E
	legend, 2 kn, centred on	10° 48'.3 S	142° 07'.0 E
Delete	ebb tide stream with rate	10° 48'.5 S	142° 06'.7 E
	flood tide stream with rate	10° 48'.0 S	142° 07'.0 E

904* AUSTRALIA - TORRES STRAIT - Endeavour Strait - Tidal streams (continued)**Aus 700 [656/2010]**

Insert	flood tide stream, in direction 085°	10° 48'.2 S	142° 06'.7 E
	ebb tide stream, in direction 260°	10° 48'.5 S	142° 06'.7 E
	legend, 2 <i>kn</i> , centred on	10° 48'.4 S	142° 06'.7 E
Delete	ebb tide stream with rate	10° 48'.5 S	142° 06'.7 E
	flood tide stream with rate	10° 48'.3 S	142° 06'.7 E

905* AUSTRALIA - NORTHERN TERRITORY - Groote Eylandt - Submarine cable; depths; aeronautical beacon

Former Notice - 719(T)/2010 is cancelled

Telstra (AA482418)

Aus 13 (plan, Bickerton Island) [133/2007]

Insert	accompanying block	13° 57'.0 S	136° 17'.0 E
--------	--------------------	-------------	--------------

Aus 14 [244/2009]

Insert	accompanying block	13° 53'.0 S	136° 21'.0 E
	submarine cable, between	13° 57'.06 S	136° 15'.40 E
		13° 58'.50 S	136° 14'.00 E
Delete	aero beacon	13° 58'.5 S	136° 27'.3 E

Aus 14 (plan, Milner Bay)

Insert	submarine cable	13° 51'.919 S	136° 25'.367 E
		13° 52'.003 S	136° 25'.268 E
		13° 52'.017 S	136° 25'.255 E

Aus 305 [512/2006]

Insert	accompanying block	14° 05'.0 S	136° 07'.0 E
Delete	aero beacon	13° 58'.5 S	136° 27'.3 E

906* AUSTRALIA - NORTHERN TERRITORY - Melville Island - Cape Van Diemen - Wreck

J Miles (AA484724 - AA484726)

Aus 309 [788/2010]

Insert	depth, 30 <i>m</i> , enclosed by danger circle with legend, <i>Wk</i>	11° 01'.54 S	130° 07'.36 E
Delete	depth, 30 ₅ <i>m</i>	11° 01'.0 S	130° 08'.0 E

Aus 310 [364/2009]

Insert	depth, 30 <i>m</i> , enclosed by danger circle with legend, <i>Wk</i>	11° 01'.54 S	130° 07'.36 E
Delete	depth, 30 ₅ <i>m</i>	11° 01'.0 S	130° 08'.0 E

Aus 4721 (INT 721) [838/2010]

Insert	depth, 30 <i>m</i> , enclosed by danger circle with legend, <i>Wk</i>	11° 01'.5 S	130° 07'.4 E
--------	---	-------------	--------------

AX 0309F [788/2010]

Insert	depth, 30 <i>m</i> , enclosed by danger circle with legend, <i>Wk</i>	11° 01'.54 S	130° 07'.36 E
Delete	depth, 30 ₅ <i>m</i>	11° 01'.0 S	130° 08'.0 E

906* AUSTRALIA - NORTHERN TERRITORY - Melville Island - Cape Van Diemen – Wreck (continued)**AX 72309 [788/2010]**

Insert	depth, 30m, enclosed by danger circle with legend, <i>Wk</i>	11° 01'.54 S	130° 07'.36 E
--------	---	--------------	---------------

Delete	depth, 30 ₅ m	11° 01'.0 S	130° 08'.0 E
--------	--------------------------	-------------	--------------

AX 0310F [364/2009]

Insert	depth, 30m, enclosed by danger circle with legend, <i>Wk</i>	11° 01'.54 S	130° 07'.36 E
--------	---	--------------	---------------

Delete	depth, 30 ₅ m	11° 01'.0 S	130° 08'.0 E
--------	--------------------------	-------------	--------------

AX 4721F [838/2010]

Insert	depth, 30m, enclosed by danger circle with legend, <i>Wk</i>	11° 01'.5 S	130° 07'.4 E
--------	---	-------------	--------------

907* AUSTRALIA - NORTHERN TERRITORY - Darwin - Light buoy established

Australian Hydrographic Service (AA423702), Darwin Port Authority (AA483178, AA485100)

Aus 26 [295/2010]

Insert	special cylindrical light buoy, <i>Fl.2-5s</i> , without topmark	12° 25'.52 S	130° 48'.14 E
--------	--	--------------	---------------

Delete	depth, 13m	12° 25'.5 S	130° 48'.1 E
--------	------------	-------------	--------------

AX 72026 [295/2010]

Insert	special cylindrical light buoy, <i>Fl.2-5s</i> , without topmark	12° 25'.52 S	130° 48'.14 E
--------	--	--------------	---------------

Delete	depth, 13m	12° 25'.5 S	130° 48'.1 E
--------	------------	-------------	--------------

908* AUSTRALIA - WESTERN AUSTRALIA - Mermaid Reef - Wreck

Australian Hydrographic Service (AA489314)

Aus 415 [658/2010]

Substitute	safe clearance depth, 183m, enclosed by danger circle with legend, <i>Wk</i> , for wreck	17° 11'.0 S	120° 39'.0 E
------------	---	-------------	--------------

Aus 4722 (INT 722) [592/2010]

Substitute	safe clearance depth, 183m, enclosed by danger circle with legend, <i>Wk</i> , for wreck	17° 11'.0 S	120° 39'.0 E
------------	---	-------------	--------------

AX 0415F [658/2010]

Substitute	safe clearance depth, 183m, enclosed by danger circle with legend, <i>Wk</i> , for wreck	17° 11'.0 S	120° 39'.0 E
------------	---	-------------	--------------

AX 4722F [592/2010]

Substitute	safe clearance depth, 183m, enclosed by danger circle with legend, <i>Wk</i> , for wreck	17° 11'.0 S	120° 39'.0 E
------------	---	-------------	--------------

909* AUSTRALIA - WESTERN AUSTRALIA - Exmouth - Light beacon repositioned

Department of Transport WA (AA485017)

Aus 744 (plan, Exmouth Boat Harbour) [659/2010]

Move	light beacon	21° 57'.56 S	114° 08'.80 E
	to	21° 57'.554 S	114° 08'.788 E
Delete	dashed line, between	21° 57'.55 S	114° 08'.79 E
		21° 57'.56 S	114° 08'.80 E

910* AUSTRALIA - WESTERN AUSTRALIA - Point Murat - Light

Australian Hydrographic Service (AA486198)

Aus 745 [NE 4/6/2010]

Insert	light, <i>F.Bu</i>	21° 49'.88 S	114° 10'.45 E
--------	--------------------	--------------	---------------

911* AUSTRALIA - WESTERN AUSTRALIA - Kwinana - Light discontinued; chimneys removed*Former Notice - 453(T)/2009 is cancelled*

Fremantle Ports (AA486649)

Aus 114 [115/2010]

Delete	light	32° 12'.57 S	115° 46'.09 E
	dashed line, with legend Dir 105-7°, emanating from		
	light	32° 12'.57 S	115° 46'.09 E
	chimney, with legend CHY (141)	32° 11'.84 S	115° 46'.53 E
	chimney, with legend CHY (118)	32° 11'.88 S	115° 46'.52 E

Aus 117 [840/2010]

Delete	light	32° 12'.57 S	115° 46'.09 E
	chimney, with legend (141)	32° 11'.84 S	115° 46'.53 E
	chimney, with legend CHYS (118)	32° 11'.88 S	115° 46'.52 E

AX 70117 [840/2010]

Delete	light	32° 12'.57 S	115° 46'.09 E
	chimney, with legend (141)	32° 11'.84 S	115° 46'.53 E
	chimney, with legend CHYS (118)	32° 11'.88 S	115° 46'.52 E

912* AUSTRALIA - WESTERN AUSTRALIA - Albany - Hanover Bay - Light altered

Department of Transport WA (AA485017)

Aus 109 [874/2009]

Amend	light to <i>F.G</i>	35° 01'.98 S	117° 53'.36 E
-------	---------------------	--------------	---------------

913* AUSTRALIA - SOUTH AUSTRALIA - Williams Island to Winceby Island - ZOC diagram

Australian Hydrographic Service (AA489628)

Aus 776 [796/2010]

Substitute	accompanying ZOC diagram	35° 05'.0 S	137° 08'.0 E
------------	--------------------------	-------------	--------------

AX 0776E [796/2010]

Substitute	accompanying ZOC diagram	35° 05'.0 S	137° 08'.0 E
------------	--------------------------	-------------	--------------

914* AUSTRALIA - SOUTH AUSTRALIA - Ardrossan - Depths
 Australian Hydrographic Service (AA486585)

Aus 139 (plan, Ardrossan Harbor Approaches) [841/2010]

Insert	depth, 14 ₄ m	34° 25'.66 S	138° 02'.12 E
	contour, between	34° 25'.59 S	138° 01'.84 E
		34° 25'.55 S	138° 02'.28 E
	contour, between	34° 25'.82 S	138° 01'.92 E
		34° 25'.78 S	138° 02'.31 E
Substitute	depth, 7 ₉ m, for depth, 8 ₁ m	34° 26'.4 S	137° 55'.6 E
Delete	depth, 10m, and enclosing contour	34° 29'.6 S	137° 56'.1 E
	contour, between	34° 25'.6 S	138° 01'.8 E
		34° 25'.8 S	138° 01'.9 E
	contour, between	34° 25'.6 S	138° 02'.3 E
		34° 25'.8 S	138° 02'.3 E

Aus 139 (plan, Ardrossan Harbor)

Insert	depth, 7 ₉ m	34° 26'.360 S	137° 55'.635 E
Delete	depth, 8 ₁ m	34° 26'.36 S	137° 55'.65 E

915* AUSTRALIA - VICTORIA - Cape Nelson - Light altered; aeronautical beacon

Former Notice - 526(P)/2010 is cancelled
 Australian Maritime Safety Authority ATH 6/2010 (AA486457)

Aus 140 [712/2009]

Amend	light range to 20M	38° 25'.9 S	141° 32'.6 E
Delete	aero beacon	38° 18'.9 S	141° 28'.4 E

Aus 348 [429/2010]

Amend	light range to 20M	38° 25'.9 S	141° 32'.6 E
Delete	aero beacon	38° 18'.9 S	141° 28'.4 E

916* AUSTRALIA - BASS STRAIT - Ninety Mile Beach - Depth eastwards

Australian Hydrographic Service (AA485622)

Aus 487 [799/2010]

Delete	depth, 106m, and enclosing contour	38° 22'.0 S	149° 05'.5 E
	500m contour, centred on	38° 21'.1 S	149° 05'.5 E

917(T)/2010 AUSTRALIA - NEW SOUTH WALES - Port Kembla - Depth information*Former Notice - 660(T)/2010 is cancelled*

Port Kembla Port Corporation Notice 4/2010 (AA486022, AA486023)

Available depths as at 12 August 2010:

<i>Berth</i>	<i>Metres</i>	<i>Remarks</i>
Inner Harbour	15.1	
North West Basin	11.2	
101	11.3	
102	15.7	
103	11.7	
104	15.3	
105	15.2	(14.8 for vessels overhanging)
106	13.7	
107	12.1	
108	-	Future Development
109	11.8	
110	10.7	(9.0)
111	15.4	
112	12.8	
113	11.2	9.5m east of bollard 3 (16.7m chainage)
201	10.3	To 250m
201	9.3	To 280m
201	9.0	To 350m
202	10.5	
202	10.4	
202	10.2	
* 203	10.1	
204	4.2	
205	6.8	
206	11.1	

* Indicates new or revised entry.

Chart temporarily affected - Aus 194**918(T)/2010 AUSTRALIA - NEW SOUTH WALES - Port Kembla - Obstructions***Former Notice - 864(T)/2008 is cancelled*

NSW Maritime (AA354885)

Lost anchors and cables exist in the area bounded by:

34° 25'.70 S 150° 55'.20 E

34° 25'.70 S 150° 59'.40 E

34° 22'.00 S 150° 59'.40 E

34° 22'.00 S 150° 57'.00 E.

Chart temporarily affected - Aus 195 - Aus 808 - AX 0808E**919(T)/2010 AUSTRALIA - NEW SOUTH WALES - Newcastle - Obstructions***Former Notice - 866(T)/2008 is cancelled*

NSW Maritime (AA354885)

Lost anchors and cables exist in the area bounded by:

32° 56'.50 S 151° 48'.00 E

32° 56'.50 S 151° 56'.50 E

33° 15'.00 S 151° 47'.00 E

33° 15'.00 S 151° 38'.50 E.

Chart temporarily affected - Aus 207 - Aus 208 - Aus 809 - AX 0809E

920(T)/2010 AUSTRALIA - QUEENSLAND - Moreton Bay - Manly - Light beacon removed

Former Notice - 321(T)/2009 is cancelled
Maritime Safety Queensland Notice 839/2009 (AA446101)

Cancel this notice on receipt.

Chart formerly affected - Aus 236 - AU5237X8**921(T)/2010 AUSTRALIA - QUEENSLAND - Brisbane River - Bulimba Reach - Newstead - Harbour works completed**

Former Notice - 814(T)/2008 is cancelled
Maritime Safety Queensland Notice 669(T)/2010 (AA484932)

Cancel this notice on receipt.

Chart formerly affected - Aus 238 - AU5237X8**922(T)/2010 AUSTRALIA - QUEENSLAND - Bundaberg - Burnett River - Shoaling**

Maritime Safety Queensland Notice 710(T)/2010 (AA489835)

Shoaling, with a least depth of *0.2m*, exists in the vicinity of 24° 46'.55 S 152° 22'.90 E.

Mariners are advised to navigate with caution in the area.

Chart temporarily affected - Aus 242**923(T)/2010 AUSTRALIA - QUEENSLAND - Gladstone - Calliope River - Harbour works**

Date - Until 8 October 2010
Maritime Safety Queensland Notice 695(T)/2010 (AA486288)

Harbour works are in progress for the Calliope River Bridge (23° 50'.74 S 151° 12'.65 E). Barge *Yarra 2* and support vessels are onsite. All hazards to navigation will display appropriate lights and shapes.

Mariners are advised to navigate with caution in the area.

Chart temporarily affected - Aus 245 - AU5244X5**924(T)/2010 AUSTRALIA - QUEENSLAND - Gladstone - Calliope River - Scientific instruments recovered**

Former Notice - 721(T)/2009 is cancelled
Maritime Safety Queensland Notice 371(T)/2009 (AA411214)

Cancel this notice on receipt.

Chart formerly affected - Aus 245 - AU5244X5**925(T)/2010 AUSTRALIA - QUEENSLAND - Percy Isles - Middle Island - Scientific instrument recovered**

Former Notice - 1449(T)/2009 is cancelled
Maritime Safety Queensland Notice 680/2010 (AA486073)

Cancel this notice on receipt.

Chart formerly affected - Aus 822 - Aus 823 - AX 0822E - AX 0823E - AU322150

926(T)/2010 AUSTRALIA - QUEENSLAND - Hay Point - Dredging operations; mooring buoys

Former Notice - 805(T)/2010 is cancelled

Date - Until 30 September 2010

Maritime Safety Queensland Notices 455(T)/2010, 632(T)/2010, 709/2010 (AA472440, AA483487, AA489856)

Dredge *Hippopotes*, barges *Murray River* and *Yarra River*, MT *Black Panther* and support vessels are conducting dredging operations in the area to the south of DBCT berth No1 (21° 15'.00 S 149° 18'.36 E).

The tug will be towing the barges to the spoil ground (21° 11'.53 S 149° 18'.50 E).

Mooring buoys exist as follows:

Position	Remarks
21° 16'.04 S 149° 18'.76 E	unlit
21° 16'.19 S 149° 18'.86 E	unlit
21° 16'.13 S 149° 18'.67 E	unlit
21° 20'.65 S 149° 23'.20 E	lit, Fl. Y.5s
21° 20'.85 S 149° 23'.18 E	lit, Fl. Y.5s
21° 21'.11 S 149° 23'.39 E	lit, Fl. Y.5s.

All vessels will monitor VHF Ch 14 and 16 and display appropriate lights and signals.

Mariners are advised to navigate with caution in the area.

Chart temporarily affected - Aus 249 - Aus 250 - AX 0249E - AU422149 - AU5250P2

927(T)/2010 AUSTRALIA - QUEENSLAND - Hay Point - Drilling operations

Date - Until 11 September 2010

Maritime Safety Queensland Notice 718(T)/2010 (AA490320)

Vessels *Nerida* and *Obsession* are conducting drilling operations at DBCT berths 1 (21° 15'.01 S 149° 18'.36 E) and 2 (21° 15'.27 S 149° 18'.52 E).

All vessels will monitor VHF Ch 14 and Ch 16.

Mariners are advised to navigate with caution in the area.

Chart temporarily affected - Aus 250 - AU5250P2

928(T)/2010 AUSTRALIA - QUEENSLAND - Port Douglas - Dredging operations

Date - Until 25 September 2010

Maritime Safety Queensland Notice 729(T)/2010 (AA490666)

The dredge *Everglade* is conducting dredging operations in the marina (16° 29'.16 S 145° 27'.57 E).

The dredge has deployed anchors marked by orange buoys and will monitor VHF Ch 16 and UHF Ch 25.

Mariners are advised to navigate with caution in the area.

Chart temporarily affected - Aus 270 - AU5270P1

929(T)/2010 AUSTRALIA - QUEENSLAND - Cooktown - Depth information*Former Notice - 876(T)/2008 is cancelled*

Maritime Safety Queensland Notice 720(T)/2010 (AA490135)

Available depths as at 20 August 2010:

	<i>Metres</i>
* Entrance Channel	1.7
* Inner Channel	2.1
* Public Wharf	2.6
Swing Basin	1.2

* Indicates new or revised entry.

Chart temporarily affected - Aus 270**930(T)/2010 AUSTRALIA - CORAL SEA - Lihou Reef - Light buoy off station northwards***Former Notice - 858(T)/2010 is cancelled*

Australian Bureau of Meteorology (AA490604)

The light buoy, *Fl* (14° 48'.0 S 153° 35'.0 E), is drifting and currently in position 14° 12'.68 S 151° 33'.85 E (25 Aug 2010).**Chart temporarily affected - Aus 4621 (INT 621) - AX 4621F - AU220150****931(T)/2010 AUSTRALIA - QUEENSLAND - Thursday Island - Depth information***Former Notice - 1025(T)/2009 is cancelled*

Maritime Safety Queensland Notice 700(T)/2010 (AA486499)

Available depths as at 16 August 2010:

	<i>Metres</i>
* Hovell Bar	3.8
Main Wharf	3.1 (a sounding of 3.1m has been recorded approximately 60m south of Main Wharf; 4.1m alongside wharf)
Caltex Wharf	4.1
Engineers Wharf	3.5
Inner Harbour	4.6
Boat Channel	4.8

* Indicates revised entry.

Chart temporarily affected - Aus 293 - Aus 299**932(T)/2010 AUSTRALIA - QUEENSLAND - Weipa - Mission River - Harbour works***Date - Until 10 December 2010*

Maritime Safety Queensland Notice 681(T)/2010 (AA489858)

Harbour works and diving operations are in progress for the Mission River Bridge (12° 35'.85 S 141° 53'.65 E). Barge *PMG 1* and MV *Lisa Lee* are onsite and will display appropriate lights and shapes. The barge has deployed anchors marked by six white light buoys.

A lit mooring buoy exists in position 12° 36'.20 S 141° 51'.89 E.

Mariners are advised to navigate with caution in the area.

Chart temporarily affected - Aus 4 - Aus 701 - AU413141

933(T)/2010 AUSTRALIA - WESTERN AUSTRALIA - Broome - Red Bluff - Wreck salvaged

Former Notice - 893(T)/2007 is cancelled
 Broome Port Authority (AA486185)

Cancel this notice on receipt.

Chart formerly affected - Aus 50

934(T)/2010 AUSTRALIA - WESTERN AUSTRALIA - Broome - Gantheaume Bay - Obstruction removed; light buoy withdrawn

Former Notice - 849(T)/2009 is cancelled
 Broome Port Authority (AA486185)

Cancel this notice on receipt.

Chart formerly affected - Aus 50 - Aus 324

935(T)/2010 AUSTRALIA - WESTERN AUSTRALIA - Dampier - Light buoy withdrawn

Former Notice - 259(T)/2008 is cancelled
 Dampier Port Authority (AA490725)

Cancel this notice on receipt.

Chart formerly affected - Aus 58 - Aus 59

936(T)/2010 AUSTRALIA - WESTERN AUSTRALIA - Dampier - Shoaling

Former Notice - 570(T)/2010 is cancelled
 Dampier Port Authority Notice 34/2010 (AA490752)

Shoaling, with least depth *3m*, exists at the Mermaid Supply Base between the berths and the slip in the area with a declared depth of 4m (20° 37'.94 S 116° 45'.22 E (WGS84 datum)).

Mariners are advised to navigate with caution in the area.

Chart temporarily affected - Aus 59 - AU5XXX58

937(T)/2010 AUSTRALIA - WESTERN AUSTRALIA - Dampier - Mistaken Island - Lights unlit

Dampier Port Authority Notice 27/2010 (AA490753)

The lights, *Fl.R.3s 3M*, in positions 20° 39'.14 S 116° 39'.69 E and 20° 39'.22 S 116° 39'.48 E (WGS84 datum) are unlit.

Chart temporarily affected - Aus 58 - Aus 59 - AU5XXX58

938(T)/2010 AUSTRALIA - WESTERN AUSTRALIA - Thevenard Island to Ashburton Road - Scientific instruments*Former Notice - 772(T)/2010 is cancelled**Date - Until 31 August 2011*

MetOcean Engineers (AA490638)

Scientific instruments exist as follows:

<i>Position (WGS84 datum)</i>	<i>Remarks</i>
21° 18'.74 S 115° 06'.64 E	lit buoy, <i>Fl(5)Y.20s</i>
21° 21'.86 S 114° 51'.20 E	5 poly floats
21° 22'.08 S 114° 50'.91 E	lit buoy, <i>Fl(5)Y.20s</i>
21° 22'.08 S 114° 51'.00 E	5 poly floats
21° 25'.95 S 114° 55'.97 E	lit buoy, <i>Fl(5)Y.20s</i>
21° 26'.13 S 114° 55'.85 E	5 poly floats
21° 26'.58 S 114° 47'.53 E	lit buoy, <i>Fl(5)Y.20s</i>
21° 28'.41 S 115° 08'.41 E	lit buoy, <i>Fl(5)Y.20s</i>
21° 28'.43 S 115° 08'.51 E	lit buoy, <i>Fl(5)Y.20s</i>
21° 29'.13 S 115° 00'.15 E	5 poly floats
21° 29'.15 S 115° 00'.94 E	lit buoy, <i>Fl(5)Y.20s</i>
21° 29'.21 S 115° 00'.94 E	5 poly floats
21° 30'.12 S 115° 02'.92 E	lit buoy, <i>Fl(5)Y.20s</i>
21° 31'.40 S 114° 54'.90 E	lit buoy, <i>Fl(5)Y.20s</i>
21° 31'.62 S 115° 07'.04 E	lit buoy, <i>Fl(5)Y.20s</i>
21° 31'.63 S 114° 46'.37 E	lit buoy, <i>Fl(5)Y.20s</i>
21° 31'.66 S 115° 07'.07 E	5 poly floats
21° 35'.13 S 114° 56'.38 E	lit buoy, <i>Fl(5)Y.20s</i>
21° 35'.17 S 114° 56'.38 E	5 poly floats
21° 36'.30 S 115° 04'.94 E	lit buoy, <i>Fl(5)Y.20s</i>
21° 36'.30 S 115° 04'.75 E	5 poly floats
21° 38'.11 S 114° 41'.18 E	lit buoy, <i>Fl(5)Y.20s</i>
21° 39'.32 S 115° 00'.77 E	lit buoy, <i>Fl(5)Y.20s</i>
21° 39'.33 S 115° 00'.66 E	lit buoy, <i>Fl(5)Y.20s</i>

Chart temporarily affected - Aus 64 - Aus 743 - Aus 744**939(T)/2010 AUSTRALIA - WESTERN AUSTRALIA - Fremantle - Dredging operations***Former Notice - 142(T)/2010 is cancelled**Date - Until 30 November 2010*

Department for Transport WA Notice 7/2010 (AA451310), Fremantle Ports Notices 10(T)/2010 (AA489855)

The dredges *Gateway* and *Phoenix* and support vessels *Botany Salvor* and *BKM 103* are conducting dredging operations within and around the Inner Harbour (32° 02'.80 S 115° 44'.72 E) and Deep Water Channel (31° 59'.50 S 115° 41'.55 E).

The dredge *Phoenix* has deployed anchors and mariners are not to pass within 100m of the dredge.

An air curtain exist in the in the entrance to Rous Head Harbour (32° 03'.22 S 115° 43'.69 E).

Mariners are advised to navigate with caution in the area.

Chart temporarily affected - Aus 112 - Aus 113 - Aus 117 - AX 63112 - AX 70117 - AU5XX113**940(T)/2010 AUSTRALIA - TASMANIA - D'Entrecasteaux Channel - Huon Island - Scientific instrument***Date - Until 18 November 2010*

Marine and Safety Tasmania M89/2010 (AA489843)

A scientific instrument, *Oc. 10s*, exists in position 43° 19'.31 S 147° 07'.75 E.

Chart temporarily affected - Aus 173 - Aus 795 - AU444147

941(T)/2010 AUSTRALIA - VICTORIA - Port Phillip - Point Richards - Harbour works completed

Former Notice - 728(T)/2010 is cancelled
Victorian Notice 62(T)/2010 (AA475997)

Cancel this notice on receipt.

Chart formerly affected - Aus 157 - AU439144**942(T)/2010 AUSTRALIA - VICTORIA - Port Phillip - Geelong - Depth information**

Former Notice - 465(T)/2009 is cancelled
Victorian Regional Channels Authority (AA490300, AA490301), Victorian Notice 31(T)/2005, 104(T)/2005 (AA131863, AA203894)

Available depths as at 19 August 2010:

<i>Berth</i>	<i>Metres</i>
Bulk Grain Pier 1	9.0
Bulk Grain Pier 2	11.0
Point Wilson Jetty North	8.6
Point Henry Pier Alcoa	11.6

* Indicates new or revised entry.

A 8.1m shoal exists in position 38° 07'.336 S 144° 33'.131 E.

Chart temporarily affected - Aus 153 - Aus 157**943(T)/2010 AUSTRALIA - VICTORIA - Port Phillip - Werribee River - Harbour works**

Date - Until 28 February 2011
Victorian Notice 82(T)/2010 (AA490399)

Works associated with upgrade to the boat ramp and jetty (37° 58'.35 S 144° 41'.16 E) are in progress. Certain sections of the boat ramp and jetty may be closed during works and information on the closures can be obtained by contacting Wyndham City Council on (03) 9742 0777.

Mariners are advised to navigate with caution in the area.

Chart temporarily affected - Aus 155**944(T)/2010 AUSTRALIA - VICTORIA - Port Phillip - Altona - Harbour works**

Date - Until 17 September 2010
Victorian Notice 79(T)/2010 (AA489842)

Works associated with the installation of a pipeline are in progress in position 37° 53'.00 S 144° 48'.76 E.

Chart temporarily affected - Aus 155 - AU438144

HYDROGRAPHIC REPORTS

<i>Locality</i>	<i>Report</i>	<i>Ship/Authority</i>	<i>Observer</i>
WA- Kwinana	Chimneys		T Bozoky

NAVIGATION WARNINGS

The following radio messages have been received during the period to 27 August 2010. Signal copies of these messages may be destroyed. It is recommended that the reprint of Navigational Warnings should be kept in a file or a book divided into areas. Cancellation should be made on receipt of signals and reprints.

Rigs on location other than those listed in the latest Section III summary are the subject of Radio Navigational Warnings. Rigs in transit will not be the subject of Warnings.

AUSCOAST WARNING

- 191 Cancelled.
- 192 Cancelled.
- 193 Cancelled.
- 194 Cancelled.
- 195 Cancelled.
- 196 Cancelled.
- 197 Special purpose vessel *Geo Atlantic* conducting seismic survey in area bounded by 20° 24'·0 S to 21° 40'·0 S and 112° 10'·0 E to 115° 12'·0 E. 6M clearance requested.
- 198 Drill rig *Songa Venus* in position 13° 40'·46 S 123° 20'·63 E. 2·5M clearance requested.
- 199 Drill rig *Ensco 109* (formally known as *Ocean Shield*) in position 20° 07'·71 S 116° 26'·05 E. 2·5M clearance requested.
- 200 Cancelled.
- 201 Cancelled.
- 202 Cancelled.
- 203 Cancelled.
- 204 Cancelled.
- 205 Cancelled.
- 206 Caldbeck Reef light K3282 (10° 06'·40 S 143° 09'·90 E) unreliable.
- 207 Cancelled.
- 208 Cancelled.
- 209 Special purpose vessel *Geo Natuna* conducting seismic survey towing 5M cable in area bounded by 12° 30'·0 S to 13° 00'·0 S and 122° 20'·0 E to 123° 00'·0 E. 7M clearance requested.

NAVAREA X WARNINGS

- 008 As previously notified by NAVAREA warning, mariners using ECDIS are advised not to rely solely on automated voyage planning and monitoring checks and alarms. It is recommended that mariners undertake careful visual inspection of the entire planned route to confirm that it, and any deviations from it, is clear of dangers. The ECDIS display should be configured to display all soundings during this inspection.

Particular care should be taken when planned routes cross areas where only small scale ENC's (Usage Bands 1 and 2) are available. In some display configurations, such as when no names are shown, small islands and other point features may be difficult to identify or could be obscured by surrounding depth contours. Some ECDIS systems appear only to undertake route check functions on larger scale ENC's and therefore alarms might not activate. This may not be clearly indicated on the ECDIS display.

The International Hydrographic Organization (IHO) is leading technical action to investigate these matters in consultation with ECDIS equipment manufacturers. Further information will be made available through Notices to Mariners.

Navigational warnings in force as at 270001UTC AUG 10.**Auscoast**

111 169 177 181 188 197 198 199 206 209

Navarea X

008

Summary of mobile drilling rigs as at 270001UTC AUG 10.

<i>Name</i>	<i>Position</i>
Songa Venus	13° 40'.46 S 123° 20'.63 E
Ensco 109	20° 07'.71 S 116° 26'.05 E
Stena Clyde	20° 03'.70 S 115° 11'.00 E
Ocean America	19° 24'.13 S 114° 14'.59 E
Ocean Epoch	21° 34'.02 S 114° 10'.08 E
Jack Bates	20° 28'.60 S 113° 55'.60 E
Atwood Eagle	21° 28'.11 S 113° 50'.47 E
Maersk Discoverer	19° 56'.32 S 111° 38'.57 E
Ocean Patriot	38° 10'.86 S 148° 35'.58 E

NAVAREA XIV WARNINGS

Nil.

Navarea XIV warnings in force as at 270001UTC AUG 10.

019 022 023

To accompany Australian Notice to Mariners 896/2010

HISTORIC WRECK

The site of an historic wreck is protected from unauthorised interference. For details see Australian Seafarers Handbook AHP 20.

Note for chart Aus 610.

To accompany Australian Notice to Mariners 899/2010

HISTORIC WRECK

The site of an historic wreck is protected from unauthorised interference. For details see Australian Seafarers Handbook AHP 20.

Note for chart Aus 245.

To accompany Australian Notice to Mariners 899/2010

HISTORIC WRECK

The site of an historic wreck is protected from unauthorised interference. For details see Australian Seafarers Handbook AHP 20.

Note for chart Aus 246.

To accompany Australian Notice to Mariners 899/2010

HISTORIC WRECK

The site of an historic wreck is protected from unauthorised interference. For details see Australian Seafarers Handbook AHP 20.

Note for chart Aus 820.

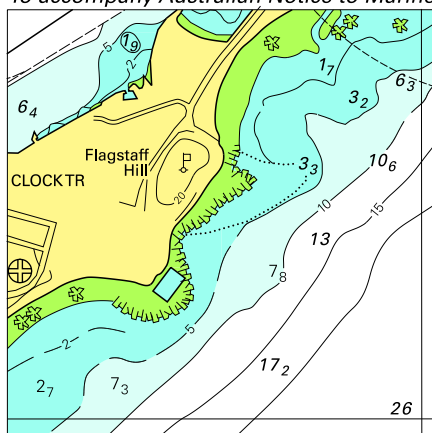
To accompany Australian Notice to Mariners 899/2010

HISTORIC WRECK

The site of an historic wreck is protected from unauthorised interference. For details see Australian Seafarers Handbook AHP 20.

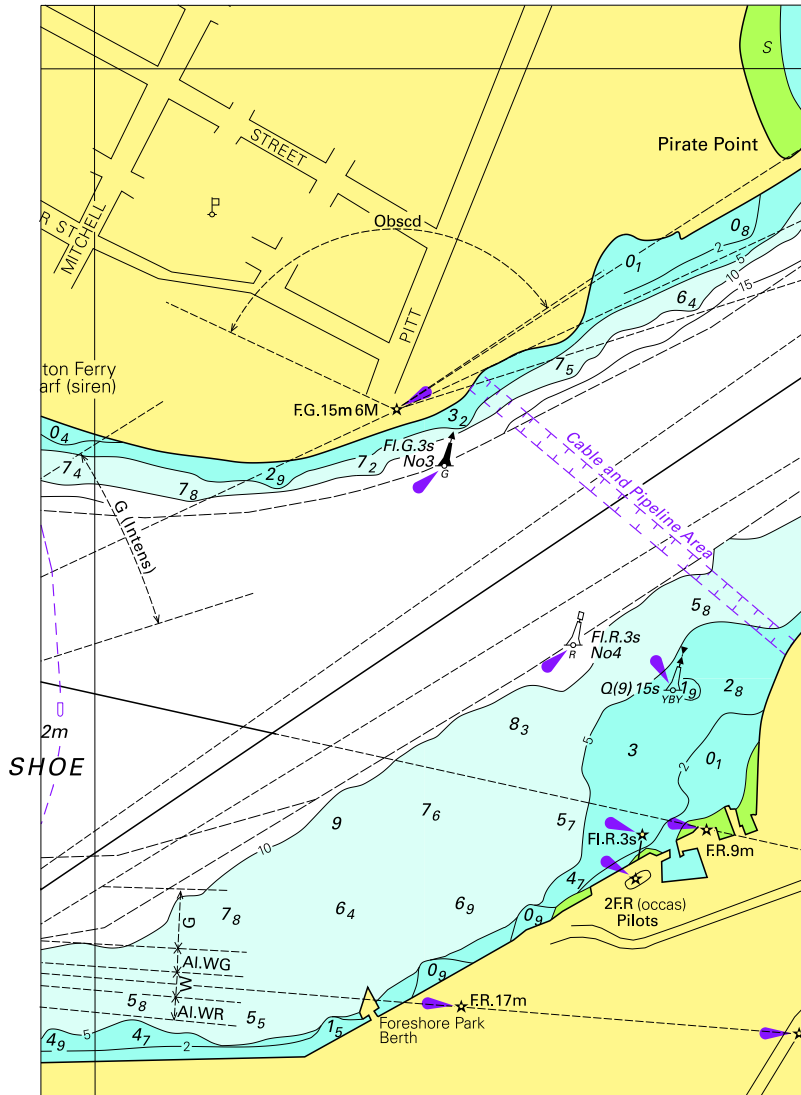
Note for chart AX 0820E.

To accompany Australian Notice to Mariners 894/2010

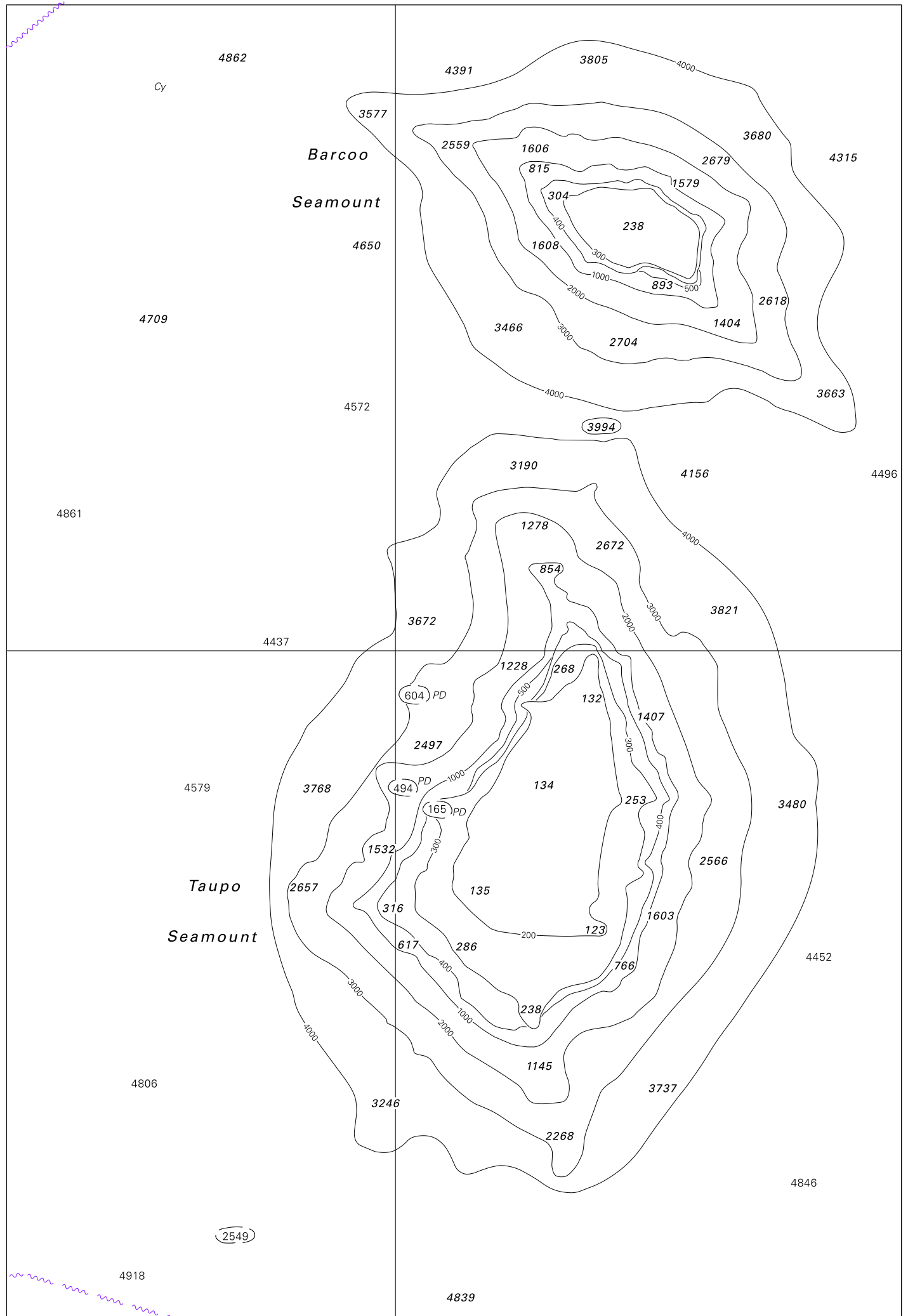


© Commonwealth of Australia 2010
Block for chart Aus 207 (56.7 x 56.1mm)

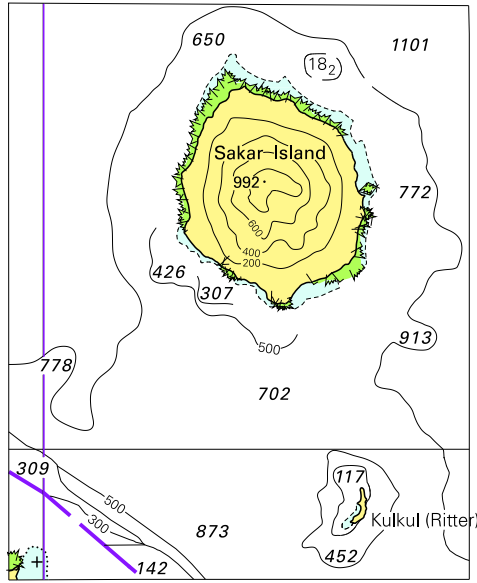
To accompany Australian Notice to Mariners 894/2010



Block for chart Aus 208 © Commonwealth of Australia 2010 (101.5 x 144.5mm)

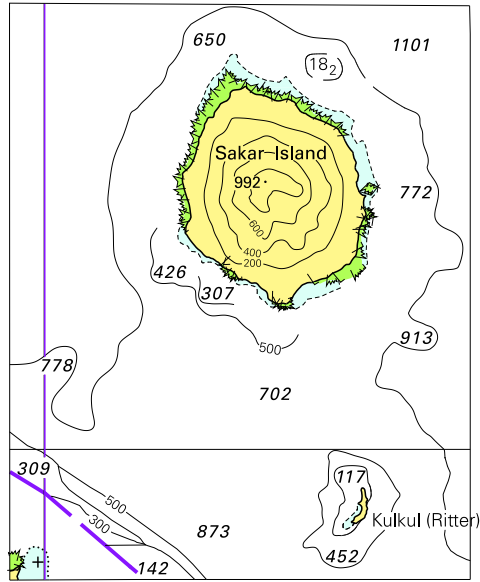


To accompany Australian Notice to Mariners 903/2010

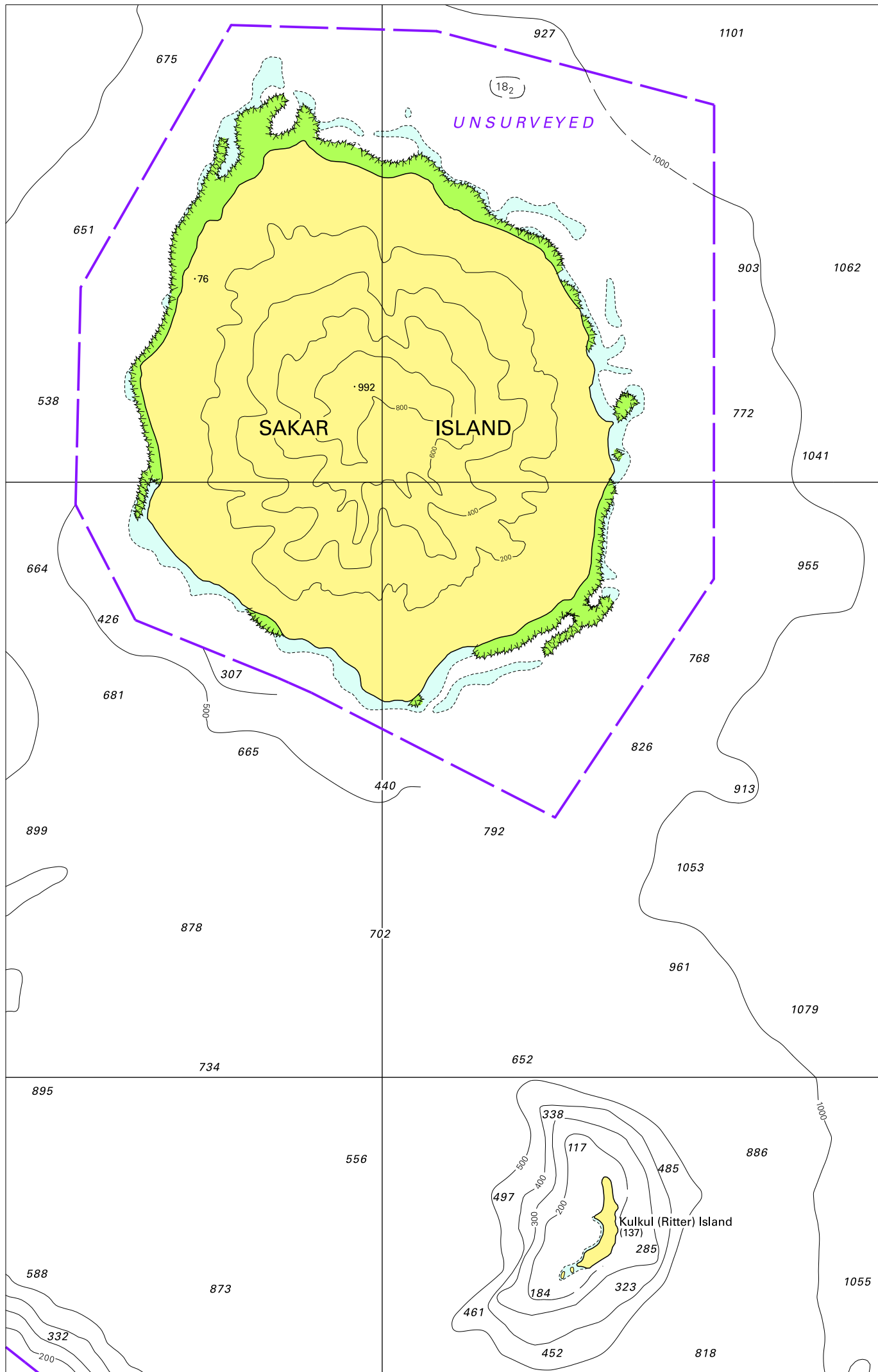


© Commonwealth of Australia 2010
Block for Aus 386 (60.9 x 75.9mm)

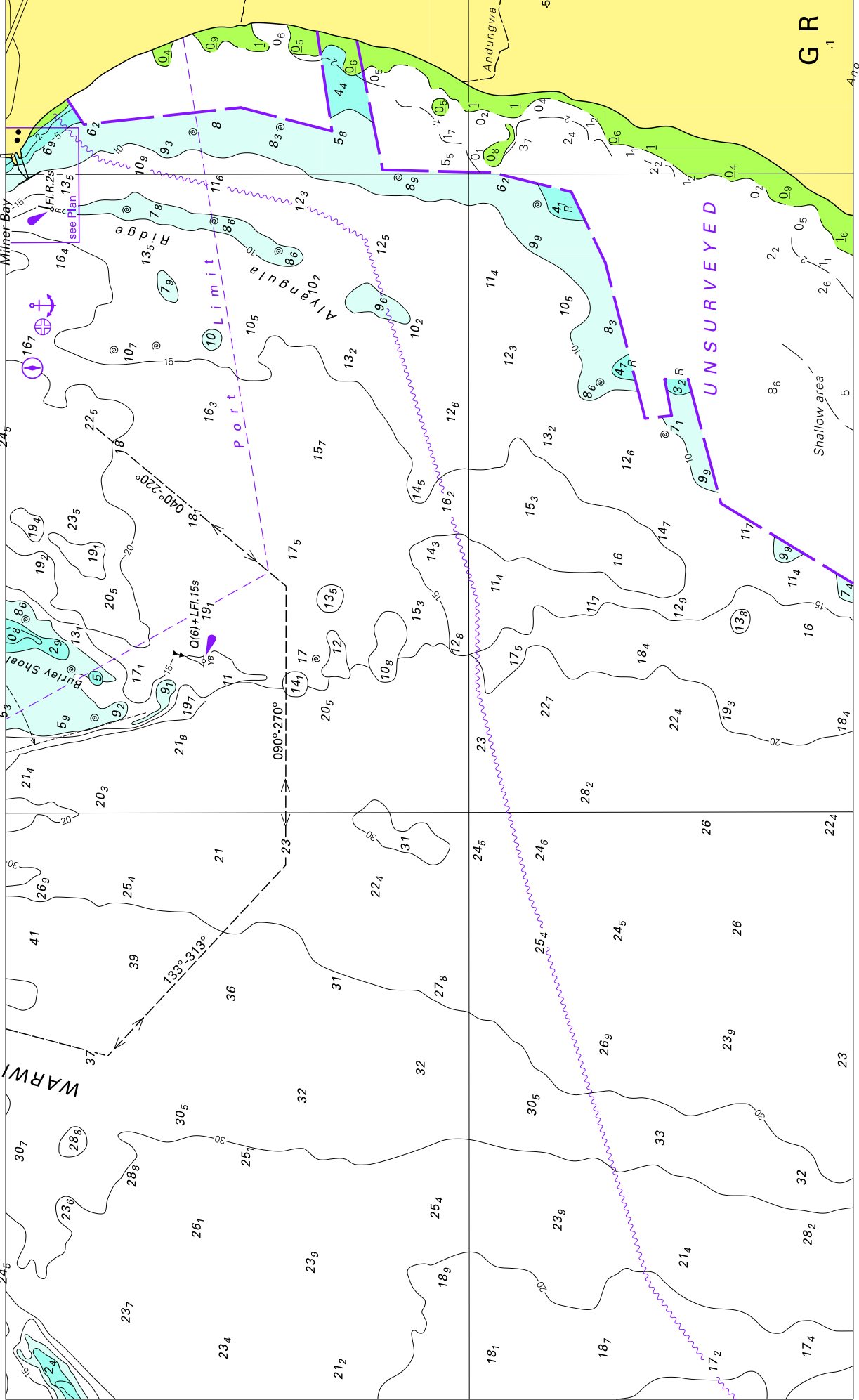
To accompany Australian Notice to Mariners 903/2010



© Commonwealth of Australia 2010
Block for Aus 387 (60.9 x 75.9mm)



To accompany Australian Notice to Mariners 905/2010

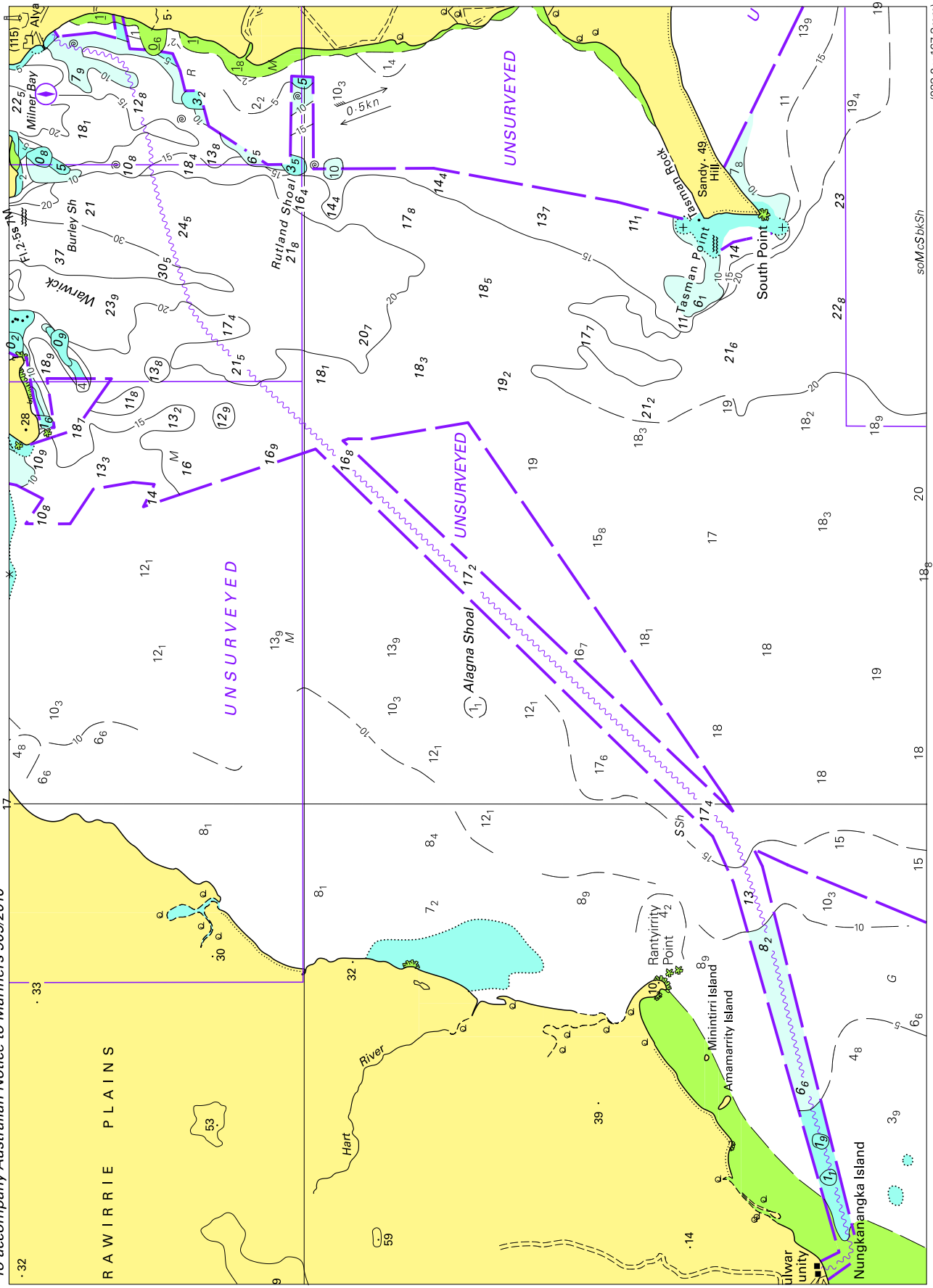


© Commonwealth of Australia 2010

Block for chart Aus 14

(263.6 x 159.6mm)

To accompany Australian Notice to Mariners 905/2010



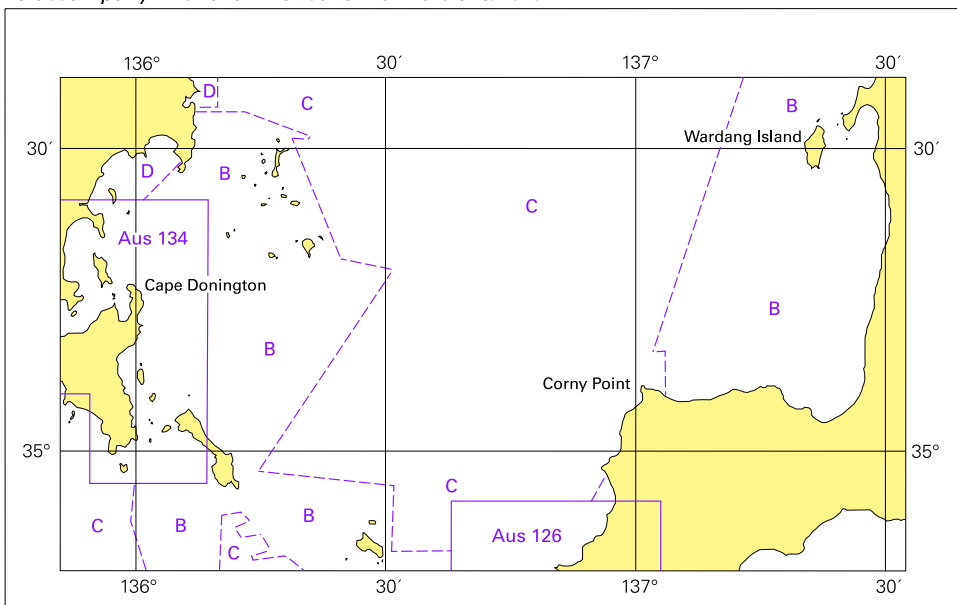
Block for chart Aus 305

© Commonwealth of Australia 2010

soMcSbkSh

(233.0 x 167.3mm)

To accompany Australian Notice to Mariners 913/2010



Block for Aus 776

© Commonwealth of Australia 2010

(126.4 x 79.5mm)