



13 August 2010

Edition 16

Australian Notices to Mariners are the authority for correcting Australian Charts and Publications

---

# AUSTRALIAN NOTICES TO MARINERS

Notices 822 – 887 

Published fortnightly by the Australian Hydrographic Service

Commodore R. NAIRN RAN  
*Hydrographer of Australia*

---

## SECTIONS.

- I. **Australian Notices to Mariners, including blocks and notes.**
- II. **Hydrographic Reports.**
- III. **Navigational Warnings.**

## SUPPLEMENTS.

- I. **Tracings**
- II. **Cumulative List of Australian Notices to Mariners.**
- III. **Temporary and Preliminary Notices in force.**
- IV. **Amendments to Admiralty List of Lights and Fog Signals (Vol K),  
Radio Signals (NP 281(2), 282, 283(2), 285, 286(4)) and Sailing  
Directions (NP 9, 13, 14, 15, 33, 34, 35, 36, 39, 44, 51, 60, 61, 62, 100, 136).**

---

© Commonwealth of Australia 2010

This work is copyright. Apart from any use permitted under the Copyright Act 1968, no part may be reproduced by any process, adapted, communicated or commercially exploited without prior written permission from The Commonwealth represented by the Australian Hydrographic Service.

## **IMPORTANT NOTICE**

This edition of Notices to Mariners includes all significant information affecting AHS products which the AHS has become aware of since the last edition. All reasonable efforts have been made to ensure the accuracy and completeness of the information, including third party information, on which these updates are based. The AHS regards third parties from which it receives information as reliable, however the AHS cannot verify all such information and errors may therefore exist. The AHS does not accept liability for errors in third party information.

---

## **GENERAL INSTRUCTIONS**

The substance of these notices should be inserted on the charts affected.

Bearings are referred to the true compass and are reckoned clockwise from North; those relating to lights are given as seen by an observer from seaward. Positions quoted in permanent notices relate to the horizontal datum for the chart(s). When preliminary or temporary notices affect multiple charts, positions will be provided in relation to only one horizontal datum and that datum will be specified. When the multiple charts do not have a common horizontal datum, mariners will be required to adjust the position(s) for those charts not on the specified datum. The range quoted for a light is its nominal range. Depths are with reference to the chart datum of each chart. Heights are above mean high water springs or mean higher high water, as appropriate.

The capital letter (P) or (T) after the number of any notice denotes a preliminary or temporary notice respectively, which are contained separately at the end of the permanent notices. A star (\*) adjacent to the number of a notice indicates that the notice is based on original information.

---

## **REPORTING OF DANGERS**

Mariners are particularly requested to notify the AUSTRALIAN HYDROGRAPHIC SERVICE, Locked Bag 8801 Wollongong, NSW 2500 (Fax 02-4223 6599, e-mail [Hydro.NTM@defence.gov.au](mailto:Hydro.NTM@defence.gov.au) or, alternatively by filling in and submitting the [Hydrographic Notes](#) forms located on the web site – [www.hydro.gov.au](http://www.hydro.gov.au)), immediately on the discovery of new dangers or suspected dangers to navigation. For changes or defects in aids to navigation notify AusSAR (Fax 02-6230 6868 or email [rccaus@amsa.gov.au](mailto:rccaus@amsa.gov.au)).

---

## **AUTHORISED USE**

Copies of Australian notices are available free of charge from the Australian Hydrographic Service (AHS) website ([www.hydro.gov.au](http://www.hydro.gov.au)) and through the eNotices (email) service ([www.hydro.gov.au/enotices/enotices.htm](http://www.hydro.gov.au/enotices/enotices.htm)).

Individual Notices may be copied for the purpose of inserting Notice substance on official charts and publications. Paper copies may be printed by chart agents and distributed to customers on a cost recovery basis. Participating chart agents are listed on the AHS website as providing a 'Paper Notices to Mariners' service ([www.hydro.gov.au/prodserv/distributors/distributors.htm](http://www.hydro.gov.au/prodserv/distributors/distributors.htm)). Copies of the notices may not be sold for profit without prior written agreement.

## NUMERICAL INDEX OF NOTICES TO MARINERS

**Edition No 16**

Notices	Aus Chart, INT Chart, ENC Cell, AHP
822.....	Aus 126, 150, 151, 152, 308, 316, 324, 325, 335, 336, 345, 364, 365, 366, 414, 415, 416, 417, 422, 423, 424, 426, 614, 714, 719, 745, 780, 781, 814, 815, 816, 817, 4635, 4643, 4644, 4723, 4725, AX 6033G, AZ 61109, 61209, 76109, AU340141, 416136, NP 62, 281(2)
823.....	Aus 198, 199
824.....	Aus 202
825.....	Aus 219
826.....	Aus 236
827.....	Aus 236, 237
828.....	Aus 237
829.....	Aus 235
830.....	Aus 240
831.....	Aus 249, 250, AX 0249E
832.....	Aus 831, 832
833.....	Aus 832
834.....	Aus 292, 376, 839
835.....	Aus 644
836.....	Aus 292, 293, 296, 299
837.....	Aus 376
838.....	Aus 4721, INT 721, AX 4721F
839.....	Aus 920
840.....	Aus 111, 117, AX 70117
841.....	Aus 139
842.....	Aus 780
843.....	Aus 169
844.....	Aus 179
845.....	Aus 154, 155
846.....	Aus 150
847(T).....	Aus 219, AU5219P3
848(T).....	Aus 230, 813, 814
849(T).....	Aus 230, AU5XX230
850(T).....	Aus 235, 236, AU427153
851(T).....	Aus 235
852(T).....	Aus 242, 243
853(T).....	Aus 247, AU5247P2
854(T).....	Aus 260, 367, 822, AX 0260E, 0367E, 0822E, 60260, AU423150
855(T).....	Aus 249, 250, 823, 824, AX 0249E, 0823E
856(T).....	Aus 256, 827, AU419146, 420146
857(T).....	Aus 614
858(T).....	Aus 4621, INT 621, AX 4621F, AU220150
859(T).....	Aus 831, 832, AU415145
860(T).....	Aus 309, 310, 316, 722, AX 0309F, 0310F, 72309, 72722, AU411129, 412129, 413129
861(T).....	Aus 322, 323, 324, 325, 326, 414, 415, 4722, INT 722, AX 0322F, 0415F, 4722F, AU316121, 317121, 318117, 318118, 318121, 319117, 319118, 319119, 417122, 419121
862(T).....	Aus 415, 4722, INT 722, AX 0415F, 4722F
863(T).....	Aus 414, 415, 4603, 4708, INT 603, 708, AX 0415F, 4603F, 4708F, AU130090
864(T).....	Aus 57, 58, 59
865(T).....	Aus 57, 58, 59, AU5XXX58
866(T).....	Aus 742, AU421116
867(T).....	Aus 742
868(T).....	Aus 64, 743, 744, AU422114
869(T).....	Aus 743, 744
870(T).....	Aus 334, 754, AX 0334E, 0754E, 66002, AU432115
871(T).....	Aus 113, AU5XX113
872(T).....	Aus 109, 110, 118, AU5XX109
873(T).....	Aus 342, 343, AX 0343E
874(T).....	Aus 343, AX 343E
875(T).....	Aus 343, 345, AX 0343E
876(T).....	Aus 776, AX 0776E, AU435136
877(T).....	Aus 777, AU435136
878(T).....	Aus 130, 138, 780, 781, AU435138, 5137X8
879(T).....	Aus 125, 780, 781
880(T).....	Aus 125, 126, 345, 346, 444, 780, AU436137
881(T).....	Aus 347
882(T).....	Aus 173, 795, AU444147
883(T).....	Aus 167, 168, AU5167X8
884 (T).....	Aus 154, 155, AU438144, 5XX154
885(T).....	Aus 154, AU5XX154
886(T).....	Aus 143, 155, AU438144
887(T).....	Aus 143, AU439145, 5143P1

## NUMERICAL INDEX OF CHARTS AFFECTED

## Edition No 16

Aus Chart	Notices	Aus Chart	Notices
Aus 57.....	864(T), 865(T)	Aus 342 .....	873(T)
Aus 58.....	864(T), 865(T)	Aus 343 .....	873(T), 874(T), 875(T)
Aus 59.....	864(T), 865(T)	Aus 345 .....	822, 875(T), 880(T)
Aus 64.....	868(T)	Aus 346 .....	880(T)
Aus 109.....	872(T)	Aus 347 .....	881(T)
Aus 110.....	872(T)	Aus 364 .....	822
Aus 111.....	840	Aus 365 .....	822
Aus 113.....	871(T)	Aus 366 .....	822
Aus 117.....	840	Aus 367 .....	854(T)
Aus 118.....	872(T)	Aus 376 .....	834, 837
Aus 125.....	879(T), 880(T)	Aus 414 .....	822, 861(T), 863(T)
Aus 126.....	822, 880(T)	Aus 415 .....	822, 861(T), 862(T), 863(T)
Aus 130.....	878(T)	Aus 416 .....	822
Aus 138.....	878(T)	Aus 417 .....	822
Aus 139.....	841	Aus 422 .....	822
Aus 143.....	886(T), 887(T)	Aus 423 .....	822
Aus 150.....	822, 846	Aus 424 .....	822
Aus 151.....	822	Aus 426 .....	822
Aus 152.....	822	Aus 444 .....	880(T)
Aus 154.....	845, 884(T), 885(T)	Aus 614 .....	822, 857(T)
Aus 155.....	845, 884(T), 886(T)	Aus 644 .....	835
Aus 167.....	883(T)	Aus 714 .....	822
Aus 168.....	883(T)	Aus 719 .....	822
Aus 169.....	843	Aus 722 .....	860(T)
Aus 173.....	882(T)	Aus 742 .....	866(T), 867(T)
Aus 179.....	844	Aus 743 .....	868(T), 869(T)
Aus 198.....	823	Aus 744 .....	868(T), 869(T)
Aus 199.....	823	Aus 745 .....	822
Aus 202.....	824	Aus 754 .....	870(T)
Aus 219.....	825, 847(T)	Aus 776 .....	876(T)
Aus 230.....	848(T), 849(T)	Aus 777 .....	877(T)
Aus 235.....	829, 850(T), 851(T)	Aus 780 .....	822, 842, 878(T), 879(T), 880(T)
Aus 236.....	826, 827, 850(T)	Aus 781 .....	822, 878(T), 879(T)
Aus 237.....	827, 828	Aus 795 .....	882(T)
Aus 240.....	830	Aus 813 .....	848(T)
Aus 242.....	852(T)	Aus 814 .....	822, 848(T)
Aus 243.....	852(T)	Aus 815 .....	822
Aus 247.....	853(T)	Aus 816 .....	822
Aus 249.....	831, 855(T)	Aus 817 .....	822
Aus 250.....	831, 855(T)	Aus 822 .....	854(T)
Aus 256.....	856(T)	Aus 823 .....	855(T)
Aus 260.....	854(T)	Aus 824 .....	855(T)
Aus 292.....	834, 836	Aus 827 .....	856(T)
Aus 293.....	836	Aus 831 .....	832, 859(T)
Aus 296.....	836	Aus 832 .....	832, 833, 859(T)
Aus 299.....	836	Aus 839 .....	834
Aus 308.....	822	Aus 920 .....	839
Aus 309.....	860(T)	Aus 4603 .....	863(T)
Aus 310.....	860(T)	Aus 4621 .....	858(T)
Aus 316.....	822, 860(T)	Aus 4635 .....	822
Aus 322.....	861(T)	Aus 4643 .....	822
Aus 323.....	861(T)	Aus 4644 .....	822
Aus 324.....	822, 861(T)	Aus 4708 .....	863(T)
Aus 325.....	822, 861(T)	Aus 4721 .....	838
Aus 326.....	861(T)	Aus 4722 .....	861(T), 862(T)
Aus 334.....	870(T)	Aus 4723 .....	822
Aus 335.....	822	Aus 4725 .....	822
Aus 336.....	822		

Aus Chart	Notices	ENC Cell	Notices
AX 0249E .....	831, 855(T)	AU130090.....	863(T)
AX 0260E .....	854(T)	AU220150.....	858(T)
AX 0309F .....	860(T)	AU316121.....	861(T)
AX 0310F .....	860(T)	AU317121.....	861(T)
AX 0322F .....	861(T)	AU318117.....	861(T)
AX 0334E .....	870(T)	AU318118.....	861(T)
AX 0343E .....	873(T), 874(T), 875(T)	AU318121.....	861(T)
AX 0367E .....	854(T)	AU319117.....	861(T)
AX 0415F .....	861(T), 862(T), 863(T)	AU319118.....	861(T)
AX 0754E .....	870(T)	AU319119.....	861(T)
AX 0776E .....	876(T)	AU340141.....	822
AX 0822E .....	854(T)	AU411129.....	860(T)
AX 0823E .....	855(T)	AU412129.....	860(T)
AX 4603F .....	863(T)	AU413129.....	860(T)
AX 4621F .....	858(T)	AU415145.....	859(T)
AX 4708F .....	863(T)	AU416136.....	822
AX 4721F .....	838	AU417122.....	861(T)
AX 4722F .....	861(T), 862(T)	AU419121.....	861(T)
AX 60260 .....	854(T)	AU419146.....	856(T)
AX 6033G .....	822	AU420146.....	856(T)
AX 66002 .....	870(T)	AU421116.....	866(T)
AX 70117 .....	840	AU422114.....	868(T)
AX 72309 .....	860(T)	AU423150.....	854(T)
AX 72722 .....	860(T)	AU427153.....	850(T)
AZ 61109 .....	822	AU432115.....	870(T)
AZ 61209 .....	822	AU435136.....	876(T), 877(T)
AZ 76109 .....	822	AU435138.....	878(T)
		AU436137.....	880(T)
		AU438144.....	884(T), 886(T)
		AU439145.....	887(T)
		AU444147.....	882(T)
INT Chart	Notices	AU5XXX58 .....	865(T)
INT 603 .....	863(T)	AU5XX109 .....	872(T)
INT 621 .....	858(T)	AU5XX113 .....	871(T)
INT 708 .....	863(T)	AU5137X8 .....	878(T)
INT 721 .....	838	AU5143P1 .....	887(T)
INT 722 .....	861(T), 862(T)	AU5XX154 .....	884(T), 885(T)
		AU5167X8 .....	883(T)
		AU5219P3 .....	847(T)
		AU5247P2 .....	853(T)
		AU5XX230 .....	849(T)

**822 AUSTRALIA - Product**

Australian Hydrographic Service (AA472602, AA476733, AA484936, AA485130, AA485698), UKHO (AA485579, AA485580)

**New Chart**

<i>Chart</i>	<i>Published</i>	<i>Title and description of amendments</i>	<i>Scale</i>	<i>Index Chart</i>	<i>Price</i>
Aus 126	4/6/2010	Australia - South Coast - Plans in South Australia (Sheet 5) Plans: Althorpe Islands 35° 05'.0 S - 35° 30'.5 S 136° 37'.8 E - 137° 03'.0 E Backstairs Passage 35° 35'.5 S - 36° 01'.0 S 137° 56'.0 E - 138° 21'.2 E <i>New chart providing improved coverage of Althorpe Islands and Backstairs Passage.</i>	1:75 000  1:75 000	Aus 5001	\$35.00

**New Edition**

<i>Chart</i>	<i>Published</i>	<i>Title and description of amendments</i>	<i>Scale</i>	<i>Index Chart</i>	<i>Price</i>
Aus 150	4/6/2010	Australia - South Coast - Victoria - Western Port 38° 11'.90 S - 38° 38'.40 S 144° 42'.83 E - 145° 36'.09 E Plans: Eastern Entrance to Western Port 38° 29'.43 S - 38° 34'.62 S 145° 19'.98 E - 145° 24'.09 E The Narrows 38°30'.66 S - 38° 31'.37 S 145° 21'.58 E - 145° 22'.28 E Rhyll 38°27'.62 S - 38° 28'.22 S 145° 18'.47 E - 145° 19'.17 E <i>New edition with amended port limits and general updating throughout.</i>	1:75 000  1:37 500  1:10 000  1:10 000	Aus 5001	\$35.00
Aus 151	4/6/2010	Australia - South Coast - Victoria - Western Port (Entrance and North Arm) 38° 11'.90 S - 38° 33'.92 S 145° 01'.38 E - 145° 36'.09 E <i>New edition with amended port limits and general updating throughout.</i>	1:37 500	Aus 5001	\$35.00
Aus 152	4/6/2010	Australia - South Coast - Victoria - Plans in Western Port Plans: Rutherford Inlet 38° 12'.87 S - 38° 15'.87 S 145° 17'.58 E - 145° 19'.58 E Crib Point Oil Terminal Jetty 38° 20'.62 S - 38° 21'.72 S 145° 12'.78 E - 145° 14'.38 E Hastings Bight 38° 17'.27 S - 38° 20'.27 S 145° 11'.63 E - 145° 14'.73 E Hanns Inlet 38° 21'.82 S - 38° 23'.67 S 145° 10'.98 E - 145° 14'.38 E <i>New edition with amended port limits and general updating throughout.</i>	1:15 000  1:12 000  1:10 000  1:7 500	Aus 5001	\$35.00

822 AUSTRALIA – Product (continued)

**New Edition**

Chart	Published	Title and description of amendments	Scale	Index Chart	Price
Aus 316	2/7/2010	Australia - North Coast - Northern Territory - Charles Point to Pelican Island 12° 12'.91 S - 15° 31'.34 S 128° 39'.33 E - 130° 38'.07 E <i>New edition with general updating throughout and horizontal datum referred to WGS84.</i>	1:300 000	Aus 5000	\$35.00
Aus 335	2/7/2010	Australia - West Coast - Western Australia - Cape Naturaliste to Point D'Entrecasteaux 33° 04'.74 S - 35° 40'.43 S 114° 07'.32 E - 116° 06'.09 E <i>New edition with general updating throughout and horizontal datum referred to WGS84.</i>	1:300 000	Aus 5001	\$35.00
Aus 336	2/7/2010	Australia - South Coast - Western Australia - Cape Leeuwin to King George Sound 34° 15'.43 S - 35° 53'.06 S 115° 07'.09 E - 118° 14'.92 E <i>New edition with general updating throughout and horizontal datum referred to WGS84.</i>	1:300 000	Aus 5001	\$35.00
Aus 614	2/7/2010	Australia - East Coast - Coral Sea - Diamond Passage 17° 00'.0 S - 17° 53'.2 S 150° 47'.4 E - 152° 15'.0 E <i>New edition incorporating latest surveys and updated for maritime boundaries.</i>	1:150 000	Aus 5001	\$35.00
Aus 745	4/6/2010	Australia - West Coast - Western Australia - North West Cape to Point Maud 38° 12'.87 S - 38° 15'.87 S 145° 17'.58 E - 145° 19'.58 E <i>New edition incorporating latest surveys, horizontal datum referred to WGS84 and updated for maritime boundaries.</i>	1:150 000	Aus 5001	\$35.00

**New Miscellaneous Chart**

Chart	Published	Title	Scale	Remarks
AX 6033G	13/8/2010	Australia - East Coast - Northern Australia Exercise Area GOP	1:1 200 000	Fleet use only.

**New Electronic Navigation Chart (Seafarer ENC)**

Cell Name	Released	Title
AU340141	August 2010	Victoria - Southern Ocean - Cell 1
AU416136	August 2010	Northern Territory - Approaches to Bing Bong

**New Chart to be published shortly**

Chart	Title	Scale	Expected Publication Date	Expected Stock Availability
Aus 324	Australia - North West Coast - Western Australia - Lacepede Islands to Eighty Mile Beach	1:300 000	13 August 2010	20 September 2010
Aus 325	Australia - North West Coast - Western Australia – Rowley Shoals to Bedout Islet	1:300 000	13 August 2010	20 September 2010

**Admiralty publication**

NP No	Title	Date	Remarks
NP 62	Pacific Islands Pilot Volume 3 (Twelfth Edition 2010).	12/8/2010	Volume 3 (Eleventh Edition 2006) is thereby cancelled.
NP 281(2)	Admiralty List of Radio Signals. Maritime Radio Stations The Americas, Far East and Oceania. Edition 2010/11.	5/8/2010	The 2009/10 edition is thereby cancelled.

822 AUSTRALIA – Product (continued)

**Chart permanently withdrawn**

<i>Chart</i>	<i>On publication of new edition</i>
Aus 150	Aus 150
Aus 151	Aus 151
Aus 152	Aus 152
Aus 316	Aus 316
Aus 335	Aus 335
Aus 336	Aus 336
Aus 614	Aus 614
Aus 745	Aus 745

**Chart permanently withdrawn without replacement**

<i>Chart</i>	<i>On publication of new chart</i>
AZ 61109	AX 6033G
AZ 61209	AX 6033G
AZ 76109	AX 6033G

**Chart to be permanently withdrawn without replacement**

<i>Chart</i>	<i>On publication of new chart</i>
Aus 308	Aus 714 and Aus 719
Aus 345	Aus 780 and Aus 781
Aus 364	Aus 814
Aus 365	Aus 815 and Aus 816
Aus 366	Aus 816 and Aus 817
Aus 414	Aus 4723
Aus 415	Aus 4723
Aus 416	Aus 4725
Aus 417	Aus 4725
Aus 422	Aus 4644
Aus 423	Aus 4643
Aus 424	Aus 4635
Aus 426	Aus 4635

*Note:* It is anticipated that the above new charts will be published by Jan 2011.

For further details refer to the AHS website at [www.hydro.gov.au](http://www.hydro.gov.au) for new edition and new chart stock arrival information.

When placing orders with a chart agent, mariners should advise whether their order pertains to the current edition or the new edition.

**823\* AUSTRALIA - NEW SOUTH WALES - Botany Bay - Kurnell to La Perouse Point - Cables**

Sydney Ports Corporation (AA483849, AA483850)

**Aus 198 [779/2010]**

Insert accompanying block 33° 59'.8 S 151° 13'.5 E

**Aus 199 [644/2010]**

Insert accompanying block 33° 59'.8 S 151° 13'.5 E

**824\* AUSTRALIA - NEW SOUTH WALES - Port Jackson - Blackwattle Bay - Buoy established**

NSW Maritime (AA483333, AA483334)

**Aus 202 [691/2010]**

Insert special conical buoy, without topmark 33° 52'.348 S 151° 11'.214 E

Delete depth, 4.4m 33° 52'.34 S 151° 11'.23 E

**825\* AUSTRALIA - NEW SOUTH WALES - Port Macquarie - Light removed**

NSW Maritime (AA483333, AA483334)

**Aus 219 (plan, Port Macquarie) [648/2010]**

Delete light 31° 25'.63 S 152° 54'.71 E

dashed and continuous line, with legend, emanating  
from light 31° 25'.63 S 152° 54'.71 E**Aus 219 (plan, Hastings River)**

Delete light 31° 25'.63 S 152° 54'.71 E

dashed and continuous line, with legend, emanating  
from light 31° 25'.63 S 152° 54'.71 E**826\* AUSTRALIA - QUEENSLAND - Moreton Bay - Redland Bay - Light beacons**

Maritime Safety Queensland Notice 641/2010 (AA483693)

**Aus 236 [735/2010]**

Insert accompanying block 27° 38'.0 S 153° 19'.0 E

**827\* AUSTRALIA - QUEENSLAND - Moreton Bay - Fisherman Islands - Light buoys established**

Maritime Safety Queensland 654/2010 (AA484380, AA484350 - AA484352)

**Aus 236 [826/2010]**

Insert	special spar light buoy, <i>Fl. Y.3s</i> , without topmark	27° 21'.19 S	153° 11'.97 E
	special spar light buoy, <i>Fl. Y.3s</i> , without topmark	27° 21'.03 S	153° 11'.85 E
	special cylindrical light buoy, <i>Fl. Y.3s</i> , with topmark	27° 20'.67 S	153° 11'.45 E

Delete	depth, 2 <sub>9</sub> m	27° 20'.7 S	153° 11'.5 E
--------	-------------------------	-------------	--------------

**Aus 237 [651/2010]**

Insert	special cylindrical light buoy, <i>Fl. Y.3s</i> , with topmark	27° 21'.495 S	153° 12'.037 E
	special spar light buoy, <i>Fl. Y.3s</i> , without topmark	27° 21'.351 S	153° 12'.040 E
	special spar light buoy, <i>Fl. Y.3s</i> , without topmark	27° 21'.270 S	153° 12'.020 E
	special spar light buoy, <i>Fl. Y.3s</i> , without topmark	27° 21'.192 S	153° 11'.971 E
	special spar light buoy, <i>Fl. Y.3s</i> , without topmark	27° 21'.133 S	153° 11'.933 E
	special spar light buoy, <i>Fl. Y.3s</i> , without topmark	27° 21'.087 S	153° 11'.897 E
	special spar light buoy, <i>Fl. Y.3s</i> , without topmark	27° 21'.034 S	153° 11'.854 E
	special spar light buoy, <i>Fl. Y.3s</i> , without topmark	27° 20'.975 S	153° 11'.802 E
	special spar light buoy, <i>Fl. Y.3s</i> , without topmark	27° 20'.909 S	153° 11'.746 E
	special spar light buoy, <i>Fl. Y.3s</i> , without topmark	27° 20'.790 S	153° 11'.620 E
	special spar light buoy, <i>Fl. Y.3s</i> , without topmark	27° 20'.732 S	153° 11'.534 E
	special cylindrical light buoy, <i>Fl. Y.3s</i> , with topmark	27° 20'.668 S	153° 11'.448 E

**828\* AUSTRALIA - QUEENSLAND - Brisbane River - Whyte Island - Light beacon**

Maritime Safety Queensland Notice 618/2010 (AA482656)

**Aus 237 [827/2010]**

Move	light beacon	27° 23'.98 S	153° 09'.27 E
	to	27° 23'.984 S	153° 09'.282 E

Delete	depth, 2 <sub>7</sub> m	27° 23'.96 S	153° 09'.30 E
--------	-------------------------	--------------	---------------

**829\* AUSTRALIA - QUEENSLAND - Pumicestone Channel - Nav aids**

Maritime Safety Queensland (AA482712, AA482713)

**Aus 235 [735/2010]**

Insert	port lateral spar light buoy, <i>Fl. R.2.5s</i> , without topmark	26° 48'.64 S	153° 07'.48 E
	port lateral cylindrical light buoy, <i>Fl. R.2.5s</i> , without topmark	26° 48'.38 S	153° 07'.76 E

Amend	light buoy to <i>Fl. R.2.5s</i>	26° 48'.5 S	153° 07'.9 E
-------	---------------------------------	-------------	--------------

Delete	light buoy	26° 48'.4 S	153° 07'.8 E
	light beacon	26° 48'.6 S	153° 07'.4 E

**830\* AUSTRALIA - QUEENSLAND - Tin Can Inlet - Bullock Point - Light beacon established**

Maritime Safety Queensland Notice 637/2010 (AA483742, AA484937 - AA484939)

**Aus 240 [652/2010]**

Insert	special light beacon, <i>Fl. Y.4s</i> , with topmark	25° 49'.61 S	153° 03'.23 E
--------	--	--------------	---------------

**831\* AUSTRALIA - QUEENSLAND - Mackay - Buoy**

Maritime Safety Queensland (AA479932, AA479933)

**Aus 249 [737/2010]**

Substitute	special cylindrical buoy, without topmark for mooring buoy	21° 07'.02 S	149° 13'.80 E
------------	--	--------------	---------------

**Aus 250 (plan, Mackay Harbour) [736/2010]**

Substitute	special cylindrical buoy, without topmark for mooring buoy	21° 07'.02 S	149° 13'.80 E
------------	--	--------------	---------------

**AX 0249E [737/2010]**

Substitute	special cylindrical buoy, without topmark for mooring buoy	21° 07'.02 S	149° 13'.80 E
------------	--	--------------	---------------

**832\* AUSTRALIA - QUEENSLAND - Cape Flattery - Anchorage**

Maritime Safety Queensland Notice 626/2010 (AA483375)

**Aus 831 [357/2010]**

Insert	anchor berth, desig <i>CF</i> , centred on	15° 00'.9 S	145° 27'.9 E
--------	--	-------------	--------------

Delete	depth, 34m	15° 01'.1 S	145° 27'.7 E
--------	------------	-------------	--------------

**Aus 832 [1218/2009]**

Insert	anchor berth, desig <i>CF</i> , centred on	15° 00'.9 S	145° 27'.9 E
--------	--	-------------	--------------

Delete	depth, 34m	15° 01'.1 S	145° 27'.7 E
--------	------------	-------------	--------------

**833\* AUSTRALIA - QUEENSLAND - Great Barrier Reef - Ribbon Reef No 10 - Rock**

T Jackson (AA484388)

**Aus 832 [832/2010]**

Insert	underwater rock enclosed by danger circle, with legend <i>Rep (2010)</i>	14° 51'.76 S	145° 40'.38 E
--------	--	--------------	---------------

**834\* AUSTRALIA - TORRES STRAIT - Wyborn Reef - Depth**HMAS *Benalla* (AA483362)**Aus 292 [359/2010]**

Insert	depth, 14 <sub>9</sub> m, enclosed by contour	10° 46'.44 S	142° 43'.20 E
--------	---	--------------	---------------

Delete	depth, 16 <sub>1</sub> m	10° 46'.5 S	142° 43'.3 E
--------	--------------------------	-------------	--------------

**Aus 376 [656/2010]**

Substitute	depth, 14 <sub>9</sub> m, for depth, 15 <sub>4</sub> m, and extend contour SE to enclose	10° 46'.4 S	142° 43'.2 E
------------	--	-------------	--------------

**Aus 839 [360/2010]**

Insert	depth, 14 <sub>9</sub> m, enclosed by contour	10° 46'.44 S	142° 43'.20 E
--------	---	--------------	---------------

Delete	depth, 16 <sub>1</sub> m	10° 46'.5 S	142° 43'.3 E
--------	--------------------------	-------------	--------------

**835\* PAPUA NEW GUINEA - Salamaua Harbour - ZOC diagram**

Australian Hydrographic Service (AA483882)

**Aus 644 (plan, Natter Bay) [477/2010]**

Delete Salamaua Harbour ZOC diagram in NE corner

**836\* AUSTRALIA - QUEENSLAND - Normanby Sound - Pilot boarding place**

Maritime Safety Queensland Notice 631/2010 (AA483373)

**Aus 292 [834/2010]**

Insert	pilot boarding place, with magenta legend <i>Normanby Sound</i> , centred on	10° 34'.7 S	142° 08'.7 E
--------	--	-------------	--------------

**Aus 293 [412/2010]**

Insert	pilot boarding place, with magenta legend <i>Normanby Sound</i> , centred on	10° 34'.8 S	142° 08'.6 E
--------	--	-------------	--------------

Delete	depth, 11m	10° 34'.8 S	142° 08'.6 E
--------	------------	-------------	--------------

**Aus 296 [823/2009]**

Insert	pilot boarding place, with magenta legend <i>Normanby Sound</i> , centred on	10° 34'.8 S	142° 08'.6 E
--------	--	-------------	--------------

**Aus 299 [940/2009]**

Insert	pilot boarding place, with magenta legend <i>Normanby Sound</i> , centred on	10° 34'.7 S	142° 08'.7 E
--------	--	-------------	--------------

**837\* INDONESIA - Irian Jaya - Lights**

Indonesian Notice 14/132-134/2010 (AA482619), UKHO (AA482620)

**Aus 376 [834/2010]**

Insert	light, <i>Fl(2)10s 44m 27M</i>	9° 07'.44 S	141° 01'.13 E
	light beacon, <i>Fl.6s 20m 15M</i> , without topmark	9° 12'.23 S	140° 56'.89 E

Delete	light beacon	9° 08'.0 S	141° 01'.0 E
	depth, <u>0</u> 2m	9° 12'.0 S	140° 57'.0 E

**838 INDONESIA - Gunung Api - Light established**

BA Notice 30/3638/2010 (AA482307)

**Aus 4721 (INT 721) [788/2010]**

Insert	light, <i>Fl.12M</i>	6° 38'.4 S	126° 39'.5 E
--------	----------------------	------------	--------------

**AX 4721F [788/2010]**

Insert	light, <i>Fl.12M</i>	6° 38'.4 S	126° 39'.5 E
--------	----------------------	------------	--------------

**839\* INDIAN OCEAN - Christmas Island - Flying Fish Cove - Mooring buoy**

Australian Hydrographic Service (AA484442)

**Aus 920 (plan, Flying Fish Cove) [NE 14/8/2009]**

Move	mooring buoy, with legend <i>South Breast</i>	10° 25'.52 S	105° 40'.25 E
	to	10° 25'.503 S	105° 40'.251 E

**840\* AUSTRALIA - WESTERN AUSTRALIA - Cockburn Sound - Garden Island - Foul ground**

Department of Defence (AA484126, AA484127)

**Aus 111 (inset, Sulphur Bay) [422/2010]**

Insert #, centred on 32° 10'.612 S 115° 40'.703 E

**Aus 117 [422/2010]**

Insert #, centred on 32° 10'.612 S 115° 40'.703 E

**AX 70117 [422/2010]**

Insert #, centred on 32° 10'.612 S 115° 40'.703 E

**841\* AUSTRALIA - SOUTH AUSTRALIA - Macdonnell Sound - Depths**

Australian Hydrographic Service (AA482168)

**Aus 139 (plan, Macdonnell Sound) [797/2010]**

Insert	depth, 8m	35° 05'.58 S	137° 53'.48 E
	depth, 6 <sub>2</sub> m	35° 03'.98 S	137° 55'.34 E
	contour, between	35° 02'.93 S	137° 45'.42 E
		35° 03'.00 S	137° 45'.50 E
		35° 03'.07 S	137° 45'.49 E
	contour, between	35° 02'.89 S	137° 45'.78 E
		35° 02'.97 S	137° 45'.70 E
		35° 03'.05 S	137° 45'.73 E
	depth, 7 <sub>5</sub> m, and extend contour E to enclose	35° 02'.50 S	137° 55'.43 E
	depth, 7 <sub>2</sub> m	34° 58'.01 S	137° 54'.81 E
	depth, 6 <sub>9</sub> m, and extend contour E to enclose	34° 57'.15 S	137° 55'.07 E
	depth, 6 <sub>9</sub> m	34° 55'.58 S	137° 55'.23 E
	depth, 0 <sub>5</sub> m	34° 54'.15 S	137° 50'.38 E

Substitute	depth, 6 <sub>8</sub> m, for depth, 7 <sub>1</sub> m	35° 02'.9 S	137° 55'.4 E
	depth, 9 <sub>1</sub> m, for depth, 9 <sub>5</sub> m	35° 01'.9 S	137° 55'.2 E

Delete	depth, 8 <sub>5</sub> m	35° 05'.4 S	137° 53'.4 E
	depth, 6 <sub>7</sub> m	35° 04'.0 S	137° 55'.3 E
	contour, between	35° 02'.9 S	137° 45'.4 E
		35° 02'.9 S	137° 45'.8 E
	contour, between	35° 03'.1 S	137° 45'.5 E
		35° 03'.0 S	137° 45'.7 E
	depth, 7 <sub>9</sub> m	35° 02'.5 S	137° 55'.3 E
	depth, 7 <sub>6</sub> m	34° 57'.9 S	137° 54'.8 E
	depth, 7 <sub>9</sub> m	34° 57'.0 S	137° 55'.0 E

**842\* AUSTRALIA - SOUTH AUSTRALIA - Porpoise Head to Tunk Head - Depth**

UKHO (AA483958)

**Aus 780 [798/2010]**Insert depth, 7<sub>5</sub>fm, and extend contour S to enclose 35° 39'.70 S 138° 19'.75 E

**843\* AUSTRALIA - TASMANIA - Georges Bay - Pelican Point - Buoys***Former Notice - 131(T)/2008 is cancelled*

Marine and Safety Tasmania (AA480133, AA483710, AA483711)

**Aus 169 (plan, Georges Bay) [1432/2009]**

Insert	port lateral spar buoy, without topmark	41° 17'.374 S	148° 19'.462 E
	starboard lateral spar buoy, without topmark	41° 17'.424 S	148° 19'.372 E
Delete	buoy	41° 17'.19 S	148° 19'.49 E
	buoy	41° 17'.01 S	148° 19'.74 E
	depth, 0 <sub>2</sub> m	41° 17'.34 S	148° 19'.46 E

**844\* AUSTRALIA - TASMANIA - Lady Barron - Beacon removed**

Marine and Safety Tasmania (AA466693)

**Aus 179 (plan, Approaches to Lady Barron) [493/2009]**

Delete	beacon	40° 12'.62 S	148° 14'.20 E
	dashed and continuous line with legend, emanating from beacon	40° 12'.62 S	148° 14'.20 E

**845\* AUSTRALIA - VICTORIA - Port Phillip - Point Gellibrand - Wreck eastwards**

Victorian Notice 76/2010 (AA483175)

**Aus 154 [NE 21/5/2010]**

Insert	depth, 6 <sub>6</sub> , enclosed by danger circle with legend, <i>Wk</i>	37° 52'.331 S	144° 54'.931 E
Delete	depth, 7 <sub>9</sub> m	37° 52'.32 S	144° 54'.95 E

**Aus 155 [552/2010]**

Insert	depth, 6 <sub>6</sub> , enclosed by danger circle with legend, <i>Wk</i>	37° 52'.331 S	144° 54'.931 E
--------	--	---------------	----------------

**846\* AUSTRALIA - VICTORIA - Western Port - Chart limit**

Australian Hydrographic Service (AA484496)

**Aus 150 [801/2010]**

Amend	corner coordinate to 38°11.90' S 145°36.09' E	38° 12'.0 S	145° 36'.0 E
-------	---	-------------	--------------

**Aus 150 (plan, The Narrows)]**

Amend	corner coordinate to 38°30.66' S 145°22.28' E	38° 30'.67 S	145° 22'.25 E
-------	---	--------------	---------------

**847(T)/2010 AUSTRALIA - NEW SOUTH WALES - Hastings River - Port Macquarie - Light discontinued**

*Former Notice* - 50(T)/2010 is cancelled  
NSW Maritime (AA483333)

The light (31° 25'.61 S 152° 54'.87 E) has been temporarily discontinued and will be replaced with a new sector light.

**Chart temporarily affected - Aus 219 - AU5219P3****848(T)/2010 AUSTRALIA - QUEENSLAND - Point Danger to Point Lookout - Scientific instruments**

*Former Notice* - 664(T)/2010 is cancelled  
Maritime Safety Queensland Notice 676(T)/2010 (AA485531)

Special light buoys, *Fl(5)Y.20s*, exist in positions (WGS84 datum):

28° 10'.82 S 153° 34'.58 E  
27° 58'.01 S 153° 26'.52 E  
27° 29'.49 S 153° 37'.84 E.

Mariners are not to use these buoys as moorings.

**Chart temporarily affected - Aus 230 - Aus 813 - Aus 814****849(T)/2010 AUSTRALIA - QUEENSLAND - Southport - Dredging operations**

*Date* - Until 22 October 2010  
Maritime Safety Queensland Notice 662(T)/2010 (AA484802)

The dredge *Port Frederick* and *Faucon* are conducting dredging operations in the West Crab Island Channel (27° 54'.2 S 153° 24'.5 E).

The dredge will transport the spoil close to shore off South Stradbroke Island and Surfers Paradise.

The dredges will monitor VHF Ch 16 and Ch 67.

Mariners are advised to navigate with caution in the area.

**Chart temporarily affected - Aus 230 - AU5XX230****850(T)/2010 AUSTRALIA - QUEENSLAND - Flinders Reef - Mooring maintenance**

*Date* - Until 31 August 2010  
Maritime Safety Queensland Notice 650(T)/2010 (AA484382)

MT *Arnhem* and barge *V83* are conducting mooring maintenance at Flinders Reef (26° 58'.55 S 153° 29'.00 E).

Vessels will display appropriate symbols and lights and maintain a listening watch on VHF Ch 12.

All vessels are requested to remain at least 200m clear of the maintenance works.

**Chart temporarily affected - Aus 235 - Aus 236 - AU427153****851(T)/2010 AUSTRALIA - QUEENSLAND - Moreton Bay - North Banks - Scientific instrument**

Maritime Safety Queensland Notice 657(T)/2010 (AA484735)

A special light buoy, *Fl(5)Y.20s*, exists in position 26° 54'.02 S 153° 16'.94 E.

Mariners are not to use the buoy as a mooring.

**Chart temporarily affected - Aus 235**

**852(T)/2010 AUSTRALIA - QUEENSLAND - Bundaberg - Depth information***Former Notice - 713(T)/2010 is cancelled*

Maritime Safety Queensland Notice 649(T)/2010 (AA484655)

Available depths as at 2 August 2010:

	<i>Metres</i>
Sea Reach	9.4
Middle Reach	9.0
Inner Reach	9.0
Swing Basin	7.4
* Oil Berth	8.6
BST Berth	10.2

The deep draught departure channel from the BST berth to Middle Reach has a depth of 9.0m.

\* Indicates revised entry.

**Chart temporarily affected - Aus 242 - Aus 243****853(T)/2010 AUSTRALIA - QUEENSLAND - Rosslyn Bay - Harbour works***Date - Until 28 December 2010*

Maritime Safety Queensland Notice 664(T)/2010 (AA484722)

Works associated with the demolition and reconstruction of the boat ramp (23° 09'.83 S 150° 47'.33 E) are in progress. The boat ramp is closed until further notice.

**Chart temporarily affected - Aus 247 - AU5247P2****854(T)/2010 AUSTRALIA - QUEENSLAND - Shoalwater Bay - Live firing***Former Notice - 761(T)/2010 is cancelled**Date - Until 11 September 2010*

Maritime Safety Queensland Notice 638(T)/2010 (AA484708)

Live firing activities will be conducted in the Shoalwater Bay training area during the period 23 August to 10 September 2010.

A marine danger area extends to all waters within a 3M radius of position 22° 23'.0 S 150° 30'.3 E.

All waters, creeks, beaches and other areas within the declared marine danger area are not available for access.

**Chart temporarily affected - Aus 260 - Aus 367 - Aus 822 – AX 0260E – AX 0367E – AX 0822E – AX 60260 - AU423150****855(T)/2010 AUSTRALIA - QUEENSLAND - Hay Point to Bailey Islet - Scientific instruments***Former Notice - 176(T)/2010 is cancelled*

Maritime Safety Queensland Notice 676(T)/2010 (AA485531)

Special light buoys, *F(5)Y.20s*, exist in positions:

21° 16'.30 S 149° 18'.58 E

21° 02'.37 S 149° 32'.75 E.

Mariners are not to use these buoys as moorings.

**Chart temporarily affected - Aus 249 - Aus 250 - Aus 823 - Aus 824 – AX 0249E – AX 0823E****856(T)/2010 AUSTRALIA - QUEENSLAND - Halifax Bay - Light buoys recovered***Former Notice - 226(T)/2010 is cancelled*

Maritime Safety Queensland Notice 131(T)/2010 (AA455251)

Cancel this notice on receipt.

**Chart formerly affected - Aus 256 - Aus 827 - AU419146 - AU420146**

**857(T)/2010 AUSTRALIA - CORAL SEA - Lihou Reef - Shoals charted**

*Former Notice* - 653(P)/2001 is cancelled  
Australian Hydrographic Service (AA476733)

Cancel this notice on receipt.

**Chart formerly affected - Aus 614**

**858(T)/2010 AUSTRALIA - CORAL SEA - Lihou Reef - Light buoy off station northeastwards**

Australian Bureau of Meteorology (AA485664)

The light buoy, *Fl* (14° 48'.0 S 153° 35'.0 E), is drifting and currently in position 14° 49'.19 S 152° 55'.84 E (10 Aug 2010).

**Chart temporarily affected - Aus 4621 (INT 621) – AX 4621F - AU220150**

**859(T)/2010 AUSTRALIA - QUEENSLAND - Cape Flattery - Wreck salvaged**

*Former Notice* - 787(T)/2009 is cancelled  
Maritime Safety Queensland (AA484737)

Cancel this notice on receipt.

**Chart formerly affected - Aus 831 - Aus 832 - AU415145**

**860(T)/2010 AUSTRALIA - NORTHERN TERRITORY - Evans Shoal to Lorna Shoal - Scientific instruments**

*Date* - Until 28 August 2010  
RV *Solander* (AA485144)

Subsurface scientific instruments exist in the following positions:

10° 23'.75 S 129° 36'.78 E  
11° 38'.36 S 129° 50'.14 E  
12° 18'.76 S 129° 57'.87 E.

**Chart temporarily affected - Aus 309 - Aus 310 - Aus 316 - Aus 722 – AX 0309F – AX 0310F – AX 72309 – AX 72722 - AU411129 - AU412129 - AU413129**

**861(T)/2010 AUSTRALIA - WESTERN AUSTRALIA - Rowley Shoals - Seismic survey completed**

*Former Notice* - 720(T)/2010 is cancelled  
Australian Maritime Safety Authority (AA485172), Petroleum Geo-Services (AA474666)

Cancel this notice on receipt.

**Chart formerly affected - Aus 322 - Aus 323 - Aus 324 - Aus 325 - Aus 326 - Aus 414 - Aus 415 - Aus 4722 (INT 722) – AX 0322F – AX 0415F – AX 4722F - AU316121 - AU317121 - AU318117 - AU318118 - AU318121 - AU319117 - AU319118 - AU319119 - AU417122 - AU419121**

**862(T)/2010 AUSTRALIA - WESTERN AUSTRALIA - Lacepede Islands - Scientific instrument northwestwards recovered**

*Former Notice* - 456(T)/2010 is cancelled  
CSIRO (AA466380, AA466381)

Cancel this notice on receipt.

**Chart formerly affected - Aus 415 - Aus 4722 (INT 722) – AX 0415F – AX 4722F**

**863(T)/2010 AUSTRALIA - WESTERN AUSTRALIA - Dampier - Seismic survey northwestwards completed***Former Notice* - 520(T)/2010 is cancelled

Australian Maritime Safety Authority (AA485172), Fugro (AA468833 - AA468835)

Cancel this notice on receipt.

**Chart formerly affected - Aus 414 - Aus 415 - Aus 4603 (INT 603) - Aus 4708 (INT 708) – AX 0415F – AX 4603F – AX 4708F - AU130090****864(T)/2010 AUSTRALIA - WESTERN AUSTRALIA - Dampier - Holden Point - Dredging operations completed; exclusion zone removed***Former Notice* - 260(T)/2008 is cancelled

Dampier Port Authority Notices 3/2008 &amp; 6/2008 (AA316310, AA316886, AA316887),

*Note:* New editions of Aus 57 and Aus 58, plus new charts Aus 59 and Aus 60 which are being compiled will incorporate the new information.

Cancel this notice on receipt.

**Chart formerly affected - Aus 57 - Aus 58 - Aus 59****865(T)/2010 AUSTRALIA - WESTERN AUSTRALIA - Dampier - Dredging operations***Former Notice* - 393(T)/2010 is cancelled

Dampier Port Authority Notice 11/2010 (AA463724)

Cancel this notice on receipt.

**Chart formerly affected - Aus 57 - Aus 58 - Aus 59 - AU5XXX58****866(T)/2010 AUSTRALIA - WESTERN AUSTRALIA - Regnard Bay - Scientific instruments recovered***Former Notice* - 277(T)/2010 is cancelled

Department of Transport Notice 34A/2010 (AA458922)

Cancel this notice on receipt.

**Chart formerly affected - Aus 742 - AU421116****867(T)/2010 AUSTRALIA - WESTERN AUSTRALIA - Barrow Island - Scientific instrument***Date* - Until 11 August 2011

Department of Transport Notice 82/2010 (AA484721)

A scientific instrument marked by a special light buoy, *Fl(5)Y.20s*, exists in position 20° 41'.11 S 115° 21'.07 E (WGS84 datum).**Chart temporarily affected - Aus 742****868(T)/2010 AUSTRALIA - WESTERN AUSTRALIA - Onslow - Drilling operations completed***Former Notice* - 140(T)/2010 is cancelled

Department for Transport WA Notice 10A/2010 (AA451323)

Cancel this notice on receipt.

**Chart formerly affected - Aus 64 - Aus 743 - Aus 744 - AU422114**

**869(T)/2010 AUSTRALIA - WESTERN AUSTRALIA - North Muiron Island to Locker Island - Scientific instruments***Former Notice* - 182(T)/2010 is cancelled*Date* - Until 28 February 2011

MetOcean Engineers (AA485655)

Subsurface scientific instruments exist in the following positions (WGS84 datum):

21° 33'.23 S 114° 15'.25 E

21° 32'.60 S 114° 24'.10 E

21° 39'.19 S 114° 38'.65 E

21° 43'.10 S 114° 49'.39 E.

**Chart temporarily affected - Aus 743 - Aus 744****870(T)/2010 AUSTRALIA - WESTERN AUSTRALIA - Alkimos Reef - Scientific instrument recovered***Former Notice* - 1337(T)/2009 is cancelled

Cardo Lawson Treloar (AA439271)

Cancel this notice on receipt.

**Chart formerly affected - Aus 334 - Aus 754 – AX 0334E – AX 0754E – AX 66002 - AU432115****871(T)/2010 AUSTRALIA - WESTERN AUSTRALIA - Fremantle - Rous Head - Pipeline**

Fremantle Ports Notice 8(T)/2010 (AA485508)

A floating pipeline exists in the vicinity of 32° 03'.06 S 115° 43'.73 E.

Mariners are advised to navigate with caution in the area.

**Chart temporarily affected - Aus 113 - AU5XX113****872(T)/2010 AUSTRALIA - WESTERN AUSTRALIA - King George Sound - North Channel to Barker Bay - Scientific instruments recovered***Former Notice* - 333(T)/2009 is cancelled

Albany Port Authority Notice 2(T)/2009 (AA391679)

Cancel this notice on receipt.

**Chart formerly affected - Aus 109 - Aus 110 - Aus 118 - AU5XX109****873(T)/2010 AUSTRALIA - SOUTH AUSTRALIA - Whidbey Isles - Scientific instrument***Former Notice* - 1082(T)/2009 is cancelled*Date* - Until 1 September 2011

South Australian Research and Development Institute (AA485627)

A subsurface scientific instrument exists in position 34° 55'.88 S 135° 00'.62 E (WGS84 datum).

**Chart temporarily affected - Aus 342 - Aus 343 – AX 0343E****874(T)/2010 AUSTRALIA - SOUTH AUSTRALIA - Neptune Islands - Scientific instrument recovered***Former Notice* - 1208(T)/2008 is cancelled

Department for Transport, Energy and Infrastructure SA (AA485566)

Cancel this notice on receipt.

**Chart formerly affected - Aus 343 – AX 0343E**

**875(T)/2010 AUSTRALIA - SOUTH AUSTRALIA - North Neptunes - Scientific instruments recovered***Former Notice* - 1396(T)/2009 is cancelled

South Australian Research and Development Institute (AA485627)

Cancel this notice on receipt.

**Chart formerly affected - Aus 343 - Aus 345 – AX 0343E****876(T)/2010 AUSTRALIA - SOUTH AUSTRALIA - Rosalind Shoal - Scientific instrument***Date* - Until 30 October 2010

South Australian Research and Development Institute (AA484984, AA485034)

A subsurface scientific instrument exists in position 34° 47'.44 S 136° 29'.68 E.

**Chart temporarily affected - Aus 776 – AX 0776E - AU435136****877(T)/2010 AUSTRALIA - SOUTH AUSTRALIA - Lipson Island - Scientific instrument***Date* - Until 19 September 2010

Department for Transport, Energy and Infrastructure SA Notice 35/2010 (AA484741)

A scientific instrument marked by a special light buoy, *Fl. Y.3s*, exists in position 34° 15'.00 S 136° 16'.32 E.**Chart temporarily affected - Aus 777 - AU435136****878(T)/2010 AUSTRALIA - SOUTH AUSTRALIA - Largs Bay - Light buoy re-established***Former Notice* - 456(T)/2009 is cancelled

Department for Transport, Energy and Infrastructure SA (AA485566)

Cancel this notice on receipt.

**Chart formerly affected - Aus 130 - Aus 138 - Aus 780 - Aus 781 - AU435138 - AU5137X8****879(T)/2010 AUSTRALIA - SOUTH AUSTRALIA - Port Stanvac - Scientific instrument***Former Notice* - 335(T)/2009 is cancelled*Date* - Until 31 October 2010

South Australian Research and Development Institute (AA485627)

A subsurface scientific instrument exists in position 35° 05'.75 S 138° 28'.19 E (WGS84 datum).

**Chart temporarily affected - Aus 125 - Aus 780 - Aus 781****880(T)/2010 AUSTRALIA - SOUTH AUSTRALIA - Kangaroo Island - Penneshaw - Light destroyed; lights established***Former Notice* - 775(T)/2010 is cancelled

Department for Transport, Energy and Infrastructure SA Notice 36/2010 (AA485143)

The light (35° 43'.00 S 137° 56'.65 E (WGS84 datum)) has been destroyed. Temporary lights exist as follows:

<i>Position</i>	<i>Remarks</i>
35° 43'.02 S 137° 56'.60 E	<i>Fl. G.2s 4M</i>
35° 42'.98 S 137° 56'.62 E	<i>Fl. 3s 2M</i>

**Chart temporarily affected - Aus 125 - Aus 126 - Aus 345 - Aus 346 - Aus 444 - Aus 780 - AU436137**

**881(T)/2010 AUSTRALIA - SOUTH AUSTRALIA - Murray River - Dredging operations completed; exclusion zone removed***Former Notice* - 520(T)/2009 is cancelled

Department for Transport, Energy and Infrastructure SA Notice 20/2009 (AA399745)

Cancel this notice on receipt.

**Chart formerly affected - Aus 347****882(T)/2010 AUSTRALIA - TASMANIA - Huon River - Butts Reef - Light beacon re-established***Former Notice* - 528(T)/2010 is cancelled

Marine and Safety Tasmania Notice M81/2010 (AA483572)

Cancel this notice on receipt.

**Chart formerly affected - Aus 173 - Aus 795 - AU444147****883(T)/2010 AUSTRALIA - TASMANIA - River Tamar - Long Reach - Light beacon destroyed***Former Notice* - 727(T)/2010 is cancelled*Date* - Until 10 December 2010

Marine and Safety Tasmania Notice M82/2010 (AA485819, AA485820)

No3 light beacon (41° 10'.26 S 146° 55'.80 E) has been destroyed; a starboard lateral light buoy, *Fl.G.3s*, exists in situ.**Chart temporarily affected - Aus 167 - Aus 168 - AU5167X8****884(T)/2010 AUSTRALIA - VICTORIA - Port Phillip - Williamstown - Harbour works completed***Former Notice* - 1089(T)/2009 is cancelled

Victorian Notice 121(T)/2009 (AA427815)

Cancel this notice on receipt.

**Chart formerly affected - Aus 154 - Aus 155 - AU438144 - AU5XX154****885(T)/2010 AUSTRALIA - VICTORIA - Port Phillip - Port Melbourne - Maribyrnong River - Harbour works completed***Former Notice* - 729(T)/2010 is cancelled

Victorian Notice 69(T)/2010 (AA478133)

Cancel this notice on receipt.

**Chart formerly affected - Aus 154 - AU5XX154****886(T)/2010 AUSTRALIA - VICTORIA - Port Phillip - Brighton - Dredging operations***Former Notice* - 730(T)/2010 is cancelled*Date* - Until 1 December 2010

Victorian Notice 77(T)/2010 (AA484800)

The dredge *Eva K* is conducting dredging operations in the vicinity of 37° 54'.31 S 144° 58'.90 E.The dredge material will be deposited in position 37° 54'.50 S 144° 58'.21 E via a pipeline, marked by special light buoys, *Fl.Y.3s*, and white buoys.

All hazards to navigation will display appropriate lights and symbols.

Mariners are advised to navigate with caution in the area.

**Chart temporarily affected - Aus 143 - Aus 155 - AU438144**

**887(T)/2010 AUSTRALIA - VICTORIA - Port Phillip - Patterson River - Shoaling**

Victorian Notice 78(T)/2010 (AA485715)

Shoaling, with a least depth of *1 metre*, exists within the entrance to Patterson River (38° 04'.43 S 145° 07'.12 E)

Mariners are advised to navigate with caution in the area.

**Chart temporarily affected - Aus 143 - AU439145 - AU5143P1**

## HYDROGRAPHIC REPORTS

<i>Locality</i>	<i>Report</i>	<i>Ship/Authority</i>	<i>Observer</i>
WA- Timor Sea	Obstruction	HMAS <i>Tarakan</i>	
NT- Apsley Strait	Buoys	ACV <i>Corio Bay</i>	A Paulsen
QLD- Ribbon Reefs	Rock		T Jackson

**NAVIGATION WARNINGS**

The following radio messages have been received during the period to 13 August 2010. Signal copies of these messages may be destroyed. It is recommended that the reprint of Navigational Warnings should be kept in a file or a book divided into areas. Cancellation should be made on receipt of signals and reprints.

Rigs on location other than those listed in the latest Section III summary are the subject of Radio Navigational Warnings. Rigs in transit will not be the subject of Warnings.

**AUSCOAST WARNING**

- 183 Drill rig *Ocean Shield* in position 20° 17'.05 S 116° 15'.40 E. 2.5M clearance requested.  
 184 4 lit anchor buoys marking well within 1M radius of position 21° 24'.3 S 113° 56'.0 E.  
 185 Special purpose vessel *OHM Leader* conducting seismic survey in area bounded by 10° 30'.0 S to 10° 36'.0 S and 125° 51'.0 E to 126° 12'.0 E. 1M clearance requested.  
 186 Cancelled.  
 187 Cancelled.  
 188 Drill rig *Ocean Epoch* in position 21° 34'.02 S 114° 10'.08 E. 2.5M clearance requested.  
 189 Cancelled.  
 190 Cancelled.

**NAVAREA X WARNINGS**

Nil.

**Navigational warnings in force as at 130001UTC AUG 10.****Auscoast**

111 159 165 169 175 177 180 181 183 184 185 188

**Navarea X**

Nil.

**Summary of mobile drilling rigs as at 130001UTC AUG 10.**

<i>Name</i>	<i>Position</i>
Songa Venus	13° 40'.53 S 123° 21'.31 E
Ocean Shield	20° 17'.05 S 116° 15'.40 E
Stena Clyde	20° 03'.70 S 115° 11'.00 E
Ensco 7500	20° 18'.29 S 114° 41'.15 E
Ocean America	19° 24'.13 S 114° 14'.59 E
Ocean Epoch	21° 34'.02 S 114° 10'.08 E
Jack Bates	20° 28'.60 S 113° 55'.60 E
Atwood Eagle	21° 28'.11 S 113° 50'.47 E
Maersk Discoverer	19° 56'.32 S 111° 38'.57 E
Ocean Patriot	38° 10'.86 S 148° 35'.58 E

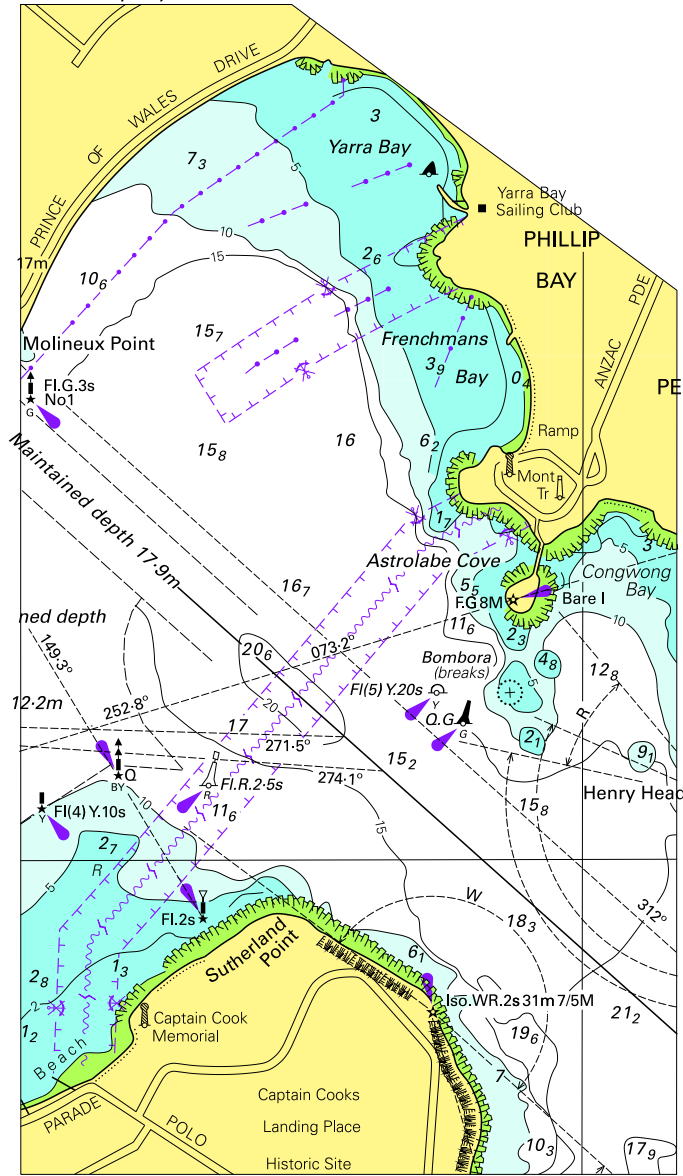
**NAVAREA XIV WARNINGS**

- 021 Cancelled.  
 022 South Pacific Ocean, Fiji, Northeastwards. Underwater operations by vessel R/V L'Atalante 03 Aug to 23 Sep 2010, in area bounded by:  
 12°00'.0 S 176°00'.0 W  
 12°00'.0 S 179°30'.0 W  
 16°00'.0 S 179°30'.0 W  
 16°00'.0 S 176°00'.0 W  
 Wide berth requested.  
 023 South Pacific Ocean, Fiji, Viti Levu. The following light is unlit: Navula Point K4706 17° 53'.2 S 177° 14'.9 E. The following light is unreliable: Naikorokoro K4710 17° 39'.2 S 177° 22'.6 E.  
 024 Cancelled.  
 025 Cancelled.

**Navarea XIV warnings in force as at 130001UTC AUG 10.**

019 022 023

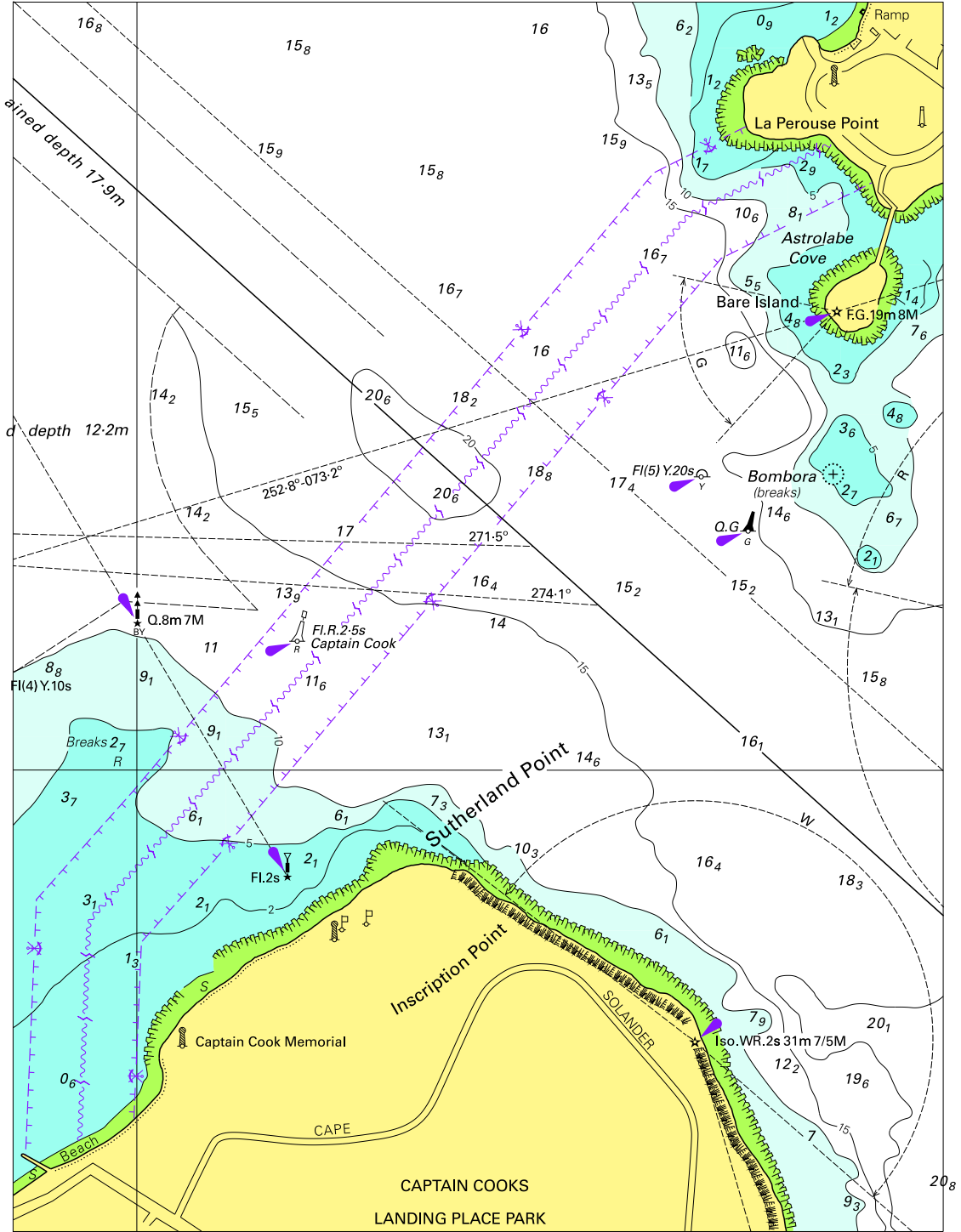
To accompany Australian Notice to Mariners 823/2010



© Commonwealth of Australia 2010 (86.7 x 154.7mm)

Block for chart Aus 198

To accompany Australian Notice to Mariners 823/2010



Block for chart Aus 199

© Commonwealth of Australia 2010

(144.7 x 191.2mm)

