



30 July 2010

Edition 15

Australian Notices to Mariners are the authority for correcting Australian Charts and Publications

AUSTRALIAN NOTICES TO MARINERS

Notices 778 – 821 

Published fortnightly by the Australian Hydrographic Service

Commodore R. NAIRN RAN
Hydrographer of Australia

SECTIONS.

- I. **Australian Notices to Mariners, including blocks and notes.**
- II. **Hydrographic Reports.**
- III. **Navigational Warnings.**

SUPPLEMENTS.

- I. **Tracings**
- II. **Cumulative List of Australian Notices to Mariners.**
- III. **Temporary and Preliminary Notices in force.**
- IV. **Amendments to Admiralty List of Lights and Fog Signals (Vol K),
Radio Signals (NP 281(2), 282, 283(2), 285, 286(4)) and Sailing
Directions (NP 9, 13, 14, 15, 33, 34, 35, 36, 39, 44, 51, 60, 61, 62, 100, 136).**

© Commonwealth of Australia 2010

This work is copyright. Apart from any use permitted under the Copyright Act 1968, no part may be reproduced by any process, adapted, communicated or commercially exploited without prior written permission from The Commonwealth represented by the Australian Hydrographic Service.

IMPORTANT NOTICE

This edition of Notices to Mariners includes all significant information affecting AHS products which the AHS has become aware of since the last edition. All reasonable efforts have been made to ensure the accuracy and completeness of the information, including third party information, on which these updates are based. The AHS regards third parties from which it receives information as reliable, however the AHS cannot verify all such information and errors may therefore exist. The AHS does not accept liability for errors in third party information.

GENERAL INSTRUCTIONS

The substance of these notices should be inserted on the charts affected.

Bearings are referred to the true compass and are reckoned clockwise from North; those relating to lights are given as seen by an observer from seaward. Positions quoted in permanent notices relate to the horizontal datum for the chart(s). When preliminary or temporary notices affect multiple charts, positions will be provided in relation to only one horizontal datum and that datum will be specified. When the multiple charts do not have a common horizontal datum, mariners will be required to adjust the position(s) for those charts not on the specified datum. The range quoted for a light is its nominal range. Depths are with reference to the chart datum of each chart. Heights are above mean high water springs or mean higher high water, as appropriate.

The capital letter (P) or (T) after the number of any notice denotes a preliminary or temporary notice respectively, which are contained separately at the end of the permanent notices. A star (*) adjacent to the number of a notice indicates that the notice is based on original information.

REPORTING OF DANGERS

Mariners are particularly requested to notify the AUSTRALIAN HYDROGRAPHIC SERVICE, Locked Bag 8801 Wollongong, NSW 2500 (Fax 02-4223 6599, e-mail Hydro.NTM@defence.gov.au or, alternatively by filling in and submitting the [Hydrographic Notes](#) forms located on the web site – www.hydro.gov.au), immediately on the discovery of new dangers or suspected dangers to navigation. For changes or defects in aids to navigation notify AusSAR (Fax 02-6230 6868 or email rccaus@amsa.gov.au).

AUTHORISED USE

Copies of Australian notices are available free of charge from the Australian Hydrographic Service (AHS) website (www.hydro.gov.au) and through the eNotices (email) service (www.hydro.gov.au/enotices/enotices.htm).

Individual Notices may be copied for the purpose of inserting Notice substance on official charts and publications. Paper copies may be printed by chart agents and distributed to customers on a cost recovery basis. Participating chart agents are listed on the AHS website as providing a 'Paper Notices to Mariners' service (www.hydro.gov.au/prodserv/distributors/distributors.htm). Copies of the notices may not be sold for profit without prior written agreement.

NUMERICAL INDEX OF NOTICES TO MARINERS

Edition No 15

Notices	Aus Chart, INT Chart, ENC Cell
778.....	Aus 52, 118, 329, 349, 5000, 5001, AU421118, 431114, 431115
779.....	Aus 198
780.....	Aus 247
781.....	Aus 426, 611
782.....	Aus 253
783.....	Aus 617, 4620, 4621, INT 620, 621, AX 4620F, 4621F
784.....	Aus 386, 387
785.....	Aus 289
786.....	Aus 6
787.....	Aus 306, 715, AX 0306F
788.....	Aus 22, 309, 722, 4721, INT 721, AX 0309F, 4721F, 72309, 72722
789.....	Aus 607
790.....	Aus 739, 740
791.....	Aus 332
792.....	Aus 105, AX 60105
793.....	Aus 116
794.....	Aus 115
795.....	Aus 118, AX 0118E
796.....	Aus 343, 345, 776, 780, AX 0343E, 0776E
797.....	Aus 139
798.....	Aus 345, 347, 444, 780
799.....	Aus 422, 487, 787, 788
800.....	Aus 144, 158
801.....	Aus 150
802(T).....	Aus 236, AU428153
803(T).....	Aus 236, AU428153
804(T).....	Aus 246, 819, AU424151
805(T).....	Aus 249, 250, AX 0249E, AU422149, 5250P2
806(T).....	Aus 258, AU5258P1
807(T).....	Aus 258, AU5258P1
808(T).....	Aus 4604, INT 604, AX 4604F, AU130150
809(T).....	Aus 4, 701, AU413141
810(T).....	Aus 4, AU5XX4P1
811(T).....	Aus 6
812(T).....	Aus 414, 415, 4603, 4721, 4722, INT 603, 721, 722, AX 0415F, 4603F, 4721F, 4722F, AU130090, 130120, 220120
813(T).....	Aus 52, 53, 54, 739, 740, AU5XXX52
814(T).....	Aus 328, 742, AU421115
815(T).....	Aus 117, AX 70117, AU433115
816(T).....	Aus 169, 766, AU443148, 5169P3
817(T).....	Aus 167, 799, AU442146, 5167X8
818(T).....	Aus 167, AU5167X8
819(T).....	Aus 154, 155, AU5XX154
820(T).....	Aus 154
821(T).....	Aus 150, 151, AU439145

ENC Cell	Notices
AU130090.....	812(T)
AU130120.....	812(T)
AU130150.....	808(T)
AU220120.....	812(T)
AU413141.....	809(T)
AU421115.....	814(T)
AU421118.....	778
AU422149.....	805(T)
AU424151.....	804(T)
AU428153.....	802(T), 803(T)
AU431114.....	778
AU431115.....	778
AU433115.....	815(T)
AU439145.....	821(T)
AU442146.....	817(T)
AU443148.....	816(T)
AU5XX4P1.....	810(T)
AU5XXX52.....	813(T)
AU5XX154.....	819(T)
AU5167X8.....	817(T), 818(T)
AU5169P3.....	816(T)
AU5250P2.....	805(T)
AU5258P1.....	806(T), 807(T)

778 AUSTRALIA - Product

Australian Hydrographic Service (AA474045, AA482276, AA483169, AA483404)

New Edition

<i>Chart</i>	<i>Published</i>	<i>Title and description of amendments</i>	<i>Scale</i>	<i>Index Chart</i>	<i>Price</i>
Aus 52	18/6/2010	Australia - North West Coast - Western Australia - Entrance Channel to Port Hedland 20° 05'.90 S - 20° 19'.90 S 118° 29'.07 E - 118° 38'.45 E <i>New edition referred to WGS84 datum and updated for new anchorages.</i>	1:25 000	Aus 5000	\$35.00
Aus 118	18/6/2010	Australia - South Coast - Western Australia - Approaches to King George Sound 34° 52'.23 S - 35° 18'.70 S 117° 36'.27 E - 118° 27'.21 E <i>New edition referred to WGS84 datum and general updating throughout.</i>	1:75 000	Aus 5001	\$35.00

New Electronic Navigation Chart (Seafarer ENC)

<i>Cell Name</i>	<i>Released</i>	<i>Title</i>
AU421118	July 2010	Western Australia - Approaches to Port Hedland
AU431114	July 2010	Western Australia - Point Louise to Escape Island
AU431115	July 2010	Western Australia - Jurien Bay to Wedge Island

New Chart to be published shortly

<i>Chart</i>	<i>Title</i>	<i>Scale</i>	<i>Expected Publication Date</i>	<i>Expected Stock Availability</i>
Aus 329	Australia - North West Coast - Western Australia - North West Cape to Point Cloates	1:300 000	30 July 2010	6 September 2010
Aus 349	Australia - South Coast - Victoria - Cape Nelson to Port Phillip	1:300 000	30 July 2010	6 September 2010

Chart permanently withdrawn

<i>Chart</i>	<i>On publication of new edition</i>
Aus 52	Aus 52
Aus 118	Aus 118

Miscellaneous Correction

Aus 5000			
<i>Amend</i>	Aus 700 details to read:		
Aus 700	Western Approaches to Torres Strait	1:150 000	Jul 1994
Aus 5001			
<i>Amend</i>	Aus 357A details to read:		
Aus 357A	Bass Strait Oil Fields	1:300 000	Sep 1983

For further details refer to the AHS website at www.hydro.gov.au for new edition and new chart stock arrival information.

When placing orders with a chart agent, mariners should advise whether their order pertains to the current edition or the new edition.

779* AUSTRALIA - NEW SOUTH WALES - Georges River - Oatley Bay to Moon Point - Buoys removed; light beacon established

Australian Hydrographic Service (AA482266), NSW Maritime (AA481630)

Aus 198 [644/2010]

Insert	port lateral light beacon, <i>Fl.R.</i> 3s, without topmark	33° 59'.357 S	151° 02'.035 E
Delete	buoy	33° 59'.28 S	151° 05'.14 E
	buoy	33° 59'.11 S	151° 05'.38 E
	buoy	33° 59'.07 S	151° 05'.37 E
	depth, 0 ₆ m	33° 59'.38 S	151° 02'.03 E

780* AUSTRALIA - QUEENSLAND - Keppel Bay - Keppel Rocks - Depth northwestwards

Maritime Safety Queensland (DHDB 1559262)

Aus 247 [355/2010]

Insert	depth, 13 ₇ m, enclosed by contour	23° 24'.51 S	151° 01'.69 E
--------	---	--------------	---------------

781* AUSTRALIA - CORAL SEA - Wreck Reefs - Porpoise Cay - Historic wrecks

Australian Hydrographic Service (AA472586)

Aus 426 [411/2010]

Amend	legend to <i>Historic Wks with Protected Zones</i> (see Note)	22° 09'.0 S	155° 19'.0 E
-------	---	-------------	--------------

Aus 611 (plan, Wreck Reefs) [180/2007]

Insert	historic wreck, with 0.43M radius restricted area and legend <i>Historic Wks with Protected Zones</i> (see Note), centred on	22° 11'.633 S	155° 21'.348 E
Delete	historic wrecks, with legend <i>Historic Wks</i> (see Note)	22° 11'.7 S	155° 21'.4 E

782* AUSTRALIA - QUEENSLAND - Perseverance Island - Depth

Australian Hydrographic Service (AA479934)

Aus 253 [153/2010]

Insert	depth, 11 ₆	20° 20'.508 S	149° 00'.229 E
--------	------------------------	---------------	----------------

783* AUSTRALIA - CORAL SEA - Eliza Mary Shoal - Depths

Australian Hydrographic Service (AA482020)

Aus 617 (plan, Willis Islets) [407/2009]

Delete	depth, 16m, and enclosing contour with legend, Eliza Mary Shoal Rep (1887)	16° 29'.6 S	149° 45'.3 E
--------	--	-------------	--------------

Aus 617 (plan, South West Islet to Magdelaine Cays)

Delete	depth, 16m, and enclosing contour with legend, Eliza Mary Shoal Rep (1887)	16° 29'.6 S	149° 45'.3 E
--------	--	-------------	--------------

Aus 4620 (INT 620) [411/2010]

Insert	depth, 22 ₉ m, and extend contour E to enclose	16° 29'.8 S	149° 47'.8 E
--------	---	-------------	--------------

Delete	depth, 16m	16° 30'.0 S	149° 45'.0 E
--------	------------	-------------	--------------

Aus 4621 (INT 621) [754/2010]

Insert	depth, 22 ₉ m, and extend contour E to enclose	16° 29'.8 S	149° 47'.8 E
--------	---	-------------	--------------

Delete	depth, 16m	16° 30'.0 S	149° 45'.0 E
--------	------------	-------------	--------------

AX 4620F [411/2010]

Insert	depth, 22 ₉ m, and extend contour E to enclose	16° 29'.8 S	149° 47'.8 E
--------	---	-------------	--------------

Delete	depth, 16m	16° 30'.0 S	149° 45'.0 E
--------	------------	-------------	--------------

AX 4621F [754/2010]

Insert	depth, 22 ₉ m, and extend contour E to enclose	16° 29'.8 S	149° 47'.8 E
--------	---	-------------	--------------

Delete	depth, 16m	16° 30'.0 S	149° 45'.0 E
--------	------------	-------------	--------------

784* PAPUA NEW GUINEA - Dampier Strait - Anchorage

Australian Hydrographic Service (AA480082)

Aus 386 [1359/2009]

Delete	anchorage	5° 36'.0 S	148° 19'.0 E
--------	-----------	------------	--------------

Aus 387 [589/2010]

Delete	anchorage	5° 36'.0 S	148° 19'.0 E
--------	-----------	------------	--------------

785* AUSTRALIA - TORRES STRAIT - Varzin Passage - Light buoy established*Former Notice - 516(P)/2010 is cancelled*

Auscoast Warning 169/2010 (AA480548), Australian Maritime Safety Authority (AA480567)

Aus 289 [1360/2009]

Insert	special spherical light buoy, <i>Fl(5)Y.20s</i> , without topmark	10° 31'.2 S	141° 56'.8 E
--------	---	-------------	--------------

Delete	depth, 10 ₈ m	10° 31'.23 S	141° 56'.85 E
--------	--------------------------	--------------	---------------

786* AUSTRALIA - QUEENSLAND - Karumba - Light beacons established

Former Notice - 67(T)/2010 is cancelled

Maritime Safety Queensland Notice 603/2010 (AA481747, AA482129)

Aus 6 [204/2010]

Insert	light beacon, <i>Fl. Y.2-5s</i> , with special topmark	17° 26'.739 S	140° 45'.229 E
	light beacon, <i>Fl. Y.2-5s</i> , with special topmark	17° 26'.624 S	140° 45'.020 E
	light beacon, <i>Fl. Y.2-5s</i> , with special topmark	17° 26'.435 S	140° 44'.909 E
Delete	depth, 17m	17° 26'.76 S	140° 45'.26 E

787* AUSTRALIA - NORTHERN TERRITORY - Cape Arnhem to Cape Wessel - ZOC diagram; chart notes; legends

Australian Hydrographic Service (AA482016)

Aus 306 [1157/2009]

Delete	legend, Rep (2006)	12° 14'.2 S	136° 55'.5 E
--------	--------------------	-------------	--------------

Aus 715 [108/2010]

Substitute	accompanying ZOC diagram	12° 13'.0 S	136° 21'.0 E
Amend	legend to <i>Unsurveyed</i>	12° 06'.0 S	137° 13'.5 E
	legend to <i>Unsurveyed</i>	12° 03'.1 S	136° 16'.0 E
	legend to <i>Inadequately Surveyed (see ZOC Diagram)</i>	12° 03'.2 S	136° 34'.0 E
	legend to <i>Unsurveyed</i>	11° 57'.5 S	136° 32'.5 E
	legend to <i>Unsurveyed</i>	11° 21'.0 S	136° 36'.8 E
Delete	legend to <i>Unsurveyed</i>	11° 09'.3 S	137° 09'.0 E
	legend, Rep (2006)	12° 14'.2 S	136° 55'.0 E
	note, INADEQUATELY SURVEYED	12° 21'.0 S	136° 33'.0 E
	note, UNSURVEYED	12° 22'.5 S	136° 33'.0 E

AX 0306F [NC 26/9/2008]

Delete	legend, Rep (2006)	12° 14'.2 S	136° 55'.5 E
--------	--------------------	-------------	--------------

788* AUSTRALIA - NORTHERN TERRITORY - Cape Van Diemen to Beagle Gulf - Historic wrecks

Australian Hydrographic Service (AA472586)

Aus 22 [253/2010]Amend legend to *Historic Wk with Protected Zone (see Note)* 11° 13'.1 S 130° 05'.7 E**Aus 309 [253/2010]**Amend legend to *Historic Wk with Protected Zone (see Note)* 12° 07'.5 S 130° 08'.0 E
legend to *Historic Wk with Protected Zone (see Note)* 11° 13'.5 S 130° 03'.6 E**Aus 722 [745/2010]**Insert historic wreck, with 0.43M radius restricted area and
legend *Historic Wk with Protected Zone (see Note)*,
centred on 12° 07'.04 S 130° 06'.51 E

Delete legend, Historic Wreck (see Note) 12° 07'.0 S 130° 05'.5 E

Aus 4721 (INT 721) [480/2010]Substitute depth, 41m, enclosed by danger circle with legend
Historic Wk with Protected Zone, for historic wreck 12° 08'.0 S 130° 14'.0 E

Delete note, HISTORIC WRECK 15° 32'.0 S 134° 03'.0 E

AX 0309F [253/2010]Amend legend to *Historic Wk with Protected Zone (see Note)* 12° 07'.5 S 130° 08'.0 E
legend to *Historic Wk with Protected Zone (see Note)* 11° 13'.5 S 130° 03'.6 E**AX 4721F [480/2010]**Substitute depth, 41m, enclosed by danger circle with legend
Historic Wk with Protected Zone, for historic wreck 12° 08'.0 S 130° 14'.0 E

Delete note, HISTORIC WRECK 15° 32'.0 S 134° 03'.0 E

AX 72309 [253/2010]Amend legend to *Historic Wk with Protected Zone (see Note)* 12° 07'.5 S 130° 08'.0 E
legend to *Historic Wk with Protected Zone (see Note)* 11° 13'.5 S 130° 03'.6 E**AX 72722 [745/2010]**Insert historic wreck, with 0.43M radius restricted area and
legend *Historic Wk with Protected Zone (see Note)*,
centred on 12° 07'.04 S 130° 06'.51 E

Delete legend, Historic Wreck (see Note) 12° 07'.0 S 130° 05'.5 E

789* INDIAN OCEAN - North Keeling Island - Historic wreck

Australian Hydrographic Service (AA472586)

Aus 607 (plan, North Keeling Island) [305/2009]Substitute historic wreck, with 0.27M radius restricted area and
legend *Historic Wk with Protected Zone (see Note)*,
for historic wreck 11° 50'.55 S 96° 49'.49 E**790* AUSTRALIA - WESTERN AUSTRALIA - Port Hedland - Anchorages**

Port Hedland Port Authority Notice 10/2010 (AA477587)

Aus 739 [NC 15/1/2010]

Insert accompanying block 20° 08'.0 S 118° 30'.0 E

Aus 740 [NC 15/1/2010]

Insert accompanying block 20° 08'.0 S 118° 30'.0 E

791* AUSTRALIA - WESTERN AUSTRALIA - Zuytdorp Cliffs - Historic wreck

Australian Hydrographic Service (AA472586)

Aus 332 [209/2010]Amend legend to *Historic Wk with Protected Zone (see Note)* 27° 11'.2 S 113° 54'.0 E**792* AUSTRALIA - WESTERN AUSTRALIA - Wedge Island - Anchorage**

Department of Transport WA (AA482167)

Aus 105 [38/2010]

Delete small craft anchorage area with legend, centred on 30° 50'.0 S 115° 11'.5 E

AX 60105 [1022/2008]

Delete small craft anchorage area with legend, centred on 30° 50'.0 S 115° 11'.5 E

793* AUSTRALIA - WESTERN AUSTRALIA - Mandurah to Flinders Bay - Nav aids

Department of Transport (AA479586, AA479621)

Aus 116 (plan, Entrance to Mandurah Estuary) [366/2010]

Insert	special spar buoy, without topmark	32° 31'.157 S	115° 43'.373 E
	special spar buoy, without topmark	32° 31'.203 S	115° 43'.295 E
	special spar buoy, without topmark	32° 31'.225 S	115° 43'.202 E
	special spar buoy, without topmark	32° 31'.185 S	115° 42'.520 E
	special spar buoy, without topmark	32° 31'.163 S	115° 42'.381 E
	special spar buoy, without topmark	32° 31'.111 S	115° 42'.259 E

Move	buoy	32° 30'.80 S	115° 43'.67 E
	to	32° 30'.799 S	115° 43'.646 E
	buoy	32° 30'.88 S	115° 43'.62 E
	to	32° 30'.877 S	115° 43'.585 E

Delete depth, 1₉m 32° 31'.13 S 115° 43'.38 E**Aus 116 (plan, Flinders Bay)**

Insert	a dashed line in a direction 093.9° for a distance of 400m, thence a continuous line for 2100m, with legend 273.9°, emanating from light	34° 20'.62 S	115° 10'.11 E
--------	--	--------------	---------------

Delete	dashed and continuous line with legend, emanating from light	34° 20'.6 S	115° 10'.1 E
--------	--	-------------	--------------

794* AUSTRALIA - WESTERN AUSTRALIA - Bunbury - ZOC diagram

Australian Hydrographic Service (AA318722)

Aus 115 [365/2010]

Substitute accompanying ZOC diagram for reliability diagram 33° 09'.5 S 115° 32'.5 E

795* AUSTRALIA - WESTERN AUSTRALIA - Princess Royal Harbour - Wreck

Australian Hydrographic Service (AA481936)

Aus 118 [NE 18/6/2010]

Move	wreck	35° 03'.3 S	117° 54'.7 E
	to	35° 03'.38 S	117° 54'.59 E

AX 0118E [549/2010]

Move	wreck	35° 03'.3 S	117° 54'.7 E
	to	35° 03'.38 S	117° 54'.59 E

796* AUSTRALIA - SOUTH AUSTRALIA - Althorpe Islands to Backstairs Passage - Chart limits; plan withdrawn
 Australian Hydrographic Service (AA472602)

Aus 343 [598/2010]

Insert	magenta limits, with legend <i>Aus 126</i> in NW corner, between	35° 05'.07 S	137° 02'.00 E
		35° 05'.07 S	136° 37'.72 E
		35° 30'.57 S	136° 37'.72 E
		35° 30'.57 S	137° 02'.00 E

Delete	magenta limits, with legend See Aus 345, centred on	35° 17'.0 S	136° 52'.0 E
--------	---	-------------	--------------

Aus 345 [490/2010]

Insert	magenta limits, with legend <i>Aus 126</i> in SW corner, between	35° 30'.5 S	136° 37'.8 E
		35° 30'.5 S	137° 03'.0 E
		35° 05'.0 S	137° 03'.0 E
		35° 05'.0 S	136° 37'.8 E
		35° 30'.5 S	136° 37'.8 E

Delete	plan, ALTHORPE ISLANDS, centred on magenta limits, with legend See Plan, centred on	34° 35'.0 S	137° 30'.0 E
		35° 17'.0 S	136° 52'.0 E

Aus 776 [489/2010]

Insert	magenta limits, with legend <i>Aus 126</i> in NW corner, between	35° 11'.92 S	136° 37'.80 E
		35° 05'.00 S	136° 37'.80 E
		35° 05'.00 S	137° 03'.00 E
		35° 11'.92 S	137° 03'.00 E

Aus 780 [490/2010]

Insert	magenta limits, with legend <i>Aus 126</i> in SE corner, between	36° 01'.10 S	137° 56'.06 E
		36° 01'.10 S	138° 21'.26 E
		35° 35'.60 S	138° 21'.26 E
		35° 35'.60 S	137° 56'.06 E
		36° 01'.10 S	137° 56'.06 E

AX 0343E [598/2010]

Insert	magenta limits, with legend <i>Aus 126</i> in NW corner, between	35° 05'.07 S	137° 02'.00 E
		35° 05'.07 S	136° 37'.72 E
		35° 30'.57 S	136° 37'.72 E
		35° 30'.57 S	137° 02'.00 E

Delete	magenta limits, with legend See Aus 345, centred on	35° 17'.0 S	136° 52'.0 E
--------	---	-------------	--------------

AX 0776E [489/2010]

Insert	magenta limits, with legend <i>Aus 126</i> in NW corner, between	35° 11'.92 S	136° 37'.80 E
		35° 05'.00 S	136° 37'.80 E
		35° 05'.00 S	137° 03'.00 E
		35° 11'.92 S	137° 03'.00 E

797* AUSTRALIA - SOUTH AUSTRALIA - Wattle Point to Marion Reef - Depths

Australian Hydrographic Service (AA482168)

Aus 139 (plan, Macdonnell Sound) [877/2009]

Insert	depth, <i>1_gm</i> , enclosed by contour	35° 08'.03 S	137° 45'.45 E
	depth, <i>2₁m</i>	35° 09'.37 S	137° 48'.58 E

798* AUSTRALIA - SOUTH AUSTRALIA - Backstairs Passage - Depths

Australian Hydrographic Service (AA465696)

Aus 345 [796/2010]Insert depth, 7₅fm, and extend contour S to enclose 35° 39'.60 S 138° 19'.63 EDelete depth, 8₃fm 35° 39'.3 S 138° 20'.3 E**Aus 347 [429/2010]**Insert depth, 14₃m, enclosed by contour 35° 39'.60 S 138° 19'.63 EDelete depth, 20m, and enclosing contour 35° 42'.2 S 138° 12'.7 E
depth, 15₄m 35° 39'.3 S 138° 20'.2 E**Aus 444 [367/2010]**Substitute depth, 7₅fm, for depth, 9fm 35° 39'.5 S 138° 19'.5 E**Aus 780 [796/2010]**Insert depth, 7₅fm, and extend contour S to enclose 35° 39'.70 S 138° 12'.75 EDelete depth, 8₄fm 35° 39'.6 S 138° 19'.1 E**799* AUSTRALIA - VICTORIA - Rotten Point to Ingoldsby Reefs - Historic wrecks**

Australian Hydrographic Service (AA481631 - AA481633), Deakin University (AA442396)

Aus 422 [750/2010]Substitute depth, 35fm, for depth, 40fm 38° 59'.0 S 143° 31'.0 E
magenta legend, *Historic Wk* , for legend Wk 38° 59'.0 S 143° 33'.0 E**Aus 487 [753/2010]**Substitute magenta legend, *Historic Wk* , for legend Wk 38° 58'.7 S 143° 32'.0 E
depth, 65m, for depth, 74m 38° 58'.7 S 143° 30'.4 E*On certain copies only*Amend legend to *Historic Wk with Protected Zone* 38° 29'.0 S 144° 42'.0 E**Aus 787 [307/2010]**Substitute magenta legend, *Historic Wk (see Note)* , for legend Wk 38° 58'.7 S 143° 30'.8 E**Aus 788 [603/2010]**Insert historic wreck, with magenta legend *Historic Wk (see Note)* 38° 46'.64 S 143° 23'.76 E
historic wreck, with magenta legend *Historic Wk (see Note)* 38° 24'.88 S 144° 12'.84 ESubstitute magenta legend, *Historic Wk (see Note)* , for legend Wk 38° 58'.7 S 143° 30'.8 E
depth, 65m, for depth, 74m 38° 58'.7 S 143° 30'.4 E**800* AUSTRALIA - VICTORIA - Port Phillip - Nepean Reef - Beacon**

Australian Hydrographic Service (AA481997), Port of Melbourne Corporation (AA435949)

Aus 144 [601/2010]

Delete beacon 38° 18'.08 S 144° 38'.91 E

Aus 158 [706/2010]

Delete beacon 38° 18'.08 S 144° 38'.91 E

801* AUSTRALIA - VICTORIA - Western Port - Rhyll - Infrastructure

Parks Victoria (AA478946, AA478947)

Aus 150 (plan, Rhyll) [NE 4/6/2010]

Insert accompanying block

38° 28'.0 S

145° 18'.6 E

802(T)/2010 AUSTRALIA - QUEENSLAND - Moreton Bay - Ship to ship transfer

Former Notice - 667(T)/2010 is cancelled

Maritime Safety Queensland Notice 627(T)/2010 (AA483268)

Ship to ship transfer of LPG will be conducted at STS1 anchorage (27° 17'.25 S 153° 16'.56 E). An exclusion zone (1850 metres radius) exists around transfer operations.

Chart temporarily affected - Aus 236 - AU428153

803(T)/2010 AUSTRALIA - QUEENSLAND - Moreton Bay - Cabbage Tree Head - Shoaling

Maritime Safety Queensland Notice 622(T)/2010 (AA482925)

Shoaling exists in the entrance channel to Cabbage Tree Creek (27° 19'.69 S 153° 05'.50 E).

Mariners are advised to navigate with caution in the area.

Chart temporarily affected - Aus 236 - AU428153

804(T)/2010 AUSTRALIA - QUEENSLAND - Colosseum Inlet - Obstruction

Maritime Safety Queensland Notice 610(T)/2010 (AA482348)

An obstruction exists in position 23° 57'.55 S 151° 26'.24 E.

Mariners are advised to navigate with caution in the area.

Chart temporarily affected - Aus 246 - Aus 819 - AU424151

805(T)/2010 AUSTRALIA - QUEENSLAND - Hay Point - Dredging operations

Former Notice - 615(T)/2010 is cancelled

Maritime Safety Queensland Notices 455(T)/2010, 632(T)/2010 (AA472440, AA483487)

Dredge *Hippopotes*, barges *Murray River* and *Yarra River*, MT *Black Panther* and support vessels are conducting dredging operations in the area to the south of DBCT berth No1 (21° 15'.00 S 149° 18'.36 E).

The tug will be towing the barges to the spoil ground (21° 11'.53 S 149° 18'.50 E).

Unlit mooring buoys exist in the following positions:

21° 16'.04 S 149° 18'.76 E

21° 16'.19 S 149° 18'.86 E

21° 16'.13 S 149° 18'.67 E.

All vessels will monitor VHF Ch 14 and 16 and display appropriate lights and signals.

Mariners are advised to navigate with caution in the area.

Chart temporarily affected - Aus 249 - Aus 250 – AX 0249E - AU422149 - AU5250P2

806(T)/2010 AUSTRALIA - QUEENSLAND - Mourilyan - Depth information*Former Notice - 764(T)/2010 is cancelled*

Maritime Safety Queensland Notice 623(T)/2010 (AA482921)

Available depths as at 26 July 2010:

	<i>Metres</i>
Departure Channel	9.6
Inner Channel	9.6
* Swing Basin	6.6
* Sugar Berth	10.1

* Indicates revised entry.

Shoaling for a distance of 200m to seaward of the berth pocket can develop over time.

Chart temporarily affected - Aus 258 - AU5258P1**807(T)/2010 AUSTRALIA - QUEENSLAND - Mourilyan - Light buoys repositioned**

Maritime Safety Queensland Notice 616(T)/2010 (AA482662)

The light buoys have been repositioned as follows:

<i>Charted position</i>	<i>Current position</i>
17° 36'.11 S 146° 07'.30 E	17° 36'.11 S 146° 07'.31 E
17° 36'.16 S 146° 07'.38 E	17° 36'.14 S 146° 07'.41 E
17° 36'.17 S 146° 07'.49 E	17° 36'.13 S 146° 07'.51 E.

Chart temporarily affected - Aus 258 - AU5258P1**808(T)/2010 AUSTRALIA - CORAL SEA - Mellish Reef - Light buoy recovered***Former Notice - 622(T)/2010 is cancelled**Date - Until 30 September 2010*

Australian Bureau of Meteorology (AA483481)

The light buoy, *Fl. Y.3s* (15° 48'.0 S 158° 31'.0 E), has been recovered and will be replaced in position late September 2010.**Chart temporarily affected – Aus 4604 (INT 604) - AX 4604F - AU130150****809(T)/2010 AUSTRALIA - QUEENSLAND - Weipa - Scientific instruments***Former Notice - 765(T)/2010 is cancelled*

Maritime Safety Queensland Notice 619(T)/2010 (AA482663)

Scientific instruments exist as follows:

<i>Position</i>	<i>Remarks</i>
12° 38'.41 S 141° 38'.17 E	lit buoy, <i>Fl. Y.3s</i>
12° 39'.59 S 141° 38'.12 E	lit buoy, <i>Fl. Y.5s</i>
12° 39'.59 S 141° 40'.45 E	lit buoy, <i>Fl. Y.5s</i>
12° 40'.05 S 141° 40'.33 E	lit buoy, <i>Fl. Y.3s</i>

Chart temporarily affected - Aus 4 - Aus 701 - AU413141

810(T)/2010 AUSTRALIA - QUEENSLAND - Weipa - Dredging operations

Date - Until 27 August 2010

Maritime Safety Queensland Notice 601(T)/2010 (AA481748)

The dredge *Brisbane* and support vessel *Pacific Conquest* are conducting dredging operations in the Port of Weipa and South Channel.

Hydrographic surveys will be conducted by survey vessel *Norfolk*.

Weipa harbour can be contacted on VHF Ch 12 and Ch 16 for further information.

Mariners are advised to navigate with caution in the area.

Chart temporarily affected - Aus 4 - AU5XX4P1**811(T)/2010 AUSTRALIA - QUEENSLAND - Karumba - Dredging operations completed**

Former Notice - 567(T)/2010 is cancelled

Maritime Safety Queensland Notice 445(T)/2010 (AA471655)

Cancel this notice on receipt.

Chart formerly affected - Aus 6**812(T)/2010 AUSTRALIA - WESTERN AUSTRALIA - Ashmore Reef to Rowley Shoals - Seismic survey**

Date - Until 3 December 2010

Searcher Seismic Pty Ltd (AA483313)

MV *Aquila Explorer*, with a 8000 metre towed array, will be conducting a survey in the area bounded by 10° 50'.0 S to 16° 30'.0 S and 119° 00'.0 E to 126° 00'.0 E (WGS84 datum).

Chart temporarily affected - Aus 414 - Aus 415 - Aus 4603 (INT 603) - Aus 4721 (INT 721) - Aus 4722 (INT 722) – AX 0415F – AX 4603F – AX 4721F – AX 4722F - AU130090 - AU130120 - AU220120**813(T)/2010 AUSTRALIA - WESTERN AUSTRALIA - Port Hedland - Scientific instruments**

Former Notice - 330(T)/2010 is cancelled

Date - Until 31 March 2011

MetOcean Engineers (AA483280)

Scientific instruments exist as follows:

Position (WGS84 datum)	Remarks
20° 15'.42 S 118° 33'.72 E	5 poly floats
20° 15'.54 S 118° 33'.81 E	Fl(5)Y.20s
20° 13'.60 S 118° 30'.63 E	5 poly floats
20° 10'.62 S 118° 30'.50 E	5 poly floats
20° 08'.07 S 118° 23'.87 E	5 poly floats
20° 08'.05 S 118° 24'.15 E	5 poly floats
20° 08'.02 S 118° 24'.10 E	Fl(5)Y.20s
20° 07'.85 S 118° 24'.18 E	Fl(5)Y.20s
20° 07'.81 S 118° 24'.13 E	Fl(5)Y.20s and 5 poly floats

Chart temporarily affected - Aus 52 - Aus 53 - Aus 54 - Aus 739 - Aus 740 - AU5XXX52

814(T)/2010 AUSTRALIA - WESTERN AUSTRALIA - Montebello Islands - Scientific instruments*Date* - Until 10 September 2010

Fugro (AA482678)

Subsurface scientific instruments (26 metres below the surface) exist in positions 20° 18'.25 S 115° 23'.25 E and 20° 18'.75 S 115° 25'.50 E (WGS84 datum).

Mariners are advised to navigate with caution in the area.

Chart temporarily affected - Aus 328 - Aus 742 - AU421115

815(T)/2010 AUSTRALIA - WESTERN AUSTRALIA - Garden Island - Exclusion zone*Date* - Until 31 January 2011

Department of Transport WA Notice 75/2010 (AA483182, AA483183)

An exclusion zone, marked at each corner by special light buoys, exists within an area bounded by the following positions;

32° 09'.12 S 115° 40'.68 E

32° 09'.12 S 115° 40'.98 E

32° 09'.44 S 115° 41'.30 E

32° 09'.45 S 115° 40'.68 E.

Only authorised vessels are permitted entry.

Chart temporarily affected - Aus 117 – AX 70117 - AU433115

816(T)/2010 AUSTRALIA - TASMANIA - Coles Bay - Light removed

Marine and Safety Tasmania Notice M77/2010 (AA482334)

The light, *F.Bu* (42° 07'.71 S 148° 17'.32 E), has been temporarily removed.

Chart temporarily affected - Aus 169 - Aus 766 - AU443148 - AU5169P3

817(T)/2010 AUSTRALIA - TASMANIA - Port Dalrymple - Scientific instruments*Former Notice* - 1142(T)/2009 is cancelled*Date* - Until 30 September 2010

MetOcean Engineers (AA483485)

Scientific instruments marked by surface floats exist in the following positions:

40° 58'.23 S 146° 50'.25 E

41° 00'.27 S 146° 51'.65 E

41° 03'.70 S 146° 45'.05 E.

Chart temporarily affected - Aus 167 - Aus 799 - AU442146 - AU5167X8

818(T)/2010 AUSTRALIA - TASMANIA - Port Dalrymple - Beauty Point - Harbour works*Date* - Until 31 August 2010

Marine and Safety Tasmania M80/2010 (AA483180)

Piling operations are in progress at the marina (41° 09'.45 S 146° 49'.45 E).

Mariners are advised to navigate with caution in the area.

Chart temporarily affected - Aus 167 - AU5167X8

819(T)/2010 AUSTRALIA - VICTORIA - Port Melbourne - Port Phillip - Dredging operations completed

Former Notice - 1344(T)/2009 is cancelled
Victorian Notice 73(T)/2010 (AA482319)

Cancel this notice on receipt.

Chart formerly affected - Aus 154 - Aus 155 - AU5XX154

820(T)/2010 AUSTRALIA - VICTORIA - Port Melbourne - Webb Dock - Shoaling removed

Former Notice - 897(T)/2007 is cancelled
Victorian Notice 73(T)/2010 (AA482319)

Cancel this notice on receipt.

Chart formerly affected - Aus 154

821(T)/2010 AUSTRALIA - VICTORIA - Western Port - Phillip Island - McHaffies Point - Light restored

Former Notice - 280(T)/2010 is cancelled
Victorian Notice 74/2010 (AA482342)

Cancel this notice on receipt.

Chart formerly affected - Aus 150 - Aus 151 - AU439145

HYDROGRAPHIC REPORTS

<i>Locality</i>	<i>Report</i>	<i>Ship/Authority</i>	<i>Observer</i>
VIC- Port Phillip	Wreck		P Taylor

NAVIGATION WARNINGS

The following radio messages have been received during the period to 30 July 2010. Signal copies of these messages may be destroyed. It is recommended that the reprint of Navigational Warnings should be kept in a file or a book divided into areas. Cancellation should be made on receipt of signals and reprints.

Rigs on location other than those listed in the latest Section III summary are the subject of Radio Navigational Warnings. Rigs in transit will not be the subject of Warnings.

AUSCOAST WARNING

- 175 Caldbeck Reef light K1890 (10° 06'.4 S 143° 09'.9 E) unreliable.
 176 Cancelled.
 177 Drill rig *Maersk Discoverer* in position 19° 56'.32 S 111° 38'.57 E. 2.5M clearance requested.
 178 8 lit anchor buoys marking well within 1M radius of position 21° 24'.3 S 113° 56'.0 E.
 179 Drill rig *Ocean Epoch* in position 21° 34'.07 S 114° 08'.31 E. 2.5M clearance requested.
 180 Drill rig *Ensco 7500* in position 20° 18'.29 S 114° 41'.15 E. 2.5M clearance requested.
 181 Drill rig *Atwood Eagle* in position 21° 28'.11 S 113° 50'.47 E. 2.5M clearance requested.
 182 Cancelled.

NAVAREA X WARNINGS

Nil.

Navigational warnings in force as at 300001UTC JUL 10.**Auscoast**

111 144 159 165 169 174 175 177 178 180 181

Navarea X

Nil.

Summary of mobile drilling rigs as at 300001UTC JUL 10.

<i>Name</i>	<i>Position</i>
Songa Venus	13° 40'.53 S 123° 21'.31 E
Stena Clyde	20° 03'.70 S 115° 11'.00 E
Ensco 7500	20° 18'.29 S 114° 41'.15 E
Ocean America	19° 24'.13 S 114° 14'.59 E
Ocean Epoch	21° 34'.07 S 114° 08'.31 E
Jack Bates	20° 28'.60 S 113° 55'.60 E
Atwood Eagle	21° 28'.11 S 113° 50'.47 E
Maersk Discoverer	19° 56'.32 S 111° 38'.57 E
Ocean Patriot	38° 10'.86 S 148° 35'.58 E

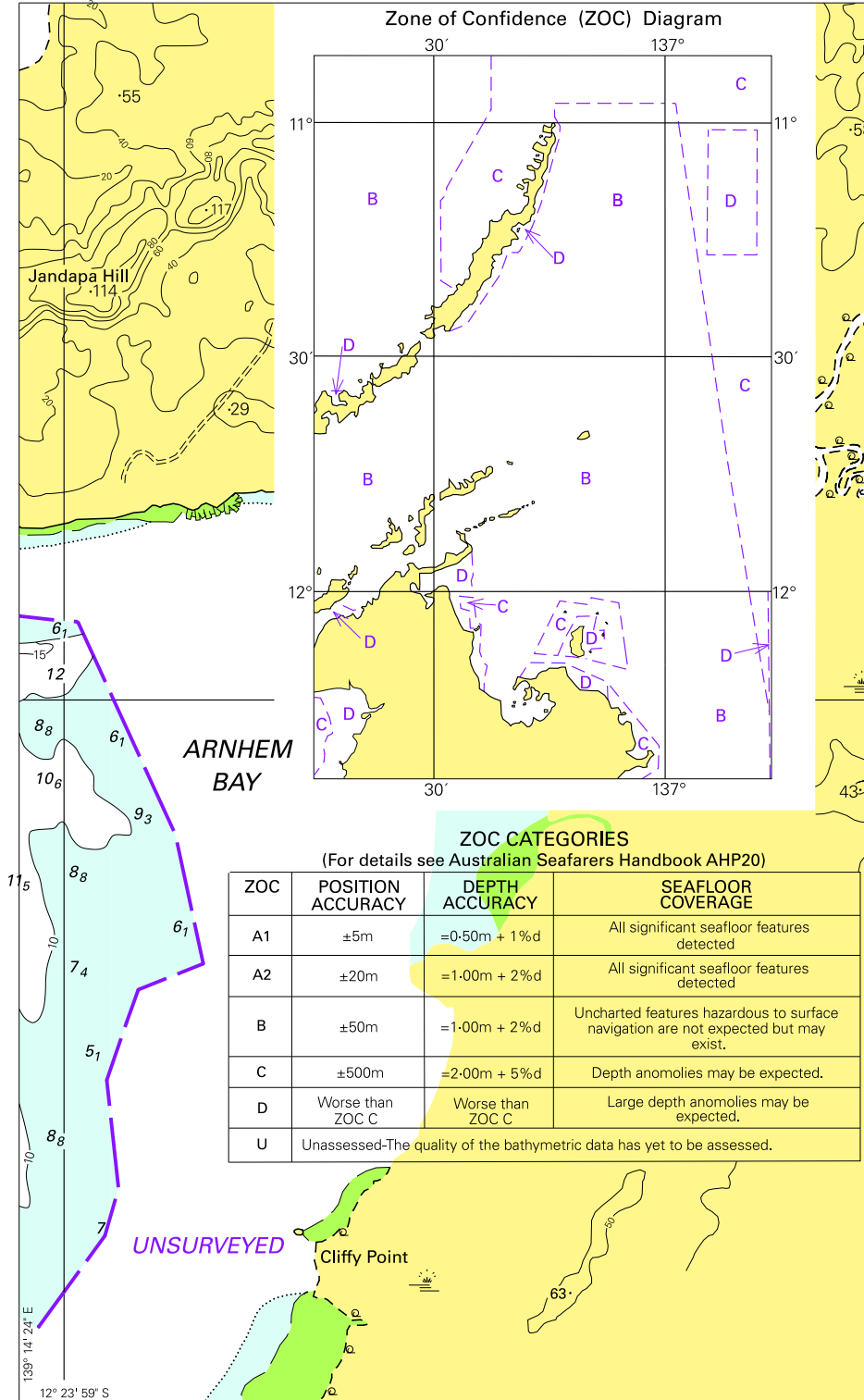
NAVAREA XIV WARNINGS

Nil.

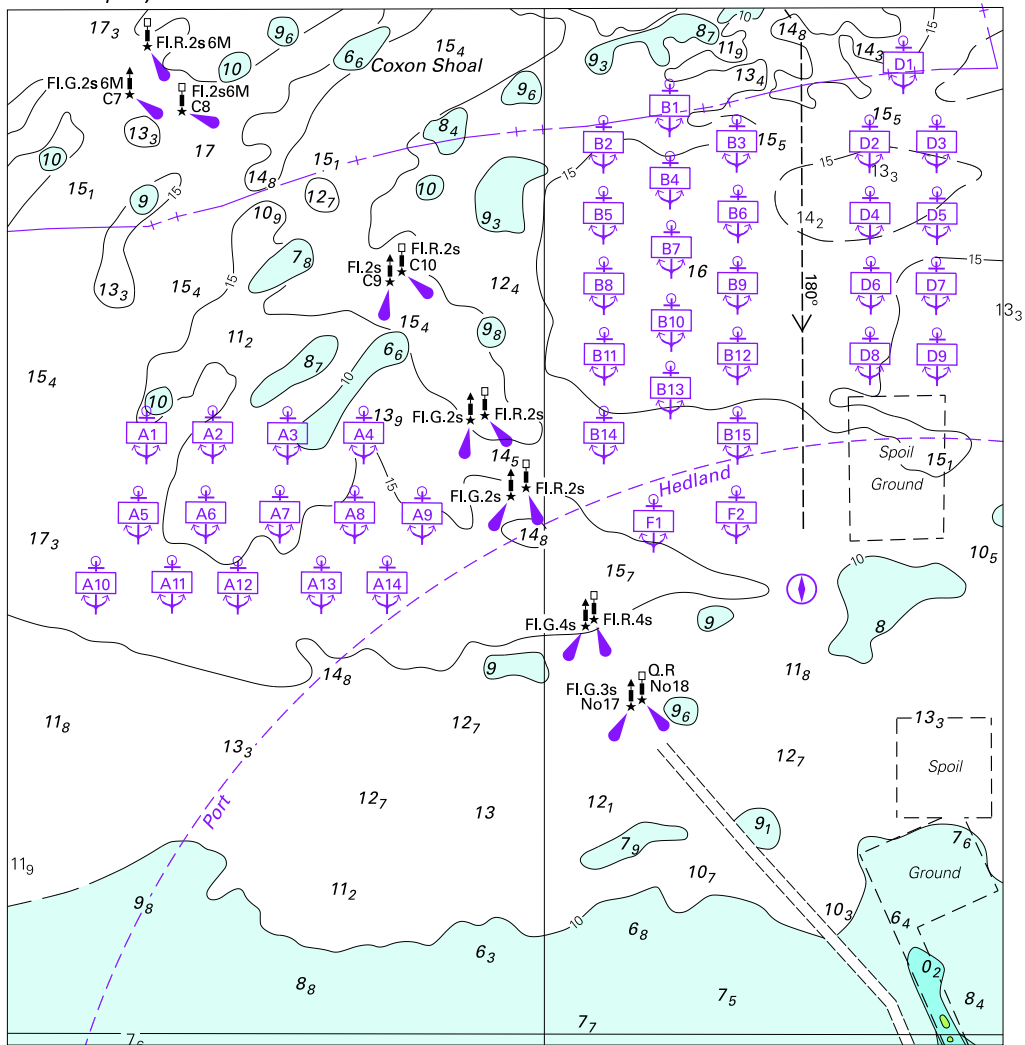
Navarea XIV warnings in force as at 300001UTC JUL 10.

007 018 019

To accompany Australian Notice to Mariners 787/2010



To accompany Australian Notice to Mariners 790/2010

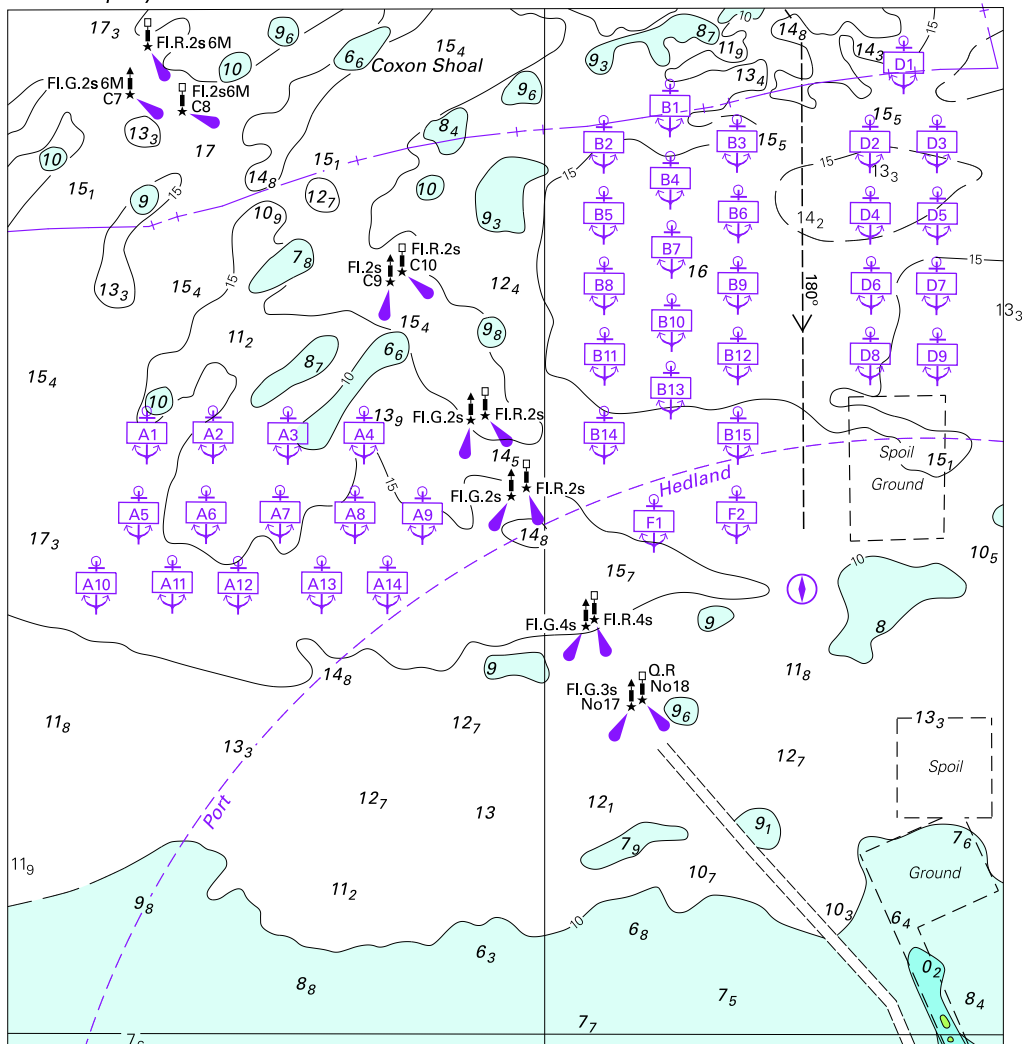


Block for chart Aus 739

© Commonwealth of Australia 2010

(131.7 x 136.9mm)

To accompany Australian Notice to Mariners 790/2010

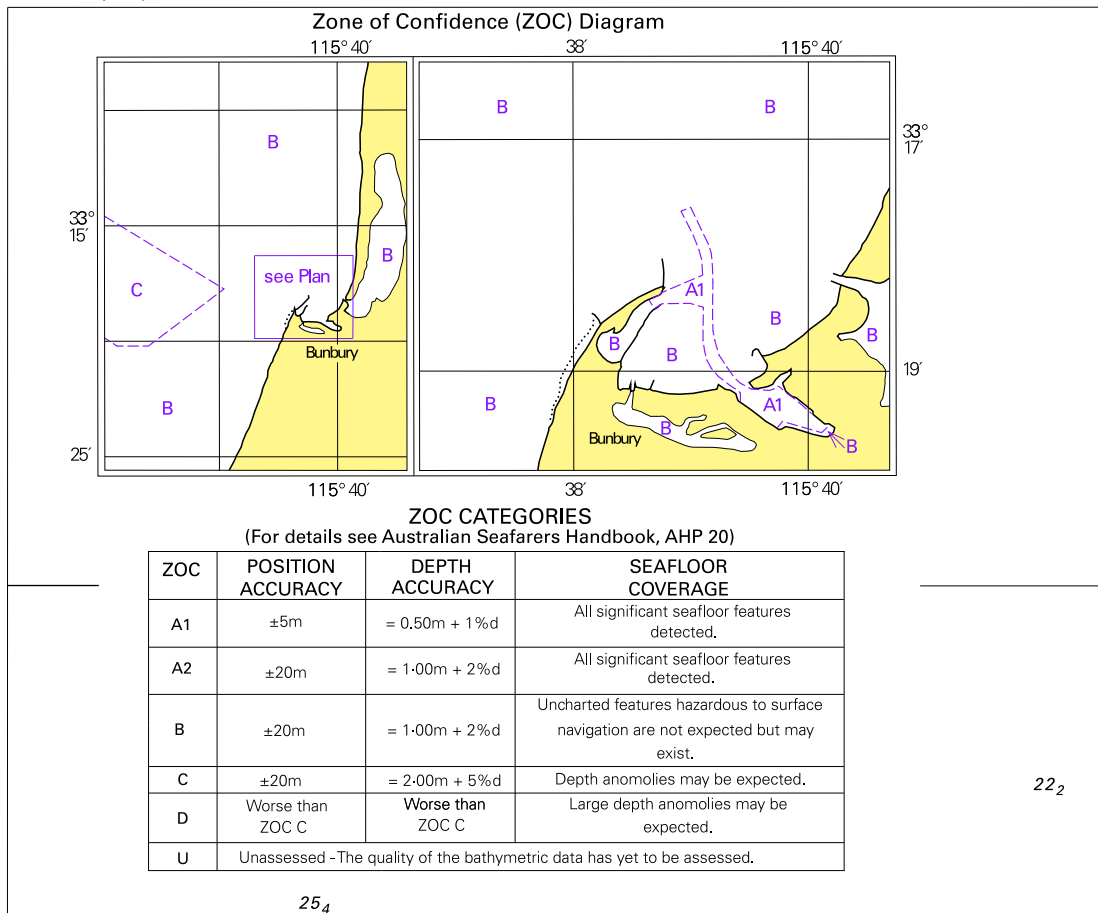


Block for chart Aus 740

© Commonwealth of Australia 2010

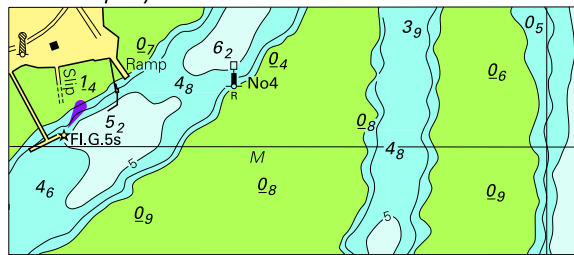
(131.7 x 136.9mm)

To accompany Australian Notice to Mariners 794/2010



22₂

To accompany Australian Notice to Mariners 801/2010



© Commonwealth of Australia 2010 (75-8 x 32-7mm)

Block for chart Aus 150