



16 July 2010

Edition 14

Australian Notices to Mariners are the authority for correcting Australian Charts and Publications

AUSTRALIAN NOTICES TO MARINERS

Notices 734 – 777 

Published fortnightly by the Australian Hydrographic Service

Commodore R. NAIRN RAN
Hydrographer of Australia

SECTIONS.

- I. **Australian Notices to Mariners, including blocks and notes.**
- II. **Hydrographic Reports.**
- III. **Navigational Warnings.**

SUPPLEMENTS.

- I. **Tracings**
- II. **Cumulative List of Australian Notices to Mariners.**
- III. **Temporary and Preliminary Notices in force.**
- IV. **Amendments to Admiralty List of Lights and Fog Signals (Vol K),
Radio Signals (NP 281(2), 282, 283(2), 285, 286(4)) and Sailing
Directions (NP 9, 13, 14, 15, 33, 34, 35, 36, 39, 44, 51, 60, 61, 62, 100, 136).**

© Commonwealth of Australia 2010

This work is copyright. Apart from any use permitted under the Copyright Act 1968, no part may be reproduced by any process, adapted, communicated or commercially exploited without prior written permission from The Commonwealth represented by the Australian Hydrographic Service.

IMPORTANT NOTICE

This edition of Notices to Mariners includes all significant information affecting AHS products which the AHS has become aware of since the last edition. All reasonable efforts have been made to ensure the accuracy and completeness of the information, including third party information, on which these updates are based. The AHS regards third parties from which it receives information as reliable, however the AHS cannot verify all such information and errors may therefore exist. The AHS does not accept liability for errors in third party information.

GENERAL INSTRUCTIONS

The substance of these notices should be inserted on the charts affected.

Bearings are referred to the true compass and are reckoned clockwise from North; those relating to lights are given as seen by an observer from seaward. Positions quoted in permanent notices relate to the horizontal datum for the chart(s). When preliminary or temporary notices affect multiple charts, positions will be provided in relation to only one horizontal datum and that datum will be specified. When the multiple charts do not have a common horizontal datum, mariners will be required to adjust the position(s) for those charts not on the specified datum. The range quoted for a light is its nominal range. Depths are with reference to the chart datum of each chart. Heights are above mean high water springs or mean higher high water, as appropriate.

The capital letter (P) or (T) after the number of any notice denotes a preliminary or temporary notice respectively, which are contained separately at the end of the permanent notices. A star (*) adjacent to the number of a notice indicates that the notice is based on original information.

REPORTING OF DANGERS

Mariners are particularly requested to notify the AUSTRALIAN HYDROGRAPHIC SERVICE, Locked Bag 8801 Wollongong, NSW 2500 (Fax 02-4223 6599, e-mail Hydro.NTM@defence.gov.au or, alternatively by filling in and submitting the [Hydrographic Notes](#) forms located on the web site – www.hydro.gov.au), immediately on the discovery of new dangers or suspected dangers to navigation. For changes or defects in aids to navigation notify AusSAR (Fax 02-6230 6868 or email rccaus@amsa.gov.au).

AUTHORISED USE

Copies of Australian notices are available free of charge from the Australian Hydrographic Service (AHS) website (www.hydro.gov.au) and through the eNotices (email) service (www.hydro.gov.au/enotices/enotices.htm).

Individual Notices may be copied for the purpose of inserting Notice substance on official charts and publications. Paper copies may be printed by chart agents and distributed to customers on a cost recovery basis. Participating chart agents are listed on the AHS website as providing a 'Paper Notices to Mariners' service (www.hydro.gov.au/prodserv/distributors/distributors.htm). Copies of the notices may not be sold for profit without prior written agreement.

NUMERICAL INDEX OF NOTICES TO MARINERS

Edition No 14

Notices	Aus Chart, INT Chart, ENC Cell, AHP
734.....	Aus 53, 331, AU431152, NP 286(4)
735.....	Aus 235, 236, 364, 365, 814
736.....	Aus 250
737.....	Aus 249, 251, 823, 824, AX 0249E, 0823E
738.....	Aus 826, 827
739.....	Aus 828
740.....	Aus 830, AX 6027S
741.....	Aus 281, 834, 835
742.....	Aus 836
743.....	Aus 622
744.....	Aus 523, 654
745.....	Aus 722, AX 72722
746.....	Aus 328, 743
747.....	Aus 136, 778
748.....	Aus 125
749.....	Aus 171, 173, 174
750.....	Aus 422, 487, 800
751.....	Aus 157
752.....	Aus 143
753.....	Aus 148, 487
754.....	Aus 4621, 4622, INT 621, 622, AX 4621F
755(T).....	Aus 222, AU5XX222
756(T).....	Aus 236, 237, AU428153, 5237X8
757(T).....	Aus 235
758(T).....	Aus 244, 245, AU5244X5
759(T).....	Aus 244, 245, AU5244X5
760(T).....	Aus 244, 245, AU5244X5
761(T).....	Aus 260, 261, 367, 822, AX 0260E, 0367E, 0822E, 60260, 67261, AU423150, 5261P2
762(T).....	Aus 250, AU5250P1
763(T).....	Aus 252, 253, AU421148, 5253P1
764(T).....	Aus 258, AU5258P1
765(T).....	Aus 4, 701, AU413141
766(T).....	Aus 6
767(T).....	Aus 24, 27, 28, AU5XXX24
768(T).....	Aus 40, 732, 733, AU417123
769(T).....	Aus 324
770(T).....	Aus 52, 53, AU5XXX52
771(T).....	Aus 327, 742, AU421116
772(T).....	Aus 64, 743, 744, AU422114, 422115
773(T).....	Aus 117, AX 70117, AU433115
774(T).....	Aus 136, AU5136P3
775(T).....	Aus 125, 345, 346, 444, 780
776(T).....	Aus 154
777(T).....	Aus 487, AU340145

NUMERICAL INDEX OF CHARTS AFFECTED

Edition No 14

Aus Chart	Notices	Aus Chart	Notices
Aus 4.....	765(T)	Aus 778	747
Aus 6.....	766(T)	Aus 780	775(T)
Aus 24.....	767(T)	Aus 800	750
Aus 27.....	767(T)	Aus 814	735
Aus 28.....	767(T)	Aus 822	761(T)
Aus 40.....	768(T)	Aus 823	737
Aus 52.....	770(T)	Aus 824	737
Aus 53.....	734, 770(T)	Aus 826	738
Aus 64.....	772(T)	Aus 827	738
Aus 117.....	773(T)	Aus 828	739
Aus 125.....	748, 775(T)	Aus 830	740
Aus 136.....	747, 774(T)	Aus 834	741
Aus 143.....	752	Aus 835	741
Aus 148.....	753	Aus 836	742
Aus 154.....	776(T)	Aus 4621	754
Aus 157.....	751	Aus 4622	754
Aus 171.....	749	AX 0249E	737
Aus 173.....	749	AX 0260E	761(T)
Aus 174.....	749	AX 0367E	761(T)
Aus 222.....	755(T)	AX 0822E	761(T)
Aus 235.....	735, 757(T)	AX 0823E	737
Aus 236.....	735, 756(T)	AX 4621F.....	754
Aus 237.....	756(T)	AX 60260.....	761(T)
Aus 244.....	758(T), 759(T), 760(T)	AX 6027S	740
Aus 245.....	758(T), 759(T), 760(T)	AX 67261.....	761(T)
Aus 249.....	737	AX 70117.....	773(T)
Aus 250.....	736, 762(T)	AX 72722.....	745
Aus 251.....	737		
Aus 252.....	763(T)	INT Chart	Notices
Aus 253.....	763(T)	INT 621	754
Aus 258.....	764(T)	INT 622.....	754
Aus 260.....	761(T)		
Aus 261.....	761(T)	ENC Cell	Notices
Aus 281.....	741	AU340145.....	777(T)
Aus 324.....	769(T)	AU413141.....	765(T)
Aus 327.....	771(T)	AU417123.....	768(T)
Aus 328.....	746	AU421116.....	771(T)
Aus 331.....	734	AU421148.....	763(T)
Aus 345.....	775(T)	AU422114.....	772(T)
Aus 346.....	775(T)	AU422115.....	772(T)
Aus 364.....	735	AU423150.....	761(T)
Aus 365.....	735	AU428153.....	756(T)
Aus 367.....	761(T)	AU431152.....	734
Aus 422.....	750	AU433115.....	773(T)
Aus 444.....	775(T)	AU5XXX24	767(T)
Aus 487.....	750, 753, 777(T)	AU5XXX52	770(P)
Aus 523.....	744	AU5136P3	774(T)
Aus 622.....	743	AU5XX222	755(T)
Aus 654.....	744	AU5237X8	756(T)
Aus 701.....	765(T)	AU5244X5	758(T), 759(T), 760(T)
Aus 722.....	745	AU5250P1	762(T)
Aus 732.....	768(T)	AU5253P1	763(T)
Aus 733.....	768(T)	AU5258P1	764(T)
Aus 742.....	771(T)	AU5261P2	761(T)
Aus 743.....	746, 772(T)		
Aus 744.....	772(T)		

734 AUSTRALIA - Product

Australian Hydrographic Service (AA474045, AA480137), UKHO (AA479885)

New Edition

<i>Chart</i>	<i>Published</i>	<i>Title and description of amendments</i>	<i>Scale</i>	<i>Index Chart</i>	<i>Price</i>
Aus 53	18/6/2010	Australia - North West Coast - Western Australia - Approaches to Port Hedland 19° 51'.90 S - 20° 19'.90 S 118° 19'.86 E - 118° 38'.60 E <i>New edition referred to WGS84 datum and updated for new anchorages.</i>	1:50 000	Aus 5000	\$35.00

New Electronic Navigation Chart (Seafarer ENC)

<i>Cell Name</i>	<i>Released</i>	<i>Title</i>
AU431152	July 2010	Tasman Sea - Scotts Head

New Chart to be published shortly

<i>Chart</i>	<i>Title</i>	<i>Scale</i>	<i>Expected Publication Date</i>	<i>Expected Stock Availability</i>
Aus 331	Australia - West Coast - Western Australia - Point Quobba to Pepper Point	1:300 000	16 July 2010	23 August 2010

Admiralty publication

<i>NP No</i>	<i>Title</i>	<i>Date</i>	<i>Remarks</i>
NP 286(4)	Admiralty List of Radio Signals. Pilot Services, Vessel Traffic Services and Port Operations. Part 4: Persian Gulf including Oman, Indian Sub-continent, South East Asia and Australasia. Edition 2010/11.	8/7/2010	The 2009/10 edition is thereby cancelled.

Chart permanently withdrawn

<i>Chart</i>	<i>On publication of new edition</i>
Aus 53	Aus 53

For further details refer to the AHS website at www.hydro.gov.au for new edition and new chart stock arrival information.

When placing orders with a chart agent, mariners should advise whether their order pertains to the current edition or the new edition.

735* AUSTRALIA - QUEENSLAND - Flinders Reef - Historic wreck; legend

Australian Hydrographic Service (AA472586)

Aus 235 [694/2010]

Substitute	historic wreck, with 0.27M radius restricted area and legend <i>Historic Wk with Protected Zone (see Note)</i> , for historic wreck	26° 59'.6 S	153° 28'.8 E
------------	---	-------------	--------------

Aus 236 [694/2010]

Substitute	historic wreck, with 0.27M radius restricted area and legend <i>Historic Wk with Protected Zone (see Note)</i> , for historic wreck	26° 59'.6 S	153° 28'.8 E
------------	---	-------------	--------------

Aus 364 [693/2010]

Amend	legend to <i>Historic Wk with Protected Zone (see Note)</i>	26° 59'.7 S	153° 30'.5 E
-------	---	-------------	--------------

Aus 365 [149/2010]

Amend	legend to <i>Historic Wk with Protected Zone (see Note)</i>	26° 59'.7 S	53° 30'.5 E
-------	---	-------------	-------------

Aus 814 [693/2010]

Amend	legend to <i>Historic Wk with Protected Zone (see Note)</i>	26° 59'.5 S	153° 29'.5 E
-------	---	-------------	--------------

736* AUSTRALIA - QUEENSLAND - Hay Point - Light buoy

Maritime Safety Queensland (AA477567)

Aus 250 (plan, Hay Point) [695/2010]

Delete	light buoy	21° 16'.13 S	149° 18'.83 E
--------	------------	--------------	---------------

737* AUSTRALIA - QUEENSLAND - Bailey Islet - Historic wreck

Australian Hydrographic Service (AA472586)

Aus 249 [587/2010]

Insert	historic wreck, with 0.27M radius restricted area and legend <i>Historic Wk with Protected Zone (see Note)</i> , centred on	21° 00'.50 S	149° 30'.42 E
--------	---	--------------	---------------

Delete	legend, Historic Wk (see Note)	21° 00'.5 S	149° 30'.0 E
--------	--------------------------------	-------------	--------------

Aus 251 [1264/2009]

Insert	danger circle to enclose depth, 25 ₈ m	21° 00'.5 S	149° 30'.4 E
--------	---	-------------	--------------

Substitute	historic wreck, with 0.27M radius restricted area and legend <i>Historic Wk with Protected Zone (see Note)</i> , for historic wreck	21° 00'.5 S	149° 30'.4 E
------------	---	-------------	--------------

Aus 823 [587/2010]

Amend	legend to <i>Historic Wk with Protected Zone (see Note)</i>	21° 00'.3 S	149° 29'.6 E
-------	---	-------------	--------------

Aus 824 [411/2010]

Amend	legend to <i>Historic Wk with Protected Zone (see Note)</i>	21° 00'.5 S	149° 29'.5 E
-------	---	-------------	--------------

AX 0249E [587/2010]

Substitute	historic wreck, with 0.27M radius restricted area and legend <i>Historic Wk with Protected Zone (see Note)</i> , for historic wreck	21° 00'.5 S	149° 30'.4 E
------------	---	-------------	--------------

AX 0823E [587/2010]

Amend	legend to <i>Historic Wk with Protected Zone (see Note)</i>	21° 00'.3 S	149° 29'.6 E
-------	---	-------------	--------------

738* AUSTRALIA - QUEENSLAND - Old Reef to Cape Bowling Green - Legends

Australian Hydrographic Service (AA472586)

Aus 826 [775/2008]

Amend	legend to <i>Historic Wk with Protected Zone (see Note)</i>	19° 19'.0 S	147° 37'.3 E
	legend to <i>Historic Wk with Protected Zone (see Note)</i>	19° 22'.1 S	148° 02'.4 E

Aus 827 [540/2010]

Amend	legend to <i>Historic Wk with Protected Zone (see Note)</i>	19° 18'.4 S	147° 38'.5 E
-------	---	-------------	--------------

739* AUSTRALIA - QUEENSLAND - Myrmidon Reef - Legend

Australian Hydrographic Service (AA472586)

Aus 828 [540/2010]

Amend	legend to <i>Historic Wk with Protected Zone (see Note)</i>	18° 16'.4 S	147° 25'.0 E
-------	---	-------------	--------------

740* AUSTRALIA - QUEENSLAND - Flora Reef - Historic wreck

Australian Hydrographic Service (AA472586)

Aus 830 [356/2010]

Substitute	historic wreck, with 0.43M radius restricted area and legend <i>Historic Wk with Protected Zone (see Note)</i> , for historic wreck, centred on	17° 12'.07 S	146° 17'.30 E
------------	---	--------------	---------------

AX 6027S [107/2010]

Substitute	historic wreck, with 0.43M radius restricted area and legend <i>Historic Wk with Protected Zone (see Note)</i> , for historic wreck, centred on	17° 12'.07 S	146° 17'.30 E
------------	---	--------------	---------------

741* AUSTRALIA - QUEENSLAND - Robin Reef to Hannibal Reef - Light beacons altered

Australian Hydrographic Service (AA479659)

Aus 281 [148/2008]

Amend	elevation to 21m	12° 52'.7 S	143° 41'.8 E
-------	------------------	-------------	--------------

Aus 834 [700/2009]

Amend	elevation to 21m	12° 52'.7 S	143° 41'.8 E
-------	------------------	-------------	--------------

Aus 835 [1357/2009]

Amend	elevation to 28m	11° 35'.6 S	142° 56'.7 E
-------	------------------	-------------	--------------

742* AUSTRALIA - QUEENSLAND - Pandora Entrance - Legend

Australian Hydrographic Service (AA472586)

Aus 836 [189/2009]

Amend	legend to <i>Historic Wk with Protected Zone (see Note)</i>	11° 22'.7 S	143° 57'.8 E
-------	---	-------------	--------------

743* PAPUA NEW GUINEA - Port Moresby - Logolu Motu Motu - Light beacon altered

National Maritime Safety Authority PNG Notice 21/2009 (AA398689, AA399866)

Aus 622 (plan, Port Moresby and Napa Napa Wharves) [756/2007]

Amend	light range to 4M	9° 28'.58 S	147° 08'.55 E
-------	-------------------	-------------	---------------

744* PAPUA NEW GUINEA - Finsch Harbour - Light beacon; light buoys

Australian Maritime Systems (AA479534), National Maritime Safety Authority PNG (AA480135)

Aus 523 [477/2010]

Delete light beacon 6° 32'.6 S 147° 50'.6 E

Aus 654 (plan, Langemak Bay and Finsch Harbour) [777/2008]Substitute light beacon, *Fl.R.4s 23ft 3M*, with port lateral topmark for beacon 6° 33'.60 S 147° 51'.32 E

Delete light beacon 6° 32'.84 S 147° 51'.19 E

Aus 654 (plan, Dreger and Schneider Harbours)

Delete buoy 6° 39'.02 S 147° 52'.17 E

buoy 6° 39'.05 S 147° 52'.15 E

745* AUSTRALIA - NORTHERN TERRITORY - Clarence Strait - Marsh Shoal - Light buoy repositioned

Australian Hydrographic Service (AA479659)

Aus 722 [110/2010]Move light buoy 12° 05'.3 S 130° 55'.8 E
to 12° 05'.42 S 130° 55'.87 E**AX 72722 [110/2010]**Move light buoy 12° 05'.3 S 130° 55'.8 E
to 12° 05'.42 S 130° 55'.87 E**746* AUSTRALIA - WESTERN AUSTRALIA - Barrow Island - Legend southwestwards**

Australian FPSO Management Pty Ltd (AA479065)

Aus 328 [697/2010]Amend legend to *Four Rainbow* 20° 54'.3 S 114° 56'.5 E**Aus 743 [659/2010]**Amend legend to *Four Rainbow* 20° 54'.5 S 114° 53'.3 E**747* AUSTRALIA - SOUTH AUSTRALIA - Port Pirie - Depths; bearing**

Australian Hydrographic Service (AA479604), HydroSurvey Australia (AA479772 - AA479774, AA479801, AA479802)

Aus136 [599/2010]Insert depth, *7₇m* 33° 03'.13 S 137° 50'.52 Edepth, *7₉m* 33° 03'.08 S 137° 50'.88 E

Delete depth, 9m 33° 03'.3 S 137° 50'.4 E

Aus136 (plan, Port Pirie)*On certain copies only*Amend bearing to *182.1°* 33° 09'.5 S 138° 00'.9 E**Aus 778 [599/2010]**Insert depth, *7₇m* 33° 03'.13 S 137° 50'.52 E

Delete depth, 9m 33° 03'.3 S 137° 50'.4 E

748* AUSTRALIA - SOUTH AUSTRALIA - Beatrice Islets - Beacon

Department for Transport, Energy and Infrastructure SA (AA437362)

Aus 125 (plan, Kingscote Harbour) [702/2010]

Substitute beacon, without topmark for beacon 35° 39'.87 S 137° 41'.04 E

749* AUSTRALIA - TASMANIA - North West Bay - Dru Point - Light established

Marine and Safety Tasmania Notice M72/2010 (AA477577)

Aus 171 [551/2010]Insert light, *Fl.Bu.5s* 43° 01'.67 S 147° 16'.78 E**Aus 173 [600/2010]**Insert light, *Fl.Bu.5s* 43° 01'.67 S 147° 16'.78 E**Aus 174 (plan, North West Bay) [600/2010]**Insert light, *Fl.Bu.5s* 43° 01'.673 S 147° 16'.775 EAmend legend to *Jetty and Ramp* 43° 01'.65 S 147° 16'.65 E**750* AUSTRALIA - TASMANIA - Craggy Island - Light**

Australian Maritime Safety Authority (AA479726)

Aus 422 [603/2010]Amend light range to *18M* 39° 41'.3 S 147° 40'.7 E**Aus 487 [603/2010]**Amend light range to *18M* 39° 41'.3 S 147° 40'.7 E**Aus 800 [496/2010]**Insert light, *Fl.10s 114m 18M* 39° 41'.25 S 147° 40'.69 E

Delete light 39° 41'.3 S 147° 40'.5 E

751* AUSTRALIA - VICTORIA - Port Phillip - Point Richards - Infrastructure*Former Notice - 1405(T)/2009 is cancelled*

Parks Victoria (AA478768)

Aus 157 [602/2010]

Insert accompanying block 38° 07'.0 S 144° 38'.0 E

752* AUSTRALIA - VICTORIA - Port Phillip - Carrum - Wreck westwards

Port of Melbourne Corporation (DHDB 391258)

Aus 143 [706/2010]Insert depth, *12₃m*, enclosed by danger circle with legend,
Wk 38° 04'.65 S 145° 02'.35 EDelete wreck 38° 04'.7 S 145° 02'.2 E
depth, *11₆m*, and enclosing contour 38° 04'.6 S 145° 02'.2 E

753* AUSTRALIA - BASS STRAIT - Hogan Island - Depths

Australian Hydrographic Service (AA478787)

Aus 148 (plan, Hogan Group) [1111/2009]

Substitute	depth, 5 ₉ m, for depth, 6 ₁ m	39° 15'.73 S	147° 00'.18 E
	depth, 10m, for depth, 10 ₂ m	39° 13'.81 S	147° 00'.98 E

Aus 487 [750/2010]

Substitute	depth, 10m, for depth, 10 ₂ m	39° 13'.8 S	147° 01'.0 E
	depth, 5 ₉ m, for depth, 6 ₁ m	39° 15'.7 S	147° 00'.2 E

754* PACIFIC OCEAN - Solomon Islands - New Georgia Island - Light established

Nawae Construction Ltd (AA447037)

Aus 4621 (INT 621) [544/2010]

Insert	light, Fl.10M	8° 23'.0 S	157° 13'.6 E
--------	---------------	------------	--------------

Aus 4622 (INT 622) [498/2010]

Insert	light, Fl.10M	8° 23'.0 S	157° 13'.6 E
--------	---------------	------------	--------------

AX 4621F [544/2010]

Insert	light, Fl.10M	8° 23'.0 S	157° 13'.6 E
--------	---------------	------------	--------------

755(T)/2010 AUSTRALIA - NEW SOUTH WALES - Clarence River - Drilling operations completed

Former Notice - 608(T)/2010 is cancelled
NSW Maritime Notice NC1024/2010 (AA470351)

Cancel this notice on receipt.

Chart formerly affected - Aus 222 - AU5XX222**756(T)/2010 AUSTRALIA - QUEENSLAND - Brisbane River - Fisherman Islands - Drilling operations completed**

Former Notice - 670(T)/2010 is cancelled
Maritime Safety Queensland Notice 571/2010 (AA480083)

Cancel this notice on receipt.

Chart formerly affected - Aus 236 - Aus 237 - AU428153 - AU5237X8**757(T)/2010 AUSTRALIA - QUEENSLAND - Mooloolaba - Dredging operations**

Date - Until 15 October 2010
Maritime Safety Queensland Notice 581(T)/2010 (AA480093)

The dredge *Navua* is conducting dredging operations at the entrance to Mooloolah River (26° 40'.75 S 153° 07'.90 E).

A floating pipeline which runs along the south western breakwall is connected to the dredge.

The dredge will display appropriate lights and symbols and will monitor VHF Ch 16.

Mariners are advised to navigate with caution in the area.

Chart temporarily affected - Aus 235**758(T)/2010 AUSTRALIA - QUEENSLAND - Gladstone - Dredging operations**

Date - Until 20 September 2010
Maritime Safety Queensland Notice 582(T)/2010 (AA480116)

The dredge *Wombat* is conducting dredging operations as follows;

<i>Position</i>	<i>Duration</i>
23° 47'.10 S 151° 12'.20 E	12 July - 20 August
23° 49'.30 S 151° 14'.35 E	20 August - 23 August
23° 47'.10 S 151° 12'.20 E	23 August - 2 September

All vessels involved in the operations will monitor VHF Ch 13 and Ch 16.

Mariners are advised to navigate with caution in the area.

Chart temporarily affected - Aus 244 - Aus 245 - AU5244X5

759(T)/2010 AUSTRALIA - QUEENSLAND - Gladstone - Curtis Island - Drilling operations*Date* - Until 9 November 2010

Maritime Safety Queensland Notice 594(T)/2010 (AA480772)

The jack-up barge *Sealift 3* and support vessel *Seapunt 3* are conducting drilling operations in the following positions:

23° 47'.37 S 151° 12'.61 E	23° 47'.20 S 151° 12'.38 E
23° 47'.33 S 151° 12'.54 E	23° 47'.38 S 151° 12'.57 E
23° 47'.42 S 151° 12'.60 E	23° 47'.33 S 151° 12'.38 E
23° 47'.42 S 151° 12'.50 E	23° 47'.58 S 151° 12'.60 E
23° 47'.71 S 151° 12'.14 E	23° 47'.63 S 151° 11'.64 E
23° 48'.07 S 151° 12'.00 E	23° 47'.99 S 151° 11'.50 E
23° 48'.29 S 151° 11'.63 E	23° 47'.67 S 151° 11'.08 E
23° 48'.31 S 151° 11'.10 E	23° 47'.68 S 151° 10'.64 E
23° 48'.89 S 151° 11'.01 E	23° 47'.72 S 151° 13'.91 E
23° 47'.71 S 151° 13'.99 E	23° 47'.88 S 151° 13'.20 E
23° 47'.95 S 151° 13'.25 E.	

The barge will display appropriate shapes and lights and will monitor VHF Ch 13 and Ch 16.

Mariners are advised to navigate with caution in the area.

Chart temporarily affected - Aus 244 - Aus 245 - AU5244X5**760(T)/2010 AUSTRALIA - QUEENSLAND - Gladstone - Fishermans Landing to Curtis Island - Pipeline**

Maritime Safety Queensland Notices 527(T)/2010; 578(T)/2010 (AA475784, AA481478)

A submarine pipeline, marked by unlit orange buoys and lit special buoys, exists between;

23° 47'.15 S 151° 10'.18 E
23° 46'.92 S 151° 10'.44 E
23° 46'.80 S 151° 11'.14 E
23° 46'.83 S 151° 11'.24 E
23° 46'.91 S 151° 11'.89 E.

Mariners are advised to navigate with caution in the area.

Chart temporarily affected - Aus 244 - Aus 245 - AU5244X5**761(T)/2010 AUSTRALIA - QUEENSLAND - Shoalwater Bay - Live firing***Date* - Until 6 August 2010

Maritime Safety Queensland Notice 534(T)/2010 (AA476743)

Live firing activities will be conducted in the Shoalwater Bay training area during the period 23 July to 5 August 2010.

A marine danger area extends to all waters south of the line defined by the following positions:

22° 23'.84 S	150° 18'.02 E
22° 27'.02 S	150° 34'.98 E.

All waters, creeks, beaches and other areas within the declared marine danger area are not available for access.

Chart temporarily affected - Aus 260 - Aus 261 - Aus 367 - Aus 822 - AX 0260E - AX 0367E - AX 0822E - AX 60260 - AX 67261 - AU423150 - AU5261P2

762(T)/2010 AUSTRALIA - QUEENSLAND - Mackay - Depth information*Former Notice - 715(T)/2010 is cancelled*

Maritime Safety Queensland Notice 583(T)/2010 (AA480089)

Available depths as at 7 July 2010:

<i>Remarks</i>	<i>Metres</i>
Entrance Transit (Eastern Bank)	8.6
Entrance Channel	9.0
Swing Basin (Inwards)	8.5
Swing Basin (Outwards)	8.6
* Berth No 1	10.6
Berth No 3	12.3
Berth No 4	10.0
Berth No 5	12.0

* Indicates revised entry.

Caution: Lesser depths may occur in berthing boxes but are not considered to have an impact on shipping.

Chart temporarily affected - Aus 250 - AU5250P1**763(T)/2010 AUSTRALIA - QUEENSLAND - Shute Harbour - Wreck**

Maritime Safety Queensland Notice 568(T)/2010 (AA480151)

A wreck marked by a special light buoy, *Fl. Y.5s*, exists in position 20° 17'.76 S 148° 47'.24 E.**Chart temporarily affected - Aus 252 - Aus 253 - AU421148 - AU5253P1****764(T)/2010 AUSTRALIA - QUEENSLAND - Mourilyan - Depth information***Former Notice - 786(T)/2009 is cancelled*

Maritime Safety Queensland Notice 584(T)/2010 (AA480086)

Available depths as at 8 July 2010:

	<i>Metres</i>
Departure Channel	9.6
Inner Channel	9.6
* Swing Basin	6.0
* Sugar Berth	9.8

* Indicates revised entry.

Shoaling for a distance of 200m to seaward of the berth pocket can develop over time.

Chart temporarily affected - Aus 258 - AU5258P1**765(T)/2010 AUSTRALIA - QUEENSLAND - Weipa - Scientific instruments**

Maritime Safety Queensland Notice 597(T)/2010 (AA481555)

Scientific instruments exist as follows:

<i>Position</i>	<i>Remarks</i>
12° 38'.41 S 141° 38'.17 E	lit buoy, <i>Fl. Y.3s</i>
12° 39'.59 S 141° 38'.12 E	lit buoy, <i>Fl. Y.5s</i>
12° 39'.59 S 141° 40'.45 E	lit buoy, <i>Fl. Y.5s</i>
12° 40'.03 S 141° 40'.40 E	lit buoy, <i>Fl. Y.3s</i>

Chart temporarily affected - Aus 4 - Aus 701 - AU413141

766(T)/2010 AUSTRALIA - QUEENSLAND - Karumba - Depth information*Former Notice - 679(T)/2010 is cancelled*

Maritime Safety Queensland Notice 599(T)/2010 (AA481554)

Available depths as at 11 June 2010:

<i>Berth</i>	<i>Metres</i>
* Entrance Channel	3.6
Mobil/Trinity Wharf	6.3
Raptis Wharf	5.3
Ruby Marine Wharf	5.3
Gulf Freight Services Wharf	6.2
Karumba Cold Stores Wharf	6.2
Seaswift/Shell Wharf	6.2
Karumba Livestock Loading Wharf	5.4
Gulf Freight Services Ramp/Wharf	4.6
Pasminco Export Wharf	4.2

* Indicates revised entry.

Chart temporarily affected - Aus 6**767(T)/2010 AUSTRALIA - NORTHERN TERRITORY - Darwin - Depth information***Former Notice - 662(T)/2007 is cancelled*

Darwin Port Corporation (AA481535)

Available depths as at 15 July 2010:

<i>Berths</i>	<i>Metres</i>
* East Arm 0-100m	11.7
* East Arm 100-200m	12.5
* East Arm 200-300m	12.5
* East Arm 300-400m	12.2
* East Arm 400-500m	12.4
* East Arm 500-600m	13.2
* East Arm 600-700m	11.8
* Bulk Solids Wharf	12.2
* Bulk Liquids Wharf	11.5
* No 2 Fort Hill East	11.2
* No 2 Fort Hill West	10.5
* No 3 Stokes Hill East	4.7
* No 3 Stokes Hill West	5.0
* No 4 Stokes Hill East	1.9
* No 4 Stokes Hill Middle	-0.2
* No 4 Stokes Hill West	3.4
* Fishermans Wharf East	2.1
* Fishermans Wharf West	0.7
* DLNG	13.1 (12.1 in Turning Basin)
* LNG 1-2	10.8
* Perkins VBPS	-0.7

* Indicates new or revised entry.

Chart temporarily affected - Aus 24 - Aus 27 - Aus 28 - AU5XXX24

768(T)/2010 AUSTRALIA - WESTERN AUSTRALIA - Irvine Island - Scientific instruments*Former Notice* - 276(T)/2010 is cancelled*Date* - Until 31 March 2011

Department of Transport Notice 73/2010 (AA480143)

Scientific instruments exist as follows:

<i>Position</i>	<i>Remarks</i>
16° 04'.9 S 123° 33'.3 E	lit buoy, <i>Fl(5)Y.20s</i>
16° 05'.7 S 123° 32'.5 E	lit buoy, <i>Fl(5)Y.20s</i>
16° 06'.2 S 123° 33'.4 E	subsurface.

Chart temporarily affected - Aus 40 - Aus 732 - Aus 733 - AU417123**769(T)/2010 AUSTRALIA - WESTERN AUSTRALIA - James Price Point - Scientific instrument recovered***Former Notice* - 627(T)/2010 is cancelled

MetOcean Engineers (AA478973)

Cancel this notice on receipt.

Chart formerly affected - Aus 324**770(T)/2010 AUSTRALIA - WESTERN AUSTRALIA - Port Hedland - Anchorages***Former Notices* - 721(P)/2010 is cancelled

Port Hedland Port Authority Notice 10/2010 (AA477587)

Cancel this notice on receipt.

Chart formerly affected - Aus 52 - Aus 53 - AU5XXX52**771(T)/2010 AUSTRALIA - WESTERN AUSTRALIA - Regnard Bay - Scientific instrument recovered***Former Notice* - 138(T)/2010 is cancelled

Gardline Marine Sciences Pty Ltd (AA480142)

Cancel this notice on receipt.

Chart formerly affected - Aus 327 - Aus 742 - AU421116

772(T)/2010 AUSTRALIA - WESTERN AUSTRALIA - Thevenard Island to Ashburton Road - Scientific instruments

Former Notice - 632(T)/2010 is cancelled

Date - Until 30 June 2011

MetOcean Engineers (AA478973)

Scientific instruments exist as follows:

<i>Position (WGS84 datum)</i>	<i>Remarks</i>
21° 18'.74 S 115° 06'.64 E	lit buoy, <i>Fl(5)Y.20s</i>
21° 21'.86 S 114° 51'.20 E	5 poly floats
21° 22'.08 S 114° 50'.91 E	lit buoy, <i>Fl(5)Y.20s</i>
21° 22'.08 S 114° 51'.00 E	5 poly floats
21° 25'.95 S 114° 55'.97 E	lit buoy, <i>Fl(5)Y.20s</i>
21° 26'.13 S 114° 55'.85 E	5 poly floats
21° 26'.58 S 114° 47'.53 E	lit buoy, <i>Fl(5)Y.20s</i>
21° 29'.13 S 115° 00'.15 E	5 poly floats
21° 29'.15 S 115° 00'.94 E	lit buoy, <i>Fl(5)Y.20s</i>
21° 29'.21 S 115° 00'.94 E	5 poly floats
21° 30'.12 S 115° 02'.92 E	lit buoy, <i>Fl(5)Y.20s</i>
21° 31'.40 S 114° 54'.90 E	lit buoy, <i>Fl(5)Y.20s</i>
21° 31'.62 S 115° 07'.04 E	lit buoy, <i>Fl(5)Y.20s</i>
21° 31'.63 S 114° 46'.37 E	lit buoy, <i>Fl(5)Y.20s</i>
21° 31'.66 S 115° 07'.07 E	5 poly floats
21° 35'.13 S 114° 56'.38 E	lit buoy, <i>Fl(5)Y.20s</i>
21° 35'.17 S 114° 56'.38 E	5 poly floats
21° 36'.30 S 115° 04'.94 E	lit buoy, <i>Fl(5)Y.20s</i>
21° 36'.30 S 115° 04'.75 E	5 poly floats
21° 38'.11 S 114° 41'.18 E	lit buoy, <i>Fl(5)Y.20s</i>
21° 39'.32 S 115° 00'.77 E	lit buoy, <i>Fl(5)Y.20s</i>

Chart temporarily affected - Aus 64 - Aus 743 - Aus 744 - AU422114 - AU422115**773(T)/2010 AUSTRALIA - WESTERN AUSTRALIA - Fremantle - Parmelia Bank - Light beacon damaged**

Fremantle Ports (AA480132)

No11 light beacon (32° 07'.79 S 115° 42'.12 E) has been damaged and is marked by a lit wreck buoy, *Fl.YBu.*

Chart temporarily affected - Aus 117 - AX 70117 - AU433115**774(T)/2010 AUSTRALIA - SOUTH AUSTRALIA - Whyalla - Light destroyed**

Department for Transport, Energy and Infrastructure SA Notice 33/2010 (AA480777)

The light (33° 00'.81 S 137° 35'.33E) has been destroyed.

Chart temporarily affected - Aus 136 - AU5136P3**775(T)/2010 AUSTRALIA - SOUTH AUSTRALIA - Kangaroo Island - Penneshaw - Light destroyed**

Department for Transport, Energy and Infrastructure SA Notice 31/2010 (AA480781)

The light (35° 43'.00 S 137° 56'.65E (WGS84 datum)) has been destroyed.

Chart temporarily affected - Aus 125 - Aus 345 - Aus 346 - Aus 444 - Aus 780**776(T)/2010 AUSTRALIA - VICTORIA - Port Phillip - Station Pier - Shoaling removed**

Former Notice - 997(T)/2007 is cancelled

Port of Melbourne Corporation (AA479645)

Cancel this notice on receipt.

Chart formerly affected - Aus 154

777(T)/2010 AUSTRALIA - BASS STRAIT - Drilling operations completed

Former Notice - 1466(T)/2009 is cancelled

Origin Energy CSG Ltd (AA417748, AA445117)

Cancel this notice on receipt.

Chart formerly affected - Aus 487 - AU340145

HYDROGRAPHIC REPORTS

<i>Locality</i>	<i>Report</i>	<i>Ship/Authority</i>	<i>Observer</i>
NT- Port Melville Apsley Strait (South)	Buoys Buoys	RV <i>Solander</i>	G Lambert

NAVIGATION WARNINGS

The following radio messages have been received during the period to 16 July 2010. Signal copies of these messages may be destroyed. It is recommended that the reprint of Navigational Warnings should be kept in a file or a book divided into areas. Cancellation should be made on receipt of signals and reprints.

Rigs on location other than those listed in the latest Section III summary are the subject of Radio Navigational Warnings. Rigs in transit will not be the subject of Warnings.

AUSCOAST WARNING

- 151 Cancelled.
- 152 Cancelled.
- 153 Cancelled.
- 154 Cancelled.
- 155 Cancelled.
- 156 Cancelled.
- 157 Cancelled.
- 158 Cancelled.
- 159 Drill rig *Stena Clyde* in position 20° 03'.7 S 115° 11'.0 E. 2.5M clearance requested.
- 160 Cancelled.
- 161 Cancelled.
- 162 Cancelled.
- 163 Drill rig *Ocean Shield* in position 21° 18'.14 S 115° 11'.41 E. 2.5M clearance requested.
- 164 Cancelled.
- 165 Special purpose vessel *Geo Atlantic* conducting seismic survey in area bounded by 20° 10'.0 S to 21° 45'.0 S and 113° 30'.0 E to 115° 12'.0 E. 6M clearance requested.
- 166 Cancelled.
- 167 Cancelled.
- 168 Special purpose vessel *Beaufort Explorer* conducting seismic survey towing 5M cable in area bounded by 14° 31'.0 S to 17° 49'.0 S and 117° 36'.0 E to 121° 20'.0 E. 5M clearance requested.
- 169 Varzin Passage waverider light buoy, *FI(5)Y.20s*, established in position 10° 31'.2 S 141° 56'.8 E.
- 170 Cancelled.
- 171 Cancelled.
- 172 Cancelled.
- 173 Holbourne Island light K3069 (19° 43'.64 S 148° 21'.63 E) unreliable.
- 174 Special purpose vessel *Geo Natuna* conducting seismic survey towing 4M cable in area bounded by 12° 20'.0 S to 13° 00'.0 S and 122° 20'.0 E to 123° 00'.0 E. 5M clearance requested.

NAVAREA X WARNINGS

Nil.

Navigational warnings in force as at 160001UTC JUL 10.**Auscoast**

111 125 134 135 138 140 143 144 148 149 159 163 165 168 169 173 174

Navarea X

Nil.

Summary of mobile drilling rigs as at 160001UTC JUL 10.

<i>Name</i>	<i>Position</i>
Songa Venus	13° 40'.53 S 123° 21'.31 E
EnSCO 7500	19° 57'.21 S 114° 52'.70 E
Stena Clyde	20° 03'.70 S 115° 11'.00 E
Ocean Shield	21° 18'.14 S 115° 11'.41 E
Atwood Eagle	20° 12'.50 S 114° 49'.10 E
Ocean America	19° 24'.13 S 114° 14'.59 E
Jack Bates	20° 28'.60 S 113° 55'.60 E
Ocean Epoch	21° 24'.29 S 113° 55'.98 E
Nan Hai 6	21° 28'.90 S 113° 59'.30 E
Maersk Discoverer	20° 09'.13 S 111° 35'.41 E
Ocean Patriot	38° 10'.86 S 148° 35'.58 E

III

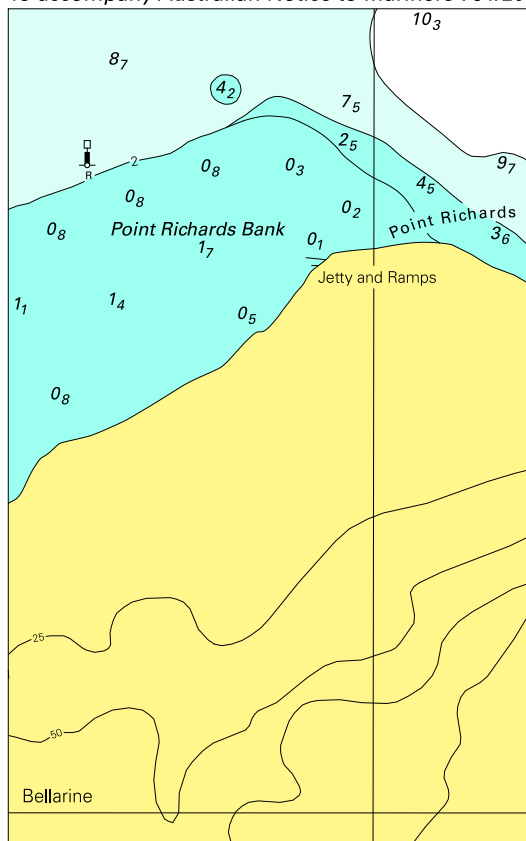
NAVAREA XIV WARNINGS

Nil.

Navarea XIV warnings in force as at 160001UTC JUL 10.

007 018 019

To accompany Australian Notice to Mariners 751/2010



© Commonwealth of Australia 2010

Block for chart Aus 157

(69.3 x 110.6mm)