



2 July 2010

Edition 13

Australian Notices to Mariners are the authority for correcting Australian Charts and Publications

AUSTRALIAN NOTICES TO MARINERS

Notices 688 – 733 

List of Temporary and Preliminary Notices in force

Published fortnightly by the Australian Hydrographic Service

Commodore R. NAIRN RAN
Hydrographer of Australia

SECTIONS.

- I. [Australian Notices to Mariners, including blocks and notes.](#)
- II. [Hydrographic Reports.](#)
- III. [Navigational Warnings.](#)

SUPPLEMENTS.

- I. [Tracings](#)
- II. [Cumulative List of Australian Notices to Mariners.](#)
- III. [Temporary and Preliminary Notices in force.](#)
- IV. [Amendments to Admiralty List of Lights and Fog Signals \(Vol K\), Radio Signals \(NP 281\(2\), 282, 283\(2\), 285, 286\(4\)\) and Sailing Directions \(NP 9, 13, 14, 15, 33, 34, 35, 36, 39, 44, 51, 60, 61, 62, 100, 136\).](#)

© Commonwealth of Australia 2010

This work is copyright. Apart from any use permitted under the Copyright Act 1968, no part may be reproduced by any process, adapted, communicated or commercially exploited without prior written permission from The Commonwealth represented by the Australian Hydrographic Service.

IMPORTANT NOTICE

This edition of Notices to Mariners includes all significant information affecting AHS products which the AHS has become aware of since the last edition. All reasonable efforts have been made to ensure the accuracy and completeness of the information, including third party information, on which these updates are based. The AHS regards third parties from which it receives information as reliable, however the AHS cannot verify all such information and errors may therefore exist. The AHS does not accept liability for errors in third party information.

GENERAL INSTRUCTIONS

The substance of these notices should be inserted on the charts affected.

Bearings are referred to the true compass and are reckoned clockwise from North; those relating to lights are given as seen by an observer from seaward. Positions quoted in permanent notices relate to the horizontal datum for the chart(s). When preliminary or temporary notices affect multiple charts, positions will be provided in relation to only one horizontal datum and that datum will be specified. When the multiple charts do not have a common horizontal datum, mariners will be required to adjust the position(s) for those charts not on the specified datum. The range quoted for a light is its nominal range. Depths are with reference to the chart datum of each chart. Heights are above mean high water springs or mean higher high water, as appropriate.

The capital letter (P) or (T) after the number of any notice denotes a preliminary or temporary notice respectively, which are contained separately at the end of the permanent notices. A star (*) adjacent to the number of a notice indicates that the notice is based on original information.

REPORTING OF DANGERS

Mariners are particularly requested to notify the AUSTRALIAN HYDROGRAPHIC SERVICE, Locked Bag 8801 Wollongong, NSW 2500 (Fax 02-4223 6599, e-mail Hydro.NTM@defence.gov.au or, alternatively by filling in and submitting the [Hydrographic Notes](#) forms located on the web site – www.hydro.gov.au), immediately on the discovery of new dangers or suspected dangers to navigation. For changes or defects in aids to navigation notify AusSAR (Fax 02-6230 6868 or email rccaus@amsa.gov.au).

AUTHORISED USE

Copies of Australian notices are available free of charge from the Australian Hydrographic Service (AHS) website (www.hydro.gov.au) and through the eNotices (email) service (www.hydro.gov.au/enotices/enotices.htm).

Individual Notices may be copied for the purpose of inserting Notice substance on official charts and publications. Paper copies may be printed by chart agents and distributed to customers on a cost recovery basis. Participating chart agents are listed on the AHS website as providing a 'Paper Notices to Mariners' service (www.hydro.gov.au/prodserv/distributors/distributors.htm). Copies of the notices may not be sold for profit without prior written agreement.

NUMERICAL INDEX OF NOTICES TO MARINERS

Edition No 13

| Notices | Aus Chart, INT Chart, ENC Cell, AHP |
|-------------|--|
| 688..... | Temporary and preliminary notice updates for Electronic Navigational Charts |
| 689..... | Aus 154, 316, 335, 336, 614, AU220120, 421117, 434137, 435135, 435137, 436136 |
| 690..... | Amendment to Australian Notice to Mariners No 9 |
| 691..... | Aus 200, 202 |
| 692..... | Aus 609 |
| 693..... | Aus 364, 813, 814 |
| 694..... | Aus 235, 236 |
| 695..... | Aus 250 |
| 696..... | Aus 643 |
| 697..... | Aus 328 |
| 698..... | Aus 331, 747, 748, 749 |
| 699..... | Aus 777 |
| 700..... | Aus 137 |
| 701..... | Aus 130 |
| 702..... | Aus 125 |
| 703..... | Aus 789 |
| 704..... | Aus 799 |
| 705..... | Aus 153 |
| 706..... | Aus 143, 158 |
| 707(T)..... | Aus 194, 195 |
| 708(T)..... | Aus 207, 208, AU5XX208 |
| 709(T)..... | Aus 236, AU5237X8 |
| 710(T)..... | Aus 236, 237, AU428153, 5237X8 |
| 711(T)..... | Aus 237, AU5237X8 |
| 712(T)..... | Aus 236, AU428153 |
| 713(T)..... | Aus 242, 243, AU5XX242 |
| 714(T)..... | Aus 249, 250, AU5250P2 |
| 715(T)..... | Aus 250, AU5250P1 |
| 716(T)..... | Aus 254, 825, AU320149 |
| 717(T)..... | Aus 256, 827, AU320147 |
| 718(T)..... | Aus 256, 257, AU5XX257 |
| 719(T)..... | Aus 13, 14, 305, AU5X14P1 |
| 720(T)..... | Aus 322, 323, 324, 325, 326, 414, 415, 4722, INT 722, AX 0322F, 0415F, 4722F, AU316121, 317121, 318117, 318118, 318121, 319117, 319118, 319119, 417122, 419121 |
| 721(P)..... | Aus 52, 53, AU5XXX52 |
| 722(T)..... | Aus 52, 54, AU5XXX52 |
| 723(T)..... | Aus 52, 53, 54, AU5XXX52 |
| 724(T)..... | Aus 174, AU5174P1 |
| 725(T)..... | Aus 169, AU442148 |
| 726(T)..... | Aus 167, 799, AU442146 |
| 727(T)..... | Aus 167, 168, AU5167X8 |
| 728(T)..... | Aus 157, AU439144 |
| 729(T)..... | Aus 154, AU5XX154 |
| 730(T)..... | Aus 143, 155, AU438144 |
| 731(T)..... | Aus 143, AU5143P1 |
| 732(T)..... | Aus 143, 158, AU439144, 5143P2 |
| 733(T)..... | Temporary and Preliminary Notices |

688 AUSTRALIA - Product - Temporary and preliminary notice updates for Electronic Navigational Charts

Australian Hydrographic Service (AA473372)

The Australian Hydrographic Service will commence releasing temporary and preliminary notices for Electronic Navigational Charts from 16 July 2010. There is currently over 300 extant notices; a full suite of notices will be available to ENC users by January 2011.

Priority for population is:

- a. Depth information for berths
- b. Scientific instruments
- c. Harbour works
- d. Wrecks
- e. Damaged nav aids
- f. Others

Once a notice has been incorporated it will be maintained and aligned to the fortnightly notice to mariners cycle.

Updates will be made available through normal distribution channels, plus an ENC update exchange set aligned to the NTM release cycle will be made available for download at:

<http://www.hydro.gov.au/software/products/products.jsp>

689 AUSTRALIA - Product

Australian Hydrographic Service (AA470326, AA476733, AA478873)

New Edition

| <i>Chart</i> | <i>Published</i> | <i>Title and description of amendments</i> | <i>Scale</i> | <i>Index Chart</i> | <i>Price</i> |
|--------------|------------------|--|--|--------------------|--------------|
| Aus 154 | 21/5/2010 | Australia - South Coast - Victoria - Port of Melbourne - Williamstown and River Yarra 37° 48'.18 S - 37° 52'.72 S 144° 53'.63 E - 144° 56'.98 E Plan: River Yarra 37° 49'.08 S - 37° 49'.48 S 144° 56'.83 E - 144° 57'.78 E <i>New edition with general updating throughout incorporating the Port Phillip Channel Deepening Project.</i> | 1:7 500 1:7 500 | Aus 5001 | \$35.00 |

New Electronic Navigation Chart (Seafarer ENC)

| <i>Cell Name</i> | <i>Released</i> | <i>Title</i> |
|------------------|-----------------|--|
| AU220120 | July 2010 | Australia - Indonesia - Timor Sea |
| AU421117 | July 2010 | Western Australia - Approaches to Port Walcott |
| AU434137 | July 2010 | South Australia - Whyalla to Wallaroo Bay |
| AU435135 | July 2010 | South Australia - Coffin Bay to Sleaford Bay |
| AU435137 | July 2010 | South Australia - Tiparra Bay to Hardwick Bay |
| AU436136 | July 2010 | South Australia - Neptune Islands to Investigator Strait |

New Edition to be published shortly

| <i>Chart</i> | <i>Title</i> | <i>Scale</i> | <i>Expected Publication Date</i> | <i>Expected Stock Availability</i> |
|--------------|--|--------------|----------------------------------|------------------------------------|
| Aus 316 | Australia - North Coast - Northern Territory - Charles Point to Pelican Island | 1:300 000 | 2 July 2010 | 2 August 2010 |
| Aus 335 | Australia - West Coast - Western Australia - Cape Naturaliste to Point D'Entrecasteaux | 1:300 000 | 2 July 2010 | 2 August 2010 |
| Aus 336 | Australia - South Coast - Western Australia - Cape Leeuwin to King George Sound | 1:300 000 | 2 July 2010 | 2 August 2010 |
| Aus 614 | Coral Sea - Diamond Passage | 1:150 000 | 2 July 2010 | 2 August 2010 |

Chart permanently withdrawn

Chart *On publication of new edition*
 Aus 154 Aus 154

For further details refer to the AHS website at www.hydro.gov.au for new edition and new chart stock arrival information.

When placing orders with a chart agent, mariners should advise whether their order pertains to the current edition or the new edition.

690 AUSTRALIA - Product - Amendment to Australian Notice to Mariners No 9

Department of Defence (AA477106)

Page 42

Amend YBBB/R595 Williamtown to YBBB/R574 Williamtown

Page 43

Insert new entry

YBBB/R637A Amberley

Nature of Activity Military flying training

Controlling Authority Dept of Defence - RAAF CONTACT: Detachment
 Commander Amberley: 07 5361 3343

Vertical Limits 5000-NOTAM

Times of Use NOTAM

Chart Aus 426

Chartlet 3

(a) 24° 50' 56" S 153° 38' 38" E

(b) 25° 31' 53" S 154° 17' 17" E

(c) 26° 15' 42" S 153° 29' 56" E

(d) 25° 43' 45" S 153° 05' 56" E.

YBBB/R637B Amberley

Nature of Activity Military flying training

Controlling Authority Dept of Defence - RAAF CONTACT: Detachment
 Commander Amberley: 07 5361 3343

Vertical Limits 5000-NOTAM

Times of Use NOTAM

Chart Aus 426

Chartlet 3

(a) 23° 59' 01" S 154° 10' 14" E

(b) 24° 49' 42" S 155° 02' 03" E

(c) 25° 31' 53" S 154° 17' 17" E

(d) 24° 50' 56" S 153° 38' 38" E.

YBBB/R637C Amberley

Nature of Activity Military flying training

Controlling Authority Dept of Defence - RAAF CONTACT: Detachment
 Commander Amberley: 07 5361 3343

Vertical Limits 5000-NOTAM

Times of Use NOTAM

Chart Aus 426

Chartlet 3

(a) 24° 49' 42" S 155° 02' 03" E

(b) 25° 39' 32" S 155° 54' 00" E

(c) 26° 12' 15" S 154° 55' 58" E

(d) 25° 31' 53" S 154° 17' 17" E.

YBBB/R637D Amberley

Nature of Activity Military flying training

Controlling Authority Dept of Defence - RAAF CONTACT: Detachment
 Commander Amberley: 07 5361 3343

Vertical Limits 5000-NOTAM

Times of Use NOTAM

Chart Aus 424

Chartlet 3

(a) 25° 31' 53" S 154° 17' 17" E

(b) 26° 12' 15" S 154° 55' 58" E

(c) 26° 46' 43" S 153° 53' 29" E

(d) 26° 15' 42" S 153° 29' 56" E.

YBBB/R644 Amberley

Nature of Activity Military flying training

Controlling Authority Dept of Defence - RAAF CONTACT: Detachment
 Commander Amberley: 07 5361 3343

Vertical Limits 5000-NOTAM

Times of Use NOTAM

Chart Aus 424

Chartlet 3

(a) 26° 12' 15" S 154° 55' 58" E

(b) 25° 39' 32" S 155° 54' 00" E

(c) 26° 15' 50" S 156° 30' 28" E

(d) 26° 33' 23" S 155° 46' 55" E

(e) 27° 13' 12" S 154° 44' 29" E

(f) 27° 23' 00" S 154° 28' 52" E

(g) 26° 46' 43" S 153° 53' 29" E.

YBBB/R650A Amberley*Nature of Activity* Military flying training*Controlling Authority* Dept of Defence - RAAF CONTACT: Detachment
Commander Amberley: 07 5361 3343*Vertical Limits* 5000-NOTAM*Times of Use* NOTAM*Chart* Aus 364*Chartlet* 3

(a) 27° 13' 12" S 154° 44' 29" E

(b) 27° 46' 28" S 154° 44' 29" E

(c) 27° 23' 00" S 154° 28' 52" E.

YBBB/R650B Amberley*Nature of Activity* Military flying training*Controlling Authority* Dept of Defence - RAAF CONTACT: Detachment
Commander Amberley: 07 5361 3343*Vertical Limits* 5000-NOTAM*Times of Use* NOTAM*Chart* Aus 424*Chartlet* 3

(a) 26° 33' 23" S 155° 46' 55" E

(b) 26° 15' 50" S 156° 30' 28" E

(c) 27° 16' 34" S 157° 31' 03" E

(d) 28° 50' 10" S 156° 37' 53" E

(e) 27° 46' 28" S 154° 44' 29" E

(f) 27° 13' 12" S 154° 44' 29" E.

YBBB/R668A Amberley*Nature of Activity* Military flying training*Controlling Authority* Dept of Defence - RAAF CONTACT: Detachment
Commander Amberley: 07 5361 3343*Vertical Limits* 5000-NOTAM*Times of Use* NOTAM*Chart* Aus 424*Chartlet* 2

(a) 28° 29' 13" S 153° 57' 39" E

(b) 28° 33' 47" S 154° 09' 20" E

(c) 29° 13' 21" S 155° 07' 10" E

(d) 30° 28' 10" S 154° 25' 53" E

(e) 30° 18' 53" S 153° 29' 32" E

(f) 29° 41' 39" S 153° 19' 07" E

thence the minor arc of a circle of 30 NM radius centred on 29° 11' 51" S 153° 23' 44" E to 28° 52' 13" S 153° 49' 39" E.

YBBB/R668B Amberley*Nature of Activity* Military flying training*Controlling Authority* Dept of Defence - RAAF CONTACT: Detachment
Commander Amberley: 07 5361 3343*Vertical Limits* 5000-NOTAM*Times of Use* NOTAM*Chart* Aus 424*Chartlet* 2

(a) 29° 13' 21" S 155° 07' 10" E

(b) 29° 48' 16" S 155° 59' 22" E

(c) 30° 38' 25" S 155° 31' 25" E

(d) 30° 28' 10" S 154° 25' 53" E.

YBBB/R671A Amberley*Nature of Activity* Military flying training*Controlling Authority* Dept of Defence - RAAF CONTACT: Detachment
Commander Amberley: 07 5361 3343*Vertical Limits* FL125-FL245*Times of Use* NOTAM*Chart* Aus 424*Chartlet* 2

(a) 30° 18' 53" S 153° 29' 32" E

(b) 30° 28' 10" S 154° 25' 53" E

(c) 30° 38' 25" S 155° 31' 25" E

(d) 31° 01' 44" S 155° 18' 14" E

(e) 30° 43' 33" S 153° 24' 27" E.

YBBB/R671B Amberley*Nature of Activity* Military flying training*Controlling Authority* Dept of Defence - RAAF CONTACT: Detachment
Commander Amberley: 07 5361 3343*Vertical Limits* FL245-NOTAM*Times of Use* NOTAM*Chart* Aus 424*Chartlet* 2

(a) 30° 18' 53" S 153° 29' 32" E

(b) 30° 28' 10" S 154° 25' 53" E

(c) 30° 38' 25" S 155° 31' 25" E

(d) 31° 01' 44" S 155° 18' 14" E

(e) 30° 43' 33" S 153° 24' 27" E.

Page 44

Delete entry for YBB/R677A Brisbane*Delete* entry for YBBB/R677B Brisbane

Page 58

Substitute accompanying chartlet 2

Page 59

Substitute accompanying chartlet 3

691* AUSTRALIA - NEW SOUTH WALES - Port Jackson - Mort Bay - Infrastructure

NSW Maritime (DHDB 892069)

Aus 200 [405/2010]

| | | | |
|--------|--------------------|-------------|--------------|
| Insert | accompanying block | 33° 51'.2 S | 151° 11'.5 E |
|--------|--------------------|-------------|--------------|

Aus 202 [583/2010]

| | | | |
|--------|--------------------|-------------|--------------|
| Insert | accompanying block | 33° 51'.2 S | 151° 11'.5 E |
|--------|--------------------|-------------|--------------|

692* AUSTRALIA - NEW SOUTH WALES - Norfolk Island - Rocky Point - Wreck*Former Notice - 51(T)/2010 is cancelled*

Australian Transport Safety Bureau (AA475539)

Aus 609 [356/2009]

| | | | |
|--------|---|--------------|---------------|
| Insert | depth, 44m, enclosed by danger circle with legend, <i>Wk</i> | 29° 03'.27 S | 167° 52'.41 E |
|--------|---|--------------|---------------|

| | | | |
|--------|------------|-------------|--------------|
| Delete | depth, 51m | 29° 03'.5 S | 167° 51'.6 E |
| | depth, 41m | 29° 02'.5 S | 167° 53'.5 E |

Aus 609 (plan, Norfolk and Phillip Islands)

| | | | |
|--------|---|--------------|---------------|
| Insert | depth, 44m, enclosed by danger circle with legend, <i>Wk</i> | 29° 03'.27 S | 167° 52'.41 E |
|--------|---|--------------|---------------|

| | | | |
|--------|------------|--------------|---------------|
| Delete | depth, 47m | 29° 03'.22 S | 167° 52'.33 E |
|--------|------------|--------------|---------------|

693* AUSTRALIA - QUEENSLAND - Point Danger - Obstruction northwestwards*Former Notice - 391(T)/2008 is cancelled*

Maritime Safety Queensland (AA459401, AA476905)

Aus 364 [649/2010]

| | | | |
|--------|---|--------------|---------------|
| Insert | depth, 45fm, enclosed by danger circle with legend, <i>Obstn</i> | 28° 08'.72 S | 153° 30'.73 E |
|--------|---|--------------|---------------|

| | | | |
|--------|-------------|-------------|--------------|
| Delete | depth, 8fm | 28° 09'.0 S | 153° 31'.0 E |
| | depth, 13fm | 28° 08'.6 S | 153° 31'.3 E |

Aus 813 [102/2010]

| | | | |
|--------|---|--------------|---------------|
| Insert | depth, 9m, enclosed by danger circle with legend, <i>Obstn</i> | 28° 08'.62 S | 153° 30'.71 E |
|--------|---|--------------|---------------|

| | | | |
|--------|------------|-------------|--------------|
| Delete | depth, 18m | 28° 08'.7 S | 153° 30'.9 E |
|--------|------------|-------------|--------------|

Aus 814 [649/2010]

| | | | |
|--------|---|--------------|---------------|
| Insert | depth, 9m, enclosed by danger circle with legend, <i>Obstn</i> | 28° 08'.72 S | 153° 30'.65 E |
|--------|---|--------------|---------------|

694* AUSTRALIA - QUEENSLAND - Moreton Bay - Spitfire Channel to Manly - Nav aids*Former Notice - 102(T)/2007 is cancelled*

Maritime Safety Queensland Notices 513/2010, 515/2010, 524/2010 (AA474601, AA474602, AA475263)

Aus 235 [649/2010]

| | | | |
|--------|-----------------------------------|--------------|---------------|
| Amend | light beacon to <i>Fl.R.4s M2</i> | 27° 03'.48 S | 153° 18'.80 E |
| Delete | legend, Dir 110° | 27° 02'.5 S | 153° 15'.7 E |

Aus 236 [650/2010]

| | | | |
|--------|-----------------------------------|-----------------------------|-------------------------------|
| Move | light buoy to | 27° 09'.5 S 27° 09'.60 S | 153° 22'.2 E 153° 22'.14 E |
| Amend | light beacon to <i>Fl.R.4s M2</i> | 27° 03'.5 S | 153° 18'.8 E |
| Delete | legend, Dir 110° | 27° 02'.5 S | 153° 15'.7 E |

Aus 236 (plan, Manly Boat Harbour)

| | | | |
|--------|--|-------------------------------|---------------------------------|
| Insert | starboard lateral light beacon, <i>Fl.G.4s No5</i> , with topmark | 27° 26'.957 S | 153° 11'.745 E |
| Amend | light beacon to <i>Fl.G.4s No7</i> | 27° 27'.05 S | 153° 11'.56 E |
| Move | light beacon to | 27° 26'.91 S 27° 26'.867 S | 153° 11'.89 E 153° 11'.983 E |

695* AUSTRALIA - QUEENSLAND - Mackay - Light altered

Maritime Safety Queensland Notice 529/2010 (AA475994)

Aus 250 (plan, Mackay Harbour) [198/2010]

| | | | |
|-------|------------------------------------|--------------|---------------|
| Amend | light to <i>2Q.Y (hor) (occas)</i> | 21° 06'.59 S | 149° 13'.77 E |
|-------|------------------------------------|--------------|---------------|

696* PAPUA NEW GUINEA - Lae - Light buoy established

National Maritime Safety Authority PNG Notice 24/2010 (AA476598)

Aus 643 [NC 12/3/2010]

| | | | |
|------------|---|-------------|---------------|
| Insert | isolated danger cylindrical light buoy, <i>Q(2)5s</i> , with topmark | 6° 48'.44 S | 146° 58'.06 E |
| Substitute | depth, <i>17,m</i> , for depth, 18m | 6° 48'.35 S | 146° 58'.18 E |

697* AUSTRALIA - WESTERN AUSTRALIA - Montebello Islands - Depths northwestwards

Geoscience Australia (DHDB 812073)

Aus 328 [657/2010]

| | | | |
|--------|--------------------|-------------|--------------|
| Insert | accompanying block | 20° 15'.0 S | 115° 00'.0 E |
|--------|--------------------|-------------|--------------|

698* AUSTRALIA - WESTERN AUSTRALIA - Shark Bay - Cape Peron to Faure Island - Wrecks

Western Australian Museum (AA475730, AA475735, AA475736)

Aus 331 [258/2010]

| | | | |
|--------|--|--------------|---------------|
| Insert | #, with magenta legend <i>Historic Wk</i> , centred on | 25° 25'.58 S | 113° 31'.44 E |
| | #, centred on | 25° 48'.49 S | 113° 54'.08 E |

| | | | |
|--------|--------------------------|-------------|--------------|
| Delete | depth, 0 ₁ fm | 25° 48'.5 S | 113° 53'.8 E |
|--------|--------------------------|-------------|--------------|

Aus 747 [258/2010]

| | | | |
|--------|---|-----------------------------|-------------------------------|
| Insert | #, with magenta legend <i>Historic Wk (see Note)</i> , centred on accompanying note | 25° 25'.50 S 24° 35'.0 S | 113° 31'.52 E 113° 51'.0 E |
|--------|---|-----------------------------|-------------------------------|

Aus 748 [209/2010]

| | | | |
|--------|--|--------------|---------------|
| Insert | #, with magenta legend <i>Historic Wk (see Note)</i> , centred on | 25° 25'.50 S | 113° 31'.52 E |
| | #, centred on | 25° 48'.41 S | 113° 54'.16 E |
| | accompanying note | 25° 30'.5 S | 114° 14'.0 E |

| | | | |
|--------|-------------------------|-------------|--------------|
| Delete | depth, 0 ₃ m | 25° 48'.3 S | 113° 54'.2 E |
|--------|-------------------------|-------------|--------------|

Aus 749 [209/2010]

| | | | |
|--------|---|-----------------------------|-------------------------------|
| Insert | #, with magenta legend <i>Historic Wk (see Note)</i> , centred on accompanying note | 25° 25'.50 S 25° 53'.0 S | 113° 31'.52 E 113° 40'.0 E |
|--------|---|-----------------------------|-------------------------------|

699* AUSTRALIA - SOUTH AUSTRALIA - Wallaroo Bay - Infrastructure

Australian Hydrographic Service (DHDB 736411), Flinders Ports (DHDB 8405)

Aus 777 (plan, Wallaroo Bay) [263/2010]

| | | | |
|--------|--------------------|-------------|--------------|
| Insert | accompanying block | 33° 55'.4 S | 137° 36'.0 E |
|--------|--------------------|-------------|--------------|

700* AUSTRALIA - SOUTH AUSTRALIA - Adelaide - Pipelines

Department of Transport, Energy and Infrastructure SA Notice 29/2010 (AA476010)

Aus 137 [550/2010]

| | | | |
|--------|---|--------------------------------|----------------------------------|
| Insert | supply pipeline, with magenta legend <i>Gas (see Note)</i> , between | 34° 46'.317 S 34° 46'.505 S | 138° 30'.948 E 138° 31'.294 E |
| | supply pipeline, with magenta legend <i>Gas (see Note)</i> , between | 34° 46'.802 S 34° 46'.876 S | 138° 30'.814 E 138° 31'.087 E |

701* AUSTRALIA - SOUTH AUSTRALIA - Semaphore - Depth westwards

Australian Hydrographic Service (AA476099)

Aus 130 [550/2010]

| | | | |
|--------|---------------------------------|---------------|----------------|
| Insert | depth, 20m, enclosed by contour | 34° 50'.432 S | 138° 16'.768 E |
|--------|---------------------------------|---------------|----------------|

702* AUSTRALIA - SOUTH AUSTRALIA - Cape Jervis - Depths

Department for Transport, Energy and Infrastructure (DHDB 1533468)

Aus 125 (plan, Cape Jervis) [306/2010]

| | | | |
|------------|---|---------------|----------------|
| Insert | depth, <i>4₃m</i> | 35° 36'.532 S | 138° 05'.432 E |
| | depth, <i>0₇m</i> , and extend contour S to enclose | 35° 36'.497 S | 138° 05'.433 E |
| | depth, <i>1₁m</i> | 35° 36'.498 S | 138° 05'.402 E |
| Substitute | depth, <i>0₈m</i> , for depth, <i>1₆m</i> | 35° 36'.51 S | 138° 05'.50 E |
| Delete | depth, <i>4₅m</i> | 35° 36'.53 S | 138° 05'.43 E |
| | depth, <i>1₄m</i> | 35° 36'.49 S | 138° 05'.43 E |

703* AUSTRALIA - BASS STRAIT - King Island - Wickham Point - Light sector

Australian Maritime Safety Authority (AA473610)

Aus 789 [265/2010]

| | | | |
|--------|--|-------------|--------------|
| Delete | 300° radial and legend, emanating from light | 39° 35'.3 S | 143° 56'.5 E |
| | 048° radial and legend, emanating from light | 39° 35'.3 S | 143° 56'.5 E |
| | legend, Arc of vis | 39° 42'.9 S | 143° 48'.4 E |

704* AUSTRALIA - TASMANIA - Port Sorell - Light beacon removed

Marine and Safety Tasmania M65/2010 (AA475529, AA475530)

Aus 799 [553/2010]

| | | | |
|--------|--------------|-------------|--------------|
| Delete | light beacon | 41° 08'.3 S | 146° 33'.5 E |
|--------|--------------|-------------|--------------|

705* AUSTRALIA - VICTORIA - Port Phillip - Limeburners Bay - Nav aids altered

Victorian Notice 60/2010 (AA475995)

Aus 153 [602/2010]

| | | | |
|--------|--------------------|-------------|--------------|
| Insert | accompanying block | 38° 04'.4 S | 144° 24'.1 E |
|--------|--------------------|-------------|--------------|

706* AUSTRALIA - VICTORIA - Port Phillip - Dromana - Light altered

Victorian Notice 58/2010 (AA475996)

Aus 143 [552/2010]

| | | | |
|--------|--------------------|-------------|--------------|
| Insert | accompanying block | 38° 19'.5 S | 144° 58'.5 E |
|--------|--------------------|-------------|--------------|

Aus 158 [216/2010]

| | | | |
|-------|-------------------------|--------------|---------------|
| Amend | light to <i>Fl.R.3s</i> | 38° 19'.84 S | 144° 57'.83 E |
|-------|-------------------------|--------------|---------------|

707(T)/2010 AUSTRALIA - NEW SOUTH WALES - Port Kembla - Obstruction; light buoy established

Oceanlinx, Lloyd's List Daily Commercial News (AA478111), Port Kembla Port Corporation (AA462660, AA462714, AA462715)

An obstruction exists in position 34° 28'.27 S 150° 54'.88 E.

An east cardinal spar light buoy, Q(3)10s, exists in position 34° 28'.27 S 150° 55'.04 E.

Mariners are advised to navigate with caution in the area.

Chart temporarily affected - Aus 194 - Aus 195**708(T)/2010 AUSTRALIA - NEW SOUTH WALES - Newcastle - Depth information**

Former Notice - 662(T)/2010 is cancelled

Newcastle Port Corporation (AA478165)

Available depths as at 29 June 2010:

| <i>Berth</i> | <i>Metres</i> |
|---|------------------------------------|
| Western Basin 3 | 11.4 |
| Western Basin 4 | 11.4 |
| Eastern Basin 1 | 11.6 |
| Eastern Basin 2 North of Ch 450 | 11.6 |
| Eastern Basin 2 South of Ch 450 | 11.0 |
| Dockyard 2 (Dredge) | 4.0 |
| Channel Berth | 8.3 |
| Dyke 1 | 12.8 |
| Dyke 2 | 12.8 |
| Dyke 4 | 16.5 |
| Dyke 5 | 16.5 |
| Dyke 6 | 6.3 |
| Mayfield 4 Ch 27 to 266 | 12.8 |
| BHP Wharf 6 to Ch 1050 | 7.8 |
| Kooragang 2 | 11.6 |
| * Kooragang 2 North Dolphin Ch 182 to 228 | 11.1 |
| * Kooragang 2 South Dolphin Ch -92 to 00 | 10.9 |
| Kooragang 3 | 13.3 |
| Kooragang 4 | 16.5 |
| Kooragang 5 | 16.3 |
| Kooragang 6 | 16.5 |
| Kooragang 8 | 15.3 |
| Kooragang 9 | 15.5 |
| Kooragang Ship Receiving KSR | 8.0 |
| Throsby 1 | 9.3 |
| Carrington wharf | To be sounded as and when required |
| * Foreshore Park Berth | 6.5 |
| Elgo wharf | To be sounded as and when required |
| <i>Channels</i> | |
| Entrance Approach | 17.7 |
| Entrance Channel (18.0m) | 18.0 |
| Entrance Channel (17.4m) | 17.4 |
| Entrance Channel (16.8m) | 16.8 |
| Entrance Channel (16.2m) | 16.1 |
| Entrance Channel to Horseshoe | 15.2 |
| * Horseshoe | 15.0 |
| Steelworks Channel to Swinging Basin | 15.0 |
| Swinging Basin | 15.0 |
| Swinging Basin to Mayfield 4 | 12.8 |
| * Hunter River South Arm (Kooragang 6 to Kooragang 9) | 15.2 |
| * Basin Cutting | 12.7 |
| Basin Area to Eastern & Western Basin Berths | 12.3 |
| Basin Area to 1 Throsby | 10.0 |
| Stockton Crossing | 3.6 |

* Indicates new or revised entry.

Chart temporarily affected - Aus 207 - Aus 208 - AU5XX208

2 July 2010

709(T)/2010 AUSTRALIA - QUEENSLAND - Moreton Bay - Manly - Light beacon destroyed

Maritime Safety Queensland Notice 479(T)/2010 (AA473619)

No5 light beacon (27° 26'.96 S 153° 11'.74 E) has been destroyed.

Chart temporarily affected - Aus 236 - AU5237X8

710(T)/2010 AUSTRALIA - QUEENSLAND - Moreton Bay - Fisherman Islands - Light buoys established

Maritime Safety Queensland Notice 547(T)/2010 (AA477804)

Special light buoys, *Fl.Y.2-5s*, exist in positions 27° 20'.98 S 153° 11'.86 E and 27° 21'.22 S 153° 11'.99 E.

Chart temporarily affected - Aus 236 - Aus 237 - AU428153 - AU5237X8

711(T)/2010 AUSTRALIA - QUEENSLAND - Brisbane River - Whyte Island - Light beacon destroyed

Maritime Safety Queensland Notice 554(T)/2010 (AA477893)

The light beacon, *Fl.R.2-5s* (27° 23'.98 S 153° 09'.27 E), has been destroyed; a port lateral light buoy, *Fl.R.2-5s*, exists in situ.

Chart temporarily affected - Aus 237 - AU5237X8

712(T)/2010 AUSTRALIA - QUEENSLAND - Moreton Bay - Deception Bay - Obstruction

Maritime Safety Queensland Notice 537(T)/2010 (AA478558)

An obstruction marked by a special light buoy, *Fl.Y.2-5s*, exists in position 27° 12'.24 S 153° 05'.57 E.

Mariners are advised to navigate with caution in the area.

Chart temporarily affected - Aus 236 - AU428153

713(T)/2010 AUSTRALIA - QUEENSLAND - Bundaberg - Depth information

Former Notice - 316(T)/2010 is cancelled

Maritime Safety Queensland Notice 541(T)/2010 (AA476735)

Available depths as at 22 June 2010:

| | <i>Metres</i> |
|---------------|---------------|
| Sea Reach | 9.4 |
| Middle Reach | 9.0 |
| * inner Reach | 9.0 |
| * Swing Basin | 7.4 |
| Oil Berth | 8.0 |
| * BST Berth | 10.2 |

The deep draught departure channel from the BST berth to Middle Reach has a depth of 9.0m.

* Indicates revised entry.

Chart temporarily affected - Aus 242 - Aus 243 - AU5XX242

714(T)/2010 AUSTRALIA - QUEENSLAND - Hay Point - Depth information*Former Notice - 965(T)/2009 is cancelled*

Maritime Safety Queensland Notice 545/2010 (AA477772)

Available depths as at 25 June 2010:

| | <i>Metres</i> |
|-------------------|---------------|
| * HPS Berth No 1 | 16.2 |
| * HPS Berth No 2 | 16.3 |
| * DBCT Berth No 1 | 17.8 |
| * DBCT Berth No 2 | 17.8 |
| DBCT Berth No 3 | 18.7 |
| * DBCT Berth No 4 | 18.4 |

* Indicates revised entry.

Chart temporarily affected - Aus 249 - Aus 250 - AU5250P2**715(T)/2010 AUSTRALIA - QUEENSLAND - Mackay - Depth information***Former Notice - 966(T)/2009 is cancelled*

Maritime Safety Queensland Notice 563(T)/2010 (AA478737)

Available depths as at 30 June 2010:

| <i>Remarks</i> | <i>Metres</i> |
|---------------------------------|---------------|
| Entrance Transit (Eastern Bank) | 8.6 |
| Entrance Channel | 9.0 |
| * Swing Basin (Inwards) | 8.5 |
| Swing Basin (Outwards) | 8.6 |
| * Berth No 1 | 10.2 |
| * Berth No 3 | 12.3 |
| Berth No 4 | 10.0 |
| * Berth No 5 | 12.0 |

* Caution: Lesser depths may occur in berthing boxes but are not considered to have an impact on shipping.

Chart temporarily affected - Aus 250 - AU5250P1**716(T)/2010 AUSTRALIA - QUEENSLAND - Barb Reef - Beacon destroyed**

Maritime Safety Queensland Notice 532(T)/2010 (AA476018)

The west cardinal beacon (19° 49'.07 S 149° 07'.45 E) has been destroyed.

Chart temporarily affected - Aus 254 - Aus 825 - AU320149**717(T)/2010 AUSTRALIA - QUEENSLAND - Cape Ferguson - Scientific instruments***Date - Until 30 June 2011*

Australian Institute of Marine Science (AA478783), Maritime Safety Queensland Notice 560(T)/2010 (AA478784)

Scientific instruments marked by light buoys exist in the following positions:

19° 16'.84 S 147° 02'.98 E
 19° 16'.84 S 147° 03'.26 E
 19° 16'.84 S 147° 03'.55 E
 19° 16'.84 S 147° 03'.83 E
 19° 16'.84 S 147° 04'.09 E
 19° 16'.57 S 147° 04'.09 E
 19° 16'.30 S 147° 04'.09 E
 19° 16'.03 S 147° 04'.09 E
 19° 15'.76 S 147° 04'.09 E
 19° 15'.49 S 147° 04'.09 E
 19° 15'.39 S 147° 03'.93 E
 19° 15'.39 S 147° 03'.70 E.

Chart temporarily affected - Aus 256 - Aus 827 - AU320147

718(T)/2010 AUSTRALIA - QUEENSLAND - Townsville - Ross River - Light buoy established
 Maritime Safety Queensland Notice 540(T)/2010 (AA476736)

A port lateral light buoy, *Fl.R.2-5s*, exists in position 19° 15'.81 S 146° 50'.46 E.

Chart temporarily affected - Aus 256 - Aus 257 - AU5XX257

719(T)/2010 AUSTRALIA - NORTHERN TERRITORY - Numbulwar to Alyangula - Cable laying operations

Date - Until 19 July 2010
 Telstra (AA472457, AA473638)

Vessels *Sea Link*, *Mystified* and *Bushman* are laying a submarine cable between the following positions;

14° 16'.82 S 135° 44'.57 E
 14° 17'.76 S 135° 45'.14 E
 14° 13'.91 S 135° 58'.84 E
 13° 56'.93 S 136° 15'.53 E
 13° 53'.95 S 136° 24'.63 E
 13° 52'.01 S 136° 25'.26 E.

Mariners are advised to navigate with caution in the area.

Chart temporarily affected - Aus 13 - Aus 14 - Aus 305 - AU5X14P1

720(T)/2010 AUSTRALIA - WESTERN AUSTRALIA - Rowley Shoals - Seismic survey

Date - Until 13 August 2010
 Petroleum Geo-Services (AA474666)

Seismic survey vessel *Beaufort Explorer*, with a 8000m towed array, and support vessel MV *Crest* are conducting a survey in the area bounded by the following positions (WGS84 datum):

18° 50'.0 S 121° 00'.0 E
 18° 50'.0 S 119° 00'.0 E
 18° 25'.0 S 117° 50'.0 E
 16° 00'.0 S 117° 50'.0 E
 14° 25'.0 S 120° 30'.0 E.

**Chart temporarily affected - Aus 322 - Aus 323 - Aus 324 - Aus 325 - Aus 326 - Aus 414 - Aus 415 - Aus 4722 (INT 722) –
 AX 0322F – AX 0415F – AX 4722F - AU316121 - AU317121 - AU318117 - AU318118 - AU318121 - AU319117 - AU319118 -
 AU319119 - AU417122 - AU419121**

721(P)/2010 AUSTRALIA - WESTERN AUSTRALIA - Port Hedland - Anchorages

Date - On or about 14 June 2010

Port Hedland Port Authority Notice 10/2010 (AA477587)

Anchorages with a 370 metre radius swinging circle exist as follows:

| <i>Desig</i> | <i>Position (WGS84 datum)</i> | <i>Desig</i> | <i>Position</i> |
|--------------|-------------------------------|--------------|--------------------------|
| A1 | 20° 08'.2 S 118° 25'.2 E | A2 | 20° 08'.2 S 118° 26'.0 E |
| A3 | 20° 08'.2 S 118° 26'.9 E | A4 | 20° 08'.2 S 118° 27'.8 E |
| A5 | 20° 09'.1 S 118° 25'.1 E | A6 | 20° 09'.1 S 118° 25'.9 E |
| A7 | 20° 09'.1 S 118° 26'.8 E | A8 | 20° 09'.1 S 118° 27'.7 E |
| A9 | 20° 09'.1 S 118° 28'.5 E | A10 | 20° 09'.9 S 118° 24'.6 E |
| A11 | 20° 09'.9 S 118° 25'.5 E | A12 | 20° 09'.9 S 118° 26'.3 E |
| A13 | 20° 09'.9 S 118° 27'.3 E | A14 | 20° 09'.9 S 118° 28'.1 E |
| B1 | 20° 04'.5 S 118° 31'.5 E | B2 | 20° 04'.9 S 118° 30'.7 E |
| B3 | 20° 04'.9 S 118° 32'.3 E | B4 | 20° 05'.3 S 118° 31'.5 E |
| B5 | 20° 05'.7 S 118° 30'.7 E | B6 | 20° 05'.7 S 118° 32'.3 E |
| B7 | 20° 06'.1 S 118° 31'.5 E | B8 | 20° 06'.5 S 118° 30'.7 E |
| B9 | 20° 06'.5 S 118° 32'.3 E | B10 | 20° 06'.9 S 118° 31'.5 E |
| B11 | 20° 07'.3 S 118° 30'.7 E | B12 | 20° 07'.3 S 118° 32'.3 E |
| B13 | 20° 07'.7 S 118° 31'.5 E | B14 | 20° 08'.2 S 118° 30'.7 E |
| B15 | 20° 08'.2 S 118° 32'.3 E | D1 | 20° 04'.0 S 118° 34'.3 E |
| D2 | 20° 04'.9 S 118° 33'.9 E | D3 | 20° 04'.9 S 118° 34'.7 E |
| D4 | 20° 05'.7 S 118° 33'.9 E | D5 | 20° 05'.7 S 118° 34'.7 E |
| D6 | 20° 06'.5 S 118° 33'.9 E | D7 | 20° 06'.5 S 118° 34'.7 E |
| D8 | 20° 07'.3 S 118° 33'.9 E | D9 | 20° 07'.3 S 118° 34'.7 E |
| F1 | 20° 09'.2 S 118° 31'.3 E | F2 | 20° 09'.1 S 118° 32'.3 E |

The anchoring prohibited area has been amended between;

| | |
|----------------------------|----------------------------|
| 20° 11'.43 S 118° 34'.79 E | 20° 07'.75 S 118° 34'.79 E |
| 20° 07'.75 S 118° 33'.37 E | 20° 03'.76 S 118° 33'.37 E |
| 20° 02'.98 S 118° 32'.95 E | 20° 03'.26 S 118° 32'.51 E |
| 20° 03'.63 S 118° 32'.83 E | 20° 09'.40 S 118° 32'.83 E |
| 20° 09'.80 S 118° 31'.04 E | 20° 10'.11 S 118° 30'.48 E |
| 20° 11'.59 S 118° 31'.38 E | 20° 14'.60 S 118° 34'.25 E |
| 20° 12'.52 S 118° 34'.25 E | 20° 12'.52 S 118° 35'.40 E |
| 20° 11'.43 S 118° 35'.40 E | |

Note: These amendments have been incorporated in new editions to be released shortly.**Chart which will be affected - Aus 52 - Aus 53 - AU5XXX52****722(T)/2010 AUSTRALIA - WESTERN AUSTRALIA - Port Hedland - Depth information**

Former Notice - 1080(T)/2009 is cancelled

Port Hedland Port Authority Notice 5/2010 (AA477996)

Available depths as at 31 March 2010:

| <i>Berth</i> | <i>Metres</i> |
|--|---------------|
| PHPA berth 1 | 12.0 |
| PHPA berth 2 | 11.2 |
| PHPA berth 3 | 12.2 |
| BHP Billiton Nelson Point berth A | 18.0 |
| * BHP Billiton Nelson Point berth B | 17.5 |
| BHP Billiton Finucane Island berth C | 17.9 |
| * BHP Billiton Finucane Island berth D | 19.2 |
| Anderson Point berth 1 | 19.1 |
| * Anderson Point berth 2 | 19.7 |

* Indicates revised entry.

Chart temporarily affected - Aus 52 - Aus 54 - AU5XXX52

723(T)/2010 AUSTRALIA - WESTERN AUSTRALIA - Port Hedland - Dredging operations

Date - Until 31 March 2011

Port Hedland Port Authority Notices 2/2010, 9/2010 (AA478122, AA478125)

The dredges *Postnik Yakovlev* and *Leonardo Da Vinci* and barges *Le Sphinx* and *L'Etoile* are conducting dredging operations in a temporary restricted area bounded by the following positions:

20° 19'.27 S 118° 34'.91 E

20° 19'.35 S 118° 34'.86 E

20° 19'.88 S 118° 35'.15 E

20° 19'.74 S 118° 35'.50 E.

The dredge *Leonardo Da Vinci* is connected to a floating pipeline which is attached to a riser in position 20° 19'.81 S 118° 35'.07 E. A submerged pipeline exists between the riser at 20° 20'.32 S 118° 35'.06 E.

Mariners are advised to navigate with caution in the area.

Chart temporarily affected - Aus 52 - Aus 53 - Aus 54 - AU5XXX52

724(T)/2010 AUSTRALIA - TASMANIA - North West Bay - Harbour works

Date - Until 30 November 2010

Marine and Safety Tasmania M68/2010, M73/2010 (AA476746, AA478384)

Works associated with the replacement of the jetty (43° 02'.35 S 147° 16'.51 E) are in progress.

Piles will be established northeast of the existing jetty and will be marked by flashing yellow lights.

The light, *F.Bu*, has been removed.

Mariners are advised to navigate with caution in the area.

Chart temporarily affected - Aus 174 - AU5174P1

725(T)/2010 AUSTRALIA - TASMANIA - Georges Bay - Buoy re-established

Former Notice - 636(T)/2010 is cancelled

Marine and Safety Tasmania Notice M69/2010 (AA476745)

Cancel this notice on receipt.

Chart formerly affected - Aus 169 - AU442148

726(T)/2010 AUSTRALIA - TASMANIA - Five Mile Bluff - Scientific instruments

Date - Until 20 October 2010

Marine and Safety Tasmania Notice M74/2010 (AA478775)

Subsurface scientific instruments marked by buoys (5 metres below the surface) exist in the following positions:

41° 00'.04 S 146° 52'.02 E

41° 00'.28 S 146° 51'.51 E

41° 00'.44 S 146° 51'.96 E

41° 00'.06 S 146° 55'.24 E.

Chart temporarily affected - Aus 167 - Aus 799 - AU442146

727(T)/2010 AUSTRALIA - TASMANIA - River Tamar - Long Reach - Light beacon destroyed

Date - Until 23 July 2010

Marine and Safety Tasmania Notice M71/2010 (AA478186)

No3 light beacon (41° 10'.26 S 146° 55'.80 E) has been destroyed.

Chart temporarily affected - Aus 167 - Aus 168 - AU5167X8

728(T)/2010 AUSTRALIA - VICTORIA - Port Phillip - Point Richards - Harbour works*Date* - Until 15 August 2010

Victorian Notice 62(T)/2010 (AA475997)

Works associated with the construction of a jetty and boat ramp are in progress (38° 06'.51 S 144° 37'.79 E).

All hazards to navigation will display appropriate lights and symbols.

Mariners are advised to navigate with caution in the area.

Chart temporarily affected - Aus 157 - AU439144**729(T)/2010 AUSTRALIA - VICTORIA - Port Phillip - Port Melbourne - Maribyrnong River - Harbour works***Date* - Until 29 July 2010

Victorian Notice 69(T)/2010 (AA478133)

Remediation works on berth No 1 (37° 49'.05 S 144° 54'.38 E) are in progress.

During this period the berth will be closed to shipping.

Mariners are advised to navigate with caution in the area.

Chart temporarily affected - Aus 154 - AU5XX154**730(T)/2010 AUSTRALIA - VICTORIA - Port Phillip - Brighton - Dredging operations***Date* - Until 1 December 2010

Victorian Notice 64(T)/2010 (AA476737)

The dredge *Eva K* is conducting dredging operations in the vicinity of 37° 54'.31 S 144° 58'.90 E.

All hazards to navigation will display appropriate lights and symbols.

Mariners are advised to navigate with caution in the area.

Chart temporarily affected - Aus 143 - Aus 155 - AU438144**731(T)/2010 AUSTRALIA - VICTORIA - Port Phillip - Patterson River - Replacement of tidal gates***Date* - Until 27 September 2010

Victorian Notice 57(T)/2010 (AA478762)

Replacement of tidal gates at Whalers Cove (38° 04'.20 S 145° 08'.05 E) is in progress.

Navigation through the gates will be reduced to one lane. A traffic light management system will be in place for vessels entering or exiting the lakes at the tide gates between Patterson River and Whalers Cove.

Chart temporarily affected - Aus 143 - AU5143P1**732(T)/2010 AUSTRALIA - VICTORIA - Port Phillip - Blairgowrie - Dredging operations; beach renourishment***Date* - Until 30 August 2010

Victorian Notice 67(T)/2010 (AA476738)

Dredging operations are in progress in the vicinity of 38° 21'.42 S 144° 46'.26 E.

The dredge material will be deposited for beach renourishment at position 38° 21'.54 S 144° 46'.71 E.

All hazards to navigation will display appropriate lights and symbols.

Mariners are advised to navigate with caution in the area.

Chart temporarily affected - Aus 143 - Aus 158 - AU439144 - AU5143P2

733(T)/2010 AUSTRALIA - TEMPORARY AND PRELIMINARY NOTICES

Former Notice - 401(T)/2010 is cancelled
 Australian Hydrographic Service (AA449876)

| <i>Notice</i> | <i>Charts affected</i> | <i>Locality and Subject</i> |
|------------------|---|--|
| | | BASS STRAIT |
| 1466/2009 | Aus 487-AU340145 | Drilling operations |
| 687/2010 | Aus 357a-487-AU439148 | Drilling operations |
| | | CORAL SEA |
| | | <i>Lihou Reef</i> |
| 653/2001 | Aus 614 | Shoals |
| | | <i>Mellish Reef</i> |
| 622/2010 | Aus 4604-4620-4621-AX4604F-4620F-4621F-AU130150-220140 | Light buoy off station northwestwards |
| | | NEW SOUTH WALES |
| | | <i>Batemans Bay</i> |
| 317/2006 | Aus 191 | Shoaling; buoy |
| | | <i>Beecroft Peninsula</i> |
| 1035/2008 | Aus 193-807-808-AX0808E-60193-70193-AU5XX193 | Light buoy off station |
| | | <i>Botany Bay</i> |
| 1113/2009 | Aus 198-199-AU5198X9 | Harbour works |
| 606/2010 | Aus 198-199-AU5198X9 | Cable laying operations |
| | | <i>Cape Baily to Ben Buckler</i> |
| 49/2010 | Aus 197-808-809-AX0808E-0809E-63200-AU434151 | Scientific instruments |
| | | <i>Clarence River</i> |
| 608/2010 | Aus 222-AU5XX222 | Drilling operations |
| | | <i>Cowan Creek</i> |
| 1177/2009 | Aus 204-217-AU5XX204 | Raft removed |
| | | <i>Georges River</i> |
| 1438/2009 | Aus 198-AU5198X9 | Light beacon removed; light buoy established |
| | | <i>Green Cape to Ballina Head</i> |
| 708/2008 | Aus 195-197-806-807-808-809-810-811-812-813-AX0808E-0809E | Scientific instruments |
| | | <i>Hastings River</i> |
| 50/2010 | Aus 219 | Bar crossing; light discontinued |
| | | <i>Manly</i> |
| 1009/2009 | Aus 197-200-201-AX63200-AU5X200E | Scientific instruments |
| | | <i>Newcastle</i> |
| 866/2008 | Aus 207-208-361-362-809-AX0809E-AU433151-5XX208 | Obstructions |
| 708/2010 | Aus 207-208-AU5XX208 | Depth information |
| | | <i>Port Jackson</i> |
| 454/2006 | Aus 202-AU5X200W | Shoaling |
| 1439/2009 | Aus 200-203-AU5X200W | Homebush Bay-Scientific instruments; piles; silt curtain |
| 167/2010 | Aus 200-202-AU5X200E | Darling Point-Scientific instrument |
| | | <i>Port Kembla</i> |
| 864/2008 | Aus 195-361-808-AX0808E-AU435150-5XX194 | Obstructions |
| 660/2010 | Aus 194-AU5XX194 | Depth information |
| 707/2010 | Aus 194-195 | Obstruction; light buoy established |
| | | <i>Port Stephens</i> |
| 658/2009 | Aus 209-AU433152 | Shoaling |
| | | <i>Shoalhaven Bight</i> |
| 496/2009 | Aus 807-808-AX0808E-AU435150 | Unexploded ordnance |
| | | NORTHERN TERRITORY |
| | | <i>Darwin</i> |
| 662/2007 | Aus 28 | Depth information |
| 568/2010 | Aus 24-26-28-AX72026-AU5XXX24 | Harbour works |
| | | <i>Melville Island</i> |
| 790/2009 | Aus 20 | Cape Gambier-Reef delineation |

733(T)/2010 AUSTRALIA - TEMPORARY AND PRELIMINARY NOTICES (continued)

| <i>Notice</i> | <i>Charts affected</i> | <i>Locality and Subject</i> |
|-------------------|---|--|
| 719/2010 | Aus 13-14-305-AU5X14P1 | <i>Numbulwar to Alyangula</i> Cable laying operations |
| 950/2004 | Aus 309-311-315 | <i>Troubadour Shoals</i> Scientific instruments |
| QUEENSLAND | | |
| 460/2008 | Aus 255 | <i>Abbot Point</i> Light buoy established |
| 664/2008 | Aus 255-826 | Scientific instruments |
| 1044/2008 | Aus 255-AU5XX255 | Harbour works |
| 1152/2008 | Aus 255-AU5XX255 | Depth information |
| 381/2010 | Aus 251-AU421148 | <i>Acacia Island</i> Light beacon destroyed |
| 819/2008 | Aus 252-253-268-AU5268P2 | <i>Airlie Beach</i> Light buoys established |
| 667/2009 | Aus 252-253-268-AU5268P2 | Wreck |
| 385/2010 | Aus 252-253-268-AU5268P2 | Muddy Bay-Wreck |
| 565/2010 | Aus 252-253-268-AU421148-5268P2 | Wreck |
| 729/2009 | Aus 4-701-AU413141 | <i>Albatross Bay</i> Scientific instruments |
| 505/2010 | Aus 365-AU427153 | <i>Arkwright Point</i> Scientific instrument |
| 968/2009 | Aus 830-AX6027S-AU417145 | <i>Arlington Reef</i> Wreck |
| 716/2010 | Aus 254-825-AU320149 | <i>Barb Reef</i> Beacon destroyed |
| 325/2010 | Aus 252-254-825-AU421148-5254P2 | <i>Bird Island to Groper Point</i> Nav aids |
| 845/2009 | Aus 252-254-AU5254P2 | <i>Black Island</i> Light beacon destroyed |
| 1090/2006 | Aus 238 | <i>Brisbane River</i> Lights altered |
| 1132/2007 | Aus 237-238 | Lytton Reach-Mooring blocks; pipeline |
| 751/2008 | Aus 237 | Fisherman Islands-Harbour works |
| 810/2008 | Aus 237-238-AU5237X8 | Depth information |
| 814/2008 | Aus 238-AU5237X8 | Newstead-Harbour works |
| 1238/2009 | Aus 238-AU5237X8 | Lytton Reach-Harbour works |
| 1377/2009 | Aus 238-AU5237X8 | Kangaroo Point-Harbour works |
| 127/2010 | Aus 236-237-AU428153-5237X8 | Old Bar Cutting-Light beacon destroyed; light buoy established |
| 502/2010 | Aus 237-238-AU5237X8 | Quarantine Flats Reach-Harbour works |
| 560/2010 | Aus 236-237-AU428153-5237X8 | Whyte Island-Harbour works |
| 609/2010 | Aus 238-AU5237X8 | Quarries Reach to Parker Island Reach-Harbour works |
| 670/2010 | Aus 236-237-AU428153-5237X8 | Fisherman Islands-Drilling operations |
| 711/2010 | Aus 237-AU5237X8 | Whyte Island-Light beacon destroyed |
| 657/2008 | Aus 242 | <i>Bundaberg</i> Burnett River-Sea Reach-Light beacon destroyed |
| 561/2010 | Aus 242-AU5XX242 | Inner Reach-Light beacon damaged |
| 610/2010 | Aus 242-AU5XX242 | Long Reach-Cable ferry operations |
| 713/2010 | Aus 242-243-AU5XX242 | Depth information |
| 327/2010 | Aus 262-263-264-830-AX63262-AU417145-5262X4 | <i>Cairns</i> Depth information |
| 620/2009 | Aus 235 | <i>Caloundra</i> Rock outcrop |
| 114/2008 | Aus 826-827 | <i>Cape Bowling Green</i> Scientific instrument |
| 1386/2009 | Aus 826-827-AU320147 | Light buoy off station |
| 134/2010 | Aus 256-827-AU320147 | <i>Cape Cleveland</i> Scientific instrument |
| 717/2010 | Aus 256-827-AU320147 | <i>Cape Ferguson</i> Scientific instruments |

733(T)/2010 AUSTRALIA - TEMPORARY AND PRELIMINARY NOTICES (continued)

| <i>Notice</i> | <i>Charts affected</i> | <i>Locality and Subject</i> |
|------------------|---|---|
| 787/2009 | Aus 831-832-AU415145 | <i>Cape Flattery</i> Wreck |
| 429/2009 | Aus 236-364-814 | <i>Cape Moreton</i> Obstruction southeastwards |
| 94/2009 | Aus 826-827-AU320147 | <i>Cape Upstart</i> Wreck northwards |
| 755/2008 | Aus 371-372-827-828 | <i>Cassady</i> Light beacon destroyed |
| 876/2008 | Aus 270-AU5270P6 | <i>Cooktown</i> Depth information |
| 1136/2009 | Aus 270-AU5270P6 | Light buoy repositioned; light buoy established |
| 175/2010 | Aus 249-823-AX0249E-0823E- AU422149 | <i>Coral Point</i> Light beacon destroyed |
| 726/2009 | Aus 830-AU417145 | <i>Double Island</i> Scientific instrument |
| 222/2010 | Aus 249-250-823-AX0249E-0823E- AU422149-5250P1 | <i>Freshwater Point to Slade Island</i> Scientific instruments |
| 721/2009 | Aus 245-AU5244X5 | <i>Gladstone</i> Scientific instruments |
| 1283/2009 | Aus 244-245-819-AU424151-5244X5 | Scientific instruments |
| 1445/2009 | Aus 246-AU424151 | Boyne Cutting-Light beacon destroyed; light buoy established |
| 171/2010 | Aus 246-AU424151 | Boyne River-Light beacons destroyed |
| 220/2010 | Aus 244-245-246-AU424151-5244X5 | Depth information |
| 612/2010 | Aus 245-819-AU424151-5244X5 | Scientific instruments |
| 673/2010 | Aus 246-819-AU424151 | South Channel-Scientific instrument |
| 836/2009 | Aus 230 | <i>Gold Coast Seaway</i> Shoaling |
| 837/2009 | Aus 230 | Shoaling |
| 1099/2008 | Aus 828-AU419146 | <i>Goold Island</i> Wreck |
| 174/2010 | Aus 366-367-819-820-AX0367E- 0820E-AU424150 | <i>Great Keppel Island</i> Light beacon destroyed |
| 226/2010 | Aus 256-827-AU419146-420146 | <i>Halifax Bay</i> Light buoys established |
| 964/2009 | Aus 249-250-AU5250P2 | <i>Hay Point</i> Depth information |
| 1243/2009 | Aus 249-250-823-AX0249E-0823E- AU422149-5250P2 | Scientific instruments |
| 615/2010 | Aus 249-250-AX0249E-AU422149- 5250P2 | Dredging operations |
| 714/2010 | Aus 249-250-AU5250P2 | Depth information |
| 176/2010 | Aus 249-250-823-824-AX0249E- 0823E-AU422149-5250P2 | <i>Hay Point to Bailey Islet</i> Scientific instruments |
| 436/2010 | Aus 236-364-814-AU428153 | <i>Henderson Rock</i> Wreck |
| 111/2008 | Aus 819 | <i>Heron Island</i> Scientific instruments |
| 318/2010 | Aus 251-823-824-AX0823E-AU421149 | <i>Hesket Rock</i> Light beacon destroyed |
| 512/2010 | Aus 252-AU421148 | <i>Hook Island</i> Light beacon destroyed |
| 930/2007 | Aus 254-825 | <i>Hook Reef</i> Beacon destroyed |
| 382/2010 | Aus 251-252-824-AU421149 | <i>Io Reef</i> Light beacon destroyed |

733(T)/2010 AUSTRALIA - TEMPORARY AND PRELIMINARY NOTICES (continued)

| <i>Notice</i> | <i>Charts affected</i> | <i>Locality and Subject</i> |
|---------------|------------------------------------|--|
| | | <i>Karumba</i> |
| 937/2007 | Aus 6 | Obstruction; buoy |
| 1051/2008 | Aus 6 | Light beacon withdrawn |
| 67/2010 | Aus 6 | Shoaling; light buoys established |
| 567/2010 | Aus 6 | Dredging operations |
| 679/2010 | Aus 6 | Depth information |
| | | <i>Laguna Quays</i> |
| 1052/2006 | Aus 252 | Reduced depth |
| 444/2010 | Aus 252-AU5252P1 | Lights unlit; light beacons damaged |
| | | <i>Leeper Reef</i> |
| 317/2010 | Aus 249-823-AX0249E-0823E-AU422149 | Light buoy off station |
| | | <i>Lisa Jane Shoals</i> |
| 613/2010 | Aus 247-819-820-AU424151 | Scientific instrument |
| | | <i>Lizard Island</i> |
| 118/2008 | Aus 832 | Scientific instruments |
| | | <i>Lucinda</i> |
| 463/2008 | Aus 259 | Light buoy repositioned |
| | | <i>Mackay</i> |
| 724/2009 | Aus 250-AU5250P1 | Harbour works |
| 715/2010 | Aus 250-AU5250P1 | Depth information |
| | | <i>Macona Inlet</i> |
| 447/2010 | Aus 252-AU421148 | Light beacon destroyed |
| | | <i>Mooloolaba</i> |
| 438/2010 | Aus 235 | Shoaling |
| | | <i>Moreton Bay</i> |
| 694/2007 | Aus 235-236 | Depth information and keel clearances |
| 774/2007 | Aus 236 | Scarborough-Shoaling |
| 710/2008 | Aus 235-236 | Spitfire Channel-Light buoys established |
| 750/2008 | Aus 236 | Banana Bank-Light beacon damaged |
| 84/2009 | Aus 236 | Rous Channel-Shoaling |
| 87/2009 | Aus 236-AU5237X8 | Wynnum-Shoaling |
| 321/2009 | Aus 236-AU5237X8 | Manly-Light beacon established |
| 377/2009 | Aus 235-236 | Skirmish Passage-Wreck |
| 380/2009 | Aus 236-814 | Bramble Bay-Bridge construction |
| 661/2009 | Aus 236 | Redland Bay-Light beacon destroyed |
| 662/2009 | Aus 236 | Cleveland Point-Light beacon unlit |
| 128/2010 | Aus 236-AU428153 | Redcliffe-Scientific instrument southeastwards |
| 315/2010 | Aus 236-AU428153 | Green Island-Light beacon destroyed |
| 374/2010 | Aus 236-AU428153 | Pelican Banks-Wreck |
| 503/2010 | Aus 236-AU428153 | Redcliffe-Scientific instrument southeastwards |
| 504/2010 | Aus 235-236-AU428153 | Pumicestone Channel-Bellara-Wreck |
| 667/2010 | Aus 236-AU428153 | Ship to ship transfer |
| 709/2010 | Aus 236-AU5237X8 | Light beacon destroyed |
| 710/2010 | Aus 236-237-AU428153-5237X8 | Fisherman Islands-Light buoys established |
| 712/2010 | Aus 236-AU428153 | Deception Bay-Obstruction |
| | | <i>Mourilyan</i> |
| 786/2009 | Aus 258-AU5258P1 | Depth information |
| 387/2010 | Aus 258-829-AU418146-5258P1 | Light beacon unlit |
| | | <i>Mourilyan Harbour</i> |
| 135/2010 | Aus 258-AU5258P1 | Harbour works |
| | | <i>Percy Isles</i> |
| 1449/2009 | Aus 822-823-AX0822E-0823E-AU322150 | Scientific instrument |
| | | <i>Pioneer Bay</i> |
| 1244/2006 | Aus 268 | Airlie Beach-Harbour works; light buoys. |
| 663/2008 | Aus 252-253-268 | Dredging operations |
| | | <i>Point Danger to Point Lookout</i> |
| 664/2010 | Aus 230-813-814-AU428153-5XX230 | Scientific instruments |
| | | <i>Port Alma</i> |
| 1019/2009 | Aus 265-AU5247P1 | Depth information |

733(T)/2010 AUSTRALIA - TEMPORARY AND PRELIMINARY NOTICES (continued)

| <i>Notice</i> | <i>Charts affected</i> | <i>Locality and Subject</i> |
|------------------------|---|--|
| 1135/2009 | Aus 270-AU5270P1 | <i>Port Douglas</i> Light beacon withdrawn; light buoy established |
| 621/2010 | Aus 270-AU5270P1 | Depth information <i>Proserpine River</i> |
| 445/2010 | Aus 252-824-AU421148 | Light beacon destroyed; light beacon damaged <i>Rocky Point</i> |
| 170/2009 | Aus 829-AU418146 | Light beacon withdrawn <i>Schooner Rock</i> |
| 319/2010 | Aus 251-824-AU421149 | Light beacon destroyed <i>Seaforth</i> |
| 380/2010 | Aus 251-AU421148 | Light beacon destroyed <i>Shute Bay</i> |
| 1451/2009 | Aus 252-253-AU421148 | Obstructions <i>Skardon River</i> |
| 671/2006 | Aus 701 | Shoaling |
| 890/2007 | Aus 701 | Shoaling <i>Southport</i> |
| 777/2009 | Aus 230 | Harbour works <i>Surprise Rock</i> |
| 329/2009 | Aus 252-253-824-AU421149 | Light beacon destroyed <i>Swains Reef</i> |
| 311/2008 | Aus 367-426 | Scientific instruments <i>Thread Shoal to Myrmidon Reef</i> |
| 116/2008 | Aus 828 | Scientific instruments <i>Thursday Island</i> |
| 1025/2009 | Aus 293-299-AU5XX299 | Depth information <i>Townsville</i> |
| 1248/2008 | Aus 256-257-AU5XX257 | Light buoy |
| 1133/2009 | Aus 257-AU5XX257 | Ross Creek-Light beacons withdrawn; light buoys established |
| 62/2010 | Aus 257-AU5XX257 | Ross River-Harbour works |
| 678/2010 | Aus 256-257-AU5XX257 | Depth information |
| 718/2010 | Aus 256-257-AU5XX257 | Light buoy established <i>Upolu Reef</i> |
| 446/2009 | Aus 830-AU417145 | Obstructions <i>Weipa</i> |
| 66/2010 | Aus 4 | Obstruction |
| 391/2010 | Aus 4-AU5XX4P1 | Depth information <i>Whitehaven Bay</i> |
| 384/2010 | Aus 252-253-824-825-AU421149 | Light beacon destroyed <i>Whitsunday Group</i> |
| 511/2010 | Aus 252-254-824-AU421119-5254P1 | Shaw Island-Platypus Rock-Light beacon destroyed <i>Whitsunday Island</i> |
| 323/2010 | Aus 252-253-AU421149 | Whitehaven Beach-Light beacon destroyed |
| 446/2010 | Aus 252-253-254-AU421148 | Reef Point-Light beacon destroyed <i>Whitsundays</i> |
| 383/2010 | Aus 252-254-824-AU421149-5254P1 | Spitfire Rock-Light beacon destroyed <i>Yorkeys Knob</i> |
| 1387/2009 | Aus 262-830-AX6027S-63262-AU417145-5262X4 | Light buoy established |
| SOUTH AUSTRALIA | | |
| 830/2008 | Aus 130-780-781 | <i>Barker Inlet</i> Shoaling |
| 236/2010 | Aus 130-AU435138 | Shoaling <i>Glenelg</i> |
| 1161/2008 | Aus 125 | Shoaling |
| 458/2009 | Aus 125-781 | Restricted area; light buoys <i>Largs Bay</i> |
| 456/2009 | Aus 130-138-780-781-AU435138-5137X8 | Light buoy off station |

733(T)/2010 AUSTRALIA - TEMPORARY AND PRELIMINARY NOTICES (continued)

| <i>Notice</i> | <i>Charts affected</i> | <i>Locality and Subject</i> |
|------------------|--|---|
| 573/2010 | Aus 139-780 | <i>MacDonnell Sound</i> Wreck |
| 520/2009 | Aus 347 | <i>Murray River</i> Dredging operations; exclusion zone |
| 1208/2008 | Aus 343-AX0343E | <i>Neptune Islands</i> Scientific instrument |
| 1396/2009 | Aus 343-345-AX0343E | <i>North Neptunes</i> Scientific instruments |
| 455/2009 | Aus 136-444-778 | <i>Point Lowly</i> Light unreliable |
| 720/2008 | Aus 137 | <i>Port Adelaide</i> Shoaling |
| 265/2008 | Aus 344-778 | <i>Port Augusta</i> Light beacon destroyed |
| 415/2008 | Aus 344-778 | Two Hummock Point-Light beacon altered <i>Port Stanvac</i> |
| 335/2009 | Aus 125-780-781 | Scientific instrument |
| 572/2009 | Aus 125-780-781 | Pipeline |
| 87/2010 | Aus 125-780-781 | Offshore works <i>Port Willunga</i> |
| 921/2009 | Aus 780 | Light buoy off station <i>Wallaroo</i> |
| 176/2009 | Aus 777 | Depth information <i>Whidbey Isles to Kangaroo Island</i> |
| 1082/2009 | Aus 342-343-345-346-444-AX0343E- AU336135 | Scientific instruments |
| 268/2008 | Aus 125 | <i>Worrina Cove</i> Shoaling |
| TASMANIA | | |
| 1086/2009 | Aus 167-168-AU5167X8 | <i>Bell Bay</i> Light beacon destroyed |
| 922/2009 | Aus 163 | <i>Burnie</i> Depth information |
| 979/2009 | Aus 164-AU5164P1 | <i>Devonport</i> Depth information |
| 726/2010 | Aus 167-799-AU442146 | <i>Five Mile Bluff</i> Scientific instruments |
| 529/2010 | Aus 171-796-AU443147 | <i>Frederick Henry Bay</i> Light beacon destroyed |
| 922/2005 | Aus 179-800 | <i>Furneaux Group</i> Franklin Sound-Shoaling |
| 131/2008 | Aus 169 | <i>Georges Bay</i> Shoaling |
| 91/2010 | Aus 169 | Wreck <i>Hobart</i> |
| 509/2008 | Aus 171-172 | Obstructions |
| 522/2009 | Aus 172 | Depth information <i>Huon River</i> |
| 528/2010 | Aus 173-795-AU444147 | Light beacon destroyed <i>Little Oyster Cove</i> |
| 88/2010 | Aus 171-173-AU444147 | Harbour works; light beacon discontinued <i>North West Bay</i> |
| 724/2010 | Aus 174-AU5174P1 | Harbour works <i>Port Dalrymple</i> |
| 1142/2009 | Aus 167-799-AU442146-5167X8 | Scientific instruments |
| 143/2010 | Aus 167-AU5167X8 | Light buoy off station <i>River Derwent</i> |
| 795/2009 | Aus 171 | Hobart-Buoy established |

733(T)/2010 AUSTRALIA - TEMPORARY AND PRELIMINARY NOTICES (continued)

| <i>Notice</i> | <i>Charts affected</i> | <i>Locality and Subject</i> |
|----------------------|--|---|
| 1085/2009 | Aus 167-799-AU442146-5167X8 | <i>River Tamar</i> Port Dalrymple-Reclamation works |
| 727/2010 | Aus 167-168-AU5167X8 | Long Reach-Light beacon destroyed |
| 460/2009 | Aus 175 | <i>Spring Bay</i> Depth information |
| 685/2010 | Aus 170-175-AU443147-5XX175 | <i>Triabunna</i> Beacon destroyed |
| TIMOR SEA | | |
| 569/2010 | Aus 314-319-4721-4722-AX0314F-0319F-AU313124 | <i>Osborn Passage</i> Platform; mooring buoys |
| 476/2006 | Aus 312 | <i>Sahul Banks</i> Scientific instruments |
| 223/2009 | Aus 312-4721-AX0312F-4721F-AU311126 | Navaid; racon non operational |
| TORRES STRAIT | | |
| 65/2010 | Aus 293-299-AU311142-5XX299 | <i>Madge Reef</i> Light beacon unlit |
| 389/2010 | Aus 376-377-840-AX60377-AU410143 | <i>Stephens Islet</i> Wreck northwards |
| 516/2010 | Aus 289-296-AU411141 | <i>Varzin Passage</i> Light buoy to be established |
| VICTORIA | | |
| 1300/2009 | Aus 801-AU439145 | <i>Anderson Inlet</i> Shoaling |
| 1301/2009 | Aus 181-182-AU439146 | <i>Barry Beach</i> Shoaling |
| 1467/2009 | Aus 143-AU439144 | <i>Barwon River</i> Lights trial |
| 1468/2009 | Aus 143-788-AU439144 | Bridge construction; exclusion zones; light buoys established |
| 526/2010 | Aus 140-348-349-AU439141 | <i>Cape Nelson</i> Light to be altered |
| 1213/2008 | Aus 181-357A-802-AU439146 | <i>Corner Inlet</i> Shoaling |
| 741/2009 | Aus 182 | <i>Lakes Entrance</i> Harbour works |
| 458/2007 | Aus 357a | <i>Ninety Mile Beach</i> Obstructions |
| 800/2009 | Aus 181-182-AU439146 | <i>Port Albert</i> Shoaling |
| 1303/2009 | Aus 181-182-AU439146 | Harbour works |
| 574/2010 | Aus 141 | <i>Port Campbell</i> Lights established; bearing altered |

733(T)/2010 AUSTRALIA - TEMPORARY AND PRELIMINARY NOTICES (continued)

| <i>Notice</i> | <i>Charts affected</i> | <i>Locality and Subject</i> |
|---------------|---|--|
| | | <i>Port Phillip</i> |
| 796/2007 | Aus 143-158 | South channel-Obstruction |
| 797/2007 | Aus 143-158 | South Channel-Obstruction |
| 897/2007 | Aus 154 | Port Melbourne-Shoaling |
| 997/2007 | Aus 154 | Station Pier-Shoaling |
| 223/2008 | Aus 143-154-155 | Port Melbourne-Princes Pier-Harbour works |
| 893/2008 | Aus 154-AU5XX154 | River Yarra-Light beacon withdrawn |
| 230/2009 | Aus 154-AU5XX154 | Depth information |
| 465/2009 | Aus 153-157-AU5XX153 | Geelong-Depth information |
| 1089/2009 | Aus 154-155-AU438144-5XX154 | Williamstown-Harbour works |
| 1344/2009 | Aus 154-155-AU5XX154 | Port Melbourne--Dredging operations |
| 1405/2009 | Aus 143-157-AU439144 | Point Richards-Harbour works |
| 531/2010 | Aus 154-AU5XX154 | Port Melbourne-River Yarra-Harbour works |
| 576/2010 | Aus 143-155-AU438144 | Altona-Harbour works |
| 728/2010 | Aus 157-AU439144 | Point Richards-Harbour works |
| 729/2010 | Aus 154-AU5XX154 | Port Melbourne-Maribyrnong River-Harbour works |
| 730/2010 | Aus 143-155-AU438144 | Brighton-Dredging operations |
| 731/2010 | Aus 143-AU5143P1 | Patterson River-Replacement of tidal gates |
| 732/2010 | Aus 143-158-AU439144-5143P2 | Blairgowrie-Dredging operations; beach renourishment |
| | | <i>Port Welshpool</i> |
| 1302/2009 | Aus 181-AU439146 | Middle Ground Channel-Beacon destroyed |
| | | <i>Western Port</i> |
| 514/2008 | Aus 150-151 | Phillip Island-Shoaling northwards |
| 1346/2009 | Aus 150-801-AU439145 | Wonthaggi-Scientific instrument |
| 280/2010 | Aus 150-151-AU439145 | Phillip Island-McHaffies Point-Light altered |
| | | WESTERN AUSTRALIA |
| | | <i>Albany</i> |
| 729/2006 | Aus 109 | Light beacon; light buoy |
| 633/2010 | Aus 109-AU5XX109 | Harbour works |
| | | <i>Alkimos Reef</i> |
| 1337/2009 | Aus 334-754-AX0334E-0754E-66002-AU432115 | Scientific instrument |
| 82/2010 | Aus 334-754-AX0334E-0754E-66002-AU432115 | Harbour works; exclusion zone |
| | | <i>Barrow Island</i> |
| 75/2010 | Aus 62-742-AU421115 | Harbour works; exclusion zone |
| 76/2010 | Aus 62-742-743-AU421115 | Scientific instruments |
| 139/2010 | Aus 62-742-743-AU421115 | Scientific instruments |
| 395/2010 | Aus 328-415-416-4708-AX0415F-4708F-AU130090-320114-321114 | Wells northwestwards |
| | | <i>Bessieres Island</i> |
| 1464/2009 | Aus 328-415-416-744-4708-AX0415F-4708F-AU130090-422114 | FPSO off station northwestwards |
| | | <i>Binningup</i> |
| 85/2010 | Aus 115-334-335-755-AX0334E-0755E-AU434115 | Offshore works; exclusion zone |
| | | <i>Broome</i> |
| 893/2007 | Aus 50 | Wreck |
| 849/2009 | Aus 50-324 | Gantheaume Bay-Obstruction , light buoy |
| 1079/2009 | Aus 50-51-324-AU418122 | Electronic navigation aid trial |
| | | <i>Browse Island</i> |
| 100/2009 | Aus 319-AX0319F-AU314123 | Scientific instrument northwestwards |
| 626/2010 | Aus 319-320-AX0319F-AU314123 | Scientific instruments northwestwards |
| | | <i>Cape Preston</i> |
| 458/2010 | Aus 327-742-743-AU421116 | Harbour works |

733(T)/2010 AUSTRALIA - TEMPORARY AND PRELIMINARY NOTICES (continued)

| <i>Notice</i> | <i>Charts affected</i> | <i>Locality and Subject</i> |
|---------------|---|---|
| | | <i>Dampier</i> |
| 1034/2007 | Aus 57-58-59 | Depth information |
| 218/2008 | Aus 57-58-59 | Anchorage |
| 259/2008 | Aus 58-59 | Light buoy established |
| 260/2008 | Aus 57-58-59 | Dredging operations; exclusion zone |
| 911/2009 | Aus 57-58-741 | Obstruction |
| 137/2010 | Aus 57-58-59 | Pipeline established |
| 393/2010 | Aus 57-58-59-AU5XXX58 | Dredging operations |
| 520/2010 | Aus 414-415-4603-4708-AX0415F-4603F-4708F-AU130090 | Seismic survey northwestwards |
| 570/2010 | Aus 59-AU5XXX58 | Shoaling |
| 628/2010 | Aus 57-58-59-AU5XXX58 | Navais to be established |
| | | <i>Dampier Archipelago</i> |
| 629/2010 | Aus 327 | Scientific instruments northwestwards |
| 630/2010 | Aus 327 | Scientific instruments northwestwards |
| | | <i>Emu Point</i> |
| 764/2008 | Aus 110-118-759 | Light |
| | | <i>Esperance</i> |
| 337/2010 | Aus 119-AU5119P1 | Depth information |
| 338/2010 | Aus 119-AU434121-5119P1 | Light beacons destroyed |
| | | <i>Exmouth Plateau</i> |
| 1296/2009 | Aus 329-415-416-4708-AX0415F-4708F-AU130090 | Obstruction |
| | | <i>Exmouth Plateau to Onslow</i> |
| 523/2010 | Aus 64-327-328-329-415-416-742-743-744-4603-4708-AX0415F-4603F-4708F-AU130090-320114-321114-422114-422115 | Seismic survey |
| | | <i>Fremantle</i> |
| 470/2008 | Aus 112-113-AX63112 | Obstruction; submarine pipeline; light buoys |
| 273/2009 | Aus 112-754-AX0754E-63112-66002 | Anchorage |
| 793/2009 | Aus 113-AU5XX113 | Depth information |
| 142/2010 | Aus 112-113-117-AX63112-70117-AU5XX113 | Obstruction |
| | | <i>Geographe Bay</i> |
| 518/2009 | Aus 334-335-755-756-AX0334E-0755E-AU434115 | Scientific instrument |
| | | <i>Geraldton</i> |
| 946/2008 | Aus 81 | Depth information |
| 451/2009 | Aus 81-751 | Light buoy off station |
| | | <i>Irvine Island</i> |
| 276/2010 | Aus 40-732-733 | Scientific instruments |
| | | <i>James Price Point</i> |
| 627/2010 | Aus 324 | Scientific instrument |
| | | <i>King George Sound</i> |
| 333/2009 | Aus 109-110-118-AU5XX109 | Scientific instruments |
| | | <i>Kwinana</i> |
| 453/2009 | Aus 114-117-AX70117-AU5111X4 | Light unlit |
| | | <i>Lacepede Islands</i> |
| 456/2010 | Aus 415-4722-AX0415F-4722F | Scientific instrument northwestwards |
| | | <i>Montebello Islands</i> |
| 571/2010 | Aus 327 | Mooring unlit, mooring withdrawn northeastwards |
| 631/2010 | Aus 328-742-AU421115 | Scientific instruments northwestwards |
| | | <i>Muiron Islands</i> |
| 1392/2009 | Aus 328-329-744-AU422114 | Light buoy established northwestwards |
| | | <i>Mullaloo to Wambro Sound</i> |
| 524/2010 | Aus 112-116-117-334-754-755-AX0334E-0754E-0755E-63112-66002-70117-AU432115-433115 | Scientific instruments |
| | | <i>North Muiron Island to Locker Island</i> |
| 182/2010 | Aus 328-329-743-744-AU422114 | Scientific instruments |

733(T)/2010 AUSTRALIA - TEMPORARY AND PRELIMINARY NOTICES (continued)

| <i>Notice</i> | <i>Charts affected</i> | <i>Locality and Subject</i> |
|----------------------|--|--|
| | | <i>North West Cape</i> |
| 914/2009 | Aus 64-328-329-415-416-743-744-AX0415F-AU321114-422114 | Scientific instruments |
| 1335/2009 | Aus 328-329-415-416-744-4708-AX0415F-4708F-AU130090-422114 | Scientific instruments northwestwards |
| 140/2010 | Aus 64-743-744-AU422114 | <i>Onslow</i> Drilling operations |
| 792/2009 | Aus 334-754-AX0334E-0754E-0755E-66002-AU332114-432115-433115 | <i>Perth</i> Scientific instruments westwards |
| 827/2008 | Aus 54 | <i>Port Hedland</i> Lights established |
| 331/2009 | Aus 52-53-54 | Harbour works |
| 332/2009 | Aus 52-53-54 | Dredging operations |
| 677/2009 | Aus 54-AU5XXX54 | Light established |
| 330/2010 | Aus 52-53-54-739-740-AU5XXX52 | Scientific instruments |
| 721/2010 | Aus 52-53-AU5XXX52 | Anchorage |
| 722/2010 | Aus 52-54-AU5XXX52 | Depth information |
| 723/2010 | Aus 52-53-54-AU5XXX52 | Dredging operations |
| 334/2010 | Aus 327-328-AU320115 | <i>Rankin Bank</i> Scientific instruments |
| 394/2010 | Aus 328-AU320115 | Scientific instruments |
| 138/2010 | Aus 327-742-AU421116 | <i>Regnard Bay</i> Scientific instrument |
| 277/2010 | Aus 742-AU421116 | Scientific instruments |
| 457/2010 | Aus 741-742-AU421116 | Scientific instruments |
| 720/2010 | Aus 322-323-324-325-326-414-415-4722-AX0322F-0415F-4722F-AU316121-317121-318117-318118-318121-319117-319118-319119-417122-419121 | <i>Rowley Shoals</i> Seismic survey |
| 1462/2009 | Aus 322-323-324-415-AX0322F-0415F-AU315121-318121 | <i>Scott Reef to James Price Point</i> Scientific instruments |
| 632/2010 | Aus 64-743-744-AU422114-422115 | <i>Thevenard Island to Ashburton Road</i> Scientific instruments |
| 79/2010 | Aus 63-64-328-415-416-742-743-AX0415F-AU321114-422115 | <i>Thevenard Island to Exmouth Plateau</i> Scientific instruments |
| 397/2010 | Aus 116-755-AX0755E-66002-AU433115 | <i>Warnbro Sound</i> Harbour works |
| 1052/2008 | Aus 40-732-733 | <i>Yampi Sound</i> Parakeet Channel-Comber Rock-Buoy off station |
| EAST TIMOR | | |
| 727/2006 | Aus 901 | <i>Dili</i> Point Laguebada-Light unlit |
| 309/2005 | Aus 311-312-313-4721 | <i>Pulau Jaco</i> Light unlit |
| INDIAN OCEAN | | |
| 1135/2006 | Aus 4071 | Scientific instruments |
| 800/2005 | Aus 607 | Light beacon |
| 1458/2009 | Aus 4070-4071 | <i>Sumatera</i> Scientific instruments westwards |
| PACIFIC OCEAN | | |
| 1471/2009 | Aus 399-4622-AU306156 | Scientific instruments |

733(T)/2010 AUSTRALIA - TEMPORARY AND PRELIMINARY NOTICES *(continued)*

| <i>Notice</i> | <i>Charts affected</i> | <i>Locality and Subject</i> |
|------------------|------------------------|------------------------------------|
| | | PAPUA NEW GUINEA |
| | | <i>Bougainville Island</i> |
| 609/2008 | Aus 399-683-4622 | Lights unlit |
| | | <i>Kimbe Island</i> |
| 406/2008 | Aus 547-4622 | Light unlit |
| | | <i>Madang</i> |
| 967/2005 | Aus 646 | Horizontal datum anomaly |
| | | <i>Port Moresby</i> |
| 404/2008 | Aus 379-505-4620 | Fish aggregation device southwards |
| | | <i>Rantan Island</i> |
| 1102/2008 | Aus 399-AU407155 | Light unlit |
| | | SOUTHERN OCEAN |
| 400/2010 | Aus 4709 | Scientific instrument withdrawn |

HYDROGRAPHIC REPORTS

| <i>Locality</i> | <i>Report</i> | <i>Ship/Authority</i> | <i>Observer</i> |
|------------------------------------|----------------|----------------------------|-----------------|
| AUS- AHS product AHS website | ACI Error | HS White Crew | H Hopkins |
| NT- Melville Island | Jetty and ramp | ACV Botany Bay | M Willmore |
| WA- Port Hedland | Tidal streams | MV <i>Pacific Triangle</i> | D Kemp |

NAVIGATION WARNINGS

The following radio messages have been received during the period to 2 July 2010. Signal copies of these messages may be destroyed. It is recommended that the reprint of Navigational Warnings should be kept in a file or a book divided into areas. Cancellation should be made on receipt of signals and reprints.

Rigs on location other than those listed in the latest Section III summary are the subject of Radio Navigational Warnings. Rigs in transit will not be the subject of Warnings.

AUSCOAST WARNING

- 144 Fremantle fairway landfall light buoy K1763.8 (31° 57'.3 S 115° 38'.8 E) temporarily replaced by fairway light buoy, LFI.10s.
- 145 Cancelled.
- 146 Cancelled.
- 147 Cancelled.
- 148 Caldbeck Reef light K1890 (10° 06'.4 S 143° 09'.9 E) unlit.
- 149 Drill rig *Ensco 7500* in position 19° 57'.21 S 114° 52'.70 E. 2.5M clearance requested.
- 150 Cancelled.

NAVAREA X WARNINGS

- 007 Cancelled.

Navigational warnings in force as at 020001UTC JUL 10.**Auscoast**

097 105 111 124 125 134 135 136138 140 143 144 148 149

Navarea X

Nil.

Summary of mobile drilling rigs as at 020001UTC JUL 10.

| <i>Name</i> | <i>Position</i> |
|-------------------|----------------------------|
| Songa Venus | 13° 40'.53 S 123° 21'.31 E |
| Ocean Shield | 21° 12'.80 S 115° 07'.40 E |
| Atwood Eagle | 20° 12'.50 S 114° 49'.10 E |
| Ocean America | 19° 24'.13 S 114° 14'.59 E |
| Ensco 7500 | 19° 57'.21 S 114° 52'.70 E |
| Jack Bates | 20° 28'.60 S 113° 55'.60 E |
| Ocean Epoch | 21° 24'.29 S 113° 55'.98 E |
| Nan Hai 6 | 21° 28'.90 S 113° 59'.30 E |
| Ocean Patriot | 38° 10'.86 S 148° 35'.58 E |
| Maersk Discoverer | 20° 09'.13 S 111° 35'.41 E |

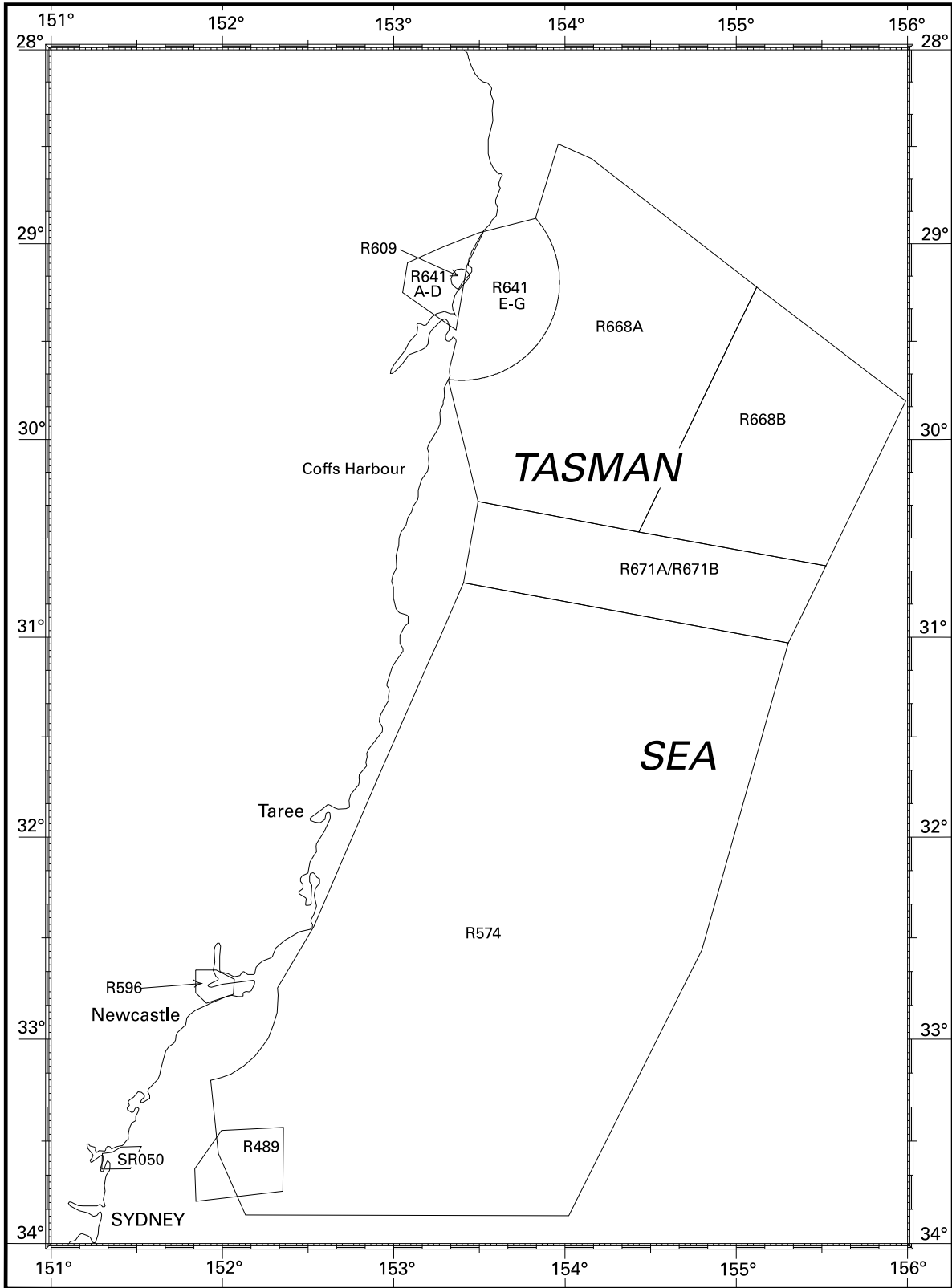
NAVAREA XIV WARNINGS

- 019 South Pacific Ocean Kingdom of Tonga. Aids to navigation. Due to cyclone aftermath all aids to navigation in the approaches to the port of Nuku'Alofa and in the port of Nuku'Alofa are damaged and unlit or reliable.
- 020 Cancelled.

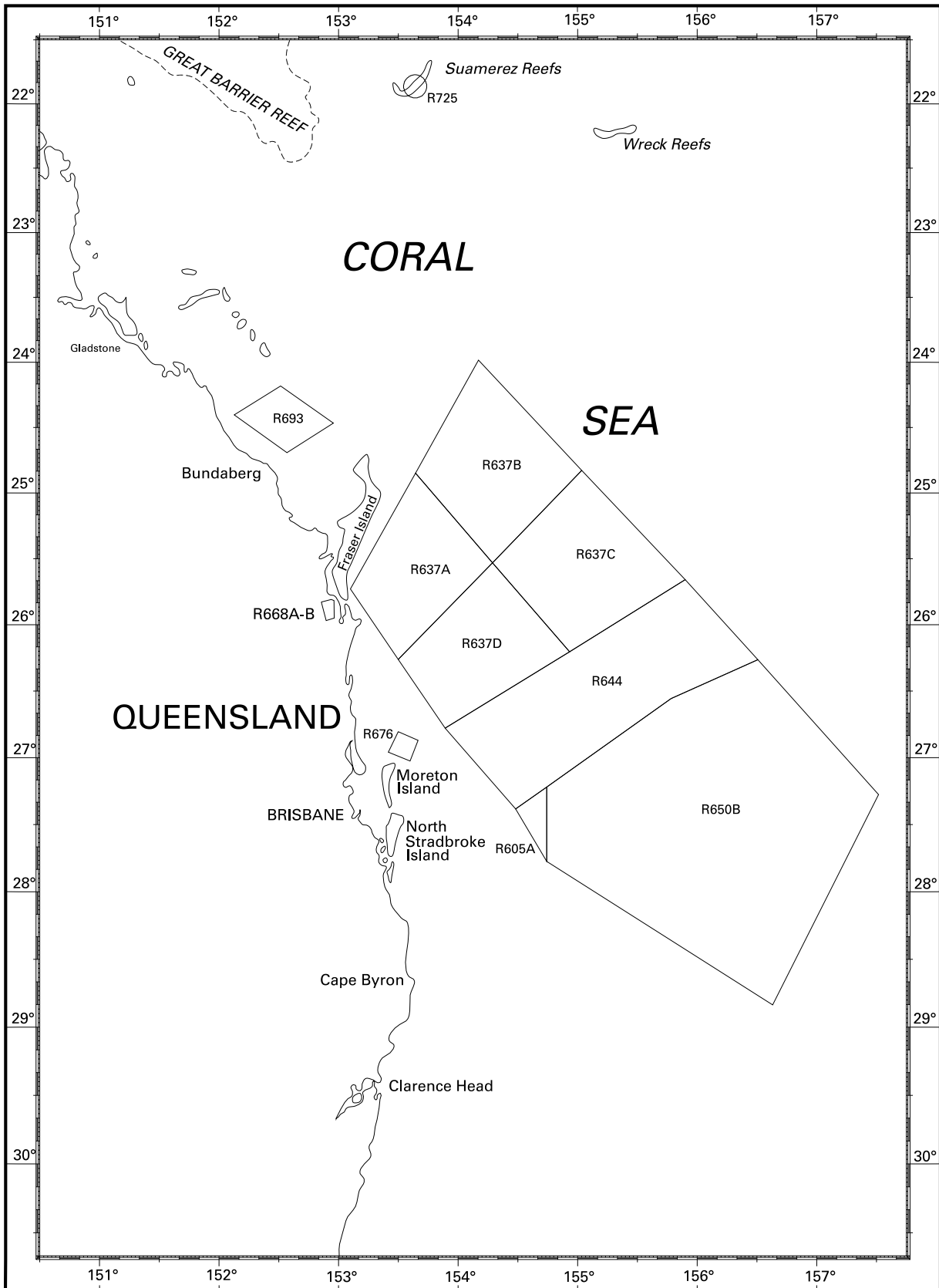
Navarea XIV warnings in force as at 020001UTC JUL 10.

007 018 019

Tasman Sea – Newcastle



Queensland South – Coral Sea



To accompany Australian Notice to Mariners 698/2010

HISTORIC WRECK

The site of an historic wreck is protected from unauthorised interference. For details see Australian Seafarers Handbook AHP 20.

Note for chart Aus 747.

To accompany Australian Notice to Mariners 698/2010

HISTORIC WRECK

The site of an historic wreck is protected from unauthorised interference. For details see Australian Seafarers Handbook AHP 20.

Note for chart Aus 748.

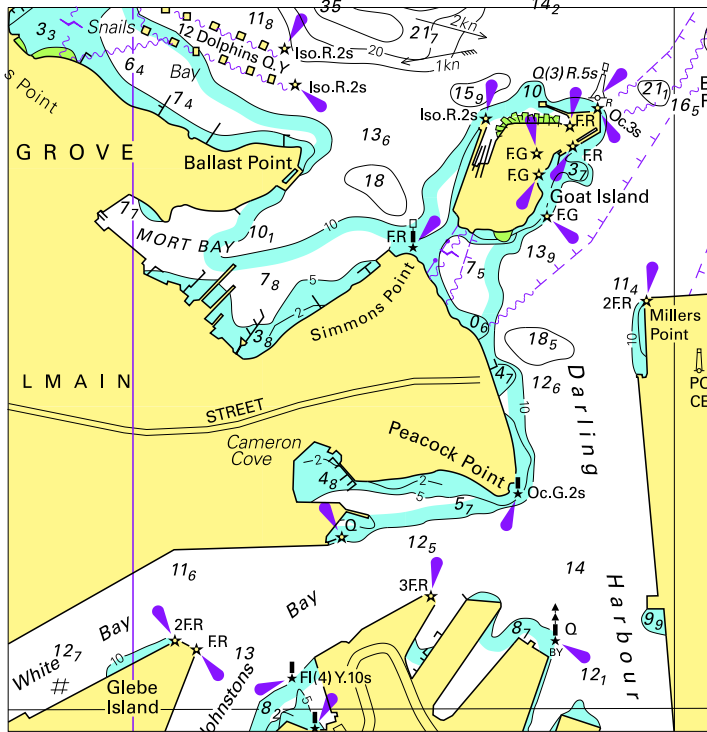
To accompany Australian Notice to Mariners 698/2010

HISTORIC WRECK

The site of an historic wreck is protected from unauthorised interference. For details see Australian Seafarers Handbook AHP 20.

Note for chart Aus 749.

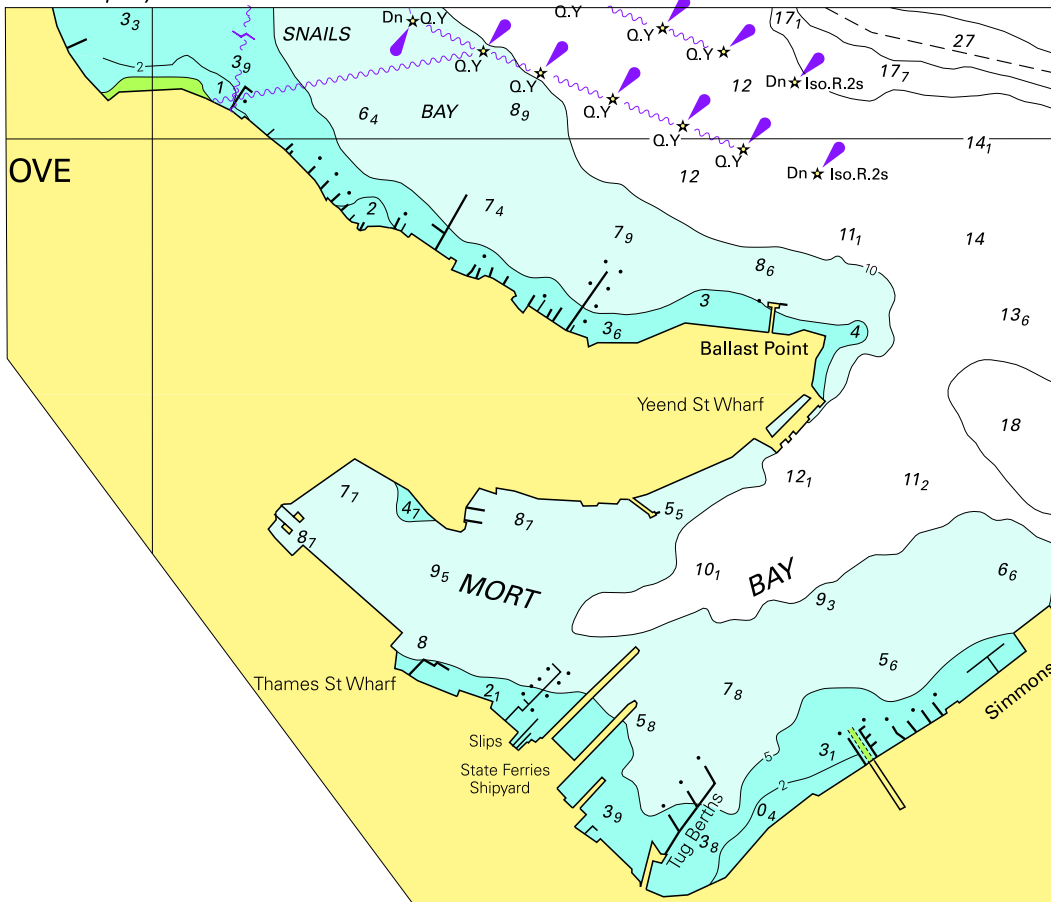
To accompany Australian Notice to Mariners 691/2010



© Commonwealth of Australia 2010 (93.0 x 95.7mm)

Block for chart Aus 200

To accompany Australian Notice to Mariners 691/2010

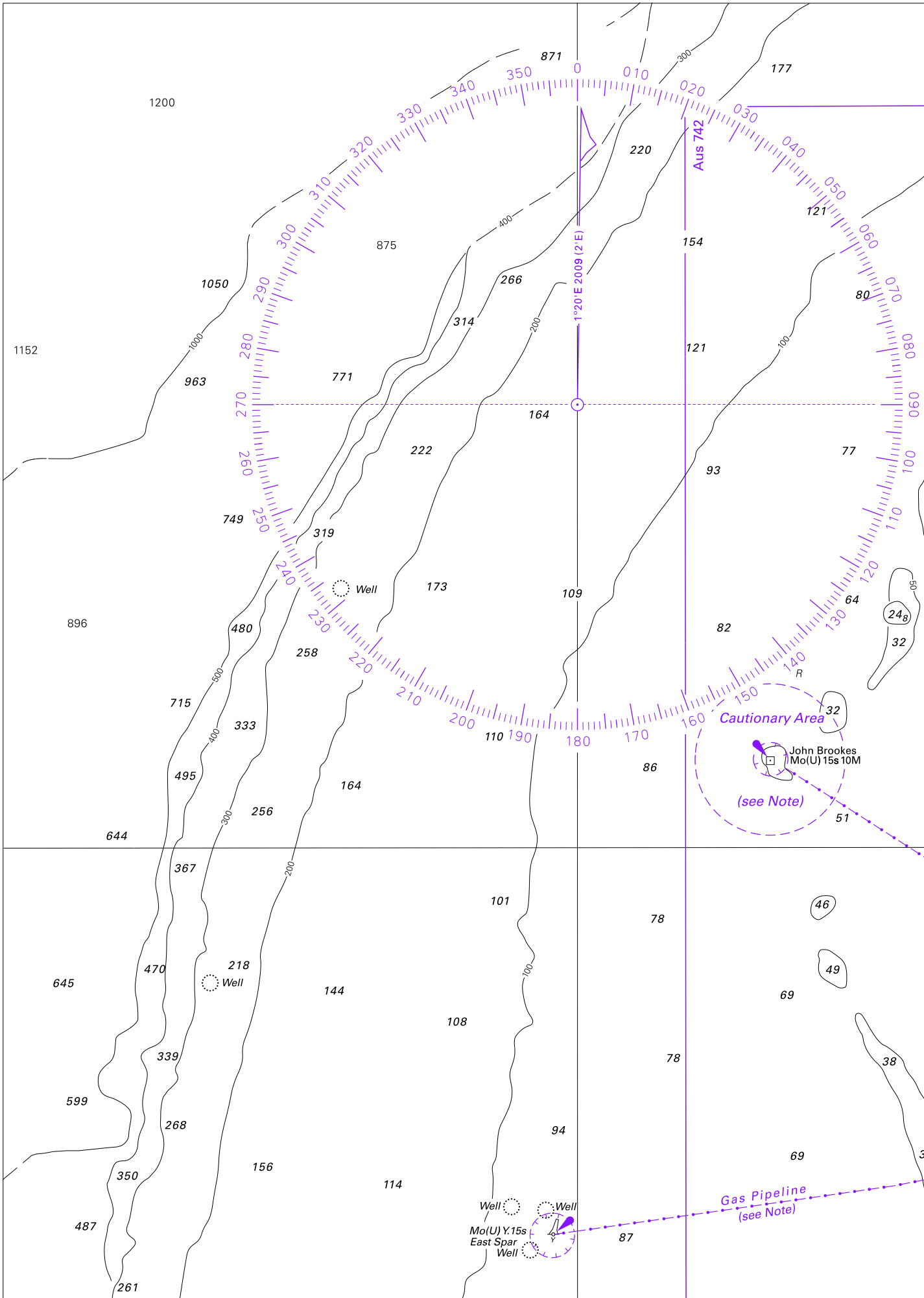


Block for chart Aus 202

© Commonwealth of Australia 2010

(139-0 x 118-5mm)

To accompany Australian Notice to Mariners 697/2010

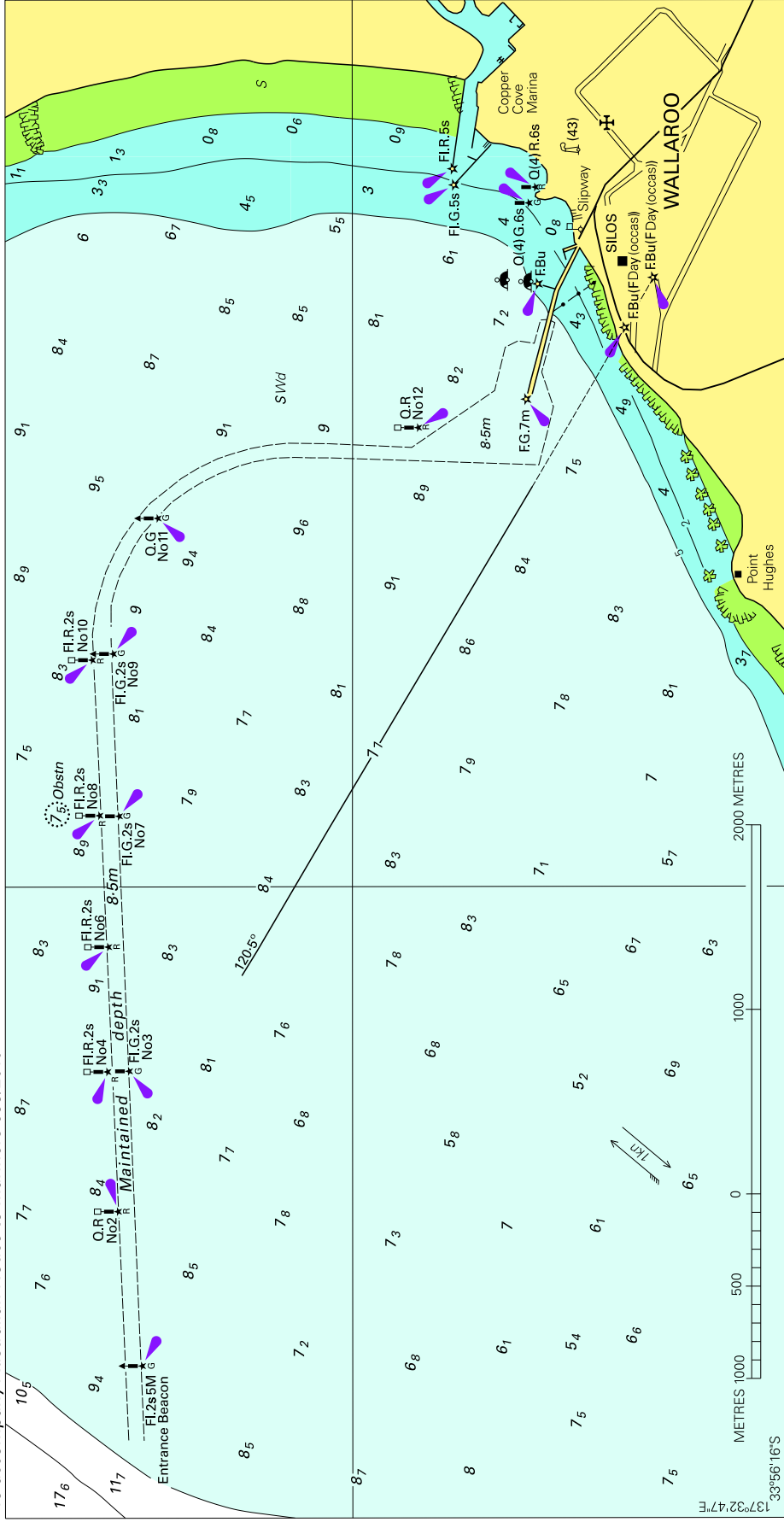


Block for chart Aus 328

© Commonwealth of Australia 2010

(187.9 x 264.8mm)

To accompany Australian Notice to Mariners 699/2010

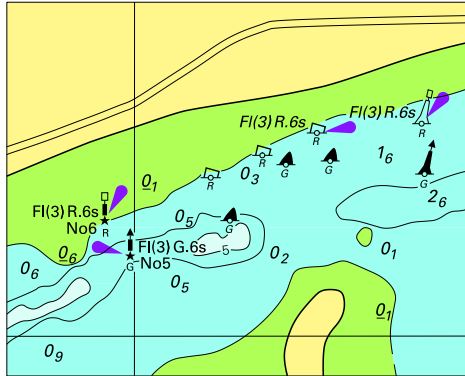


Block for chart Aus 777

© Commonwealth of Australia 2010

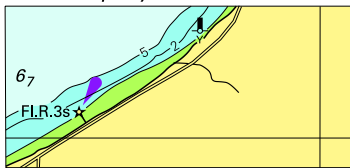
(235.0 x 121.0mm)

To accompany Australian Notice to Mariners 705/2010



© Commonwealth of Australia 2010
Block for chart Aus 153 (61.9 x 49.4mm)

To accompany Australian Notice to Mariners 706/2010



© Commonwealth of Australia 2010
Block for chart Aus 143 (46.3 x 21.3mm)