



4 June 2010

Edition 11

Australian Notices to Mariners are the authority for correcting Australian Charts and Publications

---

# AUSTRALIAN NOTICES TO MARINERS

Notices 578 – 639 

Published fortnightly by the Australian Hydrographic Service

Commodore R. NAIRN RAN  
*Hydrographer of Australia*

---

## SECTIONS.

- I. **Australian Notices to Mariners, including blocks and notes.**
- II. **Hydrographic Reports.**
- III. **Navigational Warnings.**

## SUPPLEMENTS.

- I. **Tracings**
- II. **Cumulative List of Australian Notices to Mariners.**
- III. **Temporary and Preliminary Notices in force.**
- IV. **Amendments to Admiralty List of Lights and Fog Signals (Vol K), Radio Signals (NP 281(2), 282, 283(2), 285, 286(4)) and Sailing Directions (NP 9, 13, 14, 15, 33, 34, 35, 36, 39, 44, 51, 60, 61, 62, 100, 136).**

---

© Commonwealth of Australia 2010

This work is copyright. Apart from any use permitted under the Copyright Act 1968, no part may be reproduced by any process, adapted, communicated or commercially exploited without prior written permission from The Commonwealth represented by the Australian Hydrographic Service.

## **IMPORTANT NOTICE**

This edition of Notices to Mariners includes all significant information affecting AHS products which the AHS has become aware of since the last edition. All reasonable efforts have been made to ensure the accuracy and completeness of the information, including third party information, on which these updates are based. The AHS regards third parties from which it receives information as reliable, however the AHS cannot verify all such information and errors may therefore exist. The AHS does not accept liability for errors in third party information.

---

## **GENERAL INSTRUCTIONS**

The substance of these notices should be inserted on the charts affected.

Bearings are referred to the true compass and are reckoned clockwise from North; those relating to lights are given as seen by an observer from seaward. Positions quoted in permanent notices relate to the horizontal datum for the chart(s). When preliminary or temporary notices affect multiple charts, positions will be provided in relation to only one horizontal datum and that datum will be specified. When the multiple charts do not have a common horizontal datum, mariners will be required to adjust the position(s) for those charts not on the specified datum. The range quoted for a light is its nominal range. Depths are with reference to the chart datum of each chart. Heights are above mean high water springs or mean higher high water, as appropriate.

The capital letter (P) or (T) after the number of any notice denotes a preliminary or temporary notice respectively, which are contained separately at the end of the permanent notices. A star (\*) adjacent to the number of a notice indicates that the notice is based on original information.

---

## **REPORTING OF DANGERS**

Mariners are particularly requested to notify the AUSTRALIAN HYDROGRAPHIC SERVICE, Locked Bag 8801 Wollongong, NSW 2500 (Fax 02-4223 6599, e-mail [Hydro.NTM@defence.gov.au](mailto:Hydro.NTM@defence.gov.au) or, alternatively by filling in and submitting the [Hydrographic Notes](#) forms located on the web site – [www.hydro.gov.au](http://www.hydro.gov.au)), immediately on the discovery of new dangers or suspected dangers to navigation. For changes or defects in aids to navigation notify AusSAR (Fax 02-6230 6868 or email [rccaus@amsa.gov.au](mailto:rccaus@amsa.gov.au)).

---

## **AUTHORISED USE**

Copies of Australian notices are available free of charge from the Australian Hydrographic Service (AHS) website ([www.hydro.gov.au](http://www.hydro.gov.au)) and through the eNotices (email) service ([www.hydro.gov.au/enotices/enotices.htm](http://www.hydro.gov.au/enotices/enotices.htm)).

Individual Notices may be copied for the purpose of inserting Notice substance on official charts and publications. Paper copies may be printed by chart agents and distributed to customers on a cost recovery basis. Participating chart agents are listed on the AHS website as providing a 'Paper Notices to Mariners' service ([www.hydro.gov.au/prodserv/distributors/distributors.htm](http://www.hydro.gov.au/prodserv/distributors/distributors.htm)). Copies of the notices may not be sold for profit without prior written agreement.

## NUMERICAL INDEX OF NOTICES TO MARINERS

**Edition No 11**

Notices	Aus Chart, INT Chart, ENC Cell, AHP
578.....	Temporary and preliminary notice updates for Electronic Navigational Charts
579.....	Aus 126, 150, 151, 152, 745, NP 284
580.....	Amendment to Australian Notice to Mariners No 2
581.....	Aus 423, 806, 807
582.....	Aus 197, 198
583.....	Aus 202
584.....	Aus 197, 489, 809, AX 0809E
585.....	Aus 209
586.....	Aus 811
587.....	Aus 249, 823, AX 0249E, 0823E
588.....	Aus 821
589.....	Aus 387, 388
590.....	Aus 376, 700
591.....	Aus 725
592.....	Aus 414, 4603, 4722, INT 603, 722, AX 4603F, 4722F
593.....	Aus 4708, INT 708, AX 4708F
594.....	Aus 732, 733
595.....	Aus 741, 742
596.....	Aus 57
597.....	Aus 333, 334, 417, 754, 4708, 4709, INT 708, 709 AX 0334E, 0754E, 4708F
598.....	Aus 342, 343, 4727, INT 727, AX 0343E
599.....	Aus 136, 778
600.....	Aus 173, 174, 794, 795
601.....	Aus 144
602.....	Aus 153, 157
603.....	Aus 349, 422, 487, 788, 801
604.....	Aus 181, 182, 357A
605(T).....	Aus 197, 808, AX 0808E, AU434151, 435151
606(T).....	Aus 198, 199, AU5198X9
607(T).....	Aus 207, 208, AU5XX208
608(T).....	Aus 222, AU5XX222
609(T).....	Aus 238, AU5237X8
610(T).....	Aus 242, AU5XX242
611(T).....	Aus 244, 245, AU5244X5
612(T).....	Aus 245, 819, AU424151, 5244X5
613(T).....	Aus 247, 819, 820, AU424151
614(T).....	Aus 248, 260, 261, 367, 820, 822, AX 0260E, 0367E, 0820E, 0822E, 60260, 67248, 67261, AU423150, 5261P1, 5261P2, 5XX248
615(T).....	Aus 249, 250, AX 0249E, AU422149, 5250P2
616(T).....	Aus 249, 250, AX 0249E, AU422149, 5250P1
617(T).....	Aus 249, 250, AX 0249E, AU422149, 5250P1
618(T).....	Aus 249, 250, 823, 824, AX 0249E, 0823E, AU422149, 5250P1
619(T).....	Aus 249, 251, 823, 824, AX 0249E, 0823E, AU422149
620(T).....	Aus 256, 257, AU420146, 5XX257
621(T).....	Aus 270, AU5270P1
622(T).....	Aus 4604, 4620, 4621, INT 604, 620, 621, AX 4604F, 4620F, 4621F, AU130150, 220140
623(T).....	Aus 378, 502, AU309144, 309145, 409145
624(T).....	Aus 6
625(T).....	Aus 308, 309, 310, 311, 312, 313, 314, 315, 316, 317, 318, 321, 322, 442, 721, 725, 4720, 4721, 4722, INT 720, 721, 722, AX 0309F, 0310F, 0311F, 0312F, 0313F, 0314F, 0315F, 0317F, 0321F, 0322F, 4720F, 4721F, 4722F, 72309, AU130120, 310127, 310128, 310130, 311125, 311126, 311127, 311128, 311130, 311131, 311132, 312122, 312123, 312124, 312125, 312126, 312127, 312128, 313121, 313123, 313124, 313125, 313126, 313127, 313128, 314124, 314125, 314127, 314128, 411129, 412129, 413129, 414126
626(T).....	Aus 319, 320, AX 0319F, AU314123
627(T).....	Aus 324
628(P).....	Aus 57, 58, 59, AU5XXX58
629(T).....	Aus 327
630(T).....	Aus 327
631(T).....	Aus 328, 742, AU421115
632(T).....	Aus 64, 743, 744, AU422114, 422115
633(T).....	Aus 109, AU5XX109
634(T).....	Aus 777, AU5777P1
635(T).....	Aus 178, AU5178P7
636(T).....	Aus 169, AU442148
637(T).....	Aus 154, AU5XX154
638(T).....	Aus 154, AU5XX154
639(T).....	Aus 150, AU5150P3

## NUMERICAL INDEX OF CHARTS AFFECTED

## Edition No 11

Aus Chart	Notices	Aus Chart	Notices
Aus 6.....	624(T)	Aus 324 .....	627(T)
Aus 57.....	596, 628(P)	Aus 327 .....	629(T), 630(T)
Aus 58.....	628(P)	Aus 328 .....	631(T)
Aus 59.....	628(P)	Aus 322 .....	625(T)
Aus 64.....	632(T)	Aus 333 .....	597
Aus 109.....	633(T)	Aus 334 .....	597
Aus 126.....	579	Aus 342 .....	598
Aus 136.....	599	Aus 343 .....	598
Aus 144.....	601	Aus 349 .....	603
Aus 150.....	579, 639(T)	Aus 357A.....	604
Aus 151.....	579	Aus 367 .....	614(T)
Aus 152.....	579	Aus 376 .....	590
Aus 153.....	602	Aus 378 .....	623(T)
Aus 154.....	637(T), 638(T)	Aus 387 .....	589
Aus 157.....	602	Aus 388 .....	589
Aus 169.....	636(T)	Aus 414 .....	592
Aus 173.....	600	Aus 417 .....	597
Aus 174.....	600	Aus 422 .....	603
Aus 178.....	635(T)	Aus 423 .....	581
Aus 181.....	604	Aus 442 .....	625(T)
Aus 182.....	604	Aus 487 .....	603
Aus 197.....	582, 584, 605(T)	Aus 489 .....	584
Aus 198.....	582, 606(T)	Aus 502 .....	623(T)
Aus 199.....	606(T)	Aus 700 .....	590
Aus 202.....	583	Aus 721 .....	625(T)
Aus 207.....	607(T)	Aus 725 .....	591, 625(T)
Aus 208.....	607(T)	Aus 732 .....	594
Aus 209.....	585	Aus 733 .....	594
Aus 222.....	608(T)	Aus 741 .....	595
Aus 238.....	609(T)	Aus 742 .....	595, 631(T)
Aus 242.....	610(T)	Aus 743 .....	632(T)
Aus 244.....	611(T)	Aus 744 .....	632(T)
Aus 245.....	611(T), 612(T)	Aus 745 .....	579
Aus 247.....	613(T)	Aus 754 .....	597
Aus 248.....	614(T)	Aus 777 .....	634(T)
Aus 249.....	587, 615(T), 616(T), 617(T), 618(T), 619(T)	Aus 778 .....	599
Aus 250.....	615(T), 616(T), 617(T), 618(T)	Aus 788 .....	603
Aus 251.....	619(T)	Aus 794 .....	600
Aus 256.....	620(T)	Aus 795 .....	600
Aus 257.....	620(T)	Aus 801 .....	603
Aus 260.....	614(T)	Aus 806 .....	581
Aus 261.....	614(T)	Aus 807 .....	581
Aus 270.....	621(T)	Aus 808 .....	605(T)
Aus 308.....	625(T)	Aus 809 .....	584
Aus 309.....	625(T)	Aus 811 .....	586
Aus 310.....	625(T)	Aus 819 .....	612(T), 613(T)
Aus 311.....	625(T)	Aus 820 .....	613(T), 614(T)
Aus 312.....	625(T)	Aus 821 .....	588
Aus 313.....	625(T)	Aus 822 .....	614(T)
Aus 314.....	625(T)	Aus 823 .....	587, 618(T), 619(T)
Aus 315.....	625(T)	Aus 824 .....	618(T), 619(T)
Aus 316.....	625(T)	Aus 4603 .....	592
Aus 317.....	625(T)	Aus 4604 .....	622(T)
Aus 318.....	625(T)	Aus 4620 .....	622(T)
Aus 319.....	626(T)	Aus 4621 .....	622(T)
Aus 320.....	626(T)	Aus 4708 .....	593, 597
Aus 321.....	625(T)	Aus 4709 .....	597
		Aus 4720 .....	625(T)

Aus Chart	Notices	ENC Cell	Notices
Aus 4721 .....	625(T)	AU311125.....	625(T)
Aus 4722 .....	592, 625(T)	AU311126.....	625(T)
Aus 4727 .....	598	AU311127.....	625(T)
AX 0249E .....	587, 615(T), 616(T), 617(T), 618(T), 619(T)	AU311128.....	625(T)
AX 0260E .....	614(T)	AU311130.....	625(T)
AX 0309F .....	625(T)	AU311131.....	625(T)
AX 0310F .....	625(T)	AU311132.....	625(T)
AX 0311F .....	625(T)	AU312122.....	625(T)
AX 0312F .....	625(T)	AU312123.....	625(T)
AX 0313F .....	625(T)	AU312124.....	625(T)
AX 0314F .....	625(T)	AU312125.....	625(T)
AX 0315F .....	625(T)	AU312126.....	625(T)
AX 0317F .....	625(T)	AU312127.....	625(T)
AX 0319F .....	626(T)	AU312128.....	625(T)
AX 0321F .....	625(T)	AU313121.....	625(T)
AX 0322F .....	625(T)	AU313123.....	625(T)
AX 0334E .....	597	AU313124.....	625(T)
AX 0343E .....	598	AU313125.....	625(T)
AX 0367E .....	614(T)	AU313126.....	625(T)
AX 0754E .....	597	AU313127.....	625(T)
AX 0808E .....	605(T)	AU313128.....	625(T)
AX 0809E .....	584	AU314123.....	626(T)
AX 0820E .....	614(T)	AU314124.....	625(T)
AX 0822E .....	614(T)	AU314125.....	625(T)
AX 0823E .....	587, 618(T), 619(T)	AU314127.....	625(T)
AX 4603F .....	592	AU314128.....	625(T)
AX 4604F .....	622(T)	AU409145.....	623(T)
AX 4620F .....	622(T)	AU411129.....	625(T)
AX 4621F .....	622(T)	AU412129.....	625(T)
AX 4708F .....	593, 597	AU413129.....	625(T)
AX 4720F .....	625(T)	AU414126.....	625(T)
AX 4721F .....	625(T)	AU420146.....	620(T)
AX 4722F .....	592, 625(T)	AU421115.....	631(T)
AX 60260 .....	614(T)	AU422114.....	632(T)
AX 67248 .....	614(T)	AU422115.....	632(T)
AX 67261 .....	614(T)	AU422149.....	615(T), 616(T), 617(T), 618(T), 619(T)
AX 72309 .....	625(T)	AU423150.....	614(T)
		AU424151.....	612(T), 613(T)
		AU434151.....	605(P)
		AU435151.....	605(P)
		AU442148.....	636(T)
		AU5150P3.....	639(T)
		AU5178P7.....	635(T)
		AU5198X9.....	606(T)
		AU5237X8.....	609(T)
		AU5244X5.....	611(T), 612(T)
		AU5250P1.....	616(T), 617(T), 618(T)
		AU5250P2.....	615(T)
		AU5261P1.....	614(T)
		AU5261P2.....	614(T)
		AU5270P1.....	621(T)
		AU5777P1.....	634(T)
		AU5XX109.....	633(T)
		AU5XX154.....	637(T), 638(T)
		AU5XX208.....	607(T)
		AU5XX222.....	608(T)
		AU5XX242.....	610(T)
		AU5XX248.....	614(T)
		AU5XX257.....	620(T)
		AU5XXX58.....	628(P)
INT Chart	Notices		
INT 603 .....	592		
INT 604 .....	622(T)		
INT 620 .....	622(T)		
INT 621 .....	622(T)		
INT 708 .....	593, 597		
INT 709 .....	597		
INT 720 .....	625(T)		
INT 721 .....	625(T)		
INT 722 .....	592, 625(T)		
INT 727 .....	598		
ENC Cell	Notices		
AU130120.....	625(T)		
AU130150.....	622(T)		
AU220140.....	622(T)		
AU309144.....	623(T)		
AU309145.....	623(T)		
AU310127.....	625(T)		
AU310128.....	625(T)		
AU310130.....	625(T)		

**578 AUSTRALIA - Product - Temporary and preliminary notice updates for Electronic Navigational Charts**

Australian Hydrographic Service (AA473372)

From July 2010 Australian Hydrographic Service will commence updating Electronic Navigational Charts for temporary and preliminary notices. Initially extant notices will be processed, with a full suite of notices available by January 2011.

Priority for population is:

- a. Depth information for berths
- b. Scientific instruments
- c. Harbour works
- d. Wrecks
- e. Damaged nav aids
- f. Others

Once a notice has been incorporated it will be maintained and aligned to the fortnightly notice to mariners cycle.

Updates will be made available through normal distribution channels, plus an ENC update exchange set aligned to the NTM release cycle will be made available for download at:

<http://www.hydro.gov.au/software/products/products.jsp>

**579 AUSTRALIA - Product**

Australian Hydrographic Service (AA472602)

**New Chart to be published shortly**

<i>Chart</i>	<i>Title</i>	<i>Scale</i>	<i>Expected Publication Date</i>	<i>Expected Stock Availability</i>
Aus 126	Australia - South Coast - South Australia - Plans in South Australia		4 June 2010	12 July 2010
	Plans:			
	Althorpe Islands	1:75 000		
	Backstairs Passage	1:75 000		

**New Edition to be published shortly**

<i>Chart</i>	<i>Title</i>	<i>Scale</i>	<i>Expected Publication Date</i>	<i>Expected Stock Availability</i>
Aus 150	Australia - South Coast - Victoria - Western Port	1:75 000	4 June 2010	12 July 2010
	Plans:			
	Eastern Entrance to Western Port	1:37 500		
	The Narrows	1:10 000		
	Rhyll	1:10 000		
Aus 151	Australia - South Coast - Victoria - Western Port (Entrance and North Arm)	1:37 500	4 June 2010	12 July 2010
Aus 152	Australia - South Coast - Victoria - Plans in Western Port		4 June 2010	12 July 2010
	Plans:			
	Rutherford Inlet	1:15 000		
	Crib Point Oil Terminal Jetty	1:12 000		
	Hastings Bight	1:10 000		
	Hanns Inlet	1:7 500		
Aus 745	Australia - West Coast - Western Australia - North West Cape to Point Maud	1:150 000	4 June 2010	12 July 2010

**Admiralty publication**

<i>NP No</i>	<i>Title</i>	<i>Date</i>	<i>Remarks</i>
NP 284	Admiralty List of Radio Signals, Meteorological Observation Stations. Edition 2010/11.	27/5/2010	The 2009/10 edition is thereby cancelled.

For further details refer to the AHS website at [www.hydro.gov.au](http://www.hydro.gov.au) for new edition and new chart stock arrival information.

When placing orders with a chart agent, mariners should advise whether their order pertains to the current edition or the new edition.

4 June 2010

**580 AUSTRALIA - Product - Amendment to Australian Notice to Mariners No 2**

Australian Hydrographic Service (AA472431, AA472430, AA472438)

Page 14

*Amend* Compleat Angler and Camping World email address to read fishncampingworld@bigpond.com

Page 16

*Insert* new chart agent:

SCOTLAND

**Thomas Gunn Navigation Services Ltd**

Unit 1 Miller Street

Aberdeen AB11 5AN

Telephone

+44 1224 595 045

Email

info@thomasgunn.com

Website

www.thomasgunn.com

N

**581\* AUSTRALIA - NEW SOUTH WALES - Baronda Head to Cape Dromedary - Legends**

Australian Hydrographic Service (AA458870, AA458873)

**Aus 423 [1306/2009]**

<i>Amend</i>	legend to <i>Historic Wk with Protected Zone</i>	36° 19'.0 S	150° 15'.0 E
	legend to <i>Historic Wk with Protected Zone</i>	36° 39'.0 S	150° 10'.0 E

**Aus 806 [1092/2009]**

<i>Amend</i>	legend to <i>Historic Wk with Protected Zone (see Note)</i>	36° 19'.0 S	150° 09'.3 E
	legend to <i>Historic Wk with Protected Zone (see Note)</i>	36° 39'.3 S	150° 06'.0 E

**Aus 807 [691/2009]**

<i>Amend</i>	legend to <i>Historic Wk with Protected Zone (see Note)</i>	36° 19'.0 S	150° 09'.3 E
--------------	---	-------------	--------------

**582\* AUSTRALIA - NEW SOUTH WALES - Tabbigai Gap - Obstructions***Former Notice - 1036(T)/2008 is cancelled*

NSW Maritime (AA472214, AA472215)

**Aus 197 [193/2010]**

<i>Insert</i>	danger circle, with legend <i>Obstn</i> , centred on	34° 01'.97 S	151° 13'.77 E
	danger circle, with legend <i>Obstn</i> , centred on	34° 01'.62 S	151° 13'.95 E

<i>Delete</i>	depth, 24m	34° 01'.5 S	151° 14'.0 E
---------------	------------	-------------	--------------

**Aus 198 [349/2010]**

<i>Insert</i>	danger circle, with legend <i>Obstn</i> , centred on	34° 01'.622 S	151° 13'.947 E
	danger circle, with legend <i>Obstn</i> , centred on	34° 01'.969 S	151° 13'.772 E

**583\* AUSTRALIA - NEW SOUTH WALES - Port Jackson - Bennalong Point - Siren**

Sydney Ports Corporation (AA471380)

**Aus 202 [472/2010]**

<i>Insert</i>	legend, <i>Siren 15s</i> , centred on	33° 51'.36 S	151° 12'.91 E
---------------	---------------------------------------	--------------	---------------

**584\* AUSTRALIA - NEW SOUTH WALES - Bungan Head - Legend**

Australian Hydrographic Service (AA458870, AA458873)

**Aus 197 [582/2010]**Amend legend to *Historic Wk with Protected Zone (see Note)* 33° 40'.3 S 151° 23'.5 E**Aus 489 [537/2010]**Amend legend to *Historic Wk with Protected Zone (see Note)* 33° 40'.0 S 151° 26'.0 E**Aus 809 [406/2010]**Amend legend to *Historic Wk with Protected Zone (see Note)* 33° 40'.0 S 151° 24'.0 E**AX 0809E [406/2010]**Amend legend to *Historic Wk with Protected Zone (see Note)* 33° 40'.0 S 151° 24'.0 E**585\* AUSTRALIA - NEW SOUTH WALES - Port Stephens - Depths**

Australian Hydrographic Service (AA472178, AA472179), Department of Environment, Climate Change and Water NSW (AA472145, AA472146)

**Aus 209 [286/2010]**

Insert	drying height, $0_4m$ , enclosed by contour	32° 42'.450 S	152° 08'.978 E
	depth, $3_9m$ , enclosed by contour	32° 42'.118 S	152° 11'.990 E
	depth, $2_8m$ , and extend contour SE to enclose	32° 42'.114 S	152° 11'.862 E

Delete	contour, with legend Dries 0.3m, centred on	32° 42'.50 S	152° 09'.03 E
	depth, 7m	32° 42'.13 S	152° 11'.91 E

**586\* AUSTRALIA - NEW SOUTH WALES - Crowdy Head to Nambucca Heads - Chart note; legend**

Australian Hydrographic Service (AA276464, AA470437)

**Aus 811 [810/2009]**

Insert	accompanying note	30° 50'.7 S	152° 40'.0 E
	magenta legend, <i>Military Exercise Area (see Note)</i> , centred on	31° 10'.0 S	153° 23'.0 E
	magenta legend, <i>Military Exercise Area (see Note)</i> , centred on	31° 49'.0 S	153° 21'.0 E

**587\* AUSTRALIA - QUEENSLAND - Mackay - Anchorage**

Maritime Safety Queensland (AA471840)

**Aus 249 [NE 12/3/2010]**Insert anchor berth, desig *M1* 21° 06'.0 S 149° 18'.0 E**Aus 823 [NE 12/3/2010]**Insert anchor berth, desig *M1* 21° 06'.0 S 149° 18'.0 E

Delete depth, 14m 21° 06'.1 S 149° 18'.3 E

**AX 0249E [NC 19/6/2009]**Insert anchor berth, desig *M1* 21° 06'.0 S 149° 18'.0 E**AX 0823E [NC 19/6/2009]**Insert anchor berth, desig *M1* 21° 06'.0 S 149° 18'.0 E

Delete depth, 14m 21° 06'.1 S 149° 18'.3 E

**588\* AUSTRALIA - QUEENSLAND - Hydrographers Passage - Depths**

LADS Flight (DHDB 1062150)

**Aus 821 [939/2009]**

Insert	accompanying block	20° 05'.0 S	150° 27'.0 E
--------	--------------------	-------------	--------------

**589\* PAPUA NEW GUINEA - Karkar Island - Depths**

Geoscience Australia (DHDB 1449446)

**Aus 387 [478/2010]**

Insert	accompanying block	4° 45'.0 S	146° 05'.0 E
--------	--------------------	------------	--------------

**Aus 388 [32/2010]**

Insert	accompanying block	4° 40'.0 S	146° 00'.0 E
--------	--------------------	------------	--------------

**590\* AUSTRALIA - TORRES STRAIT - Cook Reef - Depths**

UKHO, Australian Hydrographic Service (AA471420)

**Aus 376 [360/2010]**

Insert	depth, 5 <sub>1</sub> m	10° 24'.73 S	141° 33'.23 E
--------	-------------------------	--------------	---------------

Delete	depth, 7 <sub>6</sub> m	10° 25'.2 S	141° 33'.9 E
--------	-------------------------	-------------	--------------

**Aus 700 [359/2010]**

Insert	accompanying block	10° 23'.0 S	141° 31'.0 E
--------	--------------------	-------------	--------------

**591\* AUSTRALIA - NORTHERN TERRITORY - Port Keats to Victoria River - Contours**

Australian Hydrographic Service (AA470444)

**Aus 725 [826/2009]**

Insert	contour to enclose depth, 2m	14° 05'.72 S	129° 32'.84 E
	contour, between	14° 47'.28 S	129° 22'.95 E
		14° 46'.97 S	129° 22'.40 E
		14° 47'.39 S	129° 22'.65 E

Delete	contour, between	14° 47'.3 S	129° 23'.0 E
		14° 47'.4 S	129° 22'.7 E

**592\* INDONESIA - Sumba - Light**

UKHO (AA470852)

**Aus 414 [481/2010]**

Move	light	10° 14'.9 S	120° 39'.6 E
	to	10° 14'.9 S	120° 37'.3 E

**Aus 4603 (INT 603) [481/2010]**

Move	light	10° 14'.9 S	120° 39'.6 E
	to	10° 14'.9 S	120° 37'.3 E

**Aus 4722 (INT 722) [482/2010]**

Move	light	10° 14'.9 S	120° 39'.6 E
	to	10° 14'.9 S	120° 37'.3 E

**AX 4603F [481/2010]**

Move	light	10° 14'.9 S	120° 39'.6 E
	to	10° 14'.9 S	120° 37'.3 E

**AX 4722F [482/2010]**

Move	light	10° 14'.9 S	130° 39'.6 E
	to	10° 14'.9 S	120° 37'.3 E

**593 INDONESIA - Jawa - Cilacap - Depth**

BA Notice 21/2572/2010 (AA472237)

**Aus 4708 (INT 708) [257/2010]**

Insert	depth, 95m, enclosed by contour	8° 05'.3 S	108° 14'.7 E
--------	---------------------------------	------------	--------------

**AX 4708F [257/2010]**

Insert	depth, 95m, enclosed by contour	8° 05'.3 S	108° 14'.7 E
--------	---------------------------------	------------	--------------

**594\* AUSTRALIA - WESTERN AUSTRALIA - Hall Point to King Sound - Chart note**

Australian Hydrographic Service (AA472146)

**Aus 732 [297/2010]**

Substitute	accompanying note	15° 48'.0 S	124° 31'.0 E
------------	-------------------	-------------	--------------

**Aus 733 [1222/2009]**

Substitute	accompanying note	17° 13'.0 S	123° 16'.0 E
------------	-------------------	-------------	--------------

**595\* AUSTRALIA - WESTERN AUSTRALIA - Rosemary Island to Barrow Island - Pipeline; chart note; legends**  
 Australian Hydrographic Service (AA471906, AA471907, AA472383)

**Aus 741 [417/2010]**

Insert	gas pipeline, with magenta legend <i>Gas (see Note)</i> , between	20° 00'.72 S	116° 25'.88 E
		20° 06'.65 S	116° 29'.35 E
		20° 10'.00 S	116° 31'.73 E
		20° 11'.39 S	116° 32'.91 E
		20° 44'.5 S	116° 42'.5 E
	accompanying note		
Delete	gas pipeline with legend, between	20° 00'.7 S	116° 25'.9 E
		20° 11'.4 S	116° 32'.9 E

**Aus 742 [161/2010]**

Insert	accompanying block	20° 08'.0 S	116° 30'.5 E
	accompanying note	20° 58'.5 S	116° 34'.5 E
	accompanying note	20° 58'.5 S	116° 29'.0 E
	magenta legend, <i>Military Exercise Area (see Note)</i> , centred on	20° 47'.5 S	115° 10'.0 E
	magenta legend, <i>Military Exercise Area (see Note)</i> , centred on	20° 57'.3 S	115° 40'.5 E

**596\* AUSTRALIA - WESTERN AUSTRALIA - Dampier - Mermaid Strait - Moorings**  
 Dampier Port Authority Notice 18/2010 (AA472150)

**Aus 57 [363/2010]**

Insert	dashed line with legend, <i>Moorings (see Note)</i> , between	20° 39'.48 S	116° 33'.69 E
		20° 39'.48 S	116° 34'.92 E
		20° 40'.35 S	116° 34'.92 E
		20° 40'.35 S	116° 33'.69 E
		20° 39'.48 S	116° 33'.69 E

**597\* AUSTRALIA - WESTERN AUSTRALIA - Ledge Point - Wreck southwestwards**

Australian Hydrographic Service (AA470431), University of Western Australia (AA470427)

**Aus 333 [484/2010]**

Insert	depth, 26m, enclosed by danger circle with legend, <i>Wk</i>	31° 09'.89 S	115° 11'.81 E
Delete	wreck	31° 10'.1 S	115° 11'.6 E

**Aus 334 [210/2010]**

Insert	depth, 26m, enclosed by danger circle with legend, <i>Wk</i>	31° 09'.89 S	115° 11'.81 E
Delete	wreck	31° 10'.1 S	115° 11'.6 E

**Aus 417 [488/2009]**

Substitute	depth, 26m, enclosed by danger circle with legend, <i>Wk</i> for wreck	31° 10'.1 S	115° 11'.6 E
Delete	30m contour	31° 11'.0 S	115° 11'.5 E

**Aus 754 [210/2010]**

Insert	depth, 26m, enclosed by danger circle with legend, <i>Wk</i>	31° 09'.89 S	115° 11'.81 E
Delete	depth, 38m wreck	31° 09'.7 S 31° 10'.1 S	115° 11'.6 E 115° 11'.6 E

**Aus 4708 (INT 708) [593/2010]**

Substitute	depth, 26m, enclosed by danger circle with legend, <i>Wk</i> for wreck	31° 10'.1 S	115° 11'.6 E
------------	---	-------------	--------------

**Aus 4709 (INT 709) [368/2010]**

Substitute	depth, 26m, enclosed by danger circle with legend, <i>Wk</i> for wreck	31° 10'.1 S	115° 11'.6 E
------------	---	-------------	--------------

**AX 0334E [210/2010]**

Insert	depth, 26m, enclosed by danger circle with legend, <i>Wk</i>	31° 09'.89 S	115° 11'.81 E
Delete	wreck	31° 10'.1 S	115° 11'.6 E

**AX 0754E [210/2010]**

Insert	depth, 26m, enclosed by danger circle with legend, <i>Wk</i>	31° 09'.89 S	115° 11'.81 E
Delete	depth, 38m wreck	31° 09'.7 S 31° 10'.1 S	115° 11'.6 E 115° 11'.6 E

**AX 4708F [593/2010]**

Substitute	depth, 26m, enclosed by danger circle with legend, <i>Wk</i> , for wreck	31° 10'.1 S	115° 11'.6 E
------------	---	-------------	--------------

**598\* AUSTRALIA - SOUTH AUSTRALIA - Neptune Islands - Depths westwards**

Geoscience Australia (DHDB 1316928)

**Aus 342 [488/2010]**

Delete depth, 164m, and enclosing contour with legend 34° 58'.0 S 133° 44'.5 E

**Aus 343 [426/2010]**

Delete	depth, 146m, and enclosing contour with legend	35° 03'.2 S	134° 01'.3 E
	depth, 143m, and enclosing contour with legend	35° 04'.2 S	134° 07'.5 E
	depth, 196m, and enclosing contour with legend	35° 05'.5 S	134° 06'.7 E
	depth, 157m, and enclosing contour with legend	35° 06'.7 S	134° 10'.7 E
	depth, 362m, and enclosing contour with legend	35° 11'.6 S	134° 20'.0 E
	depth, 143m, and enclosing contour with legend	35° 11'.6 S	134° 23'.9 E
	depth, 150m, and enclosing contour with legend	35° 13'.6 S	134° 27'.3 E
	depth, 210m, and enclosing contour with legend	35° 18'.2 S	134° 25'.5 E
	depth, 375m, and enclosing contour with legend	35° 23'.2 S	134° 38'.1 E
	depth, 91m, and enclosing contour with legend	35° 25'.0 S	134° 40'.0 E
	depth, 205m, and enclosing contour with legend	35° 32'.2 S	134° 54'.0 E
	depth, 203m, and enclosing contour with legend	35° 32'.7 S	135° 00'.0 E
	depth, 232m, and enclosing contour with legend	35° 39'.0 S	135° 13'.5 E

**Aus 4727 (INT 727) [304/2010]**

Insert accompanying block 35° 55'.0 S 135° 05'.0 E

**AX 0343E [426/2010]**

Delete	depth, 146m, and enclosing contour with legend	35° 03'.2 S	134° 01'.3 E
	depth, 143m, and enclosing contour with legend	35° 04'.2 S	134° 07'.5 E
	depth, 196m, and enclosing contour with legend	35° 05'.5 S	134° 06'.7 E
	depth, 157m, and enclosing contour with legend	35° 06'.7 S	134° 10'.7 E
	depth, 362m, and enclosing contour with legend	35° 11'.6 S	134° 20'.0 E
	depth, 143m, and enclosing contour with legend	35° 11'.6 S	134° 23'.9 E
	depth, 150m, and enclosing contour with legend	35° 13'.6 S	134° 27'.3 E
	depth, 210m, and enclosing contour with legend	35° 18'.2 S	134° 25'.5 E
	depth, 375m, and enclosing contour with legend	35° 23'.2 S	134° 38'.1 E
	depth, 91m, and enclosing contour with legend	35° 25'.0 S	134° 40'.0 E
	depth, 205m, and enclosing contour with legend	35° 32'.2 S	134° 54'.0 E
	depth, 203m, and enclosing contour with legend	35° 32'.7 S	135° 00'.0 E
	depth, 232m, and enclosing contour with legend	35° 39'.0 S	135° 13'.5 E

**599\* AUSTRALIA - SOUTH AUSTRALIA - Port Whyalla to Port Pirie - Legends; light beacon established**

Department of Transport, Energy and Infrastructure SA Notice 24/2010 (AA471218, AA471252), HydroSurvey Australia (AA471632)

**Aus 136 [428/2010]**

Insert	east cardinal light beacon, Q(3)10s, with topmark	33° 02'.1 S	137° 44'.8 E
Amend	legend to <i>Whyalla Harbor Limit</i>	33° 04'.8 S	137° 38'.9 E
	legend to <i>Port Bonython Harbor Limit</i>	33° 03'.8 S	137° 43'.0 E
	legend to <i>Port Pirie Harbor Limit</i>	33° 06'.6 S	137° 51'.7 E
Delete	legend, PORT WHYALLA, centred on	33° 01'.5 S	137° 36'.8 E

**Aus 136 (plan, Whyalla)**

Insert	legend, <i>Whyalla Harbor Limit</i> , centred on	33° 00'.56 S	137° 37'.21 E
	legend, <i>Port Bonython Harbor Limit</i> , centred on	33° 00'.50 S	137° 37'.26 E
Delete	legend, Port Limit	33° 00'.2 S	137° 36'.9 E

**Aus 136 (plan, Port Bonython)**

Amend	legend to <i>Port Bonython Harbor Limit</i>	33° 00'.40 S	137° 47'.45 E
-------	---	--------------	---------------

**Aus 778 [428/2010]**

Insert	east cardinal light beacon, Q(3)10s, with topmark	33° 02'.1 S	137° 44'.8 E
Amend	legend to <i>Whyalla Harbor Limit</i>	33° 05'.0 S	137° 39'.0 E
	legend to <i>Port Bonython Harbor Limit</i>	33° 03'.9 S	137° 43'.4 E
	legend to <i>Port Pirie Harbor Limit</i>	33° 05'.9 S	137° 50'.7 E
Delete	depth, 8 <sub>6</sub> m	33° 02'.0 S	137° 44'.6 E
	depth, 11 <sub>2</sub> m	33° 02'.2 S	137° 44'.7 E
	legend, Port Whyalla, centred on	33° 01'.8 S	137° 36'.6 E

**600\* AUSTRALIA - TASMANIA - Actaeon Island - Light altered**

Marine and Safety Tasmania Notice M59/2010 (AA471659, AA472404)

**Aus 173 [494/2010]**

Amend	light to VQ(3)5s 21m 7M	43° 31'.61 S	146° 59'.87 E
-------	-------------------------	--------------	---------------

**Aus 174 (plan, Recherche Bay) [494/2010]**

Amend	light to VQ(3)5s 21m 7M	43° 31'.61 S	146° 59'.87 E
-------	-------------------------	--------------	---------------

**Aus 794 [494/2010]**

Amend	light to VQ(3)5s 7M	43° 31'.6 S	146° 59'.9 E
-------	---------------------	-------------	--------------

**Aus 795 [494/2010]**

Amend	light to VQ(3)5s 7M	43° 31'.6 S	146° 59'.9 E
-------	---------------------	-------------	--------------

**601\* AUSTRALIA - VICTORIA - Port Phillip - The Rip - Depth**

Australian Hydrographic Service (AA472302)

**Aus 144 [432/2010]**

Substitute	depth, 15 <sub>1</sub> m, for depth, 15m	38° 19'.12 S	144° 38'.62 E
------------	--	--------------	---------------

**602\* AUSTRALIA - VICTORIA - Port Phillip - Corio Bay - Light buoys withdrawn**

Victorian Notice 48/2010 (AA471076)

**Aus 153 [497/2010]**

Delete	light buoy	38° 05'.56 S	144° 24'.20 E
	light buoy	38° 07'.62 S	144° 24'.18 E

**Aus 157 [497/2010]**

Delete	light buoy	38° 05'.56 S	144° 24'.20 E
	light buoy	38° 07'.62 S	144° 24'.18 E

**603\* AUSTRALIA - VICTORIA - Cape Schanck - Legend westwards**

Australian Hydrographic Service (AA458873)

**Aus 349 [311/2010]**

Amend	legend to <i>Historic Wk with Protected Zone (see Note)</i>	38° 29'.3 S	144° 43'.0 E
-------	---	-------------	--------------

**Aus 422 [553/2010]**

Amend	legend to <i>Historic Wk with Protected Zone</i>	38° 29'.0 S	144° 40'.0 E
-------	--	-------------	--------------

**Aus 487 [553/2010]**

Amend	legend to <i>Historic Wk with Protected Zone</i>	38° 29'.0 S	144° 42'.0 E
-------	--	-------------	--------------

**Aus 788 [311/2010]**

Amend	legend to <i>Historic Wk with Protected Zone (see Note)</i>	38° 29'.2 S	144° 46'.0 E
-------	---	-------------	--------------

**Aus 801 [47/2010]**

Amend	legend to <i>Historic Wk with Protected Zone (see Note)</i>	38° 29'.2 S	144° 46'.0 E
-------	---	-------------	--------------

**604\* AUSTRALIA - VICTORIA - Clonmel Island - Legend**

Australian Hydrographic Service (AA458870, AA458873)

**Aus 181 [1279/2009]**

Amend	legend to <i>Historic Wk with Protected Zone (see Note)</i>	38° 44'.6 S	146° 41'.0 E
-------	---	-------------	--------------

**Aus 182 (plan, Approaches to Port Albert) [1279/2009]**

Amend	legend to <i>Historic Wk with Protected Zone (see Note)</i>	38° 44'.6 S	146° 40'.7 E
-------	---	-------------	--------------

**Aus 357A [1436/2009]**

Amend	legend to <i>Historic Wk with Protected Zone (see Note)</i>	38° 44'.7 S	146° 42'.0 E
-------	---	-------------	--------------

**605(T)/2010 AUSTRALIA - NEW SOUTH WALES - Cape Solander - Pilot boarding place trial eastwards completed**

*Former Notice* - 1234(P)/2009 is cancelled

Sydney Ports Corporation Notice 2/2010 (AA473157)

Cancel this notice on receipt.

**Chart formerly affected - Aus 197 - Aus 808 - AX 0808E - AU434151 - AU435151**

**606(T)/2010 AUSTRALIA - NEW SOUTH WALES - Botany Bay - Kurnell to La Perouse Point - Cable laying operations**

*Former Notice* - 371(T)/2010 is cancelled

*Date* - Until 31 October 2010

Sydney Ports Corporation Notice 3/2010 (AA473158)

Vessels *Steel Hauler*, *Edi*, *Bega* and support vessels *Southern Cross* and *Ultimate One* are laying power cables between the following positions;

34° 00'.4 S 151° 12'.9 E

34° 00'.3 S 151° 12'.9 E

33° 59'.4 S 151° 13'.9 E.

The barge *Steel Hauler* has deployed anchors marked by special light buoys which mark the boundary of an exclusion zone around the vessel.

The shipping channel may be closed between 2300 and 0400 and Sydney Harbour Control will advise on VHF Ch 13.

Mariners are advised to navigate with caution in the area.

**Chart temporarily affected - Aus 198 - Aus 199 - AU5198X9**

**607(T)/2010 AUSTRALIA - NEW SOUTH WALES - Newcastle - Depth information**

Former Notice - 555(T)/2010 is cancelled  
Newcastle Port Corporation (AA472553)

Available depths as at 27 May 2010:

<i>Berth</i>	<i>Metres</i>
Western Basin 3	11.4
Western Basin 4	11.4
Eastern Basin 1	11.2
Eastern Basin 2 North of Ch 450	11.6
Eastern Basin 2 South of Ch 450	11.0
Dockyard 2 (Dredge)	4.0
Channel Berth	8.3
Dyke 1	12.8
Dyke 2	12.8
* Dyke 4	16.5
* Dyke 5	16.5
Dyke 6	6.3
* Mayfield 4 Ch 27 to 266	12.8
BHP Wharf 6 to Ch 1050	7.8
Kooragang 2	11.6
Kooragang 2 North Dolphin	11.0
Kooragang 2 South Dolphin	11.0
Kooragang 3	13.0
Kooragang 4	16.5
Kooragang 5	16.1
* Kooragang 6	16.5
Kooragang 8	15.3
Kooragang 9	TBA
Kooragang Ship Receival KSR	8.0
Throsby 1	9.3
Carrington wharf	To be sounded as and when required
Former Tug berth 4	6.5
Elgo wharf	To be sounded as and when required
<i>Channels</i>	
Entrance Approach	17.7
Entrance Channel (18.0m)	18.0
Entrance Channel (17.4m)	17.4
Entrance Channel (16.8m)	16.8
Entrance Channel (16.2m)	16.1
Entrance Channel to Horseshoe	15.2
Horseshoe	15.2
Steelworks Channel to Swinging Basin	15.0
Swinging Basin	15.0
Swinging Basin to Mayfield 4	12.8
* Hunter River South Arm (Kooragang 6 to Kooragang 8)	15.0
Basin Cutting	12.8
Basin Area to Eastern & Western Basin Berths	12.3
Basin Area to 1 Throsby	10.0
Stockton Crossing	3.6

\* Indicates new or revised entry.

**Chart temporarily affected - Aus 207 - Aus 208 - AU5XX208**

**608(T)/2010 AUSTRALIA - NEW SOUTH WALES - Clarence River - Drilling operations**

Date - Until 21 June 2010

NSW Maritime Notice NC1024/2010 (AA470351)

Barge *Sea Lift 3* is conducting drilling operations in the lower Clarence River from Hickey Island (29° 25'.74 S 153° 21'.33 E) in a northerly direction to Iluka (29° 25'.29 S 153° 21'.41 E) and the southern side of Hickey Island (29° 25'.95 S 153° 21'.23 E) in a southerly direction to the southern shore of Yamba Bay (29° 26'.18 S 153° 21'.19 E).

Mariners are advised to navigate with caution in this area.

**Chart temporarily affected - Aus 222 - AU5XX222****609(T)/2010 AUSTRALIA - QUEENSLAND - Brisbane River - Quarries Reach to Parker Island Reach - Harbour works**

Former Notice - 437(T)/2010 is cancelled

Date - Until 30 November 2010

Maritime Safety Queensland Notice 190(T)/2007, 296(T)/2007, 212(T)/2010, 349(T)/2010, 460(T)/2010, 467(T)/2010 (AA237697, AA243715, AA366844, AA243714, AA459560, AA466499, AA472561, AA472835)

Harbour works are in progress for the Gateway Bridge development.

A silt curtain and temporary causeway exist from the northern bank of the river to position 27° 26'.62 S 153° 06'.01 E and a silt curtain marked by flashing lights exists from the northern bank of the river to position 27° 26'.65 S 153° 06'.12 E. The offshore end is marked by special light buoy. Another two silt curtains exist from the southern bank of the river to positions 27° 26'.77 S 153° 06'.03 E and 27° 26'.72 S 153° 06'.15 E. The offshore ends are marked by special light buoys.

A 6 knot no wash speed limit zone marked by special light buoys exists between:

27° 26'.67 S 153° 05'.74 E

27° 26'.45 S 153° 06'.39 E

27° 26'.60 S 153° 06'.50 E

27° 26'.66 S 153° 06'.50 E

27° 26'.89 S 153° 05'.87 E

27° 26'.67 S 153° 05'.74 E

Special light buoys, *Fl. Y.2.5s*, exist in positions:

27° 26'.74 S 153° 05'.79 E

27° 26'.52 S 153° 06'.44 E

27° 26'.60 S 153° 06'.50 E

27° 26'.83 S 153° 05'.83 E

Barge *Westpark Dredger* and MT *Susan* are onsite for the construction of a rock wall embankment in the vicinity of position 27° 26'.78 S 153° 06'.09 E. The vessels will display appropriate lights and shapes and will monitor VHF Ch 14.

During construction a 3 metre reduction in vertical clearance will exist, with 54 metres in the centre and 50 metres at the edge of the cutting.

Mariners with an air draft of over 45 metres are required to obtain written permission from the Manager Vessel Traffic Management at Brisbane Port Control on 07 33051700 prior to proceeding under the Gateway Bridges.

Mariners are advised to navigate with caution in the area.

**Chart temporarily affected - Aus 238 - AU5237X8**

**610(T)/2010 AUSTRALIA - QUEENSLAND - Bundaberg - Long Reach - Cable ferry operations**

*Date* - Until 15 December 2010

Maritime Safety Queensland Notice 446(T)/2010 (AA472442)

A cable ferry is operating in position 24° 47'.77 S 152° 22'.95 E. The ferry will exhibit the lights and shapes, including warning signals, as described by the International Regulations for the Prevention of Collisions at Sea, which also include:

While the ferry is underway, it will exhibit the lights and shapes for a vessel restricted in its ability to manoeuvre.

While the ferry is alongside either landing, it will exhibit the lights and shapes for an anchored vessel. During this mode river traffic may proceed past the ferry crossing.

By night the ferry will exhibit four white lights, positioned to illuminate the towing cables.

The ferry may operate over a 24 hour period and can be contacted on VHF Ch 16.

When approaching the crossing, vessels should sound a warning signal of one prolonged blast.

Mariners are advised to navigate with caution in the area.

**Chart temporarily affected - Aus 242 - AU5XX242****611(T)/2010 AUSTRALIA - QUEENSLAND - Gladstone - Auckland Channel - Light buoy re-established**

*Former Notice* - 172(T)/2010 is cancelled

Maritime Safety Queensland Notice 465(T)/2010 (AA472642)

Cancel this notice on receipt.

**Chart formerly affected - Aus 244 - Aus 245 - AU5244X5****612(T)/2010 AUSTRALIA - QUEENSLAND - Gladstone - North Passage Island - Scientific instruments**

*Former Notice* - 1188(T)/2009 is cancelled

*Date* - Until 31 December 2010

Maritime Safety Queensland Notice 463(T)/2010 (AA472644)

Subsurface scientific instruments exist in positions 23° 46'.02 S 151° 10'.44 E and 23° 45'.70 S 151° 10'.72 E.

Mariners are advised to navigate with caution in the area.

**Chart temporarily affected - Aus 245 - Aus 819 - AU424151 - AU5244X5****613(T)/2010 AUSTRALIA - QUEENSLAND - Lisa Jane Shoals - Scientific instrument**

*Former Notice* - 132(T)/2010 is cancelled

Maritime Safety Queensland Notice 454(T)/2010 (AA472633)

A special light buoy, *F(5)Y.20s*, exists in position 23° 18'.36 S 151° 04'.29 E.

Mariners are not to use this buoy as a mooring.

**Chart temporarily affected - Aus 247 - Aus 819 - Aus 820 - AU424151**

**614(T)/2010 AUSTRALIA - QUEENSLAND - Shoalwater Bay - Live firing***Date* - Until 12 June 2010

Maritime Safety Queensland Notice 456(T)/2010 (AA472391)

Live firing activities will be conducted in the Shoalwater Bay training area during the period 7 to 11 June 2010.

A marine danger area extends to all internal waters bounded by the following positions:

22° 21'.20 S 150° 10'.52 E  
 22° 20'.35 S 150° 12'.00 E  
 22° 16'.94 S 150° 12'.07 E  
 22° 14'.76 S 150° 20'.31 E  
 22° 09'.00 S 150° 25'.00 E  
 22° 09'.00 S 150° 37'.00 E  
 22° 15'.28 S 150° 38'.10 E  
 22° 19'.92 S 150° 45'.05 E  
 22° 29'.13 S 150° 49'.71 E  
 22° 31'.09 S 150° 43'.53 E  
 22° 40'.00 S 150° 38'.00 E.

All waters, creeks, beaches and other areas within the declared marine danger area are not available for access.

There will be a safe anchorage available at South Arms of Port Clinton.

Mariners are advised to keep clear of this area throughout the above times.

**Chart temporarily affected - Aus 248 - Aus 260 - Aus 261 - Aus 367 - Aus 820 - Aus 822 - AX 0260E - AX 0367E - AX 0820E - AX 0822E - AX 60260 - AX 67248 - AX 67261 - AU423150 - AU5261P1 - AU5261P2 - AU5XX248**

**615(T)/2010 AUSTRALIA - QUEENSLAND - Hay Point - Dredging operations***Date* - Until 30 September 2010

Maritime Safety Queensland Notice 455(T)/2010 (AA472440)

Dredge *Hippopotus*, barges *Murray River* and *Yarra River*, MT *Black Panther* and support vessels are conducting dredging operations in the area to the south of DBCT berth No1 (21° 15'.00 S 149° 18'.36 E).

The tug will be towing the barges to the spoil ground (21° 11'.53 S 149° 18'.50 E).

All vessel will monitors VHF Ch 14 and 16 and display appropriate lights and signals.

Mariners are advised to navigate with caution in the area.

**Chart temporarily affected - Aus 249 - Aus 250 - AX 0249E - AU422149 - AU5250P2**

**616(T)/2010 AUSTRALIA - QUEENSLAND - Dangerous Reef - Light buoy re-established***Former Notice* - 564(T)/2010 is cancelled

Maritime Safety Queensland Notice 476/2010 (AA473286)

Cancel this notice on receipt.

**Chart formerly affected - Aus 249 - Aus 250 - AX 0249E - AU422149 - AU5250P1**

**617(T)/2010 AUSTRALIA - QUEENSLAND - Slade Island - Light buoy re-established southeastwards***Former Notice* - 320(T)/2010 is cancelled

Maritime Safety Queensland Notice 475/2010 (AA473285)

Cancel this notice on receipt.

**Chart formerly affected - Aus 249 - Aus 250 - AX 0249E - AU422149 - AU5250P1**

**618(T)/2010 AUSTRALIA - QUEENSLAND - Mackay - Slade Rock - Light buoy re-established***Former Notice* - 443(T)/2010 is cancelled

Maritime Safety Queensland Notice 474/2010 (AA473284)

Cancel this notice on receipt.

**Chart formerly affected - Aus 249 - Aus 250 - Aus 823 - Aus 824 - AX 0249E - AX 0823E - AU422149 - AU5250P1****619(T)/2010 AUSTRALIA - QUEENSLAND - Shoal Point - Light buoy re-established***Former Notice* - 321(T)/2010 is cancelled

Maritime Safety Queensland Notice 473/2010 (AA473289)

Cancel this notice on receipt.

**Chart formerly affected - Aus 249 - Aus 251 - Aus 823 - Aus 824 - AX 0249E - AX 0823E - AU422149****620(T)/2010 AUSTRALIA - QUEENSLAND - Townsville - Ross River - Drilling operations completed***Former Notice* - 452(T)/2010 is cancelled

Maritime Safety Queensland Notice 478/2010 (AA473290)

Cancel this notice on receipt.

**Chart formerly affected - Aus 256 - Aus 257 - AU420146 - AU5XX257****621(T)/2010 AUSTRALIA - QUEENSLAND - Port Douglas - Depth information***Former Notice* - 117(T)/2008 is cancelled

Maritime Safety Queensland Notice 459(T)/2010 (AA472386)

Available depths as at 19 March 2010:

	<i>Metres</i>
* Outer Channel	2.3
* Inner Channel	2.1
* Boat ramp to marina	1.9
* Shoreline to mooring piles from southern side of boat ramp to marina	0.0
* Indicates revised entry.	

**Chart temporarily affected - Aus 270 - AU5270P1****622(T)/2010 AUSTRALIA - CORAL SEA - Mellish Reef - Light buoy off station northwestwards***Former Notice* - 566(T)/2010 is cancelled

Australian Bureau of Meteorology (AA473069)

The light buoy, *Fl.Y.3s* (15° 48'.0 S 158° 31'.0 E), is drifting and currently in position 13° 22'.74 S 148° 33'.86 E (1 June 2010).**Chart temporarily affected - Aus 4620 (INT 620) - Aus 4621 (INT 621) - Aus 4604 (INT 604) - AX 4604F - AX 4620F - AX 4621F - AU130150 - AU220140****623(T)/2010 PAPUA NEW GUINEA - Gulf of Papua - Seismic survey completed***Former Notice* - 390(T)/2010 is cancelled

National Maritime Safety Authority PNG Notice 16/2010 (AA463877)

Cancel this notice on receipt.

**Chart formerly affected - Aus 378 - Aus 502 - AU309144 - AU309145 - AU409145**

**624(T)/2010 AUSTRALIA - QUEENSLAND - Karumba - Depth information***Former Notice - 228(T)/2010 is cancelled*

Maritime Safety Queensland Notice 458(T)/2010 (AA472390)

Available depths as at 26 May 2010:

<i>Berth</i>	<i>Metres</i>
* Entrance Channel	2.8
Mobil/Trinity Wharf	6.3
Raptis Wharf	5.3
Ruby Marine Wharf	5.3
Gulf Freight Services Wharf	6.2
Karumba Cold Stores Wharf	6.2
Seaswift/Shell Wharf	6.2
Karumba Livestock Loading Wharf	5.4
Gulf Freight Services Ramp/Wharf	4.6
Pasminco Export Wharf	4.2

\* Indicates revised entry.

**Chart temporarily affected - Aus 6****625(T)/2010 AUSTRALIA - TIMOR SEA - Seismic survey completed***Former Notice - 69(T)/2010 is cancelled*

Petroleum Geo-Services (AA448211)

Cancel this notice on receipt.

**Chart formerly affected - Aus 308 - Aus 309 - Aus 310 - Aus 311 - Aus 312 - Aus 313 - Aus 314 - Aus 315 - Aus 316 - Aus 317 - Aus 318 - Aus 321 - Aus 322 - Aus 442 - Aus 721 - Aus 725 - Aus 4720 (INT 720) - Aus 4721 (INT 721) - Aus 4722 (INT 722) - AX 0309F - AX 0310F - AX 0311F - AX 0312F - AX 0313F - AX 0314F - AX 0315F - AX 0317F - AX 0321F - AX 0322F - AX 4720F - AX 4721F - AX 4722F - AX 72309 - AU130120 - AU310127 - AU310128 - AU310130 - AU311125 - AU311126 - AU311127 - AU311128 - AU311130 - AU311131 - AU311132 - AU312122 - AU312123 - AU312124 - AU312125 - AU312126 - AU312127 - AU312128 - AU313121 - AU313123 - AU313124 - AU313125 - AU313126 - AU313127 - AU313128 - AU314124 - AU314125 - AU314127 - AU314128 - AU411129 - AU412129 - AU413129 - AU414126**

**626(T)/2010 AUSTRALIA - WESTERN AUSTRALIA - Browse Island - Scientific instruments northwestwards***Former Notice - 179(T)/2010 is cancelled*

MetOcean Engineers (AA472686)

Scientific instruments exist as follows:

<i>Position</i>	<i>Remarks</i>
13° 52'.71 S 123° 14'.17 E	lit buoy, <i>Fl(5)Y.20s</i>
13° 52'.49 S 123° 13'.78 E	subsurface
13° 52'.21 S 123° 14'.05 E	lit buoy, <i>Fl(5)Y.20s</i>

**Chart temporarily affected - Aus 319 - Aus 320 - AX 0319F - AU314123****627(T)/2010 AUSTRALIA - WESTERN AUSTRALIA - James Price Point - Scientific instrument***Former Notice - 180(T)/2010 is cancelled**Date - Until 30 June 2010*

MetOcean Engineers (AA473263)

A special light buoy, *Fl(5)Y.20s*, exists in position 17° 30'.81 S 121° 53'.88 E (WGS84 datum).**Chart temporarily affected - Aus 324**

**628(P)/2010 AUSTRALIA - WESTERN AUSTRALIA - Dampier - Nav aids to be established**

Former Notice - 1248(P)/2009 is cancelled

Date - Until 30 June 2010

Dampier Port Authority Notices 28/2009, 19/2010 (AA433535, AA435183, AA472849, AA472850, AA472853, AA472906)

Light beacons will be established in the as follows:

	<i>Positions</i>	<i>Remarks</i>
HP1	20° 28'.57 S 116° 43'.81E	starboard lateral light beacon, <i>Fl.G.3s</i> , with topmark
HP3	20° 32'.00 S 116° 42'.84E	starboard lateral light beacon, <i>Fl.G.3s</i> , with topmark
HP5	20° 32'.91 S 116° 42'.65 E	light beacon, <i>Fl.G.3s &amp; Oc.3s</i> , with topmark apex up
HP6	20° 32'.68 S 116° 42'.87E	port lateral light beacon, <i>Fl.R.3s</i> , with topmark
HP7	20° 33'.49 S 116° 42'.78 E	light beacon, <i>Fl.G.3s &amp; Oc.3s</i> , with topmark apex up
HP8	20° 33'.16 S 116° 42'.96E	port lateral light beacon, <i>Fl.R.3s</i> , with topmark
HP9	20° 33'.89 S 116° 43'.04E	starboard lateral light beacon, <i>Fl.G.3s</i> , with topmark
HP10	20° 33'.81 S 116° 43'.15E	port lateral light beacon, <i>Fl.R.3s</i> , with topmark
HP11	20° 34'.45 S 116° 43'.52E	starboard lateral light beacon, <i>Fl.G.3s</i> , with topmark
HP12	20° 34'.37 S 116° 43'.63E	port lateral light beacon, <i>Fl.R.3s</i> , with topmark
HP13	20° 35'.15 S 116° 44'.13E	starboard lateral light beacon, <i>Fl.G.3s</i> , with topmark
HP14	20° 35'.07 S 116° 44'.24E	port lateral light beacon, <i>Fl.R.3s</i> , with topmark
HP15	20° 35'.93 S 116° 44'.80E	starboard lateral light beacon, <i>Fl.G.3s</i> , with topmark
HP16	20° 35'.65 S 116° 44'.74E	port lateral light beacon, <i>Fl.R.3s</i> , with topmark
HP17	20° 36'.13 S 116° 44'.84E	special light buoy, <i>Fl.Y.3s</i> , without topmark
HP19	20° 36'.27 S 116° 44'.90E	special light buoy, <i>Fl.Y.3s</i> , without topmark
HP20	20° 36'.33 S 116° 45'.04E	special light buoy, <i>Fl.Y.3s</i> , without topmark
HP21	20° 36'.40 S 116° 45'.30 E	light beacon, <i>Q.Bu.</i> , with triangular topmark apex up
HP22	20° 36'.52 S 116° 45'.41 E	light beacon, <i>Iso.Bu.4s</i> , with triangular topmark apex down
HP23	20° 36'.15 S 116° 45'.23 E	lit dolphin, <i>F.R</i>
HPR1	20° 33'.23 S 116° 42'.56 E	light beacon, <i>Oc.3s</i> , with topmark apex down

**Chart which will be affected - Aus 57 - Aus 58 - Aus 59 - AU5XXX58****629(T)/2010 AUSTRALIA - WESTERN AUSTRALIA - Dampier Archipelago - Scientific instruments northwestwards**

Former Notice - 523(T)/2004 is cancelled

MetOcean Engineers (AA472066)

Scientific instruments exist as follows:

<i>Position (WGS84 datum)</i>	<i>Remarks</i>
19° 36'.38 S 116° 07'.53 E	lit buoy, <i>Fl(5)Y.20s</i>
19° 36'.51 S 116° 07'.63 E	5 poly floats

**Chart temporarily affected - Aus 327****630(T)/2010 AUSTRALIA - WESTERN AUSTRALIA - Dampier Archipelago - Scientific instruments northwestwards**

Former Notice - 1329(T)/2009 is cancelled

Date - Until 31 October 2010

MetOcean Engineers (AA472066)

Special light buoys, *Fl(5)Y.20s*, exist in positions 19° 36'.48 S 116° 06'.09 E and 19° 36'.56 S 116° 06'.22 E (WGS84 datum).**Chart temporarily affected - Aus 327**

**631(T)/2010 AUSTRALIA - WESTERN AUSTRALIA - Montebello Islands - Scientific instruments northwestwards***Date* - Until 30 November 2010

MetOcean Engineers (AA472066)

Subsurface scientific instruments exist in the following positions (WGS84 datum):

20° 01'.36 S 115° 11'.34 E  
 20° 02'.98 S 115° 16'.95 E  
 20° 05'.68 S 115° 03'.00 E  
 20° 06'.31 S 115° 04'.56 E  
 20° 06'.62 S 115° 06'.62 E  
 20° 06'.85 S 115° 06'.52 E  
 20° 06'.96 S 115° 06'.48 E  
 20° 07'.01 S 115° 06'.56 E  
 20° 07'.12 S 115° 06'.82 E  
 20° 07'.78 S 115° 08'.91 E  
 20° 09'.23 S 115° 12'.70 E.

**Chart temporarily affected - Aus 328 - Aus 742 - AU421115****632(T)/2010 AUSTRALIA - WESTERN AUSTRALIA - Thevenard Island to Ashburton Road - Scientific instruments***Former Notice* - 396(T)/2010 is cancelled*Date* - Until 31 March 2011

MetOcean Engineers (AA472066, AA473263)

Scientific instruments exist as follows:

<i>Position (WGS84 datum)</i>	<i>Remarks</i>
21° 18'.74 S 115° 06'.64 E	lit buoy, <i>Fl(5)Y.20s</i>
21° 21'.86 S 114° 51'.20 E	5 poly floats
21° 22'.08 S 114° 50'.91 E	lit buoy, <i>Fl(5)Y.20s</i>
21° 22'.08 S 114° 51'.00 E	5 poly floats
21° 25'.95 S 114° 55'.97 E	lit buoy, <i>Fl(5)Y.20s</i>
21° 26'.13 S 114° 55'.85 E	5 poly floats
21° 29'.13 S 115° 00'.15 E	5 poly floats
21° 29'.15 S 115° 00'.94 E	lit buoy, <i>Fl(5)Y.20s</i>
21° 29'.21 S 115° 00'.94 E	5 poly floats
21° 30'.12 S 115° 02'.92 E	lit buoy, <i>Fl(5)Y.20s</i>
21° 31'.40 S 114° 54'.90 E	lit buoy, <i>Fl(5)Y.20s</i>
21° 31'.62 S 115° 07'.04 E	lit buoy, <i>Fl(5)Y.20s</i>
21° 31'.63 S 114° 46'.37 E	lit buoy, <i>Fl(5)Y.20s</i>
21° 31'.66 S 115° 07'.07 E	5 poly floats
21° 35'.13 S 114° 56'.38 E	lit buoy, <i>Fl(5)Y.20s</i>
21° 35'.17 S 114° 56'.38 E	5 poly floats
21° 36'.30 S 115° 04'.94 E	lit buoy, <i>Fl(5)Y.20s</i>
21° 36'.30 S 115° 04'.75 E	5 poly floats
21° 38'.11 S 114° 41'.18 E	lit buoy, <i>Fl(5)Y.20s</i>
21° 39'.32 S 115° 00'.77 E	lit buoy, <i>Fl(5)Y.20s</i>

**Chart temporarily affected - Aus 64 - Aus 743 - Aus 744 - AU422114 - AU422115****633(T)/2010 AUSTRALIA - WESTERN AUSTRALIA - Albany - Harbour works***Date* - Until 30 November 2010

Department of Transport WA (AA472609 - AA472612)

Works associated with the construction of the new marina are in progress (35° 01'.9 S 117° 53'.3 E).

Mariners are advised to navigate with caution in the area.

**Chart temporarily affected - Aus 109 - AU5XX109**

**634(T)/2010 AUSTRALIA - SOUTH AUSTRALIA - Wallaroo Bay - Wreck salvaged**

*Former Notice* - 525(T)/2010 is cancelled

Department of Transport, Energy and Infrastructure SA (AA472903)

Cancel this notice on receipt.

**Chart formerly affected - Aus 777 - AU5777P1****635(T)/2010 AUSTRALIA - TASMANIA - Currie Harbour - Lights unlit**

*Former Notice* - 575(T)/2010 is cancelled

*Date* - Until 12 June 2010

Marine and Safety Tasmania Notice M61/2010 (AA472593)

All lights in Currie Harbour are unlit.

Mariners are advised not to navigate the harbour between sunset and sunrise.

**Chart temporarily affected - Aus 178 - AU5178P7****636(T)/2010 AUSTRALIA - TASMANIA - Georges Bay - Buoy off station**

Marine and Safety Tasmania Notice M62/2010 (AA473351)

The special buoy (41° 16'.23 S 148° 20'.29 E) is off station.

**Chart temporarily affected - Aus 169 - AU442148****637(T)/2010 AUSTRALIA - VICTORIA - Port Phillip - Port Melbourne - Swanson Dock - Harbour works completed**

*Former Notice* - 926(T)/2009 is cancelled

Port of Melbourne Corporation (AA471872)

Cancel this notice on receipt.

**Chart formerly affected - Aus 154 - AU5XX154****638(T)/2010 AUSTRALIA - VICTORIA - Port Phillip - Port Melbourne - River Yarra - Harbour works completed**

*Former Notices* - 1252(T)/2009, 1469(T)/2009 are cancelled

Port of Melbourne Corporation (AA471872)

Cancel this notice on receipt.

**Chart formerly affected - Aus 154 - AU5XX154****639(T)/2010 AUSTRALIA - VICTORIA - Western Port - Rhyll - Harbour works completed**

*Former Notice* - 468(T)/2010 is cancelled

Victorian Notice 36(T)/2010 (AA466109)

Cancel this notice on receipt.

**Chart formerly affected - Aus 150 - AU5150P3**

## HYDROGRAPHIC REPORTS

<i>Locality</i>	<i>Report</i>	<i>Ship/Authority</i>	<i>Observer</i>
QLD- Weipa Bait Reef	ENC update Bombie	MV <i>River Boyne</i>	A Honey
NSW- Port Jackson	Topographical error		H Ferrar

**NAVIGATION WARNINGS**

The following radio messages have been received during the period to 4 Jun 2010. Signal copies of these messages may be destroyed. It is recommended that the reprint of Navigational Warnings should be kept in a file or a book divided into areas. Cancellation should be made on receipt of signals and reprints.

Rigs on location other than those listed in the latest Section III summary are the subject of Radio Navigational Warnings. Rigs in transit will not be the subject of Warnings.

**AUSCOAST WARNING**

- 122 Cancelled.  
 123 Special purpose vessel *Geo Celtic* conducting seismic survey towing 5M cables in area bounded by 20° 45'·0 S to 21° 30'·0 S and 112° 30'·0 E to 114° 50'·0 E. 6M clearance requested.  
 124 Special purpose vessel *Beaufort Explorer* conducting seismic survey towing 5M cable in area bounded by 16° 30'·0 S to 18° 00'·0 S and 120° 40'·0 E to 121° 55'·0 E. 5M clearance requested.  
 125 Drill rig *Ocean America* in position 19° 24'·13 S 114° 14'·59 E. 2·5M clearance requested.  
 126 Cancelled.  
 127 Cancelled.  
 128 Cancelled.  
 129 Cancelled.  
 130 Cancelled.

**NAVAREA X WARNINGS**

- 006 Fairway Landfall buoy (31° 57'·3 S 115° 38'·8 E) reported unlit and racon temporarily discontinued.

**Navigational warnings in force as at 040001UTC JUN 10.****Auscoast**

092 097 100 105 109 110 111 114 116 119 120 121 123 124 125

**Navarea X**

006

**Summary of mobile drilling rigs as at 040001UTC JUN 10.**

<i>Name</i>	<i>Position</i>
Songa Venus	13° 40'·53 S 123° 21'·31 E
Transocean Legend	13° 41'·53 S 122° 11'·29 E
Ocean Shield	21° 19'·25 S 115° 07'·75 E
Maersk Discoverer	19° 01'·34 S 114° 33'·25 E
Ocean America	19° 24'·13 S 114° 14'·59 E
Ensco 7500	19° 33'·00 S 114° 07'·80 E
Ocean Epoch	21° 30'·10 S 114° 08'·70 E
Nan Hai 6	21° 28'·90 S 113° 59'·30 E
Jack Bates	20° 06'·53 S 113° 43'·49 E
Atwood Eagle	19° 49'·08 S 112° 22'·15 E
Ocean Patriot	38° 10'·86 S 148° 35'·58 E

**NAVAREA XIV WARNINGS**

Nil.

**Navarea XIV warnings in force as at 040001UTC JUN 10.**

007 014

*To accompany Australian Notice to Mariners 586/2010*

MILITARY EXERCISE AREA

Military operations are conducted within the area of this chart. For area limits and details see Australian Notice to Mariners No 9.

*Note for chart Aus 811.*

*To accompany Australian Notice to Mariners 594/2010*

TIDAL STREAMS - SUNDAY STRAIT

Tidal streams exceeding 10 knots have been reported in the Sunday Strait area. Extensive overfalls and eddies exist at spring tides. For details see Australia Pilot Vol I NP13.

*Note for chart Aus 732.*

*To accompany Australian Notice to Mariners 594/2010*

TIDAL STREAMS - SUNDAY STRAIT

Tidal streams exceeding 10 knots have been reported in the Sunday Strait area. Extensive overfalls and eddies exist at spring tides. For details see Australia Pilot Vol I NP13.

*Note for chart Aus 733.*

*To accompany Australian Notice to Mariners 595/2010*

HISTORIC WRECK

The site of an historic wreck is protected from unauthorised interference. For details see Australian Seafarers Handbook AHP 20.

*Note for chart Aus 741.*

*To accompany Australian Notice to Mariners 595/2010*

MILITARY EXERCISE AREA

Military operations are conducted within the area of this chart. For area limits and details see Australian Notice to Mariners No 9.

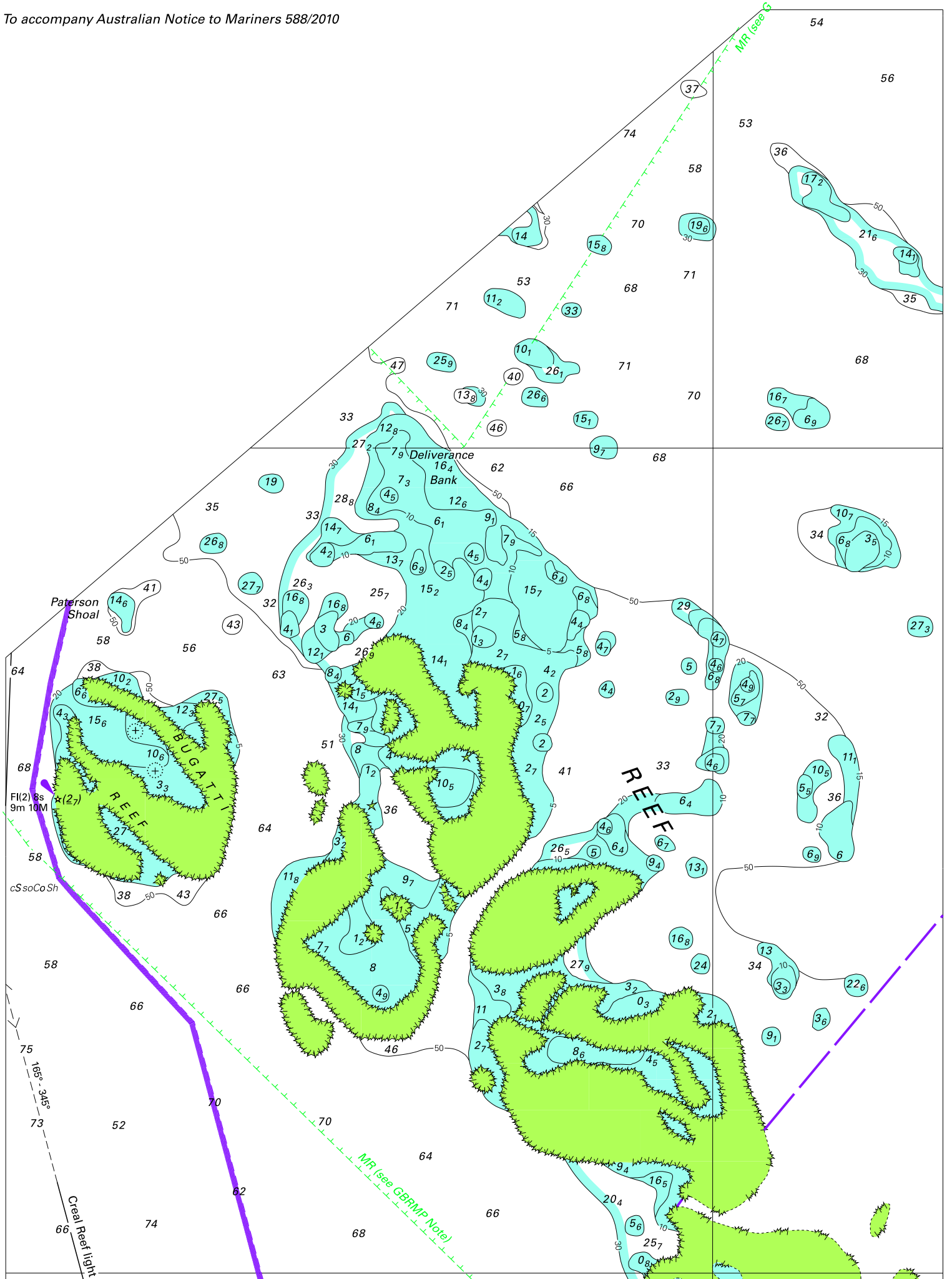
*Note for chart Aus 742.*

*To accompany Australian Notice to Mariners 595/2010*

CAUTIONARY AREA

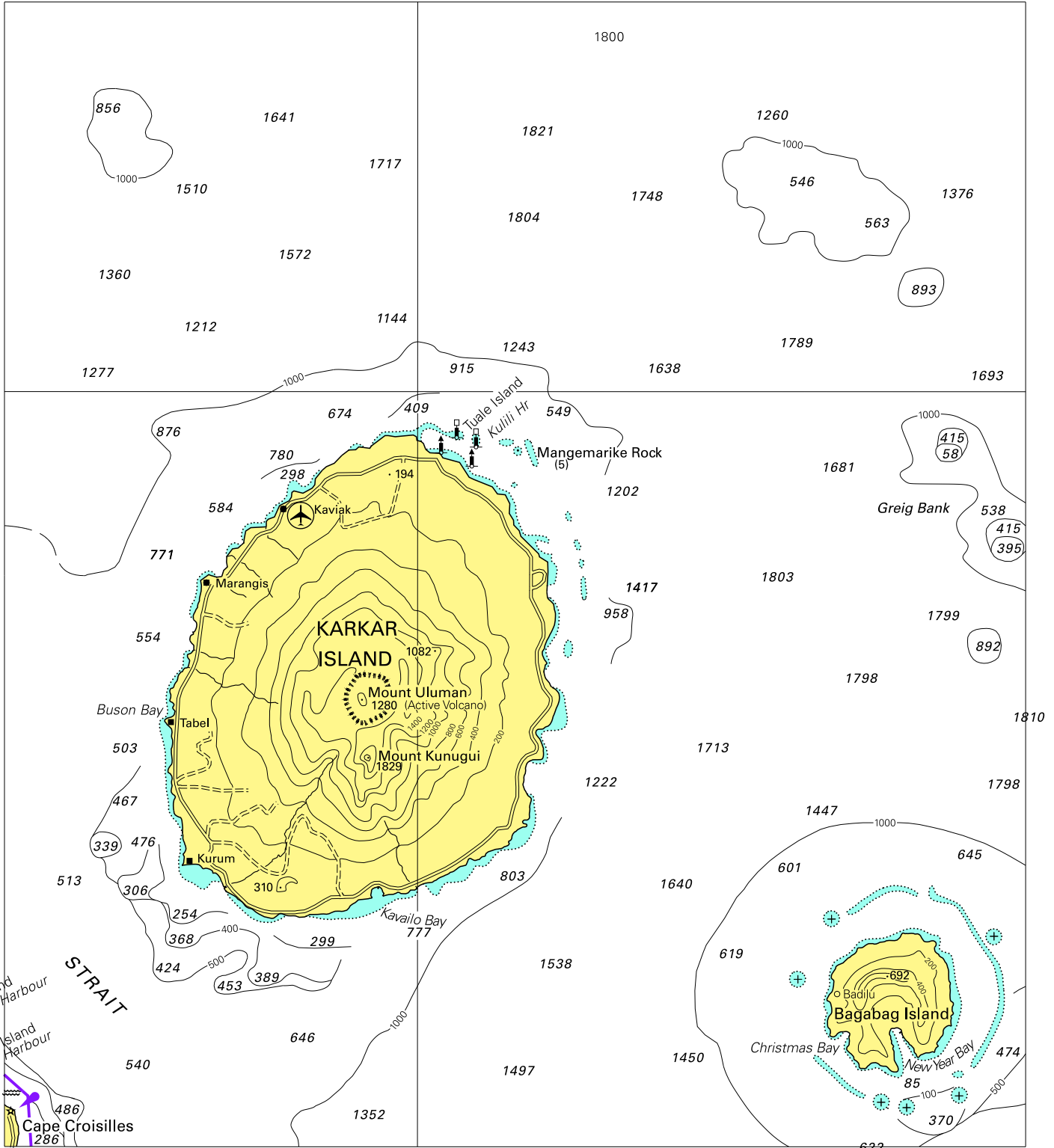
Vessels are to avoid navigating, anchoring or fishing within this area.

*Note for chart Aus 742.*





To accompany Australian Notice to Mariners 589/2010

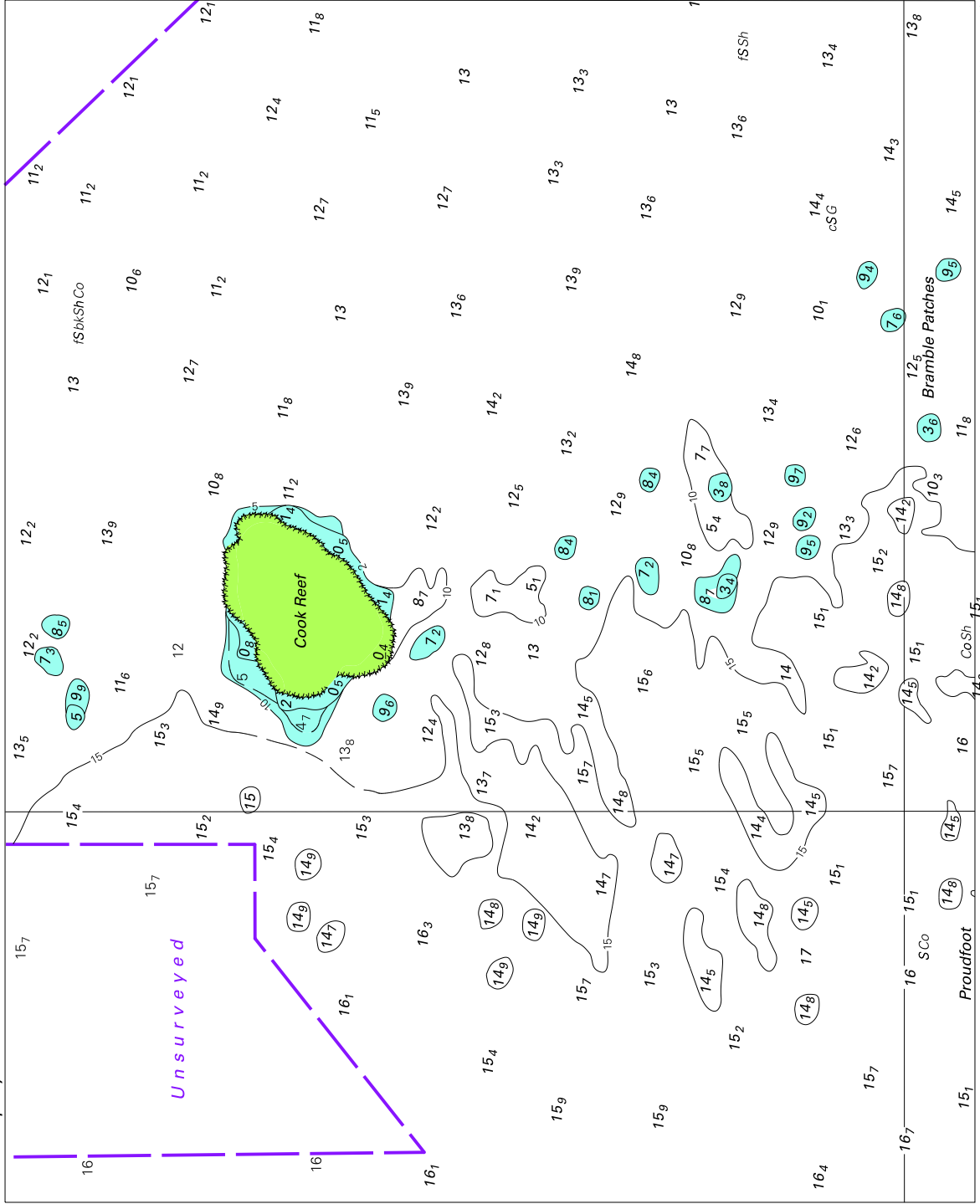


Block for chart Aus 388

© Commonwealth of Australia 2010

(202.4 x 180.6)

To accompany Australian Notice to Mariners 590/2010

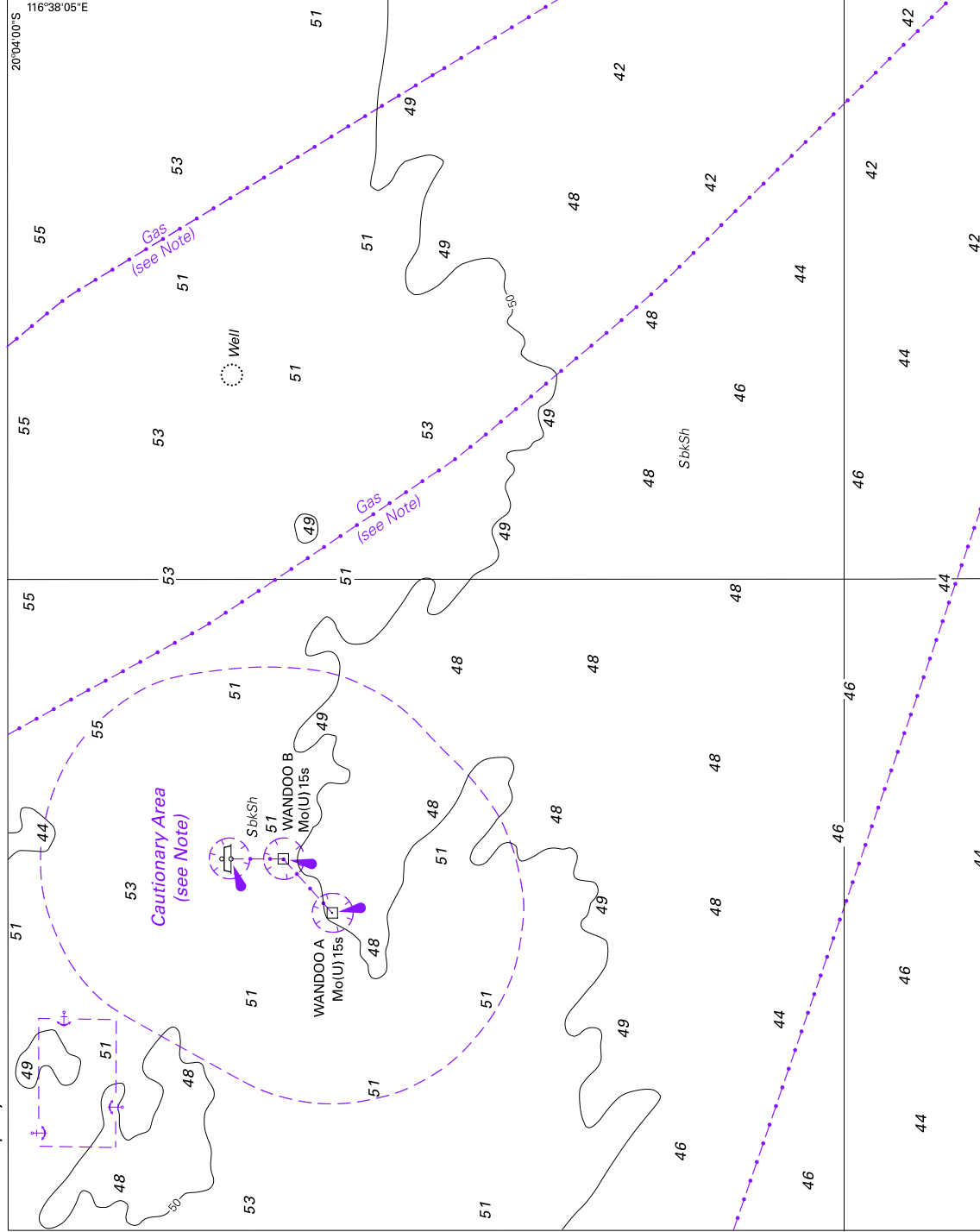


Block for chart Aus 700

© Commonwealth of Australia 2010

(190.0 x 153.3mm)

To accompany Australian Notice to Mariners 595/2010

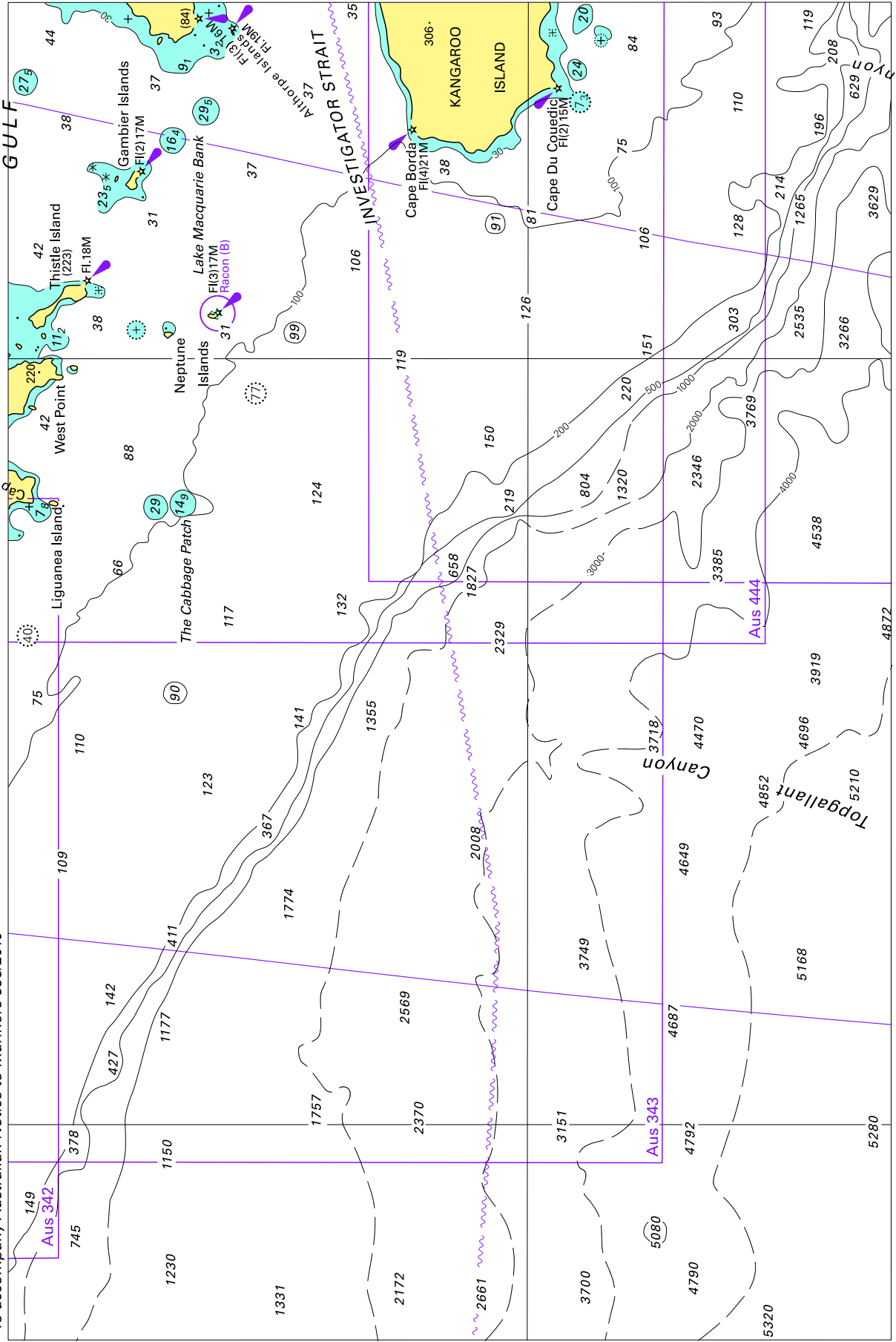


Block for chart Aus 742

© Commonwealth of Australia 2010

(188.7 x 149.9mm)

To accompany Australian Notice to Mariners 598/2010



Block for chart Aus 4727

© Commonwealth of Australia 2010

(238.5 x 157.4mm)