



21 May 2010

Edition 10

Australian Notices to Mariners are the authority for correcting Australian Charts and Publications

---

# AUSTRALIAN NOTICES TO MARINERS

Notices 533 – 577 

Published fortnightly by the Australian Hydrographic Service

Commodore R. NAIRN RAN  
*Hydrographer of Australia*

---

## SECTIONS.

- I. **Australian Notices to Mariners, including blocks and notes.**
- II. **Hydrographic Reports.**
- III. **Navigational Warnings.**

## SUPPLEMENTS.

- I. **Tracings**
- II. **Cumulative List of Australian Notices to Mariners.**
- III. **Temporary and Preliminary Notices in force.**
- IV. **Amendments to Admiralty List of Lights and Fog Signals (Vol K),  
Radio Signals (NP 281(2), 282, 283(2), 285, 286(4)) and Sailing  
Directions (NP 9, 13, 14, 15, 33, 34, 35, 36, 39, 44, 51, 60, 61, 62, 100, 136).**

---

© Commonwealth of Australia 2010

This work is copyright. Apart from any use permitted under the Copyright Act 1968, no part may be reproduced by any process, adapted, communicated or commercially exploited without prior written permission from The Commonwealth represented by the Australian Hydrographic Service.

## **IMPORTANT NOTICE**

This edition of Notices to Mariners includes all significant information affecting AHS products which the AHS has become aware of since the last edition. All reasonable efforts have been made to ensure the accuracy and completeness of the information, including third party information, on which these updates are based. The AHS regards third parties from which it receives information as reliable, however the AHS cannot verify all such information and errors may therefore exist. The AHS does not accept liability for errors in third party information.

---

## **GENERAL INSTRUCTIONS**

The substance of these notices should be inserted on the charts affected.

Bearings are referred to the true compass and are reckoned clockwise from North; those relating to lights are given as seen by an observer from seaward. Positions quoted in permanent notices relate to the horizontal datum for the chart(s). When preliminary or temporary notices affect multiple charts, positions will be provided in relation to only one horizontal datum and that datum will be specified. When the multiple charts do not have a common horizontal datum, mariners will be required to adjust the position(s) for those charts not on the specified datum. The range quoted for a light is its nominal range. Depths are with reference to the chart datum of each chart. Heights are above mean high water springs or mean higher high water, as appropriate.

The capital letter (P) or (T) after the number of any notice denotes a preliminary or temporary notice respectively, which are contained separately at the end of the permanent notices. A star (\*) adjacent to the number of a notice indicates that the notice is based on original information.

---

## **REPORTING OF DANGERS**

Mariners are particularly requested to notify the AUSTRALIAN HYDROGRAPHIC SERVICE, Locked Bag 8801 Wollongong, NSW 2500 (Fax 02-4223 6599, e-mail [Hydro.NTM@defence.gov.au](mailto:Hydro.NTM@defence.gov.au) or, alternatively by filling in and submitting the [Hydrographic Notes](#) forms located on the web site – [www.hydro.gov.au](http://www.hydro.gov.au)), immediately on the discovery of new dangers or suspected dangers to navigation. For changes or defects in aids to navigation notify AusSAR (Fax 02-6230 6868 or email [rccaus@amsa.gov.au](mailto:rccaus@amsa.gov.au)).

---

## **AUTHORISED USE**

Copies of Australian notices are available free of charge from the Australian Hydrographic Service (AHS) website ([www.hydro.gov.au](http://www.hydro.gov.au)) and through the eNotices (email) service ([www.hydro.gov.au/enotices/enotices.htm](http://www.hydro.gov.au/enotices/enotices.htm)).

Individual Notices may be copied for the purpose of inserting Notice substance on official charts and publications. Paper copies may be printed by chart agents and distributed to customers on a cost recovery basis. Participating chart agents are listed on the AHS website as providing a 'Paper Notices to Mariners' service ([www.hydro.gov.au/prodserv/distributors/distributors.htm](http://www.hydro.gov.au/prodserv/distributors/distributors.htm)). Copies of the notices may not be sold for profit without prior written agreement.

## NUMERICAL INDEX OF NOTICES TO MARINERS

### Edition No 10

| Notices     | Aus Chart, INT Chart, ENC Cell, AHP  |
|-------------|--|
| 533.....    | Aus 154, AU220130, 312140, 314139, 315139, 315141, 415129, 416129              |
| 534.....    | Amendment to Australian Seafarers Handbook AHP 20                              |
| 535.....    | Amendment to Australian National Tide Tables 2010                              |
| 536.....    | Aus 208  |
| 537.....    | Aus 219, 424, 489, 810   |
| 538.....    | Aus 610  |
| 539.....    | Aus 235  |
| 540.....    | Aus 827, 828   |
| 541.....    | Aus 833  |
| 542.....    | Aus 840, AX 66003  |
| 543.....    | Aus 4060, 4602, 4604, 4621, INT 60, 602, 604, 621, AX 4604F, 4621F             |
| 544.....    | Aus 4621, INT 621, AX 4621F  |
| 545.....    | Aus 726  |
| 546.....    | Aus 319, AX 0319F  |
| 547.....    | Aus 328, 329, 744  |
| 548.....    | Aus 756  |
| 549.....    | Aus 118, AX 0118E  |
| 550.....    | Aus 130, 137, 138  |
| 551.....    | Aus 171, 172   |
| 552.....    | Aus 143, 155   |
| 553.....    | Aus 422, 487, 799, 802   |
| 554.....    | Aus 4602, INT 602  |
| 555(T)..... | Aus 207, 208, AU5XX208   |
| 556(T)..... | Aus 222, 812, 813  |
| 557(T)..... | Aus 230, 813, 814, AU428153, 5XX230  |
| 558(T)..... | Aus 236, AU428153  |
| 559(T)..... | Aus 236  |
| 560(T)..... | Aus 236, 237, AU428153, 5237X8   |
| 561(T)..... | Aus 242, AU5XX242  |
| 562(T)..... | Aus 260, 261, 367, 822, AX 0260E, 0367E, 0822E, 60260, 67261, AU423150, 5261P2 |
| 563(T)..... | Aus 260, 367, 822, AX 0260E, 0367E, 0822E, 60260, AU423150                     |
| 564(T)..... | Aus 249, 250, AX 0249E, AU422149, 5250P1                                       |
| 565(T)..... | Aus 252, 253, 268, AU421148, 5268P2  |
| 566(T)..... | Aus 4604, INT 604, AX 4604F, AU130150  |
| 567(T)..... | Aus 6  |
| 568(T)..... | Aus 24, 26, 28, AX 72026, AU5XXX24   |
| 569(T)..... | Aus 314, 319, 4721, 4722, INT 721, 722, AX 0314F, 0319F, AU313124              |
| 570(T)..... | Aus 59, AU5XXX58   |
| 571(T)..... | Aus 327  |
| 572(T)..... | Aus 444, 778   |
| 573(T)..... | Aus 139, 780   |
| 574(P)..... | Aus 141  |
| 575(T)..... | Aus 178, AU5178P7  |
| 576(T)..... | Aus 143, 155, AU438144   |
| 577(T)..... | Aus 143, 155, AU439145   |



**533 AUSTRALIA - Product**

Australian Hydrographic Service (AA470326, AA471641)

**New Edition to be published shortly**

| <i>Chart</i> | <i>Title</i>   | <i>Scale</i>           | <i>Expected<br/>Publication Date</i> | <i>Expected Stock<br/>Availability</i> |
|--------------|--|------------------------|--------------------------------------|--|
| Aus 154      | Australia - South Coast - Victoria - Port Melbourne<br>- Williamstown and River Yarra<br>Inset:<br>River Yarra | 1:7 500<br><br>1:7 500 | 21 May 2010                          | 28 June 2010                           |

**New Electronic Navigation Chart (Seafarer ENC)**

| <i>Cell Name</i> | <i>Released</i> | <i>Title</i>                                       |
|------------------|-----------------|--|
| AU220130         | May 2010        | Australia - Gulf of Carpentaria to Bathurst Island |
| AU312140         | May 2010        | Gulf of Carpentaria - Cell 1                       |
| AU314139         | May 2010        | Gulf of Carpentaria - Cell 9                       |
| AU315139         | May 2010        | Gulf of Carpentaria - Cell 8                       |
| AU315141         | May 2010        | Gulf of Carpentaria - Kendall River to Pormpuraaw  |
| AU415129         | May 2010        | Northern Territory - Port Keats to Victoria River  |
| AU416129         | May 2010        | Northern Territory - Victoria River                |

For further details refer to the AHS website at [www.hydro.gov.au](http://www.hydro.gov.au) for new edition and new chart stock arrival information.

When placing orders with a chart agent, mariners should advise whether their order pertains to the current edition or the new edition.

**534 AUSTRALIA - Product - Amendment to Australian Seafarers Handbook AHP 20**

Australian Hydrographic Service (AA469318, AA469320)

*Substitute* accompanying tables on pages 32, 78, 79, 91, 199, 215, 225, 227, 228, 229, 230, 231, 232, 233

Page 98 Paragraph 6.1.0 (5) line 8

*Delete* Environment Protection Agency (QLD)

*Insert* Department of Environment and Resource Management

**535 AUSTRALIA - Product - Amendment to Australian National Tide Tables 2010**

Australian Hydrographic Service (AA469893, AA470307)

Page xxxiv

*Insert* Lae To Chart Datum AUS 643 NC 12 MAR 2010 0.0

Page xxxv

*Insert* Lucinda (Offshore) To Chart Datum AUS 267 NC 26 MAR 2010 0.0

**536\* AUSTRALIA - NEW SOUTH WALES - Newcastle - Berth; depths**

Newcastle Port Corporation (AA469344)

**Aus 208** [NE 26/3/2010]

*Insert* accompanying block

32° 53'.8 S

151° 46'.1 E

**537\* AUSTRALIA - NEW SOUTH WALES - Sugarloaf Point - Light altered**

Australian Maritime Safety Authority ATH 4/2010 (AA468549)

**Aus 219 (plan, Sugarloaf Anchorage) [474/2010]**Amend light to *Fl.7.5s 79m 25M & F.R.73m 13M* 32° 26'.45 S 152° 32'.34 E**Aus 424 [247/2010]**Amend light to *Fl.25M & F.R. 13M* 32° 26'.5 S 152° 32'.3 E**Aus 489 [406/2010]**Amend light to *Fl.7.5s 25M & F.R.13M* 32° 26'.5 S 152° 32'.3 E**Aus 810 [100/2010]**Amend light to *Fl.7.5s 79m 25M & F.R.73m 13M* 32° 26'.5 S 152° 32'.3 E**538\* AUSTRALIA - TASMAN SEA - Balls Pyramid - Contour**

Australian Hydrographic Service (AA455277)

**Aus 610 [855/2009]**

|        |                  |              |               |
|--------|------------------|--------------|---------------|
| Insert | contour, between | 31° 43'.03 S | 159° 18'.21 E |
|        |                  | 31° 43'.16 S | 159° 18'.43 E |
|        |                  | 31° 42'.68 S | 159° 17'.24 E |
|        |                  | 31° 42'.76 S | 159° 17'.34 E |

|        |                  |              |               |
|--------|------------------|--------------|---------------|
| Delete | contour, between | 31° 43'.16 S | 159° 18'.43 E |
|        |                  | 31° 42'.68 S | 159° 17'.24 E |

**539\* AUSTRALIA - QUEENSLAND - Pumicestone Channel - Light buoys altered***Former Notice - 663(T)/2009 is cancelled*

Maritime Safety Queensland Notice 384/2010 (AA468622)

**Aus 235 [104/2010]**

|       |                              |             |              |
|-------|------------------------------|-------------|--------------|
| Amend | light buoy to <i>Fl.R.3s</i> | 26° 48'.5 S | 153° 07'.9 E |
|       | light buoy to <i>Fl.R.3s</i> | 26° 48'.4 S | 153° 07'.8 E |

**540\* AUSTRALIA - QUEENSLAND - Allingham - Light**

Maritime Safety Queensland Notice 347/2010 (AA466084)

**Aus 827 [775/2008]**

|      |       |              |               |
|------|-------|--------------|---------------|
| Move | light | 18° 42'.4 S  | 146° 17'.9 E  |
|      | to    | 18° 42'.60 S | 146° 17'.84 E |

**Aus 828 [476/2010]**

|      |       |              |               |
|------|-------|--------------|---------------|
| Move | light | 18° 42'.4 S  | 146° 17'.9 E  |
|      | to    | 18° 42'.60 S | 146° 17'.84 E |

**541\* AUSTRALIA - QUEENSLAND - Corbett Reef - Depths; unsurveyed boundary**

LADS Flight (DHDB 1058475)

**Aus 833 [700/2009]**

|        |                              |             |              |
|--------|------------------------------|-------------|--------------|
| Insert | accompanying block           | 13° 56'.0 S | 144° 10'.0 E |
|        | magenta dashed line, between | 13° 57'.7 S | 144° 06'.5 E |
|        |                              | 13° 55'.7 S | 144° 05'.2 E |

|        |                              |             |              |
|--------|------------------------------|-------------|--------------|
| Delete | magenta dashed line, between | 13° 55'.0 S | 144° 06'.5 E |
|        |                              | 13° 55'.0 S | 144° 05'.5 E |

**542\* AUSTRALIA - QUEENSLAND - Warrior Reefs - Contours**

Australian Hydrographic Service (AA468548)

**Aus 840 [201/2010]**

|        |                  |             |               |
|--------|------------------|-------------|---------------|
| Insert | contour, between | 9° 44'.62 S | 142° 59'.32 E |
|        |                  | 9° 45'.12 S | 142° 59'.18 E |
|        |                  | 9° 44'.69 S | 142° 59'.70 E |
|        | contour, between | 9° 44'.94 S | 142° 58'.28 E |
|        |                  | 9° 45'.19 S | 142° 58'.03 E |
|        |                  | 9° 45'.52 S | 142° 58'.12 E |
| Delete | contour, between | 9° 44'.6 S  | 142° 59'.3 E  |
|        |                  | 9° 44'.7 S  | 142° 59'.7 E  |
|        | contour, between | 9° 44'.9 S  | 142° 58'.3 E  |
|        |                  | 9° 45'.5 S  | 142° 58'.1 E  |

**AX 66003 [1268/2009]**

|        |                  |             |               |
|--------|------------------|-------------|---------------|
| Insert | contour, between | 9° 44'.62 S | 142° 59'.32 E |
|        |                  | 9° 45'.12 S | 142° 59'.18 E |
|        |                  | 9° 44'.69 S | 142° 59'.70 E |
|        | contour, between | 9° 44'.94 S | 142° 58'.28 E |
|        |                  | 9° 45'.19 S | 142° 58'.03 E |
|        |                  | 9° 45'.52 S | 142° 58'.12 E |
|        | contour, between | 9° 44'.6 S  | 142° 59'.3 E  |
|        |                  | 9° 44'.7 S  | 142° 59'.7 E  |
| Delete | contour, between | 9° 44'.9 S  | 142° 58'.3 E  |
|        |                  | 9° 45'.5 S  | 142° 58'.1 E  |

**543\* AUSTRALIA - CORAL SEA - Mellish Reef - Depths**

Geoscience Australia (DHDB 951901)

**Aus 4060 (INT 60) [475/2010]**

|        |   |             |              |
|--------|---|-------------|--------------|
| Insert | depth, 1155m, and extend contour N to enclose | 18° 07'.2 S | 154° 53'.4 E |
| Delete | depth, 1538m                                  | 18° 08'.0 S | 154° 46'.0 E |

**Aus 4602 (INT 602) [475/2010]**

|        |              |             |              |
|--------|--------------|-------------|--------------|
| Insert | depth, 1155m | 18° 07'.2 S | 154° 53'.4 E |
| Delete | depth, 1538m | 18° 08'.0 S | 154° 46'.0 E |

**Aus 4604 (INT 604) [358/2010]**

|        |              |             |              |
|--------|--------------|-------------|--------------|
| Insert | depth, 1155m | 18° 07'.2 S | 154° 53'.4 E |
| Delete | depth, 1538m | 18° 08'.0 S | 154° 46'.0 E |

**Aus 4621 (INT 621) [433/2010]**

|        |              |             |              |
|--------|--------------|-------------|--------------|
| Insert | depth, 1155m | 18° 07'.2 S | 154° 53'.4 E |
| Delete | depth, 1538m | 18° 08'.0 S | 154° 46'.0 E |

**AX 4604F [358/2010]**

|        |              |             |              |
|--------|--------------|-------------|--------------|
| Insert | depth, 1155m | 18° 07'.2 S | 154° 53'.4 E |
| Delete | depth, 1538m | 18° 08'.0 S | 154° 46'.0 E |

**AX 4621F [433/2010]**

|        |              |             |              |
|--------|--------------|-------------|--------------|
| Insert | depth, 1155m | 18° 07'.2 S | 154° 53'.4 E |
| Delete | depth, 1538m | 18° 08'.0 S | 154° 46'.0 E |

**544\* PAPUA NEW GUINEA - Adele Island - Depths**

Geoscience Australia (DHDB 951901)

**Aus 4621 (INT 621) [543/2010]**

Insert depth, 572m 11° 09'.1 S 154° 40'.6 E

Delete depth, 753m 11° 03'.0 S 154° 45'.0 E

**AX 4621F [543/2010]**

Insert depth, 572m 11° 09'.1 S 154° 40'.6 E

Delete depth, 753m 11° 03'.0 S 154° 45'.0 E

**545\* AUSTRALIA - WESTERN AUSTRALIA - King Shoals - Contour**

Australian Hydrographic Service (AA456621, AA456622)

**Aus 726 [1311/2009]**Insert broken contour to semi enclose depth, 15<sub>3</sub>m, to SW 14° 36'.3 S 128° 10'.5 E**546\* AUSTRALIA - WESTERN AUSTRALIA - Ashmore Reef - Contour**

Australian Hydrographic Service (AA456627)

**Aus 319 [1160/2009]**Insert contour to enclose depth, 29<sub>8</sub>m 12° 16'.0 S 123° 14'.5 E**AX 0319F [1160/2009]**Insert contour to enclose depth, 29<sub>8</sub>m 12° 16'.0 S 123° 14'.5 E**547\* AUSTRALIA - WESTERN AUSTRALIA - Muiron Islands - Racon northwestwards**

Woodside Energy Ltd (AA430692)

**Aus 328 [419/2010]**Insert magenta legend, *Racon (U)*, centred on 21° 27'.3 S 114° 05'.4 E**Aus 329 [419/2010]**Insert magenta legend, *Racon (U)*, centred on 21° 26'.2 S 114° 05'.6 E**Aus 744 [483/2010]**Insert magenta legend, *Racon (U)*, centred on 21° 26'.4 S 114° 04'.9 E**548\* AUSTRALIA - WESTERN AUSTRALIA - Geographe Bay - Light buoys established**

Department of Transport WA (AA458661, AA458663)

**Aus 756 [1108/2009]**

Insert accompanying block 33° 35'.0 S 115° 15'.0 E

**549\* AUSTRALIA - WESTERN AUSTRALIA - Lookout Point - Depths**

Australian Hydrographic Service (AA470209)

**Aus 118 [874/2009]**

Insert accompanying block 34° 56'.0 S 118° 24'.0 E

**AX 0118E [NC 19/6/2009]**

Insert accompanying block 34° 56'.0 S 118° 24'.0 E

**550\* AUSTRALIA - SOUTH AUSTRALIA - Adelaide - Depths; recommended tracks**

Department for Transport, Energy and Infrastructure Notice SA 21/2010 (AA469337), HydroSurvey Australia (DHDB 1497441)

**Aus 130 [490/2010]**

Insert accompanying block 34° 47'.7 S 138° 25'.5 E

**Aus 137 [490/2010]**

Insert accompanying block 34° 47'.5 S 138° 26'.5 E

**Aus 138 [490/2010]**

|        |   |               |                |
|--------|---|---------------|----------------|
| Insert | accompanying block  | 34° 47'.5 S   | 138° 26'.0 E   |
|        | recommended track, 090° - 270°, with maximum draught, 12.2m | 34° 47'.166 S | 138° 24'.376 E |
|        |   | 34° 47'.166 S | 138° 22'.737 E |

**551\* AUSTRALIA - TASMANIA - River Derwent - Hobart - Light buoy**

Bellerive Yacht Club (AA457739)

**Aus 171 [212/2010]**Amend structure colour to *Or* 42° 53'.38 S 147° 22'.35 E**Aus 172 [45/2010]**Amend structure colour to *Or* 42° 53'.36 S 147° 22'.35 E**552\* AUSTRALIA - VICTORIA - Port Phillip - Port Melbourne Channel - Light beacons altered**

Victorian Notice 44/2010 (AA469624)

**Aus 143 [312/2010]**Amend light beacon to *Fl.G.1.5s* 37° 57'.8 S 144° 55'.5 E**Aus 155 [NC 29/1/2010]**

|       |                                  |              |               |
|-------|----------------------------------|--------------|---------------|
| Amend | light beacon to <i>Fl.R.1.5s</i> | 37° 57'.79 S | 144° 55'.36 E |
|       | light beacon to <i>Fl.G.1.5s</i> | 37° 57'.80 S | 144° 55'.51 E |

**553\* AUSTRALIA - BASS STRAIT - Five Mile Bluff to Ninety Mile Beach - Submarine power cable**

Basslink Pty Ltd (AA470146, AA470147)

**Aus 422 [493/2010]**

|        |                                |             |              |
|--------|--------------------------------|-------------|--------------|
| Insert | submarine power cable, between | 41° 01'.9 S | 146° 51'.6 E |
|        |                                | 40° 58'.1 S | 146° 50'.5 E |
|        |                                | 40° 14'.9 S | 146° 52'.2 E |

|        |                                |             |              |
|--------|--------------------------------|-------------|--------------|
| Delete | submarine power cable, between | 41° 01'.9 S | 146° 51'.6 E |
|        |                                | 40° 14'.9 S | 146° 52'.2 E |

**Aus 487 [311/2010]**

|        |                                |              |               |
|--------|--------------------------------|--------------|---------------|
| Insert | submarine power cable, between | 41° 01'.88 S | 146° 51'.65 E |
|        |                                | 41° 01'.21 S | 146° 51'.28 E |
|        |                                | 41° 00'.32 S | 146° 51'.39 E |
|        |                                | 40° 58'.14 S | 146° 50'.52 E |
|        |                                | 40° 14'.91 S | 146° 52'.23 E |

|        |                                |             |              |
|--------|--------------------------------|-------------|--------------|
| Delete | submarine power cable, between | 41° 01'.9 S | 146° 51'.7 E |
|        |                                | 40° 14'.9 S | 146° 52'.2 E |

**Aus 799 [1367/2009]**

|        |                                |              |               |
|--------|--------------------------------|--------------|---------------|
| Insert | submarine power cable, between | 40° 59'.56 S | 146° 51'.23 E |
|        |                                | 40° 58'.14 S | 146° 50'.52 E |
|        |                                | 40° 27'.80 S | 146° 51'.71 E |

|        |                                |             |              |
|--------|--------------------------------|-------------|--------------|
| Delete | submarine power cable, between | 40° 59'.6 S | 146° 51'.2 E |
|        |                                | 40° 27'.8 S | 146° 51'.9 E |

**Aus 802 [555/2009]**

|        |                                |              |               |
|--------|--------------------------------|--------------|---------------|
| Insert | submarine power cable, between | 39° 33'.58 S | 146° 53'.77 E |
|        |                                | 39° 11'.67 S | 146° 54'.64 E |
|        |                                | 38° 49'.00 S | 147° 00'.52 E |
|        |                                | 38° 47'.37 S | 147° 00'.84 E |

|        |                                |             |              |
|--------|--------------------------------|-------------|--------------|
| Delete | submarine power cable, between | 39° 33'.6 S | 146° 53'.8 E |
|        |                                | 38° 47'.4 S | 147° 00'.8 E |

**554\* PACIFIC OCEAN - South Fiji Basin - Scientific instrument established**

Australian Bureau of Meteorology (AA468626, AA468625)

**Aus 4602 (INT 602) [543/2010]**

|        |   |             |              |
|--------|---|-------------|--------------|
| Insert | white conical light buoy, <i>Fl. Y.2s</i> , without topmark | 26° 04'.2 S | 176° 00'.0 E |
|--------|---|-------------|--------------|

**555(T)/2010 AUSTRALIA - NEW SOUTH WALES - Newcastle - Depth information***Former Notice - 372(T)/2010 is cancelled*

Newcastle Port Corporation (AA470442, AA471417)

Available depths as at 19 May 2010:

| <i>Berth</i>  | <i>Metres</i>                      |
|---|------------------------------------|
| Western Basin 3                                       | 11.4                               |
| Western Basin 4                                       | 11.4                               |
| Eastern Basin 1                                       | 11.2                               |
| * Eastern Basin 2 North of Ch 450                     | 11.6                               |
| Eastern Basin 2 South of Ch 450                       | 11.0                               |
| Dockyard 2 (Dredge)                                   | 4.0                                |
| Channel Berth   | 8.3                                |
| Dyke 1  | 12.8                               |
| * Dyke 2  | 12.8                               |
| Dyke 4  | 16.1                               |
| Dyke 5  | 16.1                               |
| Dyke 6  | 6.3                                |
| * Mayfield 4 Ch 50 to 266                             | 12.8                               |
| BHP Wharf 6 to Ch 1050                                | 7.8                                |
| Kooragang 2   | 11.6                               |
| Kooragang 2 North Dolphin 11.0                        |                                    |
| Kooragang 2 South Dolphin                             | 11.0                               |
| Kooragang 3   | 13.0                               |
| Kooragang 4   | 16.5                               |
| Kooragang 5   | 16.1                               |
| Kooragang 6   | 16.0                               |
| * Kooragang 8   | 15.3                               |
| Kooragang 9   | TBA                                |
| Kooragang Ship Reveal KSR                             | 8.0                                |
| Throsby 1   | 9.3                                |
| Carrington wharf                                      | To be sounded as and when required |
| Former Tug berth 4                                    | 6.5                                |
| Elgo wharf  | To be sounded as and when required |
| <i>Channels</i>                                       |                                    |
| Entrance Approach                                     | 17.7                               |
| Entrance Channel (18.0m)                              | 18.0                               |
| Entrance Channel (17.4m)                              | 17.4                               |
| Entrance Channel (16.8m)                              | 16.8                               |
| Entrance Channel (16.2m)                              | 16.1                               |
| Entrance Channel to Horseshoe                         | 15.2                               |
| Horseshoe   | 15.2                               |
| Steelworks Channel to Swinging Basin                  | 15.0                               |
| Swinging Basin  | 15.0                               |
| * Swinging Basin to Mayfield 4                        | 12.8                               |
| * Hunter River South Arm (Kooragang 6 to Kooragang 8) | 14.5                               |
| Basin Cutting   | 12.8                               |
| Basin Area to Eastern & Western Basin Berths          | 12.3                               |
| Basin Area to 1 Throsby                               | 10.0                               |
| Stockton Crossing                                     | 3.6                                |

\* Indicates new or revised entry.

**Chart temporarily affected - Aus 207 - Aus 208 - AU5XX208****556(T)/2010 AUSTRALIA - NEW SOUTH WALES - Clarence River - Harwood - Harbour works completed***Former Notice - 1235(T)/2009 is cancelled*

NSW Maritime Notice NC939/2009 (AA434622)

Cancel this notice on receipt.

**Chart formerly affected - Aus 222 - Aus 812 - Aus 813**

**557(T)/2010 AUSTRALIA - QUEENSLAND - Point Danger to Point Lookout - Scientific instruments***Former Notice* - 123(T)/2010 is cancelled

Maritime Safety Queensland Notice 430(T)/2010 (AA470818)

Special light buoys, *Fl(5)Y.20s*, exist in positions (WGS84 datum):

28° 10'.82 S 153° 34'.58 E

27° 58'.01 S 153° 26'.52 E

27° 29'.53 S 153° 37'.76 E.

Mariners are not to use these buoys as moorings.

**Chart temporarily affected - Aus 230 - Aus 813 - Aus 814 - AU428153 - AU5XX230****558(T)/2010 AUSTRALIA - QUEENSLAND - Moreton Bay - Ship to ship transfer completed***Former Notice* - 373(T)/2010 is cancelled

Maritime Safety Queensland Notice 416(T)/2010 (AA471148)

Cancel this notice on receipt.

**Chart formerly affected - Aus 236 - AU428153****559(T)/2010 AUSTRALIA - QUEENSLAND - Moreton Bay - Russell Island - Wreck salvaged***Former Notice* - 169(T)/2010 is cancelled

Maritime Safety Queensland Notice 416(T)/2010 (AA471148)

Cancel this notice on receipt.

**Chart formerly affected - Aus 236****560(T)/2010 AUSTRALIA - QUEENSLAND - Brisbane River - Whyte Island - Harbour works***Date* - Until 31 January 2011

Maritime Safety Queensland Notice 429(T)/2010 (AA470851)

Works are in progress at the western side of the bridge (27° 24'.03 S 153° 09'.89 E).

Temporary construction platforms have been established extending from the shore on both sides of Boat Passage and all hazards to navigation will be marked by flashing yellow lights.

Mariners are advised to navigate with caution in the area.

**Chart temporarily affected - Aus 236 - Aus 237 - AU428153 - AU5237X8****561(T)/2010 AUSTRALIA - QUEENSLAND - Bundaberg - Burnett River - Inner Reach - Light beacon damaged**

Maritime Safety Queensland Notice 420(T)/2010 (AA470862)

No19 light beacon (24° 45'.60 S 152° 23'.05 E) has been damaged and is unlit.

**Chart temporarily affected - Aus 242 - AU5XX242****562(T)/2010 AUSTRALIA - QUEENSLAND - Shoalwater Bay - Live firing completed***Former Notice* - 509(T)/2010 is cancelled

Maritime Safety Queensland Notice 410(T)/2010 (AA469636)

Cancel this notice on receipt.

**Chart formerly affected - Aus 260 - Aus 261 - Aus 367 - Aus 822 - AX 0260E - AX 0367E - AX 0822E - AX 60260 - AX 67261 - AU423150 - AU5261P2**

**563(T)/2010 AUSTRALIA - QUEENSLAND - Shoalwater Bay - Live firing completed***Former Notice* - 508(T)/2010 is cancelled

Maritime Safety Queensland Notice 381(T)/2010 (AA468646)

Cancel this notice on receipt.

**Chart formerly affected - Aus 260 - Aus 367 - Aus 822 – AX 0260E – AX 0367E – AX 0822E – AX 60260 - AU423150****564(T)/2010 AUSTRALIA - QUEENSLAND - Dangerous Reef - Light buoy off station**

Maritime Safety Queensland Notice 441(T)/2010 (AA471653)

The east cardinal light buoy (21° 08'.05 S 149° 14'.94 E) is off station.

**Chart temporarily affected - Aus 249 - Aus 250 – AX 0249E - AU422149 - AU5250P1****565(T)/2010 AUSTRALIA - QUEENSLAND - Airlie Beach - Muddy Bay - Wreck***Former Notice* - 448(T)/2010 is cancelled

Maritime Safety Queensland Notice 421(T)/2010 (AA470869)

A stranded wreck marked by a special light buoy, *Fl. Y. 3s*, exists in position 20° 15'.96 S 148° 43'.38 E.

Mariners are advised to navigate with caution in the area.

**Chart temporarily affected - Aus 252 - Aus 253 - Aus 268 - AU421148 - AU5268P2****566(T)/2010 AUSTRALIA - CORAL SEA - Mellish Reef - Light buoy off station northwestwards***Former Notice* - 515(T)/2010 is cancelled

Australian Bureau of Meteorology (AA471495)

The light buoy, *Fl. Y. 3s* (15° 48'.0 S 158° 31'.0 E), is drifting and currently in position 15° 22'.11 S 152° 00'.40 E (19 May 2010).**Chart temporarily affected –Aus 4604 (INT 604) - AX 4604F - AU130150****567(T)/2010 AUSTRALIA - QUEENSLAND - Karumba - Dredging operations***Date* - Until 31 July 2010

Maritime Safety Queensland Notice 445(T)/2010 (AA471655)

Dredging operations are in progress at Karumba.

All vessels involved in the operations will display appropriate lights and shapes.

Mariners are advised to navigate with caution in the area.

**Chart temporarily affected - Aus 6****568(T)/2010 AUSTRALIA - NORTHERN TERRITORY - Darwin - Fort Point - Harbour works***Date* - Until 31 August 2010

Dampier Port Authority (AA470419)

Works associated with the demolition of the Iron Ore Wharf (12° 28'.35 S 130° 50'.58 E) are in progress.

Special light buoys exist in positions 12° 28'.35 S 130° 50'.50 E and 12° 28'.40 S 130° 50'.65 E which mark an exclusion zone.

**Chart temporarily affected - Aus 24 - Aus 26 - Aus 28 – AX 72026 - AU5XXX24**

**569(T)/2010 AUSTRALIA - TIMOR SEA - Osborn Passage - Platform; mooring buoys**

*Former Notice* - 455(T)/2010 is cancelled  
PTTEP Australasia (AA465730, AA471507)

The drill rig *West Atlas* and *Montara* exist in position 12° 40'.33 S 124° 32'.37 E; they are damaged and unlit.

Unlit mooring buoys exist in positions 12° 39'.66 S 124° 32'.44 E, 12° 40'.72 S 124° 32'.45 E and 12° 40'.11 S 124° 32'.45 E.

MT *Nor Captain* is expected to be onsite from May to June 2010 for well testing.

Construction vessel *Jascon 25* is expected onsite from June to October 2010 to remove the *West Atlas*.

Mariners are advised to navigate with caution in the area.

**Chart temporarily affected - Aus 314 - Aus 319 - Aus 4721 (INT 721) - Aus 4722 (INT 722) – AX 0314F – AX 0319F - AU313124**

**570(T)/2010 AUSTRALIA - WESTERN AUSTRALIA - Dampier - Shoaling**

Dampier Port Authority Notice 17/2010 (AA470905)

Shoaling exists at the Mermaid Supply Base between the berths and the slip in the area with a declared depth of 4m (20° 37'.94 S 116° 45'.22 E (WGS84 datum)).

Mariners are advised to navigate with caution in the area.

**Chart temporarily affected - Aus 59 - AU5XXX58**

**571(T)/2010 AUSTRALIA - WESTERN AUSTRALIA - Montebello Islands - Mooring unlit, mooring withdrawn northeastwards**

MV *Mermaid Achiever* (AA471498, AA471499), Woodside Energy Ltd (AA471473)

The lit mooring buoy (19° 35'.08 S 116° 03'.42 E (WGS84 datum)) is unlit.

The mooring buoy (19° 35'.87 S 115° 59'.68 E) has been temporarily withdrawn.

**Chart temporarily affected - Aus 327**

**572(T)/2010 AUSTRALIA - SOUTH AUSTRALIA - Spencer Gulf - Middle Bank - Obstruction removed**

*Former Notice* - 399(T)/2010 is cancelled  
Department for Transport, Energy and Infrastructure SA (AA471206)

Cancel this notice on receipt.

**Chart formerly affected - Aus 444 - Aus 778**

**573(T)/2010 AUSTRALIA - SOUTH AUSTRALIA - MacDonnell Sound - Wreck**

Department of Transport, Energy and Infrastructure SA Notice 23/2010 (AA470933)

A stranded wreck exists in position 35° 05'.83 S 137° 51'.90 E (WGS84 datum).

Mariners are advised to navigate with caution in the area.

**Chart temporarily affected - Aus 139 - Aus 780**

**574(P)/2010 AUSTRALIA - VICTORIA - Port Campbell - Lights established; bearing altered**

*Date* - On or about 11 May 2010

Victorian Notices 45/2010, 46(T)/2010 (AA471058, AA471060)

Leading lights, *Q.Bu (Front) and Iso.Bu.4s (Rear)*, bearing  $050^\circ$  have been established in approximate position  $38^\circ 37' \cdot 17$  S  $142^\circ 59' \cdot 56$  E.

The bearing of the leads ( $38^\circ 37' \cdot 19$  S  $142^\circ 59' \cdot 38$  E) has been amended to  $028^\circ$ .

*Note*: Charting action will be undertaken on receipt of surveyed positions.

**Chart which will be affected - Aus 141****575(T)/2010 AUSTRALIA - TASMANIA - Currie Harbour - Lights unlit**

*Date* - Until 28 May 2010

Marine and Safety Tasmania Notice M58/2010 (AA471603)

All lights in Currie Harbour are unlit.

Mariners are advised not to navigate the harbour between sunset and sunrise.

**Chart temporarily affected - Aus 178 - AU5178P7****576(T)/2010 AUSTRALIA - VICTORIA - Port Phillip - Altona - Harbour works**

*Date* - Until 13 September 2010

Victorian Notice 42(T)/2010 (AA469622)

Works associated with the construction of two rock groynes in positions  $37^\circ 52' \cdot 31$  S  $144^\circ 49' \cdot 54$  E and  $37^\circ 52' \cdot 34$  S  $144^\circ 50' \cdot 11$  E and beach renourishment are in progress.

All hazards to navigation will display appropriate lights and shapes

Mariners are advised to navigate with caution in the area.

**Chart temporarily affected - Aus 143 - Aus 155 - AU438144****577(T)/2010 AUSTRALIA - VICTORIA - Edithvale - Light buoy re-established**

*Former Notice* - 530(T)/2010 is cancelled

Victorian Notice 49(T)/2010 (AA471077)

Cancel this notice on receipt.

**Chart formerly affected - Aus 143 - Aus 155 - AU439145**

## HYDROGRAPHIC REPORTS

| <i>Locality</i>                    | <i>Report</i>           | <i>Ship/Authority</i>                              | <i>Observer</i> |
|------------------------------------|-------------------------|--|-----------------|
| WA-<br>Dampier<br>North West Shelf | Depths<br>Mooring buoys | HMAS <i>Melville</i><br>MV <i>Mermaid Acheiver</i> |                 |

**NAVIGATION WARNINGS**

The following radio messages have been received during the period to 21 May 2010. Signal copies of these messages may be destroyed. It is recommended that the reprint of Navigational Warnings should be kept in a file or a book divided into areas. Cancellation should be made on receipt of signals and reprints.

Rigs on location other than those listed in the latest Section III summary are the subject of Radio Navigational Warnings. Rigs in transit will not be the subject of Warnings.

**AUSCOAST WARNING**

- 108 Cancelled.  
 109 Special purpose vessel *Limitless* conducting seismic survey in area bounded by 32° 55'.6 S to 33° 09'.6 S and 151° 54'.1 E to 152° 22'.7 E. 2.5M clearance requested.  
 110 Drill rig *Jack Bates* in position 20° 06'.53 S 113° 43'.49 E. 2.5M clearance requested.  
 111 Special purpose vessel *Southern Supporter* conducting seismic survey in area bounded by 19° 42'.0 S to 21° 05'.0 S and 113° 09'.0 E to 115° 10'.0 E. 2.5M clearance requested.  
 112 Cancelled.  
 113 Cancelled.  
 114 Drill rig *Atwood Eagle* in position 19° 49'.08 S 112° 22'.15 E. 2.5M clearance requested.  
 115 Cancelled.  
 116 Drill rig *Ensco 7500* in position 19° 33'.0 S 114° 07'.8 E. 2.5M clearance requested.  
 117 Cancelled.  
 118 Varzin Passage C2 light buoy (10° 32'.11 S 141° 52'.03 E) unlit.  
 119 Drill rig *Ocean Epoch* in position 21° 30'.1 S 114° 08'.7 E. 2.5M clearance requested.  
 120 Special purpose vessel *Geo Natuna* conducting seismic survey towing 4500m cables in area bounded by 21° 17'.0 S to 21° 43'.0 S and 113° 48'.0 E to 114° 04'.5 E. 4M clearance requested.  
 121 Drill rig *Ocean Shield* in position 21° 19'.25 S 115° 07'.75 E. 2.5M clearance requested.

**NAVAREA X WARNINGS**

Nil.

**Navigational warnings in force as at 210001UTC MAY 10.****Auscoast**

070 077 080 092 093 097 100 105 109 110 111 114 116 118 119 120 121

**Navarea X**

Nil.

**Summary of mobile drilling rigs as at 210001UTC MAY 10.**

| <i>Name</i>       | <i>Position</i>            |
|-------------------|----------------------------|
| Songa Venus       | 13° 40'.53 S 123° 21'.31 E |
| Transocean Legend | 13° 41'.53 S 122° 11'.29 E |
| Ocean Shield      | 21° 19'.25 S 115° 07'.75 E |
| Maersk Discoverer | 19° 01'.34 S 114° 33'.25 E |
| Ensco 7500        | 19° 33'.00 S 114° 07'.80 E |
| Ocean Epoch       | 21° 30'.10 S 114° 08'.70 E |
| Nan Hai 6         | 21° 28'.90 S 113° 59'.30 E |
| Jack Bates        | 20° 06'.53 S 113° 43'.49 E |
| Atwood Eagle      | 19° 49'.08 S 112° 22'.15 E |
| Ocean Patriot     | 38° 10'.86 S 148° 35'.58 E |

**NAVAREA XIV WARNINGS**

- 016 Cancelled.  
 017 Cancelled.

**Navarea XIV warnings in force as at 210001UTC MAY 10.**

2009 059

2010 007 014

|            |                                   |
|------------|-----------------------------------|
| Telephone: | +61 8 9216 8999                   |
| email:     | marine.safety@transport.wa.gov.au |
| Website:   | www.transport.wa.gov.au/imarine   |

AHP20 - Page 32

|          |                                   |
|----------|-----------------------------------|
| Website: | www.environment.gov.au/coasts/mpa |
|----------|-----------------------------------|

AHP20 - Page 78

|          |                              |
|----------|------------------------------|
| Website: | www.environment.gov.au/parks |
|----------|------------------------------|

AHP20 - Page 79

|  |                               |
|--|-------------------------------|
| <b>QUEENSLAND</b>  |                               |
| <b>Business Information Centre for Queensland Primary Industries and Fisheries</b> |                               |
| Phone:   | 13 25 23<br>+61 7 3404 6999   |
| email:   | callweb@dpi.qld.gov.au        |
| Website:   | www.dpi.qld.gov.au            |
| <b>Department of Environment and Resource Management</b>                           |                               |
| Phone:   | 1300 130 372 (Australia only) |
| email:   | info@derm.qld.gov.au          |
| Website:   | www.derm.qld.gov.au           |

AHP20 - Page 91

|                            |                    |
|----------------------------|--------------------|
| AMSA's website:            | www.amsa.gov.au    |
| Seacare Authority website: | www.seacare.gov.au |

AHP20 - Page 199

|   |   |
|---|---|
| Air Services Australia website:                   | www.airservicesaustralia.com                |
| Maritime Safety Queensland website:               | www.msq.qld.gov.au/Notices-to-Mariners.aspx |
| <b>Shoalwater Bay Training Area Range Control</b> |   |
| Telephone:  | +61 7 4935 5000                             |
| Facsimile:  | +61 7 4935 5024                             |
| email:  | shoalwater.bay@defence.gov.au               |

AHP20 - Page 215

|  |                             |
|--|-----------------------------|
| <b>Brisbane</b>                          |                             |
| Telephone:                               | +61 7 3860 3500             |
| Fax:                                     | +61 7 3860 3571             |
| email:                                   | RHMBrisbane@msq.qld.gov.au  |
| <b>Gladstone / Bundaberg / Port Alma</b> |                             |
| Telephone:                               | +61 7 4973 1200             |
| Fax:                                     | +61 7 4972 5520             |
| email:                                   | RHMGladstone@msq.qld.gov.au |

AHP20 - Page 225

|   |                              |
|---|------------------------------|
| <b>Mackay / Hay Point</b>                 |                              |
| Telephone:                                | +61 7 4944 3700              |
| Fax:                                      | +61 7 4944 3790              |
| email:                                    | mackaymarine@msq.qld.gov.au  |
| <b>Townsville / Abbot Point / Lucinda</b> |                              |
| Telephone:                                | +61 7 4726 3400              |
| Fax:                                      | +61 7 4721 2028              |
| email:                                    | RHMTownsville@msq.qld.gov.au |
| <b>Cairns / Weipa</b>                     |                              |
| Telephone:                                | +61 7 4052 7400              |
| Fax:                                      | +61 7 4035 1127              |
| email:                                    | RHMCairns@msq.qld.gov.au     |
| <b>Gold Coast</b>                         |                              |
| Telephone:                                | +61 7 5539 7300              |
| Fax:                                      | +61 7 5539 7388              |
| Email:                                    | msqmail@msq.qld.gov.au       |

AHP20 - Page 225

|                            |                                 |
|----------------------------|---------------------------------|
| Website:                   | www.regionalchannels.vic.gov.au |
| Harbour Control Telephone: | +61 3 5247 0300                 |

AHP20 - Page 228

|                    |        |         |         |   |   |                        |   |
|--------------------|--------|---------|---------|---|---|------------------------|---|
| Eden (Twofold Bay) | 37°04' | 149°54' | AUS 192 | Y | Y | NSW Maritime Authority | www.eden.nsw.gov.au<br>edenpilot@maritime.nsw.gov.au<br>+61 2 6496 1717 |
|                    |        |         |         | Y |   |                        |   |

AHP20 - Page 227

|         |        |         |         |   |   |                      |  |
|---------|--------|---------|---------|---|---|----------------------|--|
| Geelong | 38°06' | 144°22' | AUS 157 | Y | Y | Geelong Port Pty Ltd | www.geelongport.com.au<br>m.controller@patrick.com.au<br>+61 3 5247 0300 |
|         |        |         |         | Y |   |                      |  |

AHP20 - Page 229

|  |        |         |         |                |   |                 |   |
|--|--------|---------|---------|----------------|---|-----------------|---|
| Port Welshpool<br>(Corner Inlet & Port Albert) | 38°42' | 146°28' | AUS 182 | Y <sup>1</sup> | N | Gippsland Ports | www.gippslandports.vic.gov.au<br>ceo@gippslandports.vic.gov.au<br>+61 3 5688 1303 |
|  |        |         |         | N              |   |                 |   |

AHP20 - Page 229

|                                 |        |         |         |   |   |  |   |
|---------------------------------|--------|---------|---------|---|---|--|---|
| King Island<br>(Grassy Harbour) | 40°04' | 144°03' | AUS 178 | N | Y | Tasmanian Ports Corporation (King Island Ports Corp) | www.tasports.com.au<br>reception@kiport.com.au<br>+61 3 6461 1155 |
|                                 |        |         |         | N |   |  |   |

AHP20 - Page 230

|           |        |         |         |                |   |             |  |
|-----------|--------|---------|---------|----------------|---|-------------|--|
| Ardrossan | 34°26' | 137°55' | AUS 139 | Y <sup>1</sup> | Y | Viterra Ltd | www.viterra.com.au<br>viterra.aus@viterra.com<br>+61 8 8211 7199<br>1800 018 205 |
|           |        |         |         | Y              |   |             |  |

AHP20 - Page 231

|             |        |         |         |                |   |                      |   |
|-------------|--------|---------|---------|----------------|---|----------------------|---|
| Cape Cuvier | 24°13' | 113°24' | AUS 330 | Y <sup>3</sup> | Y | Dampier Salt Pty Ltd | www.dampiersalt.com.au<br>+61 8 9942 6003 |
|             |        |         |         | N              |   |                      |   |

AHP20 - Page 232

|               |        |         |        |   |   |                       |   |
|---------------|--------|---------|--------|---|---|-----------------------|---|
| Koolan Island | 16°07' | 123°44' | Aus 41 | N | Y | Mount Gibson Iron Ltd | www.mtgibsoniron.com.au<br>admin@mtgibsoniron.com.au<br>+61 8 9423 0862 |
|               |        |         |        | N |   |                       |   |

AHP20 - Page 233

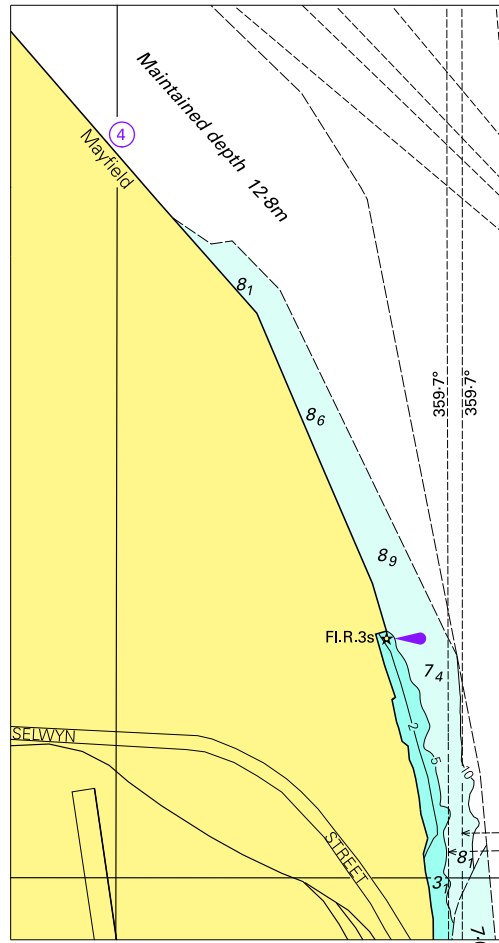
|                  |        |         |        |   |   |                                  |   |
|------------------|--------|---------|--------|---|---|----------------------------------|---|
| Thevenard Island | 21°27' | 115°00' | AUS 64 | N | Y | Chevron Texaco Australia Pty Ltd | www.chevron.com<br>ask@chevron.com<br>+61 8 9216 4000 |
|                  |        |         |        | N |   |                                  |   |

AHP20 - Page 233

|         |        |         |        |                |   |                        |   |
|---------|--------|---------|--------|----------------|---|------------------------|---|
| Wyndham | 15°27' | 128°06' | AUS 32 | Y <sup>3</sup> | Y | Cambridge Gulf Limited | hmordport@westnet.com.au<br>+61 8 9161 1203 |
|         |        |         |        | Y              |   |                        |   |

AHP20 - Page 233

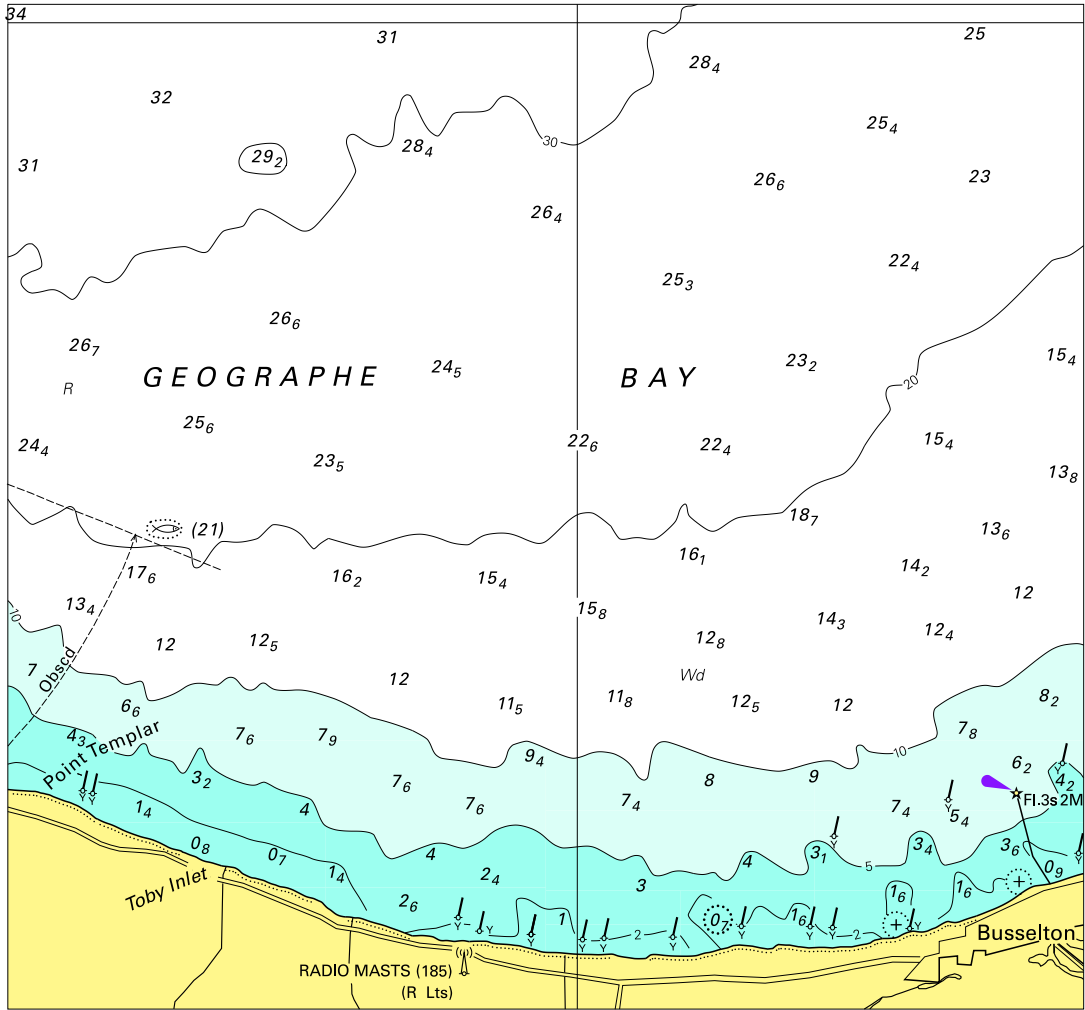
To accompany Australian Notice to Mariners 536/2010



© Commonwealth of Australia 2010  
Block for chart Aus 208 (65.1 x 123.6mm)



To accompany Australian Notice to Mariners 548/2010

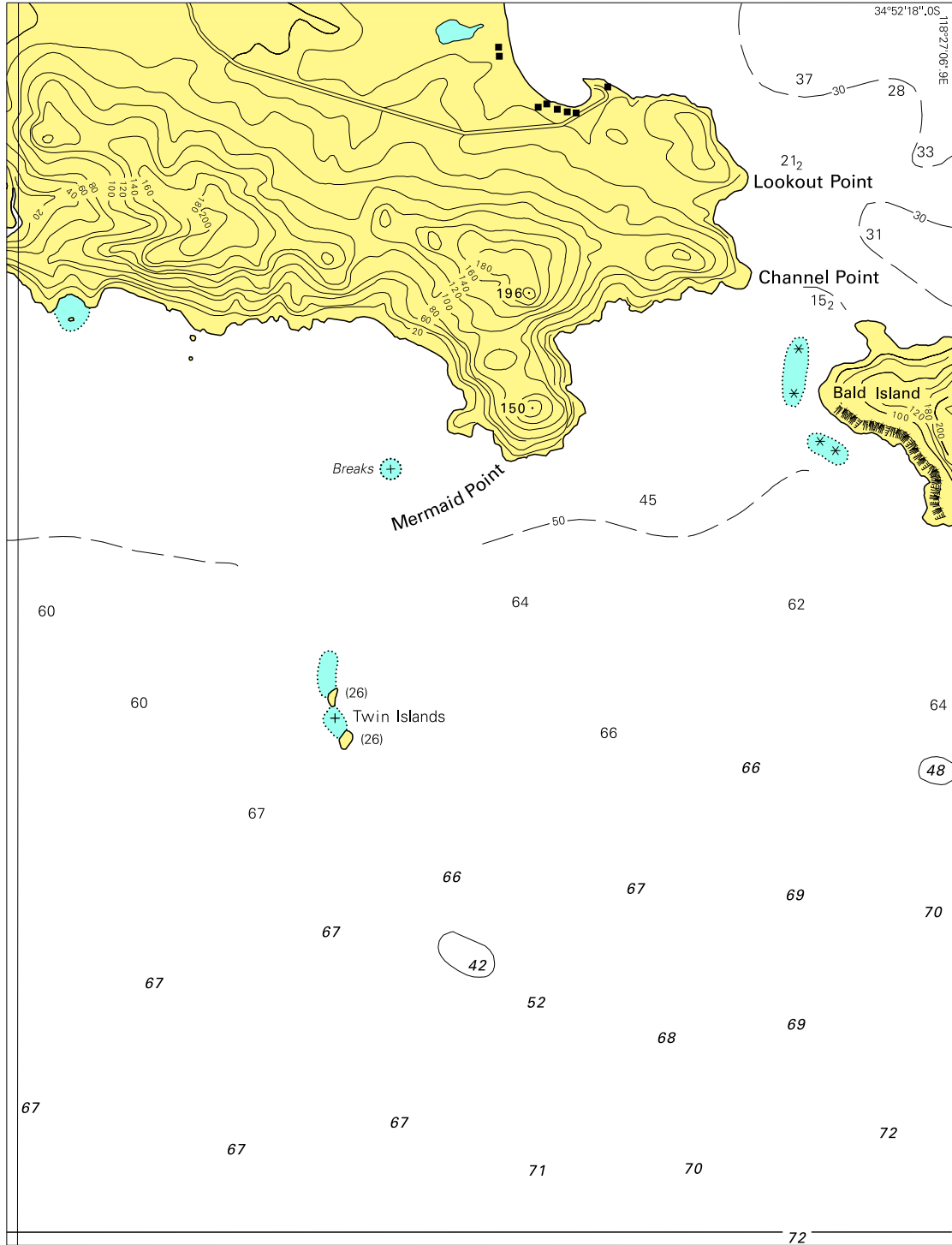


Block for chart Aus 756

© Commonwealth of Australia 2010

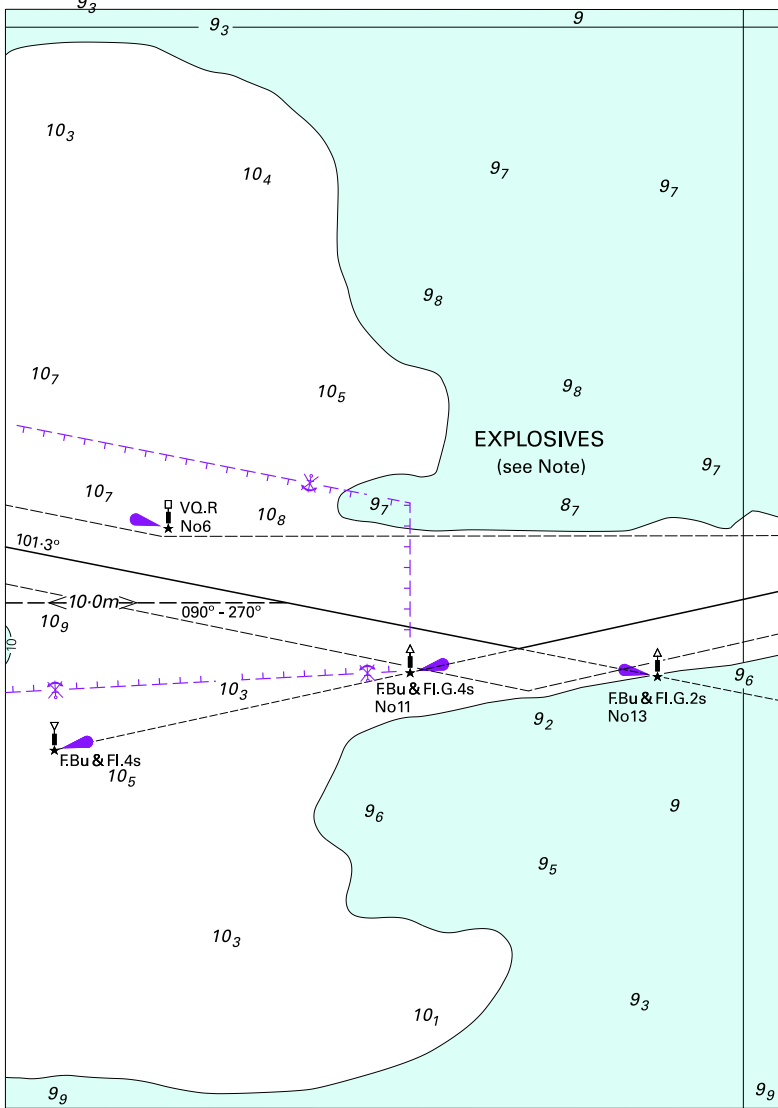
(142.3 x 132.9mm)

To accompany Australia Notice to Mariners 549/2010





To accompany Australian Notice to Mariners 550/2010



Block for chart Aus 137 © Commonwealth of Australia 2010

(102.9 x 145.5mm)

