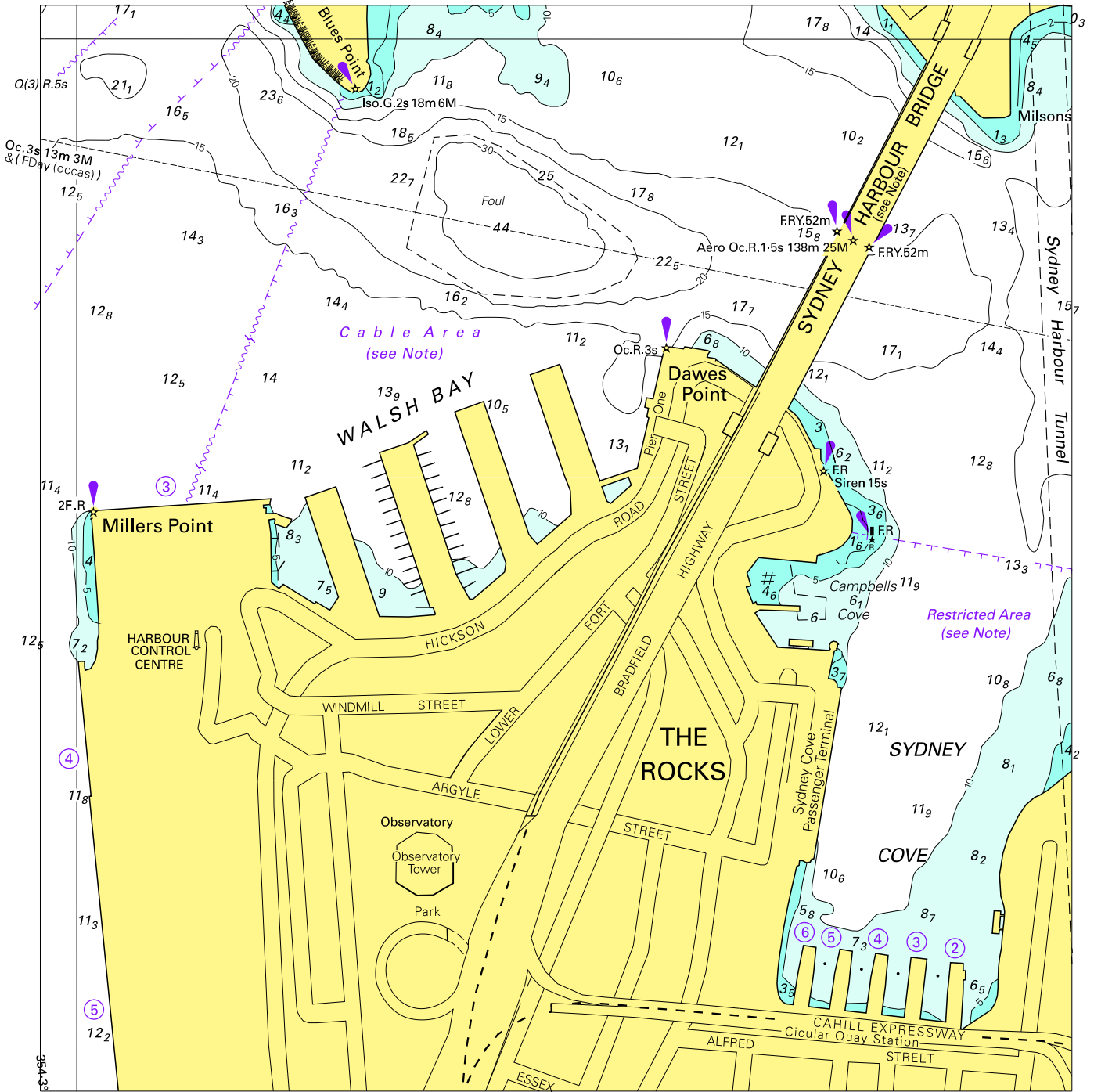
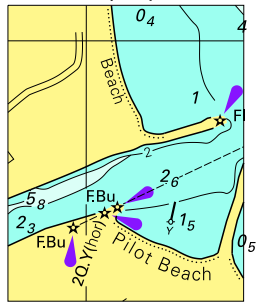


To accompany Australian Notice to Mariners 472/2010

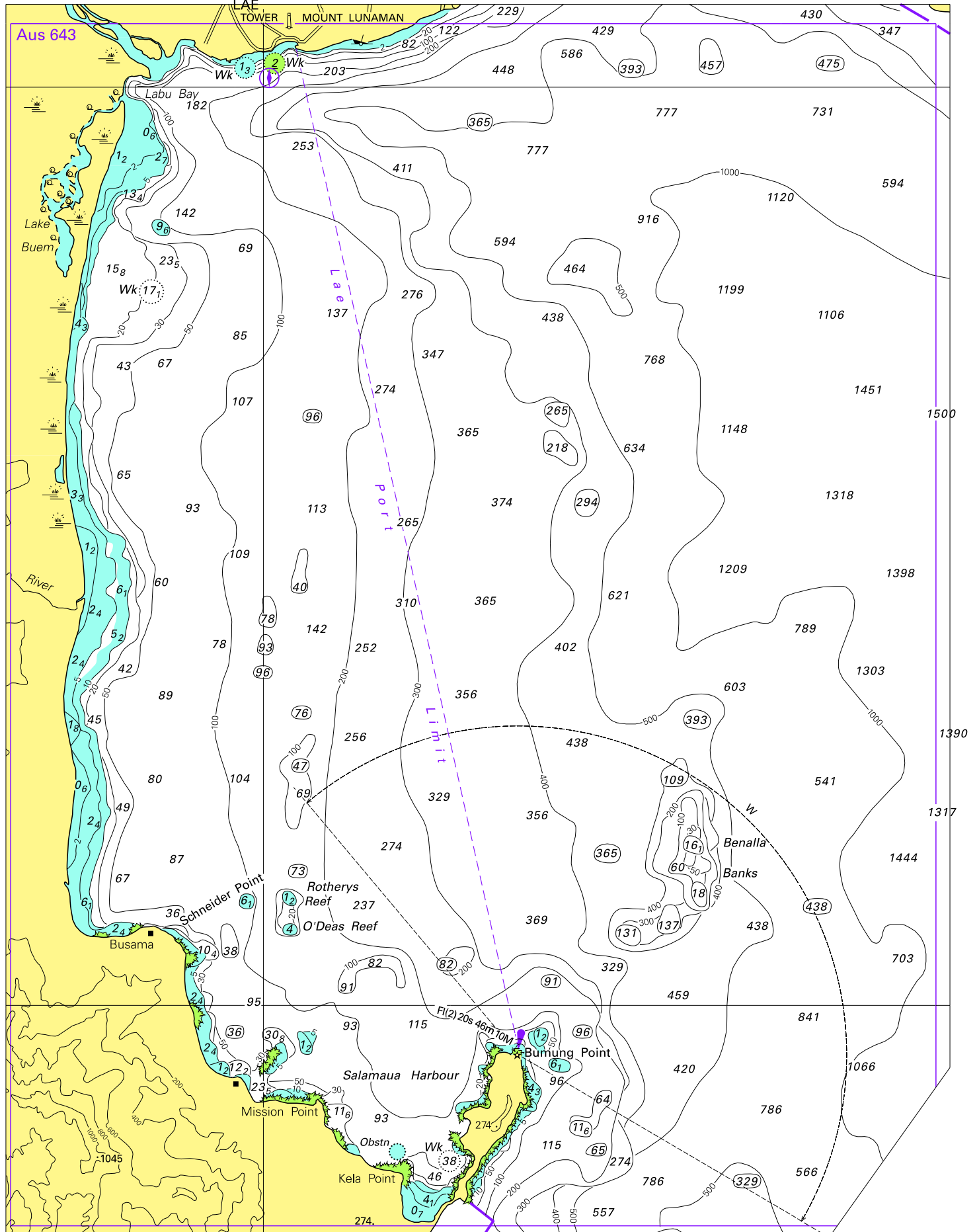


To accompany Australian Notice to Mariners 473/2010



© Commonwealth of Australia 2010
Block for chart Aus 219
(31.2 x 39.1mm)

To accompany Australian Notice to Mariners 477/2010

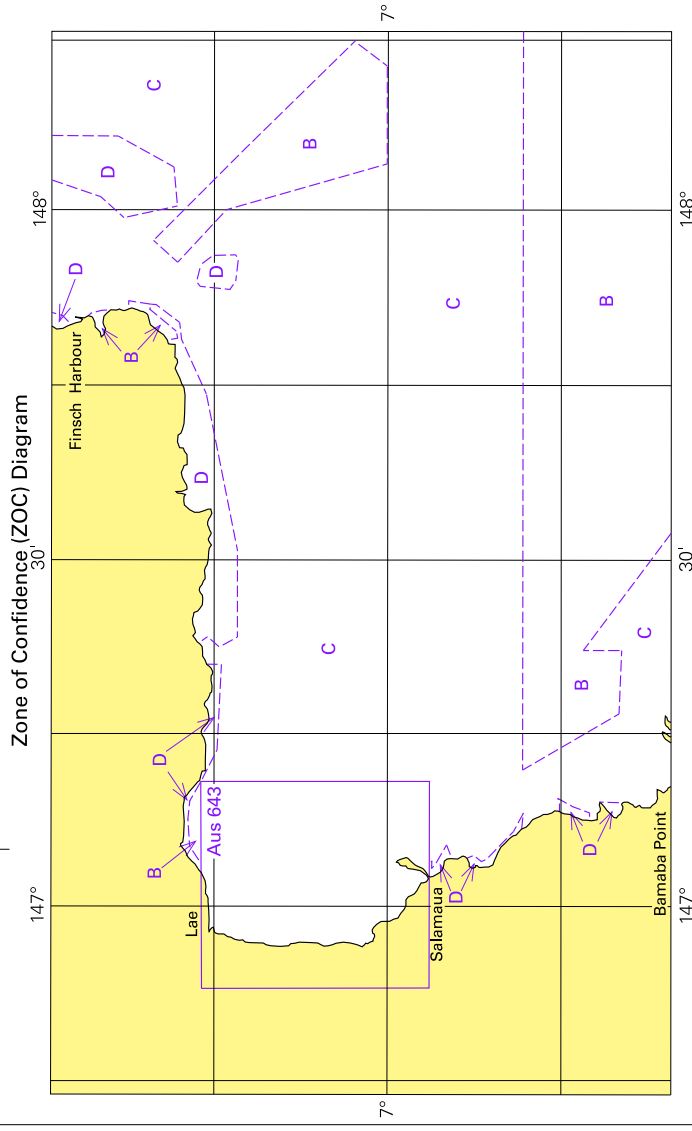


Block for chart Aus 523

© Commonwealth of Australia 2010

(188-9 x 245-9mm)

To accompany Australian Notice to Mariners 477/2010



ZOC CATEGORIES
(For details see Australian Seafarers Handbook, AHP 20)

ZOC	POSITION ACCURACY	DEPTH ACCURACY	SEAFLOOR COVERAGE
A1	±5m	±0.50m + 1% d	All significant seafloor features detected
A2	±20m	±1.00m + 2% d	All significant seafloor features detected
B	±50m	±1.00m + 2% d	Uncharted features hazardous to surface navigation are not expected but may exist
C	±500m	±2.00m + 5% d	Depth anomalies may be expected
D	Worse than ZOC C	Worse than ZOC C	Large depth anomalies may be expected
U	Unassessed - The quality of the bathymetric data has yet to be assessed		

Block for chart Aus 523

© Commonwealth of Australia 2010

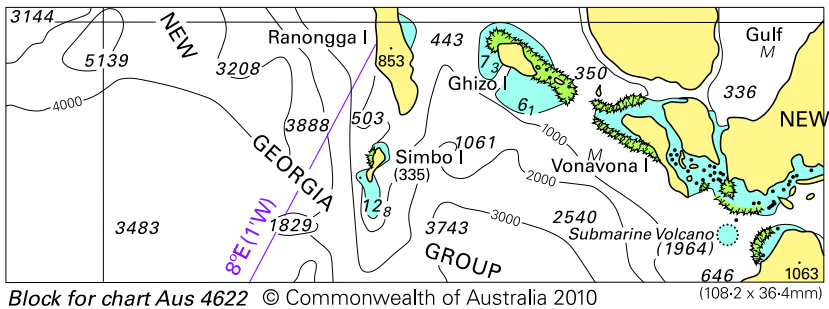
(248.1 x 114.1mm)

To accompany Australian Notice to Mariners 490/2010



© Commonwealth of Australia 2010
Block for chart Aus 130 (67.9 x 64.0mm)

To accompany Australian Notice to Mariners 498/2010



Block for chart Aus 4622 © Commonwealth of Australia 2010

(108.2 x 36.4mm)